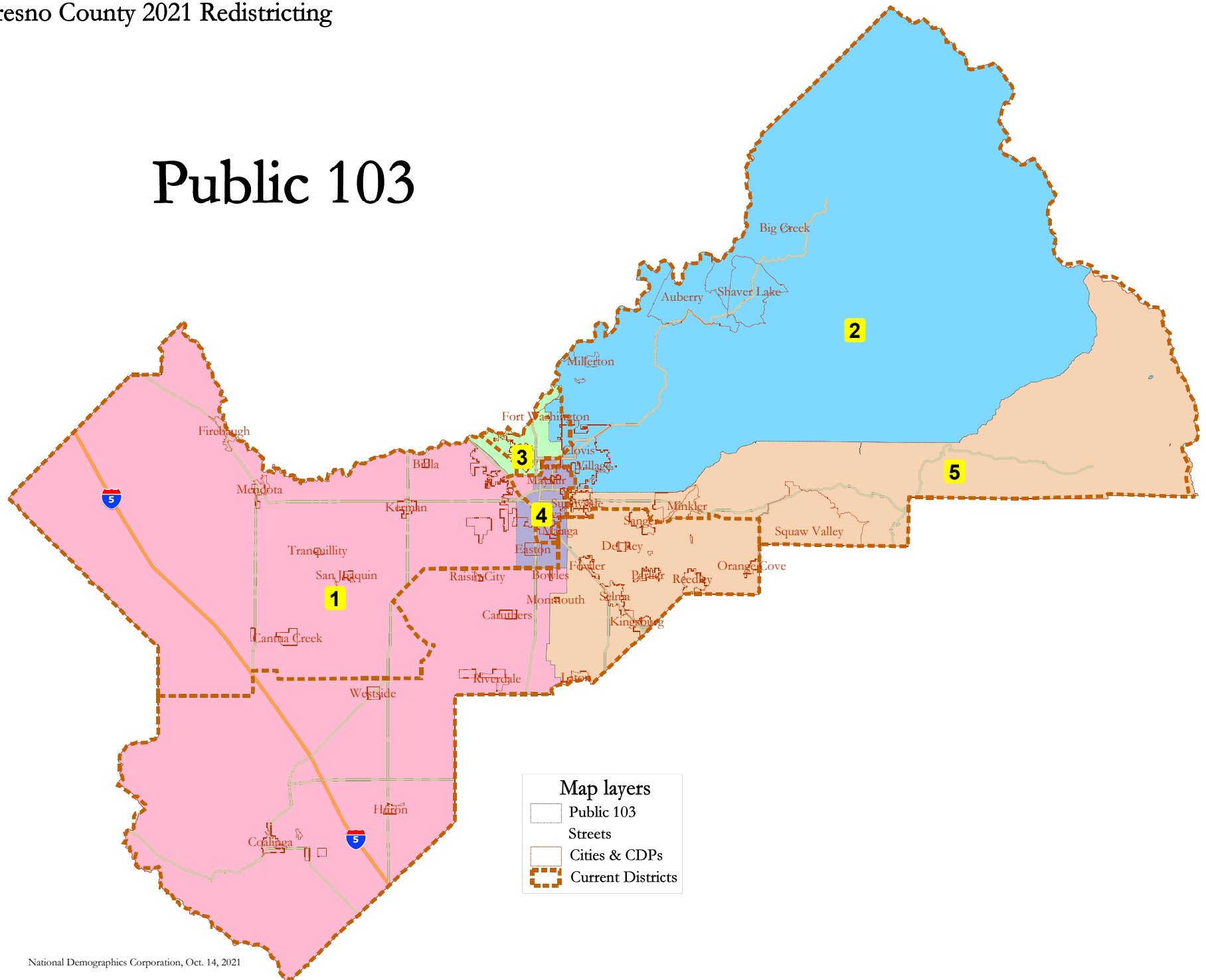
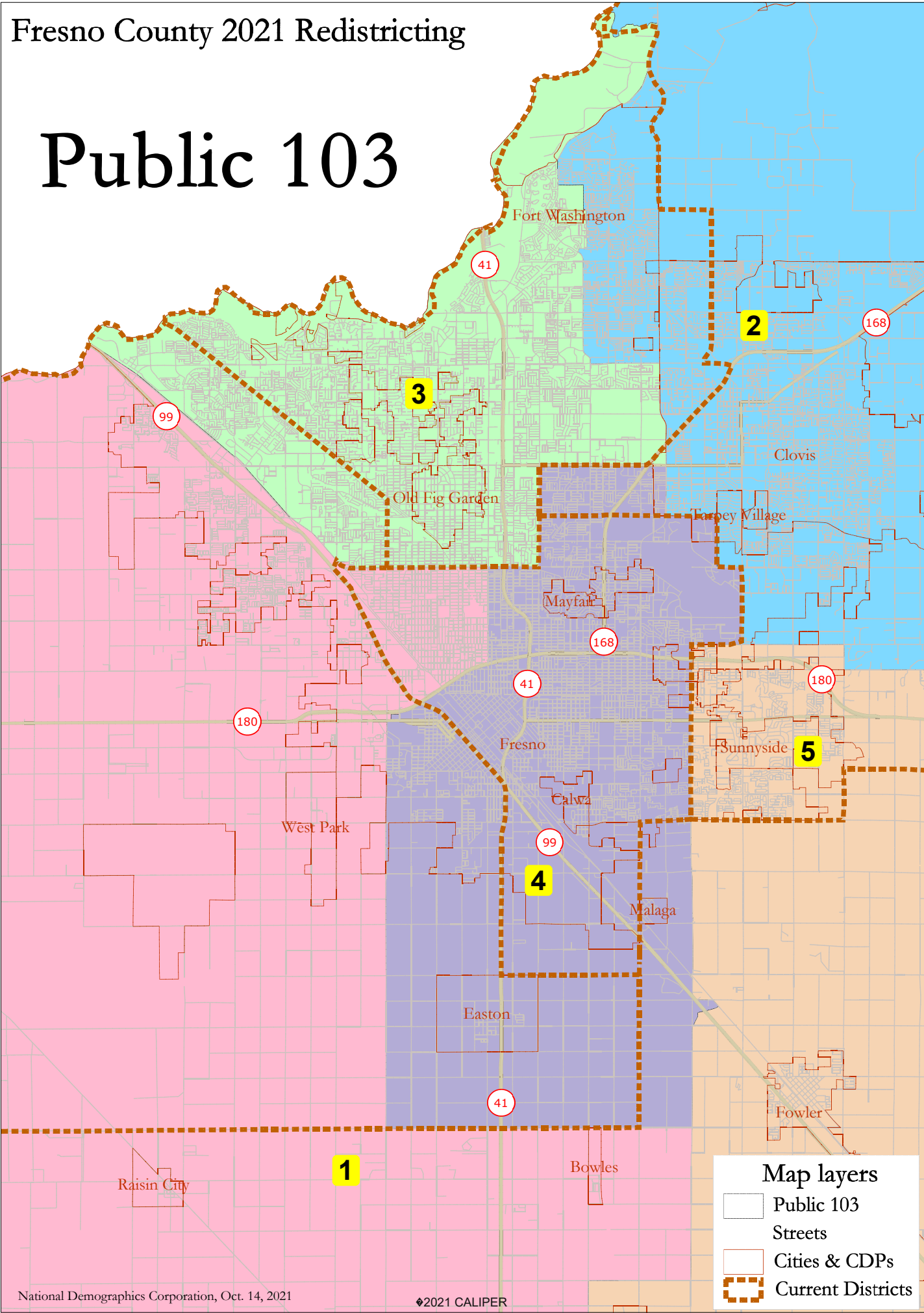


Public 103



Public 103



Map layers

- Public 103
- Streets
- Cities & CDPs
- Current Districts

Fresno County Public 103

District		1	2	3	4	5	Total
	Total Pop	194,792	207,057	198,581	209,030	199,070	1,008,530
	Deviation from ideal	-6,914	5,351	-3,125	7,324	-2,636	14,238
	% Deviation	-3.43%	2.65%	-1.55%	3.63%	-1.31%	7.06%
Total Pop	% Hisp	67.2%	27%	41%	66%	68%	54%
	% NH White	17%	50%	38%	11%	18%	27%
	% NH Black	4%	3%	7%	8%	2%	5%
	% Asian-American	9%	16%	10%	12%	10%	12%
Citizen Voting Age Pop	Total	99,562	131,892	139,719	108,270	105,603	585,047
	% Hisp	54%	23%	32%	55%	57%	42%
	% NH White	31%	61%	51%	20%	29%	40%
	% NH Black	6%	3%	8%	10%	2%	6%
	% Asian/Pac.Isl.	8%	12%	9%	13%	11%	11%
Voter Registration (Nov 2020)	Total	83,202	129,282	114,963	83,998	92,535	503,980
	% Latino est.	54%	22%	31%	55%	56%	41%
	% Spanish-Surnamed	50%	20%	29%	51%	52%	38%
	% Asian-Surnamed	5%	6%	4%	3%	5%	5%
	% Filipino-Surnamed	1%	1%	1%	1%	1%	1%
	% NH White est.	35%	69%	57%	27%	36%	48%
	% NH Black	6%	3%	7%	15%	2%	6%
Voter Turnout (Nov 2020)	Total	56,784	106,133	88,191	48,344	66,759	366,211
	% Latino est.	50%	20%	28%	54%	53%	37%
	% Spanish-Surnamed	47%	19%	26%	50%	49%	35%
	% Asian-Surnamed	6%	6%	4%	3%	5%	5%
	% Filipino-Surnamed	1%	1%	1%	1%	1%	1%
	% NH White est.	37%	71%	60%	29%	39%	52%
	% NH Black	6%	2%	6%	14%	2%	5%
Voter Turnout (Nov 2018)	Total	36,726	72,508	63,503	30,116	44,776	247,629
	% Latino est.	45%	17%	24%	50%	48%	33%
	% Spanish-Surnamed	43%	16%	22%	48%	45%	31%
	% Asian-Surnamed	5%	4%	4%	3%	4%	4%
	% Filipino-Surnamed	1%	1%	1%	1%	1%	1%
	% NH White est.	42%	74%	65%	31%	44%	56%
	% NH Black est.	5%	2%	6%	14%	2%	5%
ACS Pop. Est.	Total	193,457	191,470	200,514	199,960	195,869	981,270
Age	age0-19	33%	29%	27%	34%	34%	31%
	age20-60	53%	51%	52%	52%	50%	52%
	age60plus	14%	20%	21%	14%	16%	17%
Immigration	immigrants	28%	13%	14%	25%	25%	21%
	naturalized	29%	64%	54%	37%	37%	41%
Language spoken at home	english	43%	77%	71%	41%	44%	55%
	spanish	48%	11%	19%	47%	48%	35%
	asian-lang	3%	7%	5%	10%	4%	6%
	other lang	5%	5%	5%	2%	3%	4%
Language Fluency	Speaks Eng. "Less than Very Well"	28%	7%	10%	25%	23%	19%
Education (among those age 25+)	hs-grad	45%	45%	47%	47%	47%	46%
	bachelor	9%	23%	20%	7%	11%	14%
	graduatedegree	3%	13%	11%	2%	5%	7%
Child in Household	child-under18	46%	38%	32%	44%	47%	40%
Pct of Pop. Age 16+	employed	62%	64%	63%	56%	61%	61%
Household Income	income 0-25k	26%	12%	20%	40%	24%	24%
	income 25-50k	26%	17%	22%	26%	25%	23%
	income 50-75k	19%	16%	19%	16%	16%	17%
	income 75-200k	26%	46%	33%	17%	31%	31%
	income 200k-plus	3%	10%	6%	1%	3%	5%
Housing Stats	single family	79%	84%	67%	60%	82%	74%
	multi-family	21%	16%	33%	40%	18%	26%
	rented	50%	31%	48%	66%	40%	47%
	owned	50%	69%	52%	34%	60%	53%

Total population data from the 2020 Decennial Census.

Surname-based Voter Registration and Turnout data from the California Statewide Database.

Latino voter registration and turnout data are Spanish-surname counts adjusted using Census Population Department undercount estimates. NH White and NH Black registration and turnout counts estimated by NDC. Citizen Voting Age Pop., Age, Immigration, and other demographics from the 2015-2019 American Community Survey and Special Tabulation 5-year data.