

From: [Alex Tavlian](#)
To: [Fresno County 2021 Redistricting](#)
Subject: Letter and Map Submission for Fair Representation Coalition of Fresno County
Date: Wednesday, October 20, 2021 3:23:50 PM
Attachments: [FRC Letter \(1\).pdf](#)

CAUTION!!! - EXTERNAL EMAIL - THINK BEFORE YOU CLICK

Good afternoon,

Attached is a letter from the Fair Representation Coalition of Fresno County regarding our map submission for review of the Fresno County Redistricting Commission.

Thank you,

Alex E. Tavlian, Esq.
Chief Counsel, Fair Representation Coalition of Fresno County
(559) 349-6600



FAIR REPRESENTATION COALITION

FRESNO COUNTY

2037 W. Bullard Ave. #215 · Fresno, CA 93711

Oct. 20, 2021

Chairman Ken Abrahamian

Fresno County Redistricting Commission
2220 Tulare Street
Fresno, CA 93721

Chairman Abrahamian and Commissioners –

The Fair Representation Coalition of Fresno County is proud to present its draft map for consideration, enclosed with this letter.

FRC Fresno County submitted a draft map on Oct. 7, which is denoted as Public Map 101 on the Commission's website. Technical issues with Maptitude eliminated key design elements from the map ultimately sent to NDC and this Commission.

Enclosed in this letter is FRC Fresno County's finalized draft map and demographic data from Maptitude.

The FRC Finalized Map is compliant with the Voting Rights Act and preserves historic representation in accordance with Fresno County's population

The FRC Finalized Map contains contiguous boundaries that preserve historic representation of similarly-situated communities of interest. It does not favor or discriminate against members of any given political party, nor

The map is compliant with the federal Voting Rights Act of 1965 through the preservation of three minority-majority supervisorial districts within the jurisdiction each with strong and effective voting power of their minority communities.

The FRC Finalized Map adjusts boundaries to accommodate the trajectory of Fresno County's population growth and shift

The 2020 Census exposed a continued east-ward shift in Fresno County's population, pointing to sizable growth within the City of Clovis and the southeastern portion of the City of Fresno.

Redrawing boundaries following a decennial census is not about reflecting a snapshot in time, but rather acknowledging changes between decades and accounting for future changes ahead.

Based upon the body of evidence, from building permits to proposed development within Fresno County, the last decade's trend of growth is only expected to increase with further development within the Southeast Growth Area (known as SEGA or SEDA) and the City of Clovis.

This map addresses the growth by bringing established communities on the border of districts into a single district while ensuring that the current District 5 (Magsig) continues to have sufficient space to accommodate future growth.

The FRC Finalized Map unites divided communities of interest from the 2011 Final Map

By seeking to reorient Fresno County's Supervisorial map to account for changes in population, FRC Fresno County successfully unites three divided communities of interest in Fresno County.

First, the map brings the El Paseo-San Joaquin River neighborhood of the City of Fresno (north of Herndon, west of Highway 99) into District 2 (Brandau), uniting neighborhoods of northwest Fresno.

Second, the map brings neighborhoods south of California State University, Fresno into District 3 (Quintero), which feature closer demographic and socio-economic similarities with neighbors to the south than to its previous easterly neighbors in District 5 (Magsig). This increases voting strength for the population of these neighborhoods.

Third, the map brings neighborhoods of Sunnyside in the City of Fresno south of the San Joaquin Rail-line into District 4 (Mendes) from District 5 (Magsig). These neighborhoods are transitional between Fresno County's rural and suburban communities and, based on demographics and socio-economics, are similarly situated to nearby neighbors in District 4.

And lastly, the map brings Buchanan High School and neighboring communities in the City of Clovis, along with future planned residential developments north of Shepherd Ave. along Willow Ave into District 5 (Magsig) from District 2 unifying neighborhoods of Clovis and allowing for imminent population growth.

Concerns about extrajudicial comments and consideration of updated draft maps

It has been brought to our attention that Commissioners have made extrajudicial comments that the Commission would not consider draft maps submitted after the Oct. 11 submission deadline.

We hope that the Commission will consider this finalized map from FRC Fresno County along with any and all updated or finalized maps from those who made submissions prior to the Oct. 11 deadline.

FRC Fresno County was made aware this week that finalized 2020 Census data was not properly incorporated into Caliper Maptitude's map-making software until after the Oct. 11 submission deadline, thereby rendering draft maps submitted at the deadline incomplete, subject to heightened population deviation, and therefore prejudicial for consideration.

We respectfully ask that this draft map, rather than Public Map 101, be considered as FRC Fresno County's submission due to the technical issues with Maptitude and the missing 2020 Census Data.

Refusal to consider this finalized map may warrant the exploration of legal options, including litigation, by FRC Fresno County.

Thank you for your consideration and commitment to fair representation in our community.

Sincerely,

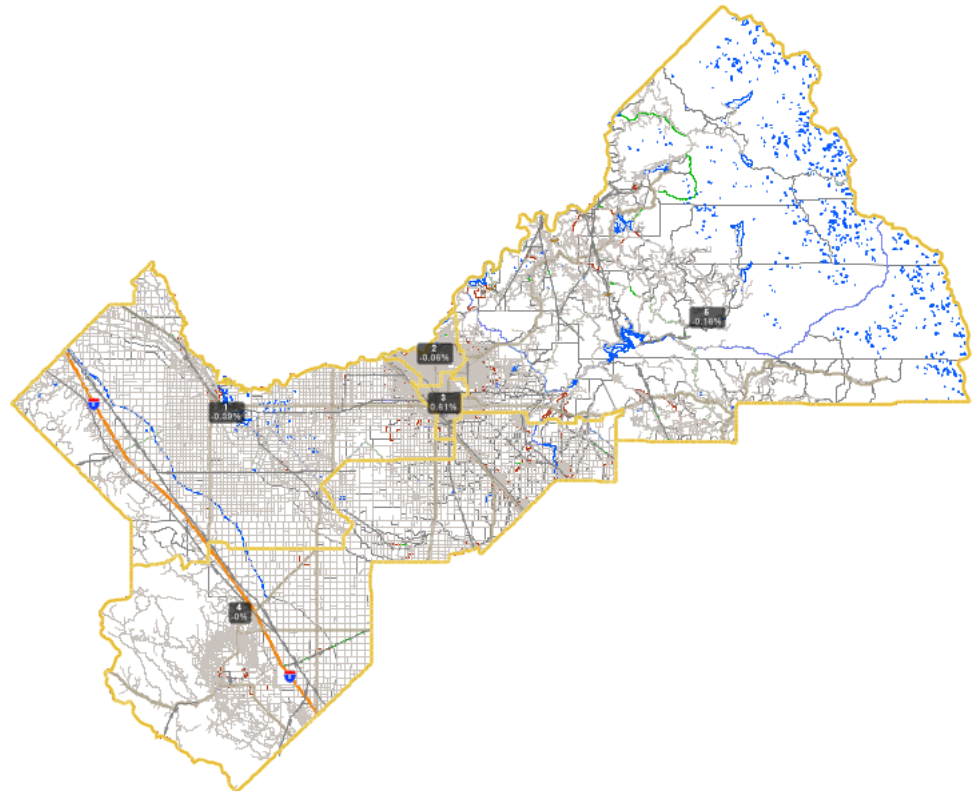


Alex E. Tavlian, Esq.

Chief Counsel

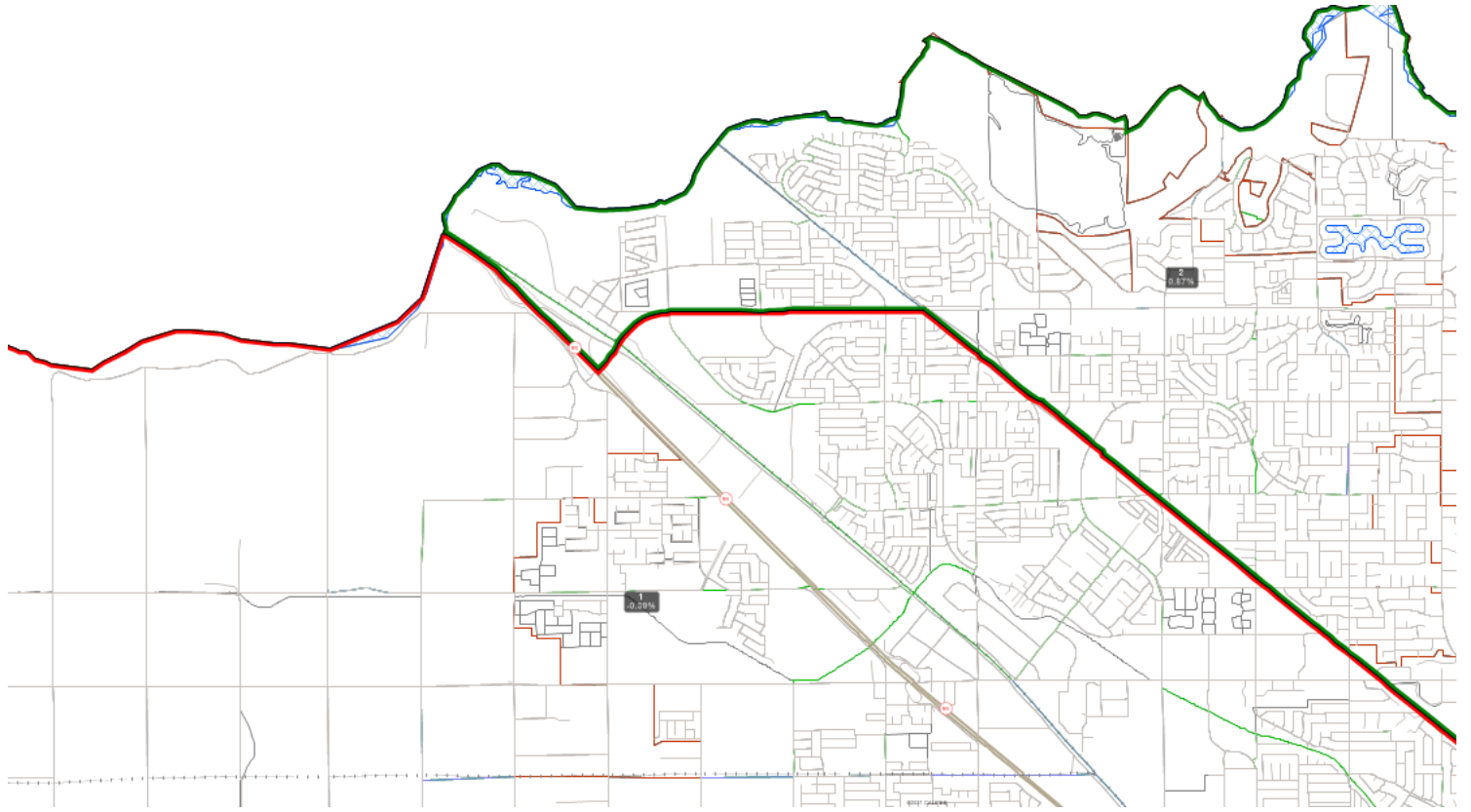
Fair Representation Coalition of Fresno County

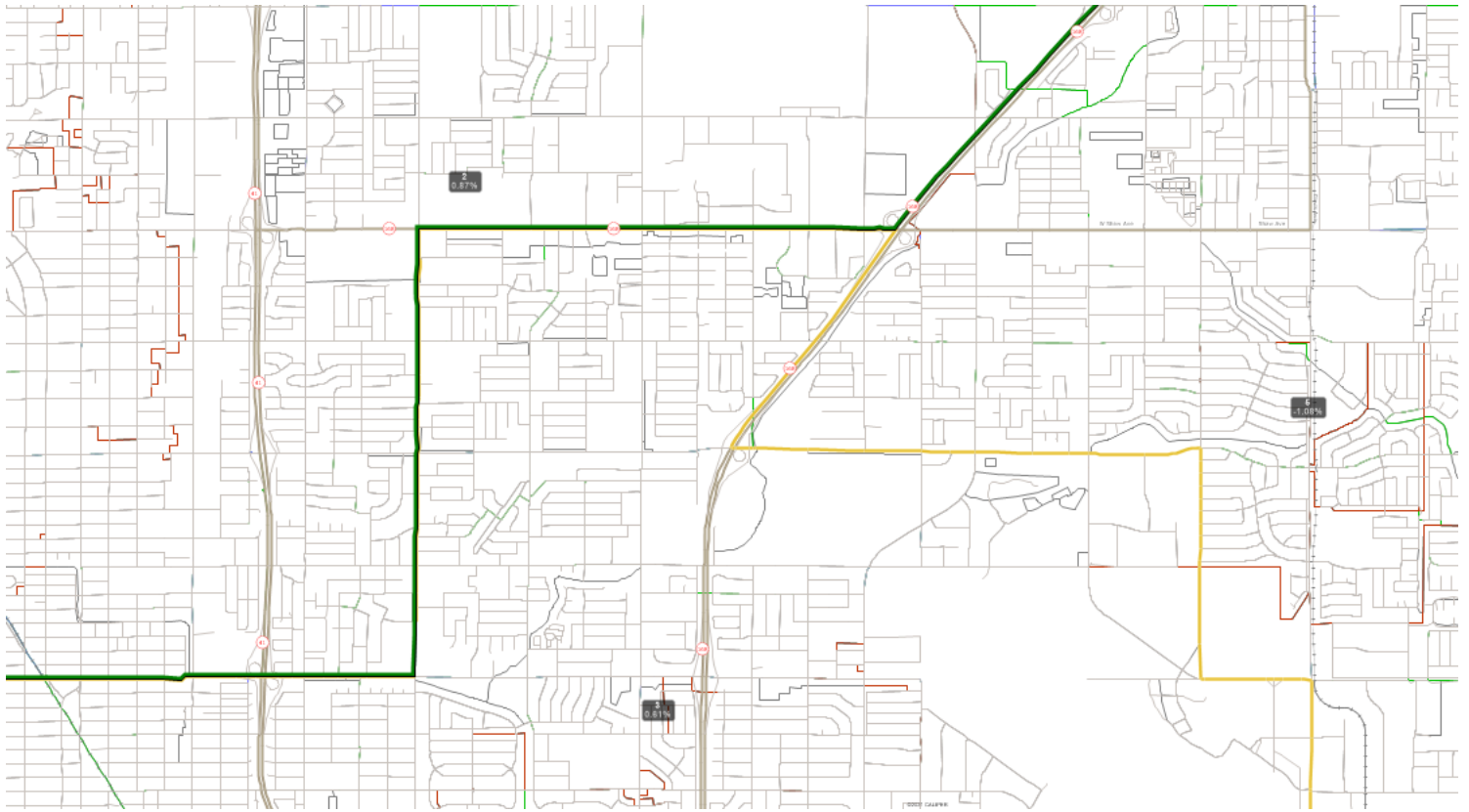
Enclosures 2



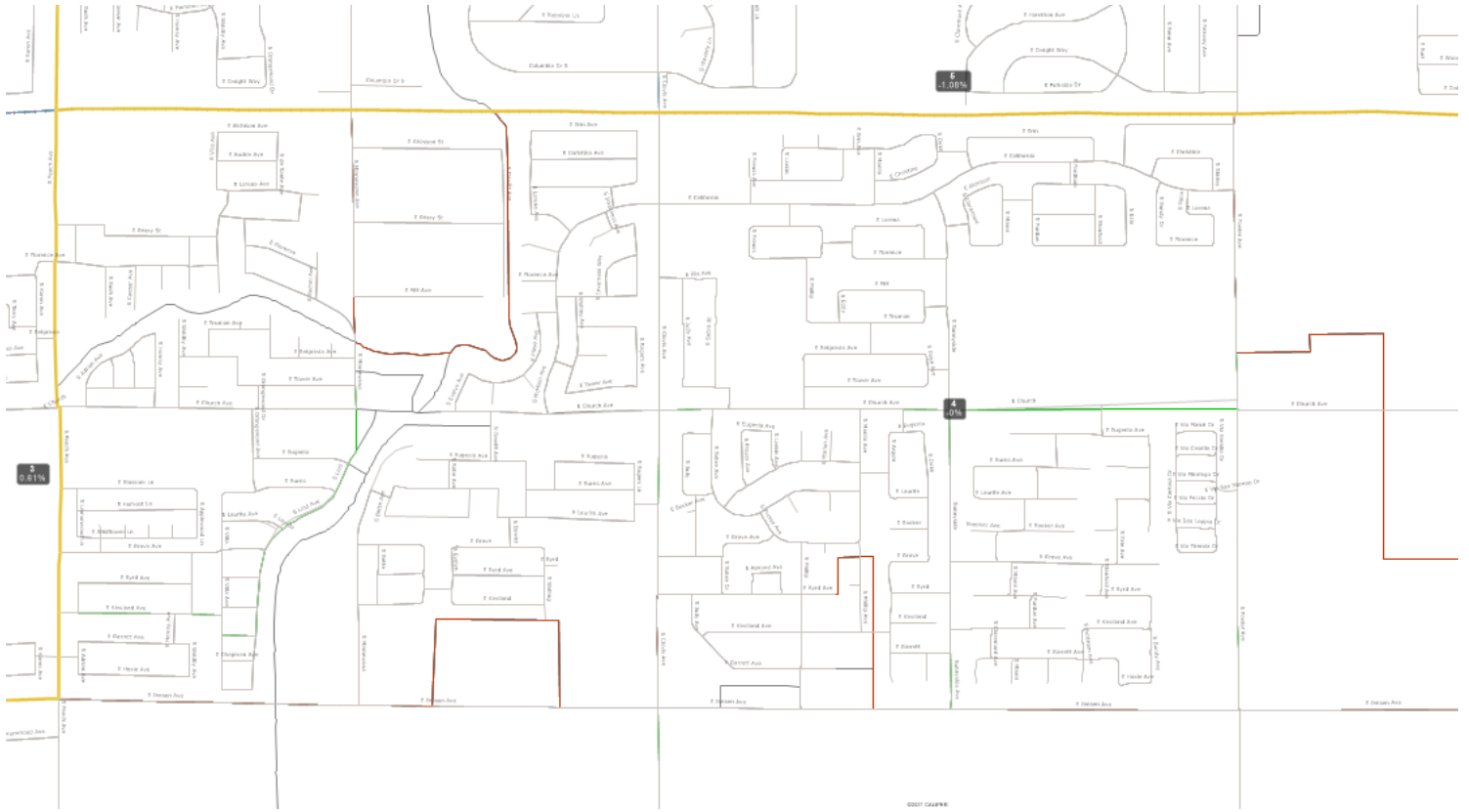
©2021 CALIPER

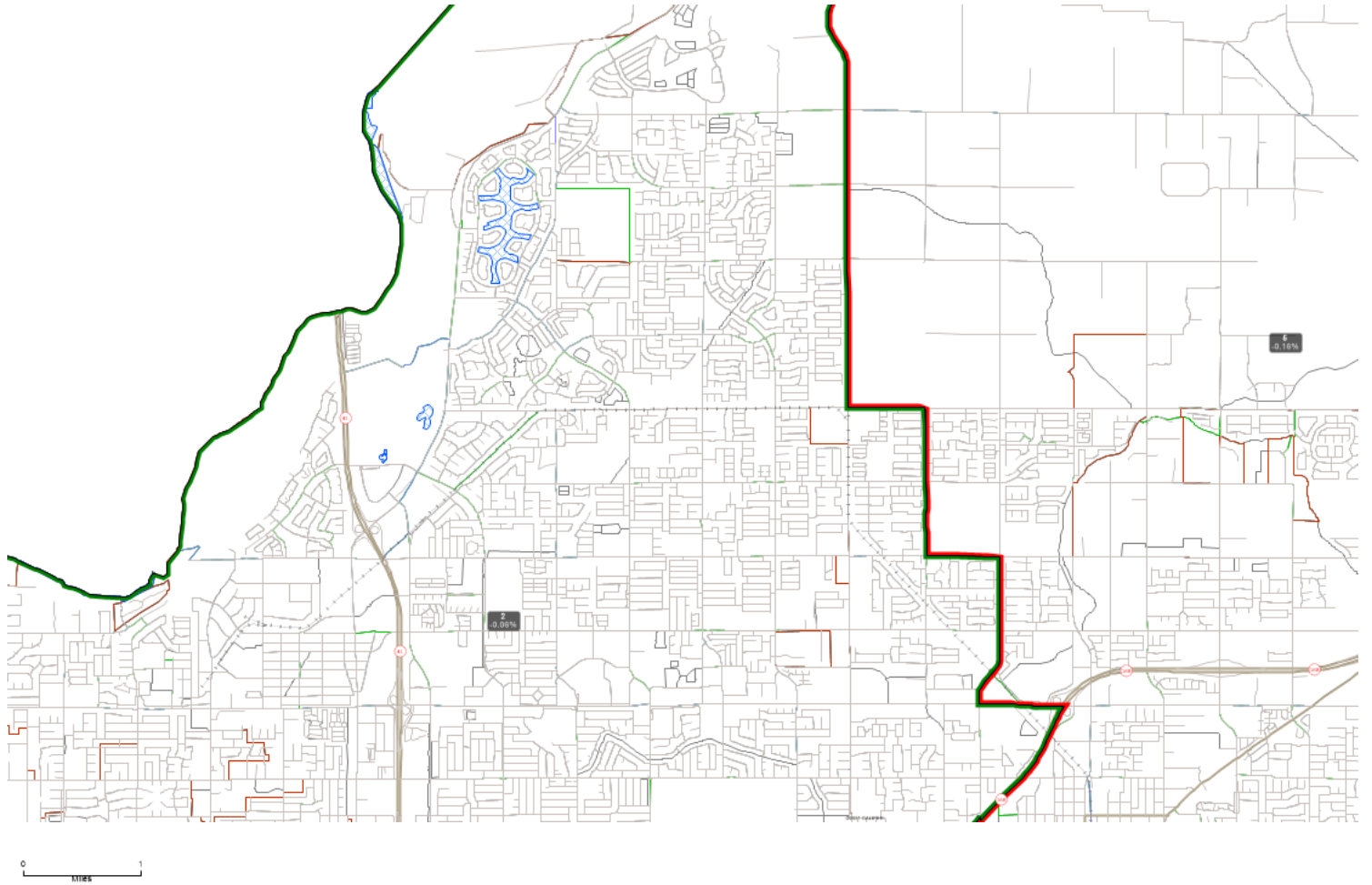






FRC_Draft2 - frc_fresnocounty





District	Population	Deviation	%	Hispanic	%	White	%	Black	%	Nat. American	%	Asian	%	Pacific Islander	%	Other	%	Other/Multi-race	%
1	201,917	-789	-0.39%	126,585	63.00%	30,928	15.40%	15,686	7.80%	1,956	1.00%	22,807	11.40%	307	0.20%	1,556	0.60%	1,093	0.60%
2	201,595	-111	-0.06%	68,984	34.20%	89,398	44.30%	11,260	5.60%	3,144	1.60%	24,770	12.30%	483	0.20%	2,302	1.10%	1,253	1.10%
3	202,936	1230	0.61%	131,067	64.60%	28,651	14.10%	13,615	6.70%	2,551	1.30%	24,115	11.90%	302	0.10%	1,441	0.70%	1,191	0.70%
4	201,698	-8	0.00%	149,881	74.30%	32,000	15.90%	2,398	1.20%	1,661	0.80%	13,618	6.80%	160	0.10%	1,415	0.70%	564	0.70%
5	201,384	322	-0.16%	64,135	31.80%	90,375	44.90%	6,297	3.10%	4,577	2.30%	31,540	15.70%	511	0.30%	2,711	1.30%	1,238	1.30%
Totals	1,008,530			540,652	53.60%	271,352	25.90%	49,256	4.90%	13,889	1.40%	116,850	11.60%	1,763	0.20%	9,425	0.90%	5,339	0.90%

District	Population	CVAP Total	% CVAP	CVAP Hispanic	%	White	%	Black	%	Nat. American	%	Asian/Pacific Islander	%
1	201,917	102,354	50.94%	52,177	51.00%	26,643	26.00%	11,562	11.30%	1,067	1.00%	10,544	10.30%
2	201,595	143,568	71.22%	39,078	27.20%	80,718	56.20%	7,616	5.30%	1,401	1.00%	14,295	10.00%
3	202,936	111,091	54.74%	59,780	53.80%	27,102	24.40%	9,136	8.20%	1,160	1.00%	13,536	12.20%
4	201,698	102,174	50.66%	62,905	61.60%	28,059	27.50%	1,462	1.40%	1,617	1.60%	7,782	7.60%
5	201,384	125,860	62.50%	33,350	26.50%	71,302	56.70%	3,789	3.00%	1,659	1.30%	15,487	12.30%
Totals	1,008,530	585,047	58.01%	247,290	42.30%	233,824	40.00%	33,565	5.70%	6,904	1.20%	61,644	10.50%

District	Population	Reg. Vote Total	% CVAP	Reg. Vote Latino est.	%	Spanish Surnamed	%	Reg. Vote White est.	%	Black	%	Asian Surnamed	%
1	201,917	78,435	39.04%	38,551	49.20%	35,727	44.50%	13,060	16.70%	11,562	14.70%	4,207	5.40%
2	201,595	113,732	56.42%	27,244	24.00%	25,277	22.20%	50,503	44.40%	7,616	6.70%	5,451	4.80%
3	202,936	79,966	39.40%	43,434	54.30%	39,957	50.00%	12,026	15.00%	9,136	11.40%	2,439	3.10%
4	201,698	77,242	38.30%	46,860	60.70%	43,736	56.60%	16,696	21.60%	1,462	1.90%	3,358	4.30%
5	201,384	104,747	52.01%	24,281	23.20%	22,557	21.50%	47,145	45.00%	3,789	3.60%	4,560	4.40%
Totals	1,008,530	454,122	45.03%	180,370	39.70%	167,254	36.80%	139,430	30.70%	33,565	7.40%	20,015	4.40%

 = majority %