



DEPARTMENT OF AGRICULTURE  
and  
WEIGHTS AND MEASURES



# 2022 CROP REPORT



*Ag Detector Dogs:* **SNIFFING OUT INVASIVE PESTS!**



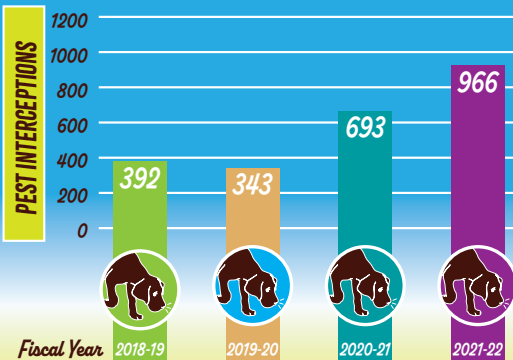


# CALIFORNIA DETECTOR DOG TEAM STATISTICS

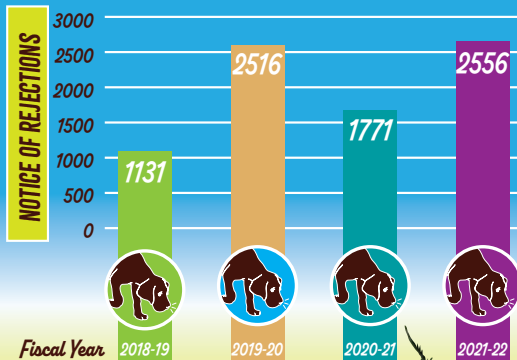
| COUNTY         | AREA COVERED           | # OF TEAMS |
|----------------|------------------------|------------|
| ALAMEDA        | ALAMEDA COUNTY         | 1          |
| CONTRA COSTA   | SAN FRANCISCO BAY AREA | 1          |
| FRESNO         | FRESNO COUNTY          | 1          |
| LOS ANGELES    | LOS ANGELES COUNTY     | 3          |
| SACRAMENTO     | SACRAMENTO VALLEY      | 2          |
| SAN BERNARDINO | INLAND EMPIRE AREA     | 1          |
| SAN DIEGO      | SAN DIEGO COUNTY       | 2          |
| SANTA BARBARA  | SANTA BARBARA COUNTY   | 1          |
| SANTA CLARA    | SOUTH BAY AREA         | 1          |
| YOLO           | SACRAMENTO VALLEY      | 0          |



## PEST INTERCEPTIONS



## VIOLATION OF PLANT LAWS & REGULATIONS



### The Japanese Beetle

(POPILLIA JAPONICA) A species of scarab beetle that has migrated from Japan to North America and some regions of Europe, it is a noted pest to roughly 300 species of plants, including rose bushes, grapes, hops, canna, crape myrtles, birch trees, linden trees, and others.

STATS: WIKIPEDIA



# TABLE OF CONTENTS



## Page

|   |            |
|---|------------|
| Opening Letter                                  | 2          |
| Top Ten Crops                                   | 3          |
| The Multi-Club: In the Billions/Millions        | 4          |
| The BIG Reveal: Total Value for 2022 Crops      | 5          |
| Growth Over 20 Years                            | 5          |
| Shipping Out Yonder: 2022 Fresno County Exports | 6          |
| Ag Detector Dogs: Sniffing Out Invasive Pests!  | 7-8        |
| Welcoming <u>Two</u> New Dog Teams!             | 9-10       |
| Three Cheers for Our Wonderful Canine Teams!    | 11         |
| 2022 Field Crops                                | 12-13      |
| 2022 Seed Crops                                 | 13         |
| 2022 Vegetable Crops                            | 14-16      |
| 2022 Fruit & Nut Crops                          | 16-20      |
| 2022 Nursery Products                           | 20         |
| 2022 Livestock & Poultry                        | 21-22      |
| 2022 Apiary Products & Pollination              | 23         |
| 2022 Industrial Crops                           | 23         |
| 2022 Sustainable Agriculture                    | 24         |
| Fun Facts About Our Sniffer Crew!               | 25         |
| Thank You to All Who Contributed                | Back Cover |



### *The Mediterranean Fruit Fly*

(CERATITIS CAPITATA OR MEDFLY)

This fly is considered the most important agricultural pest in the world. The Medfly has spread throughout the Mediterranean region, southern Europe, the Middle East, Western Australia, South, Central and North America and has infested a wide range of commercial and garden fruits, nuts and vegetables.

STATS: USDA





**COUNTY OF FRESNO  
DEPARTMENT OF AGRICULTURE**

**Melissa Cregan**

Agricultural Commissioner/  
Sealer of Weights & Measures

**Address:**

1730 S. Maple Avenue  
Fresno, California 93702-4596

**Phone:**

(559) 600 -7510

**Web:**

[www.co.fresno.ca.us/fresnoag](http://www.co.fresno.ca.us/fresnoag)

**Email:**

[fresnoag@fresnocountyca.gov](mailto:fresnoag@fresnocountyca.gov)

*The County of Fresno  
is an Equal Employment  
Opportunity Employer*



Karen Ross, Secretary  
California Department of Food and Agriculture

and

The Honorable Board of Supervisors  
County of Fresno

Sal Quintero, Chairman

Steve Brandau  
Buddy Mendes

Nathan Magsig  
Brian Pacheco

Paul Nerland,  
County Administrative Officer

It is my pleasure to submit the 2022 Fresno County Crop and Livestock Report. This report is prepared in accordance with Sections 2272 and 2279 of the California Food and Agricultural Code; and summarizes the acreage, production, and value of agricultural commodities produced in Fresno County. **The figures contained herein represent gross returns to the producers and does not reflect actual net profit.**

Fresno County's total gross production value for 2022 was \$8,095,546,000. This represents an increase of \$9,979,000 or 0.12% above the previous year's total.

Grapes moved up to our leading agricultural commodity in Fresno County with a gross value of \$1,241,178,000 which represents 15.3% of the total gross value of all crops produced in 2022. The total gross value of almonds is in the number two spot at \$1,141,308,000, followed by pistachios at \$705,941,000.

Fresno County's agricultural strength is based on the diversity of crops produced. Included in the 2022 report are over 183 different commodities, 77 of which have a gross value in excess of \$1,000,000. Although individual commodities may experience difficulties from year-to-year, Fresno County continues to supply the highest quality of food and fiber nationwide and abroad to more than 90 countries around the world.

In this year's report we highlight the use of detector canines in Fresno County and California to detect and prevent the establishment of invasive pests. Pest exclusion efforts are one of the many ways the California Department of Food and Agriculture, California Agricultural Commissioners, and their staff protect agriculture.

This report is our yearly opportunity to recognize the growers, shippers, ranchers, and other businesses instrumental to and supportive of agriculture in Fresno County. I would like to extend my thanks and appreciation to industry for their continuous efforts in providing the vital information that enables the compilation of this report. Thank you to all my staff, especially Angel Gibson, Shoua VangXiong and Amanda Zito; and Gina Hill with the County of Fresno Internal Services Department for the graphic design. Without their hard work and valuable input, this report would not be possible.

Respectfully submitted,

Melissa Cregan  
Agricultural Commissioner/Sealer of Weights and Measures

**TOP**

**10**

**CROPS**

**Rank**

**2022  
Total Value**

**2021  
Rank**



**1**

**GRAPES**

**\$1,241,178,000**

**2**



**2**

**ALMONDS**

**\$1,141,308,000**

**1**



**3**

**PISTACHIOS**

**\$705,941,000**

**3**



**4**

**MILK**

**\$655,138,000**

**5**



**5**

**POULTRY\***

**\$538,305,000**

**4**



**6**

**CATTLE & CALVES**

**\$488,665,000**

**6**



**7**

**TOMATOES**

**\$429,263,000**

**8**



**8**

**PEACHES**

**\$368,392,000**

**10**



**9**

**GARLIC**

**\$351,875,000**

**7**



**10**

**MANDARINS**

**\$240,684,000**

**11**

Includes commodity totals reported in the "Other" categories such as organic, by-products, processed etc.

\* Includes Chickens, Ducks, Geese, Gamebirds, Turkeys and Eggs

### **Karnal Bunt**

Karnal bunt is a fungal disease of wheat, durum wheat, and triticale. It invades the kernels and obtains nutrients from the endosperm, leaving behind waste products with a disagreeable odor that makes bunted kernels too unpalatable for use in flour or pasta.



# THE MULTI CLUB: IN THE BILLIONS/MILLIONS



## Top Crops



**\$1,241,177,874**

*Billion*  
**Grapes**

**GROWERS HAVE**



**\$1,141,308,386**

*Billion*  
**Almonds**

**TEAM SPIRIT!**



**\$705,941,102**

*Million*  
**Pistachios**



| \$600+<br>MILLION | \$500+<br>MILLION           | \$400+<br>MILLION           | \$300+<br>MILLION | \$200+<br>MILLION       | \$150+<br>MILLION   | \$100+<br>MILLION |
|-------------------|-----------------------------|-----------------------------|-------------------|-------------------------|---|-------------------|
| Milk              | Poultry<br>(including Eggs) | Cattle & Calves<br>Tomatoes | Peaches<br>Garlic | Mandarins<br>Nectarines | Oranges<br>Plums<br>Cotton<br>Apiary<br>Products &<br>Pollination | Lettuce           |

## More by the Million

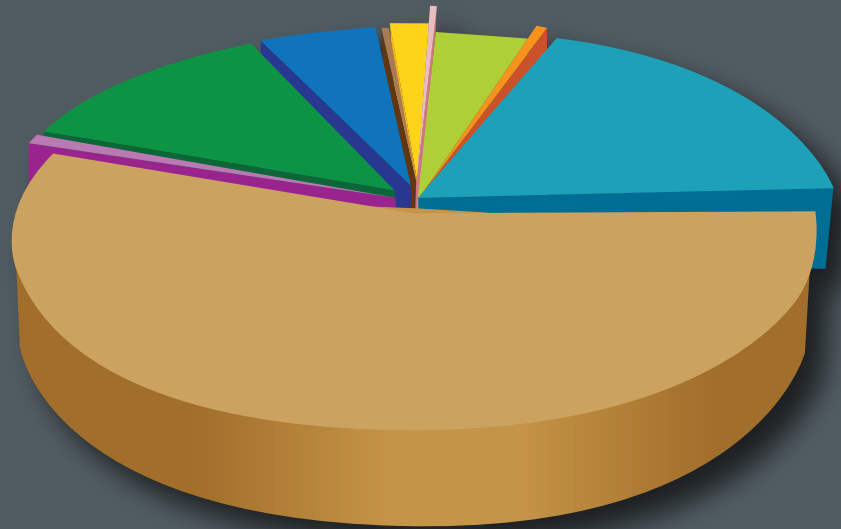
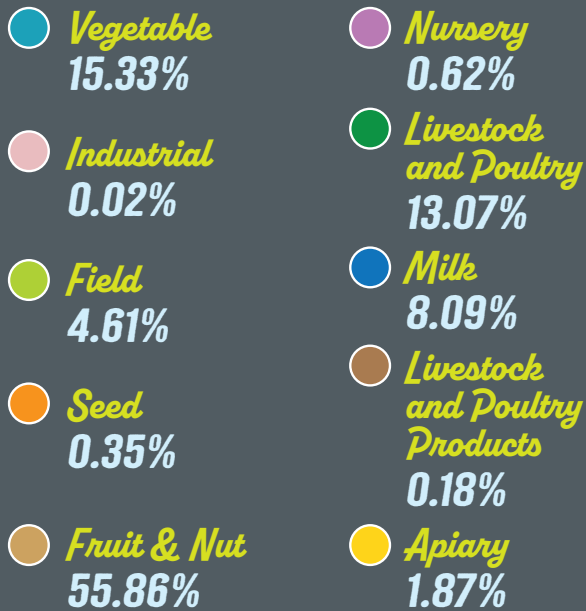
|                           |    |                       |   |
|---------------------------|----|-----------------------|---|
| Onions                    | 79 | Barley                | 7 |
| Corn                      | 75 | Asparagus             | 5 |
| Alfalfa                   | 64 | Carrots               | 4 |
| Wheat                     | 59 | Parsley               | 4 |
| Cantaloupe                | 58 | Rice                  | 4 |
| Nursery                   | 50 | Olives                | 4 |
| Lemons                    | 44 | Tangelo               | 4 |
| Cherries                  | 40 | Bok Choy              | 3 |
| Blueberries               | 39 | Chili Peppers         | 3 |
| Honeydew Melon            | 38 | Daikon                | 2 |
| Pomegranates              | 22 | Winter Forage         | 2 |
| Mixed Melons              | 22 | Bittermelon           | 2 |
| Sheep & Lambs             | 21 | Oat                   | 2 |
| Apricots                  | 19 | Mustard               | 2 |
| Persimmons                | 19 | Yams                  | 2 |
| Walnuts                   | 18 | Celery                | 2 |
| Bell Peppers              | 18 | Irrigated Pasture     | 2 |
| Pears, Asian & European   | 17 | Blackberries          | 1 |
| Triticale                 | 17 | Cauliflower           | 1 |
| Watermelon                | 15 | Pomelo                | 1 |
| Rangeland                 | 14 | Gourd                 | 1 |
| Manure                    | 13 | Moringa               | 1 |
| Beans (Shell & Pod Types) | 12 | Basil                 | 1 |
| Kiwi                      | 11 | Kohlrabi              | 1 |
| Grapefruit                | 11 | Misc. Other Livestock | 1 |
| Eggplant                  | 11 | Fennel                | 1 |
| Broccoli                  | 10 | Figs                  | 1 |
| Squash                    | 8  | Ong Choy              | 1 |
| Swine                     | 8  | Kale                  | 1 |
| Sorghum                   | 8  | Peanut                | 1 |



# THE BIG REVEAL: TOTAL VALUE FOR 2022

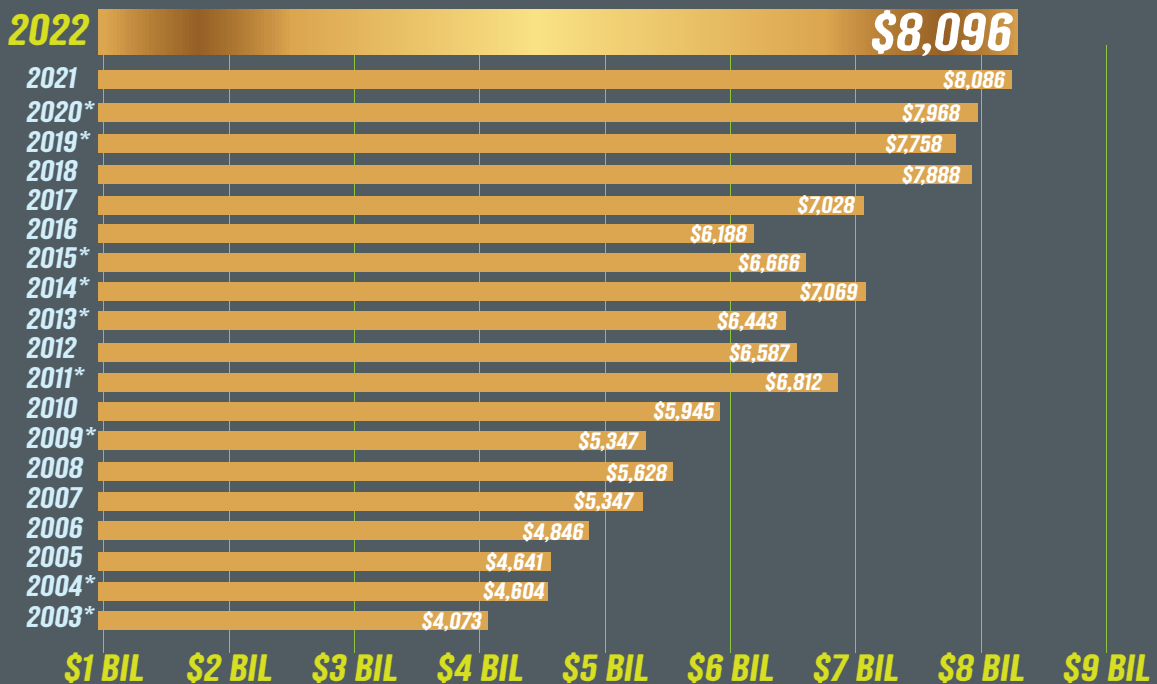
## \$8,095,546,000

### RELATIONSHIP IN TERMS OF TOTAL VALUE For 2022 Crop Year



2003  
through  
2022

### GROWTH OVER 20 YEARS FOR FRESNO COUNTY AGRICULTURE



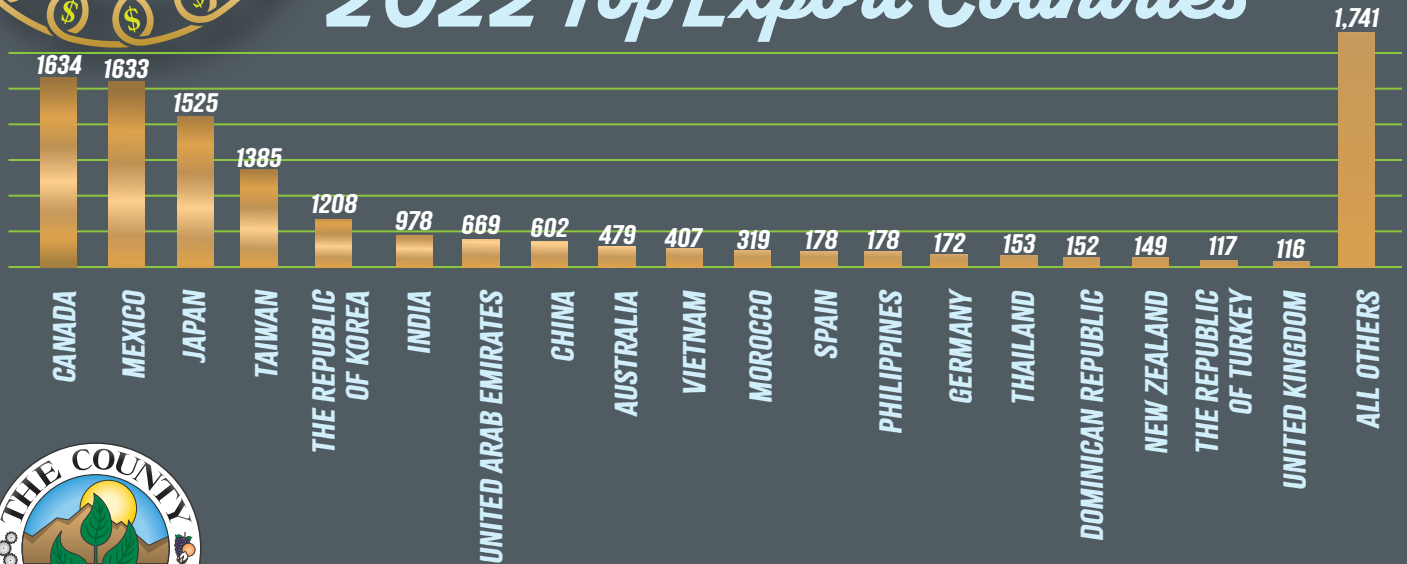
\*Revised

GROSS PRODUCTION IN VALUE (IN \$BILLIONS)



# SHIPPING OUT YONDER: 2022 FRESNO COUNTY EXPORTS

## 2022 Top Export Countries



### IN 2022,

Fresno County Inspectors issued a total of

**13,795**

**PHYTOSANITARY CERTIFICATES**

for

**109**

**UNIQUE COMMODITIES**

destined for markets in

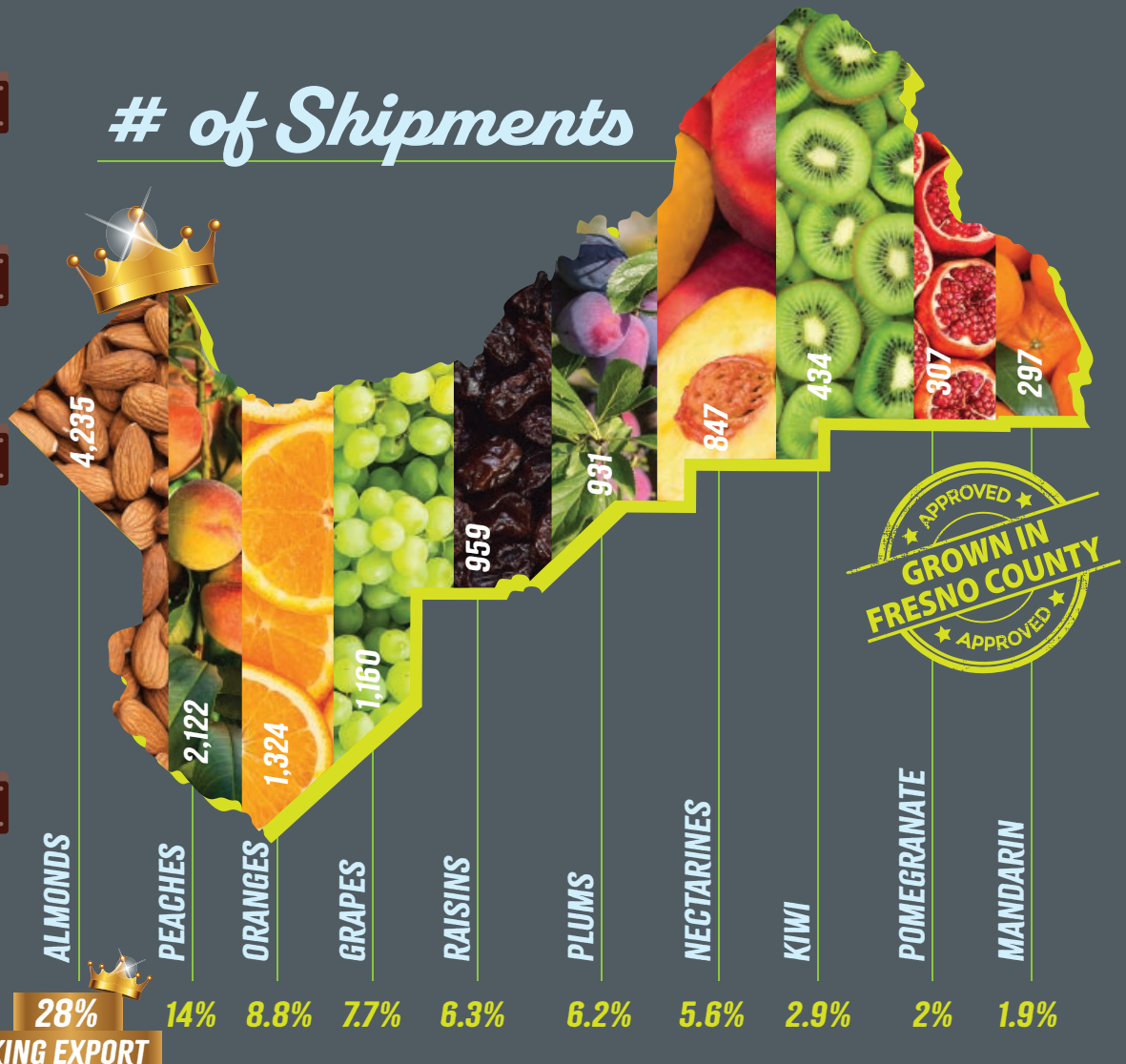
**90 COUNTRIES AROUND THE WORLD.**

In addition,

**681 ACRES**

of export seed fields of alfalfa, lettuce and onion were inspected and certified.

## # of Shipments





# Ag Detector Dogs: SNIFFING OUT INVASIVE PESTS!

*The agricultural protection sector is one of the areas where a dog's supreme sense of smell has made them integral tools in our fight to protect our nation's agriculture.*



*Excellent Brodee!*



Dogs, due to their affinity for humans, ability to learn a variety of tasks, and acute sense of smell, have been put to work in various capacities for centuries. The agricultural protection sector is one of the areas where a dog's supreme sense of smell has made them integral tools in our fight to protect our nation's agriculture. Detector dogs in agricultural protection got their official start at the federal level in California in 1984, when the United States Department of Agriculture Animal and Plant Health Inspection Service (APHIS) established its detector dog program. The "Beagle Brigade" began at the Los Angeles International Airport with one beagle trained to sniff out plants and animal products in luggage and carry-on items arriving on international flights. Since then, the program has expanded to 198 teams within the U.S. Department of Homeland Security's Customs and Border Protection (CBP). The teams provide agricultural screening at border crossings, air passenger terminals, cruise terminals, cargo warehouses, and mail facilities that process commodities and/or international passengers.



In 2006, following the successful use of detector dogs at the federal level, a cooperative effort between APHIS, the California Department of Food and Agriculture (CDFA), and the California Agricultural Commissioners and Sealers Association (CACASA) allocated funds to use detector dogs to screen unmarked/undeclared parcels for prohibited plant materials and soil. Initially funded as a one-year program, the Pest Surveillance Canine Inspection Teams (PSCIT) consisted of two dog teams. One dog team covered Northern California based in Contra Costa County, while the second team covered Southern California based in San Bernardino County. In 2009 the name was changed to California Dog Team Program and additional teams were gradually added. Currently the program operates thirteen dog teams based out of nine California counties. Teams work regionally with access to more than 200 facilities in 32 of California's 58 counties. Funding for the program is provided through the Plant Protection Act authorized by the United States Farm Bill.

The teams complete an intense 10-week training at the USDA National Detector Dog Training Center in Newnan, Georgia. Handlers are paired with a dog that they work well with as a team. The dogs are trained to use their sense of smell and "alert" on packages that contain agricultural products, and the handlers are trained on how to interact with and care for the dog. Each dog in the program has been rescued from animal shelters, breed rescue groups, newspaper/internet ads, etc. Dogs selected for the program have been screened for high food drive, sociability, intelligence, physical soundness, and low anxiety levels.



# Ag Detector Dogs: SNIFFING OUT INVASIVE PESTS!

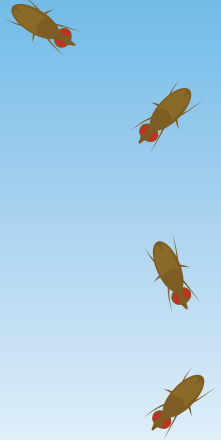


The Fresno County Agricultural Commissioner's (CAC) office is home to two agricultural detector dog teams. One team is part of the California Detector Dog Team program, while the second team is unique as the only county-managed detector dog team in California. We work with a California based dog trainer to provide the dog and train the handler to work as a team with costs incorporated into the department's annual budget. Both detector dogs are trained to find agricultural material in parcels moving through our various parcel terminals including UPS, FedEx, Amazon, and others. Authority to inspect parcels is provided for by various laws, regulations, and Memorandums of Understanding (MOUs). There is one main difference between the teams in that the MOU that allows for the inspection of U.S. Mail in USPS Distribution Centers is specific to the California Detector Dog Team program.

Quarantine laws and regulations evaluate the risk associated with moving articles that could spread invasive pests and establish restrictions. **The origin of a parcel is a key factor in determining the risk and whether the shipment is allowed in California.** All parcels with agricultural material are required to be labeled with the origin and contents of the package. This is so inspectors know which packages to inspect. Not everyone follows the rules, and some parcels with agricultural material are shipped without markings. **Our dogs can alert on these unmarked packages which makes our inspectors aware that the parcel contains agricultural material.** Once a dog alerts on a parcel or container, CAC staff inspect the contents and determine compliance according to existing plant quarantines. When pests and/or diseases are discovered, appropriate action is taken based on established pest risk classifications. Depending on the determined risk, the contents are either released to the recipient, treated to mitigate the risk, returned to origin, or destroyed following specific protocols.

Invasive pests can have a devastating impact on our natural habitats and the agricultural economy of Fresno County, one of the **biggest and most diverse in the United States.** State-wide, California Dog Team interceptions from July 1, 2021 to June 30, 2022 resulted in the interception of 966 plant pests including Caribbean fruit flies and reniform nematode. These invasive pests are not known to occur in California. An introduction of a single breeding population of an invasive pest can potentially incur millions in quarantine and eradication costs. California's Detector Dog Teams are an invaluable tool in protecting California's environment and agriculture.

*Once a dog alerts on a parcel or container, CAC staff inspect the contents and determine compliance according to existing plant quarantines.*



*Way to go Rufus!*





# Meet Our Teams!

## IN 2022, THE FRESNO CAC WELCOMED TWO NEW DOG TEAMS!

DEPARTMENT OF AGRICULTURE  
and  
WEIGHTS AND MEASURES



### CALIFORNIA DETECTOR DOG TEAM: *Kaitlyn DeMott and Brodee*

Kaitlyn Demott is a 2020 graduate of California State University Fresno with a B.S. in Animal Science. She joined the Fresno CAC in November of 2021. Brodee is a 2-year-old Black Labrador Retriever that began his detection training at Pacific Coast K9 in Blaine, Washington. He completed his detection training at the National Detector Dog Training Center in Newnan, Georgia in January of 2022. **Brodee teamed up with Fresno County K9 Handler Kaitlyn Demott in April of 2022 and they began their training as a detector team.** Brodee has found many parcels containing plant material since he began working in Fresno County. His favorite fruit to find is mangos, and he will often dig a hole through the parcel while alerting on them.

### FRESNO CAC MANAGED DOG TEAM: *Amanda Clark and Rufus*

Amanda Clark is a 2016 graduate of Fresno State with a B.S. degree in Animal Science. She first joined the Fresno CAC in 2016 as an Extra Help pest detection trapper. She was hired as a full-time inspector in May of 2021. Rufus is a one-year-old German Shepard mix who was rescued from a Hesperia animal shelter in May of 2022 when he was approximately six months old. Dog trainer Stephanie Taunton trained him in scent detection. **Amanda officially became his handler on September 23, 2022.** His favorite terminal is FedEx Express where he can burn some young pup energy by freely running up and down the belt during their searches. When alerting on packages, Rufus sits, taps the box with his nose, and stares at it with extreme focus.



*For more information about our  
Fresno CAC Dog Teams, please visit our website at:*

[www.co.fresno.ca.us/departments/agricultural-commissioner/  
pest-exclusion-inspections-dmi](http://www.co.fresno.ca.us/departments/agricultural-commissioner/pest-exclusion-inspections-dmi)

## *What a great addition to Fresno County AG!*

# Past Dog Team Finds OF GREAT NOTE!



## 2009 Asian Citrus Psyllid nymphs

were found on curry leaves in passenger luggage en route to Fresno from India via a parcel facility. The nymphs tested positive for Citrus Greening Disease (Huanglongbing), a devastating citrus disease, and were destroyed.



SOURCE: [www.invasive.org/browse/detail.cfm?imgnum=5006085](http://www.invasive.org/browse/detail.cfm?imgnum=5006085)

## 2021 Two Puff Adders, two Gaboon Vipers, and one Eastern Diamondback Rattlesnake,

all non-native venomous snakes were found at a parcel facility. Criminal charges for both the shipper and receiver were handled by the Department of Fish and Wildlife and the snakes were taken in by the Fresno Chaffee Zoo.



## 2021 Two large boxes of bare-root Prunus spp. found at a parcel facility.

The trees were illegally imported from China. That find led to a local farm that had additional illegally imported trees and vines planted in pots (49 loquat trees, 266 grapevines, and 243 assorted Prunus spp.). All of the plants were destroyed.



GABOON VIPER NESTING POTTED PLANTS



# THREE CHEERS

## For our wonderful canine teams!

DEPARTMENT OF AGRICULTURE  
and  
WEIGHTS AND MEASURES

A pest isn't best for our Golden State.

These invasive little creatures must not be a potentate.

For if allowed to prosper they'll surely do us harm.

Wreaking havoc and great discord when we try to farm.

*So we deploy the mighty sniffers and put them to the test!*

To seek them out from plantlings they always do their best.

Please give 3 cheers for Rufus, Brodee and their crew.

They are forever vigilant in all their tasks they do.

And as they perform their daily, with aplomb and great esteem.

We honor them as heroes, always true for our local team!

*We appreciate  
all that you do!*



# 2022 CROP HIGHLIGHTS

## Field Crops



|                           |      |                      | PRODUCTION            |                      |             | VALUE |                    |                |
|---------------------------|------|----------------------|-----------------------|----------------------|-------------|-------|--------------------|----------------|
| CROP                      | YEAR | HARVESTED<br>ACREAGE | ACRE                  | TOTAL                | PER<br>UNIT |       | PER<br>UNIT        | TOTAL          |
| <b>Corn</b>               |      |                      |                       |                      |             |       |                    |                |
| Silage                    | 2022 | 24,890               | 20.81                 | 518,000              | ton         | \$    | 91.00 <sup>a</sup> | \$ 47,138,000  |
|                           | 2021 | 25,490               | 23.54                 | 600,000              | ton         | \$    | 61.00 <sup>a</sup> | \$ 36,600,000  |
| <b>Cotton</b>             |      |                      |                       |                      |             |       |                    |                |
| Lint                      | 2022 | 36,700               | 1,540.00 <sup>b</sup> | 113,000 <sup>c</sup> | bale        | \$    | 2.22 <sup>d</sup>  | \$ 126,443,000 |
|                           | 2021 | 40,140               | - <sup>+</sup>        | - <sup>+</sup>       | bale        | \$    | - <sup>+</sup>     | \$ 127,225,000 |
| Seed                      | 2022 |                      |                       | 39,200               | ton         | \$    | 520.00             | \$ 20,384,000  |
|                           | 2021 |                      |                       | - <sup>+</sup>       | ton         | \$    | - <sup>+</sup>     | \$ 18,383,000  |
| COTTON TOTAL <sup>e</sup> | 2022 | 36,700               |                       |                      |             |       |                    | \$ 146,827,000 |
|                           | 2021 | 40,140               |                       |                      |             |       |                    | \$ 145,608,000 |
| <b>Hay</b>                |      |                      |                       |                      |             |       |                    |                |
| Alfalfa                   | 2022 | 24,500               | 9.06                  | 222,000              | ton         | \$    | 265.00             | \$ 58,830,000  |
|                           | 2021 | 26,020               | 9                     | 234,000              | ton         | \$    | 242.00             | \$ 56,628,000  |
| Wheat                     | 2022 | 22,400               | 4.33                  | 97,000               | ton         | \$    | 231.00             | \$ 22,407,000  |
|                           | 2021 | 30,130               | 2.46                  | 74,100               | ton         | \$    | 200.00             | \$ 14,820,000  |
| Other <sup>f</sup>        | 2022 | 12,970               | 2.81                  | 36,500               | ton         | \$    | 190.00             | \$ 6,935,000   |
|                           | 2021 | 102,890              | 3.1                   | 319,000              | ton         | \$    | 174.00             | \$ 55,506,000  |



# 2022 CROP HIGHLIGHTS

## Field Crops



### Wheat

#### Grain

|      |        |      |        |     |           |               |
|------|--------|------|--------|-----|-----------|---------------|
| 2022 | 23,000 | 2.8  | 64,400 | ton | \$ 397.00 | \$ 25,567,000 |
| 2021 | 21,570 | 3.13 | 67,500 | ton | \$ 237.00 | \$ 15,998,000 |

#### Silage

|      |        |       |         |     |          |               |
|------|--------|-------|---------|-----|----------|---------------|
| 2022 | 17,900 | 11.78 | 211,000 | ton | \$ 50.00 | \$ 10,550,000 |
| 2021 | 10,250 | 8.07  | 82,700  | ton | \$ 61.00 | \$ 5,045,000  |



### Other<sup>g</sup>

|      |         |  |  |  |  |               |
|------|---------|--|--|--|--|---------------|
| 2022 | 874,080 |  |  |  |  | \$ 55,184,000 |
| 2021 | 881,900 |  |  |  |  | \$ 39,587,000 |

### TOTAL

|      |           |  |  |  |  |                |
|------|-----------|--|--|--|--|----------------|
| 2022 | 1,036,440 |  |  |  |  | \$ 373,438,000 |
| 2021 | 1,138,400 |  |  |  |  | \$ 369,792,000 |

a Field price

b 500 pounds of lint per acre

c 500 pounds lint per bale

d Price per pound, 504 pounds gross weight per bale

e Does not include cotton seed for planting

f Includes hay from: barley, wheatgrass, oats, sudan grass, triticale and winter forage

g Includes alfalfa (silage), barley (forage/silage/grain), cotton by-products, field stubble (crops grazed-includes acres not included in total field crop acreage), industrial hemp, irrigated pasture, oat (silage), rangeland, rice (grain), rye (silage), sorghum (grain & silage), triticale (forage), winter forage. **ORGANIC:** barley, wheat (grain).

+ Not previously reported in this format

# 2022 CROP HIGHLIGHTS

## Seed Crops



### Alfalfa

#### Certified

|      |       |     |         |    |         |              |
|------|-------|-----|---------|----|---------|--------------|
| 2022 | 1,060 | 902 | 956,000 | lb | \$ 3.65 | \$ 3,489,000 |
| 2021 | 1,320 | 639 | 843,000 | lb | \$ 2.74 | \$ 2,310,000 |



### Vegetable<sup>a</sup>

|      |       |  |  |  |  |               |
|------|-------|--|--|--|--|---------------|
| 2022 | 1,640 |  |  |  |  | \$ 15,284,000 |
| 2021 | 1,320 |  |  |  |  | \$ 12,330,000 |



### Other<sup>b</sup>

|      |       |  |  |  |  |              |
|------|-------|--|--|--|--|--------------|
| 2022 | 2,240 |  |  |  |  | \$ 9,633,000 |
| 2021 | 1,670 |  |  |  |  | \$ 9,511,000 |

### TOTAL

|      |       |  |  |  |  |               |
|------|-------|--|--|--|--|---------------|
| 2022 | 4,940 |  |  |  |  | \$ 28,406,000 |
| 2021 | 4,310 |  |  |  |  | \$ 24,151,000 |

a Bean garbanzo, broccoli, lettuce (head & leaf), and onion.

b Alfalfa non-certified, cotton certified.



# 2022 CROP HIGHLIGHTS

## Vegetable Crops



|  | CROP                   | YEAR            | HARVESTED<br>ACREAGE | PRODUCTION |         |             | VALUE       |                |
|--|------------------------|-----------------|----------------------|------------|---------|-------------|-------------|----------------|
|  |                        |                 |                      | ACRE       | TOTAL   | PER<br>UNIT | PER<br>UNIT | TOTAL          |
|    | Corn, Sweet            | 2022            | 3,460                | 9.14       | 31,600  | ton         | \$ 7.62.00  | \$ 24,079,000  |
|  |                        | 2021            | 6,480                | 7.41       | 48,000  | ton         | \$ 691.00   | \$ 33,168,000  |
|    | Eggplant <sup>a</sup>  | 2022            | 830                  | 11.78      | 9,780   | ton         | \$ 1,132.00 | \$ 11,069,000  |
|  |                        | 2021            | 830                  | 12.65      | 10,500  | ton         | \$ 983.00   | \$ 10,322,000  |
|    | Garlic                 |                 |                      |            |         |             |             |                |
|  |                        | Fresh/Processed | 2022                 | 23,230     | 7.97    | 185,000     | ton         | \$ 1,902.00    |
|  |                        | 2021            | 22,610               | 8.27       | 187,000 | ton         | \$ 1,530.00 | \$ 286,110,000 |
|   | Head Lettuce           |                 |                      |            |         |             |             |                |
|  |                        | Naked           |                      |            | 4,600   | ton         |             |                |
|  |                        | Wrapped         |                      |            | 30,000  | ton         |             |                |
|  |                        | Bulk            |                      |            | 2,900   | ton         |             |                |
|  | SPRING<br>SEASON TOTAL | 2022            | 1,740                | 21.55      | 37,500  | ton         | \$ 641.00   | \$ 24,038,000  |
|  |                        | 2021            | 2,300                | 21.85      | 50,300  | ton         | \$ 406.00   | \$ 20,422,000  |
|  | Naked                  |                 |                      |            | 3,800   | ton         |             |                |
|  | Wrapped                |                 |                      |            | 21,600  | ton         |             |                |
|  | Bulk                   |                 |                      |            | 6,700   | ton         |             |                |
|  | FALL<br>SEASON TOTAL   | 2022            | 1,400                | 22.93      | 31,100  | ton         | \$ 1,362.00 | \$ 43,720,000  |
|  |                        | 2021            | 2,370                | 23.29      | 55,200  | ton         | \$ 889.00   | \$ 49,073,000  |
|  | HEAD LETTUCE<br>TOTALS | 2022            | 3,140                |            | 69,600  |             | \$          | \$ 67,758,000  |
|  |                        | 2021            | 4,670                |            | 106,000 |             | \$          | \$ 69,495,000  |

# 2022 CROP HIGHLIGHTS

## Vegetable Crops



| CROP | YEAR | HARVESTED<br>ACREAGE | PRODUCTION |       | PER<br>UNIT | VALUE       |       |
|------|------|----------------------|------------|-------|-------------|-------------|-------|
|      |      |                      | ACRE       | TOTAL |             | PER<br>UNIT | TOTAL |



### Melons

#### Conventional & Organic

|                         |      |        |       |         |     |           |                |
|-------------------------|------|--------|-------|---------|-----|-----------|----------------|
| Cantaloupe <sup>a</sup> | 2022 | 6,970  | 16.64 | 116,000 | ton | \$ 508.00 | \$ 58,928,000  |
|                         | 2021 | 9,640  | 14.73 | 142,000 | ton | \$ 430.00 | \$ 61,060,000  |
| Honeydew <sup>a</sup>   | 2022 | 3,100  | 18.89 | 58,600  | ton | \$ 661.00 | \$ 38,735,000  |
|                         | 2021 | 3,440  | 17.91 | 61,600  | ton | \$ 478.00 | \$ 29,445,000  |
| Mixed Melons            | 2022 | 2,520  | 13.73 | 34,600  | ton | \$ 655.00 | \$ 22,63,000   |
|                         | 2021 | 2,000  | 12.95 | 25,900  | ton | \$ 586.00 | \$ 15,177,000  |
| Watermelon              | 2022 | 1,930  | 27.13 | 52,400  | ton | \$ 281.00 | \$ 14,724,000  |
|                         | 2021 | 3,440  | 23.92 | 82,300  | ton | \$ 306.00 | \$ 25,184,000  |
| Melon Total             | 2022 | 14,520 |       |         |     |           | \$ 135,050,000 |
|                         | 2021 | 18,520 |       |         |     |           | \$ 130,866,000 |



### Onions

|                 |      |        |       |         |     |           |                |
|-----------------|------|--------|-------|---------|-----|-----------|----------------|
| Fresh/Processed | 2022 | 10,780 | 20.69 | 223,000 | ton | \$ 347.00 | \$ 77,381,000  |
|                 | 2021 | 15,620 | 17.54 | 274,000 | ton | \$ 412.00 | \$ 112,888,000 |



### Oriental Vegetables <sup>b</sup>

|      |       |  |        |     |  |               |
|------|-------|--|--------|-----|--|---------------|
| 2022 | 1,260 |  | 14,600 | ton |  | \$ 24,674,000 |
| 2021 | 1,380 |  | 15,250 | ton |  | \$ 24,047,000 |



### Pepper, Bell <sup>a</sup>

|      |       |       |        |     |            |               |
|------|-------|-------|--------|-----|------------|---------------|
| 2022 | 880   | 18.43 | 16,220 | ton | \$1,130.00 | \$ 18,329,000 |
| 2021 | 1,820 | 15.84 | 28,800 | ton | \$ 919.00  | \$ 26,467,000 |



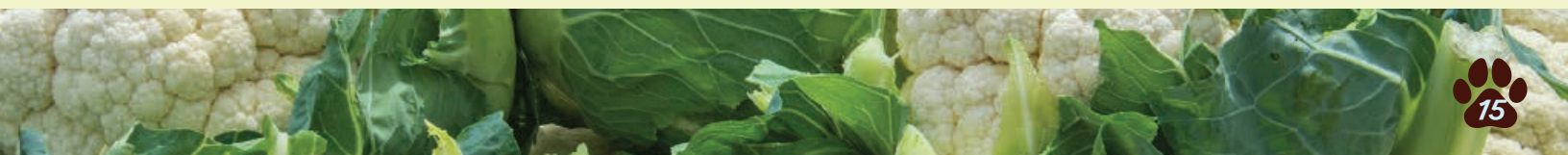
### Squash <sup>c</sup>

|      |       |       |        |     |           |              |
|------|-------|-------|--------|-----|-----------|--------------|
| 2022 | 1,040 | 10.89 | 11,300 | ton | \$ 788.00 | \$ 8,925,000 |
| 2021 | 1,100 | 7.88  | 8,670  | ton | \$ 660.00 | \$ 5,722,000 |



### Tomatoes

|           |      |        |       |           |     |          |                |
|-----------|------|--------|-------|-----------|-----|----------|----------------|
| Processed | 2022 | 56,300 | 49.15 | 2,767,000 | ton | \$ 89.00 | \$ 246,263,000 |
|           | 2021 | 62,700 | 45.92 | 2,879,000 | ton | \$ 91.00 | \$ 261,989,000 |



## 2022 CROP HIGHLIGHTS

### Vegetable Crops



| CROP                      | YEAR        | HARVESTED<br>ACREAGE | PRODUCTION |       |             | VALUE       |                         |
|---------------------------|-------------|----------------------|------------|-------|-------------|-------------|-------------------------|
|                           |             |                      | ACRE       | TOTAL | PER<br>UNIT | PER<br>UNIT | TOTAL                   |
| <i>Other</i> <sup>d</sup> | 2022        | 28,000               |            |       |             |             | \$ 275,421,000          |
|                           | 2021        | 20,613*              |            |       |             |             | \$ 258,046,000 *        |
| <b>TOTAL</b>              | <b>2022</b> | <b>143,440</b>       |            |       |             |             | <b>\$ 1,240,819,000</b> |
|                           | 2021        | 156,343              |            |       |             |             | \$ 1,219,120,000        |

a Includes fresh and processed

b Includes a choy, amaranth, bitter melon (fruit and leaf), bok choy, chayote (fruit and leaf), daikon, doan qua, gai choy, gailon, ginger (root & leaf), lambsquarter, lemon grass, lo bok, malabar, mizuna, methi, moqua, mora, moringa (fruit and leaf), nagaimo, napa cabbage, ong choy, opo, saluyote, sinqua, sour leaf, sugar cane, taro (root and leaf), tatsoi, tong ho, yam (root and leaves), yu choy; **ORGANIC**: lemon grass.

c Includes summer and winter varieties

d Includes arrugula, asparagus, basil, beans (shell & snap), beets, broccoli, brussel sprouts, cabbage, cactus (leaf), carrots, casava (root & leaf), cauliflower, celery, chamomile, chive, cilantro (fresh & processed), collards, corn (grain-proessed), cucumber, culantro, danelion green, dill, fennel, garlic (leaf), gourd, kale, kohlrabi, lavendar, leeks, lettuce-leaf, marjoram, mint, mushroom, mustard (fresh & leaf), nettle, okra, green onion (fresh & leaf), onion (leaf), oregano, parsley (dry & fresh), parsnip, peanut, peas, pennywort, chili pepper (fresh & processed), potato, pumpkin (fresh, processed & leaf), radish, rapini, rosemary, sage, savory, shallot, spinach, sunchokes, swiss chard, tarragon thyme, tinda, tindora, tomato (standard & cherry), tomatillo, tumeric, turnips; **ORGANIC**: corn (grain), honeydew melon, onion, processed tomatoes, market tomatoes, watermelon.

\* REVISED

## 2022 CROP HIGHLIGHTS

### Fruit and Nut Crops



| CROP                        | YEAR | HARVESTED<br>ACREAGE | PRODUCTION |         |             | VALUE       |                  |
|-----------------------------|------|----------------------|------------|---------|-------------|-------------|------------------|
|                             |      |                      | ACRE       | TOTAL   | PER<br>UNIT | PER<br>UNIT | TOTAL            |
| <i>Almonds</i> <sup>a</sup> | 2022 | 302,830              | 1.05       | 318,000 | ton         | \$3,148.00  | \$ 1,001,064,000 |
|                             | 2021 | 286,351              | 1.27       | 364,000 | ton         | \$3,736.00  | \$ 1,359,904,000 |



|                     |             |  |  |         |     |           |                        |
|---------------------|-------------|--|--|---------|-----|-----------|------------------------|
| <i>Almond Hulls</i> | 2022        |  |  | 542,000 | ton | \$ 193.00 | \$ 104,606,000         |
|                     | 2021        |  |  | 598,000 | ton | \$ 130.00 | \$ 77,740,000          |
| <b>ALMOND TOTAL</b> | <b>2022</b> |  |  |         |     |           | <b>\$1,105,670,000</b> |
|                     | 2021        |  |  |         |     |           | \$1,437,644,000        |



|                              |      |       |      |       |     |            |               |
|------------------------------|------|-------|------|-------|-----|------------|---------------|
| <i>Apricots</i> <sup>a</sup> | 2022 | 1,090 | 8.05 | 8,775 | ton | \$2,205.00 | \$ 19,349,000 |
|                              | 2021 | 1,315 | 5.49 | 7,220 | ton | \$1,168.00 | \$ 8,433,000  |



|                                 |      |       |      |       |     |            |               |
|---------------------------------|------|-------|------|-------|-----|------------|---------------|
| <i>Blueberries</i> <sup>a</sup> | 2022 | 1,600 | 3.57 | 5,710 | ton | \$6,624.00 | \$ 37,823,000 |
|                                 | 2021 | 1,587 | 4.00 | 6,348 | ton | \$5,803.00 | \$ 36,837,000 |



|                              |      |       |      |        |     |            |               |
|------------------------------|------|-------|------|--------|-----|------------|---------------|
| <i>Cherries</i> <sup>a</sup> | 2022 | 4,300 | 1.65 | 7,100  | ton | \$4,896.00 | \$ 34,762,000 |
|                              | 2021 | 4,461 | 3.29 | 14,700 | ton | \$3,689.00 | \$ 54,228,000 |

# 2022 CROP HIGHLIGHTS

## Fruit and Nut Crops



| CROP                                | YEAR | HARVESTED<br>ACREAGE | PRODUCTION |         |             | VALUE       |                |
|-------------------------------------|------|----------------------|------------|---------|-------------|-------------|----------------|
|                                     |      |                      | ACRE       | TOTAL   | PER<br>UNIT | PER<br>UNIT | TOTAL          |
| Citrus                              |      |                      |            |         |             |             |                |
| Lemons                              |      |                      |            |         |             |             |                |
| Fresh                               | 2022 | 5,340                | 14.85      | 79,300  | ton         | \$ 529.00   | \$ 41,950,000  |
|                                     | 2021 | 4,873                | 11.88      | 57,900  | ton         | \$ 646.00   | \$ 37,403,000  |
| Oranges                             |      |                      |            |         |             |             |                |
| NAVEL <sup>a</sup>                  | 2022 | 24,500               | 12.93      |         |             |             |                |
|                                     | 2021 | 28,020               | 16.08      |         |             |             |                |
| Fresh                               | 2022 |                      |            | 284,000 | ton         | \$ 604.00   | \$ 171,536,000 |
|                                     | 2021 |                      |            | 368,000 | ton         | \$ 539.00   | \$ 198,352,000 |
| Processed                           | 2022 |                      |            | 32,500  | ton         | \$ 112.00   | \$ 3,640,000   |
|                                     | 2021 |                      |            | 81,900  | ton         | \$ 88.00    | \$ 7,207,000   |
| VALENCIA <sup>a</sup>               | 2022 | 1,820                | 5.88       |         |             |             |                |
|                                     | 2021 | 2,314                | 11.99      |         |             |             |                |
| Fresh                               | 2022 |                      |            | 14,200  | ton         | \$ 732.00   | \$ 10,394,000  |
|                                     | 2021 |                      |            | 43,900  | ton         | \$ 731.00   | \$ 32,091,000  |
| Processed                           | 2022 |                      |            | 6,920   | ton         | \$ 49.00    | \$ 339,000     |
|                                     | 2021 |                      |            | 11,000  | ton         | \$ 80.00    | \$ 880,000     |
| ORANGE TOTAL                        | 2022 | 26,320               |            |         |             |             | \$ 185,909,000 |
|                                     | 2021 | 30,334               |            |         |             |             | \$ 238,530,000 |
| Mandarin/<br>Tangerine <sup>a</sup> |      |                      |            |         |             |             |                |
|                                     | 2022 | 24,400               | 9.39       | 229,000 | ton         | \$1,051.00  | \$ 240,679,000 |
|                                     | 2021 | 24,120               | 13.32      | 321,000 | ton         | \$ 691.00   | \$ 221,811,000 |
| Citrus, Other <sup>b</sup>          |      |                      |            |         |             |             |                |
| Fresh                               | 2022 | 2,042                | 14.69      | 30,000  | ton         | \$ 585.00   | \$ 17,550,000  |
|                                     | 2021 | 2,068                | 16.13      | 33,400  | ton         | \$ 611.00   | \$ 20,407,000  |
| CITRUS TOTAL                        | 2022 | 58,102               |            |         |             |             | \$ 486,088,000 |
|                                     | 2021 | 61,395               |            |         |             |             | \$ 518,151,000 |



# 2022 CROP HIGHLIGHTS

## Fruit and Nut Crops



| CROP                   | YEAR                   | HARVESTED<br>ACREAGE | PRODUCTION |                      |             | VALUE          |                  |
|------------------------|------------------------|----------------------|------------|----------------------|-------------|----------------|------------------|
|                        |                        |                      | ACRE       | TOTAL                | PER<br>UNIT | PER<br>UNIT    | TOTAL            |
| Grapes                 |                        |                      |            |                      |             |                |                  |
| Raisin                 | 2022                   | 82,622               | 10.60      |                      |             |                |                  |
|                        | VARIETIES <sup>a</sup> | 2021                 | 85,299     | 10.66                |             |                |                  |
|                        | Canned                 | 2022                 |            | 420                  | ton         | \$ 704.00      | \$ 296,000       |
|                        |                        | 2021                 |            | 1,350                | ton         | \$ 604.00      | \$ 815,000       |
|                        | Crushed                | 2022                 |            | 76,575               | ton         | \$ 310.00      | \$ 23,738,000    |
|                        |                        | 2021                 |            | 97,400               | ton         | \$ 292.00      | \$ 28,441,000    |
|                        | Dried                  | 2022                 |            | 169,000 <sup>c</sup> | ton         | \$1,736.00     | \$ 293,384,000   |
|                        |                        | 2021                 |            | 169,000 <sup>c</sup> | ton         | \$2,200.00     | \$ 371,800,000   |
|                        | Fresh                  | 2022                 |            | 4,680                | ton         | \$1,620.00     | \$ 7,582,000     |
|                        |                        | 2021                 |            | 16,400               | ton         | \$2,000.00     | \$ 32,800,000    |
| Table                  |                        |                      |            |                      |             |                |                  |
| VARIETIES <sup>a</sup> | 2022                   | 31,840               | 10.46      |                      |             |                |                  |
|                        | 2021                   | 31,771               | 10.25      |                      |             |                |                  |
|                        | Crushed                | 2022                 |            | 19,100               | ton         | \$ 273.00      | \$ 5,214,000     |
|                        |                        | 2021                 |            | 6,638                | ton         | \$ 212.00      | \$ 1,407,000     |
|                        | Fresh                  | 2022                 |            | 314,000              | ton         | \$2,074.00     | \$ 651,236,000   |
|                        |                        | 2021                 |            | 319,000              | ton         | \$2,071.00     | \$ 660,649,000   |
| Wine                   |                        |                      |            |                      |             |                |                  |
| VARIETIES <sup>a</sup> | 2022                   | 54,740               | 12.86      |                      |             |                |                  |
|                        | 2021                   | 55,510               | 12.83      |                      |             |                |                  |
| Crushed                | 2022                   |                      | 701,000    | ton                  | \$ 356.00   | \$ 249,556,000 |                  |
|                        | 2021                   |                      | 710,000    | ton                  | \$ 333.00   | \$ 236,430,000 |                  |
| Juice                  | 2022                   |                      | 2,570      | ton                  | \$1,414.00  | \$ 3,634,000   |                  |
|                        | 2021                   |                      | 2,420      | ton                  | \$ 1,306.00 | \$ 3,161,000   |                  |
| GRAPE TOTAL            | 2022                   | 169,162              |            |                      |             |                | \$ 1,234,640,000 |
|                        | 2021                   | 172,580              |            |                      |             |                | \$ 1,335,503,000 |

# 2022 CROP HIGHLIGHTS

## Fruit and Nut Crops



|  | CROP  | YEAR        | HARVESTED<br>ACREAGE | PRODUCTION |         |             | VALUE       |                       |
|--|---|-------------|----------------------|------------|---------|-------------|-------------|-----------------------|
|  |   |             |                      | ACRE       | TOTAL   | PER<br>UNIT | PER<br>UNIT | TOTAL                 |
|    | <b>Nectarines</b> <sup>a</sup>                                | 2022        | 11,018               | 9.26       | 102,000 | ton         | \$2,106.00  | \$ 214,812,000        |
|  |   | 2021        | 10,865               | 9.30       | 101,000 | ton         | \$1,489.00  | \$ 150,389,000        |
|    | <b>Peaches</b> <sup>a</sup>                                   |             |                      |            |         |             |             |                       |
|  | Cling (processed)   | 2022        | 1,720                | 12.91      | 22,200  | ton         | \$ 603.00   | \$ 13,387,000         |
|  |   | 2021        | 1,966                | 15.52      | 30,500  | ton         | \$ 522.00   | \$ 15,921,000         |
|  | Freestone (fresh)   | 2022        | 15,600               | 11.20      | 175,000 | ton         | \$1,915.00  | \$ 335,125,000        |
|  |   | 2021        | 16,070               | 9.39       | 151,000 | ton         | \$1,380.00  | \$ 208,380,000        |
|  | <b>PEACHES TOTAL</b>  | <b>2022</b> | <b>17,320</b>        |            |         |             |             | <b>\$ 348,512,000</b> |
|  |   | 2021        | 18,036               |            |         |             |             | \$ 224,301,000        |
|  | <b>Pears, All</b><br><i>Asian &amp; European</i> <sup>d</sup> | 2022        | 450                  | 16.13      | 7,260   | ton         | \$2,450.00  | \$ 17,787,000         |
|  |   | 2021        | 747                  | 17.54      | 13,100  | ton         | \$1,795.00* | \$ 23,515,000*        |
|  | <b>Persimmons</b> <sup>a</sup>                                | 2022        | 1,050                | 7.14       | 7,450   | ton         | \$2,551.00  | \$ 19,005,000         |
|  |   | 2021        | 1,057                | 7.73       | 8,170   | ton         | \$1,738.00  | \$ 14,199,000         |
|  | <b>Pistachios</b> <sup>a</sup>                                | 2022        | 144,980              | 1.28       | 186,000 | ton         | \$3,705.00  | \$ 689,130,000        |
|  |   | 2021        | 132,488              | 1.48       | 196,000 | ton         | \$3,684.00  | \$ 722,064,000        |
|  | <b>Plums</b> <sup>a</sup>                                     | 2022        | 10,130               | 7.01       | 71,000  | ton         | \$ 2,064.00 | \$ 146,544,000        |
|  |   | 2021        | 10,367               | 7.70       | 79,800  | ton         | \$ 1,537.00 | \$ 122,653,000        |
|  | <b>Plums, Dried</b>   | 2022        | 1,320                | 1.92       | 2,530   | ton         | \$2,409.00  | \$ 6,095,000          |
|  |   | 2021        | 1,353                | 1.53       | 2,070   | ton         | \$1,962.00  | \$ 4,061,000          |



# 2022 CROP HIGHLIGHTS

## Fruit and Nut Crops



### Pomegranates<sup>a</sup>

| CROP | YEAR | HARVESTED ACREAGE | ACRE | TOTAL  | PER UNIT | VALUE       |
|------|------|-------------------|------|--------|----------|-------------|
|      | 2022 | 4,600             | 2.41 | 11,100 | ton      | \$ 2,032.00 |
|      | 2021 | 4,432             | 7.27 | 32,200 | ton      | \$ 848.00   |



### Walnuts<sup>a</sup>

|  |      |        |      |        |  |            |
|--|------|--------|------|--------|--|------------|
|  | 2022 | 10,860 | 1.75 | 19,000 |  | \$ 968.00  |
|  | 2021 | 10,974 | 1.81 | 19,900 |  | \$1,637.00 |



### Other<sup>d</sup>

|  |      |         |  |  |  |                 |
|--|------|---------|--|--|--|-----------------|
|  | 2022 | 15,600  |  |  |  | \$ 120,868,000  |
|  | 2021 | 8,440 * |  |  |  | \$ 81,989,000 * |

### TOTAL

|  |      |           |  |  |  |                    |
|--|------|-----------|--|--|--|--------------------|
|  | 2021 | 754,410   |  |  |  | \$ 4,522,032,000   |
|  | 2020 | 727,570 * |  |  |  | \$ 4,793,849,000 * |

- a Additional acreage that is included in other fruit and nut crops: 162 acres apricot (dried), 76 acres cherry (juice), 58 acres Citrus other (processed), 20 acres grape raisin variety (juice), 287 acres grape table variety (dried), 912 acres peaches freestone (processed), 193 acres peaches cling (fresh); ORGANIC: 6,781 acres almonds, 47 acres blueberries, 50 acres table grapes (fresh), 93 acres mandarins, 363 acres nectarines, 70 acres navel oranges, 402 acres peaches freestone (fresh & processed), 90 acres peaches cling (fresh & processed), 1,543 acres pistachios, 55 acres plums (fresh), 62 acres pomegranates, 191 acres walnuts
- b Includes citron, lime, grapefruit, pomelo and tangelo
- c Tonage is reported as dried tons
- d Includes both conventional & organic.
- e Includes almonds (shells, inedibles), apples (fresh), apricots (dried), avocado, blackberries, boysenberries, cherries, citrus other (processed), grape raisin variety (juice), grape table variety (dried), grape (by-products), guava, jojoba, jujubes, kiwi, kumquat, lemons (processed), mandarins (processed), mulberry, olives, peaches (freestone-processed), peach cling (fresh), pecans, pluots, quince, raspberries and strawberries; ORGANIC: almonds, blueberries, figs, grape table (fresh), mandarins, nectarines, orange navel, peaches freestone (fresh, processed), peaches cling (fresh, processed), plums (fresh, dried) pomegranates, walnuts
- \* REVISED

# 2022 CROP HIGHLIGHTS

## Nursery Crops



### Herbaceous Ornamentals<sup>a</sup>

| CROP | PER YEAR | QUANTITY  | UNIT | VALUE        |
|------|----------|-----------|------|--------------|
|      | 2022     | 958,000   | b    | \$ 4,397,000 |
|      | 2021     | 1,244,000 | b    | \$ 6,324,000 |



### Ornamental Trees And Shrubs

|  |      |           |        |               |
|--|------|-----------|--------|---------------|
|  | 2022 | 1,455,000 | plants | \$ 14,926,000 |
|  | 2021 | 222,000   | plants | \$ 3,967,000  |



### Other<sup>c</sup>

|  |      |             |       |               |
|--|------|-------------|-------|---------------|
|  | 2022 | 378,922,000 | units | \$ 30,890,000 |
|  | 2021 | 294,236,000 | units | \$ 37,650,000 |

### TOTAL

|  |      |  |  |               |
|--|------|--|--|---------------|
|  | 2022 |  |  | \$ 50,213,000 |
|  | 2021 |  |  | \$ 47,491,000 |

- a Includes potted plants, bedding plants, decorative plants, flats, annuals, succulents, perennials and grasses
- b Includes flats, dozens, containers, seedlings and single plants and trees
- c Includes bareroot fruit trees, citrus (budwood and trees), grape (rootings and cuttings), trees-restoration stock (seedlings), turf (in square feet), and vegetable transplants

# 2022 CROP HIGHLIGHTS

## Livestock and Poultry



|                   |      | PRODUCTION  |                  |                        | VALUE       |              |                |
|-------------------|------|-------------|------------------|------------------------|-------------|--------------|----------------|
| ITEM              | YEAR | NO. OF HEAD | TOTAL LIVEWEIGHT | UNIT                   | PER UNIT    | TOTAL        |                |
| Cattle and Calves |      |             |                  |                        |             |              |                |
| Beef              |      |             |                  |                        |             |              |                |
| Breeding Stock    |      |             |                  |                        |             |              |                |
| COMMON            | 2022 | 1,340       |                  | head                   | \$ 1,300.00 | \$ 1,742,000 |                |
|                   | 2021 | 1,300       |                  | head                   | \$ 1,447.00 | \$ 1,881,000 |                |
| REGISTERED        | 2022 | 340         |                  | head                   | \$ 6,020.00 | \$ 2,047,000 |                |
|                   | 2021 | 330         |                  | head                   | \$ 5,326.00 | \$ 1,758,000 |                |
| Feeders           |      | 2022        | 28,800           | 171,000                | cwt         | \$ 138.00    | \$ 23,598,000  |
|                   |      | 2021        | 28,900           | 178,000                | cwt         | \$ 122.00    | \$ 21,716,000  |
| Calves            |      | 2022        | 29,800           | 89,300                 | cwt         | \$ 173.52    | \$ 15,495,000  |
|                   |      | 2021        | 28,900           | 86,600                 | cwt         | \$ 156.94    | \$ 13,591,000  |
| Slaughter Stock   |      |             |                  |                        |             |              |                |
|                   |      | 2022        | 310,000          | 1,636,000 <sup>a</sup> | cwt         | \$ 126.12    | \$ 206,332,000 |
|                   |      | 2021        | 276,000          | 1,484,000 <sup>a</sup> | cwt         | \$ 125.85    | \$ 186,761,000 |



### Dairy

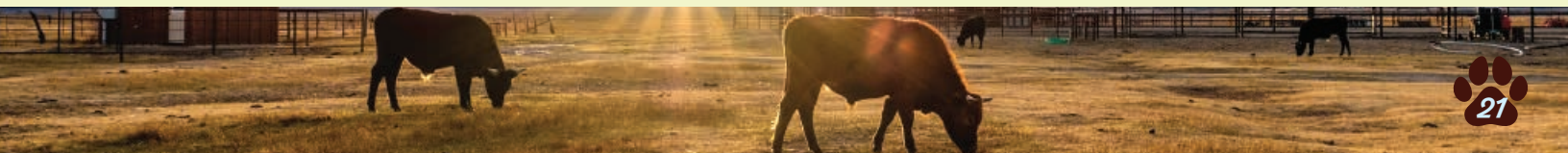
#### Breeding Stock

|                   |      |        |         |      |             |                |
|-------------------|------|--------|---------|------|-------------|----------------|
|                   | 2022 | 99,100 |         | head | \$ 1,588.00 | \$ 157,371,000 |
|                   | 2021 | 99,600 |         | head | \$ 1,193.00 | \$ 118,823,000 |
| <b>Feeders</b>    | 2022 | 50,900 | 301,000 | cwt  | \$ 70.43    | \$ 21,199,000  |
|                   | 2021 | 51,100 | 297,000 | cwt  | \$ 70.43    | \$ 20,918,000  |
| <b>Calves</b>     | 2022 | 55,400 | 166,000 | cwt  | \$ 170.00   | \$ 28,220,000  |
|                   | 2021 | 55,400 | 166,000 | cwt  | \$ 170.00   | \$ 28,220,000  |
| <b>Cull Stock</b> | 2022 | 29,400 | 382,000 | cwt  | \$ 85.50    | \$ 32,661,000  |
|                   | 2021 | 29,600 | 384,000 | cwt  | \$ 62.27    | \$ 23,912,000  |

### CATTLE AND CALVES

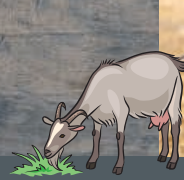
#### TOTAL

|      |                |
|------|----------------|
| 2022 | \$ 488,655,000 |
| 2021 | \$ 417,580,000 |



# 2022 CROP HIGHLIGHTS

## Livestock and Poultry



### Hogs and Pigs

#### Market Pigs & Slaughter Stock

| YEAR | NO. OF HEAD | TOTAL LIVEWEIGHT | UNIT | PER UNIT  | VALUE TOTAL   |
|------|-------------|------------------|------|-----------|---------------|
| 2022 | 33,800      | 83,700           | cwt  | \$ 101.00 | \$ 8,454,000  |
| 2021 | 41,200      | 103,000          | cwt  | \$ 115.89 | \$ 11,937,000 |



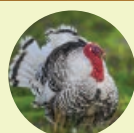
### Sheep and Lambs

#### Slaughter Stock Lambs

| YEAR | NO. OF HEAD | TOTAL LIVEWEIGHT | UNIT | PER UNIT  | VALUE TOTAL   |
|------|-------------|------------------|------|-----------|---------------|
| 2022 | 71,700      | 66,000           | cwt  | \$ 306.00 | \$ 20,196,000 |
| 2021 | 69,200      | 88,500           | cwt  | \$ 237.00 | \$ 20,975,000 |

#### Sheep

| YEAR | NO. OF HEAD | TOTAL LIVEWEIGHT | UNIT | PER UNIT  | VALUE TOTAL  |
|------|-------------|------------------|------|-----------|--------------|
| 2022 | 8,400       | 13,000           | cwt  | \$ 103.54 | \$ 1,346,000 |
| 2021 | 8,100       | 13,000           | cwt  | \$ 140.00 | \$ 1,820,000 |



### Poultry and Misc. Other<sup>b</sup>

| YEAR | VALUE TOTAL    |
|------|----------------|
| 2022 | \$ 539,595,000 |
| 2021 | \$ 538,684,000 |

#### TOTAL

| YEAR | VALUE TOTAL     |
|------|-----------------|
| 2022 | \$1,058,256,000 |
| 2021 | \$ 990,996,000  |

a Net gain

b Includes chickens, ducks, fish, gamebirds (pheasant, pigeon and quail); geese, goats, insects (beneficial); and turkeys

# 2022 CROP HIGHLIGHTS

## Livestock and Poultry Products



### Manure<sup>a</sup>

| YEAR | PRODUCTION | UNIT | PER UNIT | VALUE TOTAL   |
|------|------------|------|----------|---------------|
| 2022 | 1,733,000  | ton  | 7.84     | \$ 13,587,000 |
| 2021 | 1,848,000  | ton  | 8.34     | \$ 15,412,000 |



### Milk<sup>b</sup>

| YEAR | PRODUCTION | UNIT | PER UNIT | VALUE TOTAL    |
|------|------------|------|----------|----------------|
| 2021 | 24,977,000 | cwt  | 26.63    | \$ 655,138,000 |
| 2021 | 24,951,000 | cwt  | 19.42    | \$ 484,548,000 |



### Other<sup>c</sup>

| YEAR | VALUE TOTAL |
|------|-------------|
| 2022 | \$ 724,000  |
| 2021 | \$ 568,000  |

#### TOTAL

| YEAR | VALUE TOTAL    |
|------|----------------|
| 2022 | \$ 669,449,000 |
| 2021 | \$ 500,528,000 |

a Includes cow, chicken, turkey and duck manure

b Includes cow milk (conventional and organic) and goat milk

c Includes commercial chicken eggs, and wool

# 2022 CROP HIGHLIGHTS

## Apiary Products and Pollination Services



### Apiary Products

#### Honey

#### Beeswax

### Pollination<sup>a</sup>

#### Seed<sup>b</sup>

#### Trees, Fruit and Nut<sup>c</sup>

#### Melon<sup>d</sup>

#### Vegetable<sup>e</sup>

### TOTAL

| ITEM                                 | YEAR | PRODUCTION TOTAL | UNIT | VALUE    |                |
|--------------------------------------|------|------------------|------|----------|----------------|
|                                      |      |                  |      | PER UNIT | TOTAL          |
| Honey                                | 2022 | 8,859,000        | lb   | \$ 2.92  | \$ 25,868,000  |
|                                      | 2021 | 5,192,000        | lb   | \$ 3.66  | \$ 19,003,000  |
| Beeswax                              | 2022 | 491,000          | lb   | \$ 5.28  | \$ 2,592,000   |
|                                      | 2021 | 410,000          | lb   | \$ 4.05  | \$ 1,661,000   |
| Seed <sup>b</sup>                    | 2022 |                  |      |          | \$ 315,000     |
|                                      | 2021 |                  |      |          | \$ 282,000     |
| Trees, Fruit<br>and Nut <sup>c</sup> | 2022 |                  |      |          | \$ 120,785,000 |
|                                      | 2021 |                  |      |          | \$ 111,043,000 |
| Melon <sup>d</sup>                   | 2022 |                  |      |          | \$ 1,278,000   |
|                                      | 2021 |                  |      |          | \$ 1,393,000   |
| Vegetable <sup>e</sup>               | 2022 |                  |      |          | \$ 155,000     |
|                                      | 2021 |                  |      |          | \$ 203,000     |
| TOTAL                                | 2022 |                  |      |          | \$ 150,993,000 |
|                                      | 2021 |                  |      |          | \$ 133,585,000 |

- a Reflects value of pollination by all bee colonies located in Fresno County for pollination services during 2022
- b Alfalfa, lettuce, onion, and miscellaneous vegetable crops
- c Almond, apple, blackberry, blueberry, cherry, kiwifruit, pear, plum, pluot, pomegranate and prune
- d Cantaloupe, honeydew, watermelons and mixed melons
- e Bell pepper, coriander (cilantro), cucumber, chili pepper, pumpkin, and squash

# 2022 CROP HIGHLIGHTS

## Industrial Crops



### CROP

#### TIMBER<sup>a</sup>

#### OTHER<sup>b</sup>

### TOTAL

| YEAR | PRODUCTION | UNIT       | VALUE        |
|------|------------|------------|--------------|
| 2022 | 13,870,000 | board feet | \$ 575,000   |
| 2021 | 30,532,000 | board feet | \$ 1,219,000 |
| 2022 |            |            | \$ 1,365,000 |
| 2021 |            |            | \$ 4,386,000 |
| 2022 |            |            | \$ 1,940,000 |
| 2021 |            |            | \$ 5,605,000 |

- a Includes government and non-government properties
- b Includes compost, ground cover, mulch, pomace, wood fines and Christmas trees

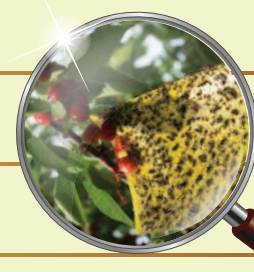
# 2021 CROP HIGHLIGHTS

## Sustainable Agriculture



| PEST  | 2022 BIOLOGICAL CONTROL ACTIVITIES<br>B.C. AGENT/MECHANISM   | ACTIVITY  |
|---|--|---|
| Glassy-winged sharpshooter,<br><i>Homalodisca vitripennis</i> | <ul style="list-style-type: none"> <li>- <i>Cosmocomoidea ashmeadi</i></li> <li>- <i>Cosmocomoidea morgani</i></li> <li>- <i>Cosmocomoidea morilli</i></li> <li>- <i>Ufens</i> spp.</li> </ul> | CDFA released parasitoids species and monitored for evidence of GWSS egg parasitism |

| INSECT  | 2022 DETECTION ACTIVITIES<br>TRAPS DEPLOYED | RESULTS   |
|---|---|---|
| European Grapevine Moth,<br><i>Lobesia botrana</i>                    | 2,401                                       | None captured   |
| Glassy-winged sharpshooter,<br><i>Homalodisca vitripennis</i>         | 3,023                                       | Multiple residential/commercial captures (properties treated) |
| Asian citrus psyllid,<br><i>Diaphorina citri</i>                      | 2,776                                       | None captured   |
| Mediterranean fruit fly,<br><i>Ceratitis capitata</i>                 | 707   | None captured   |
| Spongy moth (formerly known as Gypsy Moth)<br><i>Lymantria dispar</i> | 455   | None captured   |
| Oriental fruit fly,<br><i>Bactrocera dorsalis</i>                     | 707   | None captured   |
| Melon fruit fly,<br><i>Bactrocera cucurbitae</i>                      | 370   | None captured   |
| Japanese beetle,<br><i>Popillia japonica</i>                          | 345   | None captured   |
| Apple maggot,<br><i>Rhagoletis pomonella</i>                          | 14  | None captured   |
| Western cherry fruit fly,<br><i>Rhagoletis indifferens</i>            | 39  | None captured   |
| Red Imported fire ant<br><i>Solenopsis invicta</i>                    | 789   | None captured   |



| PEST                       | 2022 BIOLOGICAL CONTROL ACTIVITIES<br>ACTIVITY | RESULTS                  |
|----------------------------|--|--------------------------|
| Glassy-winged sharpshooter | 3,841 - Bulk Citrus Inspections                | 4 - Finds in bulk citrus |

### 2022 PEST ERADICATION / MANAGEMENT ACTIVITIES

#### Eradication

Pink Bollworm

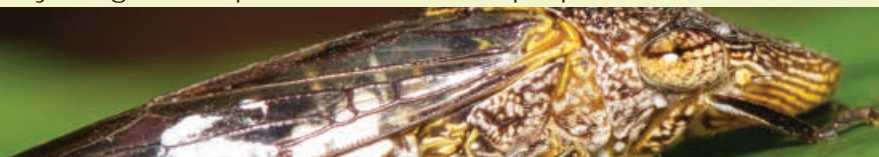
34,290 cotton acres

0 Plowdown non-compliance

#### Management

Glassy-winged sharpshooter

0 properties treated



# FUN FACTS ABOUT:

## Smells Like

# OUR SNIFFER CREW!

### Kaitlyn & Brodee

**Free time:** Brodee loves to chase all the pesky cats and birds he sees on walks.

**Favorite food:** Brodee will eat ANYTHING, but Kaitlyn says he gets really excited about his Kong filled with peanut butter and loves to crunch on ice cubes.

**Favorite toy:** Brodee loves his Wubba and any stuffed animal nearby. He also loves to shred cardboard boxes before they get recycled.

**Favorite place to play:** Brodee loves to swim like a fish! He will do laps at the dog park pool and often refuses to come out unless bribed with treats. He also loves chasing dragonflies around the pool too.

**Nicknames:** Bro-bro & Broseff

### TEAM SPIRIT!

### Amanda & Rufus

**Performance:** Instead of receiving treats when Rufus alerts on a package, he receives kibble. This reinforces him performing a task for his meal each day and also ensures his handler keeps a close eye on his diet and weight to keep him in top shape!

**Free time:** Rufus loves playing fetch, chewing on antlers, and going on super long walks.

**Favorite food:** Doggy beef jerky

**Favorite toy:** Chuck-it ball and his squeaky pizza

**Favorite place to play:** Rufus loves to go to the pool at the dog park; when Amanda throws his ball in the water, Rufus makes quite the tidal wave going after it!

**Nicknames:** Rufus the Dufus & Ru-ru





# TO ALL OUR AG TEAM!

## TEAM SPIRIT!

From all the folks and furry friends at the  
Fresno County Department of Agriculture,  
we would like to extend a big, heartfelt

 *Thank You!* 

To you and all of our growers, associated industries,  
and especially to those that responded  
to our Crop Report survey.

## THE 2022 CROP REPORT

would not be possible  
without all of your hard work  
and the data you kindly share with our crew.

*You are Top Dog with us!*

