

***FRESNO COUNTY PROBATION
DEPARTMENT ANNUAL REPORT
2014 - 2015***



TABLE OF CONTENTS

I. Introduction

<i>Probation Administration</i>	1
<i>Court Administration</i>	2
<i>Board of Supervisors</i>	3
<i>Oversight Committee</i>	4
<i>Mission Statement</i>	5

II. Supervision

<i>Continuum of Sanctions - Adult Services</i>	1
<i>Field/Bank Unit</i>	2
<i>Deferred Entry of Judgment (DEJ)</i>	3
<i>Alternative Sentencing Sanctions</i>	4-6
<i>Adult Investigations</i>	7
<i>Adult Field Services</i>	8-10
<i>DNA</i>	11
<i>Post Conviction Drug Court</i>	12
<i>Proposition 36</i>	13
<i>Drug Testing Services</i>	14
<i>Domestic Violence/Sex Offender/Child Abuse/Elder Abuse</i>	15-17
<i>Behavioral Health Court</i>	18
<i>Day Reporting Center</i>	19
<i>AB 109</i>	20-25
<i>Continuum of Sanctions - Juvenile</i>	26

<i>Juvenile Intake</i>	27-28
<i>Juvenile Investigations</i>	29
<i>Juvenile Drug/Substance Abuse (SAU)</i>	30-31
<i>Campus and Juvenile Supervision</i>	32-33
<i>Electronic Monitoring</i>	34-35
<i>Placement</i>	36-37
<i>Behavioral Health Court</i>	38-39

III. Prevention and Intervention

<i>Truancy Intervention Prevention (TIP)</i>	1
<i>Juvenile Justice Campus</i>	2-3
<i>Commitment Program</i>	4-7

IV. Victim Advocacy

<i>James Rowland Crime Victim Assistance Center</i>	1-2
---	-----

V. Resource Management

<i>Finance and Support</i>	1-2
----------------------------------	-----

VI. Departmental Organization Charts

<i>Probation Administration Division</i>	1
<i>Finance and Support</i>	2
<i>Adult Services</i>	3-4
<i>Juvenile Services</i>	5
<i>Juvenile Justice Campus</i>	6-7

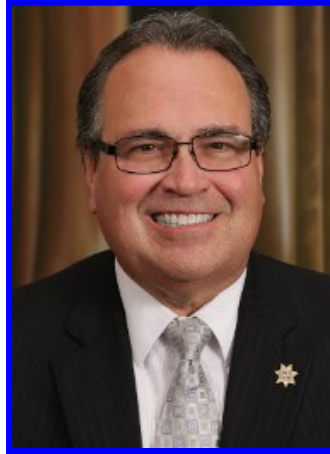


INTRODUCTION



PROBATION ADMINISTRATION

Chief Probation Officer



Rick Chavez

EXECUTIVE COUNCIL

The Probation Department's Executive Council is the governing body of the Probation Department. The Executive Council members include the Probation Department's Chief Probation Officer, Division Directors, Senior Systems and Procedure Analyst and the Business Manager, they are the Probation Department key decision makers.



COURT ADMINISTRATION

California Superior Court - Fresno

The Honorable Jonathan B. Conklin

2015 Presiding Judge



The Honorable Jonathan B. Conklin

2014 Presiding Judge

Will serve the community and enhance public trust and confidence in the administration of justice by the impartial and timely resolution of disputes, ensuring compliance with court directive, and by fostering a vital court-community relationship.

Juvenile Court - Delinquency Division

The Honorable Gary Orozco

Presiding Judge



FRESNO COUNTY BOARD OF SUPERVISORS



Supervisor Andreas Borgeas, *District 2*

Supervisor Debbie Poochigian, *District 5*

Supervisor Buddy Mendes , *District 4 (Chairman)*

Supervisor Brian Pacheco, *District 1 (Vice Chairman)*

Supervisor Henry Perea, *District 3*

OVERSIGHT COMMITTEE

Vonda Epperson (Chairperson)

Rory Smith

Kay Frauenholtz

Marilyn Watts

Lori Curtiss

Barbara Schulte (Vice Chairperson)

Rowena Hustedde

Linda Reed

Judy Bufkin

Ed Avila

Nancy Gray

Ron Climer

Tamara Beard

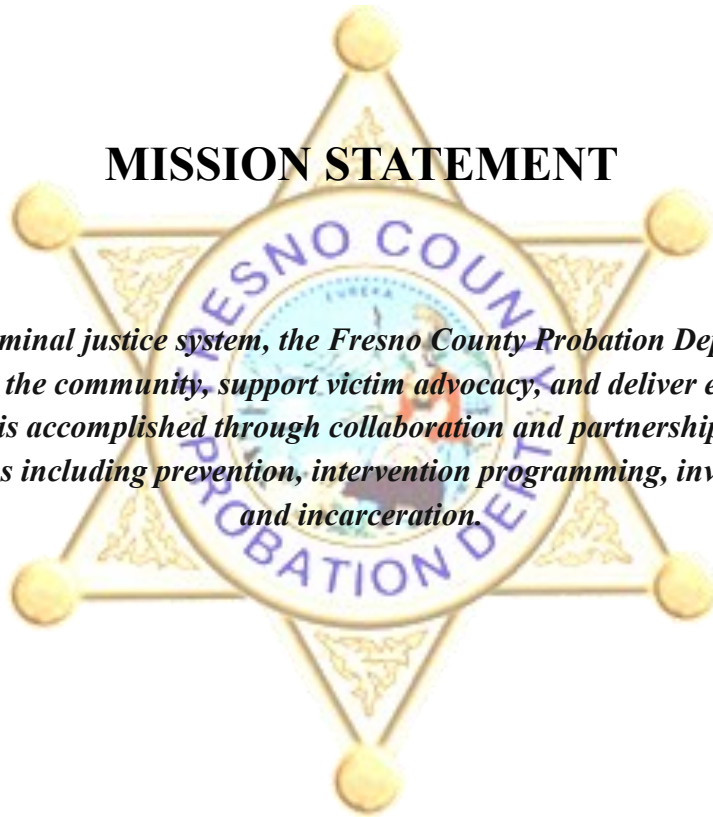


Blossom Trail - Fresno County

PROBATION DEPARTMENT

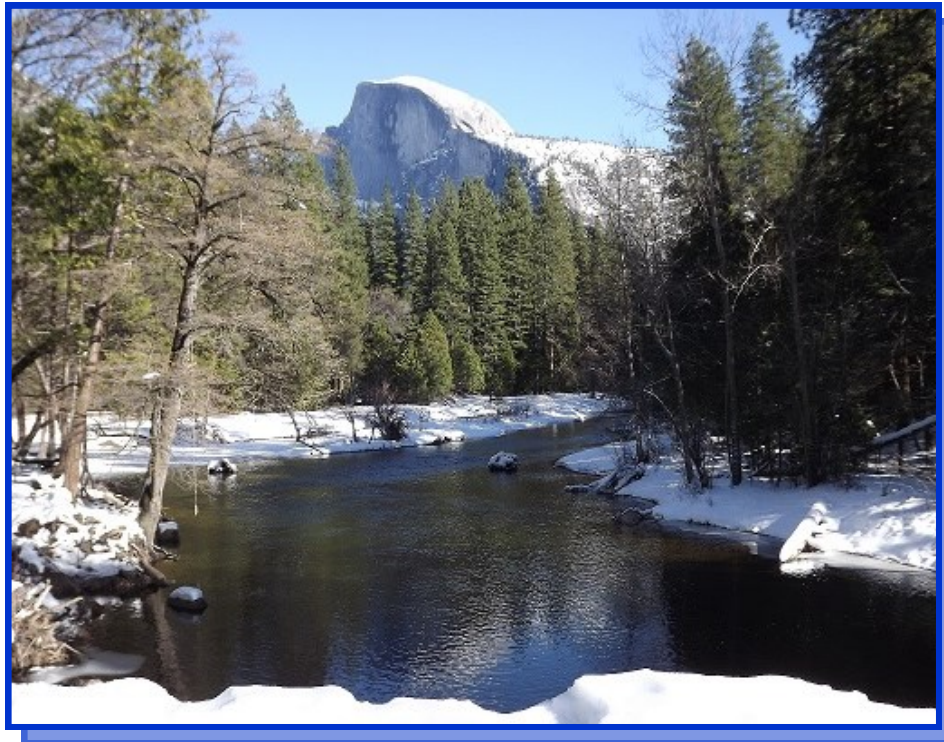
MISSION STATEMENT

As a member of the criminal justice system, the Fresno County Probation Department's mission is to provide protection for the community, support victim advocacy, and deliver essential services to the courts. The mission is accomplished through collaboration and partnerships which encompass a continuum of sanctions including prevention, intervention programming, investigation, supervision, and incarceration.



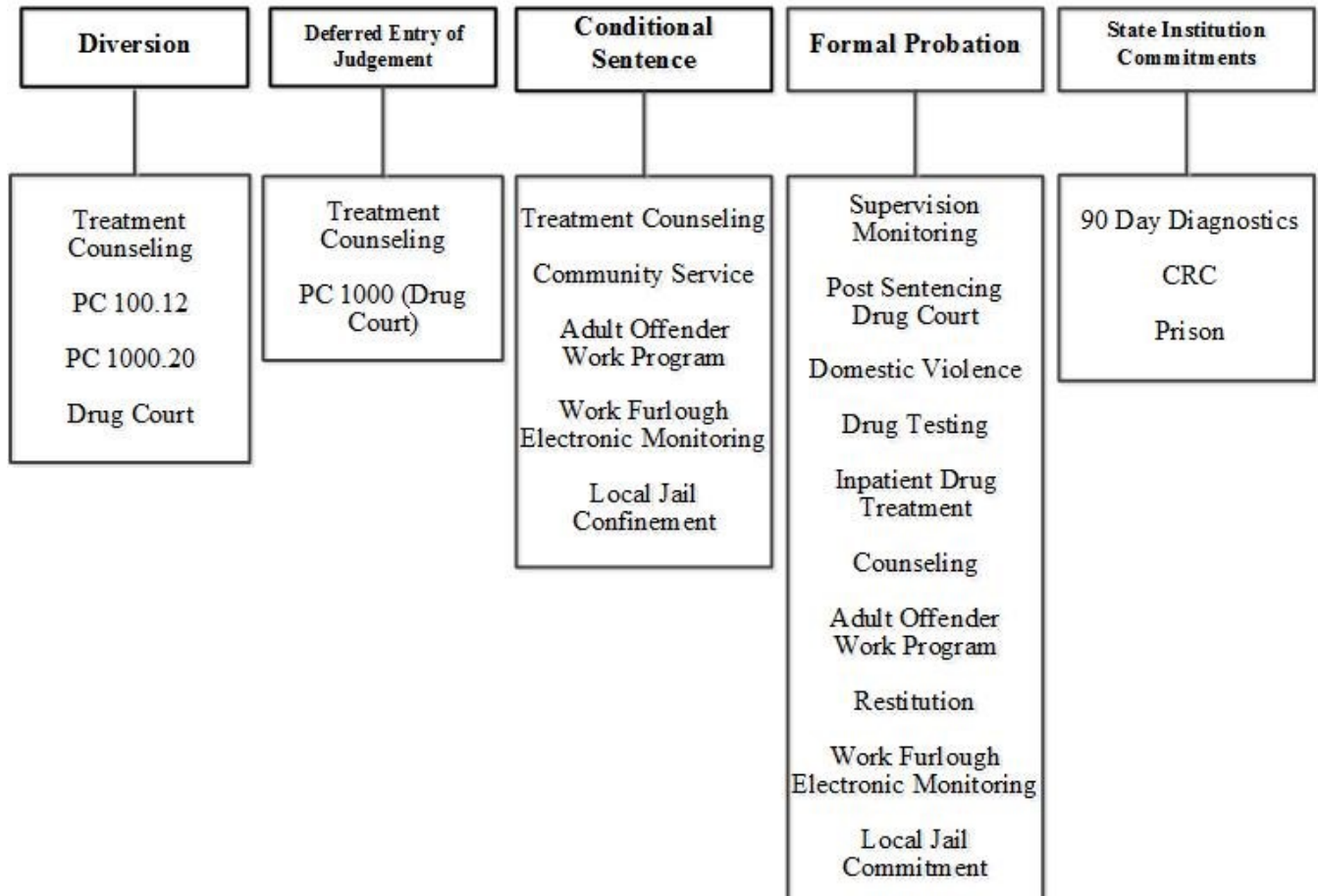


SUPERVISION



Merced River/Half Dome - Yosemite (Photo by Dolly Quan)

CONTINUUM OF SANCTIONS



Sanctions shown are (from left to right) least restrictive to most serious.



FIELD/BANK UNIT

Adult Field Special Services is an armed unit of five Probation officers, and three Probation Technicians providing supervision for low to moderate risk level offenders. The unit is responsible for numerous functions in order to enforce compliance with Court-ordered probation conditions. These functions include providing written and verbal reports to the Superior Court, acting as a liaison between treatment programs and the court, referring offenders to appropriate treatment programs, drug and alcohol testing, participating in field operations, and arresting probation violators when necessary. Offenders supervised by the unit are subject to state of the art evidence based supervision principles insuring the length and intensity of supervision is commensurate with the level of risk posed to the community.

Felony High Risk: Supervision of low to high risk offenders. These offenders are on felony probation and have a criminal history that is not easily categorized as fitting within the caseloads in the special services unit. Supervision of this population includes an evaluation of risk to reoffend. Appropriate referrals are made to cognitive behavioral modification therapy, drug treatment, and job skills assistance.

PC 1203.9 Transfers: Supervision of offenders who have been transferred to the Fresno County Probation department's jurisdiction from other California counties and States. These offenders are evaluated for suitability for supervision and verification of residence within Fresno County for approval of transfer to Fresno County Probation Supervision. Once accepted, the offender will be screened for placement with specialized supervision as needed and per evidenced based practices.





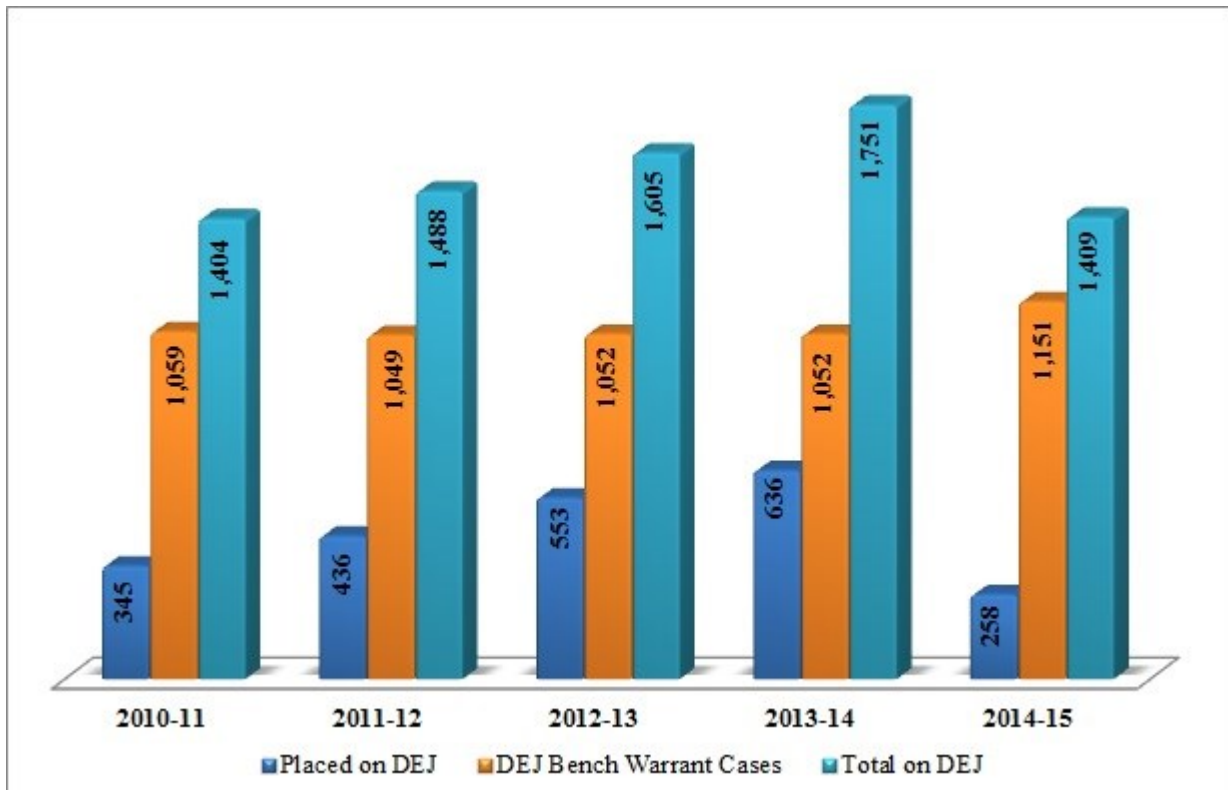
DEFERRED ENTRY OF JUDGMENT

The Deferred Entry of Judgment Adult Drug Court Program places appropriate candidates, on a minimum 18 months supervision pursuant to PC 1000. The program includes drug testing, Drug Court reviews, and participation in approved treatment programs. Probation officers supervising this diversion program provide orientation to defendants, case managements and assistance to the Court in residential treatment placements and program ceremonies. These officers also supervise the PC1001.20 cases.

Deferred Entry of Judgment Drug Court Statistics

Placed on DEJ	258
DEJ Bench Warrant Cases	1,151
Total on DEJ as of June 30, 2015	1,409

Chart Representing Past Five Fiscal Years





ALTERNATIVE SENTENCING SANCTIONS

A.O.W.P.

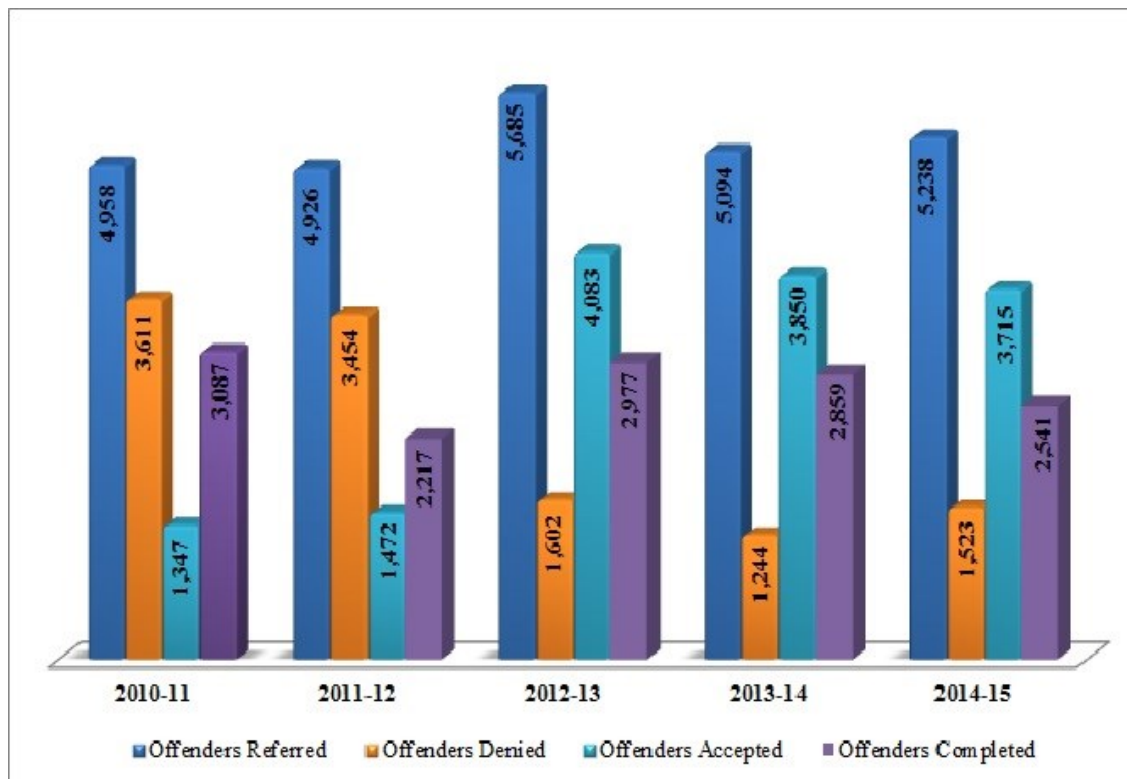
Adult Offender Work Program (AOWP) places defendants who are sentenced to 90 days in jail or less on work assignments with participating community and governmental agencies in lieu of jail confinement. Officers evaluate offenders to determine their suitability for this program, supervise offenders with respect to compliance with program rules and regulations, and forward commitment orders to the county jail when offenders do not comply.

The AOWP unit is currently staffed with three Deputy Probation Officers and three Probation Technicians, who perform all of the intake screening, rescheduling, and reports for the Court.

Adult Offender Work Program Statistics 7/01/2014 - 6/30/2015

Offenders Referred	5,238
Offenders Denied	1,523
Offenders Accepted	3,715
Offenders Completed	2,541

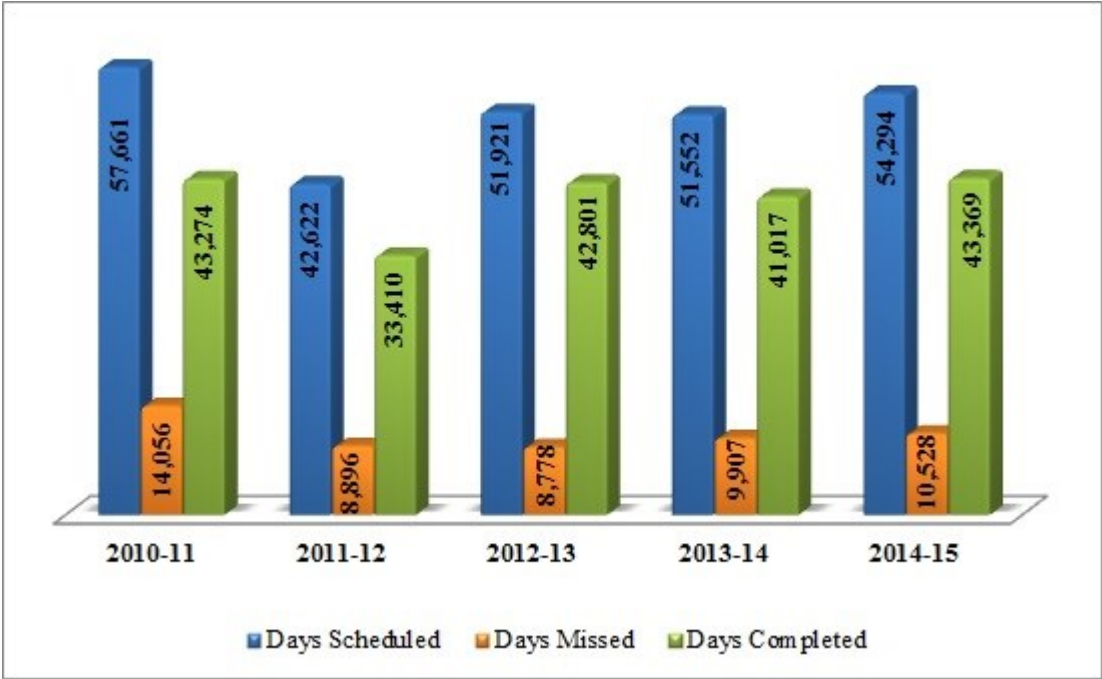
Chart Representing Past Five Fiscal Years



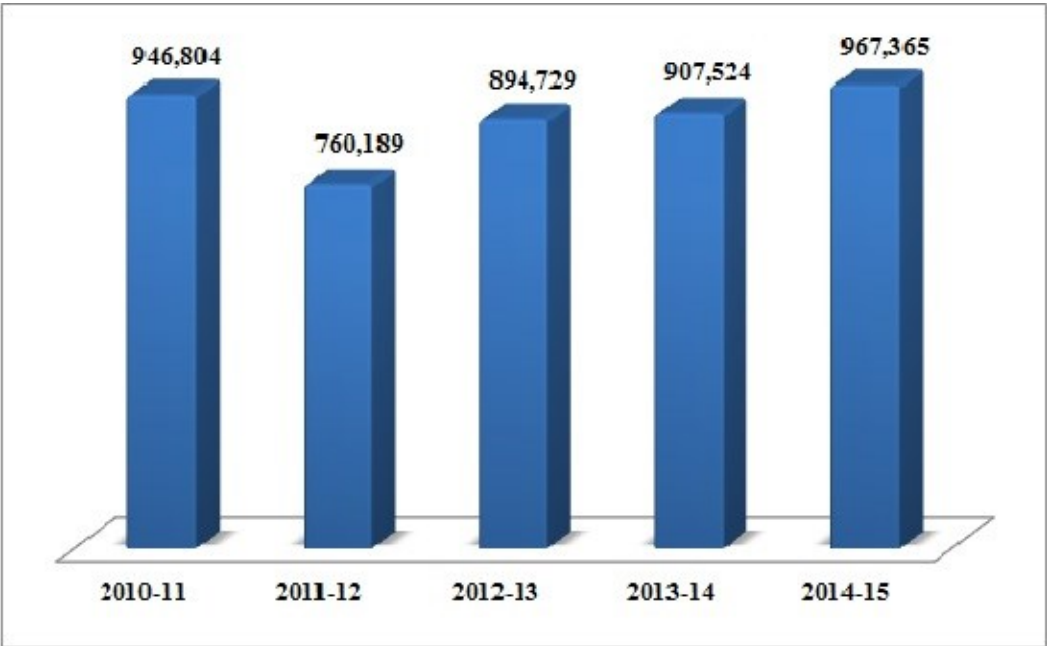
Adult Offender Work Program Statistics

Days Scheduled	54,294
Days Missed	10,528
Days Completed	43,369

Chart Representing Past Five Fiscal Years



A.O.W.P. Fees Collected Past Five Fiscal Years



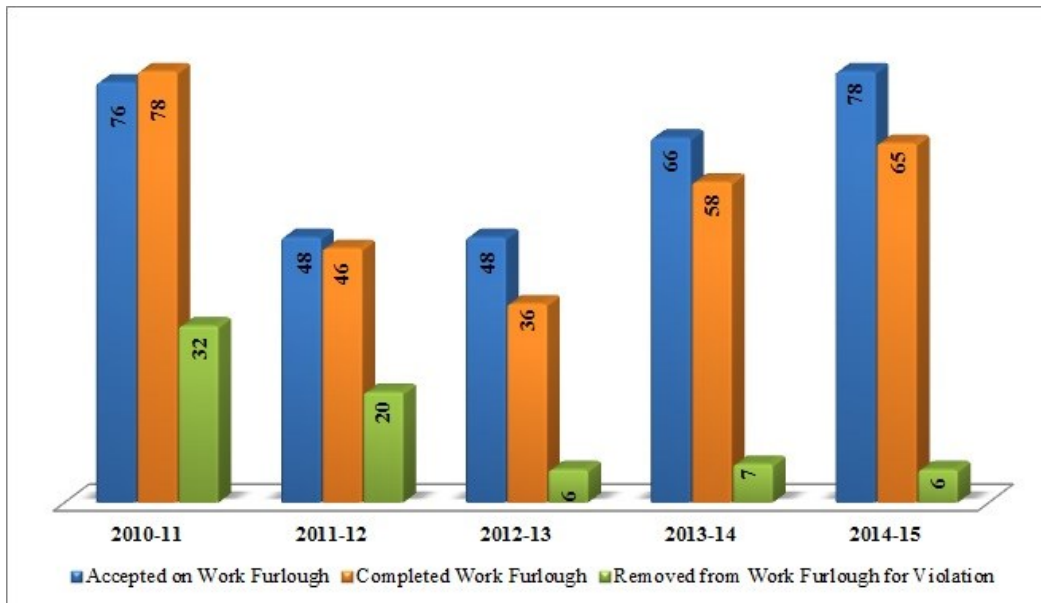
Work Furlough

The Work Furlough Program is an alternative to serving time in the county jail for those persons sentenced to more than 30 days in custody and referred by any of the local courts. The members of the unit determine eligibility and suitability. The Work Furlough unit sets up the parameters and limitations to which the person must adhere in order to be in compliance with the program.

Work Furlough Statistics 7/01/2014 - 6/30/2015

Accepted on Work Furlough	78
Completed Work Furlough	65
Removed From Work Furlough for Violation	6

Chart Representing Past Five Fiscal Years





ADULT INVESTIGATIONS

In the Adult Court Services Unit, referrals are received after a finding or plea of guilty on felony offenses. The comprehensive written pre-sentence report with recommendations includes prosecution and defense attorney contacts, defendant interviews, contact with law enforcement agencies and with victims of violent crimes. Restitution and court ordered conditions of probation are evaluated for inclusion in the sentencing recommendations to the Superior Court.

Adult Investigation Statistics 7/01/2014 - 6/30/2015

No Show Reports	205
RPO Short	842
RPO Standard	3,456
Supplemental	107
Investigations and Reports	4,610

Chart Representing Past Five Fiscal Years





ADULT FIELD SERVICES

Adult Field Special Services is an armed unit of 11 officers, and two Probation Technicians providing intensive supervision to high and some moderately high risk level offenders. The unit is responsible for numerous functions in order to enforce compliance with Court-ordered probation conditions. These functions includes providing written and verbal reports to the Superior Court, developing individualized case supervision plans based on an evaluation of an offender's criminogenic needs, acting as a liaison between treatment programs and the courts, referring offenders to appropriate treatment programs, drug, and alcohol testing, conducting field operations, and arresting probation violators when necessary. Offenders supervised by the unit are subject to evidence based supervision principles insuring the length and intensity of supervision is commensurate with the level of risk posed to the community.

Gang Supervision/MAGEC: Intensive supervision of high to moderately high risk offenders on felony probation with gang conditions of felony probation, and/or is required to be registered as gang offenders. Offenders may be on felony probation for non-gang related crimes but have an extensive history of gang involvement in the community or while incarcerated. The Multi-Agency Gang Enforcement Consortium (MAGEC) probation officer works as part of a cohesive team of law enforcement agencies that specifically target gangs and gang members with the mission of eradicating gang activity in Fresno County. The officer works closely with the various assigned city, county, state and federal law enforcement agencies to provide intensive supervision to the highest risk gang offenders in the metropolitan Fresno area.

Violent Offender Supervision: Intensive supervision of high to moderately high risk violent offenders. These offenders are on felony probation for violent crimes or have a history of violence that heightens their risk to reoffend in the future. Supervision of this population includes an evaluation of risk to reoffend violently, and development of a case plan addressing the highest criminogenic factors that can lead to future violence. Appropriate referrals are made to cognitive behavioral modification therapy, and anger management programs designed to minimize the cycle of violence and protecting the community.

High-risk Youthful Offender Supervision: Intensive supervision of high risk felony offenders between the ages of 18 - 25 years. The program was created as a result of SB 678 legislation offenders demonstrate high criminogenic needs for cognitive behavioral therapy programming. Many of these offenders are ordered to participate in evidence based programs such as the BI Day Reporting, Thinking for a Change (T4C), and other community based designed for young adults. These programs address the most prevalent criminogenic factors in this pro-criminal peer associations.

Felony DUI Intensive Supervision: Intensive supervision of offenders convicted of felony driving under the influence of drugs or alcohol, and/or involved in automobile accidents with great bodily injury. The program is coordinated through a grant with the California Office of Traffic Safety. Two validated risk assessment tools evaluate an offender's risk to reoffend and their risk to drink and drive. With an emphasis on field work, officers collaborate with DUI programs and local law enforcement checkpoints to increase compliance with court-ordered treatment requirements. Random home visits, on-the-spot alcohol testing, surveillance, and continuous alcohol monitoring technology is used to insure court-ordered compliance with supervision terms.

Mentally Ill Supervision: Specialized intensive supervision of offenders who are identified as having mental illness and/or co-occurring disorders. The officer collaborates with the Department of Behavioral Health, local medical providers and numerous community-based organizations to ensure the offender's mental health, medication, substance abuse and housing needs are being met. In an effort to ensure public safety and reduce recidivism, intensive supervision and appropriate treatment is a priority.

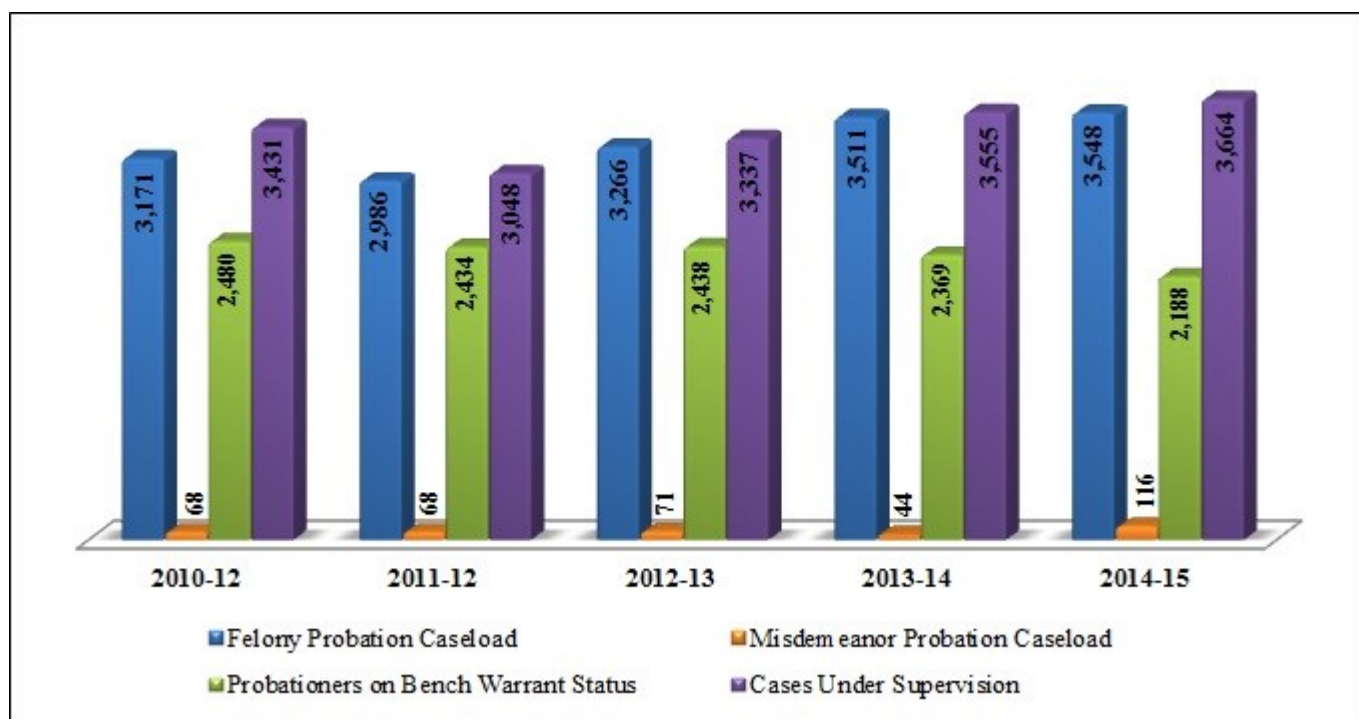


Narcotic Detection K-9 Unit: Narcotic canine enforcement duties include conducting narcotic sniffs of probationer’s residences, probationer’s property, juvenile institutions, schools and vehicles. In addition to responding department wide to canine requests, the canine teams also assists other law enforcement agencies while conducting search warrants, parcel checks, vehicle stops, and searches of penal institutions. The canine is trained to detect heroin, opium, methamphetamine, cocaine and marijuana, and has proven to not only be an effective asset in revealing offender’s sophisticated concealment methods, but has also proven to be a time-saving resource. In addition to canine’s enforcement duties, the canine team also plays a role in the Department’s prevention plan. The Department makes every effort to make the canine team available for presentations and events within the community.

Adult Field Services Caseloads As of 6/30/2015

Felony Probation Caseload	3,548
Misdemeanor Probation Caseload	116
Probationers on Bench Warrant Status	2,188
Adult Field Services Cases Under Supervision as of 6/30/2015 (not including warrant)	3,664

Chart Representing the Past Five Fiscal Years





DNA

DNA / Palm print Collection

On November 2, 2004 voter's passed Proposition 69, the "DNA Fingerprint, Unsolved Crime and Innocence Protection Act" which retroactively expanded the scope of offenders in which deoxyribonucleic acid (DNA) samples and prints must be collected pursuant to Penal Code 296. This requirement is mandatory for qualifying offenders. The Department of Justice mandates the Fresno County Probation Department to comply with the PC 296 in California. Consequently, the Probation Department is responsible for the collection of DNA for qualifying juvenile and adult offenders.

In July 2007 Adult Probation staff commenced collection of DNA and palm prints pursuant to PC 296. The following persons are required to provide buccal swab samples, right thumbprints, a full palm print impression from each hand, and any blood specimens or other biological samples required pursuant to PC 296.

- Persons convicted of any felony offense on or after November 3, 2004
- Persons currently in custody or on probation, parole, for any felony offense committed prior to November 3, 2004.
- Persons convicted of a misdemeanor, or other crime on or after November 3, 2004, but with a past qualifying felony conviction or adjudication of record.
- Persons who are required to register under PC 290 or PC 457.1 for felony or misdemeanor sex or arson offenses.
- Persons arrested on or after November 3, 2004 for felony PC 290 sex crimes, murder, voluntary manslaughter, or attempts to commit those crimes.
- Persons referred to and housed in mental health treatment programs for felony offense, includes those placed in such institutions both prior to and after November 3, 2004.
- All adults arrested for a felony offense.
- Out-of-state persons accepted into California for service of custody, probation, or parole under an interstate compact or other agreement.
- Any person who enters a plea conditioned upon the collection of a DNA sample.



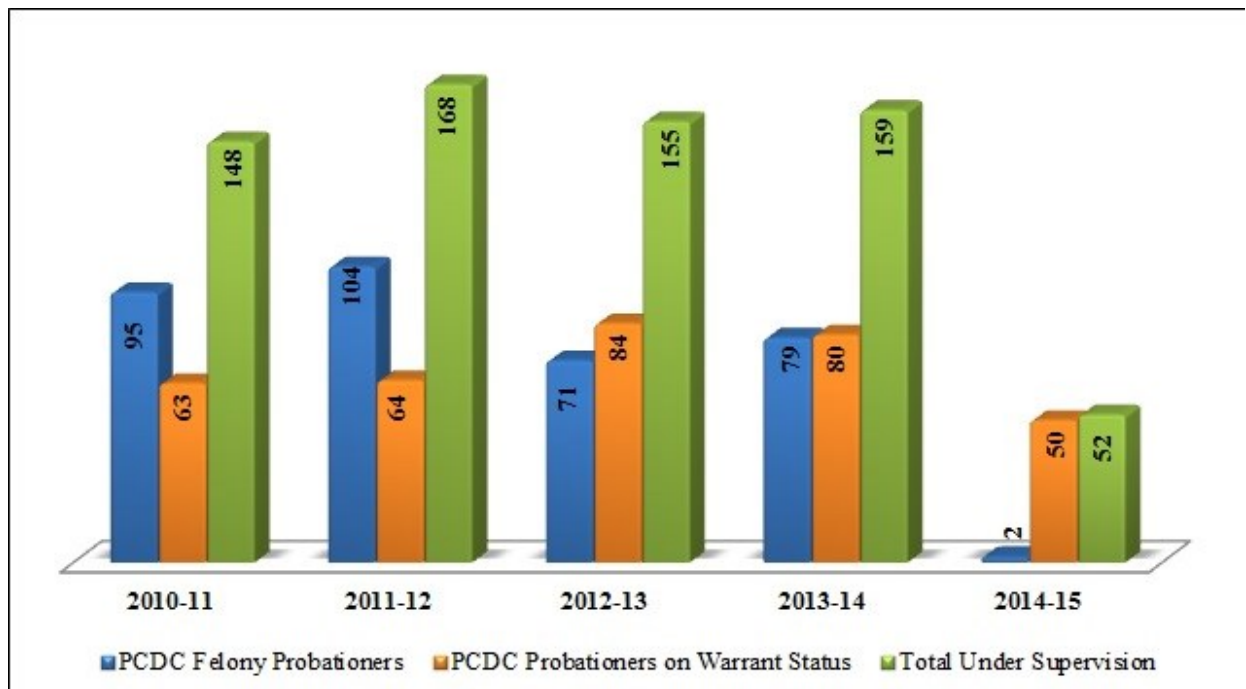
POST CONVICTION DRUG COURT

The Post Conviction Drug Court (PCDC) is a grant-funded program designed to provide supervision and treatment for a maximum of 150 participants convicted of felony drug charges. The Court places these offenders on formal felony probation to include standard conditions of probation in the PCDC program. Supervision, drug testing, treatment, and regular Court reviews encompass this 18-month drug court program. The deputy probation officer and probation technicians provide supervision, referrals, drug testing and work closely with the treatment provider to ensure the Court receives accurate information. They ensure accurate information is collected on all participants for statistical reporting. Since all of the participants are on formal felony probation, they are also subject to all other terms and conditions of probation. The deputy probation officer prepares pre-sentence investigation reports and recommendations to the Court as well as provides court officer duties each week. The deputy probation officer and probation technicians work in collaboration with various agencies. Formal graduations are conducted to publicly acknowledge the participants' achievements in completing the program.

Post Conviction Drug Court Caseload As of 6/30/2015

PCDC Felony Probationers	2
PCDC Probationers on Warrant Status	50
Total under Supervision as of June 30, 2015	52

Chart Representing Past Five Fiscal Years





PROPOSITION 36

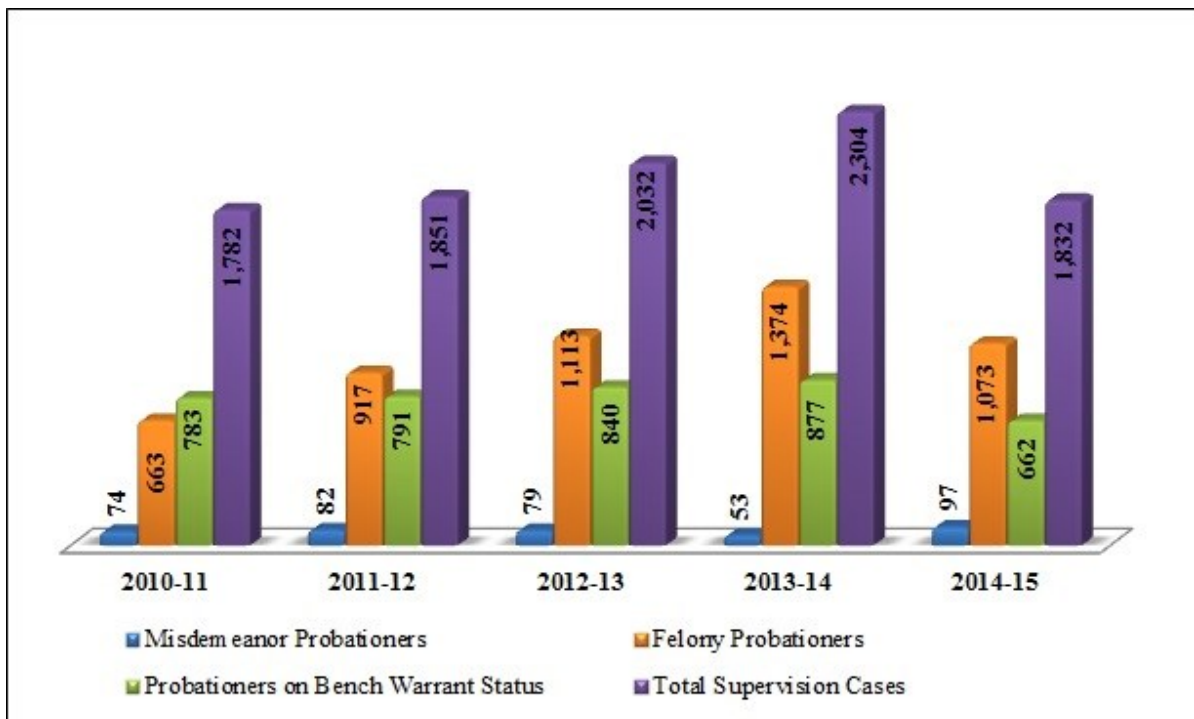
With the passage of Proposition 36 by California voters in 2000, the Fresno County Probation Department has worked in collaborative effort with various agencies to ensure implementation of the program. The proposition enacted statutes that established funding mechanisms for the treatment of persons with substance abuse problems; however, in July of 2009 the state legislature eliminated funding for Prop 36 services. Despite the elimination of funding, supervision and Targeted Case Management services are provided to defendants.

Three statutes were added to the California Penal Code as a result of the passage of Proposition 36. These statutes mandate probation and drug treatment for defendants convicted of a “nonviolent drug possession offense”. It also established procedures for violations of probation and parole in cases involving nonviolent drug possession offenses. The purpose and intent of Proposition 36 is to divert nonviolent drug offenders into community-based treatment programs.

Proposition 36 Caseloads As of 6/30/2015

Prop 36 Misdemeanor Probationers	97
Prop 36 Felony Probationers	1,073
Prop 36 Probationers on Bench Warrant Status	662
Total under Supervision as of June 30, 2015	1,832

Chart Representing Past Five Fiscal Years





DRUG TESTING SERVICES

The Drug Suppression Unit provides Court ordered drug testing services for the Adult Division. As a condition of probation or deferred entry of judgment, the Fresno County Superior Court orders defendants to submit to random chemical testing for the detection of controlled substance use. Urinalysis is performed by Probation Technicians and Deputy Probation Officers at the Drug Suppression Office. Toxicology and clinical laboratory testing is performed by a contracted professional and licensed laboratory.

Drug testing is used for monitoring defendant's compliance with court orders and their sobriety. Testing can detour defendants from ongoing drug usage or relapse prevention and assists with Probation case management services.





DOMESTIC VIOLENCE/SEX OFFENDER/ CHILD ABUSE/ ELDER ABUSE

The Domestic Violence/Sex Offender/Child Abuse/Elder Abuse Unit is an armed unit that supervises adults placed on probation for domestic violence, sex offenses, child abuse, and elder abuse related offenses. As of January 1, 1996, all defendants found guilty of an act of domestic violence and not committed to state prison are placed on formal probation for a period of three to five years and are required to attend a 52-week batterer's intervention program. The unit consists of different supervision levels and caseload assignments:

- ◆ **General** - domestic violence low/moderate/high supervision caseloads
- ◆ **VOISE** - an intensive supervision caseload funded through a State grant, is referred to as VOISE (Violent Offender Intensive Endeavor). The maximum number of cases is set at 40.
- ◆ **Elder Abuse** - a specialized caseload that supervises defendants placed on felony probation for elder and adult dependent abuse related offenses.
- ◆ **Sex Offender** - a specialized caseload that supervises defendants placed on misdemeanor and felony probation for sex related offenses. Sex offenders are typically required to attend a Sex Offender Treatment Program. The treatment providers are in compliance with state standards regarding PC 290 registrants.
- ◆ **Child Abuse** - a specialized caseload that supervises defendants placed on misdemeanor and felony probation for child abuse related offenses.
- ◆ **Behavioral Health Court** - a voluntary, post-conviction program with the defendant placed in the BHC program as a term and condition of probation. It's a specialized caseload that supervises defendants who are on misdemeanor or felony probation suffering from documented serious mental illness (SMI) which is an Axis I diagnosis consisting of Schizophrenia, Schizophrenia Affective Disorder, Bi-Polar Disorder, Major Depression, Delusional Disorder, and Psychotic Disorder. The maximum number of cases is set at 30.
- ◆ **Gang** - a specialized caseload consisting of defendants with a gang background, whether it is association, affiliation, former, drop, etc. Not all defendants will have gang restrictions.
- ◆ **Misdemeanors** - misdemeanor cases that are banked in one caseload which average 1,000 offenders.
- ◆ **Mental Health** - a specialized caseload that supervises defendants suffering from mental illness.

The unit is responsible for numerous functions to enforce compliance with the court-ordered probation conditions. Functions include: reviewing probation instructions with probationers, liaison between the court and rehabilitation programs, probation searches, seizing contraband and weapons, drug and alcohol testing, providing written and oral reports to the courts, and arresting probation violators. Conduct the Static Risk Offender Needs Guide (STRONG) assessment and developing case plans, on designated cases, which addresses goals/interventions for the defendant's top three identified needs.

The unit also has the responsibility of certifying and evaluating Batterer Intervention Programs. Unit staff annually review applications for certification, completes and administrative audit of each certified program and monitors BIP group sessions to ensure compliance with PC 1203.097 & 1201.098.

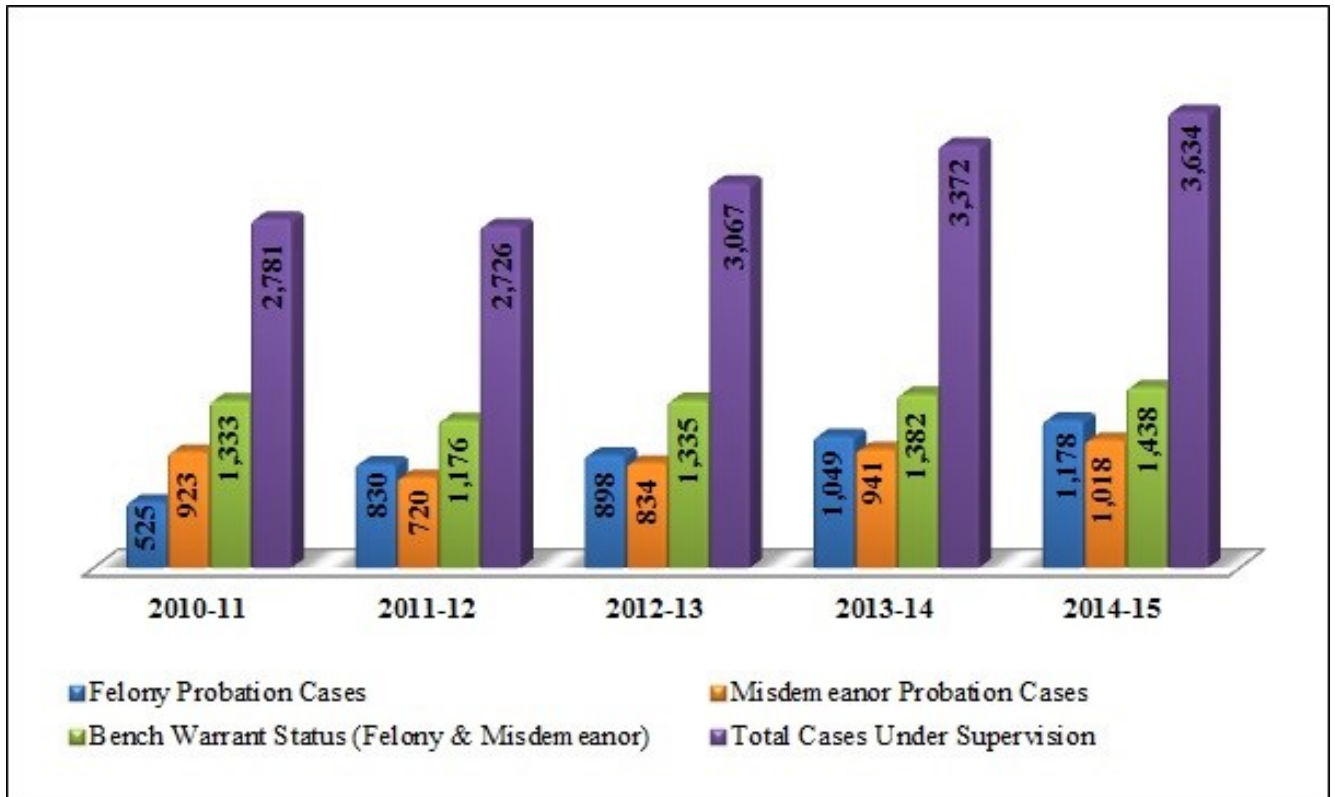
The unit supervisor participates in the Fresno Child Abuse Review Team (C.A.R.T.). The team consists of the Fresno County Probation Department, Department of Social Services (DSS), and California Department of Corrections and Rehabilitation Department of Adult Parole Operations. The mission is to ensure the safety of children at risk of victimization by a parolee, probationer, post release community supervision offender, or mandatory supervised release offender. The team meets Bi-monthly and staff cases that meet C.A.R.T. criteria.



Domestic Violence Caseloads As of 6/30/2015

Felony Probation Cases	1,178
Misdemeanor Probation Cases	1,018
Bench Warrant Status (Felony & Misdemeanor)	1,438
Total Cases under Supervision as of June 30, 2014	3,634

Chart Representing Past Five Fiscal Years





BEHAVIORAL HEALTH COURT

In June 2008, the Fresno County Behavioral Health Court (BHC) was established to address the increasing number of mentally ill defendants cycling through court and jail. The BHC is a cross-system collaboration of the Superior Court, Office of the Public Defender, Office of the District Attorney, Sheriff's Office, Jail Psychiatric Services, Department of Behavioral Health, the Probation Department and community treatment providers. The BHC is a voluntary, post-conviction program with the defendant placed in the BHC program as a term and condition of probation.

One deputy probation officer (DPO) is assigned to the BHC. The DPO works closely with defendants and provides updates to the team regarding compliance with terms and conditions of probation. The officer focuses on community safety through interacting with treatment providers and assisting individuals in accessing needed medical, social, educational and other services. The DPO regularly meets with clients, provides case management and supervision services and arranges and oversees restitution issues. In working with the BHC team, the DPO helps to ensure the program's goals are met. The primary goals of the BHC are to:

- Connect criminal defendants who suffer from serious mental illness and co-occurring disorders to treatment services in the community;
- Improve defendant's likelihood of success in their community through coordinated treatment, (i.e., mental health and substance abuse), access to housing/shelter, education, vocational training and other critical support services;
- Find appropriate dispositions to criminal charges, taking into consideration the facts of each case and prior criminal history;
- Ensure public safety and reduce recidivism and violence on re-arrest through appropriate mental health treatment and close supervision; and,
- Increase collaboration between the court, counsel, county agencies, and community mental health treatment services.



DAY REPORTING CENTER

Adult Day Reporting Center (ADRC) , are on-site cognitive restructuring programs designed as Evidence Based Practices and designed to change an offender's adverse thinking patterns, provide education and job training to enable long-term employment, and hold offenders accountable during the day.

The goals of the Adult Day Reporting Center are to reduce offender rearrests and recidivism, assist offenders in successful reentry by providing needed services, and increase public safety by holding offenders accountable. These goals will be achieved by providing skill-based learning opportunities, educational and vocational training and intensive community supervision.

Enhance their coping skills through group and peer counseling
Locate and maintain stable housing
Improve educational and vocational skills
Find and retain meaningful work
Structure their activities within the community
Receive intensive community supervision by their probation officers.

In Fresno County, the ADRC as designed and in the process of moving to full implementation has identified supervision, treatment and training for offenders who are identified through assessment for services. Up to 50 realignment offenders will eventually enrolled in the ADRC. The current facility is co-located with the Adult Drug Suppression function in Fresno. Offenders go through a four-phase program from one day to seven days per week and are typically seen on aftercare approximately six months into the program.



AB 109

The AB 109 Unit is an armed unit that supervises adults placed on Post Release Community Supervision (PRCS) and/or Mandatory Supervision (MS) under the authority of Assembly Bill (AB) 109, the Public Safety Realignment Act, which was signed into law on April 4, 2011, and was implemented on October 1, 2011. The historic legislation sets into motion a number of fundamental changes related to the incarceration; supervision and treatment of a designated group of offenders who previously would have been under the custody and control of the California Department of corrections and Rehabilitation (CDCR), the state prison system.

The units are responsible for numerous functions in order to enforce compliance with conditions of PRCS and MS. These functions include: acting as liaisons between the Court and treatment provider, utilizing intermediate sanctions, prepare written reports to the Court, arresting PRCS and MS violators, implement Evidence Based Practices by utilizing a risk assessment tool, identifying criminogenic needs, and data entry for statistical purposes, all with the emphasis on community safety.

The responsibilities for the units 20 probation officers and 3 probation technicians are divided by two units each assigned a Probation Services Manager (PSM). Probation officers under the AB 109/ACT unit supervise defendants on the generalized caseload. Probation officers in the AB 109/Pre-Trial/Special Services Unit target specific offenders which are comprised of the following: Domestic Violence, Gang Caseload, Child Abuse/Sex Offender, Transition from Jail to Community, and the Pre-trial caseload.



AB 109 After hours On Call Duty: As a result of the Criminal Justice Realignment Act (AB 109), the authority to place a hold and book Post Release Community Supervision (PRCS) offenders into the Fresno County Jail for alleged violations, requires prior authorization from the supervising county agency (Fresno County Probation). The request for authorization to book a PRCS offender can occur at any time of the day or night; therefore, a Deputy Probation Officer is available at all times including evening hours seven days a week including holidays to handle such requests.

Adult Compliance Team (ACT): The Community Corrections Partnership (CCP) joined a multi-agency safety alliance with Fresno County and County Justice Partners to create the Adult Compliance Team (A.C.T.) to establish an additional layer of offender supervision and public safety. The A.C.T. will consist of sworn officers from the Fresno County Probation Department, the Fresno County Sheriff's Department, the Fresno Police Department, the Clovis Police Department and investigator(s) from the Fresno County District Attorney's Office. Additional officer(s) from collaborating justice partners may be added to A.C.T. as deemed necessary.

A.C.T. officer complete all training relevant to evidence based practices, including cognitive therapy and motivational interviewing conforming to evidence based decisions making capabilities with the development of matrix of graduated recidivism sanctions.

Pretrial Services: The purpose of the pretrial release program, in accordance with evidence-based practices, is to promote due to process to those accused of crime, maintaining the integrity of the judicial process by securing defendants for trial, protecting victims and witnesses and providing the community with public safety services.

The Fresno County Probation Department Pretrial Services Program will has as its primary objective, to assist the court in making fair, prompt, and effective release decisions (using the Virginia Pretrial Risk Assessment Instrument), while monitoring and supervising released defendants to minimize the risk of non-appearance at court proceedings and the risk to the public safety.

Probation Service Center (PSC): The Community Corrections Partnership (CCP) has identified homelessness as a serious need found in the Assembly Bill (AB) 109 realignment population. In order to address this need, funds were allocated and the Fresno County Probation Department is working in conjunction with Turning Point, which provides housing, a case manager, and services in order for the offender to reintegrate back in the community.

Transition from Jail to Community (TJC): With the support of the Community Correction Partnership (CCP), the Fresno County Probation Department is working collaboration with the Fresno County Sheriff's Department providing in-custody services to offenders that are serving a split sentence under PC 1170(h)(5)(B)(i), with a risk score of either medium to high based upon the Static Risk Score (STRONG). When the offender enters the program, the Offender Needs Guide (ONG) will be completed to identify their criminogenic needs, as well as the case plan.

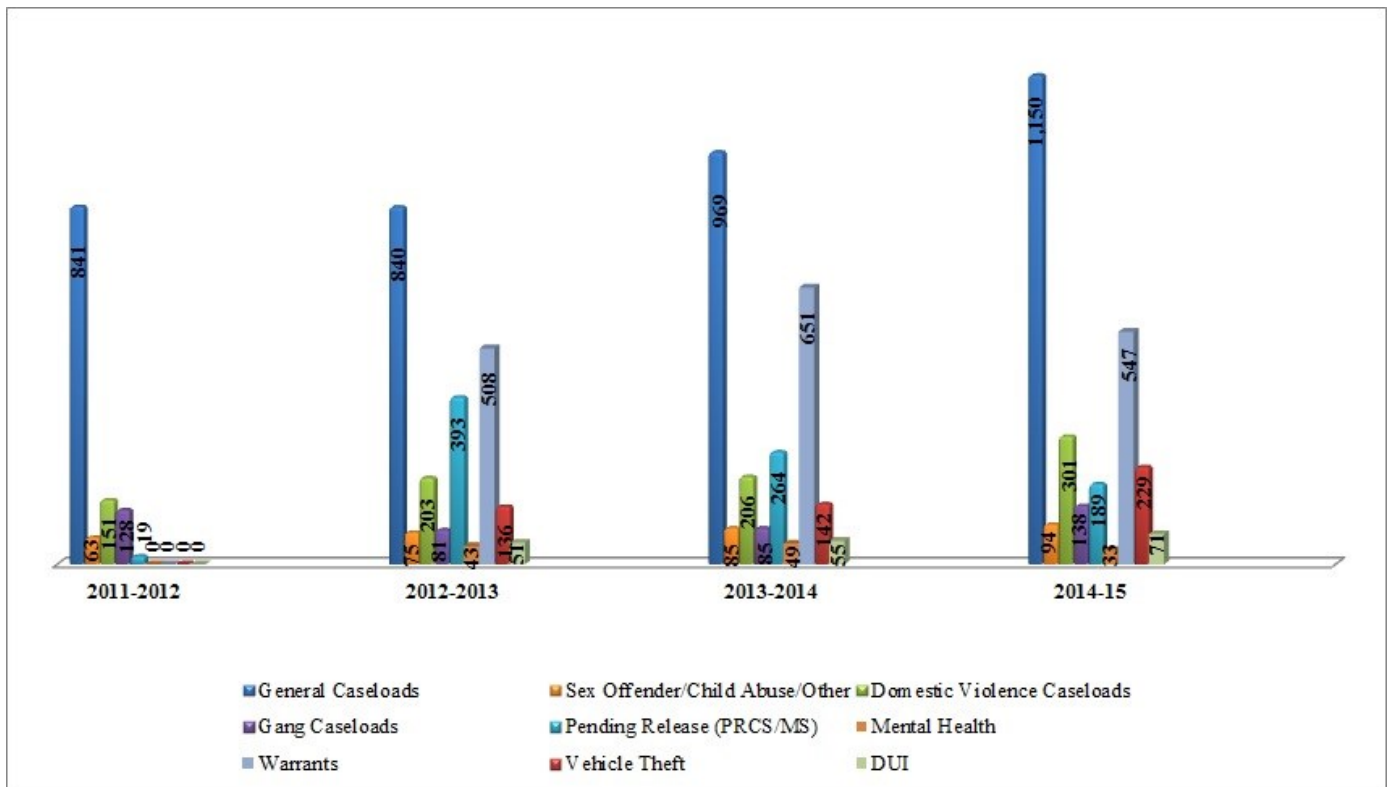
While the offender is participating in the program, they will complete Thinking for a Change (T4C), an integrated , cognitive behavioral change program for offenders that includes cognitive restructuring, social skills development, and development of problem solving skills. In addition, substance abuse treatment, mental health counseling, anger management classes, parenting and life skills classes, educational services (GED are also available.

When the offender completes the program and released in the community, TJC Deputy Probation Officer will retain case management responsibilities of the offender with the emphasis to ensure successful link-ages to community-based programs and reintegration into the community.

AB 109 Caseload as of 06/30/2015

General Caseloads	1,150
Sex Offender/Child Abuse/Other	94
Domestic Violence Caseloads	301
Gang Caseloads	138
Pending Release (PRCS/MS)	189
Mental Health	33
Warrants	547
Vehicle Theft	229
DUI	71

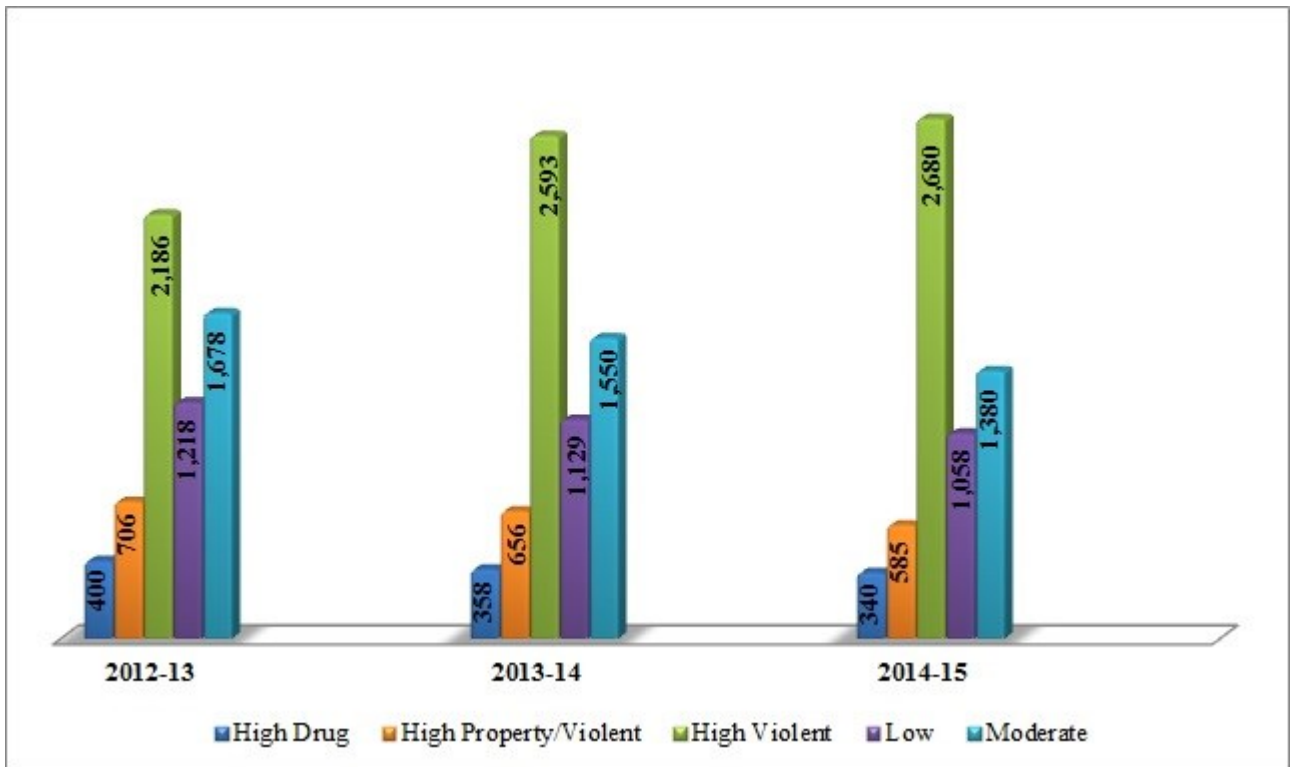
Chart Representing Past Three Years



Static Risk Assessment Scores as of 06/30/15

High Drug	340	6%
High Property/Violent	585	10%
High Violent	2,680	44%
Low	1,058	18%
Moderate	1,380	22%

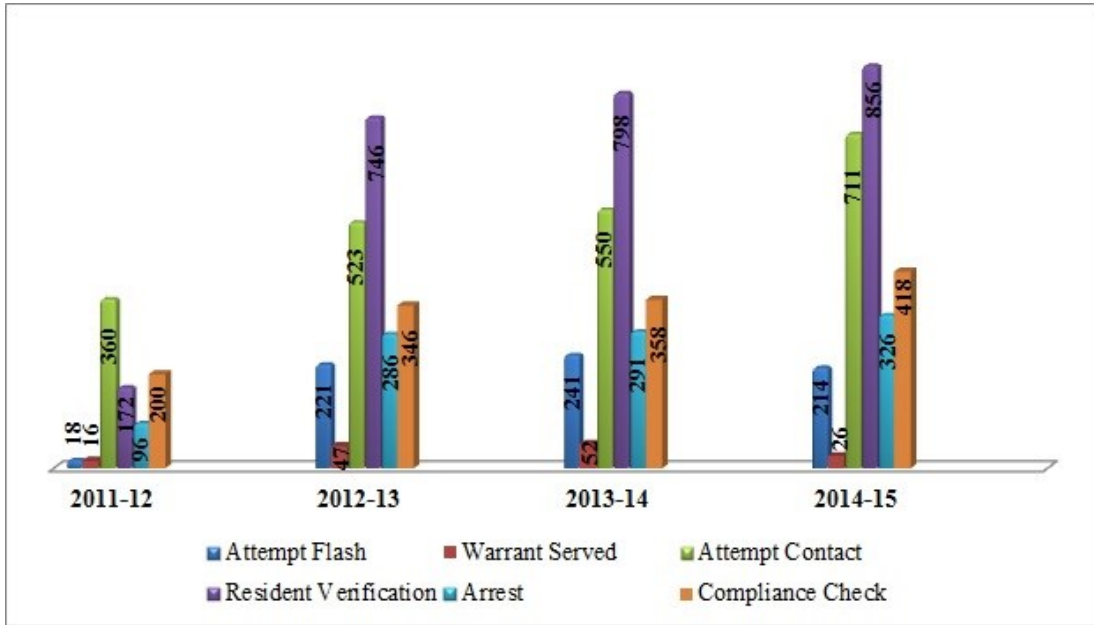
Chart Representing Past Three Years



**Adult Compliance Team (ACT)
As of 6/30/2015**

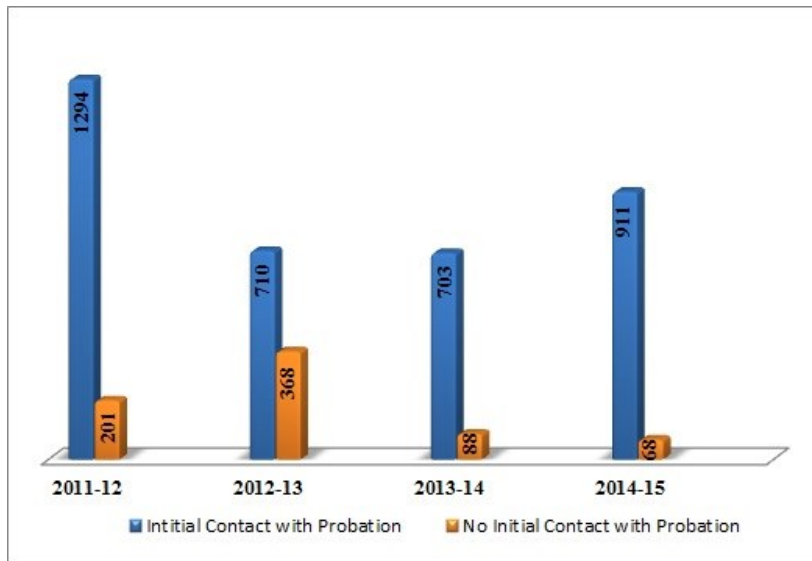
Attempt Flash	214
Warrant Served	26
Attempt Contact	711
Resident Verification	856
Arrest	326
Compliance Check	418

Chart Representing Past Three Years

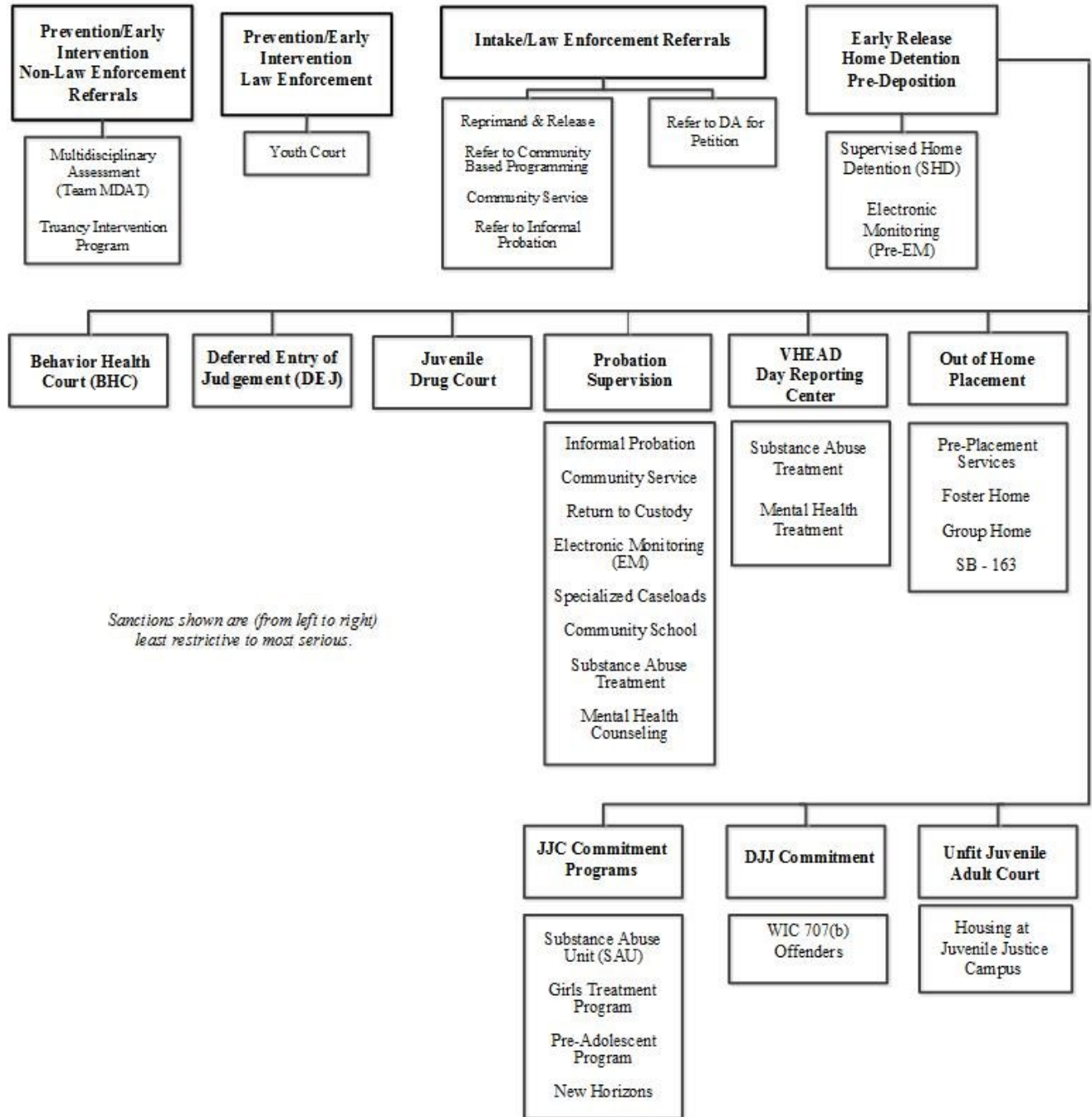


**Post Release Community Supervision Contacts
6/30/2015**

Initial Contact with Probation	911
No Initial Contact with Probation	68



CONTINUUM OF SANCTIONS



The use of a custodial commitment option may be utilized at any point in the Continuum, post disposition. The determination is made based upon a number of factors including, but not limited to, the offense, school adjustment, home behavior, etc.



JUVENILE INTAKE

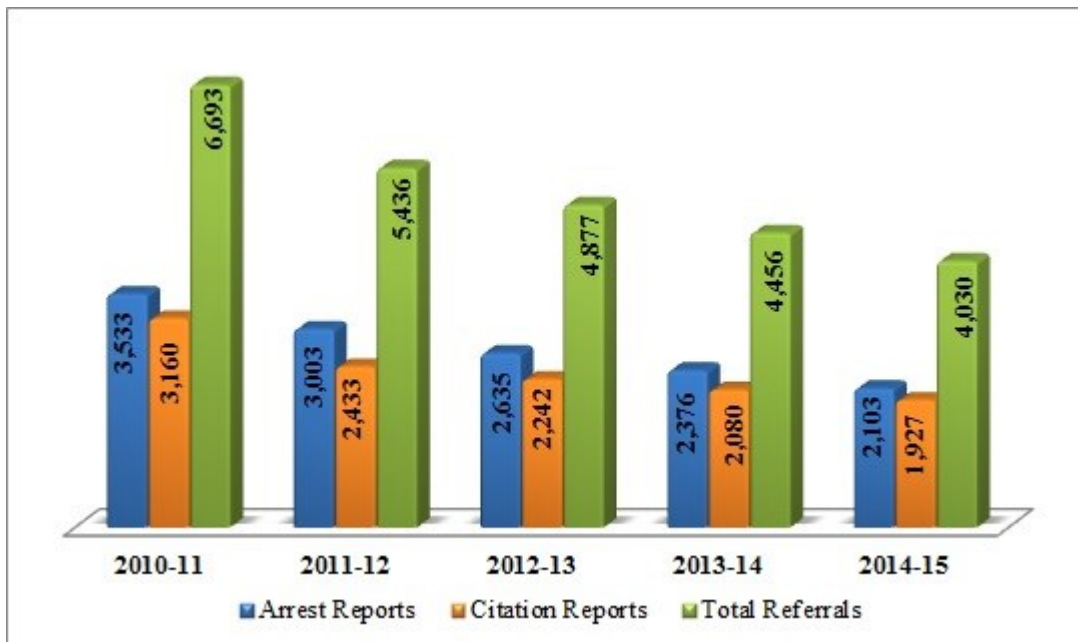
Juvenile Intake is a referral source for law enforcement on criminal and local ordinance violations, which encompasses cases that are cited as non-custody and those processed as in-custody through the Juvenile Justice Campus. The appropriate cases are referred to the District Attorney for the filing of a petition (charges) pursuant to existing law and department policy. All other law violations are disposed of through reprimand and release, and referral to the Victim Offender Reconciliation Program (VORP) of Central Valley, Inc., a community-based volunteer organization.

The Probation Department and Department of Social Services have a joint written protocol pursuant to WIC 241.1 to ensure appropriate recommendations are made to the Juvenile Court on children with specialized issues. The Juvenile Intake unit conducts WIC 241.1 staffings with the Department of Social Services (DSS) to determine what status will serve the best interests of the minor and the protection of society.

Juvenile Intake Referrals 7/01/2014 - 6/30/2015

Arrest Reports	2,103
Citation Reports	1,927
Total Referrals as of 6/30/2015	4,030

Graph Representing Past Five Fiscal Years

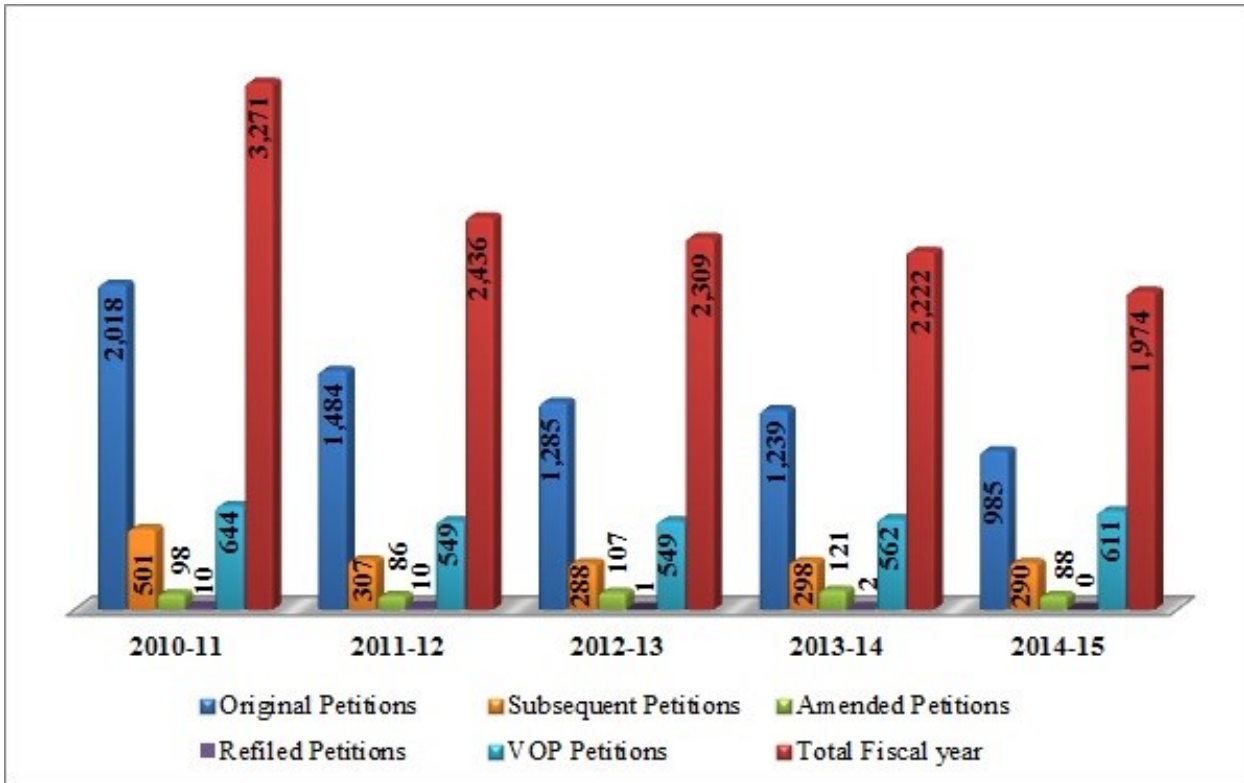


Juvenile Intake Referral Disposition

7/01/2014 - 6/30/2015

Original Petitions	985
Subsequent Petitions (Minor on Probation at the time of new petition)	290
Amended Petitions	88
Refiled Petitions	0
VOP Petitions	611
Total Juvenile Intake Referral Disposition as of 6/30/2015	1,974

Chart Representing Past Five Fiscal Years





JUVENILE INVESTIGATIONS

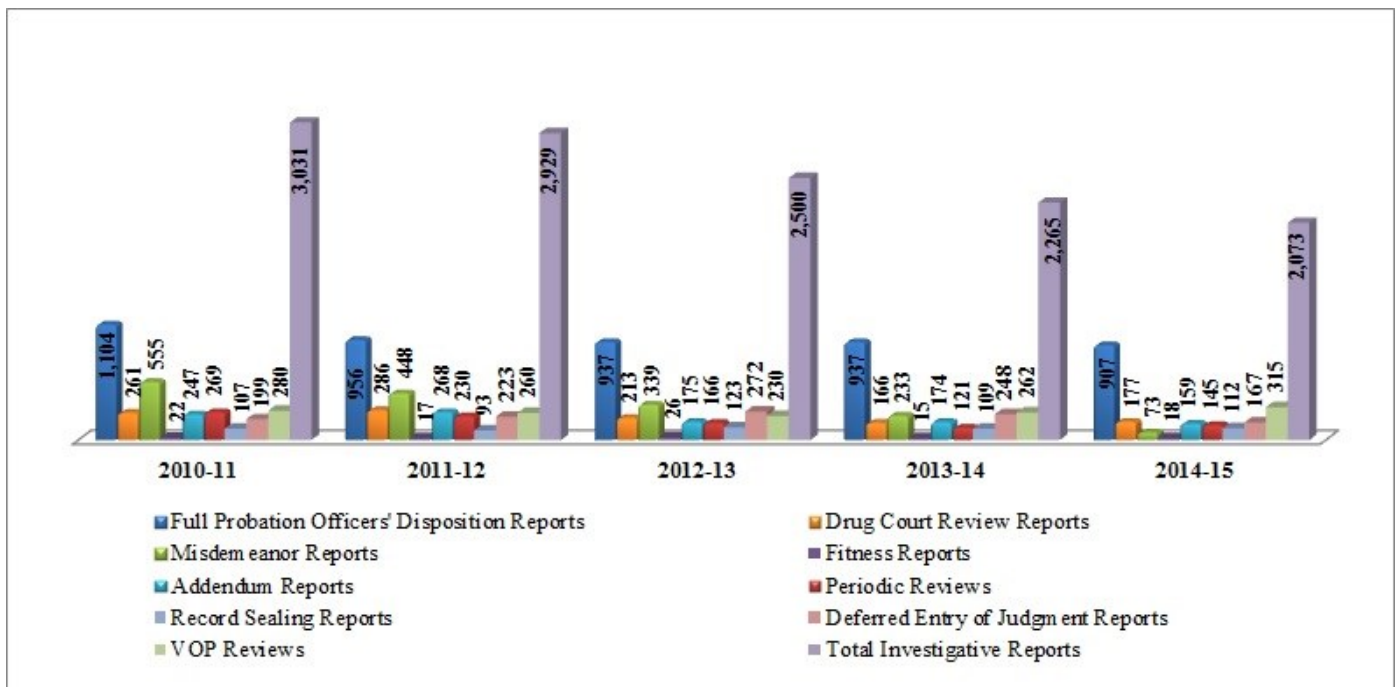
Juvenile Investigations is a mandated service provided to the Juvenile Delinquency Court. After adjudication of a petition filed by the District Attorney, an in-depth social study is completed which includes recommendations to the Court for disposition purposes. This Unit also provides the Court with Fitness Reports pursuant to WIC 707 and DEJ suitability reports pursuant to WIC 790, as well as Court Officers in each of the Juvenile Delinquency Courtrooms who assist the Court and both counsels in order that cases may proceed smoothly within the system.

Juvenile Investigation Statistics

7/01/2014 - 6/30/2015

Full Probation Officer's Disposition Reports	907
Drug Court Review Reports	177
Misdemeanor Reports	73
Fitness Reports (Adult Court Certifications)	18
Addendum Reports	159
Periodic Reviews (Prepared by Placement Unit)	145
Record Sealing Reports	112
Deferred Entry of Judgment Reports	167
VOP Reviews	315
Total Investigative Reports as of 6/30/2015	2,073

Chart Representing Past Five Fiscal Years





JUVENILE DRUG/SUBSTANCE ABUSE UNIT

The Juvenile Drug Court

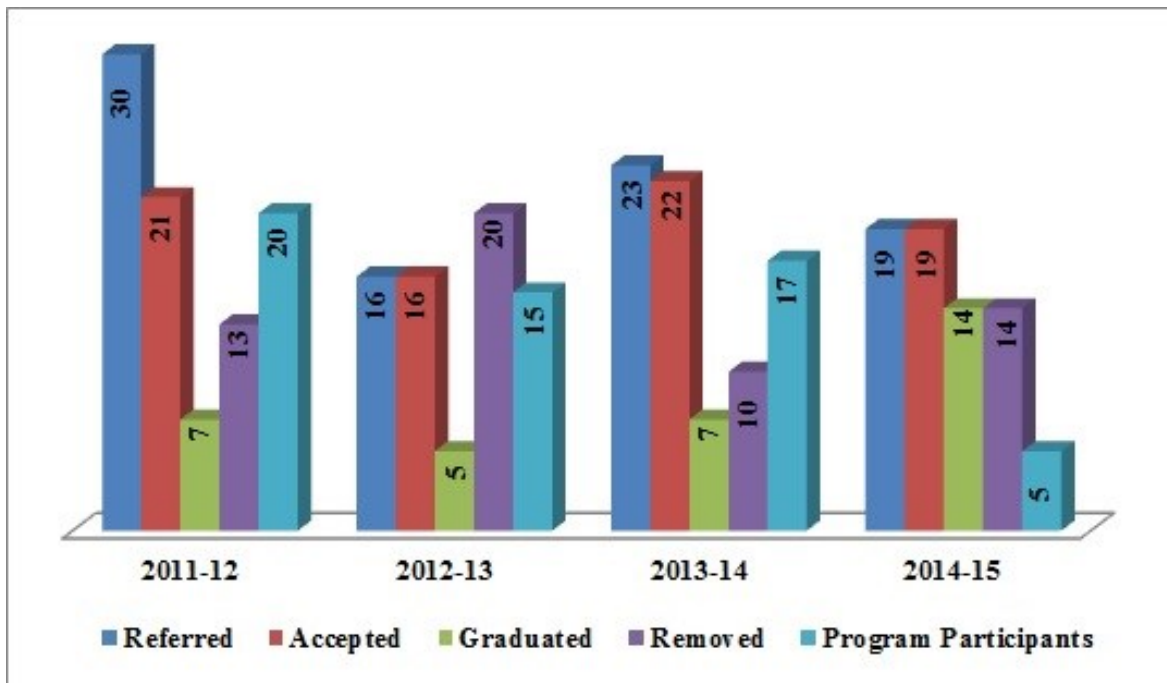
The Juvenile Drug Court is a grant-funded program consisting of one Superior Court Judge, a Deputy Probation Officer, a Deputy District Attorney, a Defense Attorney, and a Substance Abuse Treatment Provider. A team approach aimed at providing juvenile participants with the tools necessary to lead a drug and crime-free lifestyle is used. The program length is six months and consists of substance abuse treatment, intense supervision, drug testing, and Court reviews. The goal of the program is to divert minors whose primary issues are substance abuse from further involvement in the criminal justice system. The program holds periodic graduation ceremonies to celebrate those who have successfully completed the program.

Juvenile Drug Court Statistics

7/01/2014 - 6/30/2015

Referred	19
Accepted	19
Graduated	14
Removed	14
In Program as of June 30, 2015	5

Graph Representing Past Two Fiscal Years



Substance Abuse Unit Aftercare Services

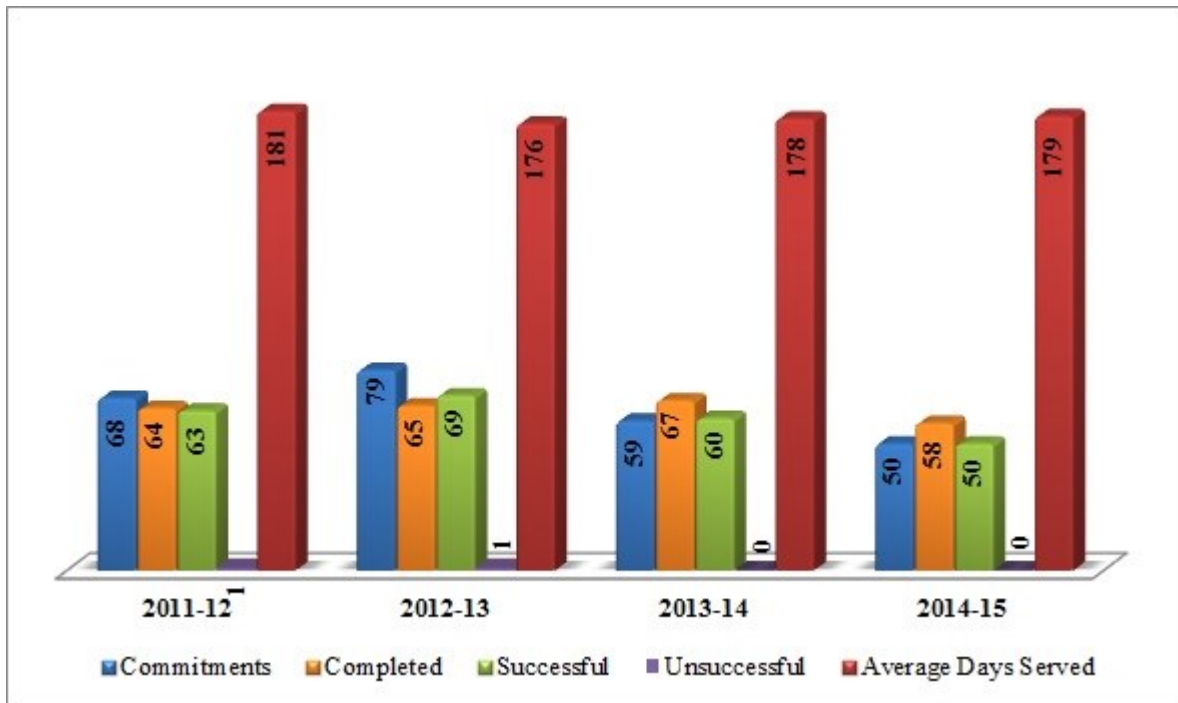
The Substance Abuse unit (SAU) aftercare service program is the last phase of the SAU program. The aftercare component includes enrollment in community based substance abuse services, frequent and random drug testing, school monitoring, and case management by a Deputy Probation Officer. Additional services include weekly case staffing with the treatment provider and referral to community agencies.

Substance Abuse Unit Statistics

7/01/2014 - 6/30/2015

Commitments	50
Completed	58
Successful	50
Unsuccessful	0
Average Days Served as of 6/30/2015	179

Chart Representing Past Two Fiscal Years





CAMPUS & JUVENILE SUPERVISION

The Fresno Unified School District and Fresno County Probation Department have collaborated successfully with school based intervention services for over 20-years. Currently there are eight Deputy Probation Officers assigned to the various mainstream and continuation program high schools thorough Fresno Unified School District. Since its inception school campus safety has been a priority to the collaborative. These efforts have been collective with schools, police, and probation to closely monitor juvenile probationers attending high school campuses while developing and implementing school based interventions i.e. restorative justice, youth courts, informal sanction and interventions. This also encompasses promoting youth development to include an age-appropriate prevention / intervention program for youth enrolled in Fresno Unified School District elementary schools.

The Central Unified School District and Fresno County Probation Department have similarly collaborated positively with school based intervention services for over 10-years. Currently there are two Deputy Probation Officers assigned to mainstream and continuation program high schools thorough Central Unified School District. Like the partnership with Fresno Unified, Deputy Probation Officers provide probation services and participate with the Police/Sheriff/Probation teams to ensure campus safety and supervising juvenile probationers attending schools within the district. Central Unified, the Court, and Probation also team together to provide school based interventions i.e. restorative justice, youth courts, informal sanction and interventions.

During the 2012/2013 school year Sanger Unified School District joined the school based intervention partnership with the Fresno County Probation Department. There is currently one Deputy Probation Officer assigned to Sanger Unified school district working collaborative with schools, police, and the community to closely monitor juvenile probationers attending Sanger Unified school campuses. The partnership has developed and implemented school based interventions i.e. restorative justice, youth courts, informal sanction and interventions.

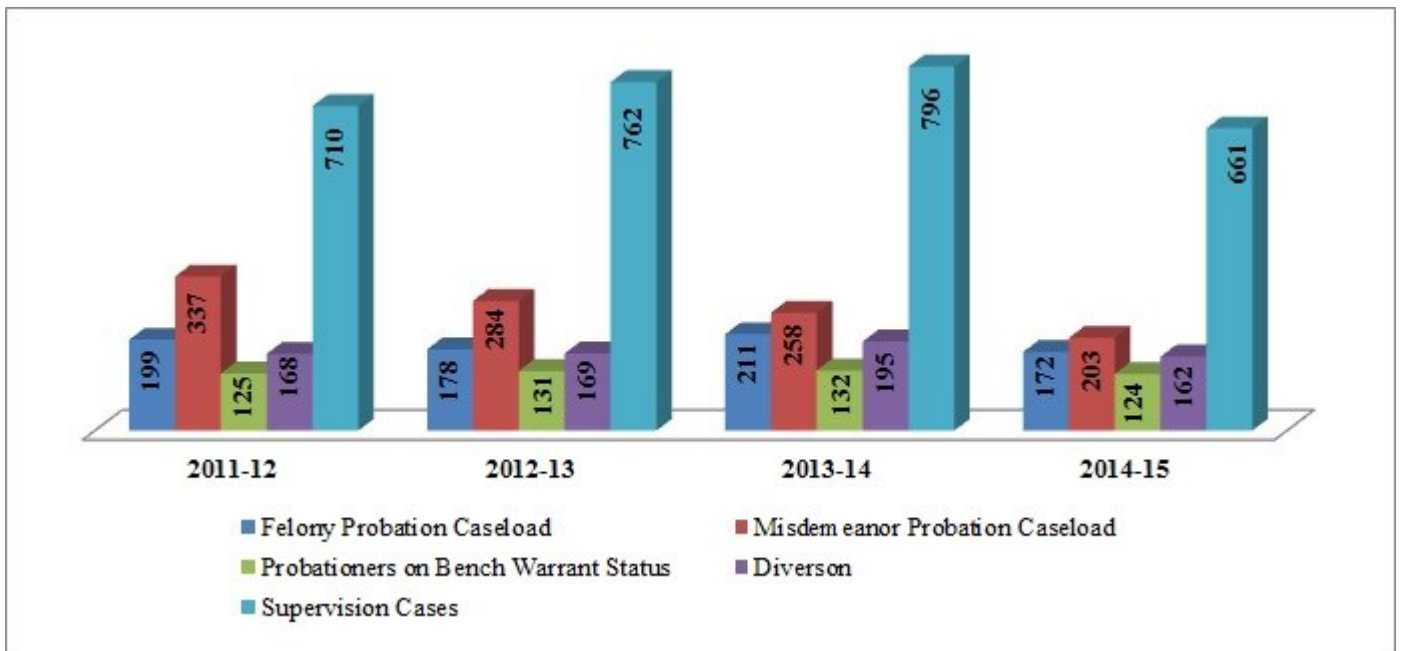


Juvenile Supervision is provided for minors and wards throughout the county to ensure accountability and compliance with Juvenile Court orders or Informal Probation sanctions. Supervision of minors on formal and informal probation is carried out by the Campus, Special Services and Supervision Units, which is inclusive of East/West County Supervision, High Risk Supervision, RED (Re-Entry Disposition DJJ Cases), Auto Thefts and the Sex Offender caseload. Each respective officer works closely with the collaborative agencies, i.e. law enforcement, school districts and service treatment providers to carry out the vision of the department. The primary goal of supervision is the protection of the community. Supervision of minors incorporates both community and office contacts. Currently there are seven officers assigned to the Supervision Unit and four assigned to the Special Services Unit.

Supervision Statistics 7/01/2014 - 6/30/2015

Felony Probation Caseload	172
Misdemeanor Probation Caseload	203
Probationers on Bench Warrant Status	124
Diversion	162
Total Juvenile Cases on Supervision as of June 30, 2015	661

Graph Representing Past Three Fiscal Years





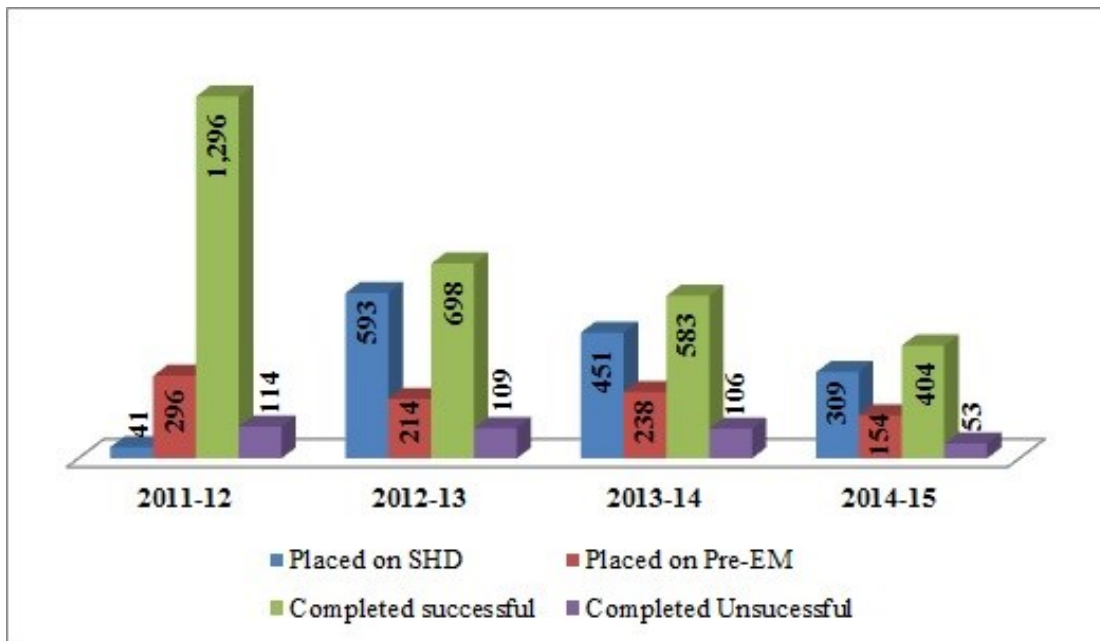
ELECTRONIC MONITORING

If the decision is made by booking staff to release the minor from the Juvenile Justice Campus on Supervised Home Detention, a contract specifying the conditions of the minor’s release must be signed and agreed upon by the minor and his or her parent(s) or guardian(s). The contract requires the minor to be in the presence of his or her parent(s) or guardian(s) at all times except when the minor is at school. In some cases, the Court will order the minor to be monitored electronically as a condition of release pending further Court hearings. An electronic monitoring device is physically attached to the minor’s ankle and additional equipment is installed in the minor’s residential phone system. A minor who is violating the conditions of the Electronic Monitoring Program, may be returned to the Juvenile Justice Campus for secure confinement pending future Court hearings.

Electronic Monitoring Statistics 7/01/2014 - 6/30/2015

Placed on SHD	309
Placed on Pre-EM	154
Completed Successful	404
Completed Unsuccessful	53

Graph Representing Past Three Fiscal Years



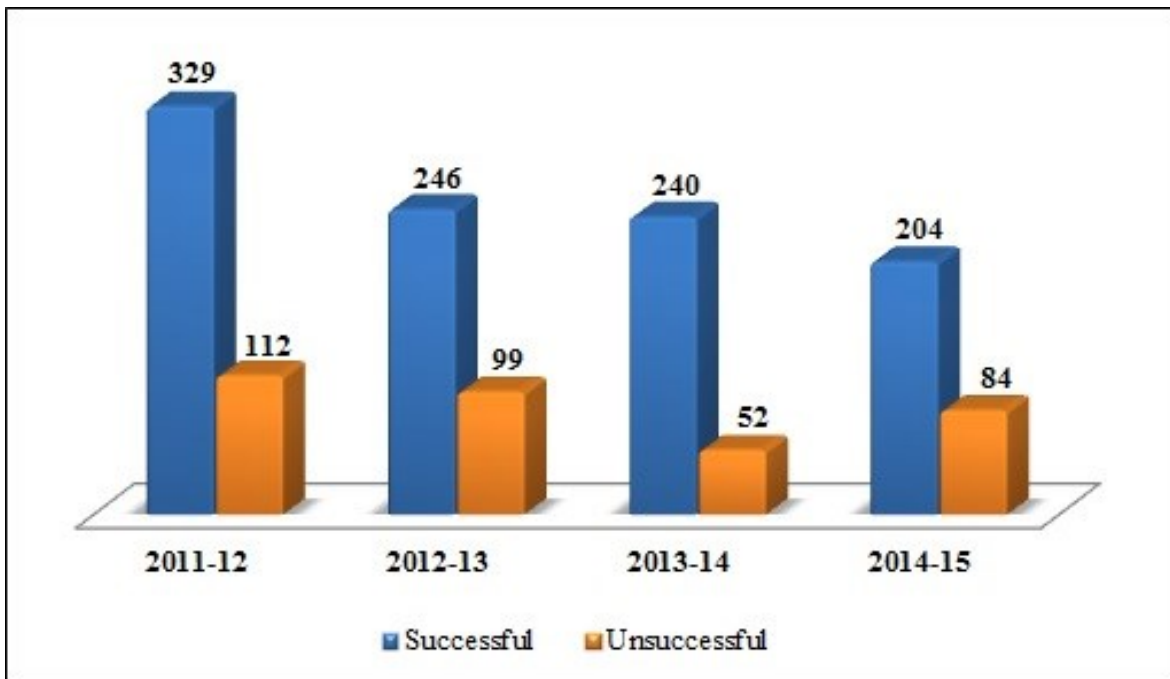
Post Electronic Monitoring

Post Disposition Electronic Monitoring is a Court-ordered house arrest program for wards of the Juvenile Court. This program is utilized by the Juvenile Court as an alternative to incarceration at the Juvenile Justice Campus. Minors on Post Disposition Electronic Monitoring are supervised by Deputy Probation Officers and these minors are confined to their residences, except for school attendance, medical/counseling appointments, Court appearances or other times excused by the Deputy Probation Officer. The Post Electronic Monitoring Program is also utilized as a component of a Day Reporting Center commitment. Violations of the program are reported to the Court by filing a violation of probation petition.

Placed on EM Post

Successful	204
Unsuccessful	84

Graph Representing Past Three Fiscal Years





PLACEMENT

The Juvenile Placement Unit places minors removed from the custody of their parents by Juvenile Delinquency Court pursuant to Welfare And Institutions Code Section 727. Based on individual level of care needed, minors are placed, with relatives, NREFM's (non-related extended family members), foster homes, group homes (Levels 10-14) and out of state, and other appropriate out-of-home placements. Some wards are returned to the custody of the parents after successful intervention, but if there is no parent available for return, a permanency plan is developed. One of the interventions that is utilized is Wrap-around services. All wards are supervised in placement by assigned Deputy Probation Officers and are seen in person on a monthly basis to ensure their needs are being met. This unit also operates a pre-placement supervision program or "family maintenance services" in an effort to strengthen/stabilize the ward's home environment to negate the need for out-of-home placement.

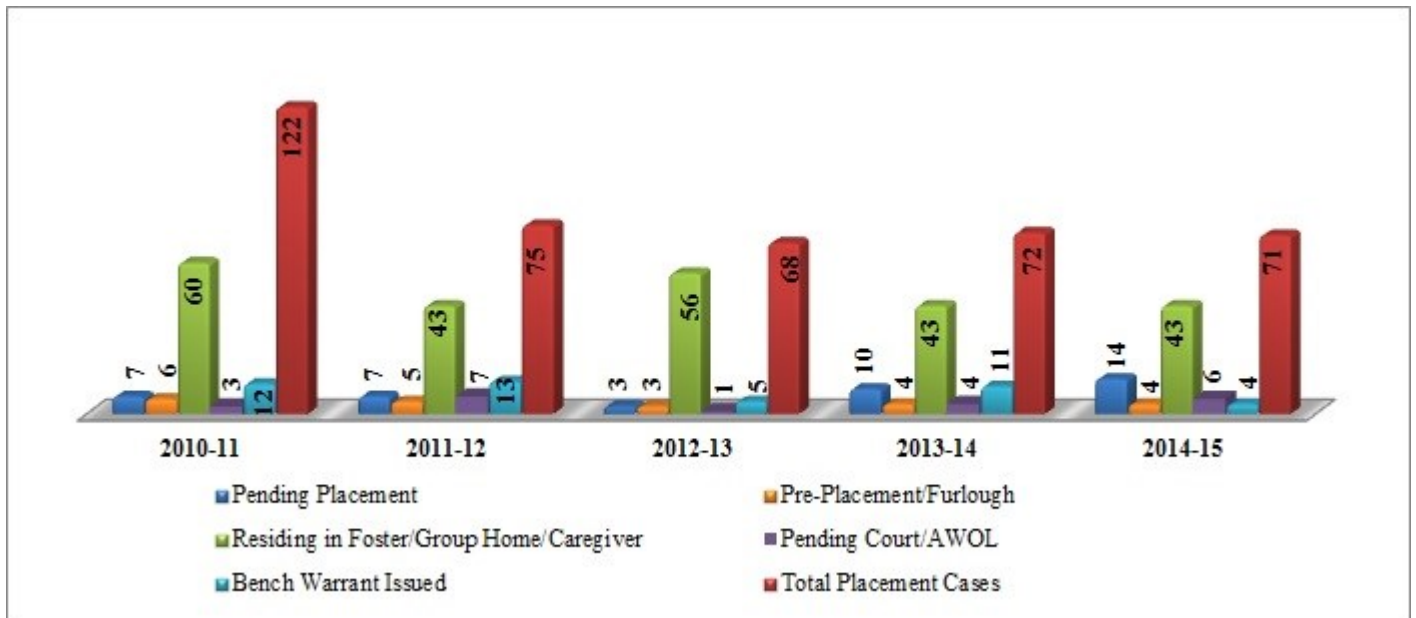
The Juvenile Placement Unit in collaboration with the Fresno County Department of Social Services have implemented the SB 163 Wraparound and Multi-Dimensional Treatment Foster Care services programs for probation wards that would otherwise be placed in out of home placements. The goal of the program is to improve the family situation and break down barriers that are preventing the family from functioning successfully, through financial assistance, counseling, transportation, problem solving, employment, and ultimately self-reliance. Other collaboration projects include the Foster Care Standards and Oversight Committee, Foster Youth Educational Services Committee, Interagency Resource and Placement Committee (IRPC), JJC Special Education focus groups, Placement unit and JJC mental health pending placement staffing, CC25I Youth Transition Task Force, Independent Living Program (ILP), Child Abuse Review Team (CART), the California child and Family Services Review (C-CSFR) or AB 636 that consists of the Self Evaluation, the System Improvement Plan (SIP), and the Peer Quality Case Review (PQCR). On October 1, 2010, the Juvenile Placement Unit started inputting information into the CWS/CMS database on all foster youth in accordance with NYTD (National Youth in Transition Database) standards. In addition, on January 1, 2011, the unit began providing services and supervision to the AB12 population known as Non minor dependents.

Placement Unit Statistics

As of 6/30/2015

Pending Placement	14
Pre-Placement/Furlough	4
Residing in Foster/Group Home/Caregiver	43
Pending Court/AWOL	6
Bench Warrant Issued	4
Total Placement Cases as of June 30, 2015	71

Graph Representing Past Five Fiscal Year

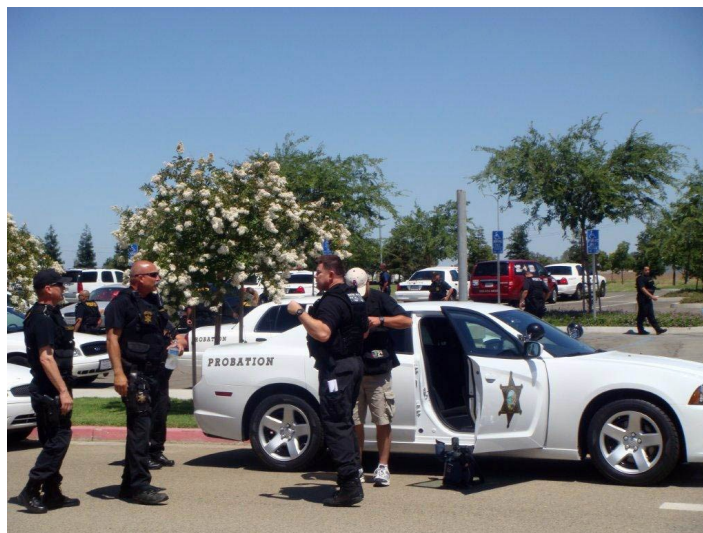




BEHAVIORAL HEALTH COURT

Juvenile Justice Mental Health Collaborative/Family Behavioral Health Court (BHC)

This project, formerly known as Behavioral Health Court, combines the use of thorough mental health screenings and assessments with intensive treatment and services provided through, Therapeutic Behavioral Services (TBS), Assertive Community Treatment (ACT). Youth identified with possible mental health conditions are referred to the Behavioral Health Court. An interdisciplinary FBHC team is led by the Presiding Judge of the Juvenile Delinquency Court and includes probation and clinical staff, a Juvenile Justice Services Coordinator, public defender, deputy district attorney, and an educational liaison. Youth admitted to the program receive a comprehensive psychiatric evaluation and intensive case management and probation supervision while in the community. The FBHC team works with the youth and his/her family to develop an individualized treatment plan services, which may include in-home individual and family therapy, medication management, crisis counseling, and assistance with housing, employment, education, transportation and incentives. As deemed necessary, the Court orders status reviews to monitor the youths' progress, and in each case, the FBHC team determines successful completion of, or termination from, the program. Two Deputy Probation Officers are assigned to the program to facilitate services and enforcement of Court orders. The Court hears monthly progress reports from all collaborative members and there is ongoing assessment and linkages to community based services.

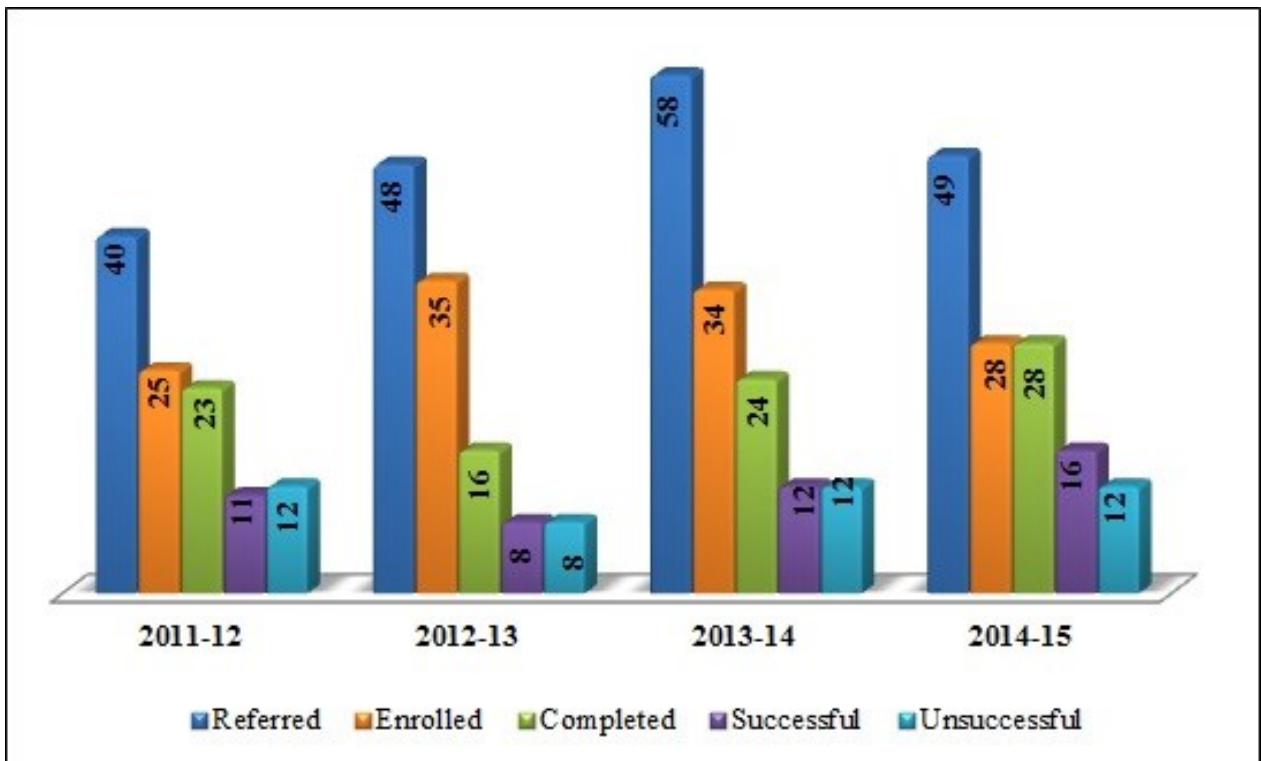


BEHAVIOR HEALTH COURT

As of 6/30/2015

Referred	49
Enrolled	28
Completed	28
Successful	16
Unsuccessful	12

GRAPH REPRESENTING PAST THREE FISCAL YEARS





PREVENTION AND INTERVENTION



Yosemite Falls (Photo by Dolly Quan)



TRUANCY INTERVENTION PROGRAM

The Truancy Intervention Program is a partnership between the Fresno County Probation Department, Fresno County Office of Education, Kermit Koontz Educational Complex, Violent Heintz Educational Academy, and 10 school districts including Caruthers Unified, Coalinga-Huron Unified, Firebaugh-Las Deltas Unified, Golden Plains Unified, Kerman Unified, Laton Unified, Mendota Unified, Sanger Unified, Washington Colony Elementary School District, and Washington Unified School District. The program is designed to address chronic truancy with the intervention of legal actions against the parents and or the minors. Each district has showed improvement in average daily attendance (ADA), which has allowed each district to recover additional funding resources.

California state law allows a minor to accrue three unexcused absences a year before being deemed a truant. However, all cases that have reached a District School Attendance Review Board level (SARB) have an extensive history of poor attendance with usually no less than 10 unexcused absences. Each district takes children and their parents through a process of several meetings at the school level prior to being referred to the SARB, in each district. At the SARB hearings, the parents and minors are required to sign a contract with rules and conditions. Parents are considered the responsible party with 6-13 year olds. However, 14-18 year olds are considered responsible for their own actions and are often given community service, or placed on an informal probation contract until their attendance improves. Their California Drivers License can be delayed or suspended up to year for their truancy. The parents are often referred to parenting classes or family counseling. There were 55 minors referred to the Truancy Intervention Program from July 1, 2013 to June 30, 2014.



JUVENILE JUSTICE CAMPUS

The Juvenile Justice Campus (JJC) both detention and commitment was opened on July 22, 2006. This state of the art facility has gained nation-wide attention and has been a success both operationally as well as therapeutically for those minors entrusted to the department's care. At a cost \$145 million dollars, it was the largest capital project in Fresno County history.

The JJC is located on the southwest corner of Freeway 99 and American Avenue and consists of a 240 - bed detention facility for those minors going through the court process; and a 240 - bed commitment facility for those minors formally sentenced by the Juvenile Court to a specific treatment program. The Core Building of the JJC includes booking, intake, medical and mental health staff and offices. The Central Plant contains facility storage, the laundry operations, facility maintenance staff and offices, and other related functions. The site also has its own water treatment facility. The construction of the Juvenile Delinquency Court Building was completed and placed in operation in July 2009.

The JJC Facility has provided Probation staff with a multitude of new resources to provide minors with structure and security. The design and philosophy of the JJC has provided the opportunity for new programs and approaches to detention and commitment programs.

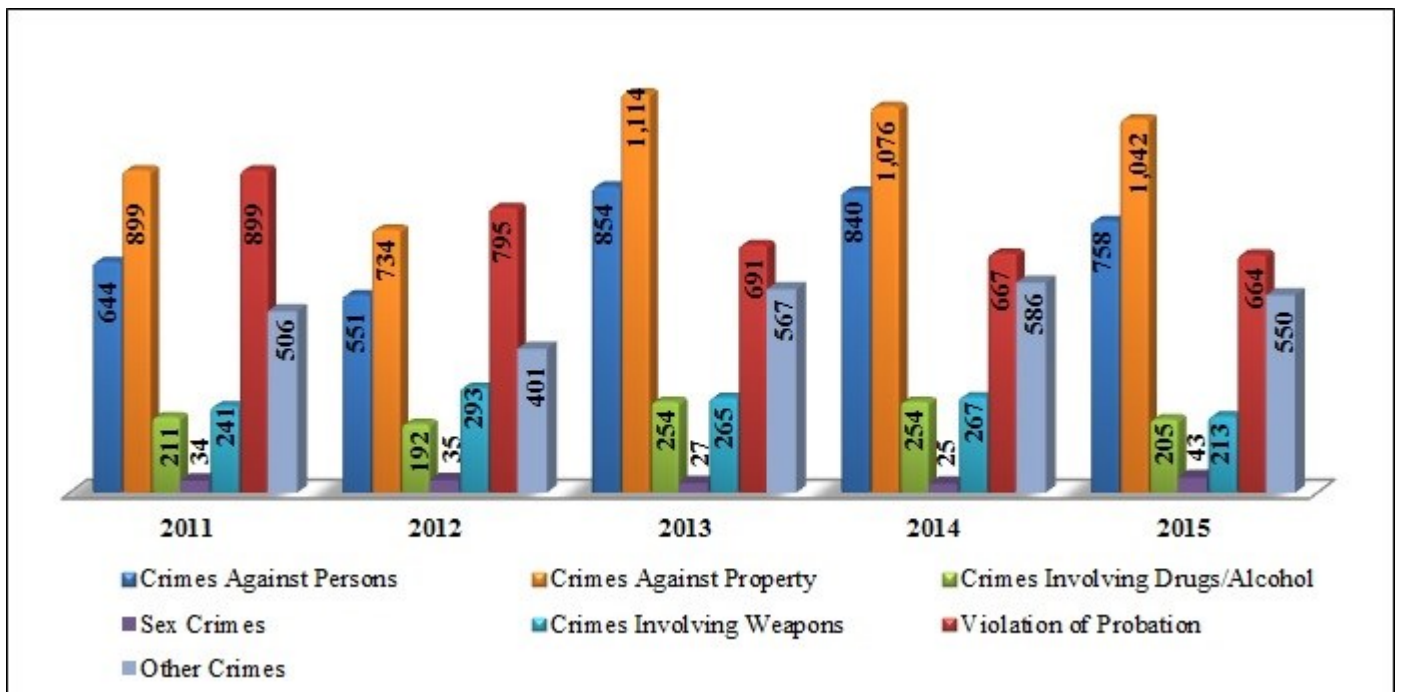
The JJC receives minors in custody from numerous different agencies in the County of Fresno. This includes minors transferred to Fresno County from other jurisdictions and state agencies.

The expansion of the JJC has allowed the flexibility to house its population in specialized groupings according to criminal sophistication, age, gender, and court status. The result has been an ability to more easily target and manage populations within the facility.

**BOOKINGS AT JUVENILE JUSTICE CAMPUS
CHART REPRESENTING PAST FIVE FISCAL YEARS**



**BOOKINGS AT JUVENILE JUSTICE CAMPUS
CHART REPRESENTING PAST FIVE FISCAL YEARS**





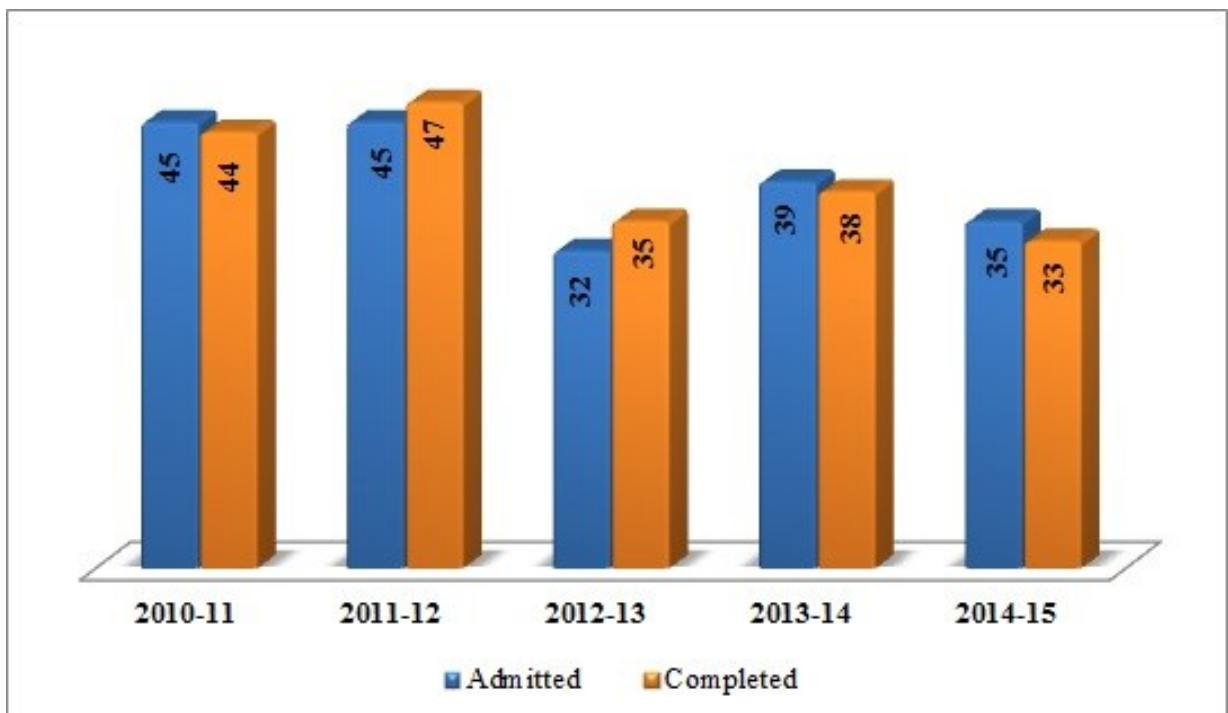
COMMITMENT PROGRAM

Girls Treatment Program

The 63-day commitment program is a short-term treatment program for girls at the JJC. The program has a rated capacity of 10 minors in a group. At any given time approximately 6-10 minors, ages 13 to 18, are committed by the Juvenile Court into this 63-day commitment program. The program is designed to hold minors accountable for their behavior, as well as meet their needs through individual and group sessions from mental health staff. Additionally, minors committed to this program receive life skills and educational training from a variety of community-based programs and organizations on campus.

Girls committed to this program are also eligible to earn furloughs to aid in the transition back into the family/home environment after completion of commitment. Probation provides for transition services for the minors' return to their homes and local school programs.

Chart Representing Past Five Fiscal Years



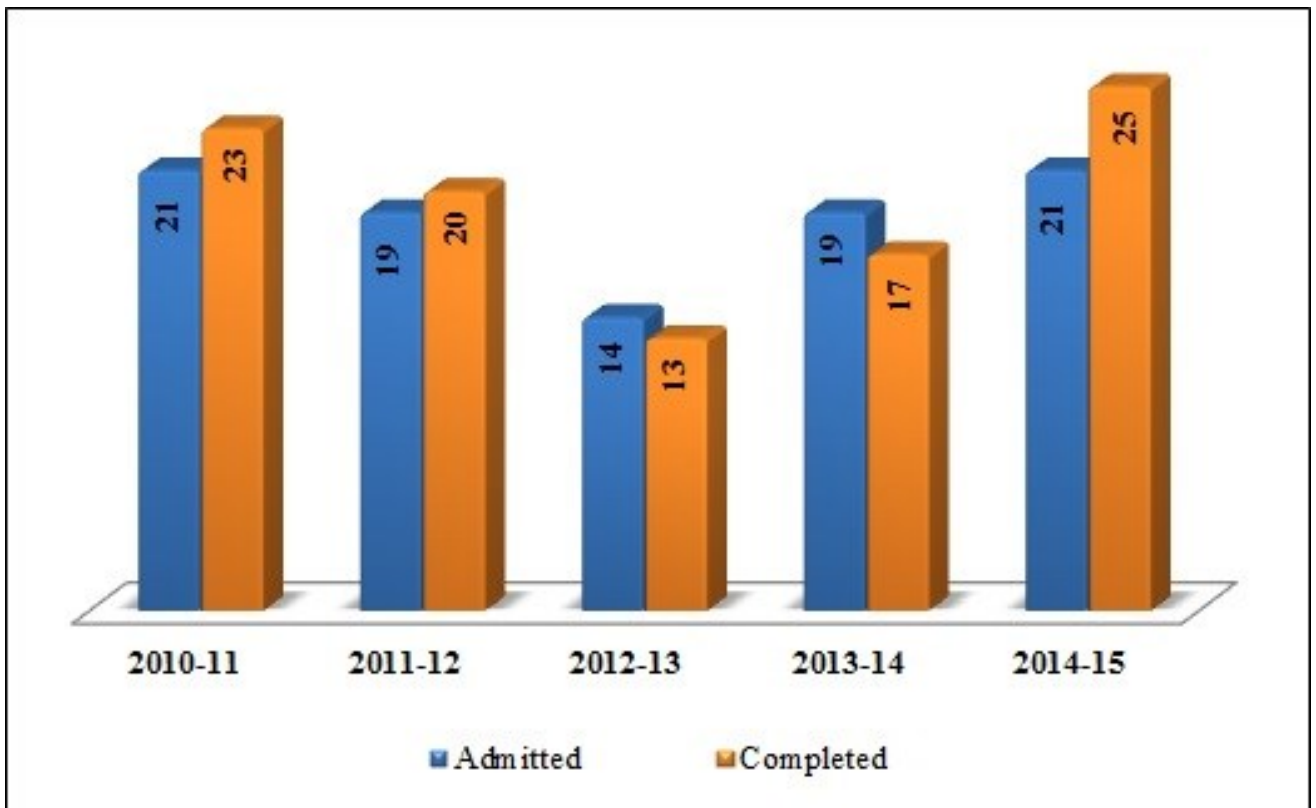
63 Day Pre-Adolescent Program

The Commitment Program has a rated capacity of 10 boys, ages 8 to 14. This commitment program is specially designed to meet the needs of the young male offenders.

Boys committed to the 63 day program receive group counseling, recreational art therapy and individual therapy as needed by mental health staff. Cognitive Behavioral strategies are used to assist the minors in developing life skills to be applied in real world settings.

In the commitment program, boys are also eligible to earn furloughs home to aid in their transition back into the family home environment.

Chart Representing Past Five Fiscal Years

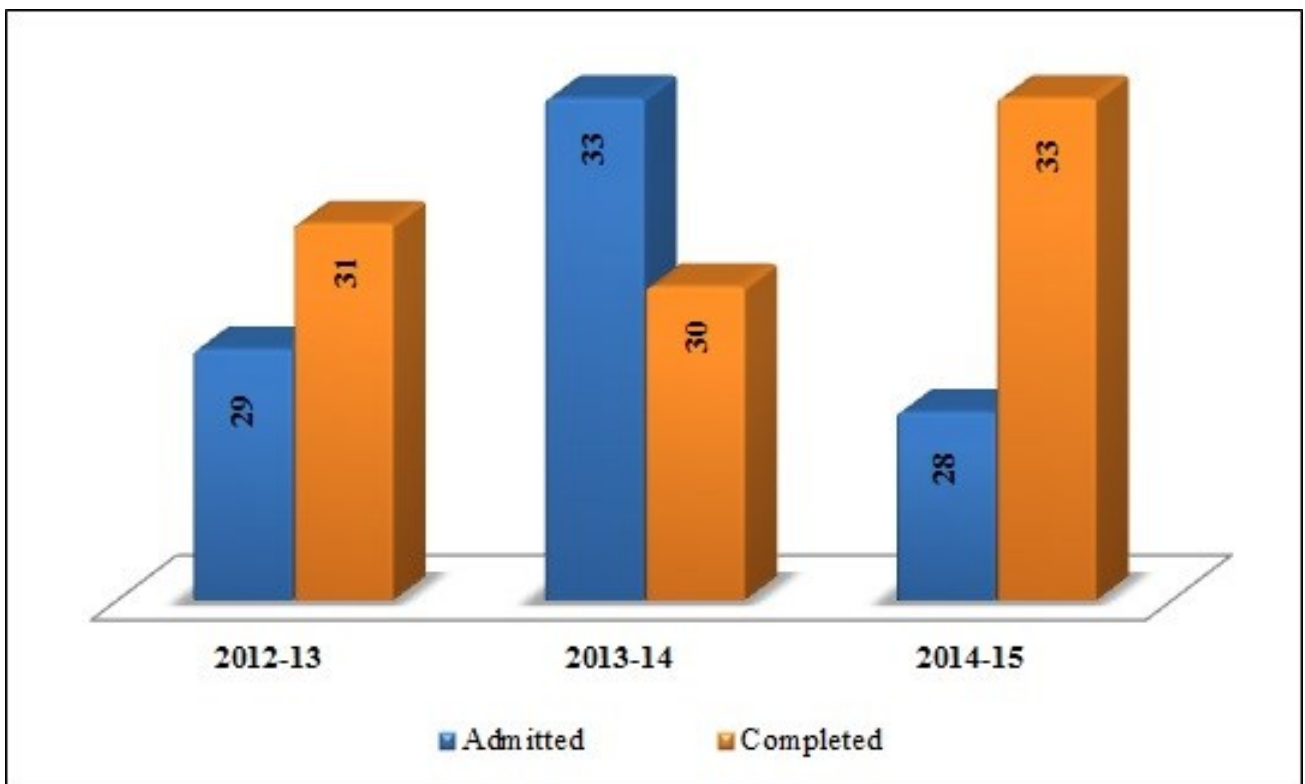


New Horizons Program

This is a collaborative effort of the Fresno County Probation Department and we contract with Mental Health Systems of San Diego. The program was implemented in March 2009. The program serves 30 males in a residential dual-diagnosis treatment program. Each minor is committed to the program through a juvenile court order for 365 days of in patient services. Upon release, minors will receive 90 days of after care services.

Intensive treatment services provided in a highly structured setting is part of the New Horizons Program. Services include but are not limited to school (including academic and vocational evaluations), anger management, life skills, parenting class, medical treatment, psychiatric evaluations, toxicology screenings, substance abuse treatment and 12 step meetings, case management, discharge planning, and supervision. Each resident has an individualized Inter-agency treatment plan, including a discharge/ community reintegration plan. The program also requires a high degree of academic work. Individual therapy with a combination of therapeutic intervention and education, coupled with parent and family participation have created a program that is a model for other probation departments.

Chart Representing Past Three Fiscal Years

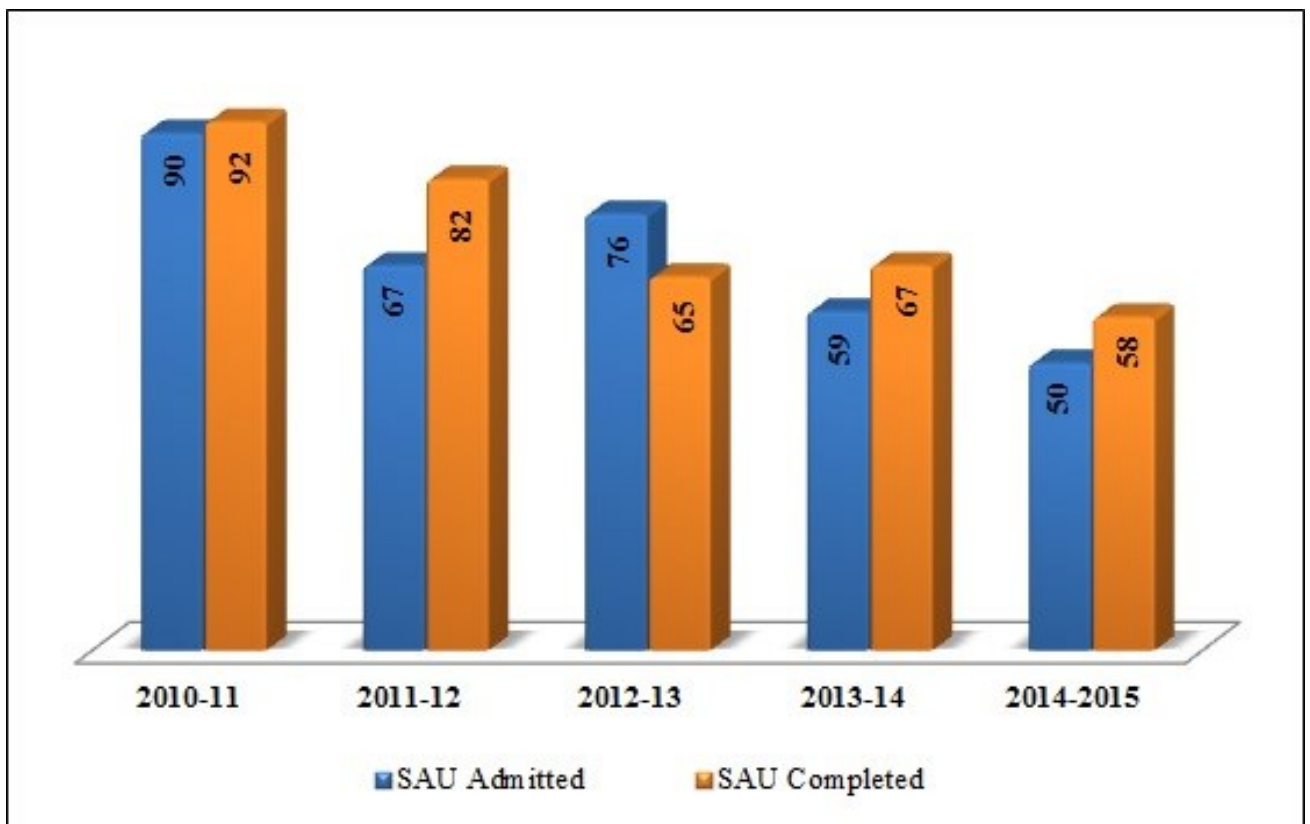


Floyd Farrow Substance Abuse Unit

This is a collaborative effort of the Fresno County Probation Department, Fresno County Department of Children and Family Services, and Mental Health Systems of San Diego. This program was implemented in November 2000. The Substance Abuse program serves 30 males and 10 females in residential dual-diagnosis treatment program. Minors referred to the program are identified as having both substance abuse and mental health related issues. Each minor is committed to the program through a juvenile court order for up to 180-day maximum commitment after an assessment has been completed. After completing the program, the minor will attend Aftercare for up to six months.

Intensive drug education and intervention counseling is part of the SAU program, with weekly family therapy sessions to aid in the recognition of addictive behaviors and triggers. The program also requires a high degree of academic work related to self discovery of thinking patterns linked to their addiction problems. The combination of therapeutic intervention and education, coupled with parent and family participation have created a program that is thought to be the largest in the state for substance abuse treatment and a model for other Probation Departments.

Chart Representing Past Five Fiscal Years





VICTIM ADVOCACY



James Rowland Crime Victim Assistance Center

The Crime Victim Assistance Center, established in 1975, and dedicated to former Chief Probation Officer James Rowland, provides direct services to victims of violent crime. Fresno County was the first Probation Department in California to establish a center providing services to victims of crime under the direction of probation. The program is mandated pursuant to California Penal Code Section 13835 and is funded by monies from the penalty assessment fund. The Crime Victim Assistance Center provides comprehensive services to victims of all crime types. This includes the provision of thirteen mandatory and eleven optional services including: crisis intervention, emergency assistance, relocation services, Victim Impact Statements, court support, and referrals to counseling and other services. Of great importance is assisting victims in filing claims with the state for reimbursement of expenses incurred as the result of a crime. Due to the Advocates' efforts, victims of violent crime in Fresno County are reimbursed more than one million dollars each year from the state's Victims of Crime Program.

Presently the Victim Advocates are divided into six specialized team: Elder/Dependent Adult, Domestic Violence, Violent Offender Intensive Supervision Endeavour (VOISE), Sexual Assault/Child Abuse; Victims of Juvenile Offenders; and Homicide/Kidnapping/Robbery/Violent Crimes. In addition to the main office located in downtown Fresno there are three satellite offices. The Elder Abuse/Dependent Adult team are housed at the Senior Resource Center in central Fresno. The advocates works closely with other law enforcement agencies and Adult Protective Services in a multidisciplinary team approach to address the issues of elder abuse.

The Victim Advocate assigned to the victims of juvenile offenders is housed at the Juvenile Justice Campus where collaboration with the Courts, the District Attorney, and the supervising Deputy Probation Officer is readily accessible. The Victim Advocate assigned to VOISE is housed at the Domestic Violence Supervision Unit in collaboration with a full-time Deputy Probation Officer in reaching out to victims of high-risk, violent, Domestic Violence related cases in which the offender is assigned to the VOISE supervision caseload. The Victim Advocate and the Deputy Probation Officer collaborate in contacting and serving victims.

On any given day, Advocates are required to: interpret and explain program laws, rules, and regulations and orient participants to the criminal justice system; conduct program educational presentations to law enforcement, schools, community agencies, and other criminal justice system agencies; act as a liaison between Department and law enforcement, courts and community agencies; prepare correspondence, memoranda, and reports for the Courts; interview victims and witnesses of all types of crimes to obtain factual information needed to determine eligibility for participation in the Assistance Program; advise victims of available services and assist them in obtaining appropriate services.

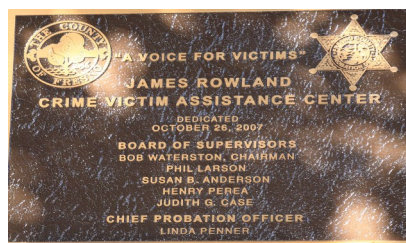
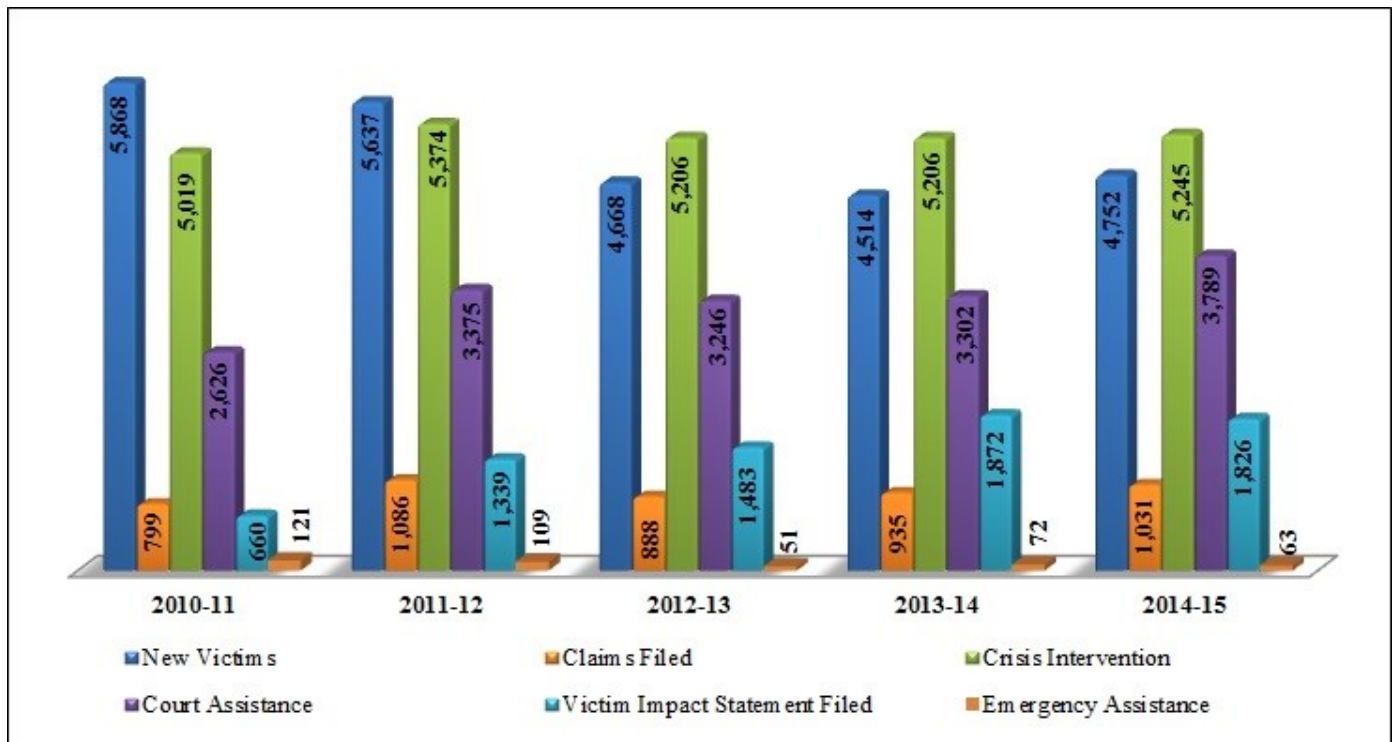
The Center further offers a safe waiting area for victims/witnesses awaiting court hearings. Victim Advocates aid victims and witnesses in overcoming the effects of crime and empower them to understand and participate in the criminal justice system. Advocates are dedicated to providing professional and personalized assistance to victims of Fresno County.

Crime Victim/Witness Statistics

7/01/2014 - 6/30/2015

New Victims	4,752
Claims Filed	1,031
Crisis Intervention	5,245
Court Assistance	3,789
Victim Impact Statement Filed	1,826
Emergency Assistance	63

Chart Representing Past Five Fiscal years





RESOURCE MANAGEMENT



Back side of Half Dome - Yosemite (Photo by Dolly Quan)

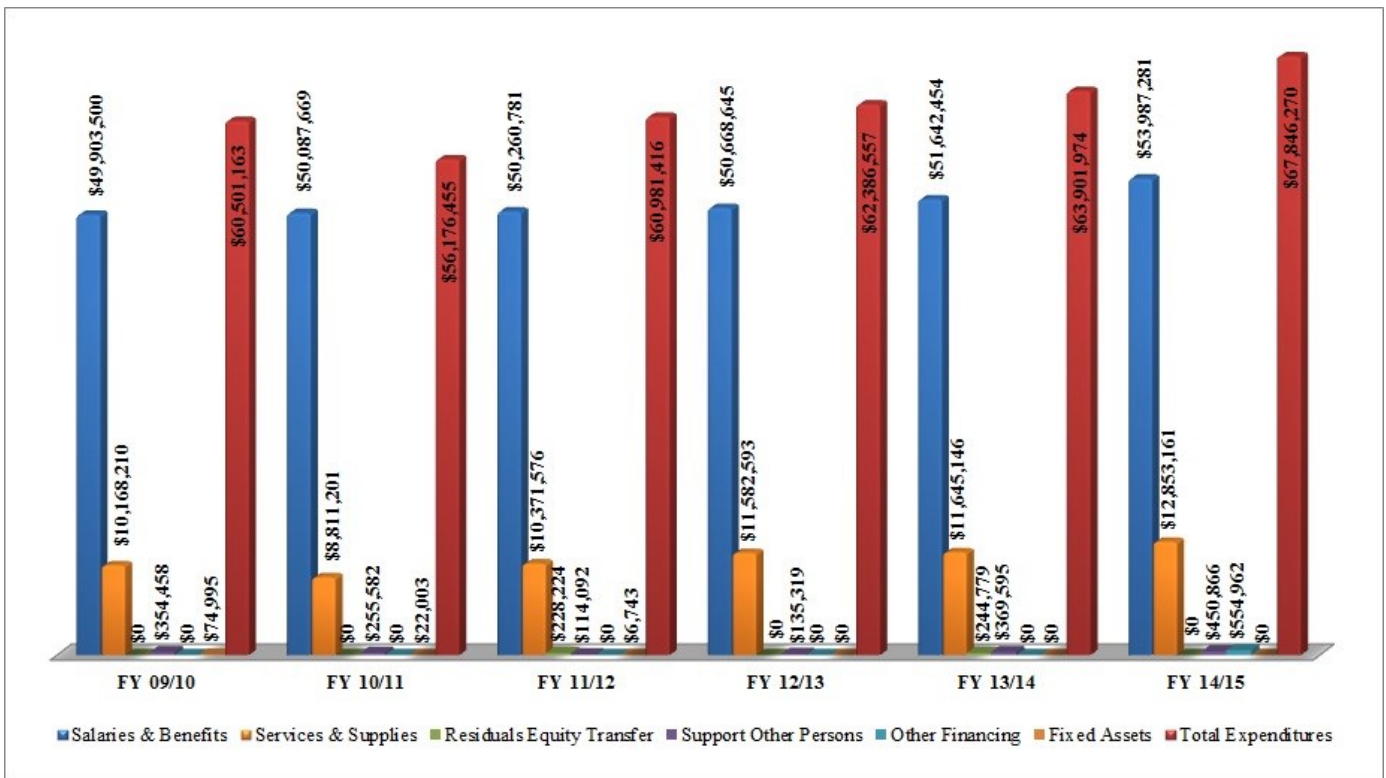
Fiscal	FY 09/10	FY 10/11	FY 11/12	FY 12/13	FY 13/14	FY 14/15
Salaries & Benefits	\$49,903,500	\$50,087,669	\$50,260,781	\$50,668,645	\$51,642,454	\$53,987,281
Services & Supplies	\$10,168,210	\$8,811,201	\$10,371,576	\$11,582,593	\$11,645,146	\$12,853,161
Residual Equity Transfers	\$0	\$0	\$228,224	\$0	\$244,779	\$0
Support Other Persons	\$354,458	\$255,582	\$114,092	\$135,319	\$369,595	\$450,866
Other Financing	\$0	\$0	\$0	\$0	\$0	\$554,962
Fixed Assets	\$74,995	\$22,003	\$6,743	\$0	\$0	\$0
Total Expenditures	\$60,501,163	\$59,176,455	\$60,981,416	\$62,386,557	\$63,901,974	\$67,846,270
Intrafund	\$1,650,272	\$758,217	\$1,235,166	\$981,142	\$771,709	\$855,826
Federal Revenue	\$2,799,582	\$2,750,019	\$3,433,569	\$2,812,784	\$1,419,019	\$1,553,226
State Revenues	\$22,638,663	\$24,118,553	\$28,265,389	\$20,640,903	\$18,834,821	\$17,154,913
Fees, Fines & Forfeitures, Charges for Services	\$4,895,020	\$4,229,134	\$3,612,933	\$2,660,134	\$2,878,482	\$2,579,835
Miscellaneous	\$1,642,420	\$2,213,695	\$1,163,312	\$388,856	\$27,063	\$150,339
Special Transfer Funds	\$211	\$0	\$1,848,715	\$12,242,859	\$18,730,094	\$22,288,543
Total Revenues	\$33,626,168	\$34,206,618	\$39,559,084	\$39,727,018	\$42,761,188	\$44,582,682

Net County Cost	\$26,874,743	\$25,106,837	\$21,422,332	\$22,659,539	\$21,140,786	\$23,263,588
%	44%	42%	35%	36%	33%	34%

All fiscal years reflect actual expenditures & revenues

Personnel	FY 09/10	FY 10/11	FY 11/12	FY 12/13	FY 13/14	FY 14/15
Deputy Probation Officer I/ II/III/IV	121	119	139	141	159	176
Juvenile Correctional Officer I/II and Sr.	228	228	228	228	226	236
All Other Classifications	165	165	177	177	187	200
Total Permanent Positions	514	512	544	546	572	612

Chart Representing Past Five Fiscal Years



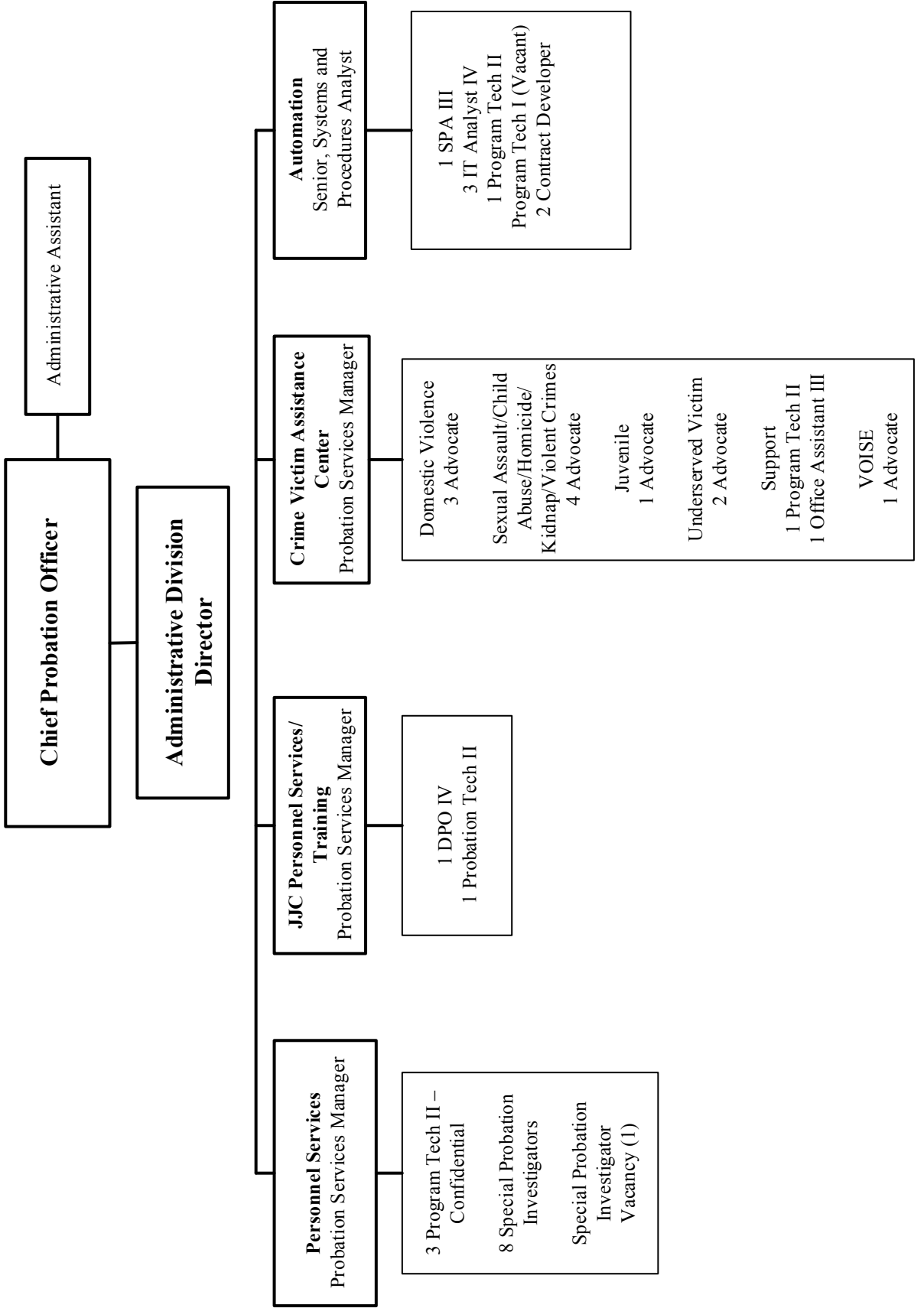


ORGANIZATIONAL CHARTS

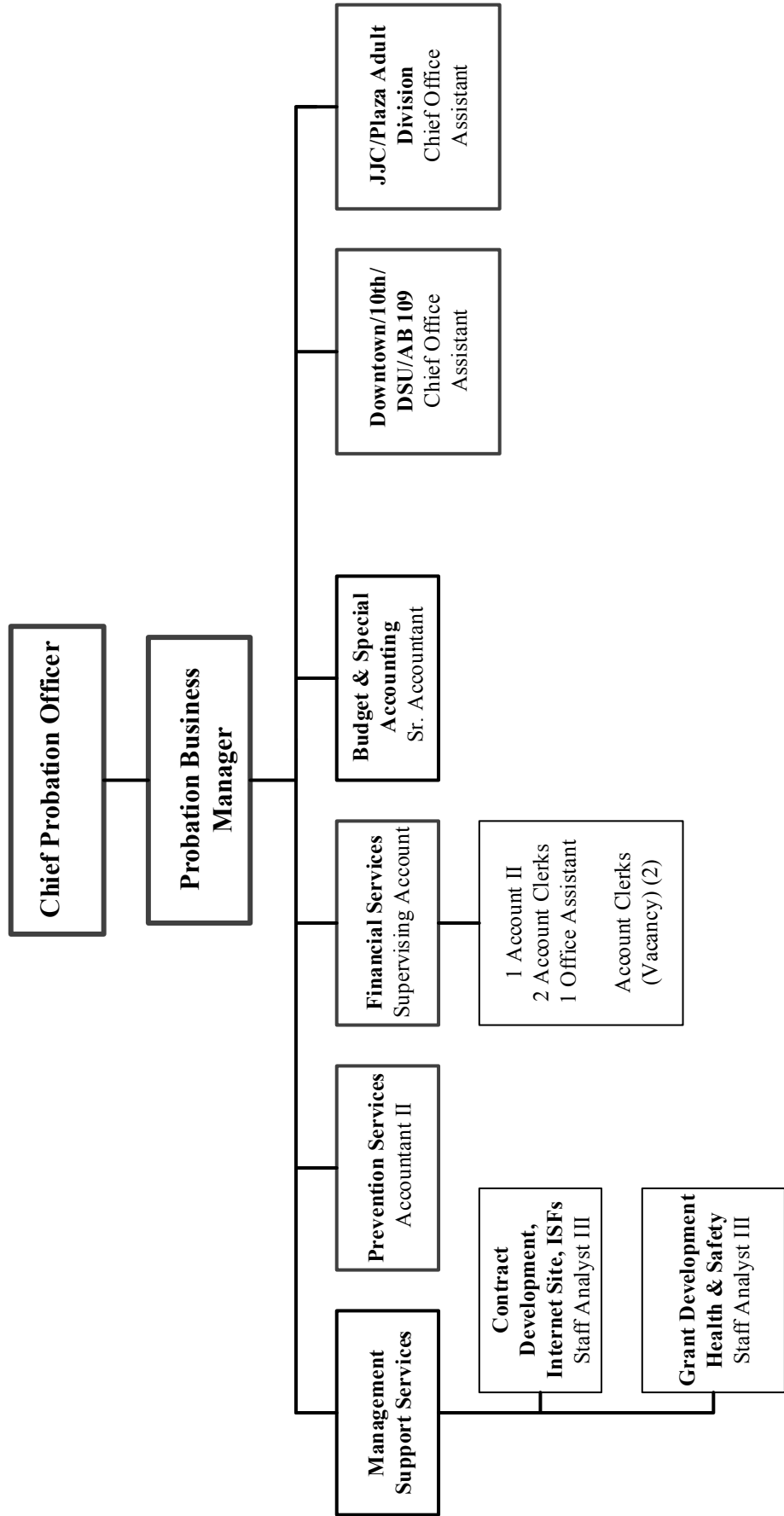


Merced River - Yosemite (Photo by Dolly Quan)

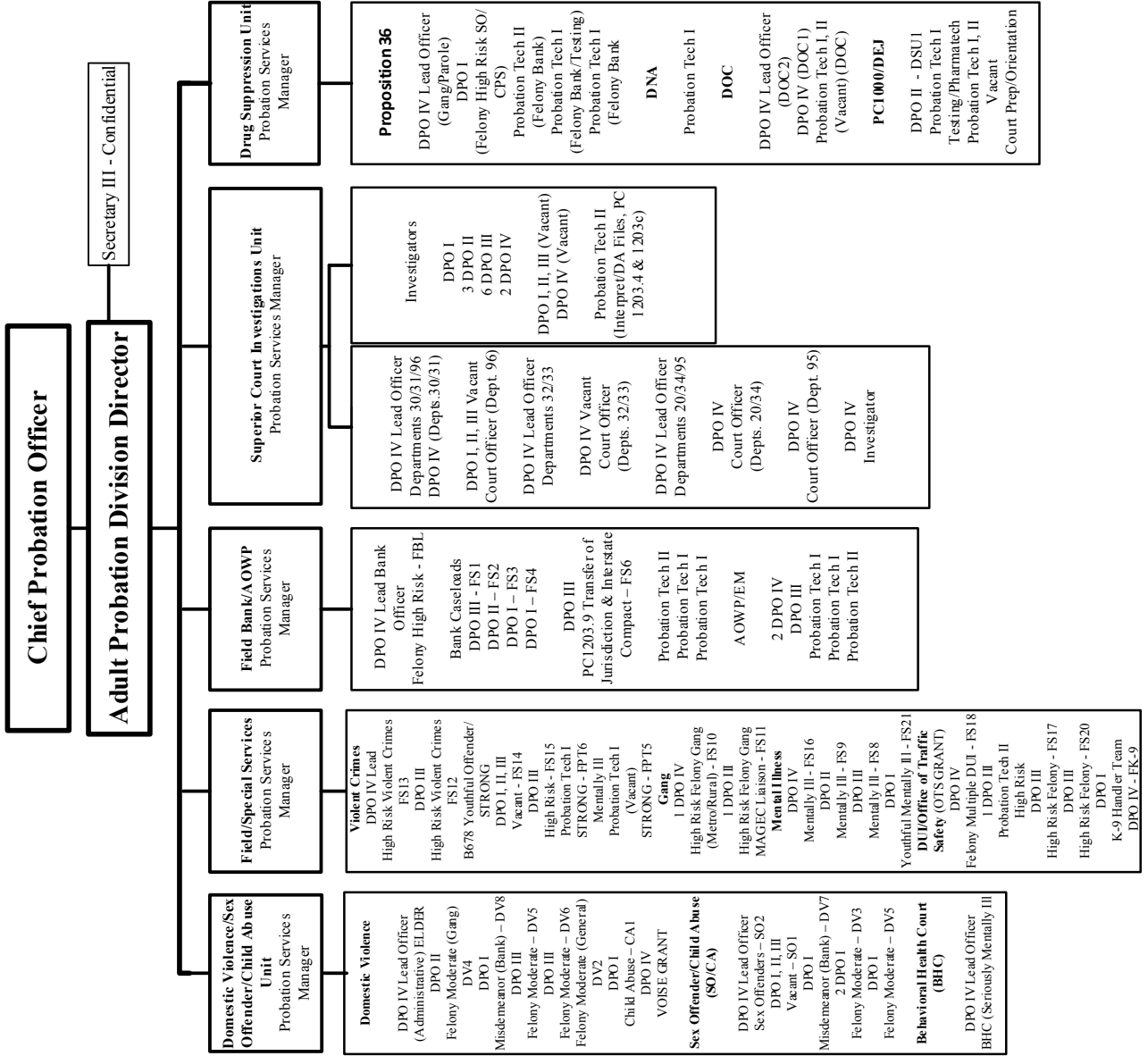
PROBATION ADMINISTRATIVE DIVISION



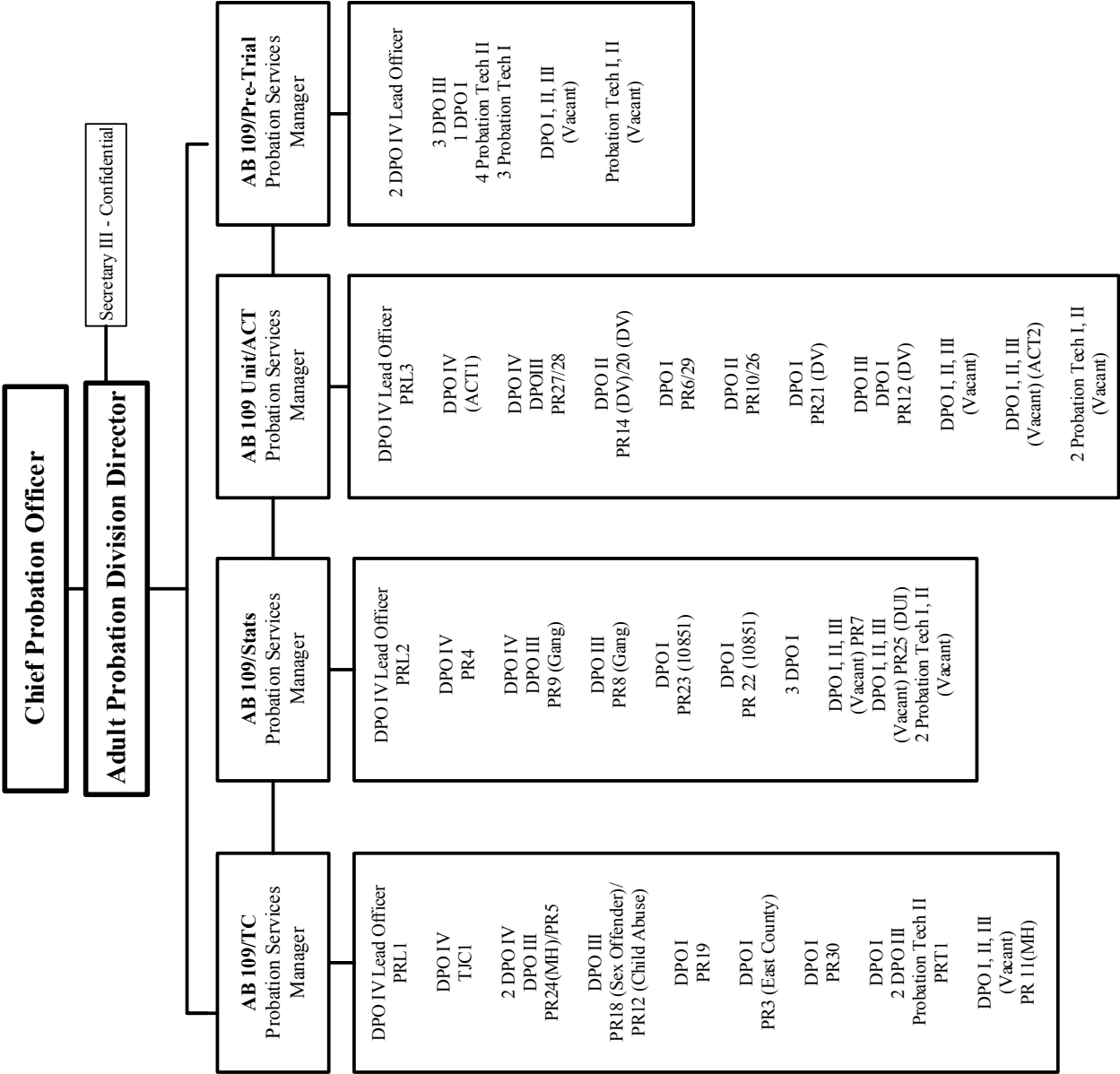
FINANCE AND SUPPORT TEAM



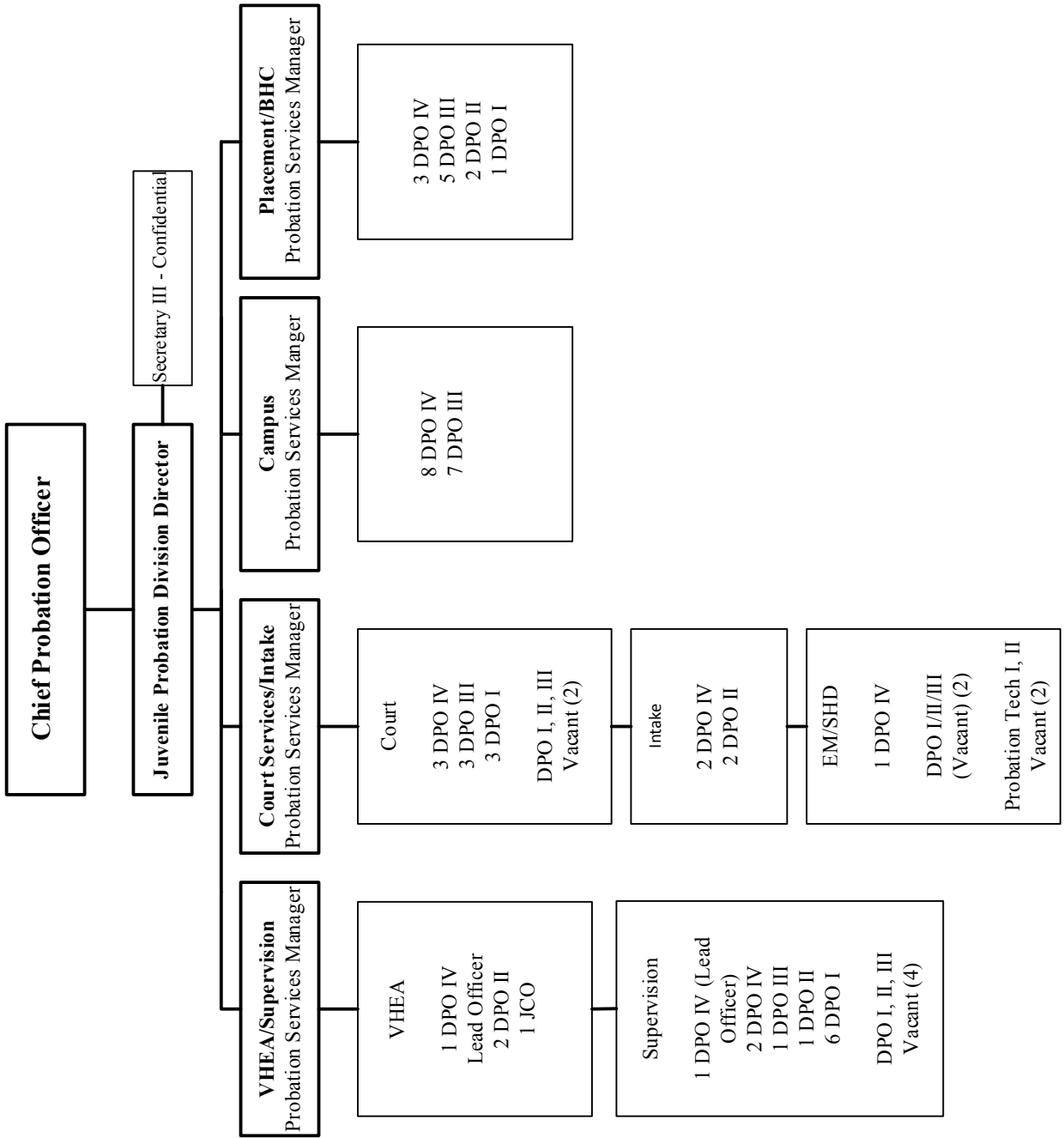
ADULT PROBATION SERVICES DIVISION



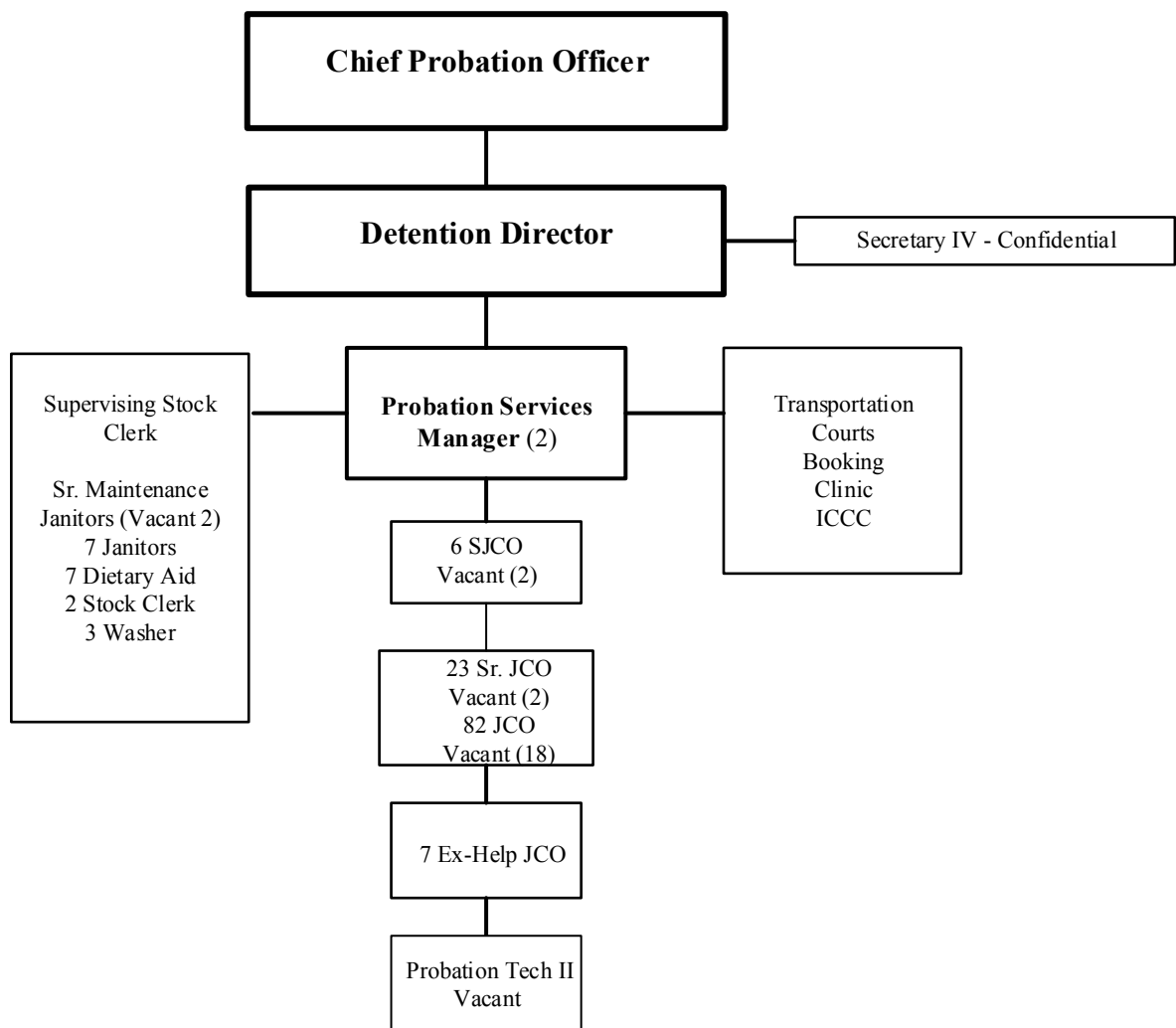
ADULT PROBATION SERVICES DIVISION



JUVENILE PROBATION SERVICES



JUVENILE JUSTICE CAMPUS - DETENTION



JUVENILE JUSTICE CAMPUS - COMMITMENT

