

AB 109
6-MONTH SUMMARY
REPORT

OCTOBER 1, 2011–MARCH 31, 2012

DRAFT
(APRIL 23, 2012)

OWEN RESEARCH & EVALUATION
FRESNO, CALIFORNIA

SUMMARY

I. AB 109 Caseload: Probation

During the six-month period (October 1, 2011 to March 31, 2012), a total of 1,525 AB 109 offender cases were recorded in the Fresno County Probation Database.

- Post-Release Community Supervision (PRCS) offenders: 998
- County Jail offenders (CJOs): 373
- Split-Sentence offenders (Split): 154
- Monthly average: PRCS 166; CJOs 62; Split 26

II. Warrants for PRCS Population

During the six-month period (October 1, 2011 to March 31, 2012), a total of 208 probation warrants were issued for 187 PRCS offenders.

- Out of contact: 143
- Out of contact/Deported: 24
- New misdemeanor offense: 5
- New felony offense: 16
- Technical violation: 19
(*Note: Information missing for one warrant.*)
- 17 offenders were issued warrants twice, and two offenders were issued warrants three times during the period
- (*Note: Probation warrants do not include additional filings of new criminal charges not yet adjudicated*)

III. Flash Incarceration

During the six-month period (October 1, 2011 to March 31, 2012), a total of 30 flash incarcerations were utilized for 28 offenders.

- High risk: 23
- Moderate risk: 5
- Low risk: 2
- Flash incarceration was used once for 26 offenders and twice for two offenders.

IV. PRCS: Probation Caseload

- Average caseload per officer: 60 (range 44–72)

V. PRCS Offender Characteristics

- Gender
 - Male: 901 (90%)
 - Female: 97 (10%)
- Race/Ethnicity
 - African American: 168 (17%)
 - Caucasian: 220 (22%)

- Hispanic: 547 (55%)
- Age at release from prison
 - Average: 34.5
 - Median: 32.5
- Top six residential zip codes
 - 93706/93702/93727/93722/93703/93705
- Top five offense codes
 - HS 11377(a): Possession of drugs
 - VC 10851(a): Auto theft
 - PC 666: Prior convictions of theft
 - PC 459/460(b): Burglary
 - HS 11350(a): Controlled substance possession

VI. County Jail Offender Characteristics

- Gender
 - Male: 283 (76%)
 - Female: 90 (24%)
- Race/Ethnicity
 - African American: 42 (11%)
 - Caucasian: 102 (27%)
 - Hispanic: 205 (55%)
- Age at which sentenced
 - Average: 32.9
 - Median: 31.0
- Jail time
 - Average: 21 months
 - Median/Mode: 16 months
- Top five offense codes
 - HS 11377(a): Possession of drugs
 - PC 459/460(b): Burglary
 - VC 10851(a): Auto theft
 - PC 496(a): Receiving stolen property
 - VC 23152(b): DUI

VII. Split-Sentence Offender Characteristics

- Gender
 - Male: 118 (77%)
 - Female: 36 (23%)
- Race/Ethnicity
 - African American: 24 (15%)
 - Caucasian: 41 (27%)
 - Hispanic: 74 (48%)
- Age at which sentenced
 - Average: 35
 - Median: 32

- Sentence
 - Average jail time: 15 months
 - Average length of jail and MSR: 22 months
- Top five offense codes
 - PC 459/460(b): Burglary
 - HS 11377(a): Possession of drugs
 - VC 10851(a): Auto theft
 - PC 496(a): Receiving stolen property
 - HS 11350(a): Controlled substance possession

VIII. Program Referral

During the six-month period (October 1, 2011 to March 31, 2012), a total of 1,503 referrals were made for 562 offenders.

IX. Adult Compliance Team (ACT) Activities

From October 21, 2011, to January 31, 2012, the ACT officers provided a total of 838 services.

- Activities
 - Compliance checks: 129
 - Probation contacts: 113
 - Attempted arrests: 58
 - Address verification: 46
- Arrests
 - Attempts made: 58
 - Arrests' made: 18
- Most frequently contacted zip codes
 - 93702/93706/93701/93612/93727

X. Information from the Court Data

- As of March 31, 2012, five Split-Sentence offenders had violated their MSR conditions.
- As of February 22, 2012, 78 PRCS offenders had petition of revocation hearings. The total number of hearings was 142 with an average per offender of 1.8.
- During the six-month period (October 1, 2011 to March 31, 2012), a total of 532 County Jail offender cases were recorded in the Fresno County Court Database.
- During the six-month period (October 1, 2011 to March 31, 2012), a total of 225 Split-Sentence offender cases were recorded in the Fresno County Court Database.

Appendix I: Reasons for Flash Incarceration

Appendix II: Top Six Zip Codes for PRCS Offenders' Residence

Appendix III: List of Offender Charges and Classification

Appendix IV: List of Program Providers

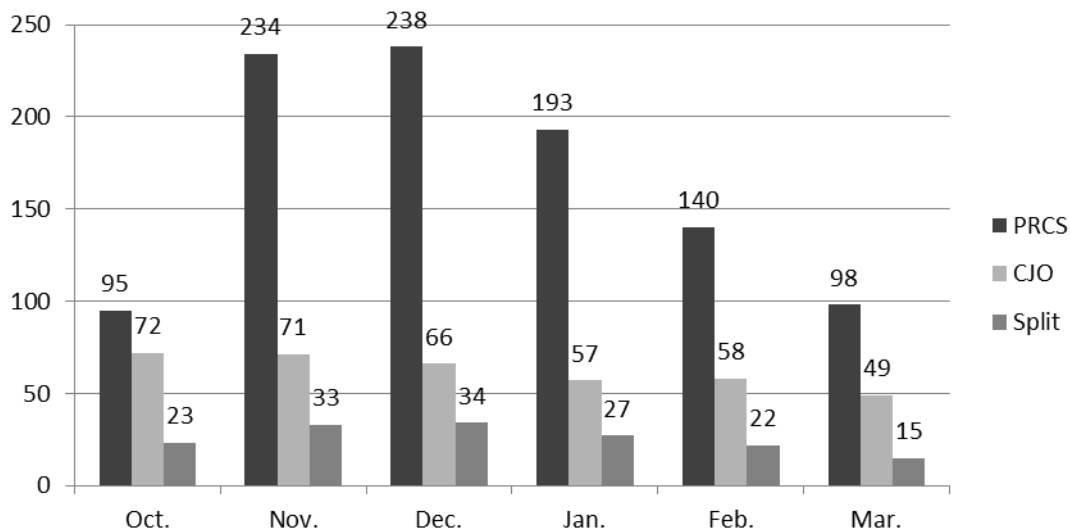
Appendix V: Contact and Arrest Locations in the Fresno/Clovis Metro Area

I. AB 109 CASELOAD: PROBATION

During the six-month period (October 1, 2011 to March 31, 2012), a total of 1,525 AB 109 offender cases were recorded in the Fresno County Probation Database. The Post-Release Community Supervision (PRCS) offenders accounted for 65.4% ($n = 998$), the County Jail offenders (CJOs) were 24.5% ($n = 373$), and the Split-Sentence offenders (Split) were 10.1% ($n = 154$). The monthly average was 166 for PRCS, 62 for CJOs, and 26 for Split.

Figure 2 shows that in November indicated that the actual caseload ($N = 234$) was 263% higher than the projection ($N = 89$). The trend indicates that the gap has been subsequently declining.

Figure 1: Monthly Caseload by Category ($N = 1,525$)

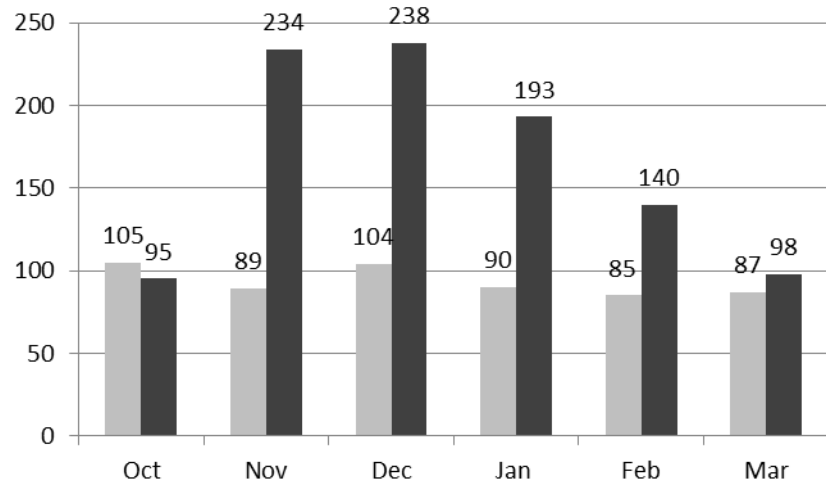


Note: PRCS = month released from prison, CJO = sentenced month, Split = sentenced month

Figure 2: Comparison Between the CDCR Projection and the Actual Caseload (PRCS)

Table 1: Warrant Reasons (N = 207)

Category	Number (%)
Out of Contact	143 (69.1)
Out of Contact/Deported	24 (11.6)
New Misdemeanor Offense	5 (2.4)
New Felony Offense	16 (7.7)
Technical Violation	19 (9.2)



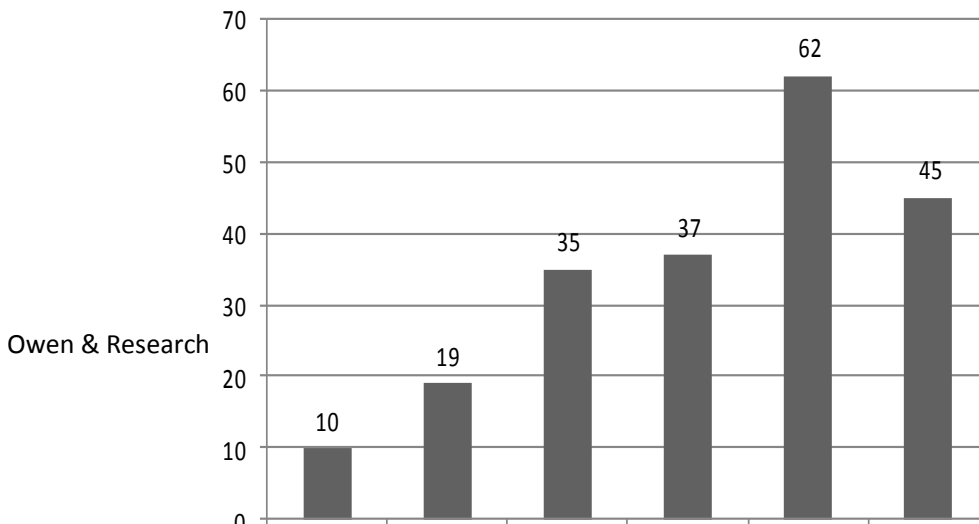
II. WARRANTS FOR PRCS POPULATION

A total of 208 probation warrants were issued for PRCS offenders during the six-month period with a monthly average of 34.7. Among those, 69.1% were for “Out of Contact,” followed by 11.6% for “Out of Contact/Deported,” 9.2% for “Technical Violation,” 7.7% for “New Felony Offense,” and 2.4% for “New Misdemeanor Offense.”

Note that 17 offenders were issued warrants twice, and two offenders were issued warrants three times during the period.

Note: Information missing for one warrant.

Figure 3: Warrants Issued by Month (N = 208)



III. FLASH INCARCERATION

During the six-month period (October 1, 2011 to March 31, 2012), a total of 30 flash incarcerations were utilized for 28 offenders. According to the very limited data re: risk assessment, 76.7% of offenders were indicated as high risk, 16.7% were moderate risk, and 6.7% were low risk.

Figure 4: Flash Incarceration by Month (N = 30)

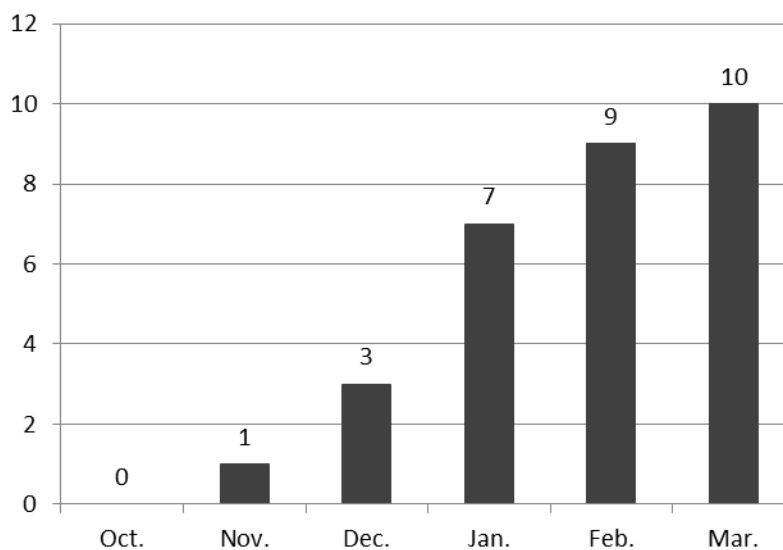


Table 2: Risk Level of Offenders (N = 30)

Risk Level	Number	Percent
High	23	76.7
Moderate	5	16.7

Low	2	6.7
-----	---	-----

Notes:

1. The offenders who received flash incarceration twice were both high-risk offenders.
2. Refer to Appendix I for the violation reasons.

IV. PRCS: PROBATION CASELOAD

Fourteen probation officers were assigned to PRCS offenders. The average caseload for an officer was 60, ranging from 44 to 72 as of March 31, 2012.

Table 3: PRCS Caseload by Officer as of March 31, 2012

Category		Number	Notes
Probation Officer	1	72	Total: 839 Range: 44–72 Average: 60
	2	66	
	3	72	
	4	63	
	5	61	
	6	66	
	7	67	
	8	47	
	9	53	
	10	66	
	11	69	
	12	47	
	13	46	
	14	44	
PRCS/MSR Warrant		127	
DV 8		1	
PRL		3	
Post-Release Pending Case		5	
No Officer Assigned		23	
Total		998	

V. PRCS OFFENDER CHARACTERISTICS

The average age of the PRCS offenders was 34.54 with a median of 32.5. The youngest offender was 19 and the oldest was 76. A majority was Hispanic (55%), followed by Caucasian (22%) and African American (17%). Males accounted for 90% of the total.

Table 4: Characteristics of the PRCS Offenders (N = 998)

Category	Number (%)	Notes
Age at Release From Prison		
30 and Under	439 (44%)	Mean: 34.54
31–40	291 (29%)	Median: 32.5
41–50	192 (19%)	Range: 19–76
51–60	64 (6%)	
61 and Older	12 (2%)	
Race/Ethnicity		
African American	168 (17%)	
Caucasian	220 (22%)	
Hispanic	547 (55%)	
Other	63 (6%)	
Gender		
Female	97 (10%)	
Male	901 (90%)	

Table 5: Top Six Zip Codes

Zip Code	Number
93706	97
93702	96
93727	70
93722	64
93703	60
93705	59

Of the 998 PRCS offenders, 71% ($n = 713$) gave Fresno as the city of their home address. Other resident cities were Clovis ($n = 38$), Sanger ($n = 23$), and Selma ($n = 23$).

The top six zip codes of offender residences were 93706 ($n = 97$), 93702 ($n = 96$), 93727 ($n = 70$), 93722 ($n = 64$), 93703 ($n = 60$), and 93705 ($n = 59$).

About 38% of the offenders ($n = 380$) gave Fresno as their birthplace.

Note: Refer to Appendix II for a map of these areas.

Table 6: Top Five Offense Codes

Penal Code	Number
HS 11377(a): Possession of Drugs	108
VC 10851(a): Auto Theft	69
PC 666: Prior Convictions of Theft	57
PC 459/460(b): Burglary	50
HS 11350(a): Controlled Substance Possession	46

The top five charges for which the PRCS offenders had been sentenced to CDCR include: HS 11377(a): Possession of drugs ($n = 108$), VC 10851(a): Auto theft ($n = 69$), PC 666: Prior convictions of theft ($n = 57$), PC 459/460(b): Burglary ($n = 50$), and HS 11350(a): Controlled substance possession ($n = 46$).

These five charges ($n = 330$) constituted 33% of the total PRCS cases.

PRCS offenders' original (CDCR) offenses were classified into five categories. More than one third (37.9%) of offenses were property-related. Crime against persons (25.1%) and drug-related crime (24.5%) accounted for nearly half of the total. Refer to Appendix III for more detailed information.

Table 7: Five Offense Categories (N = 995)

Category	Number (%)	Top Two Charges Within the Category
Person	249 (25.1%)	PC 273.5(a): Battery Cohabiting Persons = 45 PC 12021(a)(1): Felon With Firearm = 42
Drugs	244 (24.5%)	HS 11377(a): Possession of Drugs = 108 HS 11350(a): Controlled Substance Possession = 46
Property	377 (37.9%)	VC 10851(a): Auto theft = 69 PC 459/460(b): Burglary = 50
Miscellaneous	89 (8.9%)	VC 2800.2(a): Evasion of Police = 28 PC 69: Resisting Officer = 16
DUI	36 (3.6%)	VC 23152(b): DUI = 25 VC 23152(a): DUI = 5

Notes:

1. Information missing for three cases.
2. The coding used here was developed by the National Institute of Justice (NIJ) for the Arrestee Drug Abuse Monitoring (ADAM) program.
3. Refer to Appendix III for more detailed information.

VI. COUNTY JAIL OFFENDER CHARACTERISTICS

The average age of the County Jail offenders was 32.93 with a median of 31. The youngest offender was 18 and the oldest was 66. A majority was Hispanic (55%), followed by Caucasian (27%) and African American (11%). Males accounted for 76% of the total.

The average offender was sentenced to jail for 21 months, although a majority (60%) received 16 months of jail time. The longest jail time was 120 months, or 10 years.

Table 8: Characteristics of County Jail Offenders (N = 373)

Category	Number (%)	Notes
Age at Which Sentenced		
30 and Under	171 (46%)	Mean: 32.93
31–40	128 (34%)	Median: 31
41–50	54 (14%)	Range: 18–66
51 and Older	20 (6%)	
Race/Ethnicity		
African American	42 (11%)	
Caucasian	102 (27%)	
Hispanic	205 (55%)	
Other	24 (7%)	
Gender		
Female	90 (24%)	
Male	283 (76%)	
Jail Time		
Average	21 months	Median/Mode: 16 months
Range	8–120	

Note: Sentencing information missing for 54 cases.

Table 9: Top Five Offense Codes

Penal Code	Number
HS 11377(a): Possession of Drugs	77
PC 459/460(b): Burglary	40
VC 10851(a): Auto Theft	26
PC 496(a): Receiving Stolen Property	25
VC 23152(b): DUI	17

The top five charges of CJOs were HS 11377(a): Possession of drugs ($n = 77$), PC 459/460(b): Burglary ($n = 40$), VC 10851(a): Auto theft ($n = 26$), PC 496(a): Receiving stolen property ($n = 25$), and VC 23152(b): DUI ($n = 17$).

These five charges ($n = 185$) constituted 49.6% of the total CJO cases.

CJO offenses were classified into five categories. Approximately half (47.2%) of the offenses were property-related followed by drugs (36.5%). The proportion of crime against persons was substantially smaller than that of the PRCS offenders. Refer to Appendix III for more detailed information.

Table 10: Five Offense Categories (N = 373)

Category	Number (%)	Top Two Charges Within the Category
Person	24 (6.4%)	PC 12020(a): Possession of Illegal Knife = 5 PC 273(d)(a): Domestic Violence = 3
Drugs	136 (36.5%)	HS 11377(a): Possession of Drugs = 77 HS 11350(a): Controlled Substance Possession = 19
Property	176 (47.2%)	PC 459/460(b): Burglary = 40 VC 10851(a): Auto Theft = 26
Miscellaneous	19 (5.1%)	PC 69: Resisting Officer = 7 PC 236: False Imprisonment = 3
DUI	18 (4.8%)	VC 23152(b): DUI = 17 VC 23152(a): DUI = 1

Notes:

1. The coding used here was developed by the National Institute of Justice (NIJ) for the Arrestee Drug Abuse Monitoring (ADAM) program.
2. Refer to Appendix III for more detailed information.

VII. SPLIT-SENTENCE OFFENDER CHARACTERISTICS

The average age of the Split-Sentence offenders was 35 with a median of 32. The youngest offender was 19 and the oldest was 66. A majority was Hispanic (48%), followed by Caucasian (27%) and African American (15%). Males accounted for 77% of the total.

An average offender was sentenced to jail for 15 months (median = 12 months). The average length of the total sentence (i.e., time between sentence start to Mandatory Supervised Release (MSR)) was 22 months with a median of 19 months.

Table 11: Characteristics of Split-Sentence Offenders (N = 154)

Category	Number (%)	Notes
Age at Which Sentenced		
30 and Under	62 (40%)	Mean: 34.99
31–40	47 (31%)	Median: 32.0
41–50	30 (19%)	Range: 19–66
51 and Older	15 (10%)	
Race/Ethnicity		
African American	24 (15%)	
Caucasian	41 (27%)	
Hispanic	74 (48%)	
Other	15 (10%)	
Gender		
Female	36 (23%)	
Male	118 (77%)	
Sentence		
Average Jail Time	15 months	Median: 12 months
Average Length From Sentence Start to the End of MSR	22 months	Median: 19 months

Notes:

1. Sentencing Information missing for seven cases.
2. Sentences given by days were calculated as follows: 397 days = 13 months; 1,054 days = 35 months; 464 days = 15 months; 138 days = 4.5 months.

Table 12: Top Five Offense Codes

Penal Code	Number
PC 459/460(b): Burglary	24
HS 11377(a): Possession of Drugs	22
VC 10851(a): Auto Theft	18
PC 496(a): Receiving Stolen Property	10
HS 11350(a): Controlled Substance Possession	8

The top five charges of split-sentence offenders were PC 459/460(b): Burglary ($n = 24$), HS 11377(a): Possession of drugs ($n = 22$), VC 10851(a): Auto theft ($n = 18$), PC 496(a): Receiving stolen property ($n = 10$), and HS 11350(a): Controlled substance possession ($n = 8$).

These five charges ($n = 82$) constituted 53% of the total split-sentence cases.

Split-sentence offenders' offenses were classified into five categories. A majority (61.0%) of offenses was property-related followed by drugs (27.3%). Again, the proportion of crime against persons is substantially smaller than that of the PRCS offenders. Refer to Appendix III for more detailed information.

Table 13: Offense Categories (N = 154)

Category	Number (%)	Top Two Charges Within the Category
Person	9 (5.8%)	PC 12020(a): Possession of Illegal Knife = 3 PC 368(d): Elder Abuse = 2
Drugs	42 (27.3%)	HS 11377(a): Drug Possession = 22 HS 11350(a): Controlled Substance Possession = 8
Property	94 (61.0%)	PC 459/460(b): Burglary = 24 VC 10851(a): Auto Theft = 18
Miscellaneous	5 (3.2%)	PC 69: Resisting Officer = 2
DUI	4 (2.7%)	VC 23152(b): DUI = 3 VC 23152(a): DUI = 1

Notes:

1. The coding used here was developed by the National Institute of Justice (NIJ) for the Arrestee Drug Abuse Monitoring (ADAM) program.
2. Refer to Appendix III for more detailed information.

VIII. PROGRAM REFERRAL

During the six-month period (October 1, 2011 to March 31, 2012), a total of 1,503 referrals were made for 562 offenders. Among those, 536 were PRCS offenders and 17 were Split-Sentence offenders (seven were missing information). The average number of referrals per offender was 2.7 with a median of 2.0. One offender was referred to programs 15 times. Table 14 displays the specific programs to which the referrals were made. Refer to Appendix IV for the list of program providers.

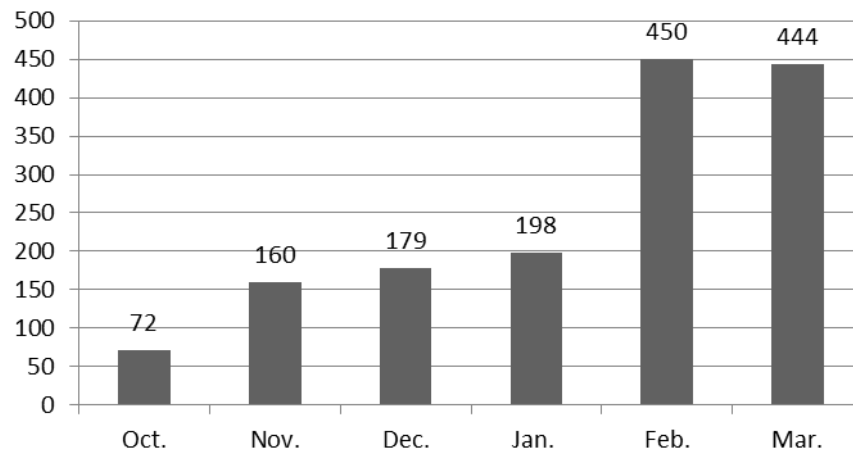
Table 14: Referred Programs (N = 1,503)

Program	Number
AA/NA	33
Adult Non-Residential Services (Outpatient)	1
Ancillary Services	26
Anger Management	1
Batterer's Intervention Program	79
CART	1
Child Abusers Treatment	7
Clothing Assistance	15
Day Reporting Center	6
Drug Testing	707
Education	45
Food Assistance	21
Fresno County Behavioral Health Assessment	74
Fresno County Substance Abuse Assessment	269
Housing Assistance	9
Job Placement Assistance	56
Level II - Outpatient Drug Free	20
Level III - Residential (OTP)	3
Level III - Residential 30 days	3
Level III - Residential 60 Days	4
Medical Outreach Info	2
Men's Residential Services	3
Public Assistance	50
SERI AB109 Mental Health Services Project	39
Sex Offender Treatment	6
Sober Living	8
Tattoo Removal	3
Transportation by P.O.	10
Women's Residential Services	2

Total	1,503
--------------	--------------

The average number of program referrals was 250, but the number substantially increased in February and March 2012.

Figure 5: Program Referral by Month (N = 1,503)



IX. ADULT COMPLIANCE TEAM (ACT) ACTIVITIES

From October 21, 2011, through January 31, 2012, the ACT officers provided a total of 838 services. Approximate one third of services (33.7%) were Compliance Checks ($n = 129$), followed by Probation Contacts ($n = 113$), and Attempted Arrests ($n = 58$). Eighteen arrests were made during the time period. One transport service was made in November, where the offender was transported from Probation to Turning Point for treatment.

Figure 6: Type of Contacts Provided by the ACT (N = 838)

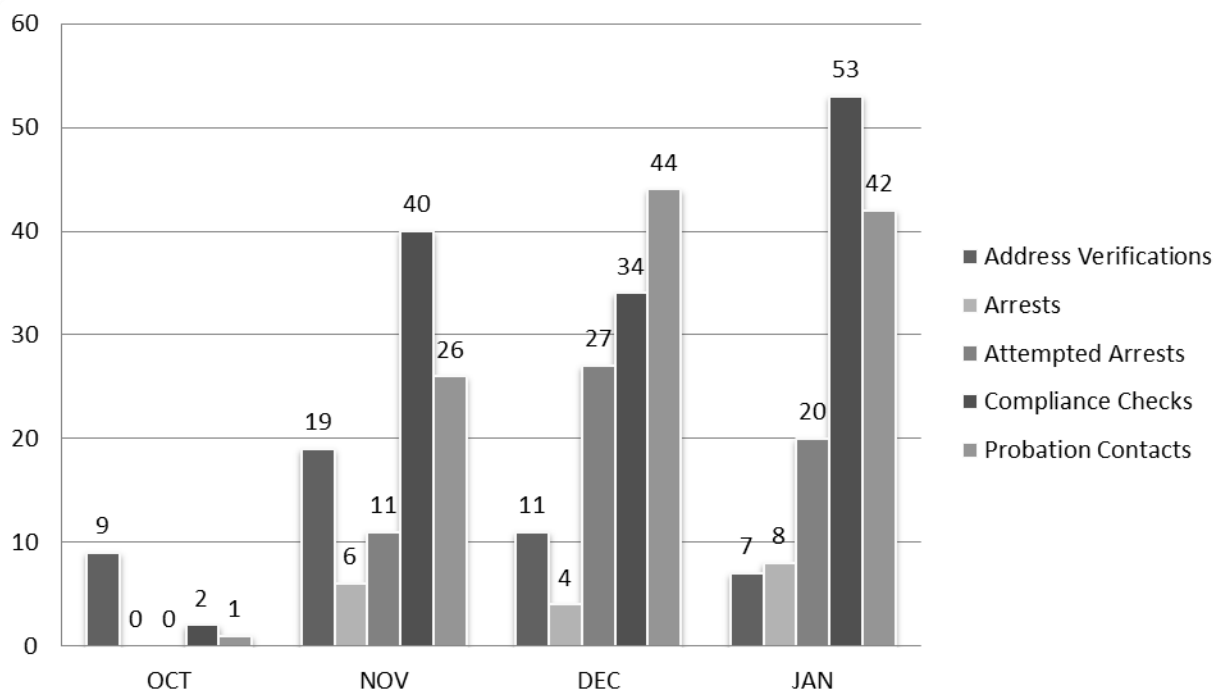
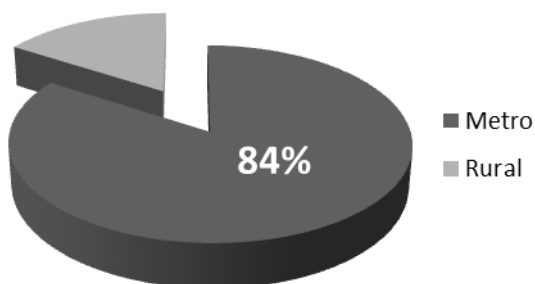


Figure 7: Service Regions (N = 838)



Of 383 contacts, 84%, or 322, were made in the Fresno/Clovis metro area, whereas 16%, or 61 contacts, were made in rural areas. Rural areas include Kingsburg, Selma, Kerman, Orange Cove, and Others. There is no substantial difference in the type of contacts in the metro or rural areas.

Table 15 presents the types of contact activities for Address Verification, Compliance Checks, and Probation Contacts by the team. Nearly half of the Address Verification and Compliance Checks resulted in no contact (49% and 46%, respectively). The reasons why an address could not be verified were no answer (41%), not living at the address (32%), and bad address (27%). As for Compliance Checks, there was no answer in 47% of the cases; offender not living at the address in 27% of the cases, bad addresses in 18% of the cases, and offender was not home in 7.3% of the contacts. Table 16 shows the breakdown of the arrest reasons.

Table 15: Contact Activities

	Contact	No Contact	
Address Verification	23 (51.1%)	22 (48.9%)	A vast majority (88%) of Probation Contacts resulted in failure. In most cases, offenders were not living at the address (36%), there was no answer at the residence (22%), or the offender was not home (21%).
Compliance Checks	69 (53.5%)	59 (46.1%)	
Probation Contacts	14 (12.4%)	99 (87.6%)	

Table 16: Breakdown of the Arrest Reasons

Arrest Reason	Number	Notes
Arrested on State Parole Violation	2	
PC 1203.2	2	Not AB 109 (law enforcement violation of a felony probationer)
Arrested and Booked on a FLASH	3	PC 3454
Arrested and Booked on an Outstanding warrant	5	
Located and Arrested Defendant	1	
Located and Arrested on a PRCS Warrant	1	
MSR From Jail	1	
PC 261.5: Rape	1	
PC 3455: PRCS Violation/Warrant	1	
H&S 11357c, 11364: Drugs	1	
Total	18	

Table 17: Attempted to Arrest

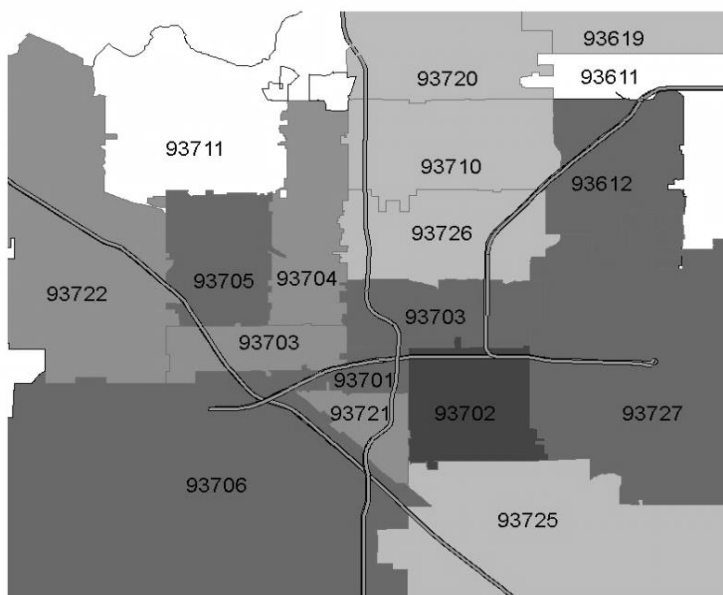
Reasons	Number	Percent
Offender Not Home	8	14.5
Not Living at Address	14	25.5
No Answer	2	3.6
Bad Address	8	14.5
Unable to Locate	23	41.8

Note: Three cases are omitted in the table due to no information or not fitting into one of the categories.

Fifty-eight attempts to arrest were made during the period for 28 offenders. An average attempt by an officer was two, with a range from one to seven. The common reasons for not making an arrest were unable to locate (42%), an offender not living at the address (26%), the offender was not home (26%), the offender was not home (15%), and bad address (15%).

The five zip code areas where the officers most frequently made contacts in the Fresno/Clovis metro area were 93702 ($n = 38$), 93706 ($n = 30$), 93701 ($n = 28$), 93612 ($n = 26$), and 93727 ($n = 26$). Among rural areas, the top three zip code areas where the most contacts were made were 93631 (Kingsburg; $n = 8$), 93772 (Selma; $n = 8$), and 93630 (Kerman; $n = 6$).

Refer to Appendix V for a detailed map.

Figure 8: Fresno/Clovis Metro Area Zip Codes

Zip Code	Number of Contacts
93702	38
93706	30
93701	28
93612	26
93727	26
93703	24
93705	22
93722	18
93728	18
93704	16
93721	16

X. INFORMATION FROM THE COURT DATA

As of March 31, 2012, five Split-Sentence offenders had violated their MSR conditions. Most of them received one year for a local jail term and one year for mandatory supervision. Their original charges were mainly property-related crimes.

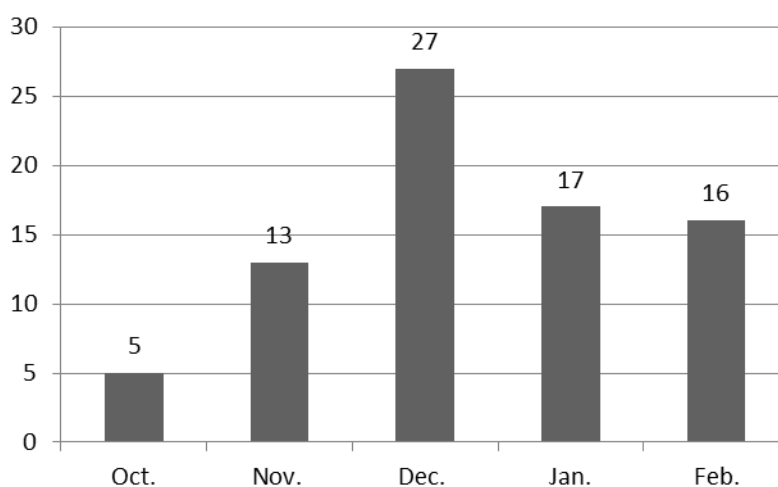
Table 18: Violation of MSR Conditions

	LPO Term (Month)	MSR Term (Month)	Original Charge	Filing Type	Days from Sentenced to Filed
Offender 1	12	12	VC 10851(a): Auto theft PC 32: Accessory	Remand Remand	78
2	12	12	VC 10801: Ownership if an Auto Chop Shop	Remand	145
3	12	12	PC 496(a): Receiving stolen Property	Warrant	100
4	12	16	PC 496(a): Receiving Stolen Property	Warrant	91
5	12	12	PC 459/460(b): Burglary	Warrant	77

Note: information for actual time served in local jail is missing.

As of February 22, 2012, (latest data available) 78 PRCS offenders had petition of revocation hearings. The total number of hearings was 142 with an average per offender of 1.8.

Figure 9: PRCS Hearings by Month (N = 78)



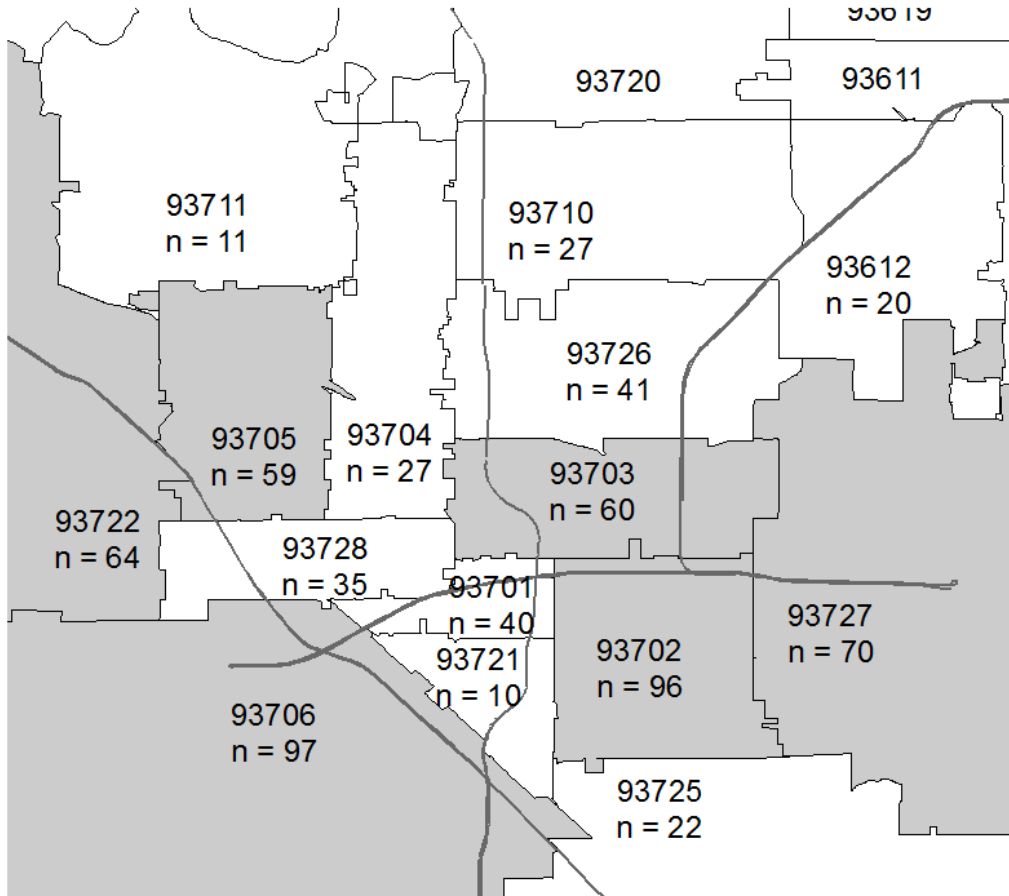
APPENDIX I

Reasons for Flash Incarceration

Reasons	Count
4th positive drug test for the use of meth.	1
5-day flash for continued L/E contacts no contact	1
Arrested for possession of narcotics marijuana, FTA	1
Arrested on few felony H&S11377(a)	1
Assoc. with other gang members	1
Contact with the victim	2
Continued law enforcement contact/failed to report	1
FTA for scheduled appointment with DPO and SERI	1
Absconded from law enforcement; 10-day flash	1
Failed to report/failed to comply w/CPO	1
Drunk in public; history of alcohol abuse	1
Failed OAL-PC415-M and 186.22-F and Force/Violence	1
Failed to test, failed assessment	1
Failure to obey all laws, PC 242 - M	1
Failure to report	1
Fowler PD #12-078; VC 10851-F, PC 496(a)-F, VC 14601	1
FTA for his appointment	1
New arrest for drug possession	1
New law violation	1
New offense/NCF, drinking, drug use, out of contact	1
No test 3/6 & 3/20; not report 3/26-8 day flash	1
Out of contact, failed to enroll in tx	1
Out of contact, new misdemeanor law violation	1
Parlier PD #12-208; cited for PC 148-M; 5-day flash	1
Positive alcohol test; possession of cocaine	1
Possession meth, marijuana, knife, failed inpatient	1
Cited for VC23152(b)	1
Three separate arrests in a period of one month	1
Total	30

APPENDIX II

Top Six Zip Codes for PRCS Offenders' Residence



APPENDIX III

List of Offender Charges and Classification

I. Crime Against Persons

	Description	PRCS	CJO	Split
PC 12020(a)	Possession of illegal knife	23	5	3
PC 12020(a)(1)	Concealed knife	5	0	0
PC 12020(a)(4)	Concealed knife	1	1	0
PC 12021.1	Possession of firearm	1	0	0
PC 12021(a)	Concealed firearm	6	0	0
PC 12021(a)(1)	Felon with firearm	42	1	1
PC 12021(c)(1)	Sawed off shotgun	3	1	0
PC 12021(e)	Felon brandishing firearm	1	0	0
PC 12025(a)(1)	Concealed weapon in car	1	0	0
PC 12025(b)(6)	Concealed weapon	2	0	0
PC 12025(B)(6)(A)	Concealed weapon	1	0	0
PC 12031(a)	Firearm in car	0	1	0
PC 12031(a)(1)	Firearm in car	4	1	1
PC 12031(a)(2)(f)	Firearm in car	2	0	0
PC 12220	Transportation of machine gun	1	0	0
PC 12280(b)	Assault weapons	1	1	0
PC 12316(b)(1)	Illegal ammunition	9	3	1
PC 417(a)(2)	Exhibiting firearm	1	0	0
PC 192(b)	Manslaughter	1	0	0
PC 192(c)	Vehicular manslaughter	1	0	0
PC 243.1	Battery on police	1	1	0
PC 243.4(a)	Battery on police	1	0	0
PC 243.4(d)	Battery with serious injury	1	0	0
PC 243.6(A)	Battery	1	0	0
PC 243(c)(2)	Battery	0	1	0
PC 243(d)	Battery with serious injury	1	0	0
PC 245(a)(1)	Assault with a deadly weapon	5	0	0
PC 246.3(a)	Dangerous discharge of firearm	2	0	0
PC 273.5	Battery cohabitating persons	15	0	0
PC 273.5(a)	Battery cohabitating persons	45	0	0
PC 273.5(e)	Battery cohabitating persons	8	0	0
PC 273.5(e)(1)	Domestic violence	12	0	0
PC 273.5(e)(2)	Domestic violence	1	0	0
PC 273a(a)	Domestic violence	12	0	0
PC 273d(a)	Domestic violence	3	3	0
PC 664/4501.5	Attempted battery	1	0	0
PC 261.5	Rape	0	1	0
PC 261.5(c)	Rape	1	2	0

PC 261.5(d)	Rape, statutory	1	0	1
PC 288(a)	Child molesting	1	0	0
PC 289(e)	Sex with child	1	0	0
PC 290.012	Sex offender registration	3	0	0
PC 290.012(a)	Sex offender registration	2	0	0
PC 290.013(a)	Sex offender registration	4	0	0
PC 290.015(a)	Sex offender registration	1	0	0
PC 290(a)(1)(a)	Sex offender registration	2	0	0
PC 290(a)(1)(d)	Sex offender registration	1	0	0
PC 290(b)	Sex offender registration	5	0	0
PC 4502	Inmate possession of weapon	1	0	0
PC 4502(a)	Inmate possession of weapon	1	0	0
PC 4502(b)	Inmate possession of weapon	2	1	0
PC 452(b)	Inmate possession of weapon	1	0	0
PC 368(b)(1)	Elder abuse	4	0	0
PC 368(d)	Elder abuse	3	1	2
	Total	249	24	9

II. Drugs

	Description	PCRS	CJO	Split
HS 11350	Possession of methamphetamine	4	1	0
HS 11350(a)	Controlled substance possession	46	19	8
HS 11351	Possession of drugs with intent to sell	11	1	0
HS 11351.5	Possession of drugs with intent to sell	9	2	1
HS 11352(a)	Transportation of drugs	5	5	1
HS 11357(a)	Possession of marijuana	0	2	0
HS 11358	Cultivating marijuana	1	0	0
HS 11359	Possession with intent to sell marijuana	10	9	4
HS 11360(a)	Transportation of marijuana	3	2	0
HS 11370.1	Violation by Dr. of prescription laws	3	0	0
HS 11370.1(a)	Violation by Dr. of prescription laws	5	0	0
HS 11377	Possession of drugs	2	1	0
HS 11377(a)	Possession of drugs	108	77	22
HS 11378	Sale of dangerous drugs	22	10	3
HS 11379	Manufacturing of drugs	1	0	0
HS 11379(a)	Manufacturing of drugs	11	7	3
HS 11379(b)	Manufacturing of drugs	1	0	0
PC 182/11352	Conspiracy to sell drugs	1	0	0
PC 664/11350	Attempt to possess drugs	1	0	0
	Total	244	136	42

III. Property

	Description	PRCS	CJO	Split
PC 453(a)	Possession of flammables	2	0	0
PC 459	Burglary	9	2	0
PC 459/460	Burglary	2	0	0
PC 459/460(a)	Burglary	1	1	1
PC 459/460(b)	Burglary	50	40	24
PC 460(b)	Degrees of burglary	2	0	0
PC 496(a)	Receiving stolen property	41	25	10
PC 496(d)	Receiving stolen property	1	0	1
PC 496d(a)	Receiving stolen property	29	15	6
PC 591	Destruction of telephone	1	2	0
PC 594(a)	Vandalism	8	3	2
PC 594(b)(1)	Vandalism	3	1	2
PC 626.10(B)	Trespassing on school	0	1	0
PC 646.9(a)	Trespassing on school	3	0	0
PC 646.9(b)	Trespassing on school	2	0	0
PC 664/459/460(b)	Attempted burglary	3	1	1
VC 10801	Ownership if an auto chop shop	0	2	3
VC 10851	Auto theft	6	0	0
VC 10851(a)	Auto theft	69	26	18
VC 10851(e)	Auto theft	4	0	1
VC 20001(a)	Hit and run	1	1	0
PC 484e(a)	Theft	1	0	0
PC 487	Theft	1	0	0
PC 487(a)	Theft	17	10	1
PC 487(c)	Theft	17	7	3
PC 487(d)	Theft	0	2	0
PC 487(d)(1)	Theft	1	0	0
PC 664/487(c)	Attempted theft	4	1	0
PC 666	Prior convictions of theft	57	16	8
PC 470	Forgery	1	0	0
PC 470(a)	Forgery	2	1	0
PC 470(b)	Forgery	0	1	1
PC 470(d)	Forgery	3	2	1
PC 475(a)	Possession of bad check	1	0	0
PC 476	Bad check	3	1	0
PC 476a	Bad check	1	0	0
PC 476a(a)	Bad check	1	1	0
PC 529.3	Impersonating another	1	0	0
PC 530.5	Identity theft	1	0	0
PC 530.5(a)	Identity theft	14	7	7
PC 530.5(c)(2)	Identity theft	0	0	2
PC 530.5(C)(3)	Identity theft	3	3	0

PC 530.5(d)(2)	Identity theft	1	0	0
PC 550(a)(1)	Insurance fraud	0	1	0
PC 550(b)(1)	Insurance fraud	0	0	1
VC 10501(a)	False report of auto theft	2	0	0
VC 4463(a)	Forged registration	0	1	0
WI 10980(c)(2)	Welfare fraud	0	1	1
WI 10980(g)	Welfare fraud	1	0	0
WI 14107(a)	Medical fraud	1	0	0
PC 664/10851	Attempted joyriding	4	0	0
PC 664/10851(a)	Attempted joyriding	2	1	0
	Total	377	176	94

IV. Miscellaneous

	Description	PRCS	CJO	Split
PC 236	False imprisonment	15	3	1
PC 236/237	False imprisonment	2	0	0
PC 415(3)	School disturbance	0	1	0
PC 4530(b)	Inmate escape	1	0	0
PC 4573	Possession drugs in prison	1	1	0
PC 4573.6	Possession drugs in prison	3	1	1
PC 4573.8	Possession drugs in prison	2	1	0
PC 667.5(b)	Parole violation with new charge	1	0	0
PC 148.10(a)	False identification	1	0	0
PC 503	Embezzlement	1	1	0
PC 508	Embezzlement	1	0	0
PC 69	Resisting officer	16	7	2
PC 1320(b)	Failure to appear	1	0	0
PC 134	Falsification of evidence	0	1	0
PC 136.1(b)(1)	Intimidation of witnesses	1	0	0
PC 166(c)(4)	Contempt of court	2	0	0
PC 182(a)(1)	Conspiracy	1	0	0
PC 271(a)	Child surrender	1	0	0
PC 278.5(a)	Child stealing	1	0	0
PC 29815(a)	Violation of probation/PRCS	0	1	0
PC 311.11(a)	Obscenity	2	0	0
PC 32	Accessory	1	1	1
PC 647.6(C)(2)	Distribution of alcohol to minor	1	0	0
PC 653f(b)	Solicitation	1	0	0
VC 2800.1(a)	Evasion of police	0	1	0
VC 2800.2	Evasion of police	5	0	0
VC 2800.2(a)	Evasion of police	28	0	0
	Total	89	19	5

V. DUI

	Description	PRCS	CJO	Split
VC 23152(a)	DUI	5	1	1
VC 23152(b)	DUI	25	17	3
VC 23152(b)/23550	DUI	1	0	0
VC 23153(a)	DUI	1	0	0
VC 23153(b)	DUI	4	0	0
	Total	36	18	4

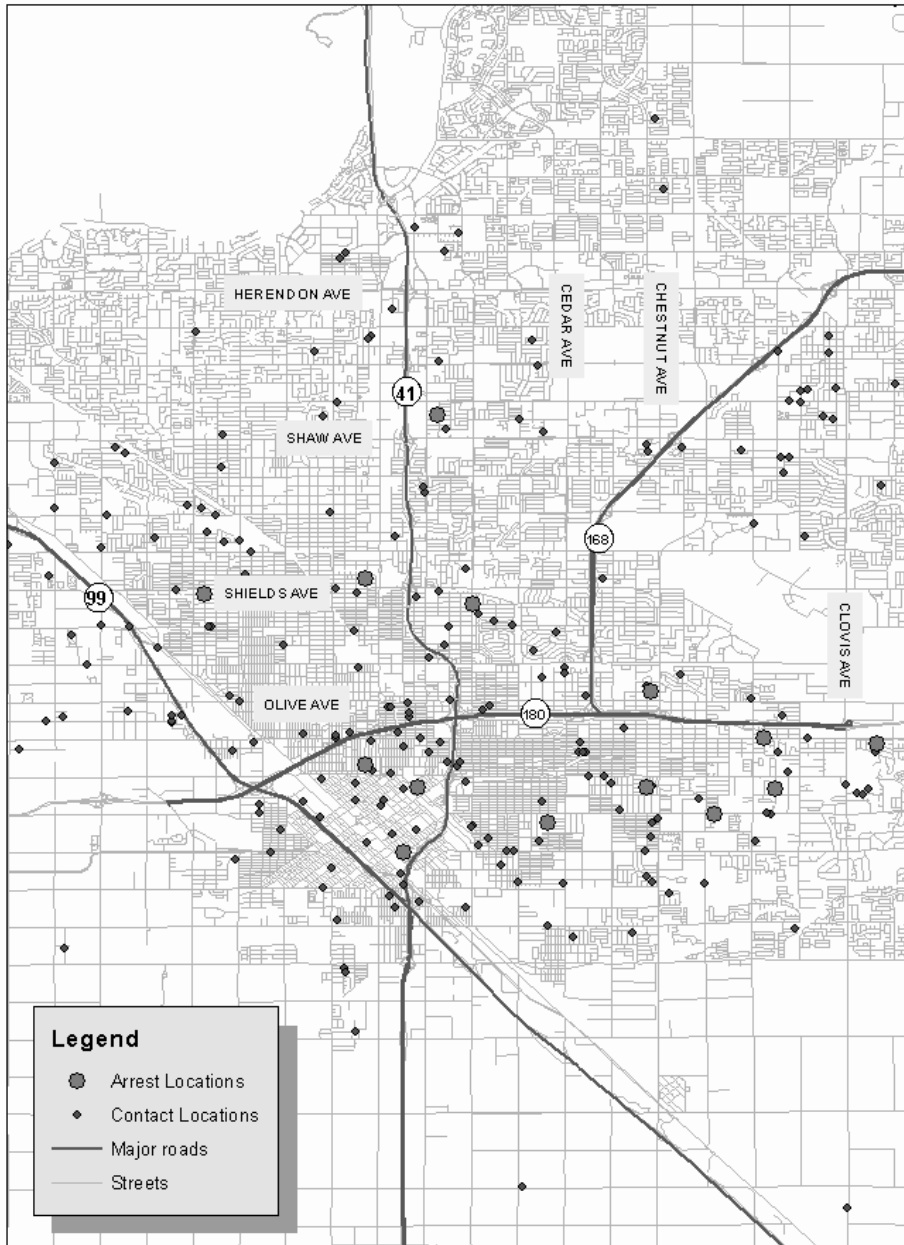
APPENDIX IV

List of Program Providers

Provider	Number
AA/NA	33
Alliant International University	4
Alternative Health Consultants	4
ASI Counseling	22
BI	4
CART	1
Charis Educational Services	5
City of Fresno Mayor's Gang Prevention Initiative	3
Clothing Assistance	16
Comprehensive Addiction Program	2
Comprehensive Counseling Services	12
Education	43
Food Assistance	21
Fresno County Behavioral Health Assessment Center	301
Fresno County Department of Behavioral Health	41
Fresno New Connections, Inc.	11
Housing Assistance	6
Integral Community Solutions Institute	4
Job Placement Assistance	55
Kings View Rural Program (Sanger)	1
Marjaree Mason Center	2
Pathways to Recovery	1
Probation	738
Public Assistance	58
Sierra Educational & Research Institute	38
Sierra Tribal Consortium	1
Transportation by P.O.	13
Turning Point of Central California, Inc.	8
Universal Health Network	32
WestCare California, Inc. MLK	7
WestCare California, Inc. Bulldog Lane	2
WestCare California, Inc. Belmont	14
Total	1,503

APPENDIX V

Contact and Arrest Locations in the Fresno/Clovis Metro Area



Note: Four arrest locations are outside of the Fresno/Clovis Metro Area.