

# COVID-19

Additional Epidemiology  
Surveillance Update: COVID-19  
Deaths  
Fresno County, CA

**-All reported numbers are preliminary and subject to change based on further investigation-**

Report only includes COVID-19 associated deaths among Confirmed cases. Does not include Probable COVID-19 associated deaths: Death in an Antigen positive case or COVID-19 listed on the Death Certificate with no confirmatory testing.

## COVID-19 Associated Deaths Among Confirmed COVID-19 Cases by Age, Fresno County

| AGE (years) | Number of deaths <sup>1</sup> | % of total COVID-19 deaths |
|-------------|-------------------------------|----------------------------|
| 0 - 29      | 8                             | 0.5                        |
| 30 - 39     | 37                            | 2.1                        |
| 40 - 49     | 91                            | 5.2                        |
| 50 - 59     | 190                           | 10.8                       |
| 60 - 69     | 378                           | 21.4                       |
| 70 - 79     | 438                           | 24.8                       |
| 80+         | 621                           | 35.2                       |

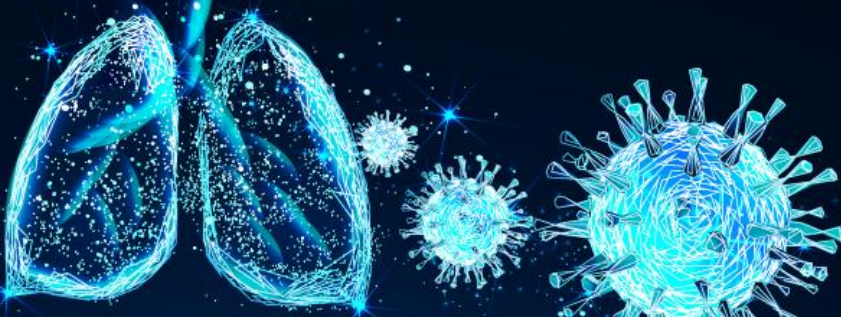
<sup>1</sup>This number represents deaths with a registered death certificate and in a confirmed COVID-19 cases. A confirmed COVID-19 cases requires detection of SARS-CoV-2 RNA in a clinical specimen using a molecular amplification detection test.

## COVID-19 Associated Deaths Among Confirmed COVID-19 Cases by Sex & Age, Fresno County

| Sex <sup>2</sup> | Number of deaths <sup>1</sup> | % of deaths under 50 years of age |
|------------------|-------------------------------|-----------------------------------|
| Female           | 718                           | 6.4                               |
| Male             | 1032                          | 8.7                               |

<sup>1</sup>This number represents deaths with a registered death certificate and in a confirmed COVID-19 cases. A confirmed COVID-19 cases requires detection of SARS-CoV-2 RNA in a clinical specimen using a molecular amplification detection test.<sup>2</sup> Based on Sex listed in CalREDIE. Other categories excluded due to low counts for confidentiality reasons. Unknowns excluded.





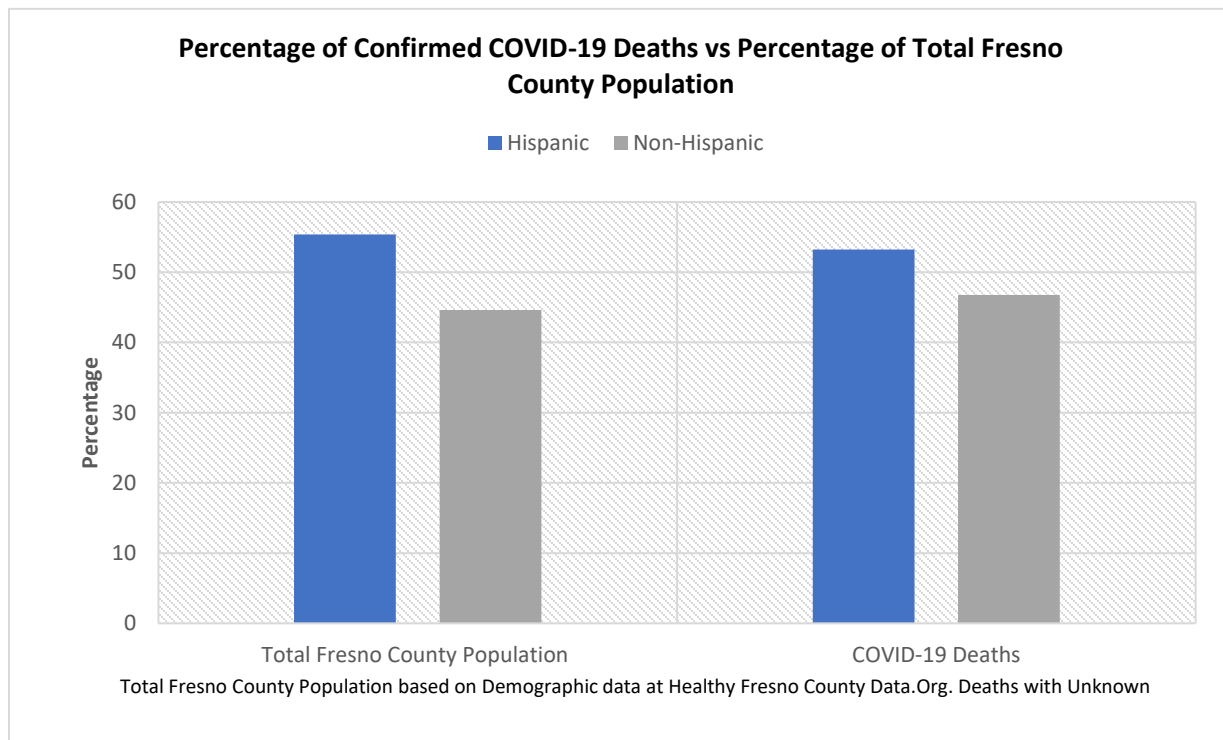
# COVID-19

Additional Epidemiology  
Surveillance Update: COVID-19  
Deaths  
Fresno County, CA

## COVID-19 Associated Deaths Among Confirmed COVID-19 Cases by Race/Ethnicity & Age, Fresno County

| Race/Ethnicity <sup>1</sup> | Number of deaths <sup>2</sup> | % of deaths under 50 years of age |
|-----------------------------|-------------------------------|-----------------------------------|
| Asian                       | 163                           | 11.0                              |
| Black                       | 68                            | 2.9                               |
| Hispanic                    | 929                           | 10.0                              |
| White                       | 545                           | 2.6                               |
| Other/Unknown <sup>4</sup>  | 58                            | 15.5                              |

<sup>1</sup> Based on Race/Ethnicity listed in CalREDIE. <sup>2</sup>This number represents deaths with a registered death certificate and in a confirmed COVID-19 cases. A confirmed COVID-19 cases requires detection of SARS-CoV-2 RNA in a clinical specimen using a molecular amplification detection test. <sup>3</sup>Other/Unknown includes deaths with unknown Race/Ethnicity or Race/Ethnicity groups with <15 deaths.



Total confirmed COVID-19 death count, confirmed deaths per community, and deaths over time information is available on the main [FCDPH COVID Data Hub](#). For information on Co-morbidities associated with negative COVID-19 outcomes please refer to the [CDC website](#) for the most comprehensive review

