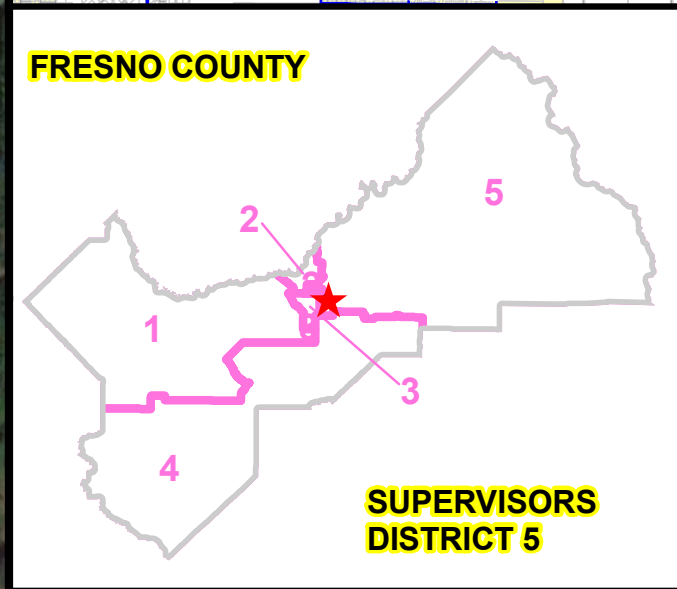
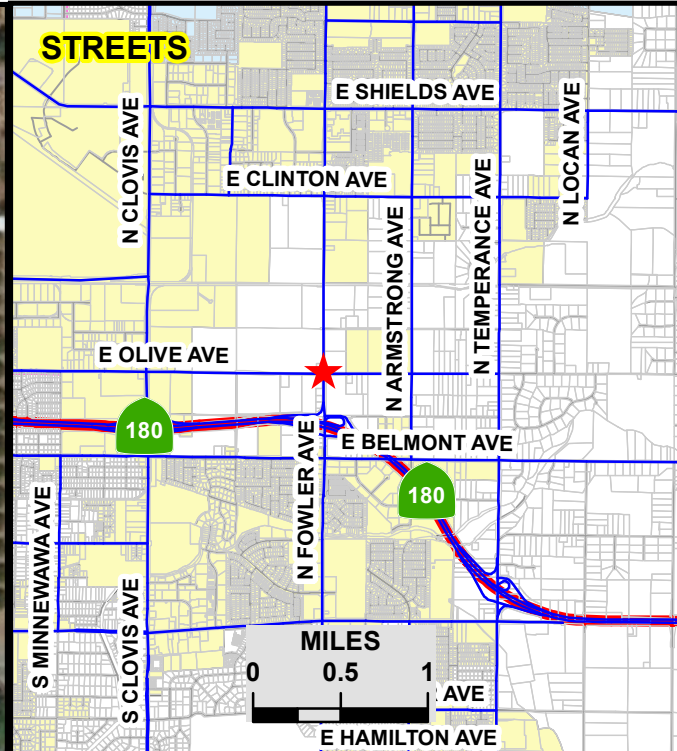
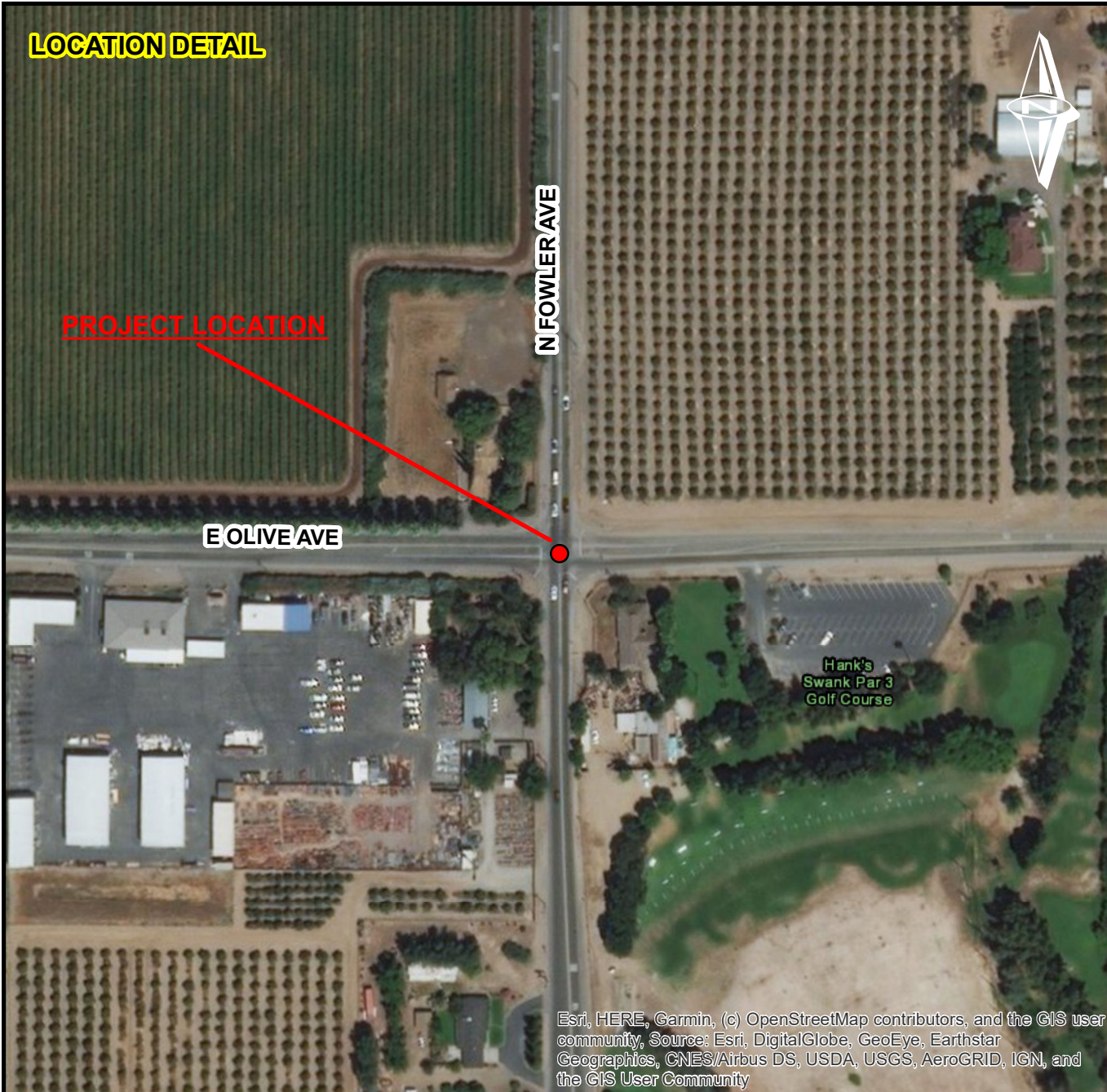


LOCATION DETAIL



Esri, HERE, Garmin, (c) OpenStreetMap contributors, and the GIS user community, Source: Esri, DigitalGlobe, GeoEye, Earthstar Geographics, CNES/Airbus DS, USDA, USGS, AeroGRID, IGN, and the GIS User Community

	DATE:	SCALE IN FEET
DESIGNED: C.M.	02/21/2020	
DRAWN: C.M.	02/21/2020	
STATE BRIDGE NO.	N/A	



DEPARTMENT OF PUBLIC WORKS & PLANNING

CMAQ - FOWLER AVE AND OLIVE AVE TRAFFIC SIGNAL