

# TEST HOLE DATA REPORT

TEST HOLE NO: TH01  
 TEST HOLE DATE: 7/6/2022  
 PROJECT NO: CA17300101  
 CLIENT: COUNTY OF FRESNO  
 PROJECT: ATP BIOLA



5622 Research Drive Suite A  
 Huntington Beach, California 92649  
 TEL: 714.487.5780  
 www.T2ue.com

CLIENT TEST HOLE NO: TH01  
 SUE CREW/TRUCK NO: SA/JW/540603  
 CITY, COUNTY: BIOLA, FRESNO, CA  
 LOCATION/INTERSECTION: BIOLA & F STREET

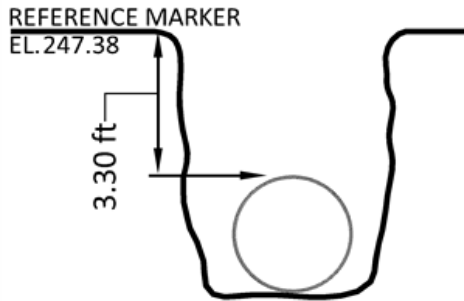
**MAP**



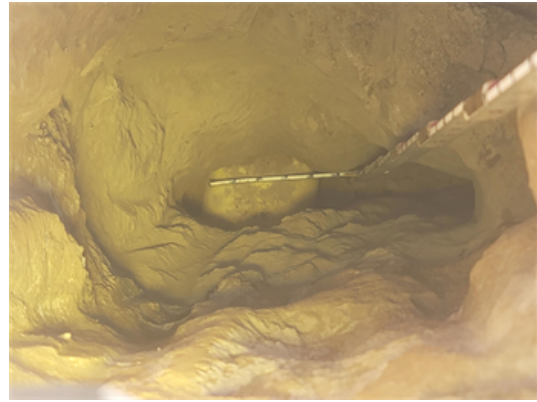
**SITE PHOTO - FACING NORTH**



**CROSS SECTION - NOT TO SCALE**



**TEST HOLE - UTILITY - FACING NORTH**



DISCLAIMER: ADDITIONAL MATERIAL AND/OR UTILITIES MAY EXIST BELOW APPARENT BOTTOM

UTILITY DESCRIPTION		REFERENCE MARKER	
UTILITY TYPE	GAS MAIN/PIPELINE	NORTHING	10367.52'
UTILITY MATERIAL	PLASTIC (PVC, PE, HDPE)	EASTING	9423.41'
UTILITY DIRECTION	NORTH - SOUTH	ELEVATION	247.38'
UTILITY WIDTH (FIELD)	4.00"	LOCATION	CENTER OF UTILITY
UTILITY WIDTH (RECORD)		MARKED BY	NAIL & DISK
APPARENT UTILITY OWNER	PG&E	STATION	
<b>DEPTH FROM REFERENCE MARKER</b>		OFFSET	-
TOP OF UTILITY	3.30'	OFFSET FROM	
BOTTOM OF UTILITY	-		
<b>ELEVATION OF UTILITY</b>			
TOP OF UTILITY	244.08'		
APPARENT BOTTOM OF UTILITY	-		
<b>SURFACE</b>			
TYPE	ASPHALT		
THICKNESS	4.00"		

REMARKS:  
 OPENED TESTHOLE ON PREMARK. FOUND 4-IN PLASTIC GAS LINE AT-3.30FT.

REVISION NOTES:

REVIEWED DATE: 7/26/2022      CHECKED DATE: \_\_\_\_\_      REVISION DATE: \_\_\_\_\_  
 REVIEWED BY: rh      CHECKED BY: \_\_\_\_\_

# TEST HOLE DATA REPORT

TEST HOLE NO: TH02  
 TEST HOLE DATE: 7/6/2022  
 PROJECT NO: CA17300101  
 CLIENT: COUNTY OF FRESNO  
 PROJECT: ATP BIOLA



5622 Research Drive Suite A  
 Huntington Beach, California 92649  
 TEL: 714.487.5780  
 www.T2ue.com

CLIENT TEST HOLE NO: TH02  
 SUE CREW/TRUCK NO: SA/JW/550603  
 CITY, COUNTY: BIOLA, FRESNO, CA  
 LOCATION/INTERSECTION: BIOLA & F STREET

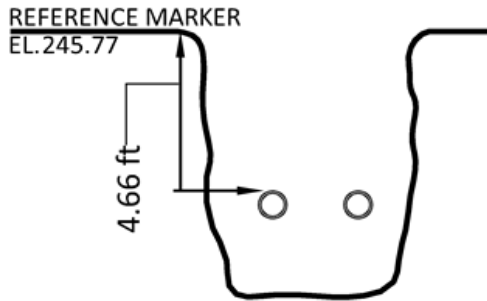
**MAP**



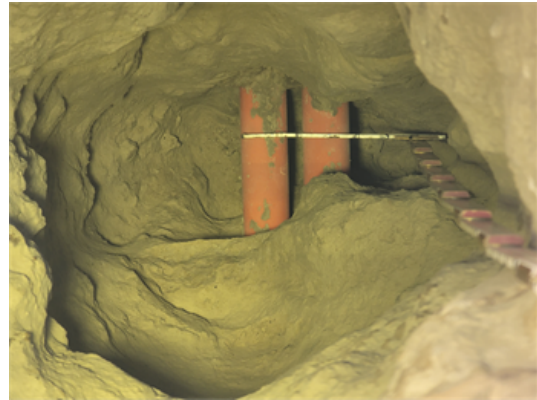
**SITE PHOTO - FACING NORTH**



**CROSS SECTION - NOT TO SCALE**



**TEST HOLE - UTILITY - FACING NORTH**



DISCLAIMER: ADDITIONAL MATERIAL AND/OR UTILITIES MAY EXIST BELOW APPARENT BOTTOM

UTILITY DESCRIPTION		REFERENCE MARKER	
UTILITY TYPE	TELECOM	NORTHING	10367.37'
UTILITY MATERIAL	PLASTIC (PVC, PE, HDPE)	EASTING	9436.79'
UTILITY DIRECTION	NORTH - SOUTH	ELEVATION	245.77'
UTILITY WIDTH (FIELD)	4.00"	LOCATION	CENTER OF UTILITY
UTILITY WIDTH (RECORD)		MARKED BY	NAIL & DISK
APPARENT UTILITY OWNER	SABASTIAN	STATION	
<b>DEPTH FROM REFERENCE MARKER</b>		OFFSET	-
TOP OF UTILITY	4.66'	OFFSET FROM	
BOTTOM OF UTILITY	-		
<b>ELEVATION OF UTILITY</b>			
TOP OF UTILITY	241.11'		
APPARENT BOTTOM OF UTILITY	-		
<b>SURFACE</b>			
TYPE	ASPHALT		
THICKNESS	6.00"		

REMARKS:  
 OPENED TESTHOLE ON PREMARK. FOUND (2) 1.5IN PLASTIC TELCOM CONDUITS AT -4.66FT.

REVISION NOTES:

REVIEWED DATE: 7/26/2022	CHECKED DATE: 7/26/2022	REVISION DATE:
REVIEWED BY: rh	CHECKED BY: rh	

# TEST HOLE DATA REPORT

TEST HOLE NO: TH03  
 TEST HOLE DATE: 7/7/2022  
 PROJECT NO: CA17300101  
 CLIENT: COUNTY OF FRESNO  
 PROJECT: ATP BIOLA



5622 Research Drive Suite A  
 Huntington Beach, California 92649  
 TEL: 714.487.5780  
 www.T2ue.com

CLIENT TEST HOLE NO: TH03  
 SUE CREW/TRUCK NO: SA/JW/550603  
 CITY, COUNTY: BIOLA, FRESNO, CA  
 LOCATION/INTERSECTION: BIOLA N/O F STREET

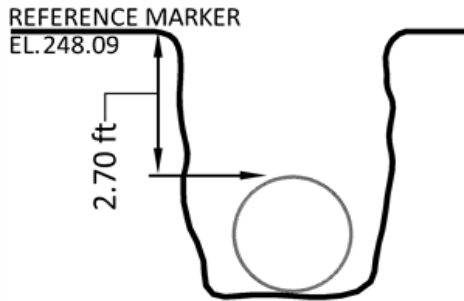
**MAP**



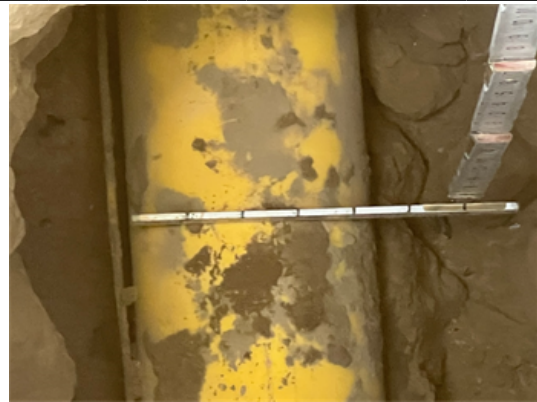
**SITE PHOTO - FACING NORTH**



**CROSS SECTION - NOT TO SCALE**



**TEST HOLE - UTILITY - FACING NORTH**



DISCLAIMER: ADDITIONAL MATERIAL AND/OR UTILITIES MAY EXIST BELOW APPARENT BOTTOM

UTILITY DESCRIPTION		REFERENCE MARKER	
UTILITY TYPE	GAS MAIN/PIPELINE	NORTHING	10522.02'
UTILITY MATERIAL	PLASTIC (PVC, PE, HDPE)	EASTING	9416.18'
UTILITY DIRECTION	EAST - WEST	ELEVATION	248.09'
UTILITY WIDTH (FIELD)	4.00"	LOCATION	CENTER OF UTILITY
UTILITY WIDTH (RECORD)	4	MARKED BY	NAIL & DISK
APPARENT UTILITY OWNER	PG&E	STATION	
<b>DEPTH FROM REFERENCE MARKER</b>		OFFSET	-
TOP OF UTILITY	2.70'	OFFSET FROM	
BOTTOM OF UTILITY	-		
<b>ELEVATION OF UTILITY</b>			
TOP OF UTILITY	245.39'		
APPARENT BOTTOM OF UTILITY	-		
<b>SURFACE</b>			
TYPE	ASPHALT		
THICKNESS	4.00"		

REMARKS:  
 OPENED TESTHOLE ON PREMARK. FOUND 4-IN PLASTIC GAS LINE AT -2.70FT.

REVISION NOTES:

REVIEWED DATE: <u>7/26/2022</u>	CHECKED DATE: <u>7/26/2022</u>	REVISION DATE:
REVIEWED BY: <u>rh</u>	CHECKED BY: <u>rh</u>	



# TEST HOLE DATA REPORT

TEST HOLE NO: TH04  
 TEST HOLE DATE: 7/7/2022  
 PROJECT NO: CA17300101  
 CLIENT: COUNTY OF FRESNO  
 PROJECT: ATP BIOLA



5622 Research Drive Suite A  
 Huntington Beach, California 92649  
 TEL: 714.487.5780  
 www.T2ue.com

CLIENT TEST HOLE NO: TH04  
 SUE CREW/TRUCK NO: SA/JDW/550603  
 CITY,COUNTY: BIOLA, FRESNO, CA

LOCATION/INTERSECTION:  
BIOLA N/O F STREET

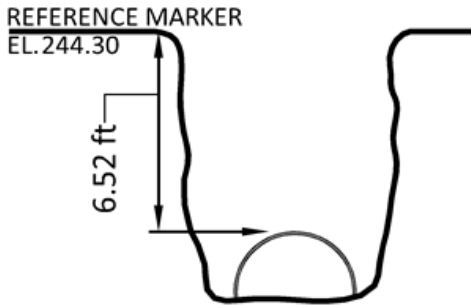
**MAP**



**SITE PHOTO - FACING NORTH**



**CROSS SECTION - NOT TO SCALE**



**TEST HOLE - UTILITY - FACING NORTH**



DISCLAIMER: ADDITIONAL MATERIAL AND/OR UTILITIES MAY EXIST BELOW APPARENT BOTTOM

**UTILITY DESCRIPTION**

UTILITY TYPE: SANITARY SEWER  
 UTILITY MATERIAL: CLAY  
 UTILITY DIRECTION: EAST - WEST  
 UTILITY WIDTH (FIELD): 10.00"  
 UTILITY WIDTH (RECORD):  
 APPARENT UTILITY OWNER: UNKNOWN

**DEPTH FROM REFERENCE MARKER**

TOP OF UTILITY: 6.52'  
 BOTTOM OF UTILITY: -

**ELEVATION OF UTILITY**

TOP OF UTILITY: 237.78'  
 APPARENT BOTTOM OF UTILITY: -

**SURFACE**

TYPE: ASPHALT  
 THICKNESS: 4.00"

**REFERENCE MARKER**

NORTHING: 10531.58'  
 EASTING: 9416.18'  
 ELEVATION: 244.30'  
 LOCATION: CENTER OF UTILITY  
 MARKED BY: NAIL & DISK  
 STATION:  
 OFFSET: -  
 OFFSET FROM:

REMARKS:  
 OPENED TESTHOLE ON PREMARK. FOUND 10-IN VCP SEWER AT -6.52FT.

REVISION NOTES:

REVIEWED DATE: 7/26/2022

CHECKED DATE: 7/26/2022

REVISION DATE:

REVIEWED BY: rh

CHECKED BY: rh



# TEST HOLE DATA REPORT

TEST HOLE NO: TH05  
 TEST HOLE DATE: 7/7/2022  
 PROJECT NO: CA17300101  
 CLIENT: COUNTY OF FRESNO  
 PROJECT: ATP BIOLA



5622 Research Drive Suite A  
 Huntington Beach, California 92649  
 TEL: 714.487.5780  
 www.T2ue.com

CLIENT TEST HOLE NO: TH05  
 SUE CREW/TRUCK NO: SA/JDW/560603  
 CITY, COUNTY: BIOLA, FRESNO, CA  
 LOCATION/INTERSECTION: BIOLA N/O F STREET

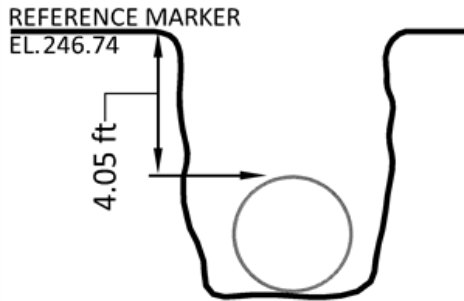
**MAP**



**SITE PHOTO - FACING NORTH**



**CROSS SECTION - NOT TO SCALE**



**TEST HOLE - UTILITY - FACING NORTH**



DISCLAIMER: ADDITIONAL MATERIAL AND/OR UTILITIES MAY EXIST BELOW APPARENT BOTTOM

UTILITY DESCRIPTION		REFERENCE MARKER	
UTILITY TYPE	WATER MAIN	NORTHING	10537.01'
UTILITY MATERIAL	ASBESTOS CEMENT (TRANSITE)	EASTING	9417.68'
UTILITY DIRECTION	NORTH - SOUTH	ELEVATION	246.74'
UTILITY WIDTH (FIELD)	6.00"	LOCATION	CENTER OF UTILITY
UTILITY WIDTH (RECORD)		MARKED BY	NAIL & DISK
APPARENT UTILITY OWNER	UNKNOWN	STATION	
<b>DEPTH FROM REFERENCE MARKER</b>		OFFSET	-
TOP OF UTILITY	4.05'	OFFSET FROM	
BOTTOM OF UTILITY	-		
<b>ELEVATION OF UTILITY</b>			
TOP OF UTILITY	242.69'		
APPARENT BOTTOM OF UTILITY	-		
<b>SURFACE</b>			
TYPE	ASPHALT		
THICKNESS	8.00"		

REMARKS:  
 OPENED TESTHOLE ON PREMARK. FOUND 6-IN ACP WATERLINE WITH THREADED END CAP TRANSITION TO 2-IN PIPE. AT -4.05FT. NO THRUST BLOCK VISIBLE.

REVISION NOTES:

REVIEWED DATE: <u>7/26/2022</u>	CHECKED DATE: <u>7/26/2022</u>	REVISION DATE:
REVIEWED BY: <u>rh</u>	CHECKED BY: <u>rh</u>	

# TEST HOLE DATA REPORT

TEST HOLE NO: TH06  
 TEST HOLE DATE: 7/7/2022  
 PROJECT NO: CA17300101  
 CLIENT: COUNTY OF FRESNO  
 PROJECT: ATP BIOLA



5622 Research Drive Suite A  
 Huntington Beach, California 92649  
 TEL: 714.487.5780  
 www.T2ue.com

CLIENT TEST HOLE NO: TH06  
 SUE CREW/TRUCK NO: SA/JW/550603  
 CITY, COUNTY: BIOLA, FRESNO, CA  
 LOCATION/INTERSECTION: BIOLA & E STREET

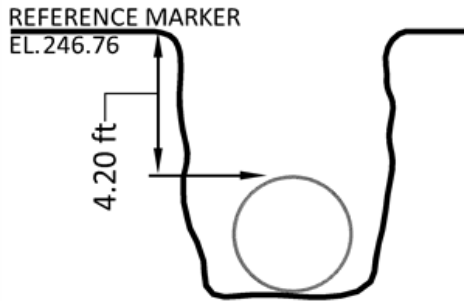
**MAP**



**SITE PHOTO - FACING NORTH**



**CROSS SECTION - NOT TO SCALE**



**TEST HOLE - UTILITY - FACING NORTH**



DISCLAIMER: ADDITIONAL MATERIAL AND/OR UTILITIES MAY EXIST BELOW APPARENT BOTTOM

UTILITY DESCRIPTION		REFERENCE MARKER	
UTILITY TYPE	WATER MAIN	NORTHING	10724.14'
UTILITY MATERIAL	ASBESTOS CEMENT (TRANSITE)	EASTING	9416.05'
UTILITY DIRECTION	NORTH - SOUTH	ELEVATION	246.76'
UTILITY WIDTH (FIELD)	6.00"	LOCATION	CENTER OF UTILITY
UTILITY WIDTH (RECORD)		MARKED BY	NAIL & DISK
APPARENT UTILITY OWNER	UNKNOWN	STATION	
<b>DEPTH FROM REFERENCE MARKER</b>		OFFSET	-
TOP OF UTILITY	4.20'	OFFSET FROM	
BOTTOM OF UTILITY	-		
<b>ELEVATION OF UTILITY</b>			
TOP OF UTILITY	242.56'		
APPARENT BOTTOM OF UTILITY	-		
<b>SURFACE</b>			
TYPE	ASPHALT		
THICKNESS	7.00"		

REMARKS:  
 OPENED TESTHOLE ON PREMARK. FOUND 6-IN ACP WATERLINE AT -4.20FT.

REVISION NOTES:

REVIEWED DATE: 7/26/2022	CHECKED DATE: 7/26/2022	REVISION DATE:
REVIEWED BY: rh	CHECKED BY: rh	

# TEST HOLE DATA REPORT

TEST HOLE NO: TH07  
 TEST HOLE DATE: 7/6/2022  
 PROJECT NO: CA17300101  
 CLIENT: COUNTY OF FRESNO  
 PROJECT: ATP BIOLA



5622 Research Drive Suite A  
 Huntington Beach, California 92649  
 TEL: 714.487.5780  
 www.T2ue.com

CLIENT TEST HOLE NO: TH07  
 SUE CREW/TRUCK NO: SA/JW/550603  
 CITY, COUNTY: BIOLA, FRESNO, CA  
 LOCATION/INTERSECTION: BIOLA & E STREET

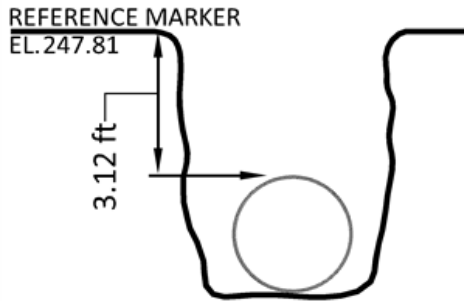
**MAP**



**SITE PHOTO - FACING NORTH**



**CROSS SECTION - NOT TO SCALE**



**TEST HOLE - UTILITY - FACING NORTH**



DISCLAIMER: ADDITIONAL MATERIAL AND/OR UTILITIES MAY EXIST BELOW APPARENT BOTTOM

UTILITY DESCRIPTION		REFERENCE MARKER	
UTILITY TYPE	GAS MAIN/PIPELINE	NORTHING	10724.26'
UTILITY MATERIAL	PLASTIC (PVC, PE, HDPE)	EASTING	9424.99'
UTILITY DIRECTION	NORTH - SOUTH	ELEVATION	247.81'
UTILITY WIDTH (FIELD)	4.00"	LOCATION	CENTER OF UTILITY
UTILITY WIDTH (RECORD)		MARKED BY	NAIL & DISK
APPARENT UTILITY OWNER	PG&E	STATION	
<b>DEPTH FROM REFERENCE MARKER</b>		OFFSET	-
TOP OF UTILITY	3.12'	OFFSET FROM	
BOTTOM OF UTILITY	-		
<b>ELEVATION OF UTILITY</b>			
TOP OF UTILITY	244.69'		
APPARENT BOTTOM OF UTILITY	-		
<b>SURFACE</b>			
TYPE	ASPHALT		
THICKNESS	4.00"		

REMARKS:  
 OPENED TESTHOLE ON PREMARK. FOUND 4-IN PLASTIC GAS LINE AT -3.12FT.

REVISION NOTES:

REVIEWED DATE: 7/26/2022	CHECKED DATE: 7/26/2022	REVISION DATE:
REVIEWED BY: rh	CHECKED BY: rh	



# TEST HOLE DATA REPORT

TEST HOLE NO: TH08  
 TEST HOLE DATE: 7/6/2022  
 PROJECT NO: CA17300101  
 CLIENT: COUNTY OF FRESNO  
 PROJECT: ATP BIOLA



5622 Research Drive Suite A  
 Huntington Beach, California 92649  
 TEL: 714.487.5780  
 www.T2ue.com

CLIENT TEST HOLE NO: TH08  
 SUE CREW/TRUCK NO: SA/JW/550603  
 CITY,COUNTY: BIOLA, FRESNO, CA  
 LOCATION/INTERSECTION: BIOLA & E

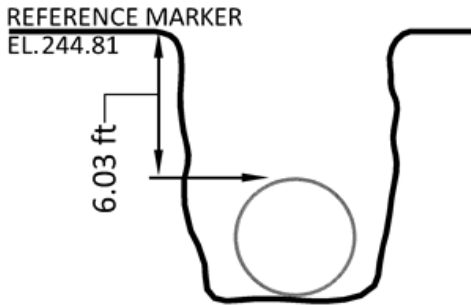
**MAP**



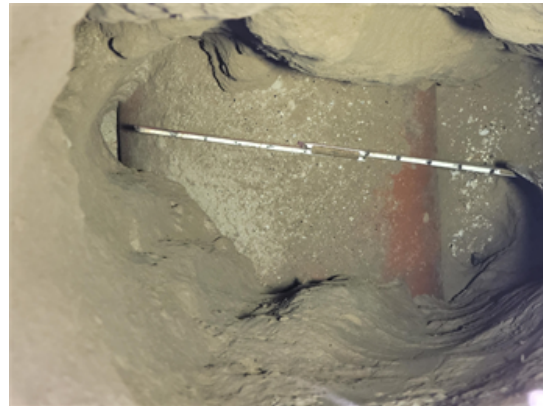
**SITE PHOTO - FACING NORTH**



**CROSS SECTION - NOT TO SCALE**



**TEST HOLE - UTILITY - FACING NORTH**



DISCLAIMER: ADDITIONAL MATERIAL AND/OR UTILITIES MAY EXIST BELOW APPARENT BOTTOM

**UTILITY DESCRIPTION**

UTILITY TYPE: SANITARY SEWER  
 UTILITY MATERIAL: CLAY  
 UTILITY DIRECTION: NORTH - SOUTH  
 UTILITY WIDTH (FIELD): 10.00"  
 UTILITY WIDTH (RECORD):  
 APPARENT UTILITY OWNER: UNKNOWN

**DEPTH FROM REFERENCE MARKER**

TOP OF UTILITY: 6.03'  
 BOTTOM OF UTILITY: -

**ELEVATION OF UTILITY**

TOP OF UTILITY: 238.78'  
 APPARENT BOTTOM OF UTILITY: -

**SURFACE**

TYPE: ASPHALT  
 THICKNESS: 4.00"

**REFERENCE MARKER**

NORTHING: 10725.68'  
 EASTING: 9426.33'  
 ELEVATION: 244.81'  
 LOCATION: CENTER OF UTILITY  
 MARKED BY: NAIL & DISK  
 STATION:  
 OFFSET: -  
 OFFSET FROM:

REMARKS:  
 OPENED TESTHOLE ON PREMARK. FOUND 10-IN VCP SEWER AT -6.03FT. THIS COULD BE A NOMINAL 8" PIPE SIZE

REVISION NOTES:

REVIEWED DATE: 7/26/2022  
 REVIEWED BY: rh

CHECKED DATE: 7/26/2022  
 CHECKED BY: rh

REVISION DATE:

# TEST HOLE DATA REPORT

TEST HOLE NO: TH09  
 TEST HOLE DATE: 7/7/2022  
 PROJECT NO: CA17300101  
 CLIENT: COUNTY OF FRESNO  
 PROJECT: ATP BIOLA



5622 Research Drive Suite A  
 Huntington Beach, California 92649  
 TEL: 714.487.5780  
 www.T2ue.com

CLIENT TEST HOLE NO: TH09  
 SUE CREW/TRUCK NO: SA/JW/550603  
 CITY, COUNTY: BIOLA, FRESNO, CA  
 LOCATION/INTERSECTION: BIOLA N/O E STREET

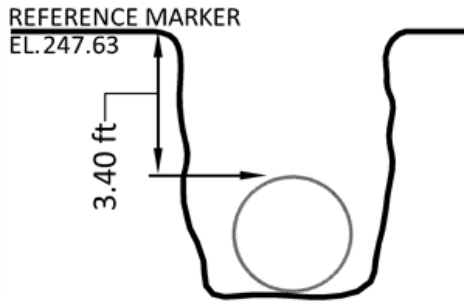
**MAP**



**SITE PHOTO - FACING EAST**



**CROSS SECTION - NOT TO SCALE**



**TEST HOLE - UTILITY - FACING NORTH**



DISCLAIMER: ADDITIONAL MATERIAL AND/OR UTILITIES MAY EXIST BELOW APPARENT BOTTOM

UTILITY DESCRIPTION		REFERENCE MARKER	
UTILITY TYPE	WATER MAIN	NORTHING	10881.82'
UTILITY MATERIAL	ASBESTOS CEMENT (TRANSITE)	EASTING	9415.88'
UTILITY DIRECTION	NORTH - SOUTH	ELEVATION	247.63'
UTILITY WIDTH (FIELD)	6.00"	LOCATION	CENTER OF UTILITY
UTILITY WIDTH (RECORD)		MARKED BY	NAIL & DISK
APPARENT UTILITY OWNER	UNKNOWN	STATION	
<b>DEPTH FROM REFERENCE MARKER</b>		OFFSET	-
TOP OF UTILITY	3.40'	OFFSET FROM	
BOTTOM OF UTILITY	-		
<b>ELEVATION OF UTILITY</b>			
TOP OF UTILITY	244.23'		
APPARENT BOTTOM OF UTILITY	-		
<b>SURFACE</b>			
TYPE	ASPHALT		
THICKNESS	7.00"		

REMARKS:  
 OPENED TESTHOLE ON PREMARK. FOUND 4-WAY DUCTILE IRON CROSS AT -3.40FT. WEST CONNECTION IS CAPPED. ALL N,E,& S PIPES ARE 6-IN ACP.

REVISION NOTES:

REVIEWED DATE: 7/26/2022	CHECKED DATE: 7/26/2022	REVISION DATE:
REVIEWED BY: rh	CHECKED BY: rh	

# TEST HOLE DATA REPORT

TEST HOLE NO: TH10  
 TEST HOLE DATE: 7/6/2022  
 PROJECT NO: CA17300101  
 CLIENT: COUNTY OF FRESNO  
 PROJECT: ATP BIOLA



5622 Research Drive Suite A  
 Huntington Beach, California 92649  
 TEL: 714.487.5780  
 www.T2ue.com

CLIENT TEST HOLE NO: TH10  
 SUE CREW/TRUCK NO: SA/JW/550603  
 CITY, COUNTY: BIOLA, FRESNO, CA  
 LOCATION/INTERSECTION: BIOLA & D STREET

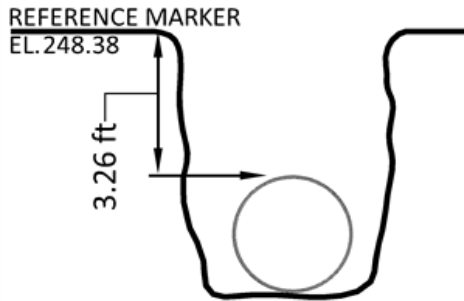
**MAP**



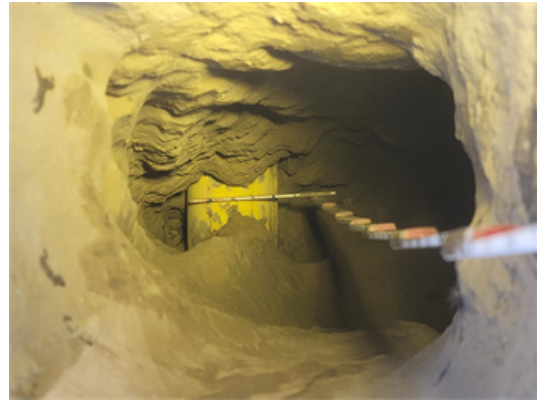
**SITE PHOTO - FACING NORTH**



**CROSS SECTION - NOT TO SCALE**



**TEST HOLE - UTILITY - FACING NORTH**



DISCLAIMER: ADDITIONAL MATERIAL AND/OR UTILITIES MAY EXIST BELOW APPARENT BOTTOM

UTILITY DESCRIPTION		REFERENCE MARKER	
UTILITY TYPE	GAS MAIN/PIPELINE	NORTHING	11050.39'
UTILITY MATERIAL	PLASTIC (PVC, PE, HDPE)	EASTING	9422.25'
UTILITY DIRECTION	NORTH - SOUTH	ELEVATION	248.38'
UTILITY WIDTH (FIELD)	4.00"	LOCATION	CENTER OF UTILITY
UTILITY WIDTH (RECORD)		MARKED BY	NAIL & DISK
APPARENT UTILITY OWNER	PG&E	STATION	
<b>DEPTH FROM REFERENCE MARKER</b>		OFFSET	-
TOP OF UTILITY	3.26'	OFFSET FROM	
BOTTOM OF UTILITY	-		
<b>ELEVATION OF UTILITY</b>			
TOP OF UTILITY	245.12'		
APPARENT BOTTOM OF UTILITY	-		
<b>SURFACE</b>			
TYPE	ASPHALT		
THICKNESS	4.00"		

REMARKS:  
 OPENED TESTHOLE ON PREMARK. FOUND 4-IN PLASTIC GAS LINE AT -3.26FT.

REVISION NOTES:

REVIEWED DATE: 7/26/2022	CHECKED DATE: 7/26/2022	REVISION DATE:
REVIEWED BY: rh	CHECKED BY: rh	



# TEST HOLE DATA REPORT

TEST HOLE NO: TH11  
 TEST HOLE DATE: 7/6/2022  
 PROJECT NO: CA17300101  
 CLIENT: COUNTY OF FRESNO  
 PROJECT: ATP BIOLA



5622 Research Drive Suite A  
 Huntington Beach, California 92649  
 TEL: 714.487.5780  
 www.T2ue.com

CLIENT TEST HOLE NO: TH11  
 SUE CREW/TRUCK NO: SA/JW/550603  
 CITY, COUNTY: BIOLA, FRESNO, CA

LOCATION/INTERSECTION: BIOLA & D STREET

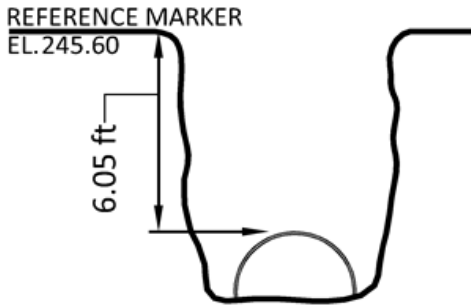
**MAP**



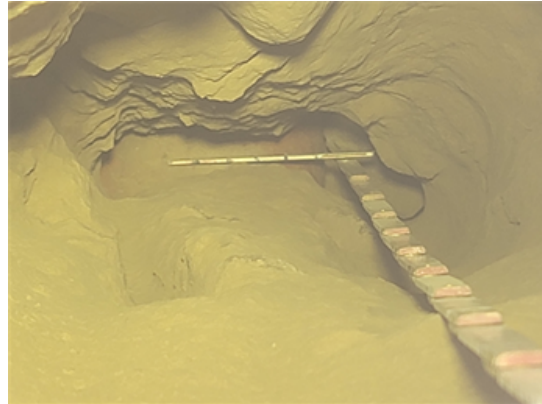
**SITE PHOTO - FACING NORTH**



**CROSS SECTION - NOT TO SCALE**



**TEST HOLE - UTILITY - FACING NORTH**



DISCLAIMER: ADDITIONAL MATERIAL AND/OR UTILITIES MAY EXIST BELOW APPARENT BOTTOM

**UTILITY DESCRIPTION**

UTILITY TYPE: SANITARY SEWER  
 UTILITY MATERIAL: CLAY  
 UTILITY DIRECTION: NORTH - SOUTH  
 UTILITY WIDTH (FIELD): 10.00"  
 UTILITY WIDTH (RECORD):  
 APPARENT UTILITY OWNER: UNKNOWN

**DEPTH FROM REFERENCE MARKER**

TOP OF UTILITY: 6.05'  
 BOTTOM OF UTILITY: -

**ELEVATION OF UTILITY**

TOP OF UTILITY: 239.55'  
 APPARENT BOTTOM OF UTILITY: -

**SURFACE**

TYPE: ASPHALT  
 THICKNESS: 4.00"

**REFERENCE MARKER**

NORTHING: 11051.30'  
 EASTING: 9424.26'  
 ELEVATION: 245.60'  
 LOCATION: CENTER OF UTILITY  
 MARKED BY: NAIL & DISK  
 STATION:  
 OFFSET: -  
 OFFSET FROM:

REMARKS:  
 OPENED TESTHOLE ON PREMARK. FOUND 10-IN VCP SEWER AT -6.05FT. THIS COULD BE A NOMNAL 8" PIPE SIZE

REVISION NOTES:

REVIEWED DATE: 7/26/2022

CHECKED DATE: 7/26/2022

REVISION DATE:

REVIEWED BY: rh

CHECKED BY: rh

# TEST HOLE DATA REPORT

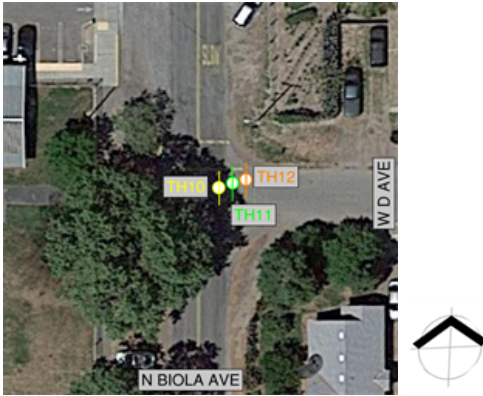
TEST HOLE NO: TH12  
 TEST HOLE DATE: 7/6/2022  
 PROJECT NO: CA17300101  
 CLIENT: COUNTY OF FRESNO  
 PROJECT: ATP BIOLA



5622 Research Drive Suite A  
 Huntington Beach, California 92649  
 TEL: 714.487.5780  
 www.T2ue.com

CLIENT TEST HOLE NO: TH12  
 SUE CREW/TRUCK NO: SA/JW/550603  
 CITY, COUNTY: BIOLA, FRESNO, CA  
 LOCATION/INTERSECTION: BIOLA & D STREET

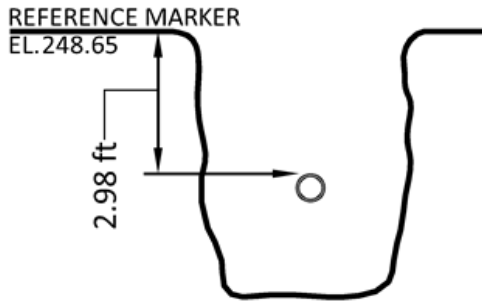
**MAP**



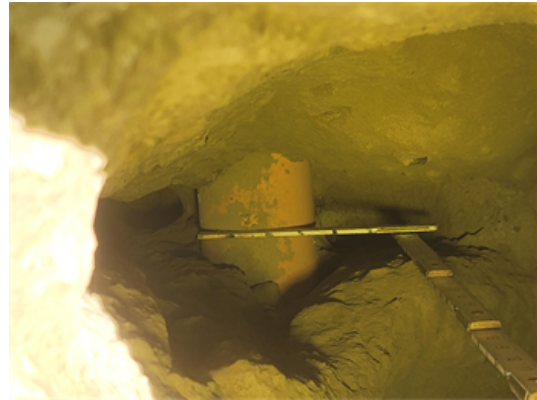
**SITE PHOTO - FACING NORTH**



**CROSS SECTION - NOT TO SCALE**



**TEST HOLE - UTILITY - FACING NORTH**



**DISCLAIMER: ADDITIONAL MATERIAL AND/OR UTILITIES MAY EXIST BELOW APPARENT BOTTOM**

UTILITY DESCRIPTION		REFERENCE MARKER	
UTILITY TYPE	CABLE TV	NORTHING	11052.15'
UTILITY MATERIAL	PLASTIC (PVC, PE, HDPE)	EASTING	9427.04'
UTILITY DIRECTION	NORTH - SOUTH	ELEVATION	248.65'
UTILITY WIDTH (FIELD)	3.00"	LOCATION	CENTER OF UTILITY
UTILITY WIDTH (RECORD)		MARKED BY	NAIL & DISK
APPARENT UTILITY OWNER	UNKNOWN	STATION	
<b>DEPTH FROM REFERENCE MARKER</b>		OFFSET	-
TOP OF UTILITY	2.98'	OFFSET FROM	
BOTTOM OF UTILITY	-		
<b>ELEVATION OF UTILITY</b>			
TOP OF UTILITY	245.67'		
APPARENT BOTTOM OF UTILITY	-		
<b>SURFACE</b>			
TYPE	ASPHALT		
THICKNESS	4.00"		

REMARKS:  
 OPENED TESTHOLE ON PREMARK. FOUND 3-IN PLASTIC CATV CONDUIT AT -2.98FT.

REVISION NOTES:

REVIEWED DATE: <u>7/26/2022</u>	CHECKED DATE: <u>7/26/2022</u>	REVISION DATE:
REVIEWED BY: <u>rh</u>	CHECKED BY: <u>rh</u>	

# TEST HOLE DATA REPORT

TEST HOLE NO: TH13  
 TEST HOLE DATE: 7/7/2022  
 PROJECT NO: CA17300101  
 CLIENT: COUNTY OF FRESNO  
 PROJECT: ATP BIOLA



5622 Research Drive Suite A  
 Huntington Beach, California 92649  
 TEL: 714.487.5780  
 www.T2ue.com

CLIENT TEST HOLE NO: TH13  
 SUE CREW/TRUCK NO: SAJW/550603  
 CITY,COUNTY: BIOLA, FRESNO, CA

LOCATION/INTERSECTION:  
BIOLA N/O D STREET

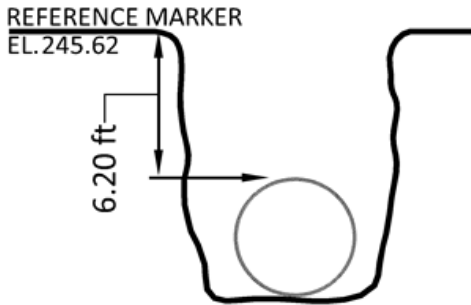
**MAP**



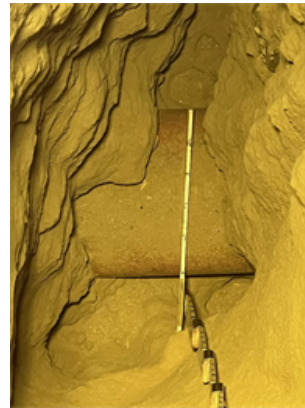
**SITE PHOTO - FACING NORTH**



**CROSS SECTION - NOT TO SCALE**



**TEST HOLE - UTILITY - FACING NORTH**



DISCLAIMER: ADDITIONAL MATERIAL AND/OR UTILITIES MAY EXIST BELOW APPARENT BOTTOM

**UTILITY DESCRIPTION**

UTILITY TYPE: SANITARY SEWER  
 UTILITY MATERIAL: CLAY  
 UTILITY DIRECTION: EAST - WEST  
 UTILITY WIDTH (FIELD): 4.00"  
 UTILITY WIDTH (RECORD):  
 APPARENT UTILITY OWNER: UNKNOWN

**DEPTH FROM REFERENCE MARKER**

TOP OF UTILITY: 6.20'  
 BOTTOM OF UTILITY: -

**ELEVATION OF UTILITY**

TOP OF UTILITY: 239.42'  
 APPARENT BOTTOM OF UTILITY: -

**SURFACE**

TYPE: ASPHALT  
 THICKNESS: 4.00"

**REFERENCE MARKER**

NORTHING: 11107.51'  
 EASTING: 9417.48'  
 ELEVATION: 245.62'  
 LOCATION: CENTER OF UTILITY  
 MARKED BY: NAIL & DISK  
 STATION:  
 OFFSET: -  
 OFFSET FROM:

REMARKS:  
 OPENED TESTHOLE ON PREMARK. FOUND 4-IN VCP SEWER LATERAL PIPE AT -6.20FT.

REVISION NOTES:

REVIEWED DATE: 7/26/2022

CHECKED DATE: 7/26/2022

REVISION DATE:

REVIEWED BY: rh

CHECKED BY: rh



# TEST HOLE DATA REPORT

TEST HOLE NO: TH14  
 TEST HOLE DATE: 7/8/2022  
 PROJECT NO: CA17300101  
 CLIENT: COUNTY OF FRESNO  
 PROJECT: ATP BIOLA



5622 Research Drive Suite A  
 Huntington Beach, California 92649  
 TEL: 714.487.5780  
 www.T2ue.com

CLIENT TEST HOLE NO: TH14  
 SUE CREW/TRUCK NO: SA/JDW/550603  
 CITY, COUNTY: BIOLA, FRESNO, CA  
 LOCATION/INTERSECTION: BIOLA N/O D STREET

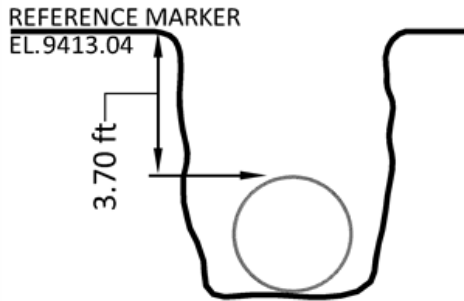
**MAP**



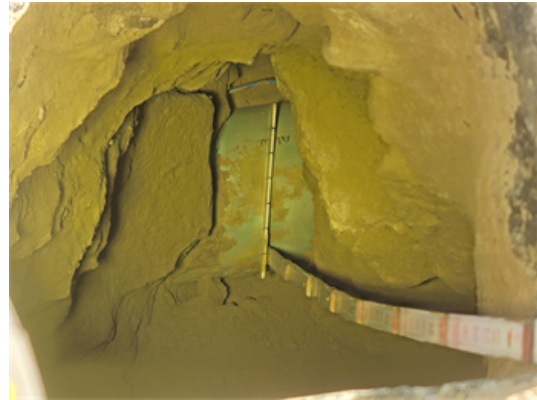
**SITE PHOTO - FACING NORTH**



**CROSS SECTION - NOT TO SCALE**



**TEST HOLE - UTILITY - FACING NORTH**



DISCLAIMER: ADDITIONAL MATERIAL AND/OR UTILITIES MAY EXIST BELOW APPARENT BOTTOM

UTILITY DESCRIPTION		REFERENCE MARKER	
UTILITY TYPE	WATER MAIN	NORTHING	11209.96'
UTILITY MATERIAL	PLASTIC (PVC, PE, HDPE)	EASTING	-
UTILITY DIRECTION	EAST - WEST	ELEVATION	9413.04'
UTILITY WIDTH (FIELD)	6.00"	LOCATION	CENTER OF UTILITY
UTILITY WIDTH (RECORD)		MARKED BY	NAIL & CAP
APPARENT UTILITY OWNER	UNKNOWN	STATION	
<b>DEPTH FROM REFERENCE MARKER</b>		OFFSET	-
TOP OF UTILITY	3.70'	OFFSET FROM	
BOTTOM OF UTILITY	-		
<b>ELEVATION OF UTILITY</b>			
TOP OF UTILITY	9409.34'		
APPARENT BOTTOM OF UTILITY	-		
<b>SURFACE</b>			
TYPE	ASPHALT		
THICKNESS	8.00"		

REMARKS:  
 OPENED TESTHOLE ON PREMARK. FOUND 6-IN PLASTIC WATERLINE AT -3.70FT.

REVISION NOTES:

REVIEWED DATE: <u>7/26/2022</u>	CHECKED DATE: <u>7/26/2022</u>	REVISION DATE:
REVIEWED BY: <u>rh</u>	CHECKED BY: <u>rh</u>	

# TEST HOLE DATA REPORT

TEST HOLE NO: TH15  
 TEST HOLE DATE: 7/8/2022  
 PROJECT NO: CA17300101  
 CLIENT: COUNTY OF FRESNO  
 PROJECT: ATP BIOLA



5622 Research Drive Suite A  
 Huntington Beach, California 92649  
 TEL: 714.487.5780  
 www.T2ue.com

CLIENT TEST HOLE NO: TH15  
 SUE CREW/TRUCK NO: SA/JDW/550603  
 CITY, COUNTY: BIOLA, FRESNO, CA  
 LOCATION/INTERSECTION: BIOLA & C STREET

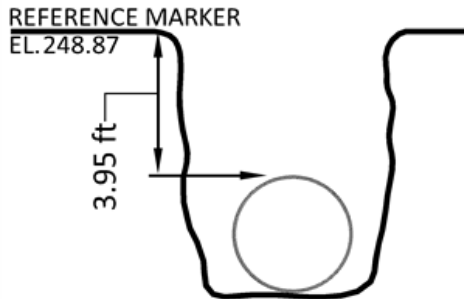
**MAP**



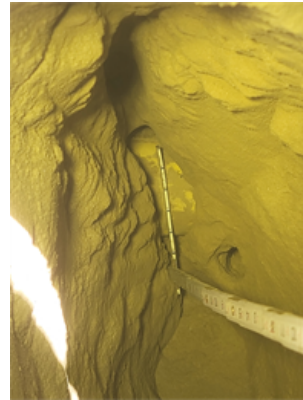
**SITE PHOTO - FACING NORTH**



**CROSS SECTION - NOT TO SCALE**



**TEST HOLE - UTILITY - FACING NORTH**



DISCLAIMER: ADDITIONAL MATERIAL AND/OR UTILITIES MAY EXIST BELOW APPARENT BOTTOM

UTILITY DESCRIPTION		REFERENCE MARKER	
UTILITY TYPE	GAS MAIN/PIPELINE	NORTHING	11390.94'
UTILITY MATERIAL	PLASTIC (PVC, PE, HDPE)	EASTING	9419.31'
UTILITY DIRECTION	NORTH - SOUTH	ELEVATION	248.87'
UTILITY WIDTH (FIELD)	4.00"	LOCATION	CENTER OF UTILITY
UTILITY WIDTH (RECORD)	4.00"	MARKED BY	NAIL & DISK
APPARENT UTILITY OWNER	PG&E	STATION	
<b>DEPTH FROM REFERENCE MARKER</b>		OFFSET	-
TOP OF UTILITY	3.95'	OFFSET FROM	
BOTTOM OF UTILITY	-		
<b>ELEVATION OF UTILITY</b>			
TOP OF UTILITY	244.92'		
APPARENT BOTTOM OF UTILITY	-		
<b>SURFACE</b>			
TYPE	ASPHALT		
THICKNESS	5.00"		

REMARKS:  
 OPENED TESTHOLE ON PREMARK. FOUND 4-IN PLASTIC GAS LINE AT -3.95FT.

REVISION NOTES:

REVIEWED DATE: <u>7/26/2022</u>	CHECKED DATE: <u>7/26/2022</u>	REVISION DATE:
REVIEWED BY: <u>rh</u>	CHECKED BY: <u>rh</u>	

# TEST HOLE DATA REPORT

TEST HOLE NO: TH16  
 TEST HOLE DATE: 7/8/2022  
 PROJECT NO: CA17300101  
 CLIENT: COUNTY OF FRESNO  
 PROJECT: ATP BIOLA



5622 Research Drive Suite A  
 Huntington Beach, California 92649  
 TEL: 714.487.5780  
 www.T2ue.com

CLIENT TEST HOLE NO: TH16  
 SUE CREW/TRUCK NO: SA/JDW/550603  
 CITY, COUNTY: BIOLA, FRESNO, CA

LOCATION/INTERSECTION: BIOLA & C STREET

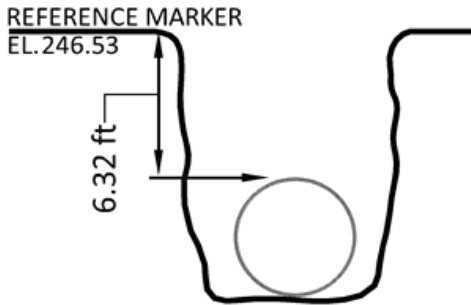
**MAP**



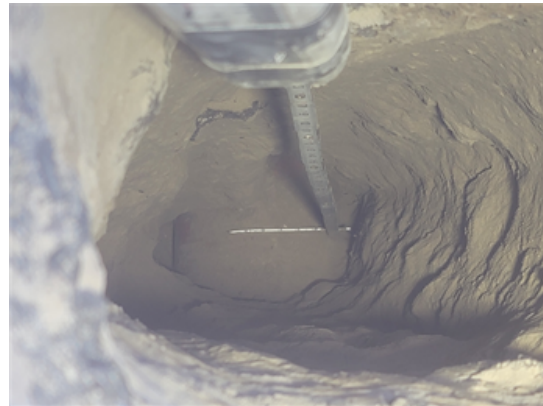
**SITE PHOTO - FACING NORTH**



**CROSS SECTION - NOT TO SCALE**



**TEST HOLE - UTILITY - FACING NORTH**



DISCLAIMER: ADDITIONAL MATERIAL AND/OR UTILITIES MAY EXIST BELOW APPARENT BOTTOM

**UTILITY DESCRIPTION**

UTILITY TYPE: SANITARY SEWER  
 UTILITY MATERIAL: CLAY  
 UTILITY DIRECTION: NORTH - SOUTH  
 UTILITY WIDTH (FIELD): 10.00"  
 UTILITY WIDTH (RECORD):  
 APPARENT UTILITY OWNER: UNKNOWN

**DEPTH FROM REFERENCE MARKER**

TOP OF UTILITY: 6.32'  
 BOTTOM OF UTILITY: -

**ELEVATION OF UTILITY**

TOP OF UTILITY: 240.21'  
 APPARENT BOTTOM OF UTILITY: -

**SURFACE**

TYPE: ASPHALT  
 THICKNESS: 5.00"

**REFERENCE MARKER**

NORTHING: 11390.74'  
 EASTING: 9420.78'  
 ELEVATION: 246.53'  
 LOCATION: CENTER OF UTILITY  
 MARKED BY: NAIL & DISK  
 STATION:  
 OFFSET: -  
 OFFSET FROM:

REMARKS:  
 OPENED TESTHOLE ON PREMARK. FOUND 10-IN VCP SEWER PIPE AT -6.32FT.  
 THIS COULD BE AN 8" NOMINAL PIPE SIZE

REVISION NOTES:

REVIEWED DATE: 7/26/2022  
 REVIEWED BY: rh

CHECKED DATE: 7/26/2022  
 CHECKED BY: rh

REVISION DATE:



# TEST HOLE DATA REPORT

TEST HOLE NO: TH18  
 TEST HOLE DATE: 7/7/2022  
 PROJECT NO: CA17300101  
 CLIENT: COUNTY OF FRESNO  
 PROJECT: ATP BIOLA



5622 Research Drive Suite A  
 Huntington Beach, California 92649  
 TEL: 714.487.5780  
 www.T2ue.com

CLIENT TEST HOLE NO: TH18  
 SUE CREW/TRUCK NO: JV/JDW/550422  
 CITY, COUNTY: BIOLA, FRESNO, CA  
 LOCATION/INTERSECTION: C STREET E/O BIOLA

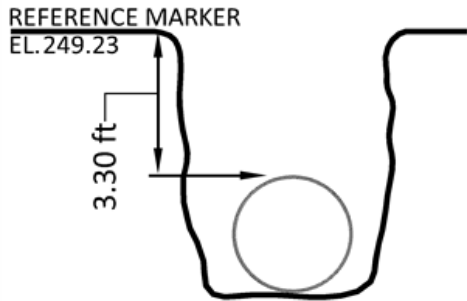
**MAP**



**SITE PHOTO - FACING SOUTH**



**CROSS SECTION - NOT TO SCALE**



**TEST HOLE - UTILITY - FACING NORTH**



DISCLAIMER: ADDITIONAL MATERIAL AND/OR UTILITIES MAY EXIST BELOW APPARENT BOTTOM

UTILITY DESCRIPTION		REFERENCE MARKER	
UTILITY TYPE	GAS MAIN/PIPELINE	NORTHING	11403.54'
UTILITY MATERIAL	PLASTIC (PVC, PE, HDPE)	EASTING	9468.58'
UTILITY DIRECTION	EAST - WEST	ELEVATION	249.23'
UTILITY WIDTH (FIELD)	4.00"	LOCATION	CENTER OF UTILITY
UTILITY WIDTH (RECORD)	4.00"	MARKED BY	ROD & CAP
APPARENT UTILITY OWNER	PGE	STATION	
<b>DEPTH FROM REFERENCE MARKER</b>		OFFSET	-
TOP OF UTILITY	3.30'	OFFSET FROM	
BOTTOM OF UTILITY	-		
<b>ELEVATION OF UTILITY</b>			
TOP OF UTILITY	245.93'		
APPARENT BOTTOM OF UTILITY	-		
<b>SURFACE</b>			
TYPE	NATURAL GROUND		
THICKNESS	-		

REMARKS:  
 OPENED TESTHOLE ON PREMARK. FOUND 4-IN PLASTIC GAS LINE AT -3.30FT.

REVISION NOTES:

REVIEWED DATE: <u>7/26/2022</u>	CHECKED DATE: <u>7/26/2022</u>	REVISION DATE:
REVIEWED BY: <u>rh</u>	CHECKED BY: <u>rh</u>	

# TEST HOLE DATA REPORT

TEST HOLE NO: TH17  
 TEST HOLE DATE: 7/8/2022  
 PROJECT NO: CA17300101  
 CLIENT: COUNTY OF FRESNO  
 PROJECT: ATP BIOLA



5622 Research Drive Suite A  
 Huntington Beach, California 92649  
 TEL: 714.487.5780  
 www.T2ue.com

CLIENT TEST HOLE NO: TH17  
 SUE CREW/TRUCK NO: SA/JDW/550603  
 CITY, COUNTY: BIOLA, FRESNO, CA  
 LOCATION/INTERSECTION: BIOLA & C STREET

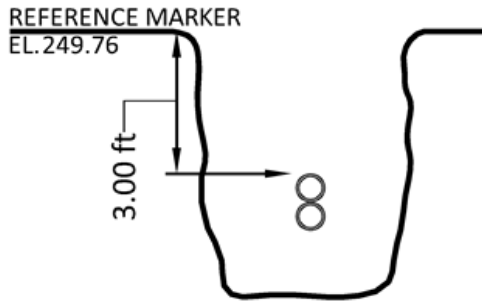
**MAP**



**SITE PHOTO - FACING NORTH**



**CROSS SECTION - NOT TO SCALE**



**TEST HOLE - UTILITY - FACING NORTH**



DISCLAIMER: ADDITIONAL MATERIAL AND/OR UTILITIES MAY EXIST BELOW APPARENT BOTTOM

UTILITY DESCRIPTION		REFERENCE MARKER	
UTILITY TYPE	CABLE TV	NORTHING	11391.58'
UTILITY MATERIAL	PLASTIC (PVC, PE, HDPE)	EASTING	9428.66'
UTILITY DIRECTION	NORTH - SOUTH	ELEVATION	249.76'
UTILITY WIDTH (FIELD)	2.00"	LOCATION	CENTER OF UTILITY
UTILITY WIDTH (RECORD)		MARKED BY	NAIL & DISK
APPARENT UTILITY OWNER	UNKNOWN	STATION	
<b>DEPTH FROM REFERENCE MARKER</b>		OFFSET	-
TOP OF UTILITY	3.00'	OFFSET FROM	
BOTTOM OF UTILITY	-		
<b>ELEVATION OF UTILITY</b>			
TOP OF UTILITY	246.76'		
APPARENT BOTTOM OF UTILITY	-		
<b>SURFACE</b>			
TYPE	ASPHALT		
THICKNESS	3.00"		

REMARKS:  
 OPENED TESTHOLE ON PREMARK. FOUND (2) 2-IN PLASTIC CATV CONDUITS STACKED VERTICALLY AT -3.00FT.

REVISION NOTES:

REVIEWED DATE: <u>7/26/2022</u>	CHECKED DATE: <u>7/26/2022</u>	REVISION DATE:
REVIEWED BY: <u>rh</u>	CHECKED BY: <u>rh</u>	

# TEST HOLE DATA REPORT

TEST HOLE NO: TH18  
 TEST HOLE DATE: 7/7/2022  
 PROJECT NO: CA17300101  
 CLIENT: COUNTY OF FRESNO  
 PROJECT: ATP BIOLA



5622 Research Drive Suite A  
 Huntington Beach, California 92649  
 TEL: 714.487.5780  
 www.T2ue.com

CLIENT TEST HOLE NO: TH18  
 SUE CREW/TRUCK NO: JV/JDW/550422  
 CITY, COUNTY: BIOLA, FRESNO, CA  
 LOCATION/INTERSECTION: C STREET E/O BIOLA

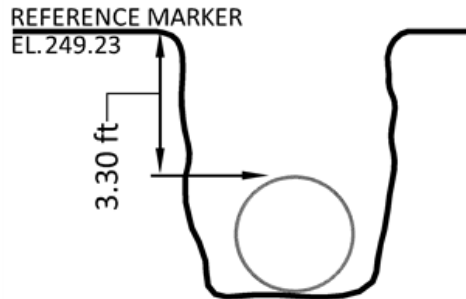
**MAP**



**SITE PHOTO - FACING SOUTH**



**CROSS SECTION - NOT TO SCALE**



**TEST HOLE - UTILITY - FACING NORTH**



DISCLAIMER: ADDITIONAL MATERIAL AND/OR UTILITIES MAY EXIST BELOW APPARENT BOTTOM

UTILITY DESCRIPTION		REFERENCE MARKER	
UTILITY TYPE	GAS MAIN/PIPELINE	NORTHING	11403.54'
UTILITY MATERIAL	PLASTIC (PVC, PE, HDPE)	EASTING	9468.58'
UTILITY DIRECTION	EAST - WEST	ELEVATION	249.23'
UTILITY WIDTH (FIELD)	4.00"	LOCATION	CENTER OF UTILITY
UTILITY WIDTH (RECORD)	4.00"	MARKED BY	ROD & CAP
APPARENT UTILITY OWNER	PGE	STATION	
<b>DEPTH FROM REFERENCE MARKER</b>		OFFSET	-
TOP OF UTILITY	3.30'	OFFSET FROM	
BOTTOM OF UTILITY	-		
<b>ELEVATION OF UTILITY</b>			
TOP OF UTILITY	245.93'		
APPARENT BOTTOM OF UTILITY	-		
<b>SURFACE</b>			
TYPE	NATURAL GROUND		
THICKNESS	-		

REMARKS:  
 OPENED TESTHOLE ON PREMARK. FOUND 4-IN PLASTIC GAS LINE AT -3.30FT.

REVISION NOTES:

REVIEWED DATE: <u>7/26/2022</u>	CHECKED DATE: <u>7/26/2022</u>	REVISION DATE:
REVIEWED BY: <u>rh</u>	CHECKED BY: <u>rh</u>	



# TEST HOLE DATA REPORT

TEST HOLE NO: TH19 (CANCELLED)  
 TEST HOLE DATE: 7/8/2022  
 PROJECT NO: CA17300101  
 CLIENT: COUNTY OF FRESNO  
 PROJECT: ATP BIOLA



5622 Research Drive Suite A  
 Huntington Beach, California 92649  
 TEL: 714.487.5780  
 www.T2ue.com

CLIENT TEST HOLE NO: TH19 (CANCELLED)  
 SUE CREW/TRUCK NO: JV/JW/550422  
 CITY,COUNTY: BIOLA, FRESNO, CA  
 LOCATION/INTERSECTION:  
C STREET E/O BIOLA

### MAP



### SITE PHOTO

### CROSS SECTION - NOT TO SCALE



### TEST HOLE - UTILITY

DISCLAIMER: ADDITIONAL MATERIAL AND/OR UTILITIES MAY EXIST BELOW APPARENT BOTTOM

UTILITY DESCRIPTION	REFERENCE MARKER
UTILITY TYPE	GAS MAIN/PIPELINE
UTILITY MATERIAL	NORTHING
UTILITY DIRECTION	EASTING
UTILITY WIDTH (FIELD)	ELEVATION
UTILITY WIDTH (RECORD)	LOCATION
APPARENT UTILITY OWNER	MARKED BY
	STATION
<b>DEPTH FROM REFERENCE MARKER</b>	OFFSET
TOP OF UTILITY	OFFSET FROM
BOTTOM OF UTILITY	
<b>ELEVATION OF UTILITY</b>	
TOP OF UTILITY	
APPARENT BOTTOM OF UTILITY	
<b>SURFACE</b>	
TYPE	NATURAL GROUND
THICKNESS	

REMARKS:  
 NO SIGNAL OBTAINED WITH DESIGNATING OR GPR. CANCELLED BY JAKE WAGNER.

REVISION NOTES:

REVIEWED DATE: <u>7/26/2022</u>	CHECKED DATE: <u>7/26/2022</u>	REVISION DATE:
REVIEWED BY: <u>rh</u>	CHECKED BY: <u>rh</u>	

# TEST HOLE DATA REPORT

TEST HOLE NO: TH20  
 TEST HOLE DATE: 7/7/2022  
 PROJECT NO: CA17300101  
 CLIENT: COUNTY OF FRESNO  
 PROJECT: ATP BIOLA



5622 Research Drive Suite A  
 Huntington Beach, California 92649  
 TEL: 714.487.5780  
 www.T2ue.com

CLIENT TEST HOLE NO: TH20  
 SUE CREW/TRUCK NO: JV/JDW/550422  
 CITY, COUNTY: BIOLA, FRESNO, CA  
 LOCATION/INTERSECTION: C STREET E/O BIOLA

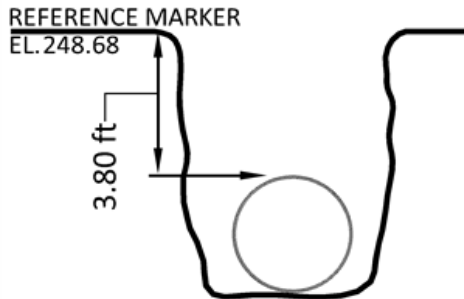
**MAP**



**SITE PHOTO - FACING SOUTH**



**CROSS SECTION - NOT TO SCALE**



**TEST HOLE - UTILITY - FACING NORTH**



DISCLAIMER: ADDITIONAL MATERIAL AND/OR UTILITIES MAY EXIST BELOW APPARENT BOTTOM

UTILITY DESCRIPTION		REFERENCE MARKER	
UTILITY TYPE	WATER MAIN	NORTHING	11393.47'
UTILITY MATERIAL	ASBESTOS CEMENT (TRANSITE)	EASTING	9468.42'
UTILITY DIRECTION	EAST - WEST	ELEVATION	248.68'
UTILITY WIDTH (FIELD)	6.00"	LOCATION	CENTER OF UTILITY
UTILITY WIDTH (RECORD)		MARKED BY	NAIL & DISK
APPARENT UTILITY OWNER	UNKNOWN	STATION	
<b>DEPTH FROM REFERENCE MARKER</b>		OFFSET	-
TOP OF UTILITY	3.80'	OFFSET FROM	
BOTTOM OF UTILITY	-		
<b>ELEVATION OF UTILITY</b>			
TOP OF UTILITY	244.88'		
APPARENT BOTTOM OF UTILITY	-		
<b>SURFACE</b>			
TYPE	ASPHALT		
THICKNESS	6.00"		

REMARKS:  
 OPENED TESTHOLE ON PREMARK. FOUND 6-IN ACP WATER LINE AT -3.80FT.

REVISION NOTES:

REVIEWED DATE: <u>7/26/2022</u>	CHECKED DATE: <u>7/26/2022</u>	REVISION DATE:
REVIEWED BY: <u>rh</u>	CHECKED BY: <u>rh</u>	

# TEST HOLE DATA REPORT

TEST HOLE NO: TH21  
 TEST HOLE DATE: 7/7/2022  
 PROJECT NO: CA17300101  
 CLIENT: COUNTY OF FRESNO  
 PROJECT: ATP BIOLA



5622 Research Drive Suite A  
 Huntington Beach, California 92649  
 TEL: 714.487.5780  
 www.T2ue.com

CLIENT TEST HOLE NO: TH21  
 SUE CREW/TRUCK NO: JV/JDW/550422  
 CITY, COUNTY: BIOLA, FRESNO, CA  
 LOCATION/INTERSECTION: C STREET E/O BIOLA

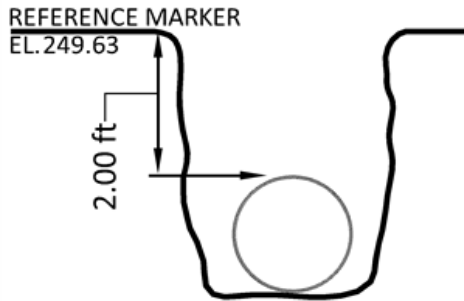
**MAP**



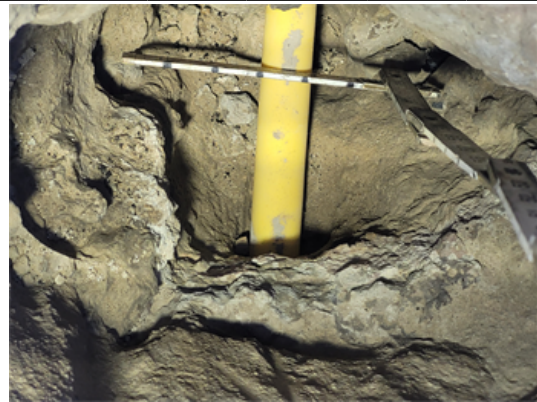
**SITE PHOTO - FACING NORTH**



**CROSS SECTION - NOT TO SCALE**



**TEST HOLE - UTILITY - FACING NORTH**



DISCLAIMER: ADDITIONAL MATERIAL AND/OR UTILITIES MAY EXIST BELOW APPARENT BOTTOM

UTILITY DESCRIPTION		REFERENCE MARKER	
UTILITY TYPE	GAS SERVICE	NORTHING	11370.47'
UTILITY MATERIAL	PLASTIC (PVC, PE, HDPE)	EASTING	9468.05'
UTILITY DIRECTION	NORTH - SOUTH	ELEVATION	249.63'
UTILITY WIDTH (FIELD)	1.00"	LOCATION	CENTER OF UTILITY
UTILITY WIDTH (RECORD)		MARKED BY	NAIL & DISK
APPARENT UTILITY OWNER	PGE	STATION	
<b>DEPTH FROM REFERENCE MARKER</b>		OFFSET	-
TOP OF UTILITY	2.00'	OFFSET FROM	
BOTTOM OF UTILITY	-		
<b>ELEVATION OF UTILITY</b>			
TOP OF UTILITY	247.63'		
APPARENT BOTTOM OF UTILITY	-		
<b>SURFACE</b>			
TYPE	ASPHALT		
THICKNESS	4.00"		

REMARKS:  
 OPENED TESTHOLE ON PREMARK. FOUND 1-IN PLASTIC GAS LINE AT -2.00FT.

REVISION NOTES:

REVIEWED DATE: <u>7/26/2022</u>	CHECKED DATE: <u>7/26/2022</u>	REVISION DATE:
REVIEWED BY: <u>rh</u>	CHECKED BY: <u>rh</u>	



# TEST HOLE DATA REPORT

TEST HOLE NO: TH22  
 TEST HOLE DATE: 7/8/2022  
 PROJECT NO: CA17300101  
 CLIENT: COUNTY OF FRESNO  
 PROJECT: ATP BIOLA



5622 Research Drive Suite A  
 Huntington Beach, California 92649  
 TEL: 714.487.5780  
 www.T2ue.com

CLIENT TEST HOLE NO: TH22  
 SUE CREW/TRUCK NO: JV/JW/550422  
 CITY, COUNTY: BIOLA, FRESNO, CA  
 LOCATION/INTERSECTION: C STREET E/O BIOLA

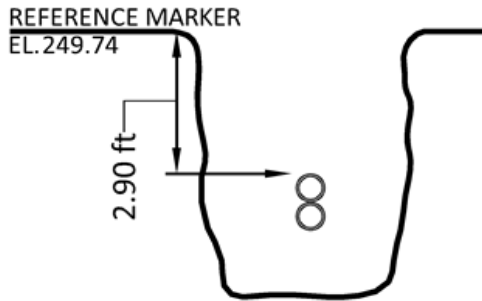
**MAP**



**SITE PHOTO - FACING SOUTH**



**CROSS SECTION - NOT TO SCALE**



**TEST HOLE - UTILITY - FACING NORTH**



DISCLAIMER: ADDITIONAL MATERIAL AND/OR UTILITIES MAY EXIST BELOW APPARENT BOTTOM

UTILITY DESCRIPTION		REFERENCE MARKER	
UTILITY TYPE	TELECOM	NORTHING	11370.58'
UTILITY MATERIAL	PLASTIC (PVC, PE, HDPE)	EASTING	9467.96'
UTILITY DIRECTION	EAST - WEST	ELEVATION	249.74'
UTILITY WIDTH (FIELD)	2.00"	LOCATION	CENTER OF UTILITY
UTILITY WIDTH (RECORD)		MARKED BY	NAIL & DISK
APPARENT UTILITY OWNER	SEB	STATION	
<b>DEPTH FROM REFERENCE MARKER</b>		OFFSET	-
TOP OF UTILITY	2.90'	OFFSET FROM	
BOTTOM OF UTILITY	-		
<b>ELEVATION OF UTILITY</b>			
TOP OF UTILITY	246.84'		
APPARENT BOTTOM OF UTILITY	-		
<b>SURFACE</b>			
TYPE	NATURAL GROUND		
THICKNESS	-		

REMARKS:  
 OPENED TESTHOLE ON PREMARK. FOUND (2) 2-IN PLASTIC TELCOM CONDUITS STACKED VERTICALLY AT -2.90FT.

REVISION NOTES:

REVIEWED DATE: <u>7/26/2022</u>	CHECKED DATE: <u>7/26/2022</u>	REVISION DATE:
REVIEWED BY: <u>rh</u>	CHECKED BY: <u>rh</u>	

# TEST HOLE DATA REPORT

TEST HOLE NO: TH23  
 TEST HOLE DATE: 7/8/2022  
 PROJECT NO: CA17300101  
 CLIENT: COUNTY OF FRESNO  
 PROJECT: ATP BIOLA



5622 Research Drive Suite A  
 Huntington Beach, California 92649  
 TEL: 714.487.5780  
 www.T2ue.com

CLIENT TEST HOLE NO: TH23  
 SUE CREW/TRUCK NO: JV/JW/550422  
 CITY, COUNTY: BIOLA, FRESNO, CA  
 LOCATION/INTERSECTION: C E/O BIOLA

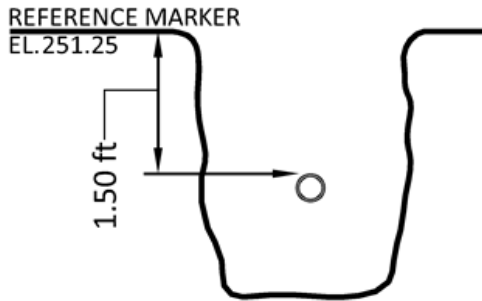
**MAP**



**SITE PHOTO - FACING NORTH**



**CROSS SECTION - NOT TO SCALE**



**TEST HOLE - UTILITY - FACING NORTH**



DISCLAIMER: ADDITIONAL MATERIAL AND/OR UTILITIES MAY EXIST BELOW APPARENT BOTTOM

UTILITY DESCRIPTION		REFERENCE MARKER	
UTILITY TYPE	TELECOM	NORTHING	11390.92'
UTILITY MATERIAL	PLASTIC (PVC, PE, HDPE)	EASTING	9555.49'
UTILITY DIRECTION	EAST - WEST	ELEVATION	251.25'
UTILITY WIDTH (FIELD)	2.00"	LOCATION	CENTER OF UTILITY
UTILITY WIDTH (RECORD)		MARKED BY	NAIL & DISK
APPARENT UTILITY OWNER	SEB	STATION	
<b>DEPTH FROM REFERENCE MARKER</b>		OFFSET	-
TOP OF UTILITY	1.50'	OFFSET FROM	
BOTTOM OF UTILITY	-		
<b>ELEVATION OF UTILITY</b>			
TOP OF UTILITY	249.75'		
APPARENT BOTTOM OF UTILITY	-		
<b>SURFACE</b>			
TYPE	ASPHALT		
THICKNESS	5.00"		

REMARKS:  
 OPENED TESTHOLE ON PREMARK. FOUND 2-IN PLASTIC TELCOM CONDUIT AT -1.50FT.

REVISION NOTES:

REVIEWED DATE: <u>7/26/2022</u>	CHECKED DATE: <u>7/26/2022</u>	REVISION DATE:
REVIEWED BY: <u>rh</u>	CHECKED BY: <u>rh</u>	

# TEST HOLE DATA REPORT

TEST HOLE NO: TH24 (DH)  
 TEST HOLE DATE: 7/8/2022  
 PROJECT NO: CA17300101  
 CLIENT: COUNTY OF FRESNO  
 PROJECT: ATP BIOLA

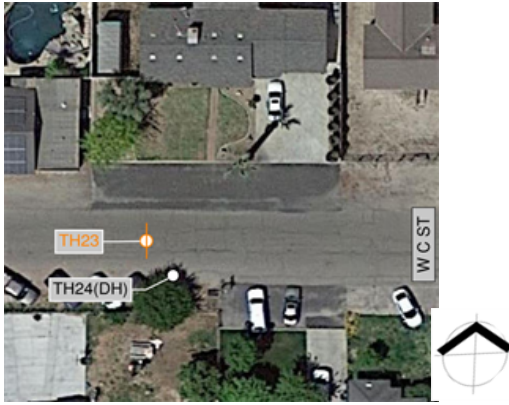


5622 Research Drive Suite A  
 Huntington Beach, California 92649  
 TEL: 714.487.5780  
 www.T2ue.com

CLIENT TEST HOLE NO: TH24 (DH)  
 SUE CREW/TRUCK NO: SA/JDW/550603  
 CITY,COUNTY: BIOLA, FRESNO, CA

LOCATION/INTERSECTION:  
 C STREET E/O BIOLA

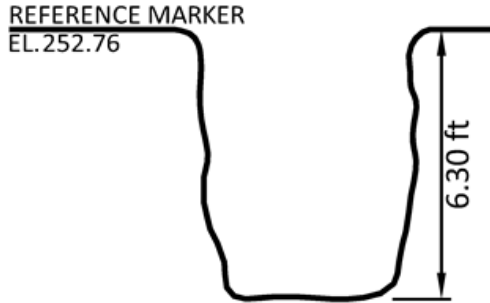
**MAP**



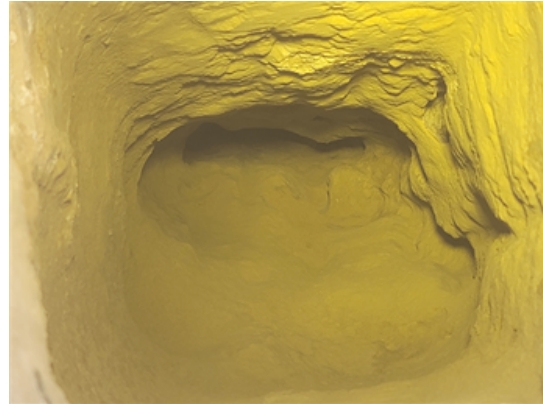
**SITE PHOTO - FACING NORTH**



**CROSS SECTION - NOT TO SCALE**



**TEST HOLE - UTILITY - FACING NORTH**



DISCLAIMER: ADDITIONAL MATERIAL AND/OR UTILITIES MAY EXIST BELOW APPARENT BOTTOM

**UTILITY DESCRIPTION**

UTILITY TYPE: EXPLORATORY  
 UTILITY MATERIAL: -  
 UTILITY DIRECTION: -  
 UTILITY WIDTH (FIELD): -  
 UTILITY WIDTH (RECORD): -  
 APPARENT UTILITY OWNER: UNKNOWN

**DEPTH FROM REFERENCE MARKER**

TOP OF UTILITY: -  
 BOTTOM OF UTILITY: -

**ELEVATION OF UTILITY**

TOP OF UTILITY: -  
 APPARENT BOTTOM OF UTILITY: -

**SURFACE**

TYPE: ASPHALT  
 THICKNESS: 3.00"

**REFERENCE MARKER**

NORTHING: 11390.80'  
 EASTING: 9568.23'  
 ELEVATION: 252.76'  
 LOCATION: CENTER OF UTILITY  
 MARKED BY: NAIL & DISK  
 STATION: -  
 OFFSET: -  
 OFFSET FROM: -

REMARKS:  
 OPENED TESTHOLE ON PREMARK ON MEASUREMENTS GIVEN ON EXHIBIT IN SEARCH OF SEWER LATERAL. CLEARED DOWN TO -6.30FT THRU PACKED CLAY AND ROCKS. NO UTILITY FOUND. THIS IS A DRY HOLE.

REVISION NOTES:

REVIEWED DATE: 7/26/2022

CHECKED DATE: 7/26/2022

REVISION DATE:

REVIEWED BY: rh

CHECKED BY: rh



# TEST HOLE DATA REPORT

TEST HOLE NO: TH25  
 TEST HOLE DATE: 7/19/2022  
 PROJECT NO: CA17300101  
 CLIENT: COUNTY OF FRESNO  
 PROJECT: ATP BIOLA



5622 Research Drive Suite A  
 Huntington Beach, California 92649  
 TEL: 714.487.5780  
 www.T2ue.com

CLIENT TEST HOLE NO: TH25  
 SUE CREW/TRUCK NO: SA/CG/551706  
 CITY,COUNTY: BIOLA, FRESNO, CA

LOCATION/INTERSECTION:  
C- STREET

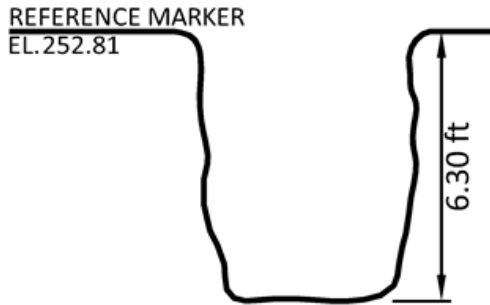
**MAP**



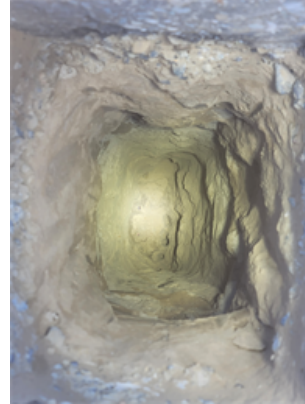
**SITE PHOTO - FACING NORTH**



**CROSS SECTION - NOT TO SCALE**



**TEST HOLE - UTILITY - FACING NORTH**



DISCLAIMER: ADDITIONAL MATERIAL AND/OR UTILITIES MAY EXIST BELOW APPARENT BOTTOM

**UTILITY DESCRIPTION**

UTILITY TYPE: EXPLORATORY  
 UTILITY MATERIAL: -  
 UTILITY DIRECTION: -  
 UTILITY WIDTH (FIELD): -  
 UTILITY WIDTH (RECORD): -  
 APPARENT UTILITY OWNER: UNK  
**DEPTH FROM REFERENCE MARKER**  
 TOP OF UTILITY: -  
 BOTTOM OF UTILITY: -

**REFERENCE MARKER**

NORTHING: 11390.38'  
 EASTING: 9680.32'  
 ELEVATION: 252.81'  
 LOCATION: CENTER OF HOLE  
 MARKED BY: NAIL & DISK  
 STATION: -  
 OFFSET: -  
 OFFSET FROM: -

**ELEVATION OF UTILITY**

TOP OF UTILITY: -  
 APPARENT BOTTOM OF UTILITY: -

**SURFACE**

TYPE: ASPHALT  
 THICKNESS: 4.00"

REMARKS:  
 OPENED UP TH ON SCALED LOCATION BASED ON RECORDS, WITH GIVEN MEASUREMENTS. THIS ALSO LINED UP WITH THE CLEANOUT THAT WAS SEEN ON THE PROPERTY. ENCOUNTERED VERY HARD DRY SOIL AT 2 FT. HAD TO USE 30 LBS JACKHAMMER DOWN TO 5.30 FT. CLEARED DOWN TO 6.30, NO SEWER LATERAL FOUND, THIS IS A DRY HOLE AND NAIL&DISK IS LOCATED AT THE

REVISION NOTES:

REVIEWED DATE: 7/26/2022

CHECKED DATE: 7/26/2022

REVISION DATE:

REVIEWED BY: rh

CHECKED BY: rh

# TEST HOLE DATA REPORT

TEST HOLE NO: TH26  
 TEST HOLE DATE: 7/8/2022  
 PROJECT NO: CA17300101  
 CLIENT: COUNTY OF FRESNO  
 PROJECT: ATP BIOLA



5622 Research Drive Suite A  
 Huntington Beach, California 92649  
 TEL: 714.487.5780  
 www.T2ue.com

CLIENT TEST HOLE NO: TH26  
 SUE CREW/TRUCK NO: JV/JW/550411  
 CITY,COUNTY: BIOLA, FRESNO, CA

LOCATION/INTERSECTION:  
C STREET W/O 7TH STREET

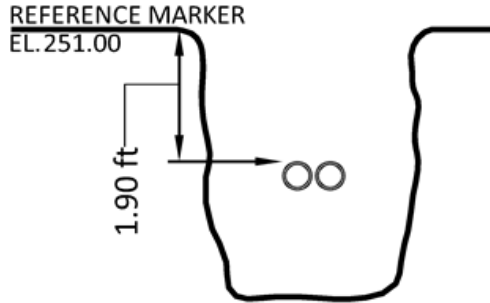
**MAP**



**SITE PHOTO - FACING NORTH**



**CROSS SECTION - NOT TO SCALE**



**TEST HOLE - UTILITY - FACING NORTH**



DISCLAIMER: ADDITIONAL MATERIAL AND/OR UTILITIES MAY EXIST BELOW APPARENT BOTTOM

**UTILITY DESCRIPTION**

UTILITY TYPE: TELECOM  
 UTILITY MATERIAL: UNKNOWN  
 UTILITY DIRECTION: EAST - WEST  
 UTILITY WIDTH (FIELD): 4.00"  
 UTILITY WIDTH (RECORD):  
 APPARENT UTILITY OWNER: SEB

**REFERENCE MARKER**

NORTHING: 11389.29'  
 EASTING: 9693.79'  
 ELEVATION: 251.00'  
 LOCATION: CENTER OF UTILITY  
 MARKED BY: NAIL & DISK  
 STATION:  
 OFFSET: -  
 OFFSET FROM:

**DEPTH FROM REFERENCE MARKER**

TOP OF UTILITY: 1.90'  
 BOTTOM OF UTILITY: -

**ELEVATION OF UTILITY**

TOP OF UTILITY: 249.10'  
 APPARENT BOTTOM OF UTILITY: -

**SURFACE**

TYPE: ASPHALT  
 THICKNESS: 5.00"

REMARKS:  
 OPENED TESTHOLE ON PREMARK. FOUND (2) 2-IN PLASTIC TELCOM CONDUITS AT -1.90FT.

REVISION NOTES:

REVIEWED DATE: 7/26/2022

CHECKED DATE: 7/26/2022

REVISION DATE:

REVIEWED BY: rh

CHECKED BY: rh

# TEST HOLE DATA REPORT

TEST HOLE NO: TH27 (DH)  
 TEST HOLE DATE: 7/8/2022  
 PROJECT NO: CA17300101  
 CLIENT: COUNTY OF FRESNO  
 PROJECT: ATP BIOLA



5622 Research Drive Suite A  
 Huntington Beach, California 92649  
 TEL: 714.487.5780  
 www.T2ue.com

CLIENT TEST HOLE NO: TH27 (DH)  
 SUE CREW/TRUCK NO: JV/JW/550422  
 CITY,COUNTY: BIOLA, FRESNO, CA

LOCATION/INTERSECTION:  
C STREET W/O 7TH STREET

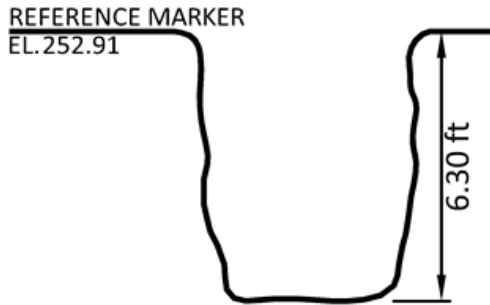
**MAP**



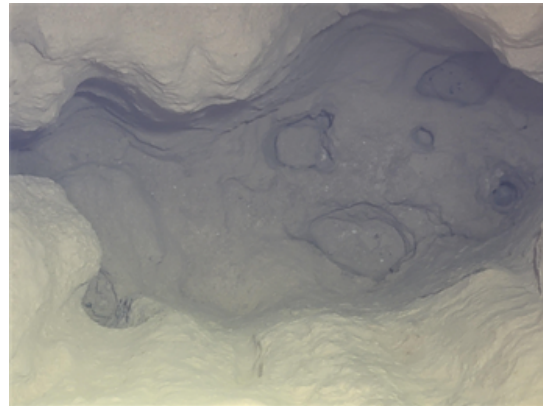
**SITE PHOTO - FACING SOUTH**



**CROSS SECTION - NOT TO SCALE**



**TEST HOLE - UTILITY - FACING NORTH**



DISCLAIMER: ADDITIONAL MATERIAL AND/OR UTILITIES MAY EXIST BELOW APPARENT BOTTOM

**UTILITY DESCRIPTION**

UTILITY TYPE: SANITARY SEWER  
 UTILITY MATERIAL: -  
 UTILITY DIRECTION: -  
 UTILITY WIDTH (FIELD): -  
 UTILITY WIDTH (RECORD): -  
 APPARENT UTILITY OWNER: UNKNOWN

**DEPTH FROM REFERENCE MARKER**

TOP OF UTILITY: -  
 BOTTOM OF UTILITY: -

**ELEVATION OF UTILITY**

TOP OF UTILITY: -  
 APPARENT BOTTOM OF UTILITY: -

**SURFACE**

TYPE: ASPHALT  
 THICKNESS: 5.00"

**REFERENCE MARKER**

NORTHING: 11389.98'  
 EASTING: 9778.03'  
 ELEVATION: 252.91'  
 LOCATION: CENTER OF PH  
 MARKED BY: NAIL & DISK  
 STATION: -  
 OFFSET: -  
 OFFSET FROM: -

REMARKS:  
 OPENED TESTHOLE ON PREMARK MEASUREMENT GIVEN ON EXHIBIT IN SEARCH OF SEWER LATERAL. CLEARED DOWN TO -6.30FT THRU PACKED CLAY AND ROCKS. NO UTILITY FOUND. THIS IS A DRY HOLE.

REVISION NOTES:

REVIEWED DATE: 7/26/2022

CHECKED DATE: 7/26/2022

REVISION DATE:

REVIEWED BY: rh

CHECKED BY: rh



# TEST HOLE DATA REPORT

TEST HOLE NO: TH28 (DH)  
 TEST HOLE DATE: 7/21/2022  
 PROJECT NO: CA17300101  
 CLIENT: COUNTY OF FRESNO  
 PROJECT: ATP BIOLA



5622 Research Drive Suite A  
 Huntington Beach, California 92649  
 TEL: 714.487.5780  
 www.T2ue.com

CLIENT TEST HOLE NO: TH28 (DH)  
 SUE CREW/TRUCK NO: JW / LC/551706  
 CITY,COUNTY: BIOLA, FRESNO, CA

LOCATION/INTERSECTION:  
C STREET, W OF SEVENTH AVE

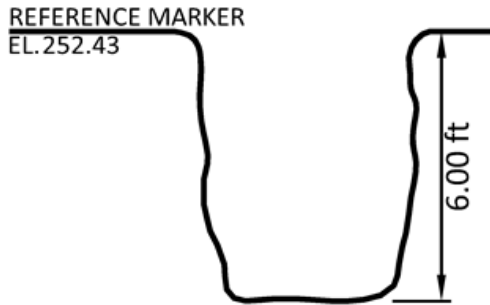
**MAP**



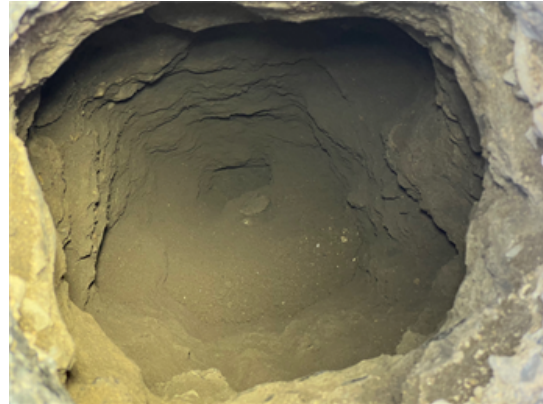
**SITE PHOTO - FACING NORTH**



**CROSS SECTION - NOT TO SCALE**



**TEST HOLE - UTILITY - FACING NORTH**



DISCLAIMER: ADDITIONAL MATERIAL AND/OR UTILITIES MAY EXIST BELOW APPARENT BOTTOM

UTILITY DESCRIPTION		REFERENCE MARKER	
UTILITY TYPE	DRY HOLE	NORTHING	11397.71'
UTILITY MATERIAL		EASTING	9923.74'
UTILITY DIRECTION		ELEVATION	252.43'
UTILITY WIDTH (FIELD)	-	LOCATION	CENTER OF TESTHOLE
UTILITY WIDTH (RECORD)		MARKED BY	NAIL & DISK
APPARENT UTILITY OWNER	UNKNOWN	STATION	
<b>DEPTH FROM REFERENCE MARKER</b>		OFFSET	-
TOP OF UTILITY	-	OFFSET FROM	
BOTTOM OF UTILITY	-		
<b>ELEVATION OF UTILITY</b>			
TOP OF UTILITY	-		
APPARENT BOTTOM OF UTILITY	-		
<b>SURFACE</b>			
TYPE	ASPHALT		
THICKNESS	6.00"		

REMARKS:  
 DRY HOLE. COULD NOT OBTAIN SIGNAL OR GPR READING FOR WATERLINE SO WE OPENED HOLE ON VALVE ALIGNMENT. WE ONLY CLEARED DOWN TO 6FT BECAUSE PREVIOUS WATERLINE WAS LESS THAN 4FT.

REVISION NOTES:

REVIEWED DATE: 7/26/2022      CHECKED DATE: 7/26/2022      REVISION DATE:  
 REVIEWED BY: rh      CHECKED BY: rh

# TEST HOLE DATA REPORT

TEST HOLE NO: TH28A (DH)  
 TEST HOLE DATE: 7/19/2022  
 PROJECT NO: CA17300101  
 CLIENT: COUNTY OF FRESNO  
 PROJECT: ATP BIOLA



5622 Research Drive Suite A  
 Huntington Beach, California 92649  
 TEL: 714.487.5780  
 www.T2ue.com

CLIENT TEST HOLE NO: TH28A (DH)  
 SUE CREW/TRUCK NO: SA/CG/551706  
 CITY,COUNTY: BIOLA, FRESNO, CA

LOCATION/INTERSECTION:  
C STREET W. OF 7TH AVE

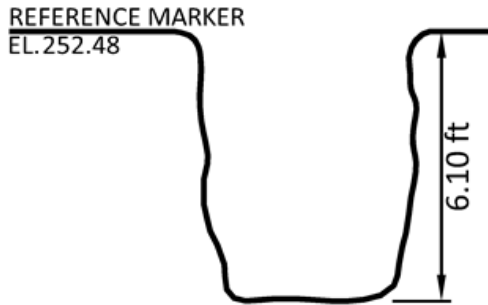
**MAP**



**SITE PHOTO - FACING NORTH**



**CROSS SECTION - NOT TO SCALE**



**TEST HOLE - UTILITY - FACING NORTH**



**DISCLAIMER: ADDITIONAL MATERIAL AND/OR UTILITIES MAY EXIST BELOW APPARENT BOTTOM**

**UTILITY DESCRIPTION**

UTILITY TYPE: EXPLORATORY  
 UTILITY MATERIAL: -  
 UTILITY DIRECTION: -  
 UTILITY WIDTH (FIELD): -  
 UTILITY WIDTH (RECORD): -  
 APPARENT UTILITY OWNER: UNK

**DEPTH FROM REFERENCE MARKER**

TOP OF UTILITY: -  
 BOTTOM OF UTILITY: -

**ELEVATION OF UTILITY**

TOP OF UTILITY: -  
 APPARENT BOTTOM OF UTILITY: -

**SURFACE**

TYPE: ASPHALT  
 THICKNESS: 4.00"

**REFERENCE MARKER**

NORTHING: 11395.89'  
 EASTING: 9924.05'  
 ELEVATION: 252.48'  
 LOCATION: CENTER OF HOLE  
 MARKED BY: NAIL & DISK  
 STATION: -  
 OFFSET: -  
 OFFSET FROM: -

**REMARKS:**

OPENED UP TH ON SCALED LOCATION BASED ON VALVE LAY OUT, MEASURED 9.3 FT SOUTH DISTANCE FROM FIRE HYDRANT SHUT-OFF VALVE +1' OFFSET DISTANCE TO THE WATER MAIN. ENCOUNTERED VERY DRY HARD SOIL, HAD TO USE 30 LBS JACKHAMMER, IN ORDER TO EXCAVATE, CLEARED DOWN TO 6.1 FT, NO UTILITY FOUND. THIS IS A DRY HOLE AND NAIL&DISK IS

**REVISION NOTES:**

REVIEWED DATE: 7/26/2022  
 REVIEWED BY: rh

CHECKED DATE: 7/26/2022  
 CHECKED BY: rh

REVISION DATE:

# TEST HOLE DATA REPORT

TEST HOLE NO: TH29  
 TEST HOLE DATE: 7/25/2022  
 PROJECT NO: CA17300101  
 CLIENT: COUNTY OF FRESNO  
 PROJECT: ATP BIOLA



5622 Research Drive Suite A  
 Huntington Beach, California 92649  
 TEL: 714.487.5780  
 www.T2ue.com

CLIENT TEST HOLE NO: TH29  
 SUE CREW/TRUCK NO: LC/JW/550603  
 CITY, COUNTY: BIOLA, FRESNO, CA

LOCATION/INTERSECTION:  
BIOLA AVE, S OF C STREET

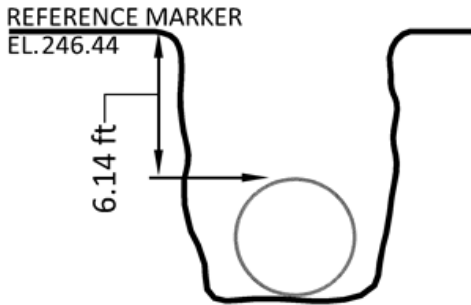
**MAP**



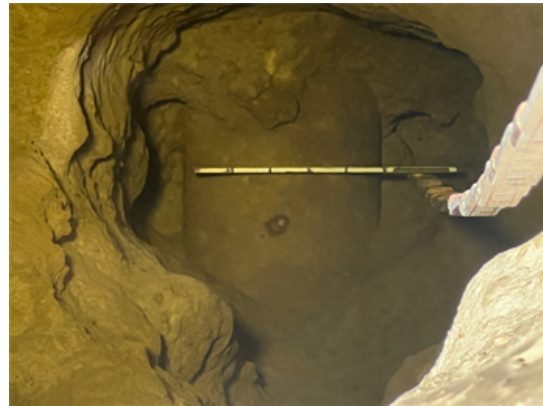
**SITE PHOTO - FACING NORTH**



**CROSS SECTION - NOT TO SCALE**



**TEST HOLE - UTILITY - FACING EAST**



DISCLAIMER: ADDITIONAL MATERIAL AND/OR UTILITIES MAY EXIST BELOW APPARENT BOTTOM

**UTILITY DESCRIPTION**

UTILITY TYPE: SANITARY SEWER  
 UTILITY MATERIAL: CLAY  
 UTILITY DIRECTION: EAST - WEST  
 UTILITY WIDTH (FIELD): 5.00"  
 UTILITY WIDTH (RECORD):  
 APPARENT UTILITY OWNER: UNK

**DEPTH FROM REFERENCE MARKER**

TOP OF UTILITY: 6.14'  
 BOTTOM OF UTILITY: -

**ELEVATION OF UTILITY**

TOP OF UTILITY: 240.30'  
 APPARENT BOTTOM OF UTILITY: -

**SURFACE**

TYPE: NATURAL GROUND  
 THICKNESS: -

**REFERENCE MARKER**

NORTHING: 11348.22'  
 EASTING: 9412.74'  
 ELEVATION: 246.44'  
 LOCATION: CENTER OF UTILITY  
 MARKED BY: NAIL & DISK  
 STATION:  
 OFFSET: -  
 OFFSET FROM:

REMARKS:  
 OPENED HOLE ON GPR MARKS AND FOUND TARGET UTILITY

REVISION NOTES:

REVIEWED DATE: 7/26/2022

CHECKED DATE: 7/26/2022

REVISION DATE:

REVIEWED BY: rh

CHECKED BY: rh