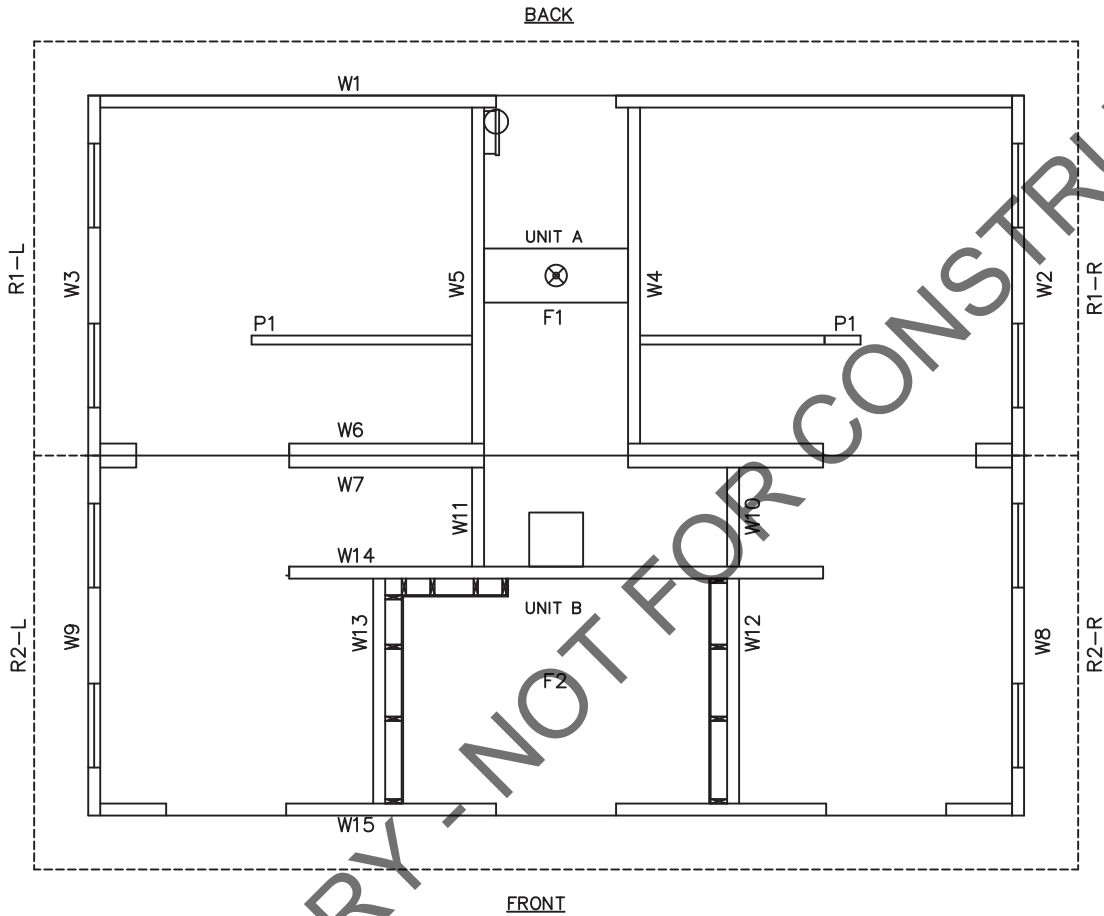


SANTIAGO

PANEL MARK NO. KEY PLAN

NOTES

1. BUILDING IS DESIGNED TO COMPLY WITH THE 2019 CALIFORNIA BUILDING STANDARDS CODE (CBCS).
2. DESIGN COMPLIES WITH THE PROVISIONS OF THE 2019 CBCS CODE FOR THE FOLLOWING LOADS:  
GROUND SNOW LOAD = 220 PSF  
FLOOR LOAD = 400 PSF  
IBC DESIGN SPECTRAL RESPONSE  $S_s = 1.309$ ,  $S_1 = 1.088$   
SITE CLASS D  
RISK CATEGORY: II  
SEISMIC DESIGN CATEGORY: E  
BEARING WALL SYSTEM  $R = 4.0$   
BASIC WIND SPEED = 150 MPH (3-SECOND GUST)  
WIND EXPOSURE C
3. CONSTRUCTION TYPE: V-B  
OCCUPANCY: U  
EXTERIOR WALLS: 1-HR RATED PER IBC TABLE 721.1(2), ITEM 4-1.1  
MINIMUM FIRE SEPARATION DISTANCE: 10'
4. CONCRETE STRENGTH  $f'_{ci} = 2500$  PSI INITIAL  $f'_c = 5000$  PSI  
FINAL AIR ENTRAINMENT  $6\% \pm 1\frac{1}{2}\%$  IN PLASTIC CONCRETE.  
REINFORCING STEEL: #3 GRADE 40, #4 AND LARGER GRADE 60  
MINIMUM LAP 18" AT SPLICES. TIE BARS WITH DOUBLE ANNEALED  
16 GA IRON WIRE. REINFORCING TO BE PLACED IN CENTER  
OF PANEL UNO.  
WELDED WIRE FABRIC(W.W.F.): 4x4xW8xW8,  $F_y=65$  KSI (OR EQUIVAL).  
COMPLY WITH ASTM A82, SMOOTH WIRE, MIN. LAP 2 SQUARES.
5. EMBEDDED ITEMS IDENTIFIED ON DRAWINGS (i.e. PS-2, R301)  
REFER TO CXT STANDARD EMBEDMENT CATALOG.
6. BACK OF PANELS TO HAVE SMOOTH TROWEL FINISH UNO.  
ALL SURFACES TO BE TEXTURED ARE NOTED ON PANEL DWG'S
7. REFER TO SEPARATE CXT INCORPORATED SPECIFICATIONS  
COVERING DESIGN, MATERIALS, PRODUCTION, AND INSTALLATION  
CRITERIA FOR SPECIFIC STYLE OF BUILDING.
8. ALL REBAR BENDS ARE TO HAVE A MINIMUM RADIUS  
OF 6x THE BAR DIAMETER
9. INSTALLATION TO MEET APPLICABLE LOCAL, STATE & FEDERAL CODES, BY OTHERS.
10. ADEQUATE PLUMBING FACILITIES MUST BE PROVIDED IN ACCORDANCE  
WITH 2019 CBCS (NOT BY CXT)
11. ACCESSIBLE ROUTE TO BE PROVIDE BY OTHER ON SITE (NOT BY CXT).



APPLICABLE CODES

2019 CALIFORNIA BUILDING STANDARDS CODE  
CALIFORNIA CODE OF REGULATIONS, TITLE 24

SPECIAL CONDITIONS AND/OR LIMITATIONS

ACCESSIBILITY TO THIS BUILDING, INCLUDING PARKING, IS TO  
BE PROVIDED BY OTHERS AND CONSTRUCTED IN ACCORDANCE  
WITH THE LOCAL BUILDING CODES.

www.p-e-i.com  
**PROGRESSIVE ENGINEERING, INC.**  
58640 STATE ROAD 15  
GOSHEN, INDIANA 46528  
(574) 533-0337 - Phone  
(574) 533-9736 - Fax

STATE OF CALIFORNIA DESIGN APPROVAL AGENCY  
STATE OF CALIFORNIA APPROVED

This document is certified as being in conformance with  
California Health & Safety - Code Section 18028

PLAN APPROVAL NO.: **PEI 20-4411**  
APPROVED BY: **IPH**  
DATE APPROVED: **08/24/2020**  
DATE OF EXPIRATION: **11/24/2021**

Approval of this document does not authorize or approve any omission or  
deviation from the requirement of the applicable State codes.

INDEX OF DRAWINGS

NO.	TITLE
S-01	COVER SHEET
S-02	HANDLING INSTRUCTIONS
S-03	FLOOR PLAN
S-04	BUILDING ELEVATIONS
S-05	BUILDING ELEVATIONS
S-06	INTERIOR RESTROOM ELEVATIONS
S-07	DETAILS
S-08	WALL PANEL MARK W1
S-09	WALL PANEL MARK W2
S-10	WALL PANEL MARK W3
S-11	WALL PANEL MARK W4
S-12	WALL PANEL MARK W5
S-13	WALL PANEL MARK W6
S-14	WALL PANEL MARK W7
S-15	WALL PANEL MARK W8
S-16	WALL PANEL MARK W9
S-17	WALL PANEL MARK W10 & W11
S-18	WALL PANEL MARK W12
S-19	WALL PANEL MARK W13
S-20	WALL PANEL MARK W14
S-21	WALL PANEL MARK W15
S-22	FLOOR SLAB MARK F1
S-23	FLOOR SLAB MARK F2
S-24	ROOF SLAB MARK R1-R
S-25	ROOF SLAB MARK R1-L
S-26	ROOF SLAB MARK R2-R
S-27	ROOF SLAB MARK R2-L
S-28	INTERIOR PANEL MARK P1 (2 REQUIRED)
S-29	FOUNDATION DETAIL
S-30	FLOOR DRAIN LOCATIONS & BELOW FLOOR PIPING
S-31	PLUMBING PLANS
S-32	PLUMBING PLAN & DIAGRAMS
S-33	PLUMBING DETAILS, DIAGRAMS & SCHEDULES
S-34	ELECTRICAL SCHEDULES
S-35	ELECTRICAL PLAN
S-36	MATERIAL LIST
S-37	MATERIAL LIST



August 23, 2020



**Precast Products**

6707 E. Flamingo Ave. Bldg 300, Nampa, ID 83687  
901 N. Highway 77 Hillsboro, TX 76645  
362 Waverly Road Williamstown, WV 26187

PROJECT TITLE  
**SANTIAGO**  
BUILDING NUMBER S-301

NOTICE  
The information contained herein is proprietary and  
the exclusive property of CXT Incorporated. The  
information may only be used by the original recipient  
for the purpose intended. Reproduction or distribution  
of this information is strictly prohibited without the  
prior written consent of CXT Incorporated. By allowing  
use of this information, CXT Incorporated grants no  
warranty, express or implied, including a warranty of  
merchantability or of fitness for a particular purpose.

CXT Incorporated

REV.	DESCRIPTION	APPROVAL	DATE
SCALE	3/16"=1'-0"	DATE	06-03-20
DRAWN	FM5	FILE NO.	S-301
CHECKED	FM5	PLOT	64

COVER SHEET

DWG NO.	SHEET	REV.
S-01	1 37	

1. THE SANTIAGO STYLE BUILDING CONSISTS OF TWO SEPARATE UNITS TO BE PLACED AND JOINED AT THE PROJECT SITE. PROPER SITE PREPARATION AND HANDLING IS ESSENTIAL FOR THE SAFE AND PROPER INSTALLATION OF THE BUILDING.
2. PROVIDE SHALLOW TRENCH WITH ROLLED EDGES ALONG BUILDING JOINT LINES TO PREVENT TRAPPING MATERIAL BETWEEN UNITS BEING DRAWN TOGETHER.
3. PLACE UNITS AS CLOSE TO ONE ANOTHER AS POSSIBLE. SPACE BETWEEN UNITS SHOULD NOT EXCEED 1" AT INITIATION OF POST-TENSIONING. MAXIMUM ALLOWABLE FINISH JOINT SPACE BETWEEN UNITS SHALL BE 1/2".
4. POST-TENSIONING TO DRAW UNITS INTO CONTACT SHALL BE ACCOMPLISHED WITH EQUIPMENT PROVIDED BY CXT BY PROPERLY TRAINED PERSONNEL. INSTRUCTIONS PROVIDED BY CXT SHALL BE CAREFULLY ADHERED TO. ALL NECESSARY SAFETY PRECAUTIONS SHALL BE TAKEN BY INSTALLATION PERSONNEL. STRESS TENDONS TO DRAW UNITS TOGETHER AND TO RETAIN A MINIMUM EFFECTIVE FORCE IN EACH TENDON OF 2 KIPS AFTER ALL LOSSES.
5. AFTER COMPLETION OF BUILDING PLACEMENT, BLOCKOUTS AT POST-TENSIONING ANCHORAGE POINTS SHALL BE FILLED WITH NON-METALLIC, NON-SHRINK GROUT. PROVIDE SMOOTH, NEAT FINISH COMPATIBLE WITH SURROUNDING CONCRETE SURFACES. MATCH CONCRETE COLOR.
6. PROVIDE UTILITY CONNECTIONS (PLUMBING & ELECTRICAL) AS REQUIRED AND/OR AS CALLED FOR ON THE DRAWINGS.
7. FILL FLOOR BLOCKOUTS AFTER COMPLETION OF UTILITY HOOKUPS WITH CONCRETE. SLOPE TO DRAIN.



SECTION	WEIGHT	LENGTH	WIDTH	HEIGHT
A (BACK)	74,700	26'-0"	11'-6"	12'-0"
B (FRONT)	77,900	26'-0"	11'-6"	12'-0"

NOTES:

1. C.G. IS APPROXIMATE.

www.p-e-i.com

**PROGRESSIVE ENGINEERING, INC.**

58640 STATE ROAD 15  
GOSHEN, INDIANA 46528  
(574) 533-0337 - Phone  
(574) 533-9736 - Fax

**STATE OF INDIANA DESIGN APPROVAL AGENCY**  
**STATE OF CALIFORNIA APPROVED**

This document is certified as being in conformance with  
California Health & Safety - Code Section 18028

PLAN APPROVAL NO.: PEI 20-4411

APPROVED BY: IPH

DATE APPROVED: 08/24/2020

DATE OF EXPIRATION: 11/24/2021

Approval of this document does not authorize or approve any omission or deviation from the requirement of the applicable State codes.

CU. FT. CONC.	SQ. FT. W.W.F.
APPROXIMATE WEIGHT	



PROJECT TITLE  
SANTIAGO  
BUILDING NUMBER S-301

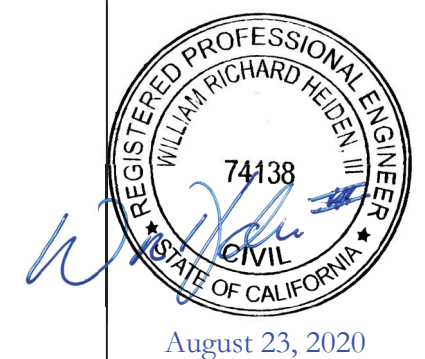
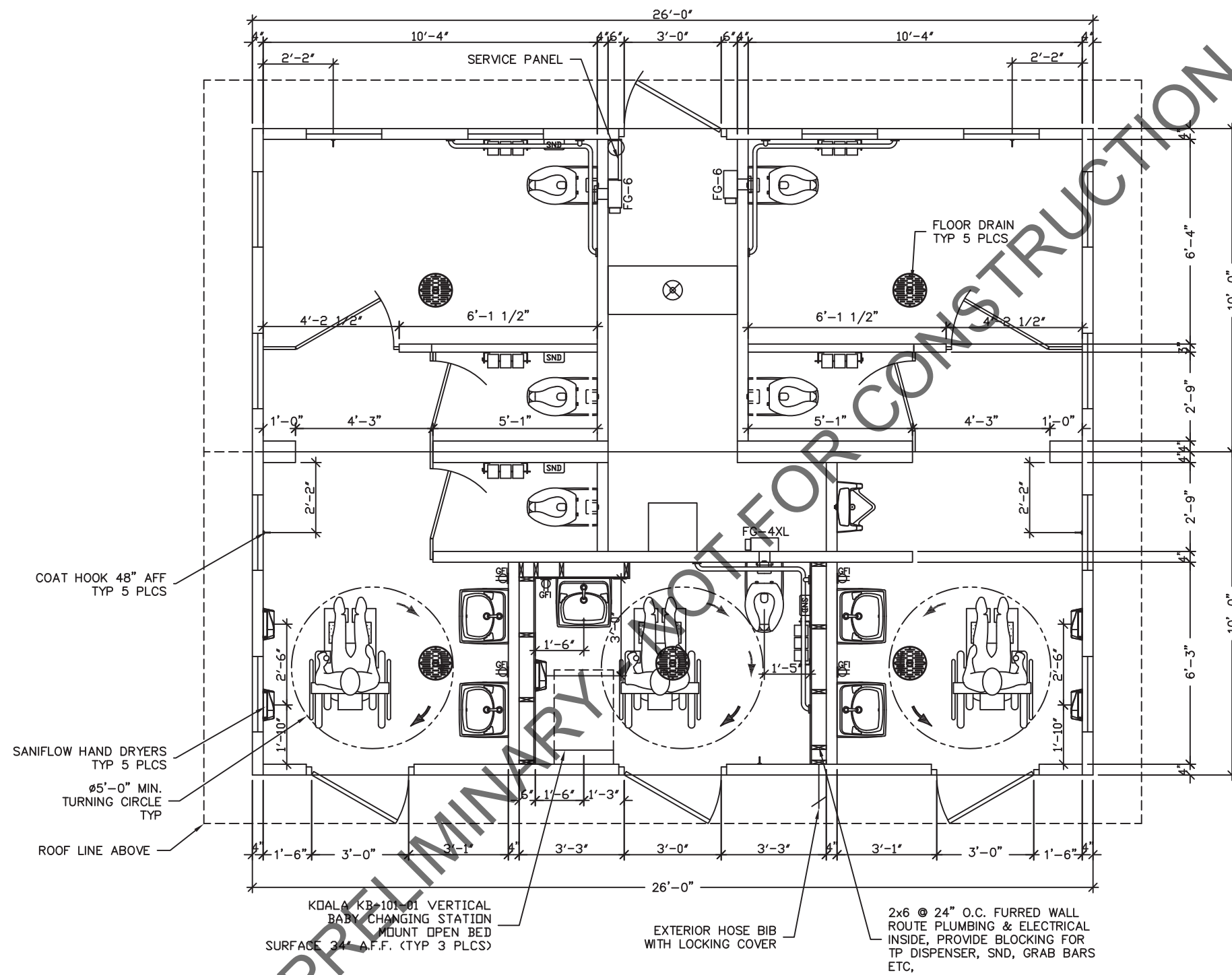
**NOTICE**

The information contained herein is proprietary and the exclusive property of CXT Incorporated. The information may only be used by the original recipient for the purpose intended. Reproduction or distribution of this information is strictly prohibited without the prior written consent of CXT Incorporated. By allowing use of this information, CXT Incorporated grants no warranty, express or implied, including a warranty of merchantability or of fitness for a particular purpose.

CXT Incorporated			
REV.	DESCRIPTION	APPROVAL	DATE
SCALE	1/8"=1'-0"	DATE	07-15-20
DRAWN	FM5	FILE NO.	S-301
CHECKED	FM5	PLOT	96

## HANDLING INSTRUCTIONS

DWG NO.	SHEET	REV.
S-02	2	
	37	



**CXT**  
**Precast Products**  
6707 E. Flamingo Ave. Bldg 300, Nampa, ID 83687  
901 N. Highway 77 Hillsboro, TX 76645  
362 Waverly Road Williamstown, WV 26187

PROJECT TITLE  
**SANTIAGO**  
BUILDING NUMBER S-301

NOTICE  
The information contained herein is proprietary and the exclusive property of CXT Incorporated. The information may only be used by the original recipient for the purpose intended. Reproduction or distribution of this information is strictly prohibited without the prior written consent of CXT Incorporated. By allowing use of this information, CXT Incorporated grants no warranty, express or implied, including a warranty of merchantability or of fitness for a particular purpose.

CXT Incorporated			

REV.	DESCRIPTION	APPROVAL	DATE
SCALE	1/4"=1'-0"	DATE	06-03-20
DRAWN	FM5	FILE NO.	S-301
CHECKED	FM5	PLOT	48

**FLOOR PLAN**

DWG NO.	SHEET	REV.
S-03	3	37

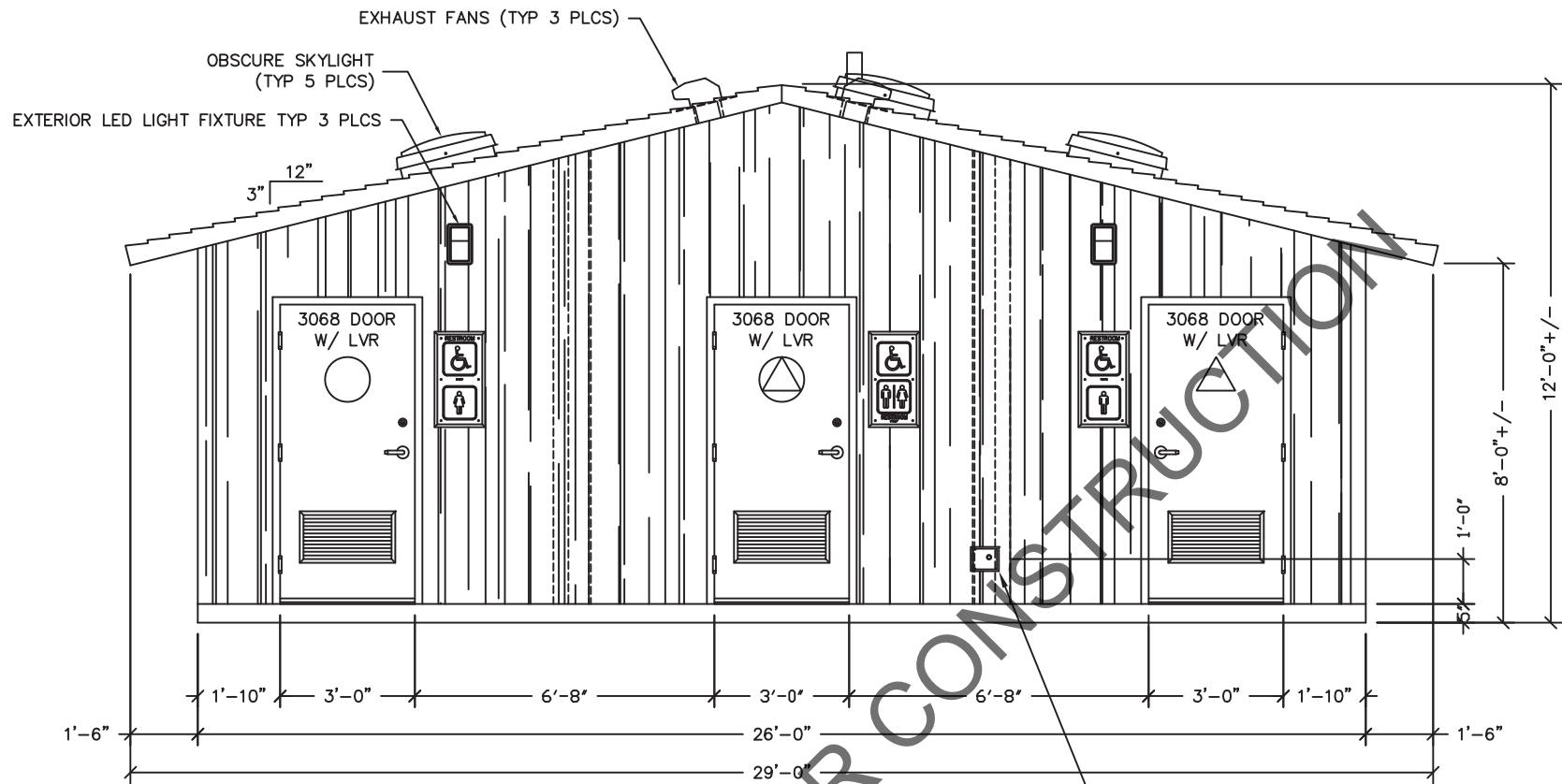
www.p-e-i.com  
**PROGRESSIVE ENGINEERING, INC.**  
58640 STATE ROAD 15  
GOSHEN, INDIANA 46528  
(574) 533-0337 - Phone  
(574) 533-9736 - Fax

STATE OF CALIFORNIA DESIGN APPROVAL AGENCY  
STATE OF CALIFORNIA APPROVED

This document is certified as being in conformance with  
California Health & Safety - Code Section 18028

PLAN APPROVAL NO.: **PEI 20-4411**  
APPROVED BY: **IPH**  
DATE APPROVED: **08/24/2020**  
DATE OF EXPIRATION: **11/24/2021**

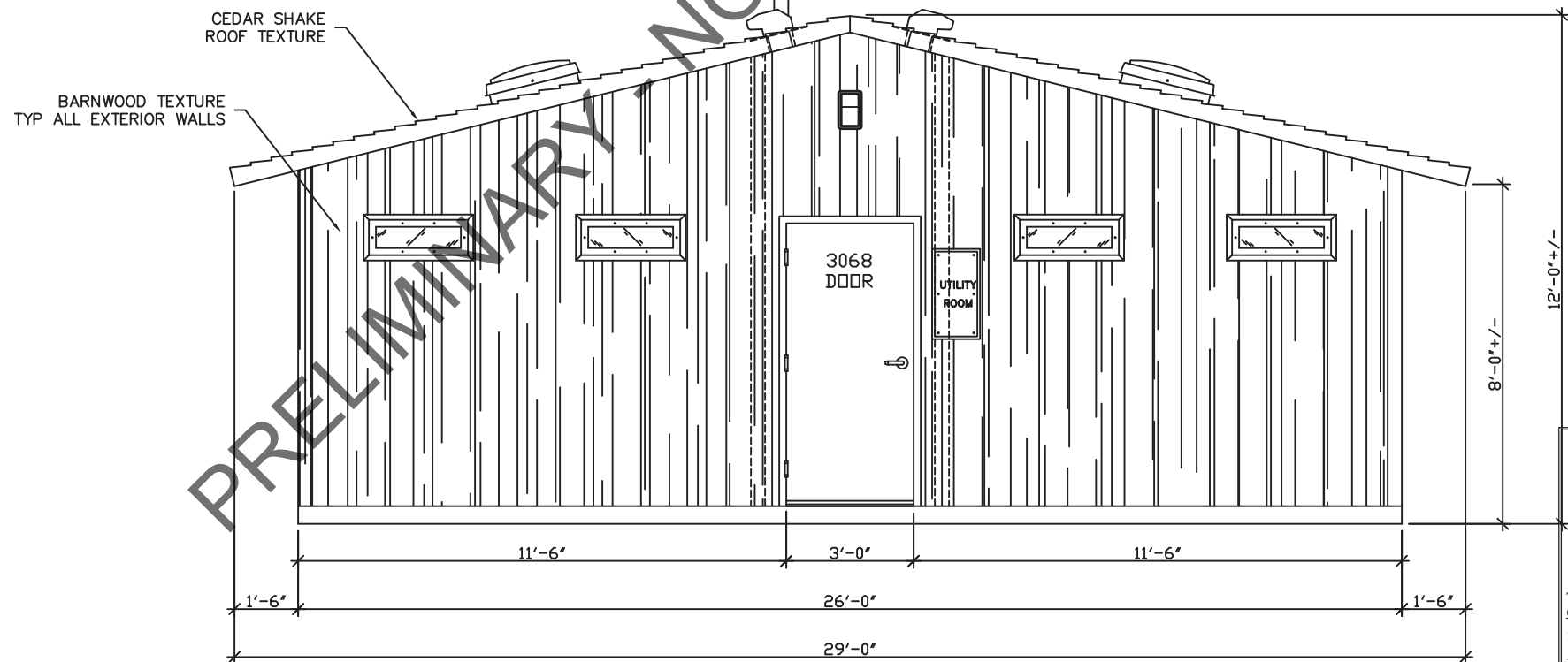
Approval of this document does not authorize or approve any omission or deviation from the requirement of the applicable State codes.



PLUMBING VENT PIPE

FRONT ELEVATION

WOODFORD B65  
EXTERIOR LOCKING  
HOSE BIB



REAR ELEVATION

www.p-e-i.com  
**PROGRESSIVE ENGINEERING, INC.**  
 58640 STATE ROAD 15  
 GOSHEN, INDIANA 46528  
 (574) 533-0337 - Phone  
 (574) 533-9736 - Fax

STATE OF CALIFORNIA DESIGN APPROVAL AGENCY  
 STATE OF CALIFORNIA APPROVED

This document is certified as being in conformance with  
 California Health & Safety - Code Section 18028

PLAN APPROVAL NO.: **PEI 20-4411**

APPROVED BY: **IPH**

DATE APPROVED: **08/24/2020**

DATE OF EXPIRATION: **11/24/2021**

Approval of this document does not authorize or approve any omission or  
 deviation from the requirement of the applicable State codes.



August 23, 2020



**Precast Products**

6707 E. Flamingo Ave. Bldg 300, Nampa, ID 83687  
 901 N. Highway 77 Hillsboro, TX 76645  
 362 Waverly Road Williamstown, WV 26187

PROJECT TITLE

**SANTIAGO**

**BUILDING NUMBER S-301**

NOTICE

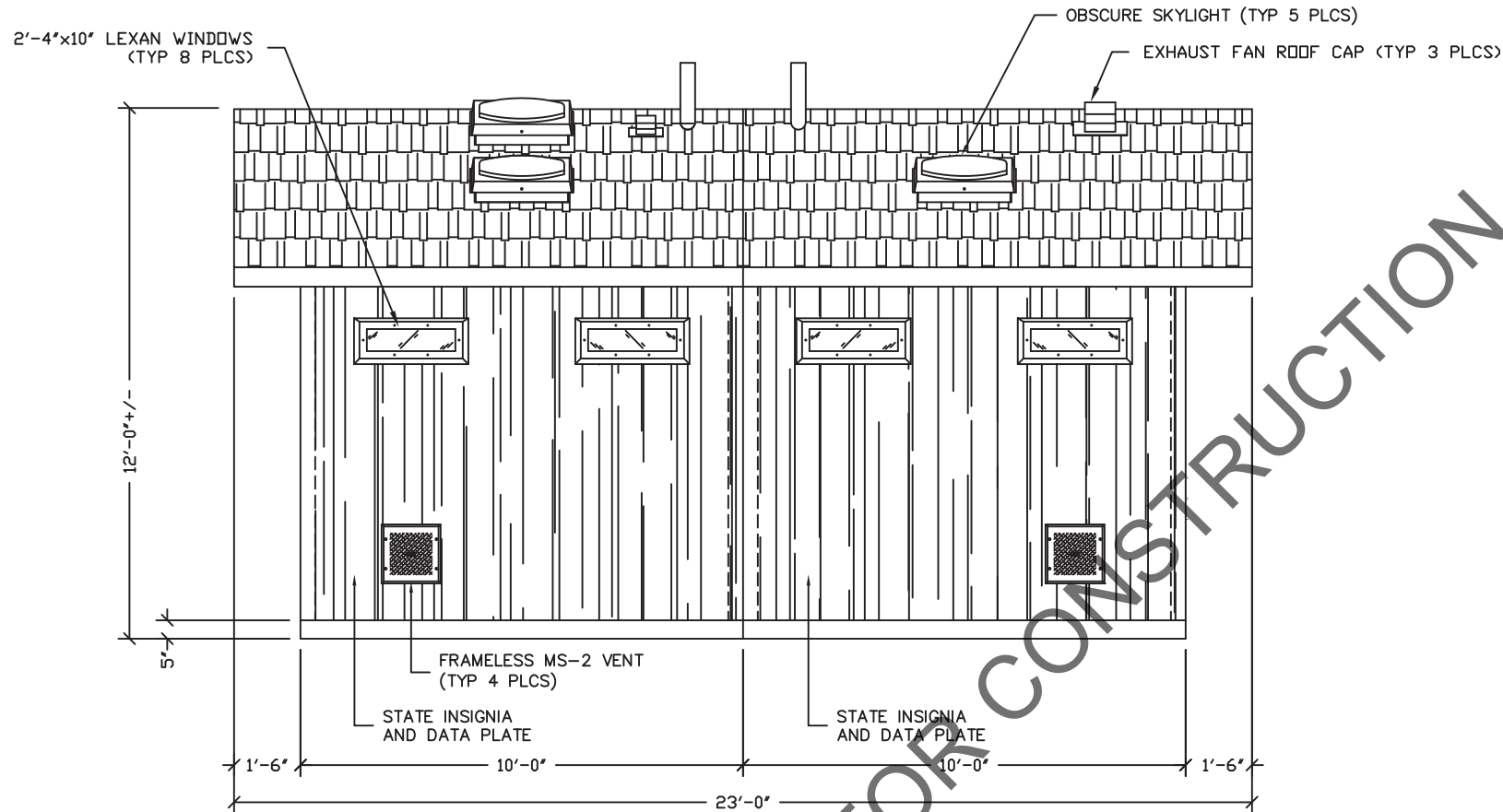
The information contained herein is proprietary and the exclusive property of CXT Incorporated. The information may only be used by the original recipient for the purpose intended. Reproduction or distribution of this information is strictly prohibited without the prior written consent of CXT Incorporated. By allowing use of this information, CXT Incorporated grants no warranty, express or implied, including a warranty of merchantability or of fitness for a particular purpose.

CXT Incorporated

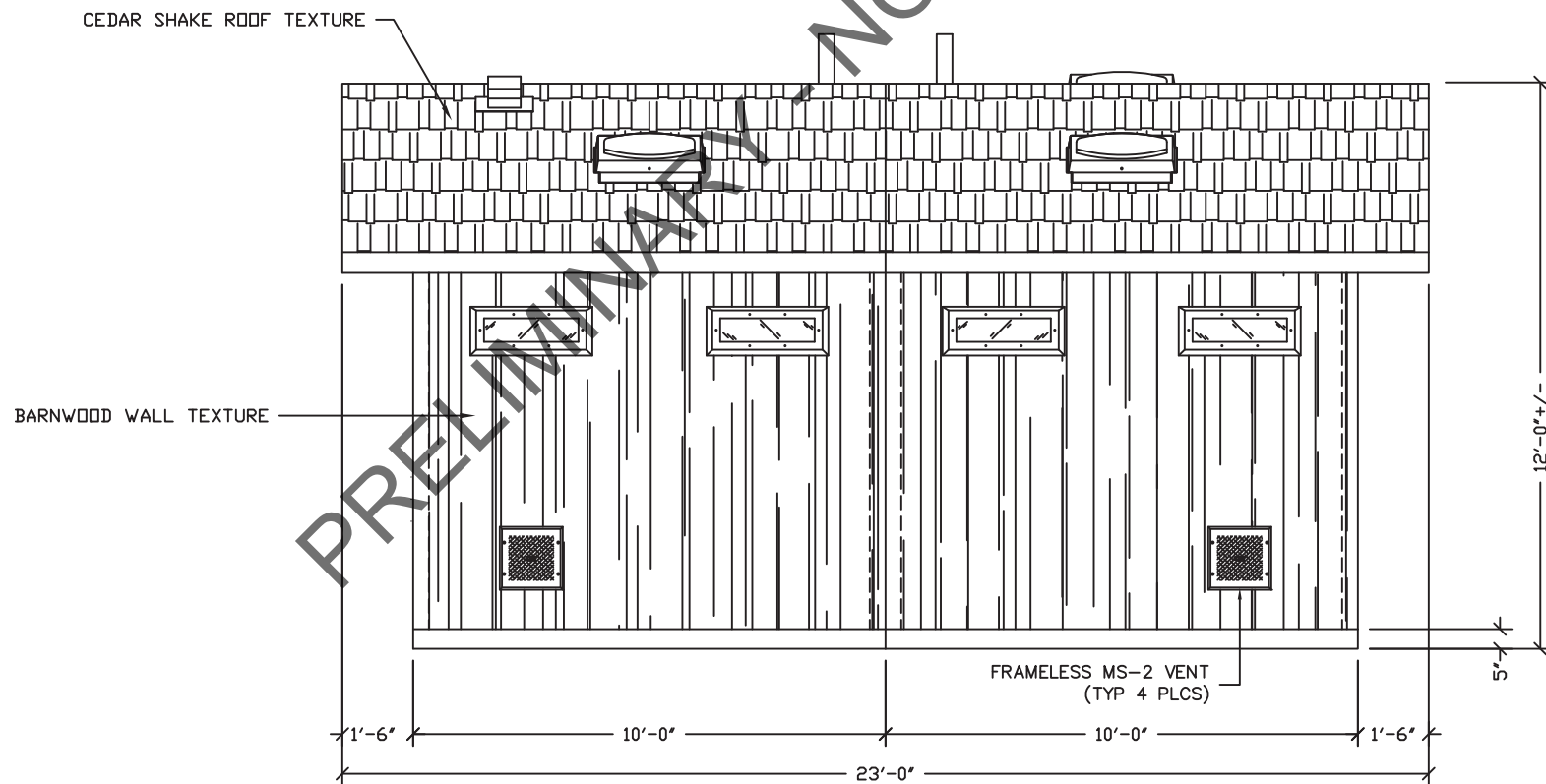
REV.	DESCRIPTION	APPROVAL	DATE
SCALE	1/4"=1'-0"	DATE	06-03-20
DRAWN	FM5	FILE NO.	S-301
CHECKED	FM5	PLOT	48

**BUILDING ELEVATIONS**

DWG NO.	SHEET	REV.
<b>S-04</b>	<b>4</b>	<b>37</b>



RH SIDE ELEVATION



LH SIDE ELEVATION

www.p-e-i.com  
**PROGRESSIVE ENGINEERING, INC.**  
 58640 STATE ROAD 15  
 GOSHEN, INDIANA 46528  
 (574) 533-0337 - Phone  
 (574) 533-9736 - Fax

STATE OF CALIFORNIA DESIGN APPROVAL AGENCY  
 STATE OF CALIFORNIA APPROVED

This document is certified as being in conformance with  
 California Health & Safety - Code Section 18028

PLAN APPROVAL NO.: PEI 20-4411  
 APPROVED BY: IPH  
 DATE APPROVED: 08/24/2020  
 DATE OF EXPIRATION: 11/24/2021

Approval of this document does not authorize or approve any omission or  
 deviation from the requirement of the applicable State codes.



August 23, 2020



**Precast Products**

6707 E. Flamingo Ave. Bldg 300, Nampa, ID 83687  
 901 N. Highway 77 Hillsboro, TX 76645  
 362 Waverly Road Williamstown, WV 26187

PROJECT TITLE  
**SANTIAGO**  
 BUILDING NUMBER S-301

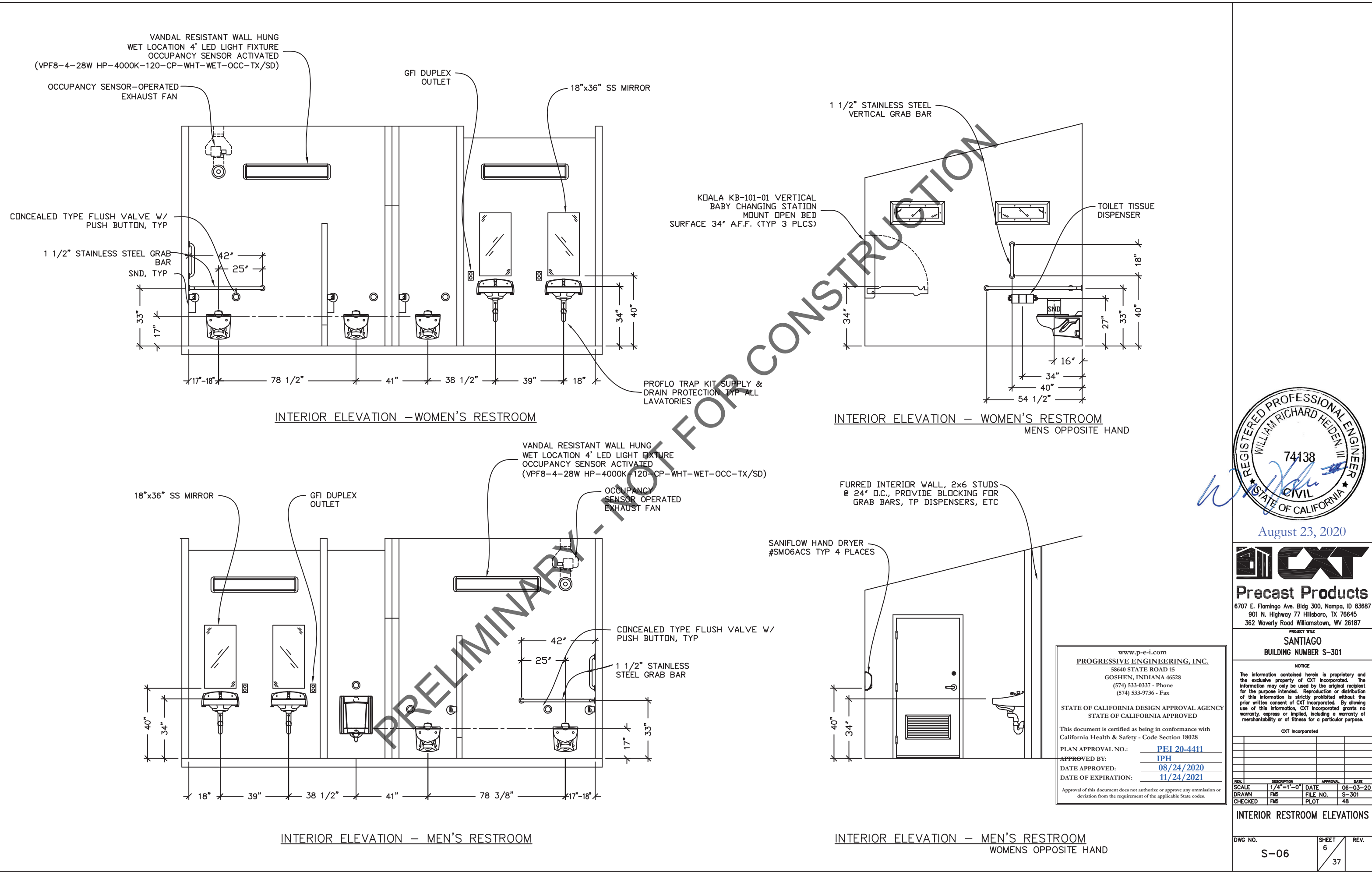
NOTICE  
 The information contained herein is proprietary and the exclusive property of CXT Incorporated. The information may only be used by the original recipient for the purpose intended. Reproduction or distribution of this information is strictly prohibited without the prior written consent of CXT Incorporated. By allowing use of this information, CXT Incorporated grants no warranty, express or implied, including a warranty of merchantability or of fitness for a particular purpose.

CXT Incorporated			
REV.	DESCRIPTION	APPROVAL	DATE
SCALE	1/4"=1'-0"	DATE	06-03-20
DRAWN	FM5	FILE NO.	S-301
CHECKED	FM5	PLOT	48

**BUILDING ELEVATIONS**

DWG NO.	SHEET	REV.
S-05	5	37





August 23, 2020

**CXT**  
**Precast Products**  
6707 E. Flamingo Ave. Bldg 300, Nampa, ID 83687  
901 N. Highway 77 Hillsboro, TX 76645  
362 Waverly Road Williamstown, WV 26187

PROJECT TITLE  
**SANTIAGO**  
BUILDING NUMBER S-301

NOTICE  
The information contained herein is proprietary and the exclusive property of CXT Incorporated. The information may only be used by the original recipient for the purpose intended. Reproduction or distribution of this information is strictly prohibited without the prior written consent of CXT Incorporated. By allowing use of this information, CXT Incorporated grants no warranty, express or implied, including a warranty of merchantability or of fitness for a particular purpose.

CXT Incorporated			
REV.	DESCRIPTION	APPROVAL	DATE
SCALE	1/4"=1'-0"	DATE	06-03-20
DRAWN	FM5	FILE NO.	S-301
CHECKED	FM5	PLOT	48

www.p-e-i.com  
**PROGRESSIVE ENGINEERING, INC.**  
58640 STATE ROAD 15  
GOSHEN, INDIANA 46528  
(574) 533-0337 - Phone  
(574) 533-9736 - Fax

STATE OF CALIFORNIA DESIGN APPROVAL AGENCY  
STATE OF CALIFORNIA APPROVED

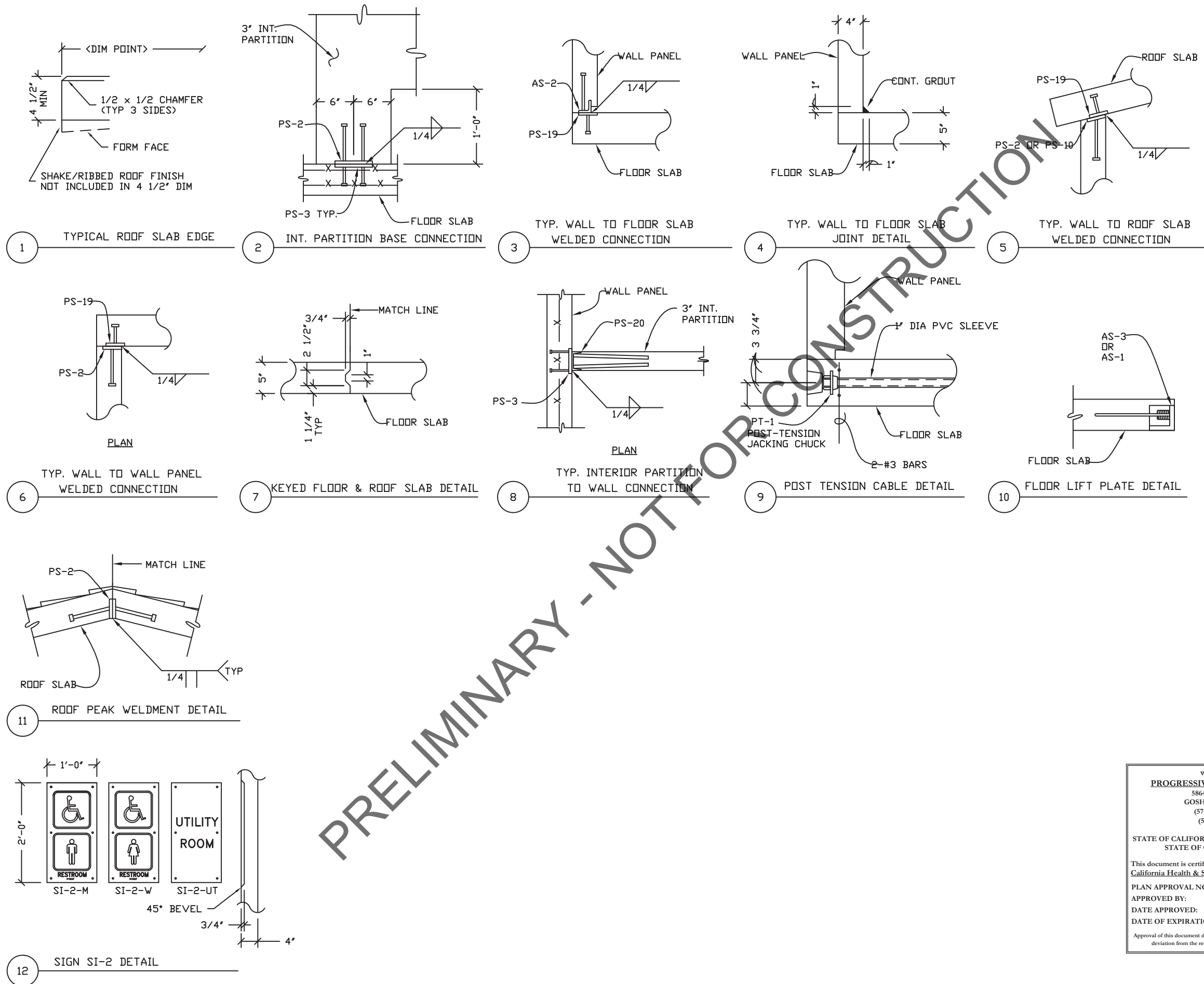
This document is certified as being in conformance with  
California Health & Safety - Code Section 18028

PLAN APPROVAL NO.: **PEI 20-4411**  
APPROVED BY: **IPH**  
DATE APPROVED: **08/24/2020**  
DATE OF EXPIRATION: **11/24/2021**

Approval of this document does not authorize or approve any omission or deviation from the requirement of the applicable State codes.

**INTERIOR RESTROOM ELEVATIONS**

DWG NO.	SHEET	REV.
<b>S-06</b>	6	37
	37	



August 23, 2020

**CXT**  
**Precast Products**  
 6707 E. Flamingo Ave. Bldg 300, Nampa, ID 83687  
 901 N. Highway 77 Hillsboro, TX 76645  
 362 Waverly Road Williamstown, WV 26187

PROJECT TITLE  
**SANTIAGO**  
 BUILDING NUMBER S-301

NOTICE  
 The information contained herein is proprietary and the exclusive property of CXT Incorporated. The information may only be used by the original recipient for the purpose intended. Reproduction or distribution of this information is strictly prohibited without the prior written consent of CXT Incorporated. By allowing use of this information, CXT Incorporated grants no warranty, express or implied, including a warranty of merchantability or of fitness for a particular purpose.

CXT Incorporated			
REV.	DESCRIPTION	APPROVAL	DATE
SCALE	3/4"=1'-0"	DATE	07-15-20
DRAWN	FM5	FILE NO.	S-301
CHECKED	FM5	PLOT	16

**DETAILS**

DWG NO.	S-07	SHEET	7	REV.	37
---------	------	-------	---	------	----

www.p-e-i.com  
**PROGRESSIVE ENGINEERING, INC.**  
 58640 STATE ROAD 15  
 GOSHEN, INDIANA 46528  
 (574) 533-0337 - Phone  
 (574) 533-9736 - Fax

STATE OF CALIFORNIA DESIGN APPROVAL AGENCY  
 STATE OF CALIFORNIA APPROVED

This document is certified as being in conformance with  
 California Health & Safety - Code Section 18028

PLAN APPROVAL NO.: **PEI 20-4411**  
 APPROVED BY: **IPH**  
 DATE APPROVED: **08/24/2020**  
 DATE OF EXPIRATION: **11/24/2021**

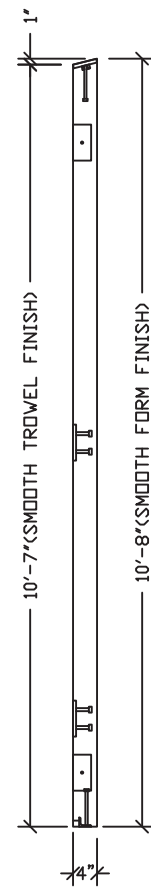
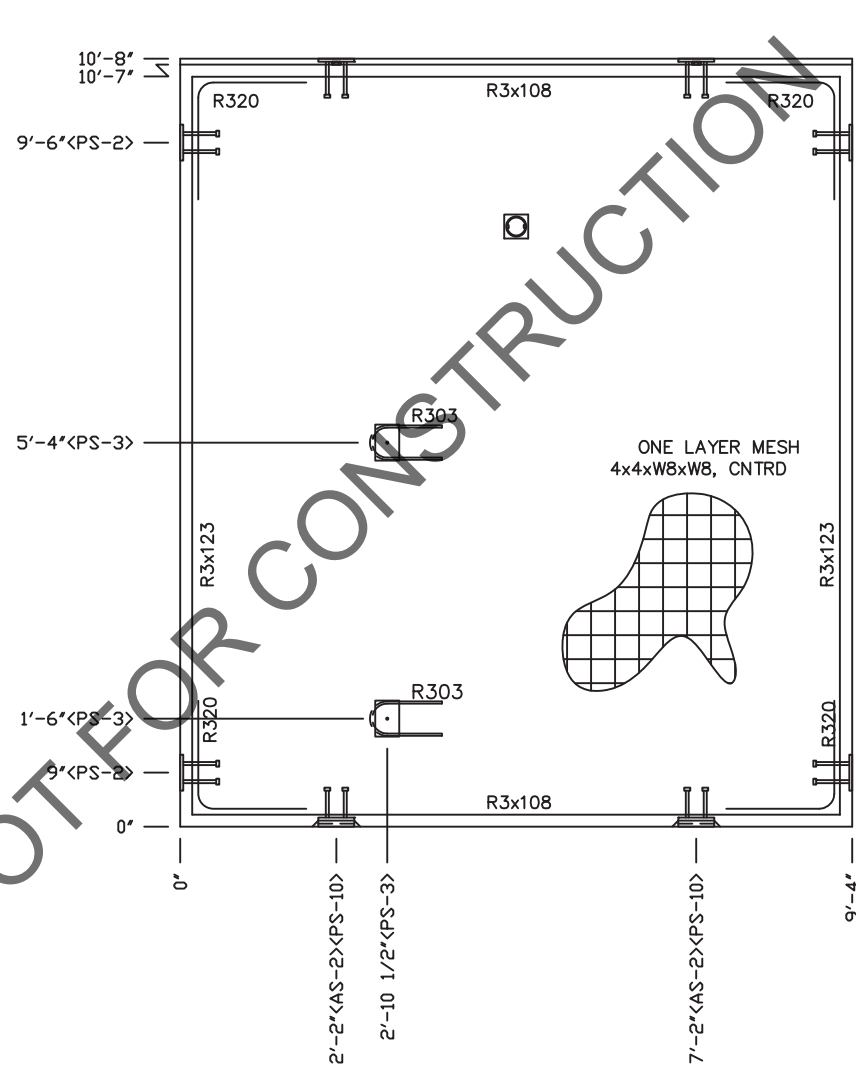
Approval of this document does not authorize or approve any omission or deviation from the requirement of the applicable State codes.











CU. FT. CONC.	SQ. FT. W.W.F.
32.6 (1.21)	96
APPROXIMATE WEIGHT	
4,890	



August 23, 2020



## Precast Products

6707 E. Flamingo Ave. Bldg 300, Nampa, ID 83687  
901 N. Highway 77 Hillsboro, TX 76645  
362 Waverly Road Williamstown, WV 26187

PROJECT TITLE

## SANTIAGO

**BUILDING NUMBER S-301**

## NOTICE

The information contained herein is proprietary and the exclusive property of CXT Incorporated. The information may only be used by the original recipient for the purpose intended. Reproduction or distribution of this information is strictly prohibited without the prior written consent of CXT Incorporated. By allowing use of this information, CXT Incorporated grants no warranty, express or implied, including a warranty of merchantability or of fitness for a particular purpose.

**CXT Incorporated**

REV.	DESCRIPTION	APPROVAL	DATE
SCALE	3/8"=1'-0"	DATE	07-15-20
DRAWN	FMS	FILE NO.	S-301
CHECKED	FMS	PLOT	16

WALL PANEL  
MARK W4

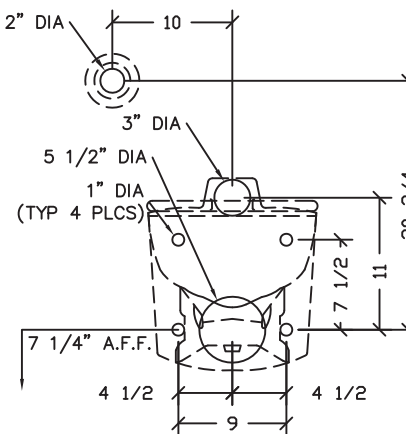
DWG NO.	SHEET	REV.
S-11	11	
	37	

BLOCKOUT DETAIL	FLUSH VALVE BOWL DETAIL AMERICAN STANDARD 2634.101
--------------------	---

FLUSH VALVE BOWL DETAIL

---

AMERICAN STANDARD 2634.101



## BLOCKOUTS

www.p-e-i.com  
**PROGRESSIVE ENGINEERING, INC.**  
58640 STATE ROAD 15  
GOSHEN, INDIANA 46528  
(574) 533-0337 - Phone  
(574) 533-9736 - Fax

STATE OF CALIFORNIA DESIGN APPROVAL AGENCY  
STATE OF CALIFORNIA APPROVED

This document is certified as being in conformance with  
California Health & Safety - Code Section 18028

PLAN APPROVAL NO.: PEI 20-4411

APPROVED BY: IPH

DATE APPROVED: 08/24/2020

DATE OF EXPIRATION: 11/24/2021

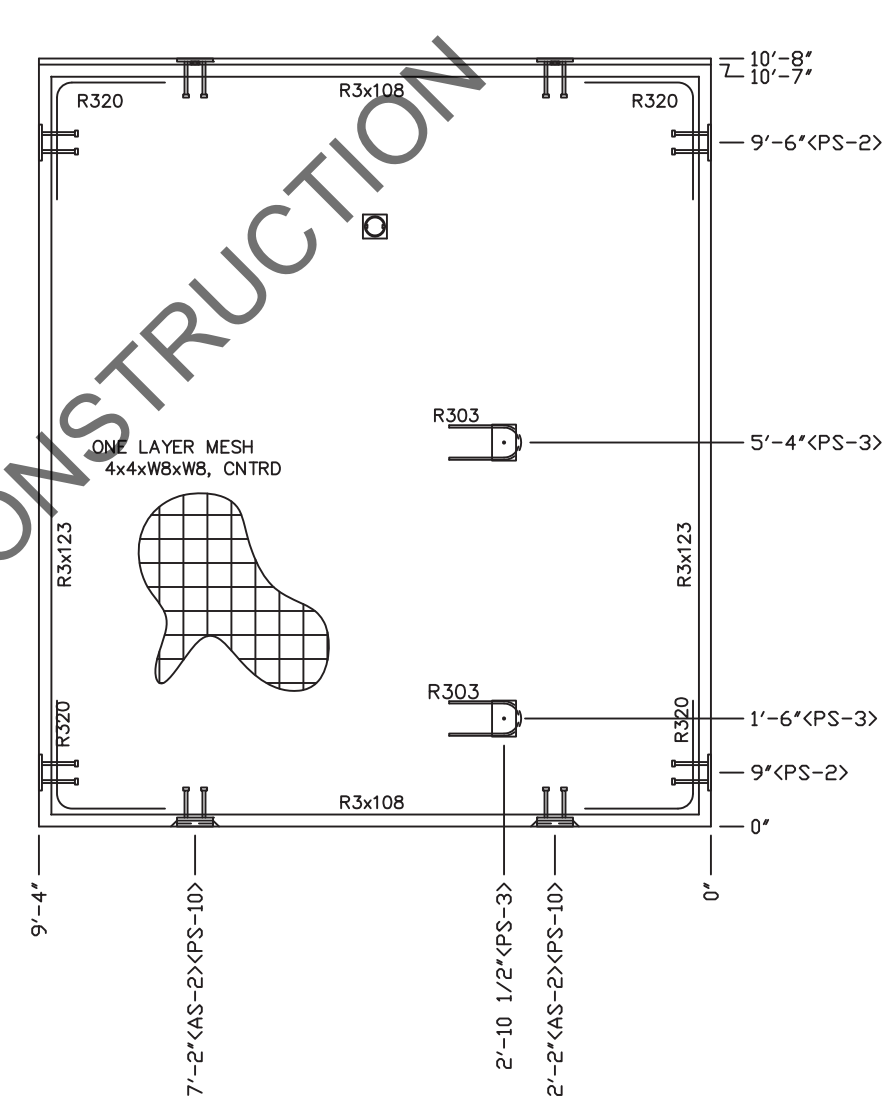
Approval of this document does not authorize or approve any omission.

Approval of this document does not authorize or approve any omission or deviation from the requirement of the applicable State codes.

---

NOTES:

1. WALL THICKNESS = 4"
2. EXCEPT R303, REINFORCING BARS TO BE PLACED IN PAIRS ONE EACH FACE OF PANEL W/ 3/4" MIN. COVER



DWG NO.		SHEET	REV.
S-12		12 37	

FLUSH VALVE BOWL DETAIL

AMERICAN STANDARD 2634.101

Technical drawing showing the Flush Valve Bowl Detail. The drawing includes a top view and a side view. Key dimensions and features are labeled:

- Top View Dimensions:
  - Overall width: 9
  - Distance from center to side edge: 4 1/2
  - Distance from center to front edge: 4 1/2
  - Distance from center to top edge: 7 1/4 A.F.F.
  - Distance from center to side edge (inner): 7 1/2
  - Distance from center to front edge (inner): 7 1/2
  - Distance from center to top edge (inner): 11
  - Distance from center to top edge (outer): 20 3/4
- Side View Dimensions:
  - Overall height: 20 3/4
  - Distance from center to side edge: 7 1/2
  - Distance from center to front edge: 7 1/2
  - Distance from center to top edge: 11
  - Distance from center to top edge (outer): 20 3/4
- Other Labels:
  - 10 (Distance from center to top edge)
  - 2" DIA (Top edge)
  - 3" DIA (Side edge)
  - 5 1/2" DIA (Front edge)
  - 1" DIA (TYP 4 PLCS) (Bottom edge)

BLOCKOUTS

8'-4" (E-BOX)  
<B.O. 6 1/2" DIA>

2'-4" (B.O. 2" DIA)

7 1/4" (FLUSH BOWL B.O.)

0"

1'-4 1/2" (FLUSH BOWL B.O.)

6 1/2" (B.O. 2" DIA)

0"

10'-8" (SMOOTH FORM FINISH)

10'-7" (SMOOTH TROWEL FINISH)

4"

9'-4"

7'-2" (AS-2) (PS-10)

R320

R3x108

R3x123

R303

R303

ONE LAYER MESH  
4x4xW8xW8, CNTRD

R3x108

2'-10 1/2" (PS-3)

PRELIMINARY - NOT FOR CONSTRUCTION

www.p-e-i.com  
**PROGRESSIVE ENGINEERING, INC.**  
58640 STATE ROAD 15  
GOSHEN, INDIANA 46528  
(574) 533-0337 - Phone  
(574) 533-9736 - Fax

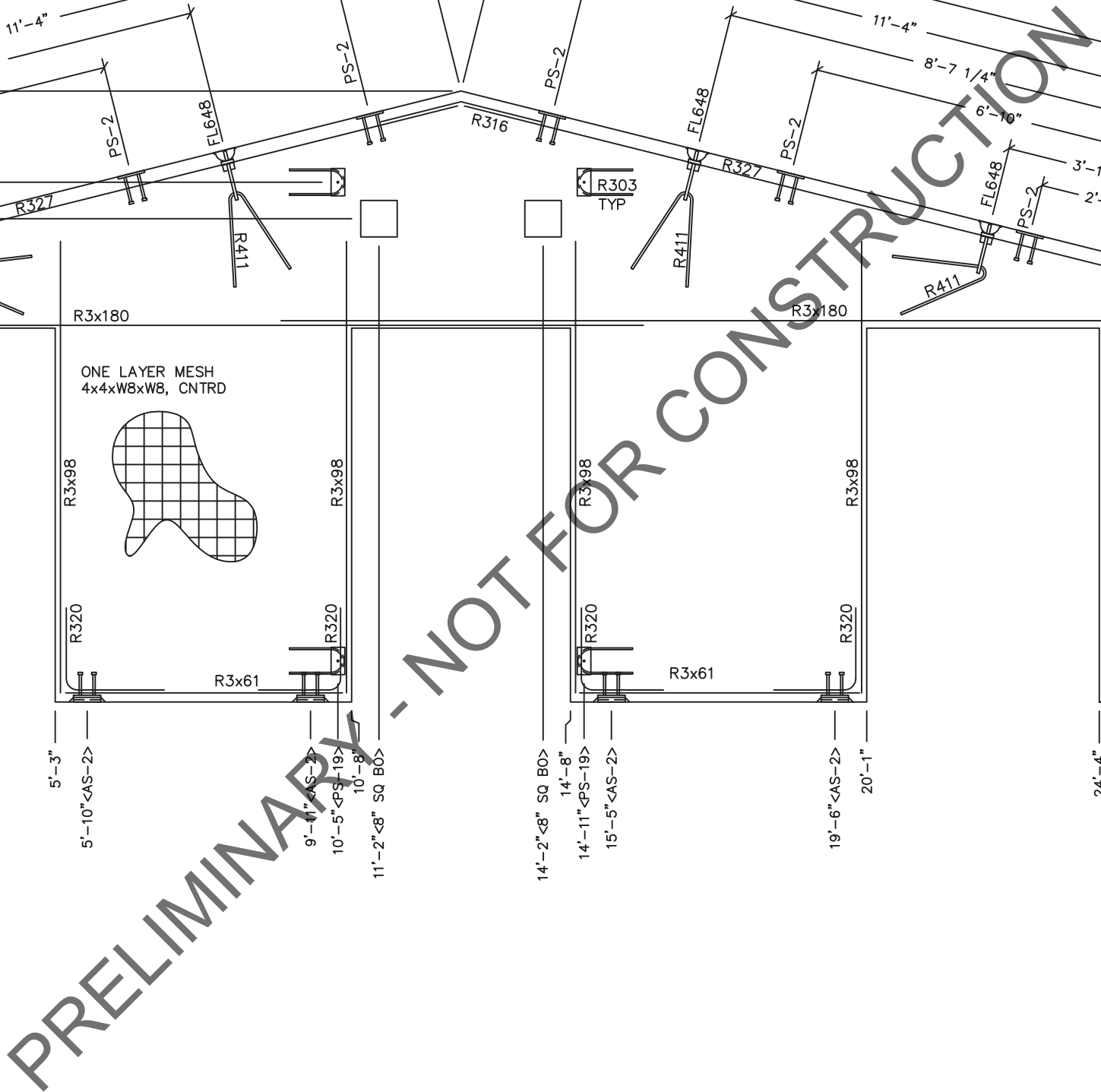
**STATE OF CALIFORNIA DESIGN APPROVAL AGENCY  
STATE OF CALIFORNIA APPROVED**

This document is certified as being in conformance with  
**California Health & Safety - Code Section 18028**



PLAN APPROVAL NO.:	<b><u>PEI 20-4411</u></b>
APPROVED BY:	<b><u>IPH</u></b>
DATE APPROVED:	<b><u>08/24/2020</u></b>
DATE OF EXPIRATION:	<b><u>11/24/2021</u></b>

Approval of this document does not authorize or approve any omission or deviation from the requirement of the applicable State codes.

- NOTES:
1. WALL THICKNESS = 4"
  2. EXCEPT R303, REINFORCING BARS TO BE PLACED IN PAIRS ONE EACH FACE OF PANEL W/ 3/4" MIN. COVER

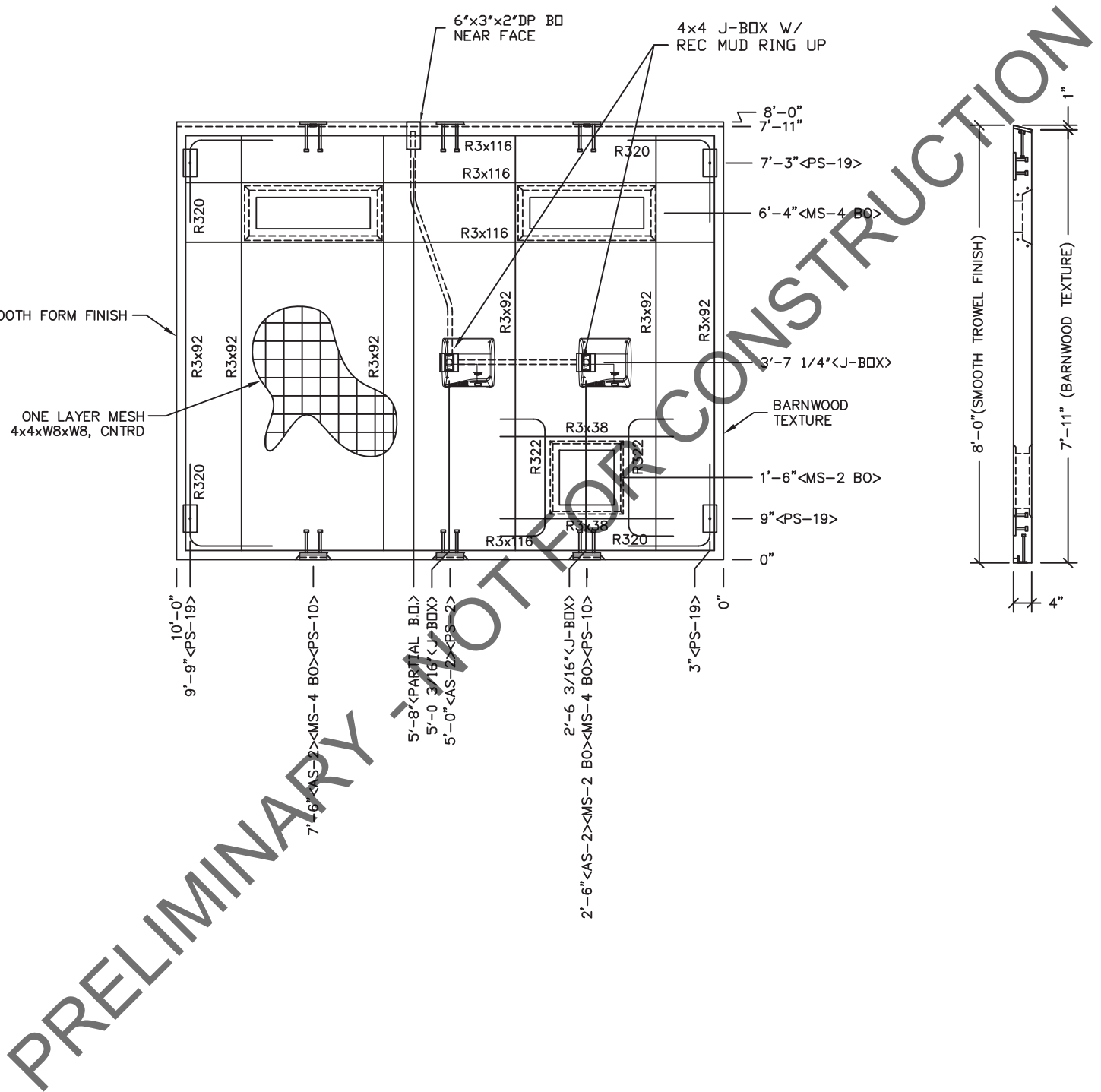


1. WALL THICKNESS = 4"
2. EXCEPT R303, R411, R327 & R316, REINFORCING BARS TO BE PLACED IN PAIRS ONE EACH FACE OF PANEL W/ 3/4" MIN. COVER

EMBEDDED MATERIALS					
		ITEM			QTY
		AS-2			6
		PS-2			10
		PS-19			4
		FL-648			4
		R411			4
		R303			4
		R327			2
		R3x92			8
		R3x180			4
		R3x61			4
		R316			1
		R320			8
		R3x98			8
		8" SQ. BLOCKOUT			2
		CJ. FT. CONC.	SQ. FT. W.W.F.		
		52.1 (1.93)	240		
		APPROXIMATE WEIGHT			
		7,815			
					
August 23, 2020					
 <b>Precast Products</b>					
6707 E. Flamingo Ave. Bldg 300, Nampa, ID 83687 901 N. Highway 77 Hillsboro, TX 76645 362 Waverly Road Williamsonstown, WV 26187					
PROJECT TITLE					
SANTIAGO					
BUILDING NUMBER S-301					
NOTICE					
The information contained herein is proprietary and the exclusive property of CXT Incorporated. The information may only be used by the original recipient for the purpose intended. Reproduction or distribution of this information is strictly prohibited without the prior written consent of CXT Incorporated. By allowing use of this information, CXT Incorporated grants no warranty, express or implied, including a warranty of merchantability or of fitness for a particular purpose.					
CXT Incorporated					
REV.	DESCRIPTION	DATE	APPROVAL	DATE	
SCALE	3/8"=1'-0"	FILE NO.	DRAWN	FMS	07-15-20
CHECKED	FMS	PLOT	S-301		
WALL PANEL MARK W6					
DWG. NO.		SHEET		REV.	
S-13		13			
		37			



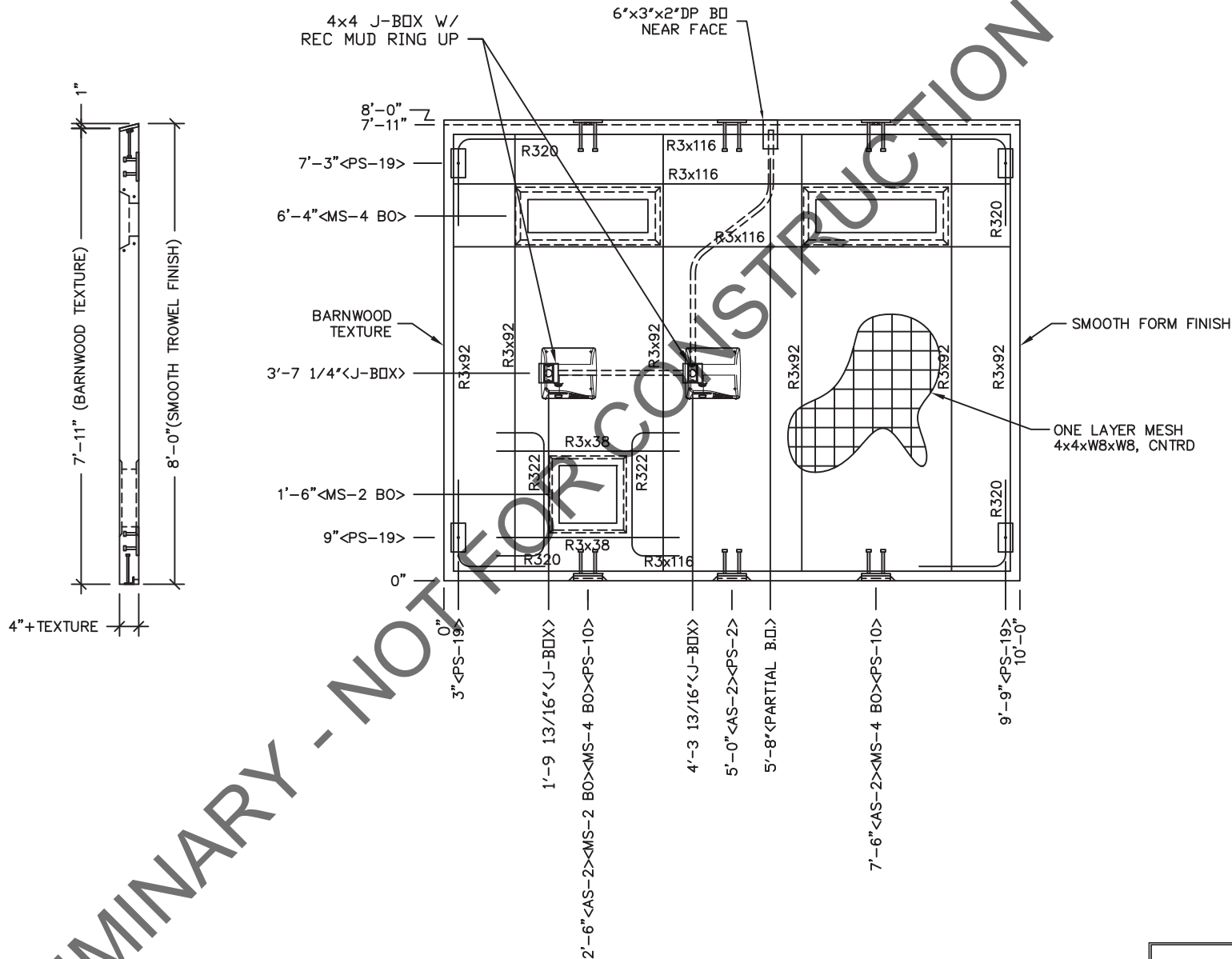




1. WALL THICKNESS = 4"
2. EXCEPT R322 & R3x38 REINFORCING BARS TO BE PLACED IN PAIRS  
ONE EACH FACE OF PANEL W/ 3/4" MIN. COVER
3. ALL OTHER REBAR TO BE CENTERED IN PANEL.

EMBEDDED MATERIALS	
ITEM	QTY
AS-2	3
PS-10	2
PS-19	4
R3x38	2
R3x116	8
R3x92	12
R320	8
PS-2	1
MS-4 BO	2
MS-2 BO	1
R322	2
4x4 J-BOX	2
RECT MUD RING	2
6"x3"x2"DP PARTIAL B.O.	1
CU. FT. CONC.	SQ. FT. W.W.F.
25.4 (0.94)	80
APPROXIMATE WEIGHT	
3,810	
<div></div>	
August 23, 2020	
<div></div>	
6707 E. Flamingo Ave. Bldg 300, Nampa, ID 83687 901 N. Highway 77 Hillsboro, TX 76645 362 Waverly Road Williamstown, WV 26187	
PROJECT TITLE	
SANTIAGO	
BUILDING NUMBER S-301	
NOTICE	
The information contained herein is proprietary and the exclusive property of CXT Incorporated. The information may only be used by the original recipient for the purpose intended. Reproduction or distribution of this information is strictly prohibited without the prior written consent of CXT Incorporated. By allowing use of this information, CXT Incorporated grants no warranty, express or implied, including a warranty of merchantability or of fitness for a particular purpose.	
CXT Incorporated	

PRELIMINARY - NOT FOR CONSTRUCTION



NOTES:

1. WALL THICKNESS = 4"
2. EXCEPT R322 & R3x38 REINFORCING BARS TO BE PLACED IN PAIRS ONE EACH FACE OF PANEL W/ 3/4" MIN. COVER
3. ALL OTHER REBAR TO BE CENTERED IN PANEL.

www.p-e-i.com  
**PROGRESSIVE ENGINEERING, INC.**  
58640 STATE ROAD 15  
GOSHEN, INDIANA 46528  
(574) 533-0337 - Phone  
(574) 533-9736 - Fax

STATE OF CALIFORNIA DESIGN APPROVAL AGENCY  
STATE OF CALIFORNIA APPROVED

This document is certified as being in conformance with  
**California Health & Safety - Code Section 18028**

PLAN APPROVAL NO.: **PEI 20-4411**  
APPROVED BY: **IPH**  
DATE APPROVED: **08/24/2020**  
DATE OF EXPIRATION: **11/24/2021**

Approval of this document does not authorize or approve any omission or deviation from the requirement of the applicable State codes.

EMBEDDED MATERIALS	
ITEM	QTY
AS-2	3
PS-10	2
PS-19	4
R3x38	2
R3x116	8
R3x92	12
R320	8
PS-2	1
MS-4 BO	2
MS-2 BO	1
R322	2
4x4 J-BOX	2
RECT MUD RING	2
6"x3"x2"DP PARTIAL B.O.	1

CU. FT. CONC.	SQ. FT. W.W.F.
25.4 (0.94)	80
APPROXIMATE WEIGHT	
3,810	



August 23, 2020

**CXT**  
**Precast Products**  
6707 E. Flamingo Ave. Bldg 300, Nampa, ID 83687  
901 N. Highway 77 Hillsboro, TX 76645  
362 Waverly Road Williamstown, WV 26187

PROJECT TITLE  
**SANTIAGO**  
**BUILDING NUMBER S-301**

NOTICE  
The information contained herein is proprietary and the exclusive property of CXT Incorporated. The information may only be used by the original recipient for the purpose intended. Reproduction or distribution of this information is strictly prohibited without the prior written consent of CXT Incorporated. By allowing use of this information, CXT Incorporated grants no warranty, express or implied, including a warranty of merchantability or of fitness for a particular purpose.

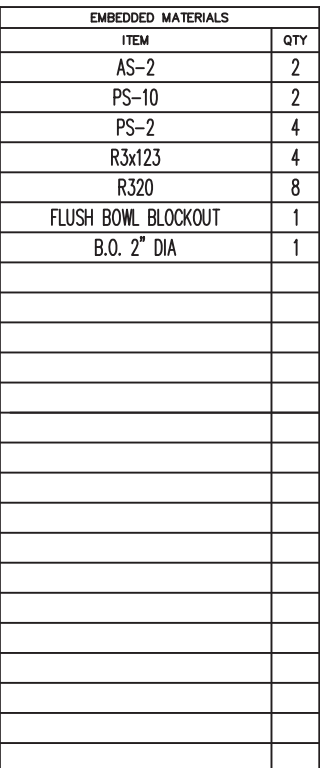
CXT Incorporated			
REV.	DESCRIPTION	APPROVAL	DATE
SCALE	3/8"=1'-0"	DATE	07-15-20
DRAWN	FMS	FILE NO.	S-301
CHECKED	FMS	PLOT	16

**WALL PANEL**  
**MARK W9**

DWG NO.	SHEET	REV.
<b>S-16</b>	16	37

## W10 BLOCKOUTS

## W10 EMBEDS



  
**Precast Products**  
6707 E. Flamingo Ave. Bldg 300, Nampa, ID 83687  
901 N. Highway 77 Hillsboro, TX 76645  
362 Waverly Road Williamstown, WV 26187

**NOTICE**

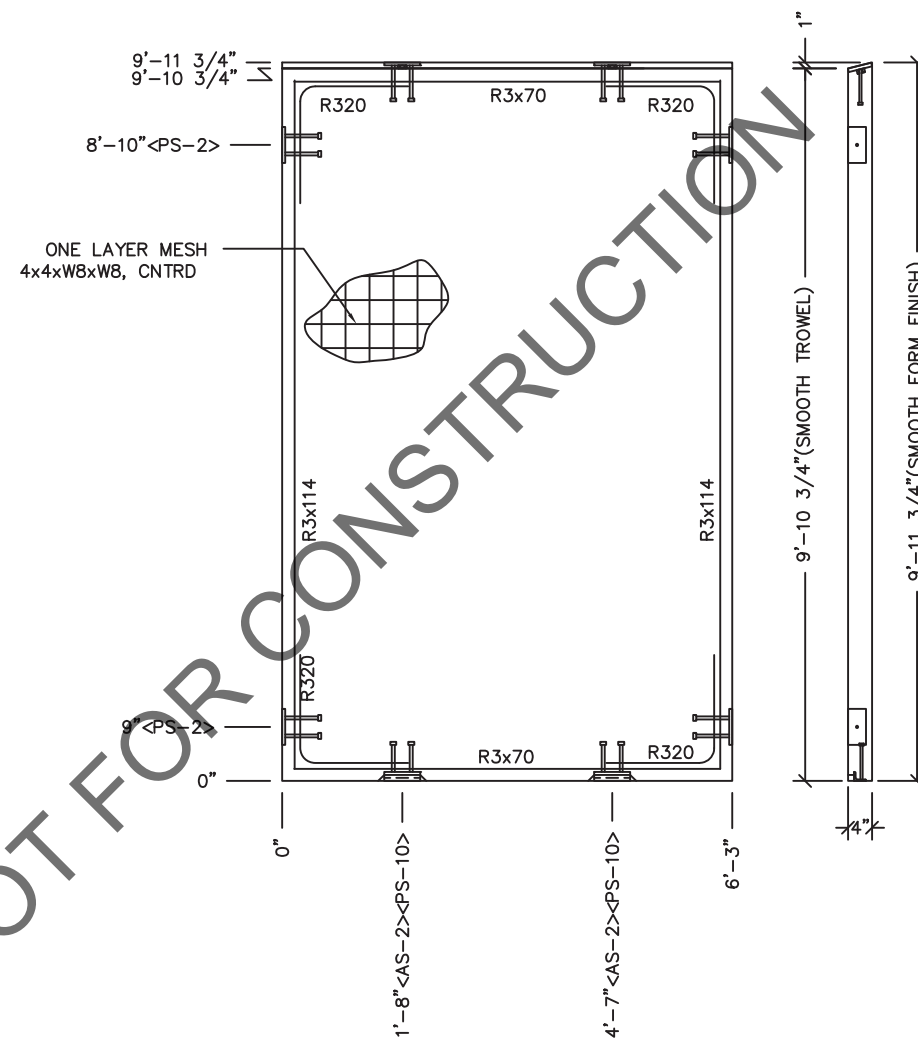
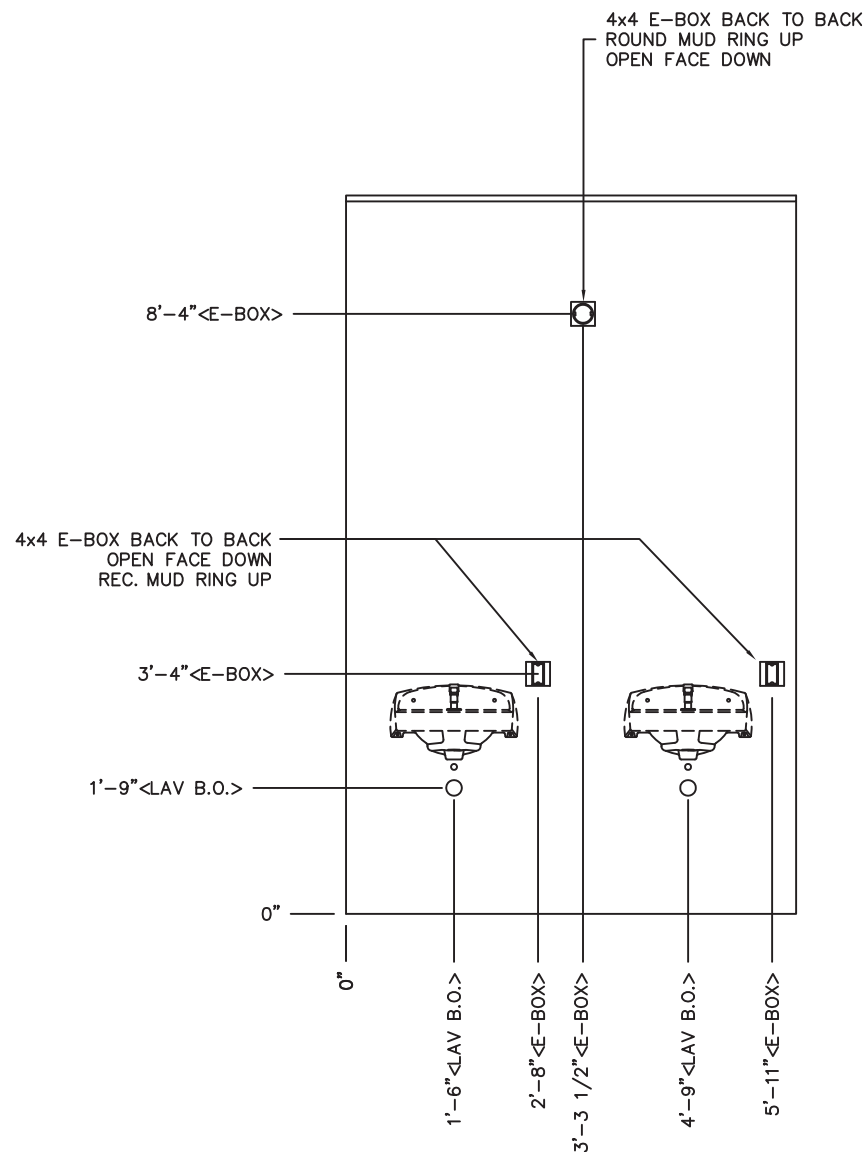
The information contained herein is proprietary and the exclusive property of CXT Incorporated. The information may only be used by the original recipient for the purpose intended. Reproduction or distribution of this information is strictly prohibited without the prior written consent of CXT Incorporated. By allowing use of this information, CXT Incorporated grants no warranty, express or implied, including a warranty of merchantability or of fitness for a particular purpose.

REV.	DESCRIPTION	APPROVAL	DATE	
SCALE	$\frac{3}{8} = 1'' - 0^{\circ}$	DATE	07-15-20	
DRAWN	FMS	FILE NO.	S-301	
CHECKED	FMS	PLOT	16	

DWG NO.	SHEET 17	REV.
S-17	37	

NOTES:

1. WALL THICKNESS = 4"
2. REINFORCING BARS TO BE PLACED IN PAIRS  
ONE EACH FACE OF PANEL W/ 3/4" MIN. COVER

[illegible]

CU. FT. CONC.	SQ. FT. W.W.F.
20.7 (0.77)	61
APPROXIMATE WEIGHT	
3,105	



August 23, 2020



## Precast Products

6707 E. Flamingo Ave. Bldg 300, Nampa, ID 83687  
901 N. Highway 77 Hillsboro, TX 76645  
362 Waverly Road Williamstown, WV 26187

PROJECT TITLE  
SANTIAGO  
BUILDING NUMBER S-301

**NOTICE**

The information contained herein is proprietary and the exclusive property of CXT Incorporated. The information may only be used by the original recipient for the purpose intended. Reproduction or distribution of this information is strictly prohibited without the prior written consent of CXT Incorporated. By allowing use of this information, CXT Incorporated grants no warranty, express or implied, including a warranty of merchantability or of fitness for a particular purpose.

CXT Incorporated

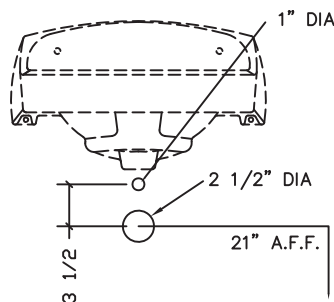
[illegible]

WALL PANEL  
MARK W12

DWG NO.	SHEET	REV.
S-18	18	
	37	

BLOCKOUT  
DETAIL

LAVATORY DETAIL  
AMERICAN STANDARD 0356.421



PRELIMINARY - NOT FOR CONSTRUCTION

OUTS

3'-3 1/2" <E-BOX>

4'-9" <LAV B.O.>

5'-11" <E-BOX>

9'-10 3/4" <PS-2>

8'-10" <PS-2>

ONE LAYER MESH  
4x4xW8xW8, CNTRD

0"

1'-8" <AS-2> <PS-10>

4'-7" <AS-2> <PS-10>

6'-3"

0"

9" <PS-2>

R320

R3x70

R3x114

R320

R320

R3x70

R320

EMBEDS

www.p-e-i.com  
**PROGRESSIVE ENGINEERING, INC.**  
 58640 STATE ROAD 15  
 GOSHEN, INDIANA 46528  
 (574) 533-0337 - Phone  
 (574) 533-9736 - Fax

STATE OF CALIFORNIA DESIGN APPROVAL AGENCY  
STATE OF CALIFORNIA APPROVED

**This document is certified as being in conformance with  
California Health & Safety - Code Section 18028**

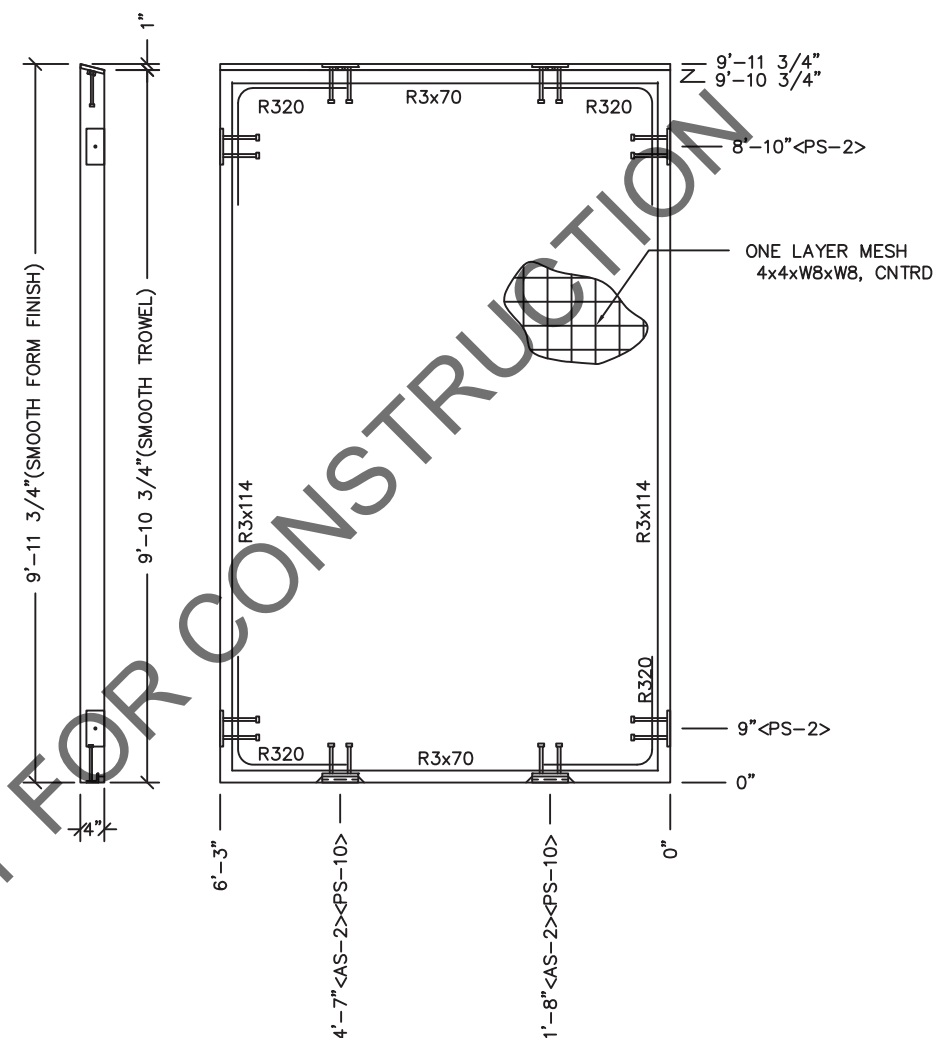
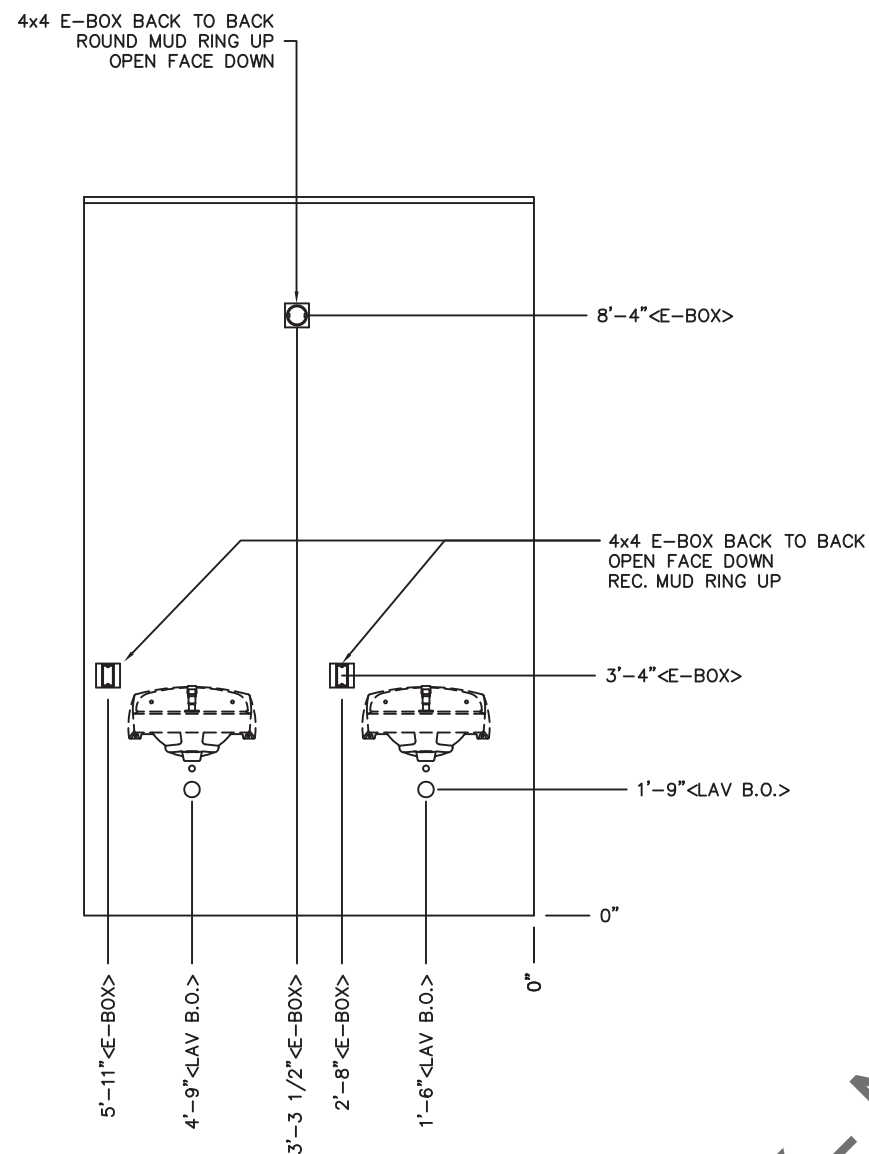
PLAN APPROVAL NO.:	<u>PEI 20-4411</u>
APPROVED BY:	<u>IPH</u>
DATE APPROVED:	<u>08/24/2020</u>
DATE OF EXPIRATION:	<u>11/24/2021</u>

Approval of this document does not authorize or approve any omission or deviation from the requirement of the applicable State codes.

NOTES:

1. WALL THICKNESS = 4"
2. REINFORCING BARS TO BE PLACED IN PAIRS  
ONE EACH FACE OF PANEL W/ 3/4" MIN. COVER

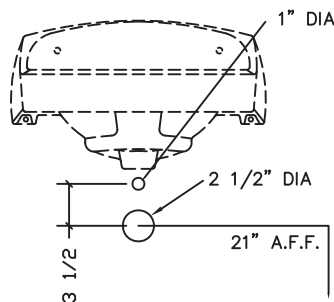




## BLOCKOUTS

## EMBEDS

BLOCKOUT DETAIL	LAVATORY DETAIL AMERICAN STANDARD 0356.421
--------------------	---



[www.p-e-i.com](http://www.p-e-i.com)  
**PROGRESSIVE ENGINEERING, INC.**  
 58640 STATE ROAD 15  
 GOSHEN, INDIANA 46528  
 (574) 533-0337 - Phone  
 (574) 533-9736 - Fax

STATE OF CALIFORNIA DESIGN APPROVAL AGENCY  
STATE OF CALIFORNIA APPROVED

**This document is certified as being in conformance with  
California Health & Safety - Code Section 18028**

PLAN APPROVAL NO.:	<u>PEI 20-4411</u>
APPROVED BY:	<u>IPH</u>
DATE APPROVED:	<u>08/24/2020</u>
DATE OF EXPIRATION:	<u>11/24/2021</u>

Approval of this document does not authorize or approve any omission or deviation from the requirement of the applicable State codes.

NOTES:

1. WALL THICKNESS = 4"
2. REINFORCING BARS TO BE PLACED IN PAIRS  
ONE EACH FACE OF PANEL W/ 3/4" MIN. COVER

[illegible]

CU. FT. CONC.	SQ. FT. W.W.F.
20.7 (0.77)	61

APPROXIMATE WEIGHT  
3,105



August 23, 2020



## Precast Products

6707 E. Flamingo Ave. Bldg 300, Nampa, ID 83687  
901 N. Highway 77 Hillsboro, TX 76645  
362 Waverly Road Williamstown, WV 26187

PROJECT TITLE

**SANTIAGO**

**BUILDING NUMBER S-301**

**NOTICE**

The information contained herein is proprietary and the exclusive property of CXT Incorporated. The information may only be used by the original recipient for the purpose intended. Reproduction or distribution of this information is strictly prohibited without the prior written consent of CXT Incorporated. By allowing use of this information, CXT Incorporated grants no warranty, express or implied, including a warranty of merchantability or of fitness for a particular purpose.

CXT Incorporated

REV.	DESCRIPTION	APPROVAL	DATE
SCALE	3/8"=1'-0"	DATE	07-15-20
DRAWN	FMS	FILE NO.	S-301
CHECKED	FMS	PLOT	16

WALL PANEL  
MARK W13

DWG NO.	SHEET	REV.
S-19	19	
	37	



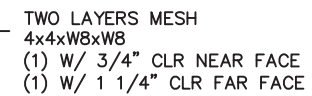
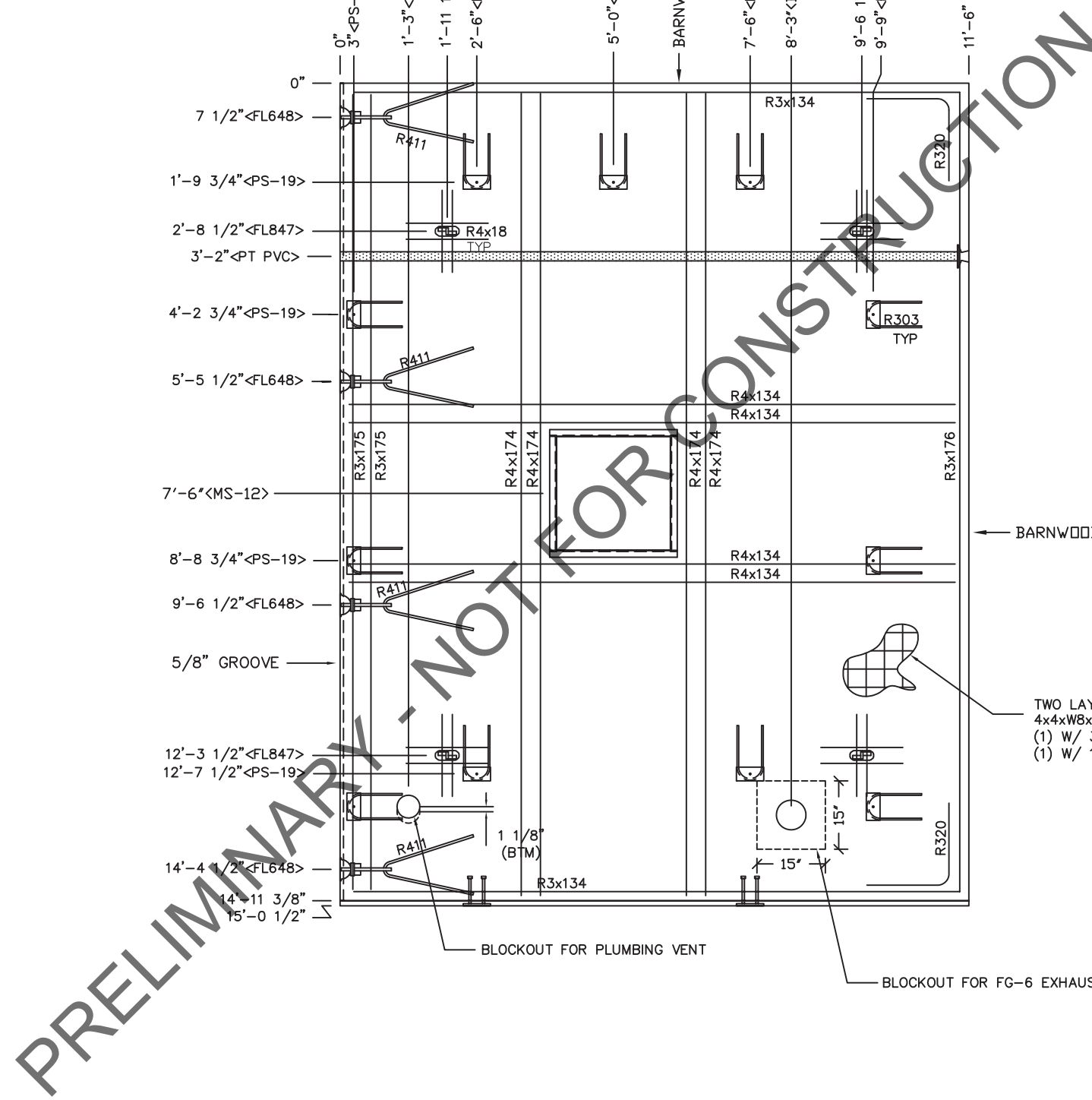












NOTES:

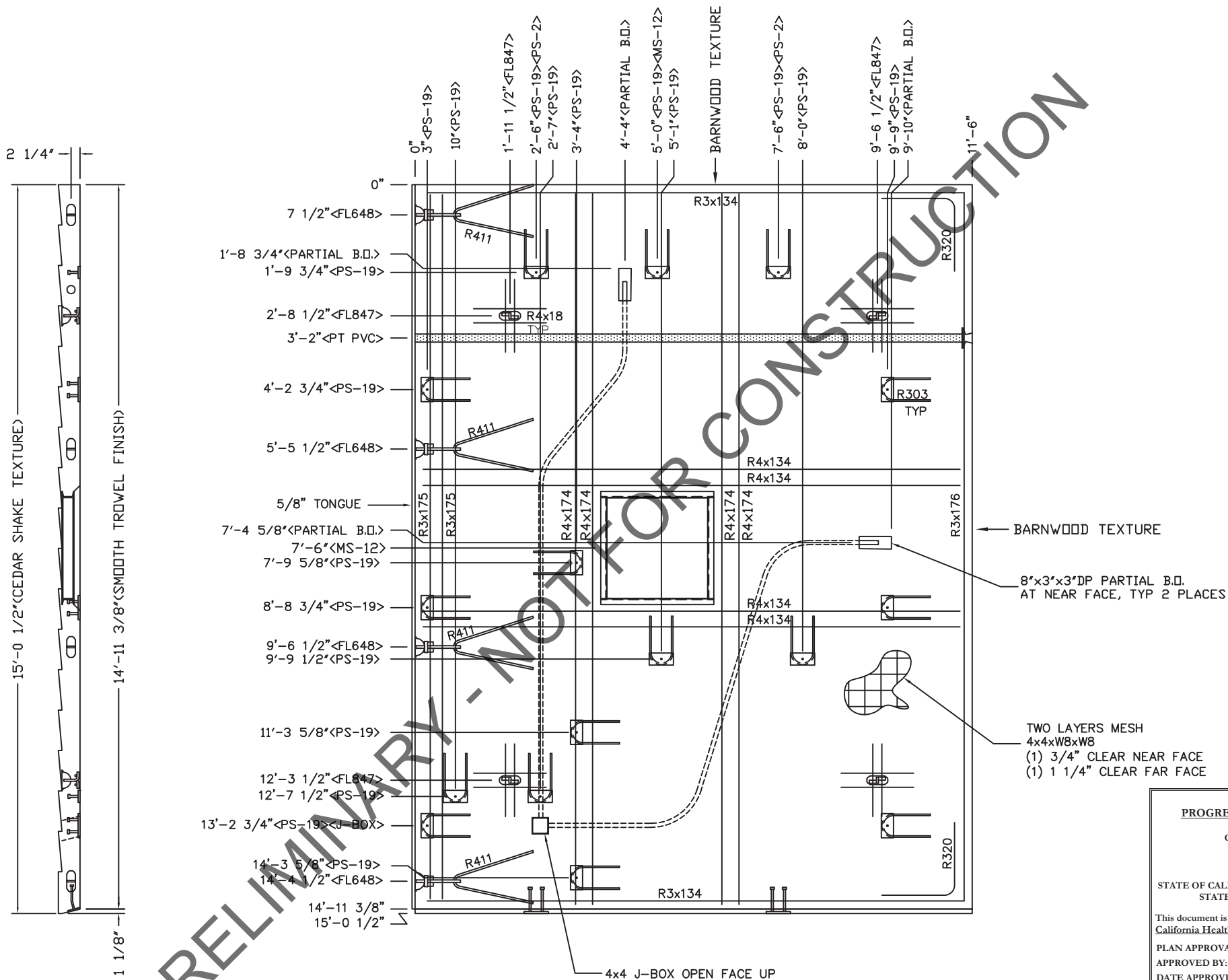
1. ROOF THICKNESS = 4 1/2" MIN + FINISH
2. EXCEPT R303, R411, R3x175, R4x18, R4x174 & R4x134 BARS TO BE PLACED IN PAIRS, ONE EACH FACE OF PANEL W/ 1 1/4" MIN. COVER
3. BARS R4x18, R4x134 & R4x174 TO BE PLACED W/ 1" COVER NEAR FACE.
4. ALL OTHER BARS TO BE CENTERED IN PANEL



Approval of this document does not authorize or approve any omission or deviation from the requirement of the applicable State codes.

- |         |       |      |
|---------|-------|------|
| DWG NO. | SHEET | REV. |
| S-25    | 25    |      |
|         | 37    |      |





- NOTES:
1. ROOF THICKNESS = 4 1/2" MIN + FINISH
  2. EXCEPT R303, R411, R3x175, R4x18, R4x174 & R4x134 BARS TO BE PLACED IN PAIRS, ONE EACH FACE OF PANEL W/ 1 1/4" MIN. COVER
  3. BARS R4x18, R4x134 & R4x174 TO BE PLACED W/ 1' COVER NEAR FACE.
  4. ALL OTHER BARS TO BE CENTERED IN PANEL

EMBEDDED MATERIALS	
ITEM	QTY
PS-19	16
FL-847	4
FL-648	4
R411	4
R303	16
R3x134	4
R3x175	2
R3x176	2
R320	4
PT CHUCK	1
1" PVC SCHD40 x11'-3"	1
PS-2	2
R4x18	16
4x4 J-BOX	1
8"x3"x3" DP PARTIAL B.O.	2
MS-12	1
R4x134	4
R4x174	4
CU. FT. CONC.	SQ. FT. W.W.F.
69.7 (2.58)	344

APPROXIMATE WEIGHT	
10,455	



August 23, 2020

**CXT**  
**Precast Products**  
6707 E. Flamingo Ave. Bldg 300, Nampa, ID 83687  
901 N. Highway 77 Hillsboro, TX 76645  
362 Waverly Road Williamstown, WV 26187

PROJECT TITLE  
**SANTIAGO**  
BUILDING NUMBER S-301

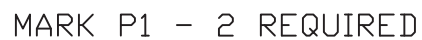
NOTICE  
The information contained herein is proprietary and the exclusive property of CXT Incorporated. The information may only be used by the original recipient for the purpose intended. Reproduction or distribution of this information is strictly prohibited without the prior written consent of CXT Incorporated. By allowing use of this information, CXT Incorporated grants no warranty, express or implied, including a warranty of merchantability or of fitness for a particular purpose.

CXT Incorporated			

REV.	DESCRIPTION	APPROVAL	DATE
SCALE	3/8"=1'-0"	DATE	07-15-20
DRAWN	FMS	FILE NO.	S-301
CHECKED	FMS	PLOT	16

**ROOF SLAB**  
**MARK R2-L**

DWG NO.	SHEET	REV.
S-27	27	37

[illegible]

74138

WILLIAM RICHARD HEIDEN, III

REGISTERED PROFESSIONAL ENGINEER

STATE OF CALIFORNIA

CIVIL



6707 E. Flamingo Ave. Bldg 300, Nampa, ID 83687  
901 N. Highway 77 Hillsboro, TX 76645  
362 Waverly Road Williamstown, WV 26187

**SANTIAGO**  
**BUILDING NUMBER S-301**

The information contained herein is proprietary and the exclusive property of CXT Incorporated. The information may only be used by the original recipient for the purpose intended. Reproduction or distribution of this information is strictly prohibited without the prior written consent of CXT Incorporated. By allowing use of this information, CXT Incorporated grants no warranty, express or implied, including a warranty of merchantability or of fitness for a particular purpose.

CXT Incorporated

REV.	DESCRIPTION	APPROVAL	DATE
SCALE	3/8"=1'-0"	DATE	07-16-20
DRAWN	FMS	FILE NO.	S-301
CHECKED	FMS	PLOT	32

INTERIOR PANEL  
MARK P1 (2 REQUIRED)

DWG NO.	SHEET	REV.
S-28	28	
	37	



The following drawings are preliminary for bidding purposes only. Contractor shall not use these drawings for permit or construction purposes. A final set of stamped plans specifically for the restroom being fabricated for this project will be provided to the contractor at a later date.

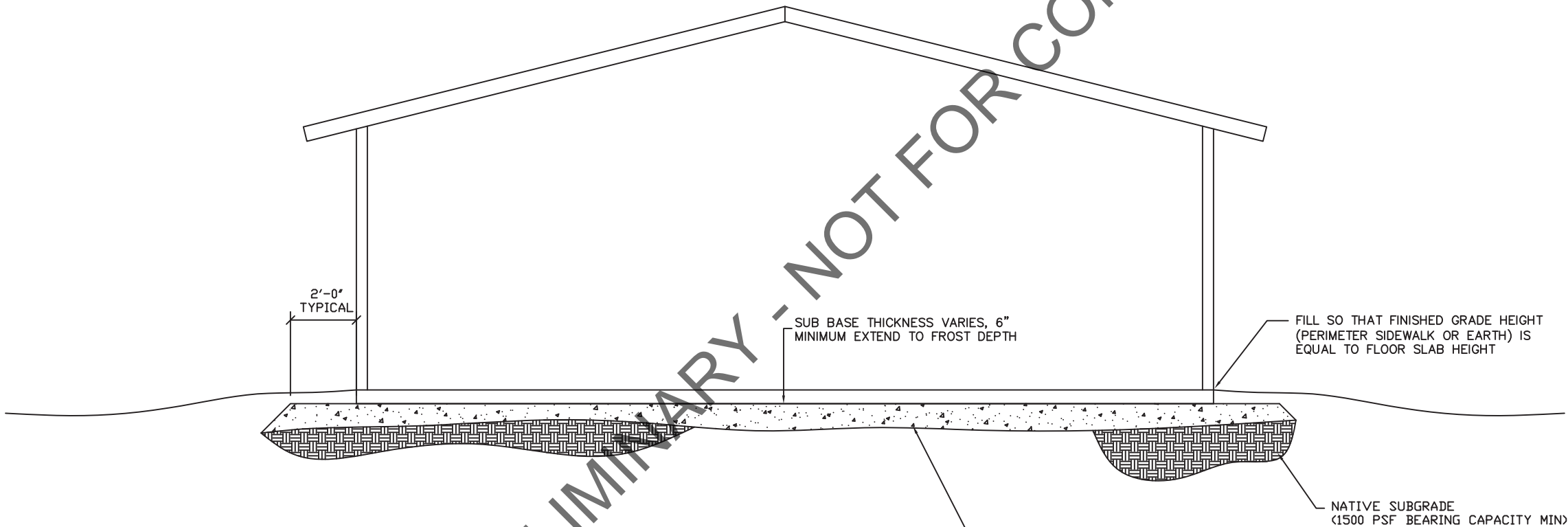
NOTE:

THIS FACTORY ASSEMBLED BUILDING, AS CONSTRUCTED, PROVIDES A RIGID BOX TYPE STRUCTURAL SYSTEM. VERTICAL LOADS ARE TRANSFERRED PRIMARILY THROUGH BEARING WALLS TO THE STRUCTURAL SLAB FLOOR OF THE BUILDING. THE VERTICAL LOADS ARE THEN DISTRIBUTED THROUGH THE REINFORCED CONCRETE FLOOR TO THE PREPARED GRANULAR, NON-FROST SUSCEPTIBLE (NFS) SUB-BASE WHICH DISTRIBUTES THE VERTICAL LOADS IN RELATIVELY UNIFORM FASHION TO THE NATIVE SUB-GRADE. AS WITH MOST CONSTRUCTION, THIS DOES REQUIRE THE NATIVE SUB-GRADE TO BE STRIPPED OF VEGETATION AND TOP SOIL PRIOR TO PLACEMENT OF THE PREPARED GRANULAR SUB-BASE. DUE TO THE INHERENT STIFFNESS OF THE BUILDING, IT WILL REMAIN SAFE AND STRUCTURALLY SOUND IN THE UNLIKELY EVENT OF FREEZING ACTION BELOW THE BUILDING REGARDLESS OF NATURAL FREEZE/ THAW CYCLES ANTICIPATED TO BE ENCOUNTERED IN THE STATE OF CALIFORNIA.

LATERAL LOADS ARE TRANSFERRED TO THE GROUND THROUGH FRICTIONAL RESISTANCE WITHOUT SLIDING OR SHIFTING BETWEEN THE BUILDING FLOOR SLAB AND THE PREPARED SOIL AND GRAVEL SUB-BASE ON WHICH THE BUILDING RESTS. SEISMIC ANALYSES ARE BASED ON LOADS DETERMINED IN ACCORDANCE WITH THE INTERNATIONAL BUILDING CODE USING PARAMETERS WHICH MEET OR EXCEED THE CODE PRESCRIBED REQUIREMENTS FOR THIS INSTALLATION.

THIS BUILDING AS DESIGNED, RESTING ON A PROPERLY PREPARED GRANULAR SUB-BASE WILL BE SAFE AND STRUCTURALLY SOUND FOR VERTICAL AND LATERAL LOADS AS DISCUSSED ABOVE. A FULL DEPTH FOUNDATION WALL AT THE BUILDING PERIMETER AND AN ANCHORAGE SYSTEM, TYPICAL FOR OTHER TYPES OF BUILDING CONSTRUCTION, ARE NOT REQUIRED FOR THIS BUILDING.

THE "FOUNDATION" FOR THIS STRUCTURE IS ESSENTIALLY THE COMBINATION OF THE COMPACTED SUB-BASE MATERIAL AND THE BUILDING'S REINFORCED SLAB. THE COMBINATION OF THE COMPACTED SUB-BASE MATERIAL AND THE BUILDING'S REINFORCED SLAB NEED TO BE AT LEAST 12" THICK AND THE COMPACTED SUB-BASE MATERIAL SHALL EXTEND BELOW THE LOCAL FROST DEPTH



www.p-e-i.com  
**PROGRESSIVE ENGINEERING, INC.**  
58640 STATE ROAD 15  
GOSHEN, INDIANA 46528  
(574) 533-0337 - Phone  
(574) 533-9736 - Fax

STATE OF CALIFORNIA DESIGN APPROVAL AGENCY  
STATE OF CALIFORNIA APPROVED

This document is certified as being in conformance with  
California Health & Safety - Code Section 18028

PLAN APPROVAL NO.: PEI 20-4411  
APPROVED BY: IPH  
DATE APPROVED: 08/24/2020  
DATE OF EXPIRATION: 11/24/2021

Approval of this document does not authorize or approve any omission or deviation from the requirement of the applicable State codes.

PRIOR TO PLACEMENT OF BUILDING A PROPERLY PREPARED SUB-BASE SHALL BE PROVIDED. SUB-BASE SHALL BE A MINIMUM OF 6" THICK AND CONSIST OF ¾" MINUS CRUSHED ROCK (ROAD BASE MATERIAL) COMPACTED TO 95% OF OPTIMUM DENSITY IN ACCORDANCE WITH ASTM D 1557. FINISHED SURFACE OF SUB-BASE SHALL BE FLAT AND LEVEL, WITH A MAXIMUM DEVIATION OF -½", +0" FROM A TRUE HORIZONTAL PLANE. REFER TO BUILDING HANDLING SHEET FOR SUB-BASE REQUIREMENTS DURING BUILDING PLACEMENT. (PREPARED SUB-BASE NOT BY CXT).



August 23, 2020

**Precast Products**  
6707 E. Flamingo Ave. Bldg 300, Nampa, ID 83687  
901 N. Highway 77 Hillsboro, TX 76645  
362 Waverly Road Williamstown, WV 26187

PROJECT TITLE  
**SANTIAGO**  
BUILDING NUMBER **S-301**

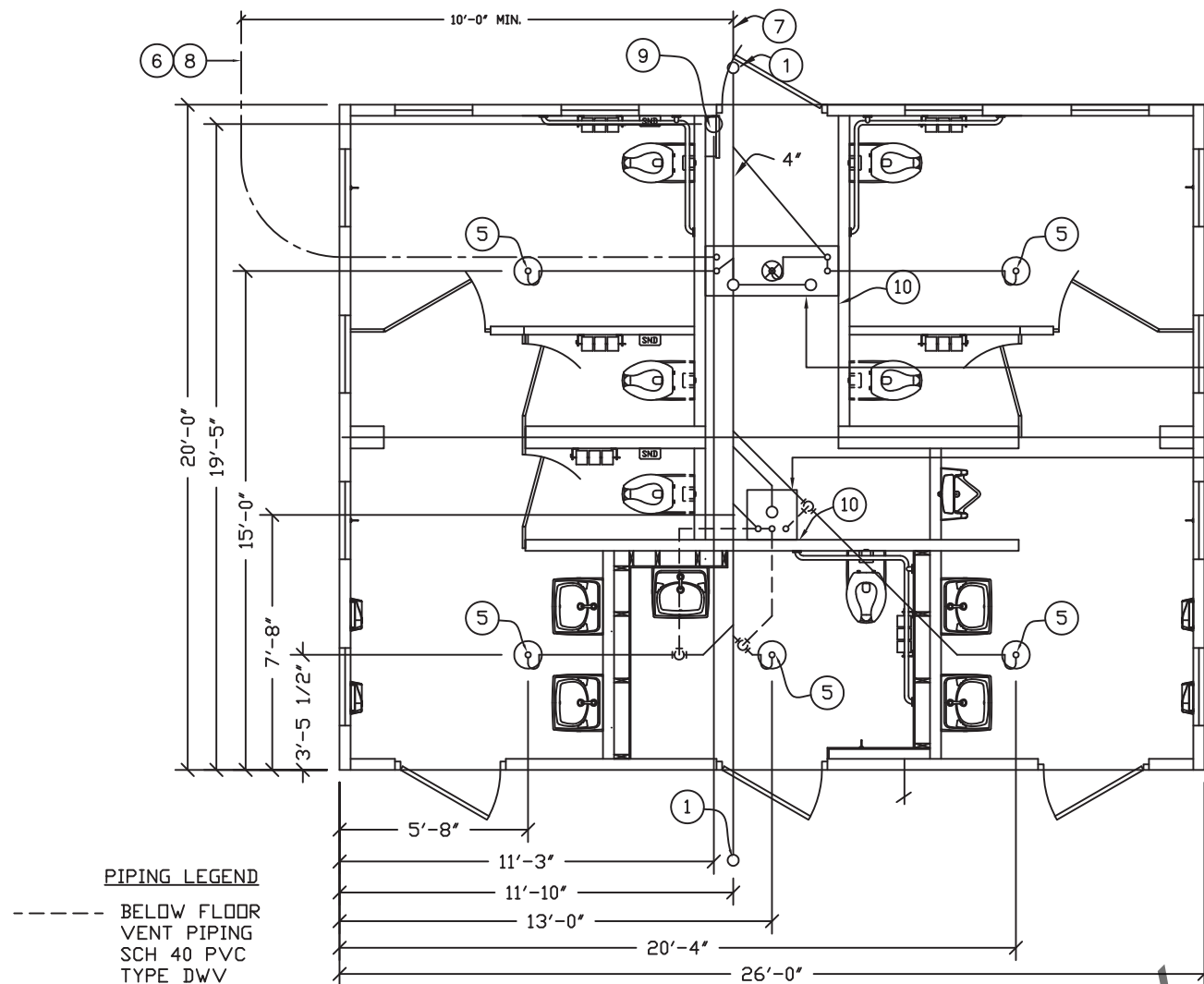
NOTICE  
The information contained herein is proprietary and the exclusive property of CXT Incorporated. The information may only be used by the original recipient for the purpose intended. Reproduction or distribution of this information is strictly prohibited without the prior written consent of CXT Incorporated. By allowing use of this information, CXT Incorporated grants no warranty, express or implied, including a warranty of merchantability or of fitness for a particular purpose.

CXT Incorporated			
REV.	DESCRIPTION	APPROVAL	DATE
SCALE	1/4"=1'-0"	DATE	06-03-20
DRAWN	FM5	FILE NO.	S-301
CHECKED	FM5	PLOT	48

FOUNDATION DETAIL

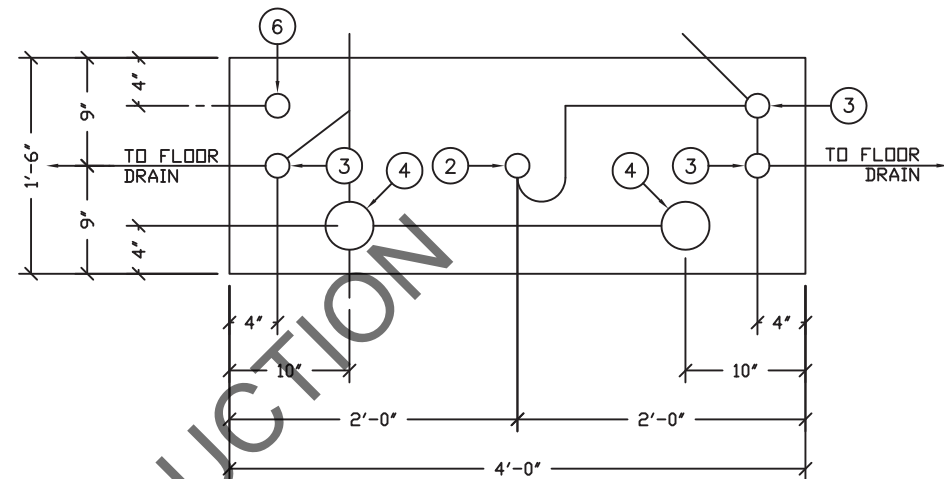
DWG NO.	SHEET	REV.
S-29	29	
	37	

ALL PIPING INDICATED ON  
THIS SHEET IS NOT BY CXT

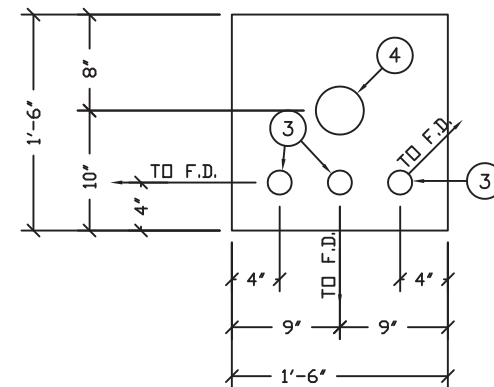


SEE 18" x 48" BLOCKOUT DETAIL 'A'

SEE 18" x 18" BLOCKOUT DETAIL 'B'



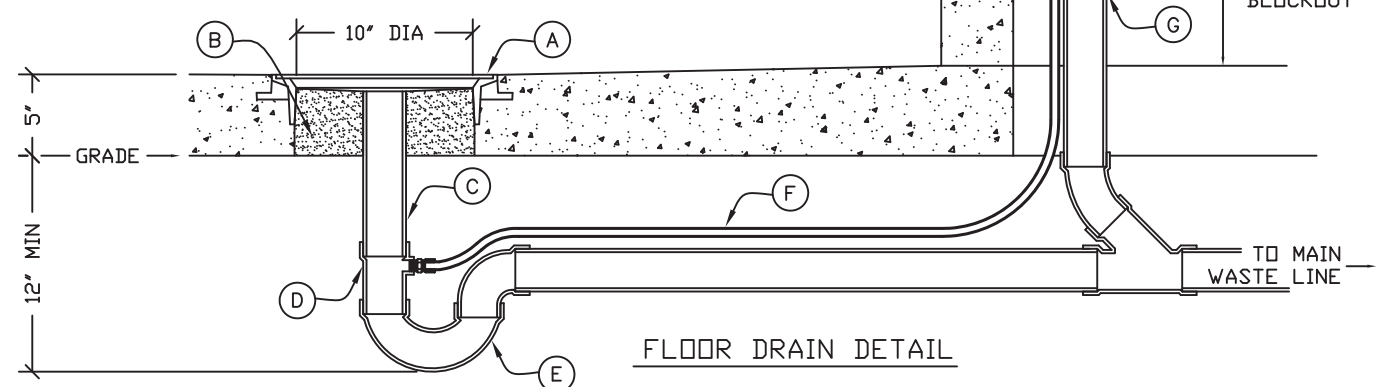
18" x 48" BLOCKOUT DETAIL "A"



18" x 18" BLOCKOUT DETAIL "B"

**FLOOR DRAIN BLOCKOUTS & BELOW FLOOR PIPING**

- A. CAST-IN DRAIN HOUSING (10" INSIDE DIM - PROVIDED BY CXT) (P-9)  
B. FIELD INSTALLED GROUT, SLOPE TO DRAIN (CXT PROVIDED-INSTALLATION NOT BY CXT)  
C. 2" WASTE PIPE - STUB UP 12" ABOVE GRADE (NOT BY CXT)  
D. TAPPED P-TRAP ADAPTER (NOT BY CXT)  
E. P-TRAP ASSEMBLY (NOT BY CXT)  
F. 1/2" O.D. COPPER TRAP PRIMER LINE (NOT BY CXT)  
G. 2" FLOOR DRAIN VENT RISER - STUB UP 12" ABOVE GRADE (NOT BY CXT)  
H. TRAP PRIMER MANIFOLD (PRE-PLUMBED AND INSTALLED BY CXT)  
I. 1/2" SHUT OFF VALVE (PRE-PLUMBED AND INSTALLED BY CXT)



August 23, 2020



**Precast Products**

6707 E. Flamingo Ave. Bldg 300, Nampa, ID 83687  
901 N. Highway 77 Hillsboro, TX 76645  
362 Waverly Road Williamstown, WV 26187

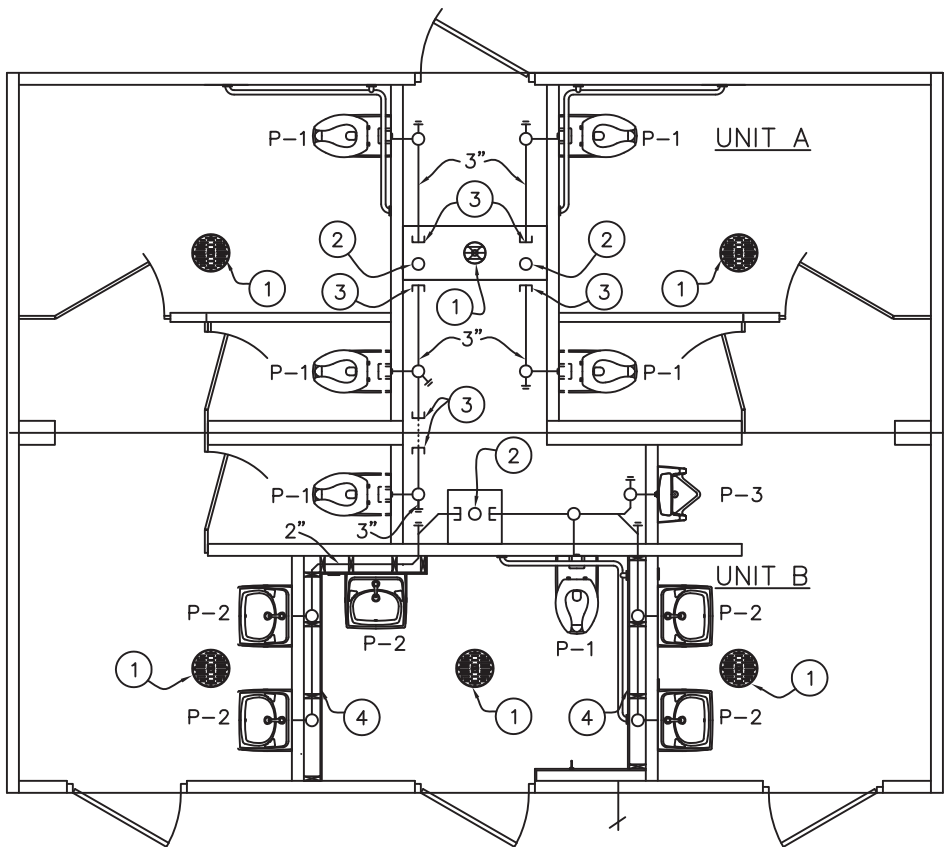
PROJECT TITLE  
**SANTIAGO**  
BUILDING NUMBER S-301

NOTICE  
The information contained herein is proprietary and the exclusive property of CXT Incorporated. The information may only be used by the original recipient for the purpose intended. Reproduction or distribution of this information is strictly prohibited without the prior written consent of CXT Incorporated. By allowing use of this information, CXT Incorporated grants no warranty, express or implied, including a warranty of merchantability or of fitness for a particular purpose.  
CXT Incorporated

REV.	DESCRIPTION	APPROVAL	DATE
SCALE	3/16"=1'-0"	DATE	06-03-20
DRAWN	FM5	FILE NO.	S-301
CHECKED	FM5	PLOT	48

**FLOOR DRAIN LOCATIONS & BELOW FLOOR PIPING**

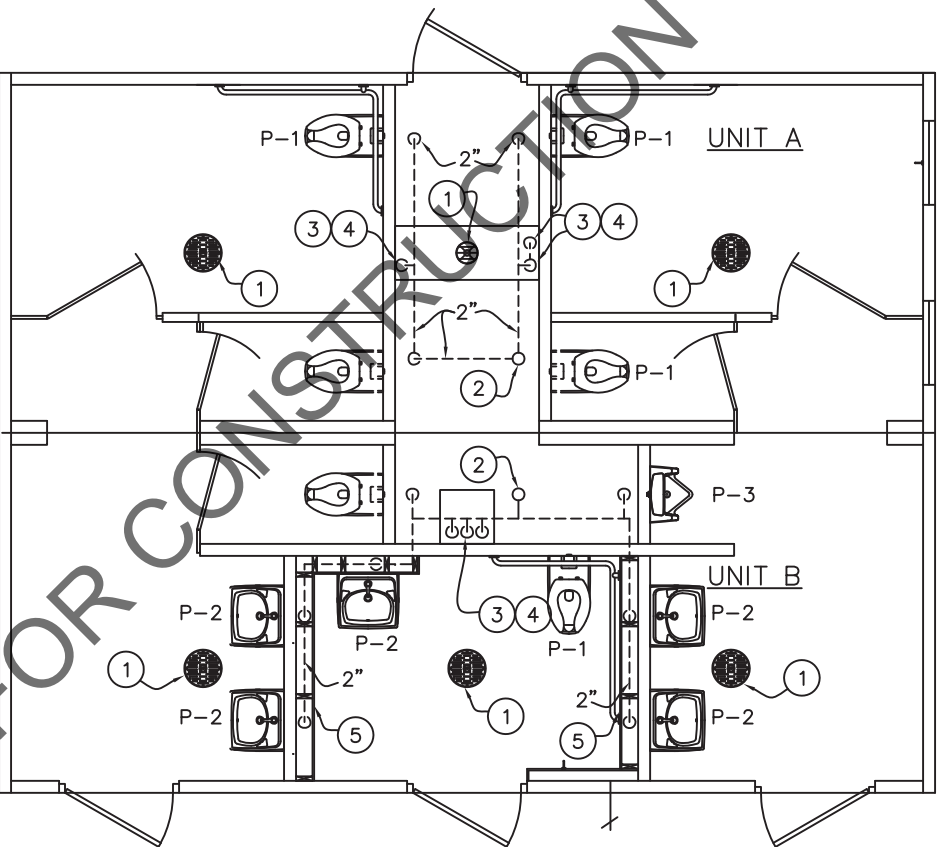
DWG NO.	S-30	SHEET NO.	30	REV.	37
---------	------	-----------	----	------	----



WASTE PIPING

WASTE PIPING – KEY NOTES

- 2" FLOOR DRAIN P-8, FIELD INSTALLED (NOT BY CXT)
- 4" WASTE THROUGH FLOOR, FIELD INSTALLED (NOT BY CXT)
- PROVIDE TEST PLUG IN END OF WASTE PIPE. CONTINUATION OF PIPING IS FIELD INSTALLED & NOT BY CXT.
- ROUTE PLUMBING INSIDE FURRED WALL.



VENT PIPING

VENT PIPING – KEY NOTES

- 2" FLOOR DRAIN P-8, FIELD INSTALLED (NOT BY CXT)
- 4" VENT THROUGH ROOF.
- 2" VENT WITH TEST PLUG.
- FIELD INSTALLED 2" VENT PIPING FROM FLOOR DRAINS. (NOT BY CXT)
- ROUTE PLUMBING INSIDE FURRED WALL.

PIPING LEGEND

----- COLD WATER  
----- HOT WATER  
----- VENT PIPING  
SCH 40 ABS OR PVC TYPE DWV

----- WASTE PIPE:  
SCH 40 ABS, ASTM D2661, OR PVC, ASTM D2665, TYPE DWV  
..... FIELD PIPING (NOT BY CXT)

www.p-e-i.com  
**PROGRESSIVE ENGINEERING, INC.**  
58640 STATE ROAD 15  
GOSHEN, INDIANA 46528  
(574) 533-0337 - Phone  
(574) 533-9736 - Fax

STATE OF CALIFORNIA DESIGN APPROVAL AGENCY  
STATE OF CALIFORNIA APPROVED

This document is certified as being in conformance with  
California Health & Safety - Code Section 18028

PLAN APPROVAL NO.: **PEI 20-4411**  
APPROVED BY: **IPH**  
DATE APPROVED: **08/24/2020**  
DATE OF EXPIRATION: **11/24/2021**

Approval of this document does not authorize or approve any omission or deviation from the requirement of the applicable State codes.



August 23, 2020



**Precast Products**  
6707 E. Flamingo Ave. Bldg 300, Nampa, ID 83687  
901 N. Highway 77 Hillsboro, TX 76645  
362 Waverly Road Williamstown, WV 26187

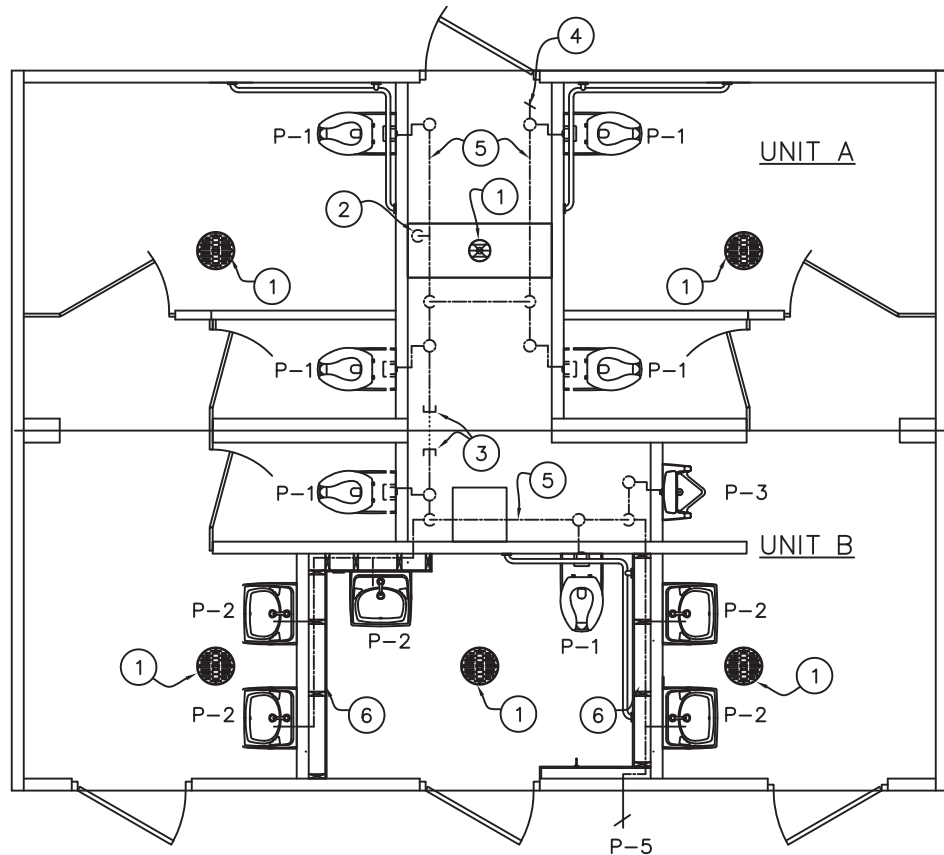
PROJECT TITLE  
**SANTIAGO**  
BUILDING NUMBER S-301

NOTES  
The information contained herein is proprietary and the exclusive property of CXT Incorporated. The information may only be used by the original recipient for the purpose intended. Reproduction or distribution of this information is strictly prohibited without the prior written consent of CXT Incorporated. By allowing use of this information, CXT Incorporated grants no warranty, express or implied, including a warranty of merchantability or of fitness for a particular purpose.  
CXT Incorporated

REV.	DESCRIPTION	APPROVAL	DATE
SCALE	3/16"=1'-0"	DATE	07-16-20
DRAWN	FM5	FILE NO.	S-301
CHECKED	FM5	PLOT	48

PLUMBING PLANS

DWG NO.	SHEET	REV.
S-31	31	37



WATER PIPING

WATER PIPING - KEY NOTES

- 2" FLOOR DRAIN, FIELD INSTALLED (P-8) (NOT BY CXT)
- FIELD INSTALLED 2" WATER SUPPLY WITH SHUT-OFF VALVE NEAR FLOOR. (NOT BY CXT)
- CAPPED WATER LINES. CONNECTION BETWEEN SIDES IS TO BE FIELD INSTALLED. (NOT BY CXT)
- 3/4" HOSE BIBB WITH VACUUM BREAKER AND WHEEL HANDLE.
- WATER PIPING ALONG WALL, SEE DIAGRAM #1 ON THIS DRAWING.
- ROUTE PLUMBING INSIDE FURRED WALL.

PIPING LEGEND

- COLD WATER  
----- HOT WATER  
----- VENT PIPING  
SCH 40 ABS OR PVC TYPE DWV  
----- WASTE PIPE:  
ABS, ASTM D2661, OR PVC, ASTM D2665, SCHED. 40  
----- FIELD PIPING (NOT BY CXT)

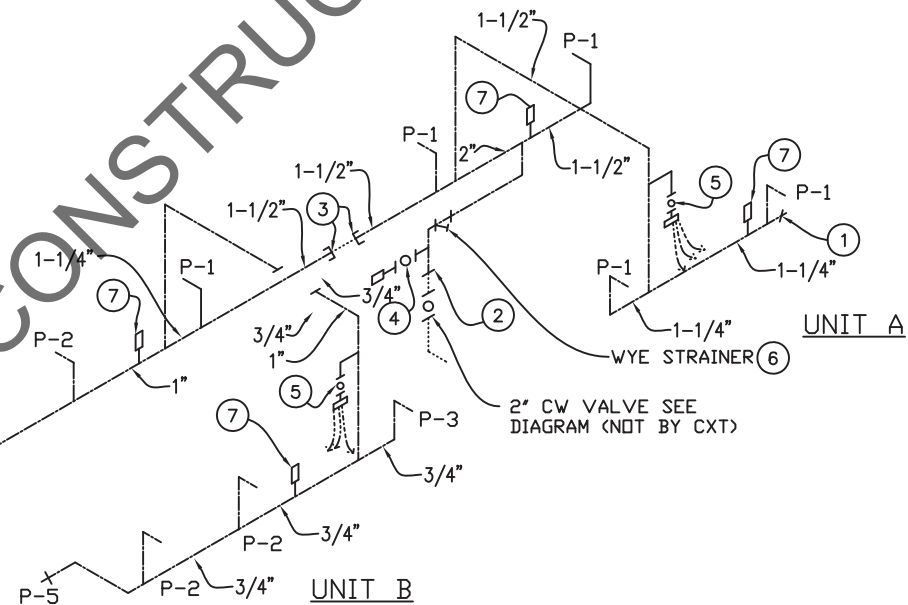
www.p-e-i.com  
**PROGRESSIVE ENGINEERING, INC.**  
58640 STATE ROAD 15  
GOSHEN, INDIANA 46528  
(574) 533-0337 - Phone  
(574) 533-9736 - Fax

STATE OF CALIFORNIA DESIGN APPROVAL AGENCY  
STATE OF CALIFORNIA APPROVED

This document is certified as being in conformance with  
California Health & Safety - Code Section 18028

PLAN APPROVAL NO.: PEI 20-4411  
APPROVED BY: IPH  
DATE APPROVED: 08/24/2020  
DATE OF EXPIRATION: 11/24/2021

Approval of this document does not authorize or approve any omission or deviation from the requirement of the applicable State codes.



WATER PIPING RISER DIAGRAM #1

NTS

WATER PIPING RISER - KEY NOTES

- 3/4" HOSE BIBB WITH VACUUM BREAKER & WHEEL HANDLE.
- TO THIS POINT BY CXT.
- PLUGGED WATER LINES TO THIS POINT, BY CXT. PIPING BETWEEN THESE POINTS, NOT BY CXT.
- 1/2" AIR QUICK CONNECTION W/ BALL VALVE FOR BLOWING OUT WATER PIPING.
- 1/2" BALL VALVE & CAPPED CW LINE FOR FIELD INSTALLED TRAP FOR BLOWING OUT WATER PIPING. PRIMER VALVE IF REQUIRED BY JURISDICTION HAVING AUTHORITY
- PROVIDE WYE STRAINER
- ASSE 1010 WATER HAMMER ARRESTOR SIOUX CHIEF HYDRA-RESTOR #654-C OR EQUAL.



August 23, 2020



**Precast Products**

6707 E. Flamingo Ave. Bldg 300, Nampa, ID 83687  
901 N. Highway 77 Hillsboro, TX 76645  
362 Waverly Road Williamstown, WV 26187

PROJECT TITLE  
**SANTIAGO**  
BUILDING NUMBER S-301

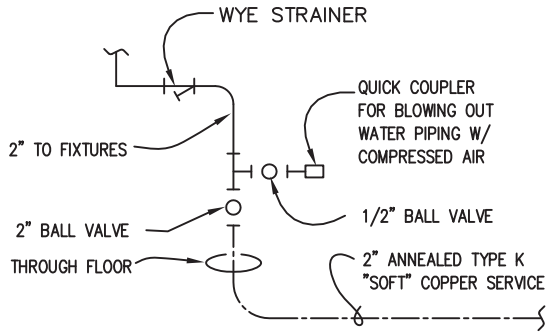
NOTE  
The information contained herein is proprietary and the exclusive property of CXT Incorporated. The information may only be used by the original recipient for the purpose intended. Reproduction or distribution of this information is strictly prohibited without the prior written consent of CXT Incorporated. By allowing use of this information, CXT Incorporated grants no warranty, express or implied, including a warranty of merchantability or of fitness for a particular purpose.  
CXT Incorporated

REV.	DESCRIPTION	APPROVAL	DATE
SCALE	3/16"=1'-0"	DATE	07-16-20
DRAWN	FM5	FILE NO.	S-301
CHECKED	FM5	PLOT	48

**PLUMBING PLAN  
& DIAGRAMS**

DWG NO.	SHEET	REV.
S-32	32	37

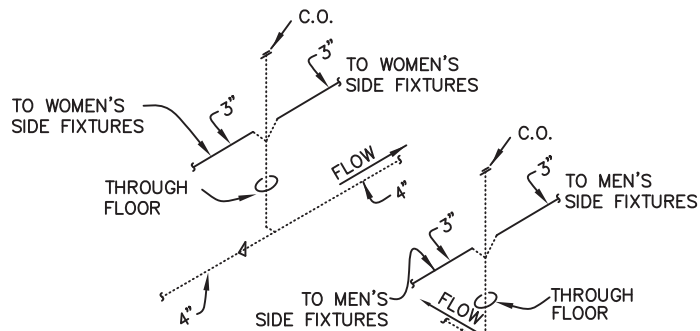




NOTE:  
THIS PIPING IS FIELD  
INSTALLED & NOT BY CXT

WATER SERVICE DETAIL

NTS



DETAIL OF FIELD INSTALLED  
WASTE CONNECTION

NTS

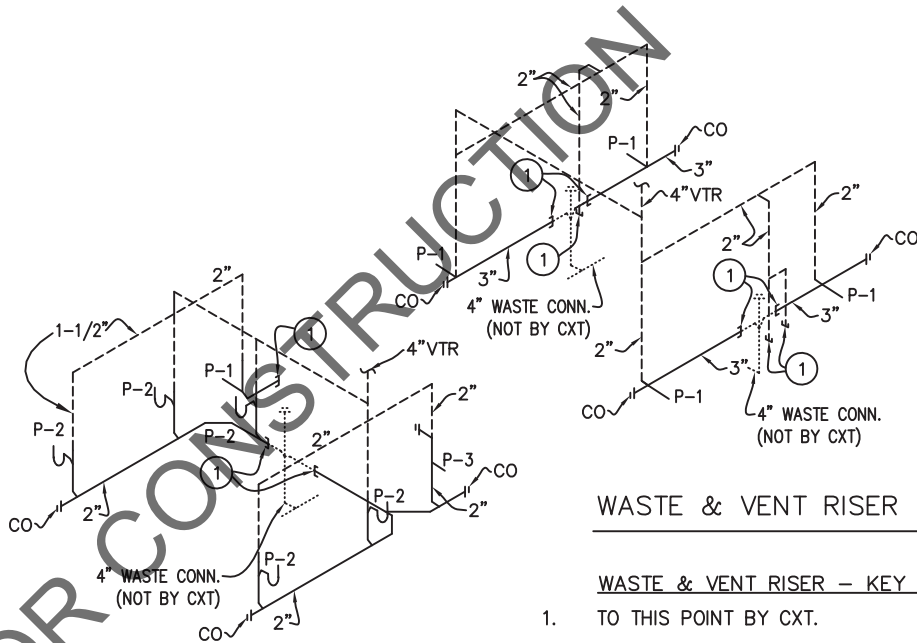
SPECIAL NOTES:

1. TOTAL FIXTURE COUNT (INCLUDES FLOOR DRAINS) : (22)
2. FLOWING PRESSURE: 45 PSI MIN, 80 PSI MAX
3. TOTAL DEVELOPED LENGTH = 35'-0"\*

\*APPROXIMATE DISTANCE FROM THE SOURCE TO THE FARTHEST FIXTURE

PIPING LEGEND

-----	COLD WATER	-----	WASTE PIPE:
-----	HOT WATER	-----	SCH 40 ABS, ASTM D2665, OR
-----		-----	PVC, ASTM D2665, TYPE DWV
-----	VENT PIPING	-----	FIELD PIPING
-----	SCH 40 ABS OR PVC TYPE DWV	-----	(NOT BY CXT)



WASTE & VENT RISER DIAGRAM

NTS

WASTE & VENT RISER - KEY NOTES

1. TO THIS POINT BY CXT.

PLUMBING FIXTURE SCHEDULE

SYM	DESCRIPTION	MANUFACTURER	MODEL #	FLUSH VALVE/FAUCET	TRAP	ACTUATOR	DRAIN	HW	CW	WASTE	VENT	NOTES
P-1	WATER CLOSET	AMERICAN STANDARD	2634.101 (W.C.) 5905.100 (W.C. SEAT)	SLOAN "ROYAL" #952-1.28 L-3 W=4"	-	SLOAN HY33A	-	-	1-1/4"	3"	2"	1,3
P-2	LAVATORY	AMERICAN STANDARD	0356.421 (LAV.)	SLS-7000	OFFSET 1.5x17GA.CP	-	-	-	1/2"	1-1/2"	1-1/2"	2,4
P-3	URINAL	AMERICAN STANDARD	6515.001 (URINAL)	SLOAN "ROYAL" #995-1	-	SLOAN HY33A	-	-	3/4"	2"	2"	-

SYM	DESCRIPTION	MANUFACTURER	MODEL #	FLUSH VALVE/FAUCET	TRAP	ACTUATOR	DRAIN	HW	CW	WASTE	VENT	NOTES
P-4					-	-	-	-				-
P-5	EXTERIOR HOSE BIB	WOODFORD	B65, LOCKING COVER					-	3/4"	-	-	-
P-6								-	-			
P-7					-	-	-	-	-	-	-	
P-8	FLOOR DRAIN	TRAVIS	RM54960 (RESTROOM & CONCESSION-QTY 5)	-	-	-	-	-	-	2"	2"	5
		SIoux CHIEF	840-2A (CHASE-QTY 1)	-	-	-	-	-	-	2"	2"	

- NOTES:
1. OFFSET FLUSH VALVE TAILPIECE PER ADA, RIGHT OR LEFT HAND, AS REQUIRED. PROVIDE FLUSH VALVE FOR 4" WALL THICKNESS.
  2. HAMMER ARRESTOR JRS520-T-C, FLOOR DRAIN S2005A025NBLP, TRAP PRIMER- MIFAB MM500, DISTR UNIT- MIFAB
  3. MOUNT RIM OF P-1 & P-3 AT 17" ABOVE FLOOR.
  4. 1/2X15 COMP ANG LAV BSCR1915AC.
  5. TRAP PRIMER- MIFAB MM500, DISTR UNIT- MIFAB

www.p-e-i.com  
**PROGRESSIVE ENGINEERING, INC.**  
58640 STATE ROAD 15  
GOSHEN, INDIANA 46528  
(574) 533-0337 - Phone  
(574) 533-9736 - Fax

STATE OF CALIFORNIA DESIGN APPROVAL AGENCY  
STATE OF CALIFORNIA APPROVED

This document is certified as being in conformance with  
California Health & Safety - Code Section 18028

PLAN APPROVAL NO.: **PEI 20-4411**  
APPROVED BY: **IPH**  
DATE APPROVED: **08/24/2020**  
DATE OF EXPIRATION: **11/24/2021**

Approval of this document does not authorize or approve any omission or  
deviation from the requirement of the applicable State codes.



August 23, 2020



Precast Products

6707 E. Flamingo Ave. Bldg 300, Nampa, ID 83687  
901 N. Highway 77 Hillsboro, TX 76645  
362 Waverly Road Williamstown, WV 26187

PROJECT TITLE

**SANTIAGO**

**BUILDING NUMBER S-301**

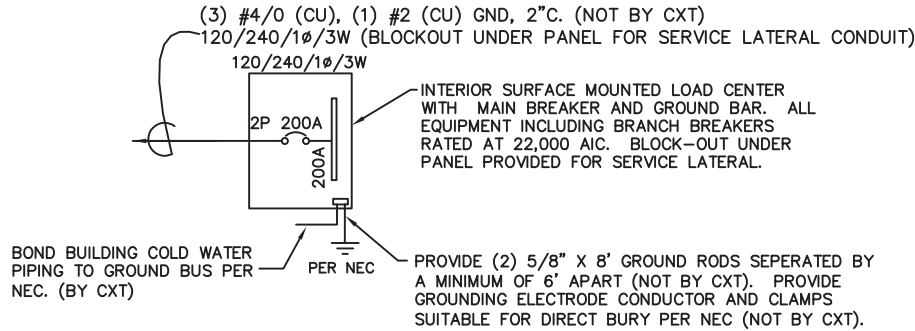
NOTE  
The information contained herein is proprietary  
and the exclusive property of CXT  
Incorporated. The information may only be  
used by the original recipient for the purpose  
intended. Reproduction or distribution of this  
information is strictly prohibited without the  
prior written consent of CXT Incorporated. By  
allowing use of this information, CXT  
Incorporated grants no warranty, express or  
implied, including a warranty of merchantability  
or of fitness for a particular purpose.  
CXT Incorporated


REV.	DESCRIPTION	APPROVAL	DATE
SCALE	3/16"=1'-0"	DATE	07-16-20
DRAWN	FMS	FILE NO.	S-301
CHECKED	FMS	PLOT	64

PLUMBING DETAILS, DIAGRAMS  
& SCHEDULES

DWG NO.	SHEET	REV.
<b>S-33</b>	33	
	37	





ONE-LINE POWER DIAGRAM  
NTS

GENERAL ELECTRICAL NOTES

- RECESSED JUNCTION BOXES FOR SINGLE DEVICES SHALL HAVE SINGLE GANG MUD RINGS CAST IN CONCRETE WALLS.
- ALL RECEPTACLES SHALL BE GFCI PROTECTED BY CIRCUIT BREAKERS, OR BY OTHER GFCI RECEPTACLES.
- ALL CONDUIT SHALL BE SIZED PER NEC. (SEE REF TABLE) EXPOSED CONDUIT SHALL BE EMT/FMC, RECESSED SHALL BE PVC.
- INSTALL ALL WIRING IN CONDUIT OR RELATED ENCLOSURES.
- ALL ELECTRICAL INSTALLATIONS SHALL MEET THE 2019 VERSION OF THE CALIFORNIA ELECTRICAL CODE.
- MINIMUM WIRE SIZE SHALL BE #12 AWG COPPER, THHN INSULATION UNLESS NOTED OTHERWISE.
- ROUTE ALL CONDUITS IN UTILITY ROOM AT CEILING OR FACE OF WALLS.
- ELECTRICAL DRAWINGS ARE DIAGRAMMATIC IN NATURE & MAY NOT SHOW EXACT LOCATIONS OF DEVICES. REFER TO WALL PANEL & OTHER DRAWINGS FOR EXACT LOCATIONS OF J-BOXES, ETC..
- CIRCUIT BREAKER LOCKOUT REQUIRED FOR EACH HAND DRYER.

PANEL SCHEDULE													
AMP 200			PANEL			TOTAL CONNECTED VA LOAD			7,276				
SURFACE MOUNT			120/240V, 1P, 3W			TOTAL CALCULATED VA LOAD			7,572				
CIRCUIT			LOAD			CIRCUIT			LOAD				
NO.	DESCRIPTION	OCP	TYPE	(VA)	(A)	PH	NO.	DESCRIPTION	OCP	TYPE	(VA)	(A)	
1	EXTERIOR LIGHTS	1P/20A	C	42	0.4	A	2	WOMENS LIGHTS / EXHAUST FAN	1P/20A	N	126	1.1	
3	CHASE LIGHTS	1P/20A	N	56	0.5	B	4	WOMENS RECEPTACLES	1P/20A	R	360	3.0	
5	MENS LIGHTS / EXHAUST FAN	1P/20A	N	126	1.1	A	6	WOMENS HAND DRYER #1	1P/20A	N	1,140	9.5	
7	MENS RECEPTACLES	1P/20A	R	360	3.0	B	8	WOMENS HAND DRYER #2	1P/20A	N	1,140	9.5	
9	MENS HAND DRYER #1	1P/20A	L	1,140	9.5	A	10	FAMILY R.R. LIGHTS & FAN	1P/20A	N	146	1.3	
11	MENS HAND DRYER #2	1P/20A	N	1,140	9.5	B	12	FAMILY R.R. RECEPTACLE	1P/20A	R	180	1.5	
13	CHASE RECEPTACLE	1P/20A	R	180	1.5	A	14	FAMILY R.R. HAND DRYER	1P/20A	N	1,140	9.5	
15						B	16						
17						A	18						
19						B	20						
21						A	22						
23						B	24						
25						A	26						
27						B	28						
29						A	30						
31						B	32						
33						A	34						
35						B	36						
37						A	38						
39						B	40						
NOTE: MAXIMUM ALLOWABLE AIC IS 22K AMPS, PANEL MODIFICATIONS WILL BE REQUIRED (NOT BY CXT) IF TRANSFORMER CAPACITY EXCEEDS 175 KVA.						LOAD			CONNECTED			CALCULATED	
						(C)ONTINUOUS			42 X 1.25			53 VA	
						(R)EC (1ST 10KVA)			1,080 X 1.00			1,080 VA	
						(N)ON-CONTINUOUS			5,014 X 1.00			5,014 VA	
						(L)ARGEST MOTOR			1,140 X 1.25			1,425 VA	
TOTAL LOAD						7,276 VA			7,572 VA			31.6 AMPS	

www.p-e-i.com  
**PROGRESSIVE ENGINEERING, INC.**  
58640 STATE ROAD 15  
GOSHEN, INDIANA 46528  
(574) 533-0337 - Phone  
(574) 533-9736 - Fax

STATE OF CALIFORNIA DESIGN APPROVAL AGENCY  
STATE OF CALIFORNIA APPROVED

This document is certified as being in conformance with  
California Health & Safety - Code Section 18028

PLAN APPROVAL NO.: PEI 20-4411  
APPROVED BY: IPH  
DATE APPROVED: 08/24/2020  
DATE OF EXPIRATION: 11/24/2021

Approval of this document does not authorize or approve any omission or deviation from the requirement of the applicable State codes.

EXHAUST FAN SCHEDULE							
SYM	MFR	MODEL #	CFM	SONES	VOLTS	AMPS	NTS.
EF-1	FANTECH	FG-6	305	6.0	120	0.58	1
EF-2	FANTECH	FG-4XL	173	6.0	120	0.75	1

NOTE 1. INLINE CENTRIFUGAL FAN, OCCUPANCY SENSOR CONTROLLED, PROVIDE DUCTING AND ROOF EXHAUST CAP.

LIGHTING FIXTURE SCHEDULE			
FIXTURE NUMBER	VOLTAGE	WATTS	DESCRIPTION
A	120	28	LUMINAIRE VPF84 INTERIOR LIGHT FIXTURE, VPF8-4-28W HP-4000K-120-CP-WHT-WET-OCC-TX/SD SURFACE MOUNTED, LED LAMP 4 FT, WRAP AROUND LENS, LOW TEMPERATURE DRIVER, BUILT IN OCCUPANCY SENSOR ACTIVATED W/ ADDITIONAL OCCUPANCY SENSOR FOR FAN CONTROL
B	120	14	SWOOP 610 LED EXTERIOR LIGHT, YWP610-14W HP-3500K-120-CP-BRZ-CAB/PC EXTERIOR, VANDAL RESISTANT, WALL MOUNTED, 14 WATT, CLEAR PRISMATIC LENS, BUILT IN PHOTOELECTRIC CONTROL
C	120	28	LUMINAIRE VPF84 INTERIOR LIGHT FIXTURE, VPF8-4-28W HP-4000K-120-CP-WHT-WET-OCC-TX/SD SURFACE MOUNTED, LED LAMP 4 FT, WRAP AROUND LENS, LOW TEMPERATURE DRIVER, BUILT IN OCCUPANCY SENSOR ACTIVATED W/ WALL SWITCH OVERRIDE

NOTE: THE SOURCE OF EFFICACY OF EXTERIOR LIGHTING IS TO BE A MINIMUM OF 45 LUMENS PER WATT.



August 23, 2020

**CXT**  
**Precast Products**  
6707 E. Flamingo Ave. Bldg 300, Nampa, ID 83687  
901 N. Highway 77 Hillsboro, TX 76645  
362 Waverly Road Williamstown, WV 26187

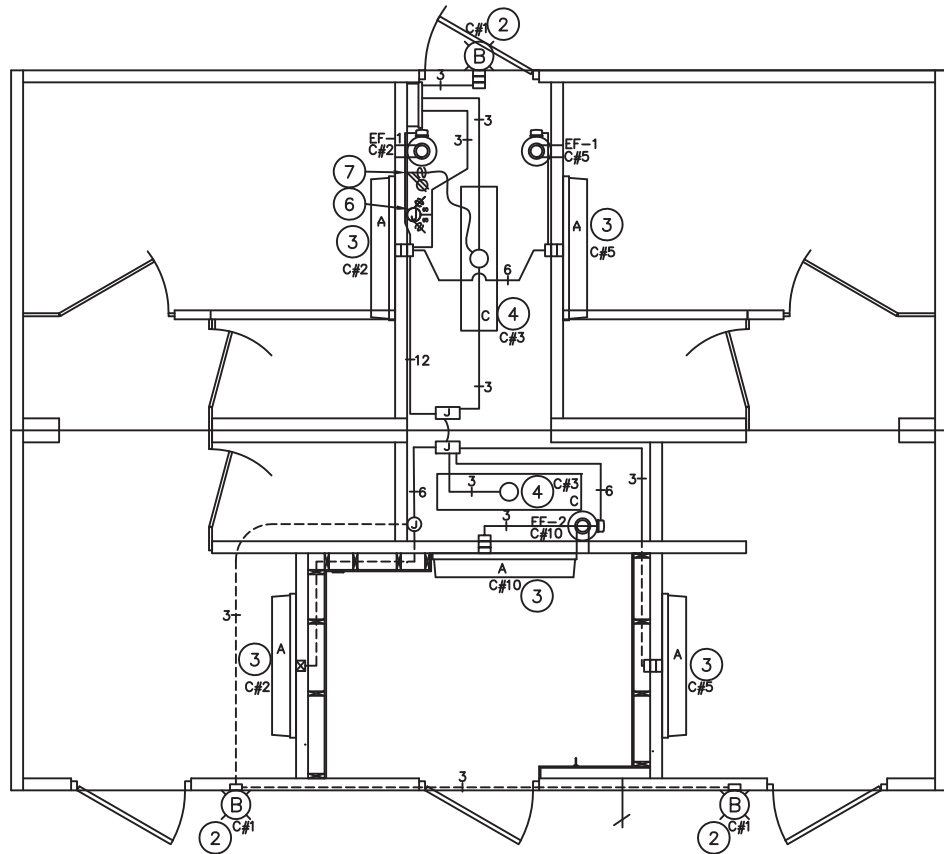
PROJECT TITLE  
**SANTIAGO**  
BUILDING NUMBER S-301

NOTICE  
The information contained herein is proprietary and the exclusive property of CXT Incorporated. The information may only be used by the original recipient for the purpose intended. Reproduction or distribution of this information is strictly prohibited without the prior written consent of CXT Incorporated. By allowing use of this information, CXT Incorporated grants no warranty, express or implied, including a warranty of merchantability or of fitness for a particular purpose.  
CXT Incorporated

REV.	DESCRIPTION	APPROVAL	DATE
SCALE	3/16"=1'-0"	DATE	07-16-20
DRAWN	FM5	FILE NO.	S-301
CHECKED	FM5	PLOT	64

ELECTRICAL SCHEDULES

DWG NO.	SHEET	REV.
S-34	34	
	37	



LIGHTING & EXHAUST FAN PLAN

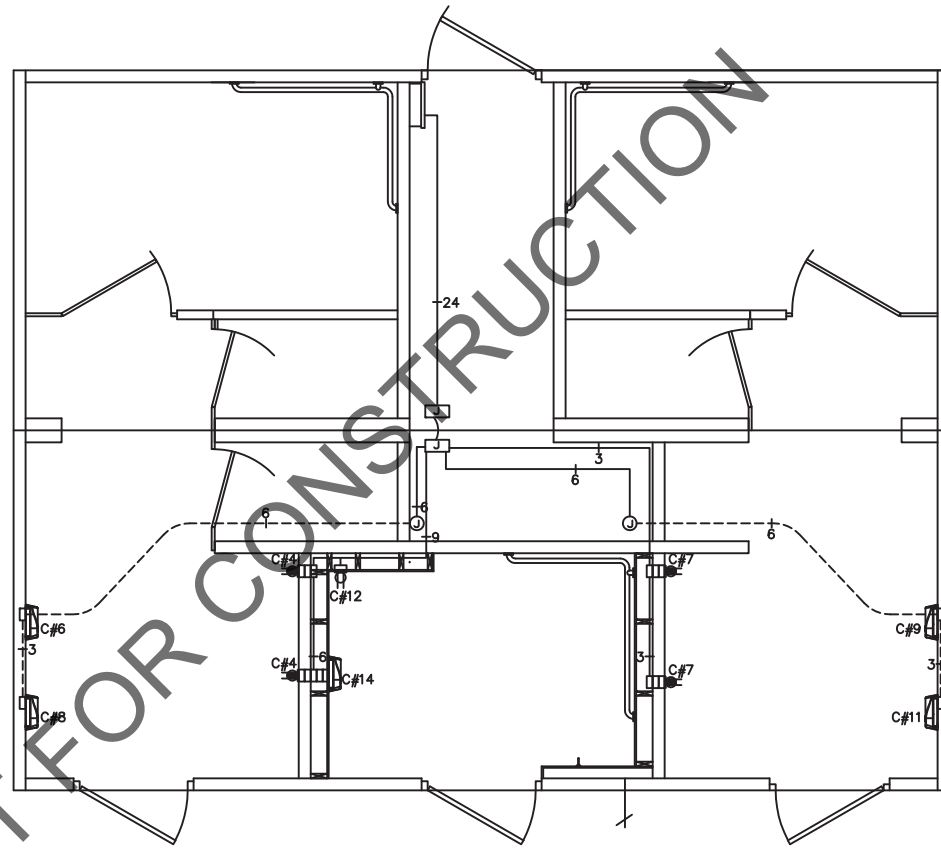
KEY NOTES

1. WIRE EF-1 THROUGH SPEED SWITCH AND OCCUPANCY SENSOR.
2. LIGHT FIXTURE TO BE CONTROLLED BY INTEGRAL PHOTOCELL.
3. RESTROOM LIGHTS TO OPERATE BY OCCUPANCY SENSOR.
4. LIGHT FIXTURE TO BE CONTROLLED BY OCCUPANCY SENSOR W/ WALL SWITCH OVERRIDE.
5. CIRCUIT AS NEEDED FOR THE LOAD OF THE EXHAUST FAN. EXHAUST FANS SHALL TURN ON VIA OCCUPANCY SENSOR. WIRE THROUGH SPEED SWITCH IN CONCESSION.
6. FAN SPEED CONTROLS, ONLY ONE SHOWN FOR CLARITY.
7. COMBD CHASE LIGHT SWITCH & CHASE OUTLET

- (X) NOTE REFERENCE
- (X) COMBINATION SWITCH AND DUPLEX RECEPTACLE
- (X) DUPLEX RECEPTACLE (X = BREAKER # IF SHOWN)
- (X) GFI DUPLEX RECEPTACLE (X = BREAKER # IF SHOWN)
- \$ ON / OFF SWITCH
- \$ S SPEED SWITCH
- J J JUNCTION BOX
- RECESSED JUNCTION BOX

- LOAD CENTER "A"
- WALL MOUNTED LED LIGHT FIXTURE
- CEILING MOUNTED LED LIGHT FIXTURE
- EXTERIOR LIGHT FIXTURE
- HAND DRYER
- WATER HEATER

- SAFETY DISCONNECT
- PANEL OR DEVICE AS NOTED
- THERMOSTAT
- HEATER
- CEILING FAN
- SURFACE MOUNTED CONDUIT, CROSSHATCH OR SLASH AND NUMBER DENOTES WIRES, (ALL #12AWG UNO, UNLESS NOTED) ONE WIRE TO BE GROUND
- CONCEALED CONDUIT
- ELECTRIC DOOR LOCK



HAND DRYER & RECEPTACLE PLAN



August 23, 2020



**Precast Products**

6707 E. Flamingo Ave. Bldg 300, Nampa, ID 83687  
901 N. Highway 77 Hillsboro, TX 76645  
362 Waverly Road Williamstown, WV 26187

PROJECT TITLE

**SANTIAGO**  
**BUILDING NUMBER S-301**

NOTICE  
The information contained herein is proprietary and the exclusive property of CXT Incorporated. The information may only be used by the original recipient for the purpose intended. Reproduction or distribution of this information is strictly prohibited without the prior written consent of CXT Incorporated. By allowing use of this information, CXT Incorporated grants no warranty, express or implied, including a warranty of merchantability or of fitness for a particular purpose.  
CXT Incorporated

REV.	DESCRIPTION	APPROVAL	DATE
SCALE	3/16"=1'-0"	DATE	07-16-20
DRAWN	FM5	FILE NO.	S-301
CHECKED	FM5	PLOT	64

**ELECTRICAL PLAN**

DWG NO.	SHEET	REV.
S-35	35	37

www.p-e-i.com  
**PROGRESSIVE ENGINEERING, INC.**  
58640 STATE ROAD 15  
GOSHEN, INDIANA 46528  
(574) 533-0337 - Phone  
(574) 533-9736 - Fax

STATE OF CALIFORNIA DESIGN APPROVAL AGENCY  
STATE OF CALIFORNIA APPROVED

This document is certified as being in conformance with  
California Health & Safety - Code Section 18028

PLAN APPROVAL NO.: **PEI 20-4411**  
APPROVED BY: **IPH**  
DATE APPROVED: **08/24/2020**  
DATE OF EXPIRATION: **11/24/2021**

Approval of this document does not authorize or approve any commission or deviation from the requirement of the applicable State codes.



