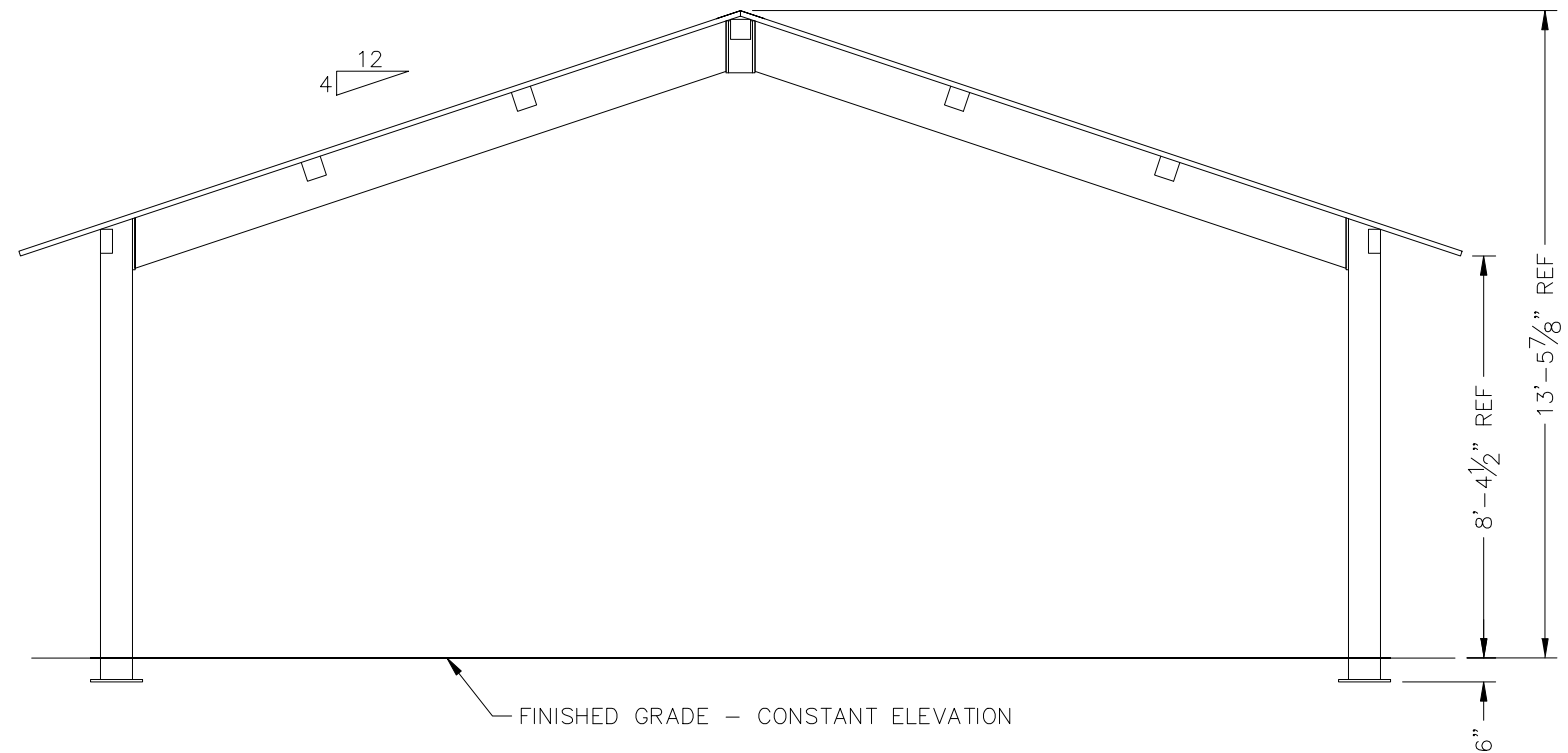


PRELIMINARY: NOT FOR
CONSTRUCTION

The following drawings are preliminary for bidding purposes only. Contractor shall not use these drawings for permit or construction purposes. A final set of stamped plans specifically for the restroom being fabricated for this project will be provided to the contractor at a later date.



ICON
Shelter Systems Inc
DISTINCTIVE STEEL SHELTERS
WWW.ICONSHelters.COM
COPYRIGHT 2004, ICON SHELTER
SYSTEMS, INC.
1455 LINCOLN AVE.
HOLLAND MI, 49423
616.396.0919
800.748.0985
616.396.0944 FX

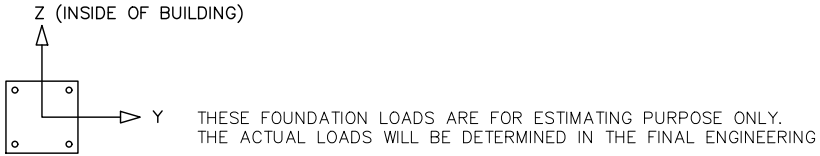
Elevation

| |
|-----------------|
| DRAWN BY: |
| ACP |
| DATE: |
| 9/5/2024 |
| PRELIMINARY ID: |
| 89130 |
| REVISION: |
| A |
| BUILDING TYPE: |
| RG30X50-8.4M- |
| PROJECT NAME: |

SHEET
1.0

Engineering\AcadStandard\Blocks\Titles\CONCRETE
QF-73-01-42

DWG: Shelters\RG\30X50\M-P4-20-90-150\Drawings\Preliminary\RG30X50-84M-P4-20-90-100~89130.DWG

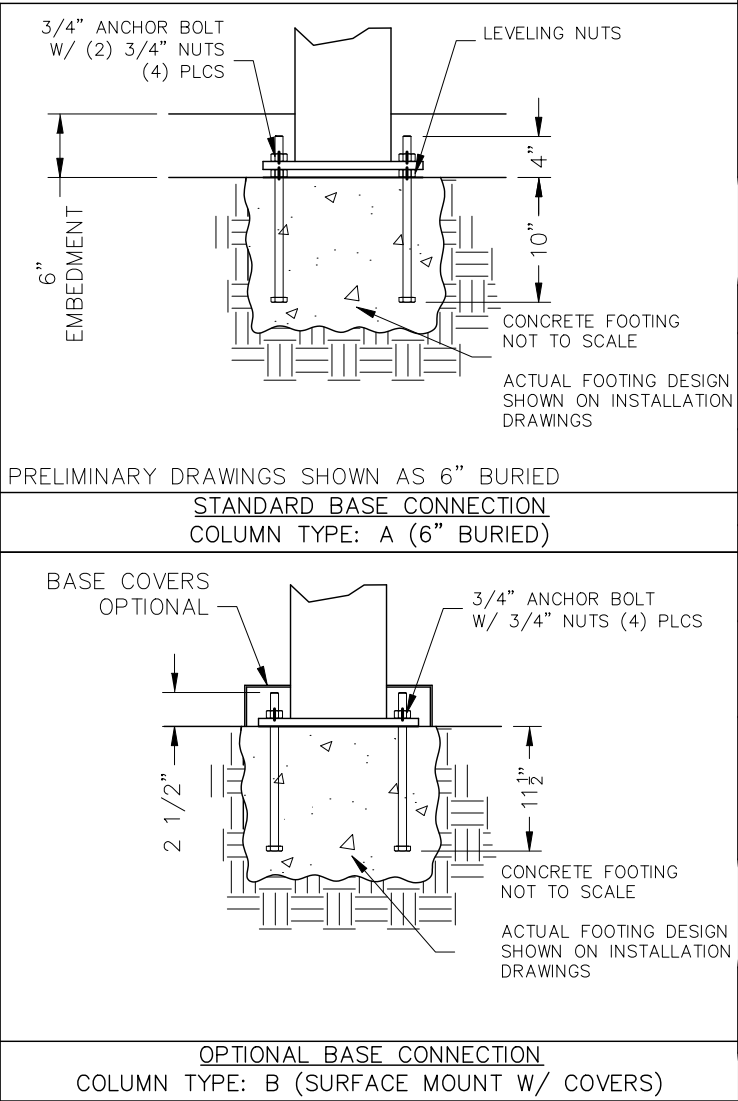
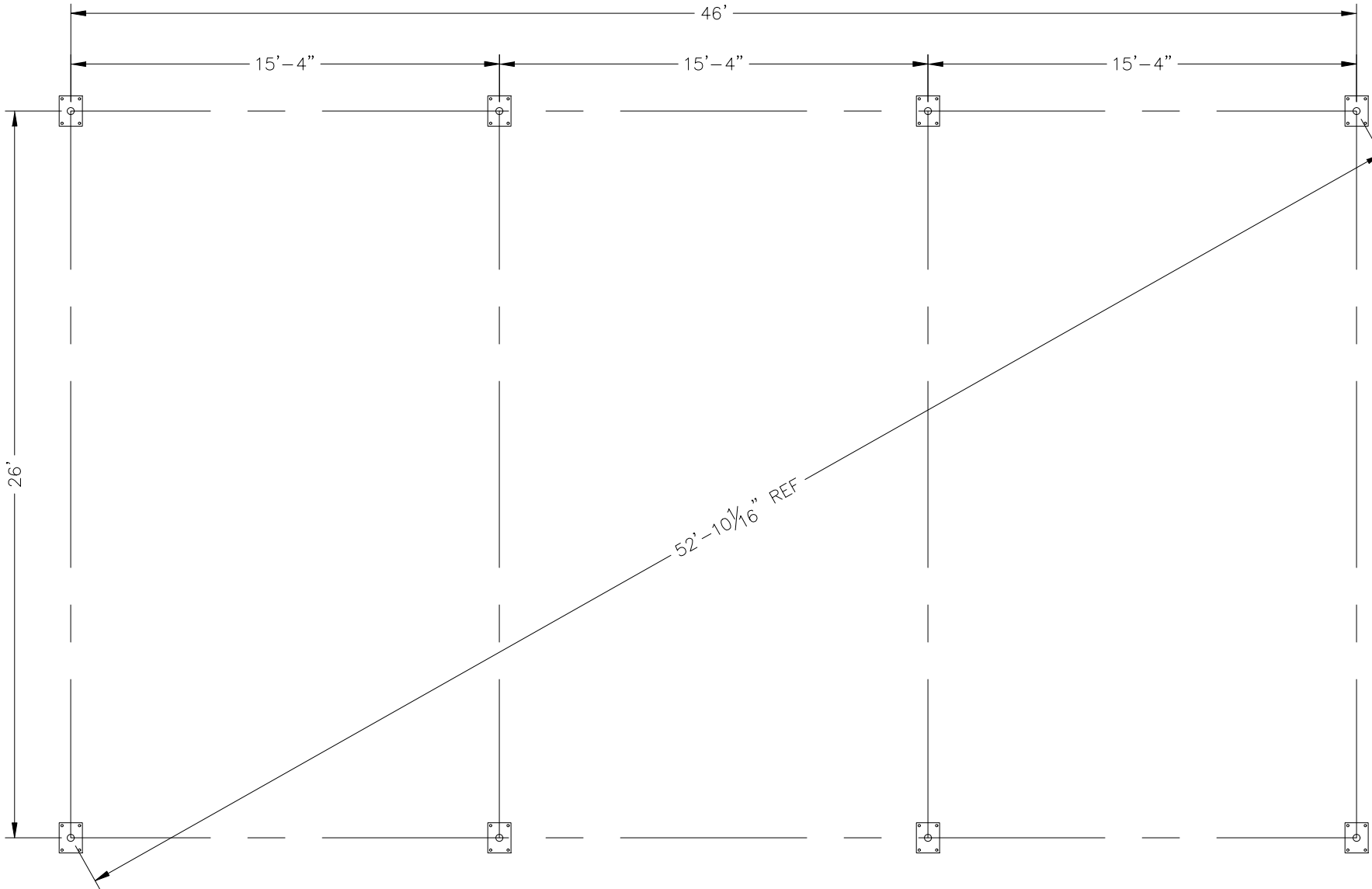


| LOADS TO FOUNDATION (KIPS, IN-KIPS) | FOUNDATION LOADS | | | | | CL1 |
|--|------------------|------------|------------|-------------|-------------|-----|
| | AXIAL (Fx) | SHEAR (Fy) | SHEAR (Fz) | MOMENT (My) | MOMENT (Mz) | |
| DL | 1.56 | 0.00 | 0.27 | -29.72 | 0.00 | |
| SL | 4.80 | 0.00 | 0.88 | -94.71 | 0.00 | |
| W-UPLIFT | -2.45 | 0.33 | -0.40 | 43.47 | 34.86 | |
| W-FY | -1.50 | -0.34 | -0.24 | 25.83 | -35.39 | |
| W-FZ | 0.38 | 0.00 | 0.87 | -93.66 | 0.00 | |
| E-FY | 0.18 | -1.09 | 0.06 | -6.90 | -118.65 | |
| E-Z | -0.18 | 0.00 | -1.31 | 141.75 | 0.00 | |

- NOTES:
- TABLE SHOWS UNFACTORED SERVICE LOADS
 - A FOUNDATION DESIGN HAS NOT BEEN PERFORMED BY ICON SHELTER SYSTEMS INC.
 - A LICENSED ENGINEER FAMILIAR WITH SOIL CONDITIONS AT CONSTRUCTION SITE MUST PERFORM A FOUNDATION DESIGN.
 - THE STRUCTURE HAS BEEN ENGINEERED AS AN OPEN STRUCTURE.
 - CONSULT ICON SHELTER SYSTEMS INC. IF THE STRUCTURE IS TO BE ENCLOSED.
 - COORDINATES ARE LOCAL TO THE COLUMN

DEFINITIONS:

DL = SERVICE LEVEL DEAD LOAD REACTION WITH THE GREATEST AXIAL LOAD
SL = SERVICE LEVEL SNOW LOAD REACTION WITH THE GREATEST AXIAL LOAD
W-UL = SERVICE LEVEL WIND LOAD REACTION WITH THE GREATEST UPLIFT LOAD
W-Y = SERVICE LEVEL WIND LOAD REACTION WITH THE GREATEST MAGNITUDE OF SHEAR IN THE LOCAL Y DIRECTION
W-Z = SERVICE LEVEL WIND LOAD REACTION WITH THE GREATEST SHEAR VALUE ACTING IN THE SAME DIRECTION AS THE DL SHEAR LOAD
E-Y = SERVICE LEVEL SEISMIC LOAD REACTION WITH THE GREATEST MAGNITUDE OF SHEAR IN THE LOCAL Y DIRECTION
E-Z = SERVICE LEVEL SEISMIC LOAD REACTION WITH THE GREATEST MAGNITUDE OF SHEAR IN THE LOCAL Z DIRECTION



PRELIMINARY: NOT FOR
CONSTRUCTION

ICON
Shelter Systems Inc
DISTINCTIVE STEEL SHELTERS
WWW.ICONSHelters.COM
COPYRIGHT 2004, ICON SHELTER
SYSTEMS, INC.

1455 LINCOLN AVE.
HOLLAND MI, 49423

616.396.0919
800.748.0985
616.396.0944 FX

Anchor Bolt Layout

DRAWN BY:

ACP

DATE:

9/5/2024

PRELIMINARY ID:

89130

REVISION:

A

BUILDING TYPE:

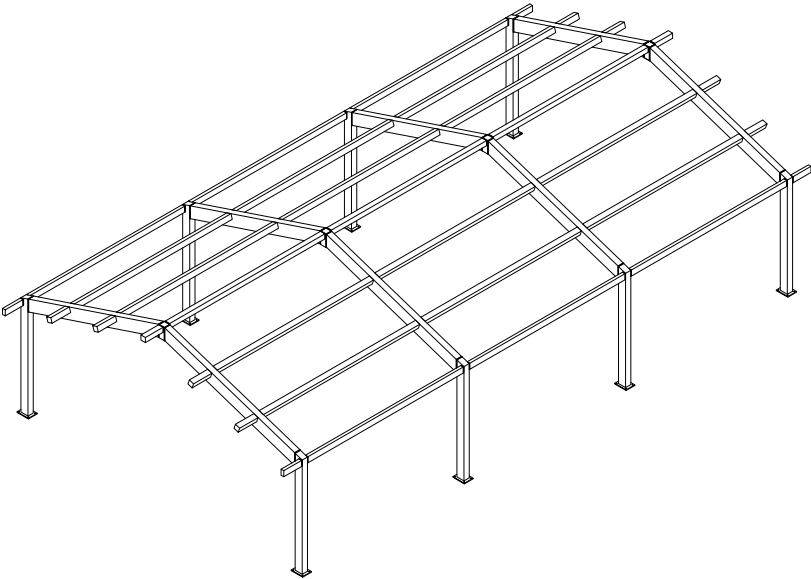
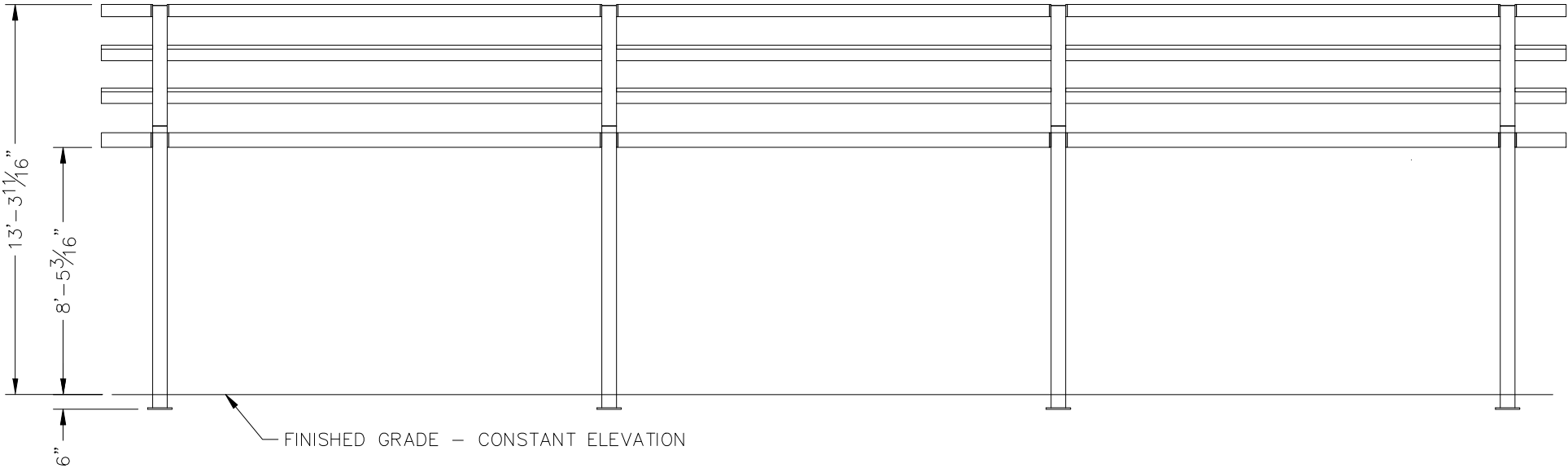
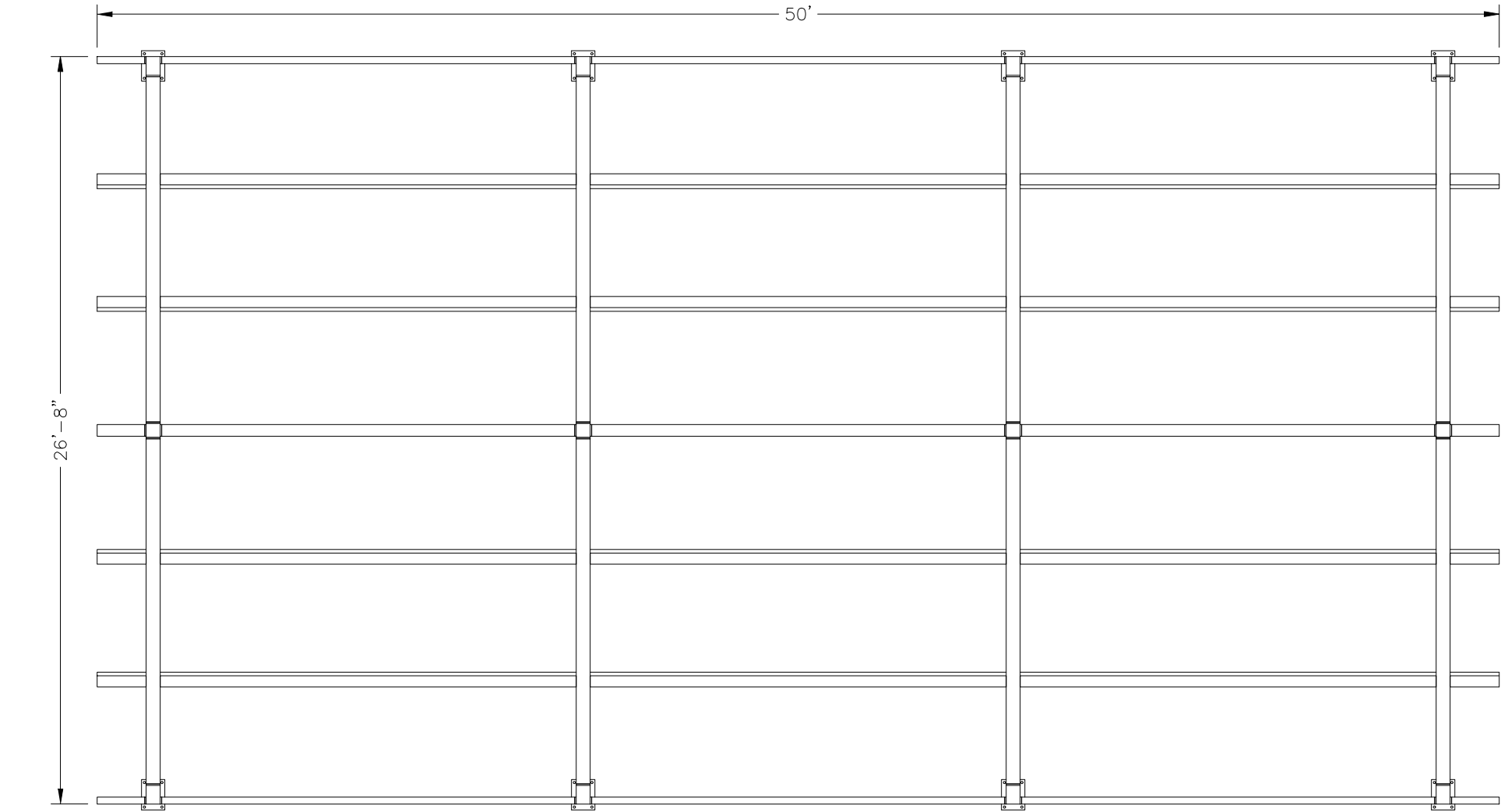
RG30X50-8.4M-

PROJECT NAME:

SHEET

2.0

Engineering\AcadStandard\Blocks\Titles\CONCRETE
QF-73-01-42



ALL STRUCTURAL COMPONENTS WILL BE:
TUBE: ASTM A500 GRADE B
PLATE: ASTM A36
BOLTS: ASTM A325
NUTS: ASTM A563
WELDING: GMAW

NOTE:
COLUMN SIZE: HSS 8x6x3/16

PRELIMINARY: NOT FOR
CONSTRUCTION

ICON

Shelter Systems Inc

DISTINCTIVE STEEL SHELTERS
WWW.ICONSHELTERS.COM

COPYRIGHT 2004, ICON SHELTER
SYSTEMS, INC.

1455 LINCOLN AVE.
HOLLAND MI. 49423

616.396.0919
800.748.0985
616.396.0944 FX

Frame

DRAWN BY:
ACP

DATE:
9/5/2024

PRELIMINARY ID:
89130

REVISION:
A

BUILDING TYPE:
RG30X50-8.4M-

PROJECT NAME:

SHEET

3.0

Engineering\AcadStandards\Blocks\Titles\ICONPRETIS
QF-73-01-42

DWG:Shelters\RG\30X50\M-P4-20-90-150\Drawings\Preliminary\RG30x50-84M-P4-20-90-100~89130.DWG

Roof Layout

DRAWN BY:

ACP

DATE:

9/5/2024

PRELIMINARY ID:

89130

REVISION:

A

BUILDING TYPE:

RG30X50-8.4M-

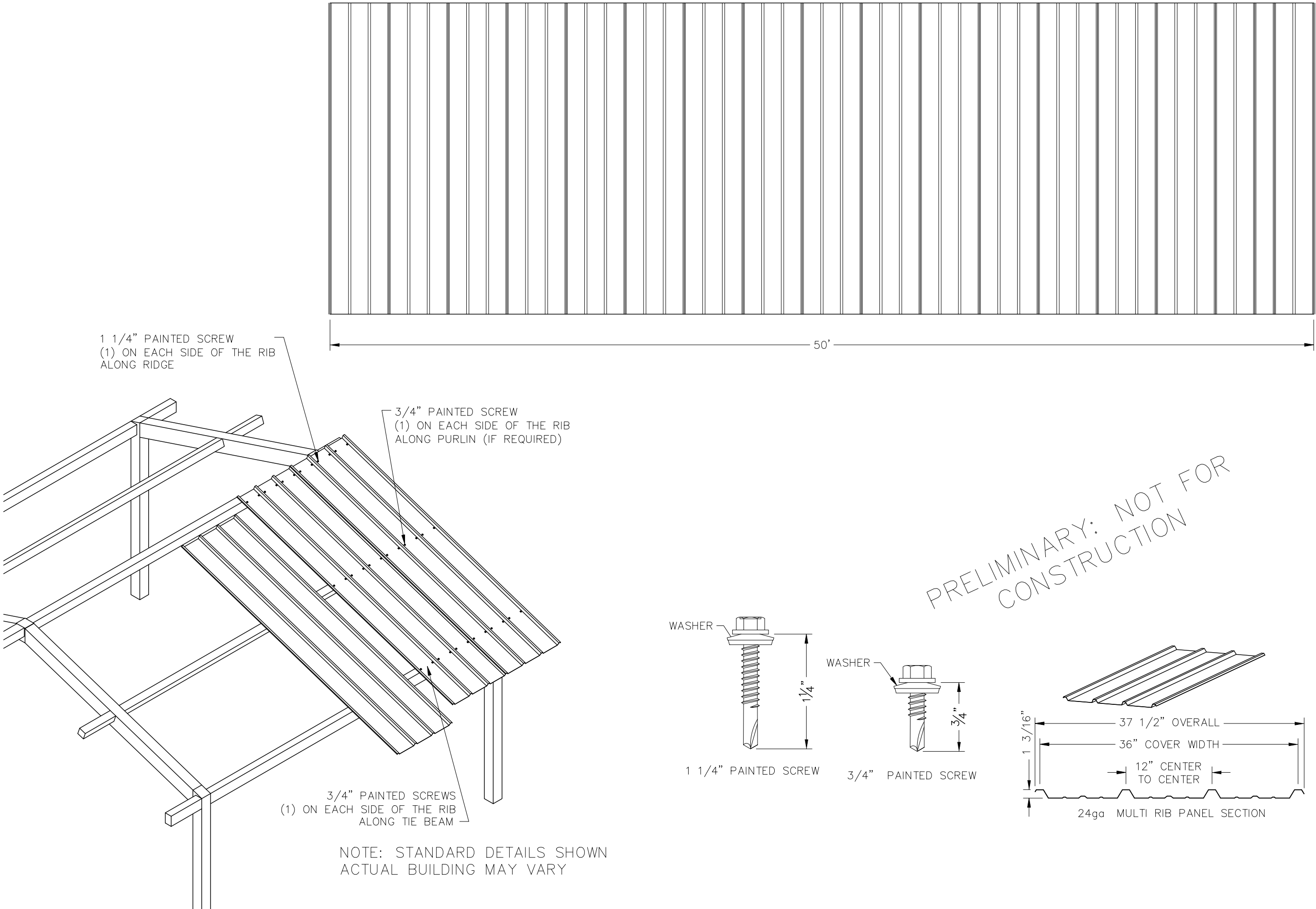
PROJECT NAME:

SHEET

4.0

Engineering\AcadStandard\Blocks\Titles\CONPRETB
QF-73-01-42

DWG:Shelters\RG\30X50\M-P4-20-90-150\Drawings\Preliminary\RG30x50-84M-P4-20-90-100~89130.DWG



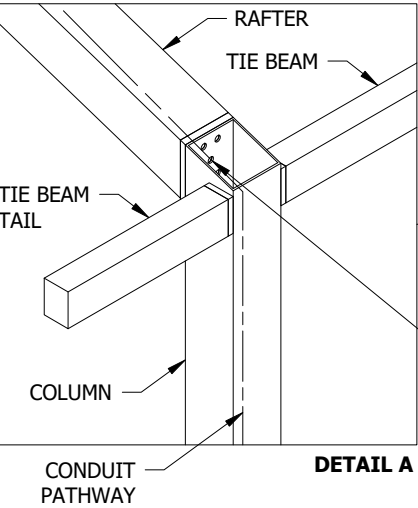
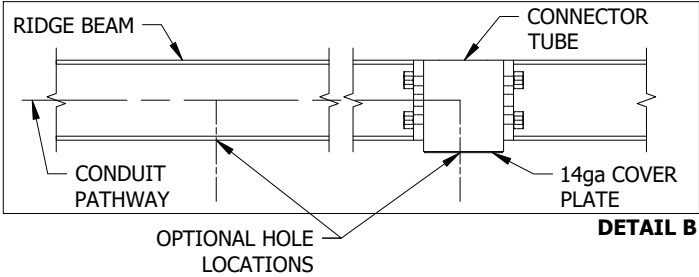
ELECTRICAL INFORMATION - RECTANGULAR GABLE

ICON'S STANDARD ELECTRICAL IS DESIGNED TO ACCOMMODATE Ø1/2" CONDUIT WITH A Ø3" INLET HOLE ON THE BOTTOM OF EACH COLUMN. THE CONDUIT PATHWAY RUNS THROUGH THE COLUMN, RAFTER, AND RIDGE BEAM THROUGH ALL BOLTED CONNECTIONS AS SHOWN. IF YOU HAVE SPECIAL ELECTRICAL REQUIREMENTS, PLEASE OUTLINE ANY CHANGES BELOW AS DESCRIBED.

PLEASE NOTE: DESIGN LIMITATIONS ON HOLE/CUTOUT SIZES MAY APPLY. ICON WILL REACH OUT TO DISCUSS ANY SUCH LIMITATIONS AS NEEDED.

NOTE: ICON SHELTER FRAME IS NOT UL LISTED TO ACT AS A CONDUIT FOR ELECTRICAL WIRING. CONSULT LOCAL BUILDING CODES WHEN PLANNING YOUR ELECTRICAL SYSTEM.

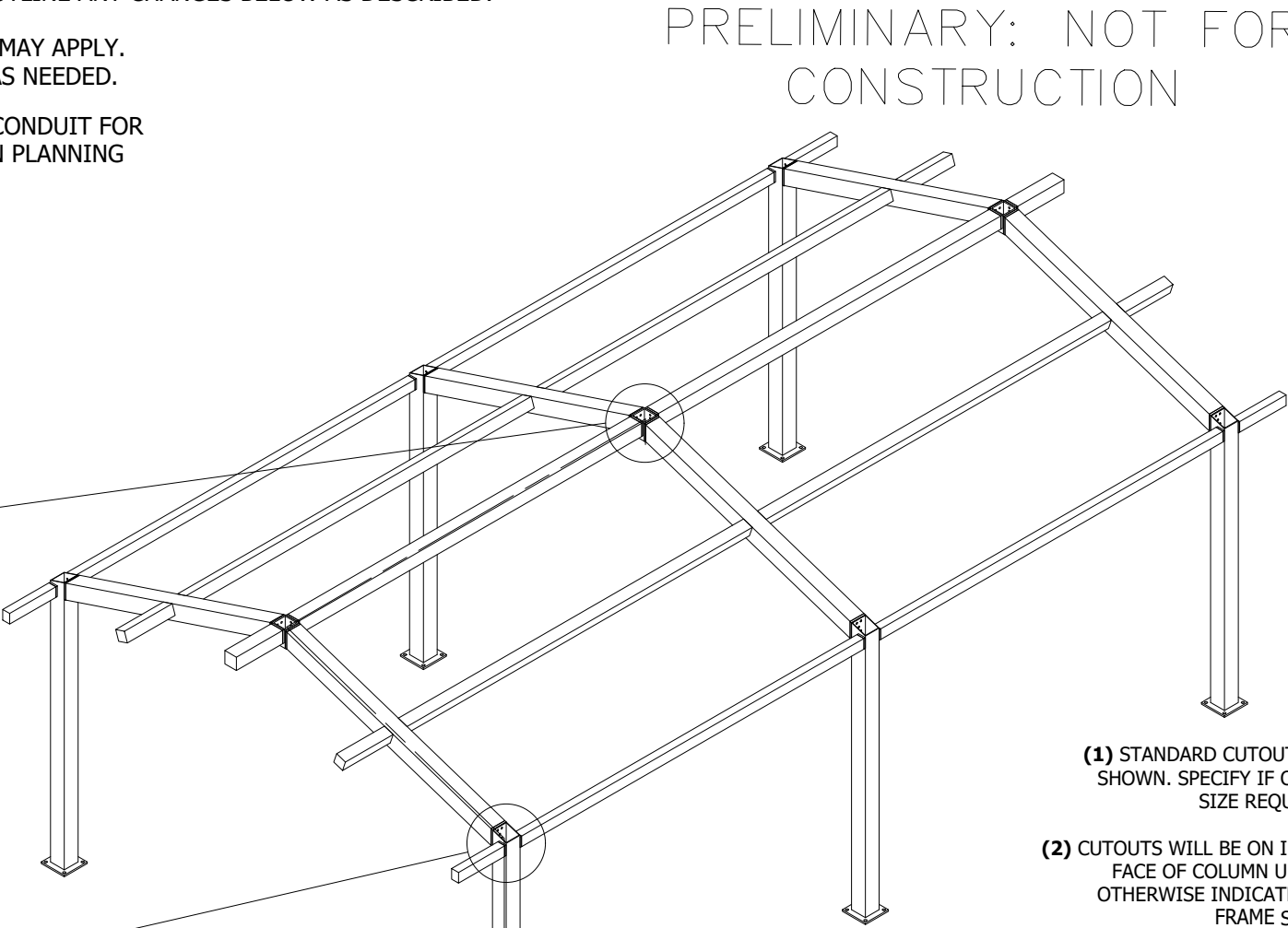
OPTIONAL EXIT HOLES
IF REQUIRED, EXIT HOLES FOR LIGHTING, ETC. CAN BE PLACED IN THE RIDGE BEAM AND/OR CONNECTOR TUBE WITH 14ga COVER PLATE AS SHOWN (CHARGES APPLY) USE FRAME SHEET OF THIS PRELIMINARY TO SPECIFY REQUIRED EXIT HOLE LOCATIONS AND SIZE.



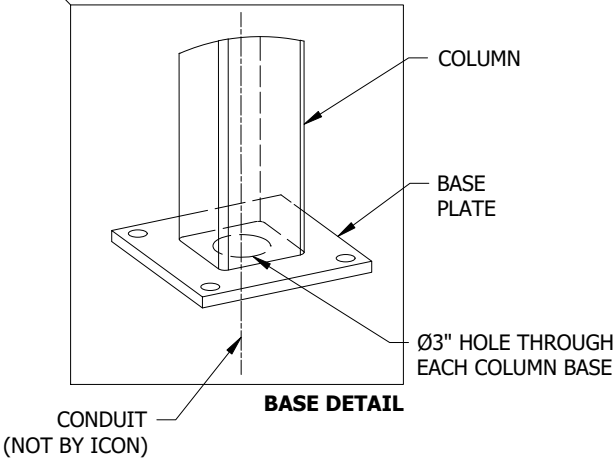
ICON PROVIDES A MINIMUM OF (1) 3/4" HOLE AT EACH CONNECTION FOR 1/2" CONDUIT. IF APPLICABLE, PLEASE SPECIFY REQUIRED CONDUIT SIZE: (CHARGES APPLY)

- ☐ 3/4" CONDUIT (1" HOLES)
- ☐ 1" CONDUIT (1 1/4" HOLES)
- ☐ OTHER (PLEASE SPECIFY)

NOTE: BUILDING DEPICTED ON THIS SHEET FOR ILLUSTRATION PURPOSES ONLY. ACTUAL LAYOUT AND FRAME MEMBER QUANTITIES VARY BY DESIGN. PLEASE REFER TO ELEVATION AND FRAME SHEETS IN THIS PRELIMINARY FOR ORDER-SPECIFIC CONFIGURATION.

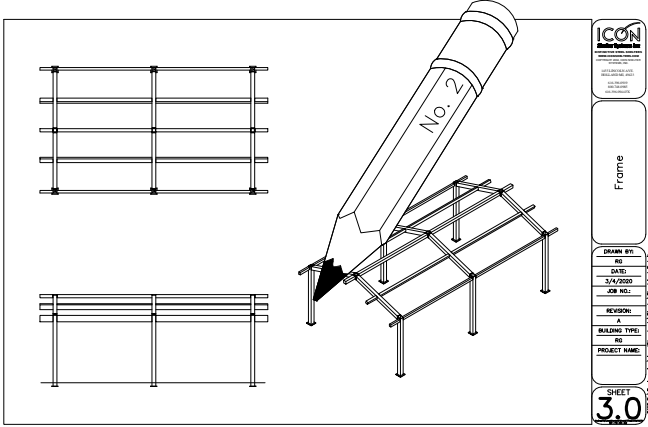


CONDUIT PATHWAY PROVIDED FOR EACH COLUMN.



- STEPS:**
1. CONDUIT HOLE SIZE (DETAIL A)
 2. ELECTRICAL EXIT HOLES (DETAIL B)
 3. ELECTRICAL ACCESS & COVER PLATES (DETAIL C)
 4. ELECTRICAL CONDUIT PATHWAY (DETAIL D)

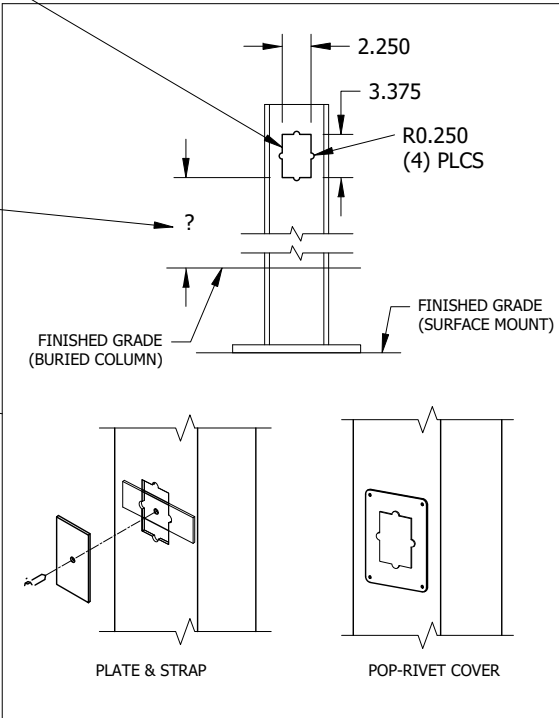
IF REQUIRED, PLEASE DRAW THE NECESSARY ELECTRICAL CONDUIT PATHWAY ON THE FRAME SHEET OF THIS PRELIMINARY.



DETAIL D

- (1) STANDARD CUTOUT SIZE SHOWN. SPECIFY IF OTHER SIZE REQUIRED.
- (2) CUTOUTS WILL BE ON INSIDE FACE OF COLUMN UNLESS OTHERWISE INDICATED ON FRAME SHEET.
- (3) SPECIFY HEIGHT ABOVE FINISHED GRADE FOR EACH CUTOUT AS SHOWN

OPTIONAL CUTOUTS
USE FRAME SHEET OF THIS PRELIMINARY TO SPECIFY REQUIRED CUTOUT LOCATIONS (CHARGES APPLY) SEE REQUIRED INFO BELOW



DETAIL C

- (4) COVER PLATES PROVIDED UPON REQUEST (CHARGES APPLY)
PLEASE SPECIFY TYPE AND QUANTITY REQUIRED:
- ☐ PLATE & STRAP
 - ☐ POP-RIVET COVER PLATE
- HOW MANY REQUIRED? _____

ICON
Shelter Systems Inc
DISTINCTIVE STEEL SHELTERS
WWW.ICONSHelters.COM
COPYRIGHT 2004, ICON SHELTER SYSTEMS, INC.
1455 LINCOLN AVE.
HOLLAND MI, 49423
616.396.0919
800.748.0985
616.396.0944 FX

Electrical

DRAWN BY: ACP
DATE: 9/5/2024
PRELIMINARY ID: 89130
REVISION: A
BUILDING TYPE: RG30X50-8.4M-
PROJECT NAME:

SHEET
5.0