

Design-Build Outreach Event

April 4, 2024 11AM



Department of Public Works and Planning

Event Agenda



Welcome



Design-Build in the County of Fresno



Upcoming Design-Build Projects



Q&A – Open Discussion



Closing Remarks



Welcome!



History of Design-Build in Fresno County

- 2001 – AB 598 Design-Build introduced to California for \$10 mil transit projects
- 2006 – Cities allowed to use Design-Build procurement
- 2015 – Counties allowed to use for \$1 mil + projects for select project types pending Board of Supervisor adoption and approval
- 2023 – February – The Fresno County Board of Supervisors adopted and approved the Design-Build Method of Procurement for Eligible Public Works Projects



What kinds of projects can Design-Build be used for?

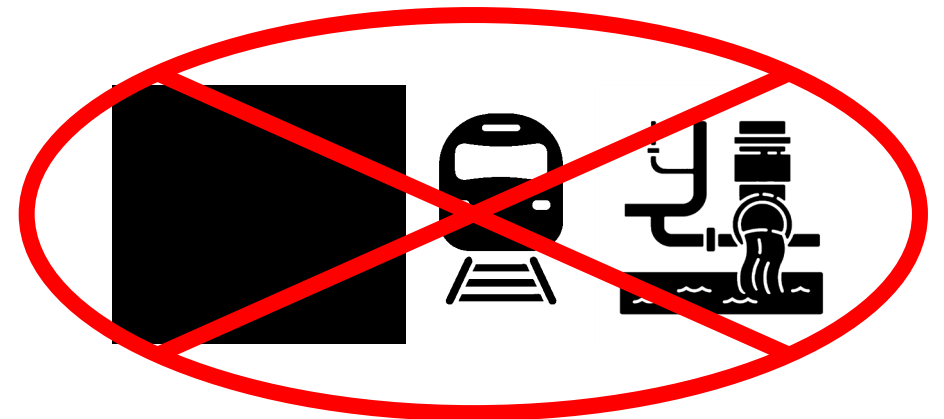
- **Design-Build may be used for:**

- Buildings
- County sanitation wastewater treatment facilities
- Park and recreation facilities



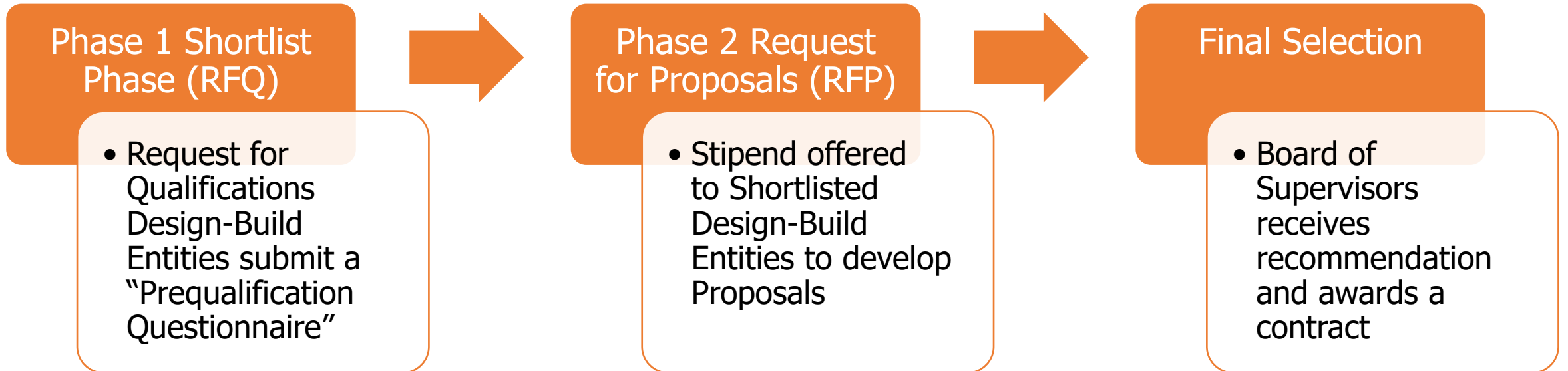
- **Design-Build may not be used for:**

- Streets and highways
- Public rail transit
- Water resources and infrastructure





Design-Build Entity Selection





Design-Build in Fresno County

- **Reedley Library**

- RFQ (PWP23-035) – May 2023, Six firms submitted prequalification questionnaires
- RFP (23-DB-01) – October 2023, Three firms withdrew
- RFP Withdrawn – December 2023, Substantial changes to scope

- **Department of Behavioral Health Olive Ave. Campus Remodel**

- RFQ (PWP23-061) – July 2023, Seven firms submitted prequalification questionnaires
- RFP (23-DB-02) – November 2023, Two firms withdrew
- RFP Withdrawn – January 2024, Emergency repairs, substantial changes to scope, planned for procurement through traditional design-bid-build



Upcoming Design-Build Projects

- The Two Libraries Project (Clovis & Reedley)
- Agricultural and Cooperative Extension Building



The Two Libraries Project (Clovis & Reedley)

- **Clovis Regional Library**

- Design and construct a 26,500 sq. ft. single-story library building.
- An extensive indoor-outdoor community room to accommodate up to 146 individuals. Two large plazas, one on the south-facing Senior Activity and Transit Center and the other connecting the Clovis Trail, two arbors for outdoor reading, a children's gardening area, and two accessible parking stalls.

- **Reedley Library**

- Design and construct a 14,000 sq. ft. single-story library building and develop the site.
- Includes separate areas for children and teenagers, a quiet room, a public meeting room with 47 seats, and an innovation center to facilitate creativity.

Clovis Regional Library



The design concept drew inspiration from Clovis's rich history while ensuring it sufficiently complements the neighboring structures.

Clovis Regional Library



Clovis Regional Library



Clovis Regional Library

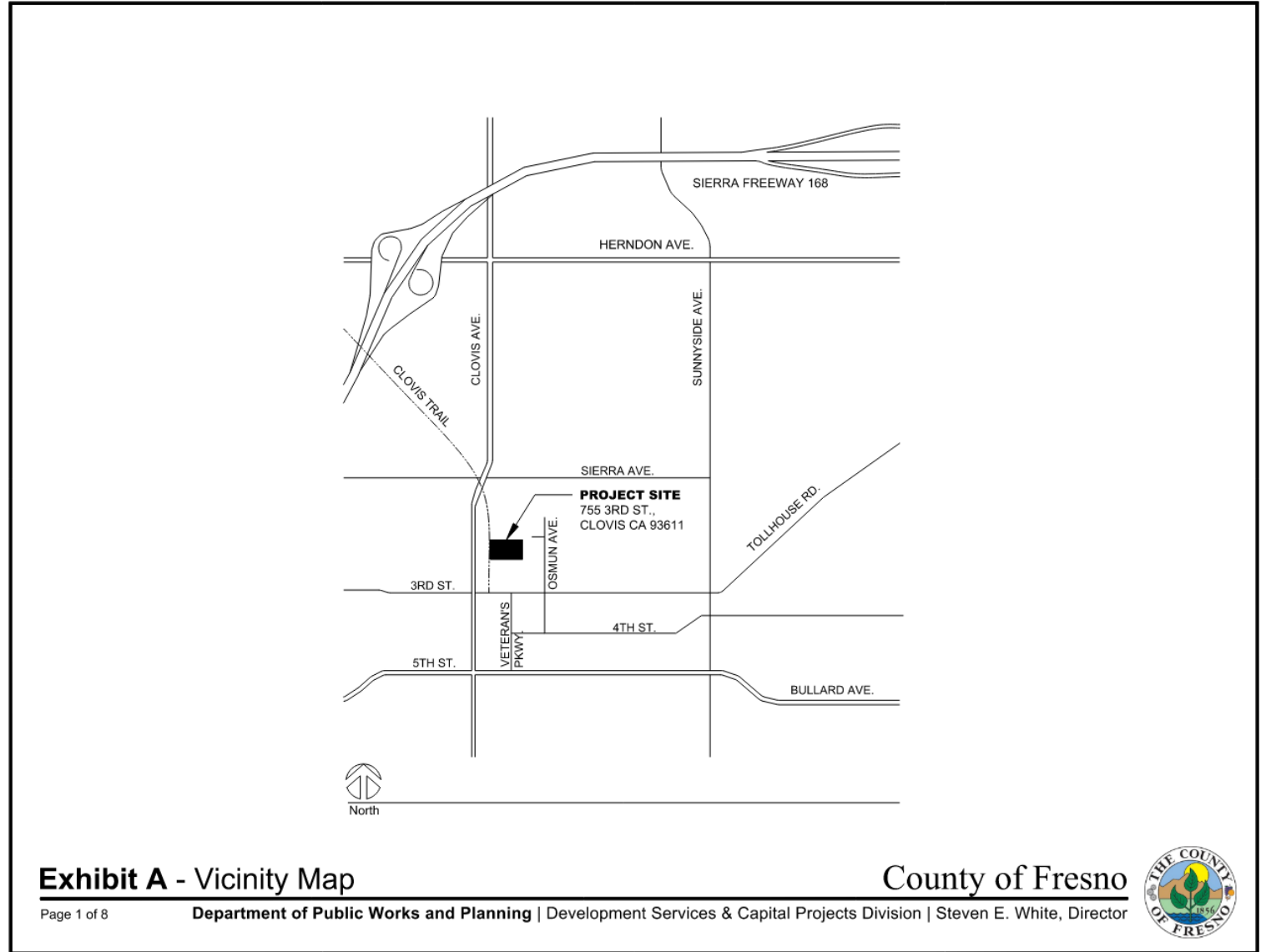
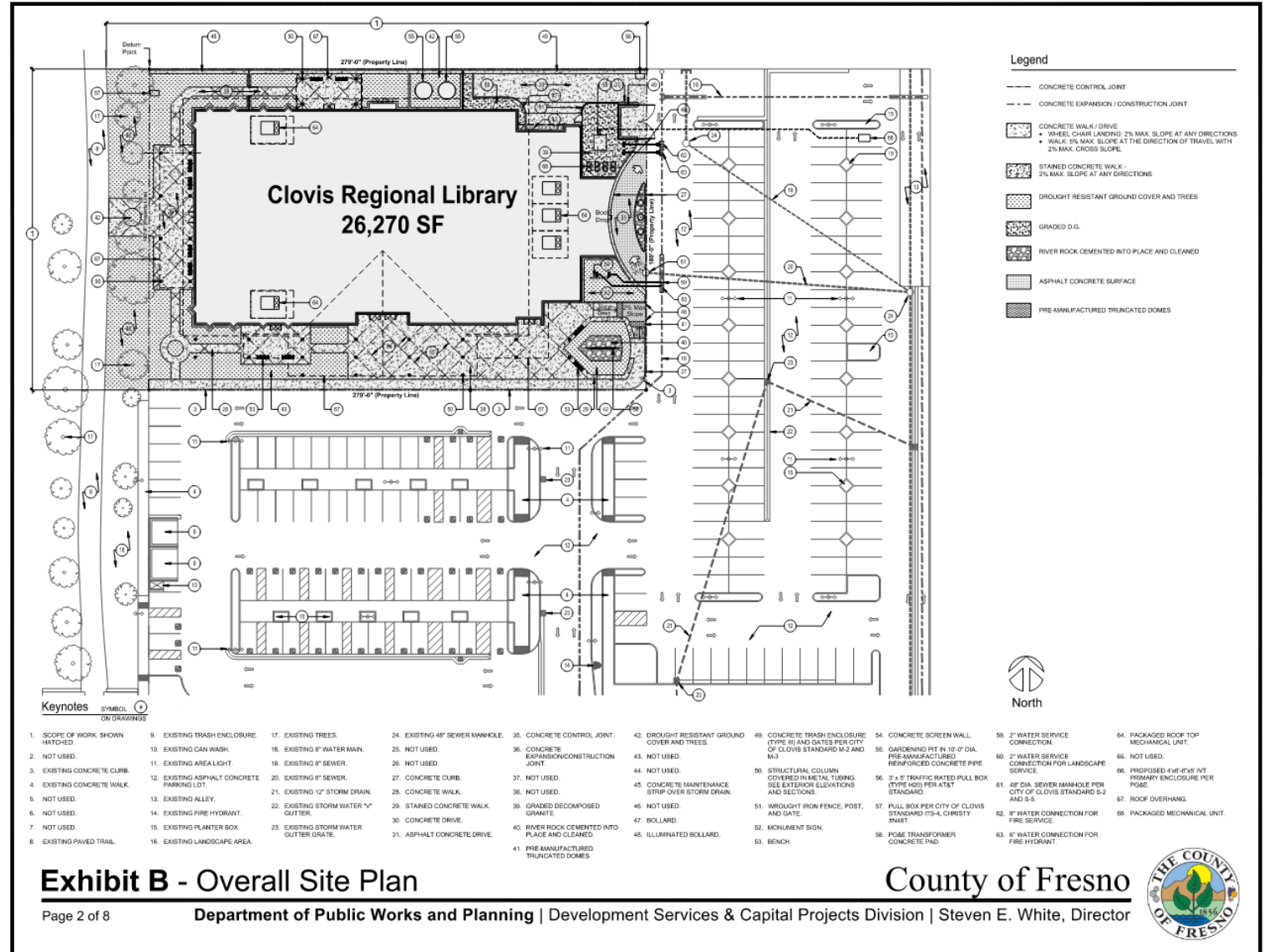


Exhibit A - Vicinity Map

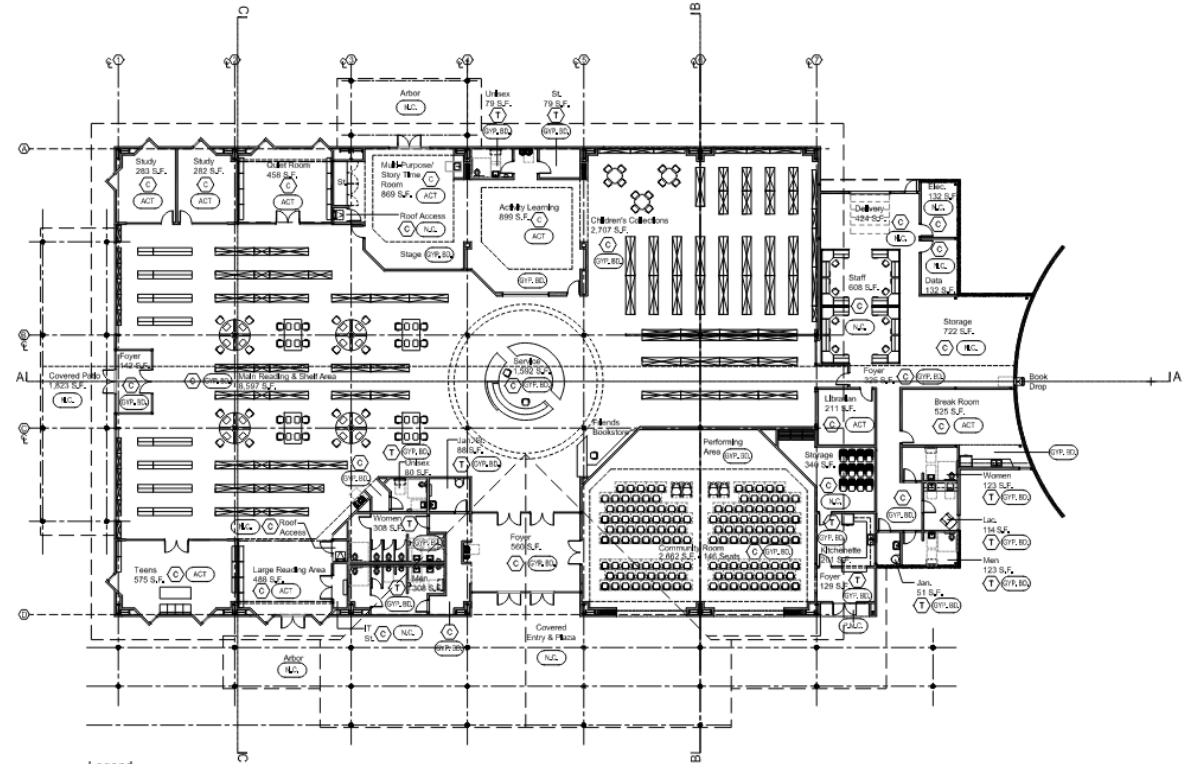
County of Fresno



Clovis Regional Library



Clovis Regional Library



Legend

- (C) DIAMOND POLISHED CONCRETE FINISH
- (T) QUARRY TILE FLOORING WITH COLORED EPOXY GROUT
- (GYP, BD) GYP. BOARD CEILING OVER METAL JOIST, PAINT
- (ACT) SUSPENDED ACOUSTICAL TILE CEILING SYSTEM
- (PWC) PRE-FINISHED PERFORATED (MAX. HOLE SIZE 1/8" DIA) METAL SOFFIT PANEL, "DAGGLAD ARCHITECTURAL METAL" OR EQUAL
- (C.P.S.) 3/4" EXTERIOR CEMENT PLASTER SOFFIT
- (N.C.) NO CEILING, BARE STRUCTURE



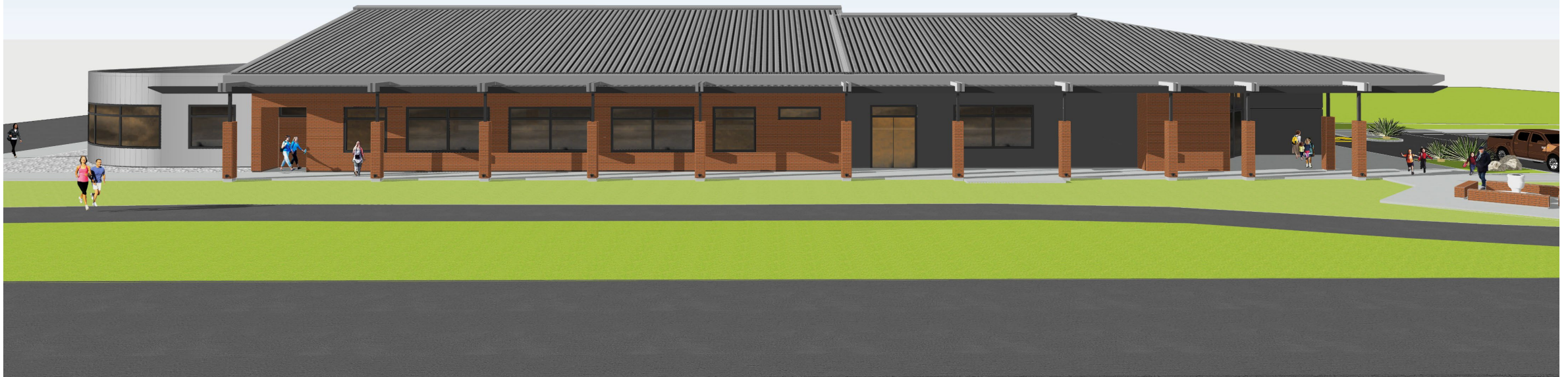
Exhibit F - Finish Floor Plan

County of Fresno



Reedley Library

To maintain the neighborhood's contextual integrity, the structure has been thoughtfully designed to incorporate a blend of face brick and insulated metal panel cladding, complemented by insulated metal panel roofing.



Reedley Library



Reedley Library

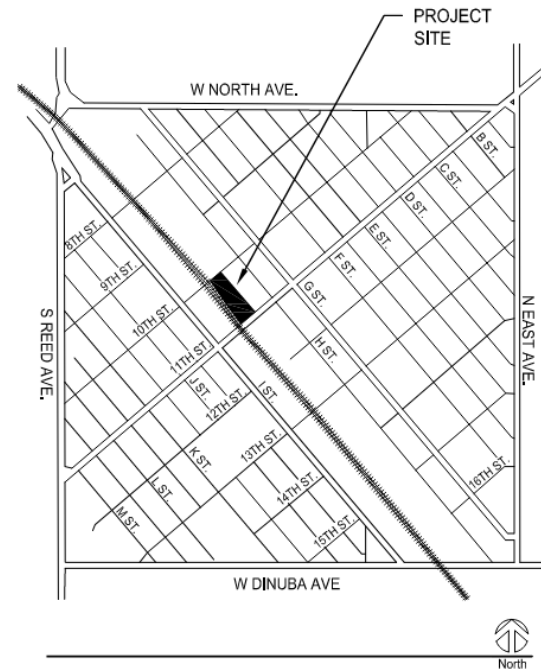


Exhibit - A [Vicinity Map]



Reedley Library

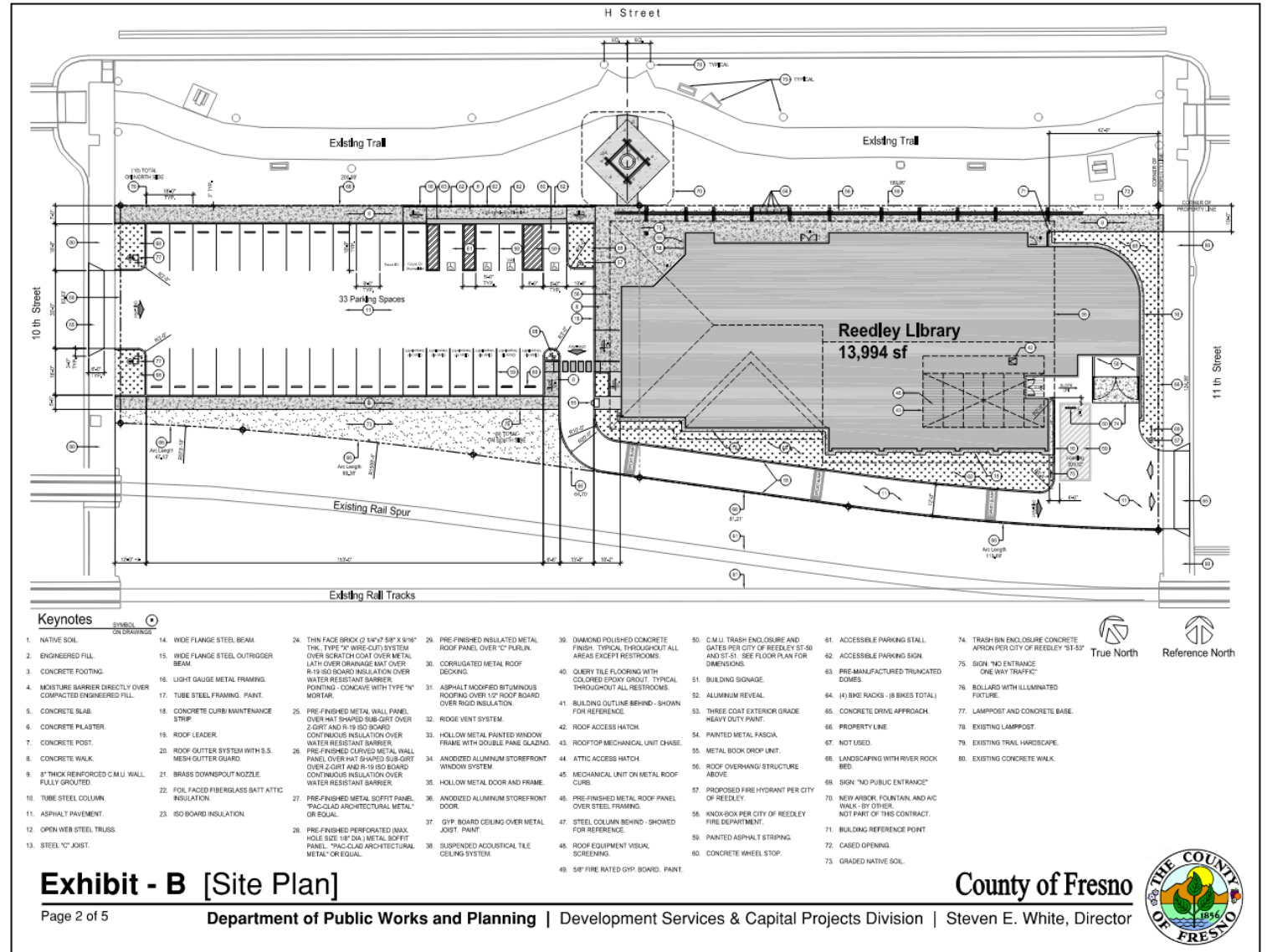
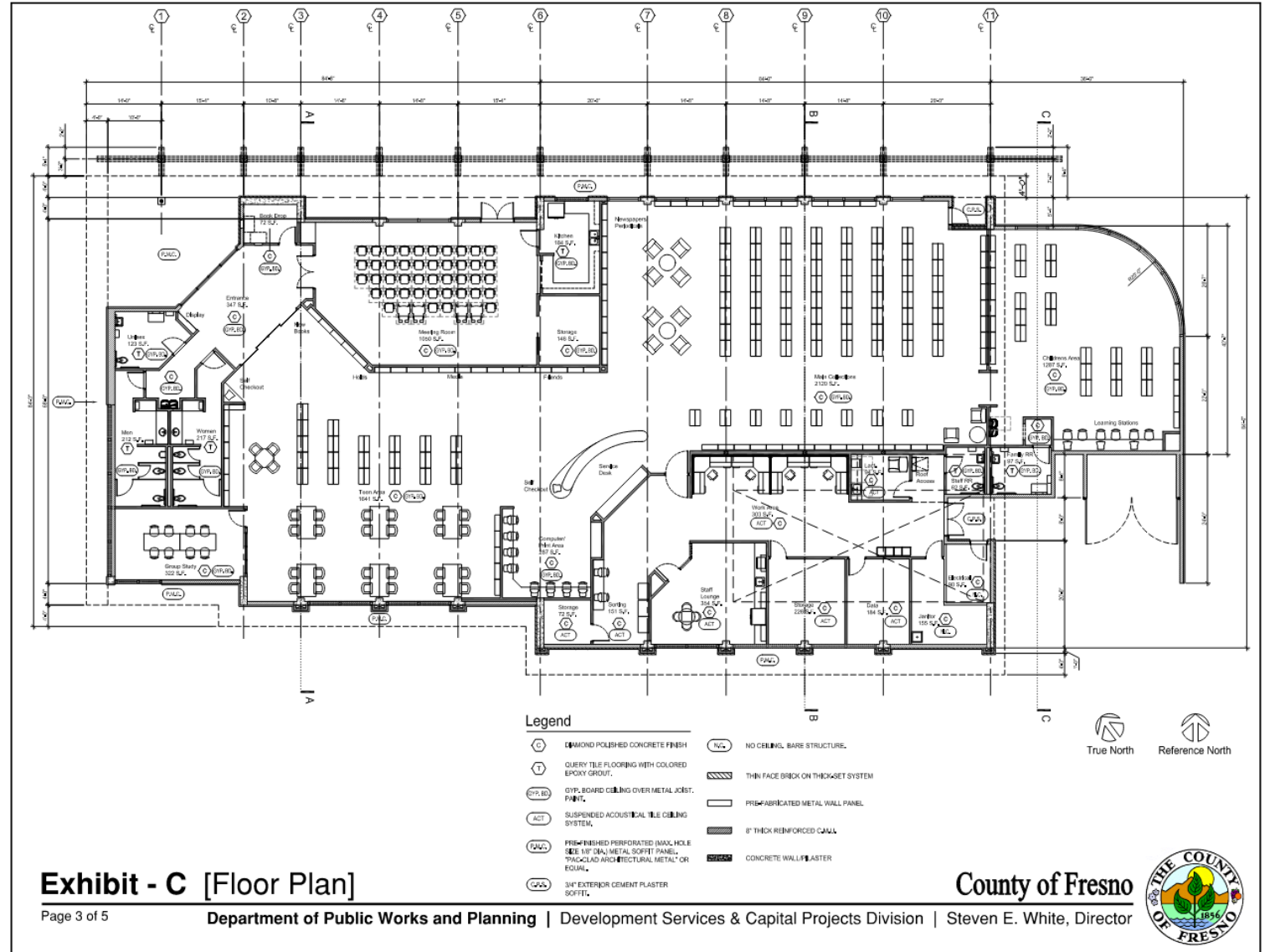


Exhibit - B [Site Plan]

County of Fresno



Reedley Library



Reedley Library

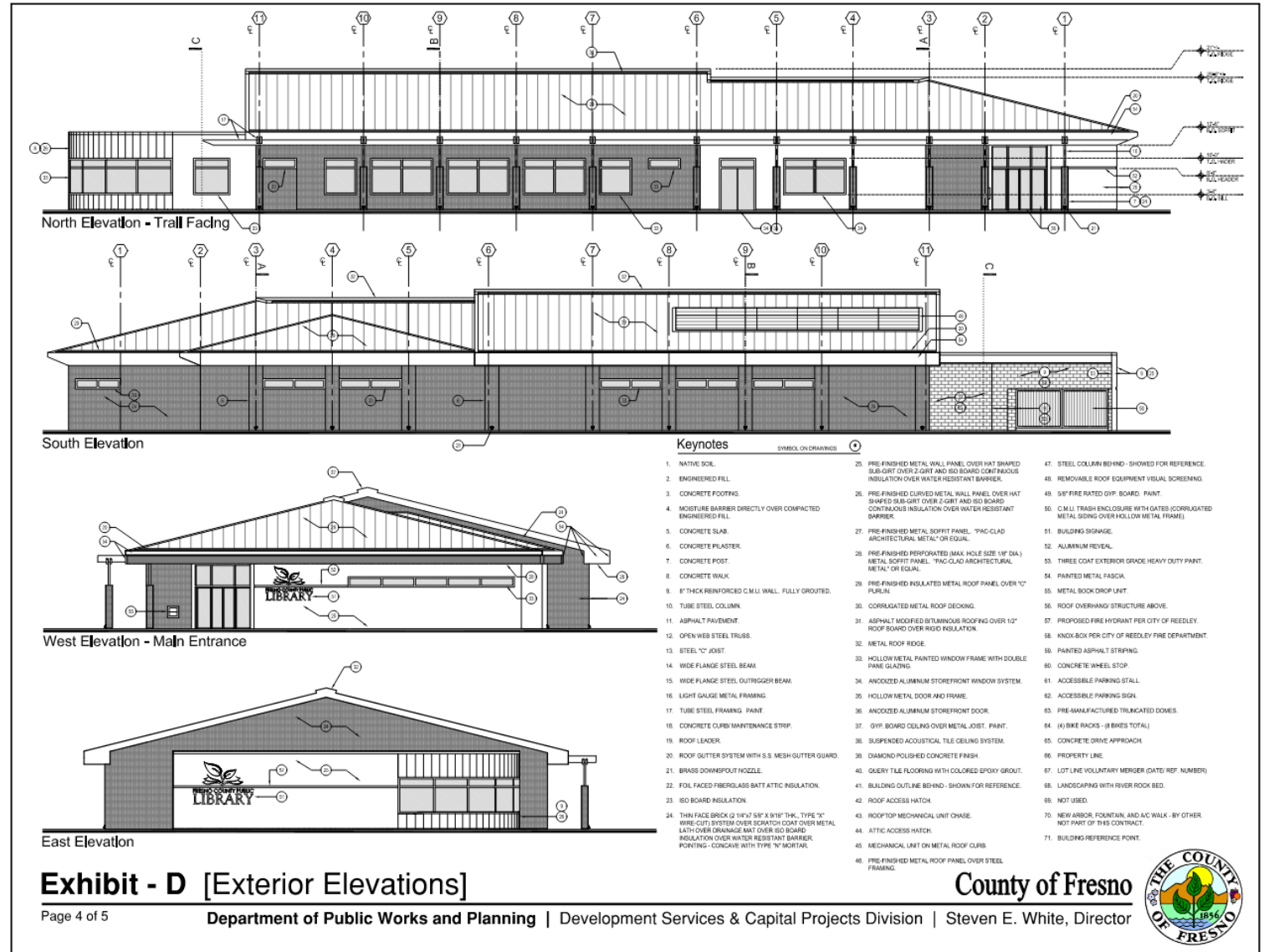


Exhibit - D [Exterior Elevations]





Agricultural Commissioner and UC Cooperative Extension Building

Design and construction of a new 68,000 sq. ft. mixed-use main office building, a 12,000 sq. ft. auxiliary services building, and related site work and amenities on an approximately 540,700 sq. ft. (12.41 acres) vacant County-owned site.

- Main office building will include offices, public and staff conference rooms, research labs, commercial and demonstration kitchens, and storage for approximately 100 employees to be shared between the Agricultural Commissioner and the UC Cooperative Extension.
- Auxiliary services building will include equipment and supply storage, bait silos and mixing areas, workshops with locker rooms and showers, additional research labs, and will be used to store hazardous materials including but not limited to herbicides, rodenticides, insecticides, etc.
- Site will include guest parking, shared employee parking, secure fleet parking, a vehicle scale and meter certification area, a walking path, and a memorial garden and barbeque area near the main building.

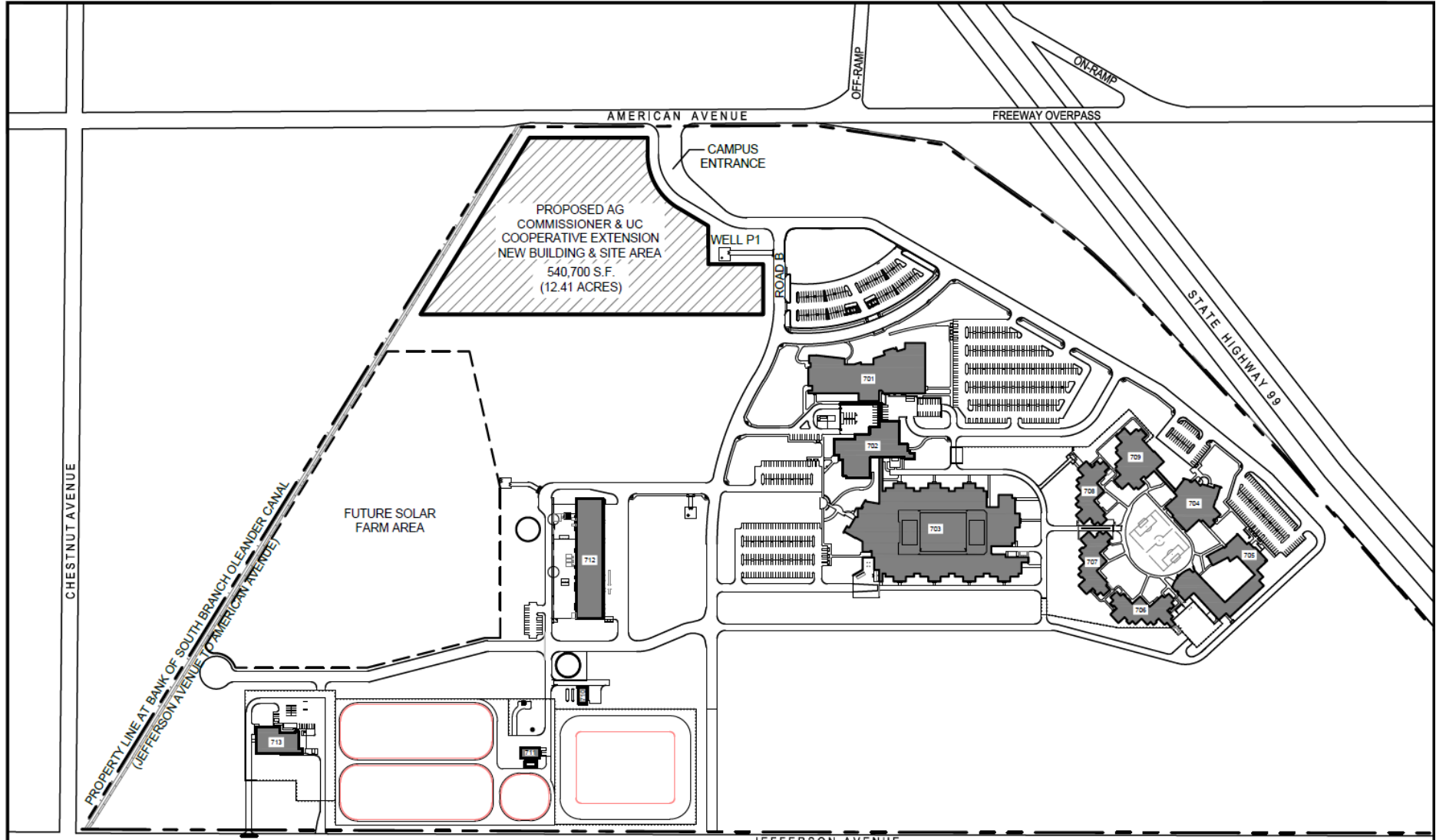


Exhibit B - Overall Site Plan

County of Fresno



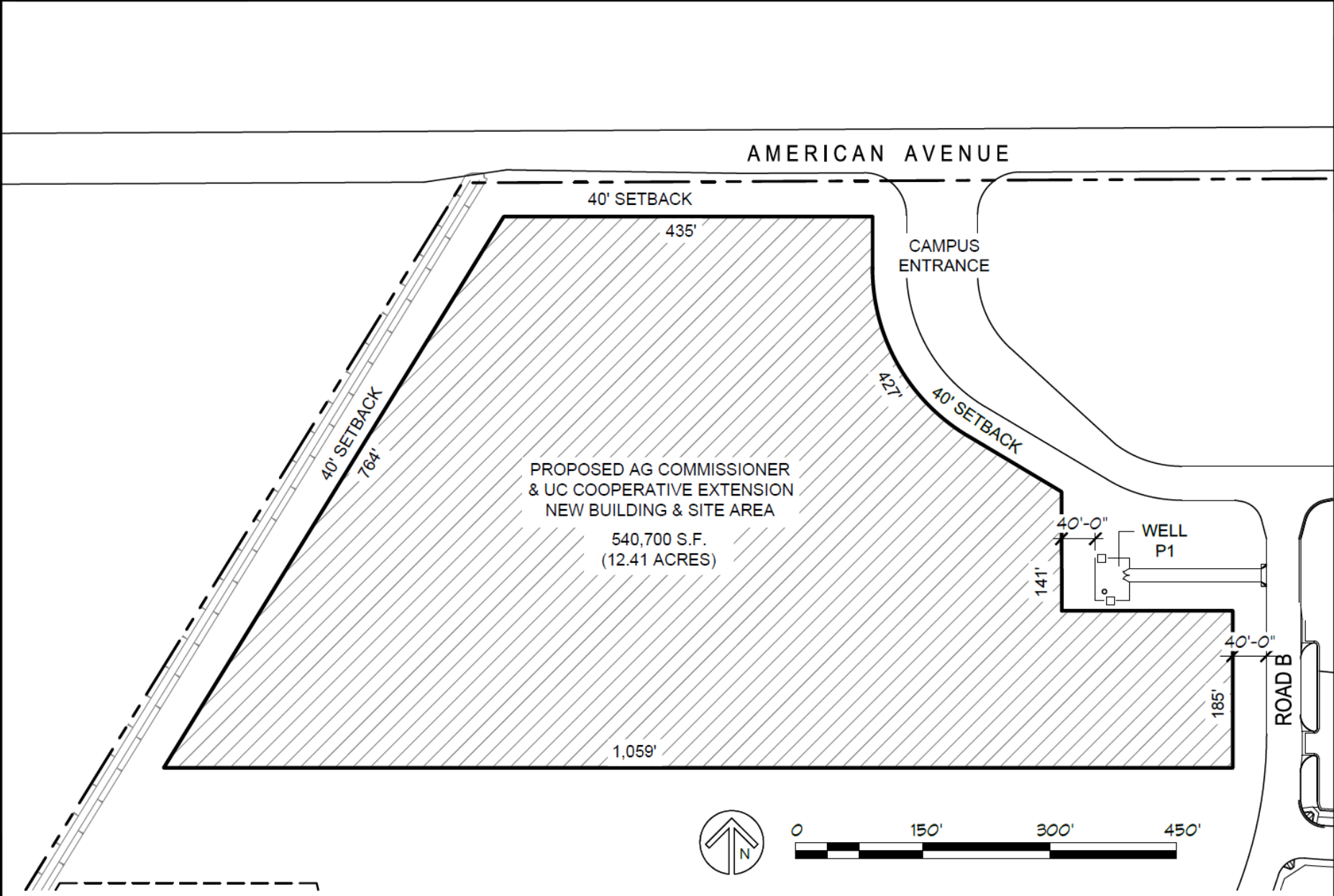


Exhibit C - Project Site Plan

County of Fresno





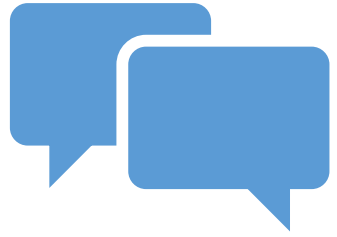
Upcoming Vertical Construction

- Environmental Compliance Center Education Building
- Radio Tower Installation in Tranquility, Reedley, and Clovis
- Department of Behavioral Health Olive Campus Remodel



Upcoming Horizontal Construction

- Elkhorn Groundwater Recharge Facility
- Mt. Whitney Road Improvements from Marks to Blythe
- Kearney Park Improvements
- ~~Bridge Replacement Nees Ave over Delta-Mendota Canal~~
- Bridge Replacement Englehart Ave over Reedley Main Canal, Travers Creek Bridge on Parlier Ave, and Travers Creek Bridge on Lincoln



Q&A – Open Discussion



Closing Remarks



Need more information?

Contact Jennica Geddert:

(559) 353-4919; DesignServices@fresnocountyca.gov

Interested in our upcoming design-build and bidding opportunities?

Sign up at: www.fresnocountyca.gov/planholders

“Notify Me of Construction Bidding Opportunities Form”