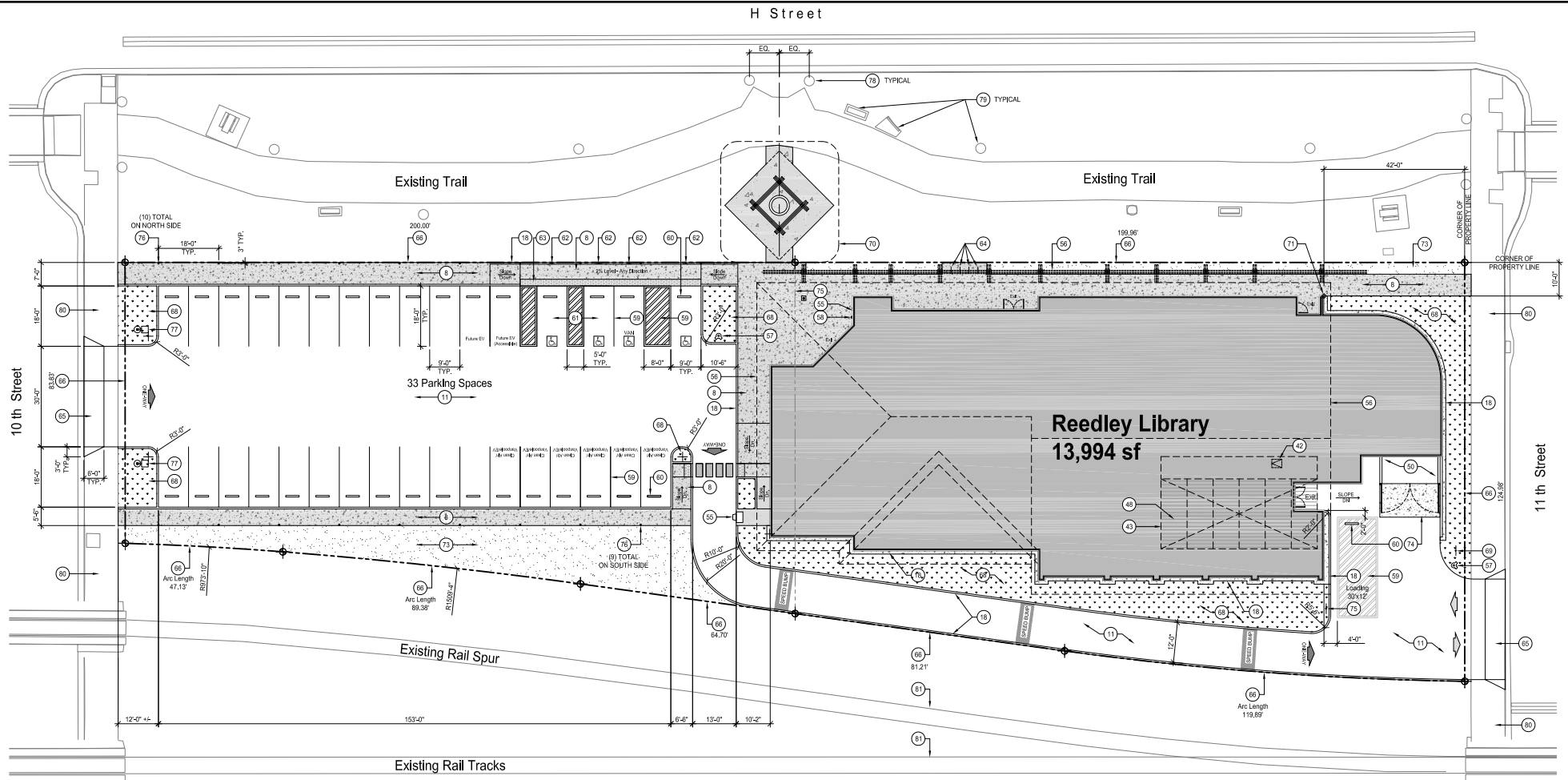


Exhibit A - Vicinity Map





Keynotes

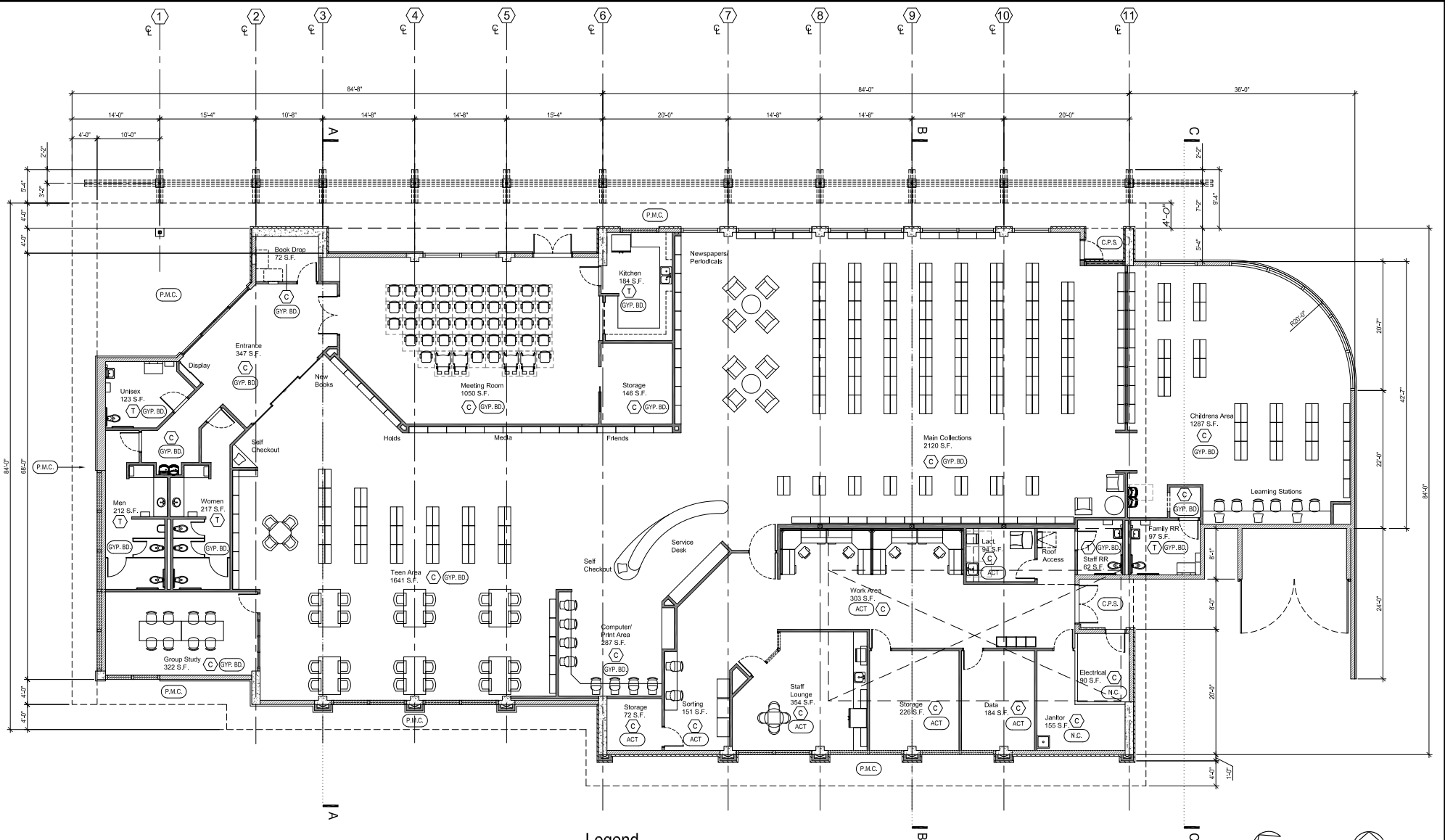
SYMBOL
ON DRAWINGS

1. NATIVE SOIL.
2. ENGINEERED FILL.
3. CONCRETE FOOTING.
4. MOISTURE BARRIER DIRECTLY OVER COMPACTED ENGINEERED FILL.
5. CONCRETE SLAB.
6. CONCRETE PLASTER.
7. CONCRETE POST.
8. CONCRETE WALK.
9. 8" THICK REINFORCED C.M.U. WALL, FULLY GROUTED.
10. TUBE STEEL COLUMN.
11. ASPHALT PAVEMENT.
12. OPEN WEB STEEL TRUSS.
13. STEEL "C" JOIST.
14. WIDE FLANGE STEEL BEAM.
15. WIDE FLANGE STEEL OUTRIGGER BEAM.
16. LIGHT GAUGE METAL FRAMING.
17. TUBE STEEL FRAMING, PAINT.
18. CONCRETE CURB/ MAINTENANCE STRIP.
19. ROOF LEADER.
20. ROOF GUTTER SYSTEM WITH S.S. MESH GUTTER GUARD.
21. BRASS DOWNSPOUT NOZZLE.
22. FOIL FACED FIBERGLASS BATT ATTIC INSULATION.
23. ISO BOARD INSULATION.
24. THIN FACE BRICK (2 1/4"x7 5/8" X 9 1/16" THK, TYPE "X" WIRE-CUT) SYSTEM OVER SCRATCH COAT OVER METAL LATH OVER DRAINAGE MAT OVER R-19 ISO BOARD INSULATION OVER WATER RESISTANT BARRIER. POINTING - CONCAVE WITH TYPE "N" MORTAR.
25. PRE-FINISHED METAL WALL PANEL OVER HAT SHAPED SUB-GIRT OVER 2-GIRT AND R-19 ISO BOARD CONTINUOUS INSULATION OVER WATER RESISTANT BARRIER.
26. PRE-FINISHED CURVED METAL WALL PANEL OVER HAT SHAPED SUB-GIRT OVER 2-GIRT AND R-19 ISO BOARD CONTINUOUS INSULATION OVER WATER RESISTANT BARRIER.
27. PRE-FINISHED METAL SOFFIT PANEL, "PAC-CLAD ARCHITECTURAL METAL" OR EQUAL.
28. PRE-FINISHED PERFORATED (MAX. HOLE SIZE 1/8" DIA.) METAL SOFFIT PANEL, "PAC-CLAD ARCHITECTURAL METAL" OR EQUAL.
29. PRE-FINISHED INSULATED METAL ROOF PANEL OVER "C" PURLIN.
30. CORRUGATED METAL ROOF DECKING.
31. ASPHALT MODIFIED BITUMINOUS ROOFING OVER 1/2" ROOF BOARD OVER RIGID INSULATION.
32. RIDGE VENT SYSTEM.
33. HOLLOW METAL PAINTED WINDOW FRAME WITH DOUBLE PANE GLAZING.
34. ANODIZED ALUMINUM STOREFRONT WINDOW SYSTEM.
35. HOLLOW METAL DOOR AND FRAME.
36. ANODIZED ALUMINUM STOREFRONT DOOR.
37. GYP. BOARD CEILING OVER METAL JOIST. PAINT.
38. SUSPENDED ACOUSTICAL TILE CEILING SYSTEM.
39. DIAMOND POLISHED CONCRETE FINISH. TYPICAL THROUGHOUT ALL AREAS EXCEPT RESTROOMS.
40. QUARRY TILE FLOORING WITH COLORED EPOXY GROUT. TYPICAL THROUGHOUT ALL RESTROOMS.
41. BUILDING OUTLINE BEHIND - SHOWN FOR REFERENCE.
42. ROOF ACCESS HATCH.
43. ROOFTOP MECHANICAL UNIT CHASE.
44. ATTIC ACCESS HATCH.
45. MECHANICAL UNIT ON METAL ROOF CURB.
46. PRE-FINISHED METAL ROOF PANEL OVER STEEL FRAMING.
47. STEEL COLUMN BEHIND - SHOWN FOR REFERENCE.
48. ROOF EQUIPMENT VISUAL SCREENING.
49. 5/8" FIRE RATED GYP. BOARD, PAINT.
50. C.M.U. TRASH ENCLOSURE AND GATES PER CITY OF REEDLEY ST-50 AND ST-51. SEE FLOOR PLAN FOR DIMENSIONS.
51. BUILDING SIGNAGE.
52. ALUMINUM REVEAL.
53. THREE COAT EXTERIOR GRADE HEAVY DUTY PAINT.
54. PAINTED METAL FASCIA.
55. METAL BOOK DROP UNIT.
56. ROOF OVERHANG/ STRUCTURE ABOVE.
57. PROPOSED FIRE HYDRANT PER CITY OF REEDLEY.
58. KNOX-BOX PER CITY OF REEDLEY FIRE DEPARTMENT.
59. PAINTED ASPHALT STRIPING.
60. CONCRETE WHEEL STOP.
61. ACCESSIBLE PARKING STALL.
62. ACCESSIBLE PARKING SIGN.
63. PRE-MANUFACTURED TRUNCATED DOMES.
64. (4) BIKE RACKS - (8 BIKES TOTAL)
65. CONCRETE DRIVE APPROACH.
66. PROPERTY LINE.
67. NOT USED.
68. LANDSCAPING WITH RIVER ROCK BED.
69. SIGN: "NO PUBLIC ENTRANCE"
70. NEW ARBOR, FOUNTAIN, AND A/C WALK - BY OTHER, NOT PART OF THIS CONTRACT.
71. BUILDING REFERENCE POINT.
72. CASED OPENING.
73. GRADED NATIVE SOIL.
74. TRASH BIN ENCLOSURE CONCRETE APRON PER CITY OF REEDLEY "ST-53"
75. SIGN: "NO ENTRANCE ONE WAY TRAFFIC"
76. BOLLARD WITH ILLUMINATED FIXTURE.
77. LAMPOST AND CONCRETE BASE.
78. EXISTING LAMPOST.
79. EXISTING TRAIL HARDSCAPE.
80. EXISTING CONCRETE WALK.



Exhibit B - Site Plan





Legend

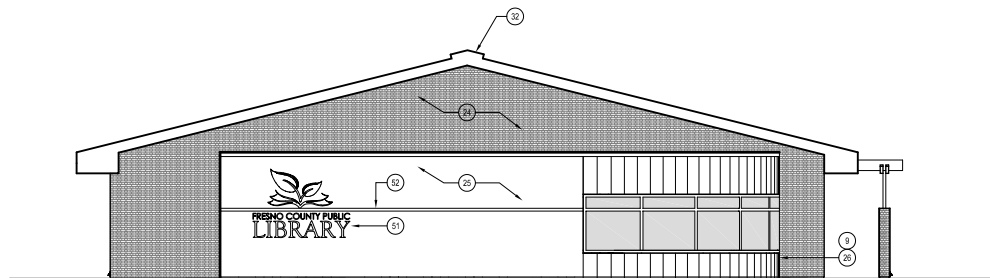
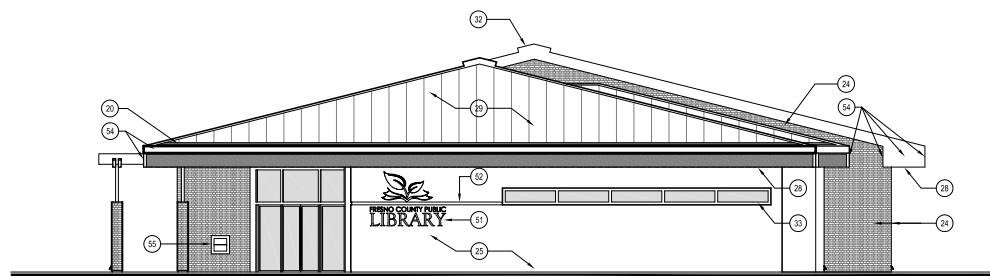
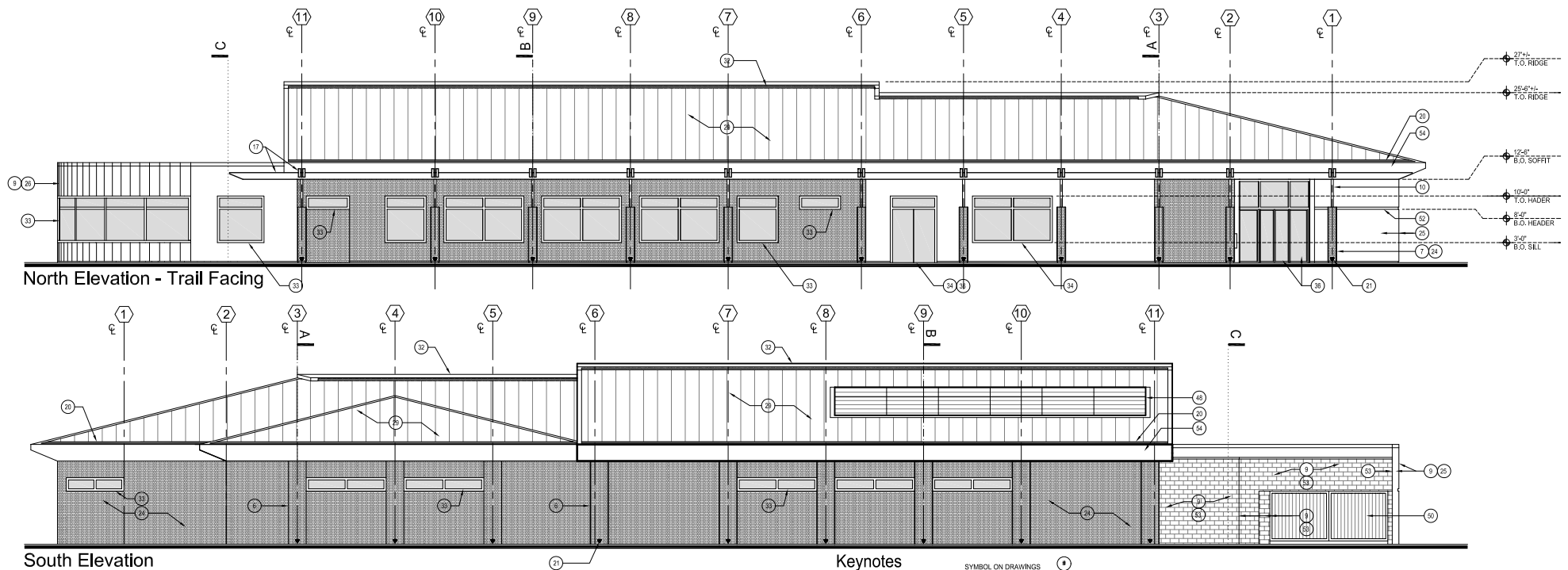
- | | | | |
|------------|---|--------|-------------------------------------|
| (C) | DIAMOND POLISHED CONCRETE FINISH | (N.C.) | NO CEILING. BARE STRUCTURE. |
| (T) | QUERY TILE FLOORING WITH COLORED EPOXY GROUT. | | THIN FACE BRICK ON THICK-SET SYSTEM |
| (GYP. BD.) | GYP. BOARD CEILING OVER METAL JOIST. PAINT. | | PRE-FABRICATED METAL WALL PANEL |
| (ACT) | SUSPENDED ACOUSTICAL TILE CEILING SYSTEM. | | 8" THICK REINFORCED C.M.U. |
| (P.M.C.) | PRE-FINISHED PERFORATED (MAX. HOLE SIZE 1/8" DIA.) METAL SOFFIT PANEL. "PAC-CLAD ARCHITECTURAL METAL" OR EQUAL. | | CONCRETE WALL/PLASTER |
| (C.P.S.) | 3/4" EXTERIOR CEMENT PLASTER SOFFIT. | | |



Exhibit C - Floor Plan

County of Fresno





Keynotes

SYMBOL ON DRAWINGS

1. NATIVE SOIL.
2. ENGINEERED FILL.
3. CONCRETE FOOTING.
4. MOISTURE BARRIER DIRECTLY OVER COMPACTED ENGINEERED FILL.
5. CONCRETE SLAB.
6. CONCRETE PILASTER.
7. CONCRETE POST.
8. CONCRETE WALK.
9. 8" THICK REINFORCED C.M.U. WALL. FULLY GROUTED.
10. TUBE STEEL COLUMN.
11. ASPHALT PAVEMENT.
12. OPEN WEB STEEL TRUSS.
13. STEEL "C" JOIST.
14. WIDE FLANGE STEEL BEAM.
15. WIDE FLANGE STEEL OUTRIGGER BEAM.
16. LIGHT GAUGE METAL FRAMING.
17. TUBE STEEL FRAMING. PAINT.
18. CONCRETE CURB/ MAINTENANCE STRIP.
19. ROOF LEADER.
20. ROOF GUTTER SYSTEM WITH S.S. MESH GUTTER GUARD.
21. BRASS DOWNSPOUT NOZZLE.
22. FOIL FACED FIBERGLASS BATT ATTIC INSULATION.
23. ISO BOARD INSULATION.
24. THIN FACE BRICK (2 1/4"x7 5/8" X 9 1/16" THK., TYPE "X" WIRE-CUT) SYSTEM OVER SCRATCH COAT OVER METAL LATH OVER DRAINAGE MAT OVER ISO BOARD INSULATION OVER WATER RESISTANT BARRIER. POINTING - CONCAVE WITH TYPE "N" MORTAR.
25. PRE-FINISHED METAL WALL PANEL OVER HAT SHAPED SUB-GIRT OVER Z-GIRT AND ISO BOARD CONTINUOUS INSULATION OVER WATER RESISTANT BARRIER.
26. PRE-FINISHED CURVED METAL WALL PANEL OVER HAT SHAPED SUB-GIRT OVER Z-GIRT AND ISO BOARD CONTINUOUS INSULATION OVER WATER RESISTANT BARRIER.
27. PRE-FINISHED METAL SOFFIT PANEL, "PAC-CLAD ARCHITECTURAL METAL" OR EQUAL.
28. PRE-FINISHED PERFORATED (MAX. HOLE SIZE 1/8" DIA.) METAL SOFFIT PANEL, "PAC-CLAD ARCHITECTURAL METAL" OR EQUAL.
29. PRE-FINISHED INSULATED METAL ROOF PANEL OVER "C" PURLIN.
30. CORRUGATED METAL ROOF DECKING.
31. ASPHALT MODIFIED BITUMINOUS ROOFING OVER 1/2" ROOF BOARD OVER RIGID INSULATION.
32. METAL ROOF RIDGE.
33. HOLLOW METAL PAINTED WINDOW FRAME WITH DOUBLE PANE GLAZING.
34. ANODIZED ALUMINUM STOREFRONT WINDOW SYSTEM.
35. HOLLOW METAL DOOR AND FRAME.
36. ANODIZED ALUMINUM STOREFRONT DOOR.
37. GYP. BOARD CEILING OVER METAL JOIST. PAINT.
38. SUSPENDED ACOUSTICAL TILE CEILING SYSTEM.
39. DIAMOND POLISHED CONCRETE FINISH.
40. QUARRY TILE FLOORING WITH COLORED EPOXY GROUT.
41. BUILDING OUTLINE BEHIND - SHOWN FOR REFERENCE.
42. ROOF ACCESS HATCH.
43. ROOFTOP MECHANICAL UNIT CHASE.
44. ATTIC ACCESS HATCH.
45. MECHANICAL UNIT ON METAL ROOF CURB.
46. PRE-FINISHED METAL ROOF PANEL OVER STEEL FRAMING.
47. STEEL COLUMN BEHIND - SHOWN FOR REFERENCE.
48. REMOVABLE ROOF EQUIPMENT VISUAL SCREENING.
49. 5/8" FIRE RATED GYP. BOARD. PAINT.
50. C.M.U. TRASH ENCLOSURE WITH GATES (CORRUGATED METAL SIDING OVER HOLLOW METAL FRAME).
51. BUILDING SIGNAGE.
52. ALUMINUM REVEAL.
53. THREE COAT EXTERIOR GRADE HEAVY DUTY PAINT.
54. PAINTED METAL FASCIA.
55. METAL BOOK DROP UNIT.
56. ROOF OVERHANG/ STRUCTURE ABOVE.
57. PROPOSED FIRE HYDRANT PER CITY OF REEDLEY.
58. KNOX-BOX PER CITY OF REEDLEY FIRE DEPARTMENT.
59. PAINTED ASPHALT STRIPING.
60. CONCRETE WHEEL STOP.
61. ACCESSIBLE PARKING STALL.
62. ACCESSIBLE PARKING SIGN.
63. PRE-MANUFACTURED TRUNCATED DOMES.
64. (4) BIKE RACKS - (8 BIKES TOTAL)
65. CONCRETE DRIVE APPROACH.
66. PROPERTY LINE.
67. LOT LINE VOLUNTARY MERGER (DATE/ REF. NUMBER)
68. LANDSCAPING WITH RIVER ROCK BED.
69. NOT USED.
70. NEW ARBOR, FOUNTAIN, AND A/C WALK - BY OTHER, NOT PART OF THIS CONTRACT.
71. BUILDING REFERENCE POINT.

Exhibit D - Exterior Elevations



