

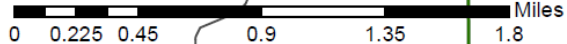
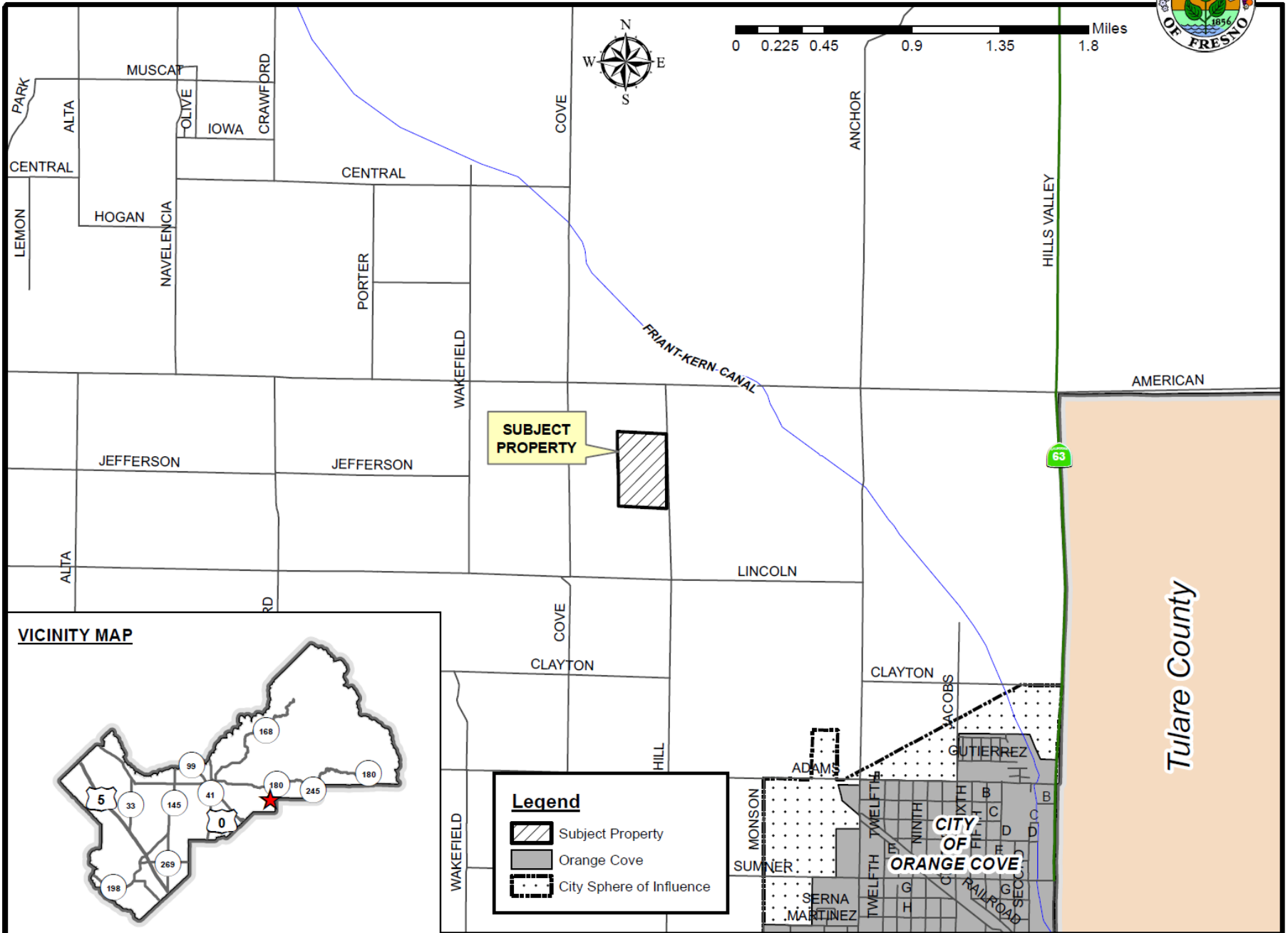


# DEPARTMENT of PUBLIC WORKS and PLANNING DEVELOPMENT SERVICES DIVISION

# CUP 3733

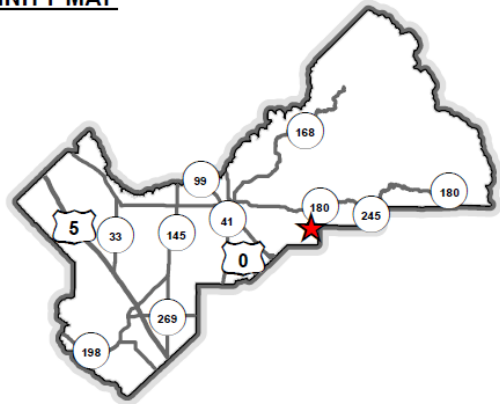


# LOCATION MAP






**SUBJECT PROPERTY**

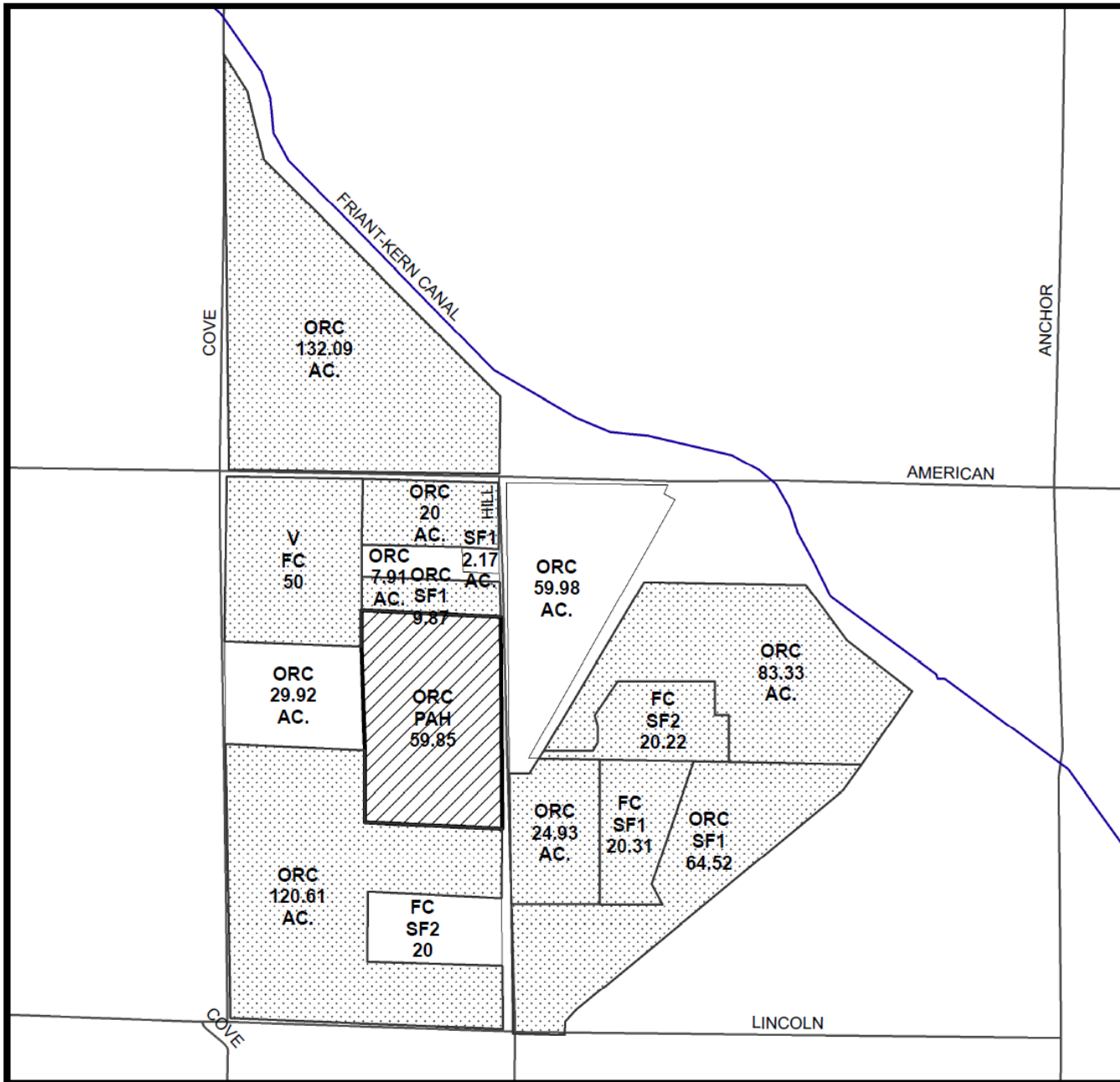
## VICINITY MAP



**Legend**

-  Subject Property
-  Orange Cove
-  City Sphere of Influence

# EXISTING LAND USE MAP



LEGEND	
FC	FIELD CROP
ORC	ORCHARD
SF#	SINGLE FAMILY RESIDENCE
V	VACANT
PAH	PACKING HOUSE

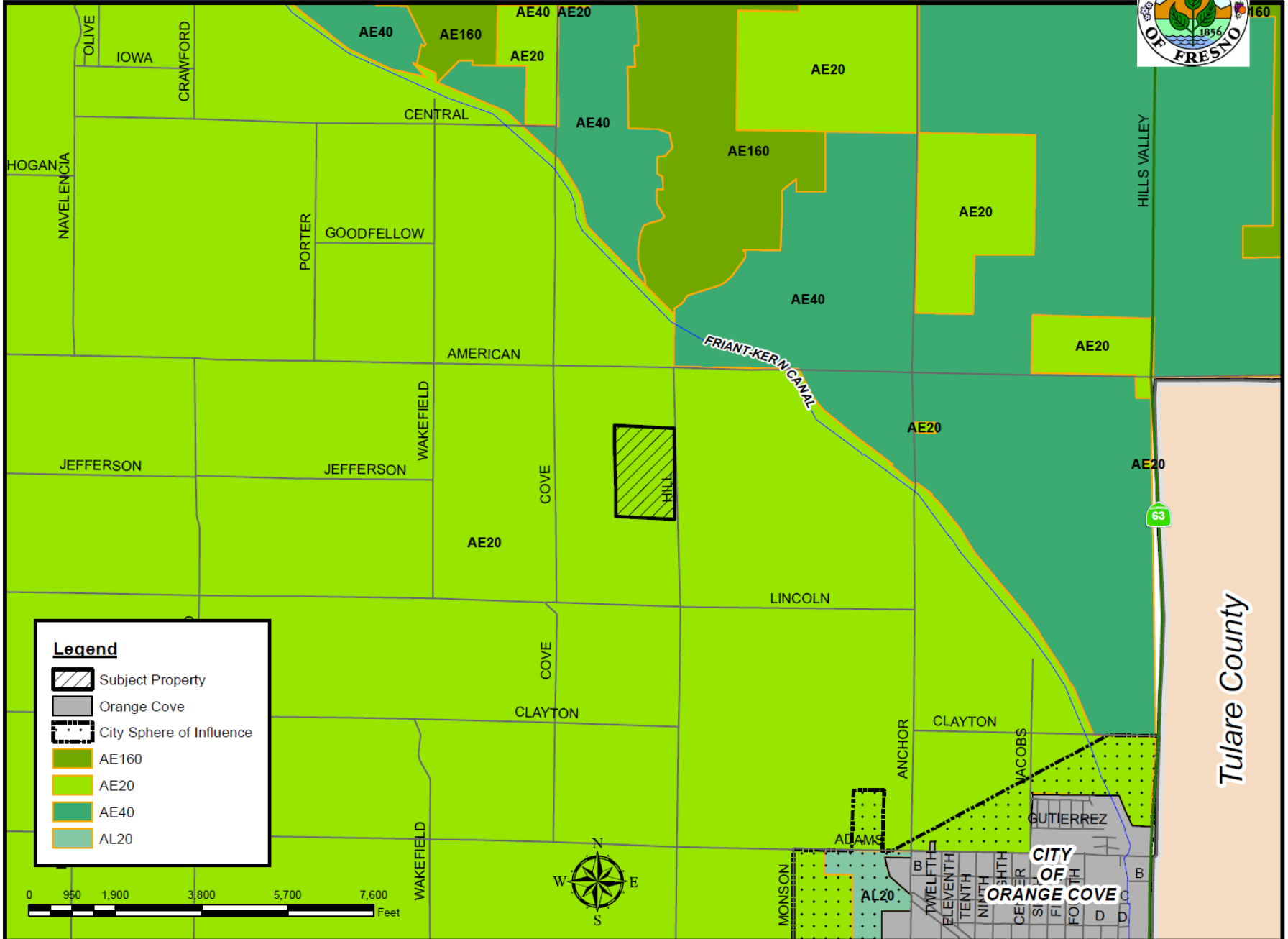
**LEGEND:**

- Subject Property
- Ag Contract Land



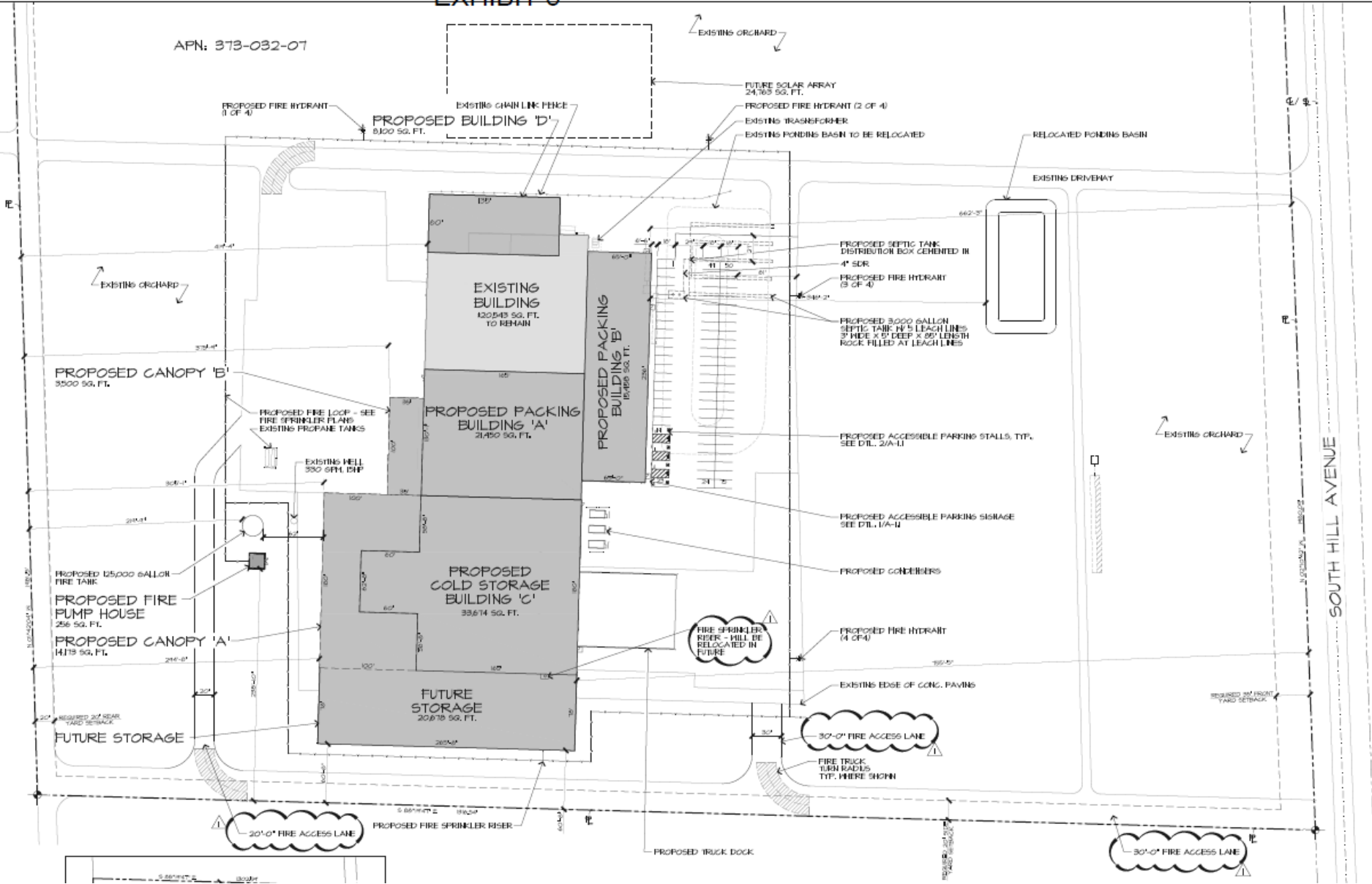
Department of Public Works and Planning  
Development Services Division

# EXISTING ZONING MAP



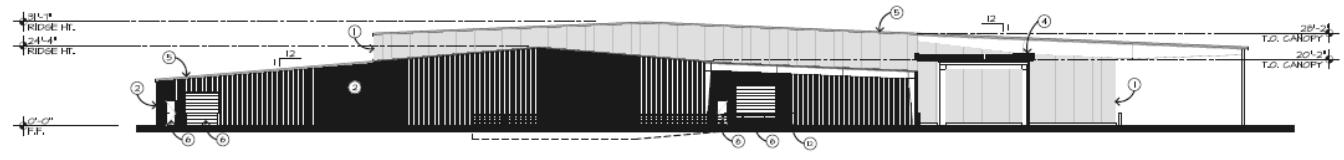
# EXHIBIT 5

APN: 373-032-07

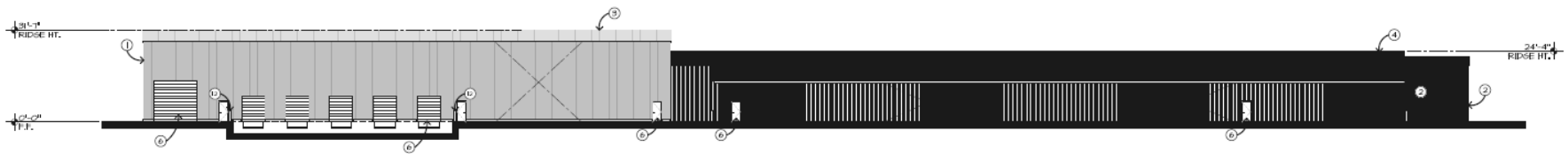


**EXTERIOR MATERIAL LIST:**

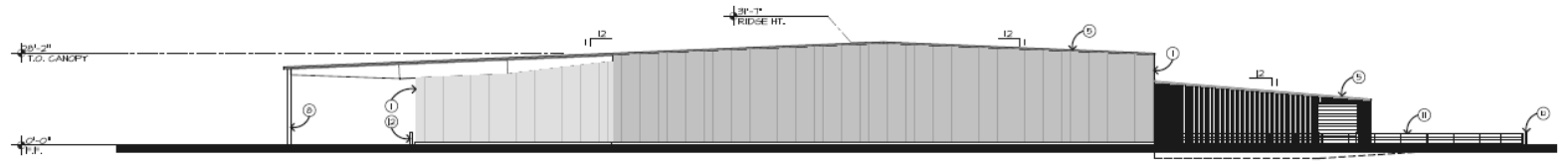
MARK	DESCRIPTION
①	AMP 4" THICK INSULATED PANEL
②	METAL WALL PANEL
③	AMP 5" THICK INSULATED ROOF PANEL
④	METAL ROOFING - BY MEHL
⑤	RAKE TRIM - BY MEHL
⑥	DOOR - SEE FLOOR PLAN
⑦	WINDOWS - SEE FLOOR PLAN
⑧	COLUMNS - BY MEHL
⑨	TRUCK HELL
⑩	SUPERAIL
⑪	BOLLARD - SEE PLAN
⑫	GRID



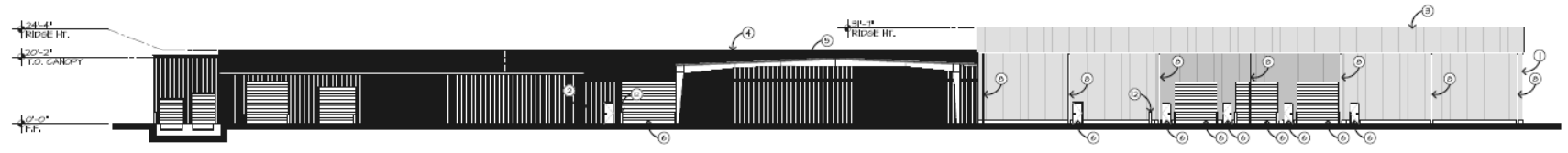
NORTH ELEVATION



EAST ELEVATION



SOUTH ELEVATION



WEST ELEVATION



EAST



NORTH





NORTHWEST



SOUTH



# Initial Study (Environmental Analysis)

- Staff determined a Mitigated Negative Declaration is sufficient for this project
- Less than significant environmental impact

<b>Findings</b>	<b>Description</b>	<b>Findings Met</b>
1	<b>Parcel's size and shape adequate</b>	YES
2	<b>Site can accommodate negligible traffic increase</b>	YES
3	<b>No adverse effect on surrounding neighborhood</b>	YES
4	<b>Consistent with General Plan</b>	YES
5	<b>Condition necessary for public health, safety, and general welfare</b>	YES