

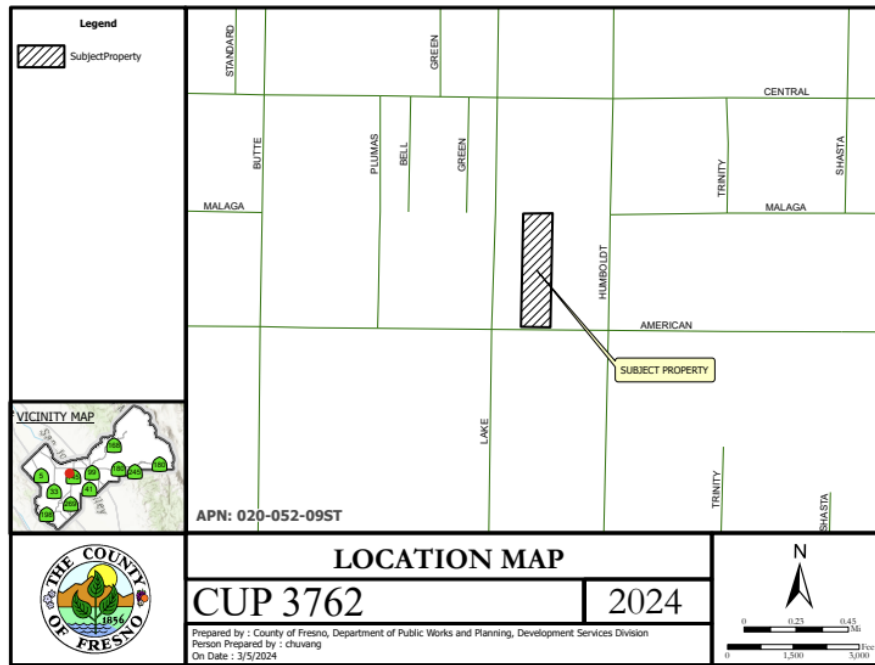


**DEPARTMENT of PUBLIC WORKS and PLANNING**  
**DEVELOPMENT SERVICES DIVISION**

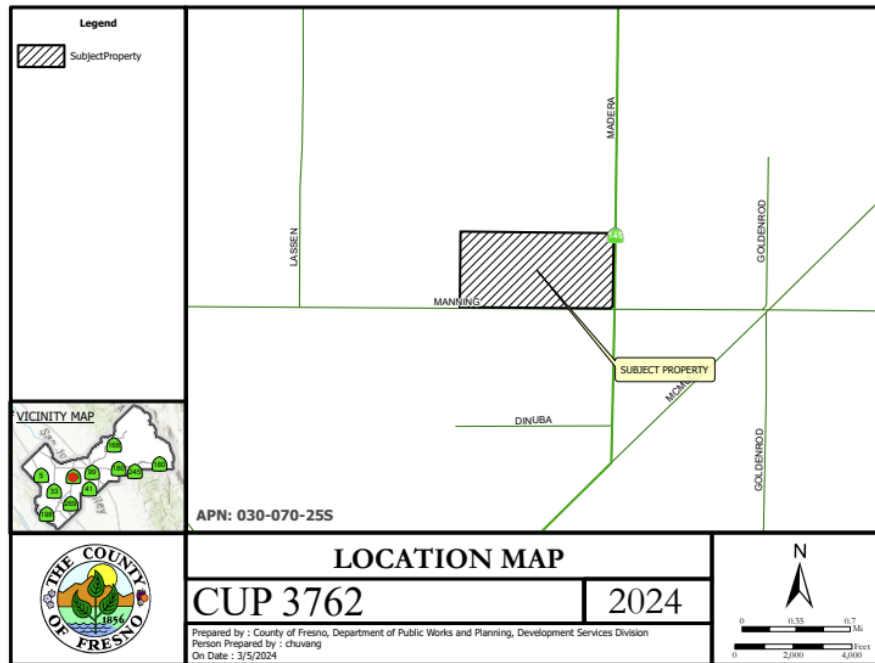


**CUP 3762**

**PC Hearing: April 25, 2024**



Path: G:\4360Devs&Pn\GIS\Completed GIS Maps\Landuse\cup3762\cup 3762.aprx



**LOCATION MAP**

CUP 3762

- Legend**
- 📍 court
  - 📍 Feature 1
  - 📍 GSB
  - 📍 Gypsy Jane's Painted house
  - 📍 Historical location of Fort Washington?
  - 📍 Mohammad Rahman
  - 📍 N Willow Ave & N Friant Rd
  - 📍 Trinity Community Church

American Ave- County Road

18950 W American Ave

PROJECT LANDFILL SITE

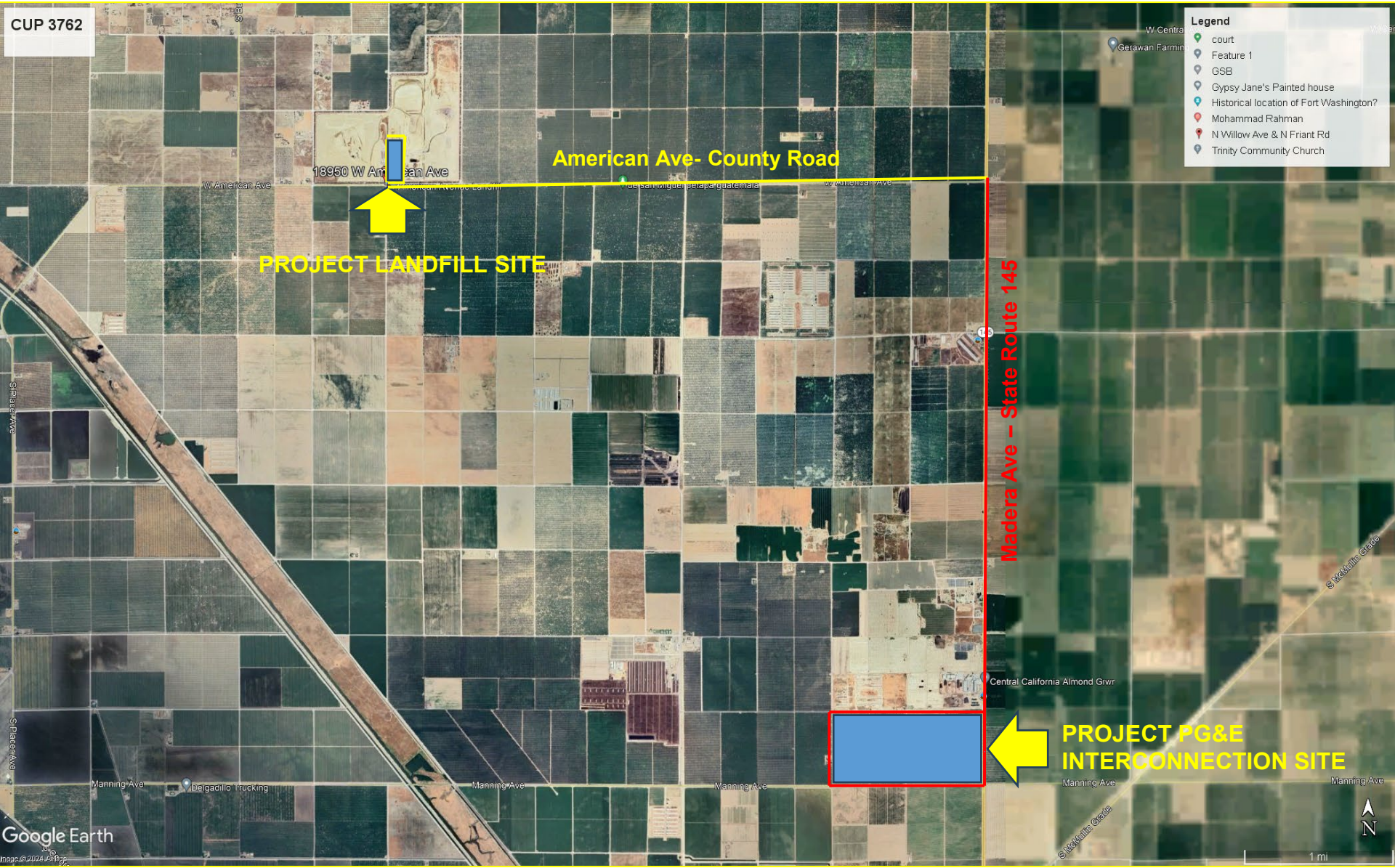
Madera Ave - State Route 145

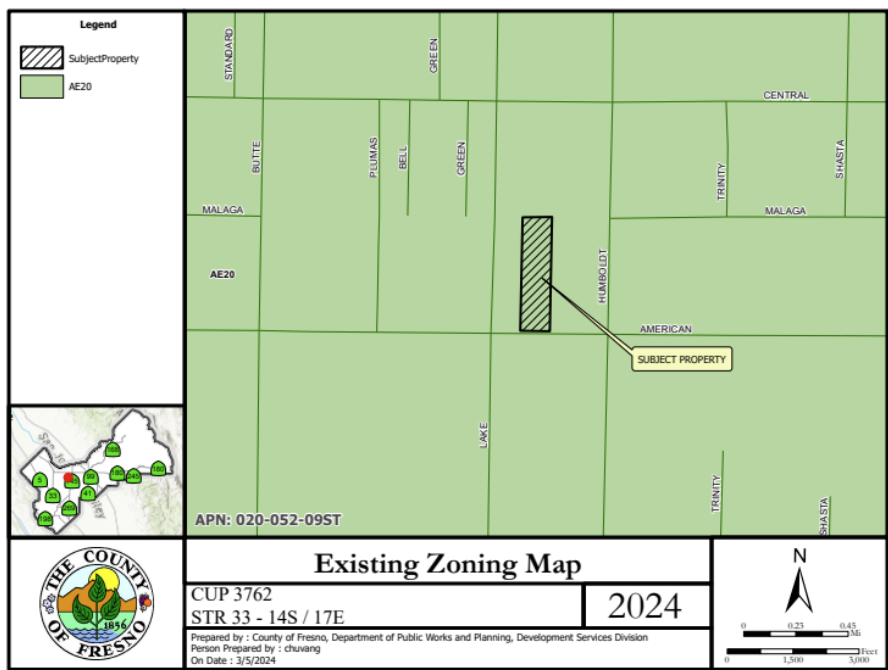
PROJECT PG&E INTERCONNECTION SITE

Google Earth

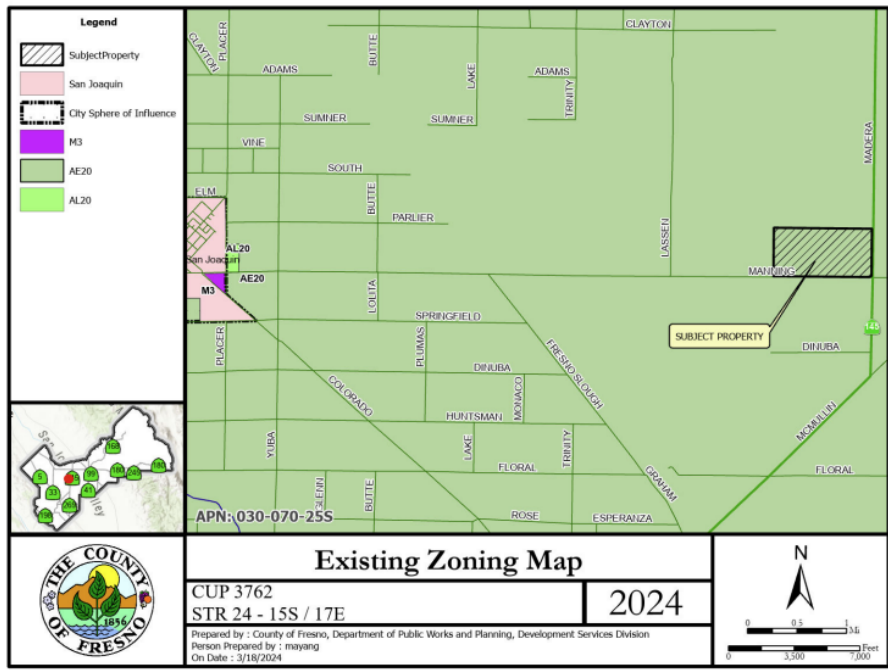


1 mi

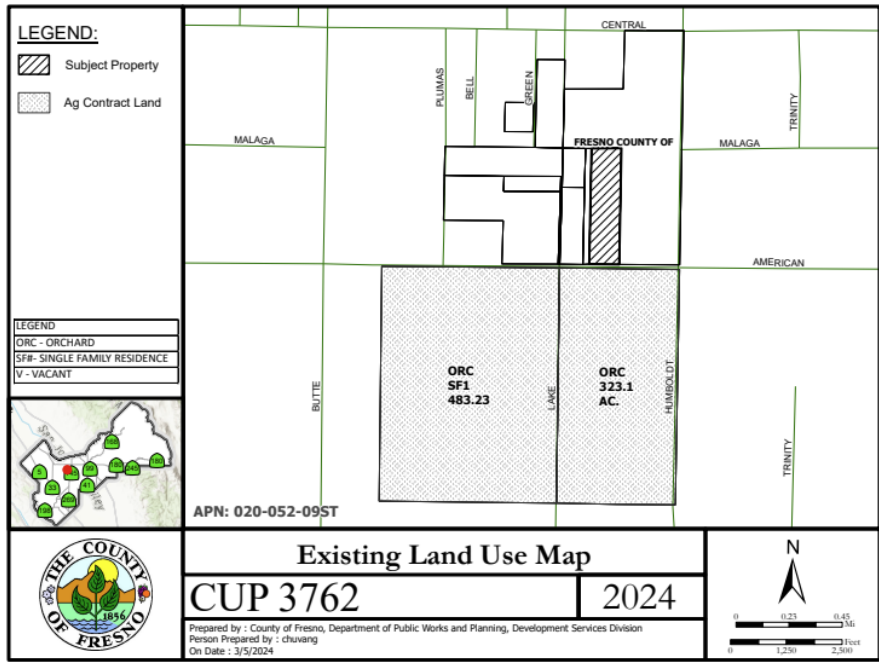




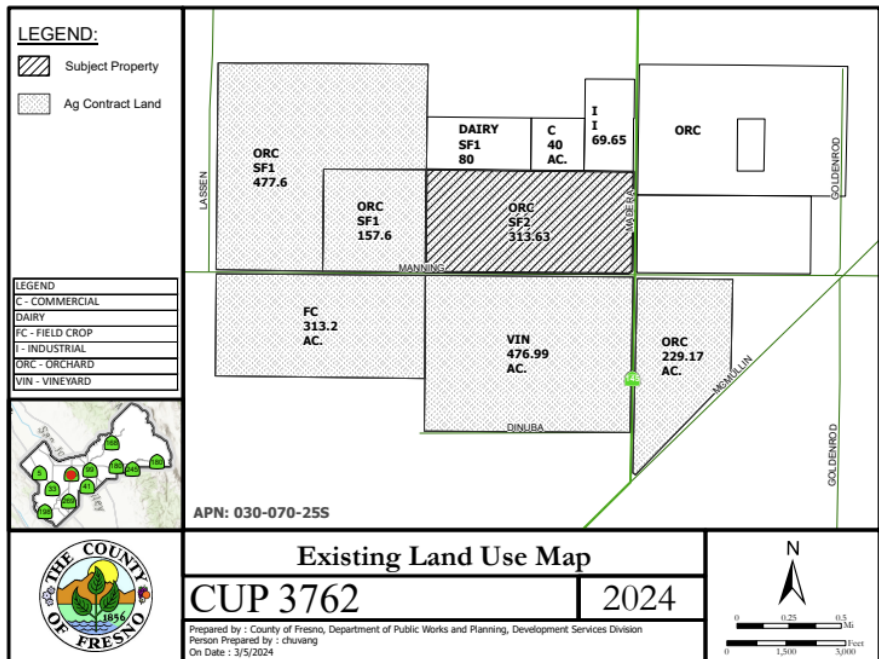
Path: G:\4360Devs&Pin\GIS\Completed GIS Maps\Landuse\cup3762\cup 3762.aprx



**EXISTING ZONING MAP**



Path: G:\4360Devs&Pin\GIS\Completed GIS Maps\Landuse\cup3762\cup 3762.aprx



**EXISTING LAND USE MAP**



39.55-acre  
Landfill Site



AADS Flare  
System

AADS Office and  
Maint. Bldg.

Landfill Gas  
Conditioning System  
1 acre Premises

Landfill Gas Delivery  
Pipeline

AADS Entrance  
and Exit  
Driveway

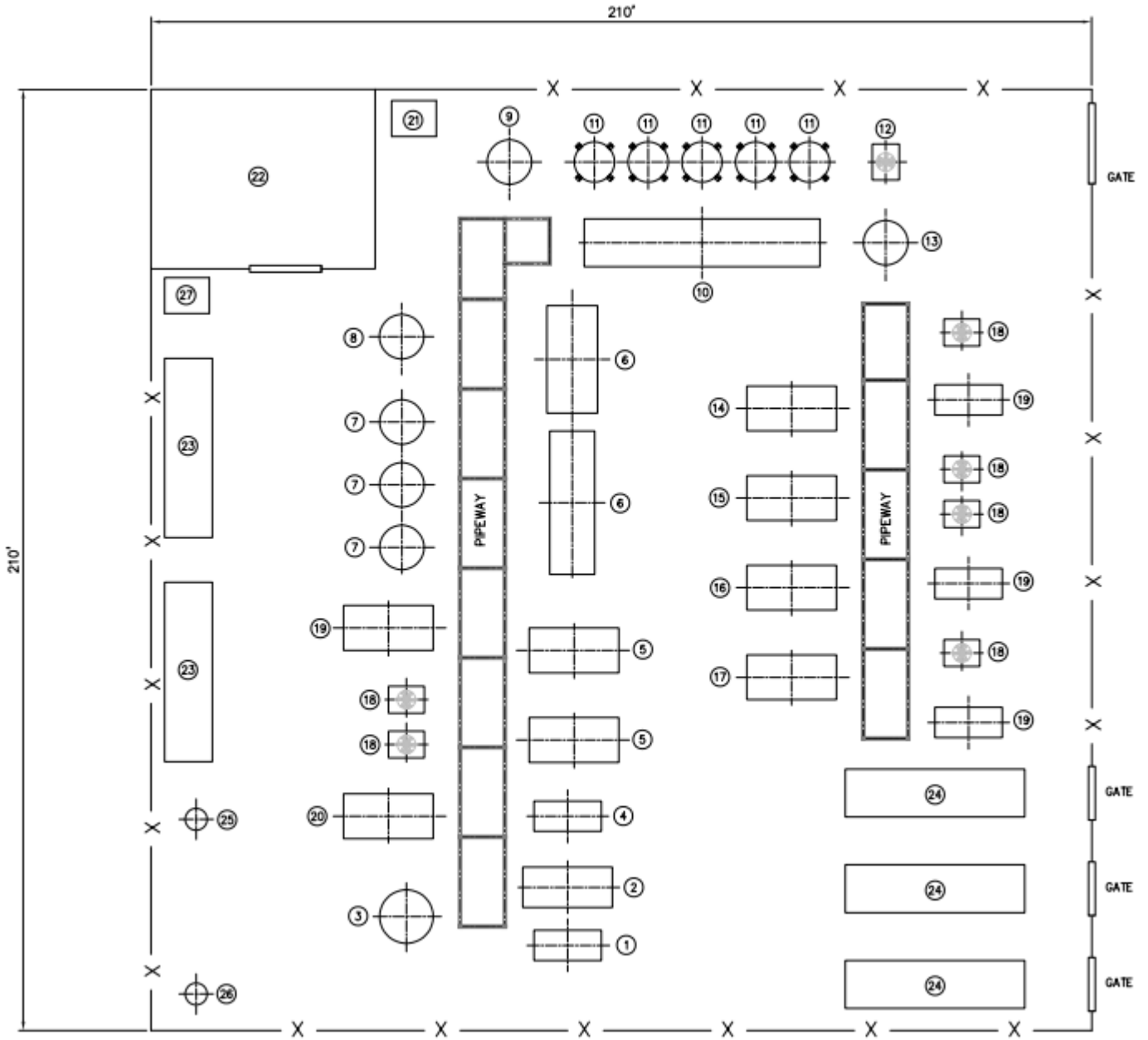
Outgoing  
Biomethane  
Pipeline

W American Ave

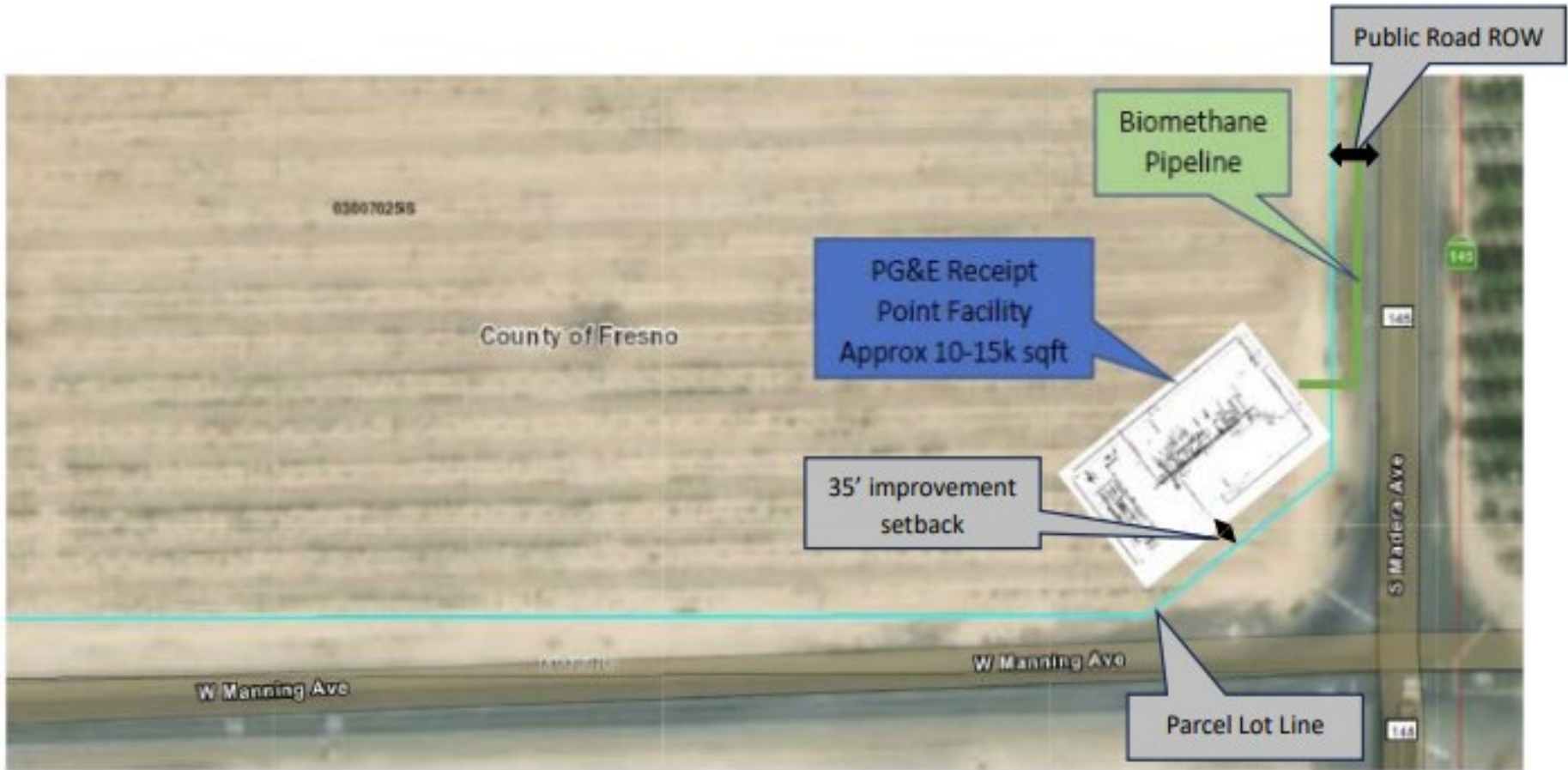
W American Ave

W American Ave

NO	EQUIPMENT DESCRIPTION
1	BLOWER SKID
2	BLOWER COOLER
3	H2S VESSEL
4	CHILLER SKID
5	FEED COMPRESSORS
6	AIR LIQUIDE SKIDS
7	AIR LIQUIDE ACTIVATED CARBON VESSELS
8	CO2 PRODUCT BUFFER VESSEL
9	N2 TAIL GAS BUFFER VESSEL
10	N2 PSA VALVE SKID
11	N2 ADSORBER VESSELS
12	PRODUCT GAS COOLER
13	PRODUCT GAS BUFFER TANK
14	N2 VACUUM COMPRESSOR
15	N2 RECYCLE COMPRESSOR
16	PRODUCT GAS COMPRESSION STAGE 1
17	PRODUCT GAS COMPRESSION STAGE 2
18	OIL COOLERS
19	GAS COOLERS
20	CHILLER CONDENSOR
21	PLANT AIR COMPRESSOR
22	POWER DISTRIBUTION CENTER
23	ENGINE/GENERATOR
24	NATURAL GAS UNLOADING BAYS
26	THERMAL OXIDIZER
27	TRANSFORMERS

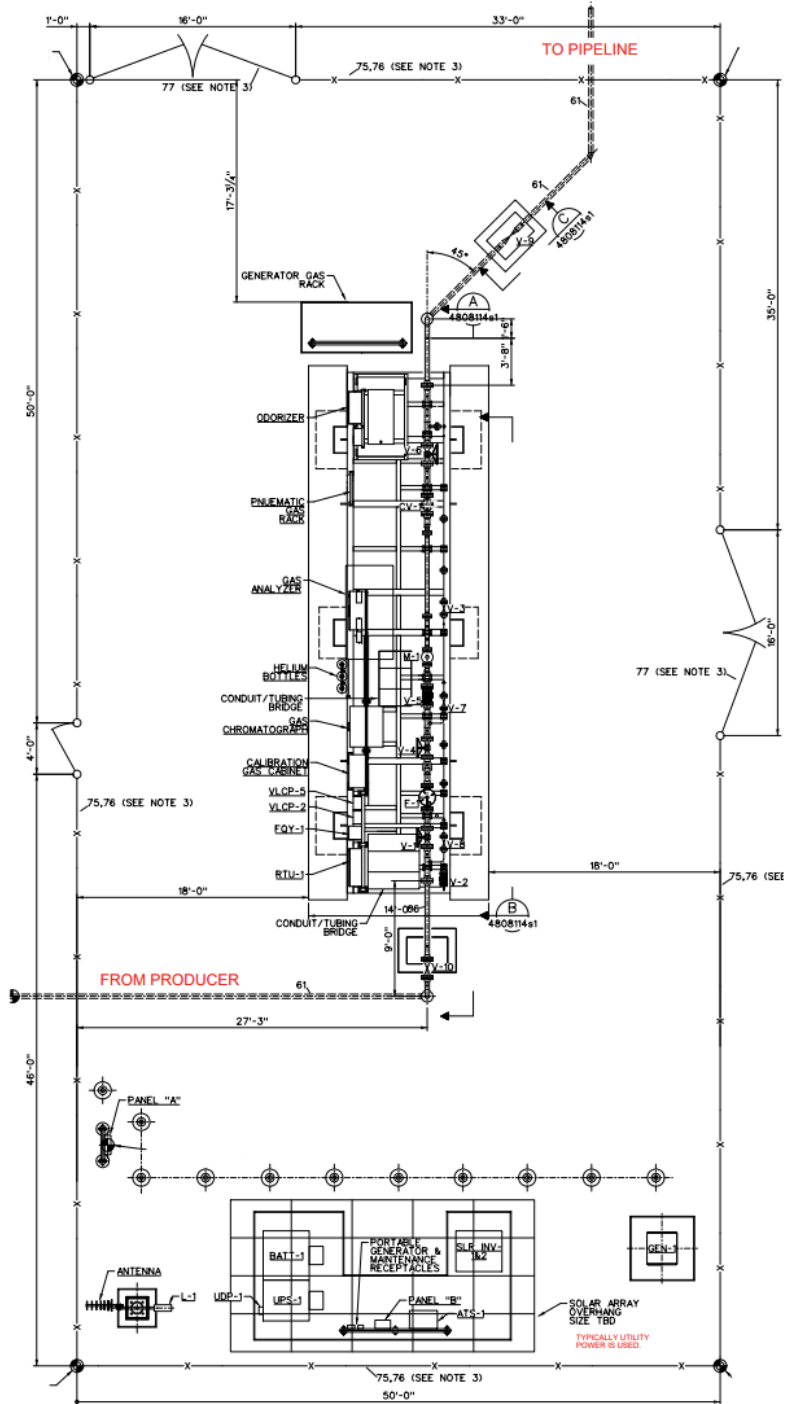


**FLOOR PLAN - Landfill Gas Conditioning system Improvements**



**SITE PLAN - PG&E Receipt Point Facility Improvements**





**FLOOR PLAN - PG&E improvement**

Findings	Description	Findings Met
1	<b>Size and shape of parcel is adequate.</b>	YES
2	<b>Streets and highways are adequate for use.</b>	YES
3	<b>No adverse effect on neighborhood.</b>	YES
4	<b>General Plan consistency.</b>	YES
5	<b>Conditions necessary for public health, safety, and general welfare.</b>	YES



**DEPARTMENT of PUBLIC WORKS and PLANNING**  
**DEVELOPMENT SERVICES DIVISION**



**CUP 3762**

**PC Hearing: April 25, 2024**



Biomethane Pipeline

Landfill Gas Conditioning System

PG&E Pipeline Point of Receipt Facility

County of Fresno

W American Ave

W American Ave

ve

W Manning Ave

W Manning Ave

S Manning Ave

S Manning Ave







