




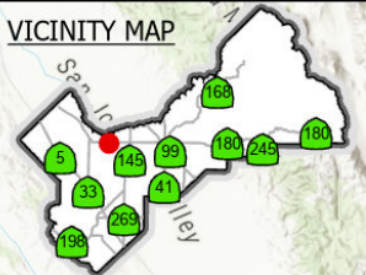
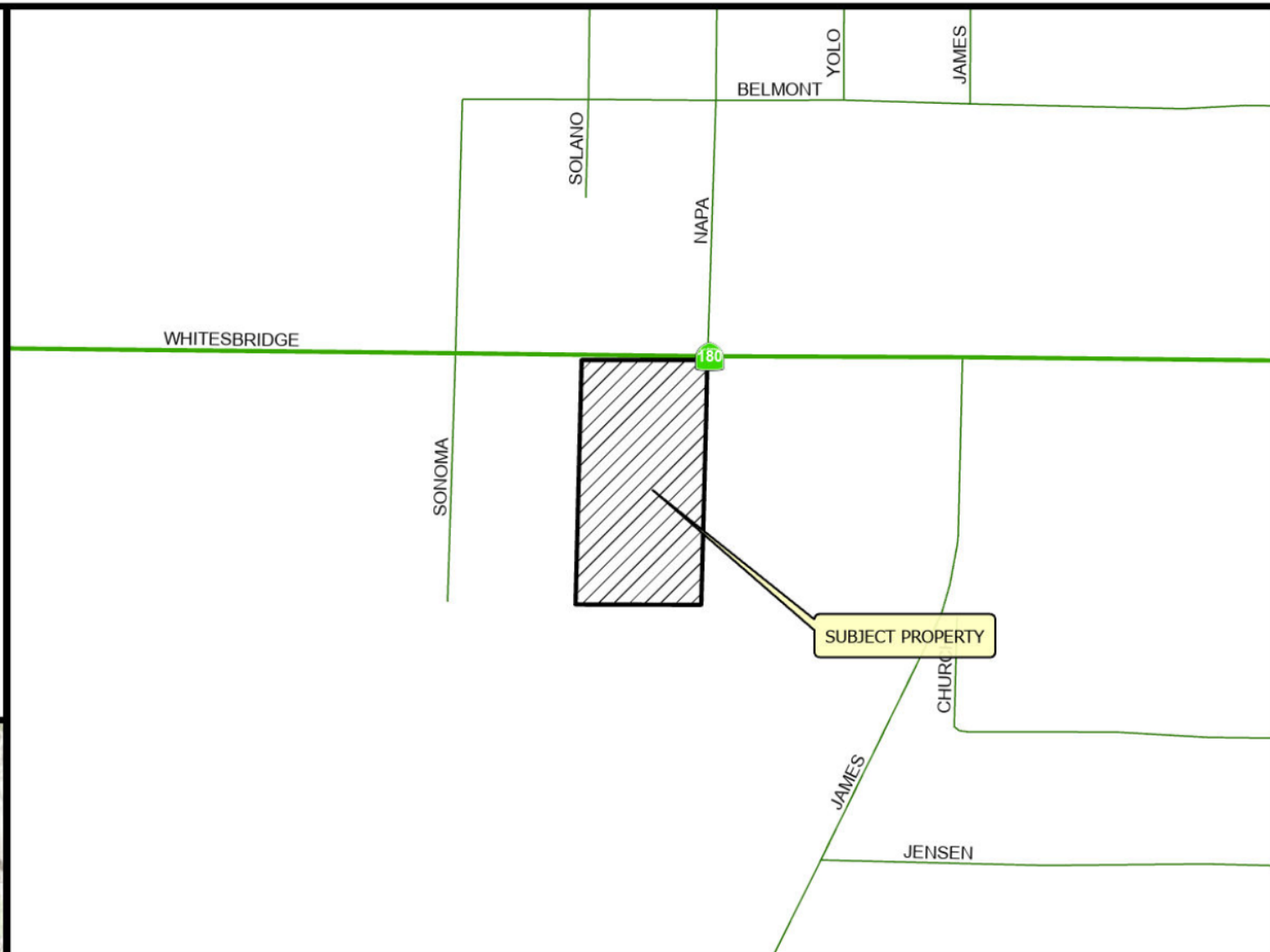
DEPARTMENT of PUBLIC WORKS and PLANNING
DEVELOPMENT SERVICES & CAPITAL PROJECTS DIVISION

CUP 3775



Legend

 Subject Property



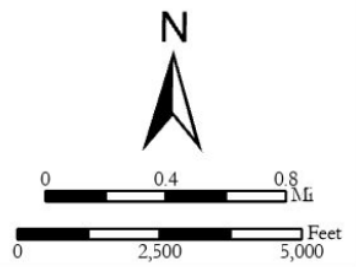
LOCATION MAP

CUP3775

2023



Prepared by : County of Fresno, Department of Public Works and Planning, Development Services Division
Person Prepared by : jocervantes
On Date : 10/24/2023





Mendota

Project site

Kerman

Whitesbridge Ave

33

145

145

33

180

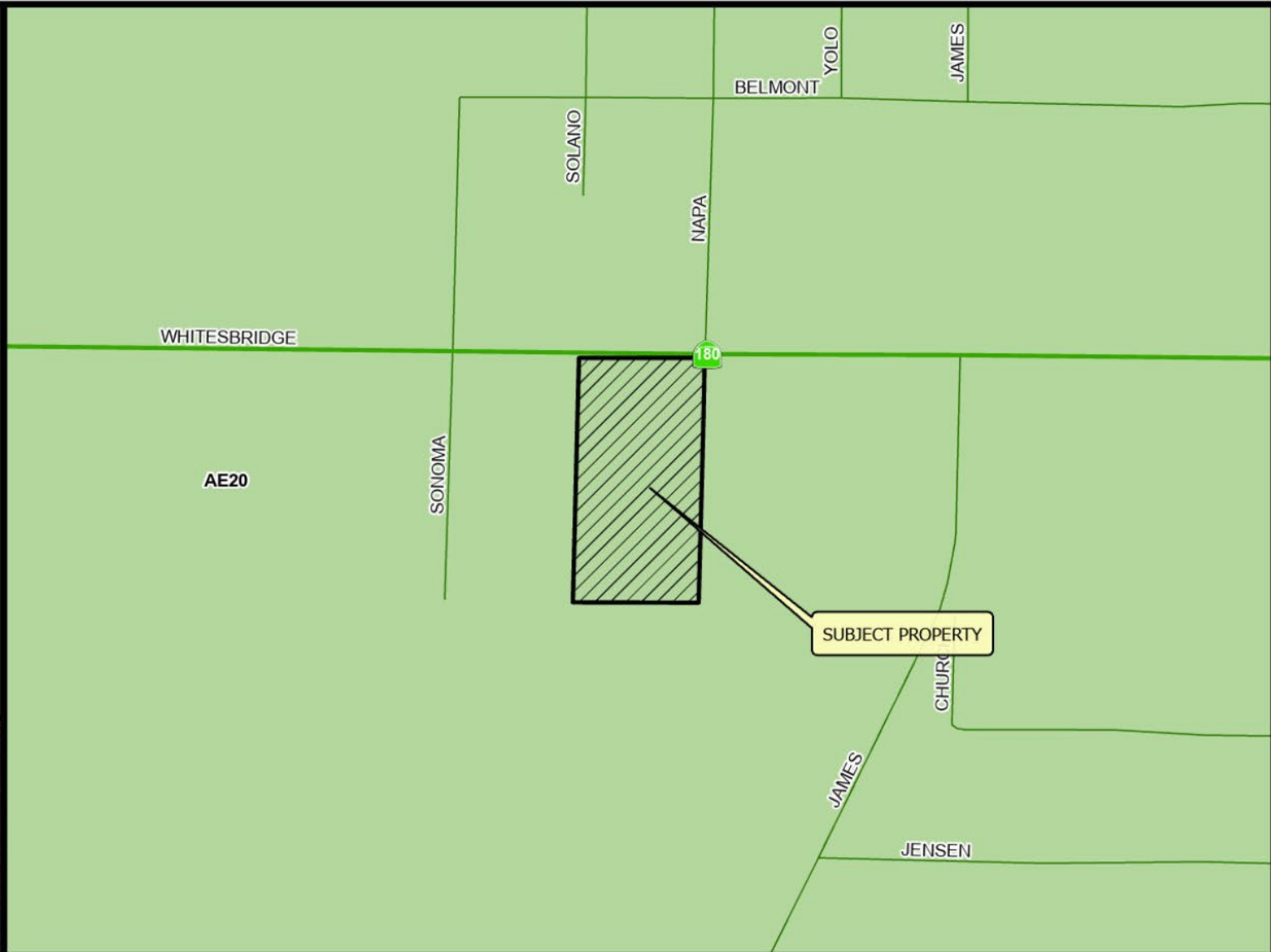
180

180

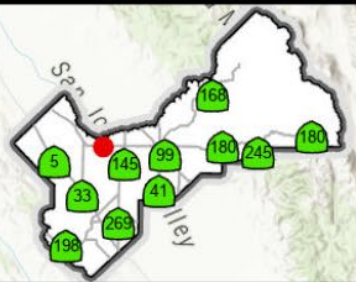
180

Legend

-  Subject Property
-  AE20



SUBJECT PROPERTY

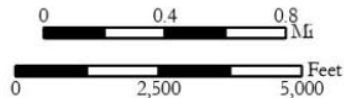


Existing Zoning Map

CUP3775
STR 9 - 14S / 20E

2023

Prepared by : County of Fresno, Department of Public Works and Planning, Development Services Division
Person Prepared by : jocervantes
On Date : 11/6/2023



SR 180

Whitesbridge Ave

Bar 20 Dairy Farms

S Sonoma Ave

Sonoma Ave

S Sonoma Ave

Mid Cal AG Aviation

BAR 20 Dairy

Approved
Hydrogen
Facility
(existing)

Approved
Solar facility

Proposed
hydrogen fuel
dispensers



2631 ft

Hydrogen facility site aerial –looking northeast



Hydrogen facility site aerial – looking southwest



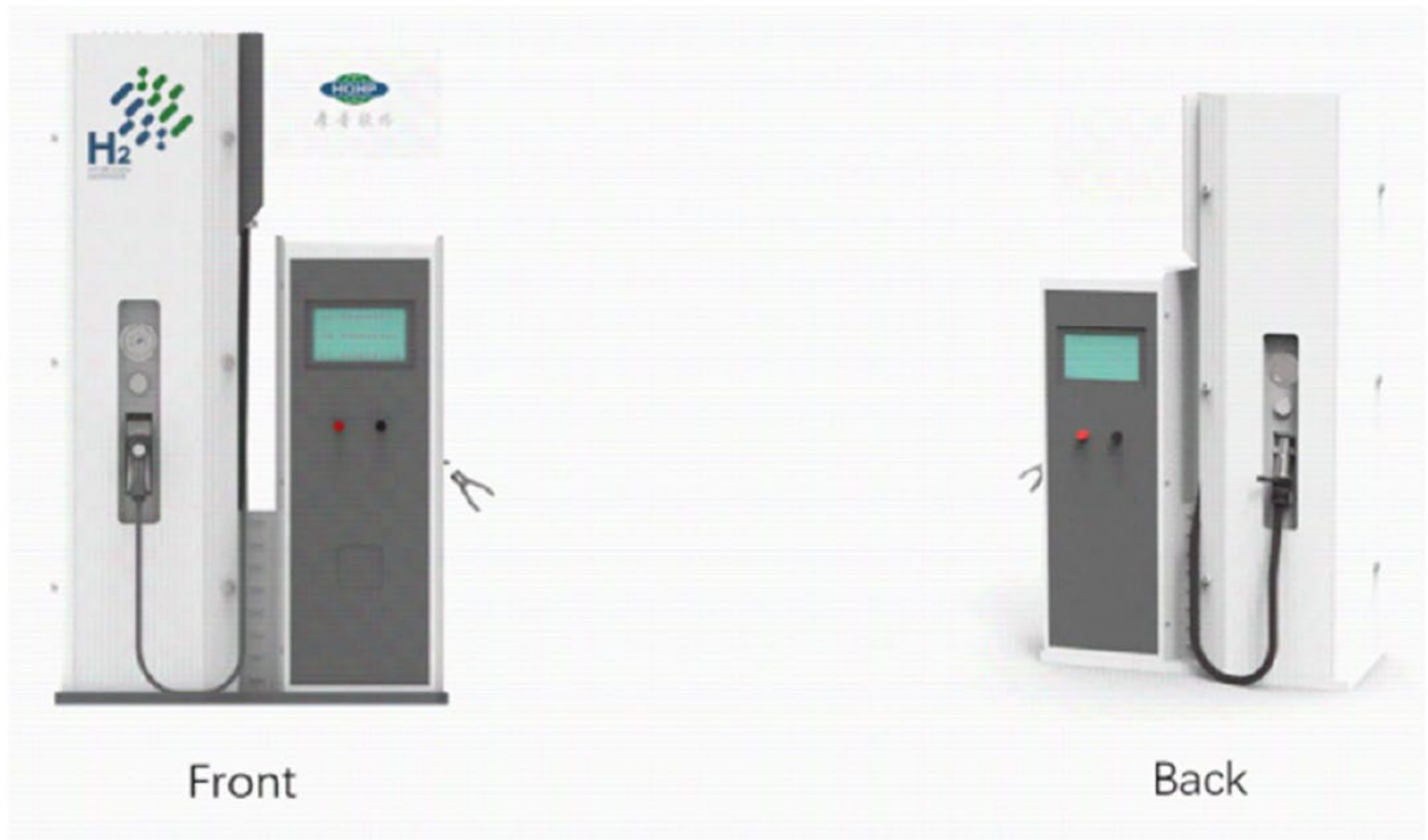


Image 1 - Proposed Hydrogen Dispenser

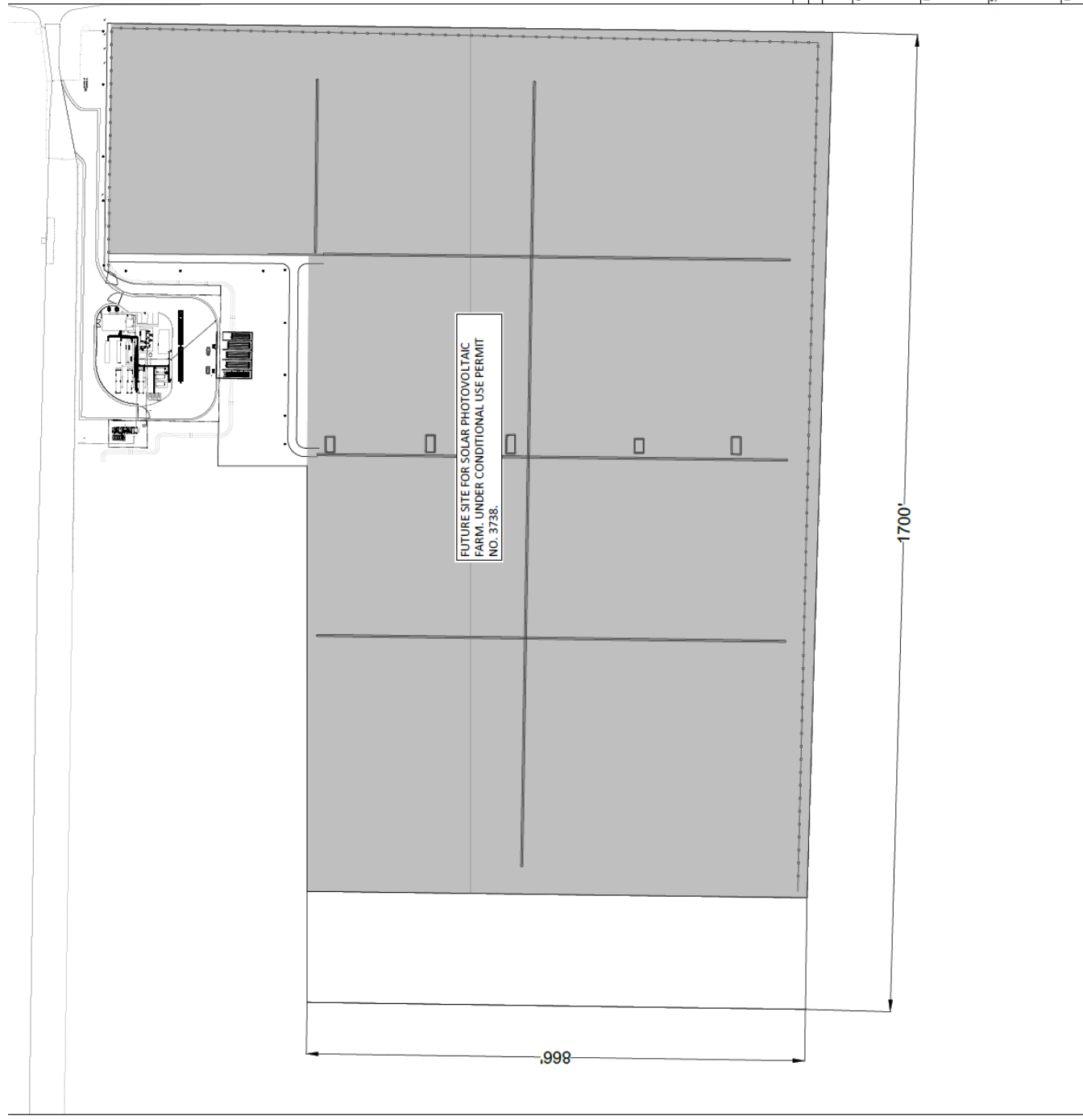
Findings	Description	Findings Met
1	Size and shape of parcel is adequate.	YES
2	Streets and highways are adequate for use.	YES
3	No adverse effect on neighborhood.	YES
4	General Plan consistency.	YES
5	Conditions necessary for public health, safety, and general welfare.	YES

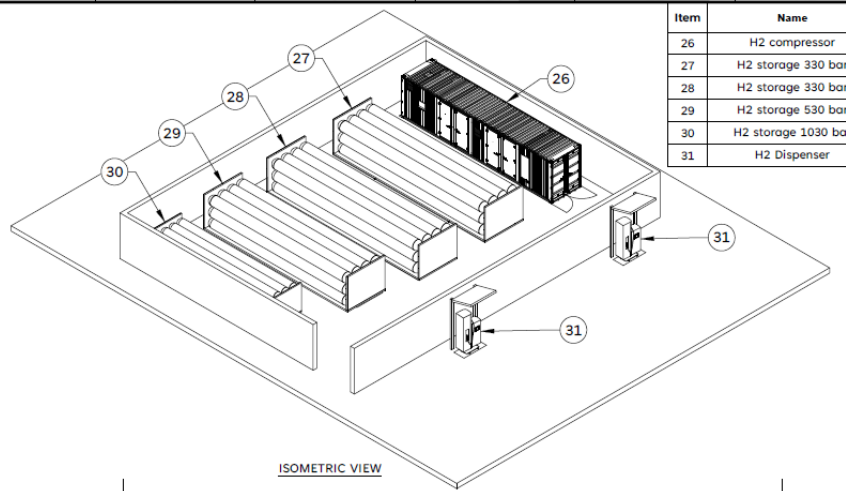
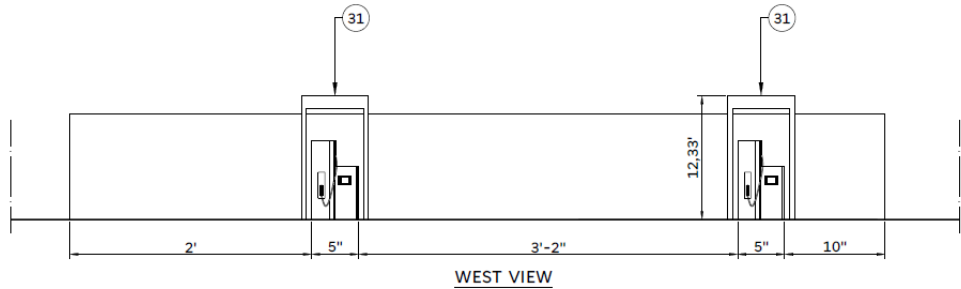


DEPARTMENT of PUBLIC WORKS and PLANNING DEVELOPMENT SERVICES & CAPITAL PROJECTS DIVISION

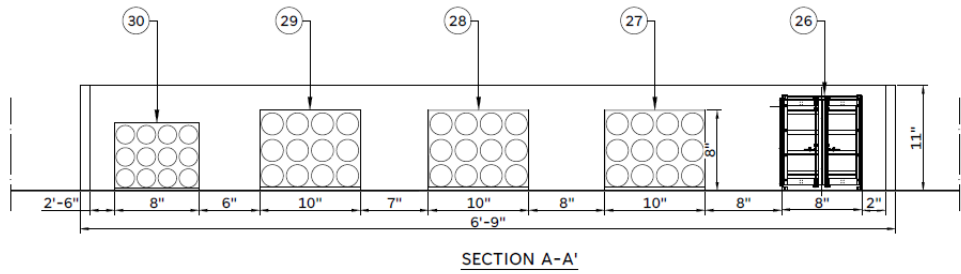
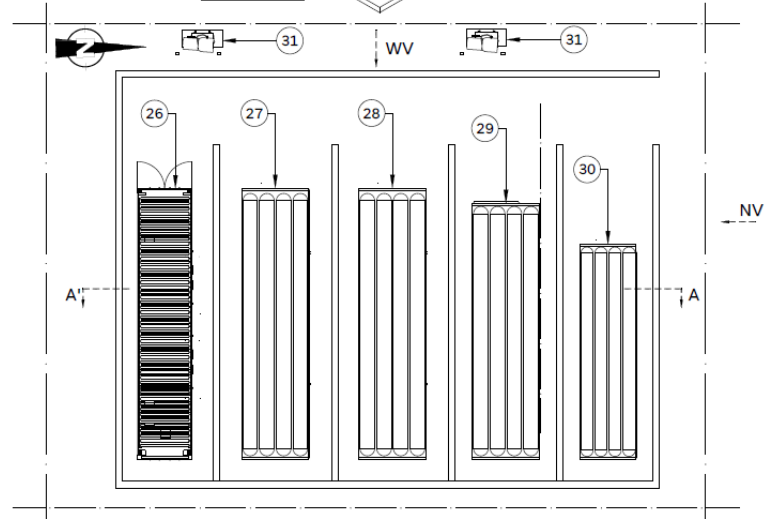
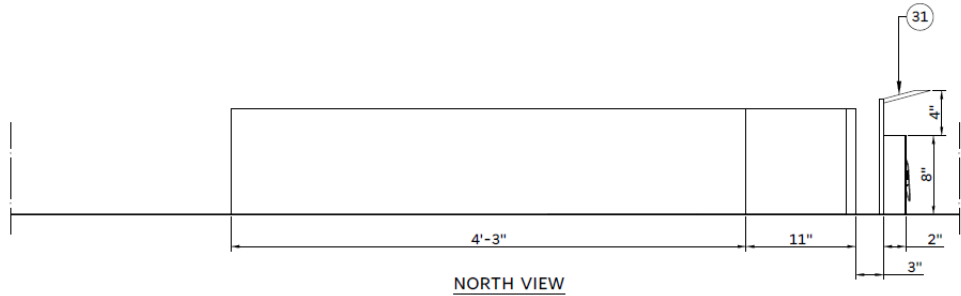
CUP 3775







Item	Name
26	H2 compressor
27	H2 storage 330 bar
28	H2 storage 330 bar
29	H2 storage 530 bar
30	H2 storage 1030 bar
31	H2 Dispenser



Rev.	Revision Date	Description	Purpose	Drawn	Reviewed	Approved
01	07/12/2023	General review and including PV plant		M/MR	JAC	MRZ
00	26/10/2023	For revision		M/MR	JAC	MRZ

Client:				
Contractor/Supplier:				
Project:		SoHyCal I		
Scale:		GENERAL LAYOUT		
1/32"=1'		Plan Arrangement with HRS		
Document Number:		SHC6-GAS-H2B2-HP-CS-0001		
Revision		01		