

Community Resource Centers

During Public Safety Power Shutoffs, Community Resource Centers provide resources and up-to-date information.

Customer Resources:

- Personal and medical device charging
- Mobile battery chargers
- ADA-accessible restroom
- Cooling/heating*
- Bottled water/snacks
- Seating
- Ice*



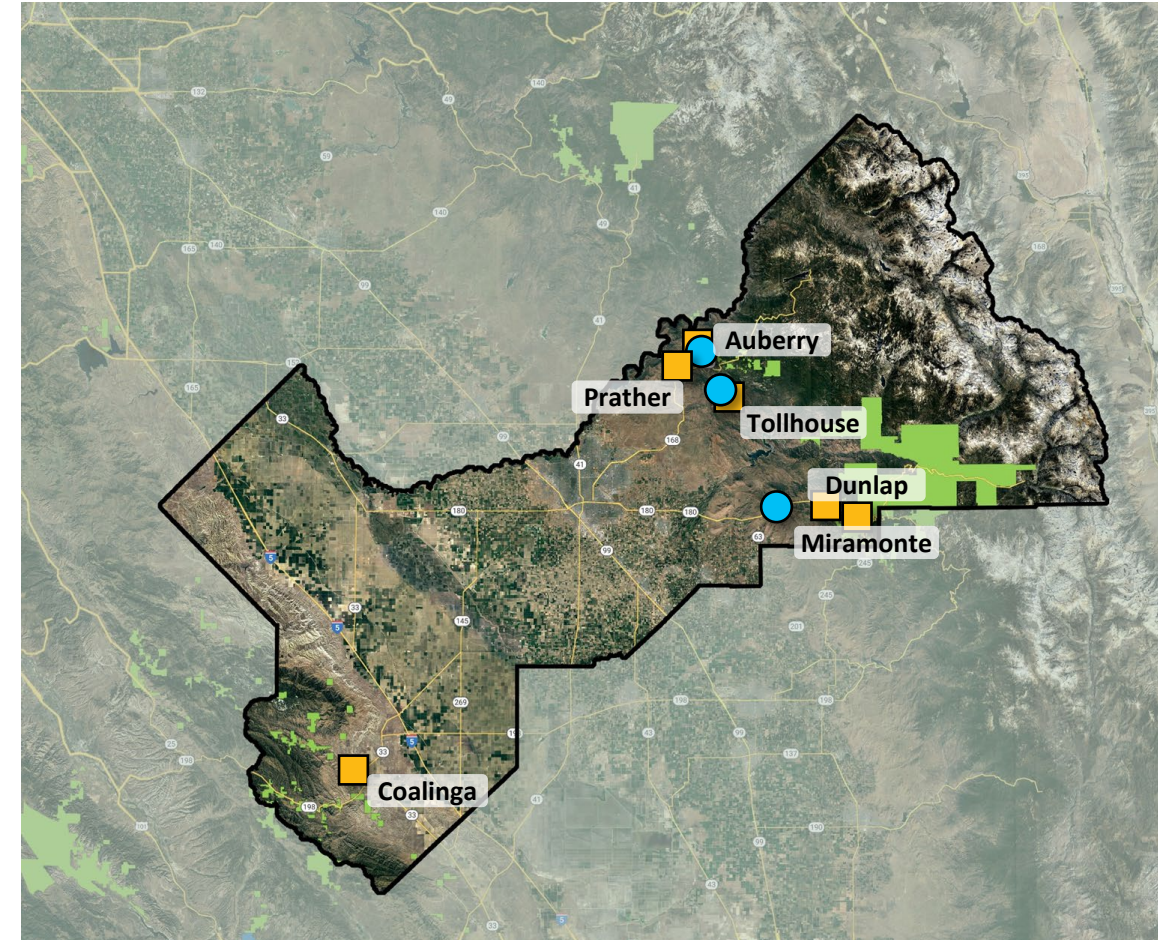
i To learn more, visit: pge.com/crc

**Indoor locations only*

Some of the measures included in this presentation are contemplated as additional precautionary measures intended to further reduce the risk of wildfires.

2024 Community Resource Center (CRC) Locations in Fresno County

Indoor Event-Ready		
1	Auberry	Auberry Library
2	Dunlap Area	Bear Mountain Library
3	Tollhouse	Sierra Oaks Senior Center
Outdoor Event-Ready		
4	Auberry	Auberry Community Church
5	Coalinga	Coalinga-Huron Sports Complex
6	Dunlap	Twin Valley's Restaurant
7	Miramonte	Central Sierra Chamber of Commerce
8	Prather	ACE Hardware
9	Tollhouse	Sierra Elementary



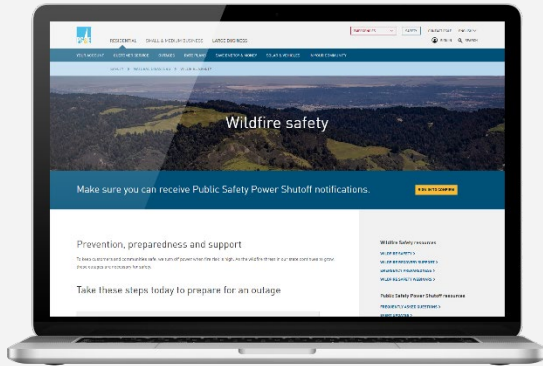
PSPS IMPACT: ■ 2021 – 2 Outages 2022 – No Outages 2023 – No Outages

CRC LEGEND: ● Indoor Event-Ready ■ Outdoor Event-Ready

Note: CRC locations are approximate. PSPS impact areas are approximate and may overlap.



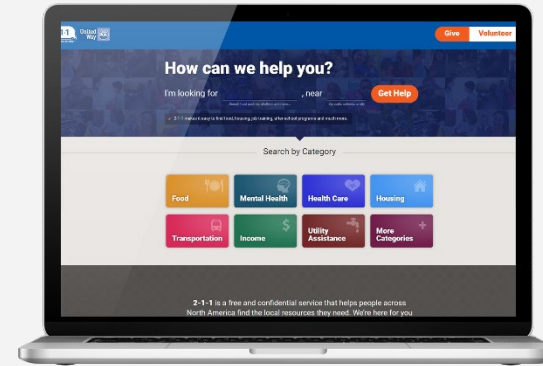
Customer Resources



Wildfire Safety


Information on wildfire prevention efforts

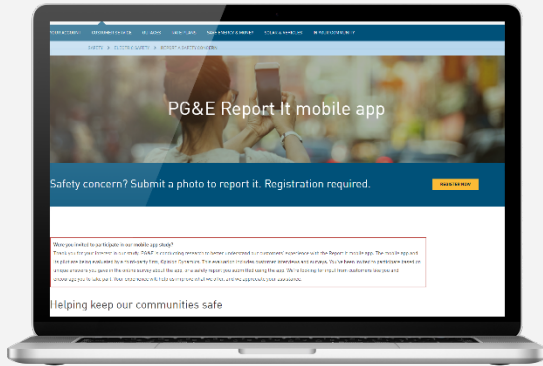
 pge.com/wildfiresafety



California Network of 211

Free and confidential support and resources via calls or texts to 211

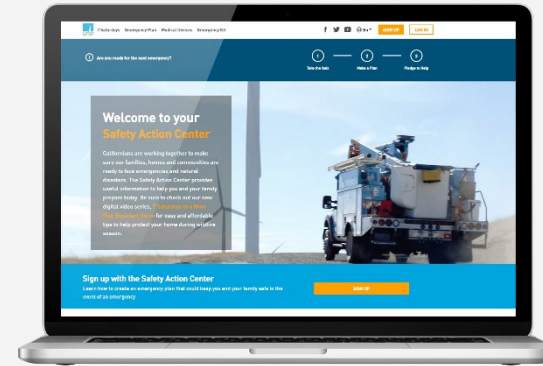
 211ca.org



Report It App

Submit photos of non-emergency potential safety concerns

 pge.com/reportit



Safety Action Center

Create an emergency safety plan to keep you and your family safe

 safetyactioncenter.pge.com

Dedicated wildfire safety contacts: Hotline: 1-866-743-6589 | Email: wildfiresafety@pge.com

Some of the measures included in this presentation are contemplated as additional precautionary measures intended to further reduce the risk of wildfires.