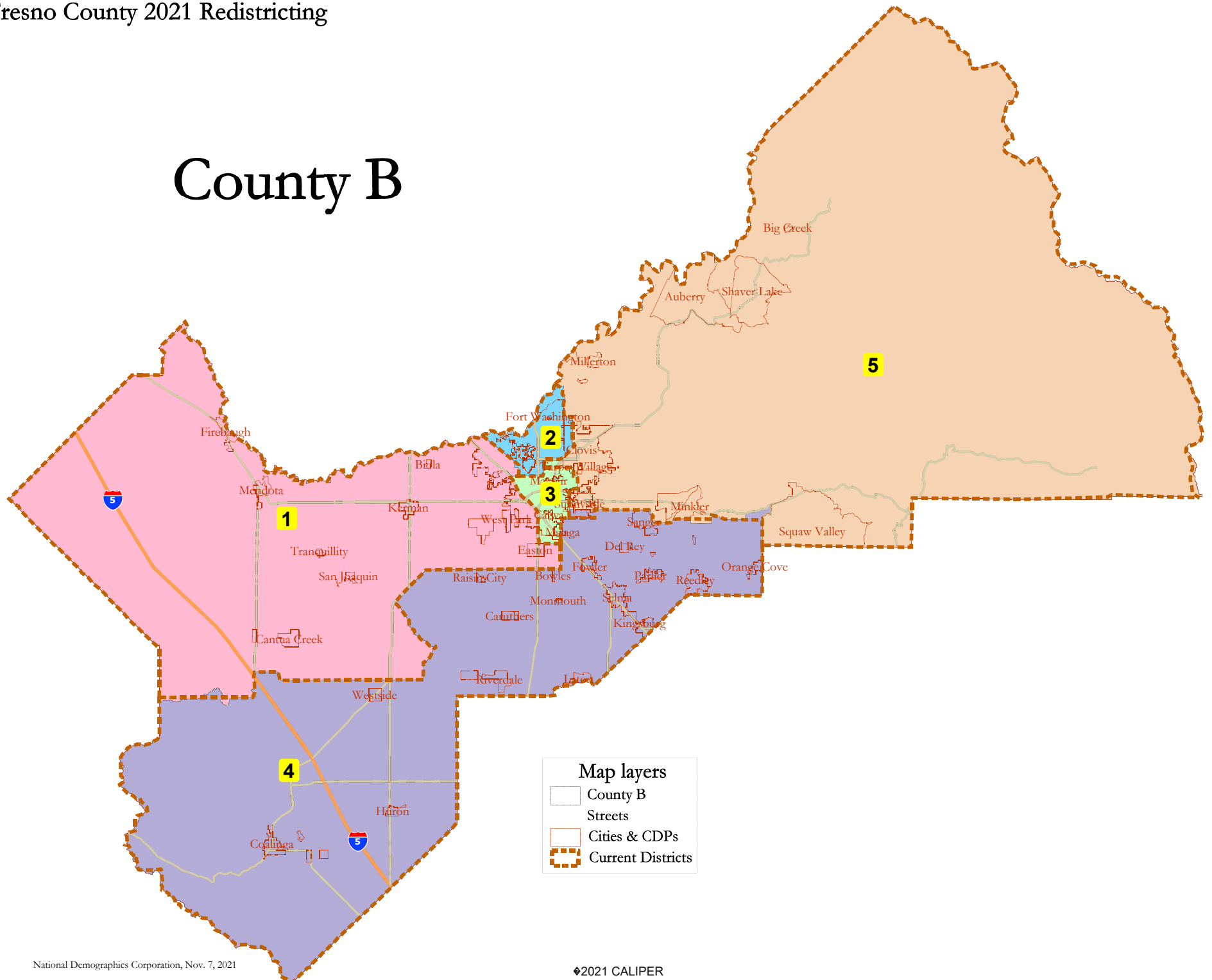


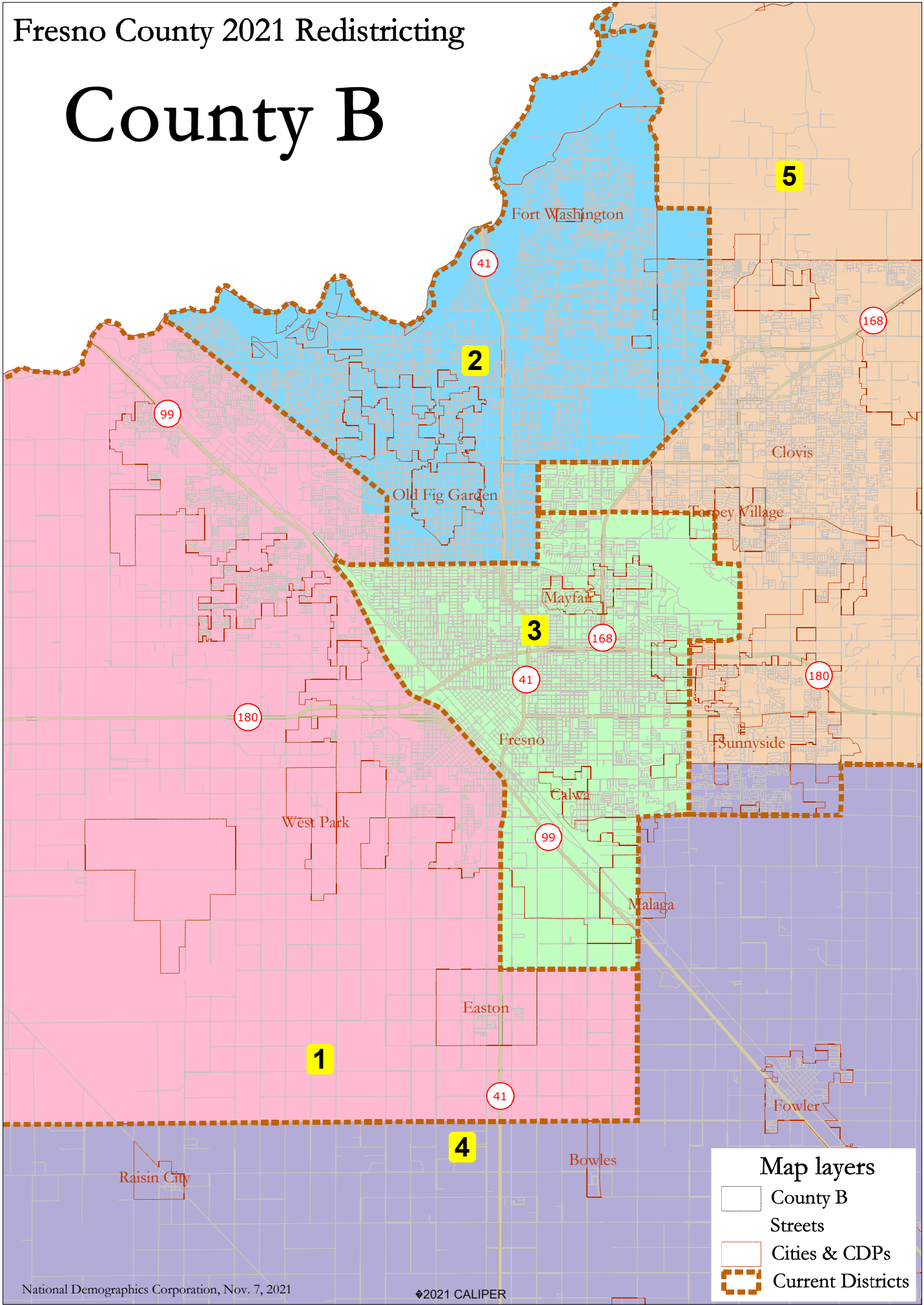
County B



Map layers

- County B
- Streets
- Cities & CDPs
- Current Districts

County B



Map layers

- County B
- Streets
- Cities & CDPs
- Current Districts

County B							
District		1	2	3	4	5	Total
	Total Pop	202,437	201,934	202,936	201,698	199,525	1,008,530
	Deviation from ideal	731	228	1,230	-8	-2,181	3,411
	% Deviation	0.36%	0.11%	0.61%	0.00%	-1.08%	1.69%
Total Pop	% Hisp	62.7%	34%	65%	74%	32%	54%
	% NH White	16%	45%	14%	16%	45%	27%
	% NH Black	8%	6%	7%	1%	3%	5%
	% Asian-American	12%	12%	12%	7%	16%	12%
Citizen Voting Age Pop	Total	102,743	144,476	111,091	102,174	124,562	585,047
	% Hisp	51%	27%	54%	62%	27%	42%
	% NH White	26%	56%	24%	27%	56%	40%
	% NH Black	11%	5%	8%	1%	3%	6%
	% Asian/Pac.Isl.	10%	10%	12%	8%	12%	11%
Voter Registration (Nov 2020)	Total	88,650	124,009	85,123	87,322	118,876	503,980
	% Latino est.	51%	26%	55%	62%	25%	41%
	% Spanish-Surnamed	47%	24%	51%	57%	23%	38%
	% Asian-Surnamed	6%	5%	3%	5%	5%	5%
	% Filipino-Surnamed	1%	1%	1%	1%	1%	1%
	% NH White est.	30%	64%	32%	32%	66%	48%
	% NH Black	14%	5%	11%	2%	3%	6%
Voter Turnout (Nov 2020)	Total	58,999	99,082	50,967	62,050	95,113	366,211
	% Latino est.	48%	23%	53%	57%	23%	37%
	% Spanish-Surnamed	45%	22%	49%	53%	22%	35%
	% Asian-Surnamed	6%	5%	3%	5%	5%	5%
	% Filipino-Surnamed	1%	1%	1%	1%	1%	1%
	% NH White est.	32%	66%	34%	36%	68%	52%
	% NH Black	12%	4%	10%	2%	3%	5%
Voter Turnout (Nov 2018)	Total	37,449	72,244	32,169	41,580	64,187	247,629
	% Latino est.	44%	20%	49%	52%	20%	33%
	% Spanish-Surnamed	42%	19%	46%	50%	19%	31%
	% Asian-Surnamed	5%	4%	2%	4%	4%	4%
	% Filipino-Surnamed	1%	1%	1%	1%	1%	1%
	% NH White est.	36%	70%	37%	40%	72%	56%
	% NH Black est.	12%	4%	9%	1%	2%	5%
ACS Pop. Est.	Total	198,962	203,291	195,431	199,410	184,176	981,270
Age	age0-19	34%	27%	32%	34%	30%	31%
	age20-60	52%	51%	54%	51%	50%	52%
	age60plus	13%	22%	14%	16%	19%	17%
Immigration	immigrants	27%	14%	23%	28%	14%	21%
	naturalized	33%	58%	38%	32%	63%	41%
Language spoken at home	english	45%	74%	44%	41%	73%	55%
	spanish	44%	15%	45%	54%	14%	35%
	asian-lang	5%	6%	9%	2%	8%	6%
	other lang	6%	5%	2%	3%	4%	4%
Language Fluency	Speaks Eng. "Less than Very Well"	27%	8%	23%	26%	8%	19%
Education (among those age 25+)	hs-grad	47%	43%	47%	45%	49%	46%
	bachelor	9%	23%	8%	9%	19%	14%
	graduatedegree	3%	14%	3%	4%	10%	7%
Child in Household	child-under18	47%	31%	41%	47%	38%	40%
Pct of Pop. Age 16+	employed	62%	63%	58%	61%	63%	61%
Household Income	income 0-25k	26%	17%	38%	25%	15%	24%
	income 25-50k	26%	19%	27%	27%	19%	23%
	income 50-75k	19%	18%	16%	17%	16%	17%
	income 75-200k	26%	38%	18%	29%	42%	31%
	income 200k-plus	2%	9%	1%	3%	8%	5%
Housing Stats	single family	76%	71%	60%	82%	83%	74%
	multi-family	24%	29%	40%	18%	17%	26%
	rented	51%	43%	64%	44%	32%	47%
	owned	49%	57%	36%	56%	68%	53%

Total population data from the 2020 Decennial Census.

Surname-based Voter Registration and Turnout data from the California Statewide Database.

Latino voter registration and turnout data are Spanish-surname counts adjusted using Census Population Department undercount estimates. NH White and NH Black registration and turnout counts estimated by NDC. Citizen Voting Age Pop., Age, Immigration, and other demographics from the 2015-2019 American Community Survey and Special Tabulation 5-year data.