

From: [Hatzune Aguilar](#)
To: [Fresno County 2021 Redistricting](#)
Cc: [Pedro Navarro Cruz](#); [Imelda Ramirez](#); [Pablo Rodriguez](#)
Subject: Fresno Inclusive Families Map
Date: Wednesday, September 29, 2021 6:23:29 PM
Attachments: [Fresno Inclusive Families Map - Justification 9 29 2021.pdf](#)
[Fresno Inclusive Families Map Sept 29, 2021.pdf](#)

CAUTION!!! - EXTERNAL EMAIL - THINK BEFORE YOU CLICK

To Whom It May Concern,

Please see the attached [Fresno Inclusive Families Map](#) and [Justification](#) on behalf of the Central Labor Council, Communities for a New California Education Fund, the Council on American-Islamic Relations (CAIR), the Fresno Metro Black Chamber of Commerce, Hmong Innovating Politics (HIP), and Jakara Movement (JM).

We are respectfully submitting these as public comment and for the Commission's consideration.

Thank you,
Hatzune

--

Hatzune Aguilar
Strategic Engagement Director
Communities for a New California

CNCEF [Website](#)
CNCEF [Facebook](#)
CNCEF [Instagram](#)

Fresno Inclusive Families Map Justification

The Central Labor Council, Communities for a New California Education Fund, the Council on American-Islamic Relations (CAIR), the Fresno Metro Black Chamber of Commerce, Hmong Innovating Politics (HIP), and Jakara Movement (JM) brought residents together to inform a revised map that would keep communities of interest whole, provide a more accurate balance of representation, and would ensure a smaller percentage of population deviation.

The Fresno Inclusive Families map changes the current North - South divide that currently gives greater advantage to District 2 and District 5. The North Fresno and North Clovis metro area is where the voting propensity is very high and voters do not vote in favor of uplifting working families. These two parts of Clovis and Fresno have more in common with each other than they do really with the rest of the county. District 2 and District 4 on the revised map balances the representation and gives more voice to the working families across the entire county.

Note: The map submitted was redrawn using Maptitude that accounts for 2020 Census data (PL 94-171 Redistricting Data).

District 1

District 1 includes such a large amount of land, because it encompasses so many low density rural areas of the county. This Western region of the county is currently divided by Districts 1 and 4. This map would bring the West part of the county together and would give more voice to residents living in the West and developing part of Fresno. District 1 is consistently an agricultural district. It also uplifts Fresno's most historical black part of town (Southwest) by keeping it together with the rest of Southwest Fresno and West of the 99 together instead of being divided into Districts 1 and 3 as it is currently.

Areas included in this District:

- *Mendota*
- *Firebaugh*
- *San Joaquin*
- *Tranquility*
- *Kerman*
- *Huron*
- *Coalinga*
- *Five Points*
- *Lanare*
- *Riverdale*
- *Raisin City*
- *Caruthers*
- *Biola*
- *City of Fresno COI Neighborhoods with similar interests*
 - *Highway City*

- *Herndon*
- *Central Unified*
- *Southwest Fresno (Westside)*

District 2

The Fresno Inclusive Families Map tells a more complete story of who is moving to Northwest Fresno and how there are complete 180-degree realities between neighborhoods in Northwest Fresno. In a quick [Zillow](#) search of sold homes in Figarden, Fresno, you will notice that some homes recently sold in the neighborhood Southeast of the Bullard & Marks intersection for an average of \$350k but in a bordering neighborhood closer to Van Ness Ave for an average of \$750k. Some even go above \$1 million. For example, families living in the neighborhood Southeast of the Bullard & Marks intersection work hard labor jobs, are more diverse, and overall live a completely different reality from the families more North of them and closer to or on Van Ness Ave.

Van Ness Ave is weirdly just East of Palm Ave, South of Shaw Ave and just East of Marks Ave, North of Shaw Ave. However, the same dichotomy previously mentioned exists South and North of Shaw Ave. This is why District 2 goes narrowly South until it meets the Herndon No. 39 Canal. The difference is most apparent when you drive through the part of Van Ness Ave that is commonly known as 'Christmas Tree Lane,' where it feels completely separated from the rest of the city.

Areas included in this district are:

- Old Figarden
- Figarden
- Woodward Park
- Clovis West High area
- Buchanan High area
- Clovis North High area
- All mountain and foothill communities

District 3

The Fresno Inclusive Families Map brings rural towns together into District 3 that include Latino communities of interest and are in closer proximity to Highway 99. This is a coalition district in that it includes an intersection of multiple communities of interest such as Latino, Asian, and Black families.

Additionally, a major element of this map is keeping as much of the historic Sunnyside community whole as a community of interest. Sunnyside High School is the largest high school in Fresno Unified and the most diverse in terms of its robust Hispanic/Latinx, Hmong, and Punjabi communities. The Sunnyside area also importantly includes both the Hmong and Punjabi communities, keeping them whole. It is important to understand that this area has become a vibrant and growing area for Hmong and Punjabi families and businesses as well.

District 3 areas include:

- *Orange Cove*
- *Sanger*
- *Parlier*
- *Selma*
- *Fowler*
- *Reedley*
- *Kingsburg*
- *Easton*
- *Laton*
- *Unincorporated Areas of Fresno*
 - *Calwa*
 - *Another note of interest is that in Malaga, students in this region go to Fowler Unified schools. In the current map, they are not in the same district and are unincorporated areas of the County. This revised map brings the communities of interest together.*

District 4

This district brings together neighborhoods in both Clovis and Fresno that have more in common with each other than the more affluent parts of Clovis and the City of Fresno.

- *City of Fresno Neighborhoods:*
 - *Pinedale*
 - *Central Fresno along the Blackstone corridor and East of Van Ness Ave. Ends south on Dakota*
 - *Mayfair District (County Island)*
 - *Apartments surrounding Fresno State*
 - *The more working class part of the Hoover High area*
 - *County Islands of East Central Fresno that are predominantly working class families of color*
- *Clovis Neighborhoods:*
 - *Tarpey Village*
 - *Clovis High area*

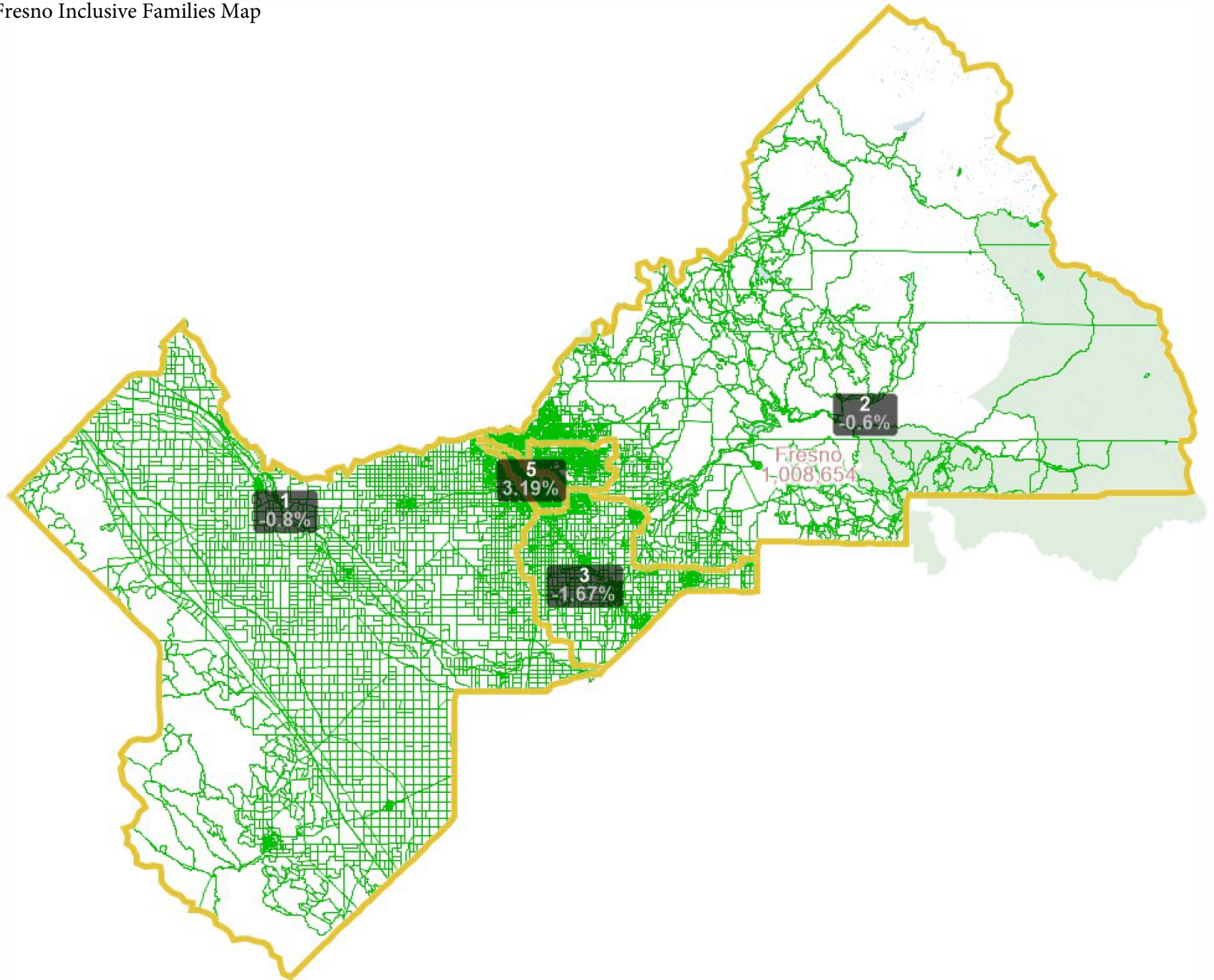
District 5

In this map, District 5 includes more working families in the Northwestern part of Fresno and extends into the more urban center of the all Fresno district (currently District 3). The Hmong community of interest is included in District 5.

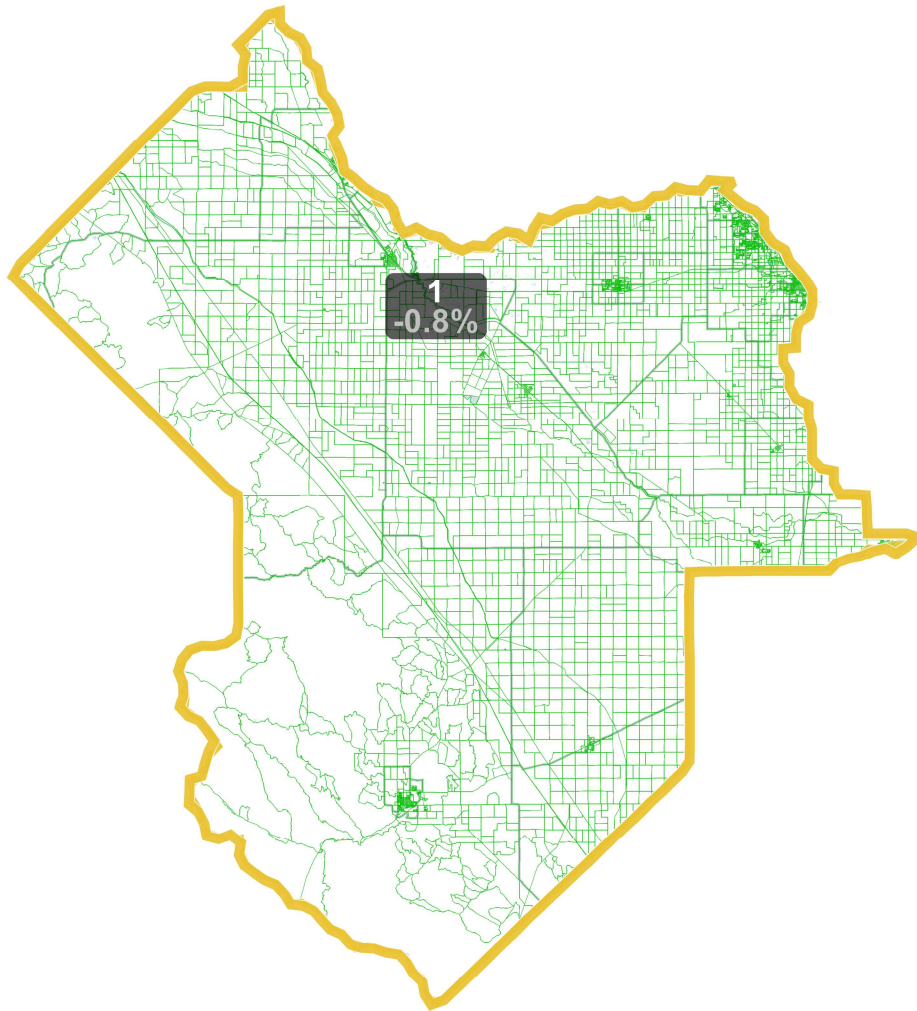
District 5 areas include:

- *Apartments between San Jose Ave and Barstow Ave and Brawley and Valentine.*
- *Lawless Elementary neighborhood*
- *Apartments Southeast of Marty Ave and Bullard Ave*
- *Neighborhood southeast of Bullard and Marks Ave*
- *Keeps Fresno City limits and Southeast Fresno together*

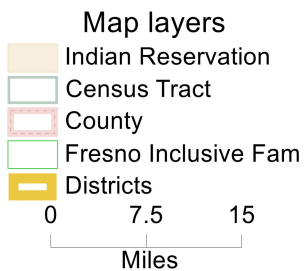
Fresno Inclusive Families Map



District: 1

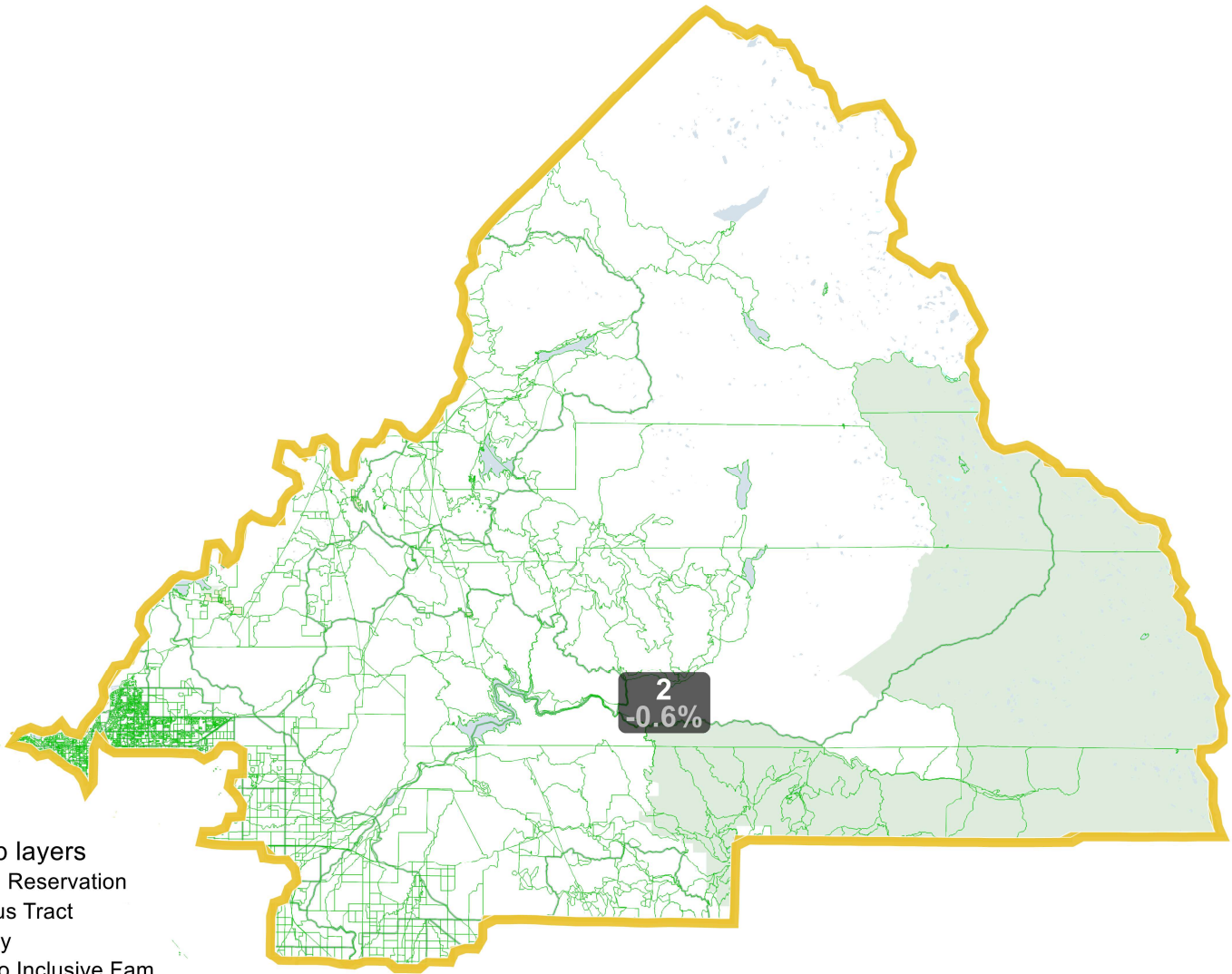


Field	Value
District	1
Population	200110
Deviation	-1,621
% Deviation	-0.8%
18+_Pop	139463
% 18+_Pop	69.69%
US citizens 18+ EST	62172
US citizens 18+ EST	31.07%
Hispanic Origin	135768
% Hispanic Origin	67.85%
H18+_Pop	89510
% H18+_Pop	64.18%
US citizens 18+ EST	33343
US citizens 18+ EST	53.63%
NH_Wht	28766
% NH_Wht	14.38%
NH18+_Wht	23849
% NH18+_Wht	17.1%
NH_BlK	11426
% NH_BlK	5.71%
NH18+_BlK	8311
% NH18+_BlK	5.96%
NH_Asn	18440
% NH_Asn	9.21%
NH18+_Asn	13906
% NH18+_Asn	9.97%
US citizens 18+ EST	4936
US citizens 18+ EST	7.94%
NH_Ind	1040
% NH_Ind	0.52%
NH18+_Ind	765
% NH18+_Ind	0.55%
NH_Hwn	174
% NH_Hwn	0.09%
NH18+_Hwn	139
% NH18+_Hwn	0.1%



©2021 CALIPER; ©2020 HERE

District: 2



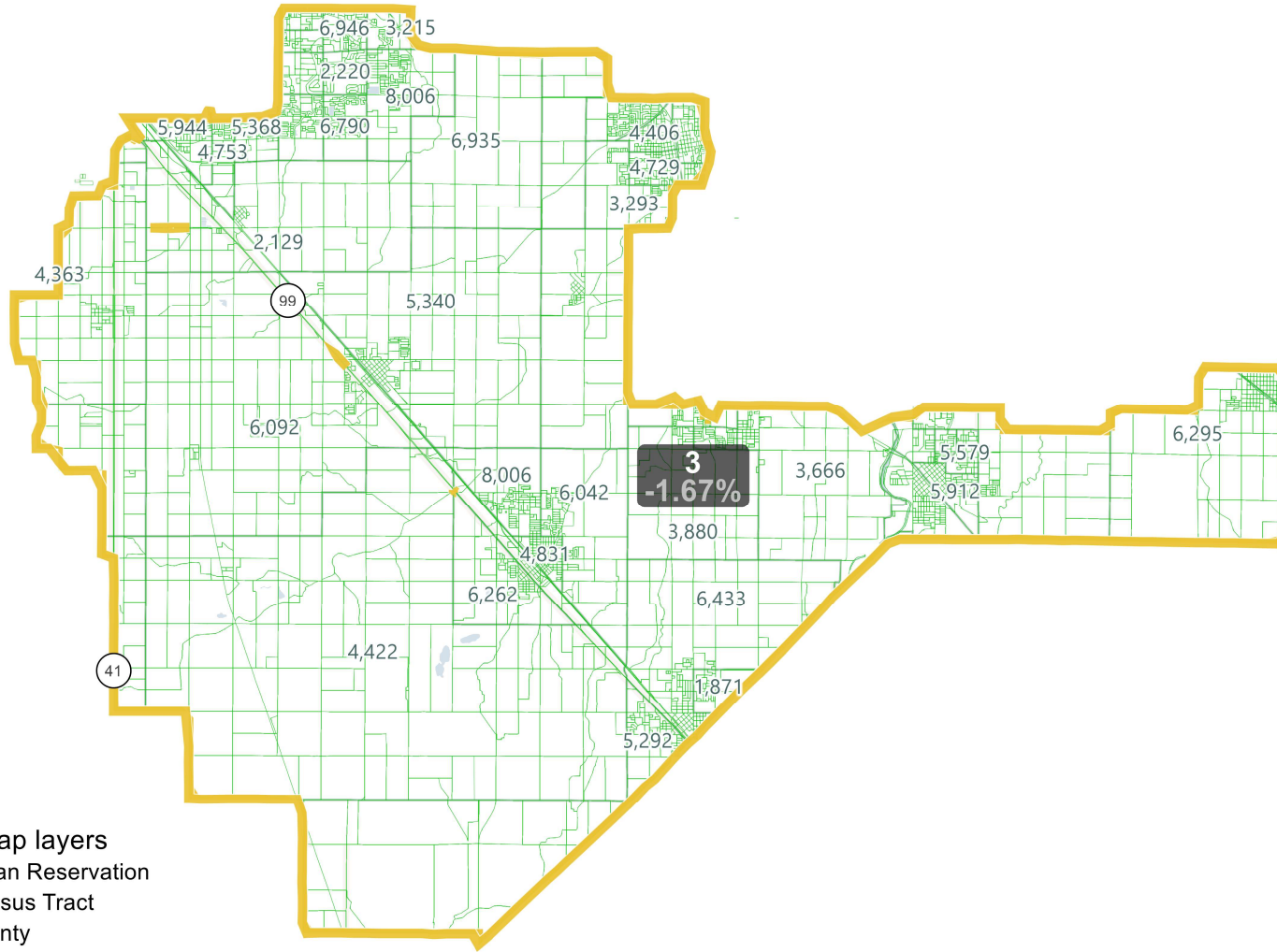
- Map layers**
- Indian Reservation
 - Census Tract
 - County
 - Fresno Inclusive Fam
 - Districts

0 7.5 15
Miles

©2021 CALIPER; ©2020 HERE

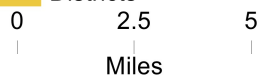
Field	Value
District	2
Population	200521
Deviation	-1,210
% Deviation	-0.6%
18+_Pop	155073
% 18+_Pop	77.34%
US citizens 18+ EST	108228
US citizens 18+ EST	53.97%
Hispanic Origin	52082
% Hispanic Origin	25.97%
H18+_Pop	35920
% H18+_Pop	23.16%
US citizens 18+ EST	23573
US citizens 18+ EST	21.78%
NH_Wht	108439
% NH_Wht	54.08%
NH18+_Wht	89248
% NH18+_Wht	57.55%
NH_BlK	5440
% NH_BlK	2.71%
NH18+_BlK	4236
% NH18+_BlK	2.73%
NH_Asn	22623
% NH_Asn	11.28%
NH18+_Asn	17794
% NH18+_Asn	11.47%
US citizens 18+ EST	11001
US citizens 18+ EST	10.16%
NH_Ind	1417
% NH_Ind	0.71%
NH18+_Ind	1061
% NH18+_Ind	0.68%
NH_Hwn	240
% NH_Hwn	0.12%
NH18+_Hwn	190

District: 3

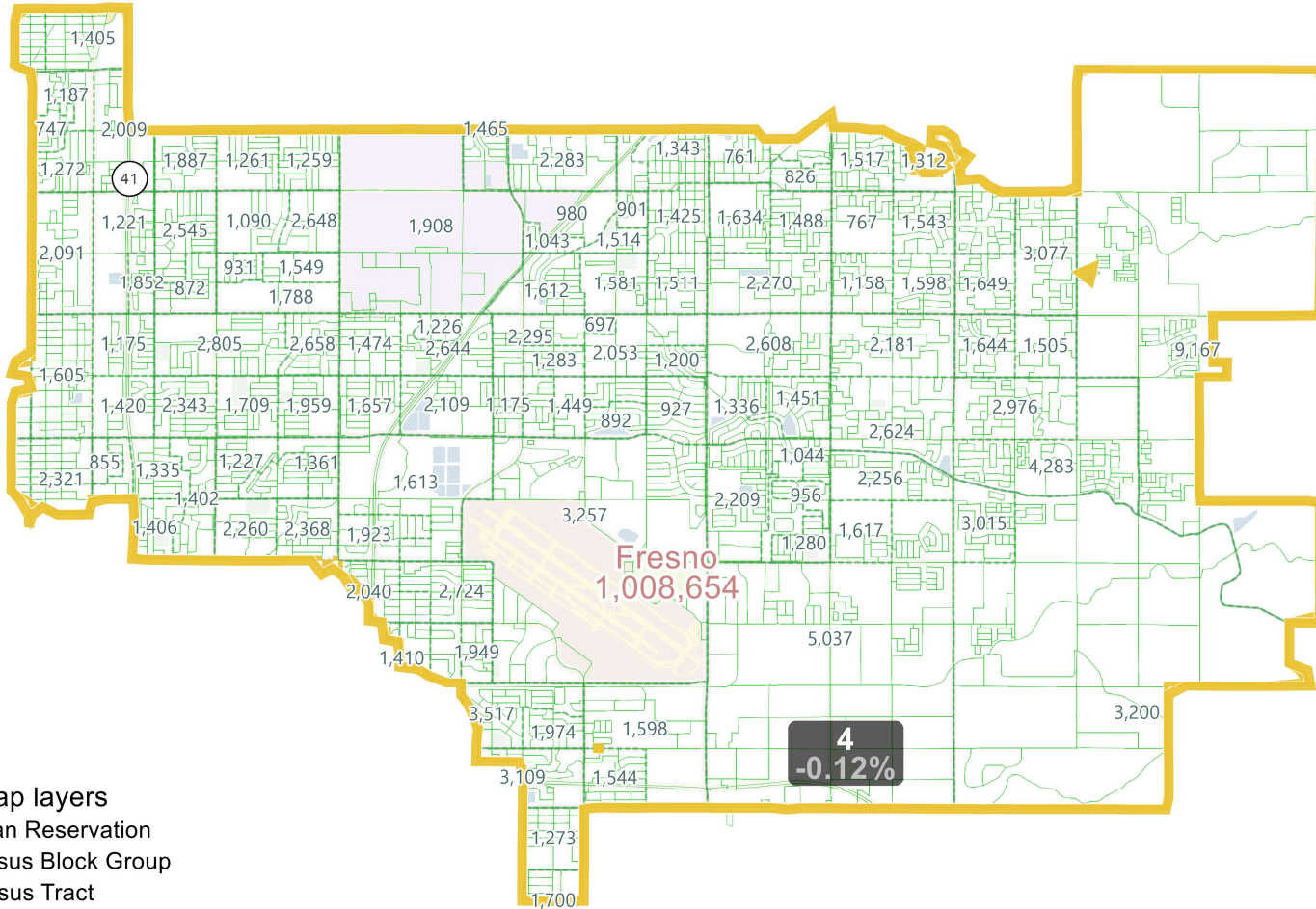


Field	Value
District	3
Population	198357
Deviation	-3,374
% Deviation	-1.67%
18+_Pop	139474
% 18+_Pop	70.31%
US citizens 18+ EST	70302
US citizens 18+ EST	35.44%
Hispanic Origin	139168
% Hispanic Origin	70.16%
H18+_Pop	93703
% H18+_Pop	67.18%
US citizens 18+ EST	41622
US citizens 18+ EST	59.2%
NH_Whit	30333
% NH_Whit	15.29%
NH18+_Whit	25137
% NH18+_Whit	18.02%
NH_Black	3261
% NH_Black	1.64%
NH18+_Black	2408
% NH18+_Black	1.73%
NH_Asn	20344
% NH_Asn	10.26%
NH18+_Asn	14670
% NH18+_Asn	10.52%
US citizens 18+ EST	7031
US citizens 18+ EST	10%
NH_Ind	632
% NH_Ind	0.32%
NH18+_Ind	457
% NH18+_Ind	0.33%
NH_Hwn	115
% NH_Hwn	0.06%
NH18+_Hwn	85

- Map layers**
- Indian Reservation
 - Census Tract
 - County
 - Fresno Inclusive Fam
 - Districts



District: 4



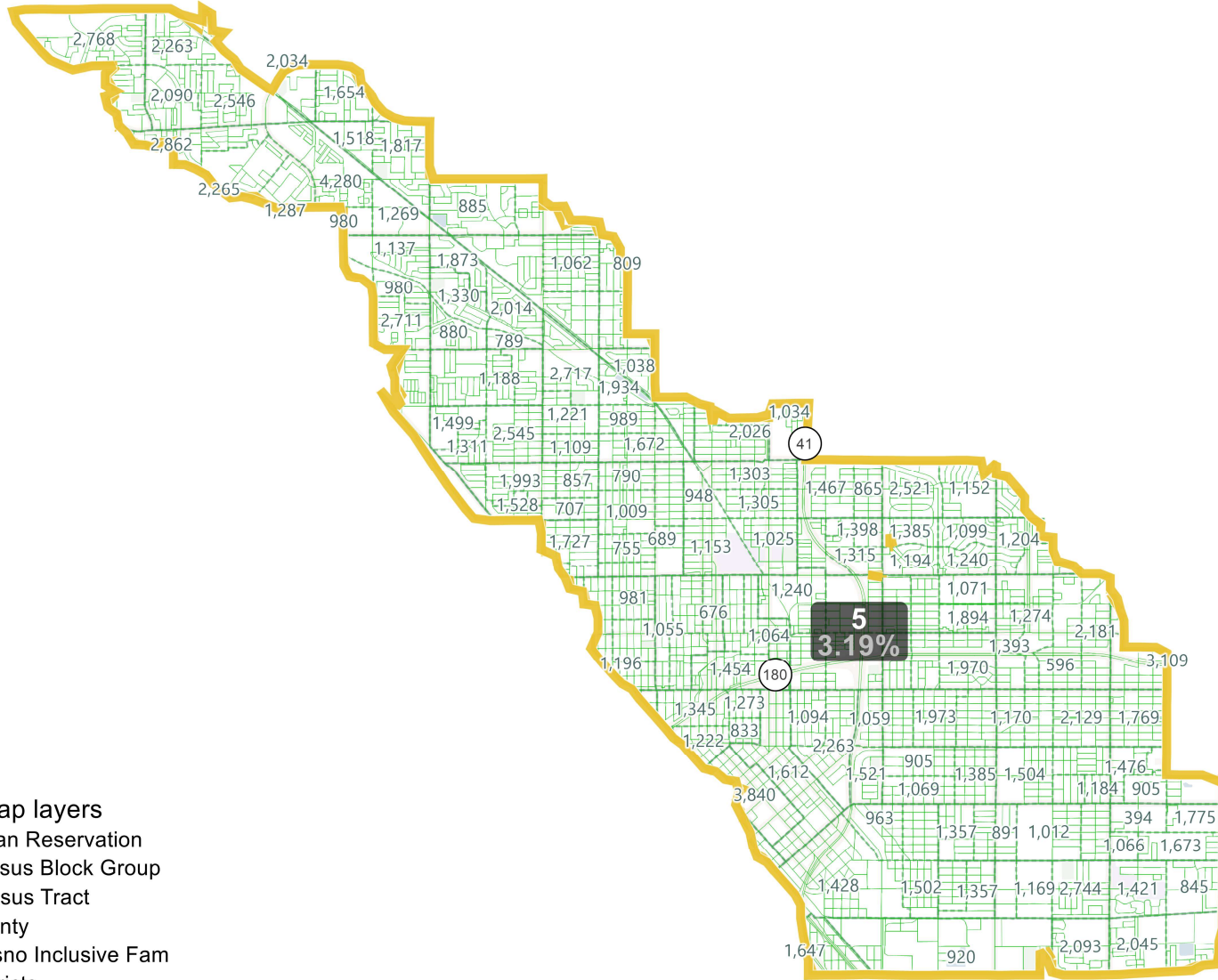
- Map layers**
- Indian Reservation
 - Census Block Group
 - Census Tract
 - County
 - Fresno Inclusive Fam
 - Districts

0 .75 1.5
Miles

©2021 CALIPER; ©2020 HERE

Field	Value
District	4
Population	201499
Deviation	-232
% Deviation	-0.12%
18+_Pop	148180
% 18+_Pop	73.54%
US citizens 18+ EST	115673
US citizens 18+ EST	57.41%
Hispanic Origin	85218
% Hispanic Origin	42.29%
H18+_Pop	57397
% H18+_Pop	38.73%
US citizens 18+ EST	41592
US citizens 18+ EST	35.96%
NH_Wht	67803
% NH_Wht	33.65%
NH18+_Wht	56318
% NH18+_Wht	38.01%
NH_BlK	9340
% NH_BlK	4.64%
NH18+_Blk	6813
% NH18+_Blk	4.6%
NH_Asn	28025
% NH_Asn	13.91%
NH18+_Asn	20225
% NH18+_Asn	13.65%
US citizens 18+ EST	13047
US citizens 18+ EST	11.28%
NH_Ind	1538
% NH_Ind	0.76%
NH18+_Ind	1160
% NH18+_Ind	0.78%
NH_Hwn	424
% NH_Hwn	0.21%
NH18+_Hwn	334

District: 5



Field	Value
District	5
Population	208167
Deviation	6,436
% Deviation	3.19%
18+_Pop	148055
% 18+_Pop	71.12%
US citizens 18+ EST	101715
US citizens 18+ EST	48.86%
Hispanic Origin	128507
% Hispanic Origin	61.73%
H18+_Pop	85673
% H18+_Pop	57.87%
US citizens 18+ EST	51235
US citizens 18+ EST	50.37%
NH_Wht	36548
% NH_Wht	17.56%
NH18+_Wht	31521
% NH18+_Wht	21.29%
NH_BlK	14828
% NH_BlK	7.12%
NH18+_BlK	10515
% NH18+_BlK	7.1%
NH_Asn	20233
% NH_Asn	9.72%
NH18+_Asn	14752
% NH18+_Asn	9.96%
US citizens 18+ EST	8724
US citizens 18+ EST	8.58%
NH_Ind	1447
% NH_Ind	0.7%
NH18+_Ind	1089
% NH18+_Ind	0.74%
NH_Hwn	280
% NH_Hwn	0.13%
NH18+_Hwn	220

