

A stylized outline of Fresno County, California, rendered in a light green color. It is positioned behind the main title text.

FRESNO COUNTY  
**REDISTRICTING 2021**

**County of Fresno**  
**Redistricting Workshop**

August 3 & 4, 2021

Ryder Todd Smith, President, Tripepi Smith  
Jeff Tilton, Senior Consultant, National Demographics Corporation

# Traducción al Español Disponible

---

**Meeting is Being Recorded**

# Introductions

---

# Today's Goals

---

*You Learn From the Experts*

*Experts Listen to You*

**Mapping Tools Training**

**You Leave Empowered to Give Effective Feedback**

# Today's Schedule

---

**AGENDA: Start at 6 p.m.; Close at 8 p.m.**

**Process, Rules and Goals**

**Neighborhoods/Communities of Interest**

**Mapping Tools**

**Next Steps**

# Redistricting Process

---

Step	Description
<b>Pre-Draft Public Hearing</b> August 12, 6:30 p.m. Health and Wellness Center	<ul style="list-style-type: none"><li>• Advisory Commission Public Hearing</li><li>• Held prior to release of draft maps</li><li>• Educate, solicit input on the communities in the Districts</li></ul>
<b>Census Data Release</b> Mid/Late August	<ul style="list-style-type: none"><li>• Census Bureau releases official 2020 Census population data</li></ul>
<b>California Data Release</b> Early October 2021	<ul style="list-style-type: none"><li>• California Statewide Database releases California's official 'prisoner-adjusted' 2020 redistricting data</li></ul>
<b>Engagement Workshops</b>	<ul style="list-style-type: none"><li>• July 14, 6-8 p.m. (Riverdale Unified School District)</li><li>• <b>August 3, 6-8 p.m. (Gaston Middle School)</b></li><li>• <b>August 4, 6-8 p.m. (Fresno High School)</b></li><li>• August 21, 9:30-11:30 a.m. (Woodward Park Regional Library)</li><li>• August 21, 2:30-4:30 p.m. (Clovis Veterans Memorial Center)</li></ul>

**Dates/locations subject to change**

# Redistricting Process (continued)

Step	Description
<b>Pre-Draft Public Hearing</b> October 21, 6:30 p.m. Health and Wellness Center	<ul style="list-style-type: none"> <li>• Advisory Commission Public Hearing</li> <li>• Recommend communities of interest, neighborhoods for Board of Supervisors</li> <li>• Recommend draft maps for Board of Supervisors</li> <li>• Deadline to submit maps: October 20, 2021, 5 p.m.</li> </ul>
<b>Draft Map Public Hearing</b> November 2, 1 p.m. Board Chambers	<ul style="list-style-type: none"> <li>• Board of Supervisors Public Hearing</li> <li>• Discuss, revise the draft maps</li> <li>• Discuss the election sequence</li> <li>• Deadline to submit maps: October 20, 2021, 5 p.m.</li> <li>• Deadline for maps to be posted to website: October 27, 2021, 5 p.m.</li> </ul>
<b>Draft Map Public Hearing</b> November 16, 1 p.m. Board Chambers	<ul style="list-style-type: none"> <li>• Board of Supervisors Public Hearing</li> <li>• Select final map and election sequence</li> <li>• Deadline to submit maps: November 2, 2021, 5 p.m.</li> <li>• Deadline for maps to be posted to website: November 9, 2021, 5 p.m.</li> </ul>

**Dates/locations subject to change**

# Redistricting Rules and Goals

## 1. Federal Laws

- Equal Population
- Federal Voting Rights Act
- No Racial Gerrymandering



## 2. California Criteria for Counties

1. Geographically contiguous
2. Undivided neighborhoods and “communities of interest” (Socio-economic geographic areas that should be kept together)
3. Cities and CDPs
4. Easily identifiable boundaries
5. Compact (Do not bypass one group of people to get to a more distant group of people)

### Prohibited:

“Shall not favor or discriminate against a political party.”

## 3. Other Traditional Redistricting Principles

- Minimize voters shifted to different election years
- Respect voters’ choices / continuity in office
- Future population growth
- Preserving the core of existing districts



# Defining Neighborhoods

---

**1<sup>st</sup> Question: What is your neighborhood?**

**2<sup>nd</sup> Question: What are its geographic boundaries?**

**Examples of physical features defining a neighborhood boundary:**

- Natural neighborhood dividing lines, such as highway or major roads, rivers, canals and/or hills
- Areas around parks or schools
- Other neighborhood landmarks

**In the absence of public testimony, planning records and other similar documents may provide definition.**



# Beyond Neighborhoods: Defining Communities of Interest

---

## 1<sup>st</sup> Question: What defines your community?

- Geographic Area, plus
- Shared issue or characteristic
  - Shared social or economic interest
  - Impacted by county policies
- Tell us “your community’s story”

## 2<sup>nd</sup> Question: Would this community benefit from being “included within a single district for purposes of its effective and fair representation”?

- Or would it benefit more from having multiple representatives?

Definitions of Communities of Interest may not include relationships with political parties, incumbents, or political candidates.

# Possible Neighborhoods / Communities

---

**From July 14, 2021, public workshop:**

- Riverdale
- Lanare
- East of CA 41/West of CA 41
  - Type of crops; no trees
  - Size of farms and corporations
  - Family farms
  - Housing type; access to resources
- Unincorporated communities
  - Lack access to water
  - Farmworker community

Data collected from the August 2021 public workshops will be shared at the October 2021 Public Hearing.

Data collected from all public workshops will be posted on the redistricting website.

# Q&A With The Experts

---

# Neighbor Chats

---

- ❑ 15 minutes to review maps, think about communities of interest, talk with your fellow community members
- ❑ Experts will be available to answer your questions
- ❑ After 15 minutes, we will swing by each group and ask you to share your thoughts on communities of interest
- ❑ Your thoughts and ideas will become part of the record and be recorded / written down

# Break

---

# Share Your Thoughts

HOME COMMISSION MEETINGS REDISTRICTING RESOURCES

 FRESNO COUNTY  
**REDISTRICTING 2021**

The County of Fresno is currently initiating the 2021 Redistricting process.

Applications for membership on the advisory commission to the Board were accepted from April 27, 2021 through May 14, 2021, and the commission was selected by the Board of Supervisors on May 25, 2021.

For more information, please contact [FresnoCounty2021Redistricting@fresnocountyca.gov](mailto:FresnoCounty2021Redistricting@fresnocountyca.gov).

**Website:** [www.co.fresno.ca.us/resources/redistricting](http://www.co.fresno.ca.us/resources/redistricting)

**Phone:** 559.600.1221 | **Email:** [FresnoCounty2021Redistricting@fresnocountyca.gov](mailto:FresnoCounty2021Redistricting@fresnocountyca.gov)

# Public Mapping and Map Review Tools

---

- **Different tools for different purposes**
- **Different tools for different levels of technical skill and interest**
  - Simple “review draft maps” tool
  - Easy-to-use “Draw your neighborhood” tool
  - Paper- and Excel-based simple “Draw a draft map” tools
  - Powerful, data-rich “Draw a draft map” tool

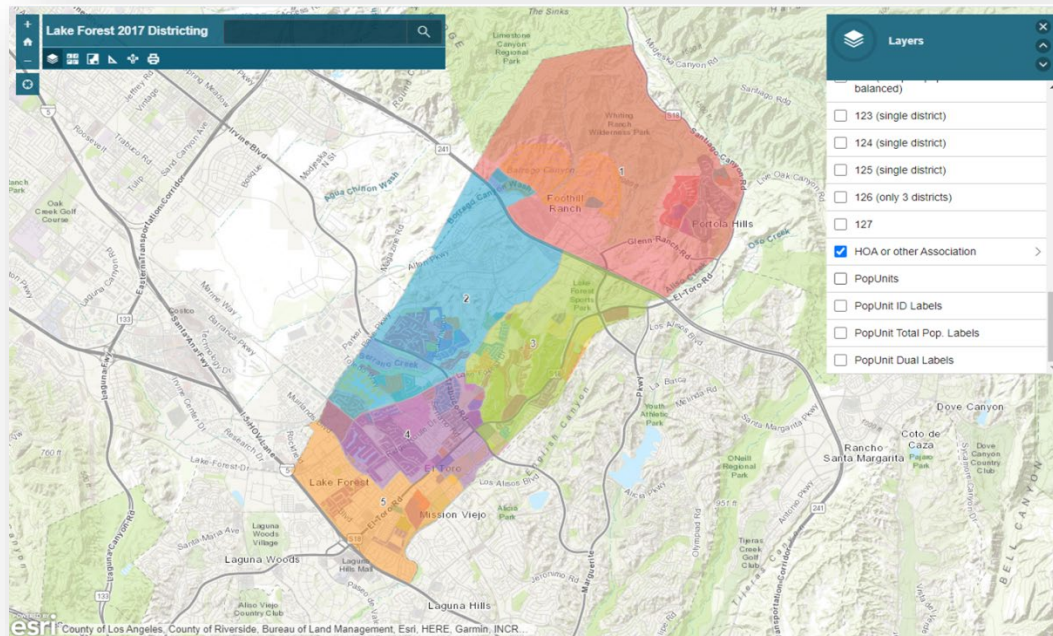
Whether you use the powerful (but complicated) online mapping tool, Excel, the paper kit, or just draw on a napkin, we welcome your maps!



# Simple Map Review Tool

## Online Interactive Review Map

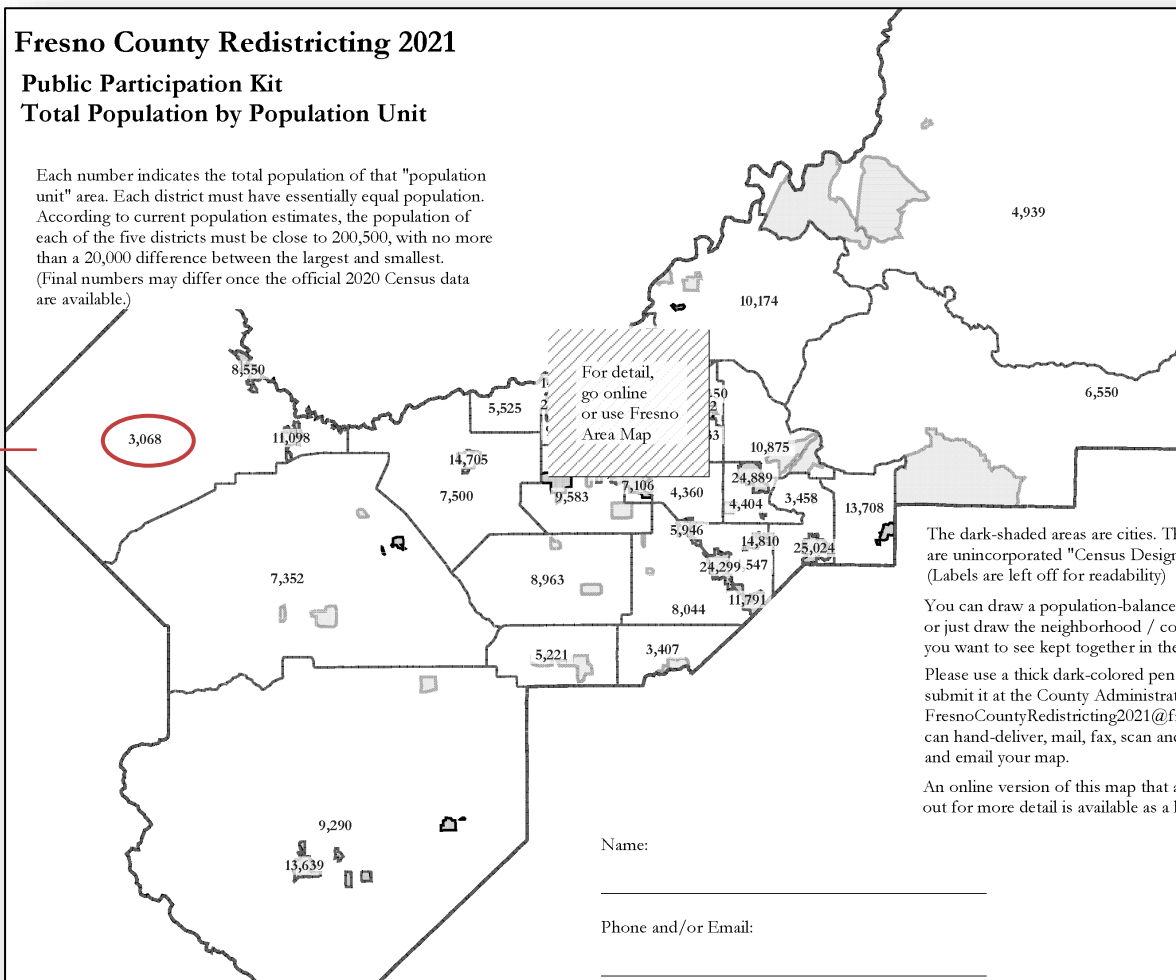
- ESRI's "ArcGIS Online" – similar to Google Maps in ease of use
- Used to review, analyze and compare maps, not to create them
- Includes overlays of "community of interest" and other Story Map data
- [Sample map from Lake Forest](#)



# Simple Map Drawing Tool

## Paper “Public Participation Kit”

- For those without internet access or who prefer paper
- Total Population Counts only – no demographic numbers
- Geographic units would be tracts, CDP’s and smaller cities



# Simple Map Drawing Tool + Excel Supplement

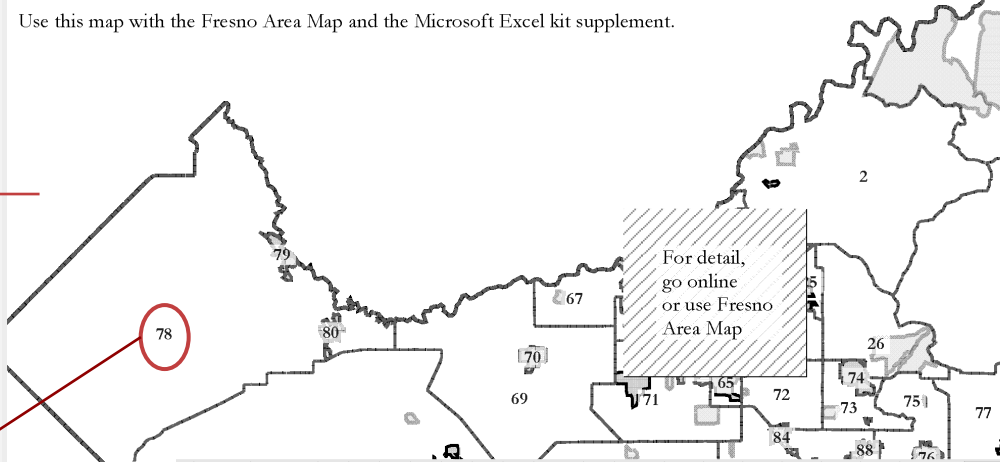
## “Public Participation Kit”

- For those who know Excel and do not wish to use online tools
- Adds CVAP data
- Excel does the math
- Geographic units would be tracts, CDP’s and smaller cities

## Fresno County Redistricting 2021

### Public Participation Kit Population Unit ID Numbers

Use this map with the Fresno Area Map and the Microsoft Excel kit supplement.



AutoSave On Lake Forest 5-district Kit\_ENG.xlsx

File Home Insert Page Layout Formulas Data Review View Help Acrobat

Clipboard Font Alignment Number

Dist	Unit	Tot. Pop.	Hisp	Whit	Blk	NH	Asn	total	Hisp	Whit	Blk	Asn	tot	Hisp	Whit	Blk	Asn	tot	latino	asn	fil	tot
1	1	1,216	642	557	18	15	873	397	442	12	831	390	441	0	574	195	7	3	245	63		
2	2	2,367	1,028	1,053	43	96	1,784	741	899	74	1,915	730	1,140	0	45	1,299	435	14	7	555	140	
3	3	1,643	768	278	42	25	1,036	741	236	15	400	235	145	0	20	505	286	3	4	161	73	
4	4	1,768	734	855	62	84	1,272	464	685	62	1,231	461	639	19	111	1,022	366	11	11	391	89	
5	5	2,001	209	1,655	14	79	1,639	144	1,392	64	1,511	88	1,337	12	38	1,776	146	46	7	1,089	67	
6	6	612	56	499	4	39	517	37	440	26	471	22	423	3	15	525	38	15	2	337	18	
7	7	1,753	1,180	501	70	10	1,945	767	494	10	780	335	440	0	0	777	378	7	4	241	70	

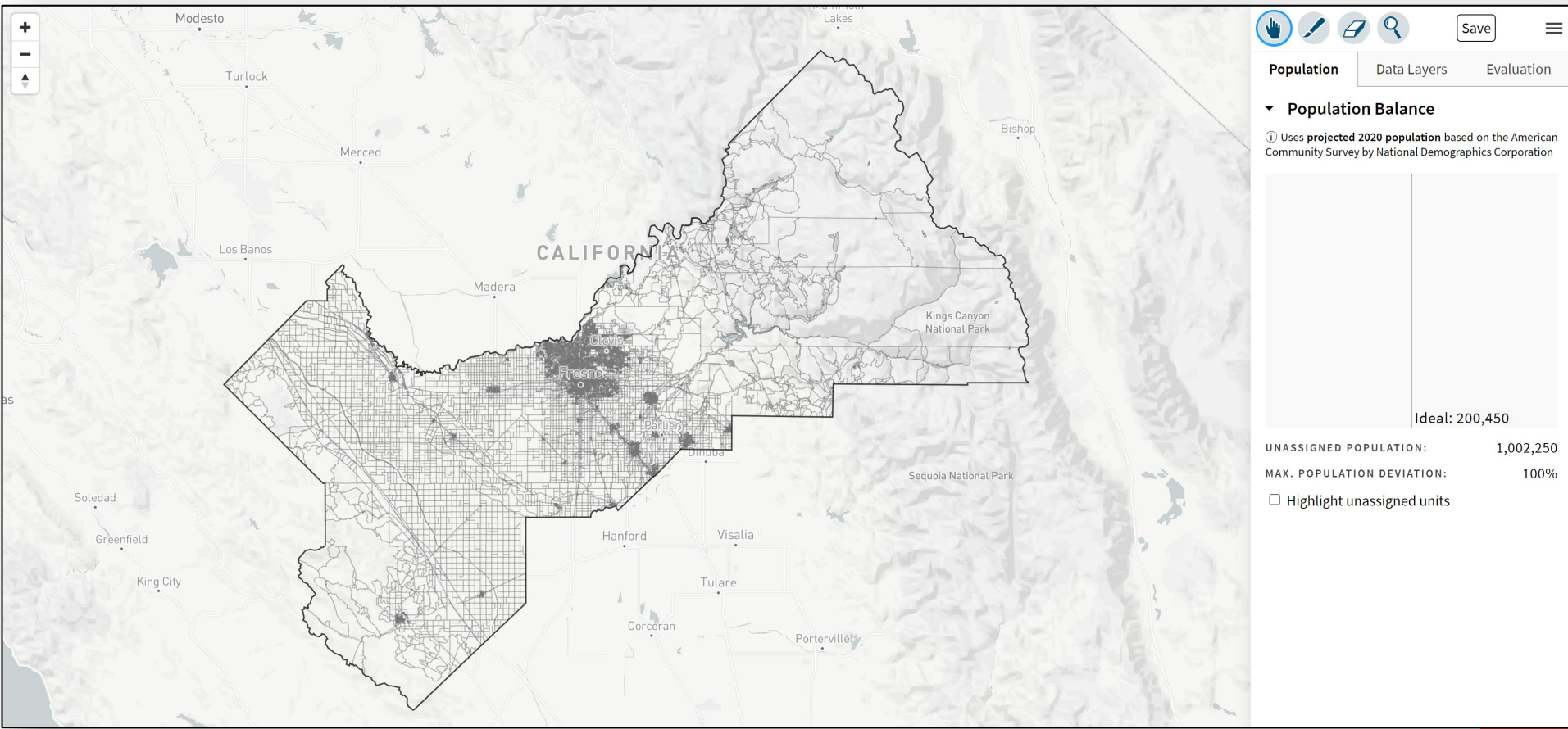
Sums by District Assigned		Ideal population: 15,314																	
City of San Buenaventura 2017 Public Participation Kit		enter your name here																	
Group	Category	Counts							Unassigned	Total	Percentages							Unassigned	Total
		1	2	3	4	5	6	7			1	2	3	4	5	6	7		
Total Population	Tot. Pop.	0	0	0	0	0	0	0	107,197	107,197	0	-100%	-100%	-100%	-100%	-100%	-100%	-100%	0.00%
	Deviation from Ideal	-15,314	-15,314	-15,314	-15,314	-15,314	-15,314	-15,314	0	0	0	-100%	-100%	-100%	-100%	-100%	-100%	-100%	0.00%
	Hispanic	0	0	0	0	0	0	0	34,182	34,182	0	#DIV/0!	#DIV/0!	#DIV/0!	#DIV/0!	#DIV/0!	#DIV/0!	#DIV/0!	32%
	NH White	0	0	0	0	0	0	0	64,294	64,294	0	#DIV/0!	#DIV/0!	#DIV/0!	#DIV/0!	#DIV/0!	#DIV/0!	#DIV/0!	60%
Total CVAP	Total CVAP	0	0	0	0	0	0	0	83,090	83,090	0	#DIV/0!	#DIV/0!	#DIV/0!	#DIV/0!	#DIV/0!	#DIV/0!	#DIV/0!	54%
	Hispanic	0	0	0	0	0	0	0	22,928	22,928	0	#DIV/0!	#DIV/0!	#DIV/0!	#DIV/0!	#DIV/0!	#DIV/0!	#DIV/0!	28%
	NH White	0	0	0	0	0	0	0	53,857	53,857	0	#DIV/0!	#DIV/0!	#DIV/0!	#DIV/0!	#DIV/0!	#DIV/0!	#DIV/0!	65%
	NH Black	0	0	0	0	0	0	0	3,401	3,401	0	#DIV/0!	#DIV/0!	#DIV/0!	#DIV/0!	#DIV/0!	#DIV/0!	#DIV/0!	2%
Total Reg.	Total Reg.	0	0	0	0	0	0	0	77,063	77,063	0	#DIV/0!	#DIV/0!	#DIV/0!	#DIV/0!	#DIV/0!	#DIV/0!	#DIV/0!	50%
	Hispanic	0	0	0	0	0	0	0	18,936	18,936	0	#DIV/0!	#DIV/0!	#DIV/0!	#DIV/0!	#DIV/0!	#DIV/0!	#DIV/0!	24%
	NH White	0	0	0	0	0	0	0	52,843	52,843	0	#DIV/0!	#DIV/0!	#DIV/0!	#DIV/0!	#DIV/0!	#DIV/0!	#DIV/0!	69%
	NH Black	0	0	0	0	0	0	0	2,630	2,630	0	#DIV/0!	#DIV/0!	#DIV/0!	#DIV/0!	#DIV/0!	#DIV/0!	#DIV/0!	2%
Total Votes	Total Votes	0	0	0	0	0	0	0	13,574	13,574	0	#DIV/0!	#DIV/0!	#DIV/0!	#DIV/0!	#DIV/0!	#DIV/0!	#DIV/0!	8%
	Latino	0	0	0	0	0	0	0	1,100	1,100	0	#DIV/0!	#DIV/0!	#DIV/0!	#DIV/0!	#DIV/0!	#DIV/0!	#DIV/0!	8%
	Asian-American	0	0	0	0	0	0	0	463	463	0	#DIV/0!	#DIV/0!	#DIV/0!	#DIV/0!	#DIV/0!	#DIV/0!	#DIV/0!	3%
	Filipino	0	0	0	0	0	0	0	30,448	30,448	0	#DIV/0!	#DIV/0!	#DIV/0!	#DIV/0!	#DIV/0!	#DIV/0!	#DIV/0!	23%

Submitter's Comments about the plan:  
 I think this map makes sense because ...

# DistrictR

## “Draw Your Community of Interest” focus

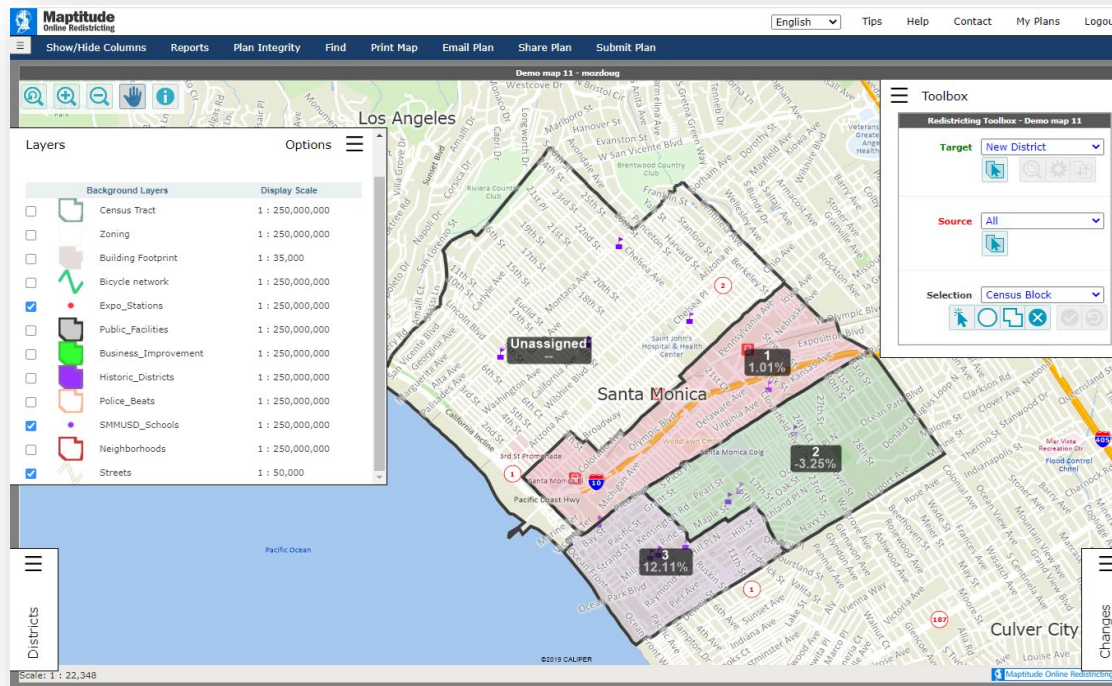
- **districtR.org**
- Also includes simple district-mapping tool; Only available in English
- Similar external options: [Representable.org](http://Representable.org), [DrawMyCACommunity.org](http://DrawMyCACommunity.org)



# Caliper's “Maptitude Online Redistricting”

## Full Database, Powerful Online Mapping Tool

- Powerful, common, data-rich online tool
- Six language options: English, Spanish, Portuguese, Vietnamese, Mandarin and Korean
- [Quick Start Guide](#)



# Share Your Thoughts

HOME COMMISSION MEETINGS REDISTRICTING RESOURCES

 FRESNO COUNTY  
**REDISTRICTING 2021**

The County of Fresno is currently initiating the 2021 Redistricting process.

Applications for membership on the advisory commission to the Board were accepted from April 27, 2021 through May 14, 2021, and the commission was selected by the Board of Supervisors on May 25, 2021.

For more information, please contact [FresnoCounty2021Redistricting@fresnocountyca.gov](mailto:FresnoCounty2021Redistricting@fresnocountyca.gov).

**Website:** [www.co.fresno.ca.us/resources/redistricting](http://www.co.fresno.ca.us/resources/redistricting)

**Phone:** 559.600.1221 | **Email:** [FresnoCounty2021Redistricting@fresnocountyca.gov](mailto:FresnoCounty2021Redistricting@fresnocountyca.gov)