

A stylized outline of Fresno County, with the top portion in yellow and the bottom portion in green.

# FRESNO COUNTY REDISTRICTING 2021

## County of Fresno Redistricting Workshop

August 21, 2021

Ryder Todd Smith, President, Tripepi Smith  
Jeff Tilton, Senior Consultant, National Demographics Corporation

# Traducción al Español Disponible

---

**Meeting is Being Recorded**

# Introductions

---

# Today's Goals

---

*You Learn From the Experts*

*Experts Listen to You*

**Mapping Tools Training**

**You Leave Empowered to Give Effective Feedback**

# Today's "Doubleheader" Schedule

---

**AGENDA: 9:30-11:30 a.m./2:30-4:30 p.m.**

**Process, Rules and Goals**

**Neighborhoods/Communities of Interest**

**Mapping Tools**

**Next Steps**

# Redistricting Process

---

Step	Description
<b>Pre-Draft Public Hearing</b> August 12, 6:30 p.m. Health and Wellness Center	<ul style="list-style-type: none"> <li>• Advisory Commission Public Hearing</li> <li>• Held prior to release of draft maps</li> <li>• Educate, solicit input on the communities in the Districts</li> </ul>
<b>Census Data Release</b> Mid/Late August	<ul style="list-style-type: none"> <li>• Census Bureau releases official 2020 Census population data</li> </ul>
<b>California Data Release</b> Early October 2021	<ul style="list-style-type: none"> <li>• California Statewide Database releases California's official 'prisoner-adjusted' 2020 redistricting data</li> </ul>
<b>Engagement Workshops</b>	<ul style="list-style-type: none"> <li>• July 14, 6-8 p.m. (Riverdale Unified School District)</li> <li>• August 3, 6-8 p.m. (Gaston Middle School)</li> <li>• August 4, 6-8 p.m. (Fresno High School)</li> <li>• <b>August 21, 9:30-11:30 a.m. (Woodward Park Regional Library)</b></li> <li>• <b>August 21, 2:30-4:30 p.m. (Clovis Veterans Memorial Center)</b></li> </ul>

**Dates/locations subject to change**

# Redistricting Process (continued)

Step	Description
<b>Pre-Draft Public Hearing</b> October 21, 6:30 p.m. Health and Wellness Center	<ul style="list-style-type: none"> <li>• Advisory Commission Public Hearing</li> <li>• Recommend communities of interest, neighborhoods to Board of Supervisors</li> <li>• Recommend draft maps to Board of Supervisors</li> <li>• Deadline to submit maps: October 20, 2021, 5 p.m.</li> </ul>
<b>Draft Map Public Hearing</b> November 2, 1 p.m. Board Chambers	<ul style="list-style-type: none"> <li>• Board of Supervisors Public Hearing</li> <li>• Discuss, revise the draft maps</li> <li>• Discuss the election sequence</li> <li>• Deadline for maps to be posted to website: October 27, 2021, 5 p.m.</li> </ul>
<b>Draft Map Public Hearing</b> November 16, 1 p.m. Board Chambers	<ul style="list-style-type: none"> <li>• Board of Supervisors Public Hearing</li> <li>• Select final map and election sequence</li> <li>• Deadline to submit maps: November 2, 2021, 5 p.m.</li> <li>• Deadline for maps to be posted to website: November 9, 2021, 5 p.m.</li> </ul>

**Dates/locations subject to change**

# Redistricting Rules and Goals

## 1. Federal Laws

- Equal Population
- Federal Voting Rights Act
- No Racial Gerrymandering



## 2. California Criteria for Counties

1. Geographically contiguous
2. Undivided neighborhoods and “communities of interest” (Socio-economic geographic areas that should be kept together)
3. Cities and CDPs
4. Easily identifiable boundaries
5. Compact (Do not bypass one group of people to get to a more distant group of people)

### Prohibited:

“Shall not favor or discriminate against a political party.”

## 3. Other Traditional Redistricting Principles

- Minimize voters shifted to different election years
- Respect voters’ choices / continuity in office
- Future population growth
- Preserving the core of existing districts



# Estimated Data: Current Districts

District		1	2	3	4	5	Total
2020	Est. Total	208,107	200,571	181,655	185,849	226,092	1,002,275
	Change from 2010	7,652	116	-18,800	-14,606	25,637	44,437
	% Deviation	3.82%	0.06%	-9.38%	-7.29%	12.79%	22.17%
2010 Total Pop	% Hisp	59%	28%	63%	74%	29%	50%
	% NH White	20%	54%	17%	20%	51%	33%
	% NH Black	9%	5%	6%	1%	4%	5%
	Asian-American	9%	11%	12%	4%	13%	10%
Citizen Voting Age Pop	Total	104,783	142,411	101,045	94,372	142,417	585,028
	% Hisp	51%	27%	55%	63%	28%	42%
	% NH White	26%	57%	23%	28%	53%	40%
	% NH Black	11%	5%	8%	1%	4%	6%
	Asian/Pacific	10%	10%	12%	5%	14%	10%
Voter Registration (Nov 2020)	Total	89,964	122,413	78,025	79,101	134,052	503,555
	% Latino est	52%	26%	58%	66%	27%	42%
	Spanish-Surnames	47%	24%	52%	60%	25%	38%
	Asian-Surnames	6%	5%	3%	4%	6%	5%
	Hispanic-Surnames	1%	1%	1%	1%	1%	1%
	NH White est	26%	62%	26%	26%	60%	44%
	% NH Black	14%	5%	11%	2%	5%	7%
Voter Turnout (Nov 2018)	Total	38,036	71,511	28,988	38,200	69,868	246,603
	% Latino est	46%	21%	53%	57%	22%	34%
	Spanish-Surnames	42%	18%	48%	51%	20%	31%
	Asian-Surnames	5%	4%	2%	4%	4%	4%
	Hispanic-Surnames	1%	1%	1%	1%	1%	1%
	NH White est	35%	70%	35%	37%	69%	55%
	% NH Black	12%	4%	9%	1%	4%	5%
Voter Turnout (Nov 2020)	Total	59,868	97,950	46,131	56,164	105,774	365,887
	% Latino est	50%	24%	56%	61%	26%	38%
	Spanish-Surnames	45%	22%	50%	55%	23%	35%
	Asian-Surnames	6%	5%	3%	4%	5%	5%
	Hispanic-Surnames	1%	1%	1%	1%	1%	1%
	NH White est	29%	64%	28%	30%	63%	48%
NH Black est	13%	5%	11%	2%	5%	7%	

ACS Pop. Est	Total	201,742	200,572	181,674	185,737	211,545	981,270	
Age	age0-19	34%	27%	33%	33%	30%	31%	
	age20-60	52%	51%	53%	50%	51%	52%	
	age60plus	14%	22%	14%	16%	19%	17%	
Immigration	immigrants	27%	14%	24%	28%	15%	21%	
	naturalized	33%	58%	37%	29%	62%	41%	
Language spoken at home	english	45%	74%	43%	40%	71%	55%	
	spanish	44%	15%	46%	56%	16%	35%	
	asian-lang	5%	6%	9%	1%	9%	6%	
	other lang	6%	5%	2%	3%	5%	4%	
Language Fluency	Speaks Eng "Less than Very well"	27%	8%	24%	27%	9%	19%	
	Education (among those age 25+)	hs-grad	47%	43%	46%	45%	49%	46%
Child in Household	child-under18	47%	31%	42%	47%	38%	40%	
	Pct of Pop. Age 16+	employed	62%	63%	58%	60%	63%	61%
	Household Income	income 0-25k	26%	17%	39%	26%	16%	24%
income 25-50k		26%	18%	26%	27%	19%	23%	
income 50-75k		19%	18%	16%	17%	17%	17%	
income 75-200k		26%	39%	17%	27%	41%	31%	
income 200k-plus		2%	9%	1%	3%	7%	5%	
Housing Status	single family	76%	71%	60%	81%	82%	74%	
	multi-family	24%	29%	40%	19%	18%	26%	
	rented	51%	43%	65%	46%	33%	47%	
owned	49%	57%	35%	54%	67%	53%		

# Defining Neighborhoods

---

**1<sup>st</sup> Question: What is your neighborhood?**

**2<sup>nd</sup> Question: What are its geographic boundaries?**

**Examples of physical features defining a neighborhood boundary:**

- Natural neighborhood dividing lines, such as highway or major roads, rivers, canals and/or hills
- Areas around parks or schools
- Other neighborhood landmarks

**In the absence of public testimony, planning records and other similar documents may provide definition.**



# Beyond Neighborhoods: Defining Communities of Interest

---

## 1<sup>st</sup> Question: What defines your community?

- Geographic Area, plus
- Shared issue or characteristic
  - Shared social or economic interest
  - Impacted by county policies
- Tell us “your community’s story”

## 2<sup>nd</sup> Question: Would this community benefit from being “included within a single district for purposes of its effective and fair representation”?

- Or would it benefit more from having multiple representatives?

Definitions of Communities of Interest may not include relationships with political parties, incumbents, or political candidates.

# Possible Neighborhoods / Communities

---

**From July 14, 2021, public workshop:**

- Riverdale
- Lanare
- East of CA 41/West of CA 41
  - Type of crops; no trees
  - Size of farms and corporations
  - Family farms
  - Housing type; access to resources
- Unincorporated communities
  - Lack access to water
  - Farmworker community

Data collected from the August 2021 public workshops will be shared at the October 2021 Public Hearing.

Data collected from all public workshops will be posted on the redistricting website.

**Submissions edited for clarity and brevity**

# Possible Neighborhoods / Communities

---

## From August 3, 2021, public workshop:

- Parlier
- Southeast Fresno (water quality)
- Parlier (sewer systems/storm water systems)
- Clovis to the foothills (east)
- West Fresno, west of 99 (new construction)
- Old West, historically recognized
- African American communities
- Sanger (infrastructure investments)
- Water services (how accessible to residents)
- Rural communities (high Latino populations)
- Foothills (remain unified w/ services)
- East vs. Urban

Submissions edited for clarity and brevity

# Possible Neighborhoods / Communities

---

## From August 4, 2021, public workshop:

- Food deserts, lack access to food quality options
- Shopping areas
- Communities without transportation
- Accessibility to jobs
- Loma Vista – existing and future growth
  - West:
  - East: McCall
- Heritage Grove
  - Willow, Sheppard, Copper
- Parlier:
  - water quality issues, access to water for low income communities, water rates going up
  - Transportation issues, traffic around school zones
  - Policy issues
- Communities centered around schools, enrollment boundaries for each of the schools

Submissions edited for clarity and brevity

# Possible Neighborhoods / Communities

---

## From August 4, 2021, public workshop (continued):

- Sunnyside
- Community Planning areas
  - Tower District
  - Southwest Fresno
- East side Fresno, Kings Canyon
- Pinedale
- Districts according to Police Departments
  - Public safety response times
  - County of Fresno as well as police within limits of City
- County Islands within city limits
- Mayfair / “Lake Don Pedro”
- Muscatel / West Central Fresno
- Central District
- Language spoken
- Historic Districts
- Historic Tracts
  - GIS data on Fresno website
- Canals, railways, freeways
  - Recognizable boundaries
- Renters, homeowners
- Historically redlined communities

Submissions edited for clarity and brevity

# Q&A With Your Hosts

---



# Neighbor Chats

---

- ❑ 15 minutes to review maps, thinks about communities of interest, talk with your fellow community members
- ❑ Experts will be available to answer your questions
- ❑ After 10-15 minutes, we will swing by each group and ask you to share your thoughts on communities of interest
- ❑ Your thoughts and ideas will become part of the record and be recorded / written down

# Break

---

# Share Your Thoughts

HOME COMMISSION MEETINGS REDISTRICTING RESOURCES

 FRESNO COUNTY  
**REDISTRICTING 2021**

The County of Fresno is currently initiating the 2021 Redistricting process.

Applications for membership on the advisory commission to the Board were accepted from April 27, 2021 through May 14, 2021, and the commission was selected by the Board of Supervisors on May 25, 2021.

For more information, please contact [FresnoCounty2021Redistricting@fresnocountyca.gov](mailto:FresnoCounty2021Redistricting@fresnocountyca.gov).

**Website:** [www.co.fresno.ca.us/resources/redistricting](http://www.co.fresno.ca.us/resources/redistricting)

**Phone:** 559.600.1221 | **Email:** [FresnoCounty2021Redistricting@fresnocountyca.gov](mailto:FresnoCounty2021Redistricting@fresnocountyca.gov)

# Public Mapping and Map Review Tools

---

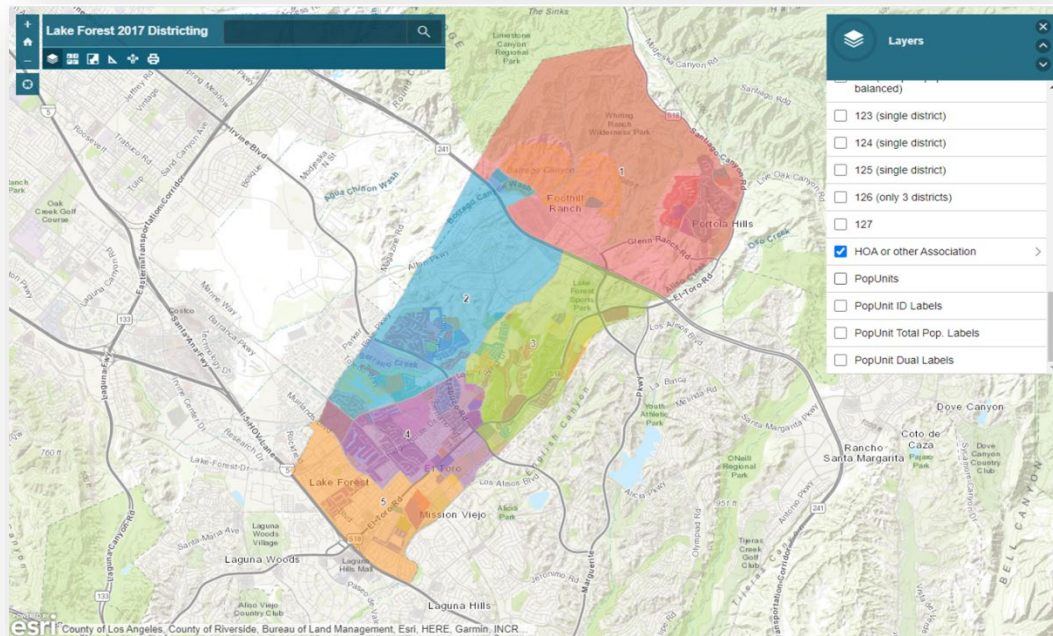
- **Different tools for different purposes**
- **Different tools for different levels of technical skill and interest**
  - Simple “review draft maps” tool
  - Easy-to-use “Draw your neighborhood” tool
  - Paper- and Excel-based simple “Draw a draft map” tools
  - Powerful, data-rich “Draw a draft map” tool

Whether you use the powerful (but complicated) online mapping tool, Excel, the paper kit, or just draw on a napkin, we welcome your maps!

# Simple Map Review Tool

## Online Interactive Review Map

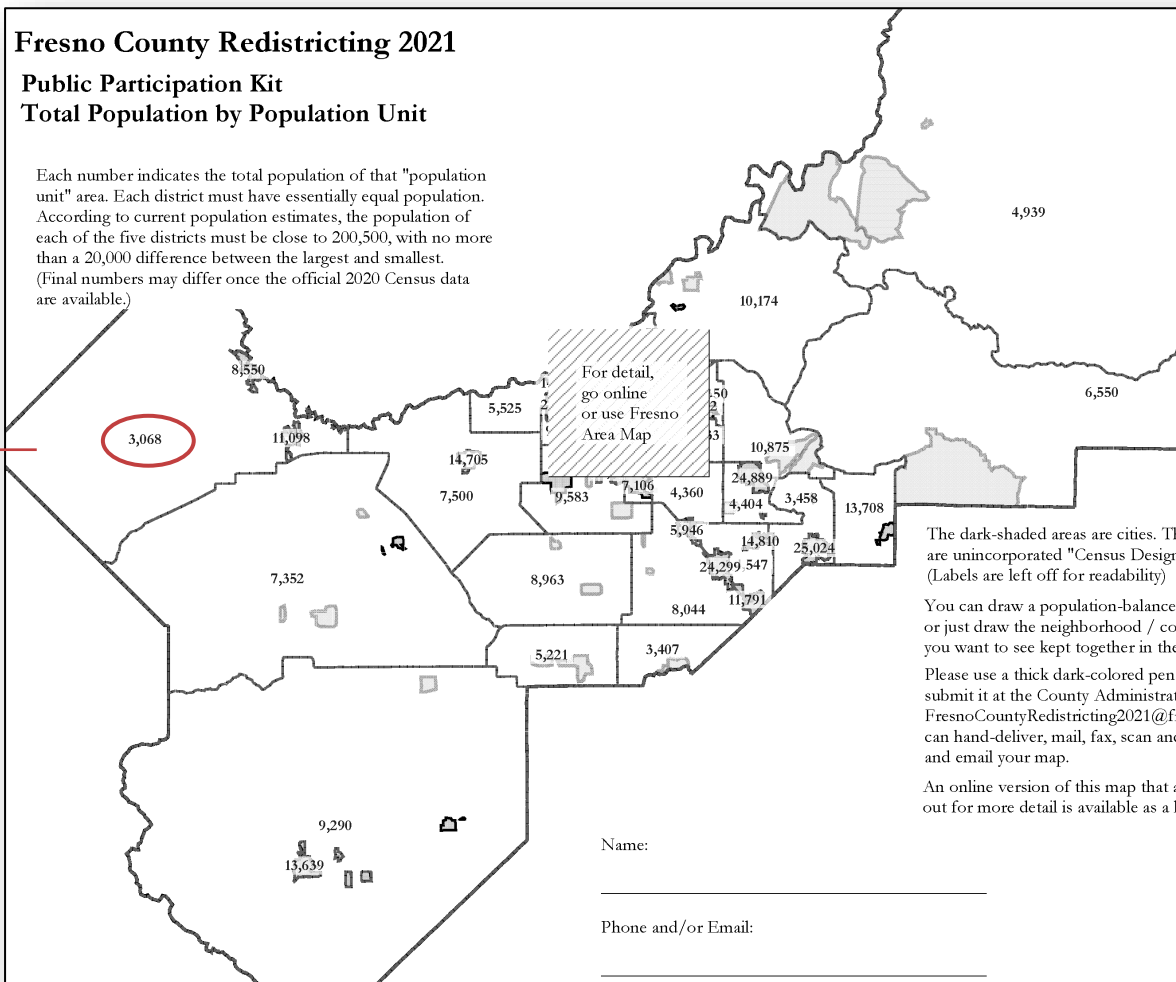
- ESRI's "ArcGIS Online" – similar to Google Maps in ease of use
- Used to review, analyze and compare maps, not to create them
- Includes overlays of "community of interest" and other Story Map data
- [Sample map from Lake Forest](#)



# Simple Map Drawing Tool

## Paper “Public Participation Kit”

- For those without internet access or who prefer paper
- Total Population Counts only – no demographic numbers
- Geographic units would be tracts, CDP’s and smaller cities



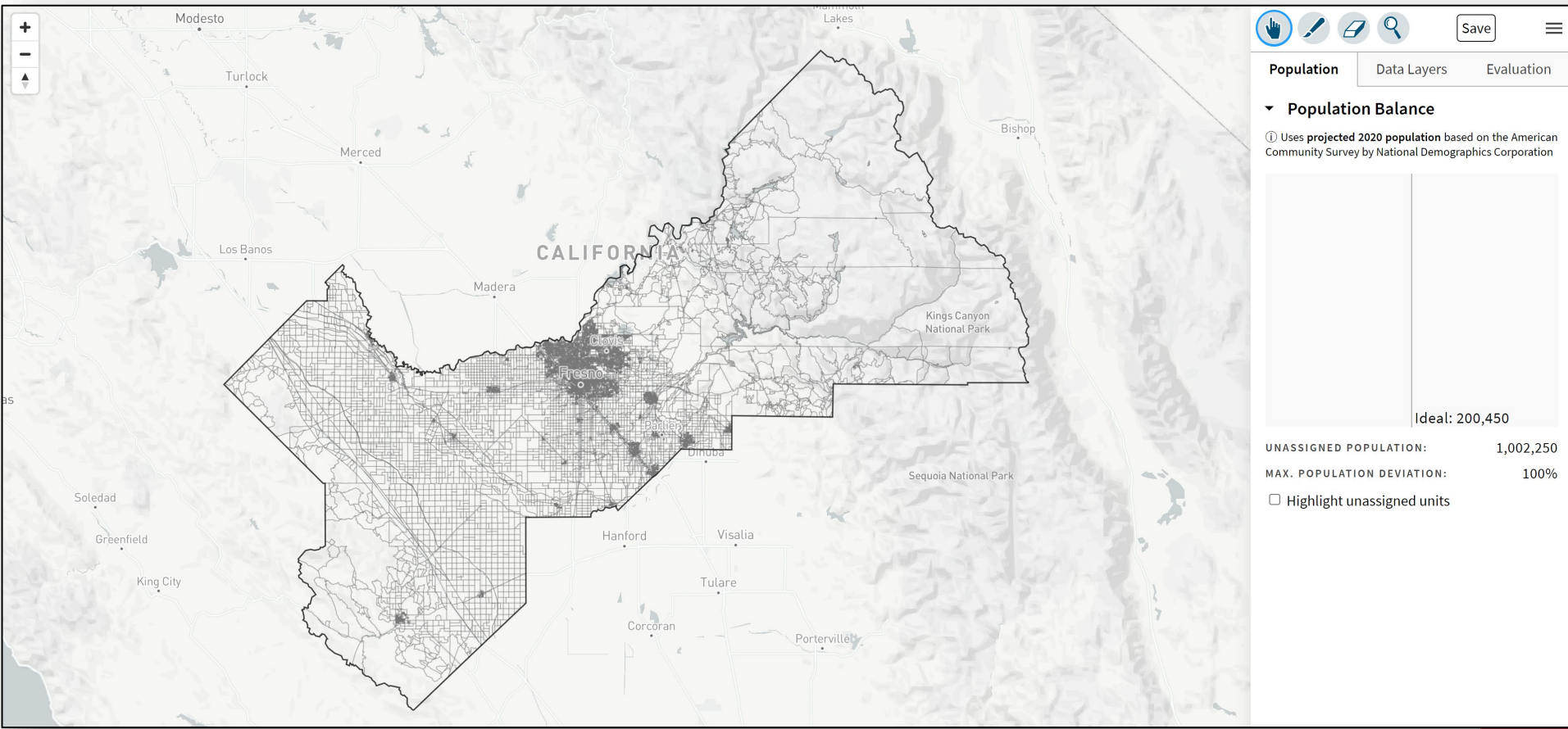




# DistrictR

## “Draw Your Community of Interest” focus

- [districtR.org/tag/Fresno](https://districtR.org/tag/Fresno)
- Also includes simple district-mapping tool; Only available in English
- Similar external options: [Representable.org](https://representable.org), [DrawMyCACommunity.org](https://drawmycacomunity.org)

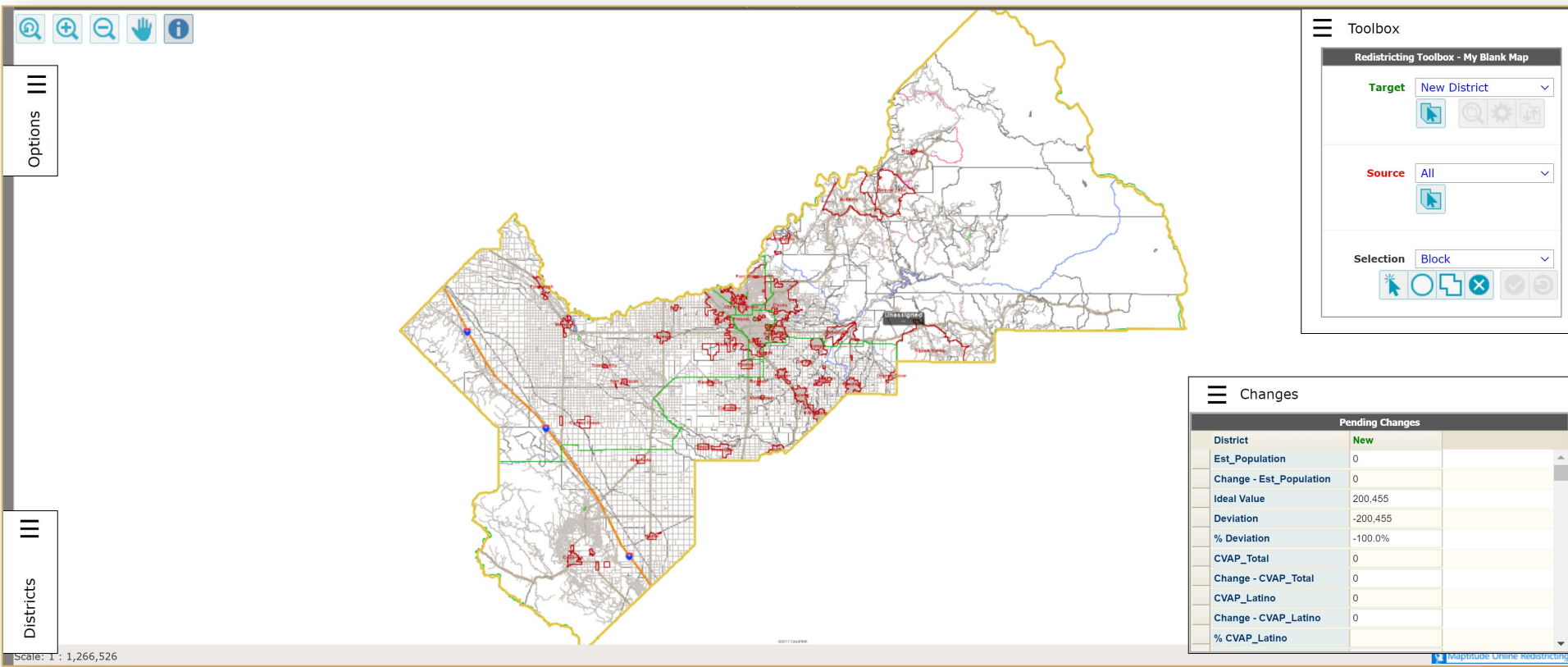




# Caliper's "Maptitude Online Redistricting"

## Full Database, Powerful Online Mapping Tool

- <https://inzolia.caliper.com/FresnoCounty/Default.aspx>
- Powerful, common, data-rich online tool
- Six language options: English, Spanish, Portuguese, Vietnamese, Mandarin and Korean



Options

Districts

Scale: 1 : 1,266,526

Toolbox

Redistricting Toolbox - My Blank Map

Target

Source

Selection

Changes

Pending Changes	
District	New
Est_Population	0
Change - Est_Population	0
Ideal Value	200,455
Deviation	-200,455
% Deviation	-100.0%
CVAP_Total	0
Change - CVAP_Total	0
CVAP_Latino	0
Change - CVAP_Latino	0
% CVAP_Latino	

Maptitude Online Redistricting

# Share Your Thoughts

HOME COMMISSION MEETINGS REDISTRICTING RESOURCES

 FRESNO COUNTY  
**REDISTRICTING 2021**

The County of Fresno is currently initiating the 2021 Redistricting process.

Applications for membership on the advisory commission to the Board were accepted from April 27, 2021 through May 14, 2021, and the commission was selected by the Board of Supervisors on May 25, 2021.

For more information, please contact [FresnoCounty2021Redistricting@fresnocountyca.gov](mailto:FresnoCounty2021Redistricting@fresnocountyca.gov).

**Website:** [www.co.fresno.ca.us/resources/redistricting](http://www.co.fresno.ca.us/resources/redistricting)

**Phone:** 559.600.1221 | **Email:** [FresnoCounty2021Redistricting@fresnocountyca.gov](mailto:FresnoCounty2021Redistricting@fresnocountyca.gov)