

Agenda Item 4a - Minutes



Fresno County Advisory Redistricting Commission Summary of Proceedings

Thursday, August 12, 2021, 6:05 p.m.
Fresno County Health and Wellness Center
1925 E. Dakota Ave., Fresno, CA 93726
(In-Person and Virtual Zoom Meeting)

Commission Members

District 1:	<u>Katherine Burrows</u>	<u>Ken Abrahamian</u>
District 2:	<u>Elizabeth Kolstad</u>	<u>Lawrence Garcia</u>
District 3:	<u>Patience Milrod</u>	<u>Hugo Morales</u>
District 4:	<u>James Petty Jr.</u>	<u>Glenda Hill</u>
District 5:	<u>Suzanne Motte</u>	<u>Richard Gallegos</u>
CAO:	<u>Jeff Cardell</u>	

1. Call to Order

Commission convened at 6:10 p.m.

2. Roll Call

Commissioners Present: Burrows, Abrahamian, Garcia, Milrod, Morales, Motte, Gallegos, Cardell

Commissioners Absent: Hill, Kolstad, Petty

3. Action and Discussion Items

a) Approval of Minutes of the Commission's July 7, 2021 meeting (Action)

Motion and second to approve the Minutes of July 7, 2021.

Motion Carried: 8 Ayes 0 Noes 3 Absent

b) Discuss and Approve Commission hearing schedule for October 2021 meeting (Discussion and Action)

Public Comment:

Mr. Guyona – Ensure the meeting date/time/place is announced to the public.

Motion and second to change meeting date to Friday, October 22, 2021, 6:05 pm, and Public Hearing at 6:30 p.m.

Motion Failed: 3 Ayes 5 Noes 3 Absent

c) Discuss and provide direction to staff on recommendation to add one (1) "Virtual" Workshop in September (Discussion and Action)

Discussion to add a virtual workshop on Wednesday, September 29, 2021, at 6 p.m.

Motion and second to add a virtual workshop on Wednesday, September 29, 2021, at 6 p.m.

Motion Carried: 8 Ayes 0 Noes 3 Absent

Commissioner Discussion:

- Consider inviting Common Cause to speak at a future public meeting.

Public Comment:

- Speaker 1: Training on Voting rights act and fair maps act.
- Speaker 2: (Mr. Guyona): Recommends inviting common cause to present in person, and importance that the maps are fair and accurate district representation.
- Speaker 3: Commented about Common Cause, and accurate representation.
- Speaker 4: Demographic shift in the last 20 years, and importance of accurate district representation.

The live video portion of the meeting was interrupted for approximately 35 minutes, due to Zoom program technical difficulties. Commissioner Burrows (who attended virtually) also lost connection and left the meeting.

The Zoom connection was restored and the meeting live video resumed.

d) Receive presentation of Public Outreach Plan (Discussion)

Jennifer Fitzgerald, Tripepi Smith, presented information on the public outreach plan.

Commissioner Concern(s):

- The outreach efforts presented may not accurately reflect the community.

Public Comment:

- Speaker 1: Public outreach (Libraries).
- Speaker 2: The Asian American and Pacific Islander (AAPI) community, and leveraging multi-cultural media.
- Speaker 3 (Sonja, Asian American Collaborative): AAPI community outreach.

- e) Bylaws – Discuss Commissioner Milrod’s proposed amendment to Commission Bylaws, Article 2, Section J (“Communications”) and either approve amendment as requested, or with additional amendments, or maintain Article 2, Section J, without amendment (Discussion and Action)

Commissioners discussed a proposed amendment to the Bylaws to add language to address disclosure of community input, in-person contact, and written comments.

Motion and second to approve an amendment to the Commission Bylaws as proposed and presented by Commissioner Milrod.

Motion failed: 4 Ayes 3 Noes 4 Absent

4. **Public Hearing and Public Input on Redistricting Process at 6:30 p.m. – Informational presentation regarding 2021 Fresno County Supervisorial Redistricting**

Topics Include:

- Clarification for Commissioners responding to public questions and inquiries.
- Remote/virtual access availability for future public meetings.
- Concerns regarding the date of the upcoming Public Workshop on July 14, 2021, and possibility of rescheduling or adding additional public meetings and workshops.
- Accessibility to language translation at future meetings.
- Criteria for Commissioners to determine the need for additional meetings, and how the public can request a meeting.

Dr. Tilton presented information on the redistricting process.

Public Comments:

- Speaker 1 (Laurie, Delores Huerta Foundation): Commented about the map she presented.
- Speaker 2 (Mr. Sandoval, District 1): In support of the map submitted by previous speaker.
- Speaker 3 (District 1): Commented about equitable maps and District 1 challenges.
- Speaker 4 (Mr. Guyona): Voting rights act requirements, and importance of majority/minority districts.
- Speaker 5 (Norma Sandoval, District 4): Water and sewer concerns.
- Speaker 6 (Rita Flores, District 4): Water, sewer, streets, sidewalks, street light concerns.
- Speaker 7 (via translator): In favor of the District 4 map submitted.
- Speaker 8 (Alma, District 4, via translator): Concerns include, water and safety.
- Speaker 9 (Ronald Martin): In favor of the equitable coalition map.
- Speaker 10: Meeting locations.
- Speaker 11 (Jenny): In support of the equitable coalition map, and leave Clovis as a whole.
- Speaker 12 (District 1): Keep the City of Clovis together.
- Speaker 13 (Mary Ann Kass, League of Women Voters): Concerns about how the comments from the meetings are recorded.
- Speaker 14 (Michael Evans): Important that the districts represent the community, and map compliance.

- Speaker 15 (District 5): Public outreach efforts.

5. **Public Comments** *(This portion of the meeting is reserved for persons desiring to address the Advisory Redistricting Commission about matters within the jurisdiction of the Commission, but not listed on this Agenda. Matters presented during the Public Comment Period cannot be discussed or acted upon by the Commission. Comments will be limited to two (2) minutes for each speaker unless non-English translation is needed, in which the speaker will be limited to four (4) minutes, with a total of 20 minutes allotted for the Public Comment Period.*

Public Comment:

None.

6. **Announcements**

Upcoming Public Workshops:

- Saturday, August 21, 2021 @ 9:30 a.m. – Woodward Park Regional Library – 944 E. Perrin Ave., Fresno, CA 93720 (District 2)
- Saturday, August 21, 2021 @ 2:30 p.m. – Clovis Veteran’s Memorial Center – 808 4th Street, Clovis, CA 93612 (District 5)

Upcoming Commission Hearing:

- October 21, 2021 @ 6:05 p.m. – Fresno County Health and Wellness Center, 1925 E. Dakota Ave., Fresno, CA 93704

The Commissioners may consider adding a hearing, on October 5, 2021, 1 p.m., at the Fresno County Health and Wellness Center, 1925 E. Dakota Ave., Fresno, CA 93726. The meeting can be used to look at the data, but not for map consideration.

7. **Adjournment**

Motion and second to adjourn the meeting:

Motion carried: 7 Ayes 0 Noes 4 Absent

The meeting adjourned at 8:55 p.m. The next meeting is scheduled on Thursday, August 21, 2021, at 9:30 a.m. (workshop), at Woodward Park Regional Library, 944 E. Perrin Avenue, Fresno.

**Agenda Item 4b - Verbal Update
regarding Common Cause**

Agenda Item 4c - Current
Supervisory Districts

Fresno County - Current Districts

District		1	2	3	4	5	Total
	Total Pop	205,264	199,107	188,307	185,990	229,862	1,008,530
	Deviation from ideal	3,558	-2,599	-13,399	-15,716	28,156	43,872
	% Deviation	1.76%	-1.29%	-6.64%	-7.79%	13.96%	21.75%
Total Pop	% Hisp	62.5%	34%	66%	77%	34%	54%
	% NH White	16%	45%	13%	16%	41%	27%
	% NH Black	8%	6%	7%	1%	4%	5%
	% Asian-American	12%	12%	12%	4%	17%	12%
Citizen Voting Age Pop	Total	104,729	142,491	100,997	94,210	142,620	585,047
	% Hisp	51%	27%	55%	64%	28%	42%
	% NH White	26%	57%	23%	28%	53%	40%
	% NH Black	11%	5%	8%	1%	4%	6%
	% Asian/Pac.Isl.	10%	10%	12%	5%	14%	11%
Voter Registration (Nov 2020)	Total	90,010	122,649	77,938	79,545	133,838	503,980
	% Latino est.	51%	25%	56%	64%	27%	41%
	% Spanish-Surnamed	47%	24%	52%	59%	25%	38%
	% Asian-Surnamed	6%	5%	3%	3%	6%	5%
	% Filipino-Surnamed	1%	1%	1%	1%	1%	1%
	% NH White est.	30%	64%	30%	32%	63%	48%
	% NH Black	14%	4%	11%	1%	4%	6%
Voter Turnout (Nov 2020)	Total	59,903	98,178	46,061	56,494	105,575	366,211
	% Latino est.	48%	23%	54%	59%	25%	37%
	% Spanish-Surnamed	45%	22%	50%	55%	23%	35%
	% Asian-Surnamed	6%	5%	3%	4%	5%	5%
	% Filipino-Surnamed	1%	1%	1%	1%	1%	1%
	% NH White est.	32%	67%	33%	36%	66%	52%
	% NH Black	12%	4%	10%	1%	3%	5%
Voter Turnout (Nov 2018)	Total	38,001	71,692	29,021	38,459	70,456	247,629
	% Latino est.	44%	19%	50%	53%	21%	33%
	% Spanish-Surnamed	42%	18%	48%	51%	20%	31%
	% Asian-Surnamed	5%	4%	2%	4%	4%	4%
	% Filipino-Surnamed	1%	1%	1%	1%	1%	1%
	% NH White est.	36%	71%	36%	41%	70%	56%
	% NH Black est.	12%	4%	9%	1%	3%	5%
ACS Pop. Est.	Total	201,631	200,621	181,466	185,693	211,858	981,270
Age	age0-19	34%	27%	33%	33%	30%	31%
	age20-60	52%	51%	53%	50%	51%	52%
	age60plus	14%	22%	14%	16%	18%	17%
Immigration	immigrants	27%	14%	24%	28%	15%	21%
	naturalized	33%	58%	37%	29%	62%	41%
Language spoken at home	english	45%	74%	43%	40%	71%	55%
	spanish	44%	15%	46%	56%	16%	35%
	asian-lang	5%	6%	9%	1%	9%	6%
	other lang	6%	5%	2%	3%	5%	4%
Language Fluency	Speaks Eng. "Less than Very Well"	27%	8%	24%	27%	9%	19%
Education (among those age 25+)	hs-grad	47%	43%	46%	45%	49%	46%
	bachelor	9%	23%	8%	9%	19%	14%
	graduatedegree	3%	14%	3%	4%	9%	7%
Child in Household	child-under18	47%	31%	42%	47%	38%	40%
Pct of Pop. Age 16+	employed	62%	63%	58%	60%	63%	61%
Household Income	income 0-25k	26%	17%	39%	26%	16%	24%
	income 25-50k	26%	18%	26%	27%	19%	23%
	income 50-75k	19%	18%	16%	17%	17%	17%
	income 75-200k	26%	39%	17%	27%	41%	31%
	income 200k-plus	2%	9%	1%	3%	7%	5%
Housing Stats	single family	76%	71%	61%	81%	82%	74%
	multi-family	24%	29%	39%	19%	18%	26%
	rented	51%	43%	65%	46%	33%	47%
	owned	49%	57%	35%	54%	67%	53%

Total population data from the 2020 Decennial Census.

Surname-based Voter Registration and Turnout data from the California Statewide Database.

Latino voter registration and turnout data are Spanish-surname counts adjusted using Census Population Department undercount estimates. NH White and NH Black registration and turnout counts estimated by NDC. Citizen Voting Age Pop., Age, Immigration, and other demographics from the 2015-2019 American Community Survey and Special Tabulation 5-year data.

Agenda Item 5 - Public Hearing



FRESNO COUNTY
REDISTRICTING 2021

County of Fresno

Introduction to Redistricting

October 5, 2021

Dr. Jeff Tilton, Senior Consultant
National Demographics Corporation

Redistricting Process

Step	Description
Pre-Draft Public Hearing August 12, 6:30 p.m. Health and Wellness Center	<ul style="list-style-type: none">• Advisory Commission Public Hearing• Held prior to release of draft maps• Educate, solicit input on the communities in the Districts
Census Data Releases	<ul style="list-style-type: none">• Census Bureau releases official 2020 Census population data – Aug. 12• California’s official ‘prisoner-adjusted’ 2020 redistricting data – Sept. 20
Engagement Workshops	<ul style="list-style-type: none">• July 14, 6-8 p.m. (Riverdale Unified School District)• August 3, 6-8 p.m. (Gaston Middle School)• August 4, 6-8 p.m. (Fresno High School)• August 21, 9:30-11:30 a.m. (Woodward Park Regional Library)• August 21, 2:30-4:30 p.m. (Clovis Veterans Memorial Center)• September 29, 6-8 p.m. (via Zoom)

Redistricting Process (continued)

Step	Description
<p>Pre-Draft Public Hearing October 5, 1:15 p.m. Health and Wellness Center</p>	<ul style="list-style-type: none"> • Advisory Commission Public Hearing • Recommend communities of interest, neighborhoods to Board of Supervisors
<p>Pre-Draft Public Hearing October 21, 6:30 p.m. Health and Wellness Center</p>	<ul style="list-style-type: none"> • Advisory Commission Public Hearing • Recommend communities of interest, neighborhoods to Board of Supervisors • Recommend draft maps to Board of Supervisors • Deadline to submit maps: October 10, 2021, 5 p.m. • Deadline for maps to be posted to website: October 14, 2021, 5 p.m.
<p>Draft Map Public Hearing November 2, 1 p.m. Board Chambers</p>	<ul style="list-style-type: none"> • Board of Supervisors Public Hearing • Discuss, revise the draft maps; discuss the election sequence • Deadline for maps to be posted to website: October 27, 2021, 5 p.m.
<p>Draft Map Public Hearing November 16, 1 p.m. Board Chambers</p>	<ul style="list-style-type: none"> • Board of Supervisors Public Hearing • Select final map and election sequence • Deadline for maps to be posted to website: November 9, 2021, 5 p.m.

Redistricting Rules and Goals

1. Federal Laws

- Equal Population
- Federal Voting Rights Act
- No Racial Gerrymandering



2. California Criteria for Counties

1. Geographically contiguous
2. Undivided neighborhoods and “communities of interest” (Socio-economic geographic areas that should be kept together)
3. Cities and CDPs
4. Easily identifiable boundaries
5. Compact (Do not bypass one group of people to get to a more distant group of people)

Prohibited:

“Shall not favor or discriminate against a political party.”

3. Other Traditional Redistricting Principles

- Minimize voters shifted to different election years
- Respect voters’ choices / continuity in office
- Future population growth
- Preserving the core of existing districts

2000-2010-2020

	2000 Population	Ideal Population	%	Difference from Ideal Pop.	Ind. Deviation	After 2001 Redistricting	%	Difference from Ideal Pop.	Ind. Deviation
District 1	167,406	159,881	20.94%	7,525	4.71%	158,701	19.85%	1,180	0.74%
District 2	167,884	159,881	21.00%	8,003	5.01%	161,973	20.26%	(2,092)	-1.29%
District 3	141,864	159,881	17.75%	(18,017)	-11.27%	159,858	20.00%	23	0.01%
District 4	165,097	159,881	20.65%	5,216	3.26%	159,464	19.95%	417	0.26%
District 5	157,156	159,881	19.66%	(2,725)	-1.70%	159,411	19.94%	470	0.29%
	799,407		100.00%			799,407	100.00%		

Deviation

16.30%

2.00%

	2010 Population	Ideal Population	%	Difference from Ideal Pop.	Ind. Deviation	After 2011 Redistricting	%	Difference from Ideal Pop.	Ind. Deviation
District 1	195,958	186,090	21.06%	9,868	5.30%	186,669	20.06%	(579)	-0.31%
District 2	178,751	186,090	19.21%	(7,339)	-3.94%	187,313	20.13%	(1,223)	-0.65%
District 3	161,231	186,090	17.33%	(24,859)	-13.36%	185,536	19.94%	554	0.30%
District 4	185,758	186,090	19.96%	(332)	-0.18%	185,758	19.96%	332	0.18%
District 5	208,752	186,090	22.44%	22,662	12.18%	185,174	19.90%	916	0.49%
	930,450		100.00%			930,450	100.00%		

Deviation

25.54%

1.14%

Pop. Increase from 2000

131,043

16.39%

	2020 Population	Ideal Population	%	Difference from Ideal Pop.	Ind. Deviation	After 2021 Redistricting	%	Difference from Ideal Pop.	Ind. Deviation
District 1	205,264	201,706	20.35%	3,558	1.76%				
District 2	199,107	201,706	19.74%	(2,599)	-1.29%				
District 3	188,307	201,706	18.67%	(13,399)	-6.64%				
District 4	185,990	201,706	18.44%	(15,716)	-7.79%				
District 5	229,862	201,706	22.79%	28,156	13.96%				
	1,008,530		100.00%						

Deviation

21.75%

Pop. Increase from 2010

78,080

8.39%

2020 Data

Fresno County - Current Districts							
District		1	2	3	4	5	Total
	Total Pop	205,264	199,107	188,307	185,990	229,862	1,008,530
	Deviation from ideal	3,558	-2,599	-13,399	-15,716	28,156	43,872
	% Deviation	1.76%	-1.29%	-6.64%	-7.79%	13.96%	21.75%
Total Pop	% Hisp	62.5%	34%	66%	77%	34%	54%
	% NH White	16%	45%	13%	16%	41%	27%
	% NH Black	8%	6%	7%	1%	4%	5%
	% Asian-American	12%	12%	12%	4%	17%	12%
Citizen Voting Age Pop	Total	104,729	142,491	100,997	94,210	142,620	585,047
	% Hisp	51%	27%	55%	64%	28%	42%
	% NH White	26%	57%	23%	28%	53%	40%
	% NH Black	11%	5%	8%	1%	4%	6%
	% Asian/Pac. Isl.	10%	10%	12%	5%	14%	11%
Voter Registration (Nov 2020)	Total	90,010	122,649	77,938	79,545	133,838	503,980
	% Latino est.	51%	25%	56%	64%	27%	41%
	% Spanish-Surnamed	47%	24%	52%	59%	25%	38%
	% Asian-Surnamed	6%	5%	3%	3%	6%	5%
	% Filipino-Surnamed	1%	1%	1%	1%	1%	1%
	% NH White est.	30%	64%	30%	32%	63%	48%
	% NH Black	14%	4%	11%	1%	4%	6%

Defining Neighborhoods

1st Question: What is your neighborhood?

2nd Question: What are its geographic boundaries?

Examples of physical features defining a neighborhood boundary:

- Natural neighborhood dividing lines, such as highway or major roads, rivers, canals and/or hills
- Areas around parks or schools
- Other neighborhood landmarks

In the absence of public testimony, planning records and other similar documents may provide definition.



Beyond Neighborhoods: Defining Communities of Interest

1st Question: What defines your community?

- Geographic Area, plus
- Shared issue or characteristic
 - Shared social or economic interest
 - Impacted by county policies
- Tell us “your community’s story”

2nd Question: Would this community benefit from being “included within a single district for purposes of its effective and fair representation”?

- Or would it benefit more from having multiple representatives?

Definitions of Communities of Interest may not include relationships with political parties, incumbents, or political candidates.

Possible Neighborhoods / Communities

From July 14, 2021, public workshop:

- **Riverdale**
- **Lanare**
- **East of CA 41/West of CA 41**
 - **Type of crops; no trees**
 - **Size of farms and corporations**
 - **Family farms**
 - **Housing type; access to resources**
- **Unincorporated communities**
 - **Lack access to water**
 - **Farmworker community**

Possible Neighborhoods / Communities

From August 3, 2021, public workshop:

- Parlier
- Southeast Fresno (water quality)
- Parlier (sewer systems/storm water systems)
- Clovis to the foothills (east)
- West Fresno, west of 99 (new construction)
- Old West, historically recognized
- African American communities
- Sanger (infrastructure investments)
- Water services (how accessible to residents)
- Rural communities (high Latino populations)
- Foothills (remain unified w/ services)
- East vs. Urban

Submissions edited for clarity and brevity

Possible Neighborhoods / Communities

From August 4, 2021, public workshop:

- Food deserts, lack access to food quality options
- Shopping areas
- Communities without transportation
- Accessibility to jobs
- Loma Vista – existing and future growth
 - West:
 - East: McCall
- Heritage Grove
 - Willow, Sheppard, Copper
- Parlier:
 - water quality issues, access to water for low income communities, water rates going up
 - Transportation issues, traffic around school zones
 - Policy issues
- Communities centered around schools, enrollment boundaries for each of the schools

Submissions edited for clarity and brevity

Possible Neighborhoods / Communities

From August 4, 2021, public workshop (continued):

- Sunnyside
- Community Planning areas
 - Tower District
 - Southwest Fresno
- East side Fresno, Kings Canyon
- Pinedale
- Districts according to Police Departments
 - Public safety response times
 - County of Fresno as well as police within limits of City
- County Islands within city limits
- Mayfair / “Lake Don Pedro”
- Muscatel / West Central Fresno
- Central District
- Language spoken
- Historic Districts
- Historic Tracts
 - GIS data on Fresno website
- Canals, railways, freeways
 - Recognizable boundaries
- Renters, homeowners
- Historically redlined communities

Submissions edited for clarity and brevity

Possible Neighborhoods / Communities

From August 21, 2021, public workshops:

- Fig Garden and Pinedale to be unified
- Unincorporated County Islands in District 2
 - Fig Garden, Fort Washington, Bullard – should not be divided amongst themselves
- West Fresno / Central Area to be unified
- 99 Freeway
- District 2 – 3 school districts
 - Clovis
 - Central
 - Fresno
- 99 divides North of Shields, strong dividing line
- Punjabi community along west side of 99

Submissions edited for clarity and brevity

Possible Neighborhoods / Communities

From August 21, 2021, public workshops (continued):

- Train Line – Chinatown, Downtown Fresno, Lower and Central
- Fresno State neighborhoods
 - Shaw, Herndan
- Cabins in Shaver / Foothills, united with today's location
 - Connected to communities in North Fresno: Fig Gardens
 - Disagreement on connecting these in resulting of diluting of voting block
- Downtown Fresno to be disconnected with South West / West Fresno – divide around City Hall / Van
- Small section of District 5 includes apartment buildings, should be in District 2 to keep students together – divided by 168
- Fig Garden Loop, currently divided by railroad, should be connected, Shaw Ave., Herndan

Submissions edited for clarity and brevity

Possible Neighborhoods / Communities

From August 21, 2021, public workshops (continued):

- Downtown Fresno, 93721, 93706, 93726
- Area around Clovis Library
- Kings Canyon corridors
 - Sanger, Clovis, Fresno Unified Districts
 - Minority owned businesses
 - 93727, new developments East
- Asian Village, Chestnut (West), Kings Canyon (South), Clovis (East)
- First & McKinley – City of Fresno, Romain Park Area
- El Dorado Park – Low-income renters area, Shaw & 6th
- West Fresno, Vang Pao Elementary
 - Elm Ave going to South, Washington Union HS District, Central Union HS
 - California and West

Submissions edited for clarity and brevity

Possible Neighborhoods / Communities

From August 21, 2021, public workshops (continued):

- South of Shaw, West of Palm, down to McKinley, West to railroad
- Areas South of McKinley, low access to internet, high child population count, non-English speakers
- Cities west of 41
- East of 41 – Calwa, Malaga
- Melody Park Area
- Summetset Apartments, across the street from FIRM
- Selma, Clovis East, Central Unified, along 99 (Hmong/Punjabi)

Submissions edited for clarity and brevity

Possible Neighborhoods / Communities

From September 29, 2021, virtual public workshop:

- Sunnyside, Kings Canyon, Olive Street
- Kings Canyon, Willow Street (no lights)
- CVUP - Hmong Community (Sunnyside, 3,4,5 - preferably in District 3), Lanare (District 4) and Cantua Creek (Requested to be in the same district)
- Center of Fresno, no lights/safety, homeless
- Farmworking community, Cedar and Butler
- North Central Fresno (Hoover High School), by Shaw/Fresno, County Islands (problems with street lights), Old Fig Garden (group), Woodward Park, North Clovis, North Fresno, Highway City, Herndon (neighborhood), El Dorado, Fresno Inclusive Families Map
- South Tower (District 3), Central Fresno, 1st/McKinley, Hmong Community

Submissions edited for clarity and brevity

Possible Neighborhoods / Communities

From September 29, 2021 (continued)

- Sunnyside (Kings Canyon/Willow Street) - Problems with lights on Olive Street
- West of Fresno, Community of farm workers, West of the 41, Riverdale, Urban West of 99, quality water, infrastructure, roads, internet, accessibility to health, unemployment
- Sanger, Hispanic community, quality of water, safety of roads, street lights, lack of housing, public transportation (Dolores Huerta organization)
- East of highway 41, Selma, Southeast Fresno
- Del Ray (Southeast Fresno), District 4 Map, southeast Fresno, lower 1/3 income community, agricultural environment

Possible Neighborhoods / Communities

From September 29, 2021 (continued)

- Sanger - Farm worker community, East of 41, Southeast Fresno, Selma, District 4, East/South communities together, Parlier, Tower
- Sanger - South East, rural Fresno, Reedley, South East of 41, District 4
- Sanger - Working in the fields, East of highway 41, South East of City of Fresno, Selma, Calwa
- Kerman, West of Highway 41, North of 99 (except Northwest of 99), Orange Cove is not connected to the rest of the area), District 4/District 1 Westlands Water District (request to be in same district), Westhills College (Coalinga) (keep in same district),
- Parlier, Sanger/Orange Cove

Possible Neighborhoods / Communities

From September 29, 2021 (continued)

- Support for Fresno Families Inclusive Map. Keep West County Together. Sunnyside Area should be kept together. In South East area uplift Hmong and Punjabi. Concerned that Northern districts dilute the power of people who live there. Fig Garden people are not well connected (apartment complexes), Clovis Pinedale is another community of interest that needs to be protected. General objection to the current
- 93711 zip is contrasted 93608 (Canua Creek, Mendota) Points of disparity in the educational outcomes of the school districts. Hope to address historic differences in funding for local school systems.
- Support of Fresno Inclusive Family Map.
- Intersection of Valentine and San Joaquin

Public Mapping and Map Review Tools

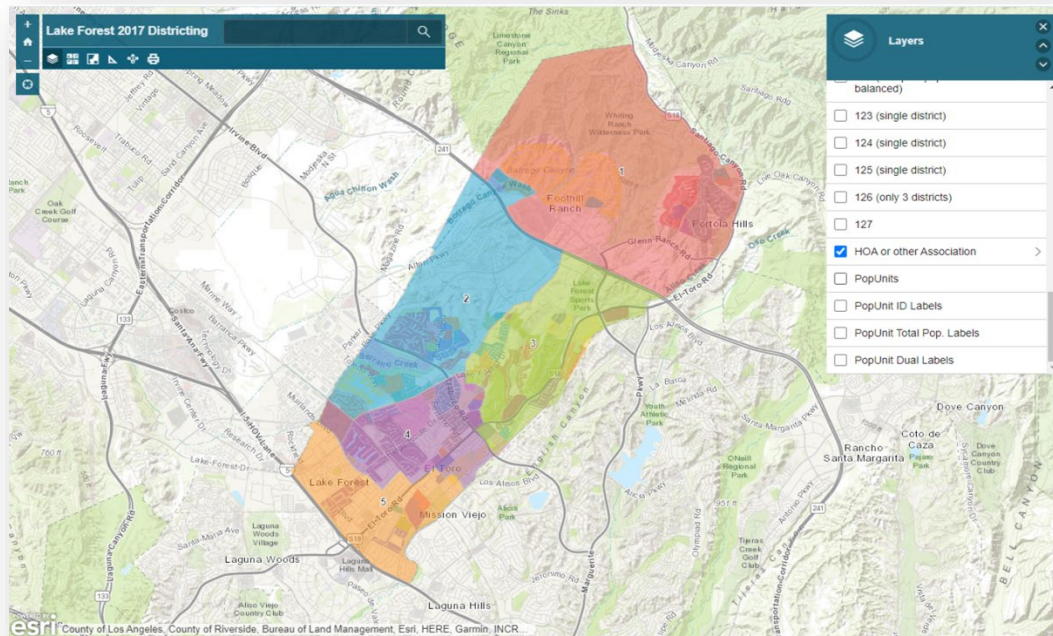
- **Different tools for different purposes**
- **Different tools for different levels of technical skill and interest**
 - Simple “review draft maps” tool
 - Easy-to-use “Draw your neighborhood” tool
 - Paper- and Excel-based simple “Draw a draft map” tools
 - Powerful, data-rich “Draw a draft map” tool

Whether you use the powerful (but complicated) online mapping tool, Excel, the paper kit, or just draw on a napkin, we welcome your maps!

Simple Map Review Tool

Online Interactive Review Map

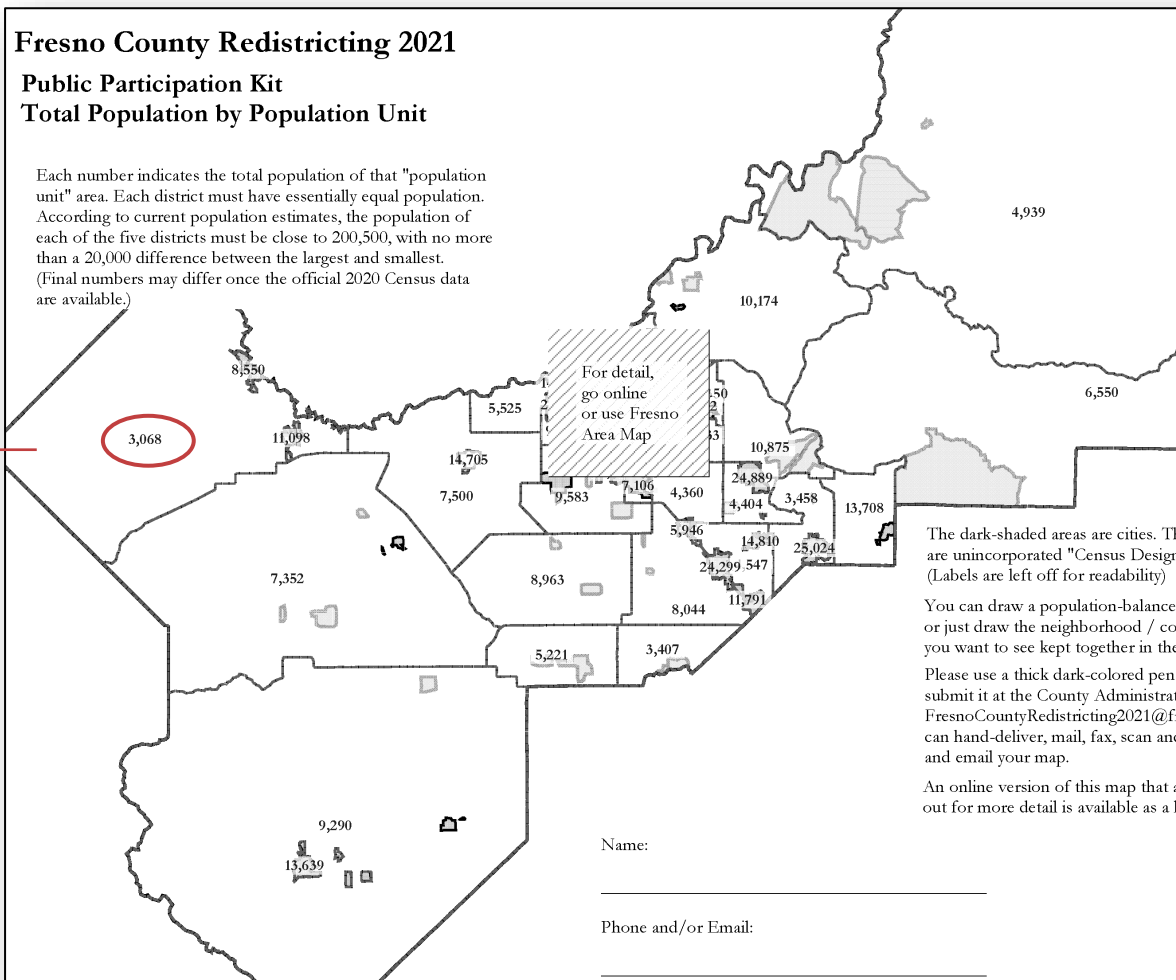
- ESRI's "ArcGIS Online" – similar to Google Maps in ease of use
- Used to review, analyze and compare maps, not to create them
- Includes overlays of "community of interest" and other Story Map data
- [Sample map from Lake Forest](#)



Simple Map Drawing Tool

Paper “Public Participation Kit”

- For those without internet access or who prefer paper
- Total Population Counts only – no demographic numbers
- Geographic units would be tracts, CDP’s and smaller cities



Simple Map Drawing Tool + Excel Supplement

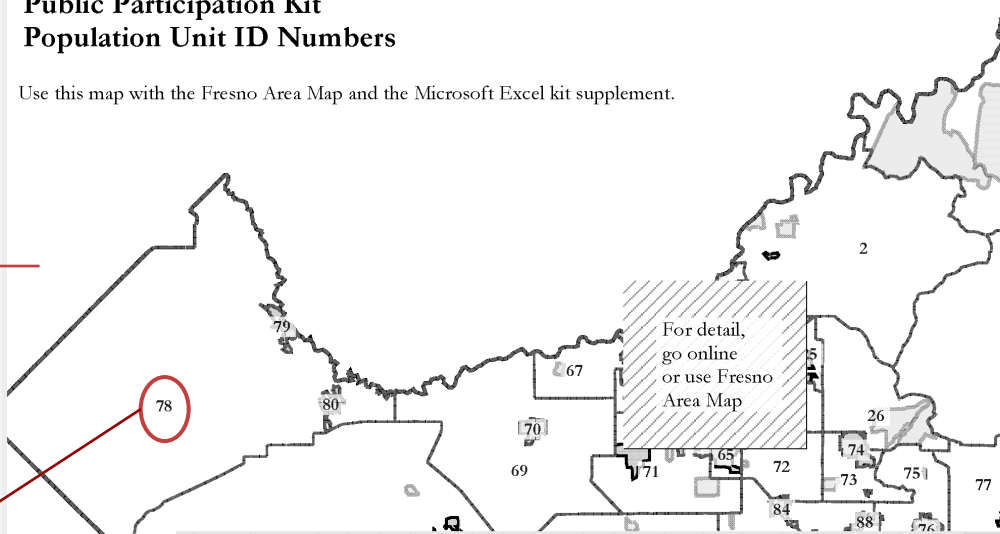
“Public Participation Kit”

- For those who know Excel and do not wish to use online tools
- Adds CVAP data
- Excel does the math
- Geographic units would be tracts, CDP’s and smaller cities

Fresno County Redistricting 2021

Public Participation Kit Population Unit ID Numbers

Use this map with the Fresno Area Map and the Microsoft Excel kit supplement.



AutoSave On Lake Forest 5-district Kit_ENG.xlsx

File Home Insert Page Layout Formulas Data Review View Help Acrobat

Clipboard Font Alignment Number

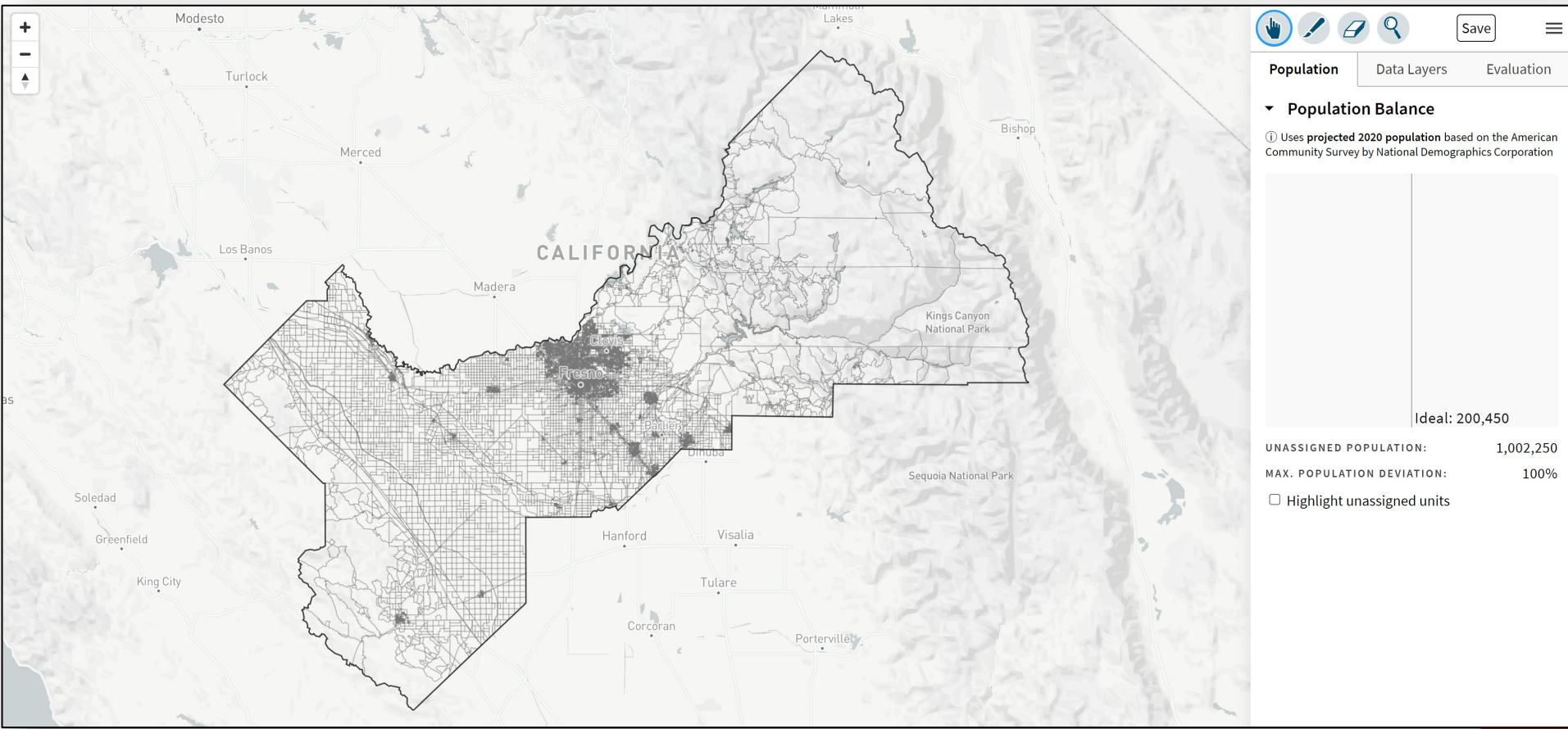
1	A	B	C	D	E	F	G	H	I	J	K	L	M	N	O	P	Q	R	S	T	U	V
1		Pop	Total Population		Voting Age Population				Citizen Voting Age Population				Nor. 2014 Registration									
2	1	1,216	642	557	18	15	873	397	442	12	831	390	441	0	574	195	7	3	245	63		
3	2	2,367	1,128	1,053	43	96	1,784	741	899	74	1,915	730	1,140	0	45	1,299	435	14	7	555	140	
4	3	1,643	768	278	42	25	1,036	741	236	15	400	235	145	0	20	505	286	3	4	161	73	
5	4	1,768	734	855	62	84	1,272	464	685	62	1,231	461	639	19	111	1,022	366	11	11	391	89	
6	5	2,001	209	1,655	14	79	1,639	144	1,392	64	1,511	88	1,337	12	38	1,776	146	46	7	1,089	67	
7	6	612	56	499	4	39	517	37	440	26	471	22	423	3	15	525	38	15	2	337	18	
8	7	1,753	1,180	501	70	16	1,945	767	494	16	780	335	440	0	777	378	7	4	241	70		

1	A	B	C	D	E	F	G	H	I	J	K	L	M	N	O	P	Q	R	S	T		
1		Sums by District Assigned																			Ideal population: 15,314	
2		City of San Buenaventura 2017 Public Participation Kit																				
3		enter your name here																				
4																						
5																						
6																						
7	Group	Category	1	2	3	4	5	6	7	Unassigned	Total	1	2	3	4	5	6	7	Unassigned	Total		
8		Tot. Pop.	0	0	0	0	0	0	0	0	107,197	107,197										
9		Deviation from	-15,314	-15,314	-15,314	-15,314	-15,314	-15,314	-15,314		0	-100%	-100%	-100%	-100%	-100%	-100%	-100%			0.00%	
10	Total	Hispanic	0	0	0	0	0	0	0	34,182	34,182	#DIV/0!	#DIV/0!	#DIV/0!	#DIV/0!	#DIV/0!	#DIV/0!	#DIV/0!	#DIV/0!	#DIV/0!	32%	
11		NH White	0	0	0	0	0	0	0	64,294	64,294	#DIV/0!	#DIV/0!	#DIV/0!	#DIV/0!	#DIV/0!	#DIV/0!	#DIV/0!	#DIV/0!	#DIV/0!	60%	
12		NH Black	0	0	0	0	0	0	0	1,919	1,919	#DIV/0!	#DIV/0!	#DIV/0!	#DIV/0!	#DIV/0!	#DIV/0!	#DIV/0!	#DIV/0!	#DIV/0!	2%	
13		NH Asian	0	0	0	0	0	0	0	4,550	4,550	#DIV/0!	#DIV/0!	#DIV/0!	#DIV/0!	#DIV/0!	#DIV/0!	#DIV/0!	#DIV/0!	#DIV/0!	4%	
14		Total CVAP	0	0	0	0	0	0	0	83,090	83,090	#DIV/0!	#DIV/0!	#DIV/0!	#DIV/0!	#DIV/0!	#DIV/0!	#DIV/0!	#DIV/0!	#DIV/0!	54%	
15	Voting Age	Hispanic	0	0	0	0	0	0	0	22,928	22,928	#DIV/0!	#DIV/0!	#DIV/0!	#DIV/0!	#DIV/0!	#DIV/0!	#DIV/0!	#DIV/0!	#DIV/0!	28%	
16		NH White	0	0	0	0	0	0	0	53,857	53,857	#DIV/0!	#DIV/0!	#DIV/0!	#DIV/0!	#DIV/0!	#DIV/0!	#DIV/0!	#DIV/0!	#DIV/0!	65%	
17		NH Black	0	0	0	0	0	0	0	3,401	3,401	#DIV/0!	#DIV/0!	#DIV/0!	#DIV/0!	#DIV/0!	#DIV/0!	#DIV/0!	#DIV/0!	#DIV/0!	2%	
18		NH Asian	0	0	0	0	0	0	0	77,063	77,063	#DIV/0!	#DIV/0!	#DIV/0!	#DIV/0!	#DIV/0!	#DIV/0!	#DIV/0!	#DIV/0!	#DIV/0!	4%	
19	Total CVAP	Hispanic	0	0	0	0	0	0	0	18,936	18,936	#DIV/0!	#DIV/0!	#DIV/0!	#DIV/0!	#DIV/0!	#DIV/0!	#DIV/0!	#DIV/0!	#DIV/0!	21%	
20		NH White	0	0	0	0	0	0	0	52,843	52,843	#DIV/0!	#DIV/0!	#DIV/0!	#DIV/0!	#DIV/0!	#DIV/0!	#DIV/0!	#DIV/0!	#DIV/0!	63%	
21		NH Black	0	0	0	0	0	0	0	2,630	2,630	#DIV/0!	#DIV/0!	#DIV/0!	#DIV/0!	#DIV/0!	#DIV/0!	#DIV/0!	#DIV/0!	#DIV/0!	2%	
22		NH Asian	0	0	0	0	0	0	0	63,996	63,996	#DIV/0!	#DIV/0!	#DIV/0!	#DIV/0!	#DIV/0!	#DIV/0!	#DIV/0!	#DIV/0!	#DIV/0!	33%	
23	Total Reg.	Hispanic	0	0	0	0	0	0	0	13,574	13,574	#DIV/0!	#DIV/0!	#DIV/0!	#DIV/0!	#DIV/0!	#DIV/0!	#DIV/0!	#DIV/0!	#DIV/0!	1%	
24		NH White	0	0	0	0	0	0	0	1,675	1,675	#DIV/0!	#DIV/0!	#DIV/0!	#DIV/0!	#DIV/0!	#DIV/0!	#DIV/0!	#DIV/0!	#DIV/0!	8%	
25		NH Black	0	0	0	0	0	0	0	463	463	#DIV/0!	#DIV/0!	#DIV/0!	#DIV/0!	#DIV/0!	#DIV/0!	#DIV/0!	#DIV/0!	#DIV/0!	3%	
26		NH Asian	0	0	0	0	0	0	0	30,448	30,448	#DIV/0!	#DIV/0!	#DIV/0!	#DIV/0!	#DIV/0!	#DIV/0!	#DIV/0!	#DIV/0!	#DIV/0!	28%	
27	Total Votes	Hispanic	0	0	0	0	0	0	0	4,317	4,317	#DIV/0!	#DIV/0!	#DIV/0!	#DIV/0!	#DIV/0!	#DIV/0!	#DIV/0!	#DIV/0!	#DIV/0!	0%	
28		NH White	0	0	0	0	0	0	0	461	461	#DIV/0!	#DIV/0!	#DIV/0!	#DIV/0!	#DIV/0!	#DIV/0!	#DIV/0!	#DIV/0!	#DIV/0!	11%	
29		NH Black	0	0	0	0	0	0	0	181	181	#DIV/0!	#DIV/0!	#DIV/0!	#DIV/0!	#DIV/0!	#DIV/0!	#DIV/0!	#DIV/0!	#DIV/0!	0%	
30		NH Asian	0	0	0	0	0	0	0	164	164	#DIV/0!	#DIV/0!	#DIV/0!	#DIV/0!	#DIV/0!	#DIV/0!	#DIV/0!	#DIV/0!	#DIV/0!	4%	
31																						
32																						
33	Submitter's Comments about the plan:																					
34	Think this map makes sense because ...																					
35																						
36																						
37																						
38																						
39																						
40																						
41																						
42																						
43																						
44																						
45																						

DistrictR

“Draw Your Community of Interest” focus

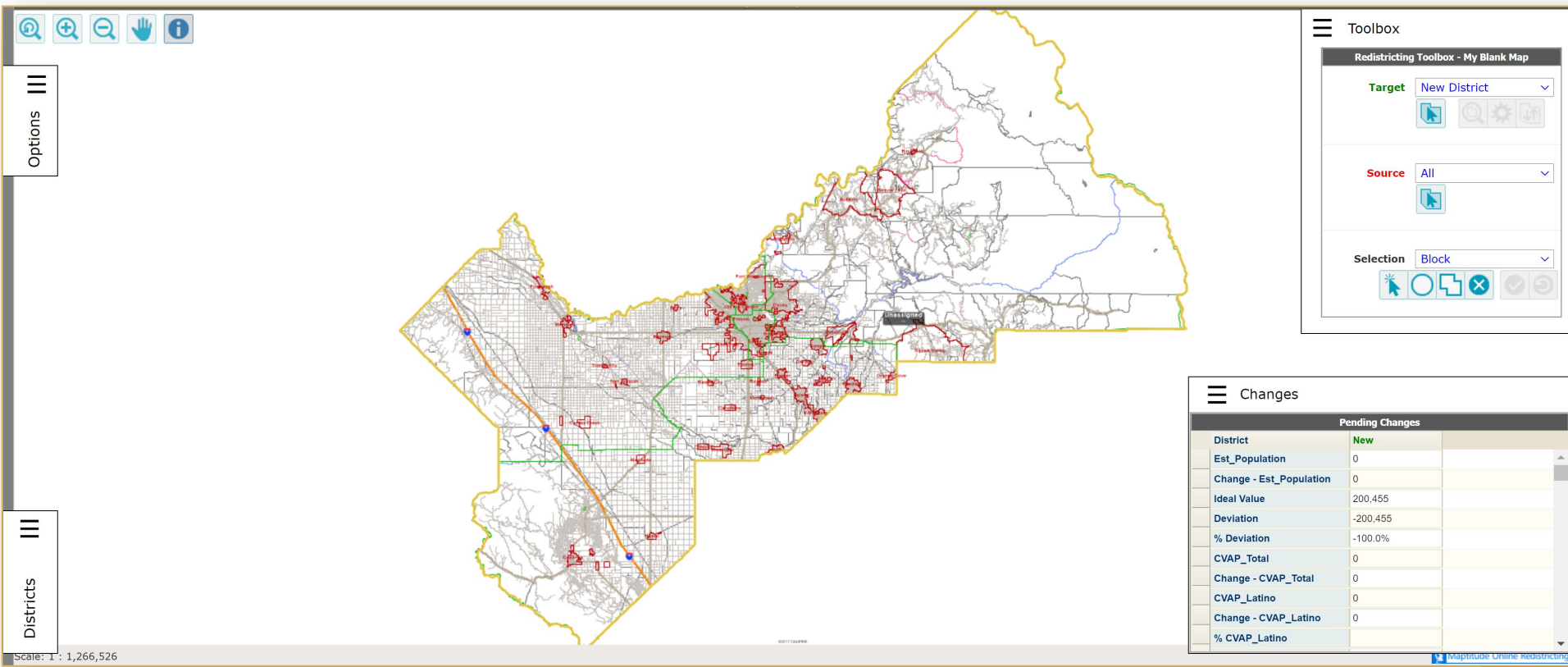
- districtR.org/tag/Fresno
- Also includes simple district-mapping tool; Only available in English
- Similar external options: [Representable.org](https://representable.org), [DrawMyCACommunity.org](https://drawmycacomunity.org)



Caliper's "Maptitude Online Redistricting"

Full Database, Powerful Online Mapping Tool

- <https://inzolia.caliper.com/FresnoCounty/Default.aspx>
- Powerful, common, data-rich online tool
- Six language options: English, Spanish, Portuguese, Vietnamese, Mandarin and Korean



Options

Districts

Scale: 1 : 1,266,526

Toolbox

Redistricting Toolbox - My Blank Map

Target: New District

Source: All

Selection: Block

Changes

Pending Changes	
District	New
Est_Population	0
Change - Est_Population	0
Ideal Value	200,455
Deviation	-200,455
% Deviation	-100.0%
CVAP_Total	0
Change - CVAP_Total	0
CVAP_Latino	0
Change - CVAP_Latino	0
% CVAP_Latino	

Maptitude Online Redistricting

Share Your Thoughts

HOME COMMISSION MEETINGS REDISTRICTING RESOURCES

 FRESNO COUNTY
REDISTRICTING 2021

The County of Fresno is currently initiating the 2021 Redistricting process.

Applications for membership on the advisory commission to the Board were accepted from April 27, 2021 through May 14, 2021, and the commission was selected by the Board of Supervisors on May 25, 2021.

For more information, please contact FresnoCounty2021Redistricting@fresnocountyca.gov.



Website: bit.ly/FresnoCountyRedistricting2021

Phone: 559.600.1221 | **Email:** FresnoCounty2021Redistricting@fresnocountyca.gov

Public Hearings & Workshops

- What is your neighborhood and what are its boundaries?
- What other notable areas are in the County and its cities, and what are their boundaries?

