



FRESNO COUNTY  
**REDISTRICTING 2021**

**County of Fresno**  
**Redistricting Draft Maps**

October 21, 2021

Dr. Jeff Tilton, Senior Consultant  
National Demographics Corporation

# Redistricting Process

---

Step	Description
<b>Pre-Draft Public Hearing</b> August 12, 2021	<ul style="list-style-type: none"> <li>• Advisory Commission Public Hearing; held prior to release of draft maps</li> <li>• Educate, solicit input on the communities in the Districts</li> </ul>
<b>Census Data Releases</b>	<ul style="list-style-type: none"> <li>• Census Bureau releases official 2020 Census population data – Aug. 12</li> <li>• California’s official ‘prisoner-adjusted’ 2020 redistricting data – Sept. 20, 27</li> </ul>
<b>Engagement Workshops</b>	<ul style="list-style-type: none"> <li>• July 14; August 3, 4, 21 (x2); and, September 29</li> </ul>
<b>Pre-Draft Public Hearing</b> October 5, 2021	<ul style="list-style-type: none"> <li>• Advisory Commission Public Hearing; held prior to release of draft maps</li> <li>• Educate, solicit input on the communities in the Districts</li> </ul>
<b>Pre-Draft Public Hearing</b> October 21, 2021	<ul style="list-style-type: none"> <li>• Advisory Commission Public Hearing</li> <li>• Recommend draft maps to Board of Supervisors</li> </ul>
<b>Draft Map Public Hearing</b> November 2, 2021 <i>1 p.m.</i>	<ul style="list-style-type: none"> <li>• Board of Supervisors Public Hearing in the Board Chambers</li> <li>• Discuss, revise the draft maps; discuss the election sequence</li> <li>• Deadline to submit draft maps: October 22, 2021, 5 p.m.</li> </ul>
<b>Draft Map Public Hearing</b> November 16, 2021 <i>1 p.m.</i>	<ul style="list-style-type: none"> <li>• Board of Supervisors Public Hearing in the Board Chambers</li> <li>• Select final map and election sequence</li> <li>• Deadline for maps to be posted to website: November 9, 2021, 5 p.m.</li> </ul>

# Redistricting Rules and Goals

## 1. Federal Laws

- Equal Population
- Federal Voting Rights Act
- No Racial Gerrymandering



## 2. California Criteria for Counties

1. Geographically contiguous
2. Undivided neighborhoods and “communities of interest” (Socio-economic geographic areas that should be kept together)
3. Cities and CDPs
4. Easily identifiable boundaries
5. Compact (Do not bypass one group of people to get to a more distant group of people)

### Prohibited:

“Shall not favor or discriminate against a political party.”

## 3. Other Traditional Redistricting Principles

- Minimize voters shifted to different election years
- Respect voters’ choices / continuity in office
- Future population growth
- Preserving the core of existing districts

# 2020 Census Data

## Fresno County - Current Districts

District		1	2	3	4	5	Total
	Total Pop	205,264	199,107	188,307	185,990	229,862	1,008,530
	Deviation from ideal	3,558	-2,599	-13,399	-15,716	28,156	43,872
	% Deviation	1.76%	-1.29%	-6.64%	-7.79%	13.96%	21.75%
Total Pop	% Hisp	62.5%	34%	66%	77%	34%	54%
	% NH White	16%	45%	13%	16%	41%	27%
	% NH Black	8%	6%	7%	1%	4%	5%
	% Asian-American	12%	12%	12%	4%	17%	12%
Citizen Voting Age Pop	Total	104,729	142,491	100,997	94,210	142,620	585,047
	% Hisp	51%	27%	55%	64%	28%	42%
	% NH White	26%	57%	23%	28%	53%	40%
	% NH Black	11%	5%	8%	1%	4%	6%
	% Asian/Pac. Isl.	10%	10%	12%	5%	14%	11%

# Neighborhoods/Communities of Interest

---

## *Neighborhoods*

1. What is your neighborhood?
2. What are its geographic boundaries?

*In the absence of public testimony, planning records and other similar documents may provide definition.*

## *Communities of Interest*

1. What defines your community?
2. Would this community benefit from being “included within a single district for purposes of its effective and fair representation”?

*Communities of Interest may not include relationships with political parties, incumbents, or political candidates.*

Submissions were edited for clarity and brevity

- 1st/McKinley
- 93608
- 93711
- 93727
- African American communities
- Asian Village: Chestnut (West), Kings Canyon (South), Clovis (East)
- Baroda
- Biola
- Blackstone Corridor
- Buchanan
- Buchanan High area
- Bullard Community Plan area
- Calwa
- Cantua Creek
- Caruthers
- Center of Fresno
- Central District
- Central Fresno
- Central Fresno/North Fresno
- Central Southeast Area Specific Plan
- Central Unified
- Chinatown
- Clovis
- Clovis East
- Clovis High area
- Clovis Library
- Clovis North High area
- Clovis to the foothills (east)
- Clovis Unified
- Clovis West
- Clovis West High area
- Coalinga
- Communities with a Community Plan
- County Islands within city limits
- County Service Areas (CSAs)
- Cultural Arts District
- Del Rey (Southeast Fresno)
- District 2 as is
- Districts according to Police Departments
- Downtown Fresno
- Downtown Fresno, 93721, 93706, 93726
- East of CA 41
- East of CA 99
- East side Fresno, Kings Canyon
- East vs. Urban
- Easton
- El Dorado Park
- El Porvenir
- European Quarter (Willow and Shepherd in Clovis)
- Farmworking community, Cedar and Butler
- Fig Garden
- Fig Garden and Pinedale
- Fig Garden Loop
- Fig Garden, Fort Washington, Bullard
- Firebaugh
- First & McKinley – City of Fresno, Romain Park Area
- Five Points
- Foothill and mountain areas
- Foothills
- Fowler
- Fresno
- Fresno County Rural Transit’s Westside routes
- Fresno State neighborhoods
- Fresno Unified
- Friant
- Heritage Grove
- Herndon
- Highway City
- Historic Districts
- Hoover Community Plan area
- Hoover High area
- Huntington Boulevard
- Huron
- Jane Addams neighborhood (“Addams”)
- Jefferson neighborhood
- Jensen and Elm
- Kerman
- Kings Canyon corridors
- Kingsburg
- Lanare
- Laton
- Lawless Elementary neighborhood
- Loma Vista
- Lowell-Jefferson Neighborhood
- Malaga
- Mayfair (“Lake Don Pedro”)
- Melody Park Area
- Mendota
- Minkler and Centerville
- Muscatel/West Central Fresno
- North Central Fresno
- North Clovis
- North Fresno
- North Fresno, separate from Clovis
- North of Shields
- North Redlands
- Northeast Fresno
- Northwest Fresno
- Old Fig Garden
- Old Fig Garden and Van Ness
- Old West
- Orange Cove
- Parlier
- Pinedale
- Punjabi community west side of 99
- Raisin City
- Reedley
- Riverdale
- Rural communities
- San Joaquin
- Sanger
- Sanger Unified
- School attendance boundaries
- School District: Central
- School District: Clovis
- School District: Fresno
- Selma
- Selma-Kingsburg-Fowler-County-Sanitation-District
- Shaver/Foothills
- South-Central Specific Plan Area (“Industrial Triangle”)
- South County
- South Tower
- Southeast Fresno
- Southeast Regional Disposal Site (SERDS)
- Southwest Fresno
- Southwest Fresno (Westside)
- Southwest Fresno Specific Plan
- Summerset Apartments
- Sunnyside
- Sunnyside, Kings Canyon, Olive Street
- Tarpey Village in Clovis
- Tombstone
- Tower District
- Train Line: Chinatown, Downtown Fresno, Lower and Central
- Tranquility
- Unincorporated rural communities
- Van Ness Extension (Sierra Sky Park, SJ River Bluffs)
- Water Works Districts (WWDs)
- West Area Neighborhoods Specific Plan
- West County
- West Fresno
- West Fresno, Vang Pao Elementary
- West Fresno, west of 99
- West Fresno/Central Area
- West Hills Community College District
- West of CA 41
- West of CA 99
- West of Fresno
- West of Fresno State
- West Park
- Westlands Water District
- Westside
- Woodpark Community Plan area
- Woodward Lake/Fort Washington
- Woodward Park

# The Maps

---

**Total: 22**

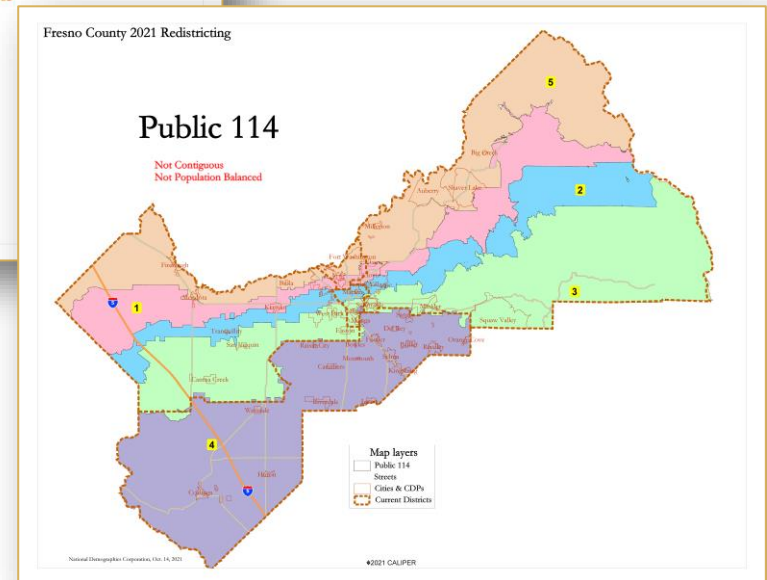
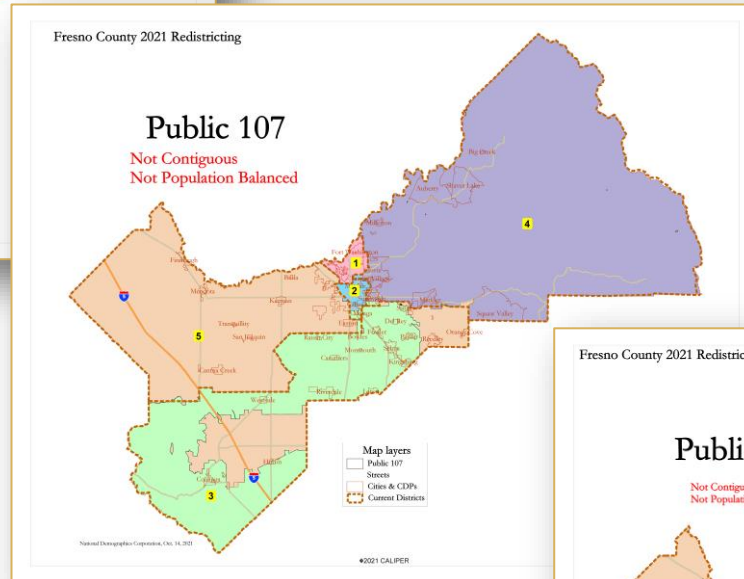
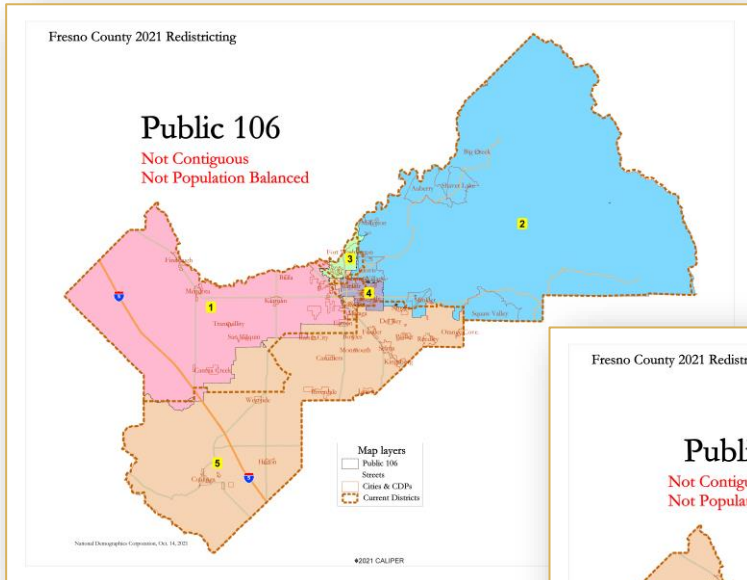
**Public submitted: 19**

**NDC produced: 3**

**Compliant: 19**

**Noncompliant: 3**

# Noncompliant Maps

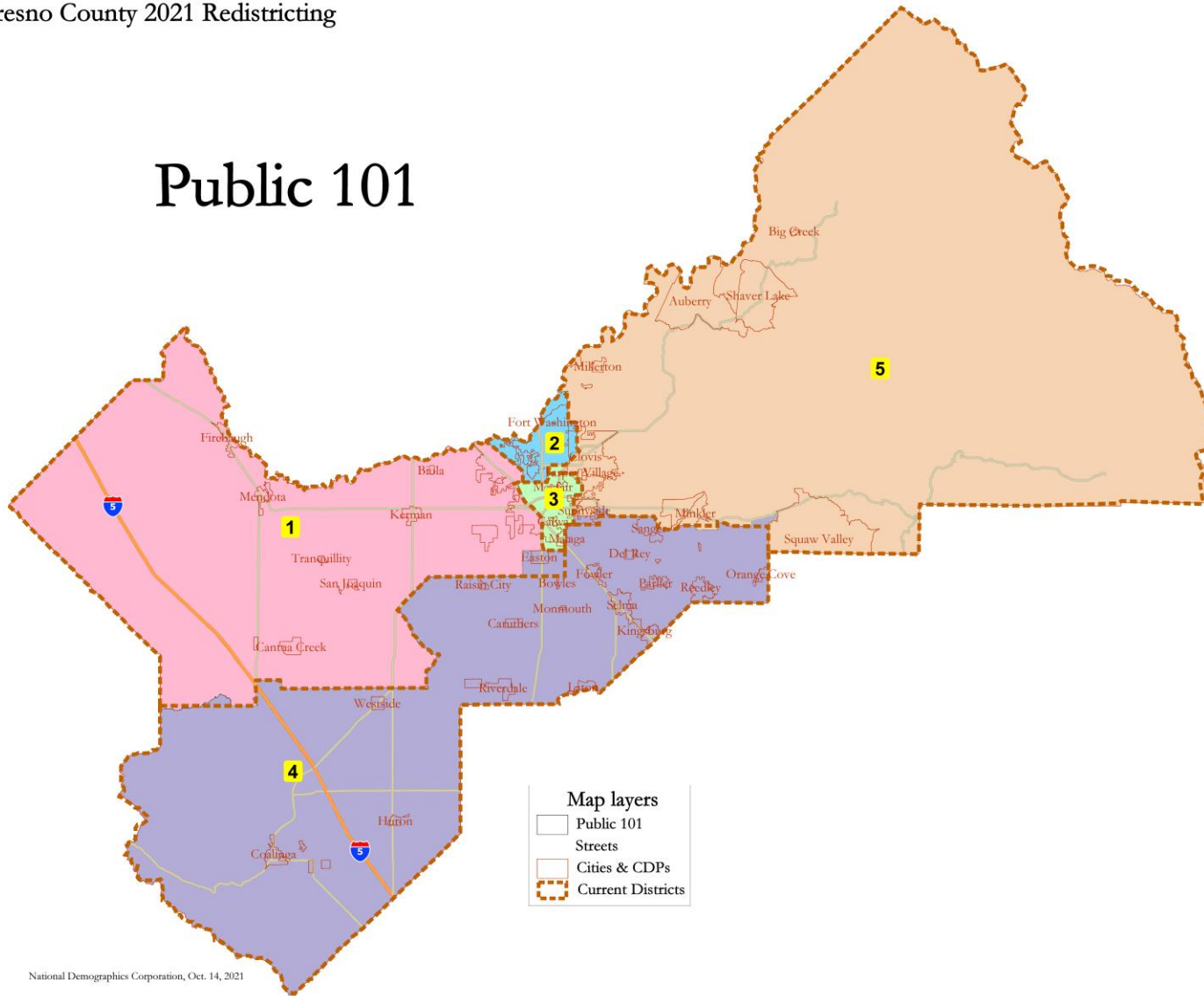




# Public Map 101

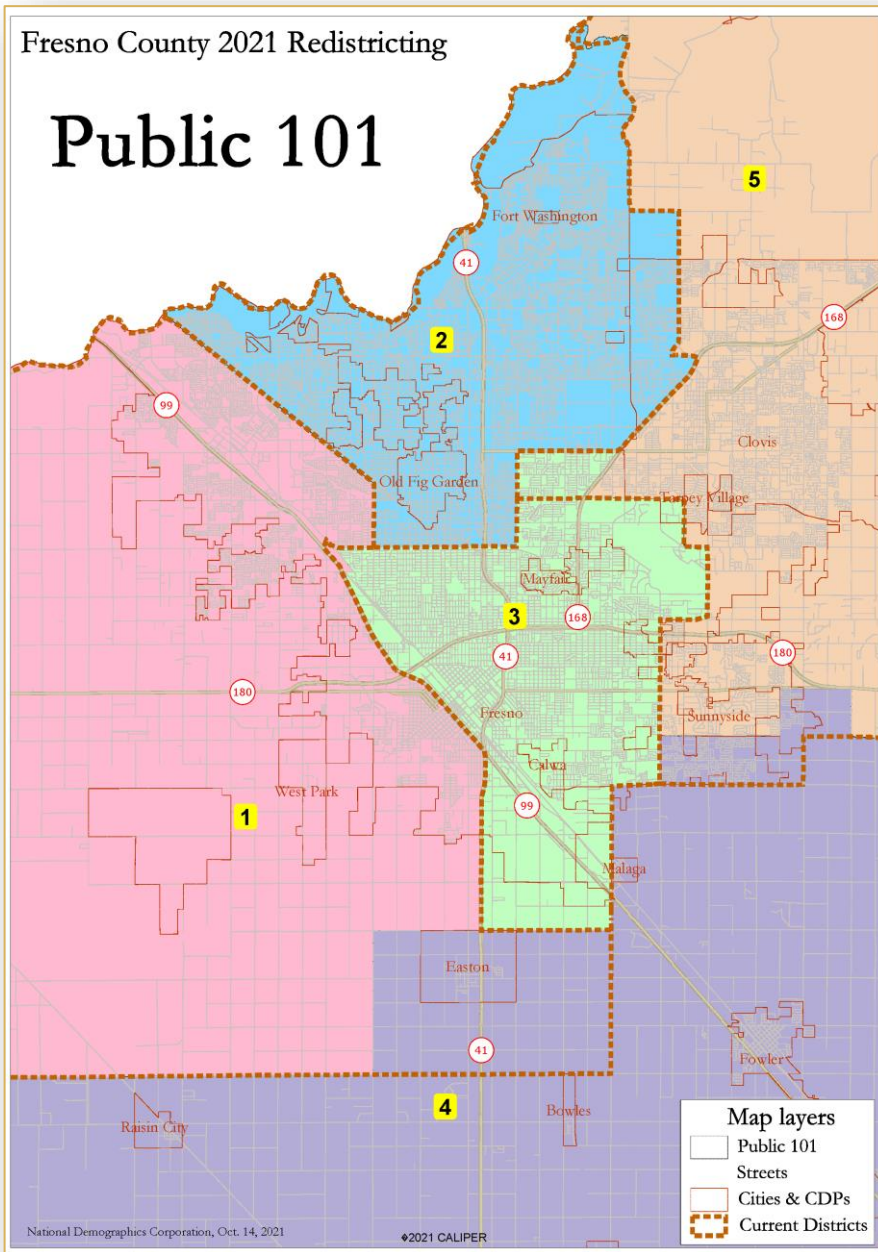
Fresno County 2021 Redistricting

## Public 101



National Demographics Corporation, Oct. 14, 2021

# Public Map 101



Fresno County Public 101							
District	1	2	3	4	5	Total	
Total Pop	201,025	199,107	202,897	209,353	196,148	1,008,530	
Deviation from ideal	-681	-2,599	1,191	7,647	-5,558	13,205	
% Deviation	-0.34%	-1.29%	0.59%	3.79%	-2.76%	6.55%	
% Hisp	62.5%	34%	65%	74%	32%	54%	
% NH White	15%	45%	14%	16%	45%	27%	
% NH Black	8%	6%	7%	1%	3%	5%	
% Asian-American	12%	12%	12%	7%	15%	12%	
Citizen Voting Age Pop	102,147	142,491	111,066	106,149	123,195	585,047	
% Hisp	51%	27%	54%	61%	27%	42%	
% NH White	26%	57%	24%	28%	57%	40%	
% NH Black	11%	5%	8%	1%	3%	6%	
% Asian/Pac Isl.	11%	10%	12%	8%	12%	11%	
Voter Registration (Nov 2020)	87,762	122,649	85,100	91,307	117,162	503,980	
% Latino est.	50%	25%	55%	61%	25%	41%	
% Spanish-Surnamed	47%	24%	51%	57%	23%	38%	
% Asian-Surnamed	6%	5%	3%	5%	5%	5%	
% Filipino-Surnamed	1%	1%	1%	1%	1%	1%	
% NH White est.	30%	64%	32%	32%	67%	48%	
% NH Black	14%	4%	11%	2%	3%	6%	
Voter Turnout (Nov 2020)	58,299	98,178	50,954	64,947	93,833	366,211	
% Latino est.	48%	23%	53%	56%	23%	37%	
% Spanish-Surnamed	45%	22%	49%	53%	21%	35%	
% Asian-Surnamed	6%	5%	3%	5%	5%	5%	
% Filipino-Surnamed	1%	1%	1%	1%	1%	1%	
% NH White est.	32%	67%	34%	36%	69%	52%	
% NH Black	13%	4%	10%	2%	3%	5%	
Voter Turnout (Nov 2018)	36,836	71,892	32,161	43,504	83,436	247,829	
% Latino est.	44%	19%	49%	52%	20%	33%	
% Spanish-Surnamed	42%	18%	46%	49%	19%	31%	
% Asian-Surnamed	5%	4%	2%	4%	4%	4%	
% Filipino-Surnamed	1%	1%	1%	1%	1%	1%	
% NH White est.	35%	71%	37%	41%	73%	56%	
% NH Black est.	13%	4%	9%	1%	2%	5%	
ACS Pop. Est.	197,062	200,621	195,392	206,299	181,895	981,270	
Age	age0-19	34%	27%	32%	34%	30%	31%
	age20-60	52%	51%	54%	51%	50%	52%
	age60plus	13%	22%	14%	16%	20%	17%
Immigration	immigrants	27%	14%	23%	28%	13%	21%
	naturalized	33%	58%	36%	32%	63%	41%
Language spoken at home	english	45%	74%	44%	41%	74%	55%
	spanish	44%	15%	45%	54%	14%	35%
	asian-lang	5%	6%	9%	2%	8%	6%
	other lang	6%	5%	2%	3%	4%	4%
Language Fluency	Speaks Eng. "Less than Very Well"	27%	8%	23%	26%	8%	19%
	hs-grad	47%	43%	47%	46%	49%	46%
	bachelor	9%	23%	8%	10%	19%	14%
	graduatedegree	3%	14%	3%	4%	10%	7%
Child in Household	child-under18	47%	31%	41%	47%	38%	40%
Pct of Pop. Age 16+	employed	62%	63%	58%	61%	62%	61%
Household Income	income 0-25k	27%	17%	36%	25%	15%	24%
	income 25-50k	26%	18%	27%	26%	19%	23%
	income 50-75k	19%	18%	16%	17%	16%	17%
	income 75-200k	26%	39%	18%	29%	42%	31%
	income 200k-plus	2%	9%	1%	3%	8%	5%
Housing Stats	single family	75%	71%	60%	83%	83%	74%
	multi-family	25%	29%	40%	17%	17%	26%
	rented	52%	43%	64%	44%	32%	47%
	owned	48%	57%	36%	56%	68%	53%

Total population data from the 2020 Decennial Census

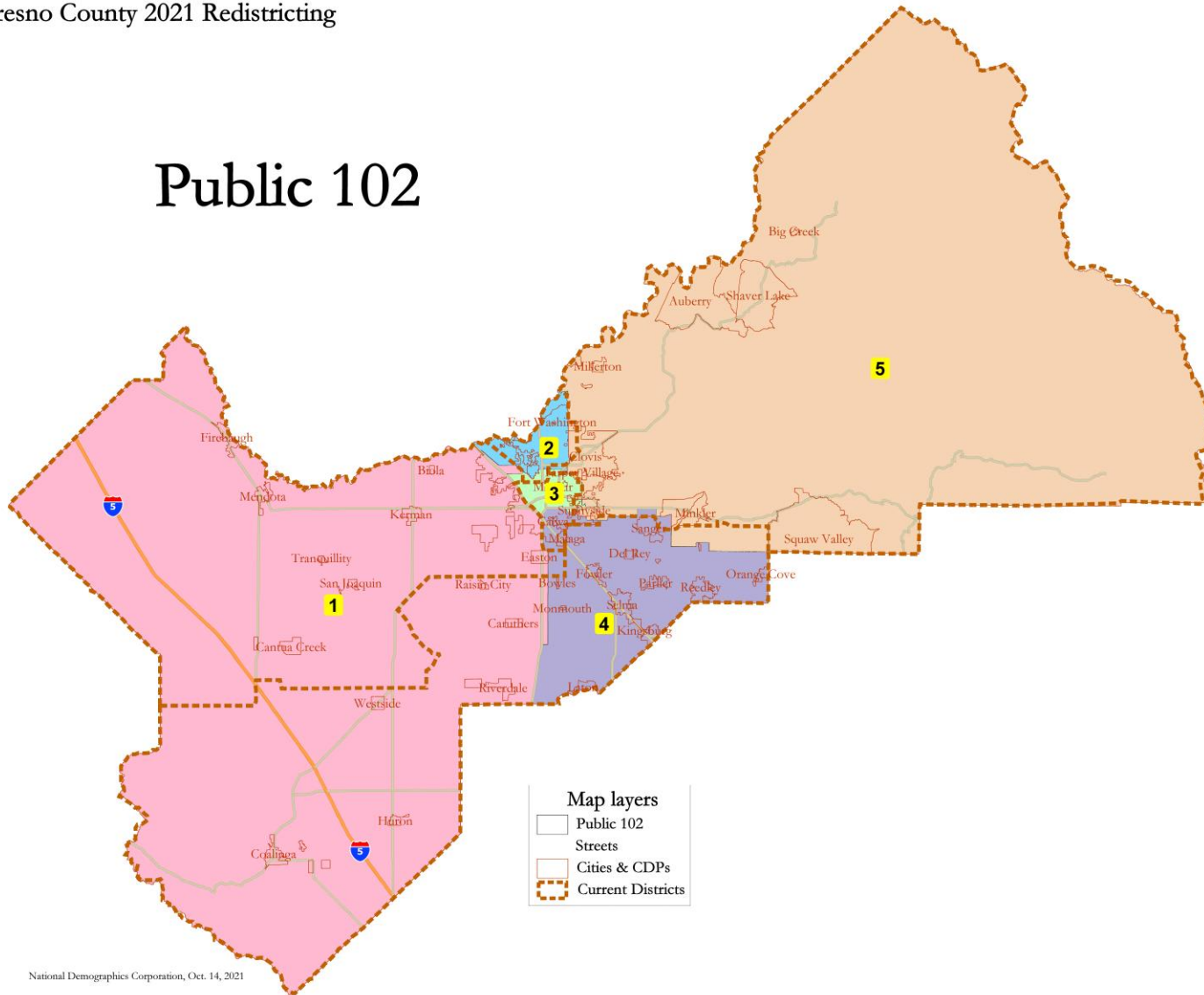
Surname-based Voter Registration and Turnout data from the California Statewide Database

Latino voter registration and turnout data are Spanish-surname counts adjusted using Census Population Department under-court estimates. NH White and NH Black registration and turnout counts estimated by NDC. Citizen Voting Age Pop., Age, Immigration, and other demographics from the 2015-2019 American Community Survey and Special Tabulation 5-year data.

# Public Map 102

Fresno County 2021 Redistricting

## Public 102

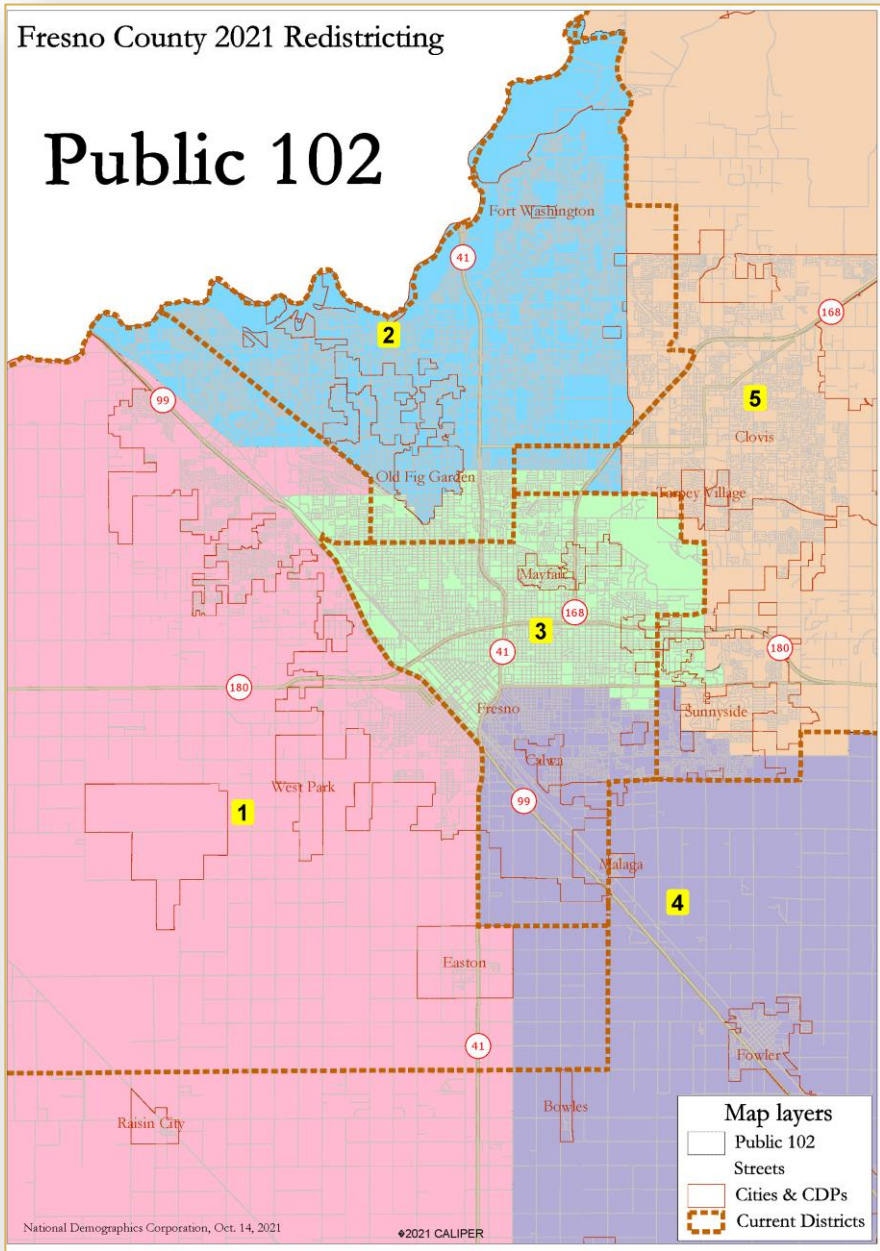


National Demographics Corporation, Oct. 14, 2021

# Public Map 102

Fresno County 2021 Redistricting

## Public 102



Fresno County - Public 102							
District	1	2	3	4	5	Total	
Total Pop	201,691	201,703	201,722	201,704	201,710	1,008,530	
Deviation from ideal	-15	-3	16	-2	4	31	
% Deviation	-0.01%	0.00%	0.01%	0.00%	0.00%	0.00%	0.02%
% Hisp	67.7%	34%	62%	74%	30%	54%	
% NH White	14%	43%	16%	14%	47%	27%	
% NH Black	6%	6%	7%	2%	3%	5%	
% Asian-American	9%	13%	11%	8%	15%	12%	
Citizen Voting Age Pop	97,703	143,688	113,189	103,476	126,991	585,047	
% Hisp	54%	27%	51%	63%	25%	42%	
% NH White	26%	55%	27%	23%	59%	40%	
% NH Black	9%	6%	9%	2%	3%	6%	
% Asian/Pac. Isl.	9%	11%	11%	9%	12%	11%	
Voter Registration (Nov 2020)	82,978	122,858	85,859	88,763	123,522	503,980	
% Latino est.	54%	26%	52%	64%	24%	41%	
% Spanish-Surnamed	50%	24%	48%	59%	22%	38%	
% Asian-Surnamed	5%	6%	3%	5%	5%	5%	
% Filipino-Surnamed	1%	1%	1%	1%	1%	1%	
% NH White est.	29%	63%	35%	28%	68%	48%	
% NH Black	12%	5%	10%	4%	3%	6%	
Voter Turnout (Nov 2020)	54.483	98.545	52.101	60.965	100.117	366.211	
% Latino est.	50%	24%	50%	60%	22%	37%	
% Spanish-Surnamed	47%	22%	47%	56%	21%	35%	
% Asian-Surnamed	6%	6%	3%	5%	5%	5%	
% Filipino-Surnamed	1%	1%	1%	1%	1%	1%	
% NH White est.	32%	65%	37%	32%	69%	52%	
% NH Black	11%	5%	9%	3%	3%	5%	
Voter Turnout (Nov 2018)	34.727	71.191	32.846	40.766	68.099	247.629	
% Latino est.	46%	20%	45%	55%	19%	33%	
% Spanish-Surnamed	44%	19%	43%	52%	18%	31%	
% Asian-Surnamed	5%	5%	2%	4%	4%	4%	
% Filipino-Surnamed	1%	1%	1%	1%	1%	1%	
% NH White est.	35%	69%	41%	36%	73%	56%	
% NH Black est.	11%	4%	9%	3%	2%	5%	
ACS Pop. Est.	198,580	200,038	195,386	201,353	185,913	981,270	
Age	age0-19	34%	26%	33%	34%	30%	31%
	age20-60	51%	53%	53%	50%	50%	52%
	age60plus	14%	21%	14%	16%	20%	17%
Immigration	immigrants	29%	15%	21%	28%	13%	21%
	naturalized	30%	59%	38%	34%	64%	41%
Language spoken at home	english	41%	73%	49%	38%	76%	55%
	spanish	50%	14%	41%	55%	13%	35%
	asian-lang	4%	6%	8%	4%	7%	6%
	other lang	5%	7%	2%	3%	4%	4%
Language Fluency	Speaks Eng. "Less than Very Well"	30%	8%	20%	27%	7%	19%
Education (among those age 25+)	hs-grad	45%	43%	49%	46%	48%	46%
	bachelor	8%	24%	8%	9%	20%	14%
	graduateddegree	2%	14%	3%	4%	11%	7%
Child in Household	child-under18	48%	31%	41%	47%	38%	40%
Pct of Pop. Age 16+	employed	60%	65%	58%	60%	64%	61%
Household Income	income 0-25k	28%	16%	38%	27%	13%	24%
	income 25-50k	26%	20%	26%	27%	18%	23%
	income 50-75k	19%	19%	16%	17%	16%	17%
	income 75-200k	25%	38%	18%	27%	45%	31%
	income 200k-plus	2%	8%	1%	2%	9%	5%
Housing Stats	single family	79%	70%	59%	80%	86%	74%
	multi-family	21%	30%	41%	20%	14%	26%
	rented	52%	44%	64%	46%	30%	47%
	owned	48%	56%	36%	54%	70%	53%

Total population data from the 2020 Decennial Census

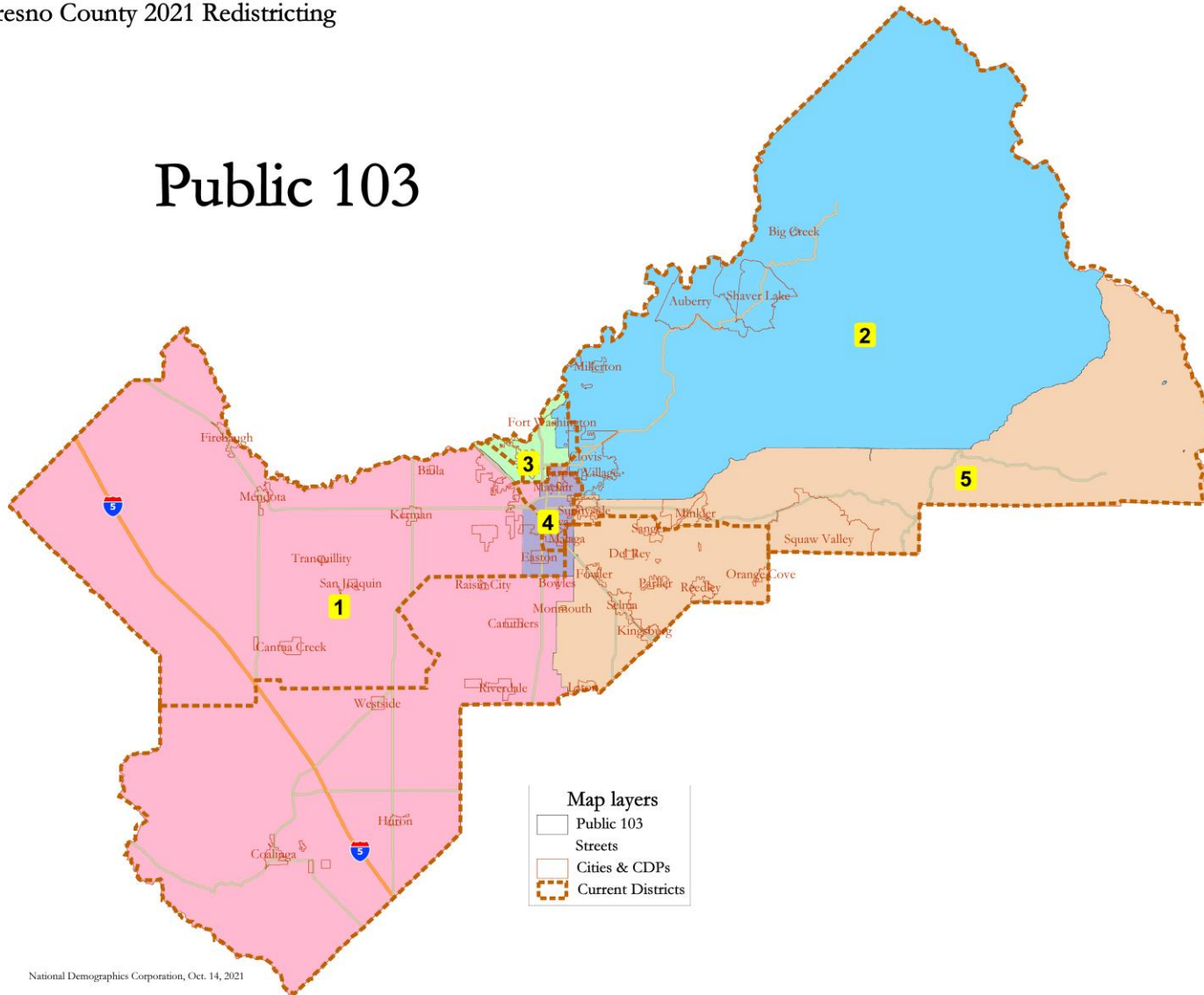
Surname-based Voter Registration and Turnout data from the California Statewide Database

Latino voter registration and turnout data are Spanish-surname counts adjusted using Census Population Department undercount estimates. NH White and NH Black registration and turnout counts estimated by NDC. Citizen Voting Age Pop., Age, Immigration, and other demographics from the 2015-2019 American Community Survey and Special Tabulation 5-year data.

# Public Map 103

Fresno County 2021 Redistricting

## Public 103

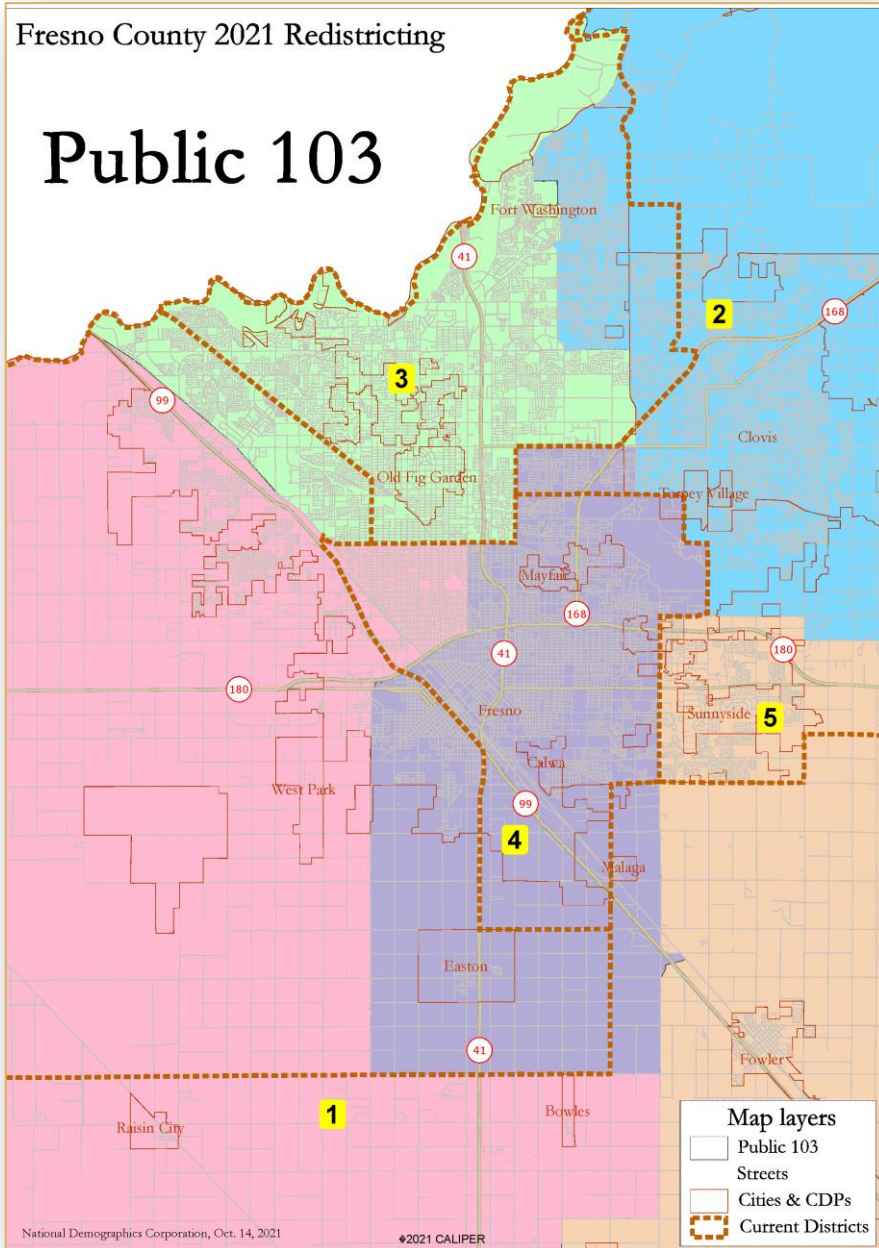


National Demographics Corporation, Oct. 14, 2021

# Public Map 103

Fresno County 2021 Redistricting

## Public 103



Fresno County Public 103							
District	1	2	3	4	5	Total	
Total Pop	194,792	207,057	198,581	200,030	199,070	1,008,530	
Deviation from ideal	-6,914	5,351	-3,125	7,324	-2,636	14,238	
% Deviation	-3.43%	2.65%	-1.55%	3.63%	-1.31%	7.06%	
Total Pop	% Hisp	67.2%	27%	41%	66%	68%	54%
	% NH White	17%	50%	38%	11%	18%	27%
	% NH Black	4%	3%	7%	8%	2%	5%
	% Asian-American	9%	16%	10%	12%	10%	12%
	Total	99,592	131,892	139,719	108,270	105,603	585,047
Citizen Voting Age Pop	% Hisp	54%	23%	32%	55%	57%	42%
	% NH White	31%	61%	51%	20%	29%	40%
	% NH Black	6%	3%	8%	10%	2%	6%
	% Asian-Pac Isl	8%	12%	9%	13%	11%	11%
	Total	83,202	129,282	114,983	83,098	92,535	503,980
Voter Registration (Nov 2020)	% Latino est.	54%	22%	31%	55%	56%	41%
	% Spanish-Surnamed	50%	20%	29%	51%	52%	38%
	% Asian-Surnamed	5%	6%	4%	3%	5%	5%
	% Filipino-Surnamed	1%	1%	1%	1%	1%	1%
	% NH White est.	35%	69%	57%	27%	36%	48%
	% NH Black	6%	3%	7%	15%	2%	6%
Voter Turnout (Nov 2020)	Total	56,784	106,133	88,191	48,344	66,759	366,211
	% Latino est.	50%	20%	26%	54%	53%	37%
	% Spanish-Surnamed	47%	19%	26%	50%	49%	35%
	% Asian-Surnamed	6%	6%	4%	3%	5%	5%
	% Filipino-Surnamed	1%	1%	1%	1%	1%	1%
	% NH White est.	37%	71%	60%	29%	39%	52%
Voter Turnout (Nov 2018)	% NH Black	6%	2%	6%	14%	2%	5%
	Total	36,720	72,508	63,503	30,116	44,776	247,629
	% Latino est.	45%	17%	24%	50%	48%	33%
	% Spanish-Surnamed	43%	16%	22%	48%	45%	31%
	% Asian-Surnamed	5%	4%	4%	3%	4%	4%
	% Filipino-Surnamed	1%	1%	1%	1%	1%	1%
ACS Pop. Est.	% NH White est.	42%	74%	65%	31%	44%	56%
	% NH Black est.	5%	2%	6%	14%	2%	5%
	Total	193,457	191,470	200,514	199,960	195,889	981,270
Age	age0-19	33%	29%	27%	34%	34%	31%
	age20-60	53%	51%	52%	52%	50%	52%
	age60plus	14%	20%	21%	14%	16%	17%
Immigration	immigrants	28%	13%	14%	25%	25%	21%
	naturalized	29%	64%	54%	37%	37%	41%
Language spoken at home	english	43%	77%	71%	41%	44%	55%
	spanish	48%	11%	19%	47%	48%	35%
	asian-lang	3%	7%	5%	10%	4%	6%
	other lang	5%	5%	5%	2%	3%	4%
Language Fluency	Speaks Eng. "Less than Very Well"	28%	7%	10%	25%	23%	19%
Education (among those age 25+)	hs-grad	45%	45%	47%	47%	47%	46%
	bachelor	9%	23%	20%	7%	11%	14%
	graduatedegree	3%	13%	11%	2%	5%	7%
Child in Household	child-under18	46%	38%	32%	44%	47%	40%
Pct of Pop. Age 16+	employed	62%	64%	63%	56%	61%	61%
	income 0-25k	26%	12%	20%	40%	24%	24%
Household Income	income 25-50k	26%	17%	22%	26%	25%	23%
	income 50-75k	19%	16%	19%	16%	16%	17%
	income 75-200k	26%	46%	33%	17%	31%	31%
	income 200k-plus	3%	10%	6%	1%	3%	5%
	single family	79%	84%	67%	60%	82%	74%
Housing Stats	multi-family	21%	16%	33%	40%	18%	26%
	rented	50%	31%	48%	66%	40%	47%
	owned	50%	69%	52%	34%	60%	53%

Total population data from the 2020 Decennial Census.

Surname-based Voter Registration and Turnout data from the California Statewide Database.

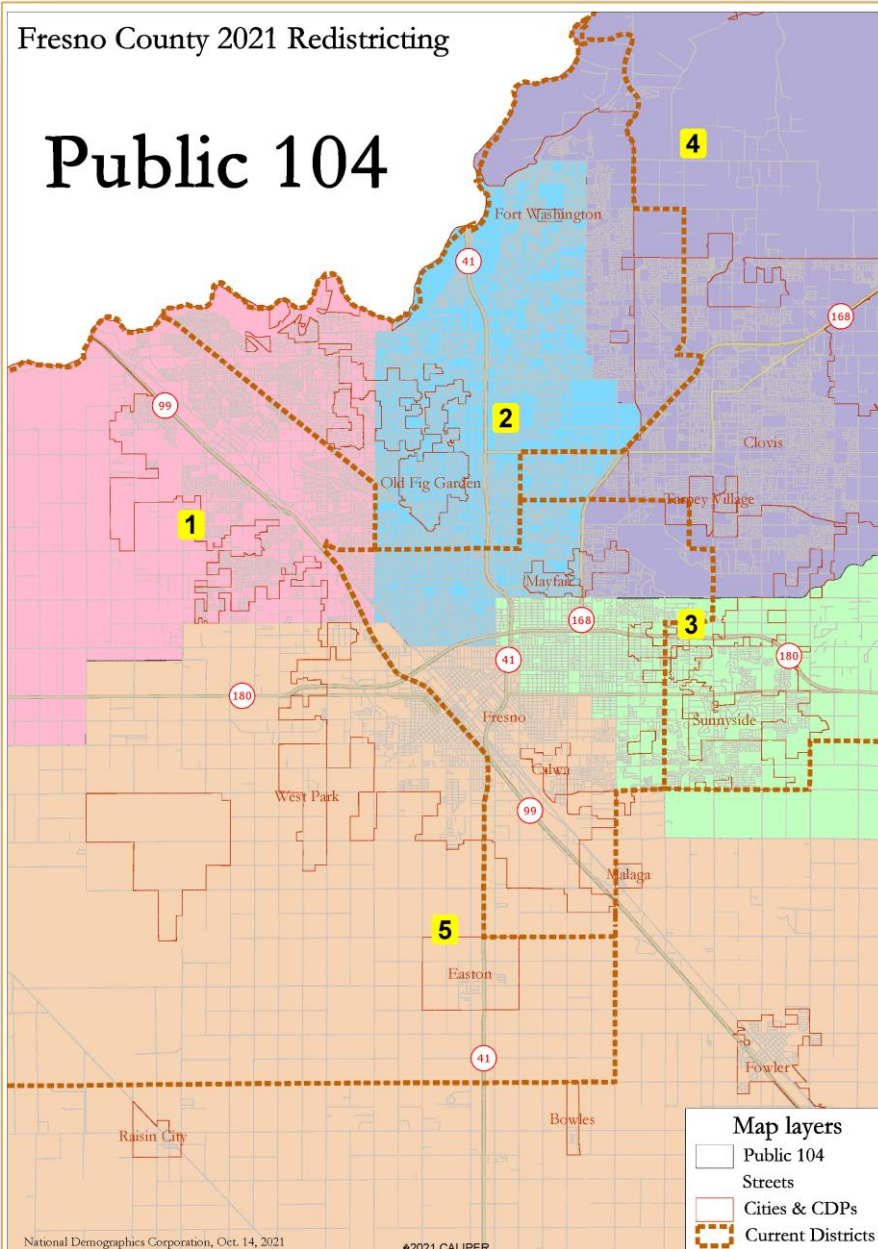
Latino voter registration and turnout data are Spanish-surname counts adjusted using Census Population Department undercount estimates. NH White and NH Black registration and turnout counts estimated by NDC. Citizen Voting Age Pop., Age, Immigration, and other demographics from the 2015-2019 American Community Survey and Special Tabulation 5-year data.



# Public Map 104

Fresno County 2021 Redistricting

## Public 104



Fresno County Public 104

District	1	2	3	4	5	Total
Total Pop	197,864	198,527	200,773	209,448	202,118	1,008,530
Deviation from ideal	-4,042	-3,179	-933	7,742	412	11,784
% Deviation	-2.00%	-1.58%	-0.46%	3.84%	0.20%	5.84%
% Hisp	56.8%	45%	64%	30%	72%	54%
% NH White	22%	35%	16%	47%	14%	27%
% NH Black	6%	7%	3%	3%	5%	5%
% Asian-American	12%	10%	14%	16%	6%	12%
Citizen Voting Age Pop	109,583	137,893	103,143	131,875	102,752	585,047
% Hisp	44%	36%	53%	25%	60%	42%
% NH White	35%	48%	27%	58%	24%	40%
% NH Black	8%	7%	4%	3%	7%	6%
% Asian/Pac Isl.	11%	8%	15%	12%	7%	11%
Voter Registration (Nov 2020)	95,275	110,033	89,333	127,231	82,108	503,980
% Latino est.	45%	35%	54%	24%	58%	41%
% Spanish-Sumamed	41%	32%	50%	22%	54%	38%
% Asian-Sumamed	6%	3%	5%	6%	4%	5%
% Filipino-Sumamed	1%	1%	1%	1%	1%	1%
% NH White est.	40%	55%	35%	67%	28%	48%
% NH Black	8%	6%	5%	3%	10%	6%
Voter Turnout (Nov 2020)	68,649	81,282	60,151	102,836	53,293	366,211
% Latino est.	42%	31%	51%	22%	54%	37%
% Spanish-Sumamed	39%	29%	48%	20%	50%	35%
% Asian-Sumamed	7%	3%	5%	5%	4%	5%
% Filipino-Sumamed	1%	1%	1%	1%	1%	1%
% NH White est.	44%	59%	39%	69%	33%	52%
% NH Black	8%	5%	5%	3%	8%	5%
Voter Turnout (Nov 2018)	45,890	57,356	39,651	69,451	35,281	247,628
% Latino est.	36%	26%	47%	19%	49%	33%
% Spanish-Sumamed	34%	25%	44%	18%	47%	31%
% Asian-Sumamed	5%	3%	4%	4%	4%	4%
% Filipino-Sumamed	1%	1%	1%	1%	1%	1%
% NH White est.	49%	64%	43%	73%	37%	56%
% NH Black est.	7%	5%	4%	3%	8%	5%
ACS Pop. Est.	194,821	200,342	193,608	193,265	199,234	981,270
Age						
age0-19	32%	28%	35%	30%	33%	31%
age20-80	52%	54%	50%	51%	51%	52%
age60plus	16%	19%	16%	19%	15%	17%
Immigration						
immigrants	25%	14%	26%	13%	27%	21%
naturalized	37%	49%	39%	63%	31%	41%
Language spoken at home						
english	52%	67%	42%	76%	40%	55%
spanish	36%	24%	46%	12%	54%	35%
asian-lang	4%	6%	9%	8%	3%	6%
other lang	7%	3%	3%	5%	3%	4%
Language Fluency						
Speaks Eng. "Less than Very Well"	23%	10%	24%	8%	28%	19%
Education (among those age 25+)						
hs-grad	47%	47%	46%	46%	45%	46%
bachelor	13%	18%	10%	21%	7%	14%
graduatedegree	6%	10%	4%	12%	3%	7%
Child in Household	43%	32%	47%	38%	46%	40%
Pct of Pop. Age 16+						
employed	63%	64%	59%	64%	56%	61%
Household Income						
income 0-25k	21%	24%	29%	14%	32%	24%
income 25-50k	25%	22%	25%	18%	26%	23%
income 50-75k	19%	18%	16%	16%	17%	17%
income 75-200k	30%	30%	27%	44%	22%	31%
income 200k-plus	5%	5%	3%	8%	2%	5%
Housing Stats						
single family	76%	65%	75%	81%	76%	74%
multi-family	24%	35%	25%	19%	24%	26%
rented	45%	53%	47%	34%	55%	47%
owned	55%	47%	53%	66%	45%	53%

Total population data from the 2020 Decennial Census.

Surname-based Voter Registration and Turnout data from the California Statewide Database.

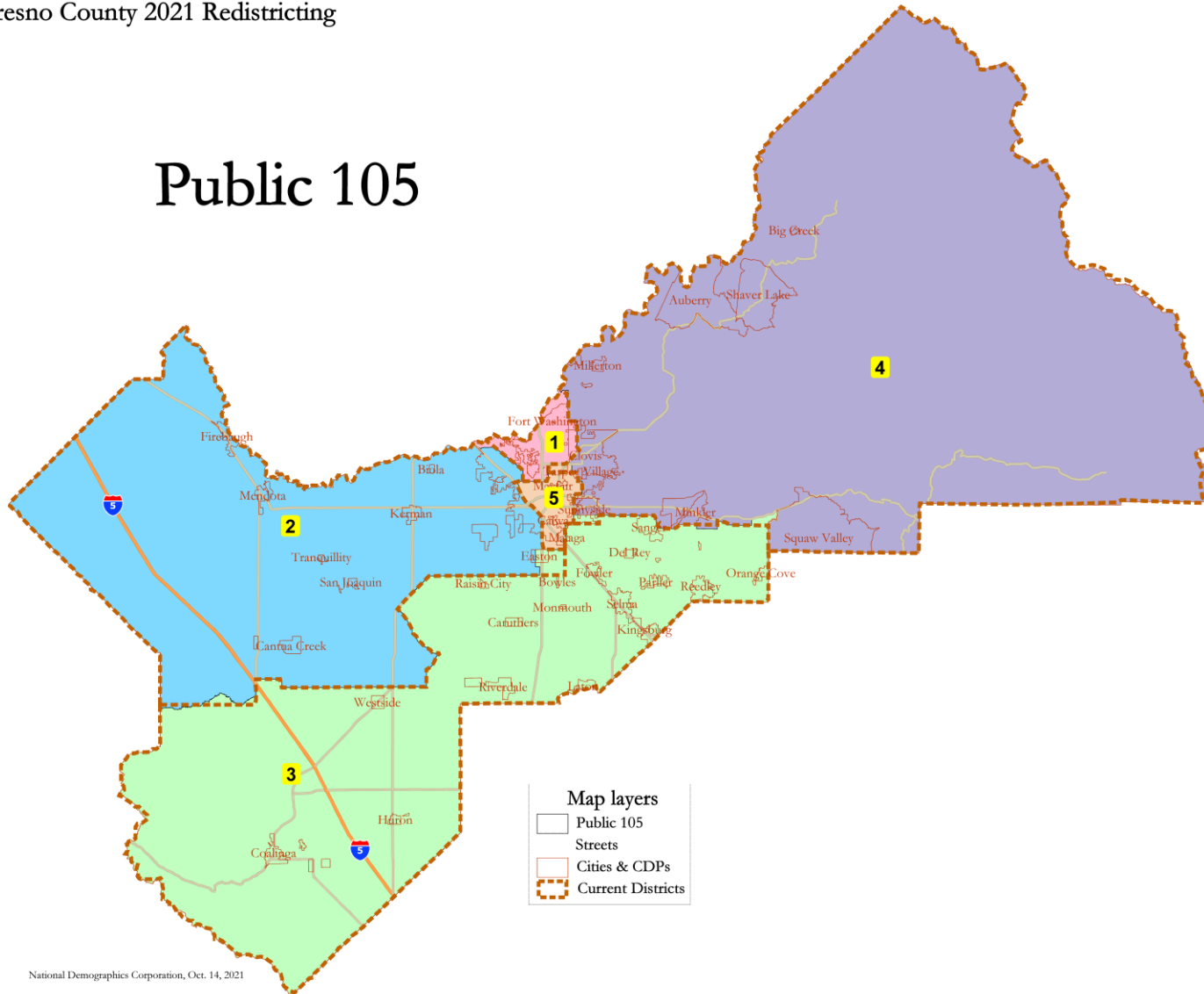
Latino voter registration and turnout data are Spanish-surname counts adjusted using Census Population Department undercount estimates. NH White and NH Black registration and turnout counts estimated by NDC. Citizen Voting Age Pop., Age, Immigration, and other demographics from the 2015-2019 American Community Survey and Special Tabulation 5-year data.



# Public Map 105

Fresno County 2021 Redistricting

## Public 105

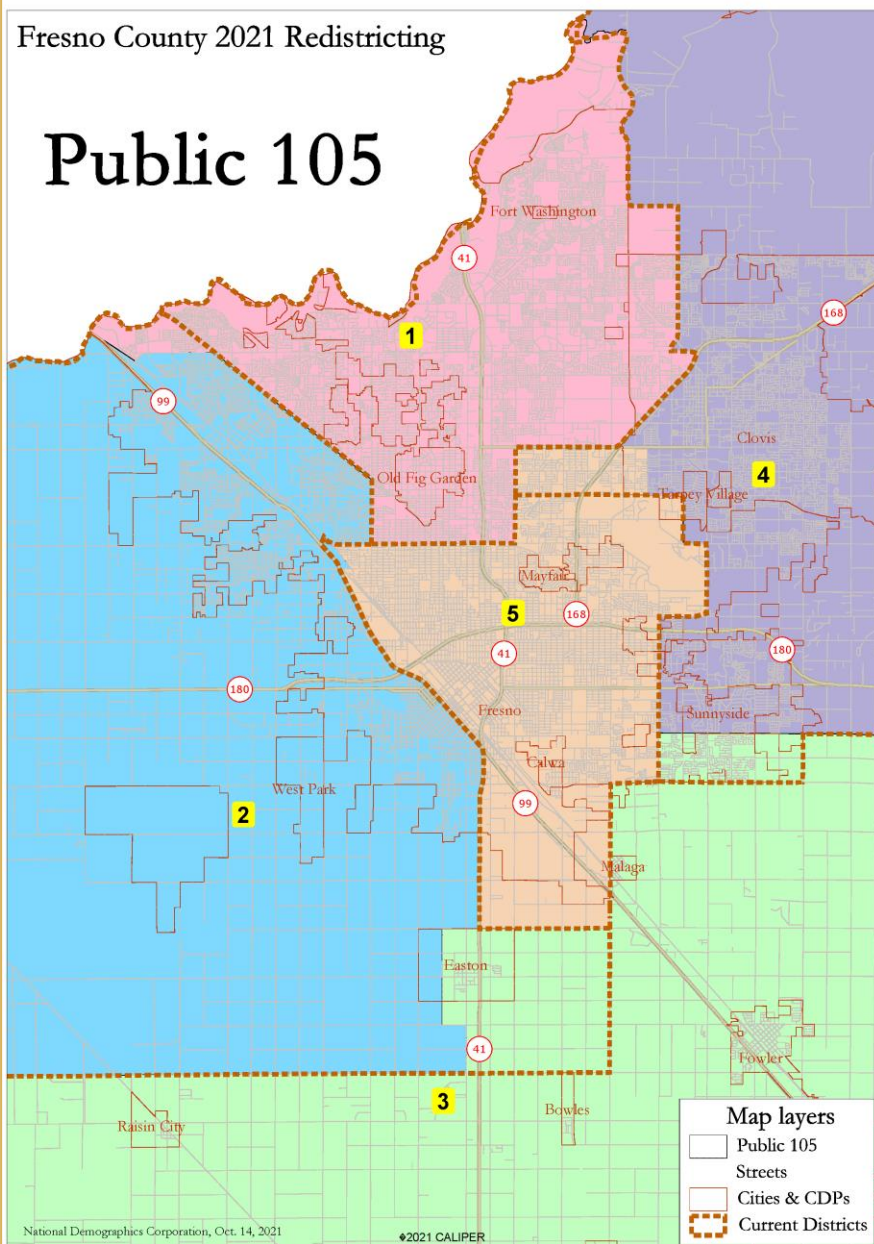


National Demographics Corporation, Oct. 14, 2021

# Public Map 105

Fresno County 2021 Redistricting

## Public 105



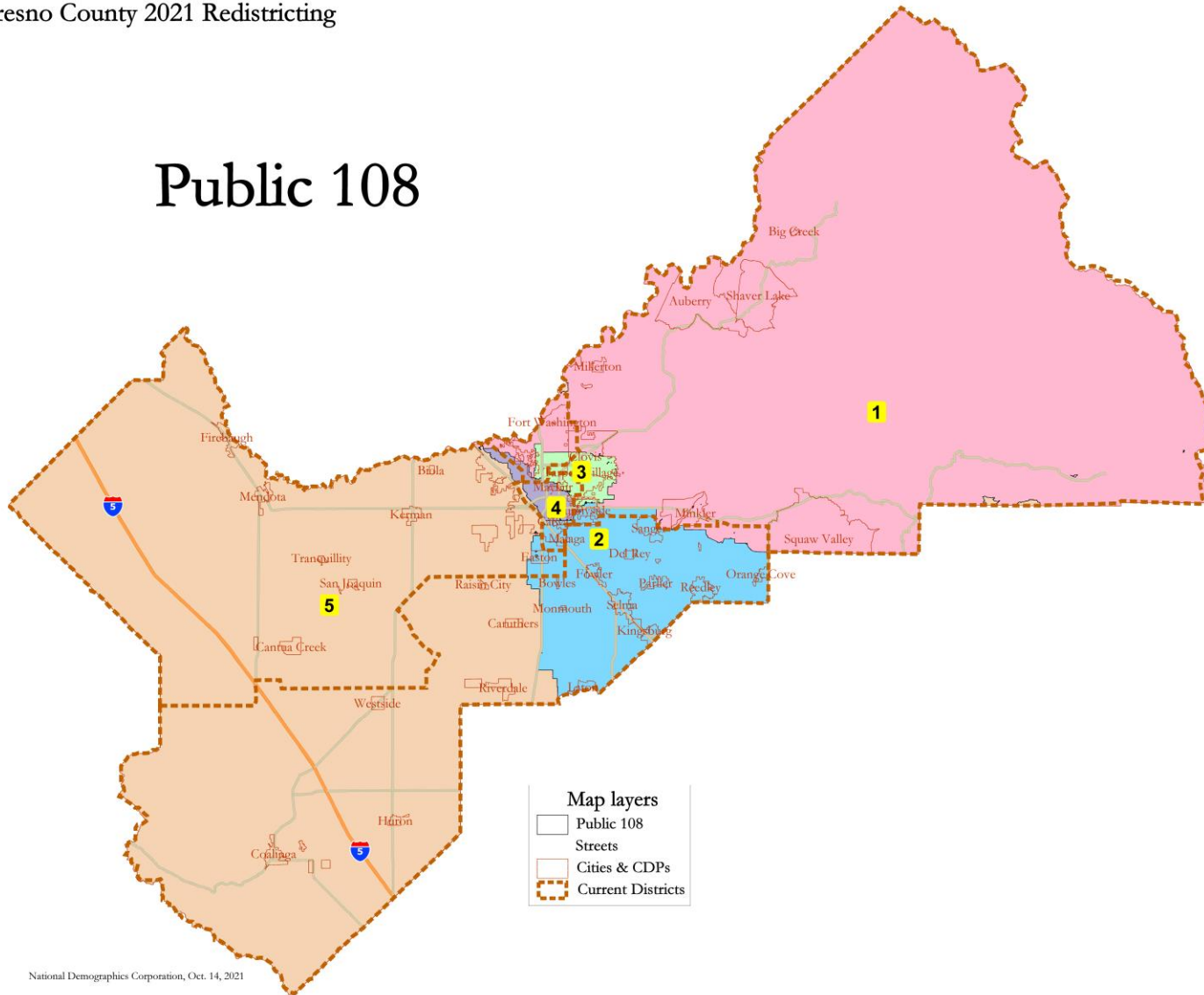
Fresno County Public 105							
District	1	2	3	4	5	Total	
Total Pop	Total Pop	203,454	197,255	205,369	191,590	210,862	1,008,530
	Deviation from ideal	1,748	-4,451	3,663	-10,116	9,156	19,272
	% Deviation	0.87%	-2.21%	1.82%	-5.02%	4.54%	9.55%
	% Hisp	34.1%	63%	74%	31%	64%	54%
Total Pop	% NH White	45%	15%	16%	45%	15%	27%
	% NH Black	6%	8%	1%	3%	7%	5%
	% Asian-American	12%	11%	7%	16%	12%	12%
	Total	144,866	100,202	104,335	120,365	115,279	585,047
Citizen Voting Age Pop	% Hisp	27%	51%	61%	26%	53%	42%
	% NH White	56%	26%	28%	57%	25%	40%
	% NH Black	5%	12%	1%	3%	8%	6%
	% Asian/Pac Isl	10%	10%	8%	12%	12%	11%
Voter Registration (Nov 2020)	Total	125,107	85,660	89,218	115,123	88,872	503,980
	% Latino est.	26%	51%	62%	24%	54%	41%
	% Spanish-Sumamed	24%	47%	57%	23%	50%	38%
	% Asian-Sumamed	5%	6%	5%	5%	3%	5%
	% Filipino-Sumamed	1%	1%	1%	1%	1%	1%
	% NH White est.	64%	29%	32%	67%	33%	48%
	% NH Black	5%	14%	2%	3%	10%	6%
	Total	100,113	56,639	63,382	92,526	53,551	366,211
	% Latino est.	23%	49%	57%	23%	52%	37%
	% Spanish-Sumamed	22%	45%	53%	21%	48%	35%
Voter Turnout (Nov 2020)	% Asian-Sumamed	5%	6%	5%	5%	3%	5%
	% Filipino-Sumamed	1%	1%	1%	1%	1%	1%
	% NH White est.	66%	32%	36%	69%	35%	52%
	% NH Black	4%	13%	2%	3%	9%	5%
	Total	72,960	35,778	42,536	62,532	33,623	247,629
	% Latino est.	20%	44%	52%	19%	48%	33%
	% Spanish-Sumamed	19%	42%	49%	18%	46%	31%
	% Asian-Sumamed	4%	5%	4%	4%	2%	4%
	% Filipino-Sumamed	1%	1%	1%	1%	1%	1%
	% NH White est.	70%	35%	40%	73%	38%	56%
Voter Turnout (Nov 2018)	% NH Black est.	4%	13%	1%	2%	9%	5%
	Total	204,075	194,253	203,345	178,023	201,575	981,270
ACS Pop. Est.	age0-19	27%	34%	34%	30%	32%	31%
	age20-60	51%	52%	51%	50%	54%	52%
	age60plus	22%	13%	16%	20%	14%	17%
Immigration	immigrants	14%	27%	28%	14%	23%	21%
	naturalized	58%	33%	32%	63%	38%	41%
Language spoken at home	english	74%	45%	41%	73%	45%	55%
	spanish	15%	44%	54%	14%	44%	35%
	asian-lang	6%	5%	2%	8%	9%	6%
	other lang	5%	6%	3%	4%	2%	4%
Language Fluency	Speaks Eng. "Less than Very Well"	8%	27%	26%	8%	23%	19%
Education (among those age 25+)	hs-grad	43%	47%	46%	49%	47%	46%
	bachelor	23%	9%	9%	20%	8%	14%
	graduatedegree	14%	3%	4%	10%	3%	7%
Child in Household	child-under18	32%	47%	47%	38%	41%	40%
Pct of Pop. Age 16+	employed	63%	62%	60%	63%	59%	61%
Household Income	income 0-25k	16%	27%	25%	15%	38%	24%
	income 25-50k	18%	27%	27%	18%	27%	23%
	income 50-75k	18%	19%	17%	16%	16%	17%
	income 75-200k	39%	26%	29%	43%	18%	31%
	income 200k-plus	9%	2%	3%	8%	1%	5%
Housing Stats	single family	72%	75%	83%	85%	60%	74%
	multi-family	28%	25%	17%	15%	40%	26%
	rented	43%	52%	44%	31%	64%	47%
	owned	57%	48%	56%	69%	36%	53%

Total population data from the 2020 Decennial Census.  
Surname-based Voter Registration and Turnout data from the California Statewide Database.  
Latino voter registration and turnout data are Spanish-surname counts adjusted using Census Population Department undercount estimates. NH White and NH Black registration and turnout counts estimated by NDC. Citizen Voting Age Pop., Age, Immigration, and other demographics from the 2015-2019 American Community Survey and Social Tabulation Survey data.

# Public Map 108

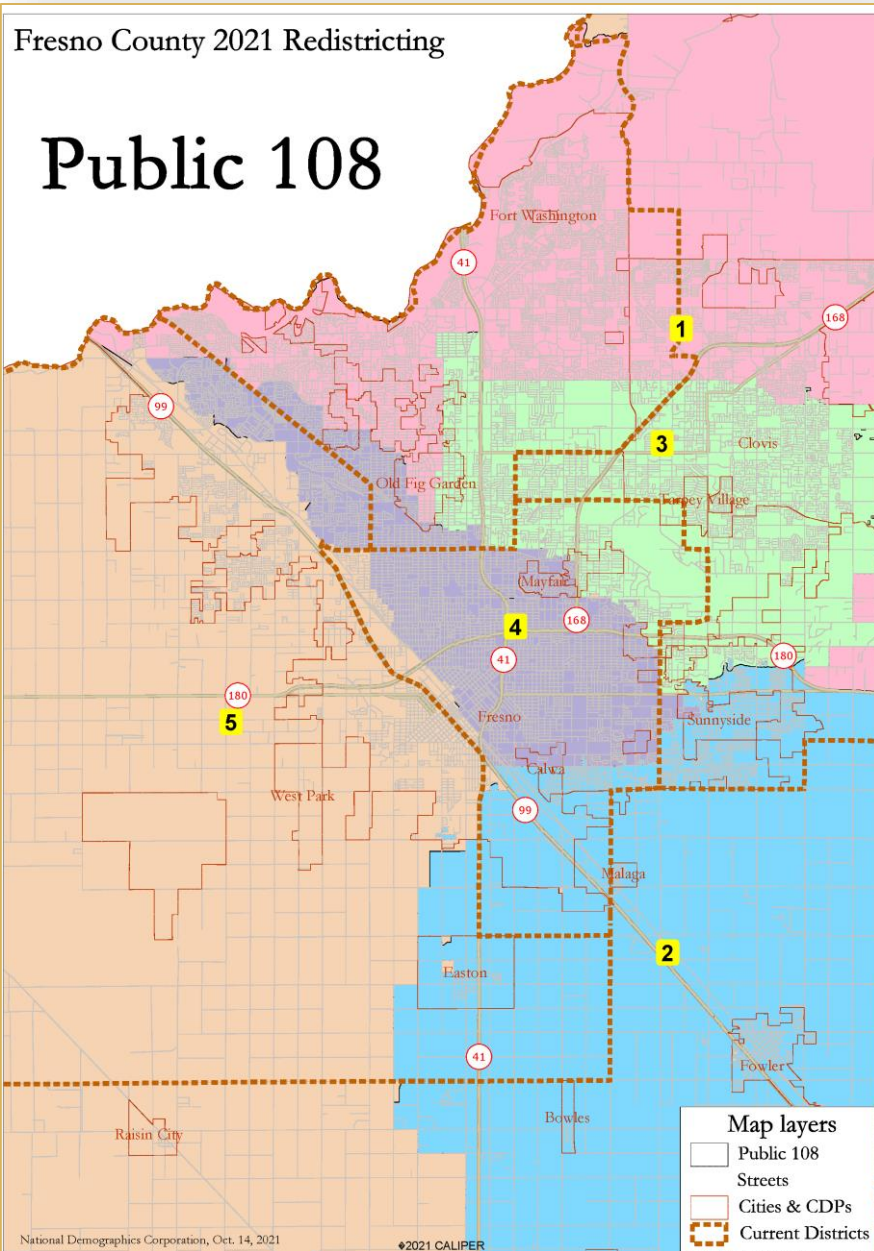
Fresno County 2021 Redistricting

## Public 108



National Demographics Corporation, Oct. 14, 2021

# Public Map 108

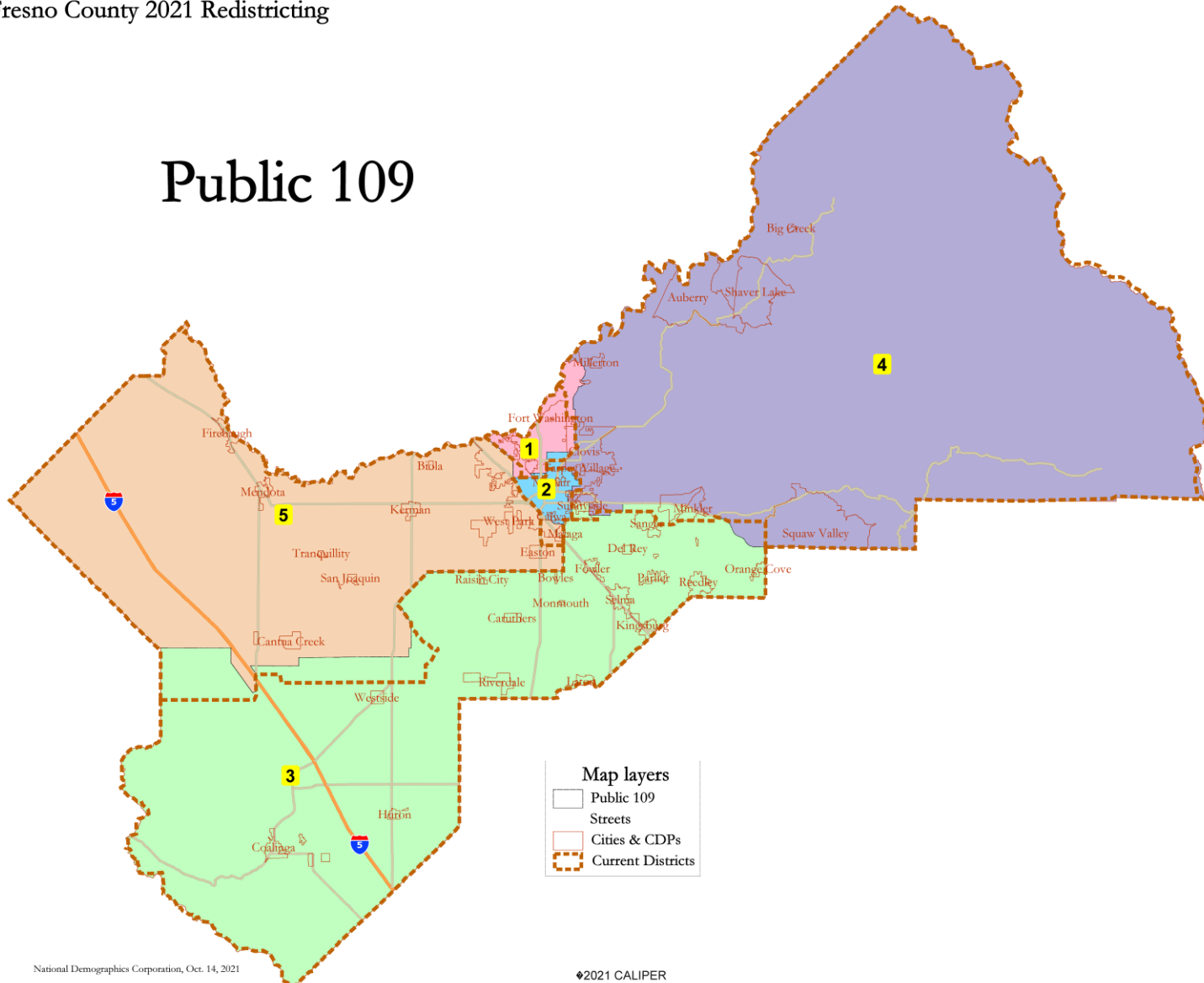


Fresno County Public 108							
District		1	2	3	4	5	Total
Total Pop	Total Pop	197,888	196,798	205,052	209,369	199,623	1,008,530
	Deviation from ideal	-4,018	-4,908	3,348	7,863	-2,083	12,571
	% Deviation	-1.99%	-2.43%	1.66%	3.80%	-1.03%	6.23%
	% Hisp	24.5%	7.1%	4.3%	6.2%	68%	54%
Citizen Voting Age Pop	% NH White	55%	15%	3.3%	18%	14%	27%
	% NH Black	3%	2%	5%	6%	6%	5%
	% Asian-American	13%	10%	15%	10%	10%	12%
	Total	139,851	102,559	129,820	117,211	95,606	585,047
Voter Registration (Nov 2020)	% Hisp	20%	6.1%	36%	50%	55%	42%
	% NH White	65%	25%	44%	29%	26%	40%
	% NH Black	3%	2%	6%	10%	9%	6%
	% Asian/Pac Isl	10%	10%	13%	10%	9%	11%
Voter Turnout (Nov 2020)	Total	132,067	89,728	107,817	83,013	81,355	503,980
	% Latino est.	19%	60%	35%	5.1%	53%	4.1%
	% Spanish-Sumamed	17%	56%	3.2%	4.7%	50%	38%
	% Asian-Sumamed	6%	5%	4%	3%	6%	5%
Voter Turnout (Nov 2018)	% Filipino-Sumamed	1%	1%	1%	1%	1%	1%
	% NH White est.	72%	32%	56%	35%	29%	48%
	% NH Black	3%	3%	6%	1.1%	1.2%	6%
	Total	111,295	63,403	79,140	58,950	53,423	366,211
ACS Pop. Est	% Latino est.	17%	56%	3.2%	4.9%	50%	37%
	% Spanish-Sumamed	16%	53%	30%	44%	47%	35%
	% Asian-Sumamed	5%	5%	4%	3%	6%	5%
	% Filipino-Sumamed	1%	1%	1%	1%	1%	1%
Age	% NH White est.	73%	35%	58%	39%	32%	52%
	% NH Black	3%	2%	5%	10%	10%	5%
	Total	82,015	42,418	51,159	38,172	33,885	247,629
	% Latino est.	15%	52%	28%	4.3%	46%	3.3%
Immigration	% Spanish-Sumamed	14%	49%	26%	4.1%	44%	3.1%
	% Asian-Sumamed	4%	5%	3%	3%	5%	4%
	% Filipino-Sumamed	1%	1%	1%	1%	1%	1%
	% NH White est.	78%	39%	63%	4.3%	35%	56%
Language spoken at home	% NH Black est.	2%	2%	5%	9%	10%	5%
	Total	193,151	195,475	198,215	199,923	196,508	981,270
	age0-19	26%	34%	3.1%	3.1%	35%	3.1%
	age20-60	50%	5.1%	5.3%	5.4%	5.2%	5.2%
Language Fluency	age60plus	24%	15%	16%	15%	14%	17%
	immigrants	13%	26%	15%	2.2%	30%	2.1%
	naturalized	64%	36%	54%	38%	29%	4.1%
	english	79%	4.1%	86%	5.1%	40%	55%
Education (among those age 25+)	spanish	10%	52%	2.2%	39%	5.1%	35%
	asian-lang	6%	4%	9%	7%	4%	6%
	other lang	6%	3%	4%	3%	5%	4%
	Speaks Eng. "Less than Very Well"	0%	25%	1.2%	20%	30%	19%
Child in Household	hs-grad	40%	46%	5.3%	4.8%	4.5%	46%
	bachelor	26%	10%	15%	10%	8%	14%
	graduatedegree	17%	4%	6%	5%	3%	7%
	child-under18	3.1%	4.8%	3.8%	3.9%	4.9%	4.0%
Household Income	employed	6.3%	6.1%	6.3%	5.9%	5.9%	6.1%
	income 0-25k	1.1%	25%	2.4%	3.4%	2.6%	2.4%
	income 25-50k	15%	26%	2.4%	2.7%	2.6%	2.3%
	income 50-75k	16%	17%	1.9%	1.6%	1.9%	1.7%
Housing Stats	income 75-200k	4.6%	30%	3.1%	2.1%	2.5%	3.1%
	income 200k-plus	1.2%	3%	3%	2%	2%	5%
	single family	85%	8.2%	6.4%	6.2%	7.9%	7.4%
	multi-family	15%	18%	3.6%	3.8%	2.1%	2.6%
Total population data from the 2020 Decennial Census.	rented	30%	4.2%	5.1%	6.1%	5.1%	4.7%
	owned	70%	5.8%	4.9%	3.9%	4.9%	5.3%
	Total population data from the 2020 Decennial Census.						
Surname-based Voter Registration and Turnout data from the California Statewide Database.							
Latino voter registration and turnout data are Spanish-surname counts adjusted using Census Population Department undercount estimates. NH White and NH Black registration and turnout counts estimated by NDC. Citizen Voting Age Pop., Age, Immigration, and other demographics from the 2015-2019 American Community Survey and Special Tabulation 5-year data.							

# Public Map 109

Fresno County 2021 Redistricting

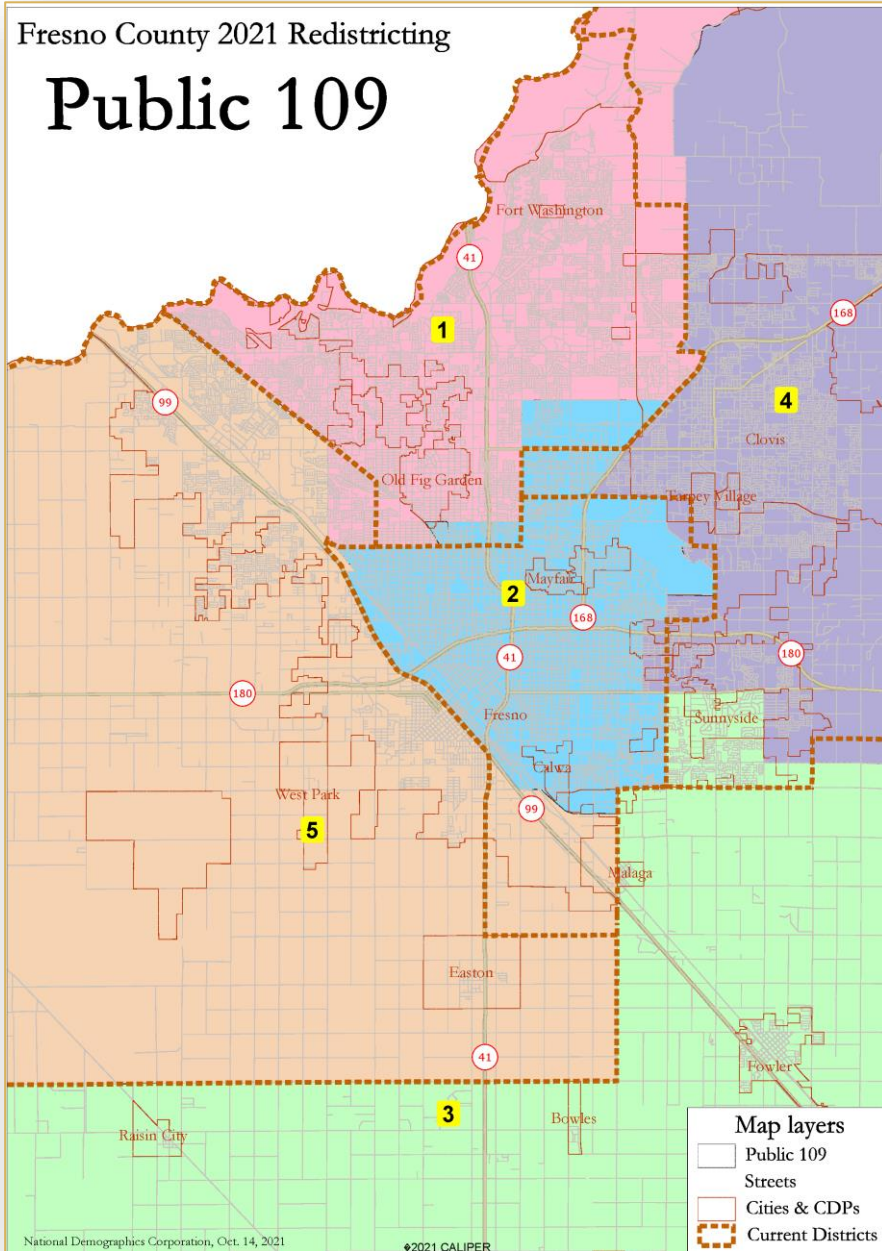
## Public 109



# Public Map 109

Fresno County 2021 Redistricting

## Public 109



National Demographics Corporation, Oct. 14, 2021

2021 CALIPER

Fresno County Public 109						
District	1	2	3	4	5	Total
Total Pop	200,692	211,899	205,699	200,599	189,641	1,008,530
Deviation from ideal	-1,014	10,193	3,993	-1,107	-12,065	22,258
% Deviation	-0.50%	5.05%	1.98%	-0.55%	-5.98%	11.03%
% Hisp	34.8%	64%	74%	32%	63%	54%
% NH White	44%	15%	16%	44%	15%	27%
% NH Black	6%	7%	1%	3%	7%	5%
% Asian-American	12%	11%	7%	16%	12%	12%
Total	141,862	118,489	105,050	124,651	94,995	585,047
% Hisp	27%	53%	61%	27%	51%	42%
% NH White	56%	26%	28%	55%	26%	40%
% NH Black	6%	8%	2%	3%	11%	6%
% Asian/Pac Isl.	10%	11%	8%	13%	11%	11%
Total	124,164	88,622	89,751	119,470	82,973	503,980
% Labno est.	26%	54%	61%	25%	51%	41%
% Spanish-Sumamed	24%	50%	57%	23%	47%	38%
% Asian-Sumamed	5%	3%	5%	5%	6%	5%
% Filipino-Sumamed	1%	1%	1%	1%	1%	1%
% NH White est.	63%	33%	33%	66%	30%	48%
% NH Black	5%	11%	2%	3%	13%	6%
Total	98,806	53,656	64,081	94,172	55,496	366,211
% Labno est.	24%	52%	56%	24%	48%	37%
% Spanish-Sumamed	22%	48%	52%	22%	45%	35%
% Asian-Sumamed	5%	3%	5%	5%	7%	5%
% Filipino-Sumamed	1%	1%	1%	1%	1%	1%
% NH White est.	66%	36%	37%	68%	32%	52%
% NH Black	4%	10%	2%	3%	12%	5%
Total	72,150	33,881	43,271	63,061	35,266	247,629
% Labno est.	20%	46%	51%	20%	44%	33%
% Spanish-Sumamed	19%	45%	49%	19%	42%	31%
% Asian-Sumamed	4%	2%	4%	4%	5%	4%
% Filipino-Sumamed	1%	1%	1%	1%	1%	1%
% NH White est.	70%	39%	41%	72%	36%	56%
% NH Black est.	4%	9%	1%	3%	12%	5%
Total	201,388	205,108	203,637	184,959	186,178	981,270
Age						
age0-19	26%	33%	33%	30%	34%	31%
age20-60	51%	54%	51%	50%	52%	52%
age60plus	22%	14%	16%	19%	13%	17%
Immigration						
immigrants	14%	23%	27%	14%	28%	21%
naturalized	59%	38%	32%	62%	32%	41%
Language spoken at home						
english	73%	46%	41%	72%	44%	55%
spanish	16%	43%	54%	15%	44%	35%
asian-lang	6%	9%	2%	8%	5%	6%
other lang	5%	2%	3%	4%	6%	4%
Language Fluency						
Speaks Eng. "Less than Very Well"	9%	22%	26%	9%	28%	19%
Education (among those age 25+)						
hs-grad	43%	47%	45%	49%	46%	46%
bachelor	22%	9%	10%	19%	10%	14%
graduatedegree	14%	3%	4%	9%	4%	7%
Child in Household						
child-under18	32%	40%	47%	39%	47%	40%
Pct of Pop. Age 16+						
employed	63%	59%	60%	63%	62%	61%
Household Income						
income 0-25k	16%	39%	25%	15%	25%	24%
income 25-50k	19%	26%	26%	19%	26%	23%
income 50-75k	18%	16%	17%	16%	19%	17%
income 75-200k	39%	18%	29%	42%	27%	31%
income 200k-plus	9%	1%	3%	7%	3%	5%
Housing Stats						
single family	73%	58%	62%	63%	77%	74%
multi-family	27%	42%	18%	17%	23%	26%
rented	42%	65%	44%	33%	50%	47%
owned	58%	35%	56%	67%	50%	53%

Total population data from the 2020 Decennial Census

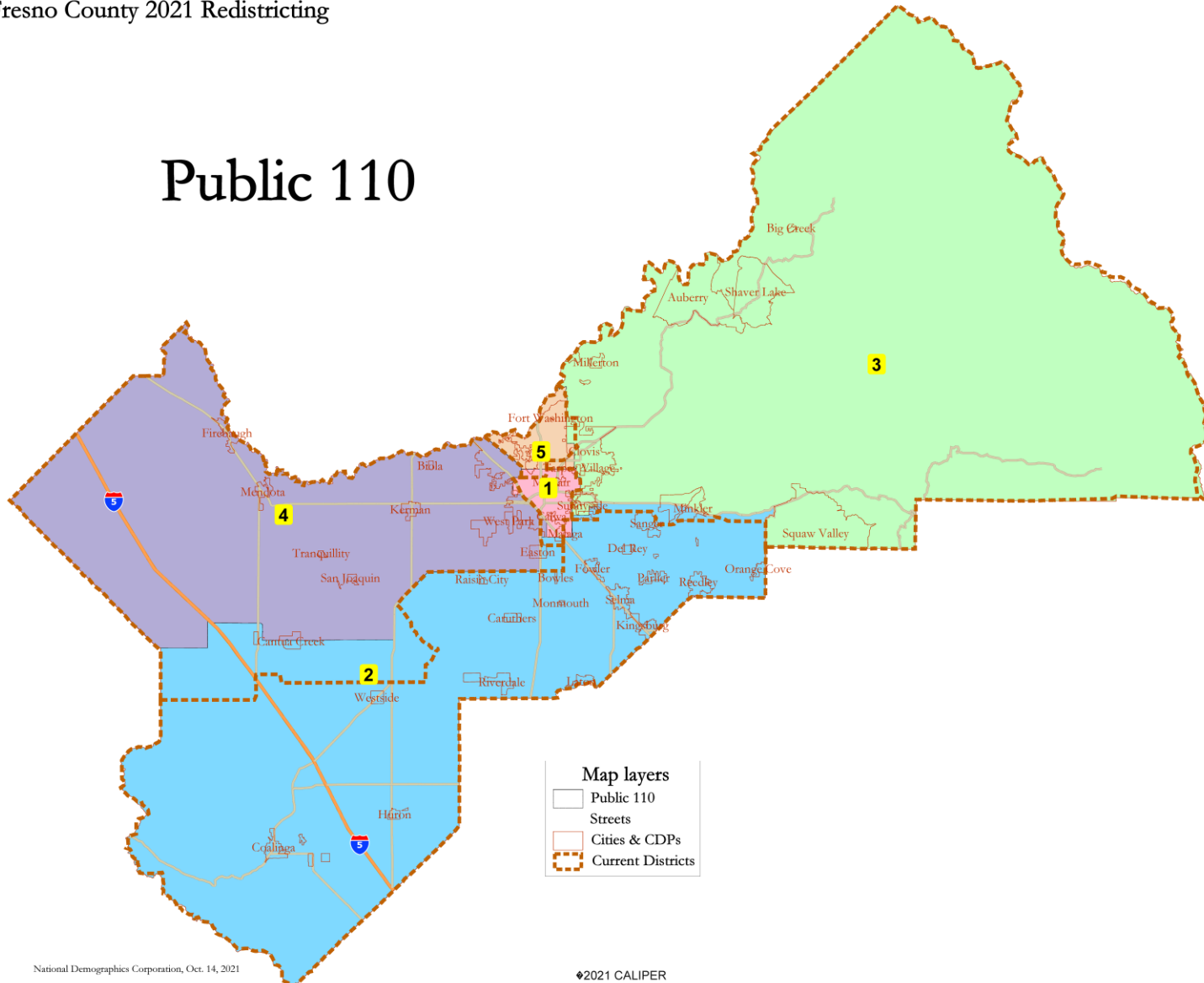
Surname-based voter Registration and Turnout data from the California Statewide Database

Latino voter registration and turnout data are Spanish-surname counts adjusted using Census Population Department undercount estimates. NH White and NH Black registration and turnout counts estimated by NDC. Citizen Voting Age Pop., Age, Immigration, and other demographics from the 2016-2019 American Community Survey and Special Tabulation Survey data.

# Public Map 110

Fresno County 2021 Redistricting

## Public 110



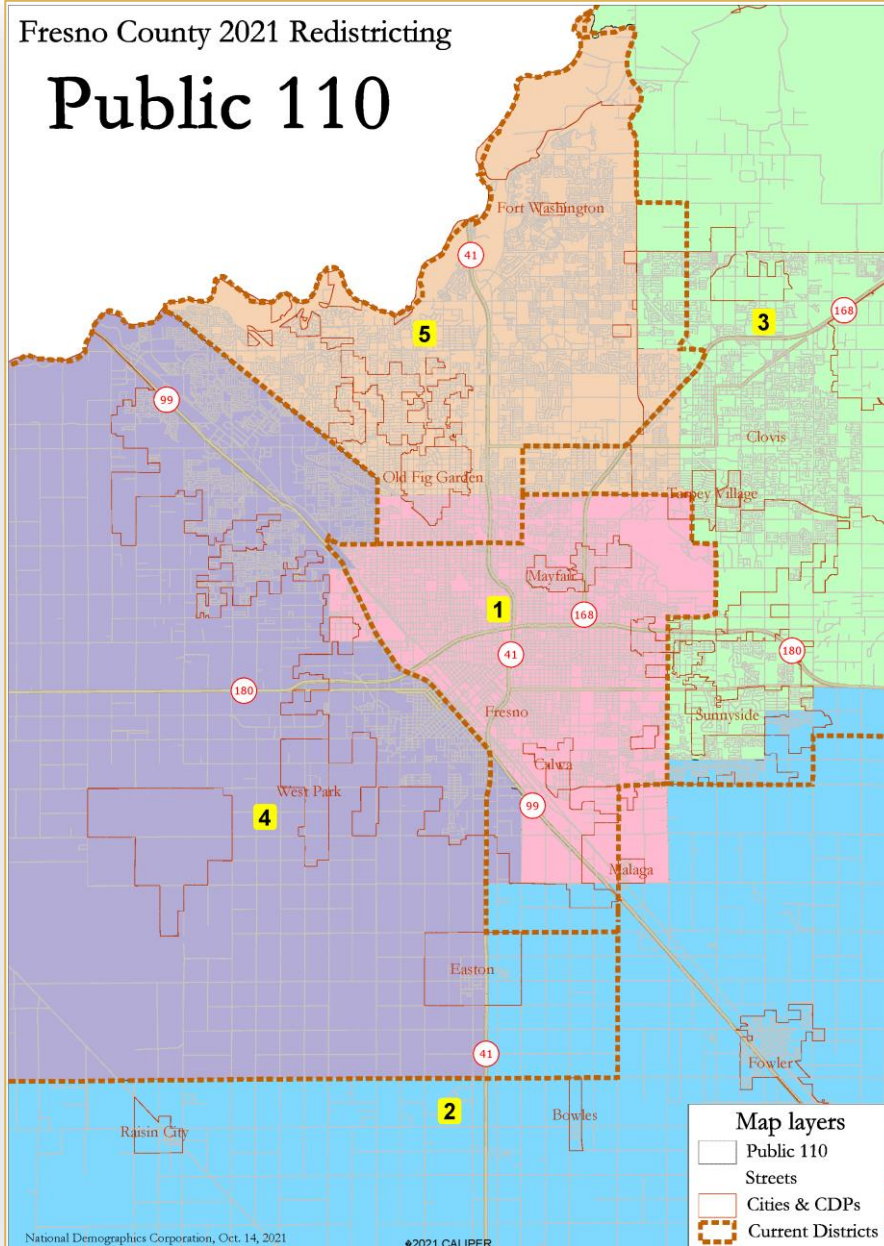
**Map layers**

- Public 110
- Streets
- Cities & CDPs
- Current Districts

# Public Map 110

Fresno County 2021 Redistricting

## Public 110



National Demographics Corporation, Oct. 14, 2021

©2021 CALIPER

Fresno County Public 110						
District	1	2	3	4	5	Total
Total Pop	215,246	203,109	191,935	197,092	201,148	1,008,530
Deviation from ideal	13,540	1,403	-9,771	-4,614	-558	23,311
% Deviation	6.71%	0.70%	-4.84%	-2.29%	-0.28%	11.56%
% Hisp	65.1%	75%	30%	62%	34%	54%
% NH White	14%	16%	16%	16%	44%	27%
% NH Black	7%	1%	3%	8%	5%	5%
% Asian-American	11%	6%	17%	12%	13%	12%
Citizen Voting Age Pop	116,532	102,847	120,273	100,646	144,748	585,047
% Hisp	54%	62%	25%	50%	27%	42%
% NH White	25%	28%	57%	26%	56%	40%
% NH Black	9%	1%	3%	11%	5%	6%
% Asian/Pac Isl	11%	7%	13%	11%	10%	11%
Voter Registration (Nov 2020)	89,891	87,718	117,278	88,965	122,128	503,980
% Latino est	55%	62%	24%	50%	26%	41%
% Spanish-Surnamed	51%	57%	22%	46%	24%	38%
% Asian-Surnamed	3%	4%	6%	6%	5%	5%
% Filipino-Surnamed	1%	1%	1%	1%	1%	1%
% NH White est	32%	32%	67%	30%	64%	48%
% NH Black	11%	1%	3%	14%	4%	6%
Voter Turnout (Nov 2020)	53,570	62,380	94,949	58,049	97,283	368,211
% Latino est	53%	57%	22%	48%	24%	37%
% Spanish-Surnamed	49%	53%	21%	45%	22%	35%
% Asian-Surnamed	2%	5%	5%	6%	5%	5%
% Filipino-Surnamed	1%	1%	1%	1%	1%	1%
% NH White est	34%	37%	69%	32%	66%	52%
% NH Black	10%	1%	3%	12%	4%	5%
Voter Turnout (Nov 2018)	33,780	42,044	64,526	36,811	70,488	247,629
% Latino est	49%	52%	19%	44%	20%	33%
% Spanish-Surnamed	46%	49%	18%	41%	19%	31%
% Asian-Surnamed	2%	4%	4%	5%	4%	4%
% Filipino-Surnamed	1%	1%	1%	1%	1%	1%
% NH White est	37%	41%	73%	36%	70%	56%
% NH Black est	9%	1%	3%	13%	4%	5%
ACS Pop Est	208,412	201,221	178,084	193,522	200,031	961,270
Age						
age0-19	33%	34%	30%	34%	26%	31%
age20-60	53%	51%	50%	53%	53%	52%
age60plus	14%	16%	20%	14%	21%	17%
Immigration						
immigrants	23%	28%	14%	27%	14%	21%
naturalized	37%	31%	64%	33%	59%	41%
Language spoken at home						
english	45%	41%	73%	46%	74%	55%
spanish	45%	54%	14%	43%	14%	35%
asian-lang	8%	2%	8%	5%	6%	6%
other lang	2%	3%	5%	6%	6%	4%
Language Fluency						
Speaks Eng. "Less than Very Well"	23%	26%	8%	27%	8%	19%
Education (among those age 25+)						
hs-grad	47%	45%	47%	47%	45%	46%
bachelor	8%	9%	20%	10%	23%	14%
graduatedegree	3%	4%	11%	4%	14%	7%
Child in Household	42%	47%	39%	47%	30%	40%
Pct of Pop. Age 16+	58%	60%	63%	62%	64%	61%
Household Income						
income 0-25k	39%	25%	13%	26%	17%	24%
income 25-50k	26%	27%	17%	26%	20%	23%
income 50-75k	16%	17%	16%	19%	19%	17%
income 75-200k	18%	28%	46%	27%	37%	31%
income 200k-plus	1%	3%	9%	2%	8%	5%
Household Stats						
single family	61%	83%	88%	76%	68%	74%
multi-family	39%	17%	12%	24%	32%	26%
rented	64%	44%	28%	51%	45%	47%
owned	36%	56%	72%	49%	55%	53%

Total population data from the 2020 Decennial Census

Surname-based Voter Registration and Turnout data from the California Statewide Database

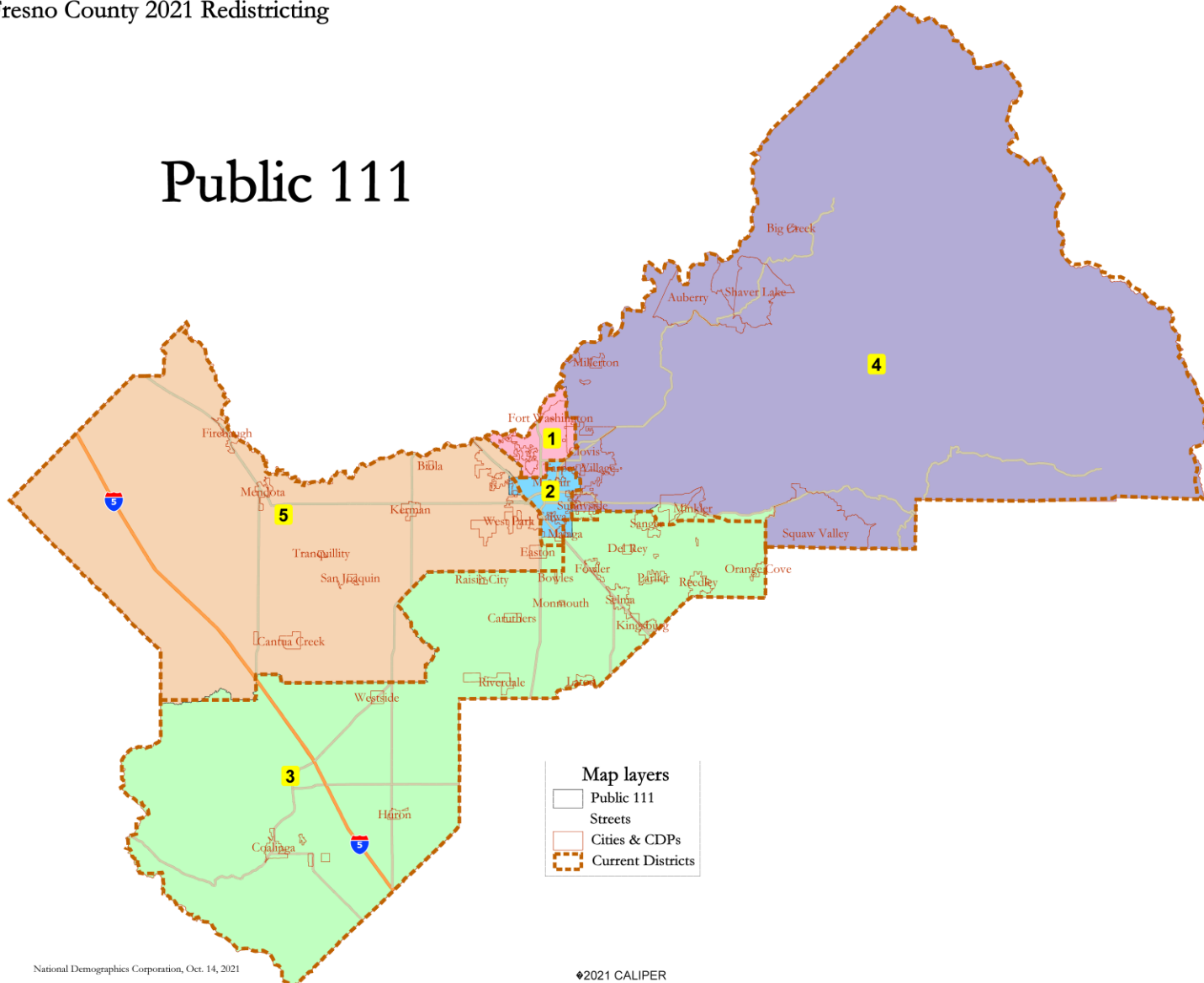
Latino voter registration and turnout data are Spanish-surname counts adjusted using Census Population Department undercount estimates. NH White and NH Black registration and turnout counts estimated by NDC. Citizen Voting Age Pop., Age, Immigration, and other demographics from the 2015-2019 American Community Survey and Special Tabulation 5-year data.



# Public Map 111

Fresno County 2021 Redistricting

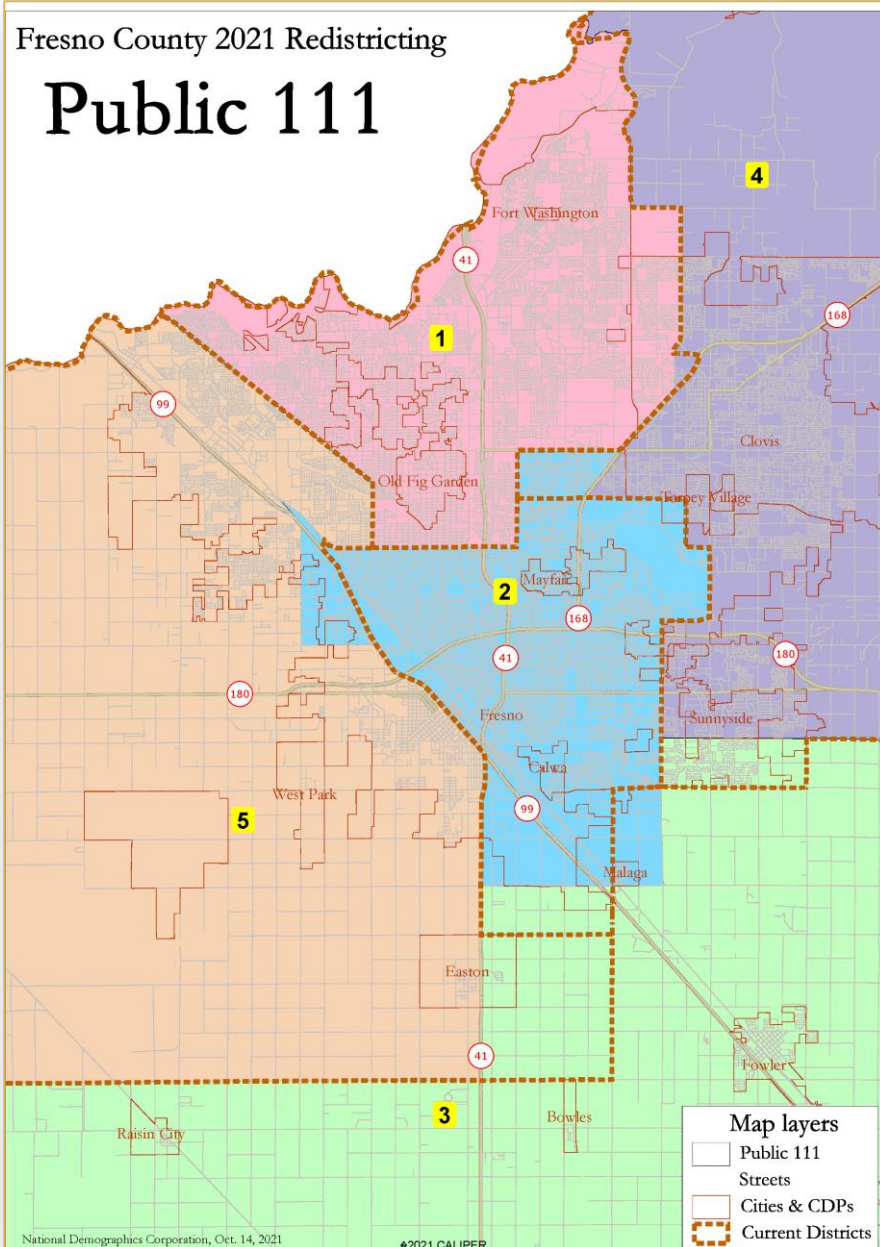
## Public 111



# Public Map 111

Fresno County 2021 Redistricting

## Public 111



National Demographics Corporation, Oct. 14, 2021

©2021 CALIPER

Fresno County Public 111

District	1	2	3	4	5	Total
Total Pop	198,633	213,053	204,346	199,198	193,300	1,008,530
Deviation from ideal	-3,073	11,347	2,640	-2,508	-8,406	19,753
% Deviation	-1.52%	5.33%	1.31%	-1.24%	-4.17%	0.79%
% Hisp	34.0%	65%	74%	32%	62%	54%
% NH White	45%	14%	16%	45%	16%	27%
% NH Black	6%	7%	1%	3%	8%	5%
% Asian-American	12%	12%	7%	16%	12%	12%
Citizen Voting Age Pop	142,243	116,322	103,824	124,255	98,403	585,047
% Hisp	27%	54%	61%	27%	51%	42%
% NH White	57%	24%	28%	57%	26%	40%
% NH Black	5%	8%	1%	3%	11%	6%
% Asian/Pac Isl.	10%	12%	8%	12%	10%	11%
Voter Registration (Nov 2020)	122,371	88,721	88,892	118,711	85,485	503,980
% Latino est.	25%	55%	61%	25%	50%	41%
% Spanish-Sumamed	24%	51%	57%	23%	47%	38%
% Asian-Sumamed	5%	3%	5%	5%	6%	5%
% Filipino-Sumamed	1%	1%	1%	1%	1%	1%
% NH White est.	64%	32%	32%	66%	30%	48%
% NH Black	4%	11%	2%	3%	14%	6%
Voter Turnout (Nov 2020)	97,946	52,987	63,059	94,995	57,224	368,211
% Latino est.	23%	53%	57%	23%	48%	37%
% Spanish-Sumamed	22%	49%	53%	22%	45%	35%
% Asian-Sumamed	5%	3%	5%	5%	6%	5%
% Filipino-Sumamed	1%	1%	1%	1%	1%	1%
% NH White est.	67%	34%	36%	68%	32%	52%
% NH Black	4%	10%	2%	3%	12%	5%
Voter Turnout (Nov 2018)	71,479	33,343	42,315	64,140	36,352	247,629
% Latino est.	19%	49%	52%	20%	44%	33%
% Spanish-Sumamed	18%	47%	49%	19%	42%	31%
% Asian-Sumamed	4%	2%	4%	4%	5%	4%
% Filipino-Sumamed	1%	1%	1%	1%	1%	1%
% NH White est.	71%	37%	41%	72%	36%	56%
% NH Black est.	4%	9%	1%	2%	13%	5%
ACS Pop. Est.	200,307	205,148	202,310	183,706	189,799	981,270
Age						
age0-19	27%	32%	34%	30%	34%	31%
age20-60	51%	54%	51%	50%	52%	52%
age60plus	22%	14%	16%	19%	14%	17%
Immigration						
immigrants	14%	24%	28%	14%	27%	21%
naturalized	58%	38%	32%	63%	33%	41%
Language spoken at home						
english	74%	44%	41%	73%	46%	55%
spanish	15%	45%	54%	14%	44%	35%
asian-lang	6%	9%	2%	8%	5%	6%
other lang	5%	2%	3%	4%	6%	4%
Language Fluency	Speaks Eng. "Less than Very Well"					
	8%	23%	26%	8%	27%	19%
Education (among those age 25+)						
hs-grad	43%	47%	46%	49%	47%	46%
bachelor	23%	8%	9%	19%	9%	14%
graduatedegree	14%	3%	4%	10%	4%	7%
Child in Household	32%	41%	47%	38%	47%	40%
Pct of Pop. Age 16+	employed	63%	56%	61%	63%	61%
Household Income						
income 0-25k	17%	38%	25%	15%	26%	24%
income 25-50k	18%	26%	27%	19%	26%	23%
income 50-75k	18%	17%	17%	16%	18%	17%
income 75-200k	39%	17%	29%	42%	27%	31%
income 200k-plus	9%	1%	3%	8%	3%	5%
Housing Stats						
single family	71%	60%	83%	83%	76%	74%
multi-family	29%	40%	17%	17%	24%	26%
rented	43%	64%	44%	32%	51%	47%
owned	57%	36%	56%	68%	49%	53%

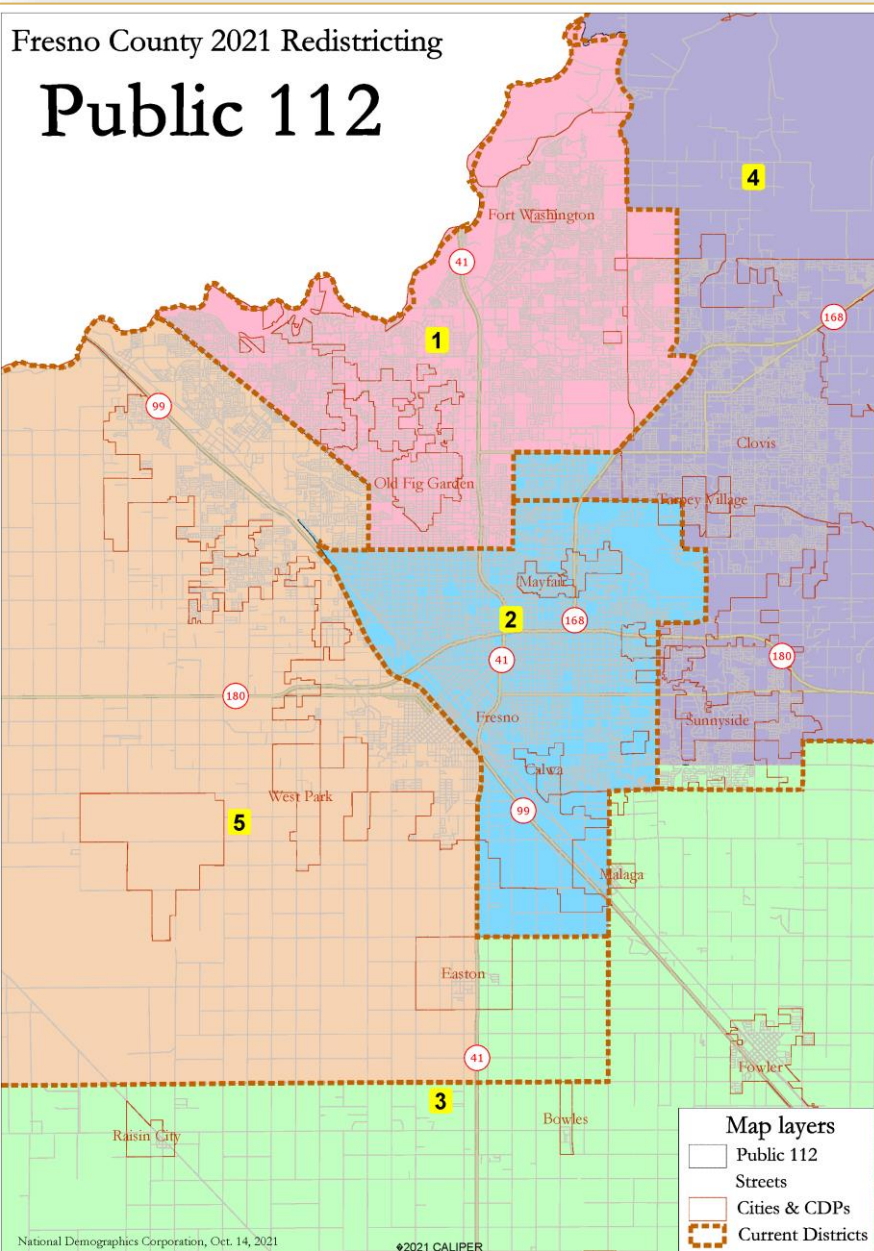
Total population data from the 2020 Decennial Census

Surname-based Voter Registration and Turnout data from the California Statewide Database

Latino voter registration and turnout data are Spanish-surname counts adjusted using Census Population Department undercount estimates. NH White and NH Black registration and turnout counts estimated by NDC. Citizen Voting Age Pop., Age, Immigration, and other demographics from the 2015-2019 American Community Survey and Special Tabulation 5-year data.



# Public Map 112



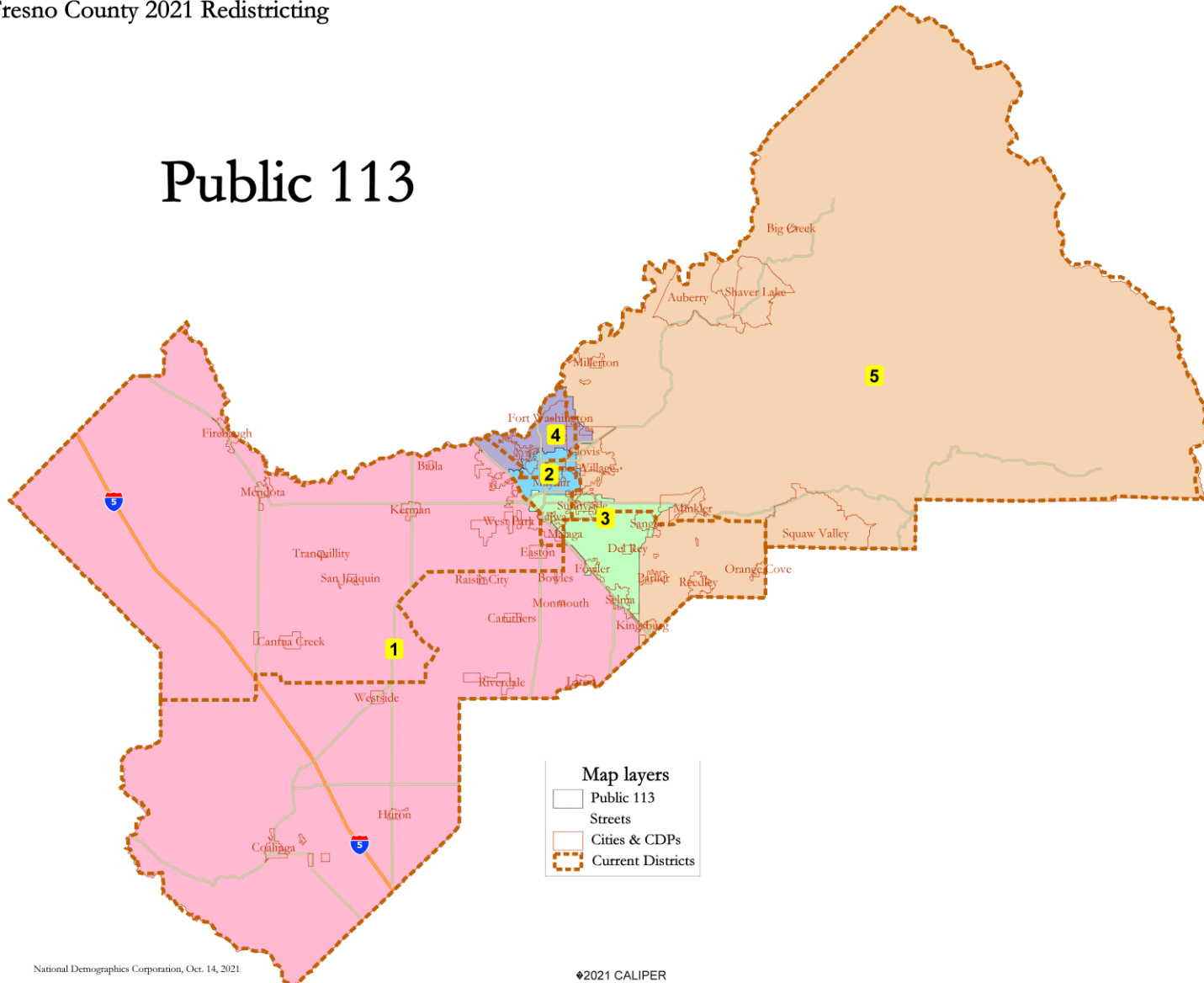
Fresno County Public 112							
District	1	2	3	4	5	Total	
Total Pop	199,107	202,930	196,527	207,048	202,918	1,008,530	
Deviation from ideal	-2,990	1,224	-5,179	5,342	1,212	10,521	
% Deviation	-1.29%	0.61%	-2.57%	2.65%	0.60%	5.22%	
% Hisp	34.0%	65%	75%	32%	62%	54%	
% NH White	45%	14%	16%	43%	16%	27%	
% NH Black	6%	7%	1%	3%	8%	5%	
% Asian-American	12%	12%	5%	17%	12%	12%	
Citizen Voting Age Pop	142,491	111,090	99,780	128,464	103,241	585,047	
% Hisp	27%	54%	62%	27%	51%	42%	
% NH White	57%	24%	28%	55%	26%	40%	
% NH Black	5%	8%	1%	3%	11%	6%	
% Asian/Pac Isl	10%	12%	6%	13%	10%	11%	
Voter Registration (Nov 2020)	122,649	85,001	84,786	122,753	88,811	503,980	
% Latino est.	25%	55%	63%	25%	50%	41%	
% Spanish-Sumamed	24%	51%	58%	24%	47%	38%	
% Asian-Sumamed	5%	3%	4%	5%	6%	5%	
% Filipino-Sumamed	1%	1%	1%	1%	1%	1%	
% NH White est.	64%	32%	32%	65%	30%	48%	
% NH Black	4%	11%	1%	3%	14%	6%	
Total	98,178	50,882	60,235	97,849	59,067	366,211	
% Latino est.	23%	53%	58%	24%	48%	37%	
% Spanish-Sumamed	22%	49%	54%	22%	45%	35%	
% Asian-Sumamed	5%	3%	4%	5%	6%	5%	
% Filipino-Sumamed	1%	1%	1%	1%	1%	1%	
% NH White est.	67%	34%	36%	67%	32%	52%	
% NH Black	4%	10%	1%	3%	12%	5%	
Voter Turnout (Nov 2018)	71,892	32,123	40,809	65,593	37,412	247,829	
% Latino est.	19%	49%	53%	20%	44%	33%	
% Spanish-Sumamed	18%	46%	50%	19%	42%	31%	
% Asian-Sumamed	4%	2%	4%	4%	5%	4%	
% Filipino-Sumamed	1%	1%	1%	1%	1%	1%	
% NH White est.	71%	37%	41%	72%	36%	56%	
% NH Black est.	4%	9%	1%	3%	13%	5%	
ACS Pop. Est.	200,621	195,433	195,354	190,965	198,897	981,270	
Age	age0-19	27%	32%	34%	30%	34%	31%
age20-60	51%	54%	50%	51%	52%	52%	
age60plus	22%	14%	16%	19%	14%	17%	
Immigration	immigrants	14%	23%	28%	14%	27%	21%
naturalized	58%	36%	31%	63%	33%	41%	
Language spoken at home	english	74%	44%	41%	72%	45%	55%
spanish	15%	45%	55%	15%	44%	35%	
asian-lang	6%	9%	2%	8%	5%	6%	
other lang	5%	2%	3%	4%	6%	4%	
Language Fluency	Speaks Eng. "Less than Very Well"	8%	23%	26%	9%	27%	19%
hs-grad	43%	47%	45%	49%	47%	46%	
bachelor	23%	8%	9%	19%	9%	14%	
graduatedegree	14%	3%	4%	10%	3%	7%	
Child in Household	child-under18	31%	41%	47%	39%	47%	40%
employed	63%	58%	60%	63%	62%	61%	
Pct of Pop. Age 16+	income 0-25k	17%	35%	25%	15%	26%	24%
income 25-50k	18%	27%	27%	18%	26%	23%	
income 50-75k	18%	16%	17%	18%	19%	17%	
income 75-200k	39%	18%	28%	43%	26%	31%	
income 200k-plus	9%	1%	3%	8%	2%	5%	
Housing Stats	single family	71%	80%	82%	84%	75%	74%
multi-family	29%	40%	18%	16%	25%	26%	
rented	43%	64%	45%	32%	51%	47%	
owned	57%	36%	55%	68%	49%	53%	

Total population data from the 2020 Decennial Census.  
 Surname-based Voter Registration and Turnout data from the California Statewide Database.  
 Latino voter registration and turnout data are Spanish-surname counts adjusted using Census Population Department undercount estimates. NH White and NH Black registration and turnout counts estimated by NDC. Citizen Voting Age Pop., Age, Immigration, and other demographics from the 2015-2019 American Community Survey and Special Tabulation 5-year data.

# Public Map 113

Fresno County 2021 Redistricting

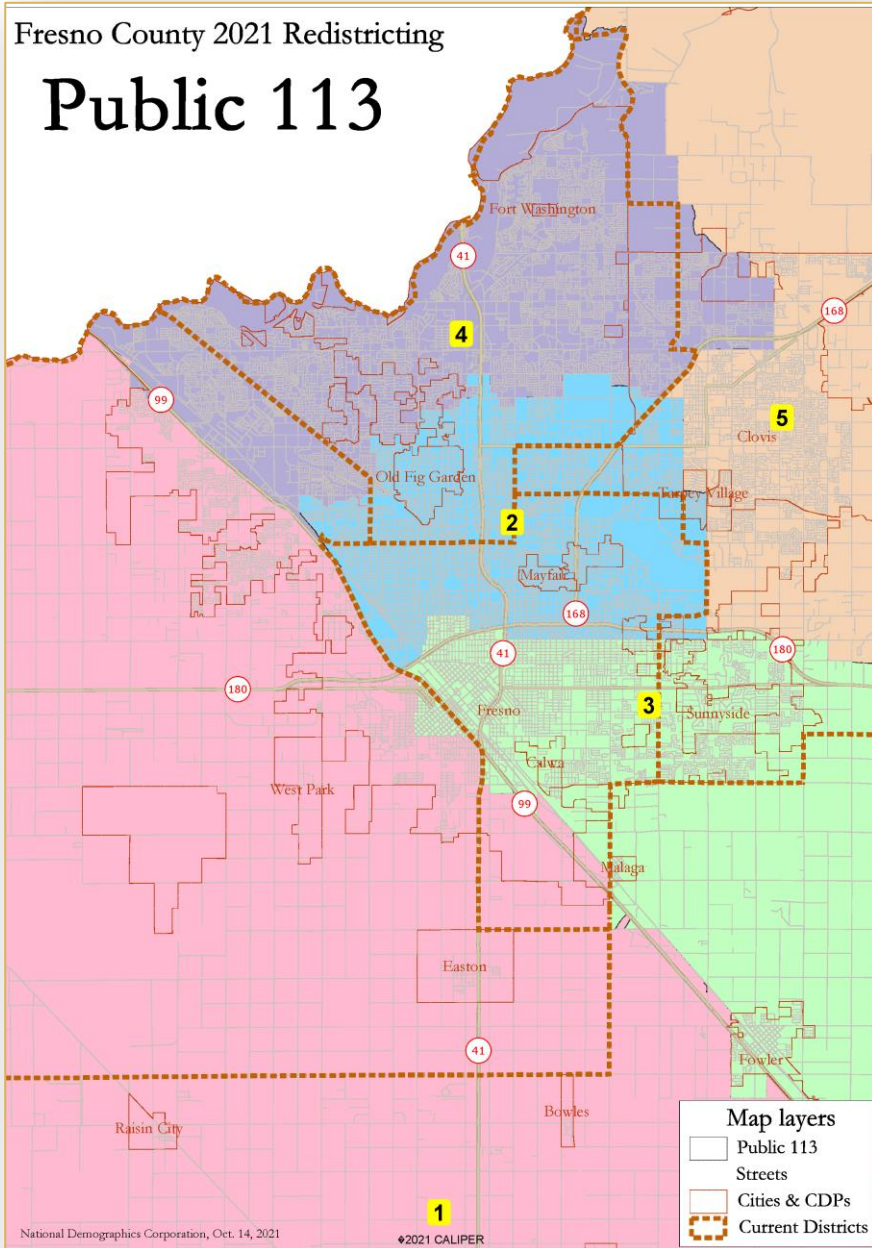
## Public 113



# Public Map 113

Fresno County 2021 Redistricting

## Public 113



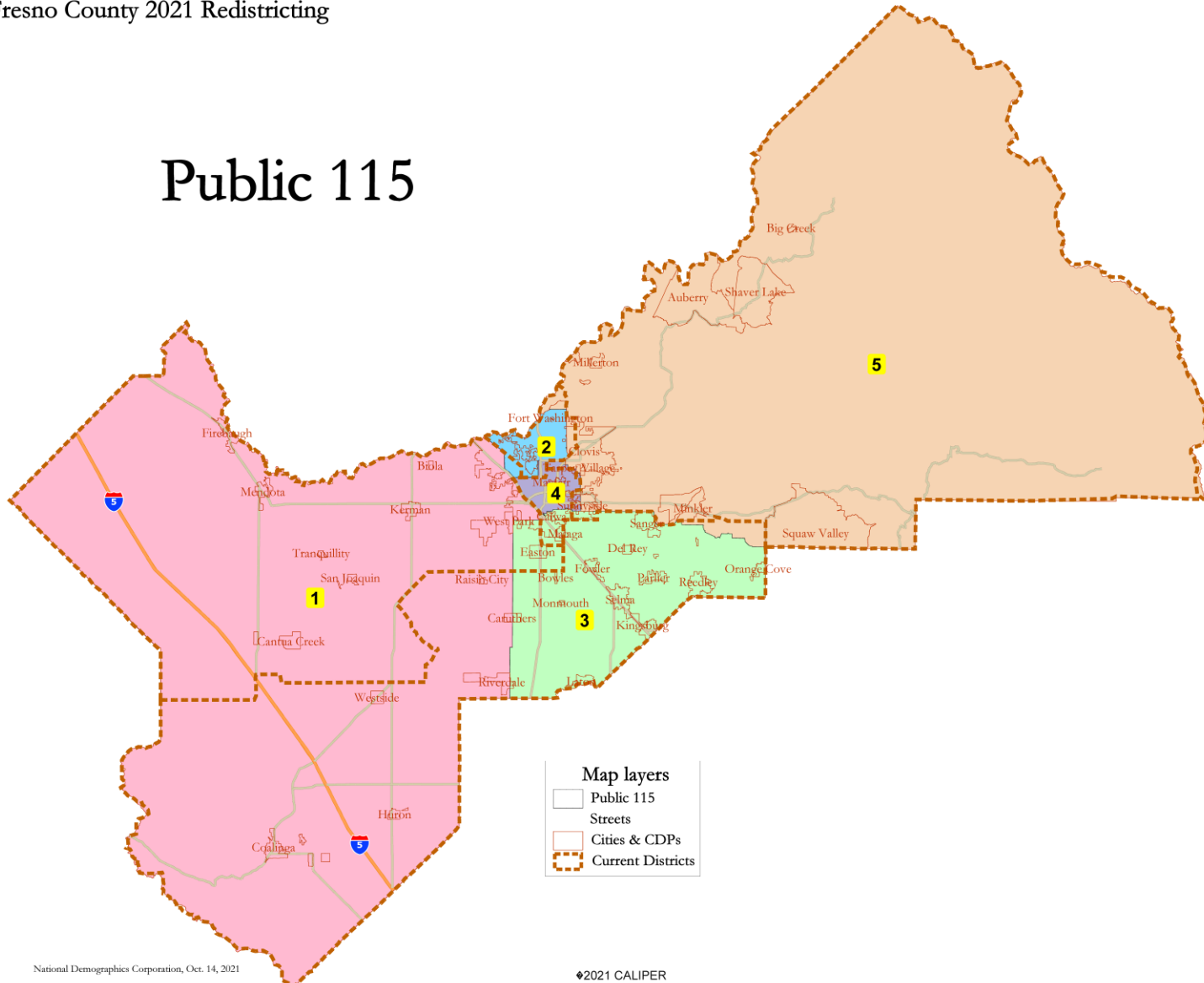
Fresno County Public 113						
District	1	2	3	4	5	Total
Total Pop	198,885	202,879	202,832	199,853	204,081	1,008,530
Deviation from ideal	-2,821	1,173	1,126	-1,853	2,375	5,196
% Deviation	-1.40%	0.58%	0.56%	-0.92%	1.18%	2.59%
% Hisp	68.5%	55%	86%	32%	45%	54%
% NH White	15%	23%	12%	46%	39%	27%
% NH Black	5%	7%	5%	5%	2%	5%
% Asian-American	9%	11%	13%	14%	10%	12%
Citizen Voting Age Pop	95,112	126,508	105,997	139,326	118,103	585,047
% Hisp	55%	45%	59%	25%	35%	42%
% NH White	27%	36%	20%	57%	53%	40%
% NH Black	7%	8%	6%	6%	2%	6%
% Asian/Pac Isl.	9%	10%	14%	11%	9%	11%
Voter Registration (Nov. 2020)	81,056	94,535	87,778	126,031	114,580	503,980
% Latino est.	54%	45%	80%	25%	33%	41%
% Spanish-Surnamed	50%	41%	55%	23%	30%	38%
% Asian-Surnamed	6%	3%	5%	6%	4%	5%
% Filipino-Surnamed	1%	1%	1%	1%	1%	1%
% NH White est.	30%	44%	28%	63%	61%	48%
% NH Black	10%	9%	8%	5%	2%	6%
Voter Turnout (Nov. 2020)	53,910	61,820	57,056	102,280	91,138	366,211
% Latino est.	50%	42%	58%	23%	29%	37%
% Spanish-Surnamed	47%	39%	54%	21%	27%	35%
% Asian-Surnamed	6%	3%	5%	6%	4%	5%
% Filipino-Surnamed	1%	1%	1%	1%	1%	1%
% NH White est.	33%	47%	30%	65%	64%	52%
% NH Black	9%	8%	7%	5%	2%	5%
Voter Turnout (Nov. 2018)	34,662	40,193	36,362	74,048	62,364	247,629
% Latino est.	45%	37%	55%	20%	25%	33%
% Spanish-Surnamed	43%	35%	52%	18%	24%	31%
% Asian-Surnamed	5%	2%	5%	5%	3%	4%
% Filipino-Surnamed	1%	1%	1%	1%	1%	1%
% NH White est.	37%	52%	33%	69%	68%	56%
% NH Black est.	9%	7%	6%	5%	1%	5%
ACS Pop. Est.	196,877	199,981	194,947	196,849	192,616	981,270
Age	age0-19	35%	32%	33%	26%	31%
age20-60	51%	54%	52%	52%	49%	52%
age60plus	14%	15%	15%	22%	19%	17%
Immigration	immigrants	30%	16%	26%	15%	21%
naturalized	29%	44%	38%	60%	44%	41%
Language spoken at home	english	40%	59%	41%	75%	55%
spanish	51%	31%	48%	12%	30%	35%
asian-lang	4%	8%	8%	6%	5%	6%
other lang	5%	2%	3%	7%	3%	4%
Language Fluency	Speaks Eng. "Less than Very Well"	31%	14%	25%	8%	19%
Education (among those age 25+)	hs-grad	44%	52%	46%	42%	46%
bachelor	8%	11%	9%	24%	17%	14%
graduatedegree	3%	5%	4%	15%	8%	7%
Child in Household	child-under18	49%	37%	46%	32%	40%
Pct of Pop. Age 16+	employed	60%	62%	56%	65%	62%
income 0-25k	27%	33%	32%	13%	17%	24%
income 25-50k	26%	26%	26%	18%	20%	23%
income 50-75k	18%	17%	15%	18%	16%	17%
income 75-200k	26%	21%	25%	41%	40%	31%
income 200k-plus	3%	2%	2%	10%	7%	5%
Housing Stats	single family	82%	57%	72%	76%	74%
multi-family	18%	43%	28%	24%	13%	26%
rented	50%	62%	53%	39%	30%	47%
owned	50%	38%	47%	61%	70%	53%

Total population data from the 2020 Decennial Census.  
 Surname-based Voter Registration and Turnout data from the California Statewide Database.  
 Latino voter registration and turnout data are Spanish-surname counts adjusted using Census Population Department undercount estimates. NH White and NH Black registration and turnout counts estimated by NDC. Citizen Voting Age Pop, Age, Immigration, and other demographics from the 2015-2019 American Community Survey and Census Bureau's 5-year data.

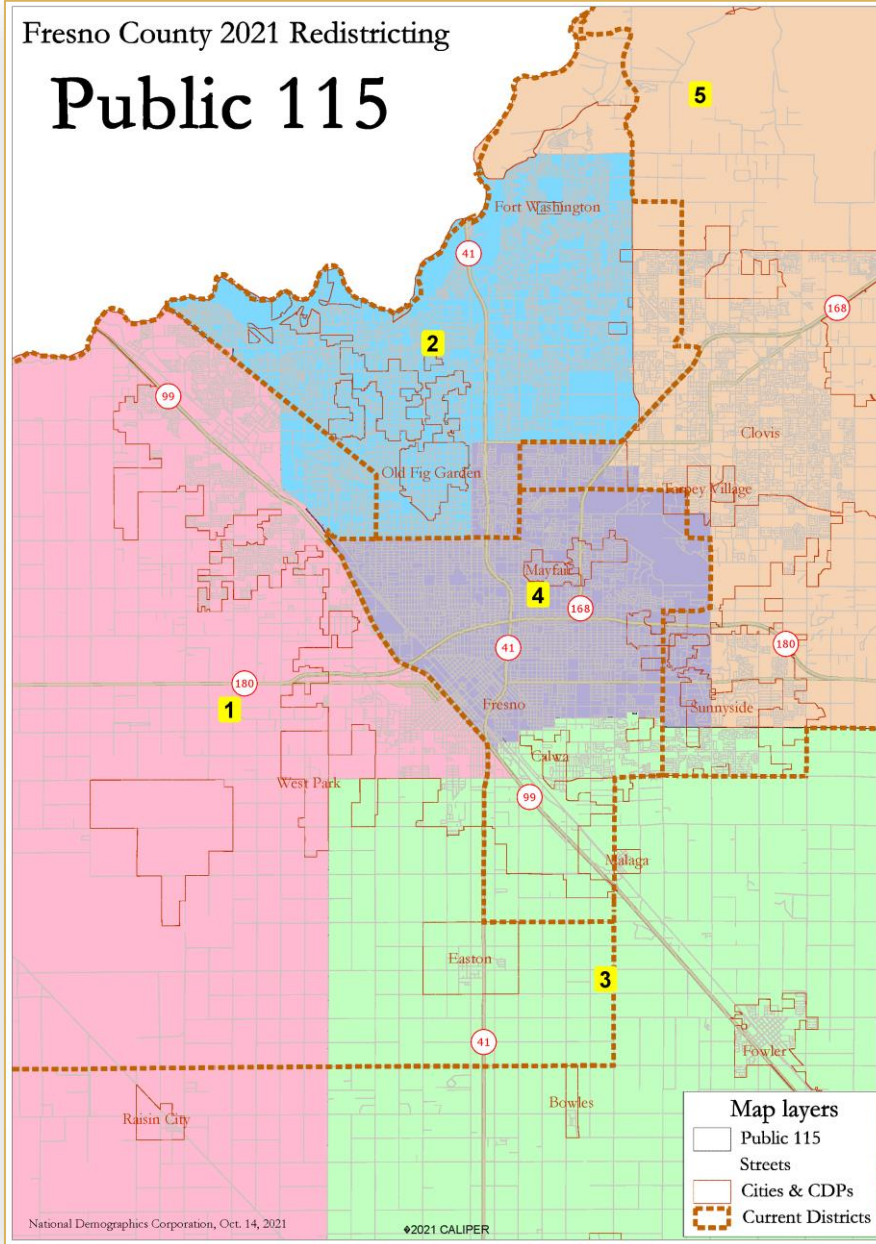
# Public Map 115

Fresno County 2021 Redistricting

## Public 115



# Public Map 115



Fresno County Public 115							
District	1	2	3	4	5	Total	
Total Pop	198,030	198,715	202,910	206,813	201,962	1,008,530	
Deviation from ideal	-3,676	-2,991	1,204	5,207	256	8,883	
% Deviation	-1.82%	-1.48%	0.60%	2.58%	0.13%	4.40%	
% Hisp	85.9%	37%	73%	63%	30%	54%	
% NH White	15%	42%	15%	16%	47%	27%	
% NH Black	6%	6%	2%	7%	3%	5%	
% Asian-American	10%	11%	9%	12%	16%	12%	
Total	96,724	141,606	104,559	115,887	126,271	585,047	
Citizen Voting Age Pop	53%	28%	61%	52%	25%	42%	
% NH White	27%	54%	25%	27%	59%	40%	
% NH Black	9%	6%	3%	8%	3%	6%	
% Asian-Pac Isl	10%	10%	9%	12%	12%	11%	
Total	83,595	118,139	90,193	88,466	123,587	503,980	
Voter Registration (Nov 2020)	52%	28%	61%	53%	23%	41%	
% Latino est.	48%	25%	57%	49%	22%	38%	
% Asian-Sumamed	6%	5%	5%	3%	5%	5%	
% Filipino-Sumamed	1%	1%	1%	1%	1%	1%	
% NH White est.	30%	62%	29%	35%	68%	48%	
% NH Black	11%	6%	4%	10%	3%	6%	
Total	56,370	92,831	62,719	53,844	100,347	366,211	
Voter Turnout (Nov 2020)	49%	25%	58%	50%	22%	37%	
% Spanish-Sumamed	46%	23%	54%	47%	20%	35%	
% Asian-Sumamed	6%	5%	5%	3%	5%	5%	
% Filipino-Sumamed	1%	1%	1%	1%	1%	1%	
% NH White est.	33%	64%	33%	38%	70%	52%	
% NH Black	10%	5%	4%	9%	3%	5%	
Total	35,958	67,428	41,630	34,305	68,308	247,629	
Voter Turnout (Nov 2018)	45%	21%	53%	46%	19%	33%	
% Spanish-Sumamed	43%	20%	50%	44%	18%	31%	
% Asian-Sumamed	5%	4%	5%	2%	4%	4%	
% Filipino-Sumamed	1%	1%	1%	1%	1%	1%	
% NH White est.	37%	69%	38%	41%	74%	56%	
% NH Black est.	10%	5%	3%	8%	2%	5%	
ACS Pop. Est.	Total	194,603	199,663	201,864	200,009	185,131	981,270
Age	age0-19	34%	26%	34%	32%	30%	31%
age20-60	52%	52%	50%	54%	50%	52%	
age60plus	14%	21%	16%	14%	20%	17%	
Immigration	immigrants	29%	15%	27%	22%	13%	21%
naturalized	31%	57%	34%	39%	64%	41%	
Language spoken at home	english	43%	72%	39%	48%	76%	55%
spanish	47%	16%	54%	42%	13%	35%	
asian-lang	4%	6%	4%	9%	7%	6%	
other lang	6%	6%	3%	2%	4%	4%	
Language Fluency	Speaks Eng. "Less than Very Well"	29%	9%	27%	21%	7%	19%
Education (among those age 25+)	hs-grad	45%	44%	46%	48%	48%	46%
bachelor	9%	22%	9%	9%	20%	14%	
graduatedegree	3%	13%	4%	4%	11%	7%	
Child in Household	child-under18	48%	31%	47%	41%	38%	40%
Pct of Pop. Age 16+	employed	61%	63%	60%	58%	63%	61%
Household Income	income 0-25k	26%	18%	26%	37%	14%	24%
income 25-50k	25%	20%	27%	27%	18%	23%	
income 50-75k	19%	18%	17%	16%	16%	17%	
income 75-200k	27%	36%	28%	18%	44%	31%	
income 200k-plus	3%	8%	3%	1%	9%	5%	
Housing Stats	single family	80%	68%	82%	60%	85%	74%
multi-family	20%	32%	18%	40%	15%	26%	
rented	49%	46%	45%	63%	30%	47%	
owned	51%	54%	55%	37%	70%	53%	

Total population data from the 2020 Decennial Census.

Surname-based Voter Registration and Turnout data from the California Statewide Database.

Latino voter registration and turnout data are Spanish-surname counts adjusted using Census Population Department undercount estimates. NH White and NH Black registration and turnout counts estimated by NDC. Citizen Voting Age Pop., Age, Immigration, and other demographics from the 2015-2019 American Community Survey and Special Tabulation 5-year data.

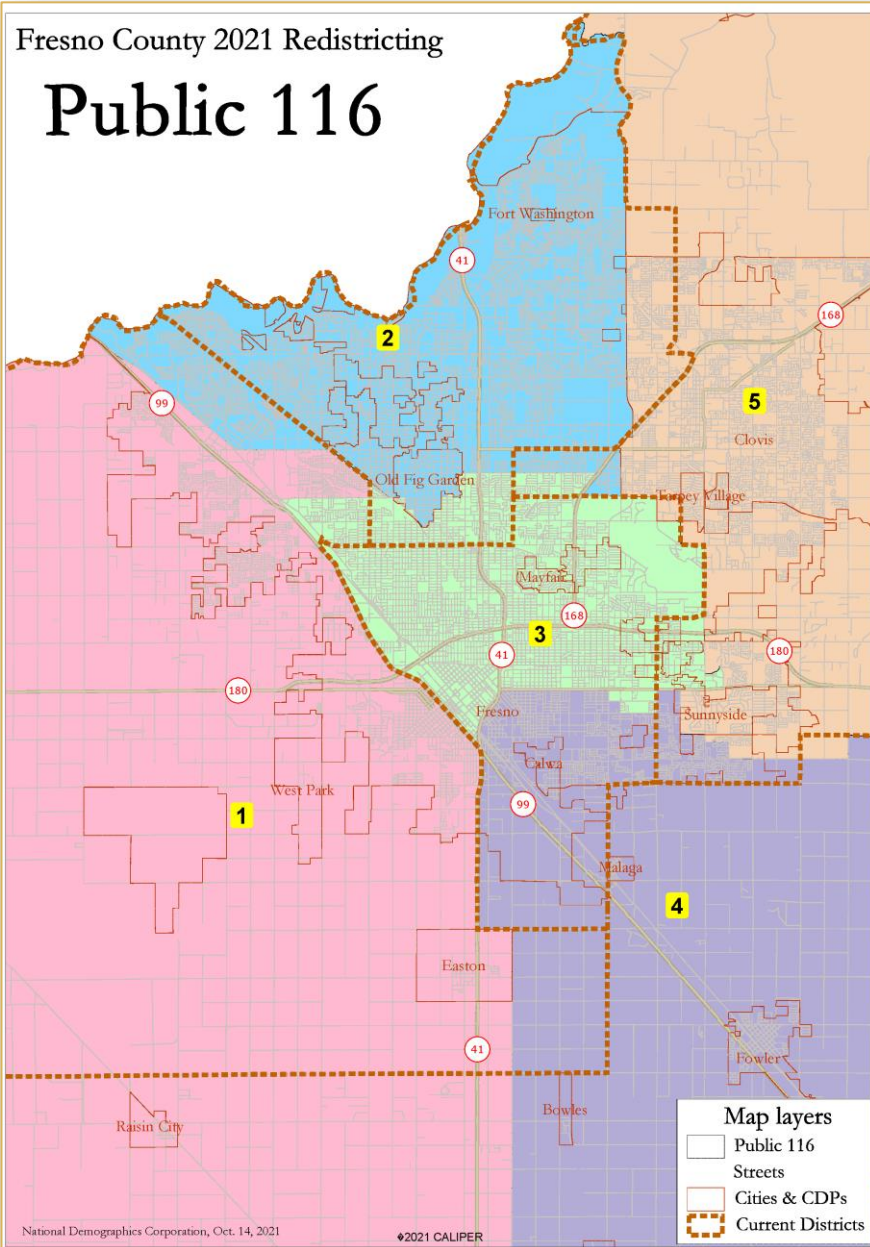




# Public Map 116

Fresno County 2021 Redistricting

## Public 116



National Demographics Corporation, Oct. 14, 2021

©2021 CALIPER

Fresno County Public 116

District		1	2	3	4	5	Total
	Total Pop	201,891	201,703	201,722	201,704	201,710	1,008,530
	Deviation from ideal	-15	-3	16	-2	4	31
	% Deviation	-0.01%	0.00%	0.01%	0.00%	0.00%	0.02%
Total Pop	% Hisp	67.7%	34%	62%	74%	30%	54%
	% NH White	14%	43%	16%	14%	47%	27%
	% NH Black	6%	6%	7%	2%	3%	5%
	% Asian-American	9%	13%	11%	8%	15%	12%
	Total	97,703	143,888	113,188	103,476	126,991	585,047
Citizen Voting Age Pop	% Hisp	54%	27%	51%	63%	25%	42%
	% NH White	26%	55%	27%	23%	59%	40%
	% NH Black	9%	6%	9%	2%	3%	6%
	% AsianPac.Isl.	9%	11%	11%	9%	12%	11%
	Total	82,978	122,858	85,859	88,763	123,522	503,980
Voter Registration (Nov 2020)	% Latino est.	54%	26%	52%	64%	24%	41%
	% Spanish-Surnamed	50%	24%	48%	59%	22%	38%
	% Asian-Surnamed	5%	6%	3%	5%	5%	5%
	% Filipino-Surnamed	1%	1%	1%	1%	1%	1%
	% NH White est.	29%	63%	35%	28%	68%	48%
	% NH Black	12%	5%	10%	4%	3%	6%
	Total	54,483	98,545	52,101	60,965	100,117	366,211
Voter Turnout (Nov 2020)	% Latino est.	50%	24%	50%	60%	22%	37%
	% Spanish-Surnamed	47%	22%	47%	56%	21%	35%
	% Asian-Surnamed	6%	6%	3%	5%	5%	5%
	% Filipino-Surnamed	1%	1%	1%	1%	1%	1%
	% NH White est.	32%	65%	37%	32%	69%	52%
	% NH Black	11%	5%	9%	3%	3%	5%
	Total	34,727	71,191	32,846	40,766	68,099	247,629
Voter Turnout (Nov 2018)	% Latino est.	46%	20%	45%	55%	19%	33%
	% Spanish-Surnamed	44%	19%	43%	52%	18%	31%
	% Asian-Surnamed	5%	5%	2%	4%	4%	4%
	% Filipino-Surnamed	1%	1%	1%	1%	1%	1%
	% NH White est.	35%	69%	41%	36%	73%	56%
% NH Black est.	11%	4%	9%	3%	2%	5%	
ACS Pop. Est.	Total	198,580	200,038	195,386	201,353	185,913	981,270
Age	age0-19	34%	26%	33%	34%	30%	31%
	age20-80	51%	53%	53%	50%	50%	52%
	age60plus	14%	21%	14%	16%	20%	17%
Immigration	immigrants	29%	15%	21%	28%	13%	21%
	naturalized	30%	59%	38%	34%	64%	41%
Language spoken at home	english	41%	73%	49%	38%	76%	55%
	spanish	50%	14%	41%	55%	13%	35%
	asian-lang	4%	6%	8%	4%	7%	6%
	other lang	5%	7%	2%	3%	4%	4%
Language Fluency	Speaks Eng. "Less than Very Well"	30%	8%	20%	27%	7%	19%
Education (among those age 25+)	hs-grad	45%	43%	49%	46%	48%	46%
	bachelor	8%	24%	8%	9%	20%	14%
	graduate-degree	2%	14%	3%	4%	11%	7%
Child in Household	child-under18	48%	31%	41%	47%	38%	40%
Pct of Pop. Age 16+	employed	60%	65%	58%	60%	64%	61%
	income 0-25k	28%	16%	38%	27%	13%	24%
	income 25-50k	26%	20%	26%	27%	18%	23%
	income 50-75k	19%	19%	16%	17%	16%	17%
	income 75-200k	25%	38%	18%	27%	45%	31%
income 200k-plus	2%	8%	1%	2%	9%	5%	
Housing Stats	single family	79%	70%	59%	80%	86%	74%
	multi-family	21%	30%	41%	20%	14%	26%
	rented	52%	44%	64%	46%	30%	47%
owned	48%	56%	36%	54%	70%	53%	

Total population data from the 2020 Decennial Census.

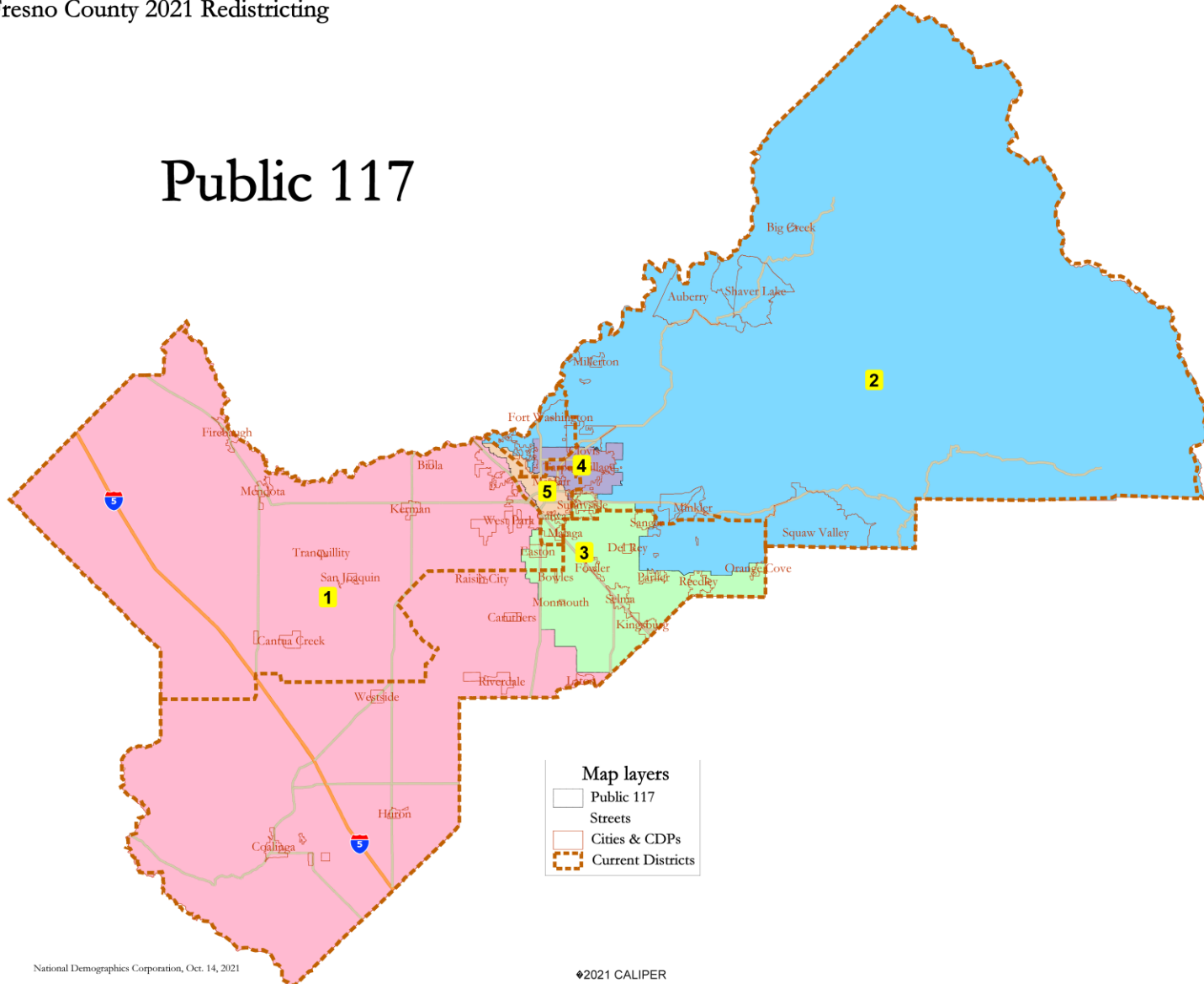
Surname-based Voter Registration and Turnout data from the California Statewide Database.

Latino voter registration and turnout data are Spanish-surname counts adjusted using Census Population Department undercount estimates. NH White and NH Black registration and turnout counts estimated by NDC. Citizen Voting Age Pop., Age, Immigration, and other demographics from the 2015-2019 American Community Survey and Special Tabulation 5-year data.

# Public Map 117

Fresno County 2021 Redistricting

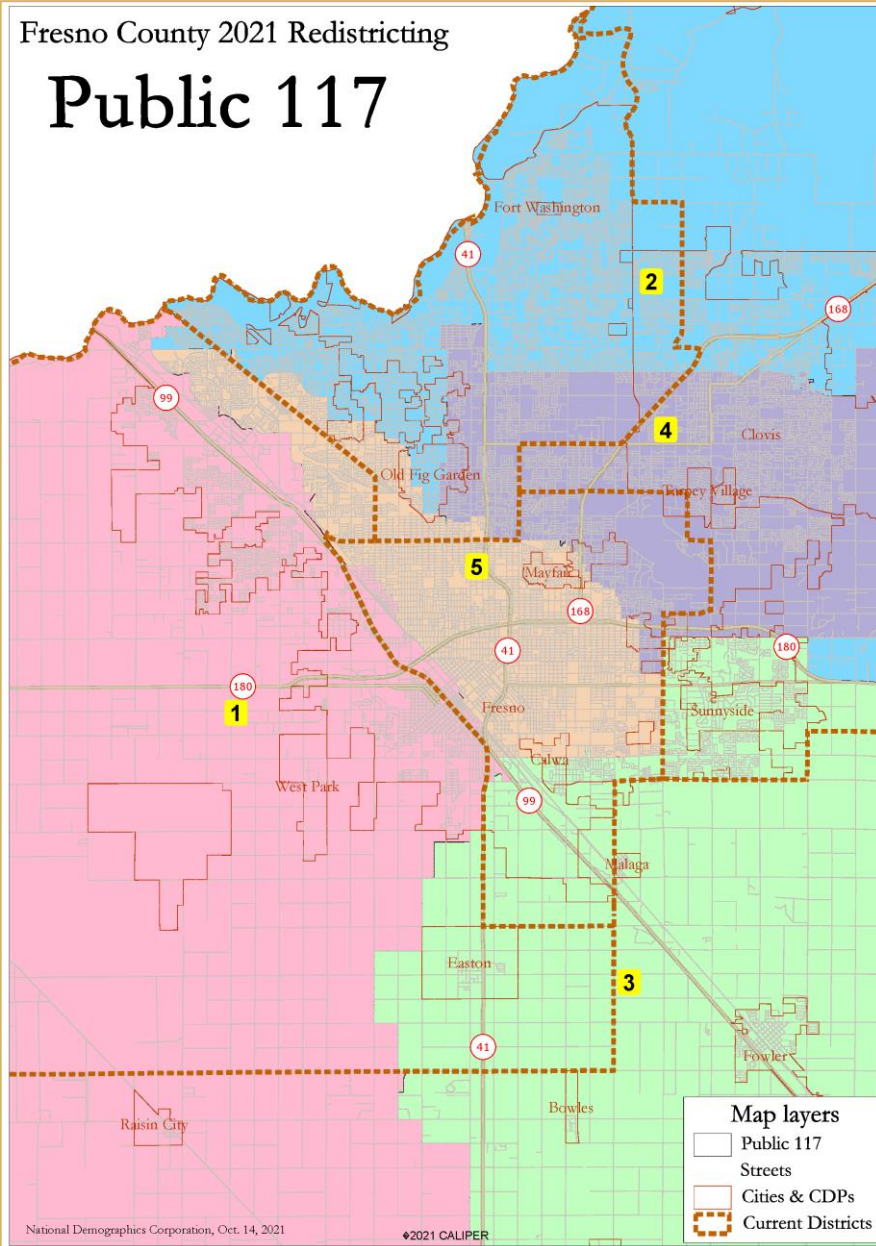
## Public 117



# Public Map 117

Fresno County 2021 Redistricting

## Public 117



National Demographics Corporation, Oct. 14, 2021

©2021 CALIPER

Fresno County Public 117						
District	1	2	3	4	5	Total
Total Pop	197,478	199,827	199,109	202,695	209,421	1,008,530
Deviation from ideal	-4,228	-1,879	-2,597	989	7,715	11,943
% Deviation	-2.10%	-0.93%	-1.29%	0.49%	3.82%	5.92%
% Hisp	68.0%	26%	70%	42%	62%	54%
% NH White	14%	54%	15%	34%	18%	27%
% NH Black	6%	3%	2%	5%	8%	5%
% Asian-American	10%	13%	11%	15%	10%	12%
Citizen Voting Age Pop	93,964	141,317	104,288	128,266	117,211	585,047
% Hisp	55%	20%	60%	36%	50%	42%
% NH White	26%	65%	25%	45%	29%	40%
% NH Black	9%	3%	2%	6%	10%	6%
% Asian-Pac Isl	9%	10%	11%	12%	10%	11%
Voter Registration (Nov 2020)	80,125	132,367	90,970	107,839	92,679	503,980
% Latno est	54%	19%	60%	34%	51%	41%
% Spanish-Sumamed	50%	18%	55%	31%	47%	38%
% Asian-Sumamed	6%	6%	5%	4%	3%	5%
% Filipino-Sumamed	1%	1%	1%	1%	1%	1%
% NH White est	28%	71%	32%	56%	35%	48%
% NH Black	12%	3%	3%	6%	11%	6%
Voter Turnout (Nov 2020)	52,632	111,232	64,239	79,423	58,895	366,211
% Latno est	50%	18%	56%	32%	48%	37%
% Spanish-Sumamed	47%	17%	52%	29%	44%	35%
% Asian-Sumamed	6%	5%	5%	4%	3%	5%
% Filipino-Sumamed	1%	1%	1%	1%	1%	1%
% NH White est	32%	73%	35%	59%	39%	52%
% NH Black	10%	2%	3%	5%	10%	5%
Voter Turnout (Nov 2018)	33,429	81,994	42,723	51,544	37,939	247,629
% Latno est	46%	15%	52%	27%	43%	33%
% Spanish-Sumamed	44%	15%	49%	26%	41%	31%
% Asian-Sumamed	5%	4%	5%	3%	3%	4%
% Filipino-Sumamed	1%	1%	1%	1%	1%	1%
% NH White est	35%	76%	40%	63%	43%	56%
% NH Black est	10%	2%	2%	5%	9%	5%
ACS Pop. Est	194,567	196,755	197,177	192,891	199,890	981,270
Age						
age0-19	35%	26%	34%	31%	31%	31%
age20-60	51%	50%	51%	53%	54%	52%
age60plus	14%	24%	15%	16%	15%	17%
Immigration						
immigrants	30%	13%	26%	15%	22%	21%
naturalized	29%	62%	37%	55%	38%	41%
Language spoken at home						
english	40%	78%	42%	66%	51%	55%
spanish	51%	11%	50%	22%	39%	35%
asian-lang	4%	6%	4%	9%	7%	6%
other lang	5%	6%	4%	4%	3%	4%
Language Fluency						
Speaks Eng "Less than Very Well"	31%	7%	25%	11%	20%	19%
Education (among those age 25+)						
hs-grad	44%	40%	46%	52%	48%	46%
bachelor	8%	26%	10%	15%	10%	14%
graduatedegree	2%	16%	4%	7%	5%	7%
Child in Household	50%	31%	48%	38%	39%	40%
Pct of Pop. Age 16+	60%	63%	61%	63%	59%	61%
Household Income						
income 0-25k	28%	11%	24%	24%	35%	24%
income 25-50k	26%	15%	26%	24%	26%	23%
income 50-75k	18%	16%	17%	19%	16%	17%
income 75-200k	25%	46%	30%	31%	21%	31%
income 200k-plus	2%	12%	3%	3%	2%	5%
Housing Stats						
single family	80%	84%	81%	65%	62%	74%
multi-family	20%	16%	19%	35%	38%	26%
rented	51%	30%	42%	51%	61%	47%
owned	49%	70%	58%	49%	39%	53%

Total population data from the 2020 Decennial Census.

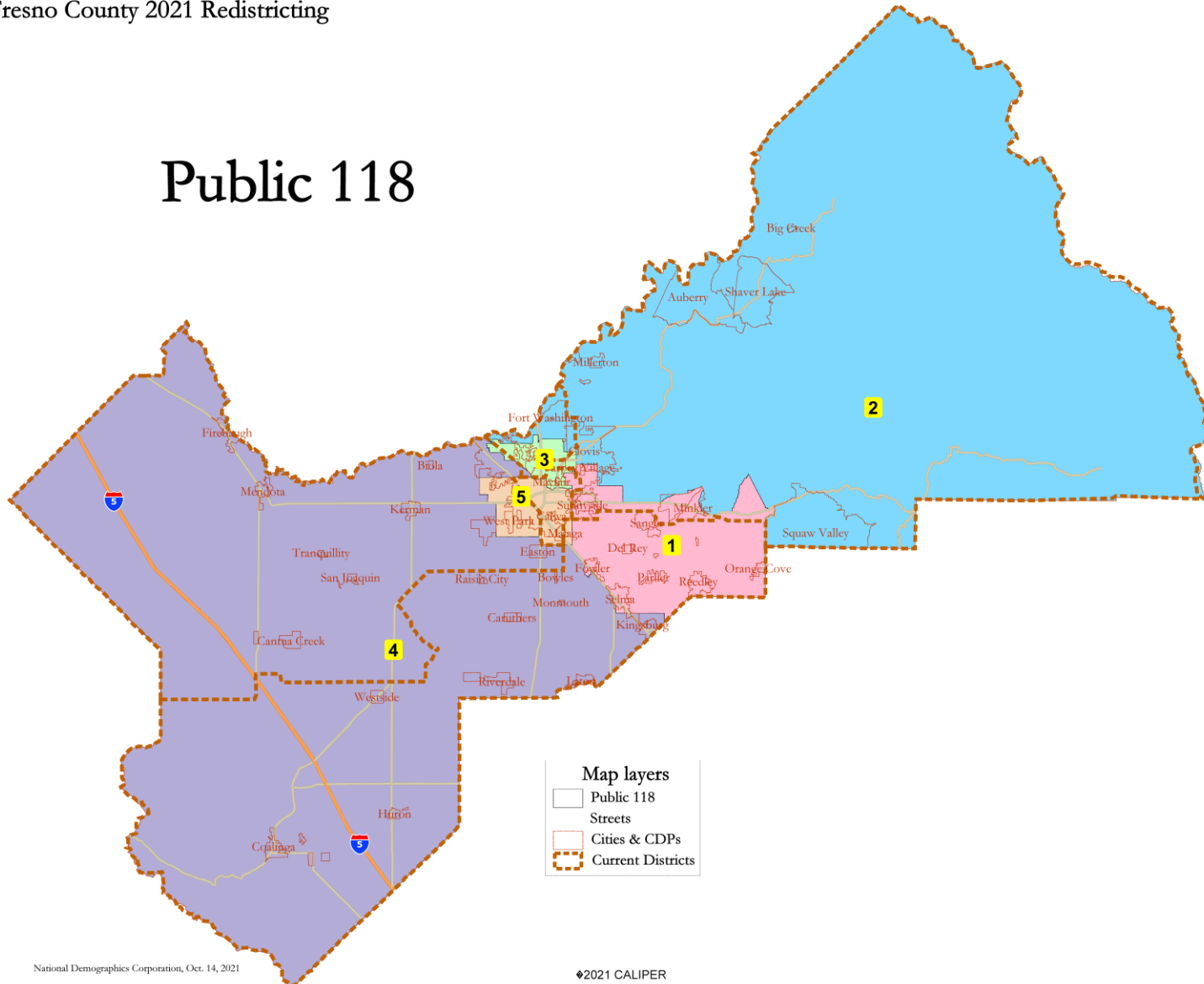
Surname-based Voter Registration and Turnout data from the California Statewide Database

Latino voter registration and turnout data are Spanish-Sumame counts adjusted using Census Population Department undercount estimates. NH White and NH Black registration and turnout counts estimated by NDC. Citizen Voting Age Pop., Age, Immigration, and other demographics from the 2015-2019 American Community Survey and Special Tabulation 5-year data.

# Public Map 118

Fresno County 2021 Redistricting

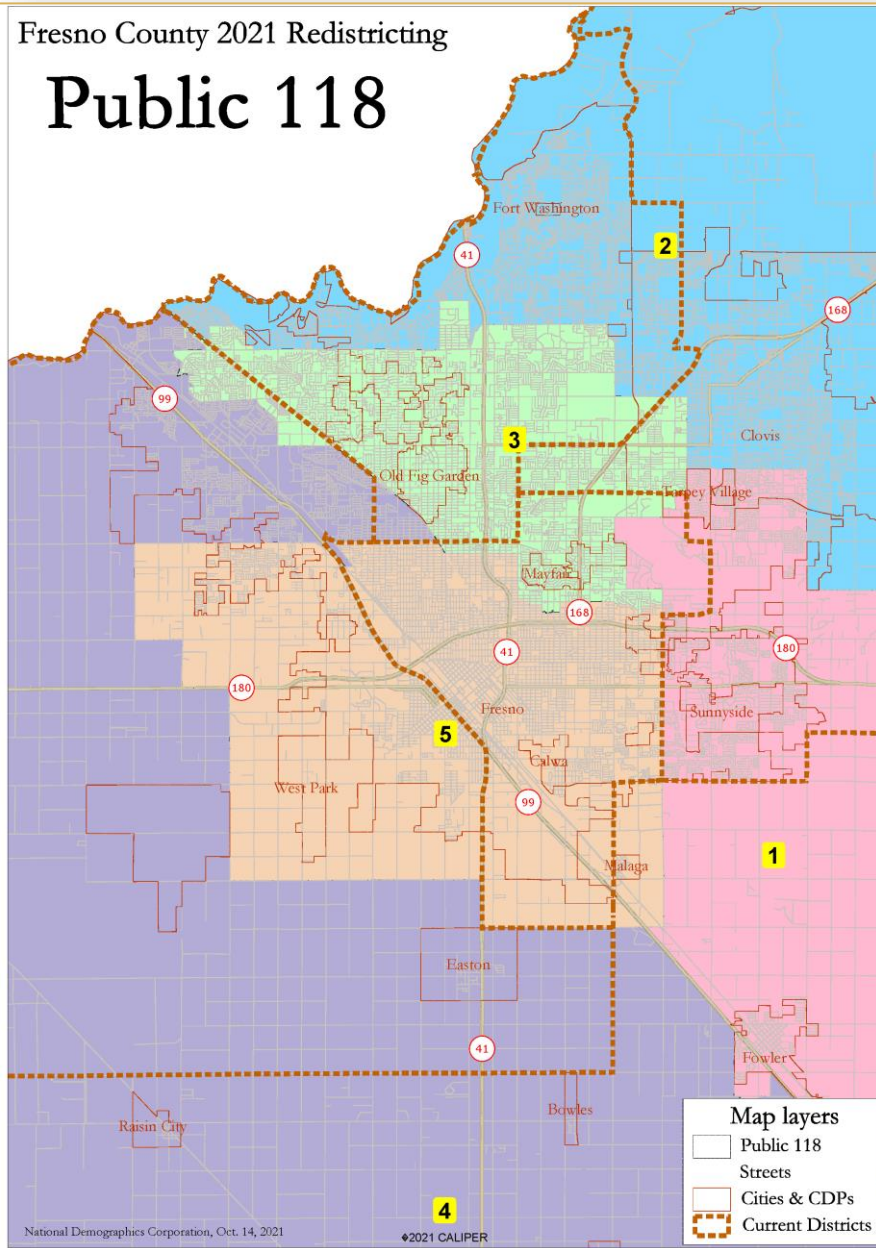
## Public 118



# Public Map 118

Fresno County 2021 Redistricting

## Public 118



National Demographics Corporation, Oct. 14, 2021

©2021 CALIPER

Fresno County Public 118						
District	1	2	3	4	5	Total
Total Pop	196,299	208,732	199,748	197,783	205,968	1,008,530
Deviation from ideal	-5,407	7,026	-1,958	-3,923	4,262	12,433
% Deviation	-2.68%	3.48%	-0.97%	-1.94%	2.11%	6.16%
% Hisp	66.6%	25%	46%	67%	65%	54%
% NH White	17%	53%	32%	19%	12%	27%
% NH Black	2%	3%	7%	4%	8%	5%
% Asian-American	12%	15%	11%	8%	12%	12%
Citizen Voting Age Pop	103,863	137,685	136,286	99,702	107,510	585,047
% Hisp	57%	20%	36%	52%	55%	42%
% NH White	27%	65%	45%	32%	21%	40%
% NH Black	2%	2%	7%	6%	11%	6%
% Asian/Pac Isl.	12%	11%	9%	8%	12%	11%
Voter Registration (Nov 2020)	91,805	136,153	105,679	85,142	85,201	503,980
% Latino est.	56%	19%	36%	52%	55%	41%
% Spanish-Sumamed	52%	16%	33%	49%	50%	38%
% Asian-Sumamed	6%	6%	3%	5%	4%	5%
% Filipino-Sumamed	1%	1%	1%	1%	1%	1%
% NH White est.	35%	71%	54%	36%	26%	48%
% NH Black	3%	2%	7%	6%	15%	6%
Voter Turnout (Nov 2020)	65,674	114,151	76,893	59,328	50,165	366,211
% Latino est.	53%	18%	33%	48%	52%	37%
% Spanish-Sumamed	49%	17%	31%	45%	49%	35%
% Asian-Sumamed	5%	6%	3%	6%	3%	5%
% Filipino-Sumamed	1%	1%	1%	1%	1%	1%
% NH White est.	38%	73%	57%	39%	29%	52%
% NH Black	3%	2%	6%	6%	14%	5%
Voter Turnout (Nov 2018)	43,336	80,400	53,550	38,661	31,682	247,629
% Latino est.	49%	15%	28%	43%	49%	33%
% Spanish-Sumamed	46%	15%	26%	41%	46%	31%
% Asian-Sumamed	5%	5%	3%	5%	3%	4%
% Filipino-Sumamed	1%	1%	1%	1%	1%	1%
% NH White est.	42%	76%	62%	44%	31%	56%
% NH Black est.	3%	2%	6%	6%	14%	5%
ACS Pop. Est.	191,503	195,538	200,060	195,542	198,627	981,270
Age						
age0-19	34%	28%	29%	34%	33%	31%
age20-60	51%	50%	53%	52%	53%	52%
age60plus	15%	22%	19%	15%	14%	17%
Immigration						
immigrants	25%	13%	15%	28%	25%	21%
naturalized	38%	65%	50%	30%	36%	41%
Language spoken at home						
english	44%	79%	67%	45%	42%	55%
spanish	47%	10%	22%	47%	47%	35%
asian-lang	6%	6%	7%	3%	8%	6%
other lang	3%	5%	4%	5%	3%	4%
Language Fluency						
Speaks Eng. "Less than Very Well"	23%	6%	11%	27%	26%	19%
Education (among those age 25+)						
hs-grad	47%	41%	51%	45%	46%	46%
bachelor	11%	25%	16%	9%	7%	14%
graduatedegree	5%	16%	8%	3%	3%	7%
Child in Household	48%	34%	33%	47%	43%	40%
Pct of Pop. Age 16+						
employed	62%	65%	62%	61%	57%	61%
Household Income						
income 0-25k	23%	10%	24%	26%	39%	24%
income 25-50k	25%	15%	25%	26%	26%	23%
income 50-75k	17%	15%	20%	17%	17%	17%
income 75-200k	32%	48%	28%	28%	18%	31%
income 200k-plus	3%	12%	3%	3%	1%	5%
Housing Stats						
single family	82%	86%	60%	78%	66%	74%
multi-family	18%	14%	40%	22%	34%	26%
rented	39%	28%	55%	50%	62%	47%
owned	61%	72%	45%	50%	38%	53%

Total population data from the 2020 Decennial Census.

Surname-based Voter Registration and Turnout data from the California Statewide Database.

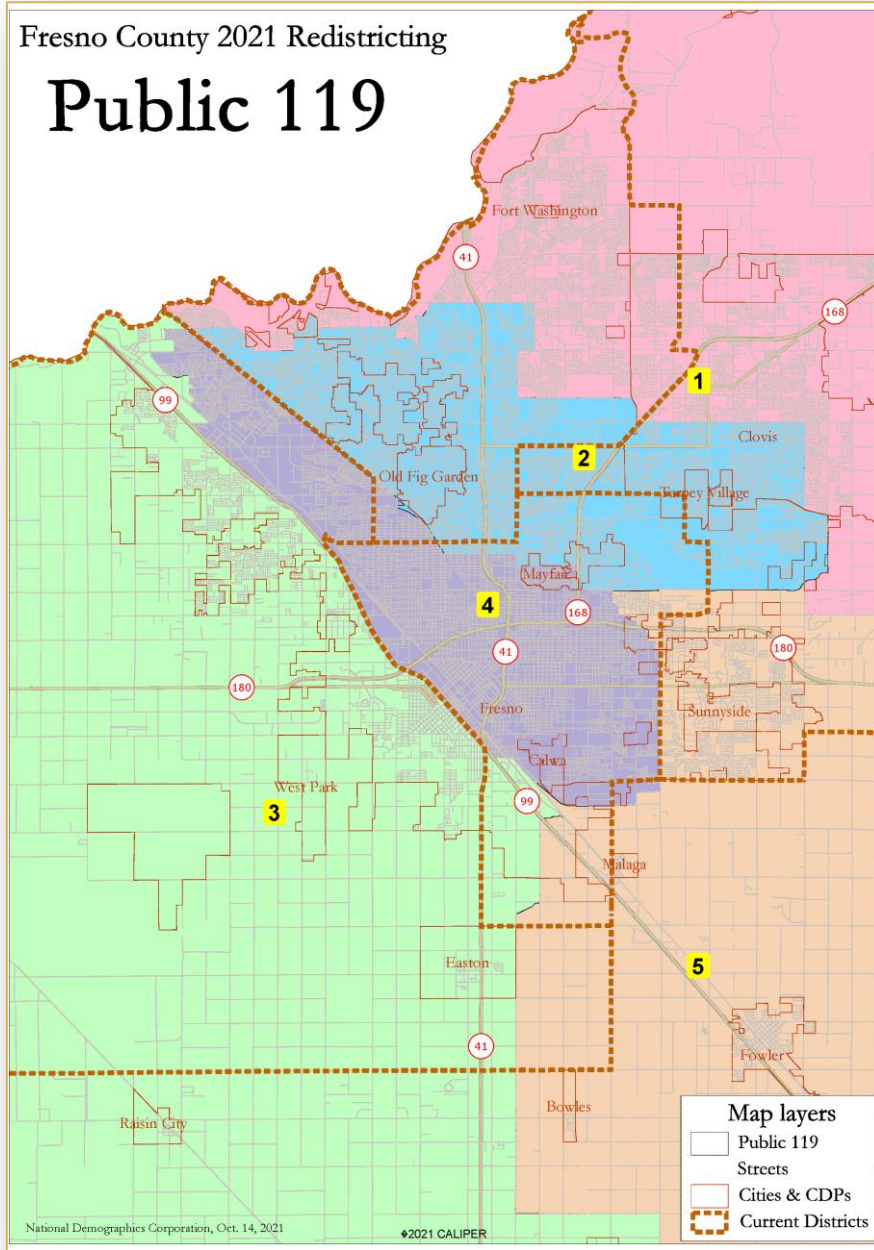
Latino voter registration and turnout data are Spanish-surname counts adjusted using Census Population Department undercount estimates. NH White and NH Black registration and turnout counts estimated by NDC. Citizen Voting Age Pop., Age, Immigration, and other demographics from the 2010-2019 American Community Survey and Special Tabulation 5-year data.



# Public Map 119

Fresno County 2021 Redistricting

## Public 119



National Demographics Corporation, Oct. 14, 2021

2021 CALIPER

**Map layers**

- Public 119
- Streets
- Cities & CDPs
- Current Districts

Fresno County Public 119							
District	1	2	3	4	5	Total	
Total Pop	Total Pop	204,959	200,381	197,618	208,579	196,993	1,008,530
	Deviation from ideal	3,253	-1,325	-4,088	6,873	-4,713	11,586
	% Deviation	1.61%	-0.66%	-2.03%	3.41%	-2.34%	5.74%
	% Hisp	25.3%	43%	68%	63%	69%	54%
	% NH White	53%	35%	14%	16%	16%	27%
Citizen Voting Age Pop	% NH Black	3%	6%	6%	8%	2%	5%
	% Asian-American	14%	12%	10%	11%	11%	12%
	Total	136,462	137,047	93,938	114,206	103,395	585,047
	% Hisp	21%	35%	55%	52%	59%	42%
Voter Registration (Nov 2020)	% NH White	64%	48%	26%	26%	25%	40%
	% NH Black	2%	6%	8%	10%	2%	6%
	% Asian/Pac Isl.	11%	10%	9%	10%	12%	11%
	Total	132,667	111,360	80,475	89,461	90,017	503,980
	% Latino est.	19%	34%	54%	49%	59%	41%
Voter Turnout (Nov 2020)	% Spanish-Sumamed	18%	31%	50%	49%	54%	38%
	% Asian-Sumamed	6%	4%	6%	3%	5%	5%
	% Filipino-Sumamed	1%	1%	1%	1%	1%	1%
	% NH White est.	71%	57%	29%	32%	33%	48%
	% NH Black	2%	6%	11%	12%	3%	6%
Voter Turnout (Nov 2018)	Total	111,052	83,038	53,213	55,231	63,677	306,211
	% Latino est.	18%	31%	50%	50%	55%	37%
	% Spanish-Sumamed	17%	29%	47%	47%	51%	35%
	% Asian-Sumamed	6%	4%	6%	3%	6%	5%
	% Filipino-Sumamed	1%	1%	1%	1%	1%	1%
ACS Pop. Est.	% NH White est.	73%	60%	32%	35%	36%	52%
	% NH Black	2%	5%	10%	11%	3%	5%
	Total	78,879	57,393	34,037	35,139	42,181	247,629
	% Latino est.	16%	26%	46%	47%	51%	33%
	% Spanish-Sumamed	15%	24%	44%	44%	48%	31%
Age	% Asian-Sumamed	4%	3%	5%	3%	5%	4%
	% Filipino-Sumamed	1%	1%	1%	1%	1%	1%
	% NH White est.	76%	65%	36%	38%	40%	56%
Immigration	% NH Black est.	2%	5%	10%	10%	2%	5%
	Total	194,841	196,969	194,047	201,396	194,016	981,270
	age0-19	28%	28%	35%	32%	34%	31%
Language spoken at home	age20-60	51%	52%	51%	54%	51%	52%
	age60plus	22%	20%	14%	14%	16%	17%
	immigrants	14%	14%	30%	23%	26%	21%
Language Fluency	naturalized	64%	54%	29%	37%	38%	41%
	english	78%	69%	40%	47%	42%	55%
	spanish	10%	21%	51%	42%	49%	35%
	asian-lang	7%	7%	4%	8%	5%	6%
	other lang	5%	4%	5%	3%	4%	4%
Education (among those age 25+)	Speaks Eng "Less than Very Well"	6%	10%	31%	22%	24%	19%
	hs-grad	42%	51%	44%	47%	47%	40%
	bachelor	25%	16%	8%	9%	11%	14%
Child in Household	graduateddegree	15%	8%	2%	4%	4%	7%
	child-under18	35%	33%	49%	41%	48%	40%
	Pct of Pop. Age 16+	employed	64%	62%	59%	60%	61%
Household Income	income 0-25k	11%	23%	27%	36%	25%	24%
	income 25-50k	15%	23%	26%	27%	26%	23%
	income 50-75k	15%	19%	18%	16%	17%	17%
	income 75-200k	4%	3%	2%	3%	3%	5%
	income 200k-plus	12%	4%	3%	2%	3%	5%
Housing Stats	single family	86%	66%	81%	62%	79%	74%
	multi-family	14%	34%	19%	38%	21%	26%
	rented	30%	49%	50%	63%	42%	47%
	owned	70%	51%	50%	37%	58%	53%

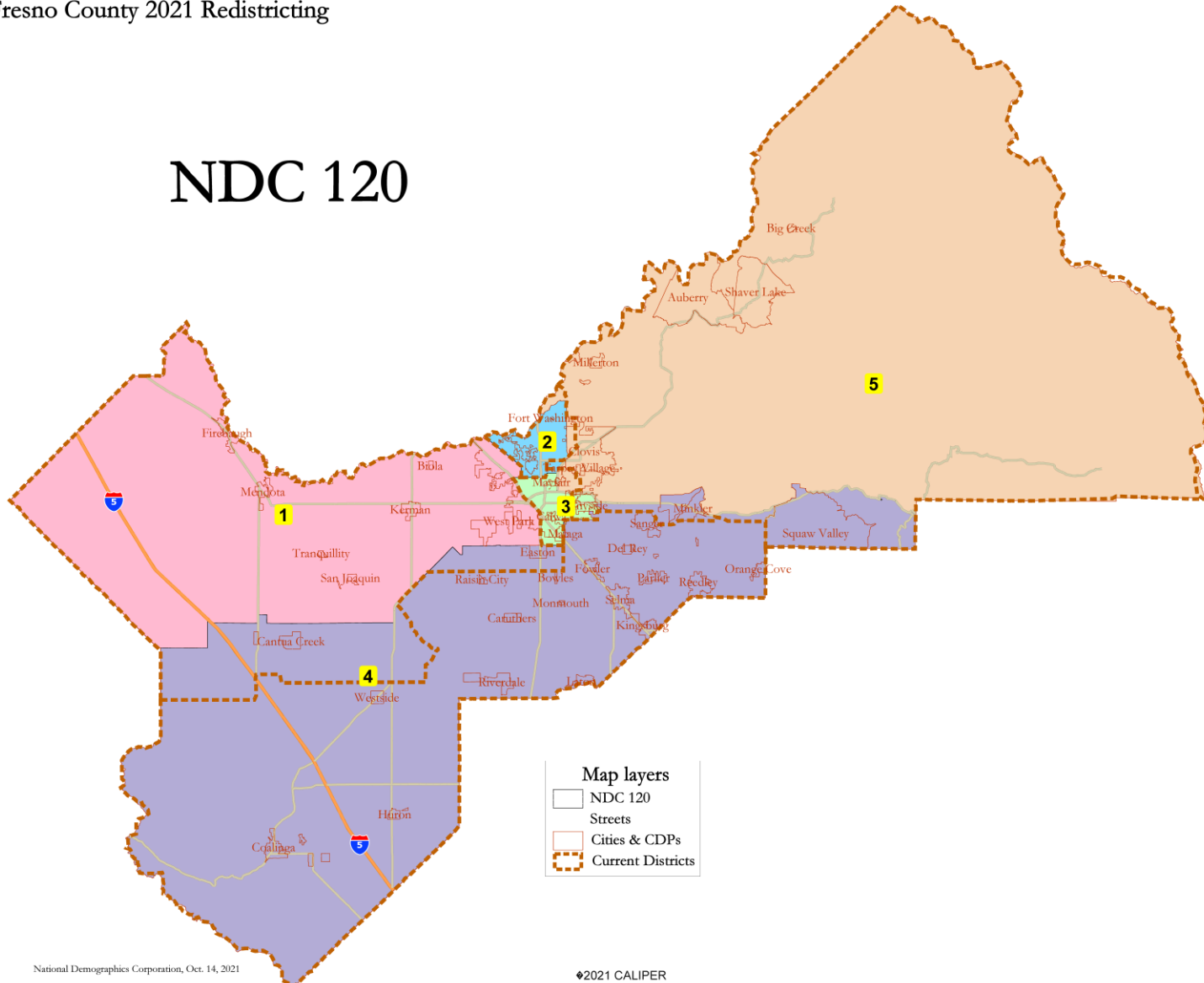
Total population data from the 2020 Decennial Census.  
 Surname-based Voter Registration and Turnout data from the California Statewide Database.  
 Latino voter registration and turnout data are Spanish-sumamed counts adjusted using Census Population Department undercount estimates. NH White and NH Black registration and turnout counts estimated by NDC. Citizen Voting Age Pop, Age, Immigration, and other demographics from the 2015-2019 American Community Survey and Special Tabulation 5-year data.



# NDC Map 120

Fresno County 2021 Redistricting

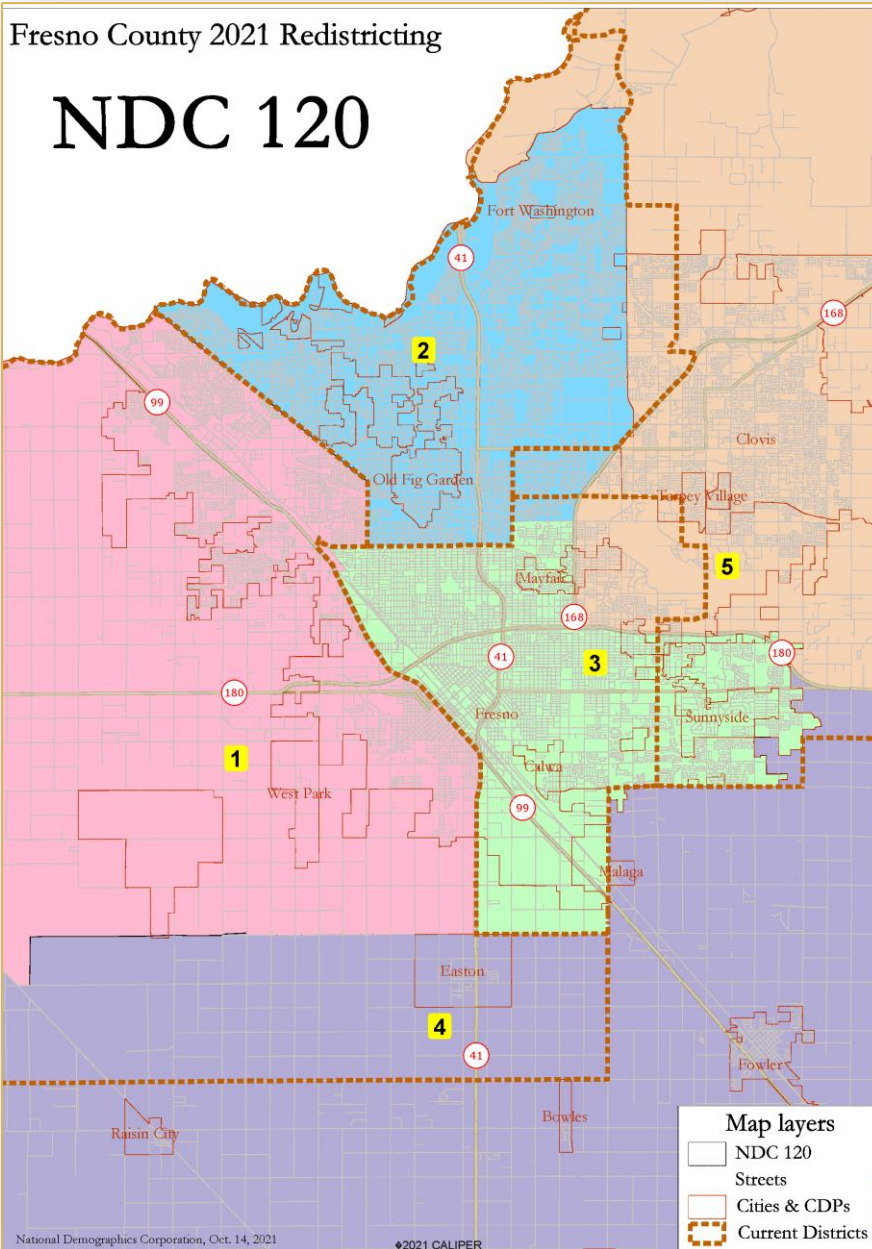
## NDC 120



# NDC Map 120

Fresno County 2021 Redistricting

## NDC 120



**Map layers**

- NDC 120
- Streets
- Cities & CDPs
- Current Districts

Fresno County NDC 120							
District		1	2	3	4	5	Total
	Total Pop	196,923	204,463	203,934	199,565	201,645	1,008,530
	Deviation from ideal	-2,783	2,757	2,228	-2,141	-61	5,540
	% Deviation	-1.38%	1.37%	1.10%	-1.06%	-0.03%	2.75%
Total Pop	% Hisp	62.3%	36%	63%	75%	33%	54%
	% NH White	15%	42%	14%	18%	45%	27%
	% NH Black	8%	6%	6%	1%	3%	5%
	% Asian-American	12%	12%	15%	4%	15%	12%
	Total	101,167	146,339	109,198	102,785	125,557	585,047
Citizen Voting Age Pop	% Hisp	51%	29%	53%	61%	27%	42%
	% NH White	26%	54%	24%	31%	56%	40%
	% NH Black	12%	6%	8%	1%	3%	6%
	% Asian/Pac. Isl.	11%	10%	15%	5%	12%	11%
	Total	87,128	122,636	87,385	86,926	119,905	503,980
Voter Registration (Nov 2020)	% Latino est.	50%	27%	53%	61%	25%	41%
	% Spanish-Surnamed	47%	25%	49%	57%	23%	38%
	% Asian-Surnamed	6%	5%	5%	3%	5%	5%
	% Filipino-Surnamed	1%	1%	1%	1%	1%	1%
	% NH White est.	30%	62%	32%	34%	66%	48%
	% NH Black	14%	5%	10%	1%	3%	6%
	Total	57,850	96,541	54,149	62,226	95,445	366,211
Voter Turnout (Nov 2020)	% Latino est.	48%	25%	51%	56%	23%	37%
	% Spanish-Surnamed	45%	23%	47%	52%	21%	35%
	% Asian-Surnamed	7%	5%	5%	4%	5%	5%
	% Filipino-Surnamed	1%	1%	1%	1%	1%	1%
	% NH White est.	32%	65%	35%	39%	69%	52%
	% NH Black	13%	4%	9%	1%	3%	5%
	Total	36,505	69,614	34,145	42,688	64,497	247,629
Voter Turnout (Nov 2018)	% Latino est.	44%	21%	47%	50%	19%	33%
	% Spanish-Surnamed	42%	20%	45%	48%	18%	31%
	% Asian-Surnamed	5%	4%	4%	3%	4%	4%
	% Filipino-Surnamed	1%	1%	1%	1%	1%	1%
	% NH White est.	35%	69%	38%	44%	73%	56%
	% NH Black est.	13%	4%	8%	1%	3%	5%
ACS Pop. Est.	Total	194,987	205,494	194,958	199,542	186,290	981,270
Age	age0-19	34%	27%	33%	33%	30%	31%
	age20-60	52%	52%	53%	50%	51%	52%
	age60plus	13%	21%	14%	16%	19%	17%
Immigration	immigrants	27%	14%	24%	27%	14%	21%
	naturalized	34%	57%	40%	30%	61%	41%
Language spoken at home	english	46%	72%	44%	42%	74%	55%
	spanish	43%	17%	44%	55%	15%	35%
	asian-lang	5%	6%	10%	1%	6%	6%
	other lang	6%	5%	3%	3%	4%	4%
Language Fluency	Speaks Eng. "Less than Very Well"	27%	9%	23%	26%	9%	19%
	hs-grad	47%	44%	46%	46%	46%	46%
	bachelor	9%	22%	9%	9%	19%	14%
Education (among those age 25+)	graduatedegree	3%	13%	4%	4%	10%	7%
	child-under18	47%	31%	43%	46%	38%	40%
	employed	62%	63%	59%	60%	63%	61%
Pct of Pop. Age 16+	income 0-25k	27%	18%	36%	25%	16%	24%
	income 25-50k	26%	19%	25%	27%	19%	23%
	income 50-75k	19%	18%	16%	17%	16%	17%
	income 75-200k	26%	36%	21%	28%	41%	31%
	income 200k-plus	2%	8%	2%	3%	8%	5%
Household Income	single family	75%	69%	65%	63%	61%	74%
	multi-family	25%	31%	35%	17%	19%	26%
	rented	51%	45%	59%	45%	35%	47%
	owned	49%	55%	41%	55%	65%	53%

Total population data from the 2020 Decennial Census

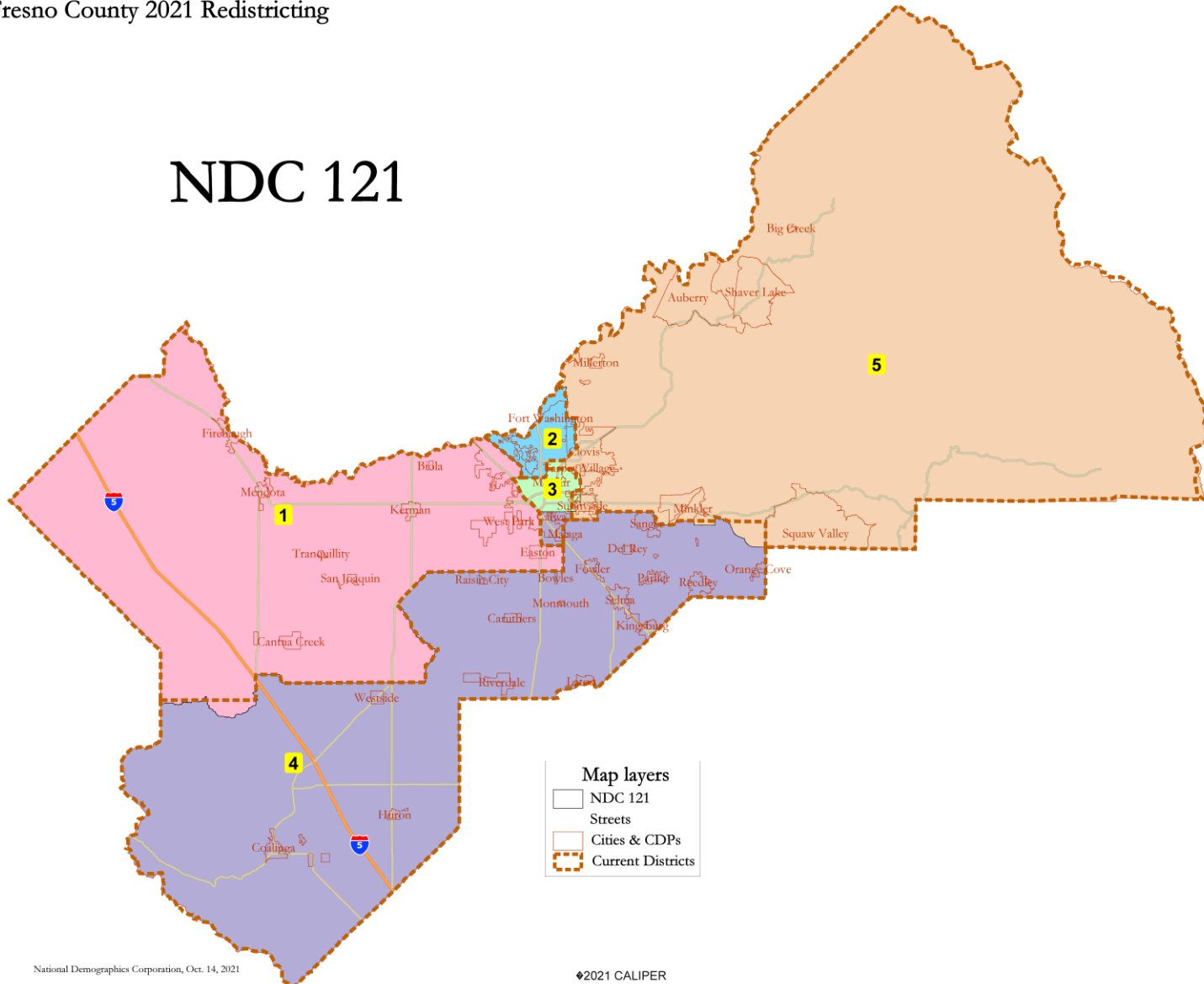
Surname-based Voter Registration and Turnout data from the California Statewide Database

Latino voter registration and turnout data are Spanish-surname counts adjusted using Census Population Department undercount estimates. NH White and NH Black registration and turnout counts estimated by NDC. Citizen Voting Age Pop., Age, Immigration, and other demographics from the 2015-2019 American Community Survey and Special Tabulation 5-year data

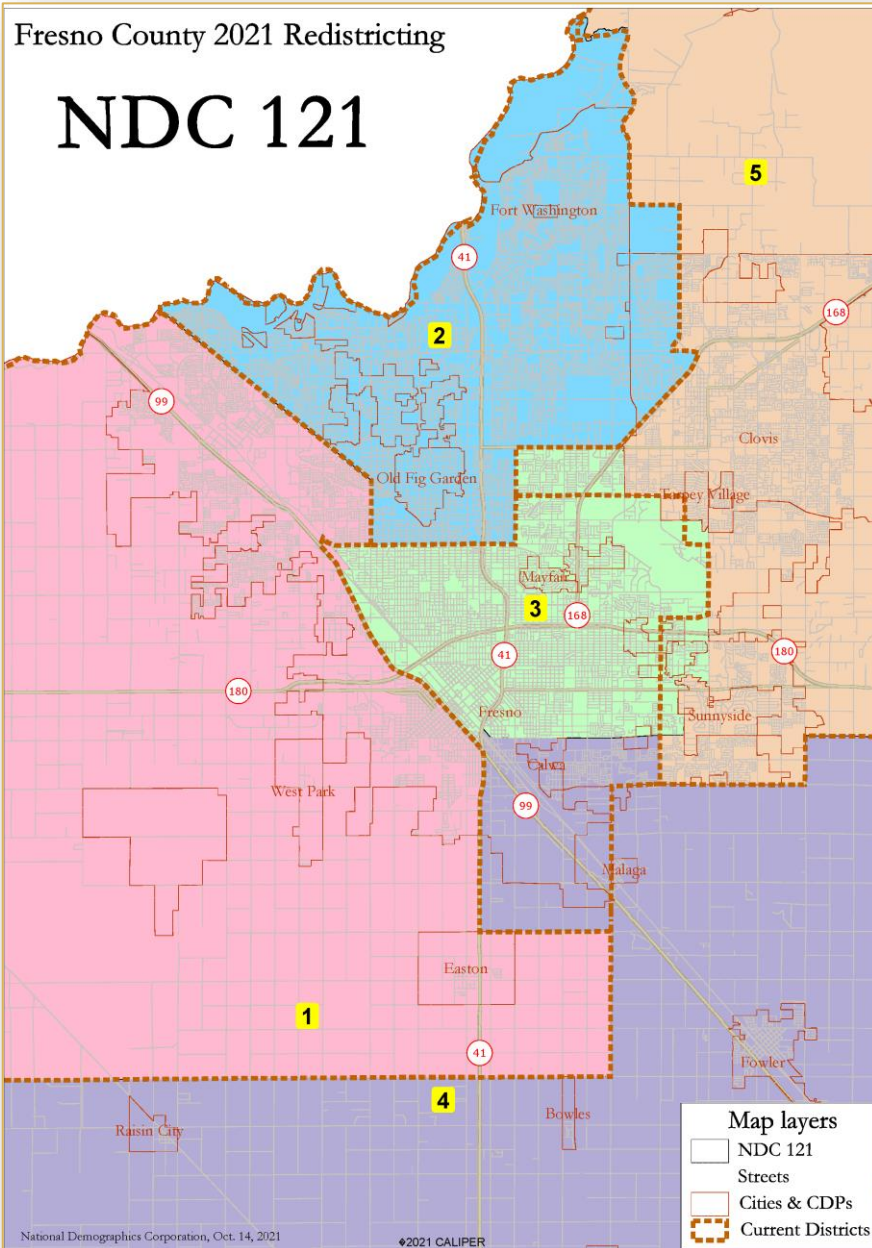
# NDC Map 121

Fresno County 2021 Redistricting

## NDC 121



# NDC Map 121



Fresno County NDC 121							
District	1	2	3	4	5	Total	
Total Pop	205,291	199,107	198,576	203,400	202,156	1,008,530	
Deviation from ideal	3,585	-2,599	-3,130	1,694	450	6,715	
% Deviation	1.78%	-1.29%	-1.55%	0.84%	0.22%	3.33%	
Total Pop	% Hisp	62.5%	34%	63%	77%	31%	54%
	% NH White	16%	45%	15%	15%	44%	27%
	% NH Black	8%	6%	7%	1%	3%	5%
	% Asian-American	12%	12%	12%	5%	17%	12%
	Total	104,740	142,491	110,276	102,738	124,803	585,047
Citizen Voting Age Pop	% Hisp	51%	27%	52%	64%	26%	42%
	% NH White	26%	57%	26%	27%	56%	40%
	% NH Black	11%	5%	8%	2%	3%	6%
	% Asian/Pac. Isl.	10%	10%	12%	6%	14%	11%
	Total	90,015	122,649	83,620	86,628	120,868	503,980
Voter Registration (Nov 2020)	% Latino est.	51%	25%	53%	64%	25%	41%
	% Spanish-Sumamed	47%	24%	49%	59%	23%	38%
	% Asian-Sumamed	6%	5%	3%	4%	6%	5%
	% Filipino-Sumamed	1%	1%	1%	1%	1%	1%
	% NH White est.	30%	64%	34%	30%	65%	48%
	% NH Black	14%	4%	10%	2%	3%	6%
	Total	59,906	98,178	50,714	60,599	96,814	366,211
	Voter Turnout (Nov 2020)	% Latino est.	48%	23%	51%	59%	23%
% Spanish-Sumamed		45%	22%	48%	55%	22%	35%
% Asian-Sumamed		6%	5%	3%	4%	5%	5%
% Filipino-Sumamed		1%	1%	1%	1%	1%	1%
% NH White est.		32%	67%	36%	35%	67%	52%
% NH Black		12%	4%	9%	2%	3%	5%
Total		38,002	71,692	32,043	40,928	64,964	247,629
Voter Turnout (Nov 2018)	% Latino est.	44%	19%	47%	54%	20%	33%
	% Spanish-Sumamed	42%	18%	45%	51%	19%	31%
	% Asian-Sumamed	5%	4%	2%	4%	4%	4%
	% Filipino-Sumamed	1%	1%	1%	1%	1%	1%
	% NH White est.	36%	71%	39%	39%	72%	56%
% NH Black est.	12%	4%	8%	2%	2%	5%	
ACS Pop. Est.	Total	201,645	200,621	190,212	203,855	185,137	981,270
Age	age0-19	34%	27%	32%	34%	30%	31%
	age20-60	52%	51%	54%	50%	51%	52%
	age60plus	14%	22%	14%	16%	19%	17%
Immigration	immigrants	27%	14%	23%	28%	14%	21%
	naturalized	33%	58%	39%	31%	64%	41%
Language spoken at home	english	45%	74%	47%	39%	73%	55%
	spanish	44%	15%	42%	57%	15%	35%
	asian-lang	5%	6%	10%	2%	8%	6%
	other lang	6%	5%	2%	3%	4%	4%
Language Fluency	Speaks Eng. "Less than Very Well"	27%	8%	22%	27%	8%	19%
Education (among those age 25+)	hs-grad	47%	43%	47%	45%	48%	46%
	bachelor	9%	23%	8%	9%	20%	14%
	graduatedegree	3%	14%	3%	4%	10%	7%
Child in Household	child-under18	47%	31%	40%	48%	39%	40%
Pct of Pop. Age 16+	employed	62%	63%	58%	60%	63%	61%
Household Income	income 0-25k	26%	17%	38%	26%	14%	24%
	income 25-50k	26%	18%	27%	27%	18%	23%
	income 50-75k	19%	18%	16%	17%	16%	17%
	income 75-200k	26%	39%	18%	27%	44%	31%
	income 200k-plus	2%	9%	1%	3%	8%	5%
Housing Stats	single family	76%	71%	58%	82%	86%	74%
	multi-family	24%	29%	42%	18%	14%	26%
	rented	51%	43%	65%	46%	30%	47%
owned	49%	57%	35%	54%	70%	53%	

Total population data from the 2020 Decennial Census.

Sumame-based Voter Registration and Turnout data from the California Statewide Database.

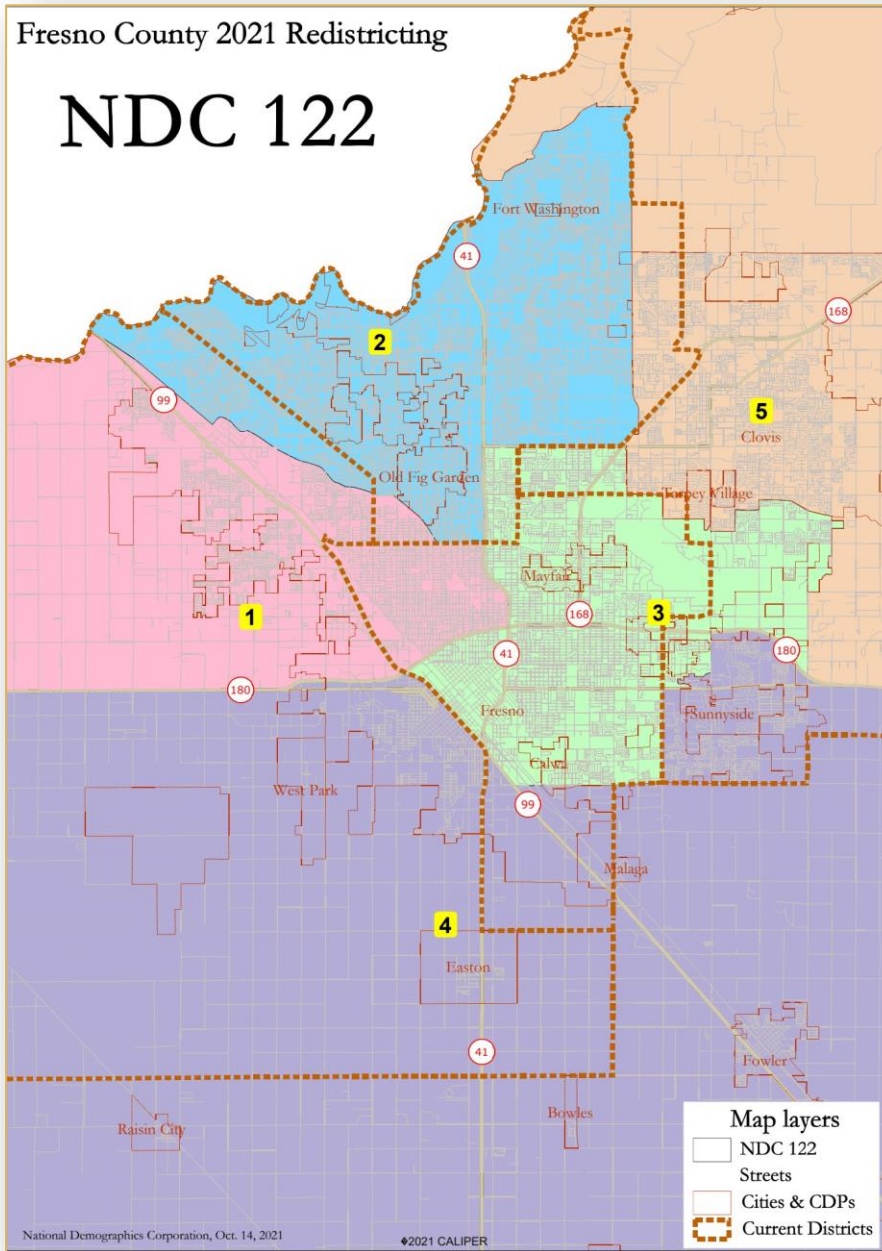
Latino voter registration and turnout data are Spanish-sumame counts adjusted using Census Population Department undercount estimates. NH White and NH Black registration and turnout counts estimated by NDC. Citizen Voting Age Pop., Age, Immigration, and other demographics from the 2015-2019 American Community Survey and



# NDC Map 122

Fresno County 2021 Redistricting

## NDC 122



Fresno County NDC 122

District	1	2	3	4	5	Total
Total Pop	201,060	202,776	200,468	200,039	204,187	1,008,530
Deviation from ideal	-646	1,070	-1,238	-1,667	2,481	4,148
% Deviation	-0.32%	0.53%	-0.61%	-0.83%	1.23%	2.06%
% Hisp	66.2%	34%	62%	67%	39%	54%
% NH White	17%	43%	14%	16%	44%	27%
% NH Black	5%	6%	6%	4%	2%	5%
% Asian-American	9%	13%	15%	11%	10%	12%
Citizen Voting Age Pop	104,173	143,637	107,446	104,121	125,670	585,047
% Hisp	54%	27%	52%	55%	31%	42%
% NH White	30%	55%	24%	27%	56%	40%
% NH Black	7%	6%	8%	5%	2%	6%
% Asian/Pac. Isl.	8%	11%	15%	11%	9%	11%
Voter Registration (Nov 2020)	86,343	123,122	83,577	90,097	120,841	503,980
% Latino est.	54%	27%	53%	54%	30%	41%
% Spanish-Surnamed	50%	25%	48%	50%	27%	38%
% Asian-Surnamed	5%	6%	4%	6%	4%	5%
% Filipino-Surnamed	1%	1%	1%	1%	1%	1%
% NH White est.	34%	62%	33%	32%	64%	48%
% NH Black	8%	5%	11%	8%	2%	6%
Voter Turnout (Nov 2020)	57,797	98,397	50,706	62,565	96,746	366,211
% Latino est.	51%	24%	50%	50%	27%	37%
% Spanish-Surnamed	47%	23%	47%	47%	25%	35%
% Asian-Surnamed	5%	5%	4%	6%	4%	5%
% Filipino-Surnamed	1%	1%	1%	1%	1%	1%
% NH White est.	36%	64%	35%	37%	67%	52%
% NH Black	7%	5%	10%	7%	2%	5%
Voter Turnout (Nov 2018)	36,856	71,045	30,902	41,858	66,968	247,629
% Latino est.	46%	21%	47%	45%	23%	33%
% Spanish-Surnamed	44%	19%	45%	43%	22%	31%
% Asian-Surnamed	4%	5%	3%	5%	3%	4%
% Filipino-Surnamed	1%	1%	1%	1%	1%	1%
% NH White est.	40%	68%	37%	41%	71%	56%
% NH Black est.	7%	5%	9%	6%	2%	5%
ACS Pop. Est.	199,582	201,489	192,310	196,058	191,832	981,270
Age						
age0-19	33%	26%	34%	33%	30%	31%
age20-60	53%	52%	52%	50%	50%	52%
age60plus	13%	21%	14%	16%	19%	17%
Immigration						
immigrants	26%	15%	24%	26%	15%	21%
naturalized	30%	58%	40%	36%	50%	41%
Language spoken at home						
english	46%	73%	44%	43%	70%	55%
spanish	46%	14%	43%	49%	21%	35%
asian-lang	4%	6%	10%	5%	5%	6%
other lang	5%	6%	2%	4%	3%	4%
Language Fluency						
Speaks Eng. "Less than Very Well"	26%	9%	23%	25%	10%	19%
Education (among those age 25+)						
hs-grad	46%	43%	47%	46%	48%	46%
bachelor	9%	23%	8%	10%	18%	14%
graduateegree	3%	14%	3%	4%	10%	7%
Child in Household						
child-under18	45%	31%	44%	46%	38%	40%
Pct of Pop. Age 16+						
employed	63%	64%	57%	59%	63%	61%
Household Income						
income 0-25k	28%	16%	37%	26%	16%	24%
income 25-50k	26%	19%	25%	25%	20%	23%
income 50-75k	18%	19%	17%	17%	15%	17%
income 75-200k	25%	38%	20%	28%	41%	31%
income 200k-plus	2%	8%	1%	3%	7%	5%
Housing Stats						
single family	73%	71%	61%	83%	84%	74%
multi-family	27%	29%	39%	17%	16%	26%
rented	53%	43%	62%	44%	34%	47%
owned	47%	57%	38%	56%	66%	53%

Total population data from the 2020 Decennial Census.

Surname-based Voter Registration and Turnout data from the California Statewide Database.

Latino voter registration and turnout data are Spanish-surname counts adjusted using Census Population Department undercount estimates. NH White and NH Black registration and turnout counts estimated by NDC. Citizen Voting Age Pop., Age, Immigration, and other demographics from the 2015-2019 American Community Survey and Special Tabulation 5-year data.

# Discussion/Action

---

As the Advisory Redistricting Commission, which map(s) will you recommend to the Fresno County Board of Supervisors for its November 2, 2021, Public Hearing regarding proposed supervisorial district boundaries?

