

A stylized outline of Fresno County, California, with a yellow-to-green gradient. The outline is positioned behind the main title text.

FRESNO COUNTY REDISTRICTING 2021

County of Fresno Redistricting Workshop

August 21, 2021

Ryder Todd Smith, President, Tripepi Smith
Jeff Tilton, Senior Consultant, National Demographics Corporation

Traducción al Español Disponible

Meeting is Being Recorded

Introductions

Today's Goals

You Learn From the Experts

Experts Listen to You

Mapping Tools Training

You Leave Empowered to Give Effective Feedback

Today's "Doubleheader" Schedule

AGENDA: 9:30-11:30 a.m.

Process, Rules and Goals

Neighborhoods/Communities of Interest

Mapping Tools

Next Steps

Redistricting Process

Step	Description
Pre-Draft Public Hearing August 12, 6:30 p.m. Health and Wellness Center	<ul style="list-style-type: none"> • Advisory Commission Public Hearing • Held prior to release of draft maps • Educate, solicit input on the communities in the Districts
Census Data Release August 12, 2021	<ul style="list-style-type: none"> • Census Bureau releases official 2020 Census population data
California Data Release Late September	<ul style="list-style-type: none"> • California Statewide Database releases California's official 'prisoner-adjusted' 2020 redistricting data
Engagement Workshops	<ul style="list-style-type: none"> • July 14, 6-8 p.m. (Riverdale Unified School District) • August 3, 6-8 p.m. (Gaston Middle School) • August 4, 6-8 p.m. (Fresno High School) • August 21, 9:30-11:30 a.m. (Woodward Park Regional Library) • August 21, 2:30-4:30 p.m. (Clovis Veterans Memorial Center) • September 29, 6-8 p.m. (via Zoom)

Dates/locations subject to change

Redistricting Process (continued)

Step	Description
Pre-Draft Public Hearing October 5, 1:15 p.m. Health and Wellness Center	<ul style="list-style-type: none"> • Advisory Commission Public Hearing • Recommend communities of interest, neighborhoods to Board of Supervisors
Pre-Draft Public Hearing October 21, 6:30 p.m. Health and Wellness Center	<ul style="list-style-type: none"> • Advisory Commission Public Hearing • Recommend communities of interest, neighborhoods to Board of Supervisors • Recommend draft maps to Board of Supervisors • Deadline to submit maps: October 20, 2021, 5 p.m.
Draft Map Public Hearing November 2, 1 p.m. Board Chambers	<ul style="list-style-type: none"> • Board of Supervisors Public Hearing • Discuss, revise the draft maps • Discuss the election sequence • Deadline for maps to be posted to website: October 27, 2021, 5 p.m.
Draft Map Public Hearing November 16, 1 p.m. Board Chambers	<ul style="list-style-type: none"> • Board of Supervisors Public Hearing • Select final map and election sequence • Deadline to submit maps: November 2, 2021, 5 p.m. • Deadline for maps to be posted to website: November 9, 2021, 5 p.m.

Dates/locations subject to change

Redistricting Rules and Goals

1. Federal Laws

- Equal Population
- Federal Voting Rights Act
- No Racial Gerrymandering



2. California Criteria for Counties

1. Geographically contiguous
2. Undivided neighborhoods and “communities of interest” (Socio-economic geographic areas that should be kept together)
3. Cities and CDPs
4. Easily identifiable boundaries
5. Compact (Do not bypass one group of people to get to a more distant group of people)

Prohibited:

“Shall not favor or discriminate against a political party.”

3. Other Traditional Redistricting Principles

- Minimize voters shifted to different election years
- Respect voters’ choices / continuity in office
- Future population growth
- Preserving the core of existing districts

Defining Neighborhoods

1st Question: What is your neighborhood?

2nd Question: What are its geographic boundaries?

Examples of physical features defining a neighborhood boundary:

- Natural neighborhood dividing lines, such as highway or major roads, rivers, canals and/or hills
- Areas around parks or schools
- Other neighborhood landmarks

In the absence of public testimony, planning records and other similar documents may provide definition.



Beyond Neighborhoods: Defining Communities of Interest

1st Question: What defines your community?

- Geographic Area, plus
- Shared issue or characteristic
 - Shared social or economic interest
 - Impacted by county policies
- Tell us “your community’s story”

2nd Question: Would this community benefit from being “included within a single district for purposes of its effective and fair representation”?

- Or would it benefit more from having multiple representatives?

Definitions of Communities of Interest may not include relationships with political parties, incumbents, or political candidates.

Possible Neighborhoods / Communities

From July 14, 2021, public workshop:

- Riverdale
- Lanare
- East of CA 41/West of CA 41
 - Type of crops; no trees
 - Size of farms and corporations
 - Family farms
 - Housing type; access to resources
- Unincorporated communities
 - Lack access to water
 - Farmworker community

Submissions edited for clarity and brevity

Possible Neighborhoods / Communities

From August 3, 2021, public workshop:

- Parlier
- Southeast Fresno (water quality)
- Parlier (sewer systems/storm water systems)
- Clovis to the foothills (east)
- West Fresno, west of 99 (new construction)
- Old West, historically recognized
- African American communities
- Sanger (infrastructure investments)
- Water services (how accessible to residents)
- Rural communities (high Latino populations)
- Foothills (remain unified w/ services)
- East vs. Urban

Submissions edited for clarity and brevity

Possible Neighborhoods / Communities

From August 4, 2021, public workshop:

- Food deserts, lack access to food quality options
- Shopping areas
- Communities without transportation
- Accessibility to jobs
- Loma Vista – existing and future growth
 - West:
 - East: McCall
- Heritage Grove
 - Willow, Sheppard, Copper
- Parlier:
 - water quality issues, access to water for low income communities, water rates going up
 - Transportation issues, traffic around school zones
 - Policy issues
- Communities centered around schools, enrollment boundaries for each of the schools

Submissions edited for clarity and brevity

Possible Neighborhoods / Communities

From August 4, 2021, public workshop (continued):

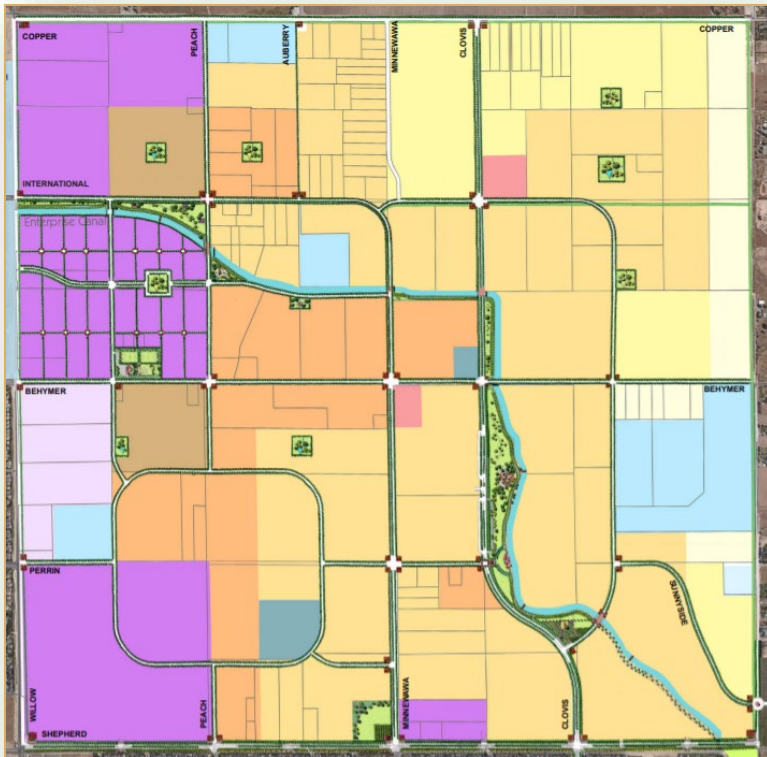
- Sunnyside
- Community Planning areas
 - Tower District
 - Southwest Fresno
- East side Fresno, Kings Canyon
- Pinedale
- Districts according to Police Departments
 - Public safety response times
 - County of Fresno as well as police within limits of City
- County Islands within city limits
- Mayfair / “Lake Don Pedro”
- Muscatel / West Central Fresno
- Central District
- Language spoken
- Historic Districts
- Historic Tracts
 - GIS data on Fresno website
- Canals, railways, freeways
 - Recognizable boundaries
- Renters, homeowners
- Historically redlined communities

Submissions edited for clarity and brevity

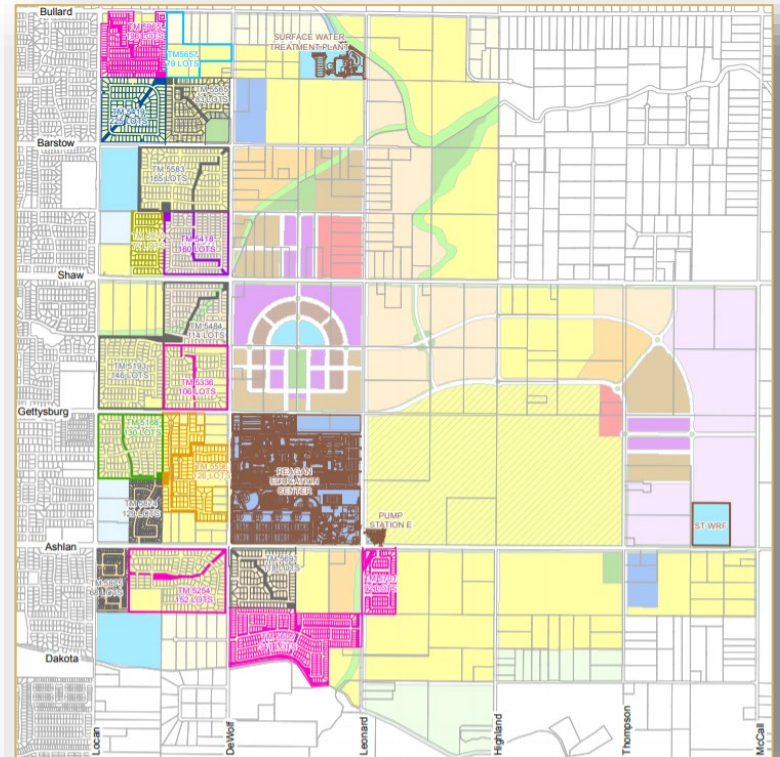
Possible Neighborhoods / Communities

Submitted via email by Daniel Brannick:

- Heritage Grove Master Plan (City of Clovis)



- Loma Vista Specific Plan (City of Clovis)

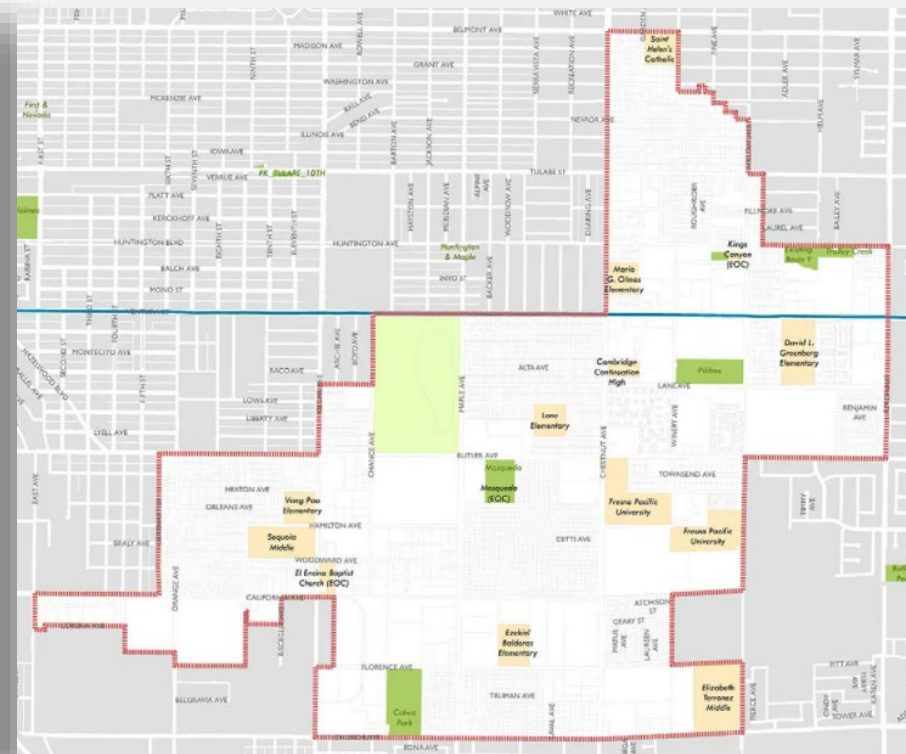
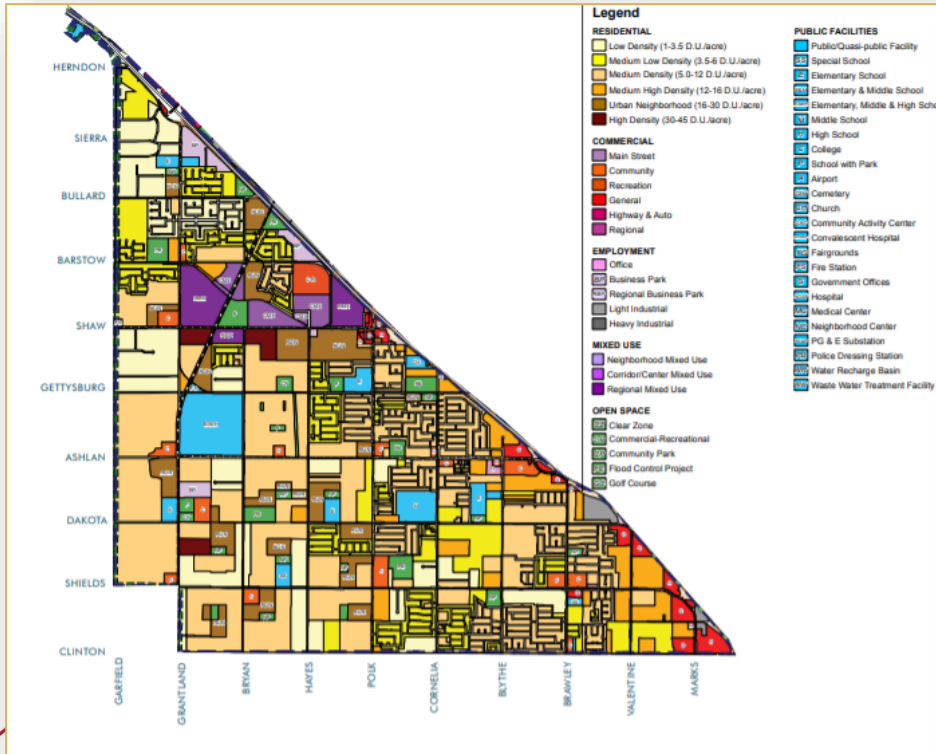


Possible Neighborhoods / Communities

Submitted via email by Daniel Brannick (continued):

➤ West Area Neighborhoods Specific Plan (City of Fresno)

➤ Central Southeast Area Specific Plan (City of Fresno)



Possible Neighborhoods / Communities

From August 21, 2021, public workshops:

- Fig Garden and Pinedale to be unified
- Unincorporated County Islands in District 2
 - Fig Garden, Fort Washington, Bullard – should not be divided amongst themselves
- West Fresno / Central Area to be unified
- 99 Freeway
- District 2 – 3 school districts
 - Clovis
 - Central
 - Fresno
- 99 divides North of Shields, strong dividing line
- Punjabi community along west side of 99

Submissions edited for clarity and brevity

Possible Neighborhoods / Communities

From August 21, 2021, public workshops (continued):

- Train Line – Chinatown, Downtown Fresno, Lower and Central
- Fresno State neighborhoods
 - Shaw, Herndan
- Cabins in Shaver / Foothills, united with today's location
 - Connected to communities in North Fresno: Fig Gardens
 - Disagreement on connecting these in resulting of diluting of voting block
- Downtown Fresno to be disconnected with South West / West Fresno – divide around City Hall / Van
- Small section of District 5 includes apartment buildings, should be in District 2 to keep students together – divided by 168
- Fig Garden Loop, currently divided by railroad, should be connected, Shaw Ave., Herndan

Submissions edited for clarity and brevity

Possible Neighborhoods / Communities

From August 21, 2021, public workshops (continued):

- Downtown Fresno, 93721, 93706, 93726
- Area around Clovis Library
- Kings Canyon corridors
 - Sanger, Clovis, Fresno Unified Districts
 - Minority owned businesses
 - 93727, new developments East
- Asian Village, Chestnut (West), Kings Canyon (South), Clovis (East)
- First & McKinley – City of Fresno, Romain Park Area
- El Dorado Park – Low-income renters area, Shaw & 6th
- West Fresno, Vang Pao Elementary
 - Elm Ave going to South, Washington Union HS District, Central Union HS
 - California and West

Submissions edited for clarity and brevity

Possible Neighborhoods / Communities

From August 21, 2021, public workshops (continued):

- South of Shaw, West of Palm, down to McKinley, West to railroad
- Areas South of McKinley, low access to internet, high child population count, non-English speakers
- Cities west of 41
- East of 41 – Calwa, Malaga
- Melody Park Area
- Summetset Apartments, across the street from FIRM
- Selma, Clovis East, Central Unified, along 99 (Hmong/Punjabi)

Submissions edited for clarity and brevity

Q&A With Your Hosts

Your Turn: Communities of Interest

- ❑ Who is a part of your community?
- ❑ What are some meaningful places your community recognizes or gathers at?
- ❑ What are some common concerns you share with a group?
- ❑ What are some common cultural characteristics that unite a community?
- ❑ What are common work-related traits that bring a community together ?
- ❑ What is significant about the physical environment?

Your thoughts and ideas will become part of the record and be recorded/written down

Share Your Thoughts

HOME COMMISSION MEETINGS REDISTRICTING RESOURCES

 FRESNO COUNTY
REDISTRICTING 2021

The County of Fresno is currently initiating the 2021 Redistricting process.

Applications for membership on the advisory commission to the Board were accepted from April 27, 2021 through May 14, 2021, and the commission was selected by the Board of Supervisors on May 25, 2021.

For more information, please contact FresnoCounty2021Redistricting@fresnocountyca.gov.

Website: www.co.fresno.ca.us/resources/redistricting

Phone: 559.600.1221 | **Email:** FresnoCounty2021Redistricting@fresnocountyca.gov

Public Mapping and Map Review Tools

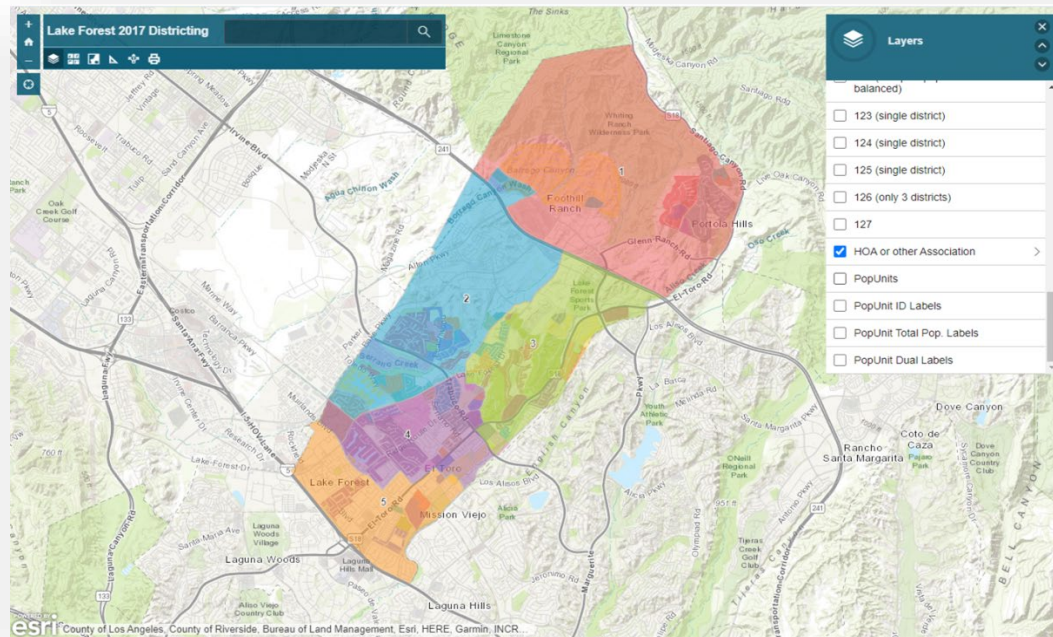
- **Different tools for different purposes**
- **Different tools for different levels of technical skill and interest**
 - Simple “review draft maps” tool
 - Easy-to-use “Draw your neighborhood” tool
 - Paper- and Excel-based simple “Draw a draft map” tools
 - Powerful, data-rich “Draw a draft map” tool

Whether you use the powerful (but complicated) online mapping tool, Excel, the paper kit, or just draw on a napkin, we welcome your maps!

Simple Map Review Tool

Online Interactive Review Map

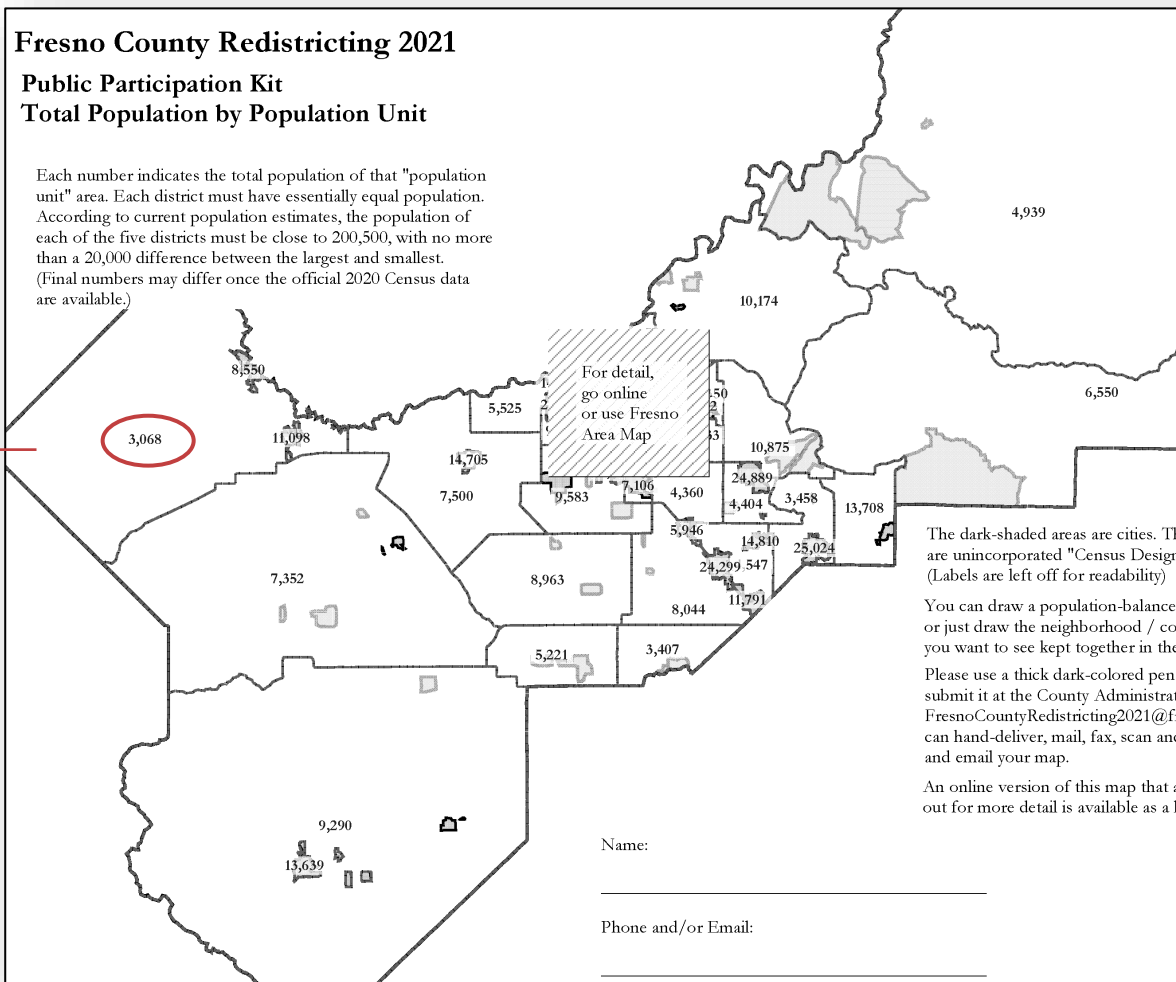
- ESRI's "ArcGIS Online" – similar to Google Maps in ease of use
- Used to review, analyze and compare maps, not to create them
- Includes overlays of "community of interest" and other Story Map data
- [Sample map from Lake Forest](#)



Simple Map Drawing Tool

Paper “Public Participation Kit”

- For those without internet access or who prefer paper
- Total Population Counts only – no demographic numbers
- Geographic units would be tracts, CDP’s and smaller cities



Simple Map Drawing Tool + Excel Supplement

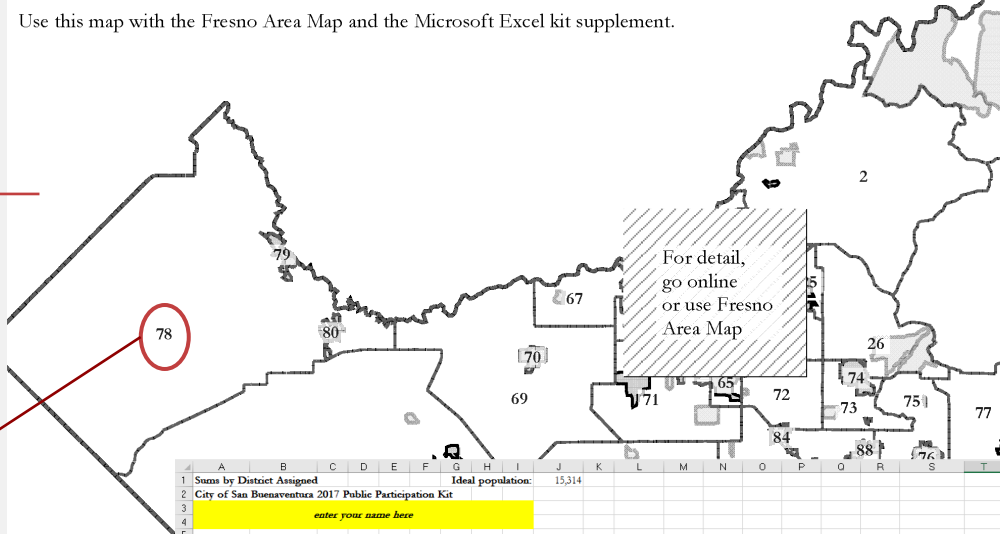
“Public Participation Kit”

- For those who know Excel and do not wish to use online tools
- Adds CVAP data
- Excel does the math
- Geographic units would be tracts, CDP’s and smaller cities

Fresno County Redistricting 2021

Public Participation Kit Population Unit ID Numbers

Use this map with the Fresno Area Map and the Microsoft Excel kit supplement.



AutoSave On Lake Forest 5-district Kit_ENG.xlsx

File Home Insert Page Layout Formulas Data Review View Help Acrobat

Clipboard Font Alignment Number

Distict	Unit	Tot. Pop.	Hisp	Whit	Blk	NH	Asn	total	Hisp	Whit	Blk	Asn	tot	Hisp	Whit	Blk	Asn	tot	latino	asn	fil	tot
1	1	1,216	642	557	18	15	873	397	442	12	831	390	441	0	574	195	7	3	245	63		
2	2	2,367	1,128	1,055	43	96	1,784	741	899	74	1,915	730	1,140	0	45	1,299	435	14	7	555	140	
3	3	1,643	768	278	42	25	1,036	741	236	15	400	235	145	0	20	505	286	3	4	161	73	
4	4	1,768	734	855	62	84	1,272	464	685	62	1,231	461	639	19	111	1,022	366	11	11	391	89	
5	5	2,001	209	1,655	14	79	1,639	144	1,392	64	1,511	88	1,337	12	38	1,776	146	46	7	1,089	67	
6	6	612	56	499	4	39	517	37	440	26	471	22	423	3	15	525	38	15	2	337	18	
7	7	1,753	1,180	501	70	10	1,945	767	494	10	780	335	440	0	797	398	7	4	241	70		

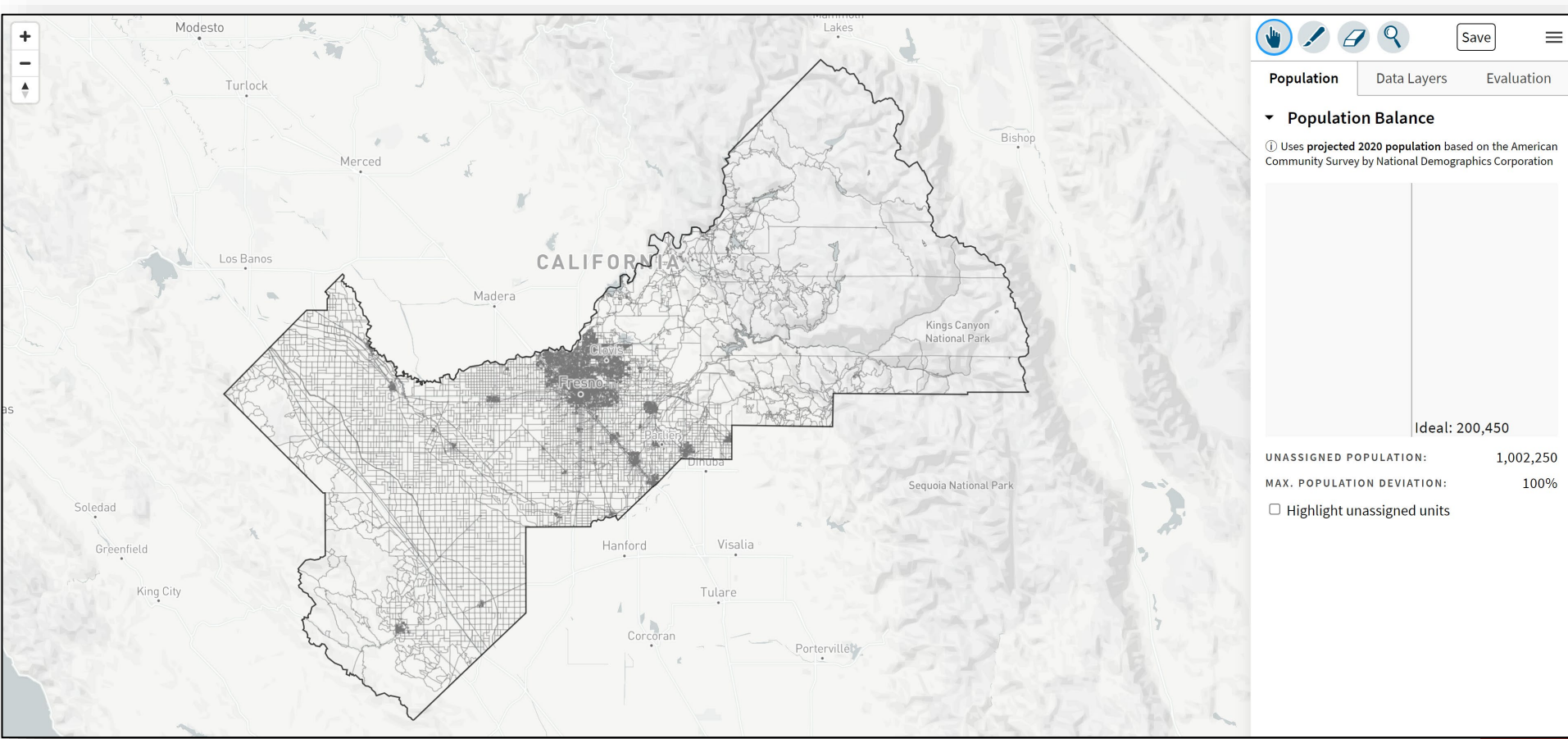
Group	Category	1	2	3	4	5	6	7	Unassigned	Total	1	2	3	4	5	6	7	Unassigned	Total
Total Population	Tot. Pop.	0	0	0	0	0	0	0	107,197	107,197	-100%	-100%	-100%	-100%	-100%	-100%	-100%		0.00%
Total CVAP	Total CVAP	0	0	0	0	0	0	0	83,090	83,090	#DIV/0!	#DIV/0!	#DIV/0!	#DIV/0!	#DIV/0!	#DIV/0!	#DIV/0!		28%
Total Reg.	Total Reg.	0	0	0	0	0	0	0	13,374	13,374	#DIV/0!	#DIV/0!	#DIV/0!	#DIV/0!	#DIV/0!	#DIV/0!	#DIV/0!		11%

Submitter's Comments about the plan:
Think this map makes sense because...

DistrictR

“Draw Your Community of Interest” focus

- districtR.org/tag/Fresno
- Also includes simple district-mapping tool; Only available in English
- Similar external options: [Representable.org](https://representable.org), [DrawMyCACommunity.org](https://drawmycacomunity.org)



Caliper's "Maptitude Online Redistricting"

Full Database, Powerful Online Mapping Tool

- <https://inzolia.caliper.com/FresnoCounty/Default.aspx>
- Powerful, common, data-rich online tool
- Six language options: English, Spanish, Portuguese, Vietnamese, Mandarin and Korean

The screenshot displays the Maptitude Online Redistricting interface. The central map shows Fresno County with various redistricting boundaries in red, green, and yellow. A toolbar at the top left includes icons for zooming, panning, and information. On the left side, there are vertical menus for "Options" and "Districts". On the right side, there is a "Toolbox" panel with the following settings:

- Target: New District
- Source: All
- Selection: Block

Below the toolbox is a "Changes" panel with a table of pending changes:

Pending Changes	
District	New
Est_Population	0
Change - Est_Population	0
Ideal Value	200,455
Deviation	-200,455
% Deviation	-100.0%
CVAP_Total	0
Change - CVAP_Total	0
CVAP_Latino	0
Change - CVAP_Latino	0
% CVAP_Latino	

At the bottom left, the scale is indicated as 1 : 1,266,526. At the bottom right, the text "Maptitude Online Redistricting" is visible.

Share Your Thoughts

HOME COMMISSION MEETINGS REDISTRICTING RESOURCES

 FRESNO COUNTY
REDISTRICTING 2021

The County of Fresno is currently initiating the 2021 Redistricting process.

Applications for membership on the advisory commission to the Board were accepted from April 27, 2021 through May 14, 2021, and the commission was selected by the Board of Supervisors on May 25, 2021.

For more information, please contact FresnoCounty2021Redistricting@fresnocountyca.gov.

Website: www.co.fresno.ca.us/resources/redistricting

Phone: 559.600.1221 | **Email:** FresnoCounty2021Redistricting@fresnocountyca.gov