



# FRESNO COUNTY **REDISTRICTING 2021**

## County of Fresno Redistricting Draft Maps

November 2, 2021

Kristen Parks, Consultant  
National Demographics Corporation

# Redistricting Process

---

Step	Description
<b>Pre-Draft Public Hearing</b> August 12, 2021	<ul style="list-style-type: none"> <li>• Advisory Commission Public Hearing; held prior to release of draft maps</li> <li>• Educate, solicit input on the communities in the Districts</li> </ul>
<b>Census Data Releases</b>	<ul style="list-style-type: none"> <li>• Census Bureau releases official 2020 Census population data – Aug. 12</li> <li>• California’s official ‘prisoner-adjusted’ 2020 redistricting data – Sept. 20, 27</li> </ul>
<b>Engagement Workshops</b>	<ul style="list-style-type: none"> <li>• July 14; August 3, 4, 21 (x2); and, September 29</li> </ul>
<b>Pre-Draft Public Hearing</b> October 5, 2021	<ul style="list-style-type: none"> <li>• Advisory Commission Public Hearing; held prior to release of draft maps</li> <li>• Educate, solicit input on the communities in the Districts</li> </ul>
<b>Pre-Draft Public Hearing</b> October 21, 2021	<ul style="list-style-type: none"> <li>• Advisory Commission Public Hearing</li> <li>• Recommend draft maps to Board of Supervisors</li> </ul>
<b>Draft Map Public Hearing</b> November 2, 2021	<ul style="list-style-type: none"> <li>• Board of Supervisors Public Hearing in the Board Chambers</li> <li>• Discuss, revise the draft maps (if desired), select finalist(s)</li> </ul>
<b>Draft Map Public Hearing</b> November 16, 2021 <i>1 p.m.</i>	<ul style="list-style-type: none"> <li>• Board of Supervisors Public Hearing in the Board Chambers</li> <li>• Select final map and election sequence</li> <li>• Deadline for maps to be posted to website: November 9, 2021, 5 p.m.</li> </ul>

# Redistricting Rules and Goals

## 1. Federal Laws

- Equal Population
- Federal Voting Rights Act
- No Racial Gerrymandering



## 2. California Criteria for Counties

1. Geographically contiguous
2. Undivided neighborhoods and “communities of interest” (Socio-economic geographic areas that should be kept together)
3. Cities and CDPs
4. Easily identifiable boundaries
5. Compact (Do not bypass one group of people to get to a more distant group of people)

### Prohibited:

“Shall not favor or discriminate against a political party.”

## 3. Other Traditional Redistricting Principles

- Minimize voters shifted to different election years
- Respect voters’ choices / continuity in office
- Future population growth
- Preserving the core of existing districts

# 2020 Census Data

## Fresno County - Current Districts

District		1	2	3	4	5	Total
	Total Pop	205,264	199,107	188,307	185,990	229,862	1,008,530
	Deviation from ideal	3,558	-2,599	-13,399	-15,716	28,156	43,872
	% Deviation	1.76%	-1.29%	-6.64%	-7.79%	13.96%	21.75%
Total Pop	% Hisp	62.5%	34%	66%	77%	34%	54%
	% NH White	16%	45%	13%	16%	41%	27%
	% NH Black	8%	6%	7%	1%	4%	5%
	% Asian-American	12%	12%	12%	4%	17%	12%
Citizen Voting Age Pop	Total	104,729	142,491	100,997	94,210	142,620	585,047
	% Hisp	51%	27%	55%	64%	28%	42%
	% NH White	26%	57%	23%	28%	53%	40%
	% NH Black	11%	5%	8%	1%	4%	6%
	% Asian/Pac. Isl.	10%	10%	12%	5%	14%	11%

# Neighborhoods/Communities of Interest

---

## *Neighborhoods*

1. **What is your neighborhood?**
2. **What are its geographic boundaries?**

*In the absence of public testimony, planning records and other similar documents may provide definition.*

## *Communities of Interest*

1. **What defines your community?**
2. **Would this community benefit from being “included within a single district for purposes of its effective and fair representation”?**

*Communities of Interest may not include relationships with political parties, incumbents, or political candidates.*

Submissions were edited for clarity and brevity

- 1st/McKinley
- 93608
- 93711
- 93727
- African American communities
- Asian Village: Chestnut (West), Kings Canyon (South), Clovis (East)
- Baroda
- Biola
- Blackstone Corridor
- Buchanan
- Buchanan High area
- Bullard Community Plan area
- Calwa
- Cantua Creek
- Caruthers
- Center of Fresno
- Central District
- Central Fresno
- Central Fresno/North Fresno
- Central Southeast Area Specific Plan
- Central Unified
- Chinatown
- Clovis
- Clovis East
- Clovis High area
- Clovis Library
- Clovis North High area
- Clovis to the foothills (east)
- Clovis Unified
- Clovis West
- Clovis West High area
- Coalinga
- Communities with a Community Plan
- County Islands within city limits
- County Service Areas (CSAs)
- Cultural Arts District
- Del Rey (Southeast Fresno)
- District 2 as is
- Districts according to Police Departments
- Downtown Fresno
- Downtown Fresno, 93721, 93706, 93726
- East of CA 41
- East of CA 99
- East side Fresno, Kings Canyon
- East vs. Urban
- Easton
- El Dorado Park
- El Porvenir
- European Quarter (Willow and Shepherd in Clovis)
- Farmworking community, Cedar and Butler
- Fig Garden
- Fig Garden and Pinedale
- Fig Garden Loop
- Fig Garden, Fort Washington, Bullard
- Firebaugh
- First & McKinley – City of Fresno, Romain Park Area
- Five Points
- Foothill and mountain areas
- Foothills
- Fowler
- Fresno
- Fresno County Rural Transit’s Westside routes
- Fresno State neighborhoods
- Fresno Unified
- Friant
- Heritage Grove
- Herndon
- Highway City
- Historic Districts
- Hoover Community Plan area
- Hoover High area
- Huntington Boulevard
- Huron
- Jane Addams neighborhood (“Addams”)
- Jefferson neighborhood
- Jensen and Elm
- Kerman
- Kings Canyon corridors
- Kingsburg
- Lanare
- Laton
- Lawless Elementary neighborhood
- Loma Vista
- Lowell-Jefferson Neighborhood
- Malaga
- Mayfair (“Lake Don Pedro”)
- Melody Park Area
- Mendota
- Minkler and Centerville
- Muscatel/West Central Fresno
- North Central Fresno
- North Clovis
- North Fresno
- North Fresno, separate from Clovis
- North of Shields
- North Redlands
- Northeast Fresno
- Northwest Fresno
- Old Fig Garden
- Old Fig Garden and Van Ness
- Old West
- Orange Cove
- Parlier
- Pinedale
- Punjabi community west side of 99
- Raisin City
- Reedley
- Riverdale
- Rural communities
- San Joaquin
- Sanger
- Sanger Unified
- School attendance boundaries
- School District: Central
- School District: Clovis
- School District: Fresno
- Selma
- Selma-Kingsburg-Fowler-County-Sanitation-District
- Shaver/Foothills
- South Central Specific Plan Area (“Industrial Triangle”)
- South County
- South Tower
- Southeast Fresno
- Southeast Regional Disposal Site (SERDS)
- Southwest Fresno
- Southwest Fresno (Westside)
- Southwest Fresno Specific Plan
- Summerset Apartments
- Sunnyside
- Sunnyside, Kings Canyon, Olive Street
- Tarpey Village in Clovis
- Tombstone
- Tower District
- Train Line: Chinatown, Downtown Fresno, Lower and Central
- Tranquility
- Unincorporated rural communities
- Van Ness Extension (Sierra Sky Park, SJ River Bluffs)
- Water Works Districts (WWDs)
- West Area Neighborhoods Specific Plan
- West County
- West Fresno
- West Fresno, Vang Pao Elementary
- West Fresno, west of 99
- West Fresno/Central Area
- West Hills Community College District
- West of CA 41
- West of CA 99
- West of Fresno
- West of Fresno State
- West Park
- Westlands Water District
- Westside
- Woodpark Community Plan area
- Woodward Lake/Fort Washington
- Woodward Park

# Advisory Redistricting Commission Maps

---

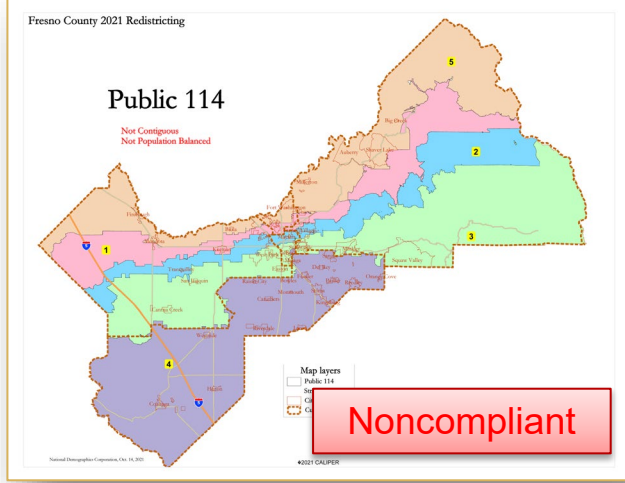
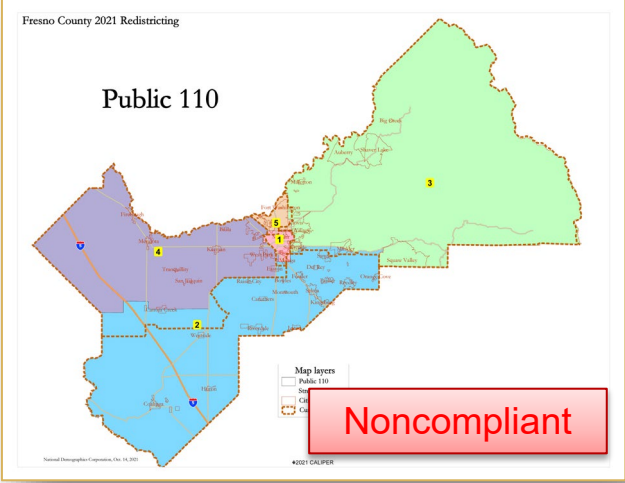
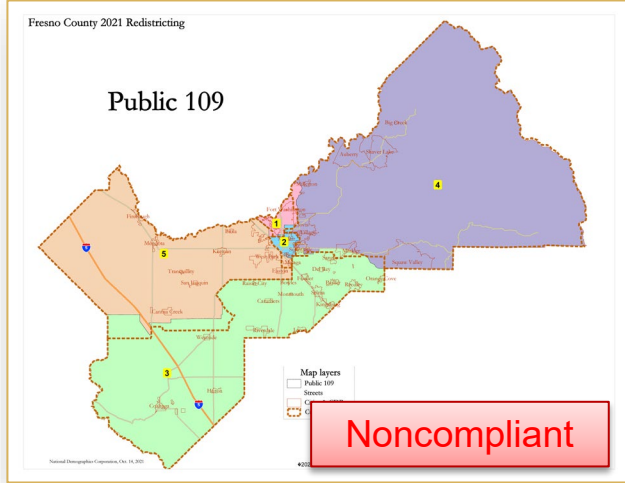
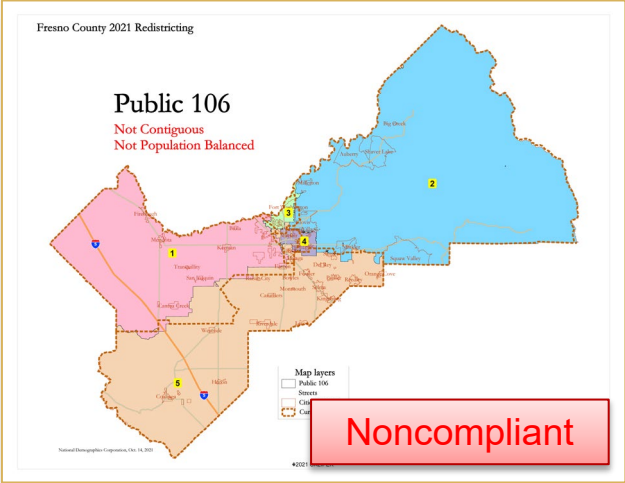
## ARC Public Hearing

October 21, 2021

- **ARC drafts maps: 23\***
- **ARC noncompliant: 4**
- **ARC recommended: 3**

*\* One revised draft map submitted and accepted at the October 21 ARC Public Hearing*

# ARC Noncompliant Public Maps: 106, 109, 110, 114

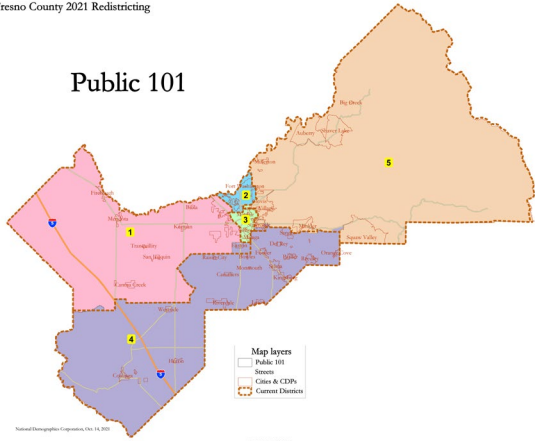




# ARC Compliant Public Maps: 101, 102, 103, 104, 105, 107

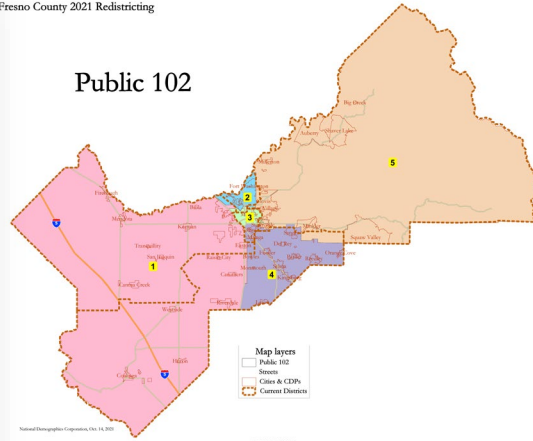
Fresno County 2021 Redistricting

## Public 101



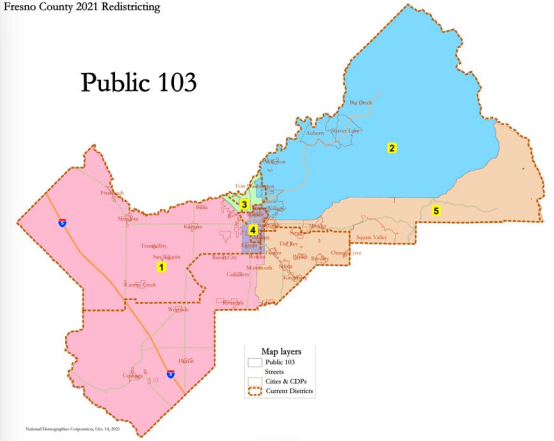
Fresno County 2021 Redistricting

## Public 102



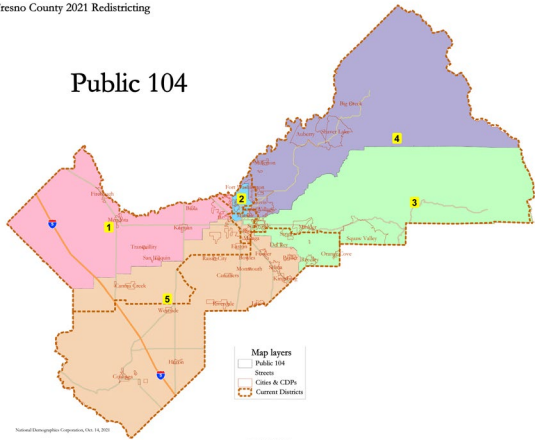
Fresno County 2021 Redistricting

## Public 103



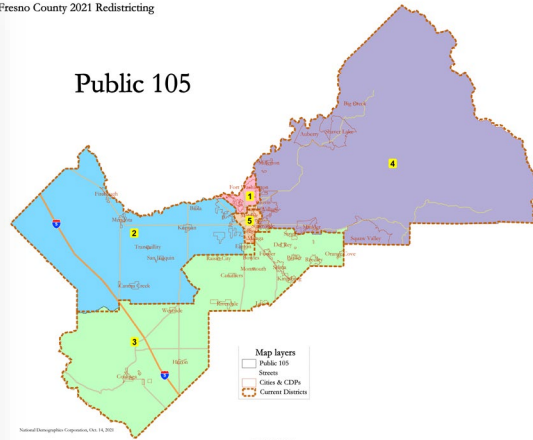
Fresno County 2021 Redistricting

## Public 104



Fresno County 2021 Redistricting

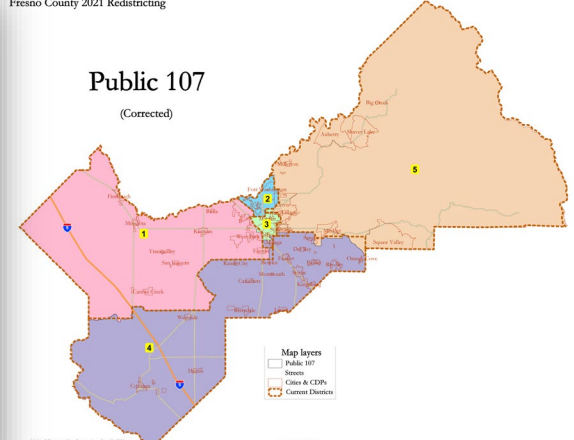
## Public 105



Fresno County 2021 Redistricting

## Public 107

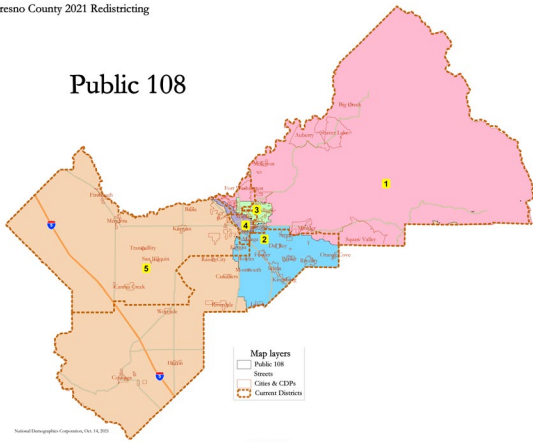
(Corrected)



# ARC Compliant Public Maps: 108, 111, 112, 113, 115, 116

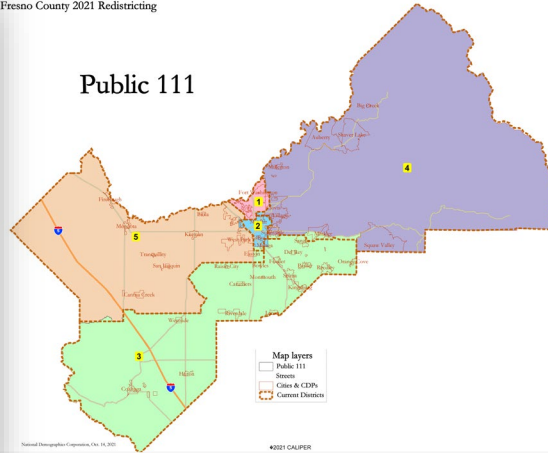
Fresno County 2021 Redistricting

## Public 108



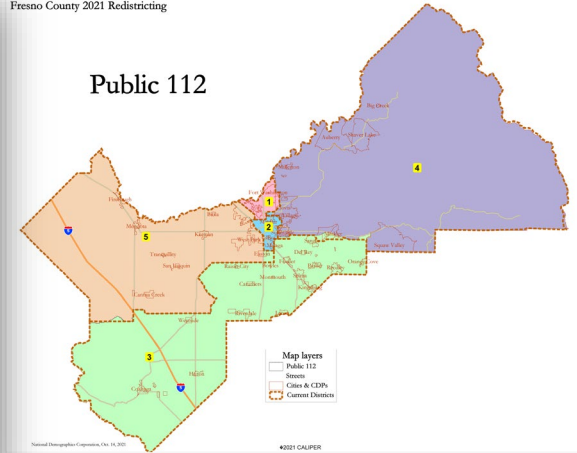
Fresno County 2021 Redistricting

## Public 111



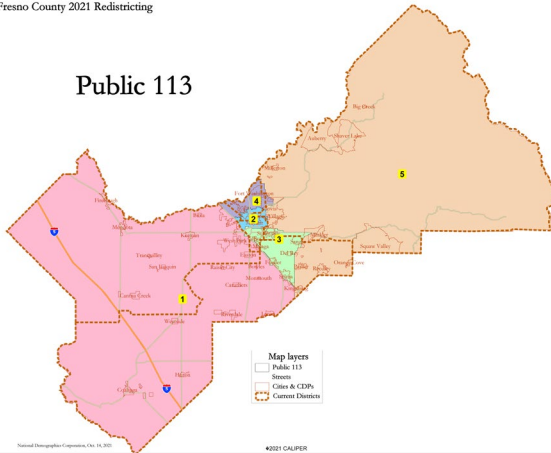
Fresno County 2021 Redistricting

## Public 112



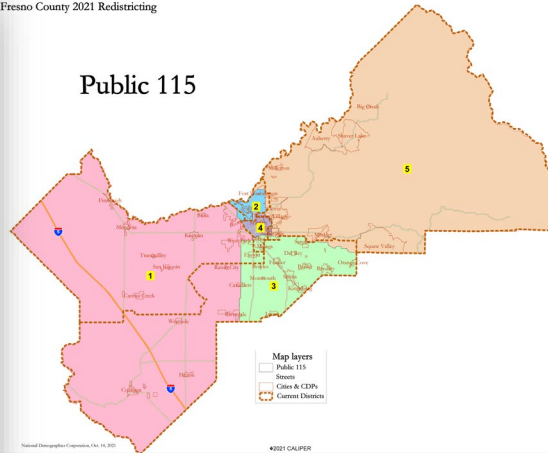
Fresno County 2021 Redistricting

## Public 113



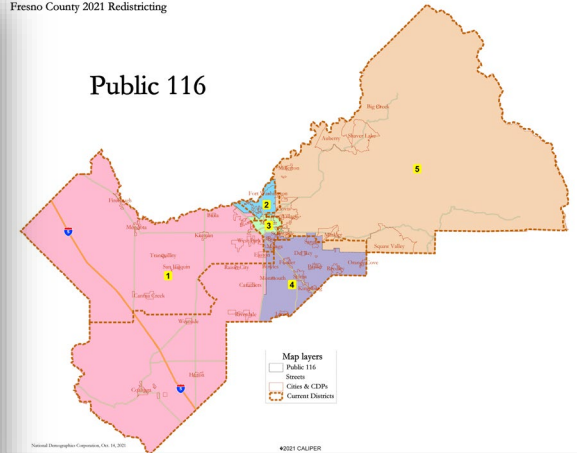
Fresno County 2021 Redistricting

## Public 115

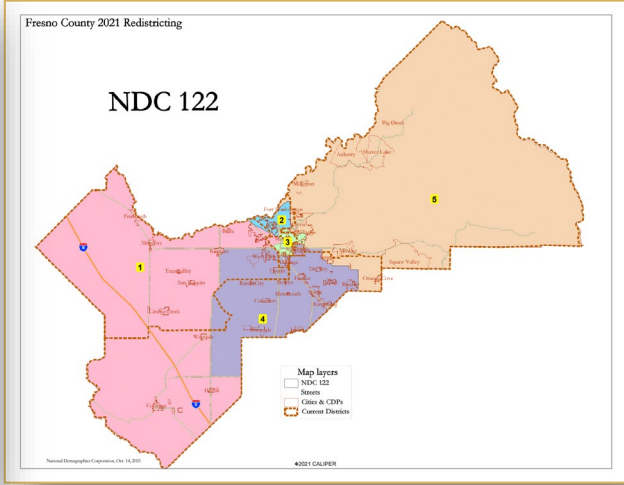
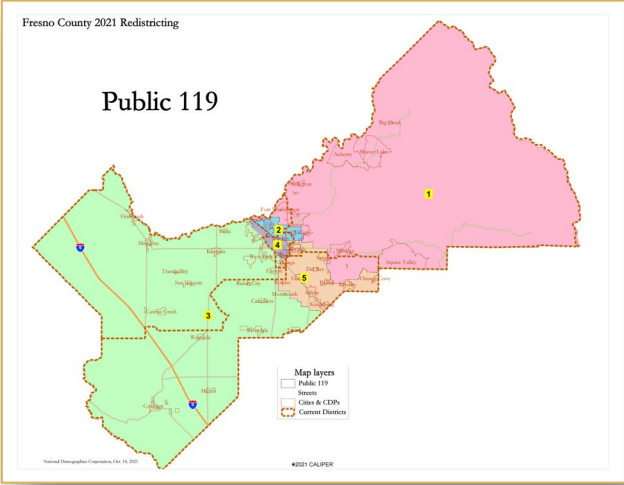
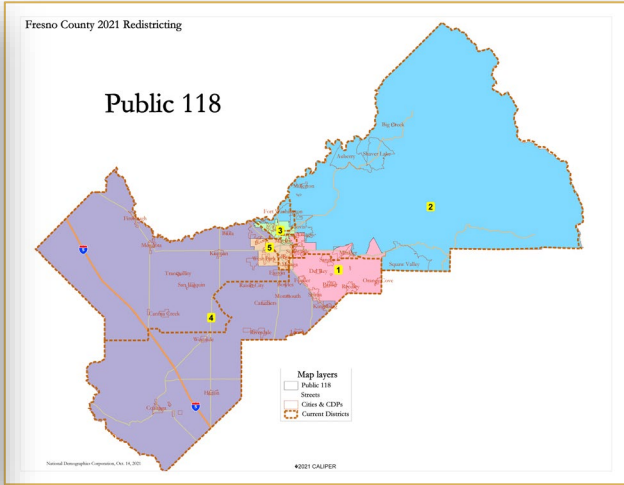
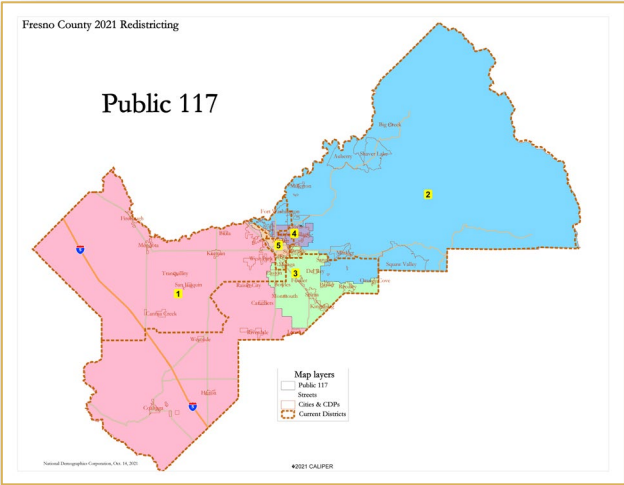


Fresno County 2021 Redistricting

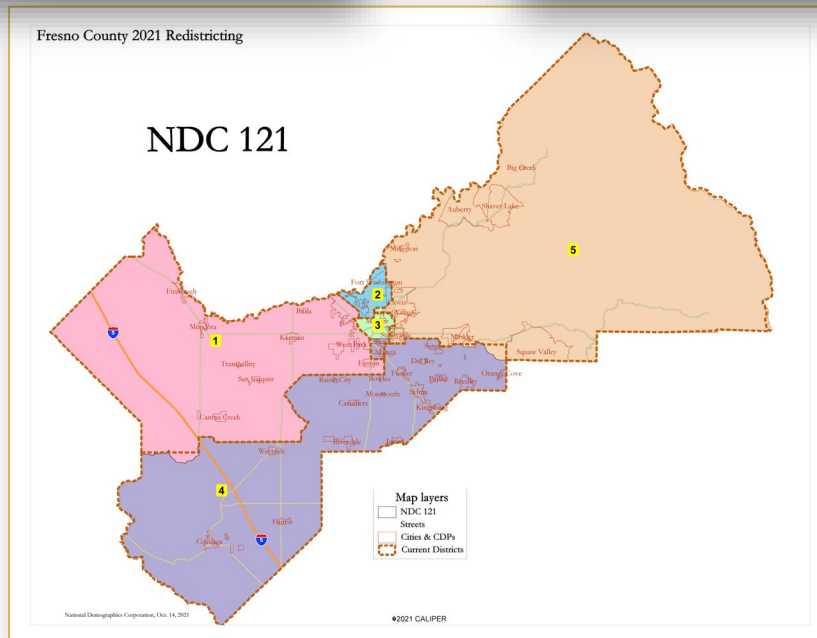
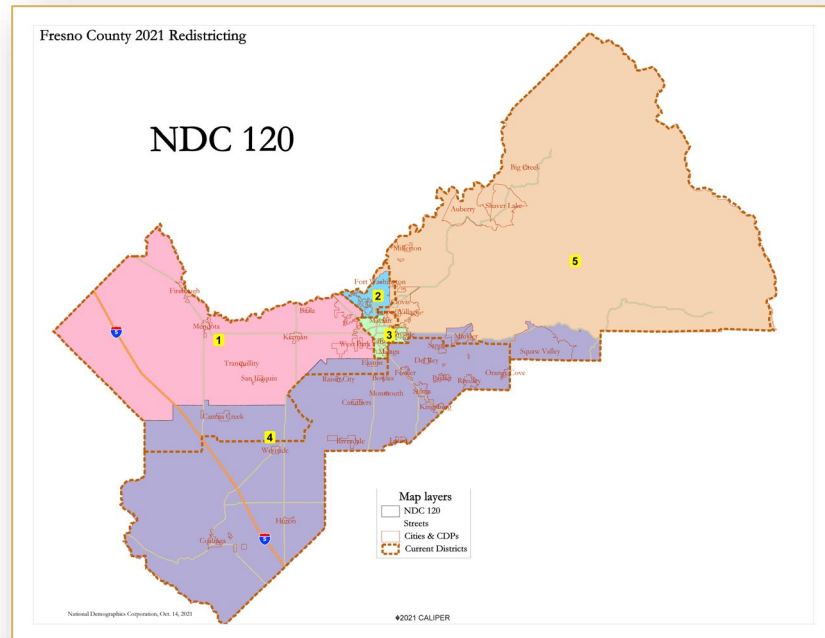
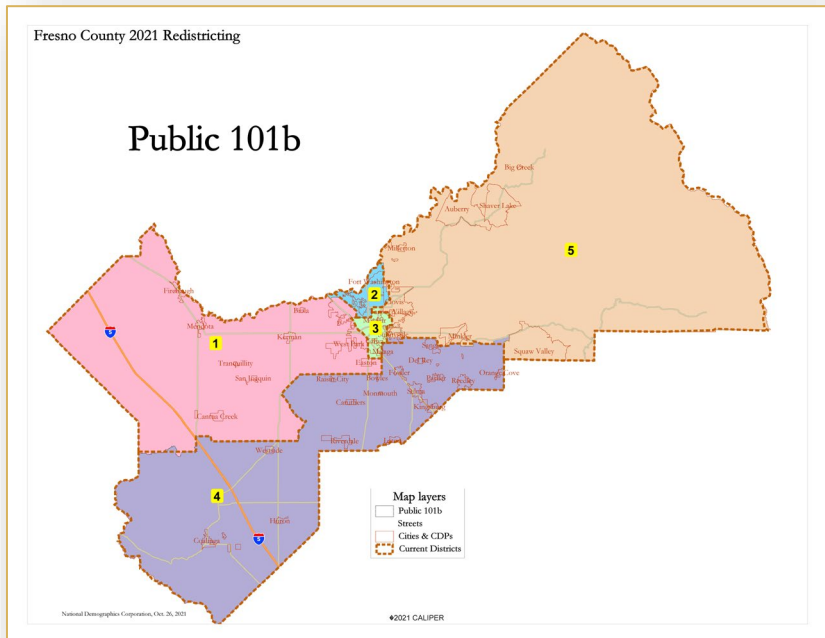
## Public 116



# ARC Compliant Public/NDC Maps: 117, 118, 119, 122



# ARC Recommended Public/NDC Maps: 101b, 120, 121



# Board of Supervisors Maps

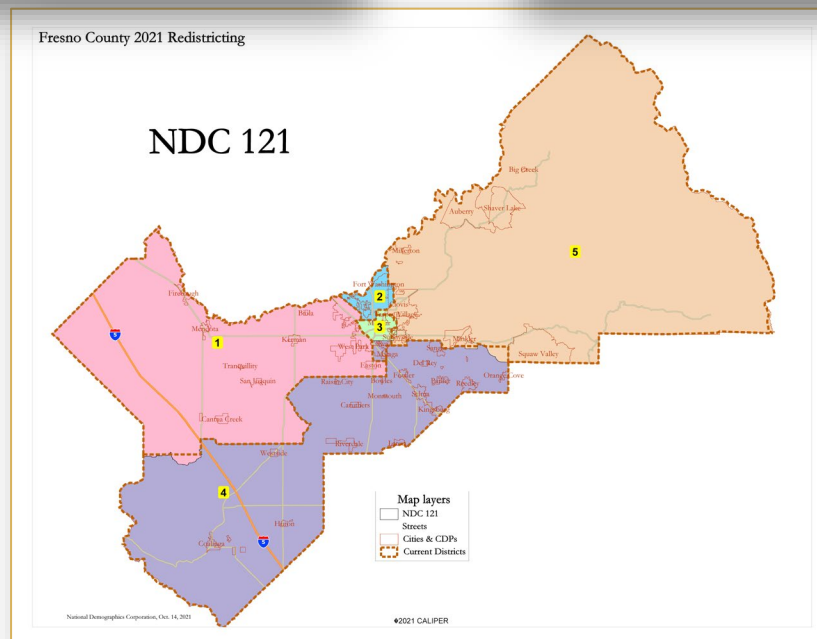
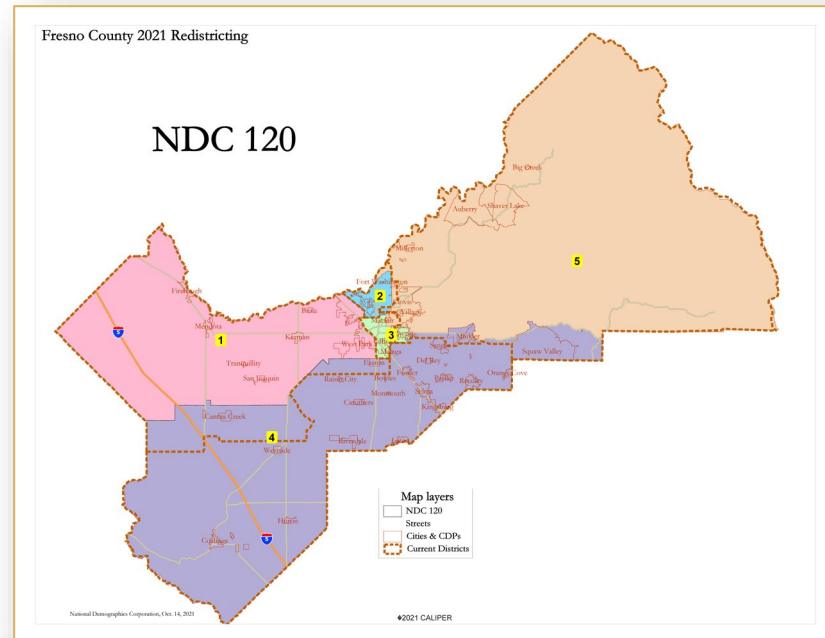
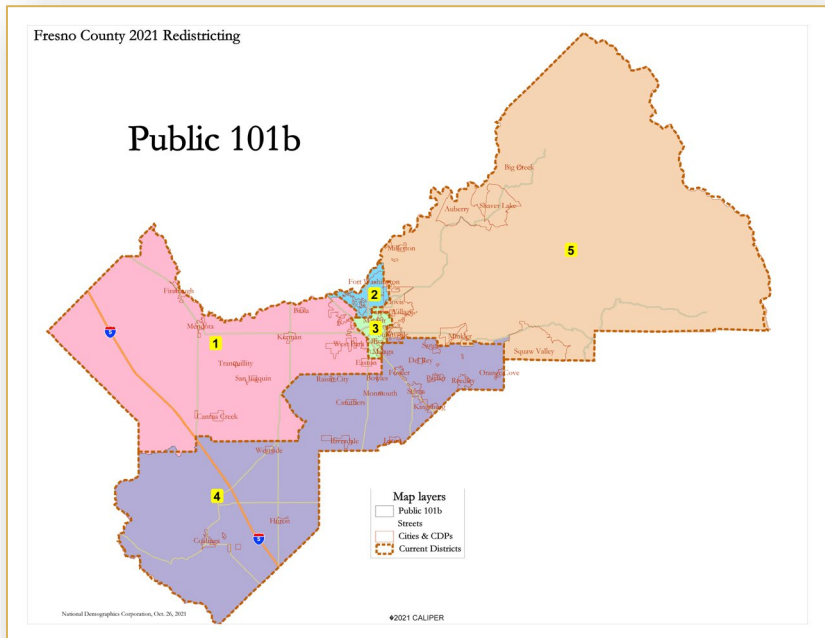
---

## Board of Supervisors Public Hearing

November 2, 2021

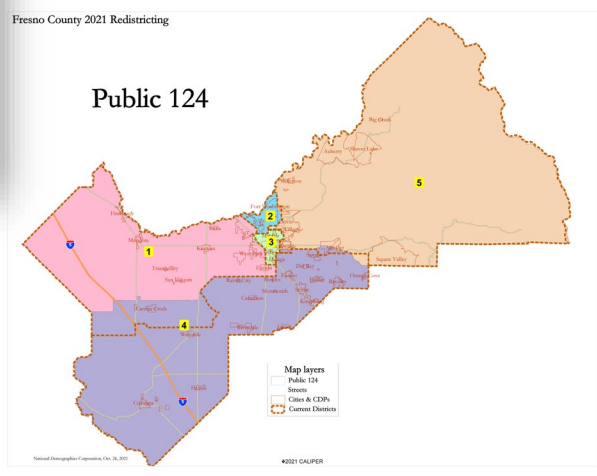
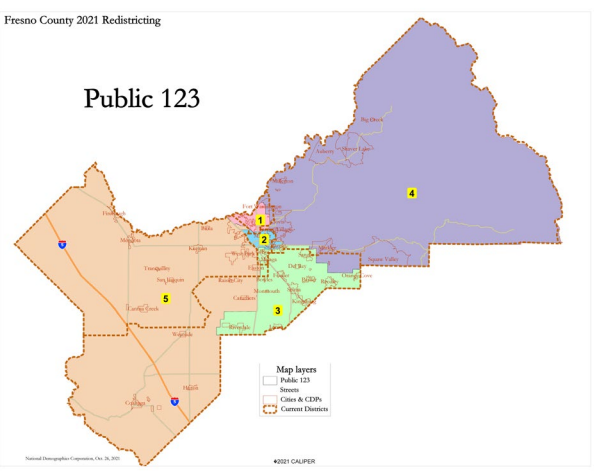
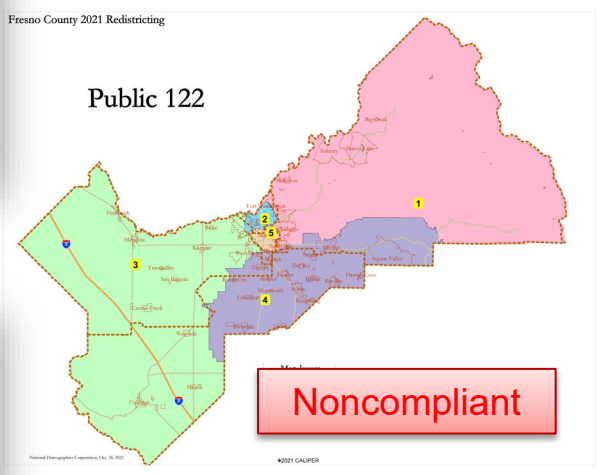
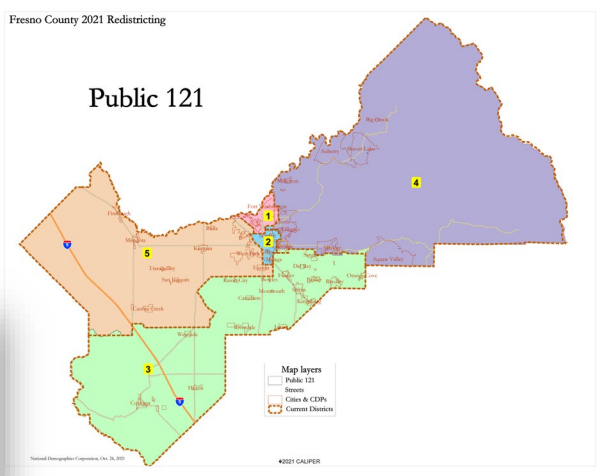
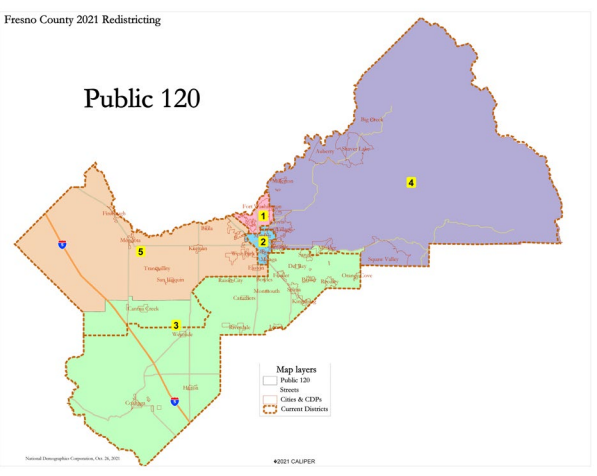
- **ARC recommended maps: 3**
- **Post-ARC drafts maps: 5**
- **Post-Arc compliant maps: 4**
- **Post-ARC noncompliant maps: 1**

# ARC Recommended Public/NDC Maps: 101b, 120, 121





# Post-ARC Public Maps: 120, 121, 122, 123, 124



# Discussion/Action

---

