



FRESNO COUNTY
REDISTRICTING 2021

County of Fresno
Redistricting Draft Maps

November 16, 2021

Dr. Jeff Tilton, Senior Consultant
National Demographics Corporation

Redistricting Process

Step	Description
Pre-Draft Public Hearing August 12, 2021	<ul style="list-style-type: none"> • Advisory Commission Public Hearing; held prior to release of draft maps • Educate, solicit input on the communities in the Districts
Census Data Releases	<ul style="list-style-type: none"> • Census Bureau releases official 2020 Census population data – Aug. 12 • California’s official ‘prisoner-adjusted’ 2020 redistricting data – Sept. 20, 27
Engagement Workshops	<ul style="list-style-type: none"> • July 14; August 3, 4, 21 (x2); and, September 29
Pre-Draft Public Hearing October 5, 2021	<ul style="list-style-type: none"> • Advisory Commission Public Hearing; held prior to release of draft maps • Educate, solicit input on the communities in the Districts
Pre-Draft Public Hearing October 21, 2021	<ul style="list-style-type: none"> • Advisory Commission Public Hearing • Recommend draft maps to Board of Supervisors
Draft Map Public Hearing November 2, 2021	<ul style="list-style-type: none"> • Board of Supervisors Public Hearing in the Board Chambers • Discuss, revise the draft maps (if desired), select finalist(s)
Draft Map Public Hearing November 16, 2021	<ul style="list-style-type: none"> • Board of Supervisors Public Hearing in the Board Chambers • Select final map and election sequence

Redistricting Rules and Goals

1. Federal Laws

- Equal Population
- Federal Voting Rights Act
- No Racial Gerrymandering



2. California Criteria for Counties

1. Geographically contiguous
2. Undivided neighborhoods and “communities of interest” (Socio-economic geographic areas that should be kept together)
3. Cities and CDPs
4. Easily identifiable boundaries
5. Compact (Do not bypass one group of people to get to a more distant group of people)

Prohibited:

“Shall not favor or discriminate against a political party.”

3. Other Traditional Redistricting Principles

- Minimize voters shifted to different election years
- Respect voters’ choices / continuity in office
- Future population growth
- Preserving the core of existing districts

2020 Census Data

Fresno County - Current Districts

District		1	2	3	4	5	Total
	Total Pop	205,264	199,107	188,307	185,990	229,862	1,008,530
	Deviation from ideal	3,558	-2,599	-13,399	-15,716	28,156	43,872
	% Deviation	1.76%	-1.29%	-6.64%	-7.79%	13.96%	21.75%
Total Pop	% Hisp	62.5%	34%	66%	77%	34%	54%
	% NH White	16%	45%	13%	16%	41%	27%
	% NH Black	8%	6%	7%	1%	4%	5%
	% Asian-American	12%	12%	12%	4%	17%	12%
Citizen Voting Age Pop	Total	104,729	142,491	100,997	94,210	142,620	585,047
	% Hisp	51%	27%	55%	64%	28%	42%
	% NH White	26%	57%	23%	28%	53%	40%
	% NH Black	11%	5%	8%	1%	4%	6%
	% Asian/Pac. Isl.	10%	10%	12%	5%	14%	11%

Neighborhoods/Communities of Interest

Neighborhoods

1. **What is your neighborhood?**
2. **What are its geographic boundaries?**

In the absence of public testimony, planning records and other similar documents may provide definition.

Communities of Interest

1. **What defines your community?**
2. **Would this community benefit from being “included within a single district for purposes of its effective and fair representation”?**

Communities of Interest may not include relationships with political parties, incumbents, or political candidates.

Submissions were edited for clarity and brevity

- 1st/McKinley
- 93608
- 93711
- 93727
- African American communities
- Asian Village: Chestnut (West), Kings Canyon (South), Clovis (East)
- Baroda
- Biola
- Blackstone Corridor
- Buchanan
- Buchanan High area
- Bullard Community Plan area
- Calwa
- Cantua Creek
- Caruthers
- Center of Fresno
- Central District
- Central Fresno
- Central Fresno/North Fresno
- Central Southeast Area Specific Plan
- Central Unified
- Chinatown
- Clovis
- Clovis East
- Clovis High area
- Clovis Library
- Clovis North High area
- Clovis to the foothills (east)
- Clovis Unified
- Clovis West
- Clovis West High area
- Coalinga
- Communities with a Community Plan
- County Islands within city limits
- County Service Areas (CSAs)
- Cultural Arts District
- Del Rey (Southeast Fresno)
- District 2 as is
- Districts according to Police Departments
- Downtown Fresno
- Downtown Fresno, 93721, 93706, 93726
- East of CA 41
- East of CA 99
- East side Fresno, Kings Canyon
- East vs. Urban
- Easton
- El Dorado Park
- El Porvenir
- European Quarter (Willow and Shepherd in Clovis)
- Farmworking community, Cedar and Butler
- Fig Garden
- Fig Garden and Pinedale
- Fig Garden Loop
- Fig Garden, Fort Washington, Bullard
- Firebaugh
- First & McKinley – City of Fresno, Romain Park Area
- Five Points
- Foothill and mountain areas
- Foothills
- Fowler
- Fresno
- Fresno County Rural Transit’s Westside routes
- Fresno State neighborhoods
- Fresno Unified
- Friant
- Heritage Grove
- Herndon
- Highway City
- Historic Districts
- Hoover Community Plan area
- Hoover High area
- Huntington Boulevard
- Huron
- Jane Addams neighborhood (“Addams”)
- Jefferson neighborhood
- Jensen and Elm
- Kerman
- Kings Canyon corridors
- Kingsburg
- Lanare
- Laton
- Lawless Elementary neighborhood
- Loma Vista
- Lowell-Jefferson Neighborhood
- Malaga
- Mayfair (“Lake Don Pedro”)
- Melody Park Area
- Mendota
- Minkler and Centerville
- Muscatel/West Central Fresno
- North Central Fresno
- North Clovis
- North Fresno
- North Fresno, separate from Clovis
- North of Shields
- North Redlands
- Northeast Fresno
- Northwest Fresno
- Old Fig Garden
- Old Fig Garden and Van Ness
- Old West
- Orange Cove
- Parlier
- Pinedale
- Punjabi community west side of 99
- Raisin City
- Reedley
- Riverdale
- Rural communities
- San Joaquin
- Sanger
- Sanger Unified
- School attendance boundaries
- School District: Central
- School District: Clovis
- School District: Fresno
- Selma
- Selma-Kingsburg-Fowler-County-Sanitation-District
- Shaver/Foothills
- South Central Specific Plan Area (“Industrial Triangle”)
- South County
- South Tower
- Southeast Fresno
- Southeast Regional Disposal Site (SERDS)
- Southwest Fresno
- Southwest Fresno (Westside)
- Southwest Fresno Specific Plan
- Summerset Apartments
- Sunnyside
- Sunnyside, Kings Canyon, Olive Street
- Tarpey Village in Clovis
- Tombstone
- Tower District
- Train Line: Chinatown, Downtown Fresno, Lower and Central
- Tranquility
- Unincorporated rural communities
- Van Ness Extension (Sierra Sky Park, SJ River Bluffs)
- Water Works Districts (WWDs)
- West Area Neighborhoods Specific Plan
- West County
- West Fresno
- West Fresno, Vang Pao Elementary
- West Fresno, west of 99
- West Fresno/Central Area
- West Hills Community College District
- West of CA 41
- West of CA 99
- West of Fresno
- West of Fresno State
- West Park
- Westlands Water District
- Westside
- Woodpark Community Plan area
- Woodward Lake/Fort Washington
- Woodward Park

Board of Supervisors Maps

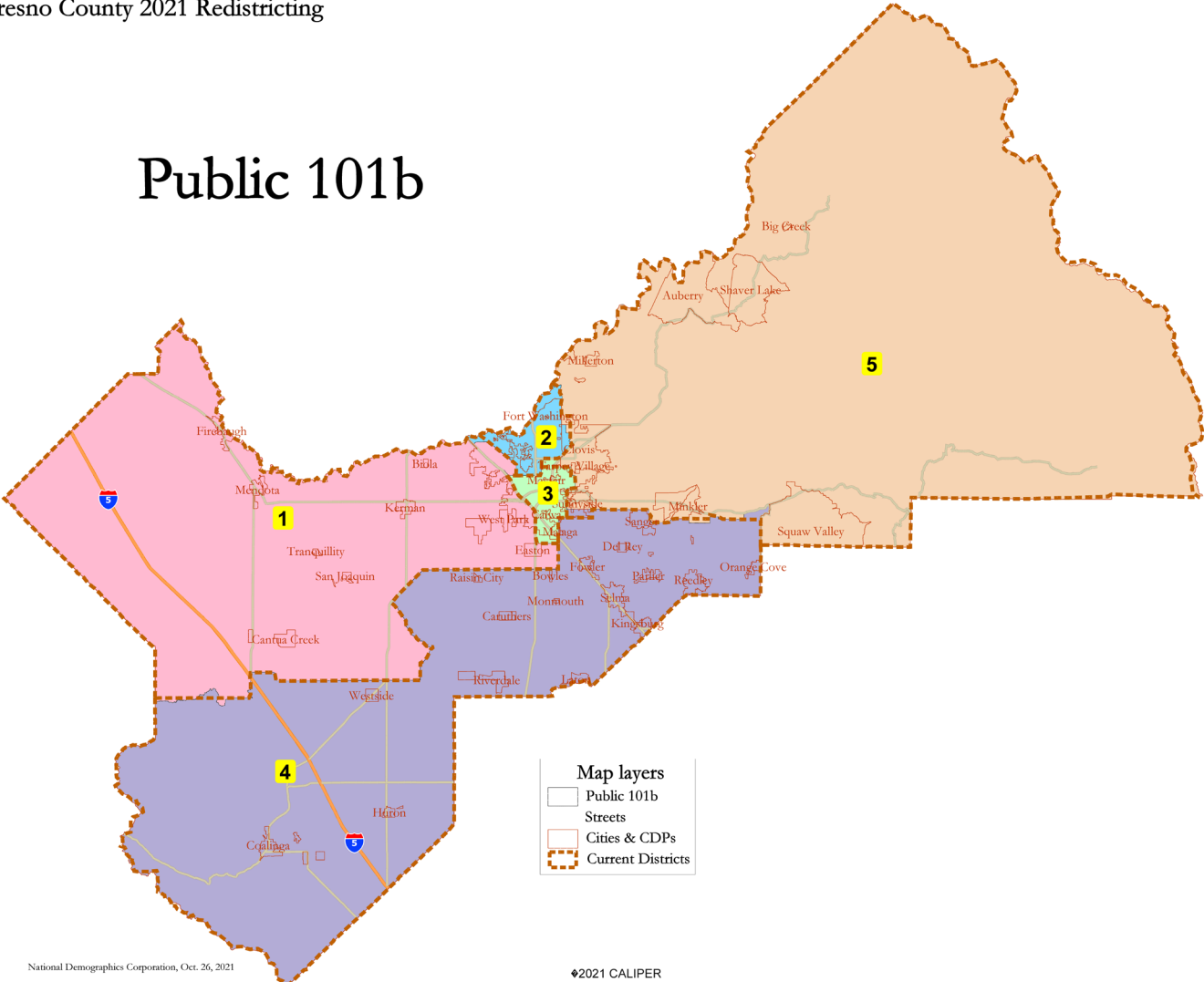
Board of Supervisors Public Hearing November 16, 2021

- **ARC-recommended maps: 1**
- **Post-ARC drafts maps: 1**
- **Maps based on 11.2.2021 Board comments: 6**
- **Compliant maps: 8**
- **Noncompliant maps: 0**

ARC-recommended Map: 101b

Fresno County 2021 Redistricting

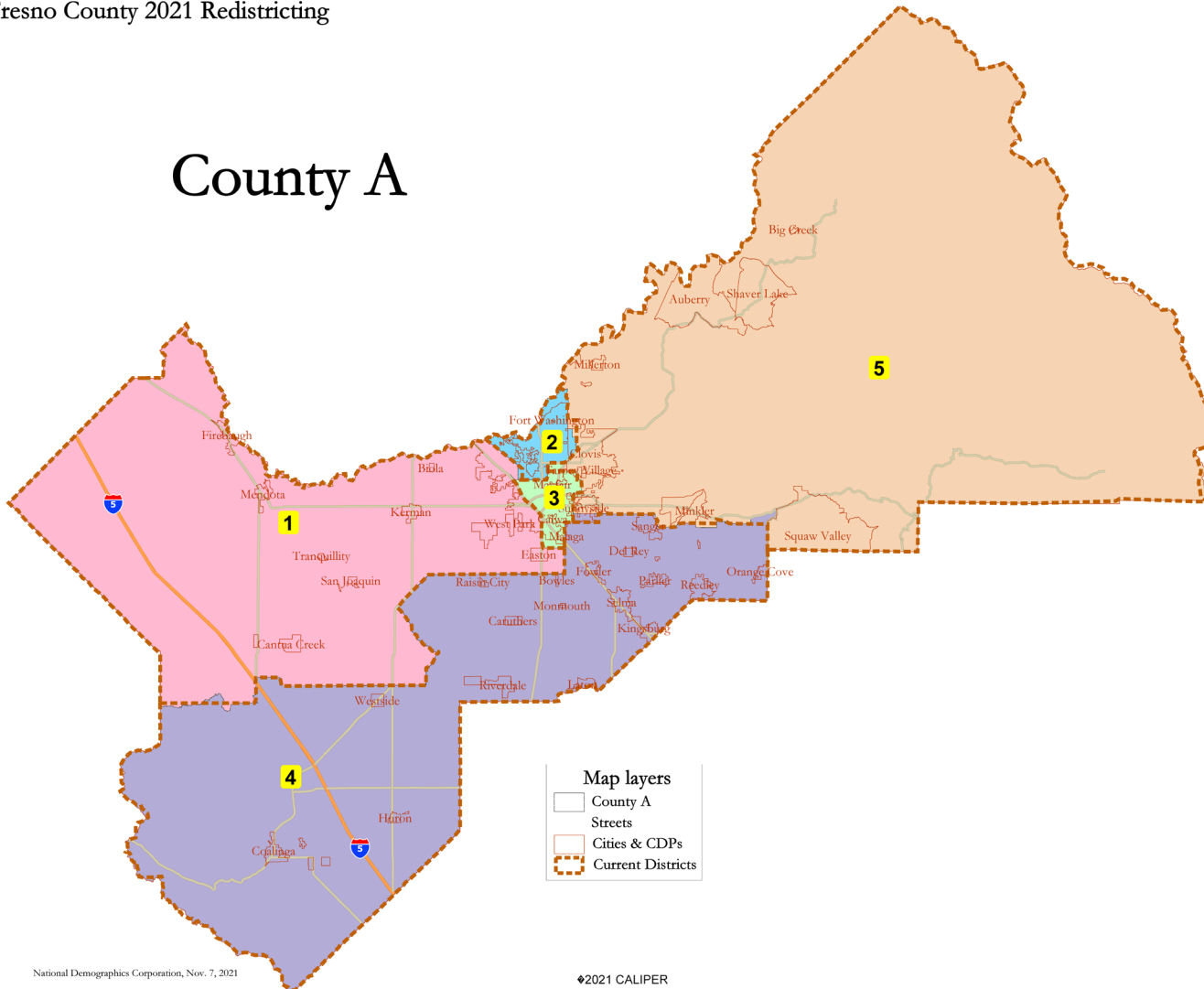
Public 101b



Board Comments Map: County A

Fresno County 2021 Redistricting

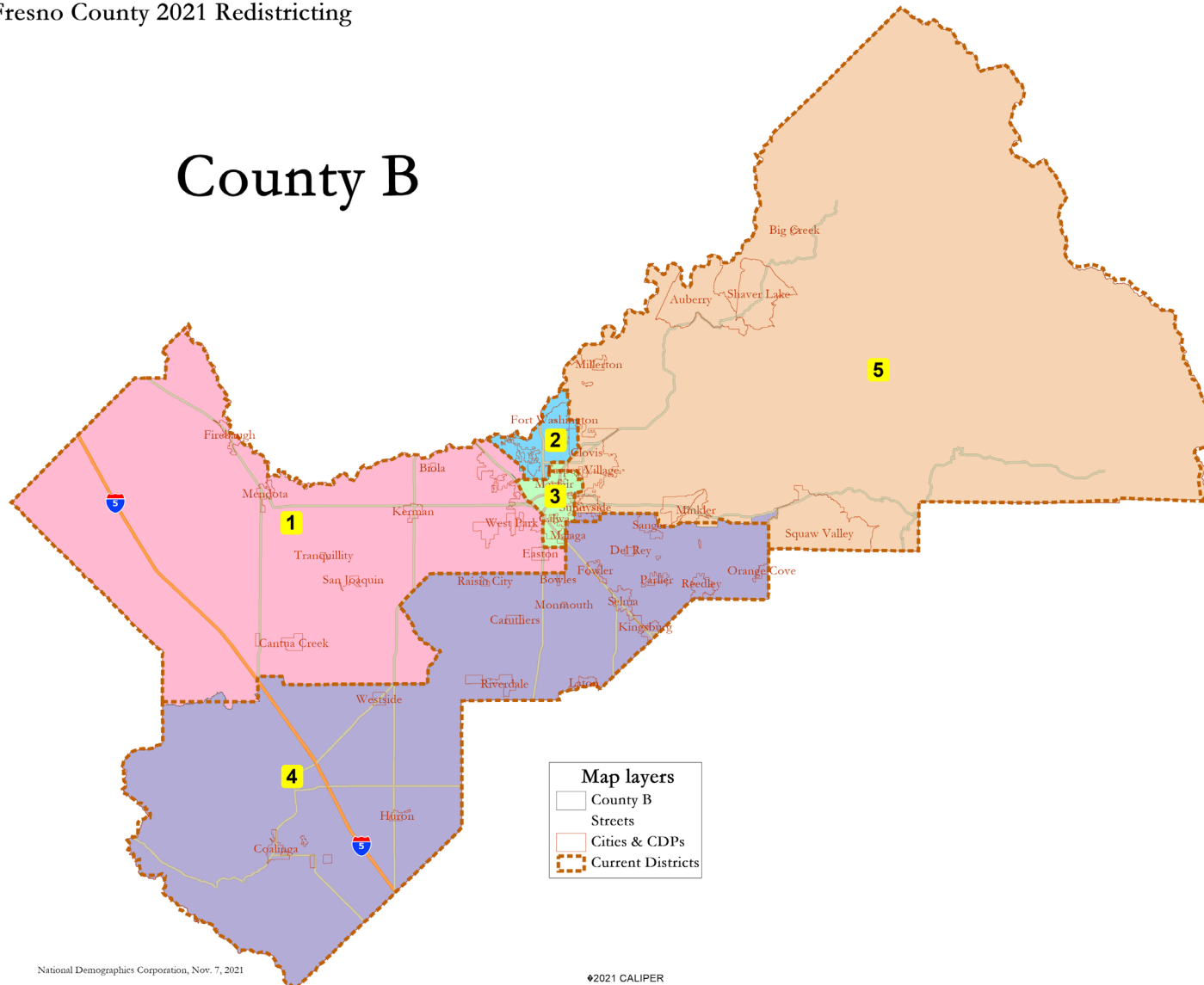
County A



Board Comments Map: County B

Fresno County 2021 Redistricting

County B



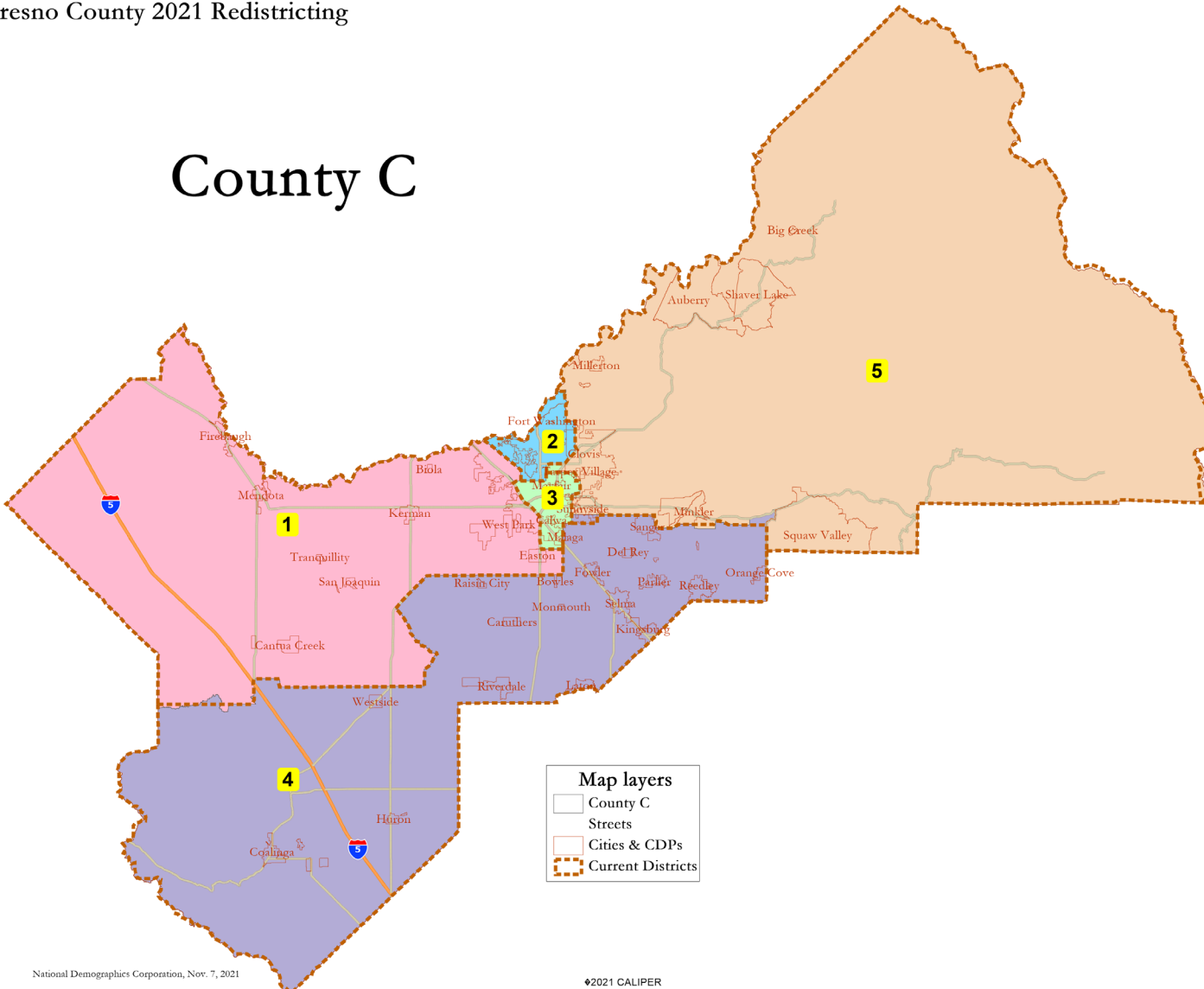
National Demographics Corporation, Nov. 7, 2021

©2021 CALIPER

Board Comments Map: County C

Fresno County 2021 Redistricting

County C



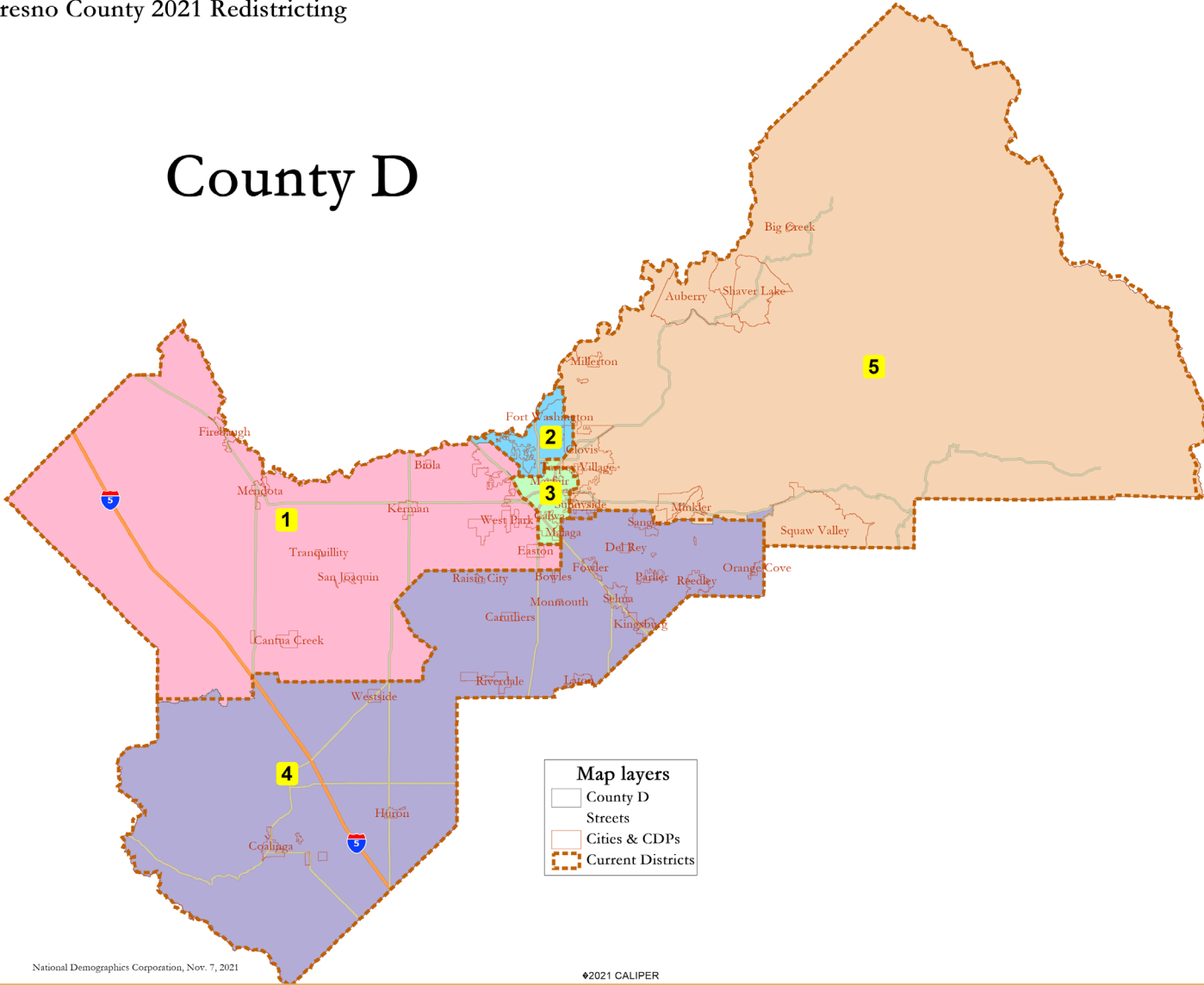
National Demographics Corporation, Nov. 7, 2021

©2021 CALIPER

Board Comments Map: County D

Fresno County 2021 Redistricting

County D



National Demographics Corporation, Nov. 7, 2021

©2021 CALIPER



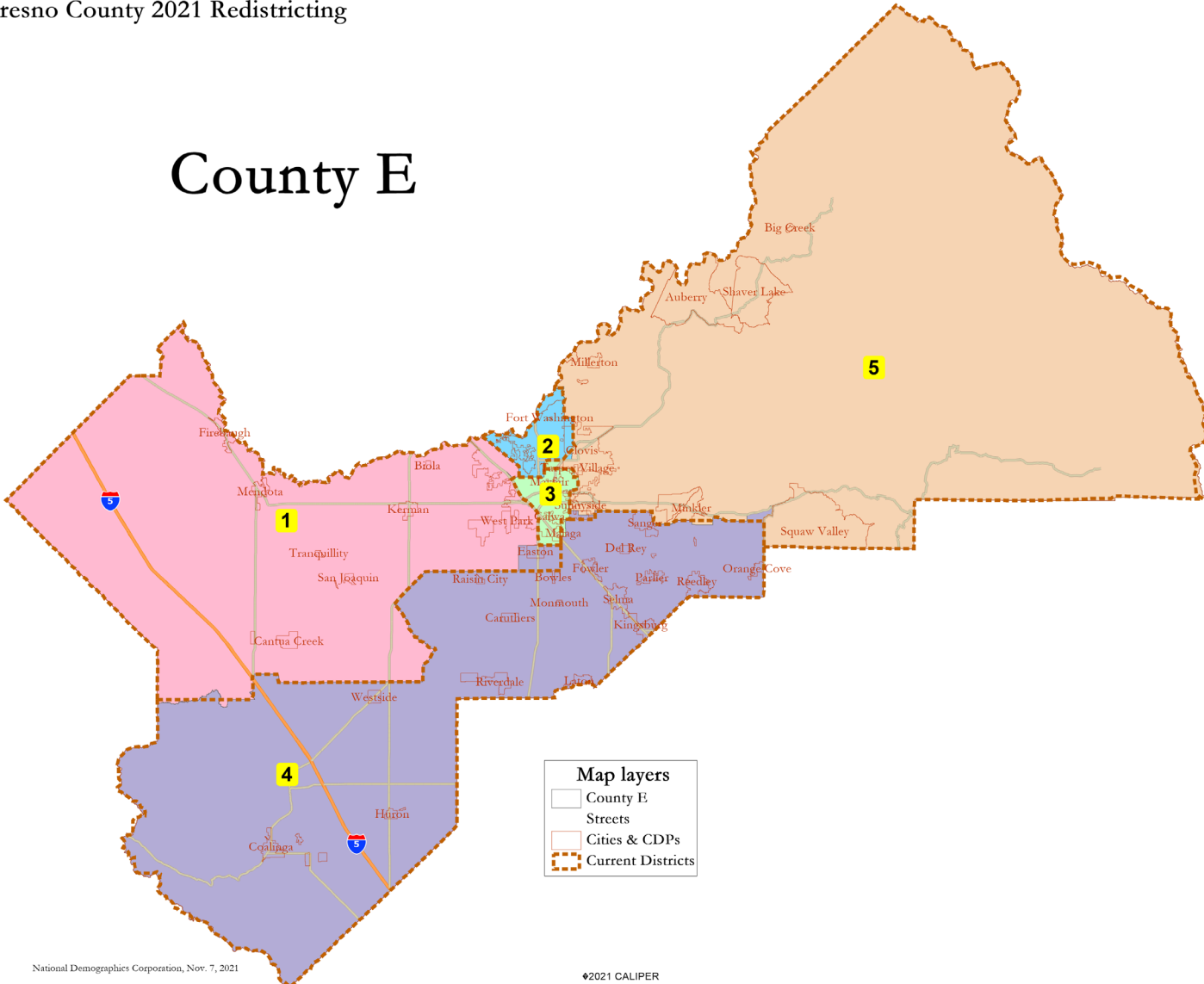
FRESNO COUNTY
REDISTRICTING 2021

November 16, 2021

Board Comments Map: County E

Fresno County 2021 Redistricting

County E



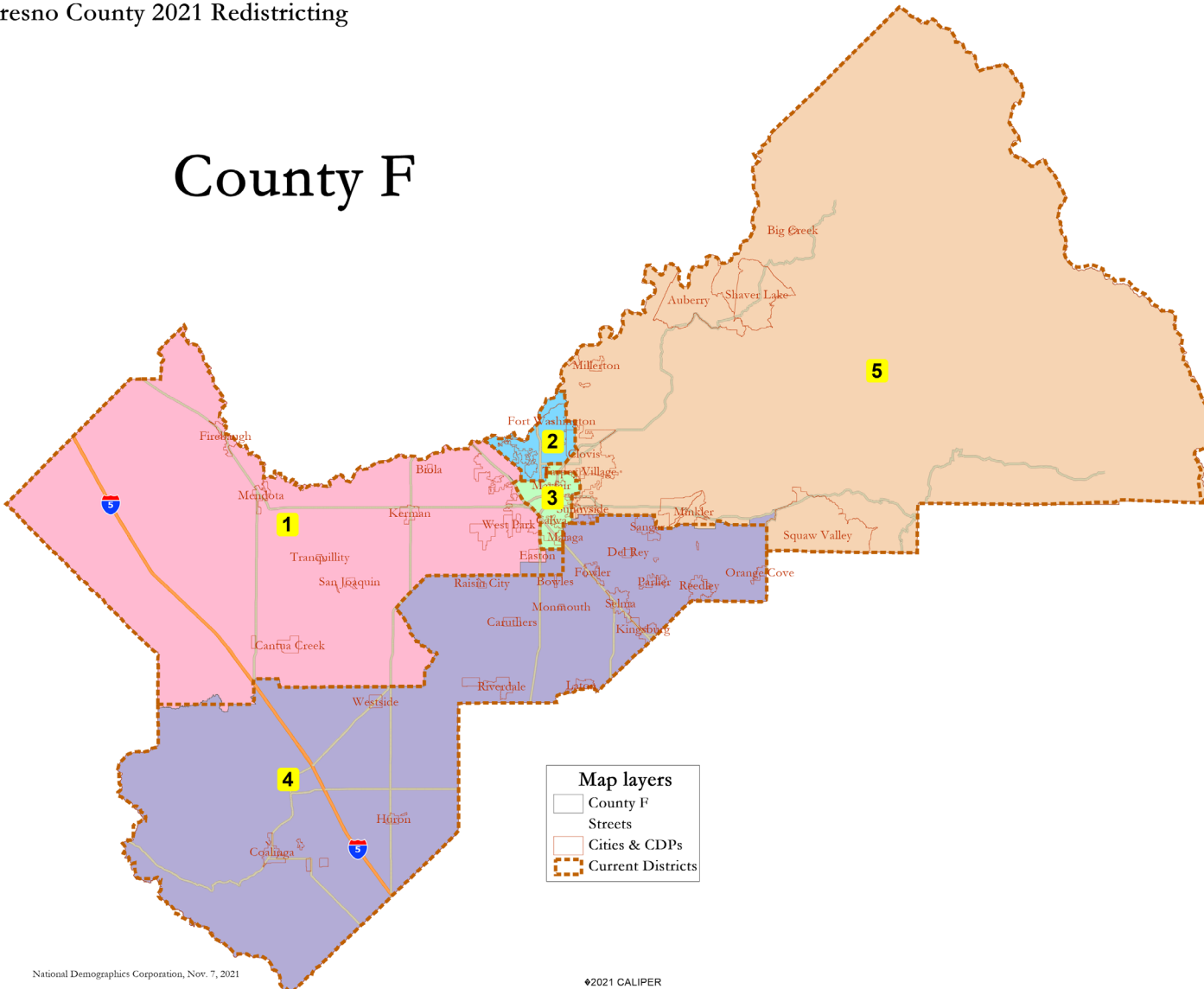
National Demographics Corporation, Nov. 7, 2021

©2021 CALIPER

Board Comments Map: County F

Fresno County 2021 Redistricting

County F



National Demographics Corporation, Nov. 7, 2021

©2021 CALIPER

Latino Majority/Minority Districts

Plan	CVAP					Registration					2020 Turnout				
	1	2	3	4	5	1	2	3	4	5	1	2	3	4	5
101B	51%	27%	54%	62%	26%	51%	26%	55%	62%	25%	48%	23%	53%	57%	23%
125	55%	27%	50%	64%	24%	54%	26%	51%	65%	24%	51%	24%	48%	61%	22%
A	51%	28%	54%	62%	26%	50%	26%	55%	62%	25%	48%	24%	53%	57%	23%
B	51%	27%	54%	62%	27%	51%	26%	55%	62%	25%	48%	23%	53%	57%	23%
C	51%	27%	54%	62%	27%	51%	25%	55%	62%	25%	48%	23%	53%	57%	23%
D	51%	27%	54%	62%	27%	51%	26%	55%	62%	25%	48%	23%	53%	57%	23%
E	51%	27%	54%	62%	27%	50%	26%	55%	62%	25%	48%	23%	53%	57%	23%
F	51%	27%	54%	62%	27%	51%	25%	55%	62%	25%	48%	23%	53%	57%	23%

Questions / Comments

