



# County of Fresno Redistricting Workshop

## Public Comments during Workshop

**Via Zoom** – *To make a public comment, click the “raise hand” icon and when called upon, please unmute yourself and state your name and organization, if any. Please also mute all other audio devices before speaking. Using multiple devices can cause audio feedback.*

**Via Phone** – *To make a public comment, press \*9 to raise your hand and when called upon, press \*6 to unmute yourself and state your name and organization, if any. Please also mute all other audio devices before speaking. Using multiple devices can cause audio feedback.*

September 29, 2021

Ryder Todd Smith, President, Tripepi Smith  
Jeff Tilton, Senior Consultant, National Demographics Corporation

# Traducción al Español Disponible

---

**Meeting is Being Recorded**

# Introductions

---

# Tonight's Goals

---

*You Learn From the Experts*

*Experts Listen to You*

*Mapping Tools for You*

*You Leave Empowered to Give Effective Feedback*

# Tonight's Schedule

---

## AGENDA

Process, Rules and Goals

Neighborhoods/Communities of Interest

Mapping Tools

Next Steps

# Redistricting Process

---

Step	Description
<b>Pre-Draft Public Hearing</b> August 12, 6:30 p.m. Health and Wellness Center	<ul style="list-style-type: none"> <li>• Advisory Commission Public Hearing</li> <li>• Held prior to release of draft maps</li> <li>• Educate, solicit input on the communities in the Districts</li> </ul>
<b>Census Data Release</b> August 12, 2021	<ul style="list-style-type: none"> <li>• Census Bureau releases official 2020 Census population data</li> </ul>
<b>California Data Release</b> September 20, 2021	<ul style="list-style-type: none"> <li>• California Statewide Database releases California's official 'prisoner-adjusted' 2020 redistricting data</li> </ul>
<b>Engagement Workshops</b>	<ul style="list-style-type: none"> <li>• July 14, 6-8 p.m. (Riverdale Unified School District)</li> <li>• August 3, 6-8 p.m. (Gaston Middle School)</li> <li>• August 4, 6-8 p.m. (Fresno High School)</li> <li>• August 21, 9:30-11:30 a.m. (Woodward Park Regional Library)</li> <li>• August 21, 2:30-4:30 p.m. (Clovis Veterans Memorial Center)</li> <li>• <b>September 29, 6-8 p.m. (via Zoom)</b></li> </ul>

# Redistricting Process (continued)

Step	Description
<b>Pre-Draft Public Hearing</b> October 5, 1:15 p.m. Health and Wellness Center	<ul style="list-style-type: none"> <li>• Advisory Commission Public Hearing</li> <li>• Recommend communities of interest, neighborhoods to Board of Supervisors</li> </ul>
<b>Pre-Draft Public Hearing</b> October 21, 6:30 p.m. Health and Wellness Center	<ul style="list-style-type: none"> <li>• Advisory Commission Public Hearing</li> <li>• Recommend communities of interest, neighborhoods to Board of Supervisors</li> <li>• Recommend draft maps to Board of Supervisors</li> <li>• Deadline to submit maps: October 10, 2021, 5 p.m.</li> <li>• Deadline for maps to be posted to website: October 14, 2021, 5 p.m.</li> </ul>
<b>Draft Map Public Hearing</b> November 2, 1 p.m. Board Chambers	<ul style="list-style-type: none"> <li>• Board of Supervisors Public Hearing</li> <li>• Discuss, revise the draft maps</li> <li>• Discuss the election sequence</li> <li>• Deadline for maps to be posted to website: October 27, 2021, 5 p.m.</li> </ul>
<b>Draft Map Public Hearing</b> November 16, 1 p.m. Board Chambers	<ul style="list-style-type: none"> <li>• Board of Supervisors Public Hearing</li> <li>• Select final map and election sequence</li> <li>• Deadline for maps to be posted to website: November 9, 2021, 5 p.m.</li> </ul>

**Dates/locations subject to change**

# Redistricting Rules and Goals

## 1. Federal Laws

- Equal Population
- Federal Voting Rights Act
- No Racial Gerrymandering



## 2. California Criteria for Counties

1. Geographically contiguous
2. Undivided neighborhoods and “communities of interest” (Socio-economic geographic areas that should be kept together)
3. Cities and CDPs
4. Easily identifiable boundaries
5. Compact (Do not bypass one group of people to get to a more distant group of people)

### Prohibited:

“Shall not favor or discriminate against a political party.”

## 3. Other Traditional Redistricting Principles

- Minimize voters shifted to different election years
- Respect voters’ choices / continuity in office
- Future population growth
- Preserving the core of existing districts



# Defining Neighborhoods

---

**1<sup>st</sup> Question: What is your neighborhood?**

**2<sup>nd</sup> Question: What are its geographic boundaries?**

**Examples of physical features defining a neighborhood boundary:**

- Natural neighborhood dividing lines, such as highway or major roads, rivers, canals and/or hills
- Areas around parks or schools
- Other neighborhood landmarks

**In the absence of public testimony, planning records and other similar documents may provide definition.**



# Beyond Neighborhoods: Defining Communities of Interest

---

## 1<sup>st</sup> Question: What defines your community?

- Geographic Area, plus
- Shared issue or characteristic
  - Shared social or economic interest
  - Impacted by county policies
- Tell us “your community’s story”

## 2<sup>nd</sup> Question: Would this community benefit from being “included within a single district for purposes of its effective and fair representation”?

- Or would it benefit more from having multiple representatives?

Definitions of Communities of Interest may not include relationships with political parties, incumbents, or political candidates.

# Possible Neighborhoods / Communities

---

**From July 14, 2021, public workshop:**

- **Riverdale**
- **Lanare**
- **East of CA 41/West of CA 41**
  - **Type of crops; no trees**
  - **Size of farms and corporations**
  - **Family farms**
  - **Housing type; access to resources**
- **Unincorporated communities**
  - **Lack access to water**
  - **Farmworker community**

**Submissions edited for clarity and brevity**

# Possible Neighborhoods / Communities

---

## From August 3, 2021, public workshop:

- Parlier
- Southeast Fresno (water quality)
- Parlier (sewer systems/storm water systems)
- Clovis to the foothills (east)
- West Fresno, west of 99 (new construction)
- Old West, historically recognized
- African American communities
- Sanger (infrastructure investments)
- Water services (how accessible to residents)
- Rural communities (high Latino populations)
- Foothills (remain unified w/ services)
- East vs. Urban

Submissions edited for clarity and brevity

# Possible Neighborhoods / Communities

---

## From August 4, 2021, public workshop:

- Food deserts, lack access to food quality options
- Shopping areas
- Communities without transportation
- Accessibility to jobs
- Loma Vista – existing and future growth
  - West:
  - East: McCall
- Heritage Grove
  - Willow, Sheppard, Copper
- Parlier:
  - water quality issues, access to water for low income communities, water rates going up
  - Transportation issues, traffic around school zones
  - Policy issues
- Communities centered around schools, enrollment boundaries for each of the schools

Submissions edited for clarity and brevity

# Possible Neighborhoods / Communities

---

## From August 4, 2021, public workshop (continued):

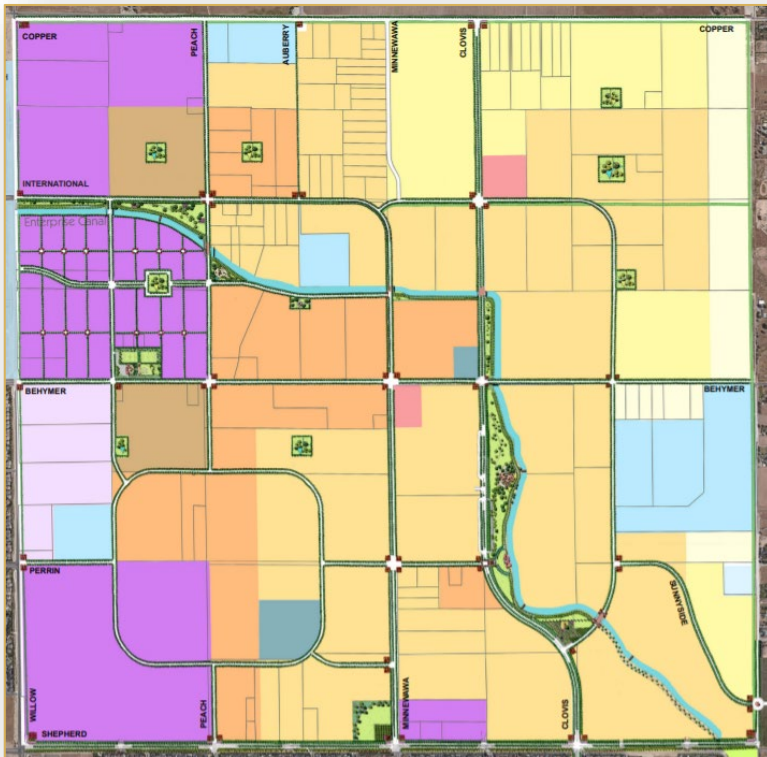
- Sunnyside
- Community Planning areas
  - Tower District
  - Southwest Fresno
- East side Fresno, Kings Canyon
- Pinedale
- Districts according to Police Departments
  - Public safety response times
  - County of Fresno as well as police within limits of City
- County Islands within city limits
- Mayfair / “Lake Don Pedro”
- Muscatel / West Central Fresno
- Central District
- Language spoken
- Historic Districts
- Historic Tracts
  - GIS data on Fresno website
- Canals, railways, freeways
  - Recognizable boundaries
- Renters, homeowners
- Historically redlined communities

Submissions edited for clarity and brevity

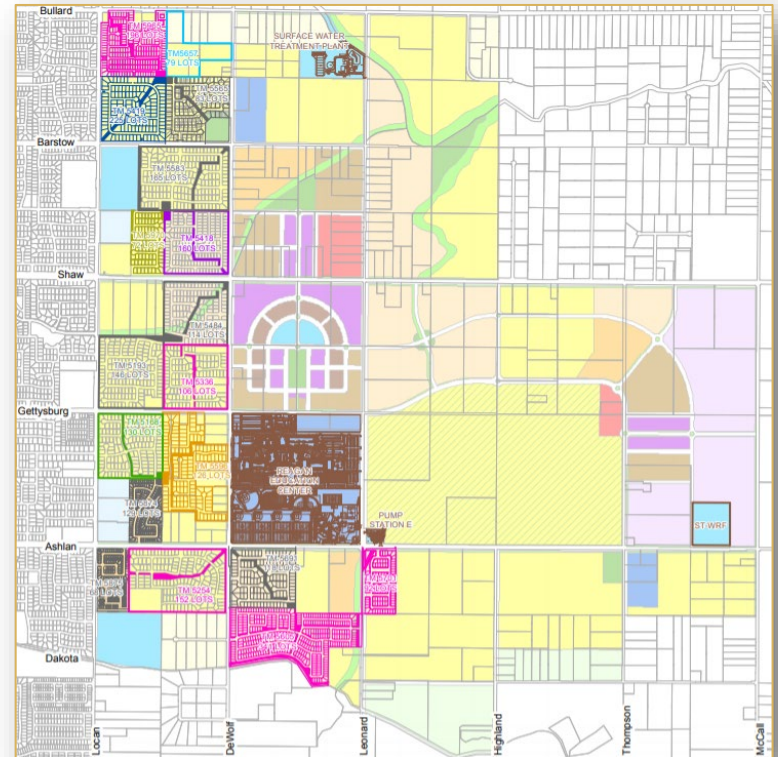
# Possible Neighborhoods / Communities

Submitted via email by Daniel Brannick:

- Heritage Grove Master Plan (City of Clovis)



- Loma Vista Specific Plan (City of Clovis)









# Possible Neighborhoods / Communities

---

## From August 21, 2021, public workshops:

- Fig Garden and Pinedale to be unified
- Unincorporated County Islands in District 2
  - Fig Garden, Fort Washington, Bullard – should not be divided amongst themselves
- West Fresno / Central Area to be unified
- 99 Freeway
- District 2 – 3 school districts
  - Clovis
  - Central
  - Fresno
- 99 divides North of Shields, strong dividing line
- Punjabi community along west side of 99

Submissions edited for clarity and brevity

# Possible Neighborhoods / Communities

---

## From August 21, 2021, public workshops (continued):

- Train Line – Chinatown, Downtown Fresno, Lower and Central
- Fresno State neighborhoods
  - Shaw, Herndon
- Cabins in Shaver / Foothills, united with today's location
  - Connected to communities in North Fresno: Fig Gardens
  - Disagreement on connecting these in resulting of diluting of voting block
- Downtown Fresno to be disconnected with South West / West Fresno – divide around City Hall / Van
- Small section of District 5 includes apartment buildings, should be in District 2 to keep students together – divided by 168
- Fig Garden Loop, currently divided by railroad, should be connected, Shaw Ave., Herndon

Submissions edited for clarity and brevity

# Possible Neighborhoods / Communities

---

## From August 21, 2021, public workshops (continued):

- Downtown Fresno, 93721, 93706, 93726
- Area around Clovis Library
- Kings Canyon corridors
  - Sanger, Clovis, Fresno Unified Districts
  - Minority owned businesses
  - 93727, new developments East
- Asian Village, Chestnut (West), Kings Canyon (South), Clovis (East)
- First & McKinley – City of Fresno, Romain Park Area
- El Dorado Park – Low-income renters area, Shaw & 6<sup>th</sup>
- West Fresno, Vang Pao Elementary
  - Elm Ave going to South, Washington Union HS District, Central Union HS
  - California and West

Submissions edited for clarity and brevity

# Possible Neighborhoods / Communities

---

## From August 21, 2021, public workshops (continued):

- South of Shaw, West of Palm, down to McKinley, West to railroad
- Areas South of McKinley, low access to internet, high child population count, non-English speakers
- Cities west of 41
- East of 41 – Calwa, Malaga
- Melody Park Area
- Summerset Apartments, across the street from FIRM
- Selma, Clovis East, Central Unified, along 99 (Hmong/Punjabi)

Submissions edited for clarity and brevity



# Your Turn: Communities of Interest

---

- ❑ Who is a part of your community?
- ❑ What are some meaningful places your community recognizes or gathers at?
- ❑ What are some common concerns you share with a group?
- ❑ What are some common cultural characteristics that unite a community?
- ❑ What are common work-related traits that bring a community together ?
- ❑ What is significant about the physical environment?

**Your thoughts and ideas will become part of the record and be recorded/written down**

# Public Mapping and Map Review Tools

---

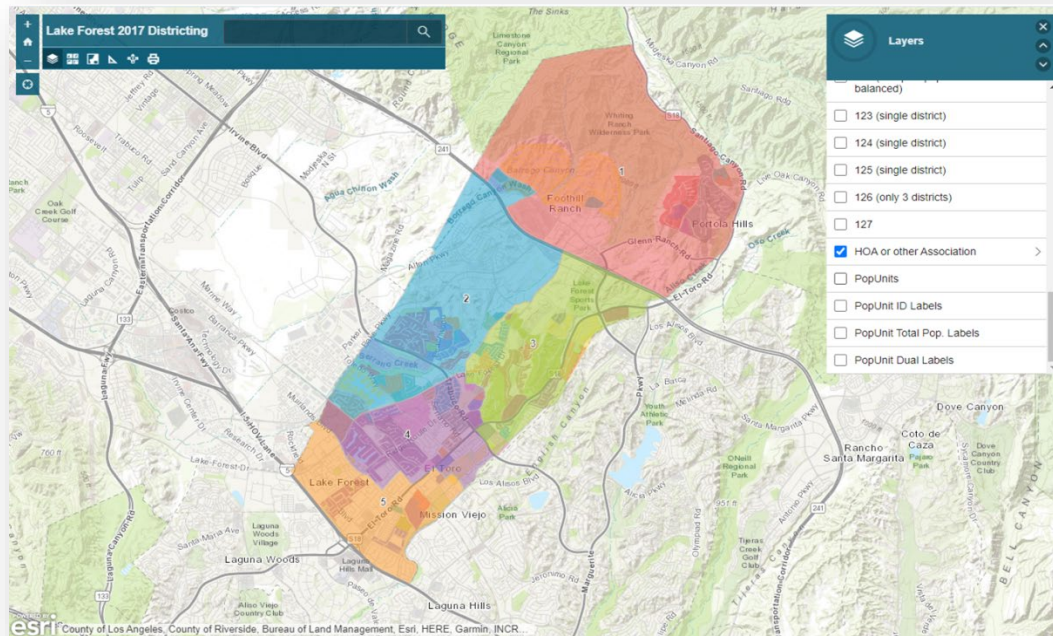
- **Different tools for different purposes**
- **Different tools for different levels of technical skill and interest**
  - Simple “review draft maps” tool
  - Easy-to-use “Draw your neighborhood” tool
  - Paper- and Excel-based simple “Draw a draft map” tools
  - Powerful, data-rich “Draw a draft map” tool
  - Option: Submit using your own software

Whether you use the powerful (but complicated) online mapping tool, Excel, the paper kit, or just draw on a napkin, we welcome your maps!

# Simple Map Review Tool

## Online Interactive Review Map

- ESRI's "ArcGIS Online" – similar to Google Maps in ease of use
- Used to review, analyze and compare maps, not to create them
- Includes overlays of "community of interest" and other Story Map data
- [Sample map from Lake Forest](#)

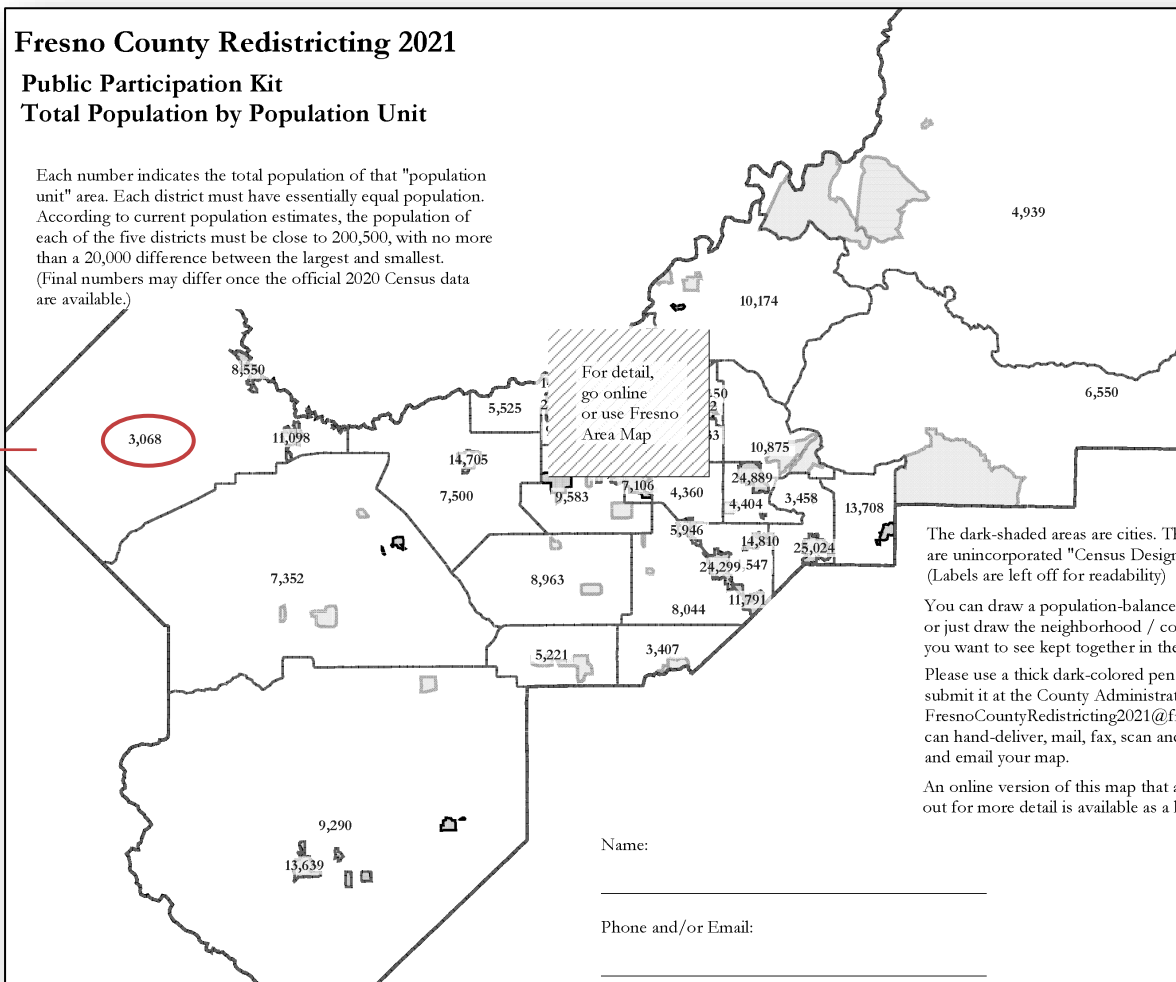




# Simple Map Drawing Tool

## Paper “Public Participation Kit”

- For those without internet access or who prefer paper
- Total Population Counts only – no demographic numbers
- Geographic units would be tracts, CDP’s and smaller cities

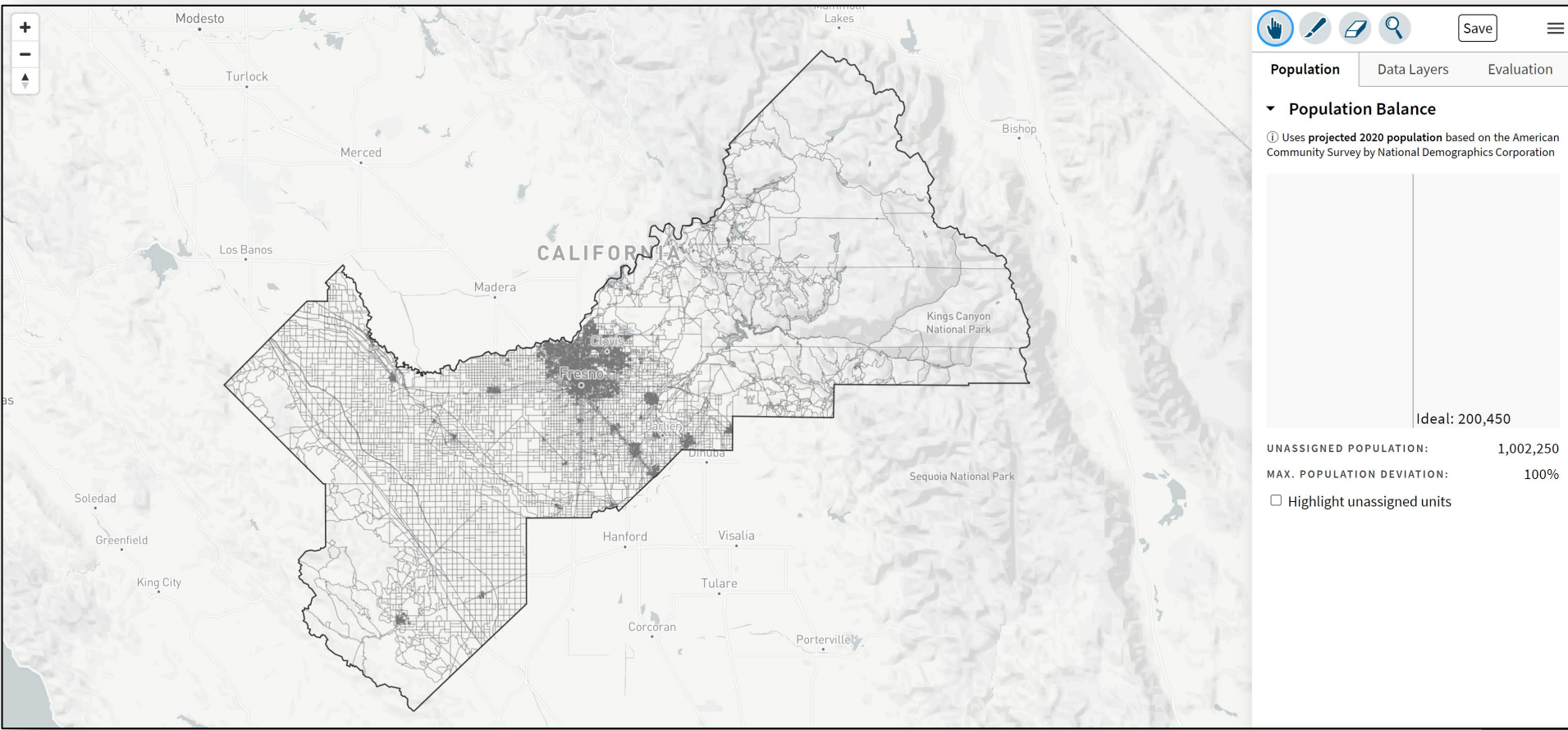




# DistrictR

## “Draw Your Community of Interest” focus

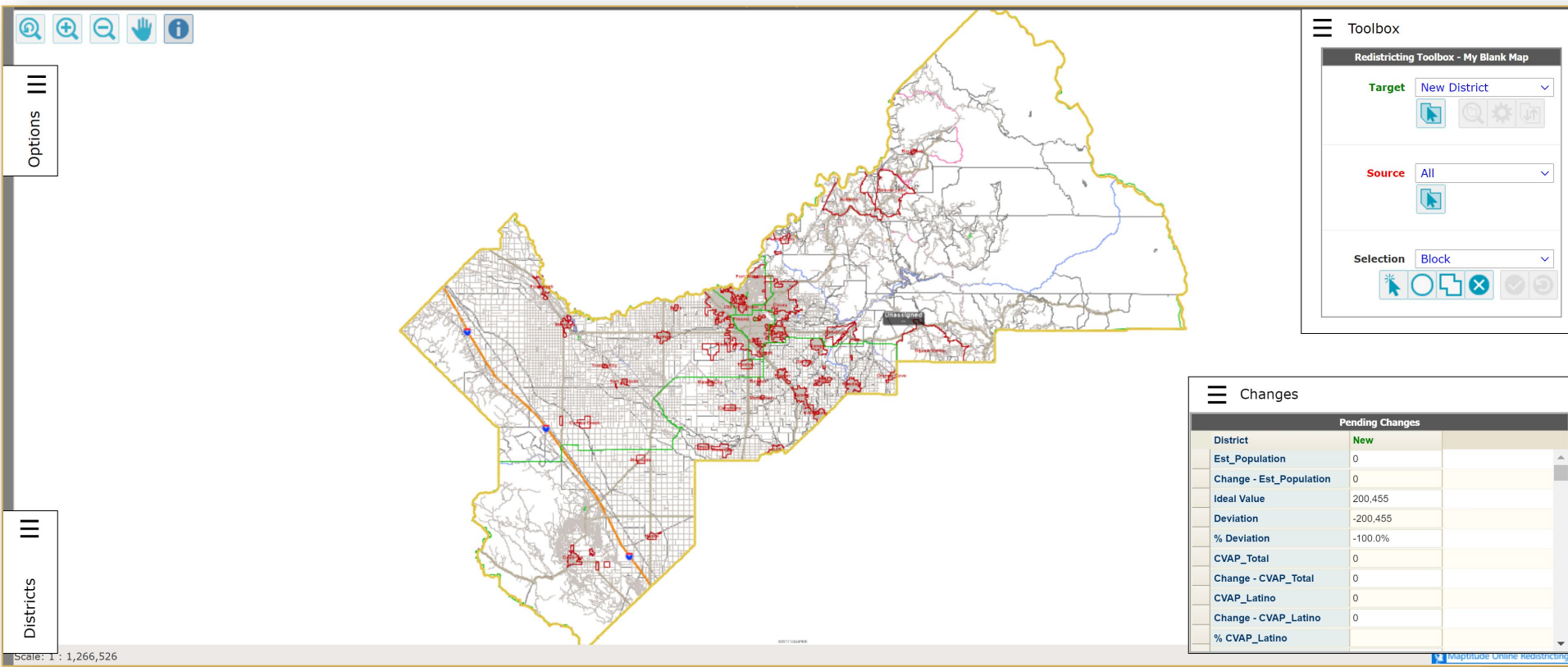
- [districtR.org/tag/Fresno](https://districtR.org/tag/Fresno)
- Also includes simple district-mapping tool; Only available in English
- Similar external options: [Representable.org](https://representable.org), [DrawMyCACommunity.org](https://drawmycacomunity.org)



# Caliper's "Maptitude Online Redistricting"

## Full Database, Powerful Online Mapping Tool

- <https://inzolia.caliper.com/FresnoCounty/Default.aspx>
- Powerful, common, data-rich online tool
- Six language options: English, Spanish, Portuguese, Vietnamese, Mandarin and Korean



The screenshot displays the Maptitude Online Redistricting interface. The main map shows Fresno County with various redistricting boundaries in red, green, and blue. A toolbar on the left includes options for zooming and panning. The 'Options' and 'Districts' panels are visible on the left side. The 'Toolbox' on the right contains settings for 'Target' (New District), 'Source' (All), and 'Selection' (Block). The 'Changes' panel at the bottom right shows a table of pending changes for a new district.

Pending Changes	
District	New
Est_Population	0
Change - Est_Population	0
Ideal Value	200,455
Deviation	-200,455
% Deviation	-100.0%
CVAP_Total	0
Change - CVAP_Total	0
CVAP_Latino	0
Change - CVAP_Latino	0
% CVAP_Latino	



# Share Your Thoughts

HOME COMMISSION MEETINGS REDISTRICTING RESOURCES

 FRESNO COUNTY  
**REDISTRICTING 2021**

The County of Fresno is currently initiating the 2021 Redistricting process.

Applications for membership on the advisory commission to the Board were accepted from April 27, 2021 through May 14, 2021, and the commission was selected by the Board of Supervisors on May 25, 2021.

For more information, please contact [FresnoCounty2021Redistricting@fresnocountyca.gov](mailto:FresnoCounty2021Redistricting@fresnocountyca.gov).



**Website: [bit.ly/FresnoCountyRedistricting2021](https://bit.ly/FresnoCountyRedistricting2021)**

**Phone: 559.600.1221 | Email: [FresnoCounty2021Redistricting@fresnocountyca.gov](mailto:FresnoCounty2021Redistricting@fresnocountyca.gov)**