

A stylized outline of Fresno County, with the top portion in yellow and the bottom portion in green.

FRESNO COUNTY REDISTRICTING 2021

County of Fresno Redistricting Workshop

July 14, 2021

Ryder Todd Smith, President, Tripepi Smith
Jeff Tilton, Senior Consultant, National Demographics Corporation

Traducción al Español Disponible

Meeting is Being Recorded

Introductions

Upcoming Meetings

Step	Description
Initial Public Hearings August 12 & October 21 <i>6:30 p.m.</i>	<ul style="list-style-type: none"> • Held prior to release of draft maps • Educate and to solicit input on the communities in the Districts
Upcoming Workshops	<ul style="list-style-type: none"> • August 3, 6-8 p.m. (Gaston Middle School) • August 4, 6-8 p.m. (Fresno High School) • August 21, 9-11 a.m. (Bullard High School) • August 21, 2-4 p.m. (Clovis Veterans Memorial Center)
Public Hearing November 2 <i>1 p.m.</i>	<ul style="list-style-type: none"> • Discuss and revise the draft maps • Discuss the election sequence • Draft maps due: October 20, 1 p.m. • Draft maps posted to website by October 27, 1 p.m.
Public Hearing November 16 <i>1 p.m.</i>	<ul style="list-style-type: none"> • Discuss and select a map • Discuss and determine the election sequence • Draft maps due: November 3, 1 p.m. • Draft maps posted to website by November 9, 1 p.m.

Today's Goals

You Learn From the Experts

Experts Listen to You

Mapping Tools Training

You Leave Empowered to Give Effective Feedback

Today's Schedule

AGENDA: Start at 6 p.m.; Close at 8 p.m.

Process, Rules and Goals

Neighborhoods/Communities of Interest

Mapping Tools

Next Steps

Redistricting Process

Step	Description
Public Hearings August 12 & October 21 <i>6:30 p.m.</i>	<ul style="list-style-type: none"> • Held prior to release of draft maps • Educate and to solicit input on the communities in the Districts
Census Data Release Mid/Late August	<ul style="list-style-type: none"> • Census Bureau releases official 2020 Census population data
California Data Release Early October 2021	<ul style="list-style-type: none"> • California Statewide Database releases California's official 'prisoner-adjusted' 2020 redistricting data
Public Hearing November 2 <i>1 p.m.</i>	<ul style="list-style-type: none"> • Discuss and revise the draft maps • Discuss the election sequence • Draft maps due: October 20, 1 p.m. • Draft maps posted to website by October 27, 1 p.m.
Public Hearing November 16 <i>1 p.m.</i>	<ul style="list-style-type: none"> • Discuss and select a map • Discuss and determine the election sequence • Draft maps due: November 3, 1 p.m. • Draft maps posted to website by November 9, 1 p.m.

Redistricting Rules and Goals

1. Federal Laws

Equal Population
Federal Voting Rights Act
No Racial Gerrymandering



2. California Criteria for Counties

Geographically contiguous
Undivided neighborhoods and “communities of interest”
(Socio-economic geographic areas that should be kept together)
Cities and CDPs
Easily identifiable boundaries
Compact
(Do not bypass one group of people to get to a more distant group of people)
Prohibited:
“Shall not favor or discriminate against a political party.”

3. Other Traditional Redistricting Principles

Minimize voters shifted to different election years
Respect voters’ choices / continuity in office
Future population growth
Preserving the core of existing districts

Neighborhoods/Communities of Interest

1st Question: what is your neighborhood?

2nd Question: what are its geographic boundaries?

Examples of physical features defining a neighborhood boundary:

- Natural neighborhood dividing lines, such as highway or major roads, rivers, canals and/or hills
- Areas around parks or schools
- Other neighborhood landmarks

In the absence of public testimony, planning records and other similar documents may provide definition.



Beyond Neighborhoods: Defining Communities of Interest

1st Question: what defines your community?

- Geographic Area, plus
- Shared issue or characteristic
 - Shared social or economic interest
 - Impacted by county policies
- Tell us “your community’s story”

2nd Question: Would this community benefit from being “included within a single district for purposes of its effective and fair representation”?

- Or would it benefit more from having multiple representatives?

Definitions of Communities of Interest may not include relationships with political parties, incumbents, or political candidates.

Q&A With The Experts

Neighbor Chats

- ❑ 15 minutes to review maps, think about communities of interest, talk with your fellow community members
- ❑ Experts will be available to answer your questions
- ❑ After 15 minutes, we will swing by each group and ask you to share your thoughts on communities of interest
- ❑ Your thoughts and ideas will become part of the record and be recorded / written down

Break

Public Mapping and Map Review Tools

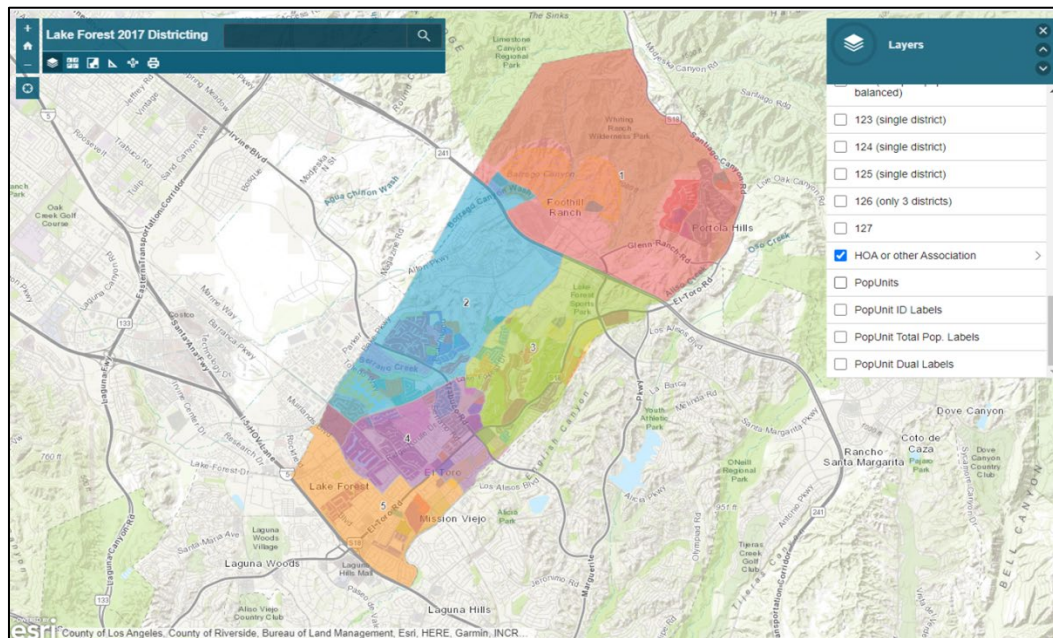
- **Different tools for different purposes**
- **Different tools for different levels of technical skill and interest**
 - Simple “review draft maps” tool
 - Easy-to-use “Draw your neighborhood” tool
 - Paper- and Excel-based simple “Draw a draft map” tools
 - Powerful, data-rich “Draw a draft map” tool

Whether you use the powerful (but complicated) online mapping tool, Excel, the paper kit, or just draw on a napkin, we welcome your maps!

Simple Map Review Tool

Online Interactive Review Map

- ESRI's "ArcGIS Online" – similar to Google Maps in ease of use
- Used to review, analyze and compare maps, not to create them
- Includes overlays of "community of interest" and other Story Map data
- [Sample map from Lake Forest](#)



Simple Map Drawing Tool

Paper “Public Participation Kit”

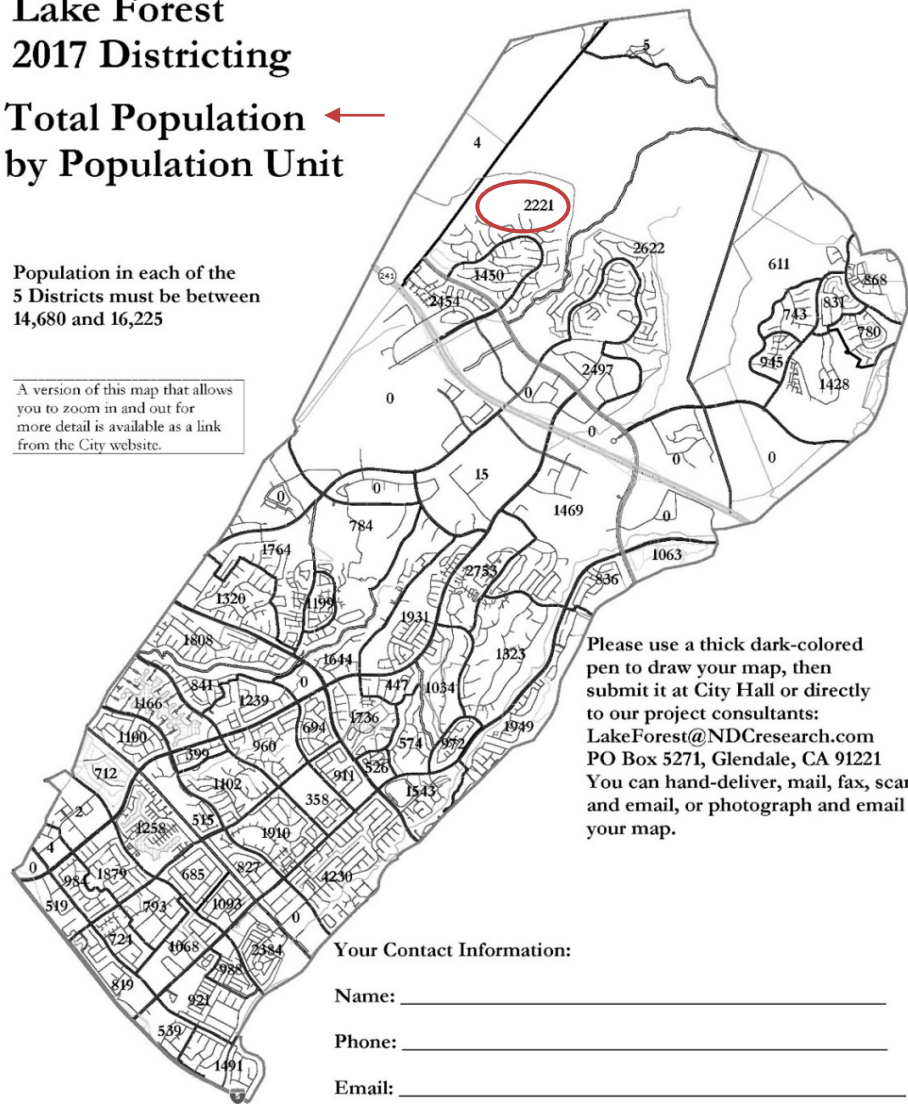
- For those without internet access or who prefer paper
- Total Population Counts only – no demographic numbers
- Geographic units would be tracts, CDP’s and smaller cities

Lake Forest 2017 Districting

Total Population ← by Population Unit

Population in each of the 5 Districts must be between 14,680 and 16,225

A version of this map that allows you to zoom in and out for more detail is available as a link from the City website.



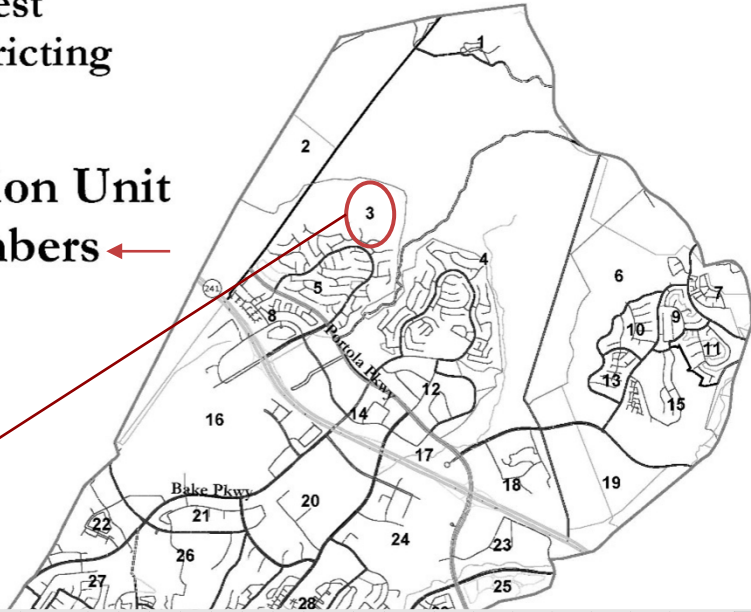
Simple Map Drawing Tool + Excel Supplement

“Public Participation Kit”

- For those who know Excel and do not wish to use online tools
- Adds CVAP data
- Excel does the math
- Geographic units would be tracts, CDP’s and smaller cities

Lake Forest
2017 Districting

Population Unit
ID Numbers ←



		Counts							Percentages											
Group	Category	1	2	3	4	5	6	7	Unassigned	Total	1	2	3	4	5	6	7	Unassigned	Total	
Tot. Pop.		0	0	0	0	0	0	0	107,197	107,197	0	-100%	-100%	-100%	-100%	-100%	-100%	-100%	0	0.00%
Total Population		34,182	64,294	1,919	4,530	83,090	83,090	22,928	33,657	3,861	4.53%	4.53%	4.53%	4.53%	4.53%	4.53%	4.53%	21%	28%	
Total CVAP		0	0	0	0	0	0	0	18,936	18,936	0	0%	0%	0%	0%	0%	0%	0%	0%	20%
Total Reg.		0	0	0	0	0	0	0	13,374	13,374	0	0%	0%	0%	0%	0%	0%	0%	0%	11%

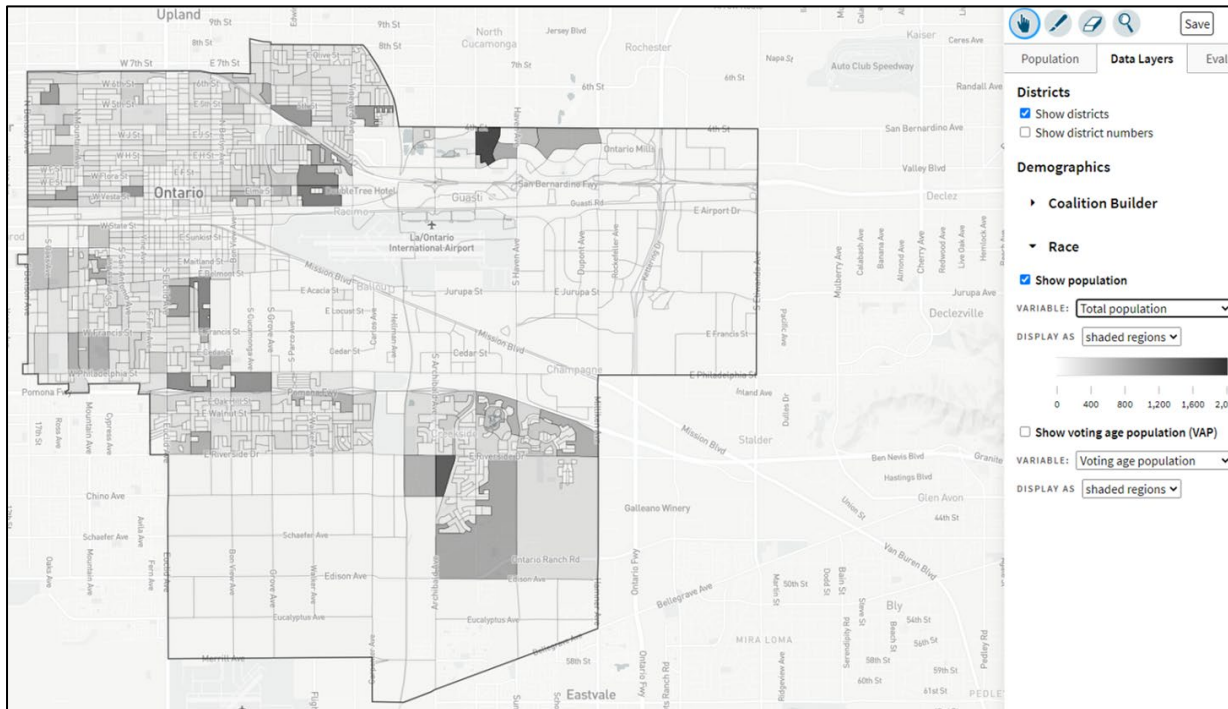
Excel interface showing the 'Public Participation Kit' spreadsheet. The spreadsheet has columns for District, Unit, Total Population, Voting Age Population, Citizen Voting Age Population, and Nov. 2014 Registration. Row 3 is highlighted in yellow, and row 4 is circled in red. The spreadsheet title is 'Lake Forest 5-district Kit_ENG.xlsx'.

Distict	Unit	Total Population					Voting Age Population					Citizen Voting Age Population					Nov. 2014 Registration					
		Tot. Pop.	Hisp	Wht	Blk	NH	total	Hisp	Wht	Blk	Asn	tot	Hisp	Wht	Blk	Asn	tot	latino	asn	fil	tot	
1	1	1,216	642	557	18	15	873	397	442	12	831	390	441	0	574	195	7	3	245	63	132	
2	2	2,367	1,128	1,053	43	96	1,784	741	899	74	1,915	730	1,140	0	45	1,299	435	14	7	555	140	36
3	3	1,643	768	278	42	25	1,036	741	236	15	400	235	145	0	20	505	286	3	4	161	73	37
4	4	1,768	734	855	62	84	1,272	464	685	62	1,231	461	639	19	111	1,022	366	11	11	391	89	38
5	5	2,001	209	1,655	14	79	1,639	144	1,392	64	1,511	88	1,337	12	38	1,776	146	46	7	1,069	67	40
6	6	612	56	499	4	39	517	37	440	26	471	22	423	3	15	525	38	15	2	337	18	42
7	7	1,753	1,180	501	70	10	1,945	767	114	10	780	335	410	0	0	797	378	7	4	241	70	42

DistrictR

“Draw Your Community of Interest” focus

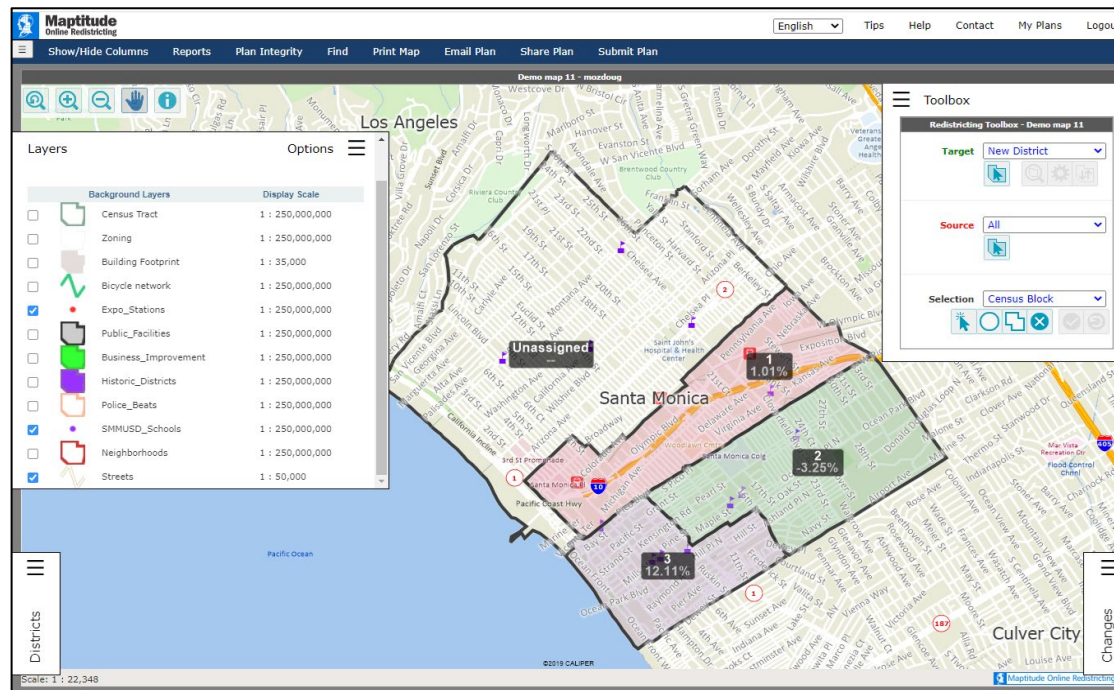
- Also includes simple district-mapping tool
- Only available in English
- Similar external options: [Representable.org](https://representable.org), [DrawMyCACommunity.org](https://drawmycacommunity.org)



Caliper's “Maptitude Online Redistricting”

Full Database, Powerful Online Mapping Tool

- Powerful, common, data-rich online tool
- Six language options: English, Spanish, Portuguese, Vietnamese, Mandarin and Korean
- [Quick Start Guide](#)



Share Your Thoughts

HOME COMMISSION MEETINGS REDISTRICTING RESOURCES

 FRESNO COUNTY
REDISTRICTING 2021

The County of Fresno is currently initiating the 2021 Redistricting process.

Applications for membership on the advisory commission to the Board were accepted from April 27, 2021 through May 14, 2021, and the commission was selected by the Board of Supervisors on May 25, 2021.

For more information, please contact FresnoCounty2021Redistricting@fresnocountyca.gov.

Website: www.co.fresno.ca.us/resources/redistricting

Phone: 559.600.1221 | **Email:** FresnoCounty2021Redistricting@fresnocountyca.gov