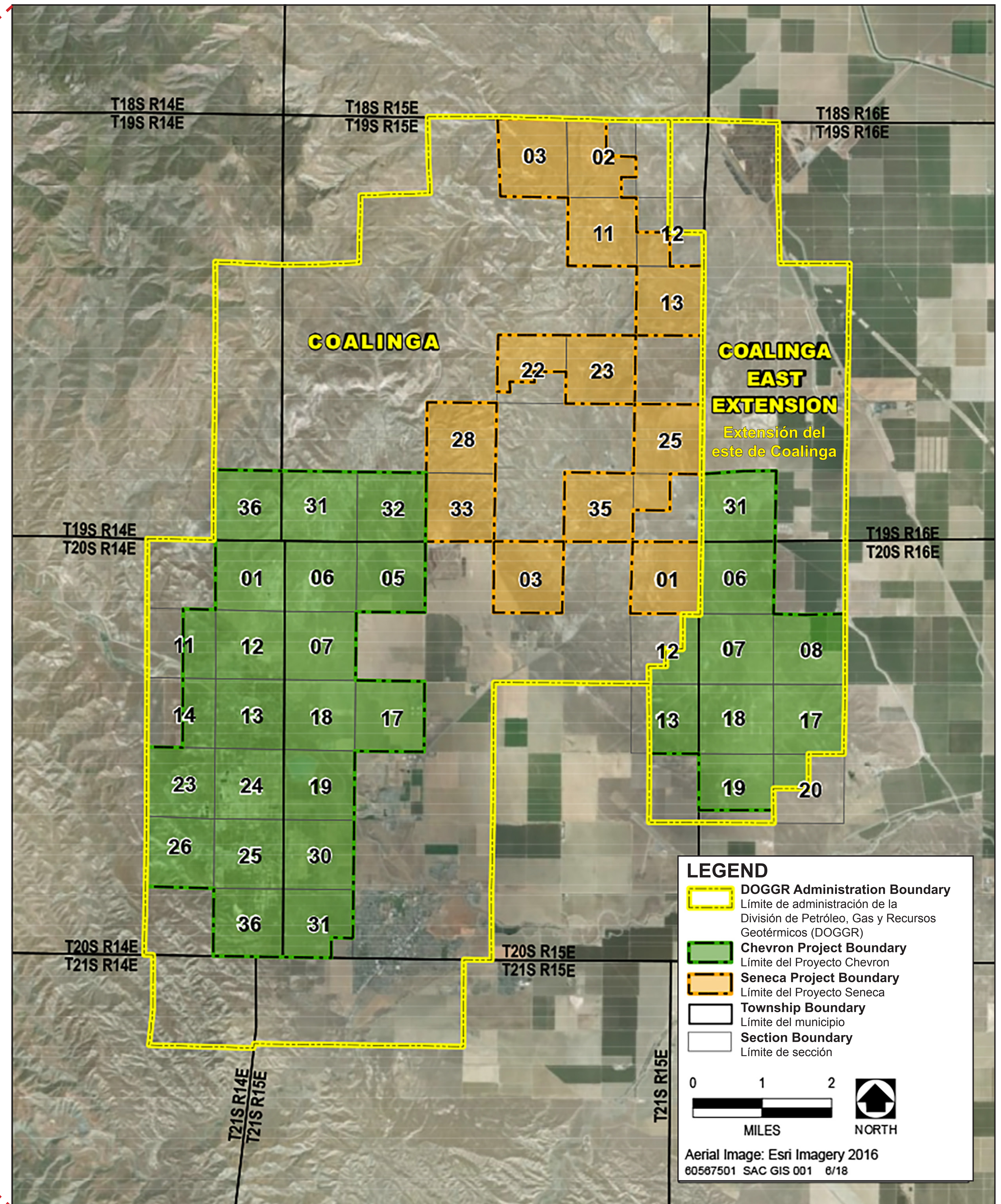
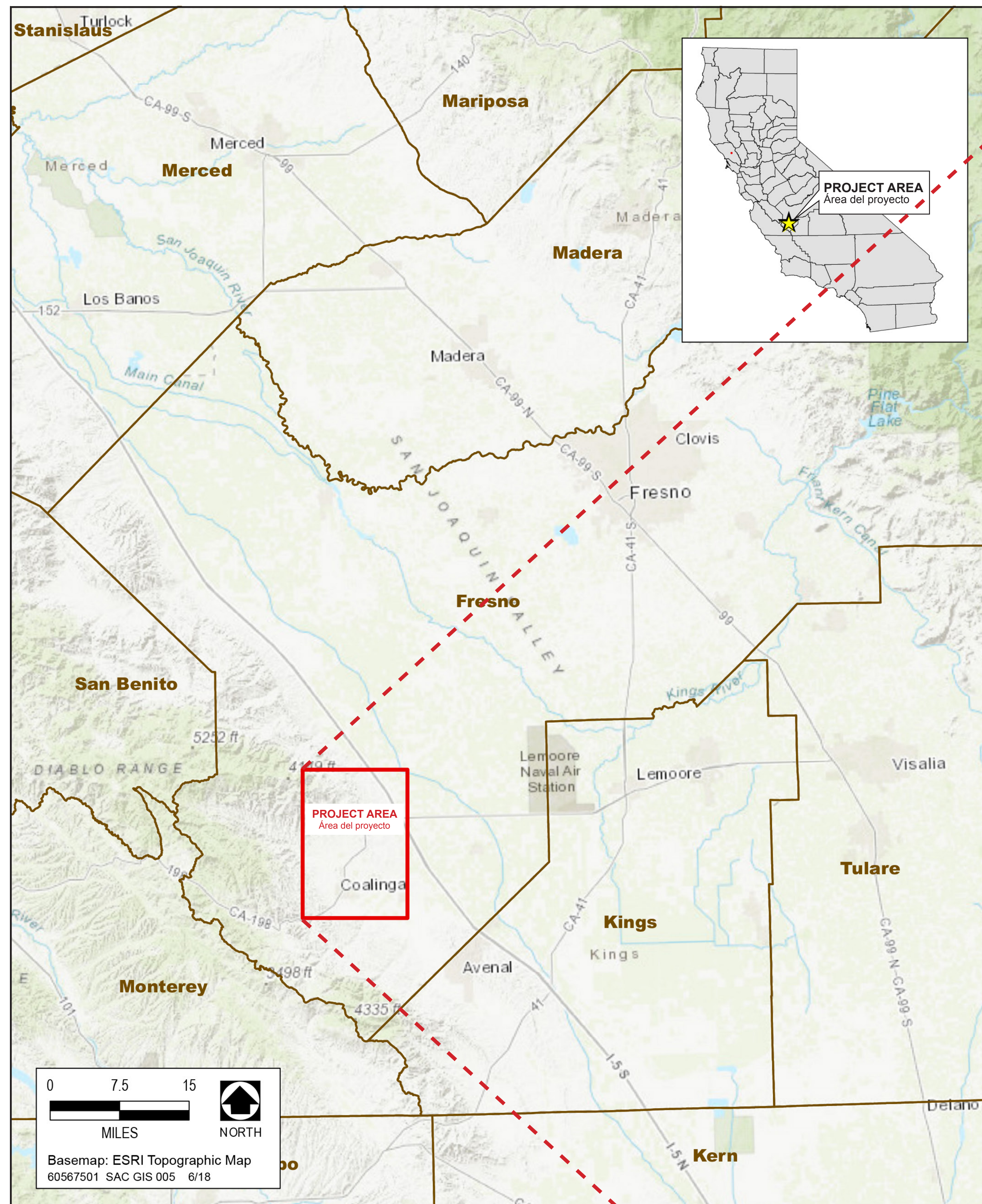


# Project Location

## Ubicación del proyecto



**LEGEND**

- DOGGR Administration Boundary  
Límite de administración de la División de Petróleo, Gas y Recursos Geotérmicos (DOGGR)
- Chevron Project Boundary  
Límite del Proyecto Chevron
- Seneca Project Boundary  
Límite del Proyecto Seneca
- Township Boundary  
Límite del municipio
- Section Boundary  
Límite de sección

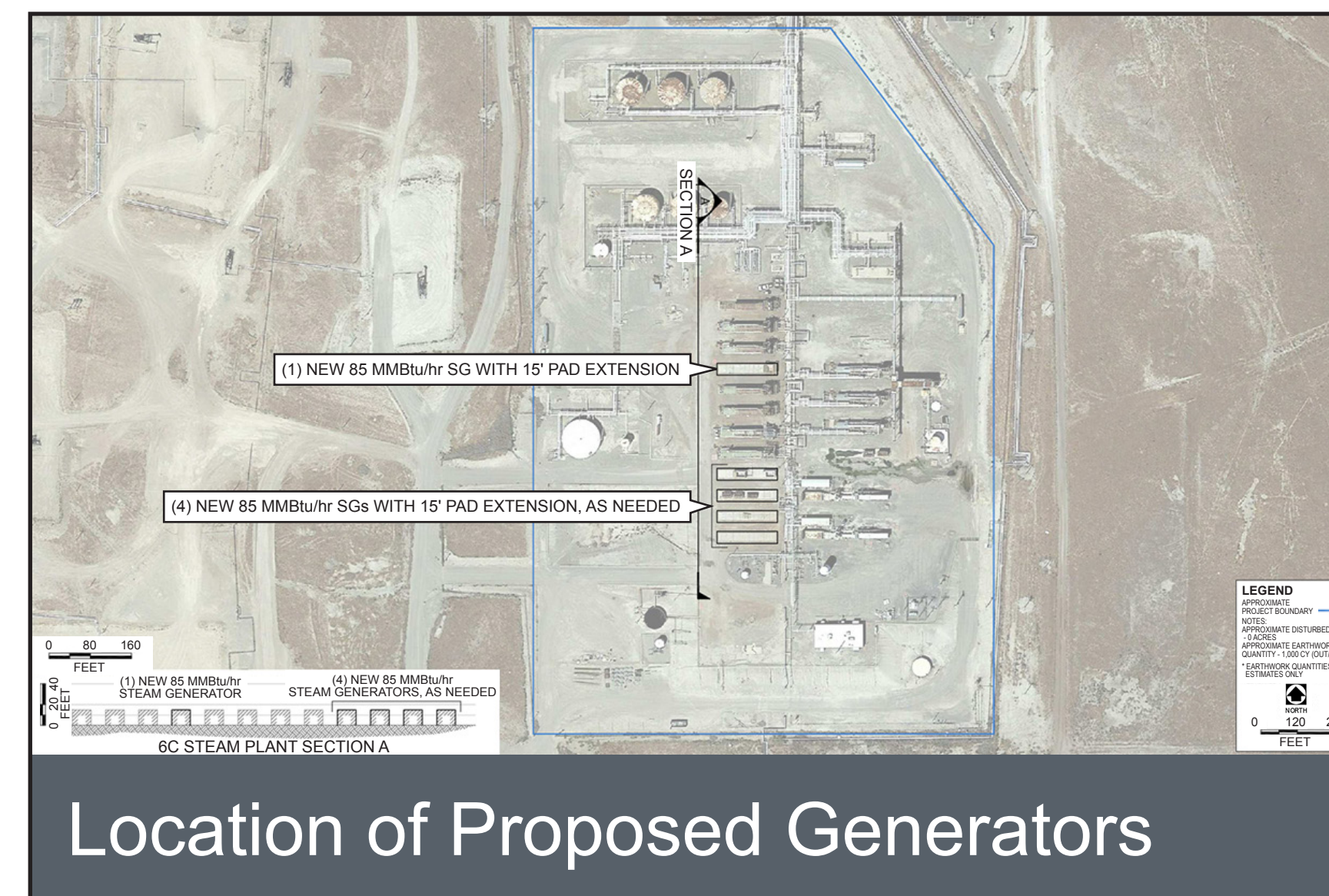
0 1 2  
MILES NORTH

Aerial Image: Esri Imagery 2016  
60567501 SAC GIS 001 6/18

# Project Overview – Chevron Improvements



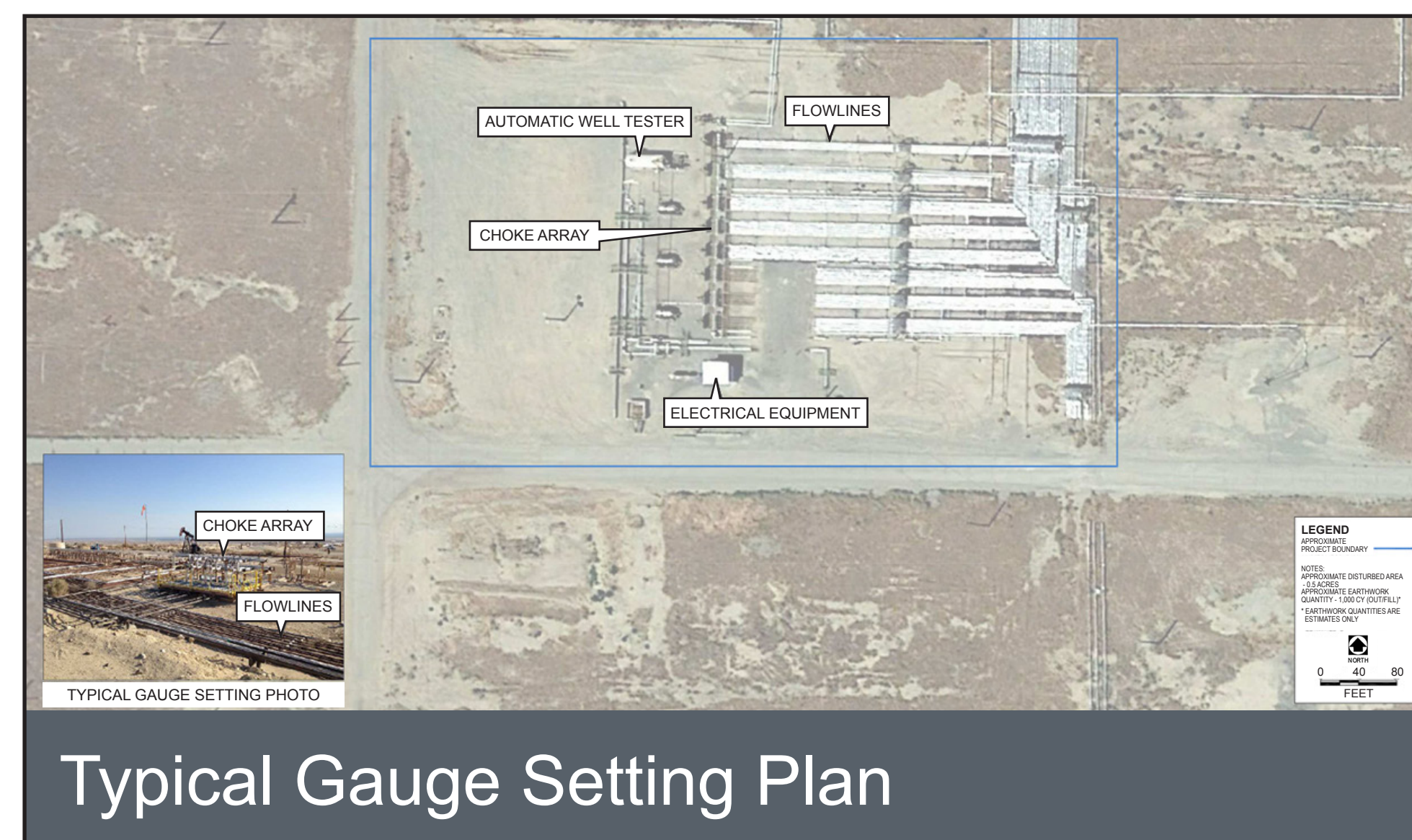
New Facilities in Existing Oil Cleaning Plant



Location of Proposed Generators



Typical Injection Well Location



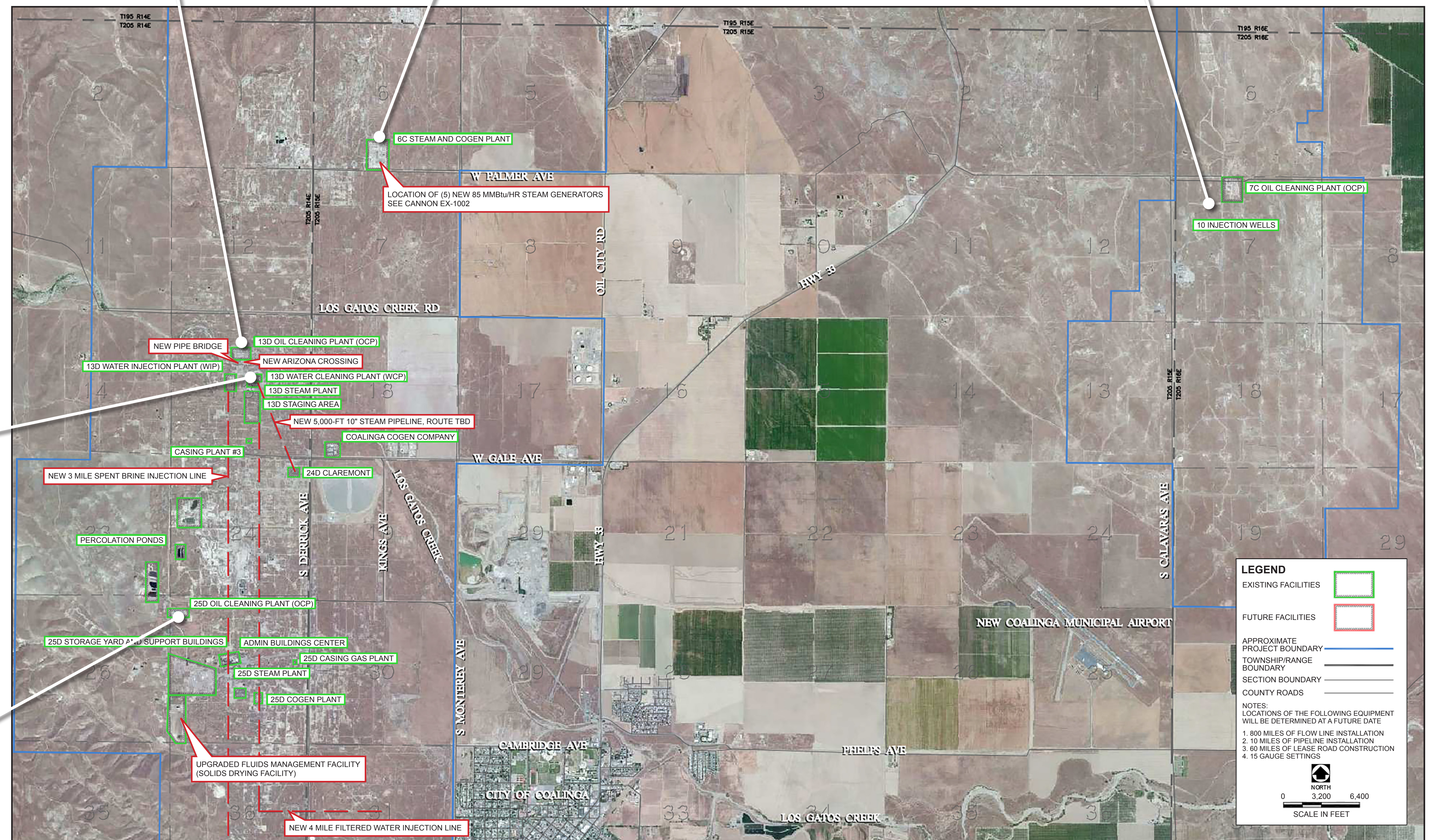
Typical Gauge Setting Plan



Water Cleaning Plant Plan



25D Oil Cleaning Plant Plan



**LEGEND**

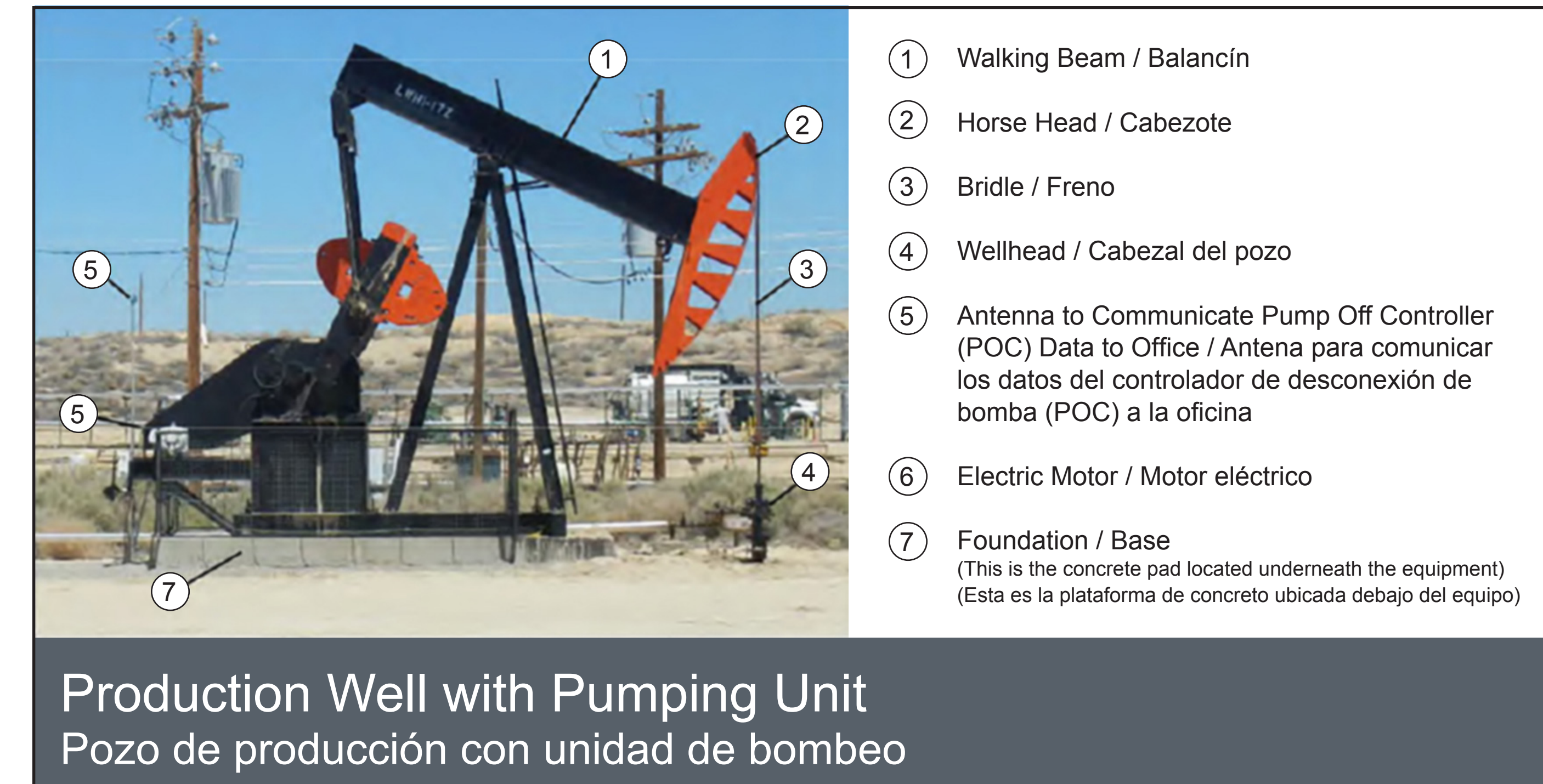
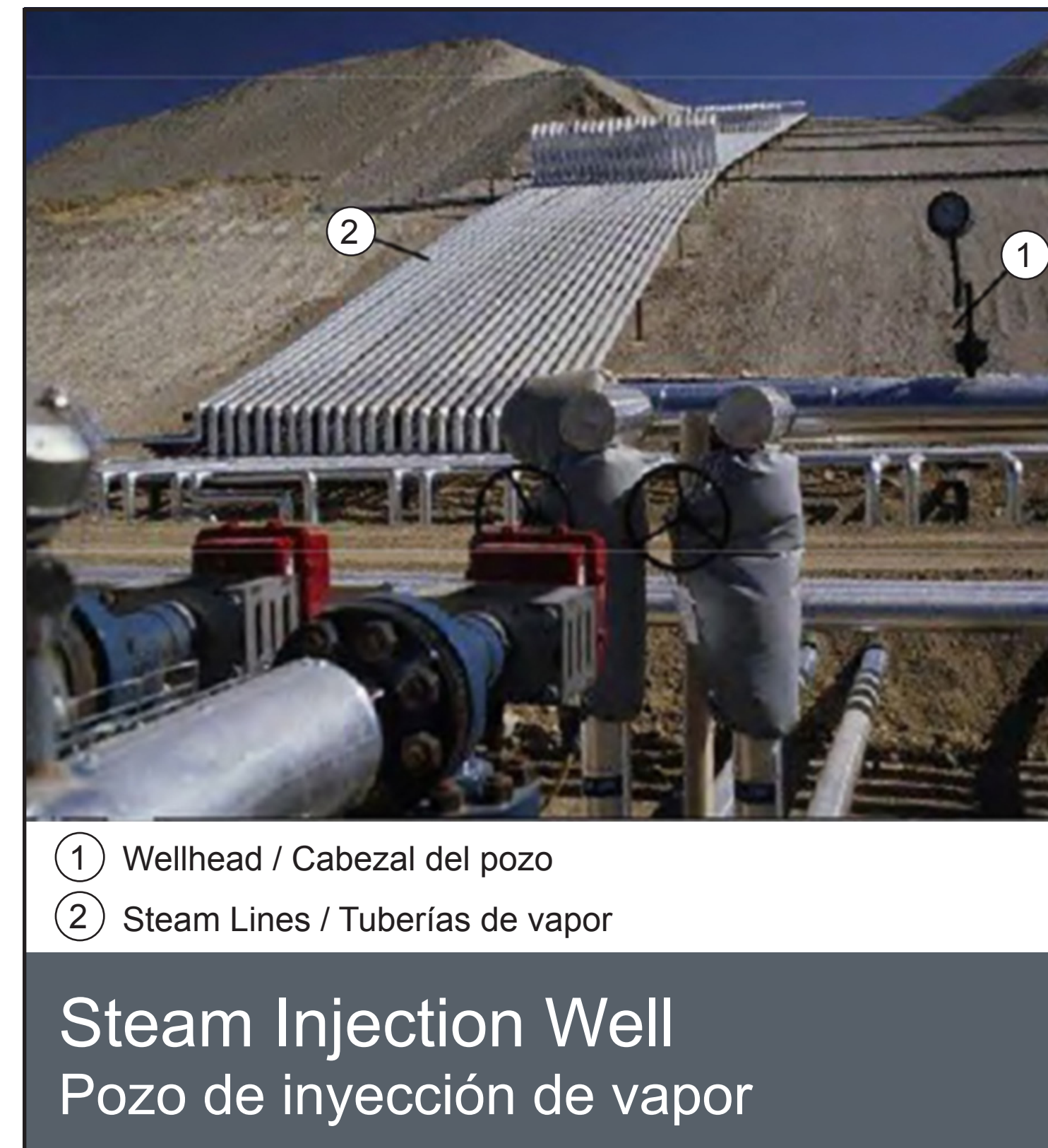
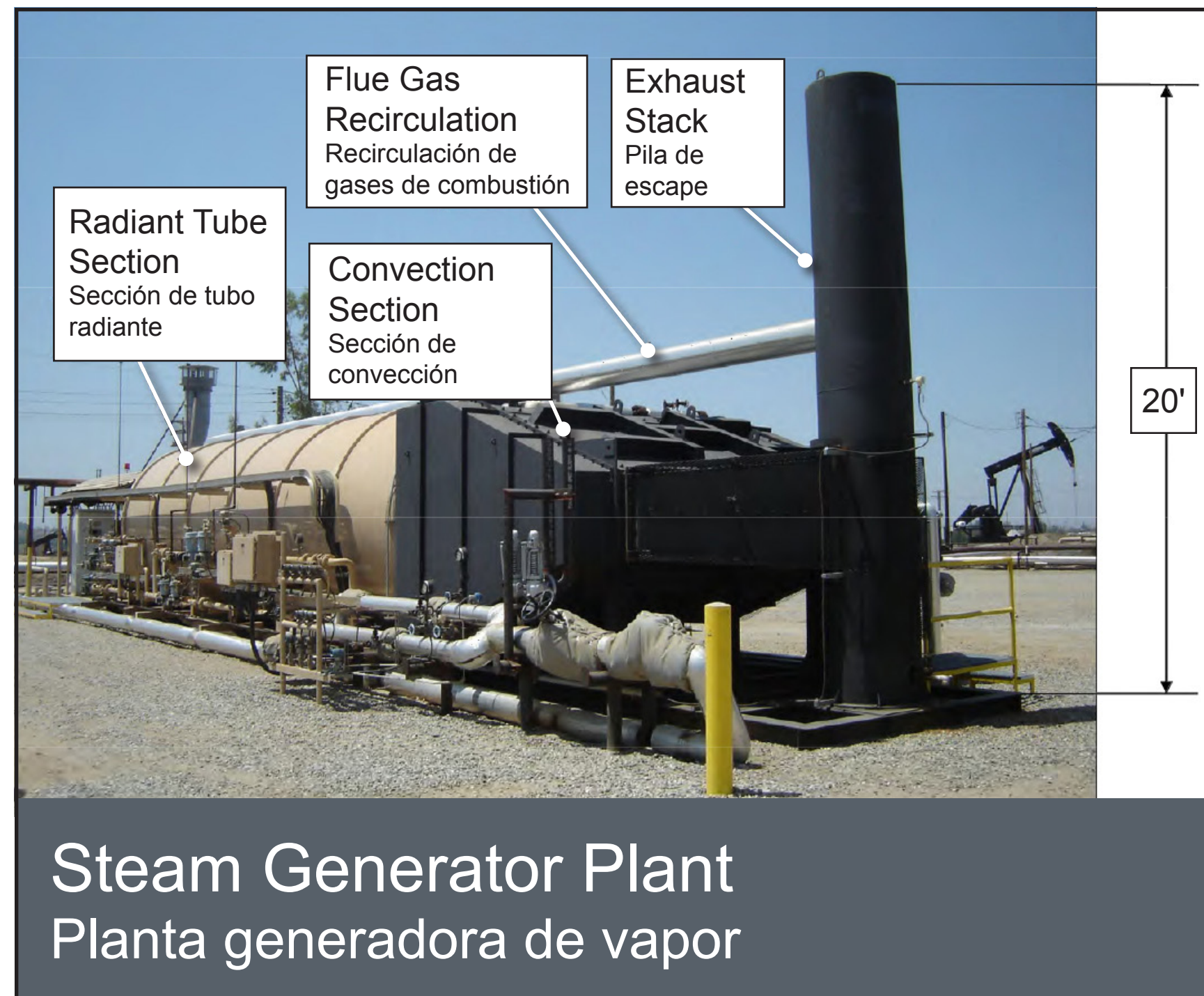
- EXISTING FACILITIES
- FUTURE FACILITIES
- APPROXIMATE PROJECT BOUNDARY
- TOWNSHIP/RANGE BOUNDARY
- SECTION BOUNDARY
- COUNTY ROADS

NOTES:  
 LOCATIONS OF THE FOLLOWING EQUIPMENT WILL BE DETERMINED AT A FUTURE DATE:  
 1. 800 MILES OF FLOW LINE INSTALLATION  
 2. 10 MILES OF PIPELINE INSTALLATION  
 3. 60 MILES OF LEASE ROAD CONSTRUCTION  
 4. 15 GAUGE SETTINGS

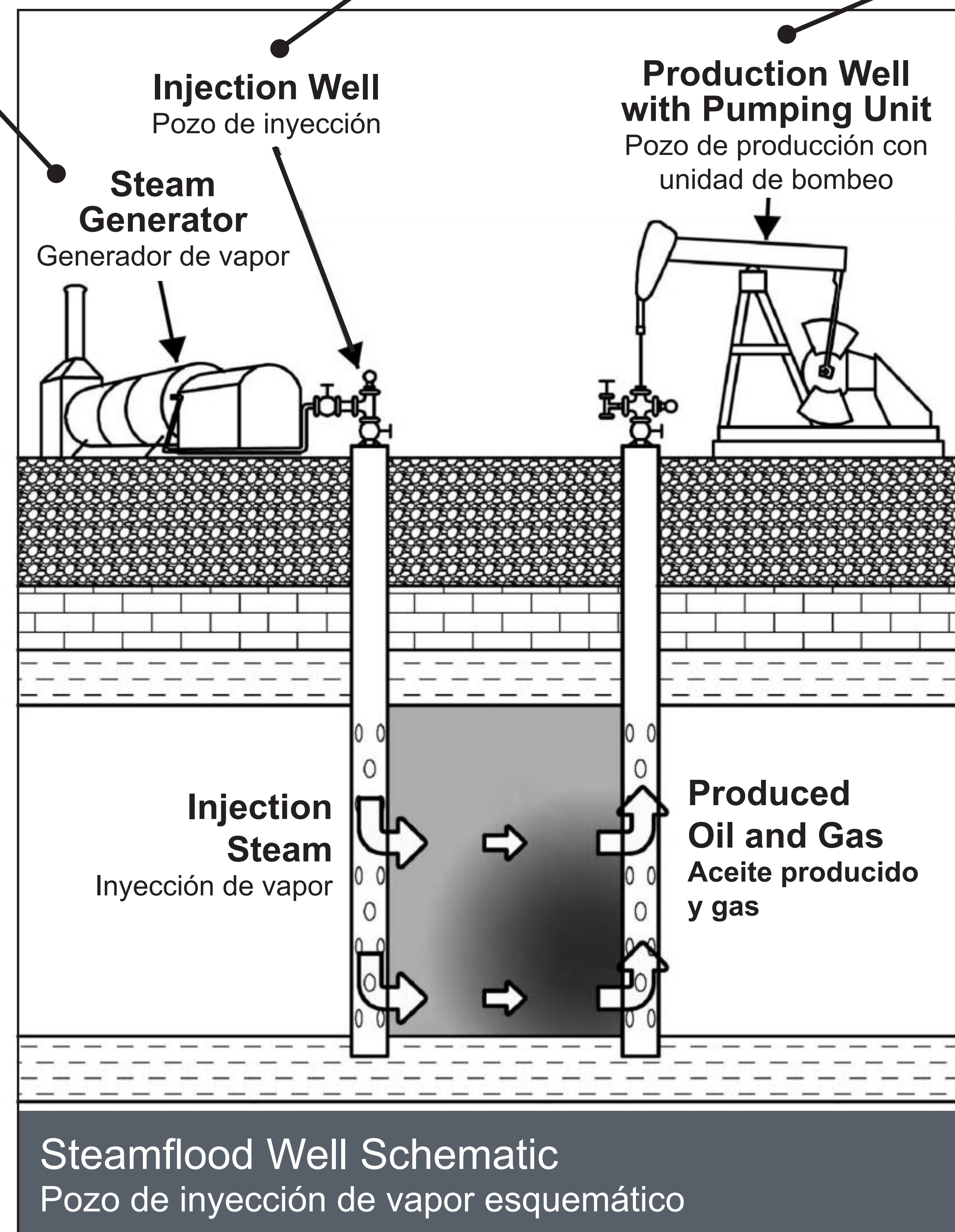
SCALE IN FEET

# Typical Oil Steam Extraction Process

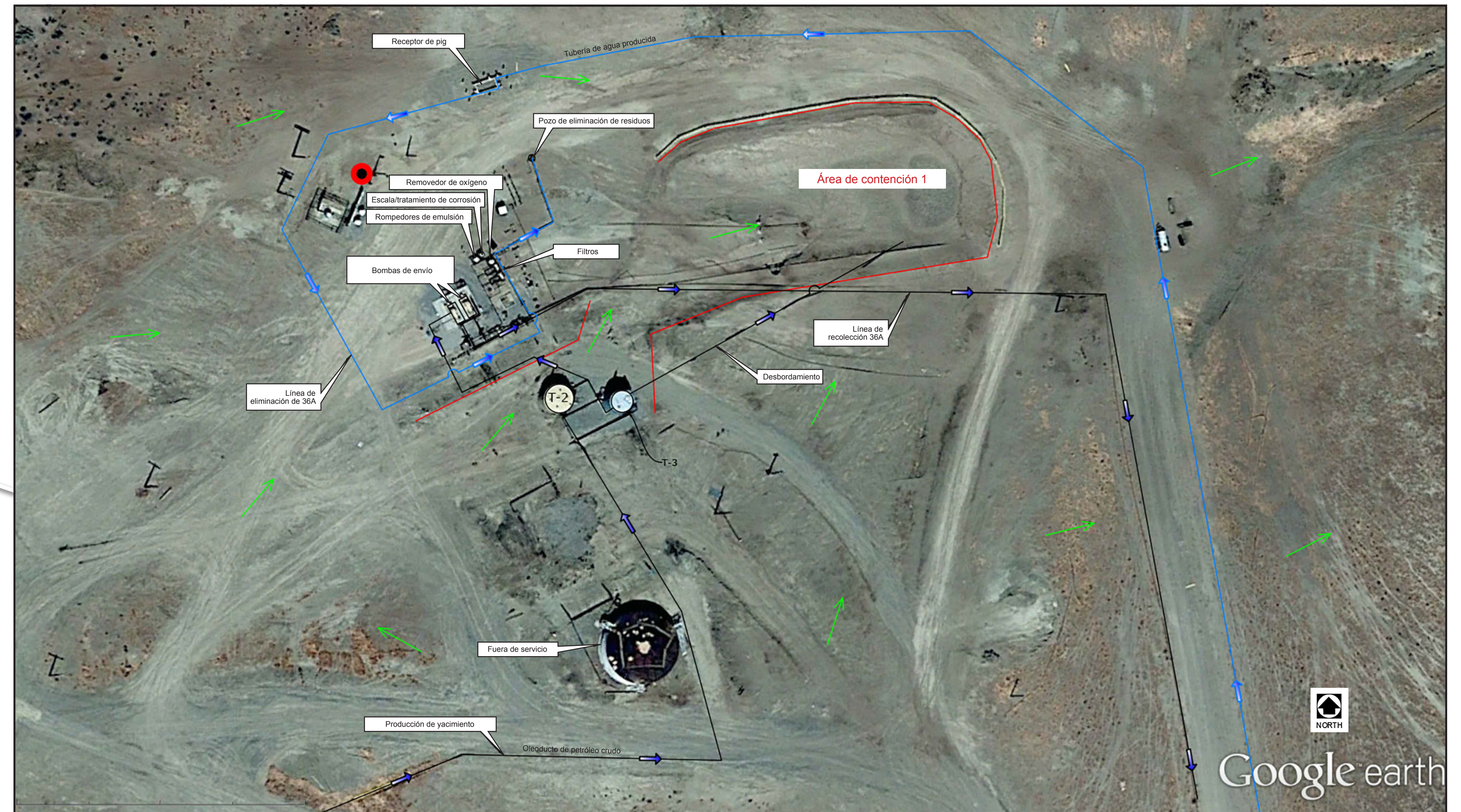
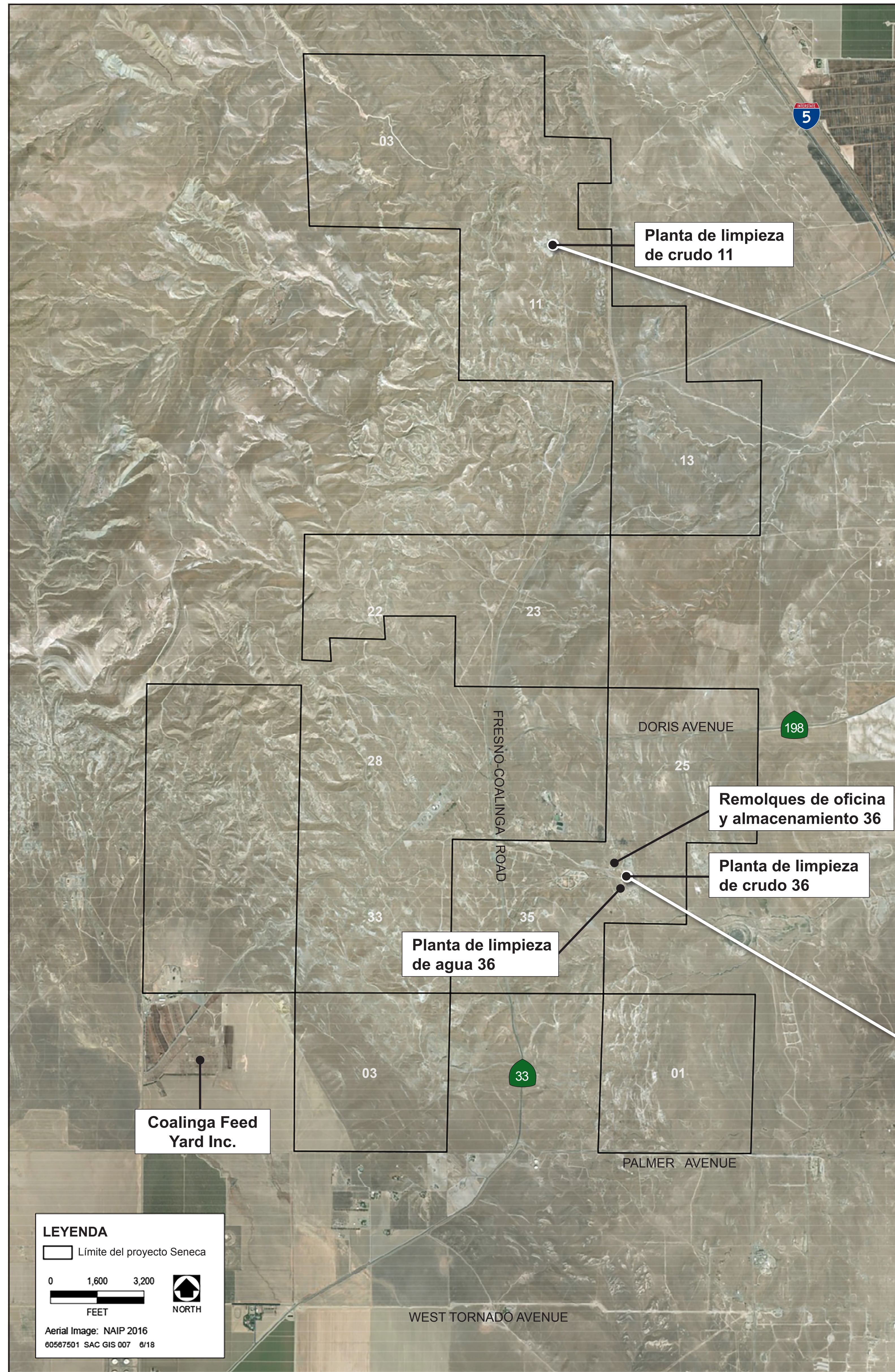
Procedimiento típico de extracción de crudo mediante inyección de vapor



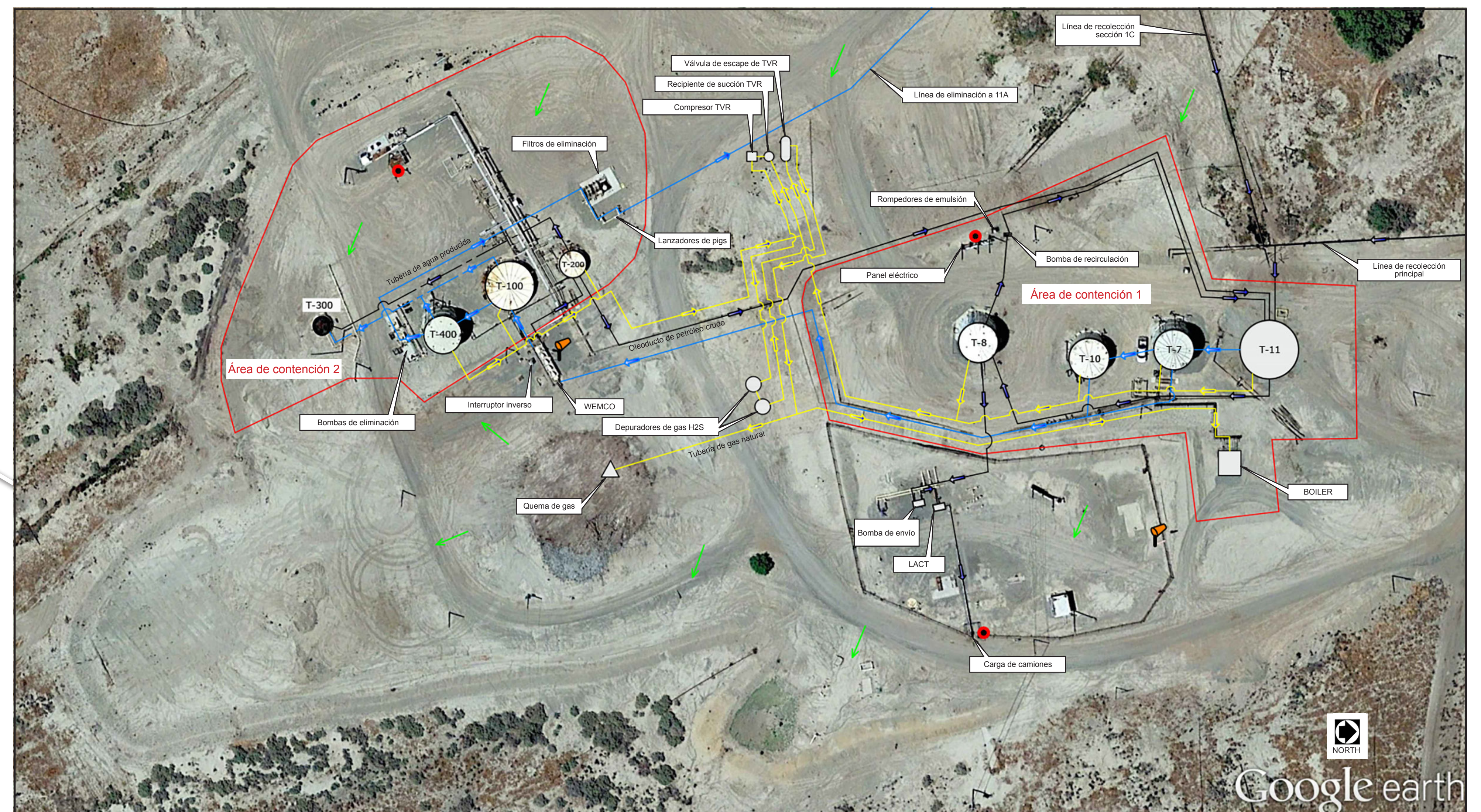
- ① Walking Beam / Balancín
- ② Horse Head / Cabezote
- ③ Bridle / Freno
- ④ Wellhead / Cabezal del pozo
- ⑤ Antenna to Communicate Pump Off Controller (POC) Data to Office / Antena para comunicar los datos del controlador de desconexión de bomba (POC) a la oficina
- ⑥ Electric Motor / Motor eléctrico
- ⑦ Foundation / Base  
(This is the concrete pad located underneath the equipment)  
(Esta es la plataforma de concreto ubicada debajo del equipo)



# Mejoras del sitio Seneca



Diseño de planta de limpieza de crudo 11



Diseño de planta de limpieza de crudo 36A