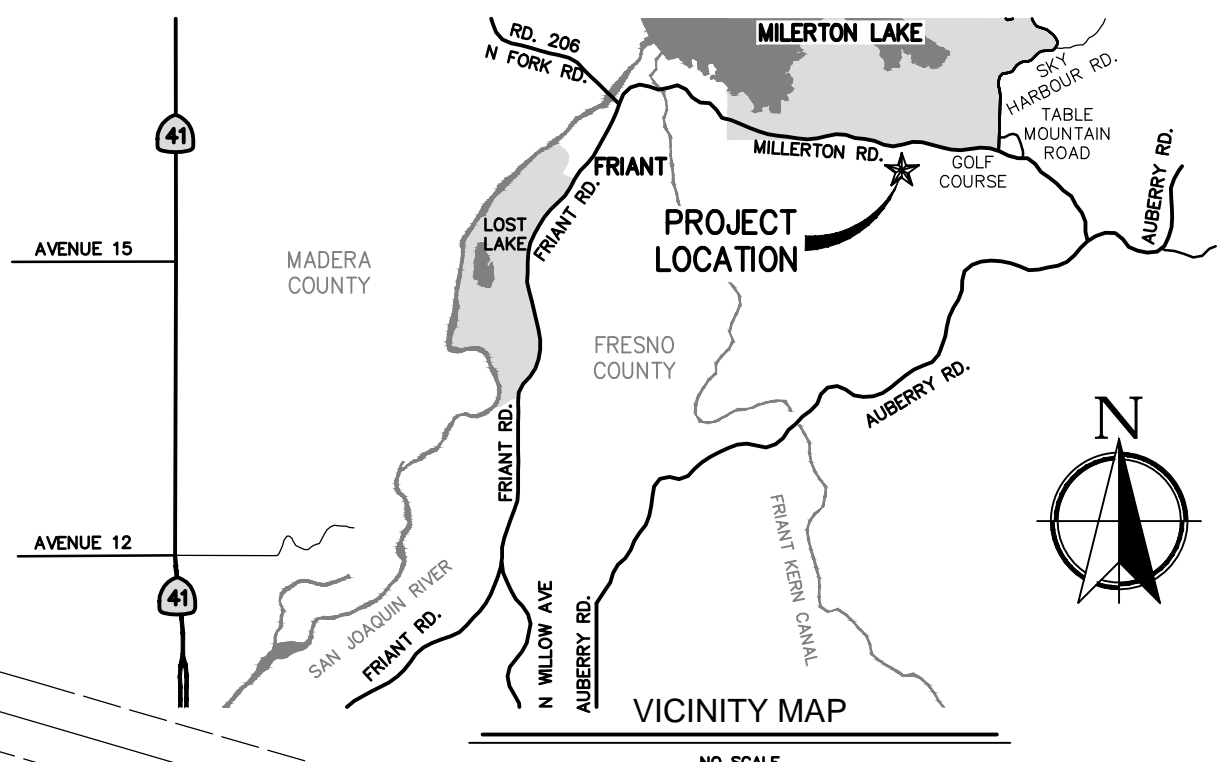


# SUBDIVISION MAP OF TRACT NO. 4968 IN THE COUNTY OF FRESNO, STATE OF CALIFORNIA

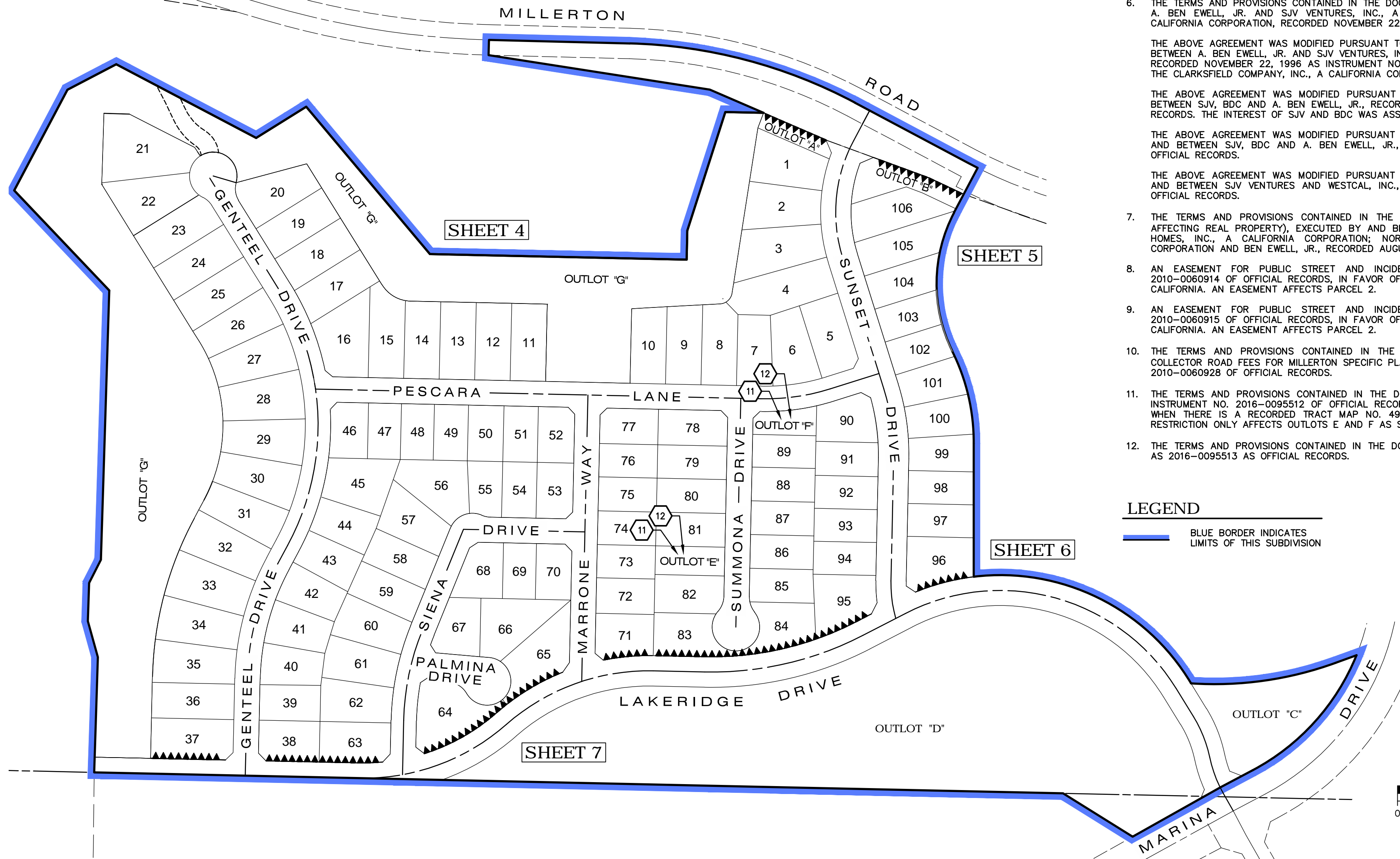


### OUTLOT DESIGNATIONS

NAME	DESCRIPTION	AREA (AC)
OUTLOT "A"	LANDSCAPE	0.11
OUTLOT "B"	LANDSCAPE	0.24
OUTLOT "C"	OPEN SPACE: WET LANDS AND CREEK	0.82
OUTLOT "D"	OPEN SPACE: WET LANDS, CREEK AND BASIN	8.04
OUTLOT "E"	CULTURAL PRESERVE	0.18
OUTLOT "F"	CULTURAL PRESERVE	0.14
OUTLOT "G"	SLOPE AREAS	8.81

### THIS PROPERTY IS SUBJECT TO THE FOLLOWING CONDITIONS XXX

1. RIGHTS, RIGHTS OF WAY, RESERVATIONS AND EXCEPTIONS IN THE PATENT RECORDED SEPTEMBER 16, 1892 IN BOOK Q, PAGE 5 AND NOVEMBER 16, 1892 IN BOOK S, PAGE 317, BOTH OF PATENTS.
2. AN EASEMENT FOR POLES AND WIRES FOR A TELEPHONE LINE AND INCIDENTAL PURPOSES, RECORDED JULY 30, 1907 IN BOOK 382 OF DEEDS, PAGE 82, IN FAVOR OF SAN JOAQUIN LIGHT & POWER CORPORATION. THE LOCATION OF THE EASEMENT CANNOT BE DETERMINED FROM RECORD INFORMATION.
3. AN EASEMENT FOR PUBLIC UTILITIES WITH THE RIGHT OF INGRESS AND EGRESS AND INCIDENTAL PURPOSES, RECORDED AUGUST 22, 1945 AS INSTRUMENT NO. 32818 OF OFFICIAL RECORDS, IN FAVOR OF PACIFIC GAS & ELECTRIC COMPANY. THE LOCATION OF THE EASEMENT CANNOT BE DETERMINED FROM RECORD INFORMATION.
4. AN EASEMENT FOR POLE LINES AND/OR UNDERGROUND CONDUITS AND INCIDENTAL PURPOSES, RECORDED DECEMBER 11, 1945 AS INSTRUMENT NO. 57947 IN BOOK 2315, PAGE 171 OF OFFICIAL RECORDS, IN FAVOR OF PACIFIC GAS & ELECTRIC COMPANY. THE LOCATION OF THE EASEMENT CANNOT BE DETERMINED FROM RECORD INFORMATION.
5. THE TERMS, PROVISIONS AND EASEMENT(S) CONTAINED IN THE DOCUMENT ENTITLED "GRANT OF EASEMENT" RECORDED DECEMBER 11, 1991 AS INSTRUMENT NO. 91-151506 OF OFFICIAL RECORDS.
6. THE TERMS AND PROVISIONS CONTAINED IN THE DOCUMENT ENTITLED CONSULTING AGREEMENT, EXECUTED BY AND BETWEEN A. BEN EWELL, JR. AND SJV VENTURES, INC., A CALIFORNIA CORPORATION AND BDC DEVELOPMENT CORPORATION, A CALIFORNIA CORPORATION, RECORDED NOVEMBER 22, 1996 AS INSTRUMENT NO. 96-156596 OF OFFICIAL RECORDS.  
  
THE ABOVE AGREEMENT WAS MODIFIED PURSUANT TO DOCUMENT ENTITLED, ASSIGNMENT OF AGREEMENT, EXECUTED BY AND BETWEEN A. BEN EWELL, JR. AND SJV VENTURES, INC., A CALIFORNIA CORPORATION AND BDC DEVELOPMENT CORPORATION, RECORDED NOVEMBER 22, 1996 AS INSTRUMENT NO. 96-156595. THE INTEREST OF A. BEN EWELL, JR., WAS ASSIGNED TO THE CLARKSFIELD COMPANY, INC., A CALIFORNIA CORPORATION.  
  
THE ABOVE AGREEMENT WAS MODIFIED PURSUANT TO DOCUMENT ENTITLED, CONSULTING AGREEMENT, EXECUTED BY AND BETWEEN SJV, BDC AND A. BEN EWELL, JR., RECORDED NOVEMBER 22, 1996 AS INSTRUMENT NO. 96-156598 OF OFFICIAL RECORDS. THE INTEREST OF SJV AND BDC WAS ASSIGNED TO WESTCAL, INC., A CALIFORNIA CORPORATION.  
  
THE ABOVE AGREEMENT WAS MODIFIED PURSUANT TO DOCUMENT ENTITLED, MEMORANDUM OF AGREEMENT, EXECUTED BY AND BETWEEN SJV, BDC AND A. BEN EWELL, JR., RECORDED NOVEMBER 22, 1996 AS INSTRUMENT NO. 96-156599 OF OFFICIAL RECORDS.  
  
THE ABOVE AGREEMENT WAS MODIFIED PURSUANT TO DOCUMENT ENTITLED, MEMORANDUM OF AGREEMENT, EXECUTED BY AND BETWEEN SJV VENTURES AND WESTCAL, INC., RECORDED MARCH 22, 2012 AS INSTRUMENT NO. 2012-0040927 OF OFFICIAL RECORDS.
7. THE TERMS AND PROVISIONS CONTAINED IN THE DOCUMENT ENTITLED SETTLEMENT AGREEMENT (INCLUDING COVENANTS AFFECTING REAL PROPERTY), EXECUTED BY AND BETWEEN SUNRISE CREST, INC., A CALIFORNIA CORPORATION; GRANVILLE HOMES, INC., A CALIFORNIA CORPORATION; NORMAN CHRISTENSEN; NORA CHRISTENSEN; JPJ, INC., A CALIFORNIA CORPORATION AND BEN EWELL, JR., RECORDED AUGUST 1, 2007 AS INSTRUMENT NO. 07-146467 OF OFFICIAL RECORDS.
8. AN EASEMENT FOR PUBLIC STREET AND INCIDENTAL PURPOSES, RECORDED MAY 12, 2010 AS INSTRUMENT NO. 2010-0060914 OF OFFICIAL RECORDS, IN FAVOR OF THE COUNTY OF FRESNO, A POLITICAL SUBDIVISION OF THE STATE OF CALIFORNIA. AN EASEMENT AFFECTS PARCEL 2.
9. AN EASEMENT FOR PUBLIC STREET AND INCIDENTAL PURPOSES, RECORDED MAY 12, 2010 AS INSTRUMENT NO. 2010-0060915 OF OFFICIAL RECORDS, IN FAVOR OF THE COUNTY OF FRESNO, A POLITICAL SUBDIVISION OF THE STATE OF CALIFORNIA. AN EASEMENT AFFECTS PARCEL 2.
10. THE TERMS AND PROVISIONS CONTAINED IN THE DOCUMENT ENTITLED "COVENANT AND AGREEMENT REGARDING MINOR COLLECTOR ROAD FEES FOR MILLERTON SPECIFIC PLAN DEVELOPMENT" RECORDED MAY 12, 2010 AS INSTRUMENT NO. 2010-0060928 OF OFFICIAL RECORDS.
11. THE TERMS AND PROVISIONS CONTAINED IN THE DOCUMENT ENTITLED "DEED RESTRICTION" RECORDED JULY 25, 2016 AS INSTRUMENT NO. 2016-0095512 OF OFFICIAL RECORDS. A RECITAL ON THE ABOVE REFERENCED DOCUMENT STATES THAT WHEN THERE IS A RECORDED TRACT MAP NO. 4968, A NEW DEED RESTRICTION WILL BE RECORDED THAT SHOWS THIS RESTRICTION ONLY AFFECTS OUTLOTS E AND F AS SHOWN ON THE FUTURE RECORDED MAP.
12. THE TERMS AND PROVISIONS CONTAINED IN THE DOCUMENT ENTITLED "RESTRICTIVE COVENANT" RECORDED JULY 25, 2016 AS 2016-0095513 AS OFFICIAL RECORDS.



### LEGEND

BLUE BORDER INDICATES LIMITS OF THIS SUBDIVISION

