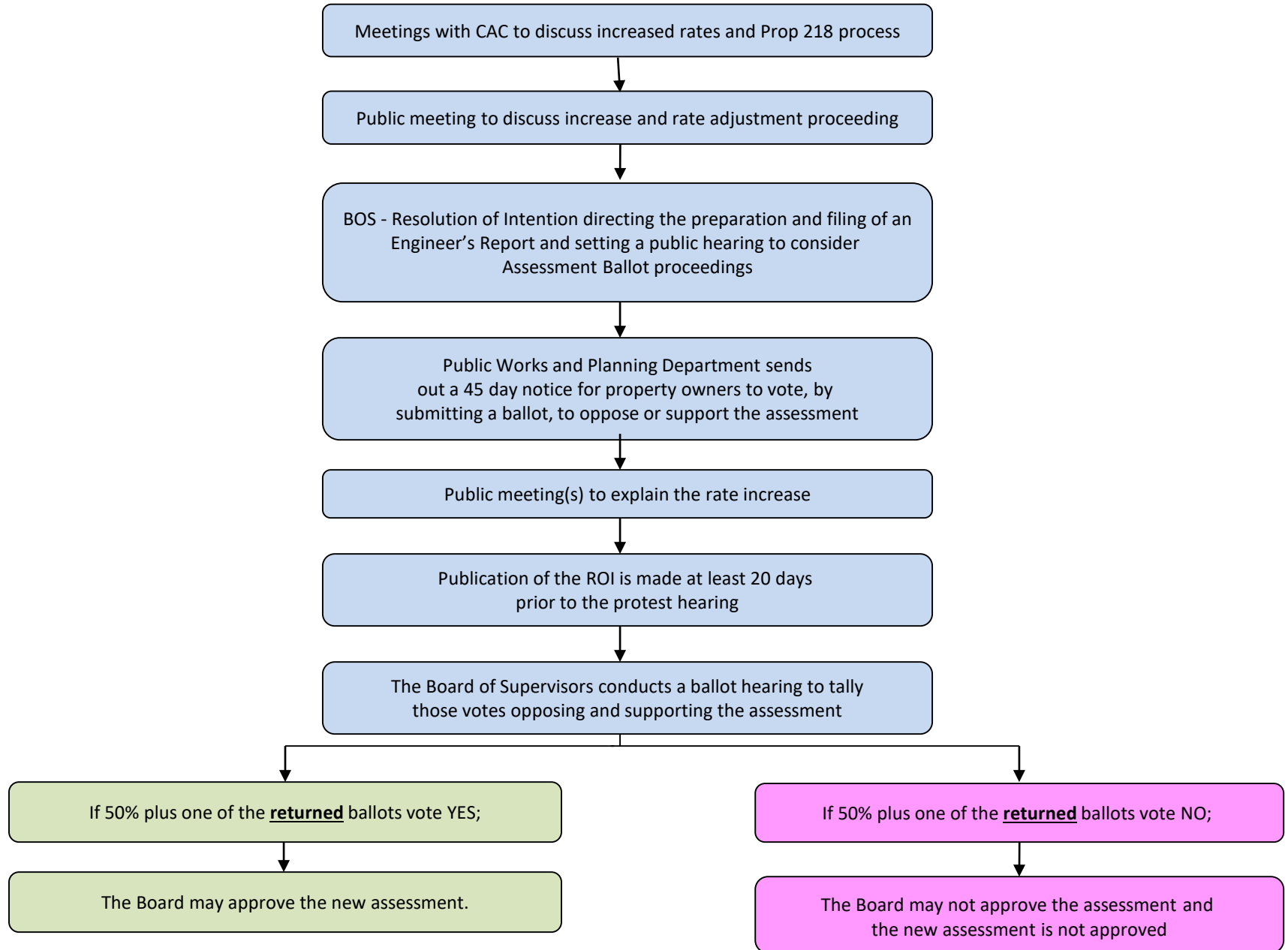


Rate Adjustment Process



WATER & SEWER RATES

	Developed Parcel	Undeveloped Parcel	Motel
Current Rates per Year	\$1,201.96	\$125.52	\$4,567.40
Current Rates per Month	100.16	10.46	380.62
Rate Alternative A per Year	\$ 2,453.31	\$138.72	\$ 9,322.52
Rate Alternative A per Month	204.44	11.56	776.88