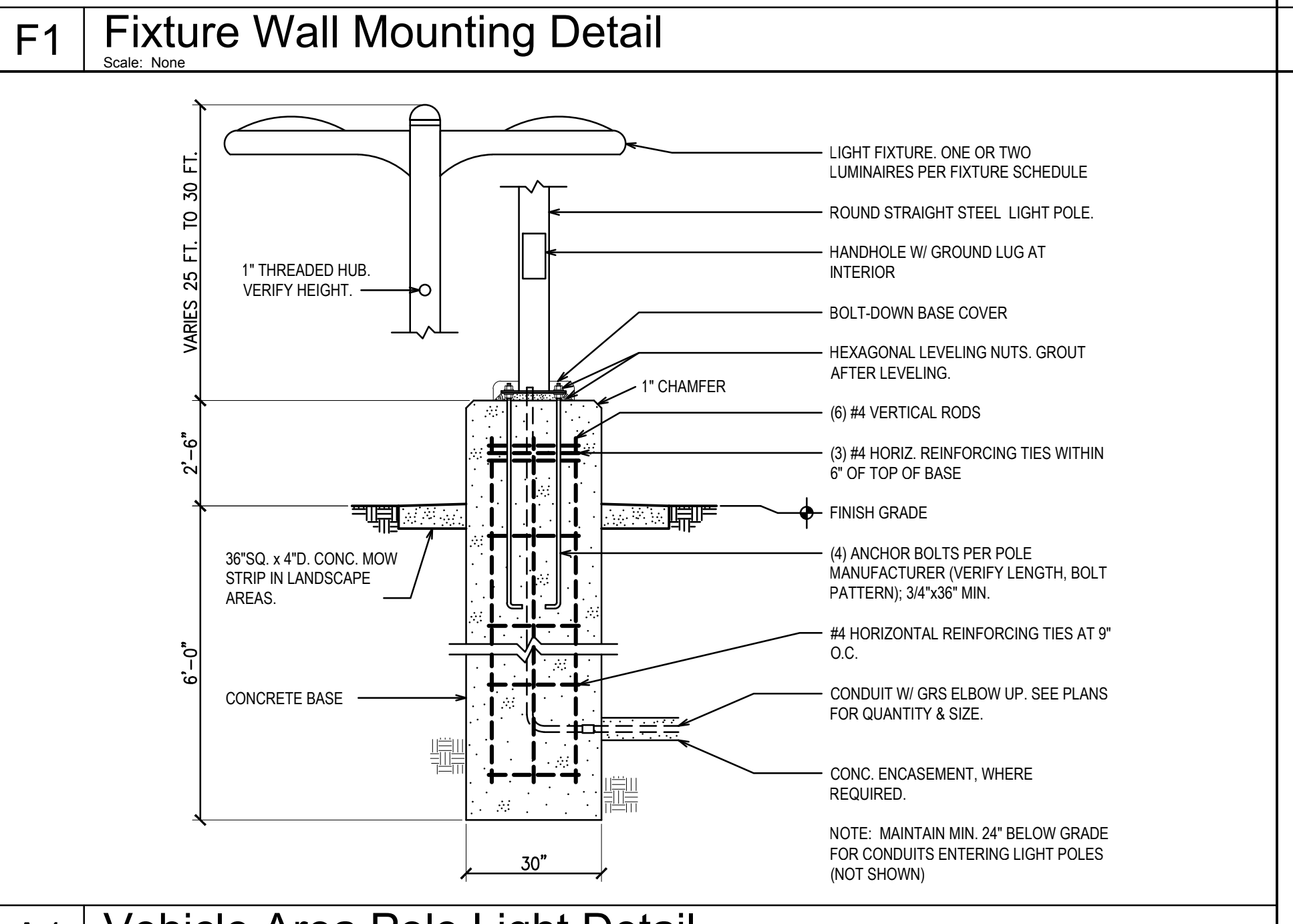
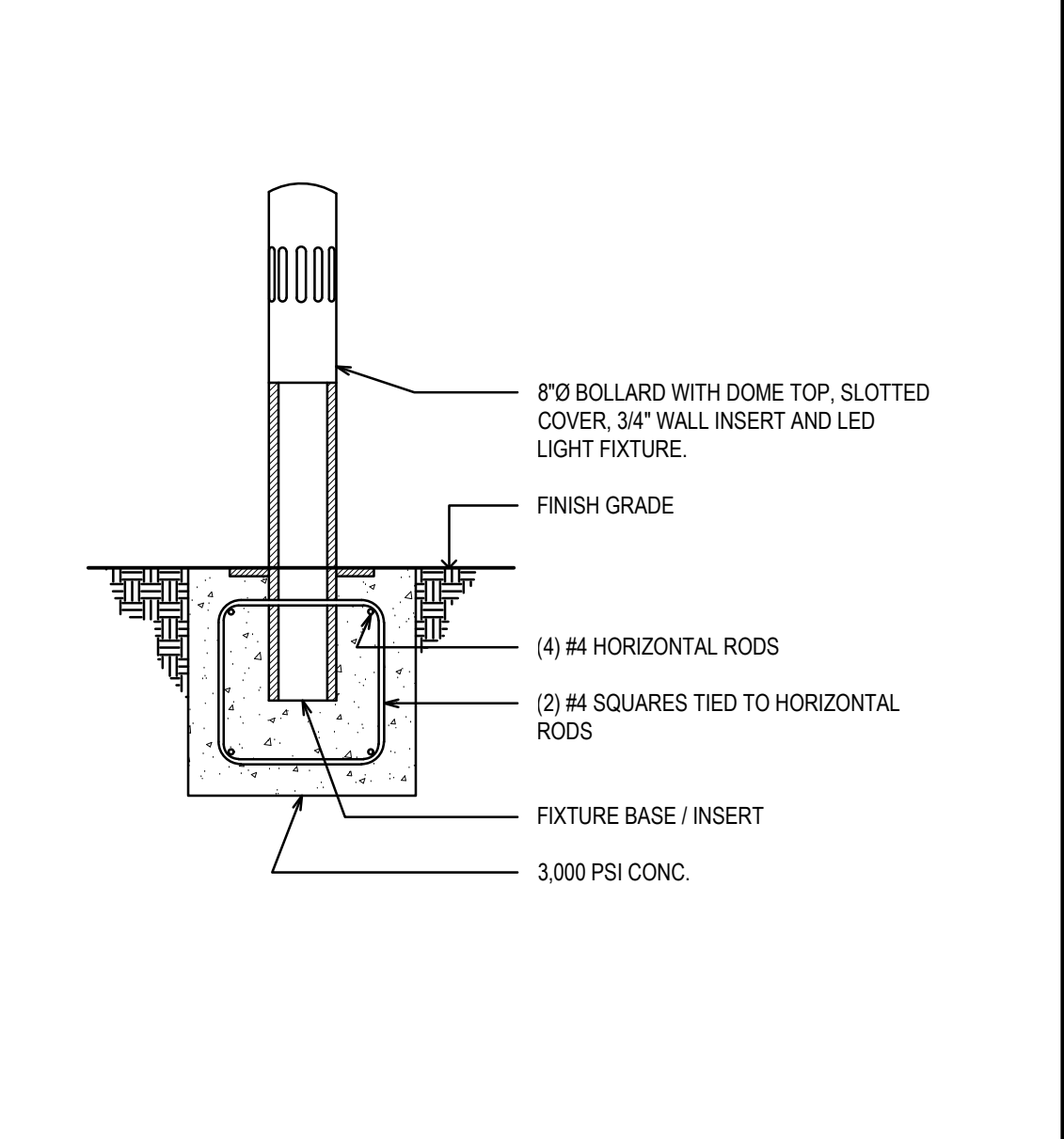
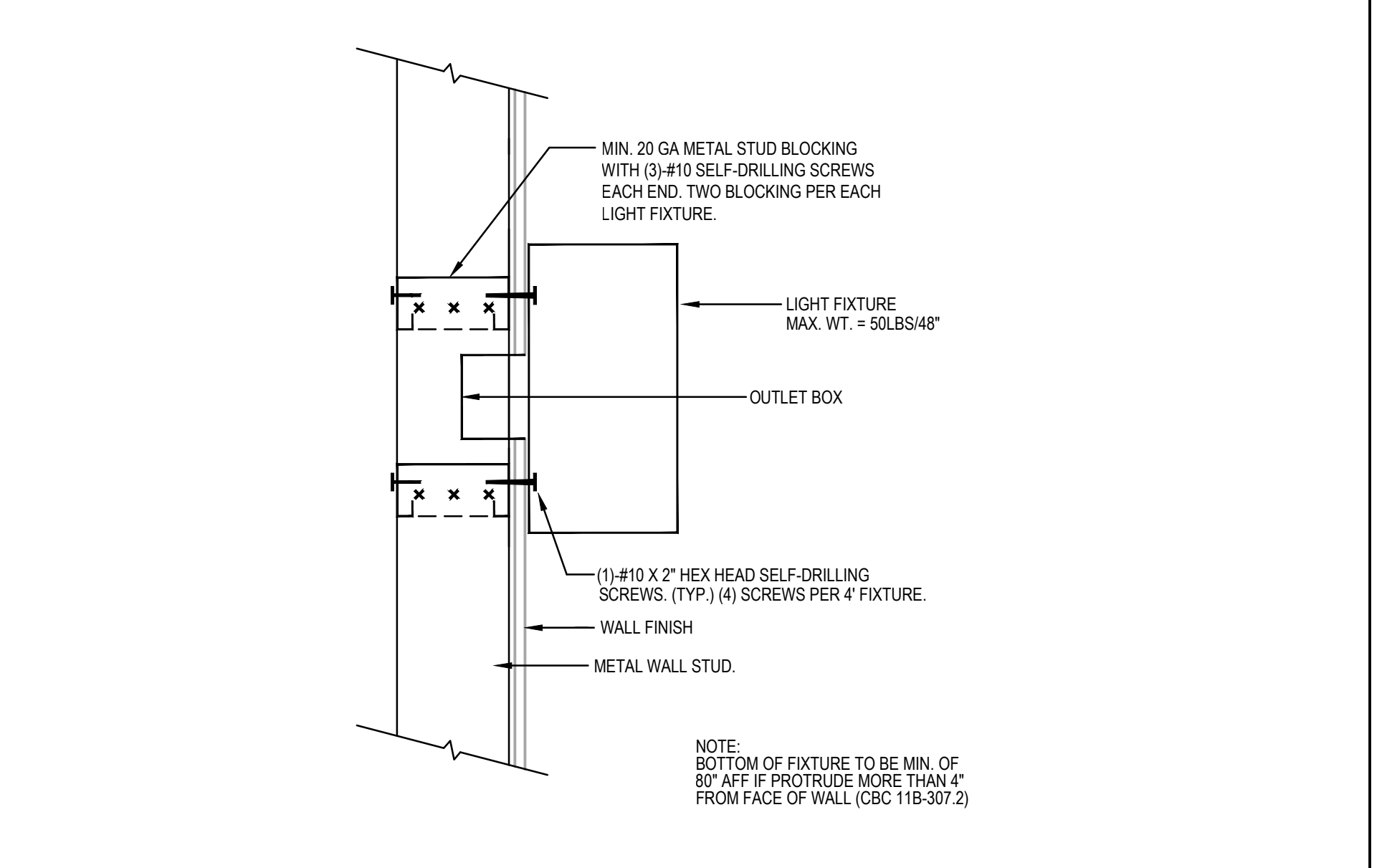


TYPE	MFG'R	MODEL	LAMPS	WATTS	VOLTS	MOUNTING	DETAIL	NOTES
A	LITHONIA	2FS12 48L MVOLT E21 LP835 N100	LED	40.5	UNV	RECESSED	N8/E1.1	
AE	LITHONIA	2FS12 48L MVOLT E21 LP835 N100EMG	LED	40.5	UNV	RECESSED	N8/E1.1	CONNECTED TO EM. LIGHTING PANEL
B20	LITHONIA	GRD LLP 20FT MSL8 80CRI 35K ID1500LMF 80/20 MINI1 ZT SCT F1/72A C110 DU	LED	255.0	UNV	PENDANT	J1/E1.1	
B20E	LITHONIA	GRD LLP 20FT MSL8 80CRI 35K ID1500LMF 80/20 MINI1 ZT SCT 2EC F1/72A C110 DU	LED	255.0	UNV	PENDANT	J1/E1.1	CONNECTED TO EM. LIGHTING PANEL & EM. POWERPACK
B40	LITHONIA	GRD LLP 40FT MSL8 80CRI 35K ID1500LMF 80/20 MINI1 ZT SCT F1/72A C110 DU	LED	510.0	UNV	PENDANT	J1/E1.1	
B40E	LITHONIA	GRD LLP 40FT MSL8 80CRI 35K ID1500LMF 80/20 MINI1 ZT SCT 3EC F1/72A C110 DU	LED	510.0	UNV	PENDANT	J1/E1.1	CONNECTED TO EM. LIGHTING PANEL & EM. POWERPACK
B68	LITHONIA	GRD LLP 68FT MSL8 80CRI 35K ID1500LMF 80/20 MINI1 ZT SCT F1/72A C110 DU	LED	867.0	UNV	PENDANT	J1/E1.1	
B68E	LITHONIA	GRD LLP 68FT MSL8 80CRI 35K ID1500LMF 80/20 MINI1 ZT SCT 4EC F1/72A C110 DU	LED	867.0	UNV	PENDANT	J1/E1.1	CONNECTED TO EM. LIGHTING PANEL & EM. POWERPACK
C8	LITHONIA	BLWP8 60LHE ADSM E21 LP835	LED	50.0	UNV	SURFACE	J8/E1.1	
D4	LITHONIA	LDN4 35/15 L04R LSS MVOLT E21	LED	17.5	UNV	RECESSED	N/A	
D6	LITHONIA	LDN6 35/25 L06AR LSS MVOLT E21	LED	28.3	UNV	RECESSED	N/A	
D6E	LITHONIA	LDN6 35/25 L06AR LSS MVOLT E21	LED	28.3	UNV	RECESSED	N/A	CONNECTED TO EM. LIGHTING PANEL & EM. POWERPACK
D8	LITHONIA	LDN8 35/50 L08AR LSS MVOLT E21	LED	61.1	UNV	RECESSED	N/A	
D8E	LITHONIA	LDN8 35/50 L08AR LSS MVOLT E21	LED	61.1	UNV	RECESSED	N/A	CONNECTED TO EM. LIGHTING PANEL & EM. POWERPACK
F5	MARK LIGHTING	SL4L LOP 5FT RLP WFL 90CRI 35K 800LMF MINI1 277 ZT DPL	LED	40.0	277	RECESSED	N/A	VERIFY OAL AFTER FRAMING AND SEND TO FACTORY
F6	MARK LIGHTING	SL4L LOP 6FT RLP WFL 90CRI 35K 800LMF MINI1 277 ZT DPL	LED	48.0	277	RECESSED	N/A	VERIFY OAL AFTER FRAMING AND SEND TO FACTORY
F7	MARK LIGHTING	SL4L LOP 7FT RLP WFL 90CRI 35K 800LMF MINI1 277 ZT DPL	LED	56.0	277	RECESSED	N/A	VERIFY OAL AFTER FRAMING AND SEND TO FACTORY
F9	MARK LIGHTING	SL4L LOP 9FT RLP WFL 90CRI 35K 800LMF MINI1 277 ZT DPL	LED	72.0	277	RECESSED	N/A	VERIFY OAL AFTER FRAMING AND SEND TO FACTORY
F11	MARK LIGHTING	SL4L LOP 11FT RLP WFL 90CRI 35K 800LMF MINI1 277 ZT DPL	LED	88.0	277	RECESSED	N/A	VERIFY OAL AFTER FRAMING AND SEND TO FACTORY
K	LITHONIA	IBG 2FT 8000LM SEF AFL WD MVOLT G210 40K 80CRI NLTAR2 RKOA RPP20D	LED	53.8	UNV	SURFACE	N/A	
KE	LITHONIA	IBG 2FT 8000LM SEF AFL WD MVOLT G210 40K 80CRI NLTAR2 RKOA RPP20DER	LED	53.8	UNV	SURFACE	N/A	CONNECTED TO EM. LIGHTING PANEL
P1E	GOTHAM	EV06VR 40/25 AR PPC MVOLT G210 DNA	LED	24.7	UNV	RECESSED	N/A	CONNECTED TO EM. LIGHTING PANEL & EM. POWERPACK
P2	GOTHAM	EV06VR 40/10 AR PPC MVOLT G210 DNA	LED	9.6	UNV	RECESSED	N/A	
P3E	LUMINAIRE LED	DW1512 10W 4000K 120-277 OP BRZ WET	LED	10.0	UNV	WALL	N/A	CONNECTED TO EM. LIGHTING PANEL & EM. POWERPACK
P4	LITHONIA	DSXW1 LED 20C 1000-40K T3M MVOLT PIRH1FC3V	LED	73.0	UNV	WALL	F1/E1.1	MOUNT AT +20'-0"
S1	LITHONIA	RAD1 LED P5 40K SYM MVOLT RPA DNAXD / RSS 25 4B DM19RAD DNAXD	LED	121.9	UNV	25 FT. RSS POLE	A1/E1.1	PROVIDE 1" THREADED HUB FOR CAMS. VERIFY HEIGHT.
S2	LITHONIA	(2) RAD1 LED P5 40K SYM MVOLT RPA DNAXD / RSS 25 4B DM28RAD DNAXD	LED	243.9	UNV	25 FT. RSS POLE	A1/E1.1	PROVIDE 1" THREADED HUB FOR CAMS. VERIFY HEIGHT.
S3	LITHONIA	RAD1 LED P5 40K ASY MVOLT RPA DNAXD / RSS 25 4B DM19RAD DNAXD	LED	121.9	UNV	25 FT. RSS POLE	A1/E1.1	PROVIDE 1" THREADED HUB FOR CAMS. VERIFY HEIGHT.
S4	LITHONIA	(2) RAD1 LED P3 40K ASY MVOLT RPA DNAXD / RSS 25 4B DM28RAD DNAXD	LED	107.2	UNV	25 FT. RSS POLE	A1/E1.1	PROVIDE 1" THREADED HUB FOR CAMS. VERIFY HEIGHT.
S5	LITHONIA	(2) RSX2 LED P3 40K RS MVOLT RPA DNAXD / RSS 30FT 5B DM28AS DNAXD	LED	300.0	UNV	30 FT. RSS POLE	A1/E1.1	PROVIDE 1" THREADED HUB FOR CAMS. VERIFY HEIGHT.
S6	LITHONIA	RSX2 LED P2 40K R3 MVOLT RPA DNAXD / RSS 30FT 5B DM19AS DNAXD	LED	114.1	UNV	30 FT. RSS POLE	A1/E1.1	PROVIDE 1" THREADED HUB FOR CAMS. VERIFY HEIGHT.
S7	LITHONIA	CNY LED P0 40K MVOLT DDB	LED	27.0	UNV	SURFACE	N/A	
S8	HYDREL	M9A2DC 8 LED P3 35K MVOLT WFL FLC205R 348 LSF LDM1 BZ	LED	27.0	UNV	IN-GRADE	N/A	
S9	CALPIPE SECURITY	42"H, 3/4" WALL INSERT, DOME, SLOTTED, PARACLINE, LED, 277V	LED	23.0	277	BOLLARD	F6/E1.1	
X	LITHONIA	LE 5 1 G	LED	1.3	UNV	UNIVERSAL	N/A	SEE PLANS FOR CHEVRONS, NUMBER OF FACES
X2	LITHONIA	LE 5 2 G	LED	2.6	UNV	UNIVERSAL	N/A	SEE PLANS FOR CHEVRONS, NUMBER OF FACES

J1 Pendant Fixture Mounting Detail
Scale: None

J8 Fixture Surface Mounting Detail
Scale: None

J12 Fixture Schedule
Scale: None



A1 Vehicle Area Pole Light Detail
Scale: None

Hardin-Davidson Engineering
356 Pollasky Ave., Suite 200
Clovis, CA 93612
559-323-4995 tel
www.hardin-davidson.com

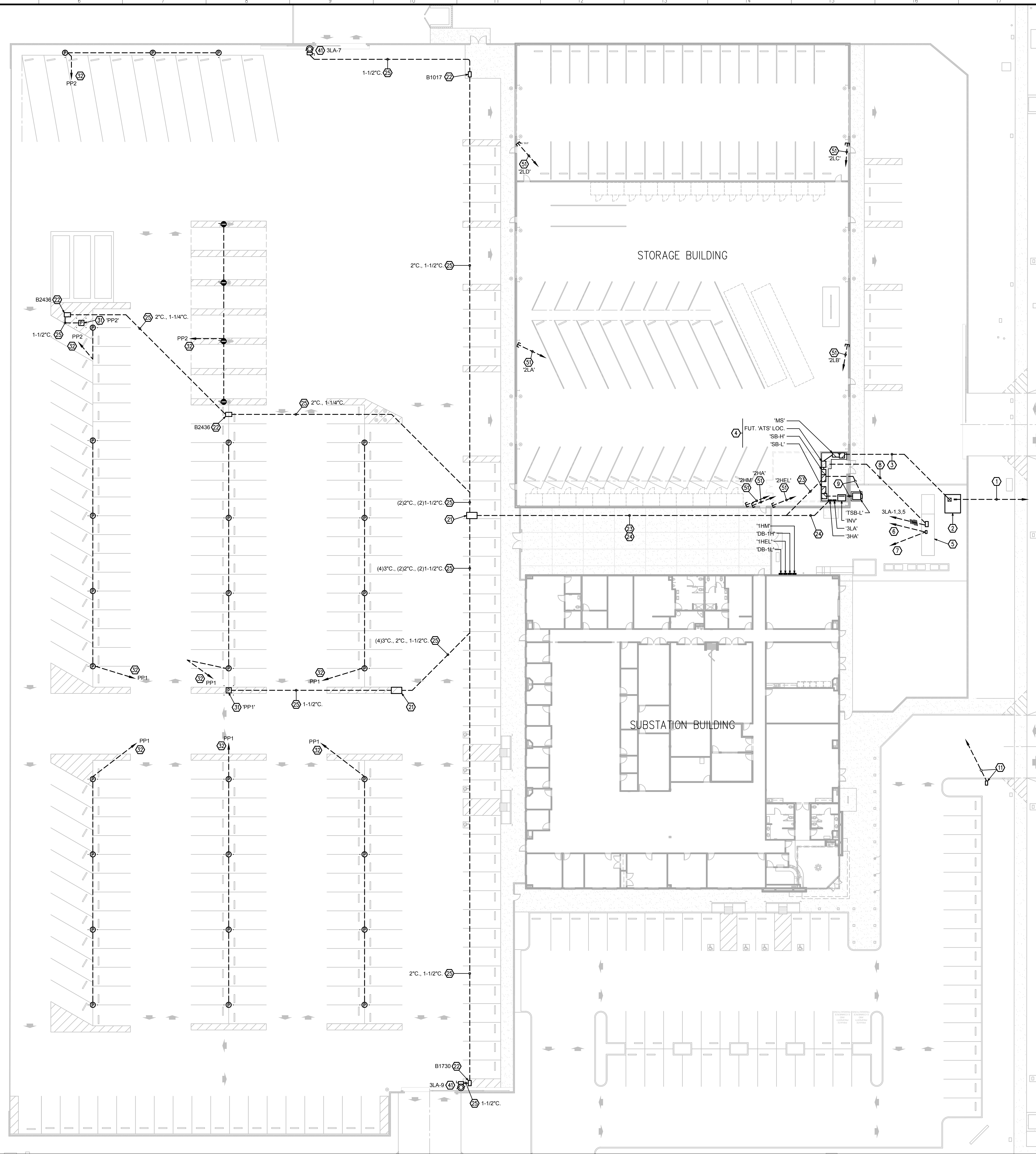
ARCHITECT:
Neil Roger Davidson, A.I.A., Architect
California Licensed Architect No. C-27818
Ren. 10-31-2021
Fresno County Department of Public Works
Capital Projects
2220 Tulare Street, Eighth Floor
Fresno, California 93721
Telephone: (559) 604-4477
E-mail: ndavidson@co.fresno.ca.us

Project:
Sheriff Area 2 Sub-Station
1129 N. Armstrong Ave., Fresno, CA
APN: 310-133-04-05, and -06
ISSUE DATE: 6.16.2020
PROJECT NO: 19074/19003
FILE NAME: 19074 - Elec_Split Bid Set_Add2

Sheet Content:
LIGHT FIXTURE SCHEDULE AND DETAILS

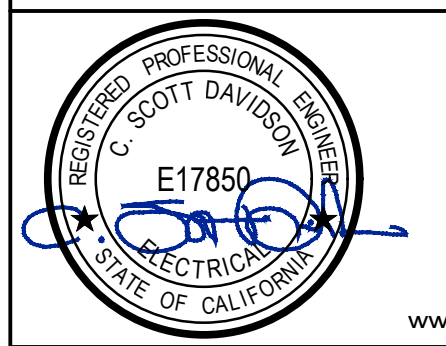
Fresno County Department of Public Works and Planning Capital Projects
2220 Tulare Street, 8th Floor
Fresno, California 93721

Sheet No.
E1.1

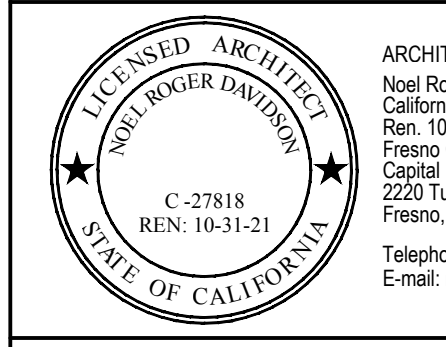


Key Notes

1. PROPOSED 4" C. PRIMARY PER PG&E RULE 16 DOCS.
2. PROPOSED PG&E STANDARD CONCRETE PAD. SET MIN. 36" FROM CMU WALL AND MIN. 60" FROM FACE OF CURB.
3. PROPOSED (4) 5" C. SECONDARY PER PG&E RULE 16 DOCS.
4. PAD MOUNTED, FREESTANDING ELECTRICAL EQUIPMENT. REFER TO POWER SINGLE LINE DIAGRAM, SHEET E1.2, FOR ADDITIONAL UNDERGROUND RUNS NOT SHOWN HERE. SEE ALSO DETAIL H13E1.3.
NOTE: ATS LOCATION IS FOR FUTURE GENERATOR INSTALLATION. PROVIDE PULL CAN ONLY AT THAT LOCATION.
5. POTENTIAL LOCATION OF FUTURE STANDBY EMERGENCY GENERATOR (N.I.C.). STUB CONDUITS INTO B1017 AND B1730 BOXES FOR FUTURE CONNECTION. VERIFY LOCATIONS WITH OWNER.
6. 1-1/4" C. TO FUTURE ATS LOCATION.
7. 1-1/4" C. TO FUTURE GENERATOR MONITOR PANEL LOCATION.
8. GEN FEEDERS PER POWER SINGLE LINE DIAGRAM.
9. TRANSFORMER PRIMARY AND SECONDARY PER POWER SINGLE LINE DIAGRAM.
11. B1324 H20 PULLBOX WITH BOLT-DOWN STEEL LID. HOMERUN (3) 2" C. TO PANEL 3LA WITH PULL LINES FOR FUTURE EV CHARGER STATIONS.
21. 3x5 PULLBOX WITH SPRING-ASSIST BOLT DOWN STEEL LIDS.
22. H20 RATED PULLBOX WITH BOLT-DOWN STEEL LID. SIZE INDICATED.
23. (4) 5" C. FROM SWITCHBOARD SB-H FOR FUTURE SOLAR.
24. (4) 2" C. & (4) 1-1/2" C. FROM PANEL 3HA FOR FUTURE SITE POWER.
25. SITE CONDUITS, QTY. AND SIZE INDICATED.
31. POWER PEDESTAL. PROVIDE 2#8, 1#8G. FEEDER FROM PANEL 3HA THRU 1-1/2" C.
32. 20A DEDICATED CIRCUIT TO POWER PEDESTAL. 1" C. 2#8, 1#8G. THROUGHOUT CIRCUIT.
41. INSTALL GATE OPERATOR AND EXIT-, SHADOW-, AND REVERSE-LOOPS IN ASPHALT PER MANUFACTURER INSTRUCTIONS. PROVIDE 2#8, 1#8G. FEEDER FROM PANEL 3LA THRU 1-1/2" C.
51. STUB FOR FUTURE PANEL / CABINET. SEE F1/E1.2.



Hardin-Davidson Engineering
 356 Polasky Ave., Suite 200
 Clovis, CA 93612
 559.323.4995 tel
 www.hardin-davidson.com



ARCHITECT:
 Neil Roger Davidson, A.J.A., Architect
 California Licensed Architect No. C-27818
 Ren. 10-31-2021
 Fresno County Department of Public Works
 Capital Projects
 2220 Tulare Street, Eighth Floor
 Fresno, California 93721
 Telephone: (559) 604-4477
 E-mail: ndavidson@co.fresno.ca.us

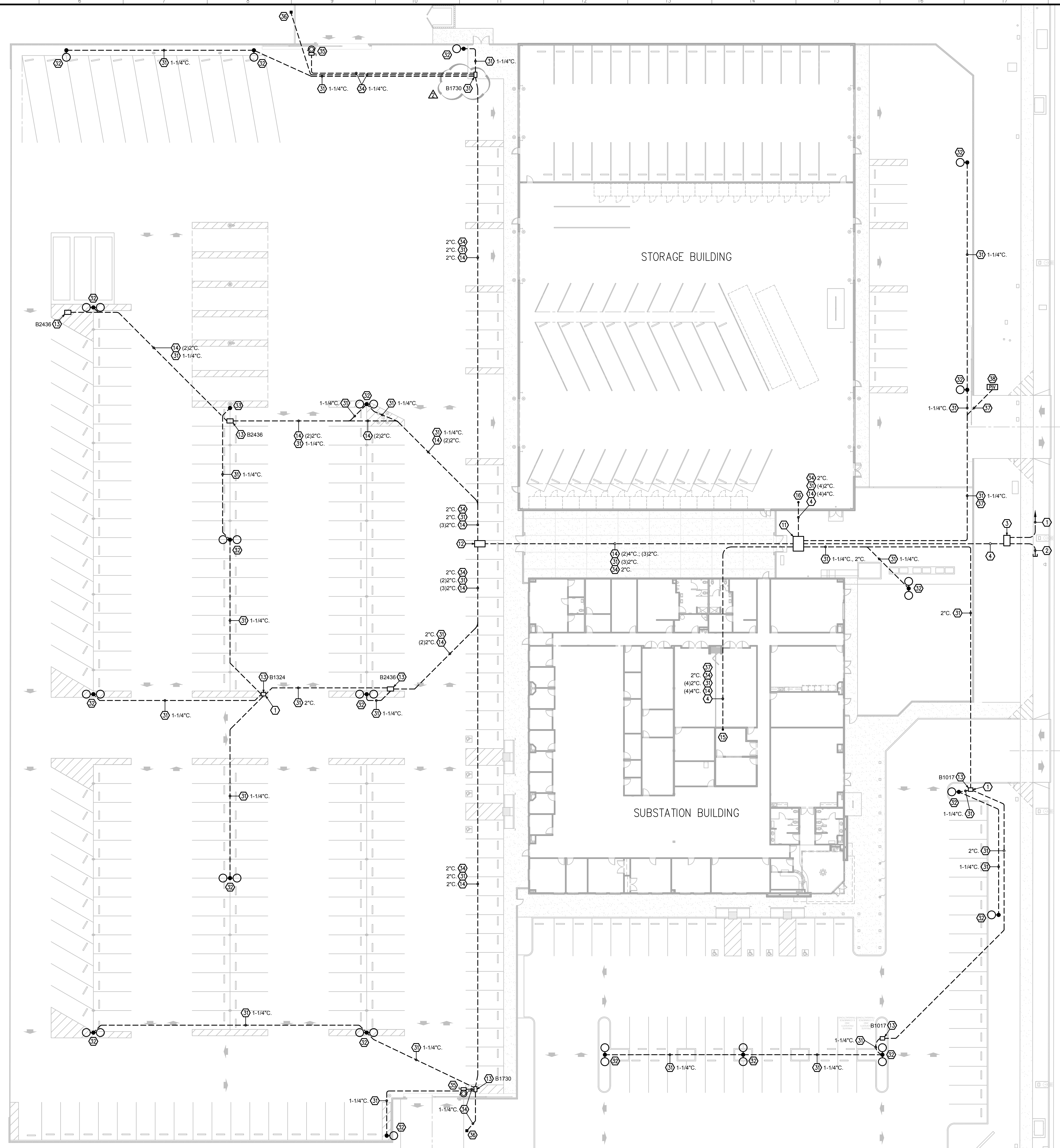
Project:
 Sheriff Area 2 Sub-Station
 1129 N. Armstrong Ave., Fresno, CA
 APN: 310-133-04, -05, and -06
 ISSUE DATE: 6.16.2020
 PROJECT NO: 180293 / 19003
 FILE NAME: 19074 - Elec_Split Bid_Set_Add2

Sheet Content:
 POWER SITE PLAN

Fresno County Department of Public Works and Planning
 Capital Projects
 2220 Tulare Street, 8th Floor
 Fresno, California 93721

Sheet No.
E2.1

> File: 19074 - Elec_Split Bid_Set_Add2.dwg > Plotted: 6/16/2020 10:56 AM
 > Plotter: HP DesignJet T1100e



- ### Key Notes
- (2) 4\"/>
 - (2) 4\"/>
 - 3x5 CUSTOMER VAULT WITH BOLT-DOWN STEEL LIDS.
 - (2) 4\"/>
 - 5x7 VAULT WITH SPRING-ASSIST BOLT DOWN STEEL LIDS.
 - 3x5 VAULT WITH SPRING-ASSIST BOLT DOWN STEEL LIDS.
 - H20 RATED PULLBOX WITH BOLT-DOWN STEEL LID, SIZE INDICATED.
 - LOW VOLTAGE CONDUITS, SIZE AND QTY. INDICATED.
 - STUB CONDUITS UP AT BACKBOARD.
 - STUB CONDUITS UP AT FUTURE IT ROOM LOCATION. VERIFY LOCATION WITH OWNER.
 - CAMERA CONDUITS, SIZE AND QTY. INDICATED.
 - BRING CONDUITS INTO LIGHT POLE FOR CAMERAS.
 - BRING CONDUIT UP AT COLUMN AND TERMINATE IN 12\"/>
 - ACCESS SYSTEM CONDUIT, SIZE AND QTY. INDICATED.
 - BRING CONDUIT INTO GATE OPERATOR CONTROLLER.
 - VEHICLE READER PEDESTAL. VERIFY LOCATION WITH OWNER.
 - 1\"/>
 - CONNECT PIV TAMPER SWITCH.

SCOTT DAVIDSON
E17851
STATE OF CALIFORNIA

**Hardin-Davidson
Engineering**
356 Pollasky Ave., Suite 200
Clovis, CA 93612
559-323-4995 tel
www.hardin-davidson.com

NEIL ROGER DAVIDSON
C-27818
STATE OF CALIFORNIA

ARCHITECT:
Neil Roger Davidson, A.J.A., Architect
California Licensed Architect No. C-27818
Ret. 10-31-2021
Fresno County Department of Public Works
Capital Projects
2220 Tulare Street, Eighth Floor
Fresno, California 93721
Telephone: (559) 604-4477
E-mail: ndavidson@co.fresno.ca.us

Project:
 Sheriff Area 2 Sub-Station
 1129 N. Armstrong Ave., Fresno, CA
 APN: 310-133-04-05, and -06
 ISSUE DATE: 6.16.2020
 PROJECT NO: 190293 / 19003
 FILE NAME: 19074 - Elec_Split Bid Set_Add2

Sheet Content:
 LOW VOLTAGE SYSTEMS SITE PLAN

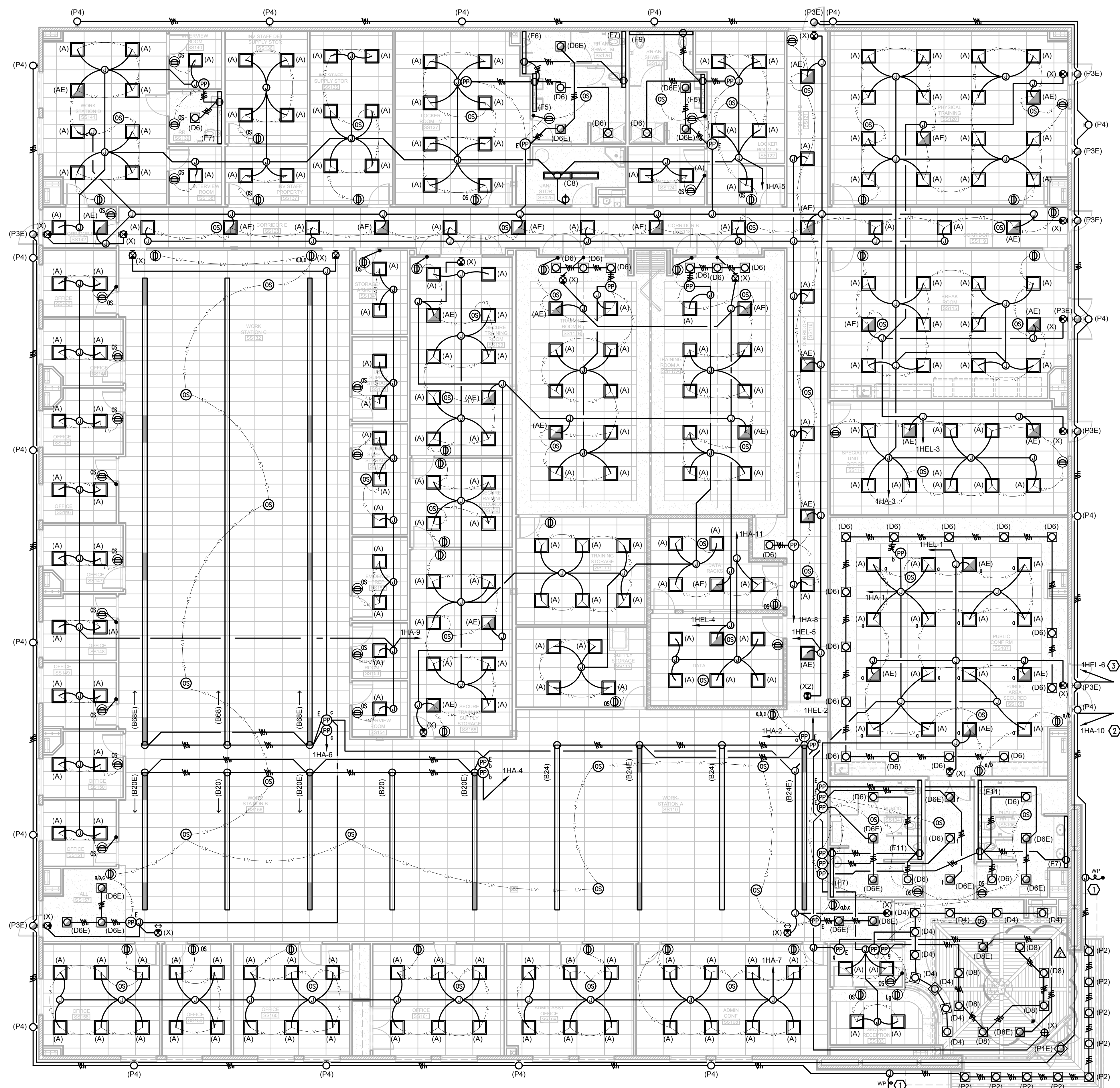
Fresno County Department of
 Public Works and Planning
 Capital Projects
 2220 Tulare Street, 8th Floor
 Fresno, California 93721

Sheet No.
E2.2

> File: 19074 - Elec_Split Bid Set_Add2.dwg > Plotted: 6/16/2020 10:56 AM
 Scale: 1" = 20'-0"

Key Notes

1. MAKE CONNECTION TO BACKLIT ILLUMINATED SIGN. CONCEAL ELECTRICAL WORK. SIGN UNDER SEPARATE PERMIT. VERIFY ROUGH-IN LOCATION WITH VENDOR.
2. HOME RUN VIA NIGHT POWER PACK MOUNTED ABOVE PANEL BOARD.
3. HOME RUN VIA NIGHT EMERGENCY POWER PACK MOUNTED ABOVE PANEL BOARD.



Hardin-Davidson Engineering
 356 Pollasky Ave., Suite 200
 Clovis, CA 93612
 559-323-4995 tel
 www.hardin-davidson.com

ARCHITECT:
 Neil Roger Davidson, A.I.A., Architect
 California Licensed Architect No. C-27818
 Ren: 10-31-2021
 Fresno County Department of Public Works
 Capital Projects
 2220 Tulare Street, Eighth Floor
 Fresno, California 93721
 Telephone: (559) 604-4177
 E-mail: ndavidson@co.fresno.ca.us

Project:
 Sheriff Area 2 Sub-Station
 1129 N. Armstrong Ave., Fresno, CA
 APN: 310-133-04-05, and -06
 ISSUE DATE: 6.16.2020
 PROJECT NO: 190293 / 19003
 FILE NAME: 19074 - Elec_Split Bid Set_Add2

Sheet Content:
 LIGHTING PLAN
 SUBSTATION BUILDING

Fresno County Department of
 Public Works and Planning
 Capital Projects
 2220 Tulare Street, 8th Floor
 Fresno, California 93721

Sheet No.
E3.0

A7 Lighting Plan - Substation Building