

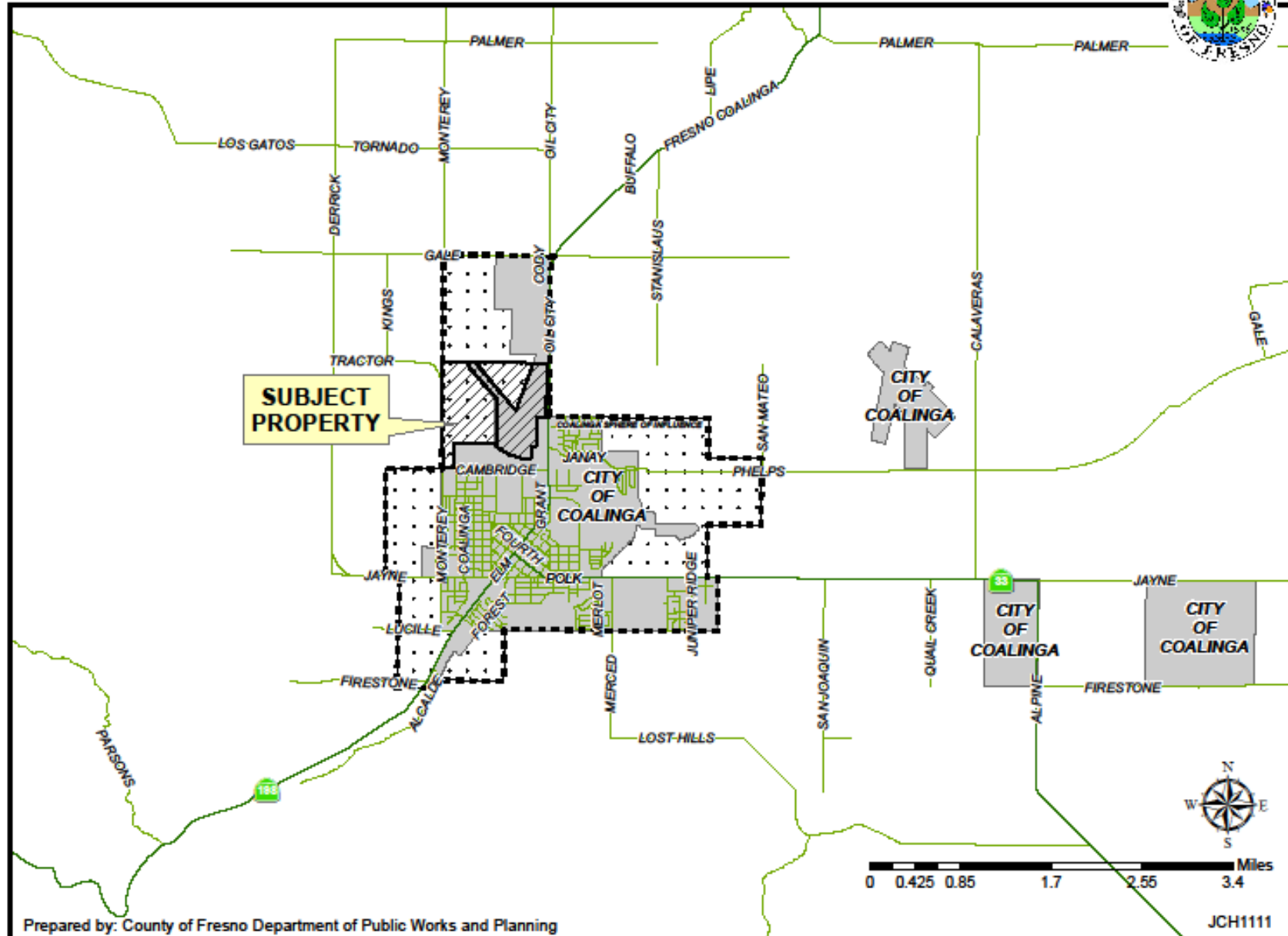


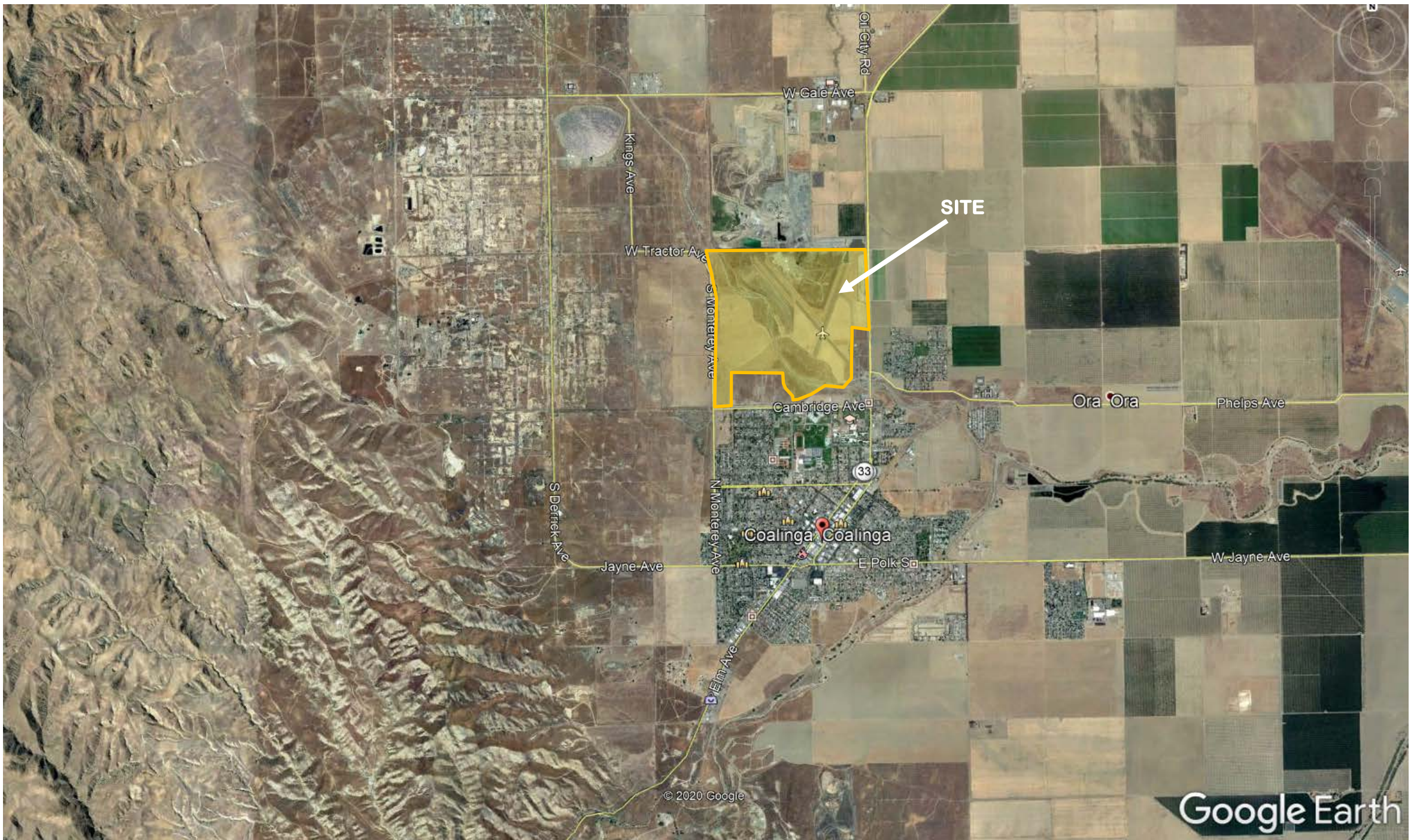
DEPARTMENT of PUBLIC WORKS and PLANNING
DEVELOPMENT SERVICES DIVISION

CUP 3512



LOCATION MAP

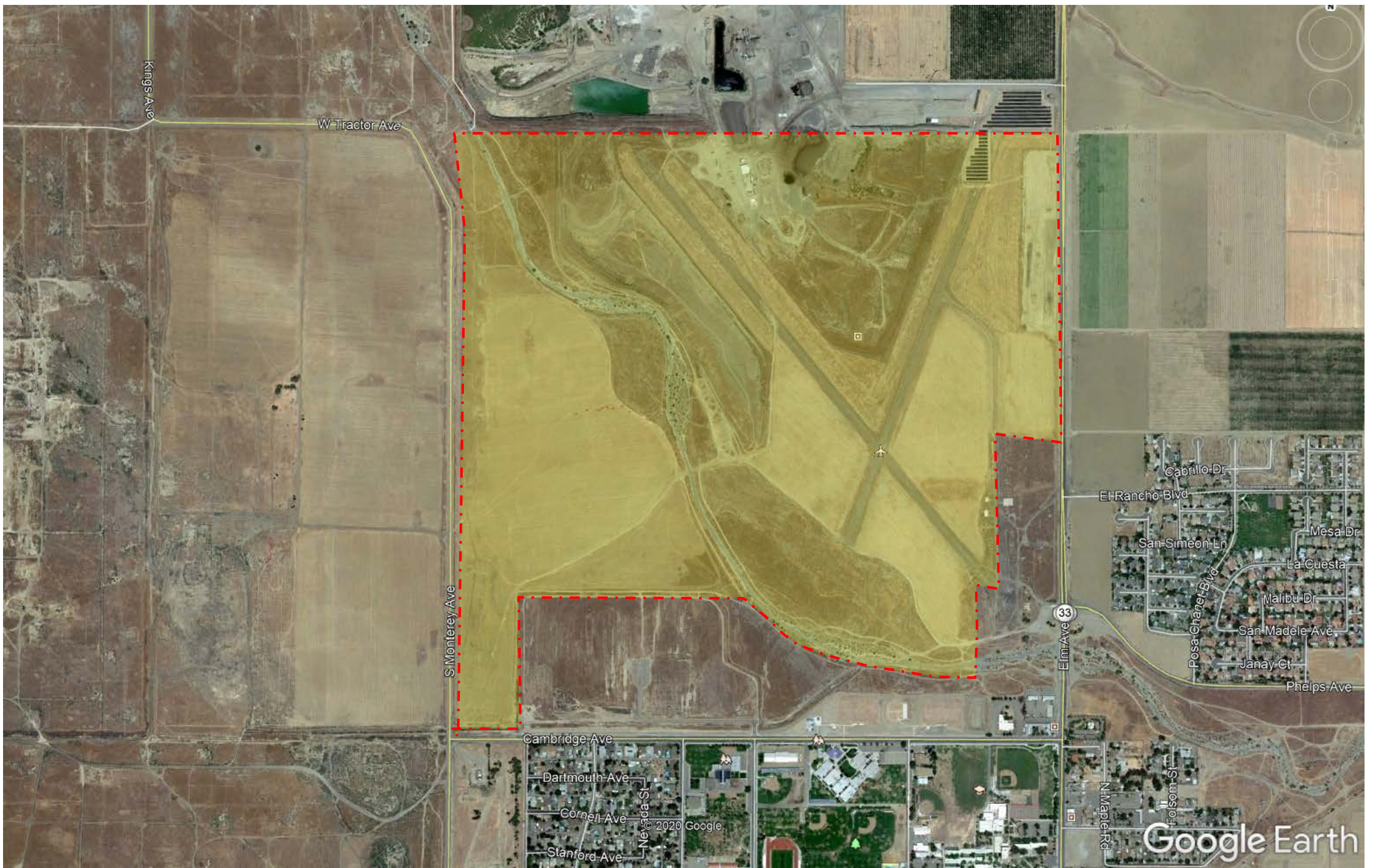




SITE

© 2020 Google

Google Earth



Kings Ave

W Tractor Ave

S Monterey Ave

33
Elm Ave

El Rancho Blvd

San Simeon Ln

Posa Chanet Blvd

Cañillo Dr

Mesa Dr

La Cuesta

Malibu Dr

San Madele Ave

Janay Ct

Phelps Ave

N Maple Rd

Folsom St

Cambridge Ave

Dartmouth Ave

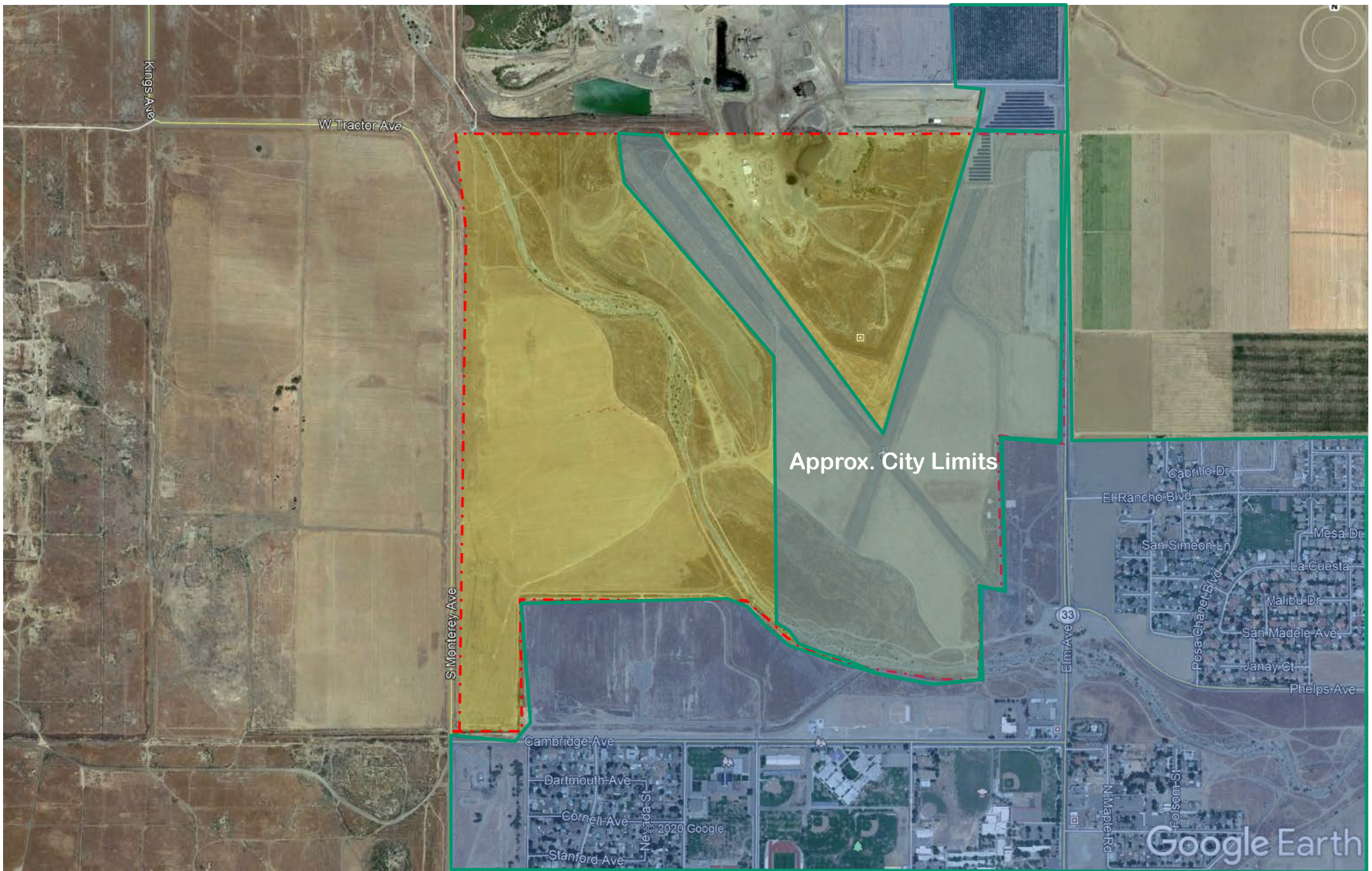
Cornell Ave

Stanford Ave

Nevada St

© 2020 Google

Google Earth



Kings Ave

W Tractor Ave

S Monterey Ave

Approx. City Limits

Elm Ave 33

Cambridge Ave

Dartmouth Ave

Cornell Ave

Stanford Ave

Nevada St

N Maple Rd

Folsom St

Posa Chanet Blvd

El Rancho Blvd

San Simeon Ln

Cañillo Dr

Mesa Dr

La Cuesta

Malibu Dr

San Madele Ave

Janay Ct

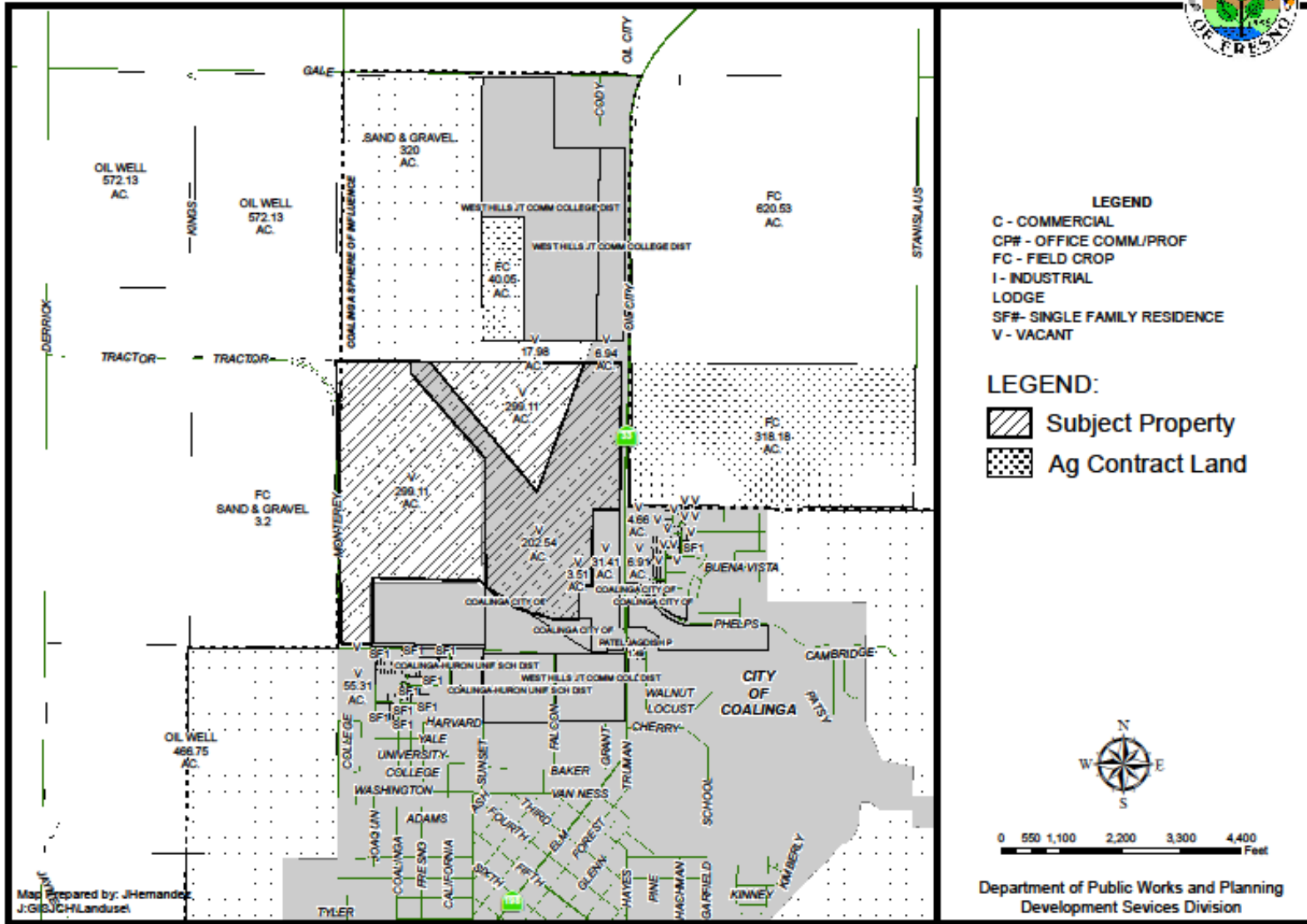
Phelps Ave

Google Earth

© 2020 Google

CUP 3512

EXISTING LAND USE MAP



LEGEND

C - COMMERCIAL
 CP# - OFFICE COMM/PROF
 FC - FIELD CROP
 I - INDUSTRIAL
 LODGE
 SF# - SINGLE FAMILY RESIDENCE
 V - VACANT

LEGEND:

Subject Property
 Ag Contract Land



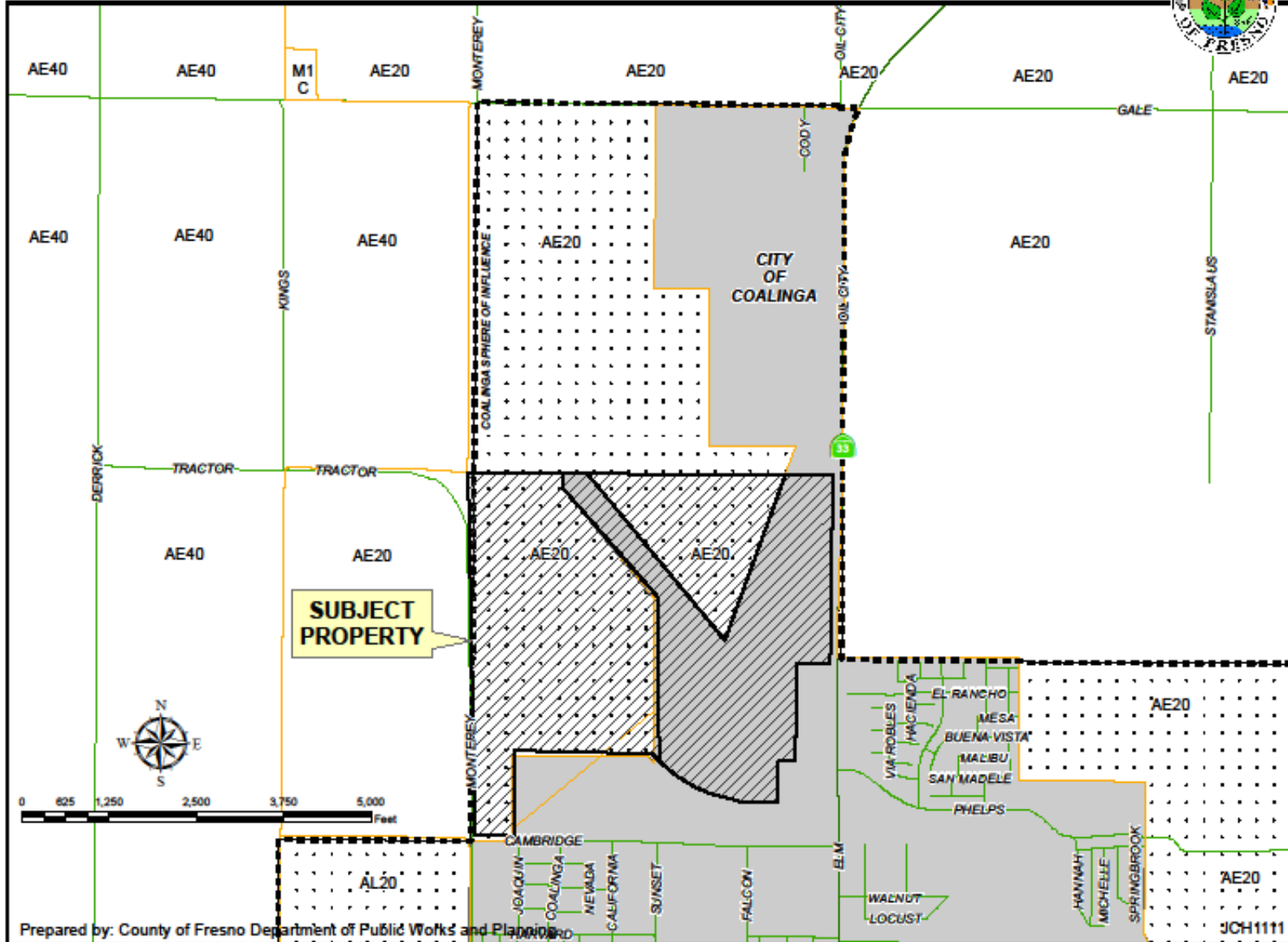
0 550 1,100 2,200 3,300 4,400 Feet

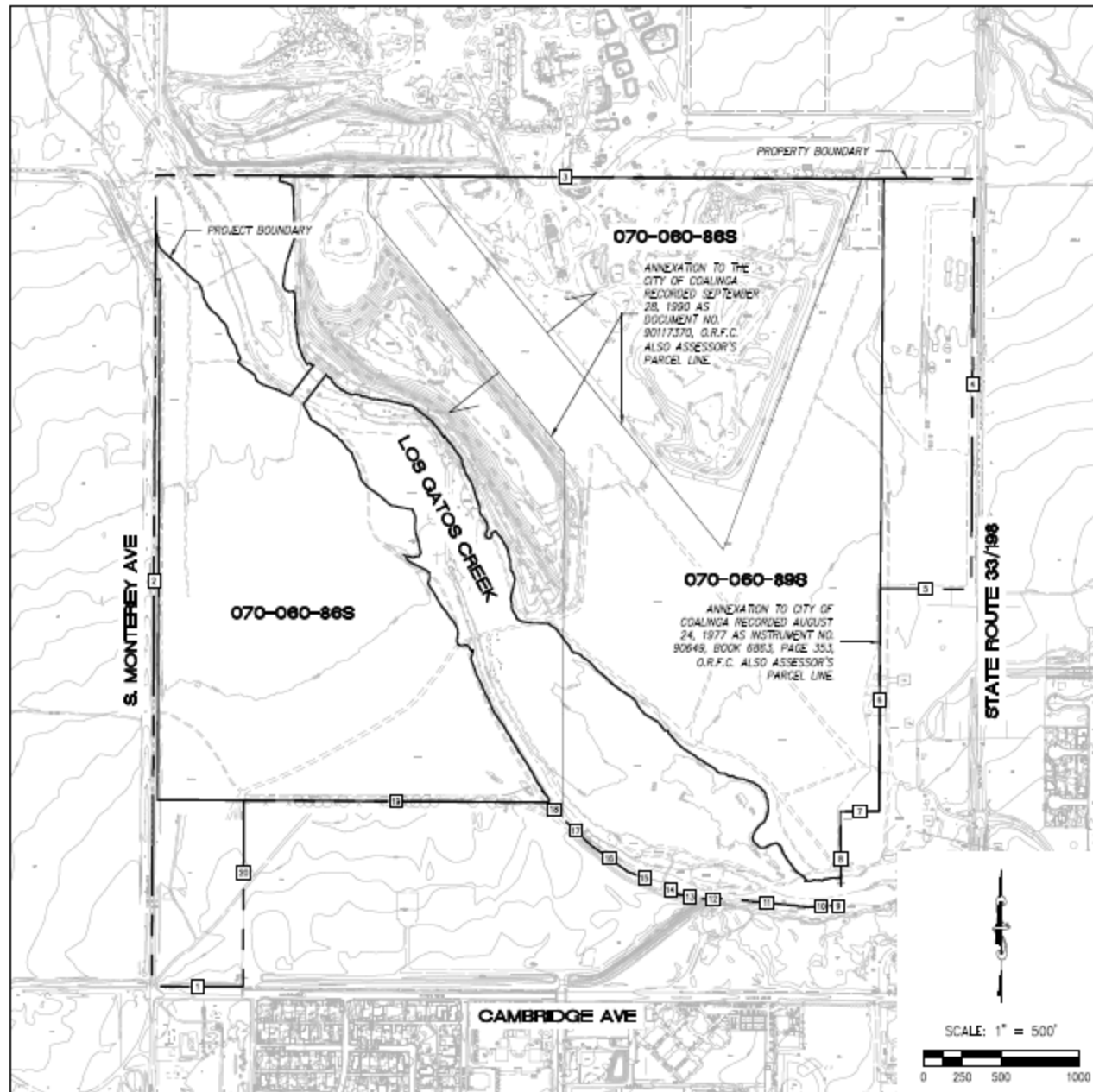
Department of Public Works and Planning
 Development Services Division

Map prepared by: JHemandez
 J.G.SCHLander

CUP 3512
STR 29 - 20/15

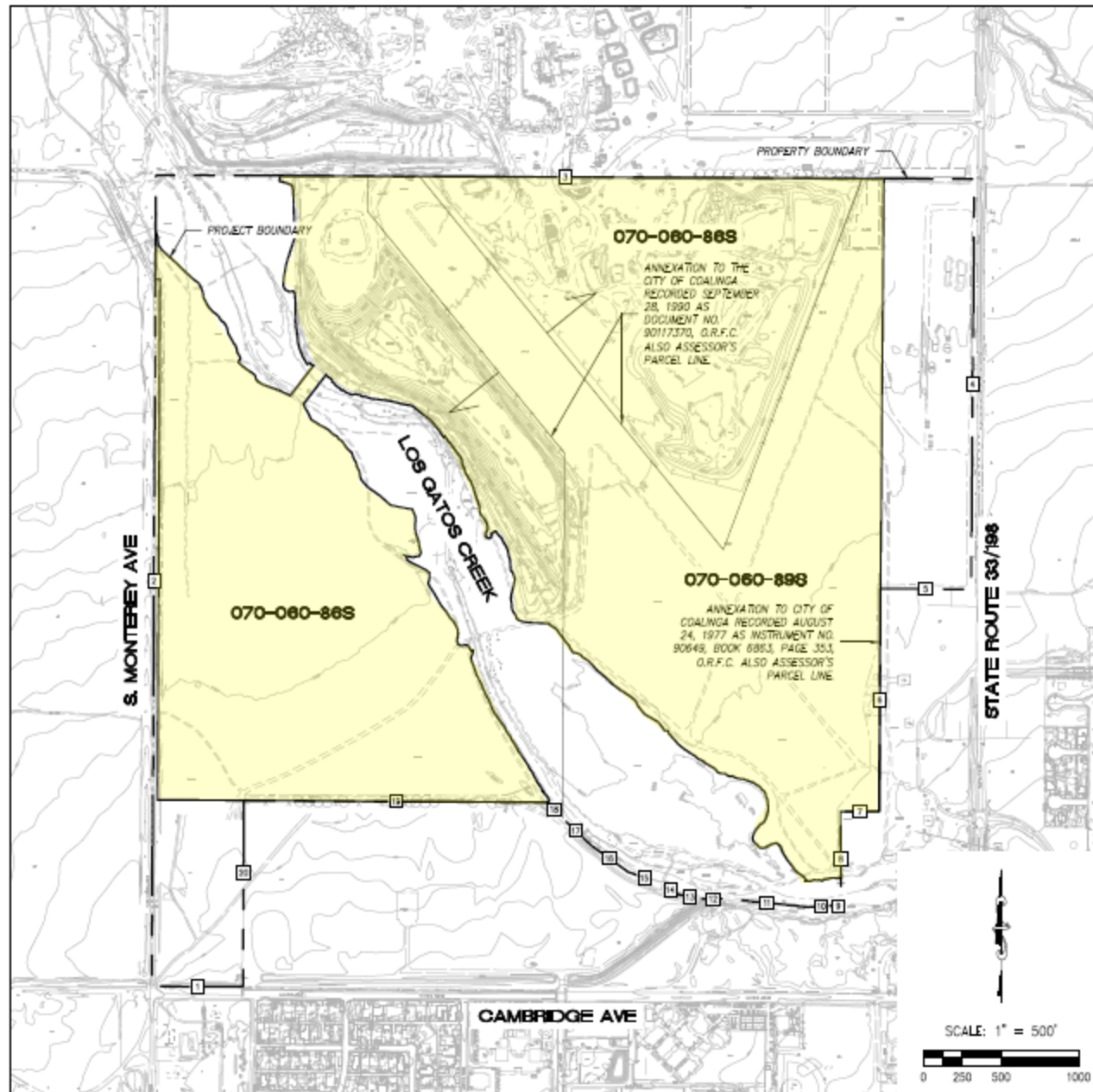
EXISTING ZONING MAP





SITE OVERVIEW MAP

SCALE: 1" = 500'



SITE OVERVIEW MAP

SCALE: 1" = 500'

**TABLE 1
ESTIMATED PROJECT PHASING**

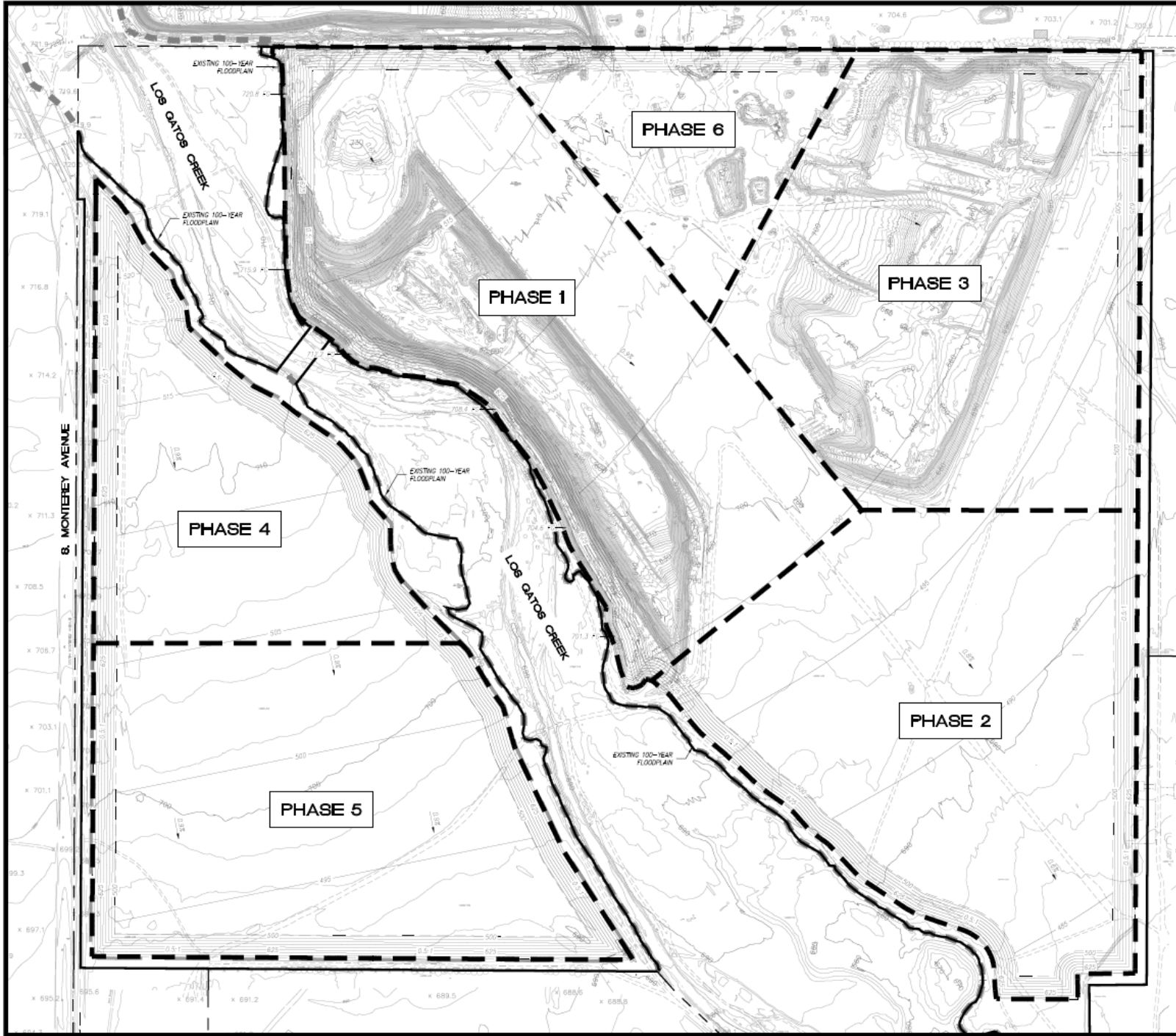
Phase	Est. Acres	Est. Tons (millions)	Est. Years to Completion
Phase 1	78	19	13
Phase 2	79	22	15
Phase 3	74	20	13
Phase 4	46	6	4
Phase 5	69	9	6
Phase 6	22	6	4
Total	368	82	55

- Notes:**
- The estimated project phasing is provided only as a guideline. Actual phasing depths, boundaries, quantities and timelines may be affected by unforeseen changes in geology and/or market conditions.
 - Estimated years to completion calculated using historical average production rate of 1.5 million tons/year.

LEGEND

EXISTING CONTOUR	
EXISTING EASIMENT	
EXISTING FLOODPLAIN	
PROPOSED MINING CONTOUR	
PHASE BOUNDARY	
PROPERTY BOUNDARY (501.65 ACRES)	
PROJECT BOUNDARY (368.58 ACRES)	

NOTE
FINAL MINING FOOTPRINT, SLOPES AND DEPTH MAY VARY DEPENDING ON FIELD CONDITIONS, ACCESSIBILITY OF PRODUCT, MARKET CONDITIONS, ABILITY OF OPERATOR TO MINE AND MEET THE RECLAMATION REQUIREMENTS, AND MARKET DEMAND.



SHEET 3 OF 7



GRANITE CONSTRUCTION COMPANY 2716 GRANITE COURT FRESNO, CA 93706	GRANITE CONSTRUCTION COMPANY COALINGA MINE EXPANSION PROJECT MINE PHASING OVERVIEW	
	Chang Consultants Civil Engineering/Hydrology/Hydraulics/Sedimentation P.O. Box 908 Hanalei, Hawaii, CA 93287-4008 www.changconsultants.com	T: (805) 692-0700 F: (805) 692-1162 www.changconsultants.com

**TABLE 1
ESTIMATED PROJECT PHASING**

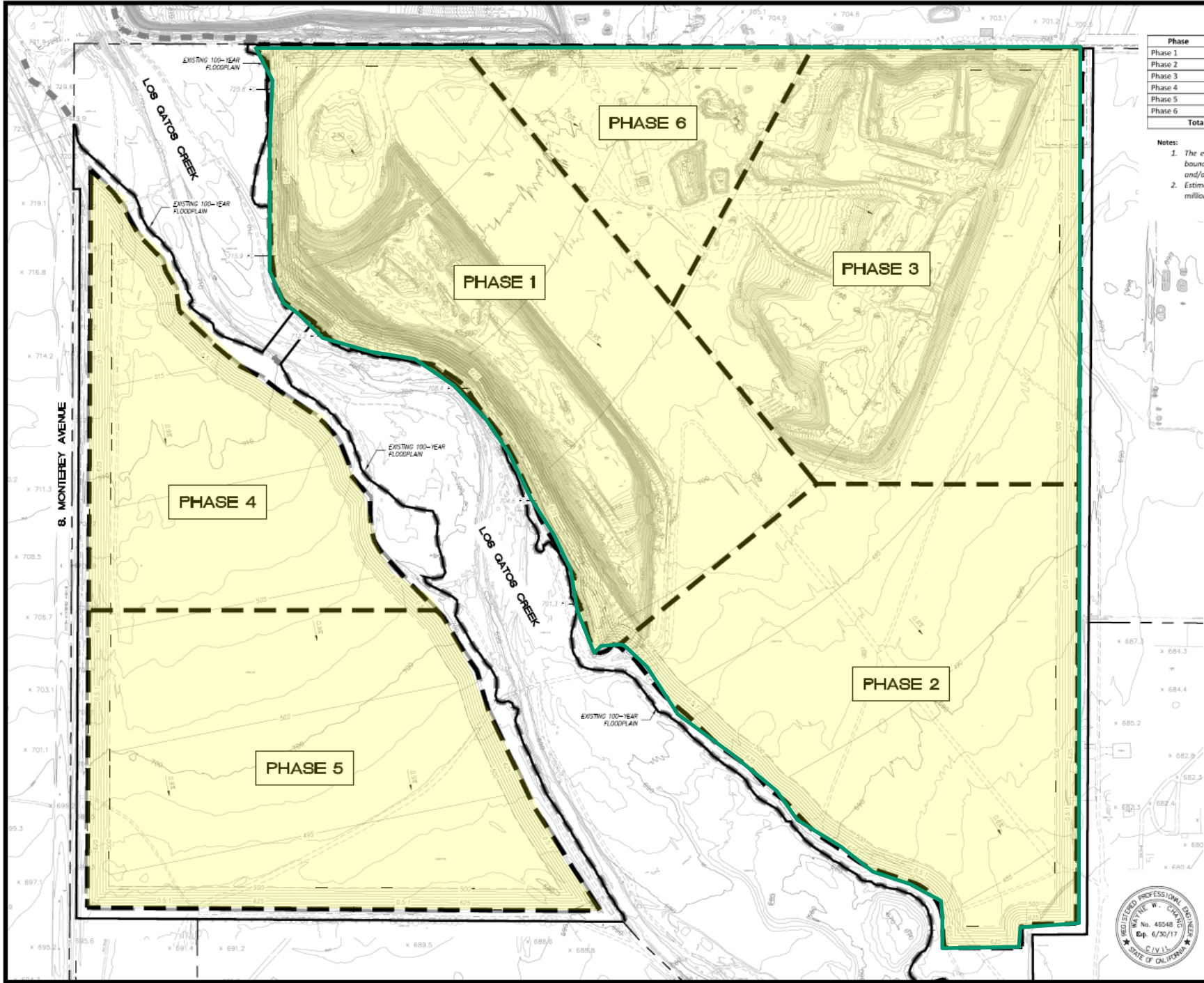
Phase	Est. Acres	Est. Tons (millions)	Est. Years to Completion
Phase 1	78	19	13
Phase 2	79	22	15
Phase 3	74	20	13
Phase 4	46	6	4
Phase 5	69	9	6
Phase 6	22	6	4
Total	368	82	55

- Notes:**
- The estimated project phasing is provided only as a guideline. Actual phasing depths, boundaries, quantities and timelines may be affected by unforeseen changes in geology and/or market conditions.
 - Estimated years to completion calculated using historical average production rate of 1.5 million tons/year.

LEGEND

EXISTING CONTOUR	
EXISTING EASIMENT	
EXISTING FLOODPLAIN	
PROPOSED MINING CONTOUR	
PHASE BOUNDARY	
PROPERTY BOUNDARY (501.65 ACRES)	
PROJECT BOUNDARY (368.58 ACRES)	

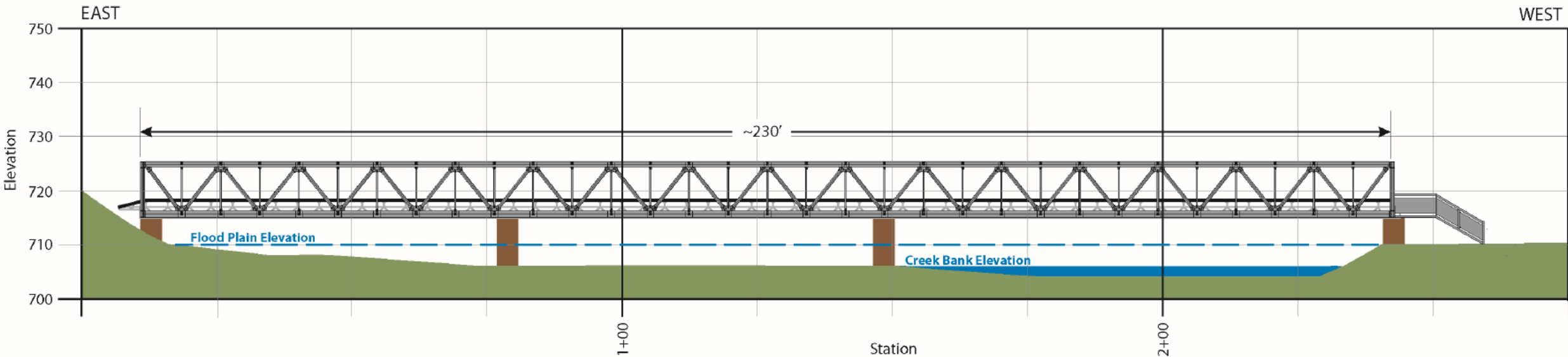
NOTE
FINAL MINING FOOTPRINT, SLOPES AND DEPTH MAY VARY DEPENDING ON FIELD CONDITIONS, ACCESSIBILITY OF PRODUCT, MARKET CONDITIONS, ABILITY OF OPERATOR TO MINE AND MEET THE RECLAMATION REQUIREMENTS, AND MARKET DEMAND.



SHEET 3 OF 7

GRANITE CONSTRUCTION COMPANY 2716 GRANITE COURT FRESNO, CA 93706	GRANITE CONSTRUCTION COMPANY COALINGA MINE EXPANSION PROJECT	
	MINE PHASING OVERVIEW	
Chang Consultants Civil Engineering, Hydrology, Hydraulics, Sedimentation P.O. Box 908 Hanalei, Kauai, HI 96721 www.changconsultants.com	D	
	C	
	B	
	A	
	Date:	Revision:





**Figure 7: Conceptual Bridge Conveyor Schematic
Coalinga Mine Expansion Project
Fresno County, California**

Existing Conditions at Los Gatos Creek

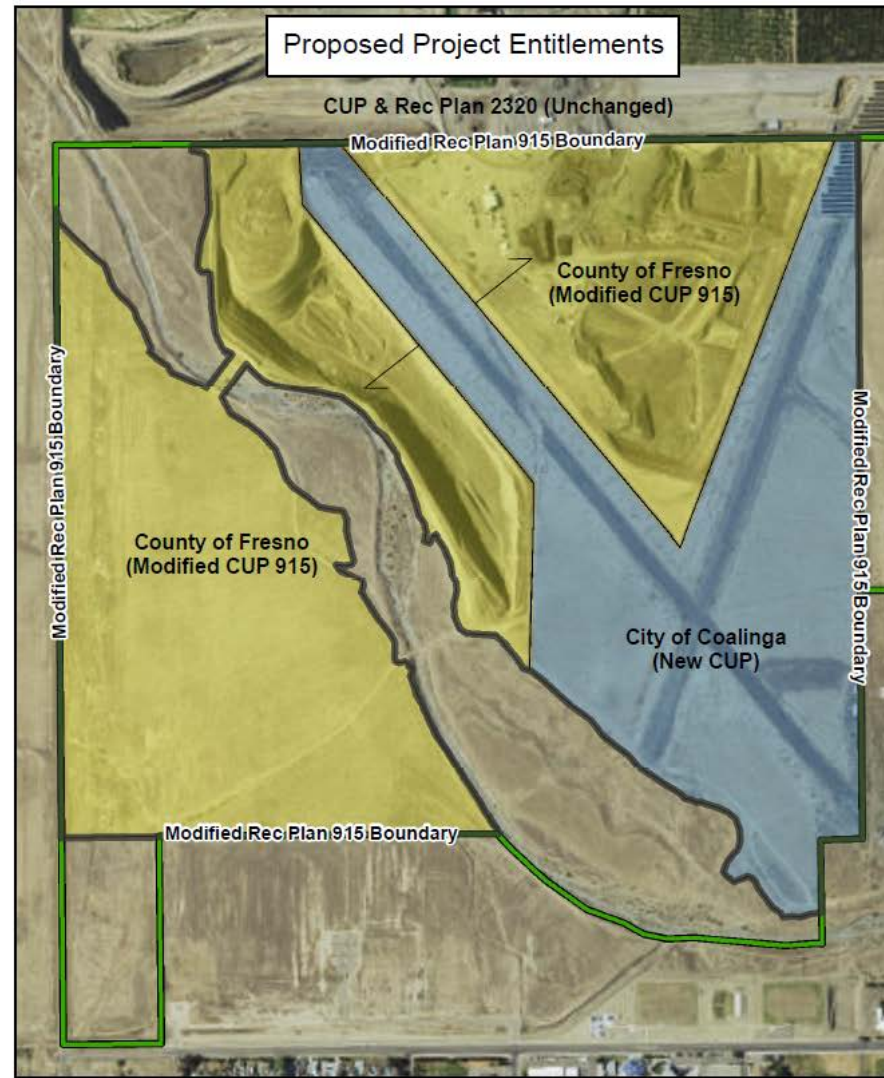
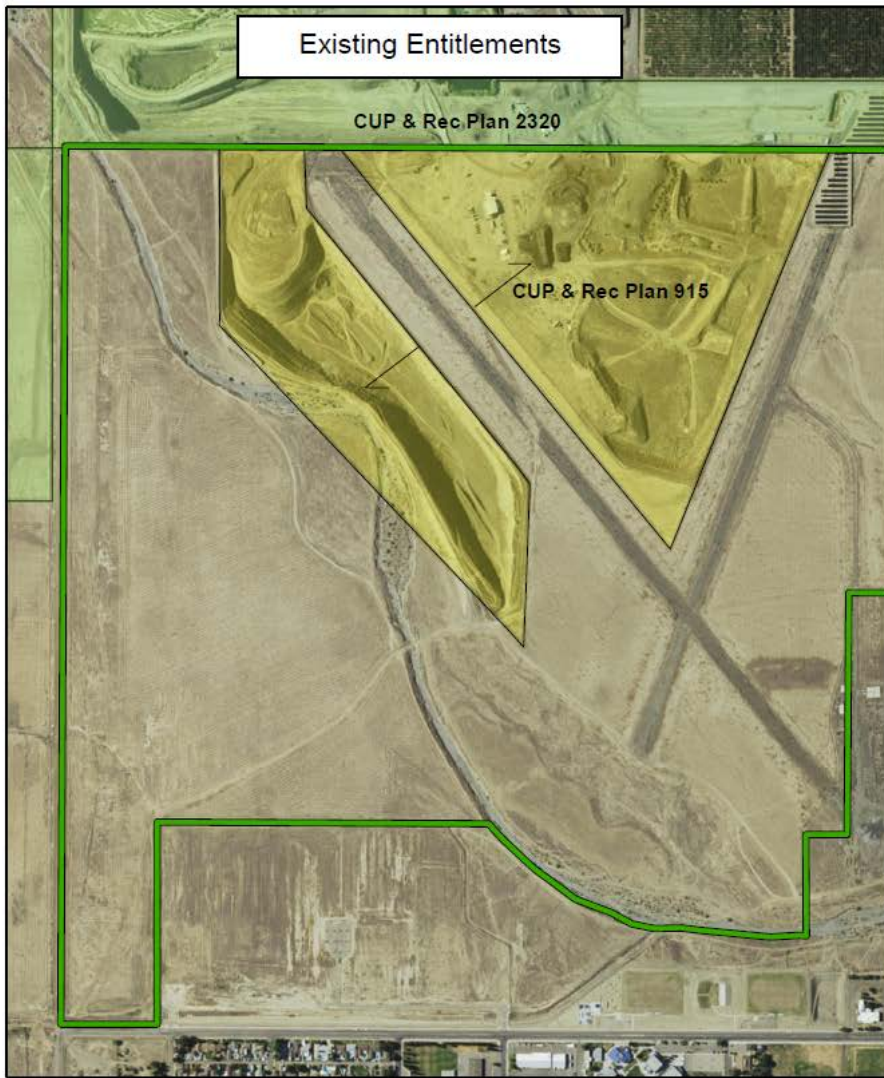




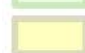
Proposed Truss Bridge Conveyor Crossing







Photograph Date: 3/9/2020.

**Figure 8: Conceptual Bridge Conveyor Visual Simulation
Coalinga Mine Expansion Project
Fresno County, California**



-  Site Boundary
-  CUP & Rec Plan 2320, Fresno County
-  CUP & Rec Plan 915, Fresno County

**Figure 3: Existing and Proposed Entitlements
Coalinga Mine Expansion Project
Fresno County, California**

-  Site Boundary
-  Modified Rec Plan 915 Boundary
-  Modified CUP 915, Fresno County
-  New CUP, City of Coalinga



July 2015
Sage Thurmond - GIS Intern
Note: Boundaries are approximate based on GIS data.

Findings

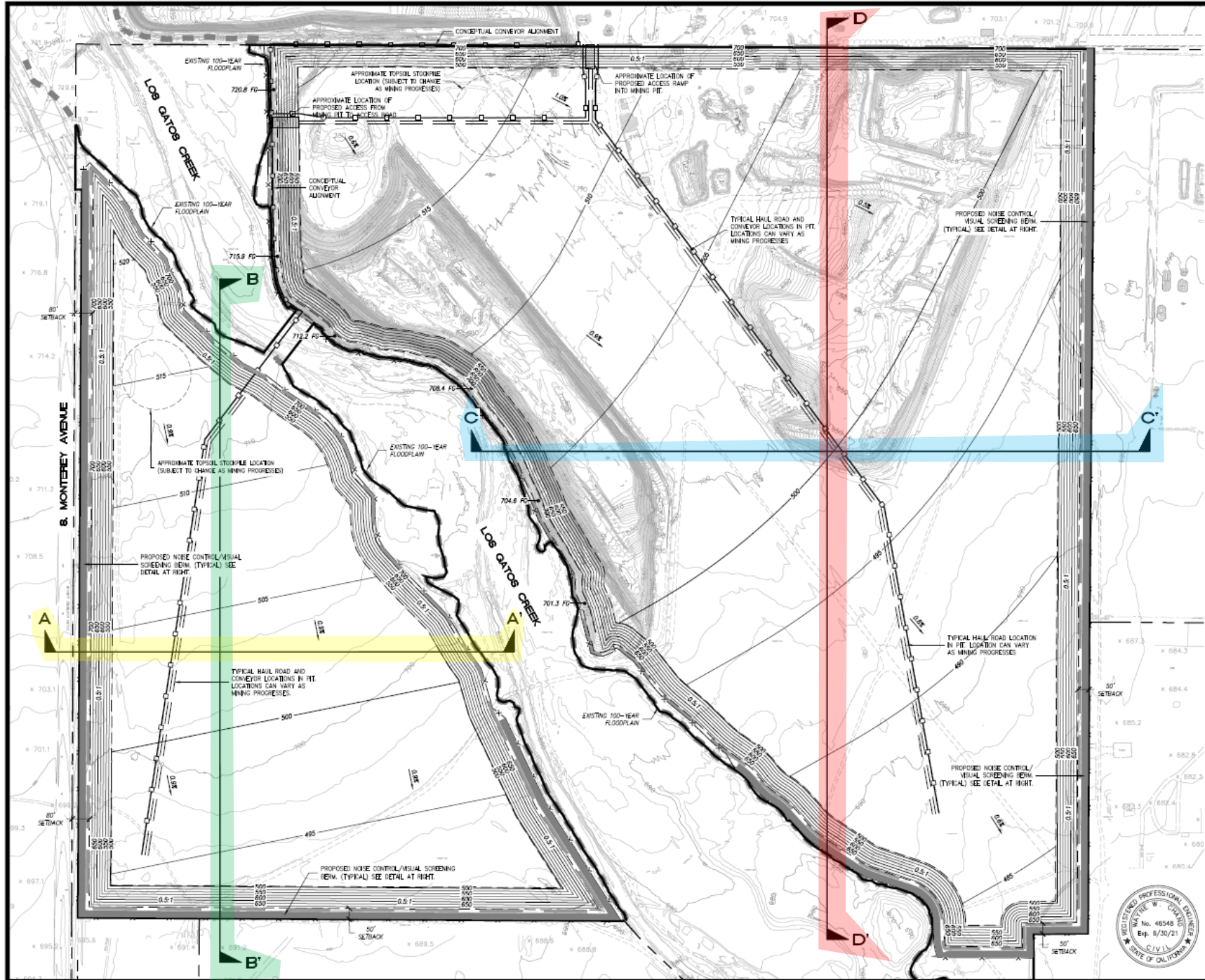
- 1. That the site for the proposed use is adequate in size and shape to accommodate said use and all yards, spaces, wall and fences, parking, loading, landscaping and other features required by this Division, to adjust said use with land and uses in the neighborhood.***
- 2. That the site for the proposed use related to streets and highways is adequate in width and pavement type to carry the quantity and kind of traffic generated by the proposed use.***
- 3. That the proposed use will have no adverse impact on abutting property and surrounding neighborhood or permitted use thereof.***
- 4. That the proposed development is consistent with the General Plan.***
- 5. That the proposed use has been reviewed for compliance with Zoning Ordinance Section 858 - Regulations for Surface Mining and Reclamation in all Districts and meets the applicable requirements therein.***
- 6. That the conditions stated in the resolution are deemed necessary to protect the public health, safety and general welfare.***



DEPARTMENT of PUBLIC WORKS and PLANNING
DEVELOPMENT SERVICES DIVISION

CUP 3512



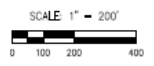
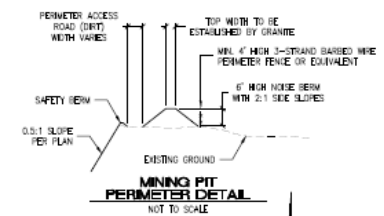


LEGEND

- EXISTING CONTOUR
- EXISTING 100-YEAR FLOODPLAIN
- EXISTING EASEMENT
- PROPERTY BOUNDARY (501.85 ACRES)
- PROJECT BOUNDARY (368.58 ACRES)
- PROPOSED CONTOUR
- PROPOSED TOP/TYF OF SLOPE
- MIN. 4" HIGH 3-STRAND BARBED WIRE PERIMETER FENCE OR EQUIVALENT
- TYPICAL HAIL ROAD
- PROPOSED CONCEPTUAL CONVEYOR ALIGNMENT
- PROPOSED NOISE CONTROL/VISUAL SCREENING BEAMS
- PROPOSED ACCESS RAMP
- PROPOSED PERIMETER ACCESS ROAD (DIRT)
- FINISHED GRADE SPOT ELEVATION 704.6 FG

NOTES

1. FINAL MINING FOOTPRINT, SLOPES AND WIDTH MAY VARY DEPENDING ON FIELD CONDITIONS, ACCESSIBILITY OF PRODUCT, MARKET CONDITIONS, ABILITY OF OPERATOR TO MINE AND MEET THE RECLAMATION REQUIREMENTS, AND MARKET DEMAND.
2. INTERNAL HAIL ROADS ARE SHOWN IN APPROXIMATE LOCATION AND MAY CHANGE THROUGHOUT THE LIFE OF THE PROJECT.
3. CREEK CROSSING MAY CONSIST OF AN ELEVATED CONVEYOR, LOW-FLOW CROSSING, BULKHEAD BARRIER OR SIMILAR.
4. MINIMUM 50-FOOT MINING SETBACKS FROM LOS GATOS CREEK FLOODPLAIN FOR NEW EXCAVATION AREAS PER PROJECT HYDRAULIC ANALYSES.



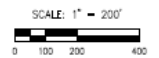
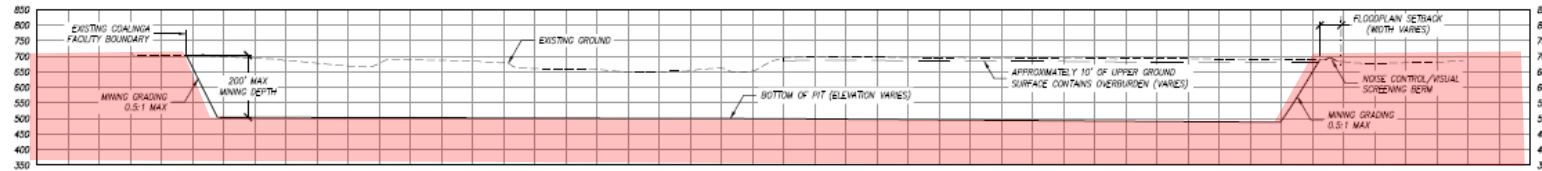
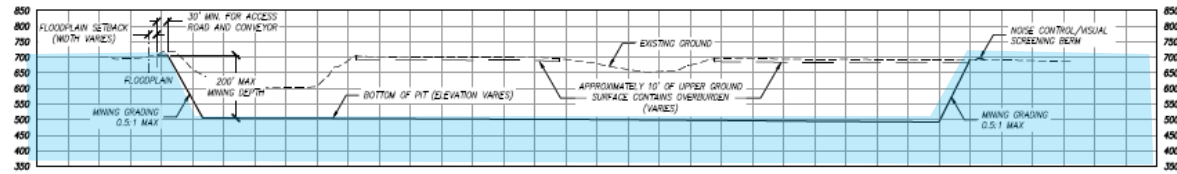
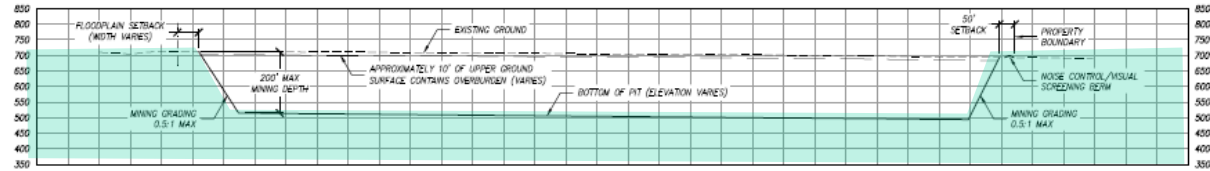
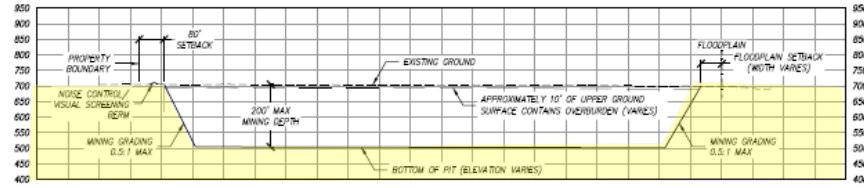
SHEET 4 OF 7

GRANITE CONSTRUCTION COMPANY 2715 GRANITE COURT FRESNO, CA 93706	GRANITE CONSTRUCTION COMPANY COALINGA MINE EXPANSION PROJECT	
	MINING PLAN	
ChangConsultants Civil Engineering/Geology/Hydrology/Sedimentation P.O. Box 808 Hanford, CA 93240 www.changconsultants.com	D	
	C	
	B	
	A	
	Date	Revision



NOTES

1. GROUNDWATER DEPTHS ARE GENERALLY 100 FEET OR AVERAGE OR MORE BELOW PROPOSED BOTTOM OF PITS.
2. FINAL MINING FOOTPRINT, SLOPES AND DEPTH MAY VARY DEPENDING ON FIELD CONDITIONS, ACCESSIBILITY OF PRODUCT, MARKET CONDITIONS, ABILITY OF OPERATOR TO MINE AND MEET THE RECLAMATION REQUIREMENTS, AND MARKET DEMAND.



SHEET 5 OF 7



GRANITE CONSTRUCTION COMPANY 2716 GRANITE COURT PRESNO, CA 93705	GRANITE CONSTRUCTION COMPANY	
	COALINGA MINE EXPANSION PROJECT	
Chang Consultants Civil Engineering, Hydrology, Hydraulic, Sedimentation P.O. Box 988 Redondo Beach, CA 90267-4886 www.changconsultants.com • www.changconsultants.com	MINING PLAN CROSS-SECTIONS	
	D	
	C	
	A	
	Date	Revision

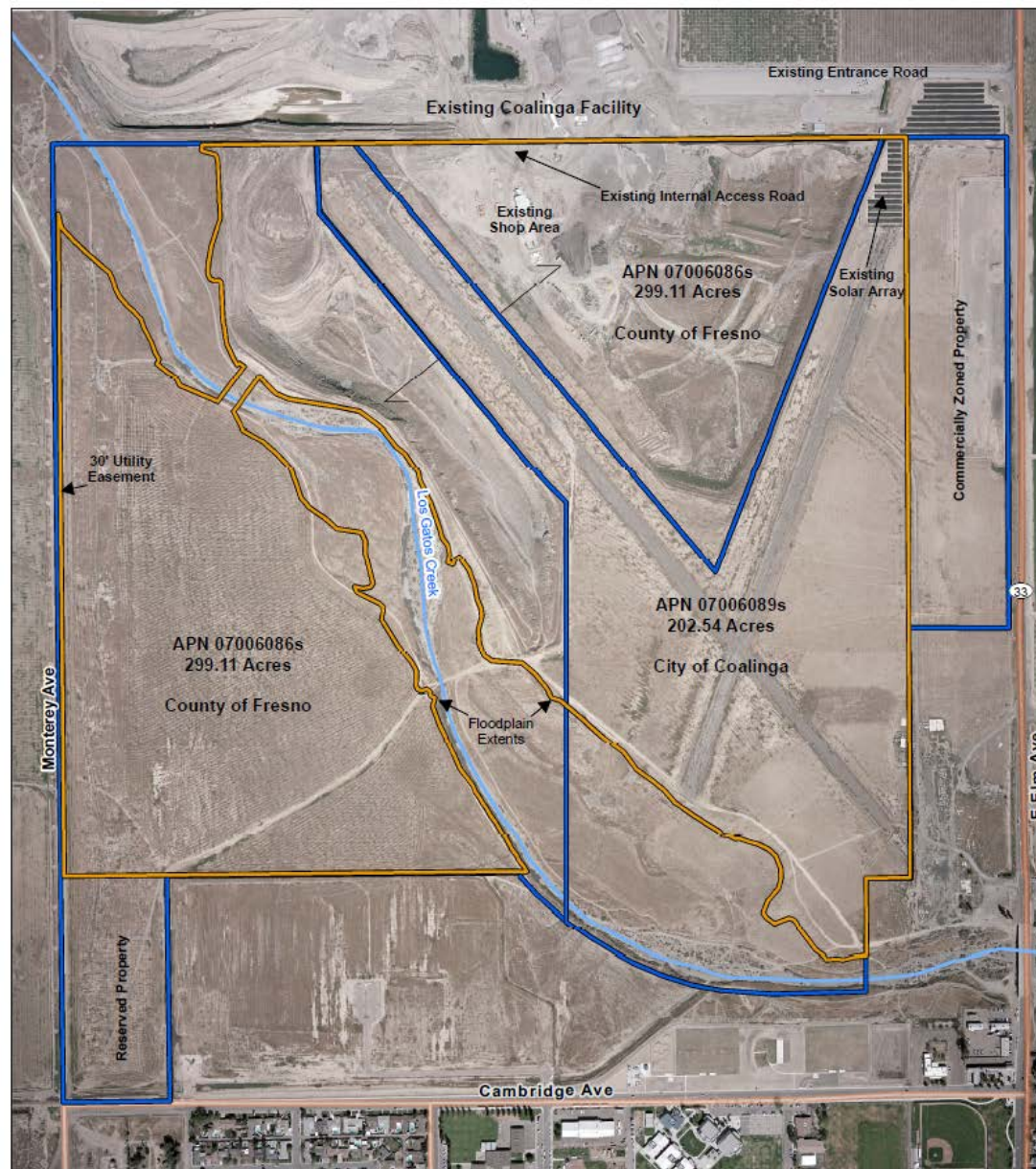


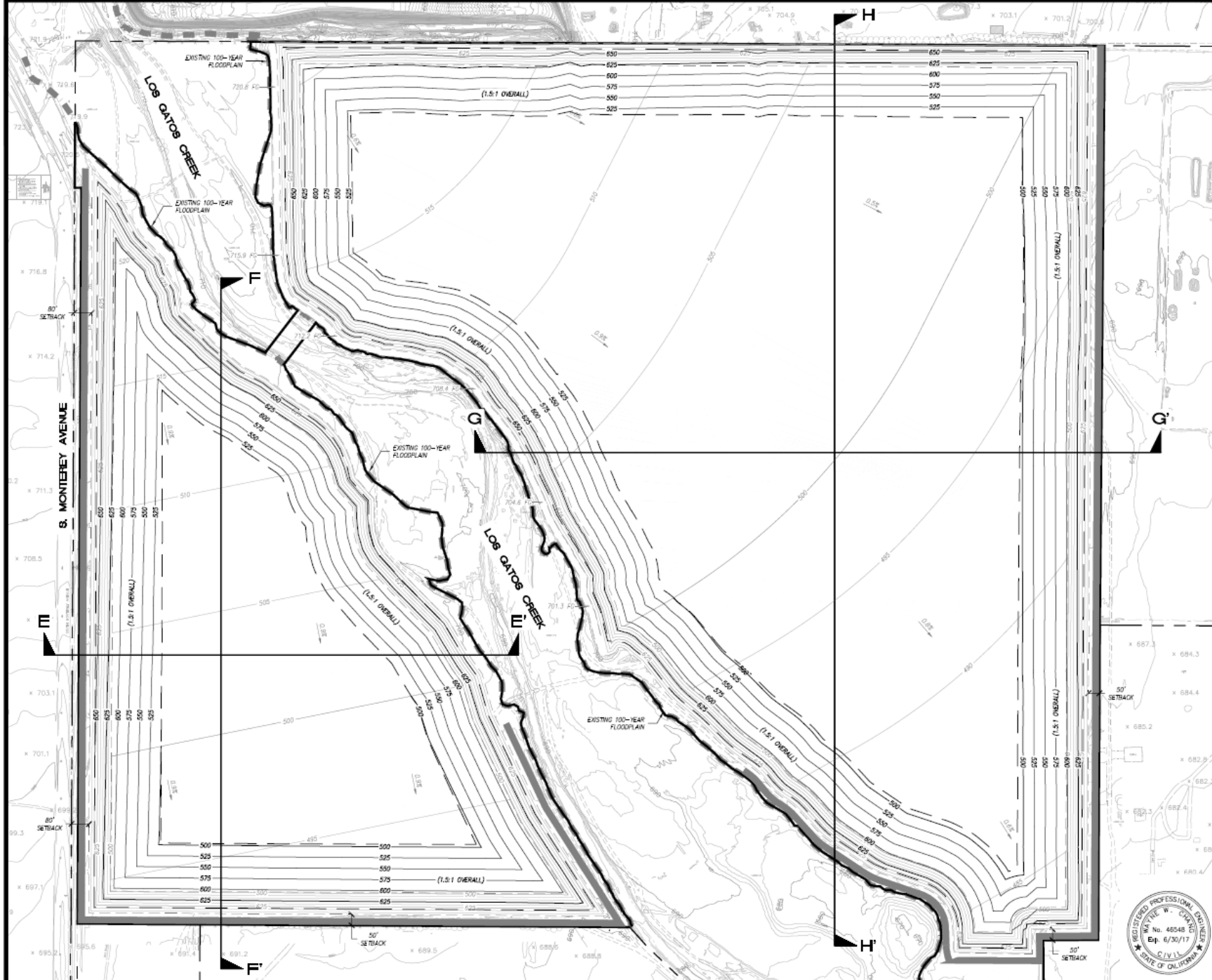
Figure 2: Site Overview Map
Coalinga Mine Expansion Project
Fresno County, California



- Creek
- Project Boundary (~368 Acres)
- Parcel Boundaries (~502 Acres)



July 2015
 Sage Thurmond - GIS Intern
 Note: Boundaries are approximate based on GIS data.



LEGEND

- EXISTING CONTOUR
- EXISTING 100-YEAR FLOODPLAIN
- EXISTING EASMENT
- PROPERTY BOUNDARY (501.65 ACRES)
- PROJECT BOUNDARY (368.58 ACRES)
- MINE PLAN CONTOUR
- PROPOSED BACKFILL CONTOUR
- PROPOSED TOP/TIE OF SLOPE
- PROPOSED NOISE CONTROL/VISUAL SCREENING BERM

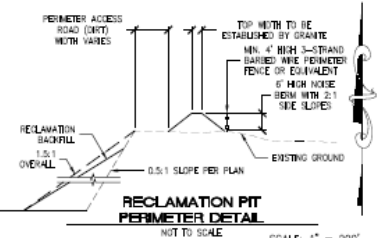
NOTES

1. CONSISTENT WITH THE FRESNO COUNTY MINING AND RECLAMATION STANDARDS, AS WELL AS RECOMMENDATIONS PROVIDED BY THE PROJECT GEOTECHNICAL ENGINEER, FINAL RECLAIMED SLOPES WILL NOT EXCEED 1.5H:1V. THE OVERALL FINAL RECLAIMED SLOPE ANGLE OF 1.5H:1V (OR FLATTER) MAY BE ACHIEVED THROUGH ONE OF THE FOLLOWING CONFIGURATIONS:
 - 1.5H:1V CUT SLOPE WITH NO BACKFILL
 - 0.9H:1V CUT SLOPE WITH BACKFILL AT 2H:1V TO FULL SLOPE HEIGHT, OR
 - 0.9H:1V CUT SLOPE WITH BACKFILL AT 2H:1V TO A DISTANCE OF 50 VERTICAL FEET OR LESS FROM THE TOP OF SLOPE
2. FOR ILLUSTRATIVE PURPOSES ONLY, THE MOST LIKELY SLOPE RECLAMATION SCENARIO IS SHOWN ON THE RECLAMATION PLAN SHEET FIGURES (A 0.9H:1V CUT SLOPE WITH BACKFILL AT 2H:1V TO A DISTANCE OF 50 VERTICAL FEET OR LESS FROM THE TOP OF SLOPE). HOWEVER, GRANITE RESERVES THE RIGHT TO ACHIEVE THE FINAL RECLAMATION SLOPE ANGLE WITH ANY OF THE THREE ANALYZED CONFIGURATIONS.
3. FINAL RECLAMATION ELEVATIONS AND EXTENTS MAY VARY BASED ON THE AMOUNT AND QUALITY OF MATERIAL UNCOVERED, THE AVAILABILITY OF BACKFILL (E.G. DUMBERBURN), AND THE ABILITY OF THE PRODUCER TO MINE AND MEET THE RECLAMATION REQUIREMENTS.
5. NOISE CONTROL BERMS, PERIMETER ACCESS ROADS, AND PERIMETER FENCING TO REMAIN FOLLOWING RECLAMATION.
6. DISTURBED SURFACES WITHIN THE PROJECT AREA WILL BE REVEGETATED WITH THE EXCEPTION OF CUT SLOPES, NOISE CONTROL BERMS AND PERIMETER ACCESS ROADS, WITH THE FOLLOWING SEED MIX.

REVEGETATION SEED MIX

Common Name	Plant Species	Application Rate (lbs PLS/acre)
Cattle stinkhorn	<i>Atriplex polycarpa</i>	4
California buckwheat	<i>Eriogonum fasciculatum</i> var. <i>podifolium</i>	3
Small fescue	<i>Festuca microstachya</i>	6
Downy plantain	<i>Plantago ovata</i>	4

Note: Modifications to this seed mix may be appropriate based on availability from suppliers, cost, and species determined most suitable at the time planting occurs. Ideally, revegetation will occur in the summer to early fall.



SHEET 6 OF 7

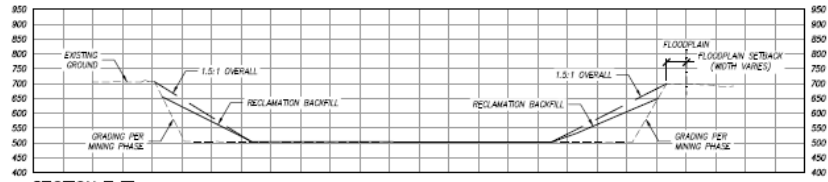
GRANITE CONSTRUCTION COMPANY
2716 GRANITE COURT
FRESNO, CA 93706

GRANITE CONSTRUCTION COMPANY
COALINGA MINE EXPANSION PROJECT
RECLAMATION PLAN

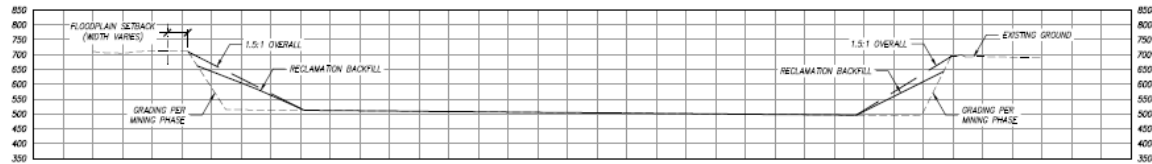


Chang Consultants
Civil Engineering/Hydrology/Hydrolics/Sedimentation
710 Elm Street
Fresno, California, CA 93707-4896
Tel: (559) 633-0790
Fax: (559) 633-1853
www.changconsultants.com

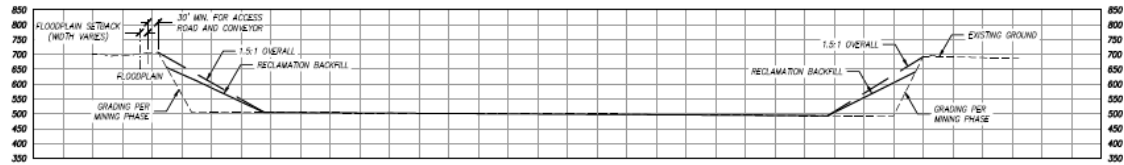
Rev	Description
01	Issue for Review
02	Issue for Review
03	Issue for Review
04	Issue for Review
05	Issue for Review
06	Issue for Review
07	Issue for Review
08	Issue for Review
09	Issue for Review
10	Issue for Review
11	Issue for Review
12	Issue for Review
13	Issue for Review
14	Issue for Review
15	Issue for Review
16	Issue for Review
17	Issue for Review
18	Issue for Review
19	Issue for Review
20	Issue for Review
21	Issue for Review
22	Issue for Review
23	Issue for Review
24	Issue for Review
25	Issue for Review
26	Issue for Review
27	Issue for Review
28	Issue for Review
29	Issue for Review
30	Issue for Review
31	Issue for Review
32	Issue for Review
33	Issue for Review
34	Issue for Review
35	Issue for Review
36	Issue for Review
37	Issue for Review
38	Issue for Review
39	Issue for Review
40	Issue for Review
41	Issue for Review
42	Issue for Review
43	Issue for Review
44	Issue for Review
45	Issue for Review
46	Issue for Review
47	Issue for Review
48	Issue for Review
49	Issue for Review
50	Issue for Review
51	Issue for Review
52	Issue for Review
53	Issue for Review
54	Issue for Review
55	Issue for Review
56	Issue for Review
57	Issue for Review
58	Issue for Review
59	Issue for Review
60	Issue for Review
61	Issue for Review
62	Issue for Review
63	Issue for Review
64	Issue for Review
65	Issue for Review
66	Issue for Review
67	Issue for Review
68	Issue for Review
69	Issue for Review
70	Issue for Review
71	Issue for Review
72	Issue for Review
73	Issue for Review
74	Issue for Review
75	Issue for Review
76	Issue for Review
77	Issue for Review
78	Issue for Review
79	Issue for Review
80	Issue for Review
81	Issue for Review
82	Issue for Review
83	Issue for Review
84	Issue for Review
85	Issue for Review
86	Issue for Review
87	Issue for Review
88	Issue for Review
89	Issue for Review
90	Issue for Review
91	Issue for Review
92	Issue for Review
93	Issue for Review
94	Issue for Review
95	Issue for Review
96	Issue for Review
97	Issue for Review
98	Issue for Review
99	Issue for Review
100	Issue for Review



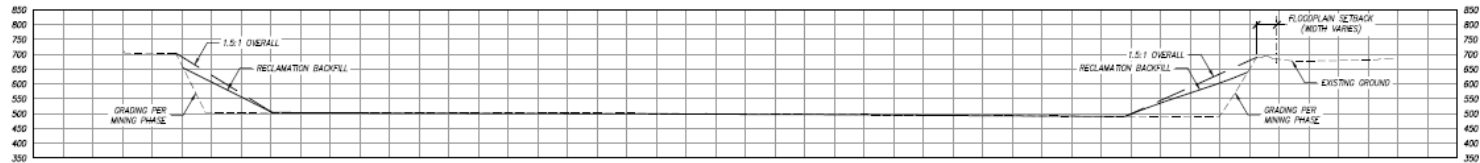
SECTION E-E
SCALE: HORIZ. 1"=200' VERT. 1"=200'



SECTION F-F
SCALE: HORIZ. 1"=200' VERT. 1"=200'



SECTION G-G
SCALE: HORIZ. 1"=200' VERT. 1"=200'



SECTION H-H
SCALE: HORIZ. 1"=200' VERT. 1"=200'

NOTES

- CONSISTENT WITH THE FRESNO COUNTY MINING AND RECLAMATION STANDARDS AS WELL AS RECOMMENDATIONS PROVIDED BY THE PROJECT GEOLOGICAL ENGINEER, FINAL RECLAIMED SLOPES WILL NOT EXCEED 1.5H:1V. THE OVERALL FINAL RECLAIMED SLOPE ANGLE OF 1.5H:1V (OR FLATTER) MAY BE ACHIEVED THROUGH ONE OF THE FOLLOWING CONFIGURATIONS:
 - 1.5H:1V CUT SLOPE WITH NO BACKFILL
 - 0.5H:1V CUT SLOPE WITH BACKFILL AT 3H:1V TO FULL SLOPE HEIGHT, OR
 - 0.5H:1V CUT SLOPE WITH BACKFILL AT 3H:1V TO A DISTANCE OF 50 VERTICAL FEET OR LESS FROM THE TOP OF SLOPE.
- FOR ILLUSTRATIVE PURPOSES ONLY, THE MOST UNLEY SLOPE RECLAMATION SCENARIO IS SHOWN ON THE RECLAMATION PLAN SHEETS/FIGURES (A 0.5H:1V CUT SLOPE WITH BACKFILL AT 3H:1V TO A DISTANCE OF 50 VERTICAL FEET OR LESS FROM THE TOP OF SLOPE). HOWEVER, GRANITE RESERVES THE RIGHT TO ACHIEVE THE FINAL RECLAMATION SLOPE ANGLES WITH ANY OF THE THREE ANALYZED CONFIGURATIONS.
- FINAL RECLAMATION ELEVATIONS AND EXTENTS MAY VARY BASED ON THE AMOUNT AND QUALITY OF MATERIAL UNCOVERED, THE AVAILABILITY OF BACKFILL (E.G. OVERBURDEN), AND THE ABILITY OF THE PRODUCER TO MINE AND MEET THE RECLAMATION REQUIREMENTS.
- NOISE CONTROL BERRING, PERIMETER ACCESS ROADS, AND PERIMETER FENCING TO REMAIN FOLLOWING RECLAMATION.

SCALE: 1" = 200'



SHEET 7 OF 7



GRANITE CONSTRUCTION COMPANY		GRANITE CONSTRUCTION COMPANY	
2716 GRANITE COURT		COALINGA MINE EXPANSION PROJECT	
FRESNO, CA 93706		RECLAMATION PLAN CROSS-SECTIONS	
Chang Consultants	D		
Civil Engineering/Geology/Hydrology/Sedimentation	C		
	B		
	A		
P.O. Box 506 Bakersfield, CA 93307-4896 www.changconsultants.com	T: (805) 832-0700 F: (805) 832-1182	Date:	Revision:













