

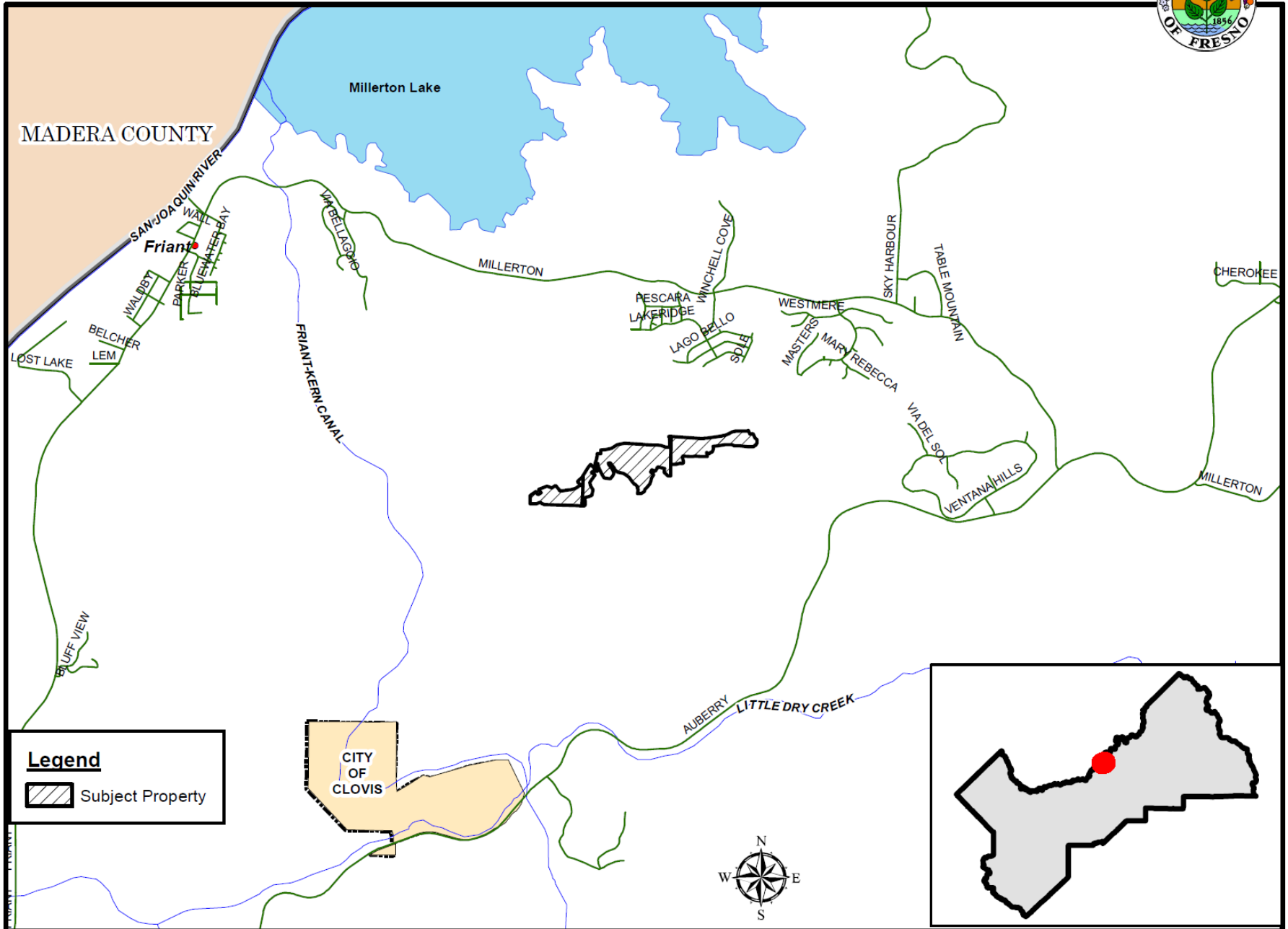


**DEPARTMENT of PUBLIC WORKS and PLANNING**  
**DEVELOPMENT SERVICES & CAPITAL PROJECTS DIVISION**


**TT 5393 EXT 1**



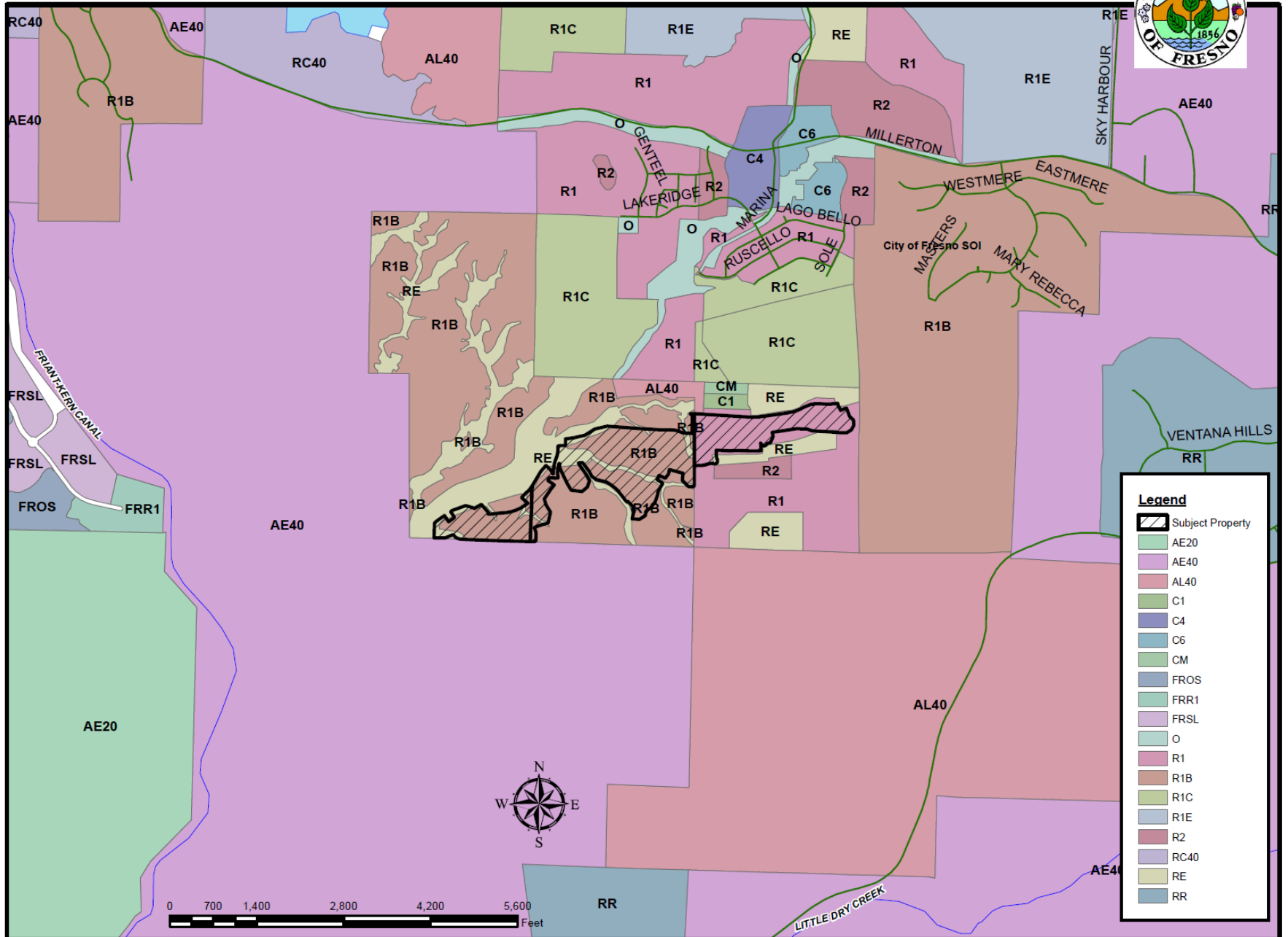
# LOCATION MAP



**Legend**

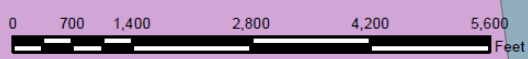
 Subject Property

# EXISTING ZONING MAP



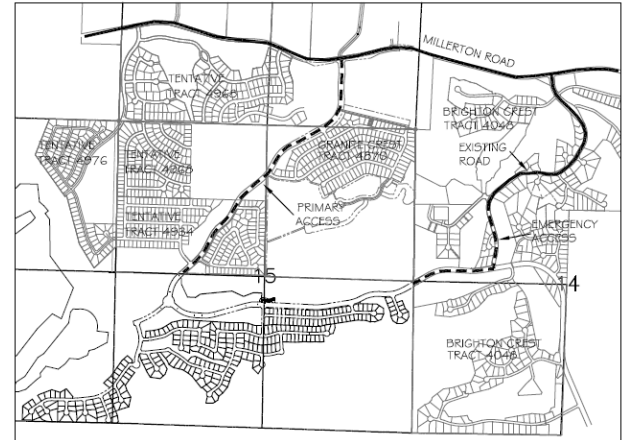
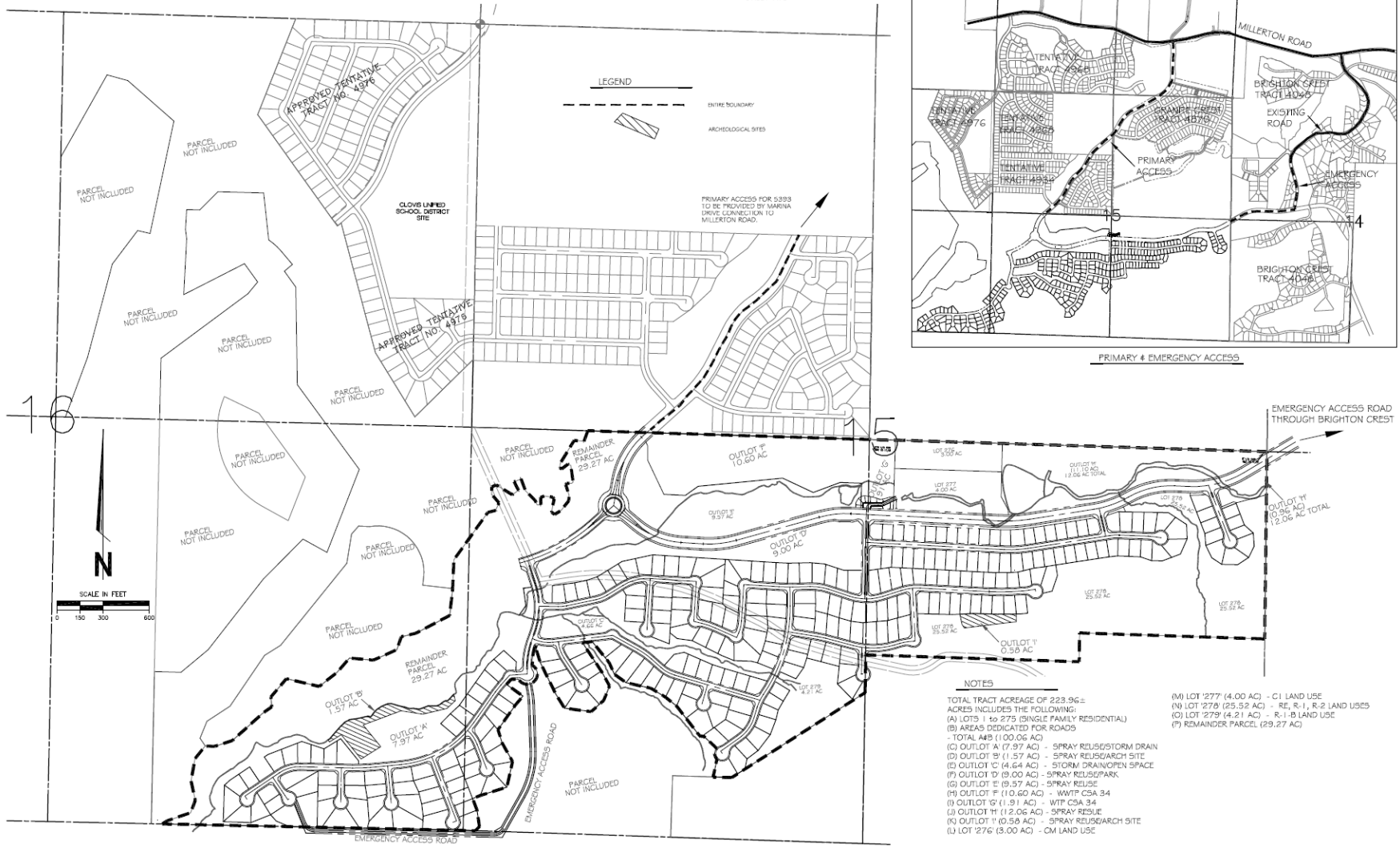
**Legend**

	Subject Property
	AE20
	AE40
	AL40
	C1
	C4
	C6
	CM
	FROS
	FRR1
	FRSL
	O
	R1
	R1B
	R1C
	R1E
	R2
	RC40
	RE
	RR



# TRACT MAP No. 5393

IN THE COUNTY OF FRESNO  
CONSISTING OF FIVE SHEETS  
SHEET TWO



- NOTES**
- TOTAL TRACT ACREAGE OF 223.96± ACRES INCLUDES THE FOLLOWING:
- (A) LOTS 1 & 275 (SINGLE FAMILY RESIDENTIAL)
  - (B) AREAS DEDICATED FOR ROADS - TOTAL A&B (100.06 AC)
  - (C) OUTLOT A (7.97 AC) - SPRAY REUSE/STORM DRAIN
  - (D) OUTLOT B (11.57 AC) - SPRAY REUSE/PARK SITE
  - (E) OUTLOT C (4.64 AC) - STORM DRAIN/OPEN SPACE
  - (F) OUTLOT D (9.00 AC) - SPRAY REUSE/PARK
  - (G) OUTLOT E (9.37 AC) - SPRAY REUSE
  - (H) OUTLOT F (110.60 AC) - WWP/ CSA 34
  - (I) OUTLOT G (1.91 AC) - WIP CSA 34
  - (J) OUTLOT H (12.06 AC) - SPRAY REUSE
  - (K) OUTLOT I (0.50 AC) - SPRAY REUSE/PARK SITE
  - (L) LOT 276 (3.00 AC) - CM LAND USE
  - (M) LOT 277 (4.00 AC) - C1 LAND USE
  - (N) LOT 278 (25.53 AC) - RE, R-1, R-2 LAND USES
  - (O) LOT 279 (4.21 AC) - R-1-B LAND USE
  - (P) REMAINDER PARCEL (29.27 AC)

**PROVOST & PRITCHARD**  
REGISTERED PROFESSIONAL ENGINEERS  
CALIFORNIA LICENSE NO. 51749-015  
1001 W. UNIVERSITY AVENUE, SUITE 200  
SANTA ANA, CALIFORNIA 92705  
714/941-1111  
www.provost.com

THE CLARKSFIELD COMPANY, INC.  
IN THE COUNTY OF FRESNO  
STATE OF CALIFORNIA  
THE MASTER'S COLLECTION AT MILLERTON 1046  
TENTATIVE TRACT MAP NO. 5393

DESIGN ENGINEER:  
DAVID MCGLASSON  
LICENSE NO.: 6569

DRAWN BY: ASB  
CHECKED BY: JTB

SCALE: 1" = 300'  
DATE: 04/28/2008  
JOB NO.: 12326301  
DWG. NO.:  
SHEET 2 OF 5

4/29/2008 11:35:02 AM G:\Users\clarksf\My Documents\Map\5393\_TTM\_OUTLITS\_4-28-08.dwg - 4848







**DEPARTMENT of PUBLIC WORKS and PLANNING**  
**DEVELOPMENT SERVICES & CAPITAL PROJECTS DIVISION**

**TT 5393 EXT 1**

