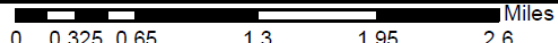
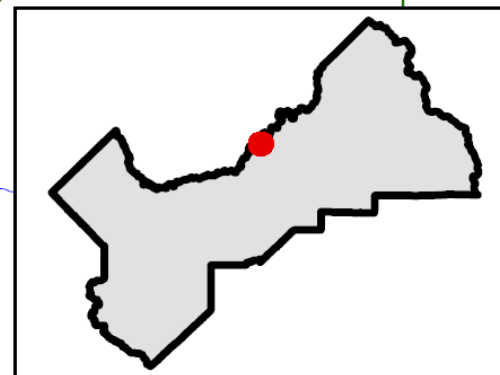
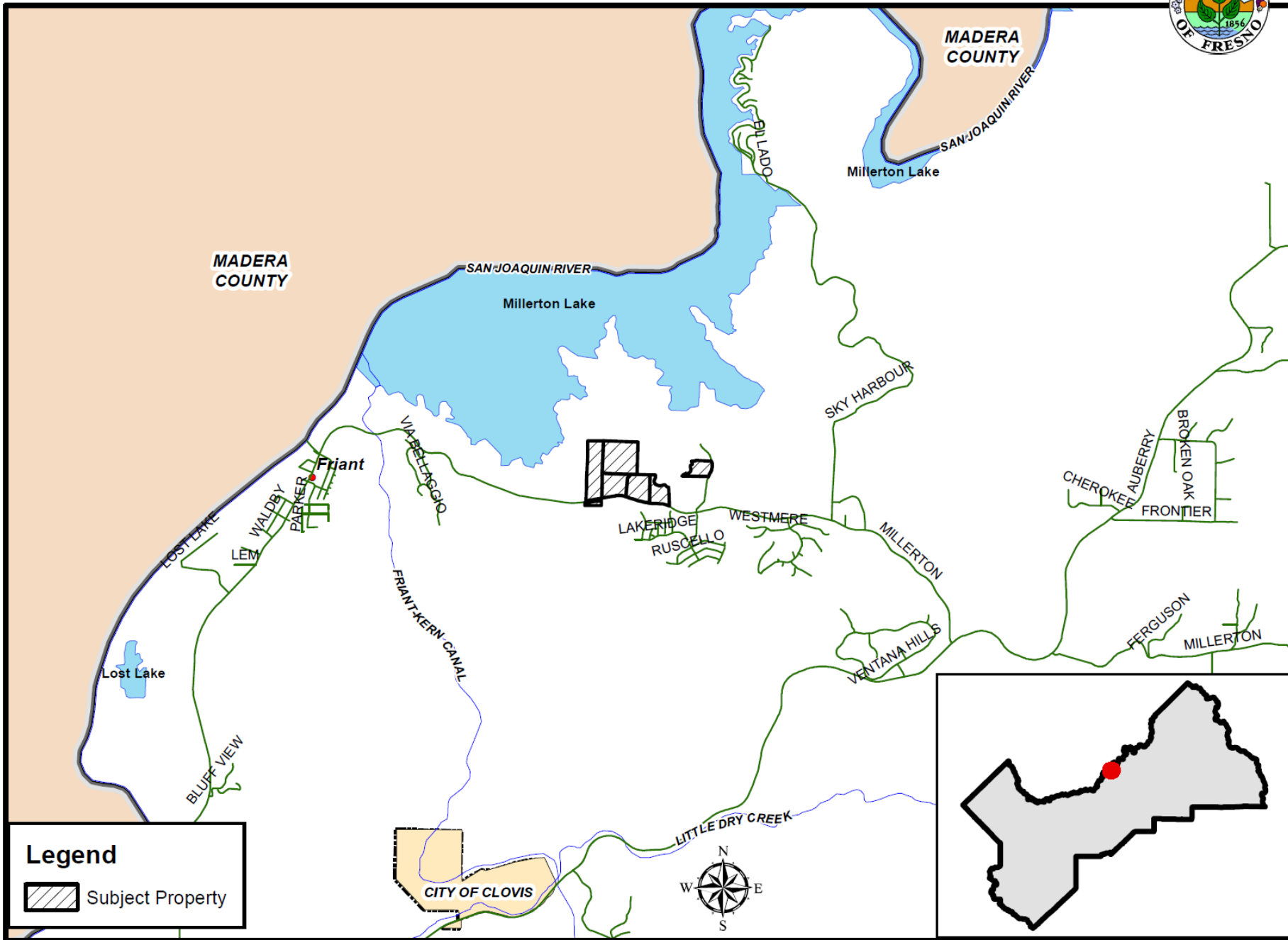


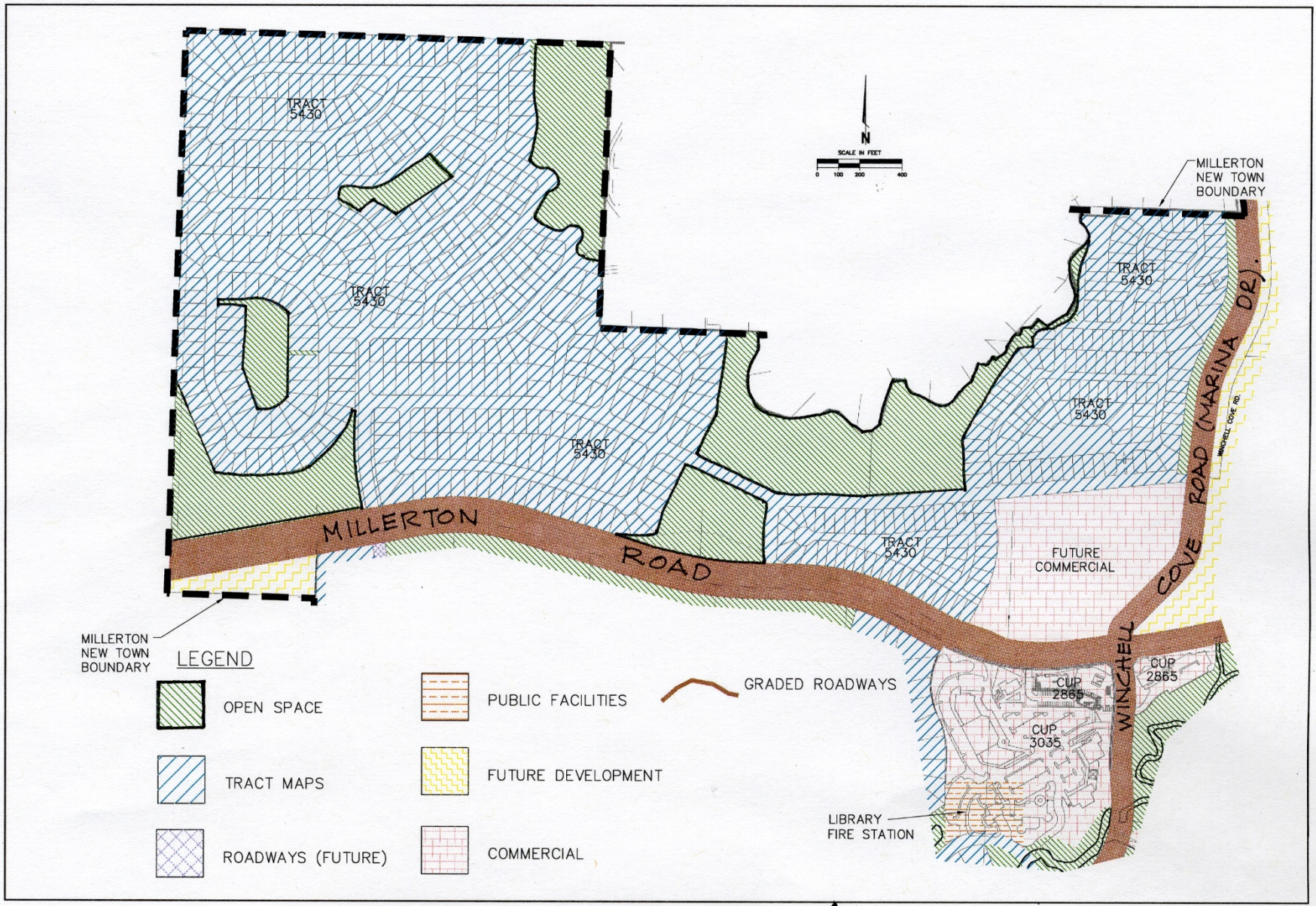


DEPARTMENT of PUBLIC WORKS and PLANNING DEVELOPMENT SERVICES DIVISION



LOCATION MAP





MILLERTON
NEW TOWN
BOUNDARY

LEGEND



OPEN SPACE



TRACT MAPS



ROADWAYS (FUTURE)



PUBLIC FACILITIES



FUTURE DEVELOPMENT



COMMERCIAL

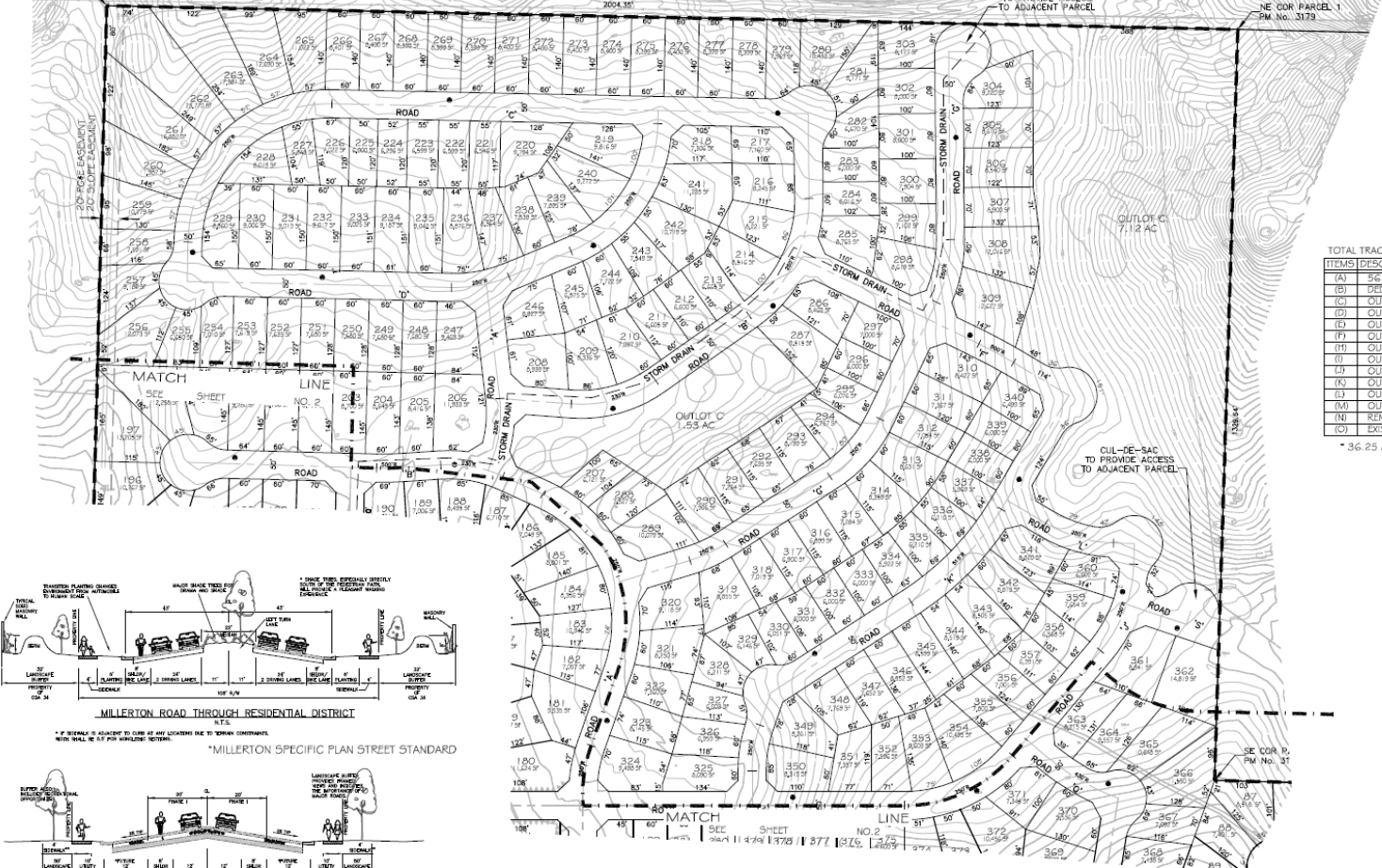


GRADED ROADWAYS

LAND USE DESIGN MAP
PROPOSED TT 5430

NW COR PARCEL 20
PM No. 3179

NE COR PARCEL 1
PM No. 3179



NOTES

TOTAL TRACT ACREAGE OF 179.57± ACRES INCLUDES THE FOLLOWING:

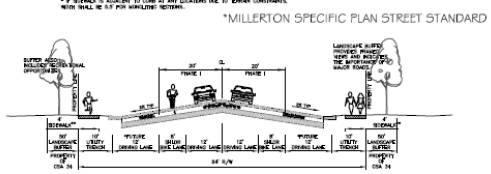
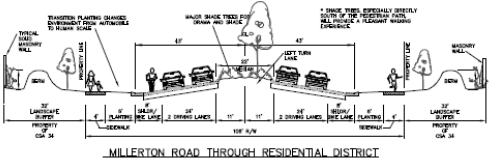
ITEMS	DESCRIPTION - LAND USE	ACRES	OWNERSHIP
(A)	361 RESIDENTIAL LOTS	1.01	HOME OWNER
(B)	DEDICATED FOR PUBLIC ROADS	132.38±	COUNTY
(C)	OUTLOT A - STORM DRAIN SPRAY RE-USE	6.76	COUNTY
(D)	OUTLOT B - PARK SPRAY RE-USE	2.34	COUNTY
(E)	OUTLOT C - PARK SPRAY RE-USE	1.53	COUNTY
(F)	OUTLOT D - SPRAY RE-USE	7.12	DEVELOPER
(H)	OUTLOT E - OPEN SPACE RE-USE	4.07	COUNTY
(I)	OUTLOT F - OPEN SPACE SPRAY RE-USE OR STORAGE	7.40	COUNTY
(J)	OUTLOT G - OPEN SPACE SPRAY RE-USE OR STORAGE	5.29	COUNTY
(K)	OUTLOT H - PRIVATE ROADS/AMMENITIES	2.27	R.O.A.
(L)	OUTLOT I - PRIVATE ROADS/AMMENITIES	3.11	R.O.A.
(M)	OUTLOT J - PRIVATE ROADS/AMMENITIES/OPEN SPACE	3.44	R.O.A.
(N)	REMAINDER OPEN SPACE	2.85	DEVELOPER
(O)	EXISTING MILLERTON RD 60-FT R.O.W.	0.98	COUNTY

* 36.25 ACRES AVAILABLE FOR SPRAY REUSE



LEGEND

- ▲▲▲▲▲ WAVEY OF DIRECT VEHICULAR ACCESS
- BOUNDARY OF TRACT
- ARCHEOLOGICAL SITES
- TO BE DEDICATED FOR ROAD PURPOSES



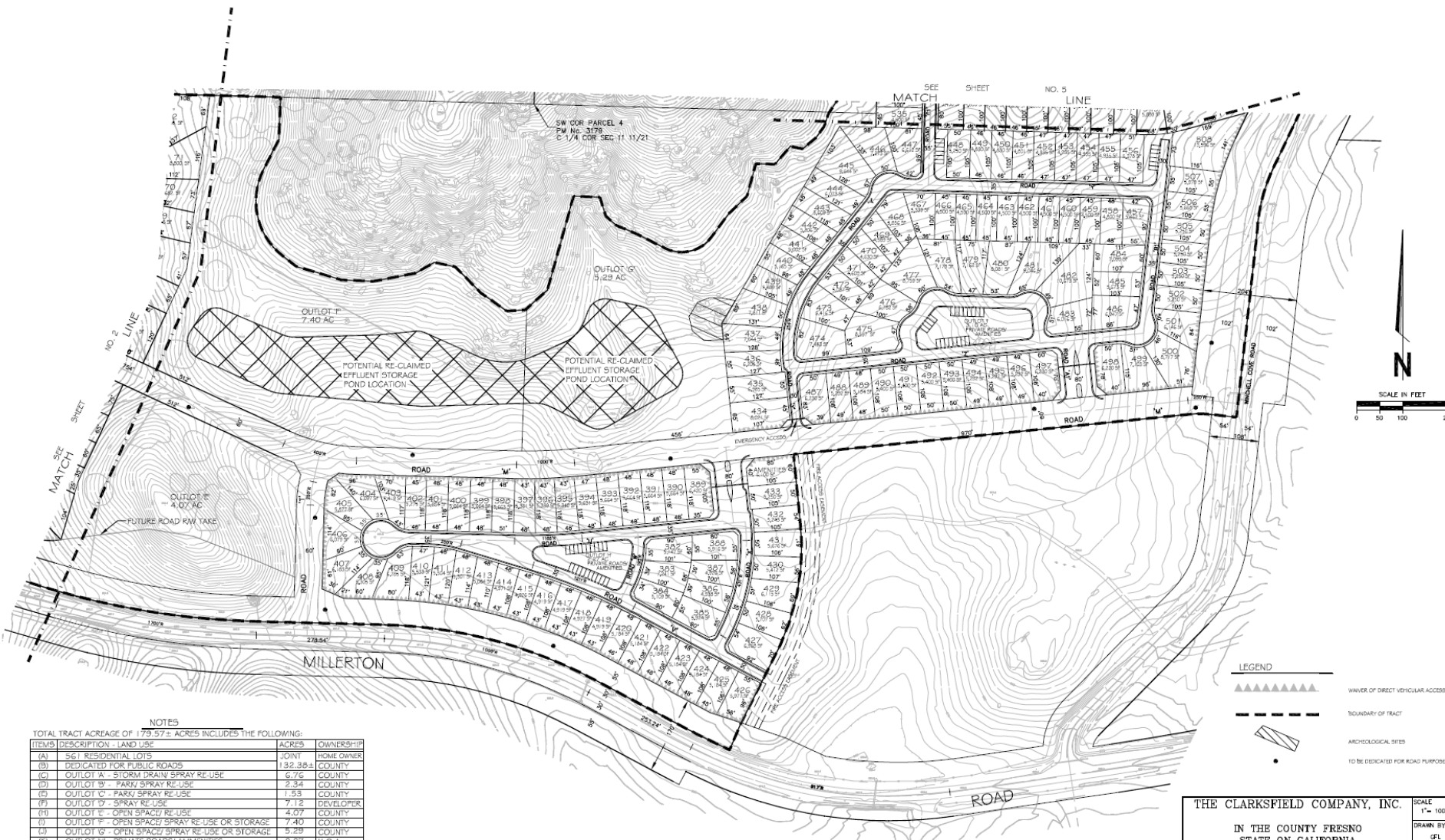
THE CLARKSFIELD COMPANY, INC.
SCALE 100'
IN THE COUNTY OF FRESNO
STATE OF CALIFORNIA
DRAWN BY GFL
LAKE RIDGE COMMUNITIES
VESTING
REVISION
TENTATIVE TRACT MAP No. 5430



DESIGN ENGINEER WILLIAM WASHINGTON
DATE 2/28/2009 C.E. LICENSE NO. 80322
SHEET 3 OF 3

Job No. 13244301
Dwg. No. 20540713

Date Revised
Approval



NOTES

TOTAL TRACT ACREAGE OF 179.57± ACRES INCLUDES THE FOLLOWING:

ITEMS	DESCRIPTION - LAND USE	ACRES	OWNERSHIP
(A)	561 RESIDENTIAL LOTS	132.384	JOINT HOME OWNER COUNTY
(B)	DEDICATED FOR PUBLIC ROADS	6.76	COUNTY
(C)	OUTLOT A - STORM DRAIN/ SPRAY RE-USE	2.34	COUNTY
(D)	OUTLOT B - PARKY SPRAY RE-USE	1.53	COUNTY
(E)	OUTLOT C - PARKY SPRAY RE-USE	7.12	DEVELOPER
(F)	OUTLOT D - SPRAY RE-USE	4.07	COUNTY
(H)	OUTLOT E - OPEN SPACE/ RE-USE	7.40	COUNTY
(I)	OUTLOT F - OPEN SPACE/ SPRAY RE-USE OR STORAGE	5.29	COUNTY
(J)	OUTLOT G - OPEN SPACE/ SPRAY RE-USE OR STORAGE	2.27	H.O.A.
(K)	OUTLOT H - PRIVATE ROADS/ AMMENITIES	3.11	H.O.A.
(L)	OUTLOT I - PRIVATE ROADS/ AMMENITIES	3.44	H.O.A.
(M)	OUTLOT J - PRIVATE ROADS/ AMMENITIES/ OPEN SPACE	2.80	DEVELOPER
(N)	REMANINDER - OPEN SPACE	0.95	COUNTY
(O)	EXISTING MILLERTON RD 60-FT R.O.W.		

* 36.25 ACRES AVAILABLE FOR SPRAY REUSE

LEGEND

	WAVES OF DIRECT VEHICULAR ACCESS
	BOUNDARY OF TRACT
	ARCHEOLOGICAL SITES
	TO BE DEDICATED FOR ROAD PURPOSES

THE CLARKSFIELD COMPANY, INC. SCALE 1" = 100'

IN THE COUNTY FRESNO DRAWN BY GFL

STATE OF CALIFORNIA REVISION

LAKE RIDGE COMMUNITIES VESTING

TENTATIVE TRACT MAP NO. 5430

DESIGN ENGINEER: WILLIAM WASHINGTON SHEET 4 OF 5

DATE: 2/28/2008 C.E. LICENSE NO. 65322

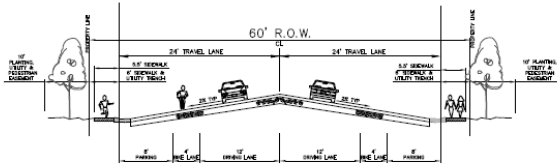
DATE REVISED SHEET

Drawn: Approved SHEETS

Dep. No. 20040713 Approved

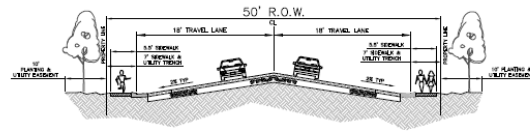
PROVOST & PRITCHARD

16101 CHINA AVE
 FRESNO, CALIFORNIA 93727
 (559) 435-1000 FAX (559) 435-1001
 www.provostpritchard.com



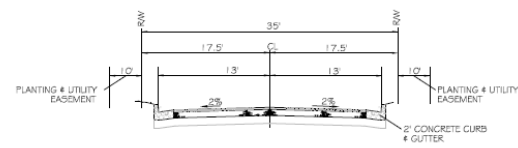
COLLECTOR STREET - 60' R.O.W.
NTS

*MILLERTON SPECIFIC PLAN STREET STANDARD

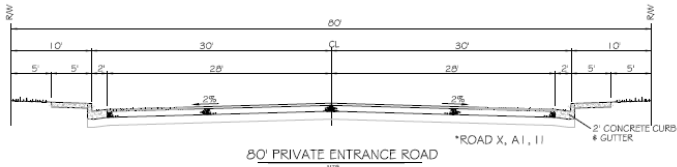
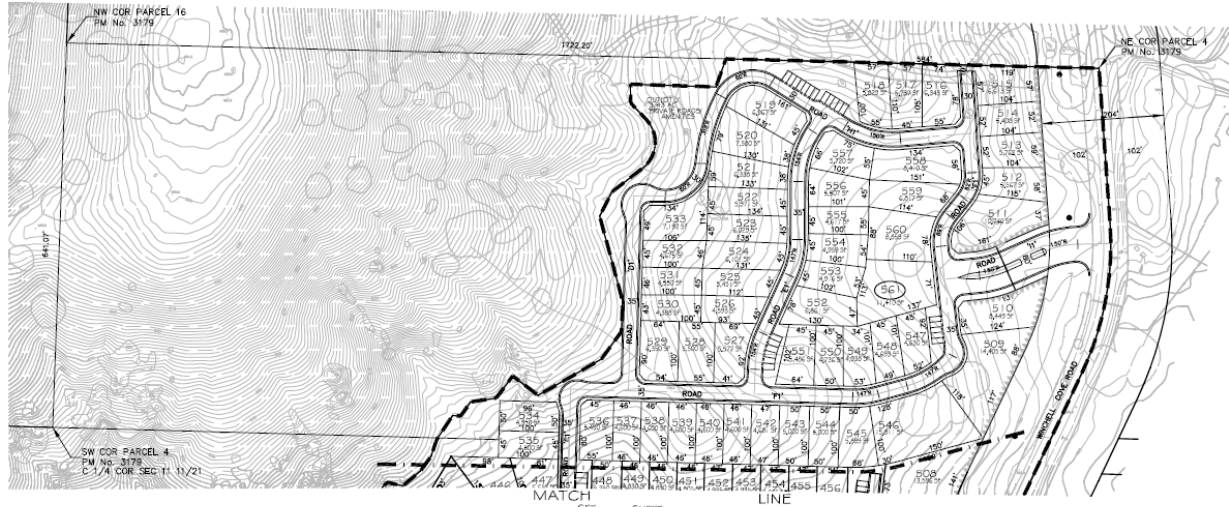


LOCAL RESIDENTIAL STREET - 50' R.O.W.
SERIAL 11 OF WORK UNITS

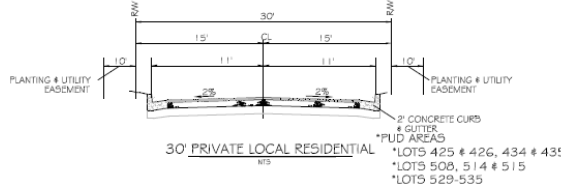
*MILLERTON SPECIFIC PLAN STREET STANDARD



35' PRIVATE LOCAL RESIDENTIAL
NTS



80' PRIVATE ENTRANCE ROAD
NTS



30' PRIVATE LOCAL RESIDENTIAL
NTS

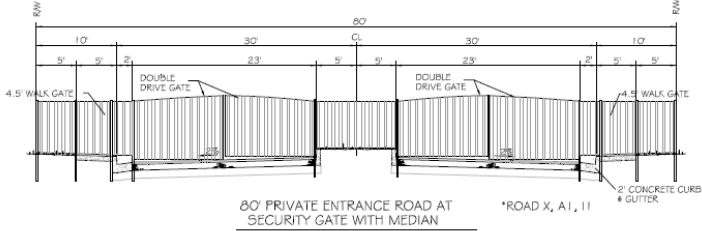
*PUD AREA
*LOTS 425 & 426, 434 & 435
*LOTS 508, 514 & 515
*LOTS 529-535

NOTES

TOTAL TRACT ACRES OF 179.57= ACRES INCLUDES THE FOLLOWING:

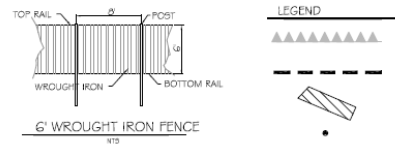
ITEMS (DESCRIPTION - LAND USE)	ACRES	OWNERSHIP
(A) 56.1 RESIDENTIAL LOTS	132.38	JOINT HOME OWNER COUNTY
(B) DEDICATED FOR PUBLIC ROADS	6.76	COUNTY
(C) OUTLOT A - STORM DRAIN SPRAY RE-USE	2.34	COUNTY
(D) OUTLOT B - PARKY SPRAY RE-USE	1.53	COUNTY
(E) OUTLOT C - PARKY SPRAY RE-USE	7.12	DEVELOPER
(F) OUTLOT D - SPRAY RE-USE	4.07	COUNTY
(G) OUTLOT E - OPEN SPACE/RE-USE	7.40	COUNTY
(H) OUTLOT F - OPEN SPACE/RE-USE OR STORAGE	2.27	H.O.A.
(I) OUTLOT G - OPEN SPACE/RE-USE OR STORAGE	3.11	H.O.A.
(J) OUTLOT H - PRIVATE ROADS/ AMMENITIES	3.44	H.O.A.
(K) OUTLOT I - PRIVATE ROADS/ AMMENITIES	3.44	H.O.A.
(L) OUTLOT J - PRIVATE ROADS/ AMMENITIES	0.98	COUNTY
(M) REMAINDER - OPEN SPACE		
(N) EXISTING MILLERTON RD 50-FT R.O.W.		

* 36.25 ACRES AVAILABLE FOR SPRAY REUSE



80' PRIVATE ENTRANCE ROAD AT SECURITY GATE WITH MEDIAN
NTS

*ROAD X, A, 1, 11



6' WROUGH IRON FENCE
NTS

THE CLARKSFIELD COMPANY, INC. SCALE 1" = 100'

IN THE COUNTY FRESNO STATE OF CALIFORNIA DRAWN BY GFL

LAKE RIDGE COMMUNITIES VESTING REVIEWED

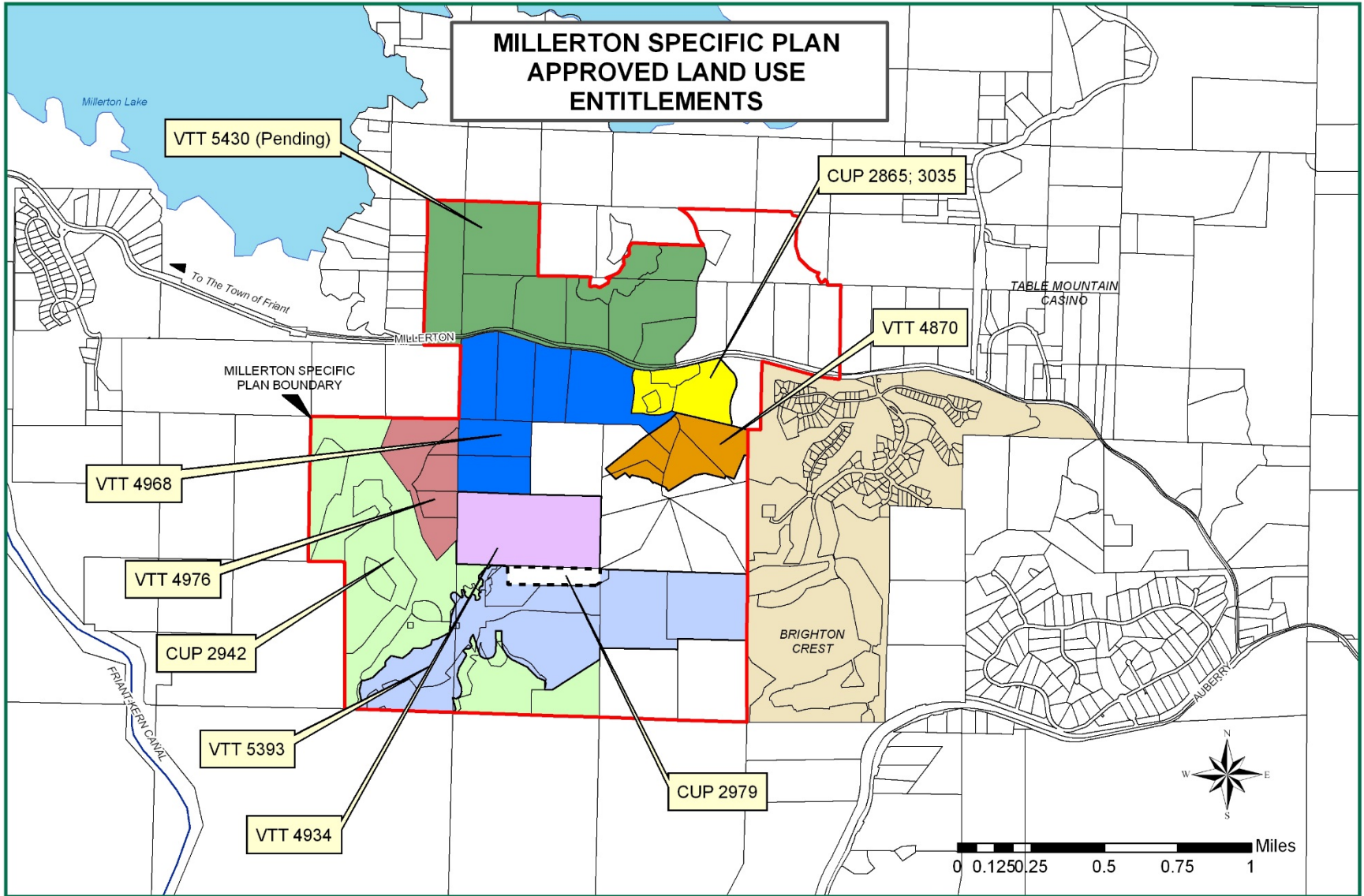
TENTATIVE TRACT MAP NO. 5430 SHEET 5 OF 5

DESIGN ENGINEER WILLIAM WASHINGTON DATE 2/28/2008 C.E. LICENSE NO. 62392

PROVOST & BRITCHARD
300 WEST MARKET AVENUE
FRESNO, CALIFORNIA 93701
PHONE: 559-261-2200
WWW.PRB.COM

Job No. 13244307 Date Revised
Dwg. No. 20040713 Approval

MILLERTON SPECIFIC PLAN APPROVED LAND USE ENTITLEMENTS



Yellow Conditional Use Permit No. 2865
(Approved By B/S: 4-20-99)
Conditional Use Permit No. 3035
(Approved By B/S: 12-7-04)

Orange Vesting Tentative Tract No. 4870
(Approved By PC: 2-3-00) (165 Lots)

Green Vesting Tentative Tract No. 5430 (Pending) (561 Lots)

Purple Vesting Tentative Tract No. 4934
(Approved By PC: 9-7-00) (200 Lots)

Red Vesting Tentative Tract No. 4976
(Approved By PC: 11-30-00) (184 Lots)

Blue Vesting Tentative Tract No. 4968
(Approved By PC: 12-14-00) (308 Lots)

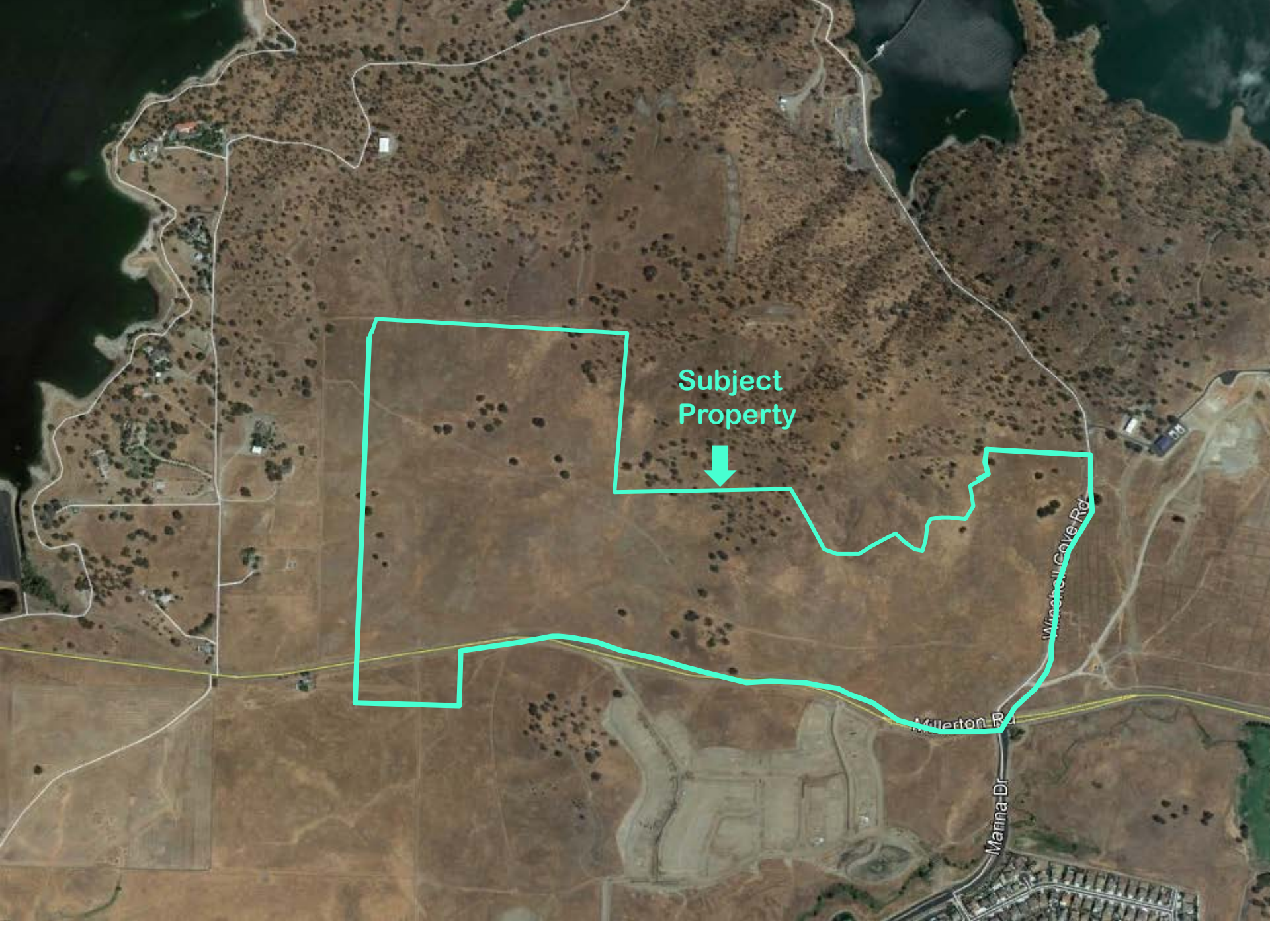
Dashed Line Conditional Use Permit No. 2979
(Approved by PC: 10-09-03)

Light Green Conditional Use Permit No. 2942
(Approved by PC: 9-07-00)

Light Blue Vesting Tentative Tract No. 5393
(Approved by PC: 5-08-08)
(275 Res. Lots) (2 Comm. Lots)

Department of Public Works and Planning
Development Services Division

Map Prepared by: JHernandez
J:\GIS\CHP\Project2010\millerton.mxd



Subject
Property



Millerton Rd

Marina Dr

Winchell Cove Rd