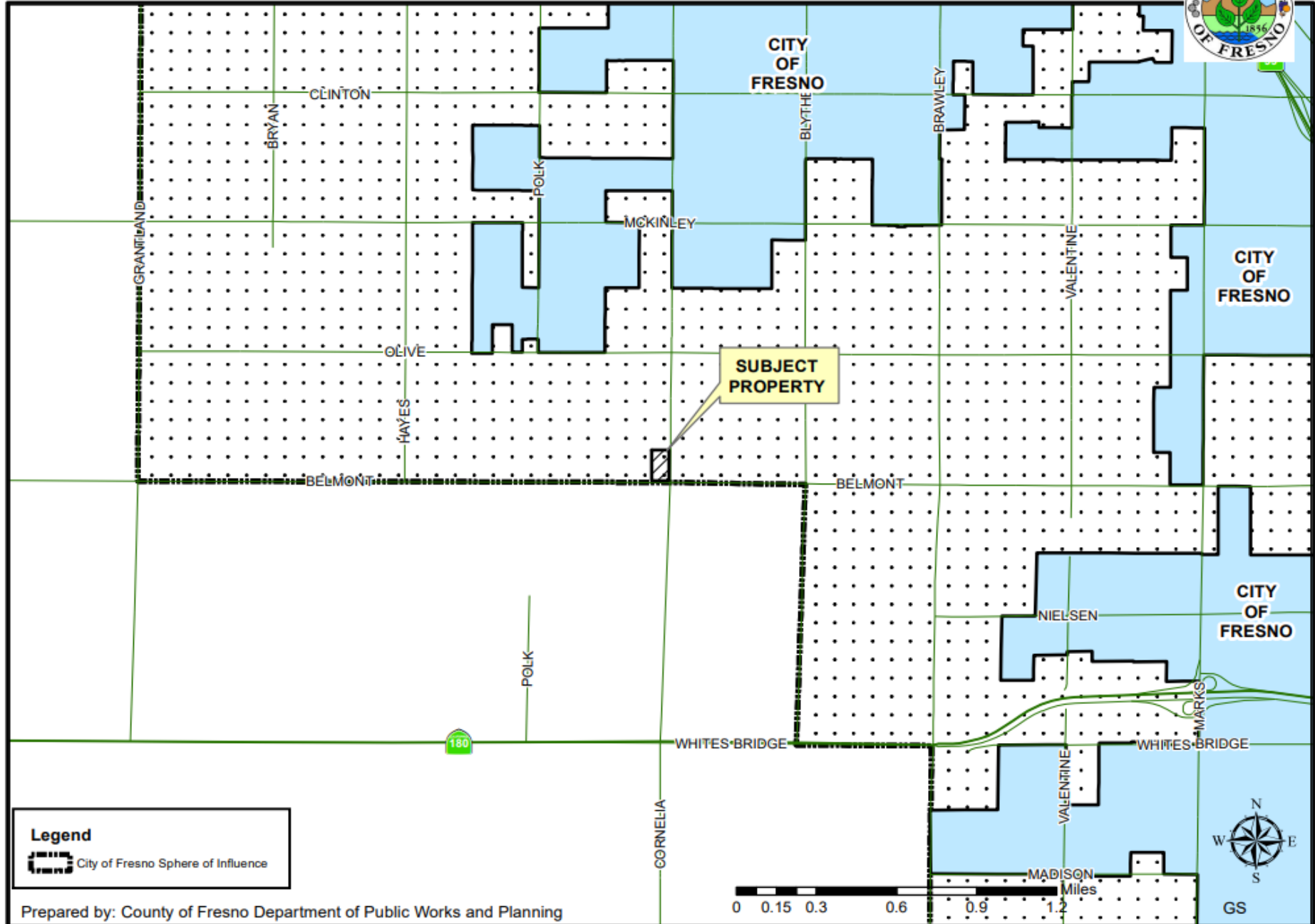




DEPARTMENT of PUBLIC WORKS and PLANNING
DEVELOPMENT SERVICES DIVISION



LOCATION MAP



Legend

City of Fresno Sphere of Influence

CUP 3655

**PROJECT SITE
(4.99 ACRES)**



**Area Of
Proposed
Development
(1.78 ACRES)**

- Legend**
- 5064 W Belmont Ave
 - DDK Mobile Diesel Repair
 - Dycora Transitional Health - Memory Care?

5064 W Belmont Ave

Cornellia Ave

Belmont Ave.

Belmont Ave

Belmont Ave

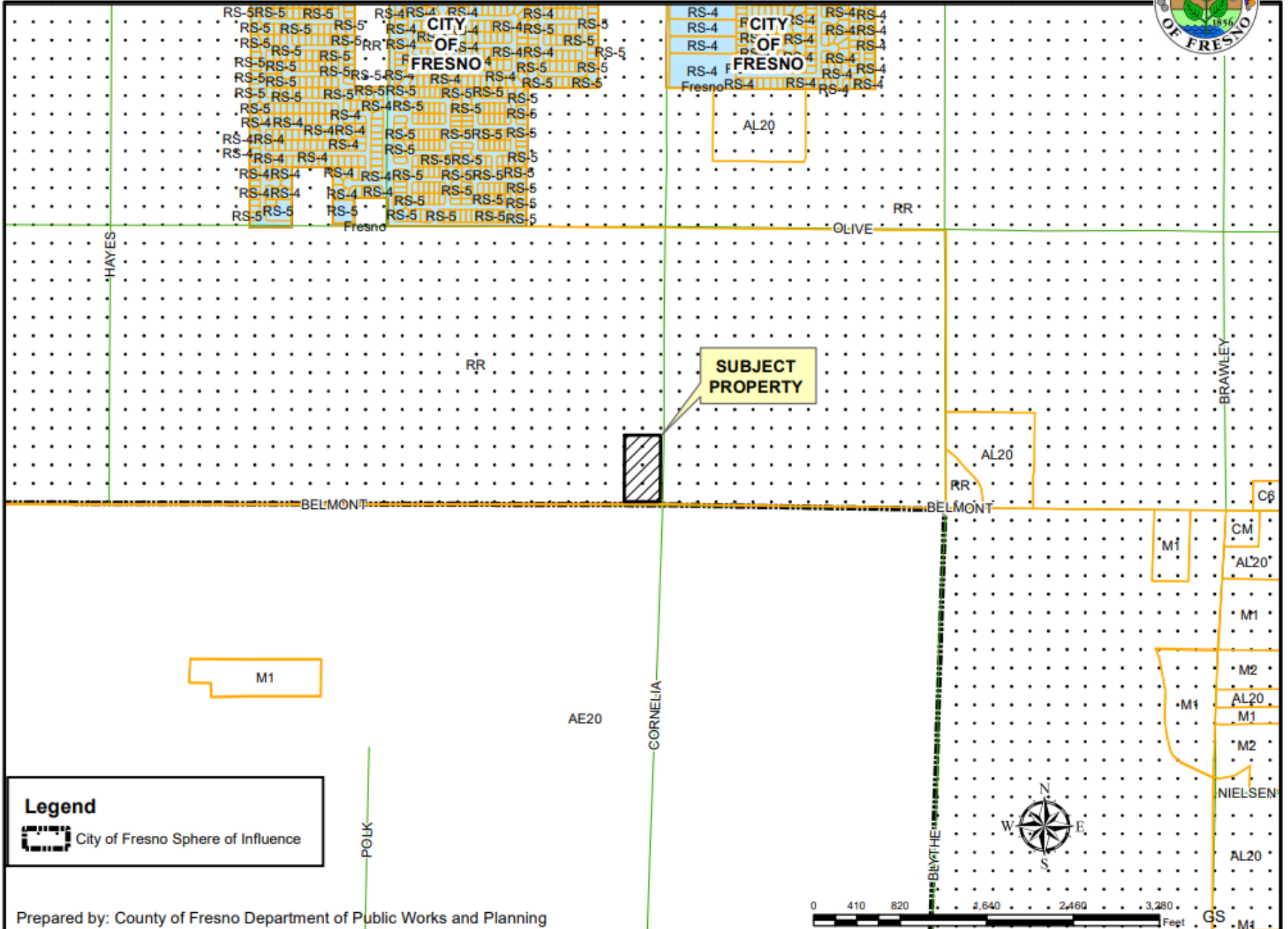
Dycora Transitional Health - Memory Care

Google Earth

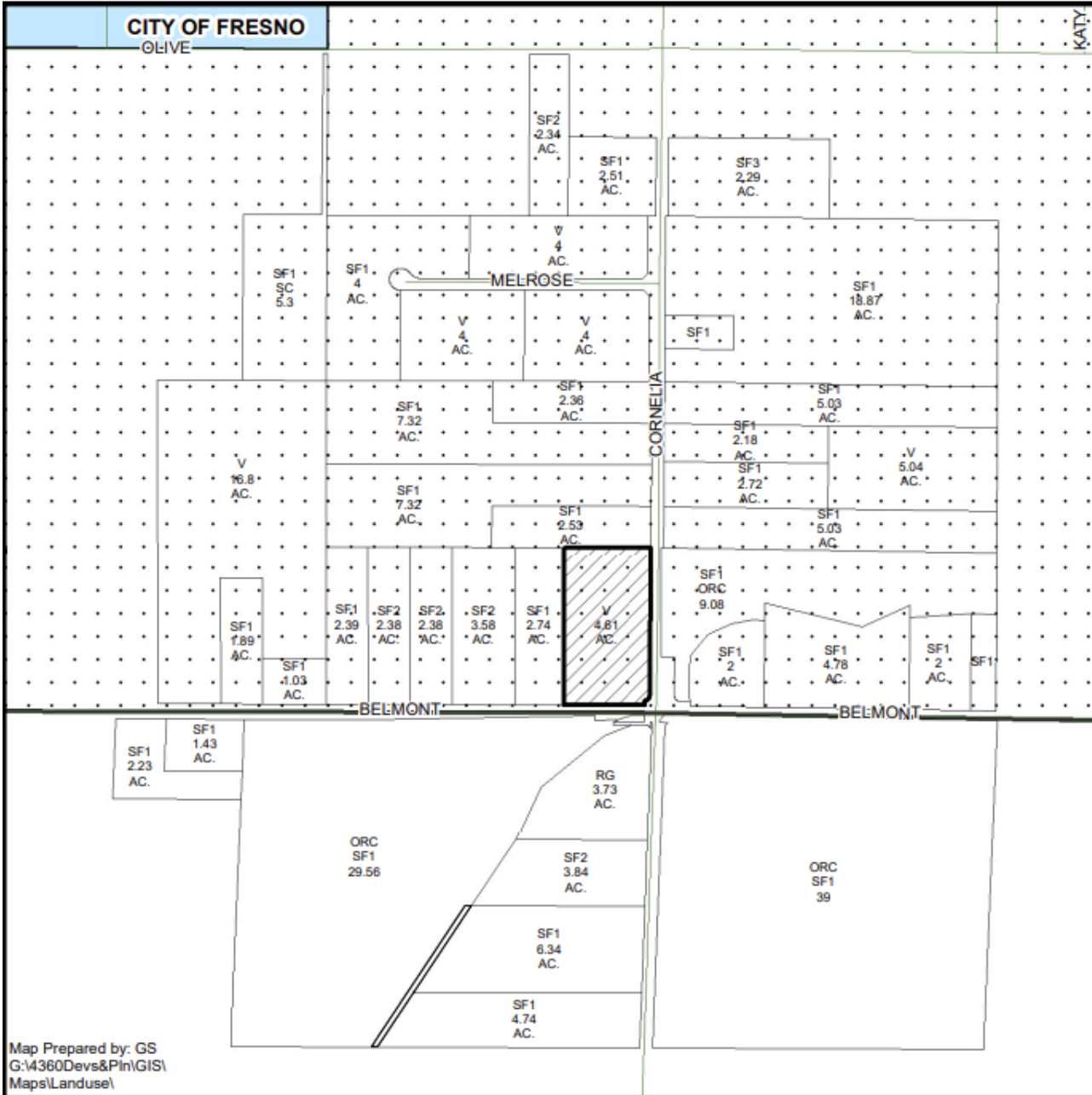
300 ft




EXISTING ZONING MAP

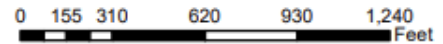


EXISTING LAND USE MAP

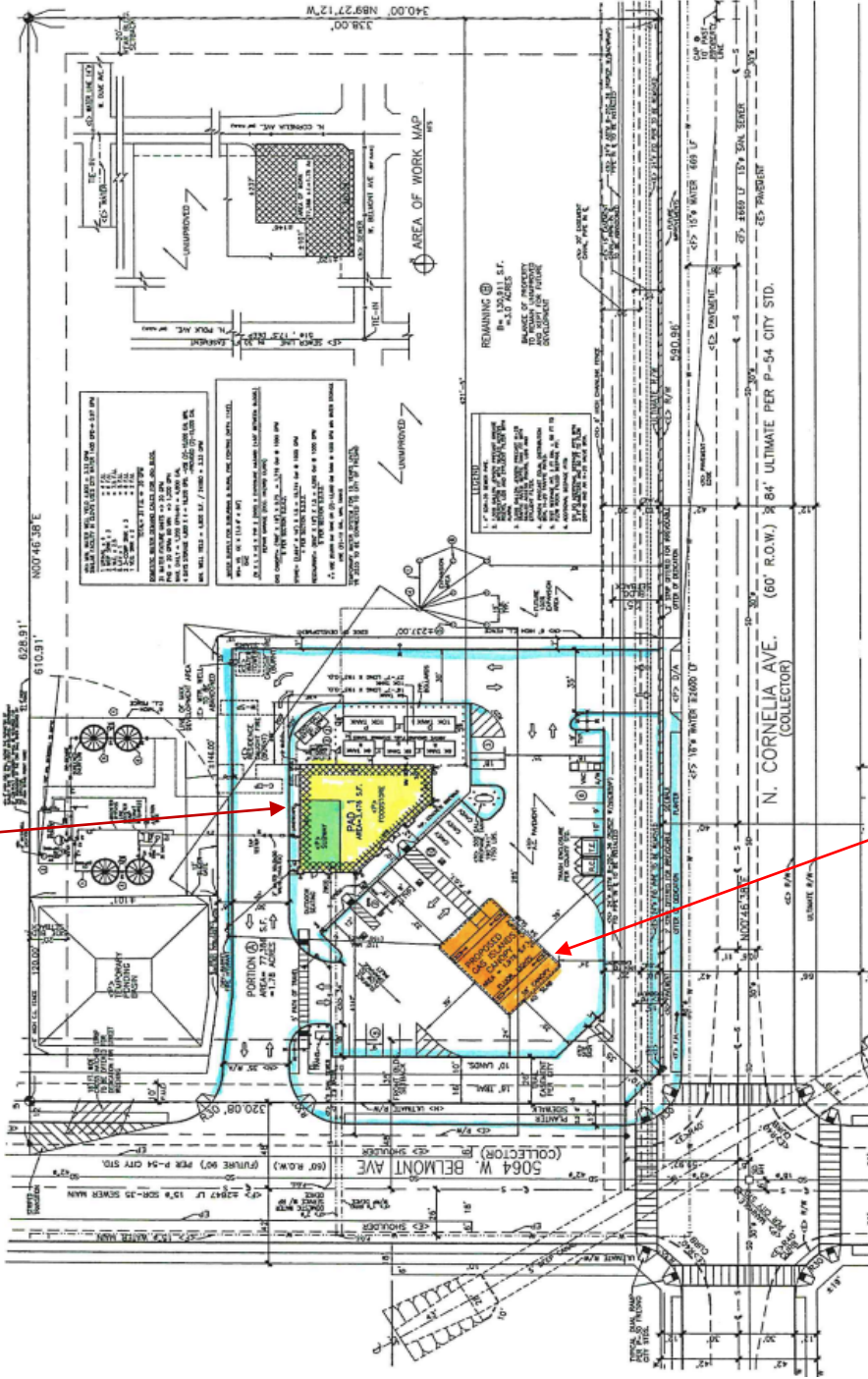


LEGEND	
ORC	- ORCHARD
RG	- RESIDENTIAL GROUP FACILITY
SC	- SEASONAL CROP
SF#	- SINGLE FAMILY RESIDENCE
V	- VACANT

LEGEND:
 Subject Property

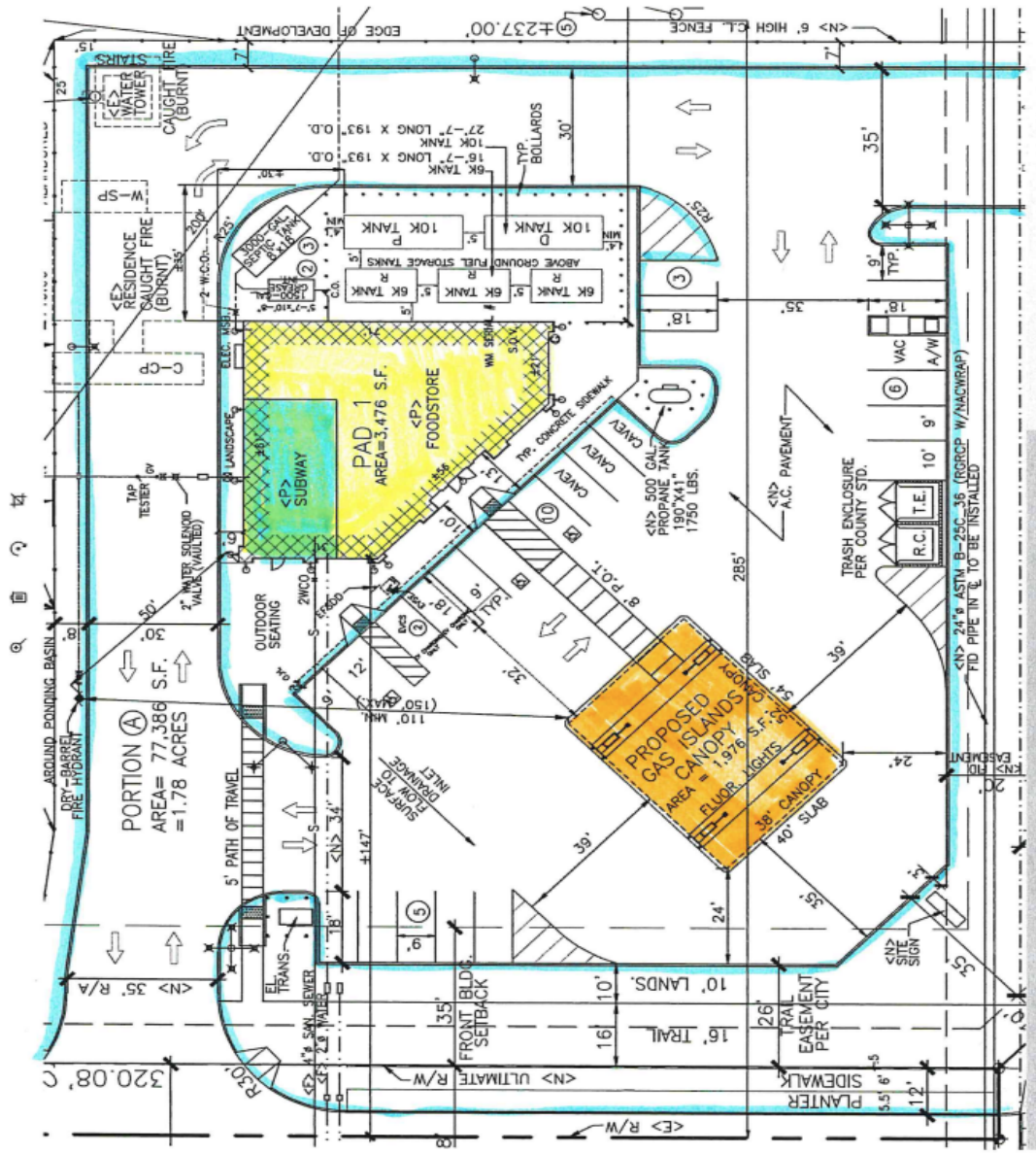


Convenience
Store/Fast-Food
Restaurant (P)



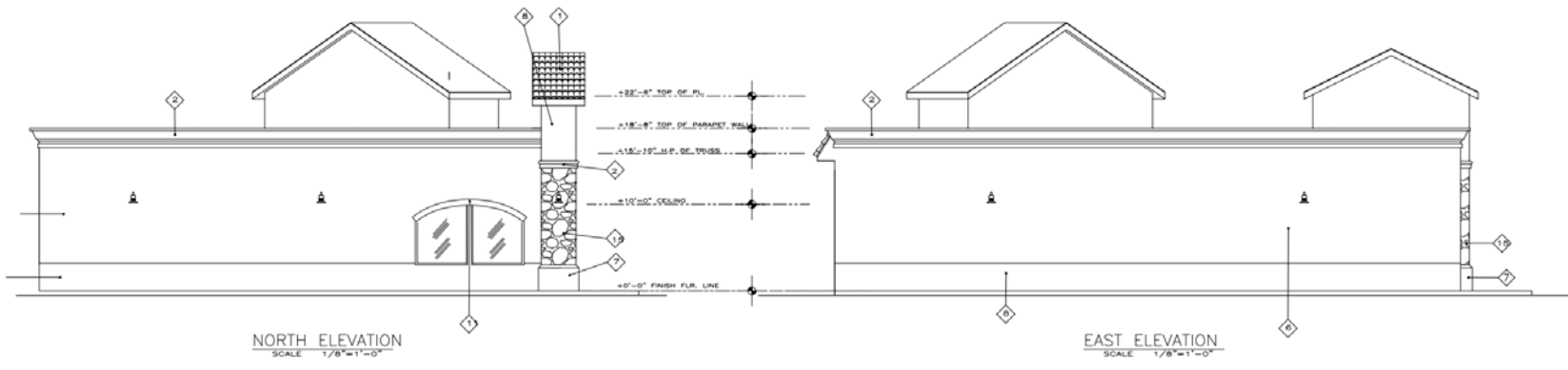
Gasoline
Fueling Facility





W. BELMONT AVE

N. CORNELIA AVE.



NORTH ELEVATION
SCALE 1/8"=1'-0"

EAST ELEVATION
SCALE 1/8"=1'-0"

CUP 3655

Legend

- 📍 5064 W Belmont Ave
- 📍 DDK Mobile Diesel Repair
- 📍 Dycora Transitional Health - Memory Care?

Project Site



BELMONT AVE

CORNELIA AVE



CUP 3655

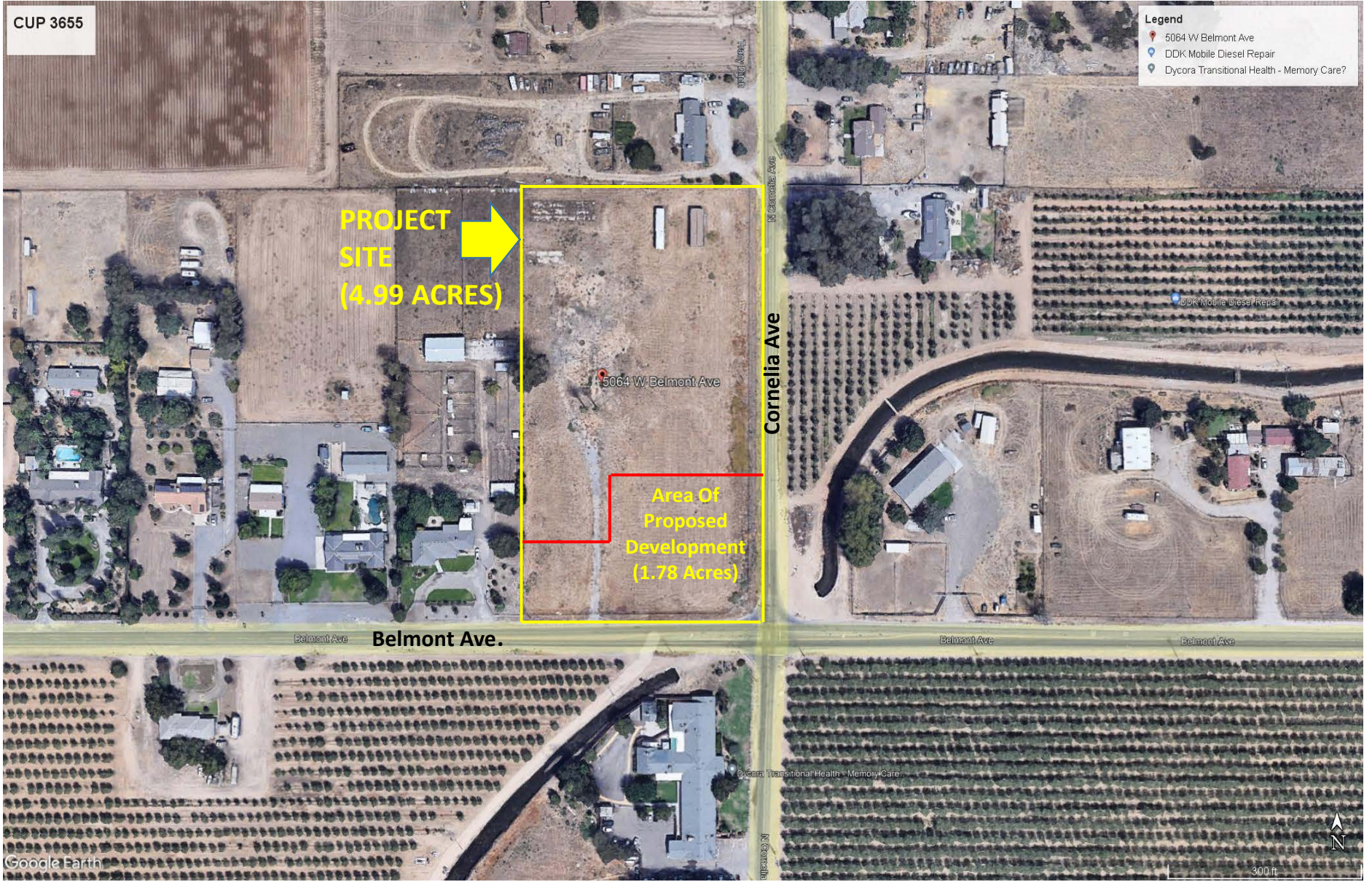
**PROJECT SITE
(4.99 ACRES)**



**Area Of
Proposed
Development
(1.78 Acres)**

Legend

- 5064 W Belmont Ave
- DDK Mobile Diesel Repair
- Dycora Transitional Health - Memory Care?





DEPARTMENT of PUBLIC WORKS and PLANNING
DEVELOPMENT SERVICES DIVISION



CUP 3655

CUP 3655

Project Site



5064 W Belmont Ave

DDK Mobile Diesel Repair

ONE MILE

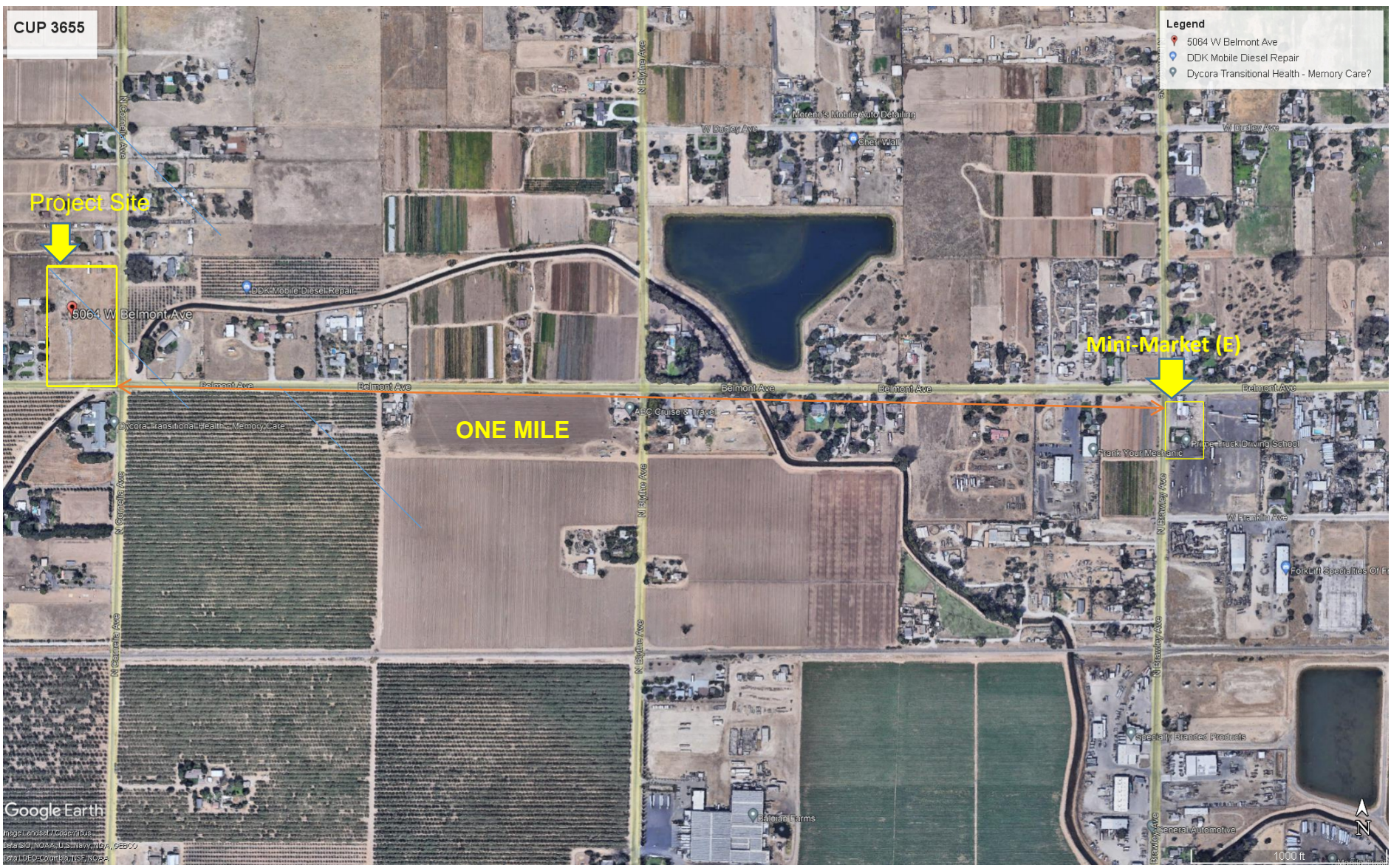
Mini-Market (E)

- Legend**
- 5064 W Belmont Ave
 - DDK Mobile Diesel Repair
 - Dycora Transitional Health - Memory Care?

Google Earth

Image Landsat/Coverdous
Data SIO/NOAA/US Navy/NOAA/OPDOO
Data/DEPOCON/USFIS/NOAA

1000 ft



CUP 3655

- Legend**
- 5064 W Belmont Ave
 - DDK Mobile Diesel Repair
 - Dycora Transitional Health - Memory Care?



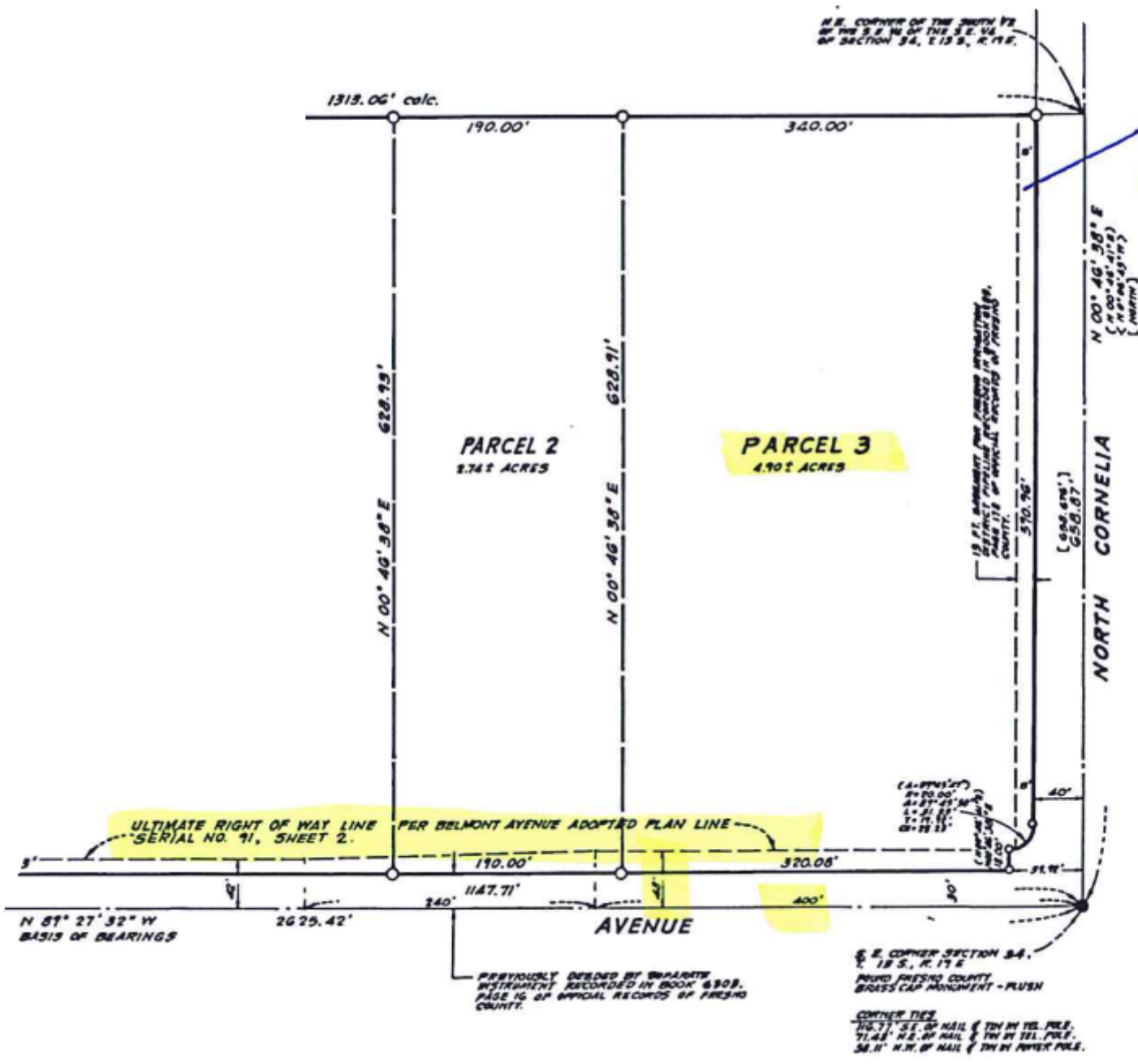
Mini-Market at Belmont and Brawley Avenues
(One Mile East of the Project Site)

Project Site



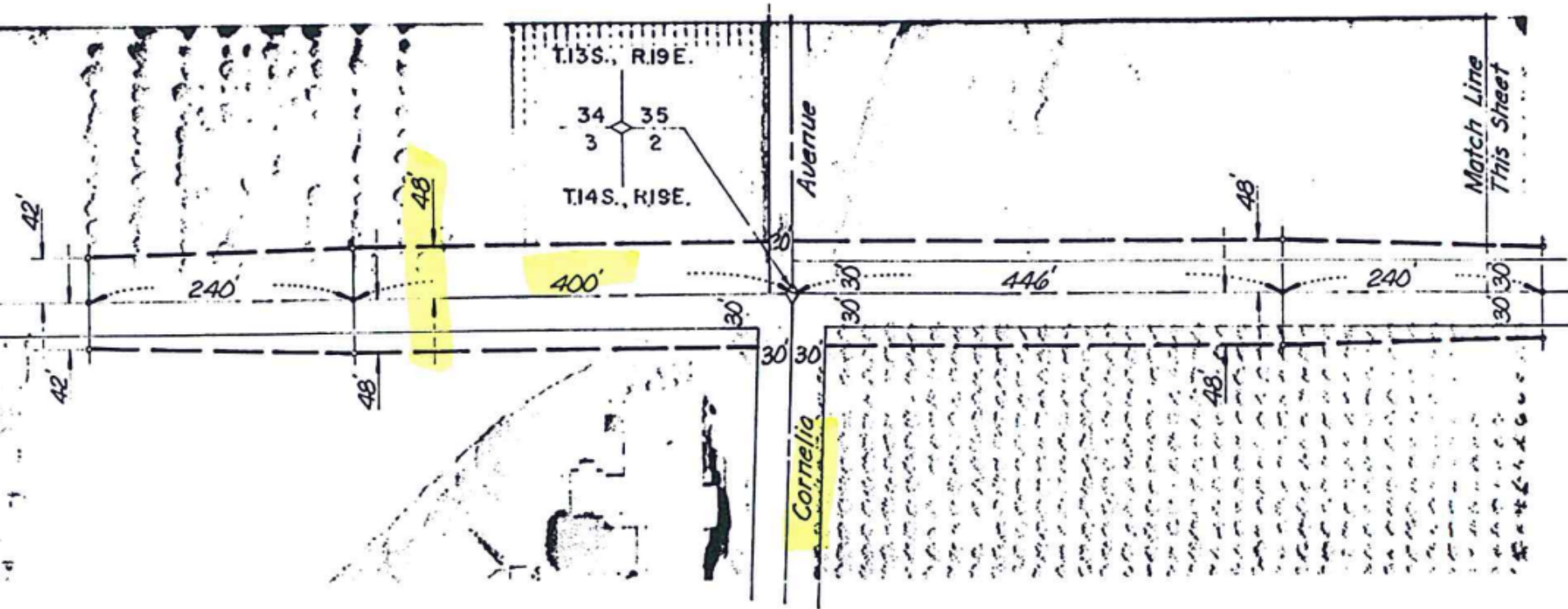
5746 W. Belmont Ave.

Distance between the residence and the project site is 0.75 mile



EX 15' FID
EASEMENT

DATE FLOWN 5-5-70



SPECIFIC PLAN LINES
BELMONT AVENUE
SERIAL NO. 91