



DEPARTMENT of PUBLIC WORKS and PLANNING
DEVELOPMENT SERVICES DIVISION

CUP 3725



EXHIBIT 2
LOCATION MAP

CUP 3725

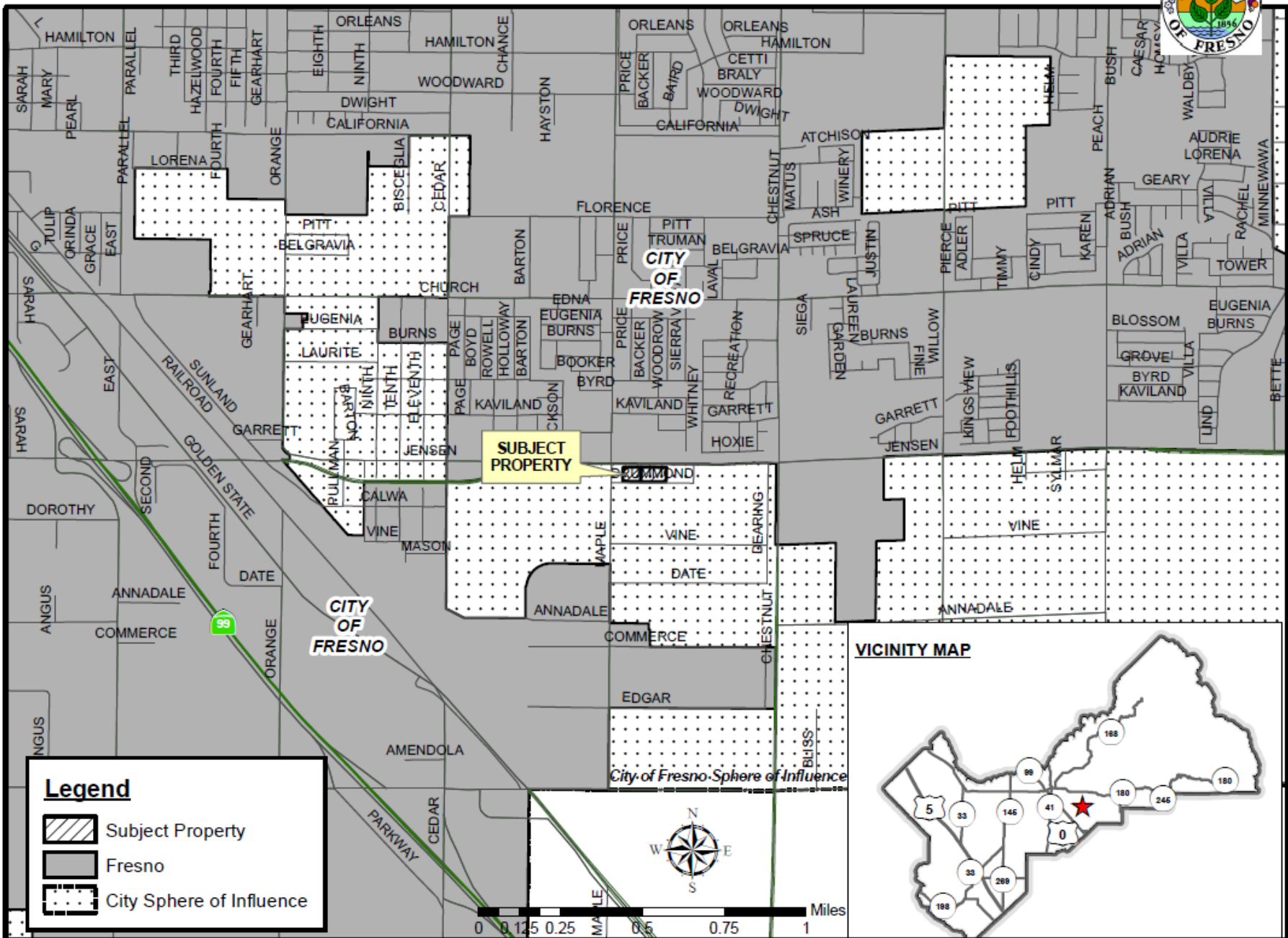
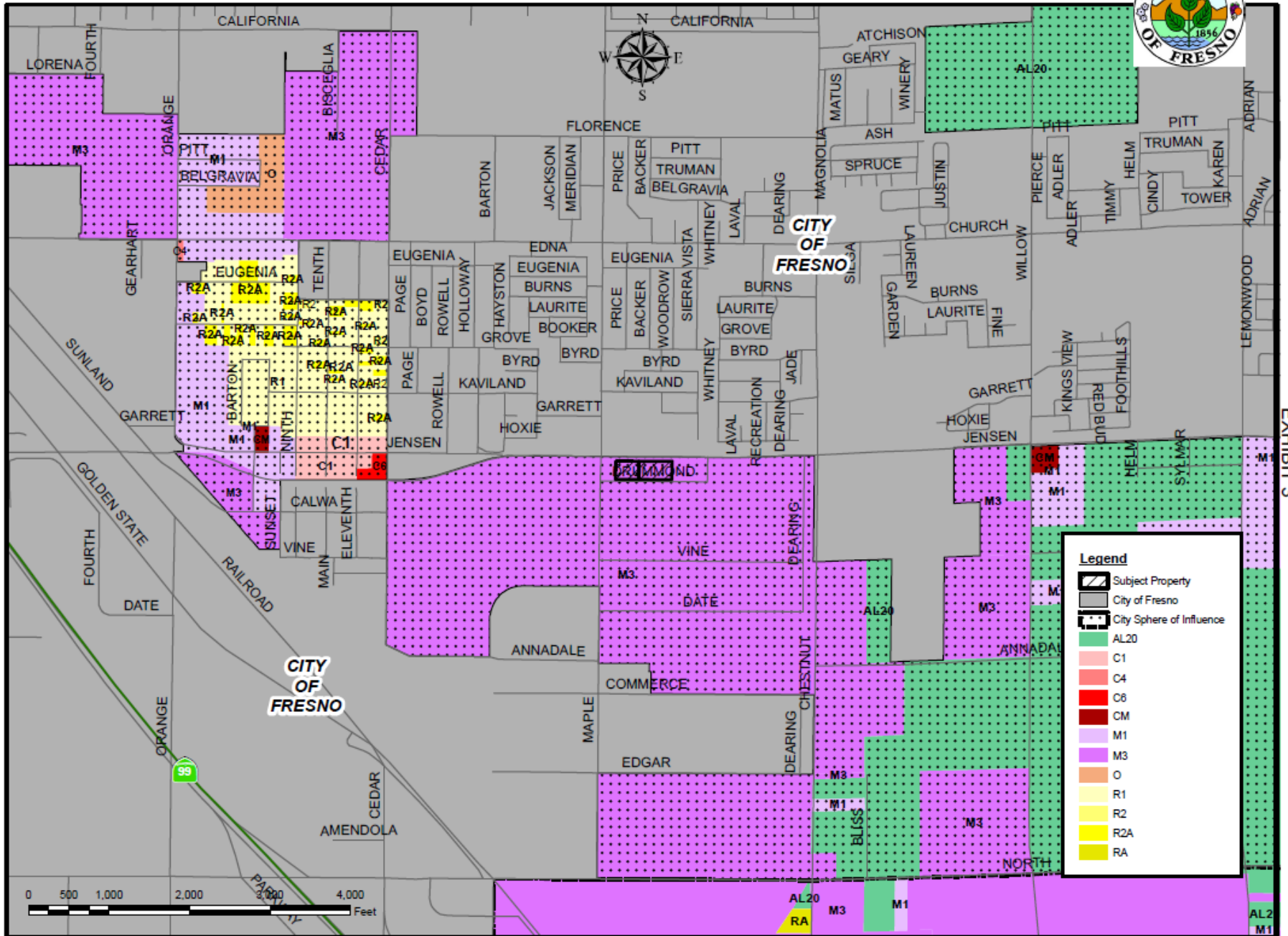




EXHIBIT 3
EXISTING ZONING MAP



AA

Q  ibc tote



 IBC Tanks

275 Gallon New IBC Tote

Visit

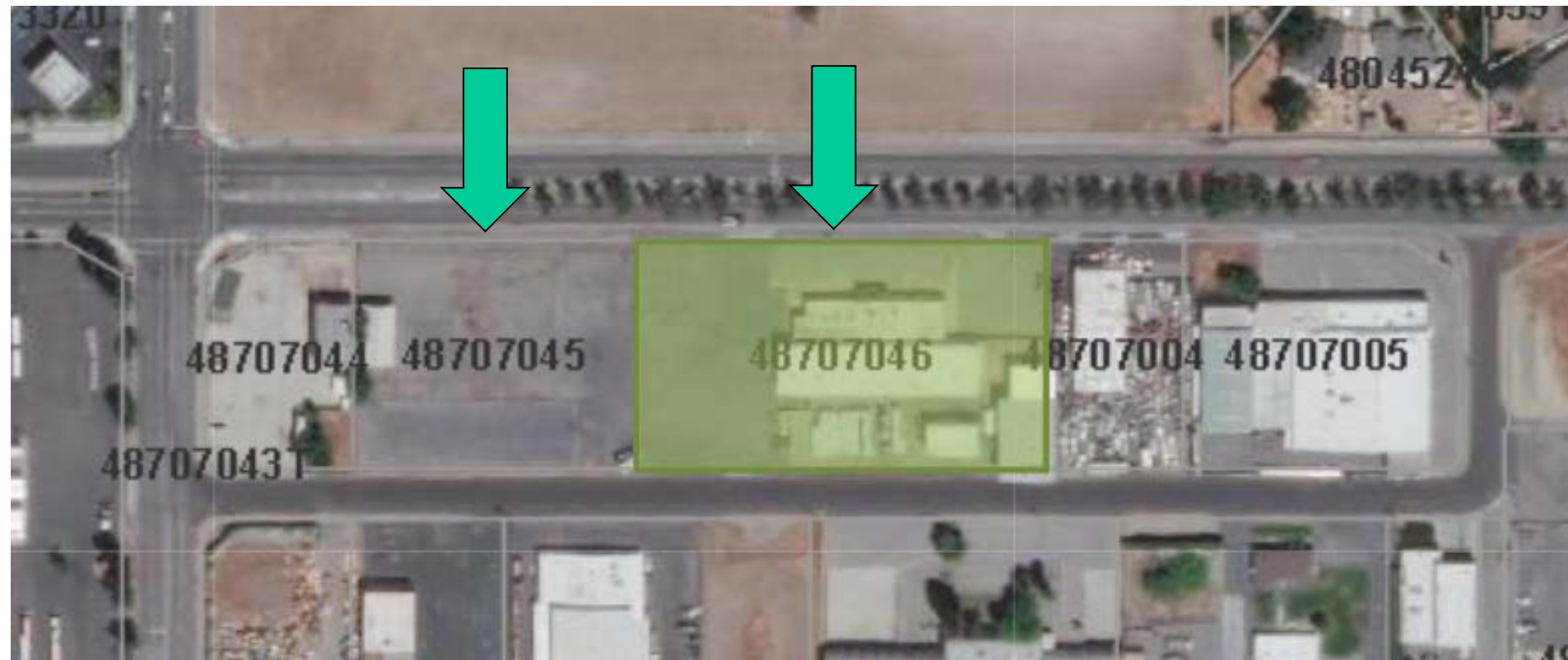
Nature of Operation

- Recondition and Refurbish bulk containers and drums (empty upon arrival)
- Inspect and remove labels from the containers (outside yard)
- Clean/test container (inside building)

Initial Study (Environmental Analysis)

- Staff determined a Mitigated Negative Declaration is sufficient for this project
- Less than significant environmental impact
- No change to existing buildings







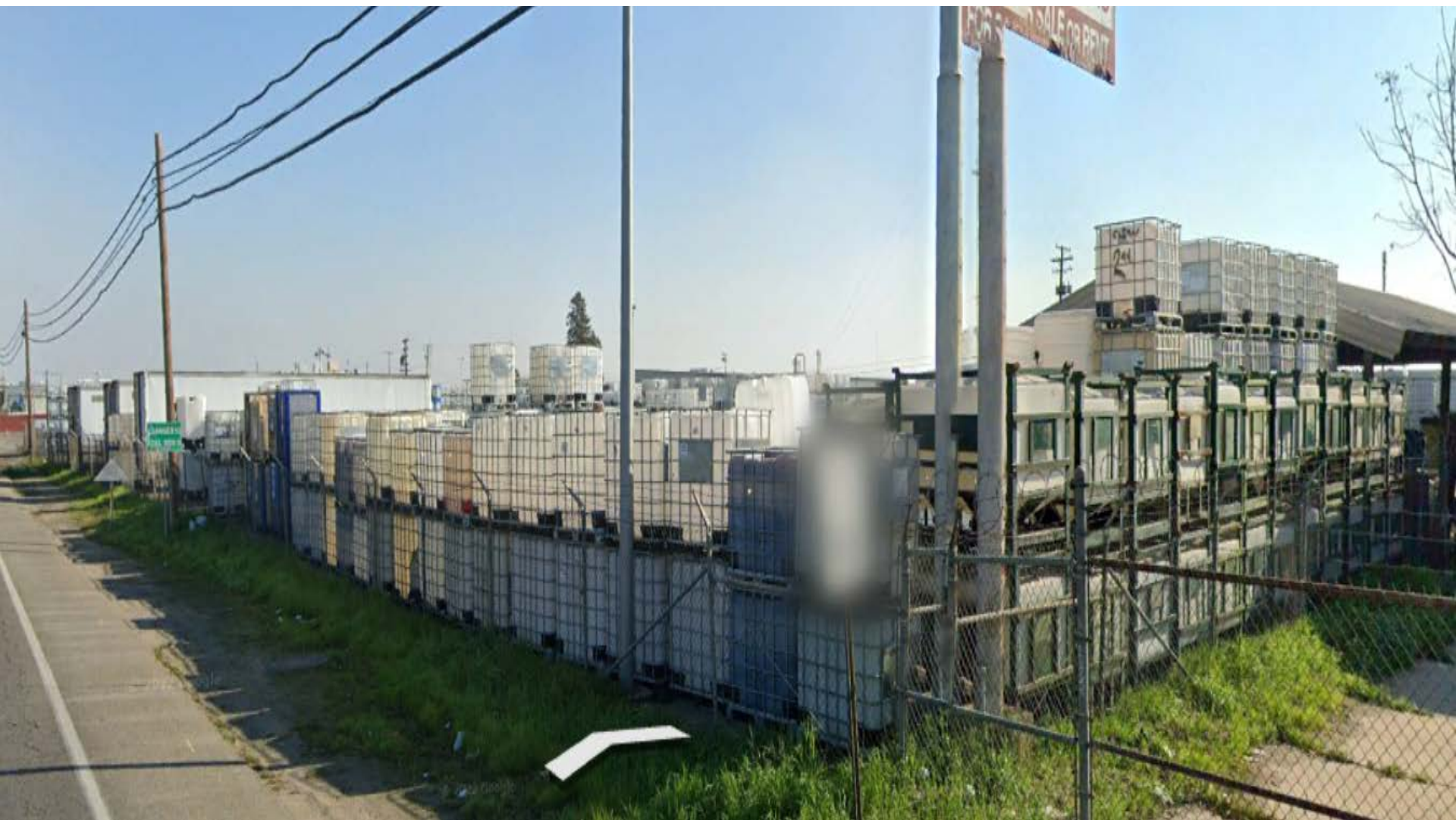


EXHIBIT 5



S Maple Ave

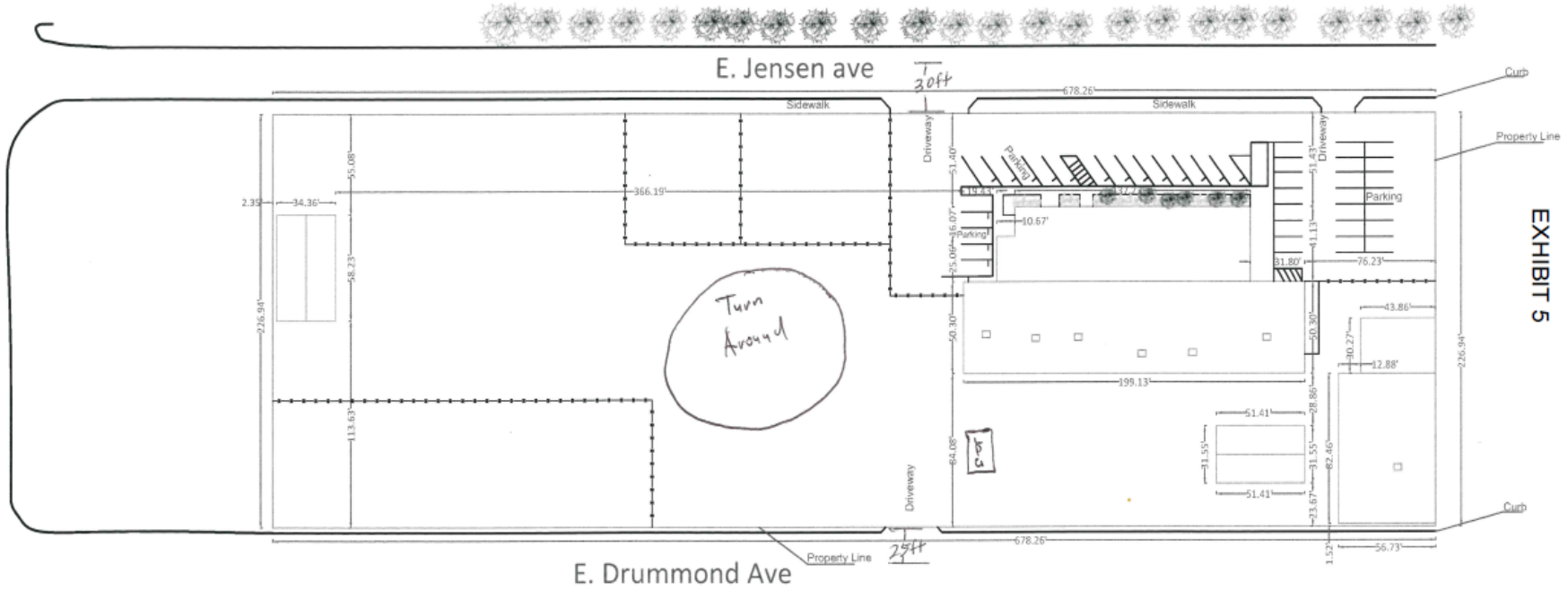
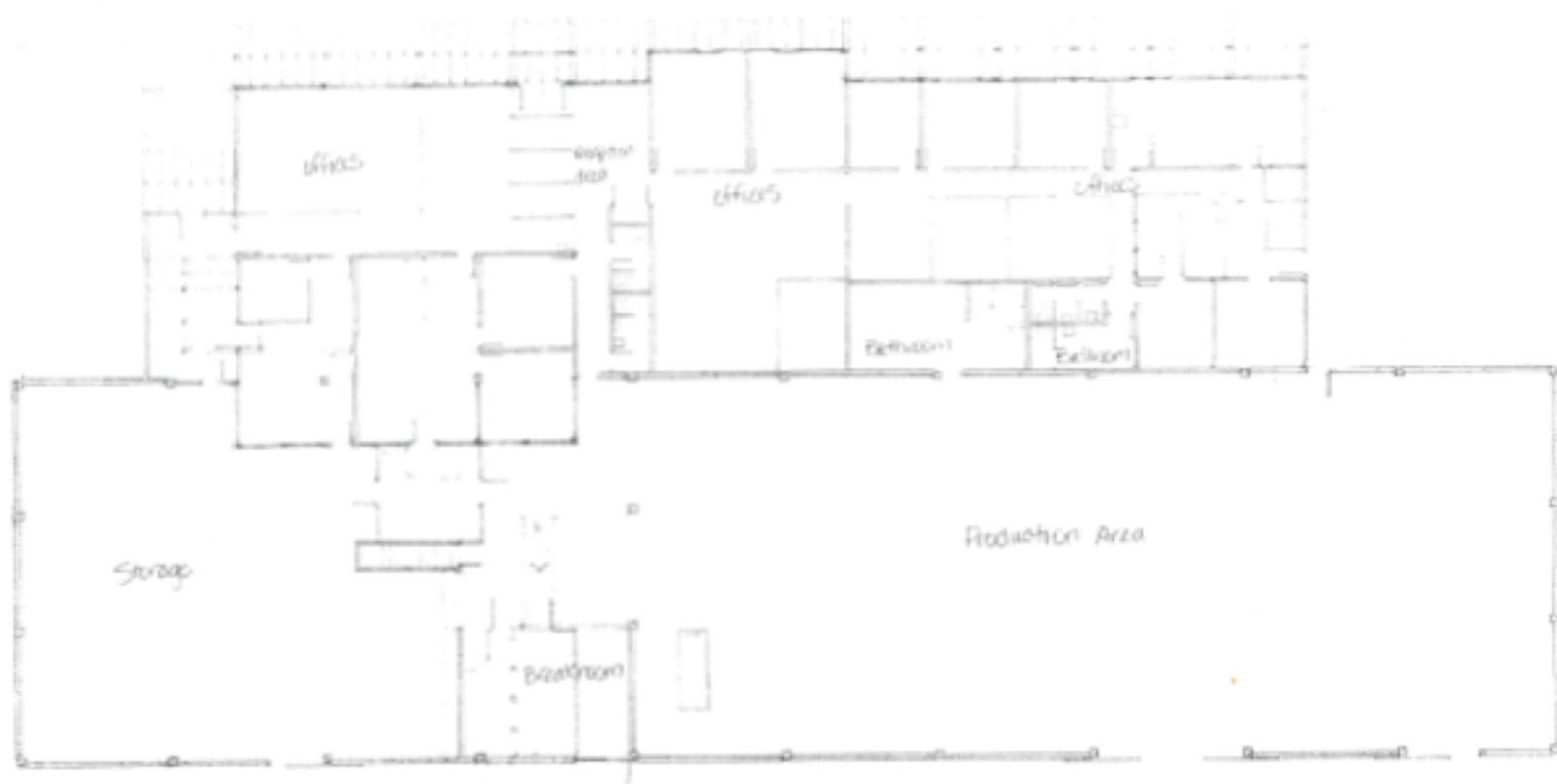


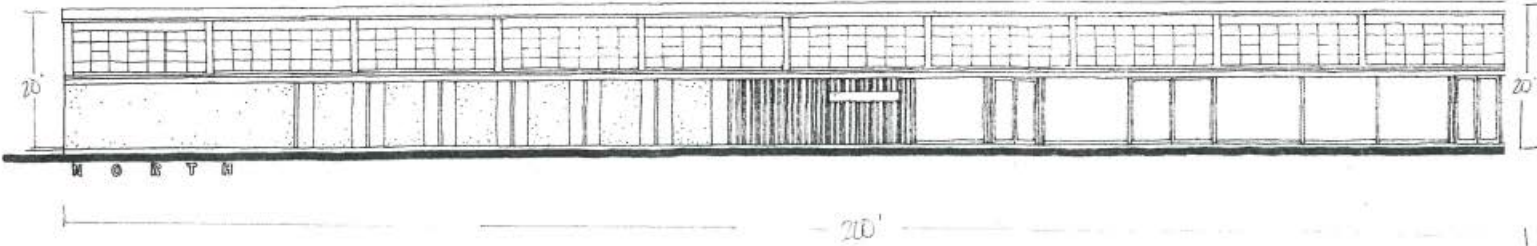
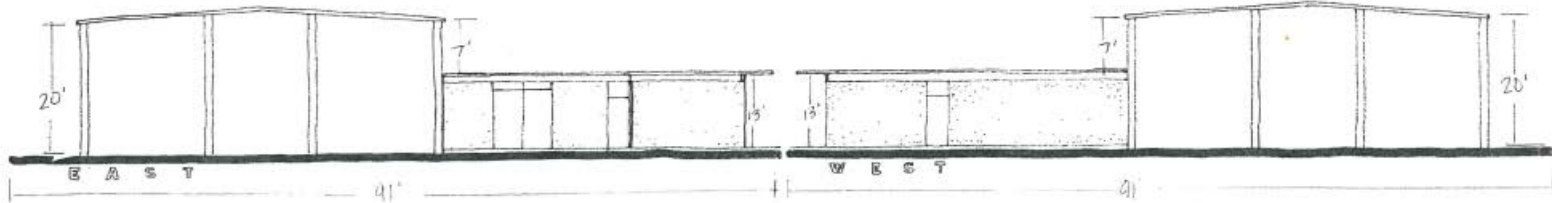
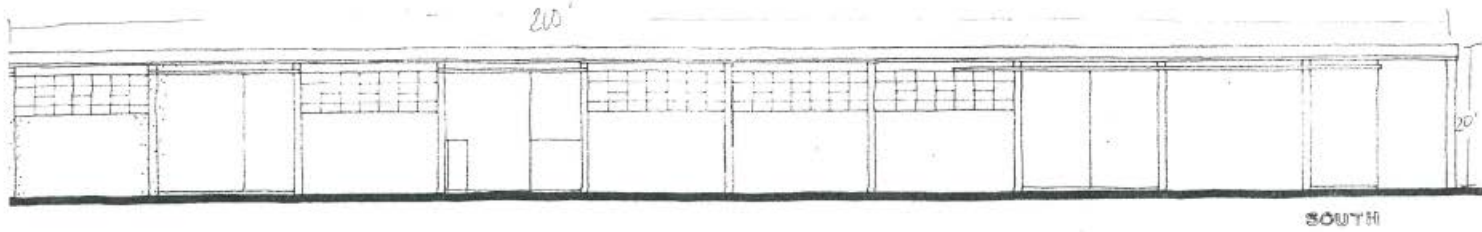
EXHIBIT 5



4646 E. Jensen ave
Fresno, CA 93725
Scale: 1"=60'

N





JAMES OAKES AIA
Architect - Planner
101 W. Main
COSTA MESA, CALIFORNIA 92626
5/24/81

Findings	Description	Findings Met
1	Parcel's size and shape adequate	YES
2	Site can accommodate negligible traffic increase	YES
3	No adverse effect on surrounding neighborhood	YES
4	Consistent with General Plan	YES
5	Condition necessary for public health, safety, and general welfare	YES

Recommended Motion (Approval Action)

- *Move to determine the required Findings can be made as recommended by the Staff Report and move to approve Conditional Use Permit No. 3725, subject to the Conditions of Approval and Project Notes listed in Exhibit 1; and*
- *Direct the Secretary to prepare a Resolution documenting the Commission's action*

Alternative Motion (Denial Action)

- *Move to determine that the required Findings cannot be made (**state basis for not making the Findings**) and move to deny Conditional Use Permit No. 3725; and*
- *Direct the Secretary to prepare a Resolution documenting the Commission's action.*