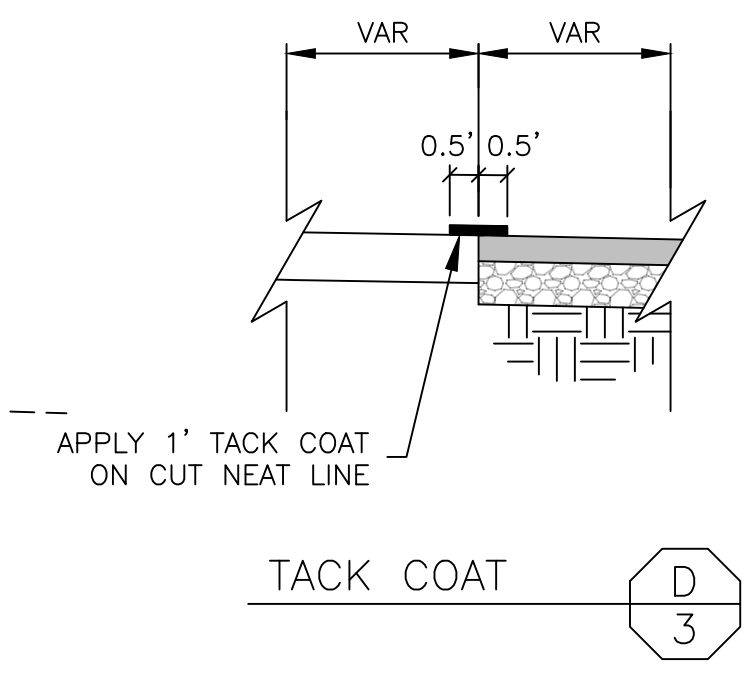
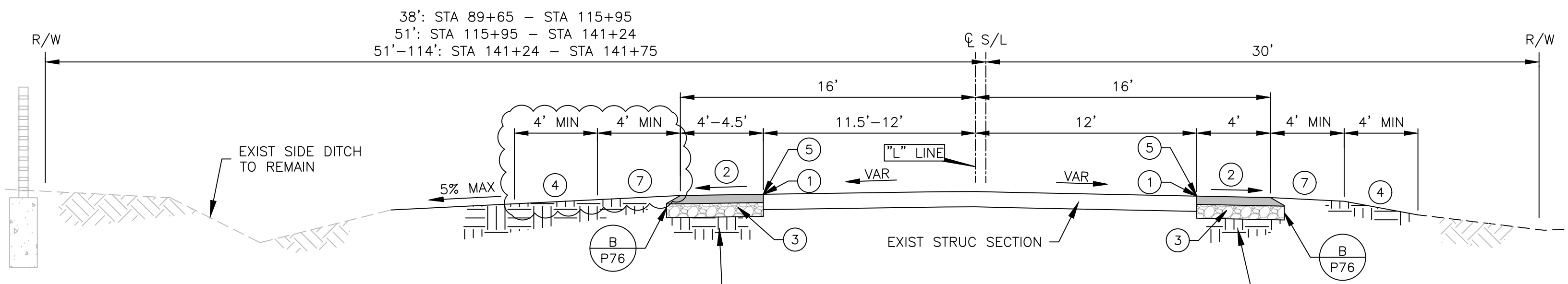


TYPICAL SECTION
 STA 19+87 - 33+75
 STA 35+95 - 60+00
 STA 62+11 - 63+16
 STA 65+00 - 89+65
 STA 141+75 - 142+08
 STA 143+00 - 169+11
 STA 170+25 - 188+75
 STA 189+25 - 247+75
 STA 248+50 - 326+48
 STA 326+48 - 326+86 RIGHT SIDE ONLY



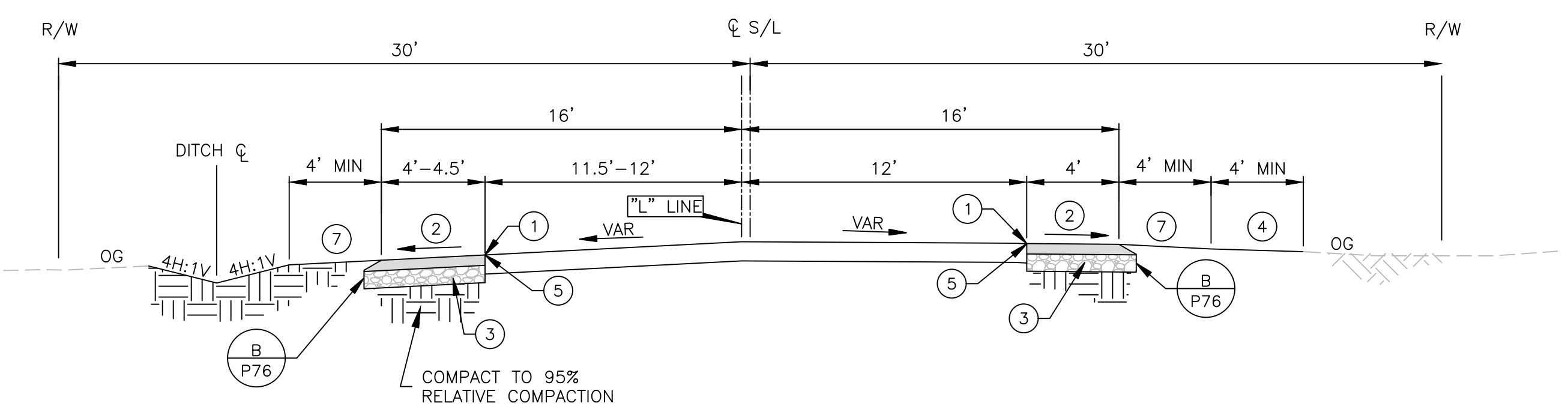
TACK COAT
 D 3



TYPICAL SECTION
 STA 89+65 - 115+41
 STA 115+41 - 130+95 RIGHT SIDE ONLY
 STA 130+95 - 141+75

NORHTING	EASTING	DIRECTION	BEGIN STA	END STA	LENGTH
14945.24	1795.45	N 89°56'31" E	10+00.00	36+18.17	2618.17
14947.89	4413.62	N 89°56'38" E	36+18.17	62+82.61	2664.44
14950.50	7078.06	N 89°56'49" E	62+82.61	89+21.96	2639.35
14952.95	9717.41	N 89°56'33" E	89+21.96	115+60.35	2638.38
14955.60	12355.79	N 89°40'07" E	115+60.35	142+25.95	2665.60
14971.01	15021.35	N 89°39'22" E	142+25.95	168+91.34	2665.40
14987.01	17686.70	N 89°45'46" E	168+91.34	221+97.46	5306.12
15008.99	22992.77	N 89°43'04" E	221+97.46	275+03.05	5305.59
15035.12	28298.30	N 89°42'26" E	275+03.05	328+06.62	5303.57
15062.23	33601.80				

SECTION LINE DATA
 E 3



TYPICAL SECTION
 STA 33+75 - 35+95
 STA 60+00 - 62+11
 STA 63+16 - 65+00
 STA 142+08 - 143+00
 STA 169+11 - 170+25
 STA 188+75 - 189+25
 STA 247+75 - 248+50

- NOTES:
- CUT NEAT LINE AT SPECIFIED OFFSET FROM C/L (SEE PLANS)
 - CROSS SLOPE TO MATCH EXIST TRAVEL LANE CROSS SLOPE
 - PAVED SHOULDER STRUCTURAL SECTION 0.45' HMA / 0.75' AB / 0.50' CNS TO 95% RELATIVE COMPACTION
 - SHOULDER BACKING TO MEET EXIST GROUND AT 4:1 SLOPE OR FLATTER FOR A MIN OF 4'
 - SEE DETAIL D ON THIS SHEET
 - SLOPE TO 10H:1V OR FLATTER
 - SHOULDER TO BE GRADED 5% AWAY FROM EDGE OF PAVEMENT

DESIGNED: J. WAGNER	DATE: 6/9/2022	RECORD DRAWING	SCALE		PROJECT		DEPARTMENT OF PUBLIC WORKS AND PLANNING			
DRAWN: J. WAGNER	DATE: 6/9/2022	RESIDENT ENGINEER	NOT TO SCALE		AMERICAN AVE SHOULDER IMPROVEMENTS		CONSTRUCTION DETAILS			
CHECKED: S. ARTAL	DATE: 6/9/2022				PLACER AVE - MADERA AVE					
FOR RIGHT OF WAY DATA AND ACCURATE ACCESS DETERMINATION, SEE DOCUMENTS IN THE DEPARTMENT OF PUBLIC WORKS AND PLANNING.				SUPERVISING ENGINEER	DATE: 6/10/2022	ROAD NO. S0500	BRIDGE NO. N/A	DRAWING NO. 11285	SHEET NO. 3A	TOTAL 31