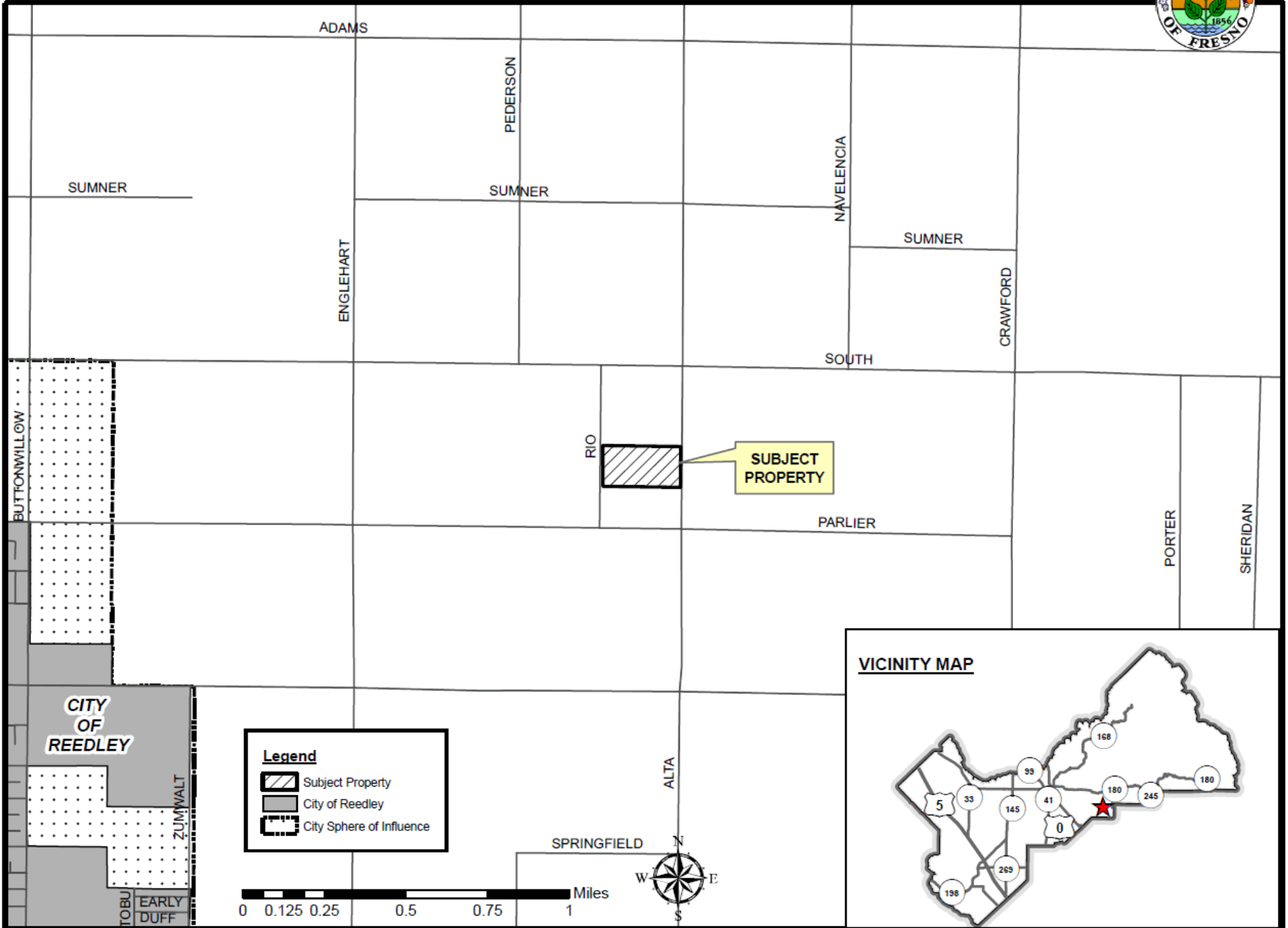




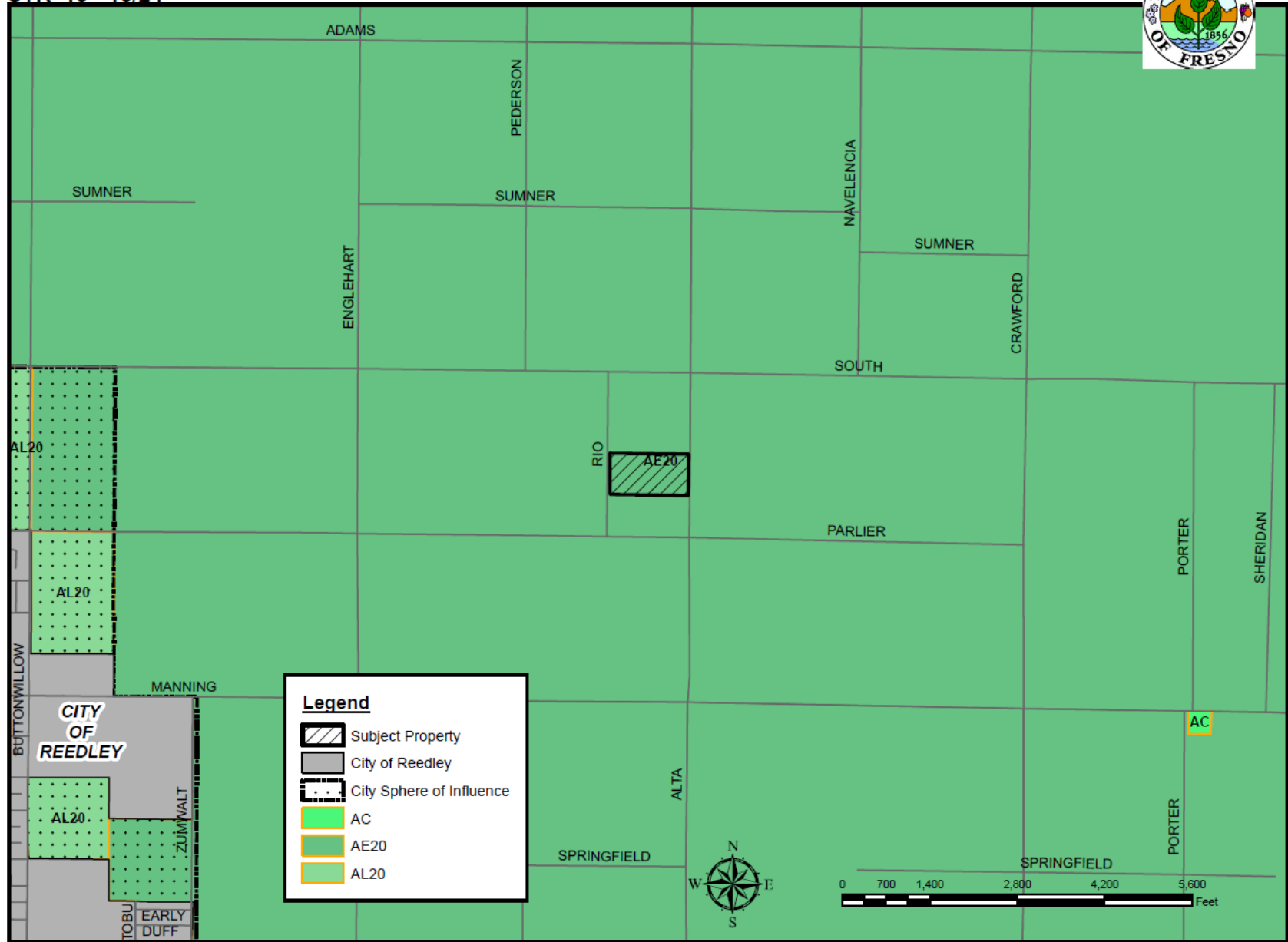
DEPARTMENT of PUBLIC WORKS and PLANNING
DEVELOPMENT SERVICES DIVISION

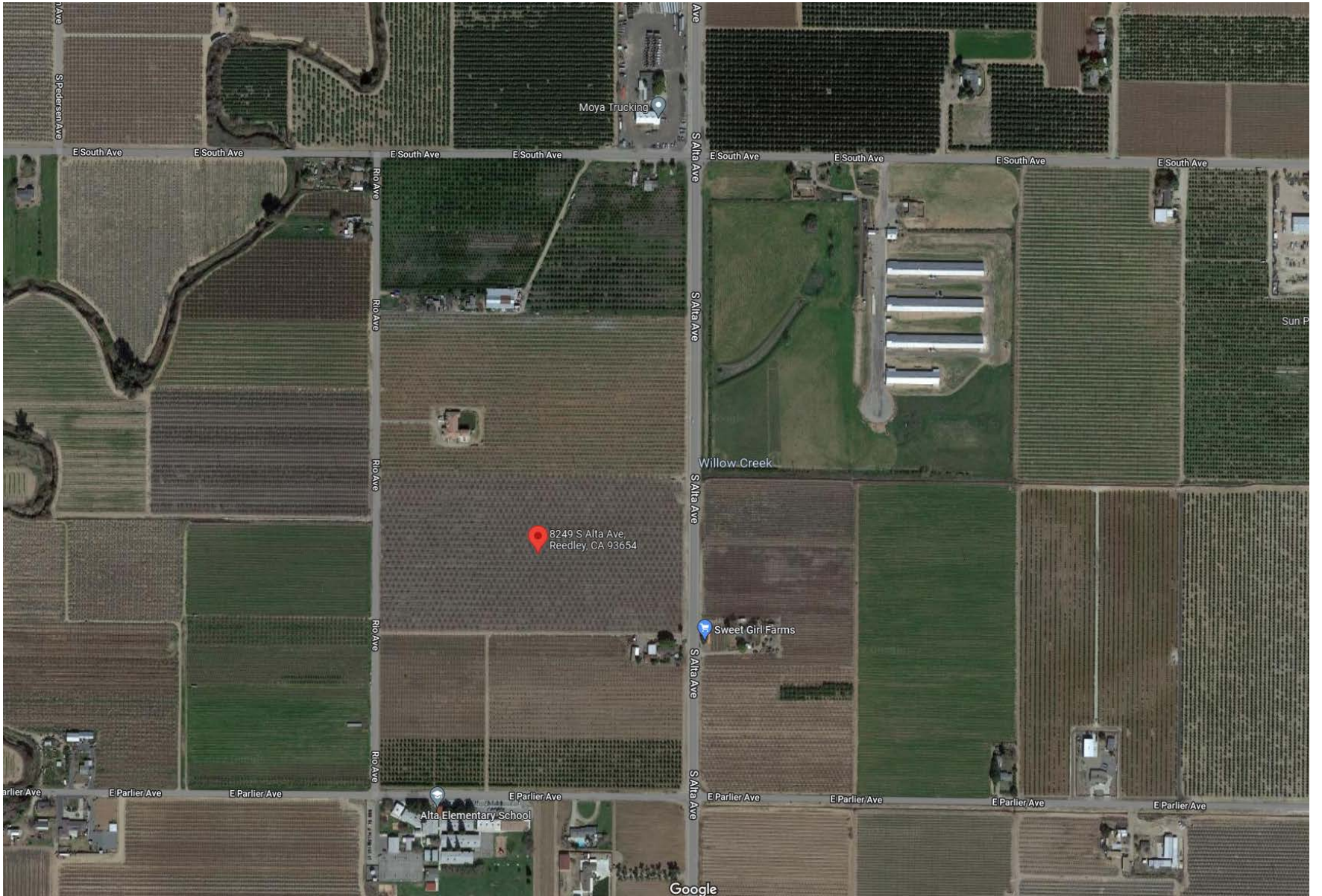


LOCATION MAP



EXISTING ZONING MAP





Moya Trucking

8249 S Alta Ave
Reedley, CA 93654

Sweet Girl Farms

Alta Elementary School

Google



Looking East



Looking West



Looking South



Looking North

Findings	Description	Findings Met
1	Size and shape of parcel is adequate.	YES
2	Streets and highways are adequate for use.	YES
3	No adverse effect on neighborhood.	YES
4	General Plan consistency.	YES
5	Conditions necessary for public health, safety, and general welfare.	YES

PLANNING COMMISSION MOTIONS:

Recommended Motion (Approval Action)

- Move to determine the required Findings can be made and move to approve Unclassified Conditional Use No. 3743, subject to the Conditions of Approval and Project Notes listed in Exhibit 1; and
- Direct the Secretary to prepare a Resolution documenting the Commission's action.

Alternative Motion (Denial Action)

- Move to determine that the required Findings cannot be made and move to deny Unclassified Conditional Use No. 3743; and
- Direct the Secretary to prepare a Resolution documenting the Commission's action.

Recommended Conditions of Approval and Project Notes:

- See Exhibit 1