

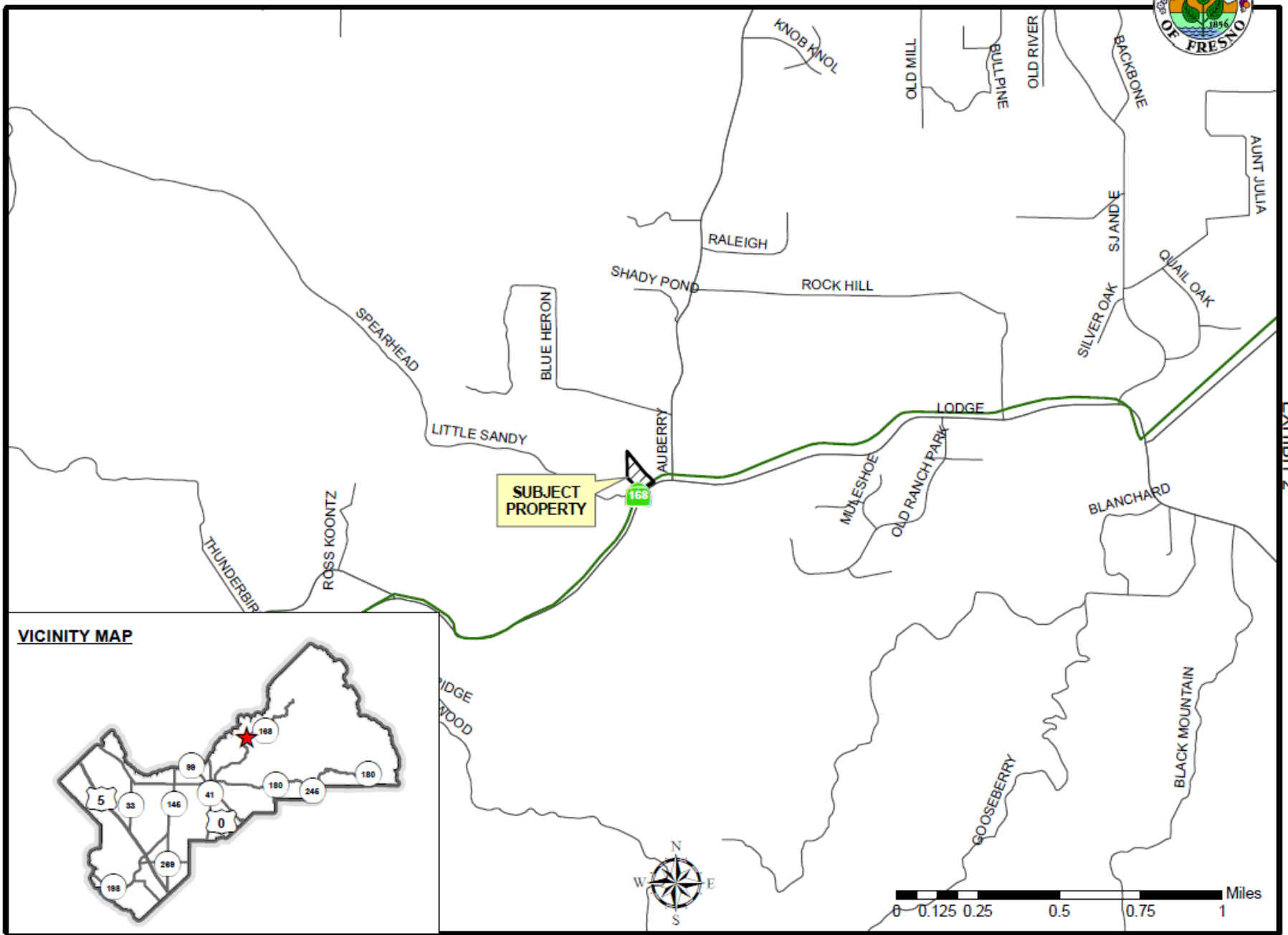


DEPARTMENT of PUBLIC WORKS and PLANNING
DEVELOPMENT SERVICES DIVISION



EXHIBIT 2
LOCATION MAP

CUP 3744



VICINITY MAP

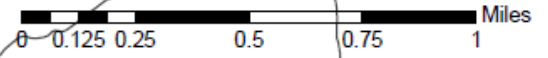
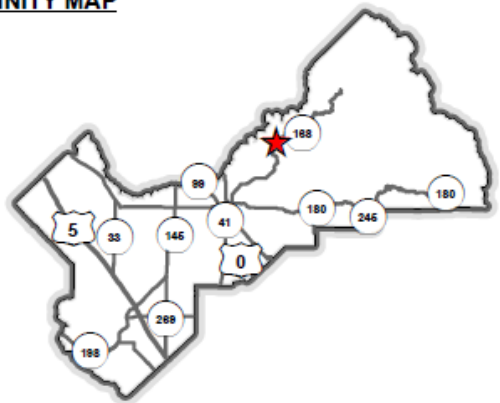
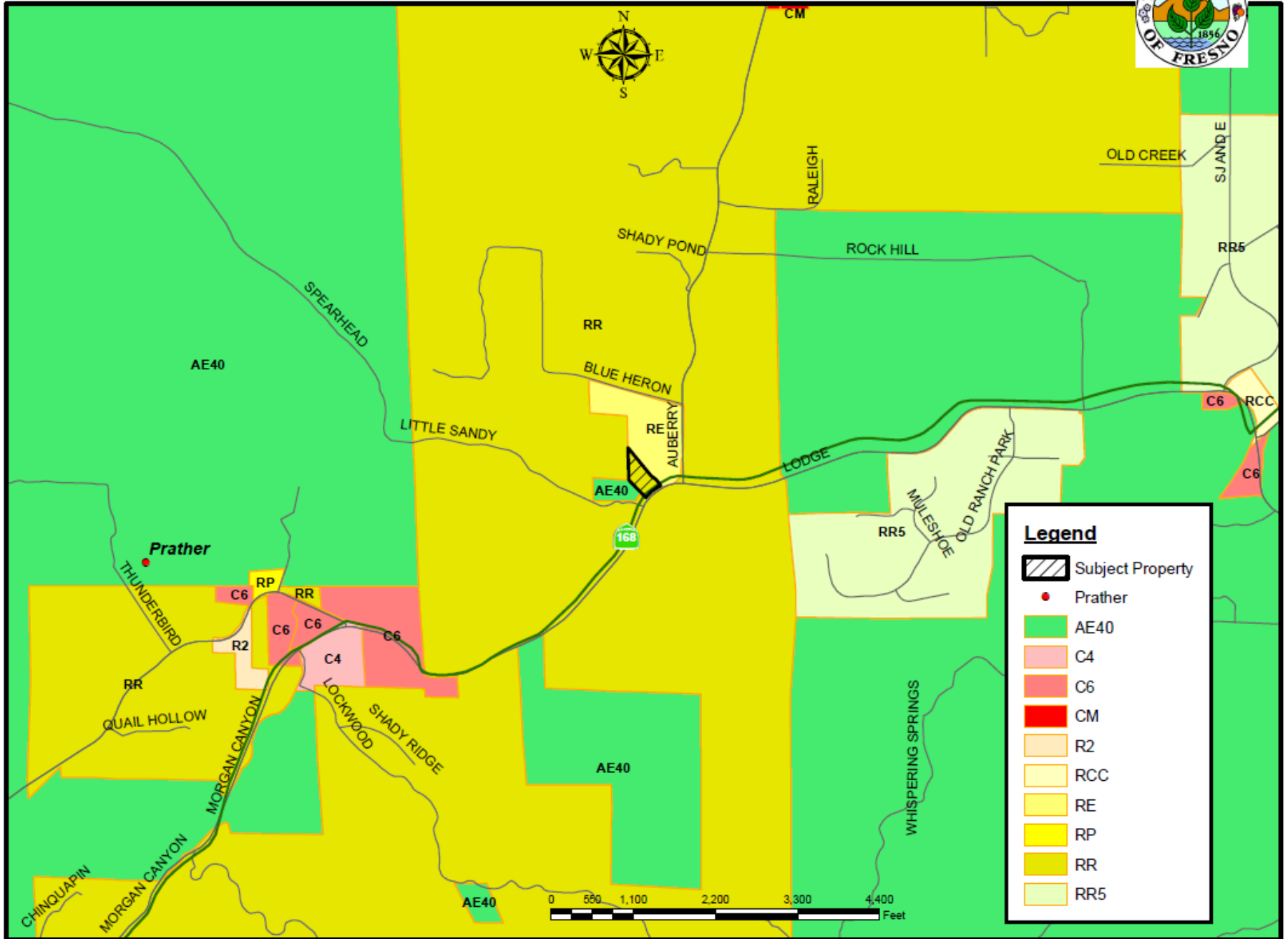


EXHIBIT 3
EXISTING ZONING MAP



Legend

- Subject Property
- Prather
- AE40
- C4
- C6
- CM
- R2
- RCC
- RE
- RP
- RR
- RR5

EXHIBIT 3

EXHIBIT 4
**APPROVED CONDITIONAL USE PERMITS
WITHIN A HALF MILE RADIUS**

CUP 3744

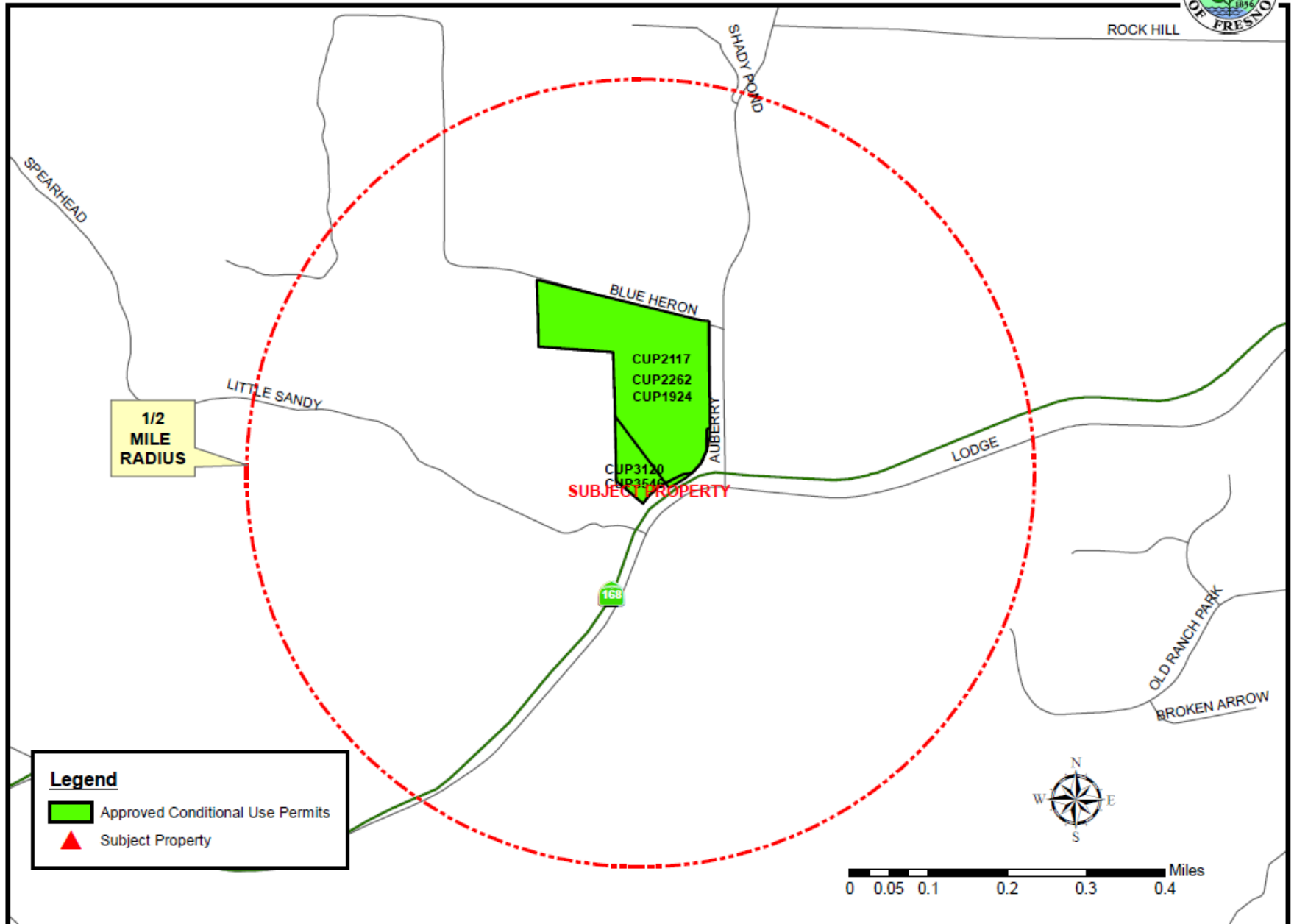


EXHIBIT 4





DRAFT

WORKING FIRE LANE



Findings	Description	Findings Met
1	Size and shape of parcel is adequate.	YES
2	Streets and highways are adequate for use.	YES
3	No adverse effect on neighborhood.	YES
4	General Plan consistency.	YES
5	Conditions necessary for public health, safety, and general welfare.	YES

PLANNING COMMISSION MOTIONS:

Recommended Motion (Approval Action)

Move to adopt the Mitigated Negative Declaration based on Initial Study No. 8238 and

Move to determine the required Findings can be made based on the analysis in the staff report and move to approve Classified/Unclassified Conditional Use No. 3744, subject to the Mitigation Measures, Conditions of Approval and Project Notes listed in Exhibit 1; and

Direct the Secretary to prepare a Resolution documenting the Commission's action.

Alternative Motion (Denial Action)

Move to determine that the required Findings cannot be made (state basis for not making the Findings) and move to deny Unclassified Conditional Use Permit Application No. 3744 and

Direct the Secretary to prepare a Resolution documenting the Commission's action.

Mitigation Measures, Recommended Conditions of Approval and Project Notes:

See attached Exhibit 1.