

## FRESNO COUNTY DEPARTMENT OF BEHAVIORAL HEALTH - OUTCOMES Attachment A

**PROGRAM TITLE:** Positive Behavior Interventions and Supports (PBIS)

**PROVIDER:** Fresno County Special Education Local Plan Area (SELPA)

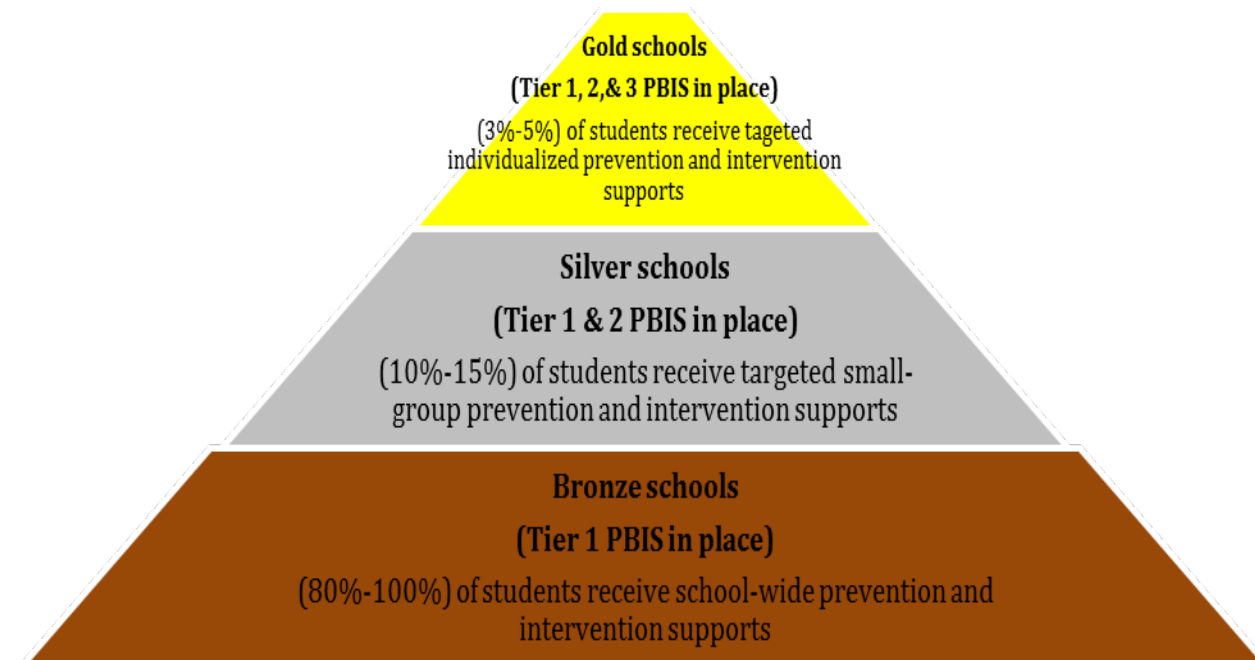
**PROGRAM DESCRIPTION:** To ensure that PBIS school teams are creating a positive culture in their schools providing students with targeted behavior supports and interventions that are proactive and preventative for all students, staff, families, and the community that are sustainable and effective.

**Key Terms:**

**Cohort-** defined as a group of K-8 FCOE schools beginning the three-year PBIS training at the same time (Year 1 of training is focused on Tier 1 PBIS implementation, Year 2 is focused on Tier 2 PBIS implementation, and Year 3 is focused on Tier 3 PBIS implementation). Currently there are 4 cohorts of schools FCOE PBIS model school trainings (Cohort 1/16 K-8 FCOE schools, Cohort 2/32 K-8 FCOE schools, Cohort 3/14 K-8 FCOE schools, Cohort 4/22 K-8 FCOE schools, Cohort 5/19 schools. However, the findings in the report include previous school year January 2014-June 2014 and current school year August 2014-June 2015 data.

**PBIS Tiers of Interventions defined in Graph 1:**

**Graph 1**



## FRESNO COUNTY DEPARTMENT OF BEHAVIORAL HEALTH - OUTCOMES Attachment A

---

*Note: Cohorts 1 and 2 are no longer receiving formal team training but are offered quarterly refresher trainings and have access to send new PBIS team members to new cohort trainings. In addition, data was collected differently for Cohort 1 due to changes in outcomes and accountability measures so there may be some gaps in Cohort 1 data in graphs depicted. Cohort 5 began formal training in August 2014 (no data prior to this starting date will be reflected from Cohort 5)*

### AGES SERVED:

☒ **Children**  
☐ **Adult**

☐ **TAY**  
☐ **Older Adult**

**DATES OF OPERATION:** August 2013-ongoing

**DATES OF DATA REPORTING PERIOD:** August to June

### OUTCOME GOAL

- 1) 80% of all K-8 FCOE trained schools will be implementing at model PBIS levels.
- 2) 80% of K-8 FCOE schools in each cohort will be performing at model PBIS levels.

- 3) 80% of K-8 FCOE schools participating in the PBIS cohort trainings will demonstrate a decrease in number of suspensions and expulsions.

### OUTCOME DATA

BRONZE (Tier 1- targets 80-100% of students), SILVER (Tier 2- targets 10-15% of students), GOLD (Tier 3- targets 3-5% of students) Exemplar Levels  
Benchmarks of Quality (BOQ) Comparison Data.

California Department of Education (CDE) and school reported discipline data, FCOE progress monitoring google document, & model PBIS school application process.

## FRESNO COUNTY DEPARTMENT OF BEHAVIORAL HEALTH - OUTCOMES Attachment A

---

- 4) 60% of schools in K-8 FCOE schools trained on Tier 2 and Tier 3 interventions will provide students with preventative Tier 2 and Tier 3 PBIS behavior interventions (includes but is not limited to mental health support early-age attachment, social support) in each school implementing PBIS at model levels.

Data collected at the twice a year on the FCOE PBIS progress monitoring google document by the FCOE PBIS trainers reported by school PBIS teams.

- 5) 80% of schools participating in the K-8 FCOE PBIS training will demonstrate an increase in mental health preventative factors compared to mental health risk factors.

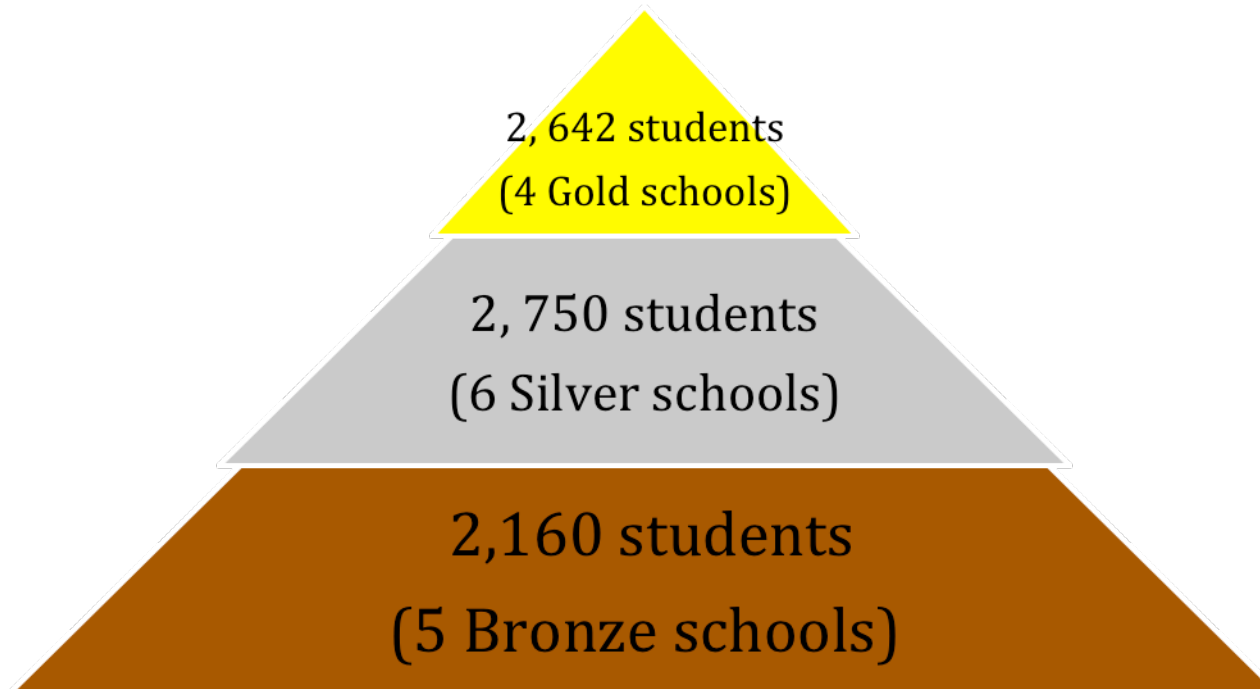
School Safety Survey (SSS) data completed by school staff of schools participating in PBIS trainings.

## **FRESNO COUNTY DEPARTMENT OF BEHAVIORAL HEALTH - OUTCOMES Attachment A**

Graphs 2-10 depict the number of schools trained in each PBIS cohort, number of schools demonstrating model PBIS levels (Bronze, Silver, and Gold) and approximate number of students served in schools performing at each model PBIS level.

**Graph 2 – January 2014-June 2014 Findings**

**Cohort 1 K-8 (16 Schools  
trained/93% model PBIS  
level)**

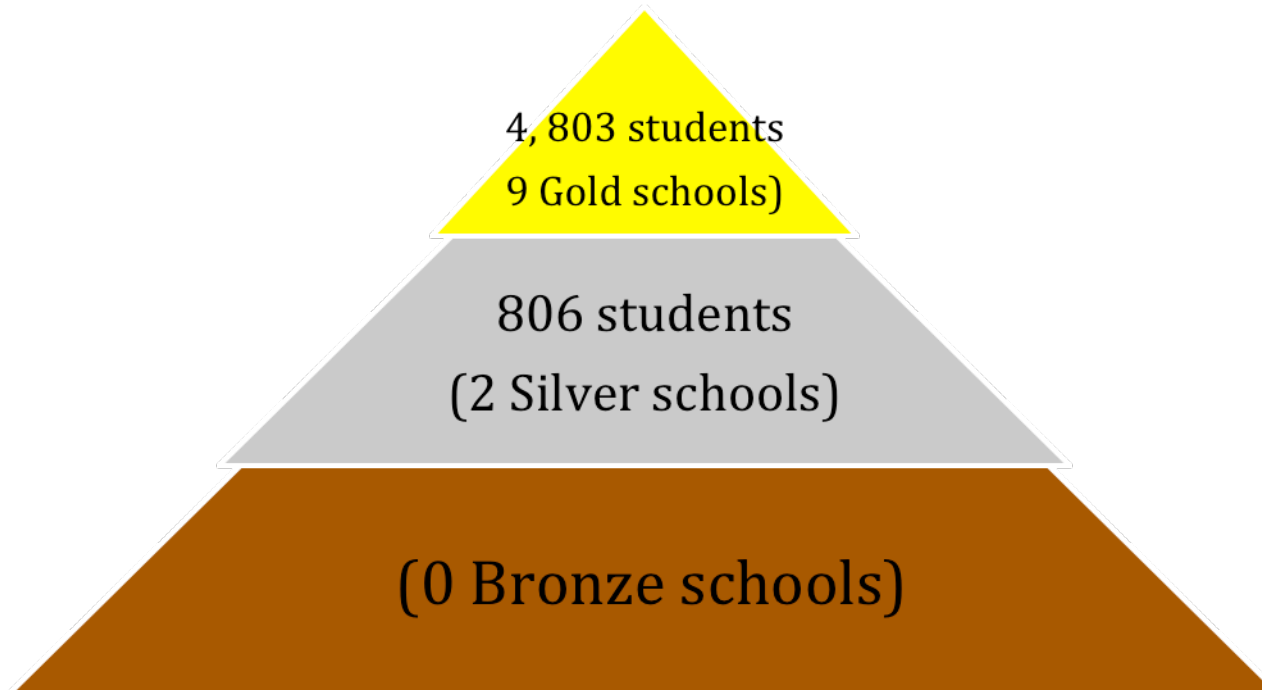


## **FRESNO COUNTY DEPARTMENT OF BEHAVIORAL HEALTH - OUTCOMES Attachment A**

---

**Graph 3 – August 2014 – June 2015 Findings**

**Cohort 1 K-8 (16 Schools  
trained/70% model PBIS  
level)**

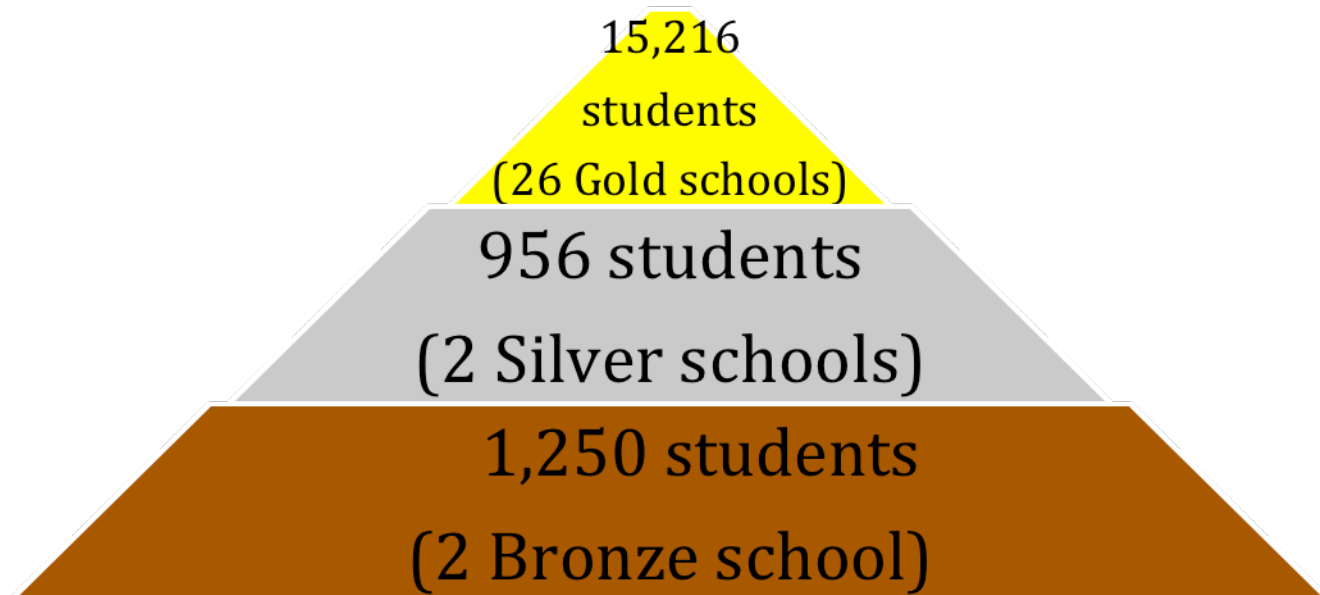


## **FRESNO COUNTY DEPARTMENT OF BEHAVIORAL HEALTH - OUTCOMES Attachment A**

---

**Graph 4 – January 2014-June 2014 Findings**

**Cohort 2 K-8  
(32 Schools  
trained/94% model  
PBIS level)**

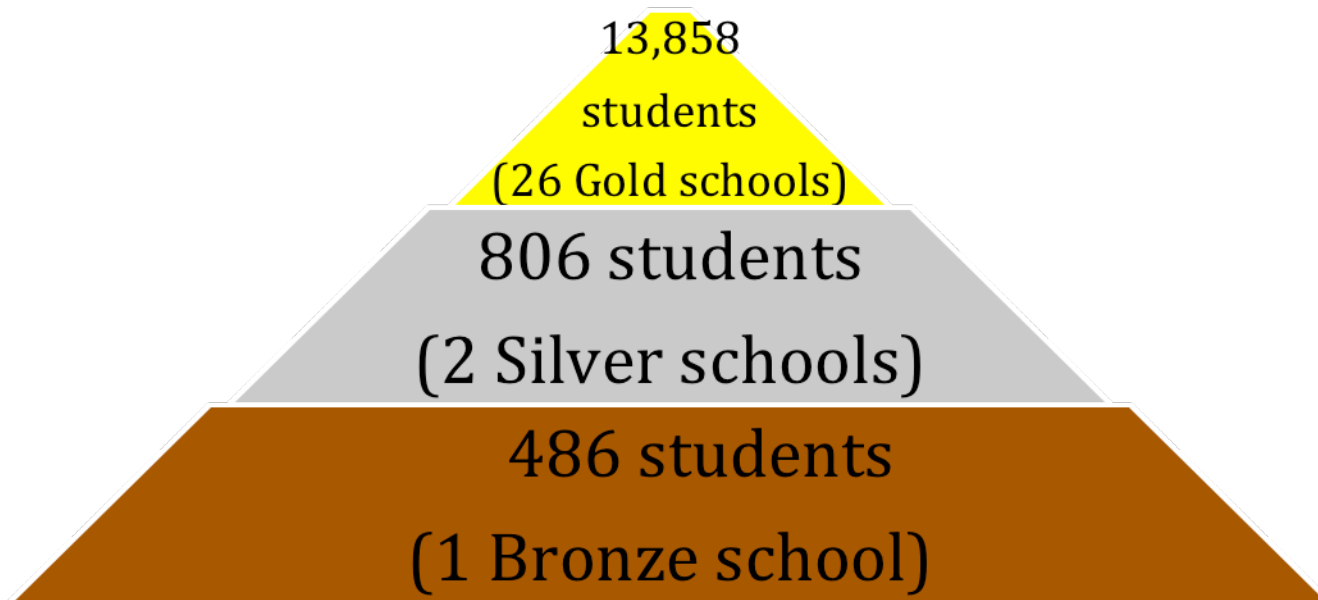


## **FRESNO COUNTY DEPARTMENT OF BEHAVIORAL HEALTH - OUTCOMES Attachment A**

---

**Graph 5 – August 2014-June 2015 Findings**

**Cohort 2 K-8  
(32 Schools  
trained/86% model  
PBIS level)**

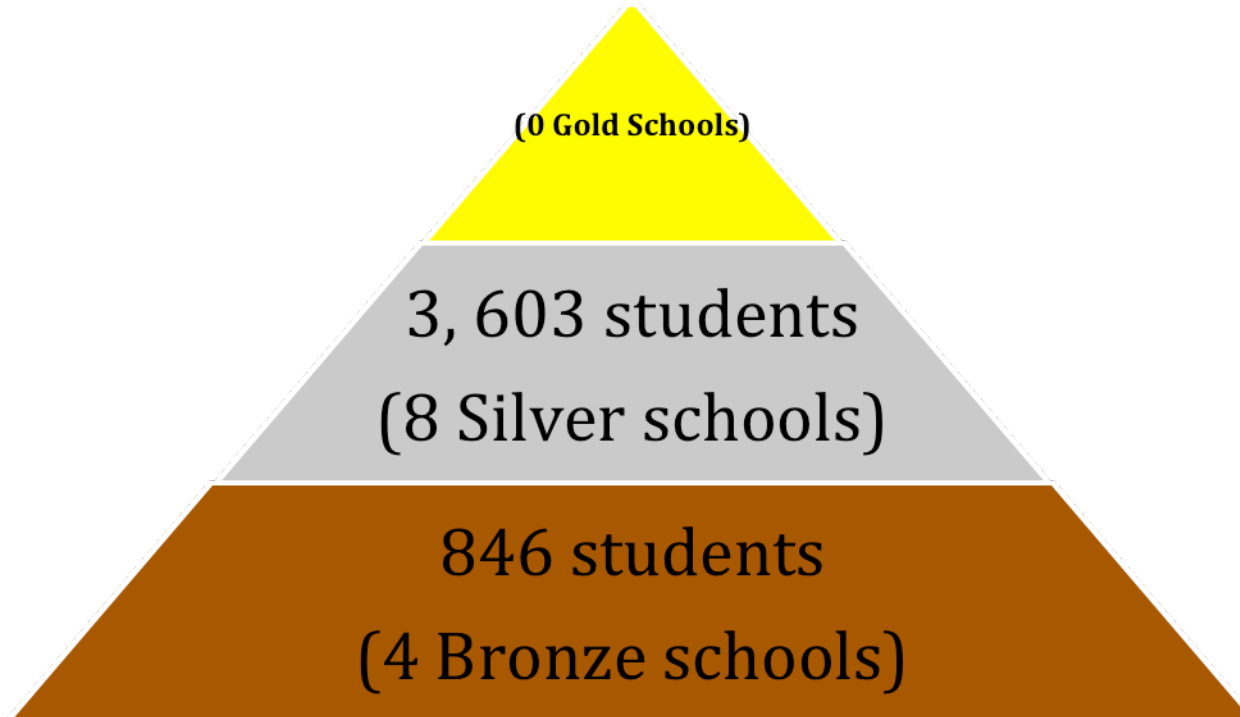


## **FRESNO COUNTY DEPARTMENT OF BEHAVIORAL HEALTH - OUTCOMES Attachment A**

---

**Graph 6 - January 2014-June 2014 Findings**

**Cohort 3 K-8**  
**(14 schools trained/  
86%model PBIS level)**



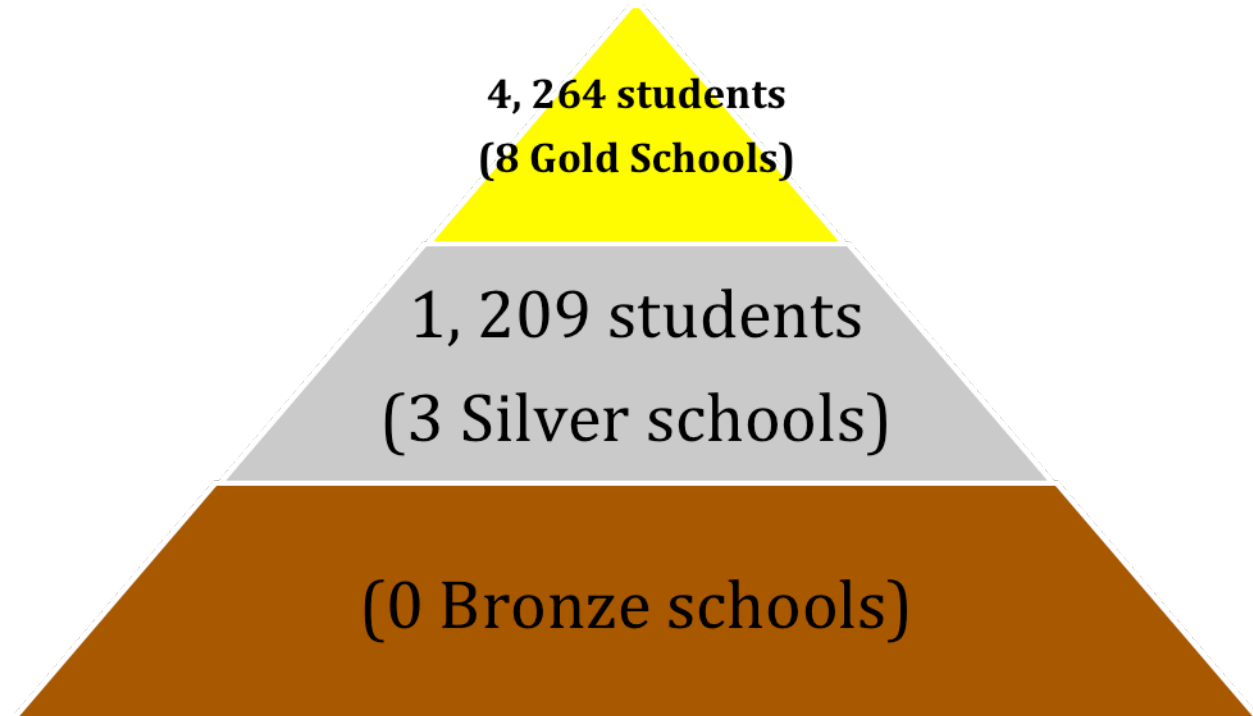


## **FRESNO COUNTY DEPARTMENT OF BEHAVIORAL HEALTH - OUTCOMES Attachment A**

---

**Graph 7 - August 2014-June 2015 Findings**

**Cohort 3 K-8**  
**(14 schools trained/  
80%model PBIS level)**

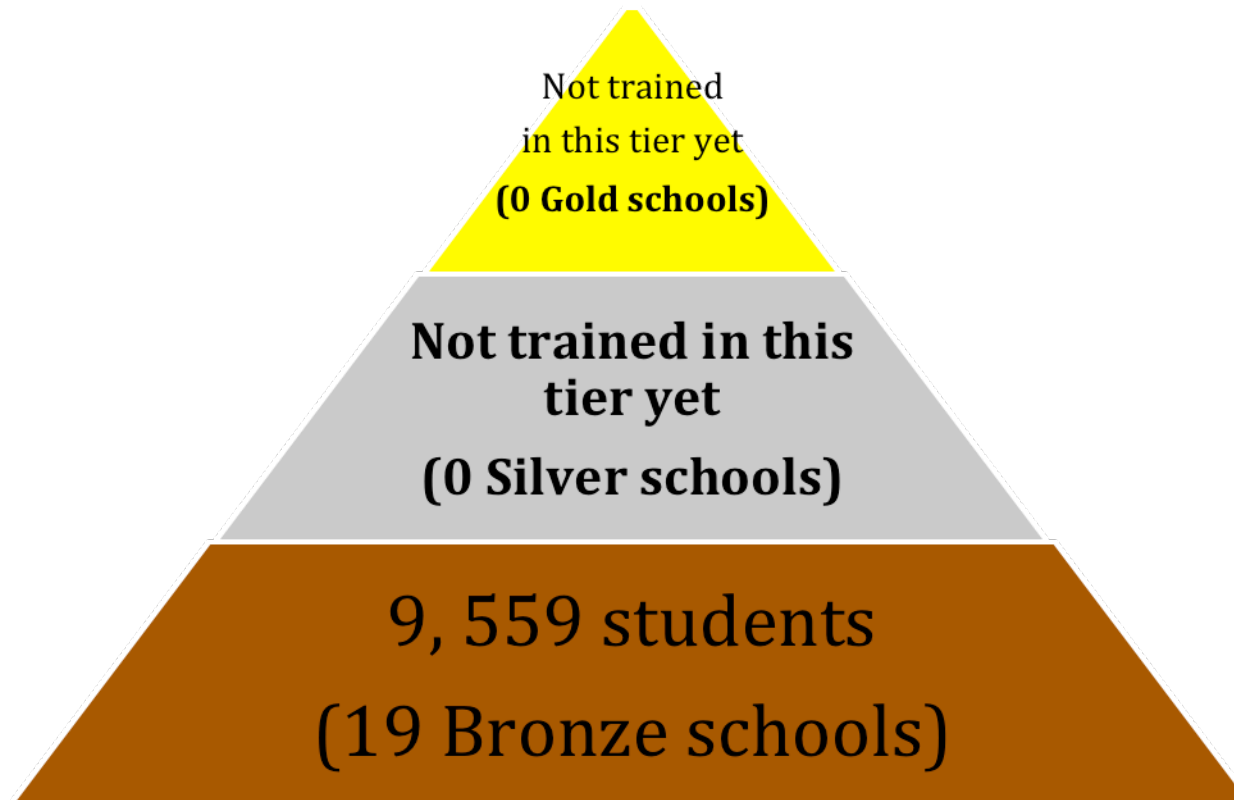


## **FRESNO COUNTY DEPARTMENT OF BEHAVIORAL HEALTH - OUTCOMES Attachment A**

---

**Graph 8 – January 2014-June 2014 Findings**

**Cohort 4 K-8**  
**(22 Schools trained/ 86%**  
**model PBIS level)**

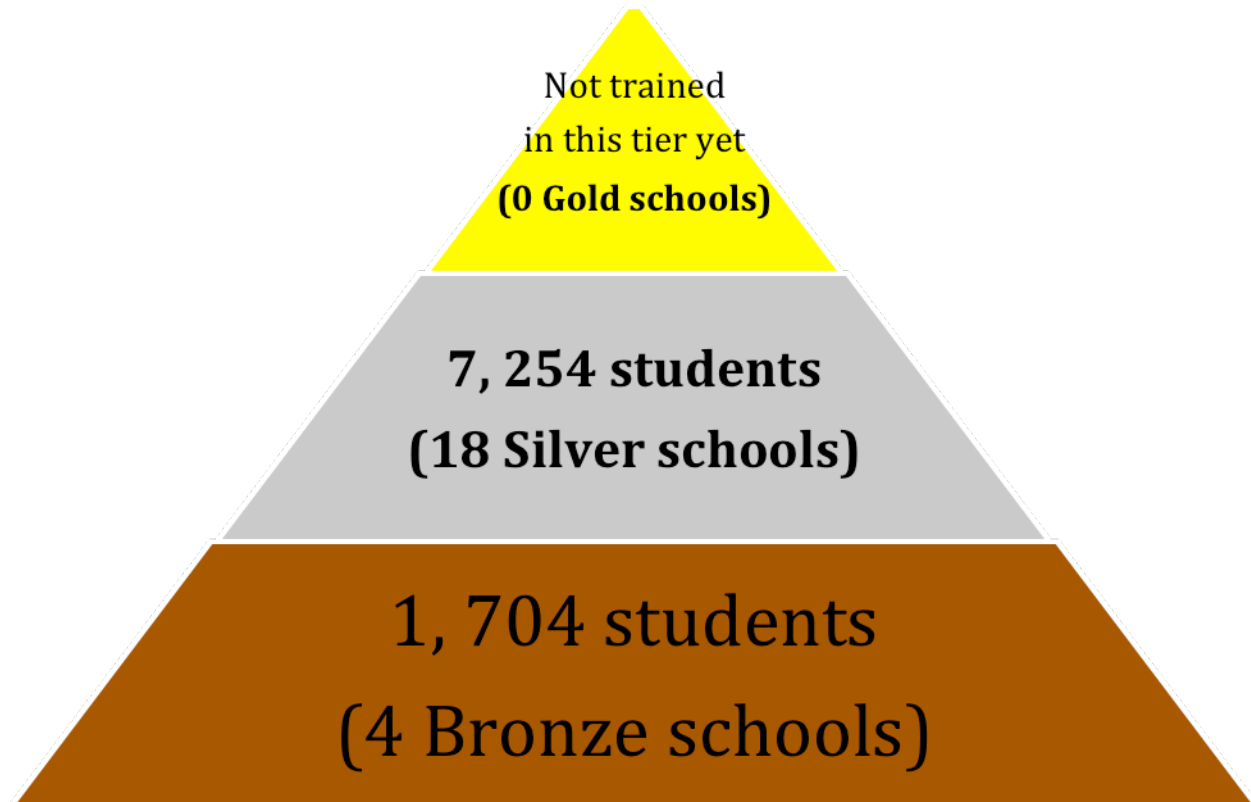


## **FRESNO COUNTY DEPARTMENT OF BEHAVIORAL HEALTH - OUTCOMES Attachment A**

---

**Graph 9 – August 2014-June 2015 Findings**

**Cohort 4 K-8**  
**(22 Schools trained/ 95%  
model PBIS level)**



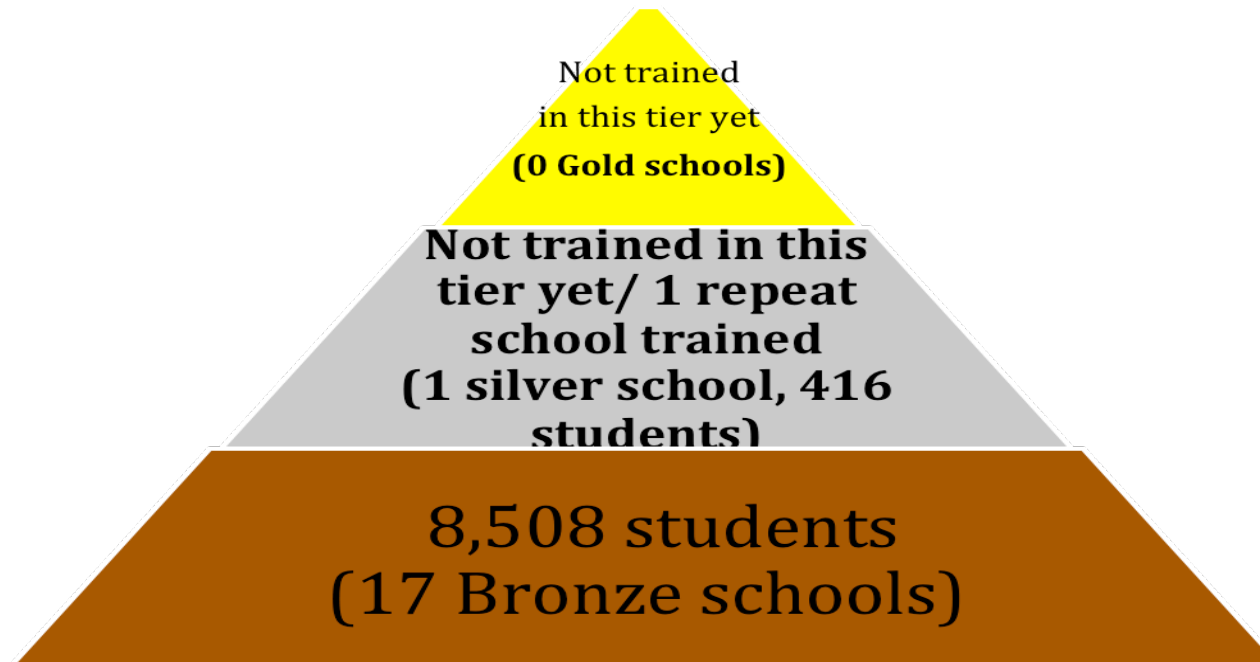
## **FRESNO COUNTY DEPARTMENT OF BEHAVIORAL HEALTH - OUTCOMES Attachment A**

---

### **Graph 10 – August 2014-June 2015 Findings**

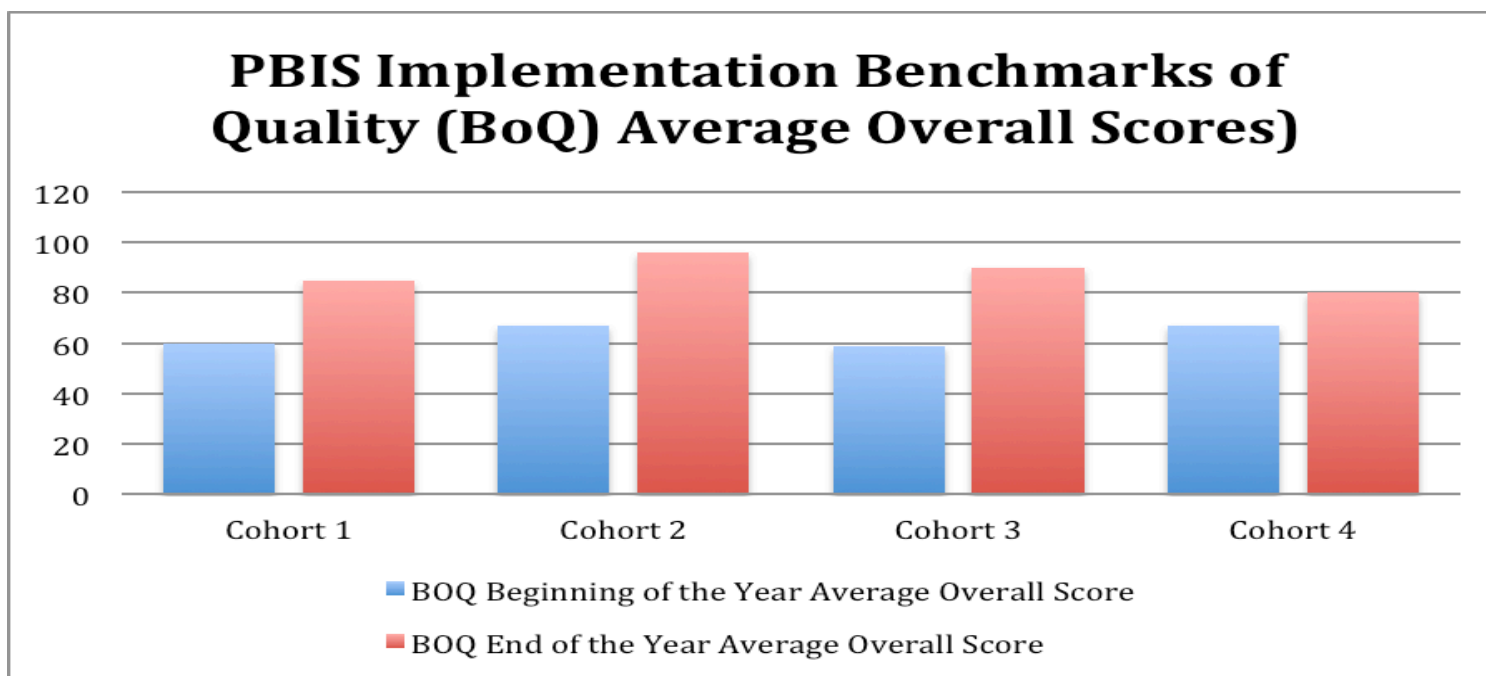
**(Note: Cohort 5 began training in August 2014 so there is no data from January 2014-June 2014 for Cohort 5)**

**Cohort 5 K-8  
19 Schools trained/ 95%  
model PBIS level)**



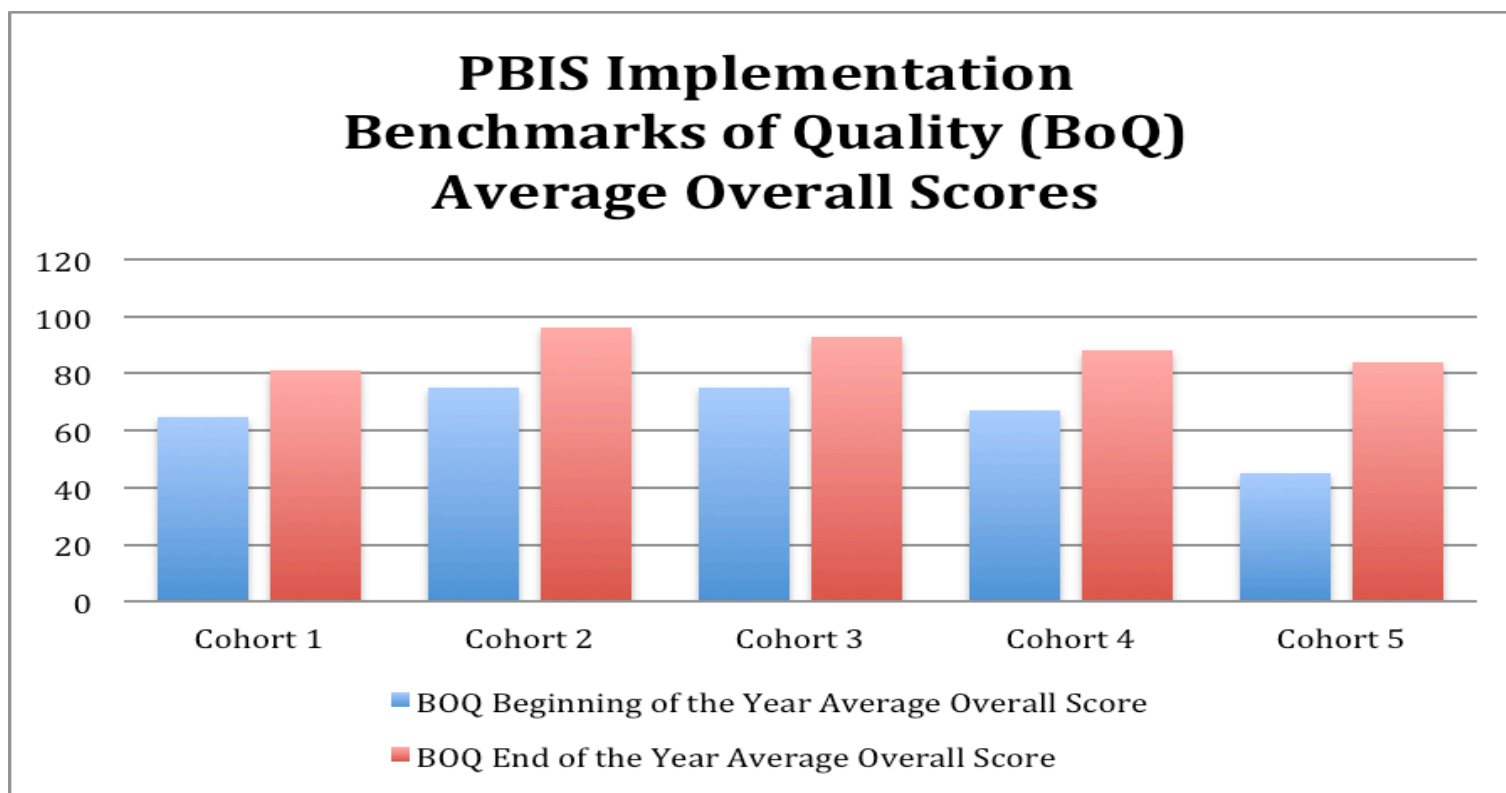
## FRESNO COUNTY DEPARTMENT OF BEHAVIORAL HEALTH - OUTCOMES Attachment A

Graph 11 describes the PBIS Implementation Benchmark of Quality (BoQ) Overall Trend Scores by Cohort  
Graph 11- January 2014-June 2014



## FRESNO COUNTY DEPARTMENT OF BEHAVIORAL HEALTH - OUTCOMES Attachment A

Graph 12 describes the PBIS Implementation Benchmark of Quality (BoQ) Overall Trend Scores by Cohort  
Graph 12 - August 2014-June 2015



## **FRESNO COUNTY DEPARTMENT OF BEHAVIORAL HEALTH - OUTCOMES Attachment A**

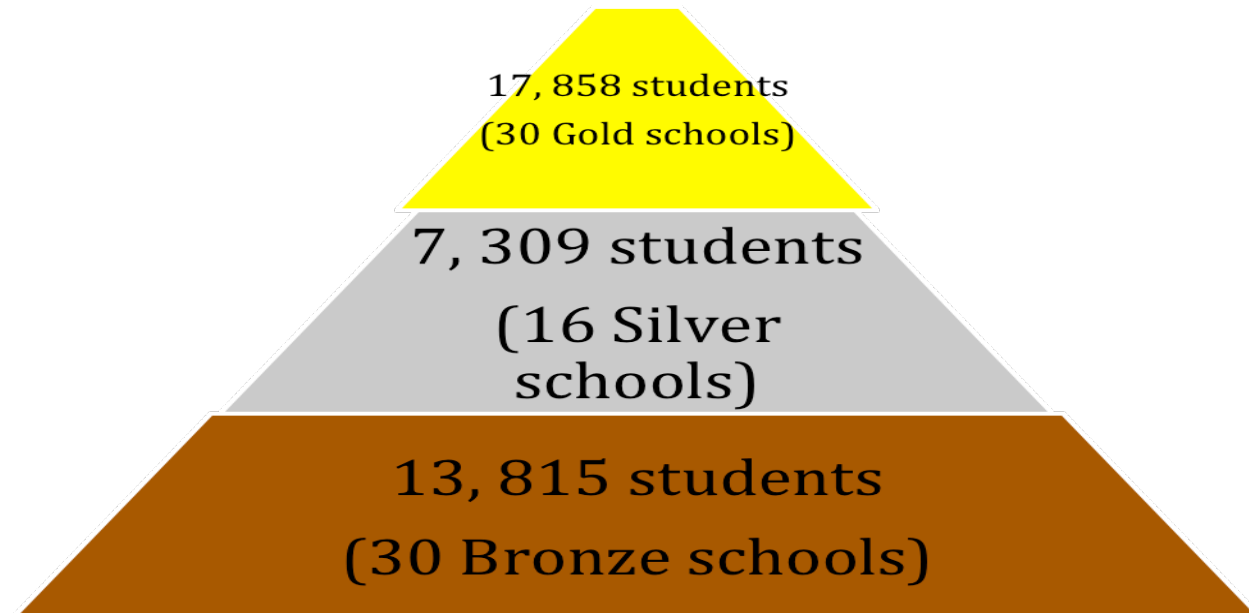
---

**Graph 13 describes the number and percentage of schools performing at PBIS model levels therefore providing Tier 2/Tier 3 preventative PBIS interventions to students**

**Graph 13 – January 2014 – June 2014**

**All Cohorts K-8**  
**(84 Schools trained/88% model PBIS level)**

- **Gold Schools 36%**
- **Silver Schools 19%**
- **Bronze Schools 36%**
- **Not at Model Level 9%**



## FRESNO COUNTY DEPARTMENT OF BEHAVIORAL HEALTH - OUTCOMES Attachment A

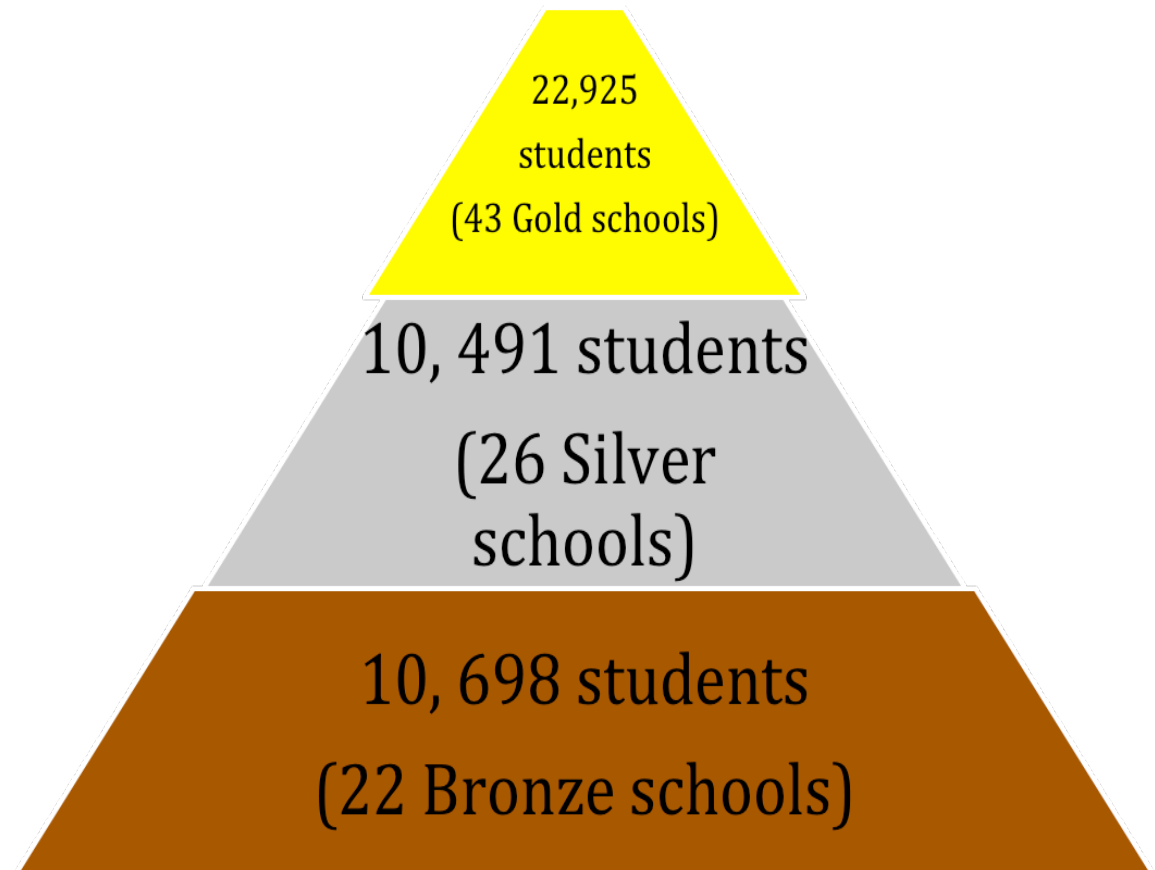
---

Graph 14 describes the number and percentage of schools performing at PBIS model levels therefore providing Tier 2/Tier 3 preventative PBIS interventions to students

Graph 14 – August 2014 – June 2015

**All Cohorts K-8**  
(103 Schools trained/88% model PBIS level)

- Gold Schools 42%
- Silver Schools 25%
- Bronze Schools 21%
- Not at Model Level 12%

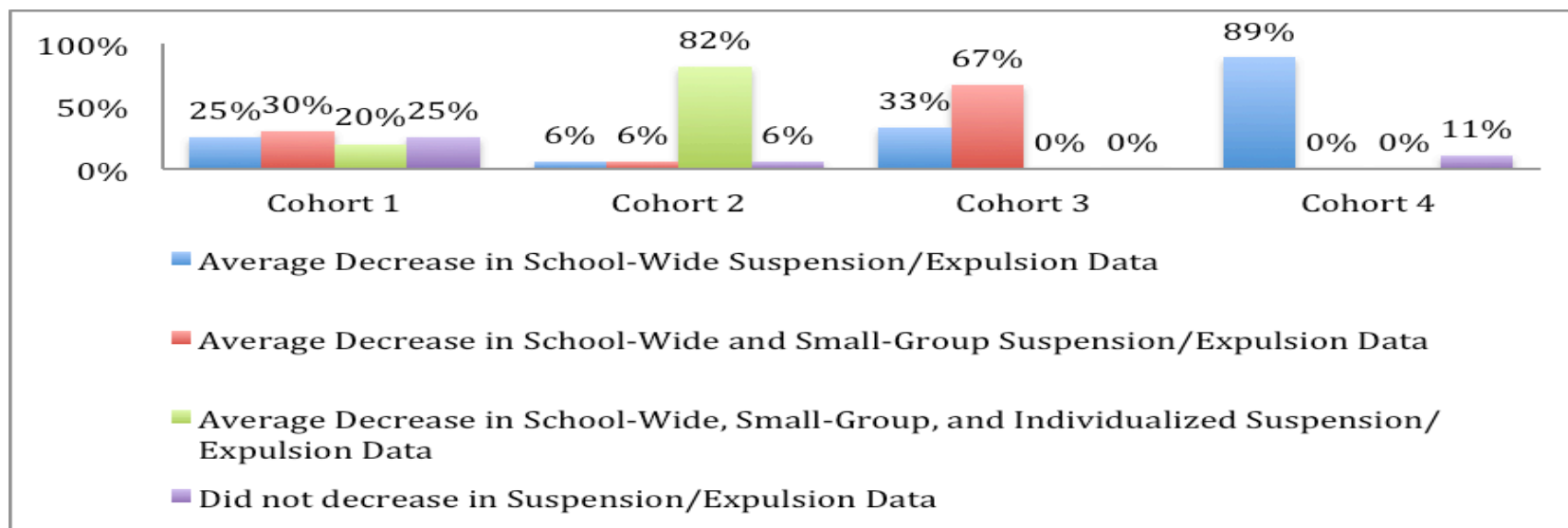




## FRESNO COUNTY DEPARTMENT OF BEHAVIORAL HEALTH - OUTCOMES Attachment A

Graph 15 describes the Suspension/Expulsion Data by Cohort (Trend analysis based on model school data)

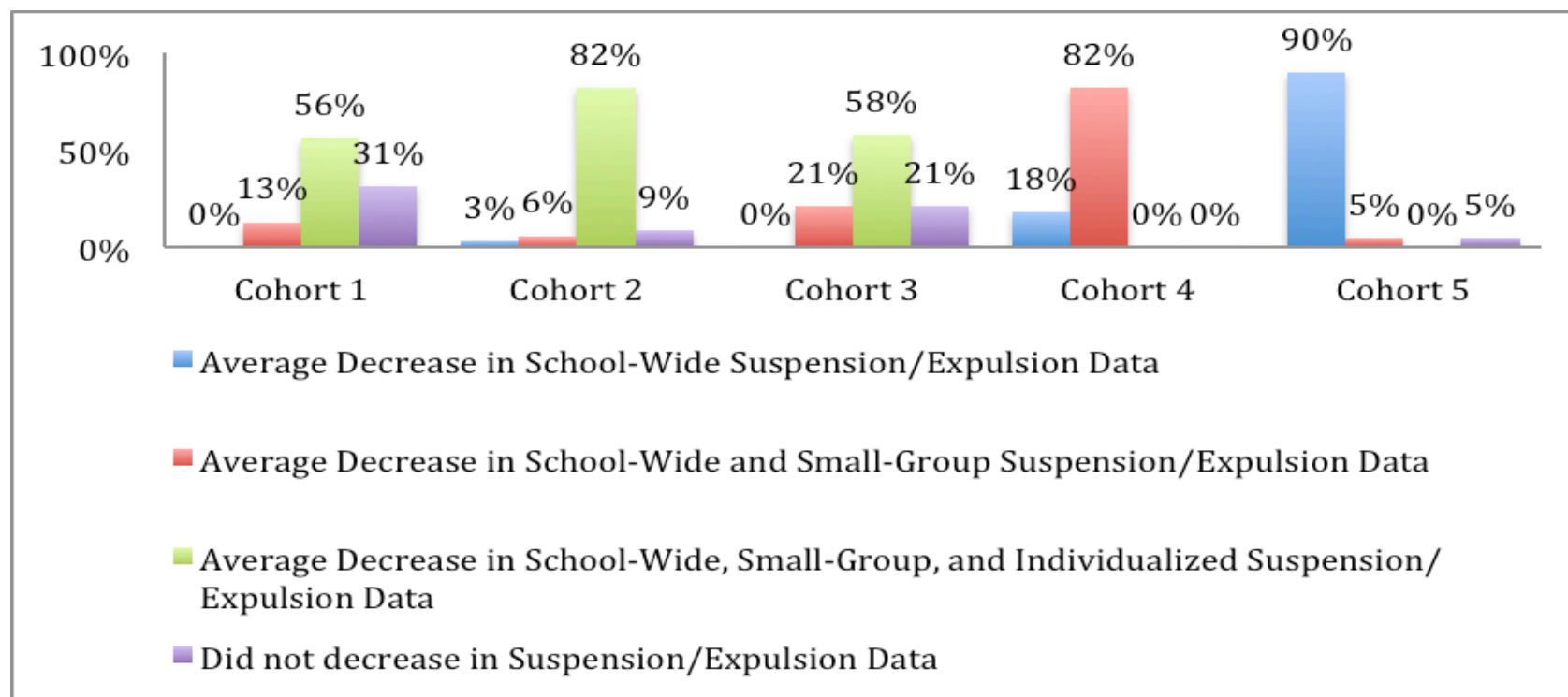
Graph 15 – January 2014-June 2014



## FRESNO COUNTY DEPARTMENT OF BEHAVIORAL HEALTH - OUTCOMES Attachment A

Graph 16 describes the Suspension/Expulsion Data by Cohort (Trend analysis based on model school data)

Graph 16 – August 2014-June 2015

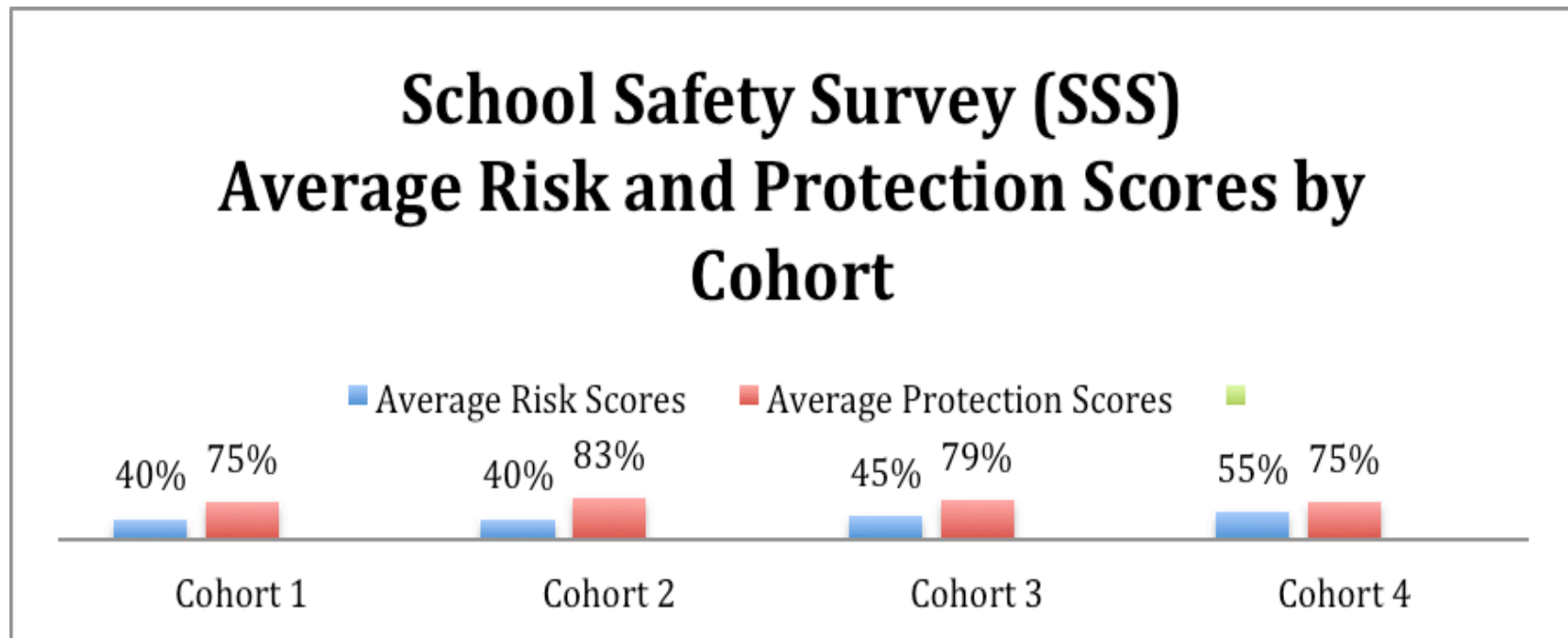


## **FRESNO COUNTY DEPARTMENT OF BEHAVIORAL HEALTH - OUTCOMES Attachment A**

---

**Graph 17 demonstrated the Average School Safety Survey results by cohort – Average Risk and Protection Scores**

**Graph 17 – January 2014-June 2014**

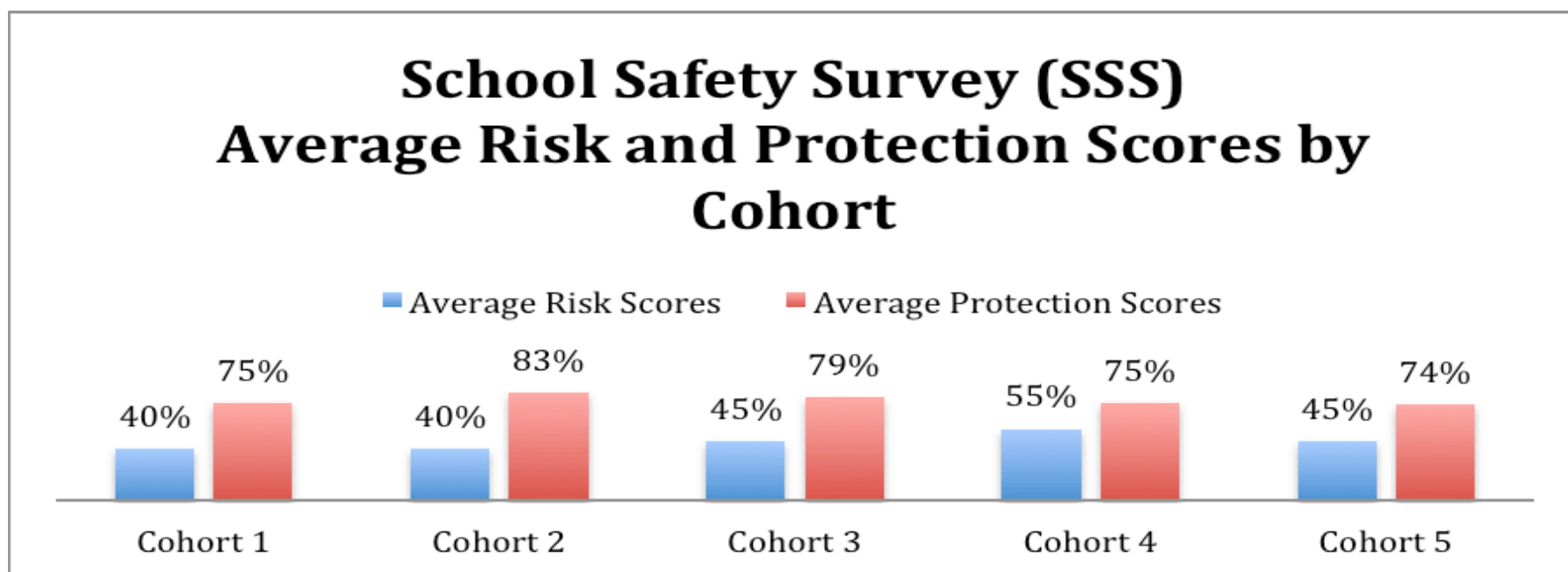


## FRESNO COUNTY DEPARTMENT OF BEHAVIORAL HEALTH - OUTCOMES Attachment A

---

Graph 18 demonstrated the Average School Safety Survey results by cohort – Average Risk and Protection Scores

Graph 18 – August 2014-June 2015



## FRESNO COUNTY DEPARTMENT OF BEHAVIORAL HEALTH - OUTCOMES Attachment A

### PBIS Training Cycle 2015-16

<b>Cohort IV</b> (AM Trainings) <b>8:00 a.m. – 11:30 a.m.</b>	<b>Oct. 8, 2015</b> <b>Day 4-1</b>	<b>Oct. 15, 2015</b> <b>Day 4-2</b>	<b>Nov. 12, 2015</b> <b>Day 4-3</b>	<b>Jan. 28, 2016</b> <b>Day 4-4</b>	<b>March 3, 2016</b> <b>Day 4-5</b>	<b>March 17, 2016</b> <b>Day 4-6</b>
	School Teams	Coaches <b>ISIS</b>	Coaches	Coaches	Coaches	Coaches
	Golden Palace	Golden Palace	Golden Palace	Golden Palace	FCOE Rm. 270	FCOE Rm. 270
<b>Cohort V</b> (PM Trainings) <b>12:00 p.m. – 3:30 p.m.</b>	<b>Oct. 8, 2015</b> <b>Day 5-1</b>	<b>Oct. 15, 2015</b> <b>Day 5-2</b>	<b>Nov. 12, 2015</b> <b>Day 5-3</b>	<b>Jan. 28, 2016</b> <b>Day 5-4</b>	<b>March 3, 2016</b> <b>Day 5-5</b>	<b>March 17, 2016</b> <b>Day 5-6</b>
	School Teams	Coaches <b>CICO</b>	Coaches	School Teams	Coaches	Coaches
	Golden Palace	Golden Palace	Golden Palace	Golden Palace	FCOE Rm. 270	FCOE Rm. 270

<b>Cohort VI</b> <b>8:30 a.m. – 3:30 p.m.</b>	<b>Sept. 10, 2015</b> <b>Day 6-1</b>	<b>Sept. 24, 2015</b> <b>Day 6-2</b>	<b>Oct. 29, 2015</b> <b>Day 6-3</b>	<b>Nov. 5, 2015</b> <b>Day 6-4</b>	<b>Feb. 11, 2016</b> <b>Day 6-5</b>	<b>Feb. 25, 2016</b> <b>Day 6-6</b>	<b>Mar. 10, 2016</b> <b>Day 6-7</b>
	School Teams	Coaches <b>SWIS</b>	School Teams	Coaches	School Teams	Coaches	Coaches
	Golden Palace	Golden Palace	Golden Palace	Golden Palace	Golden Palace	FCOE Rm. 270	FCOE Rm. 270

**Cohort IV**

**Cohort V**

**Cohort VI**