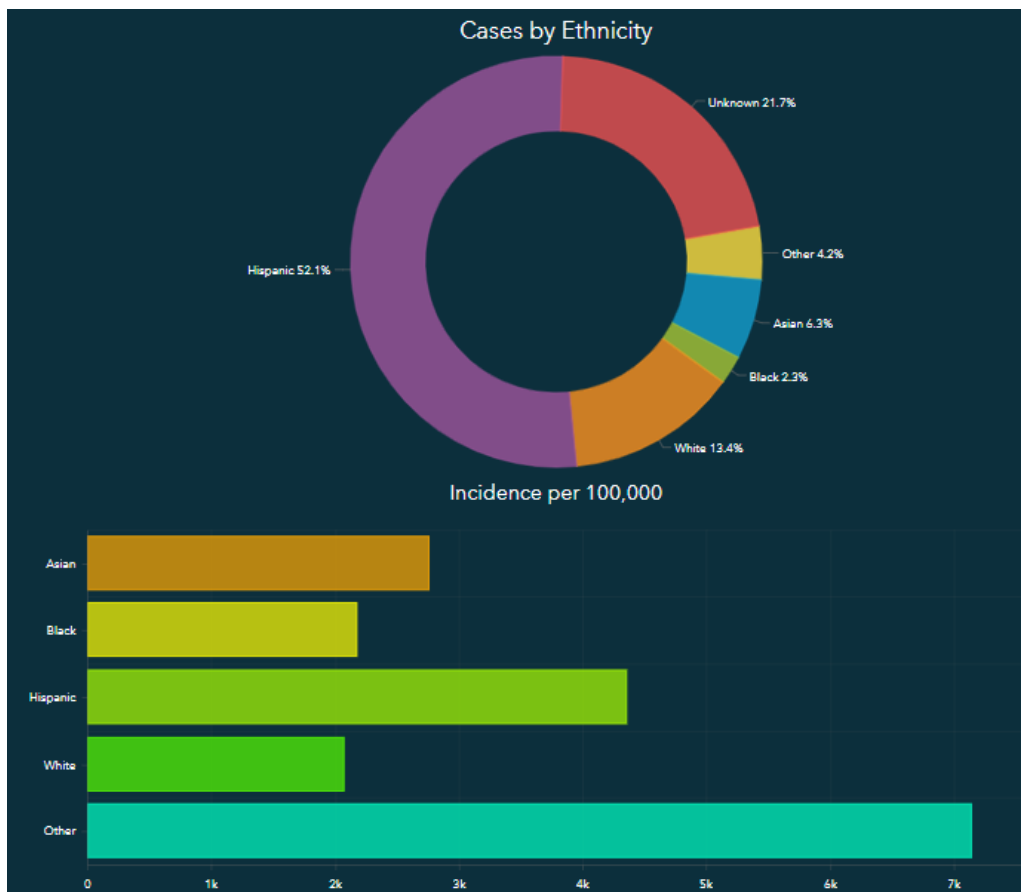
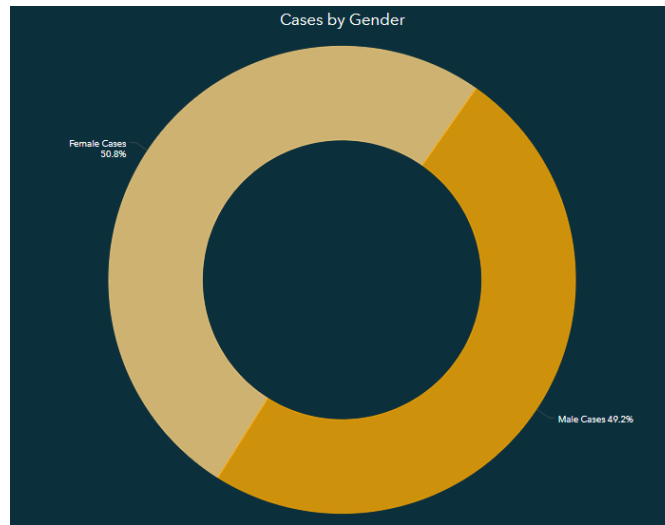


COVID-19

Additional Epidemiology
Surveillance Update
Fresno County, CA

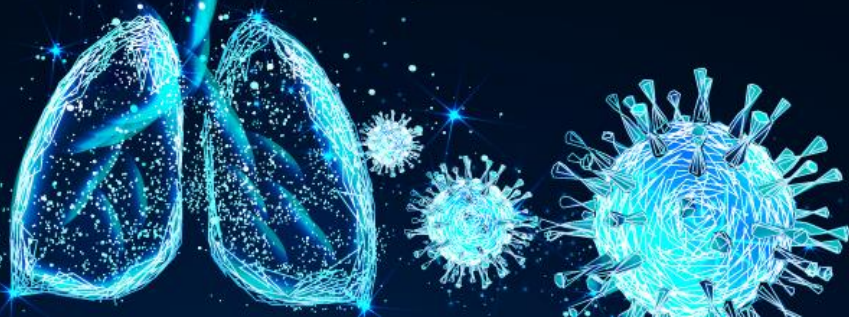
-All reported numbers are preliminary and subject to change based on further investigation-

COVID-19 Demographic Trends

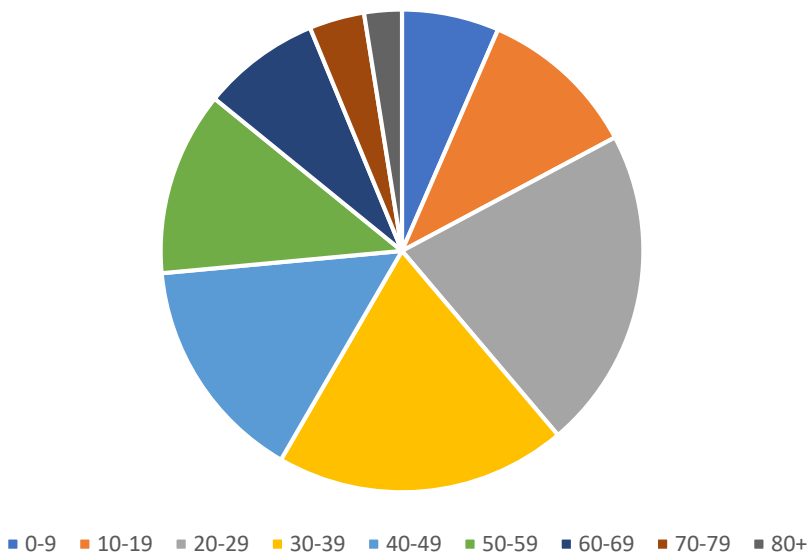


COVID-19

Additional Epidemiology
Surveillance Update
Fresno County, CA

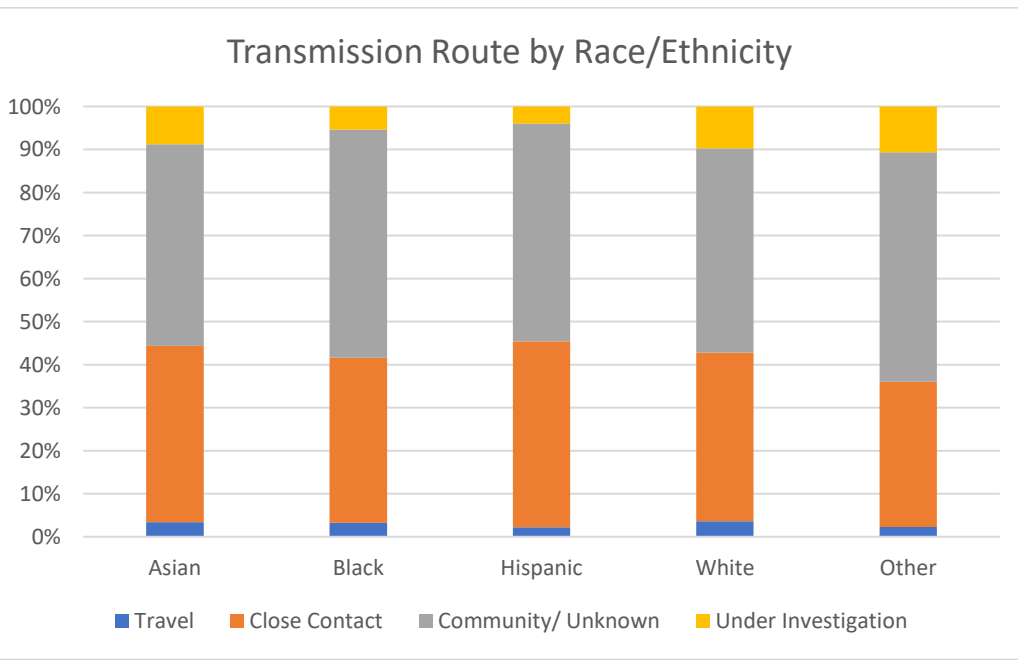


Cases by Age



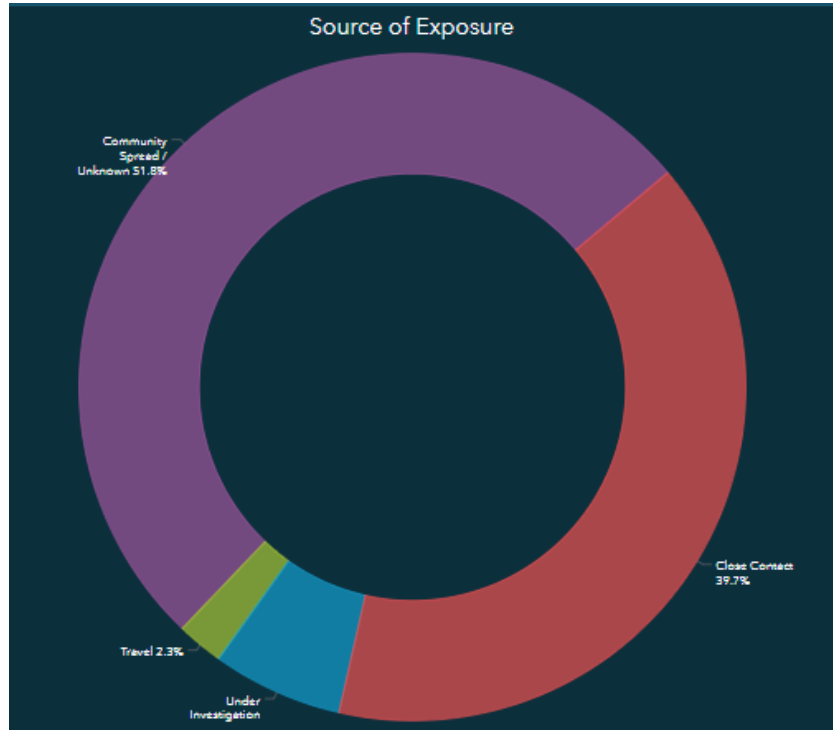
Transmission

Transmission Route by Race/Ethnicity

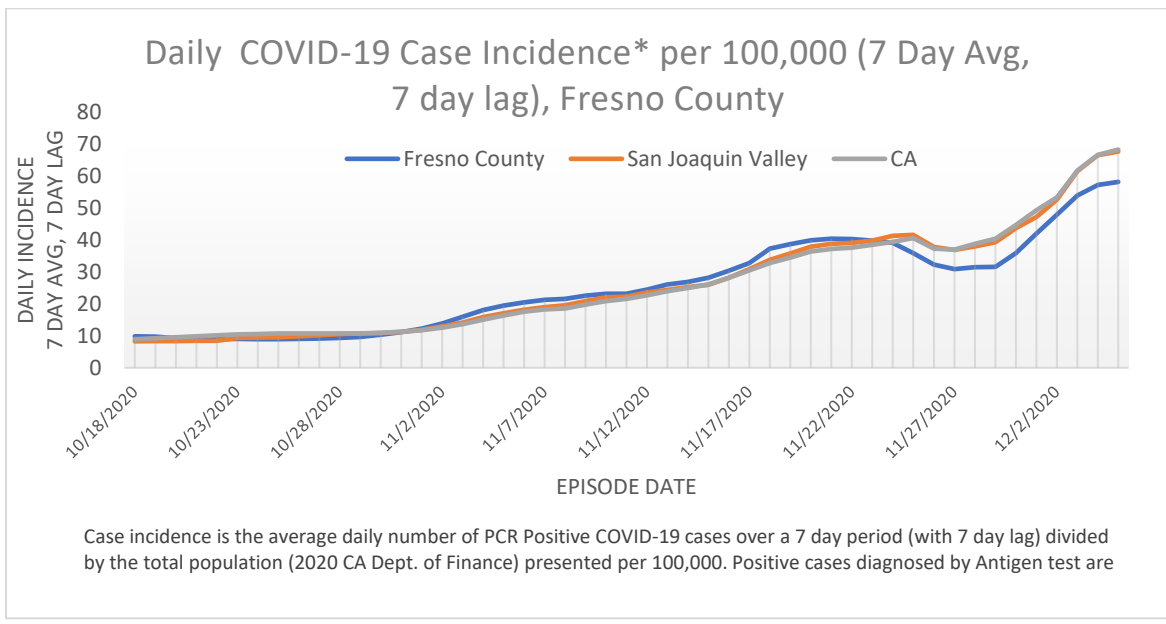


COVID-19

Additional Epidemiology
Surveillance Update
Fresno County, CA



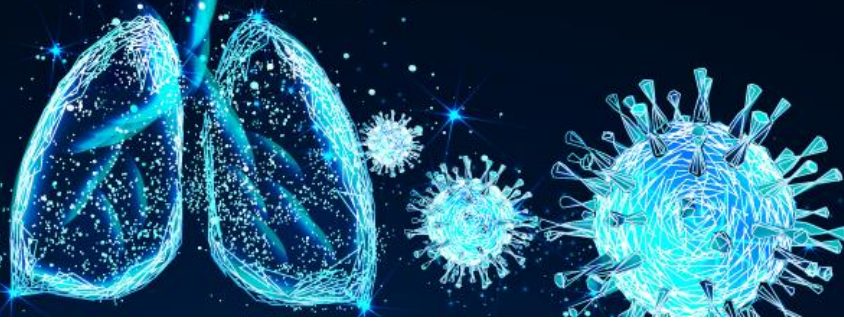
Temporal Trends



COVID-19

Additional Epidemiology Surveillance Update

Fresno County, CA

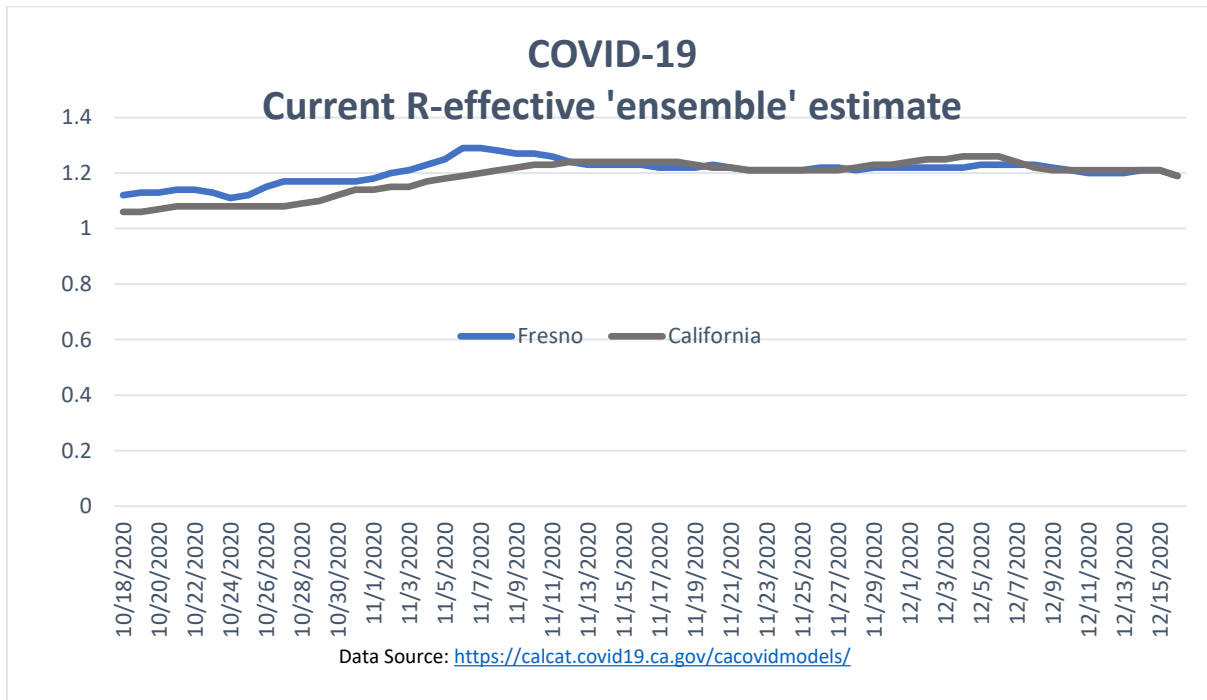


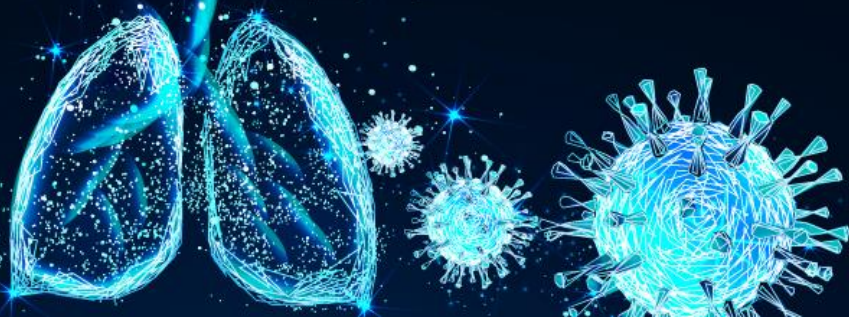
The reproductive number (R) is used to estimate the transmissibility of an infectious agent. It is not a straightforward calculation but a complex statistical calculation that is affected by a large number of factors and assumptions associated with the biological characteristics of the virus, environmental factors, and socio-behaviors factors. It is not a biological constant of a virus and is not a measure of disease severity.

There is the basic reproduction number (R0) and the current reproduction number (Rt). R0 is associated with the transmission potential of a disease and initial spread. It is an estimate of the average number of secondary infections produced by a typical case when everyone is susceptible. It can be used as an early warning system of the possibility of an epidemic or pandemic. The R effective is the estimated transmission at a given time (t) and is used to account for potential immunity or intervention measures in place.

R is measured through modeling and thus is dependent on the model's assumptions. Due to this several groups have produced different R's based on differences in the modeling. The California COVID Assessment Toll (CalCAT) graphs several of these different models and reports an "Ensemble estimate". For more information on what models

Please go to <https://calcat.covid19.ca.gov/cacovidmodels/>





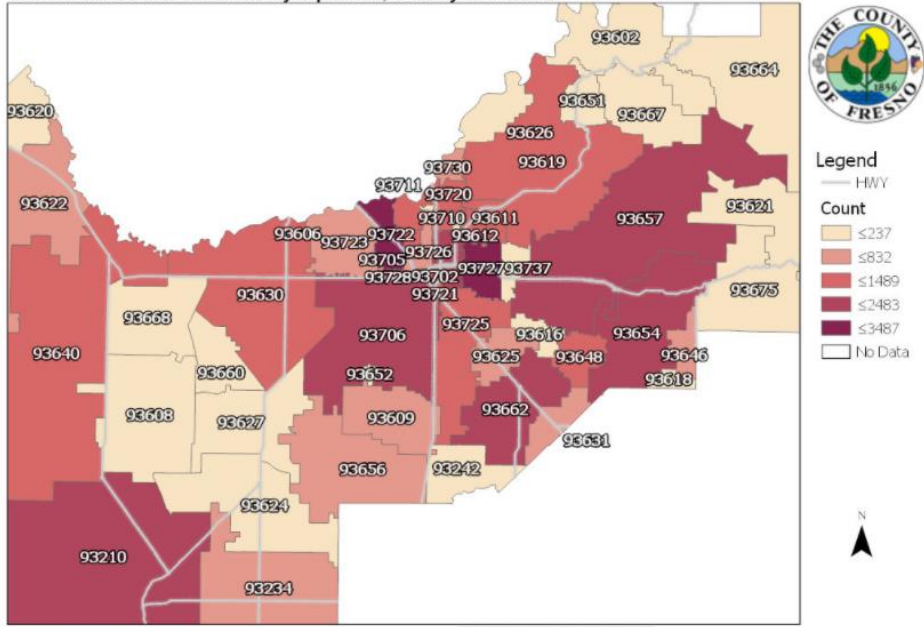
COVID-19

Additional Epidemiology Surveillance Update

Fresno County, CA

COVID-19 Spatial Trends

Confirmed COVID-19 Cases by Zip Code, County of Fresno



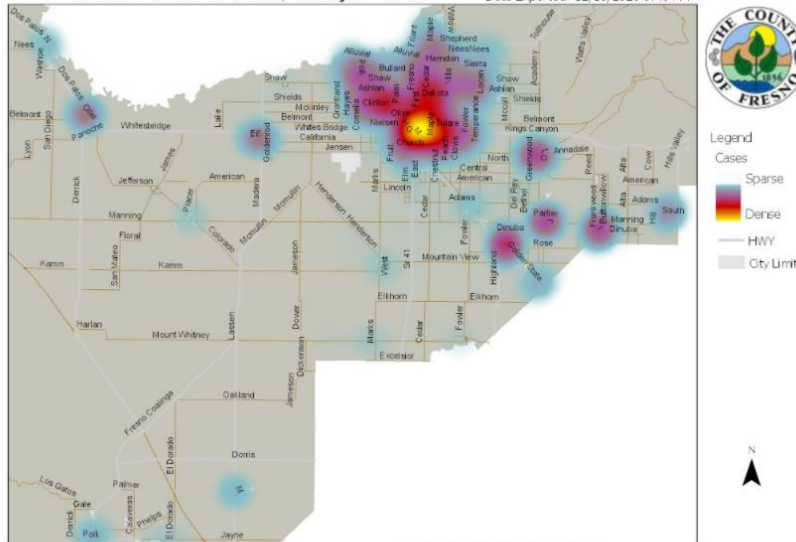
Source: California Reportable Disease Information Exchange (CalREDIE)

County of Fresno
Department of Public Health
Community Health Division, Epidemiology Section
(559) 600-3307

Updated: 12/16/2020 6:26 PM

Confirmed COVID-19 Cases, County of Fresno

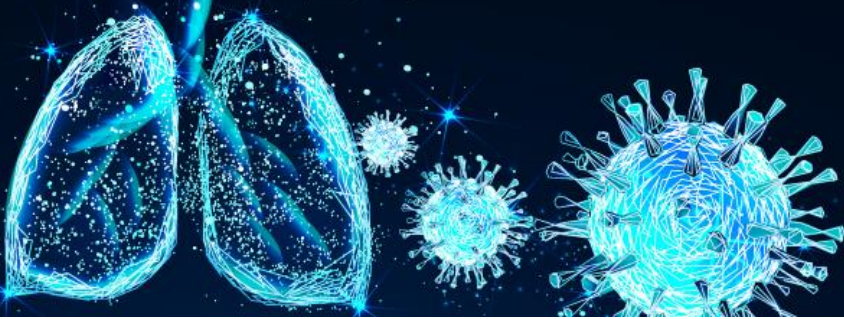
Date Exported: 12/16/2020 6:40 PM



Source: California Reportable Disease Information Exchange (CalREDIE)

County of Fresno
Department of Public Health
Community Health Division, Epidemiology Section
(559) 600-3307

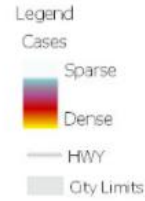
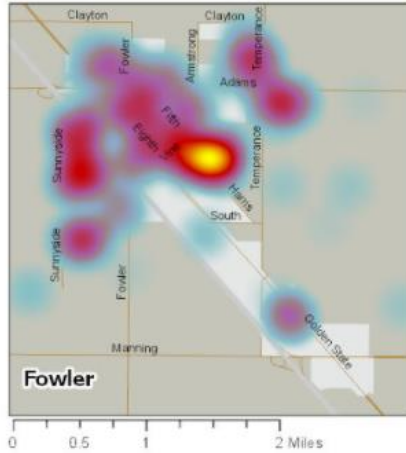




COVID-19

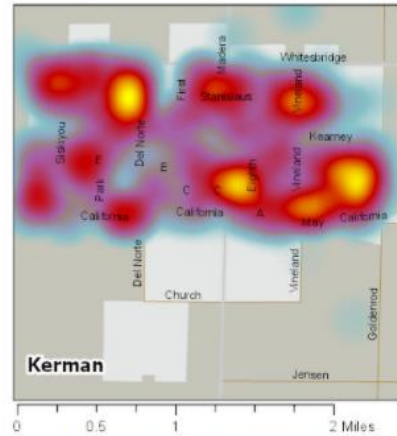
Additional Epidemiology
Surveillance Update
Fresno County, CA

COVID-19 Cases in Fowler, San Joaquin, and Parlier, County of Fresno

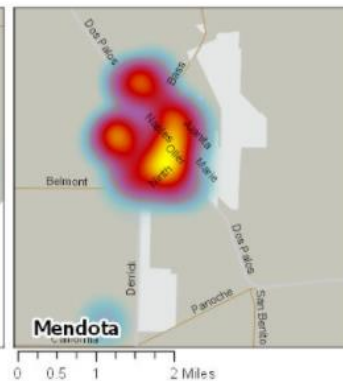
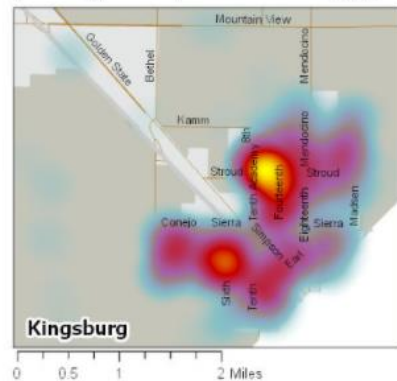


Date Exported: 12/16/2020 6:52 PM

COVID-19 Cases in Kerman, Kingsburg, and Mendota, County of Fresno

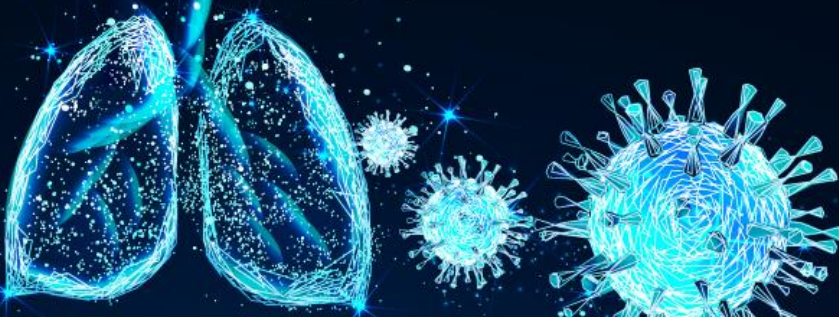


Date Exported: 12/16/2020 6:49 PM



Source: California Reportable Disease Information Exchange (CalREDIE)



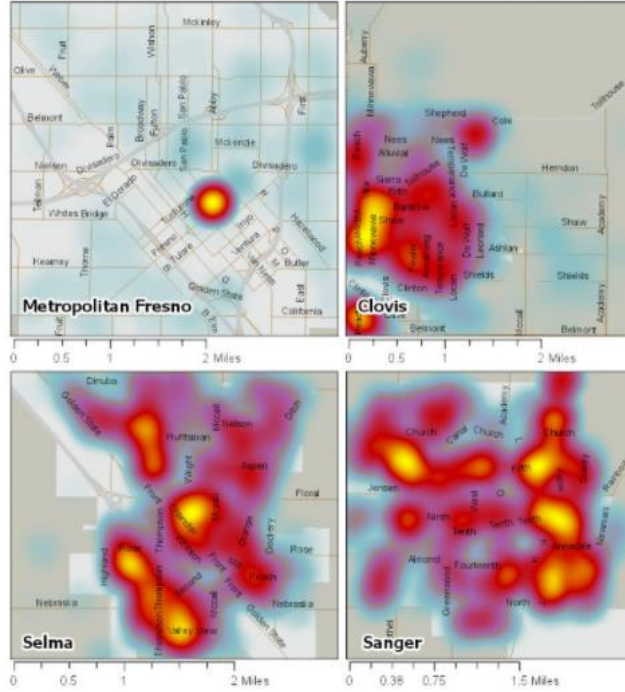


COVID-19

Additional Epidemiology Surveillance Update

Fresno County, CA

COVID-19 Cases, County of Fresno



Source: California Reportable Disease Information Exchange (CalREDIE)
 Date Exported: 12/16/2020 6:44 PM



Confirmed COVID-19 Cases, Reedley, County of Fresno

Exported: 12/16/2020 6:46 PM

