

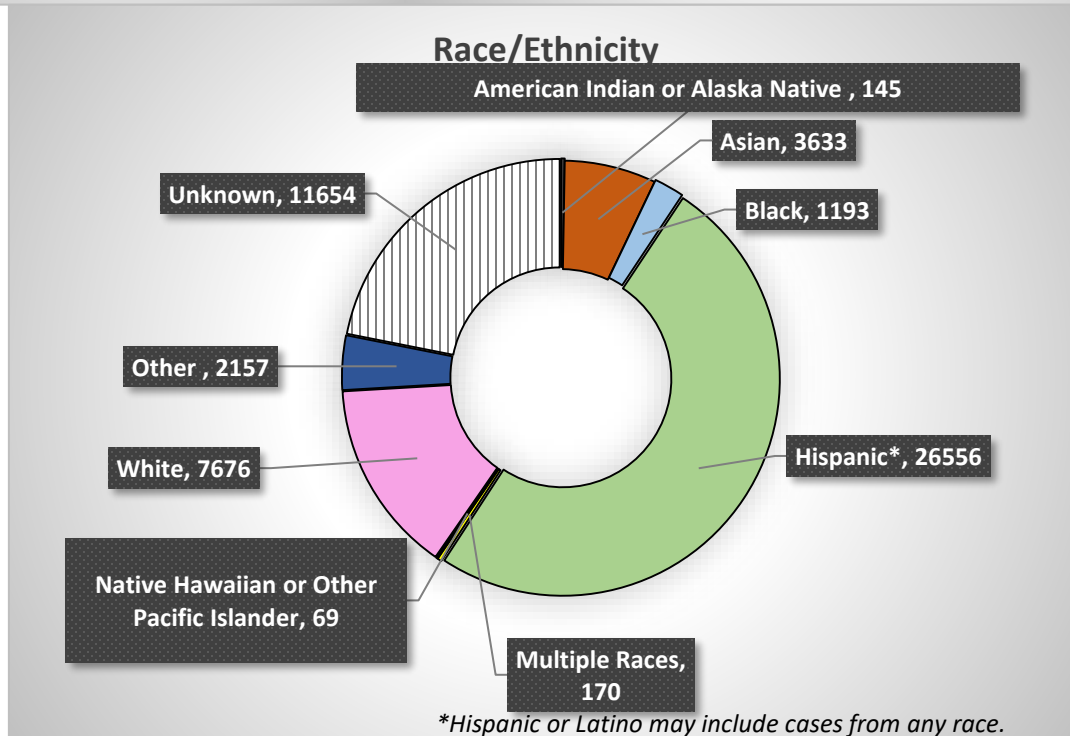
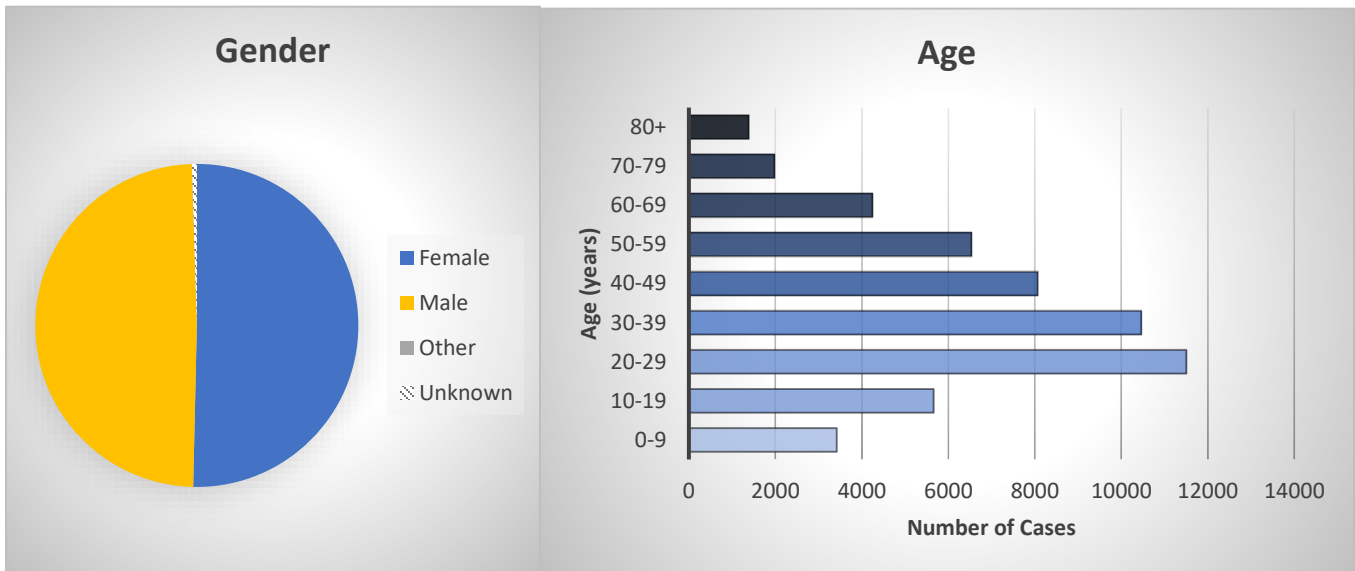
# COVID-19

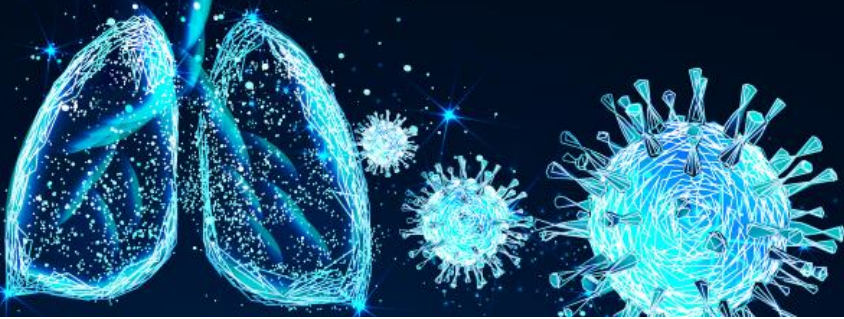
Additional Epidemiology  
Surveillance Update  
Fresno County, CA

**-All reported numbers are preliminary and subject to change based on further investigation-**

Data below represents COVID-19 cases with a confirmed status in CalREDIE. Confirmed cases only include lab reported PCR positives and not cases diagnosed using Antigen testing. The total case counts and new cases per day on the main dashboard represent all provider or lab reported positives; some of these will include suspected cases reported by provider report that are in the process of being confirmed by lab report. Due to this the counts reflected in the figures below may be less than the total number reported.

## COVID-19 Demographic Trends



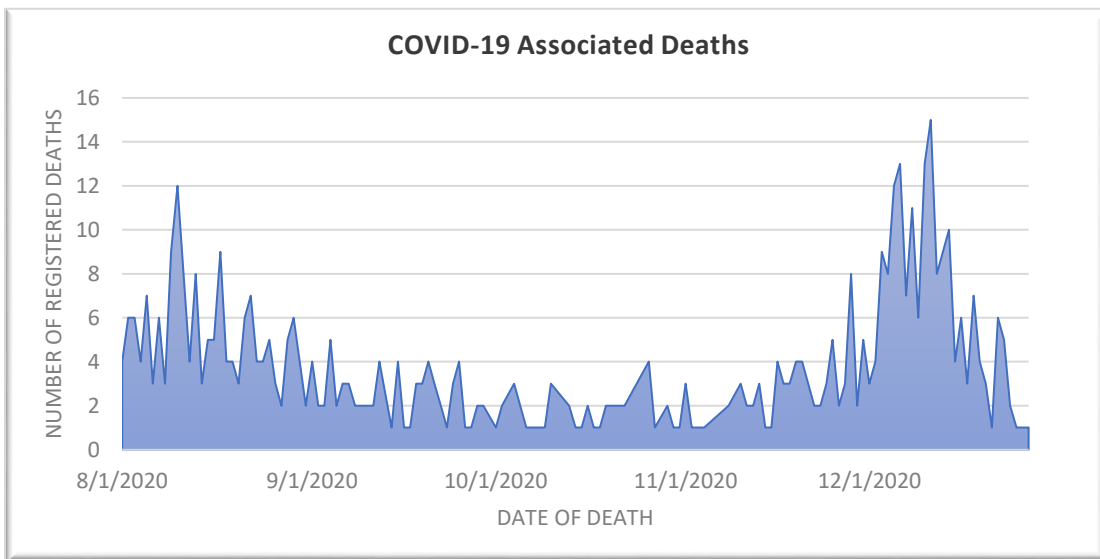
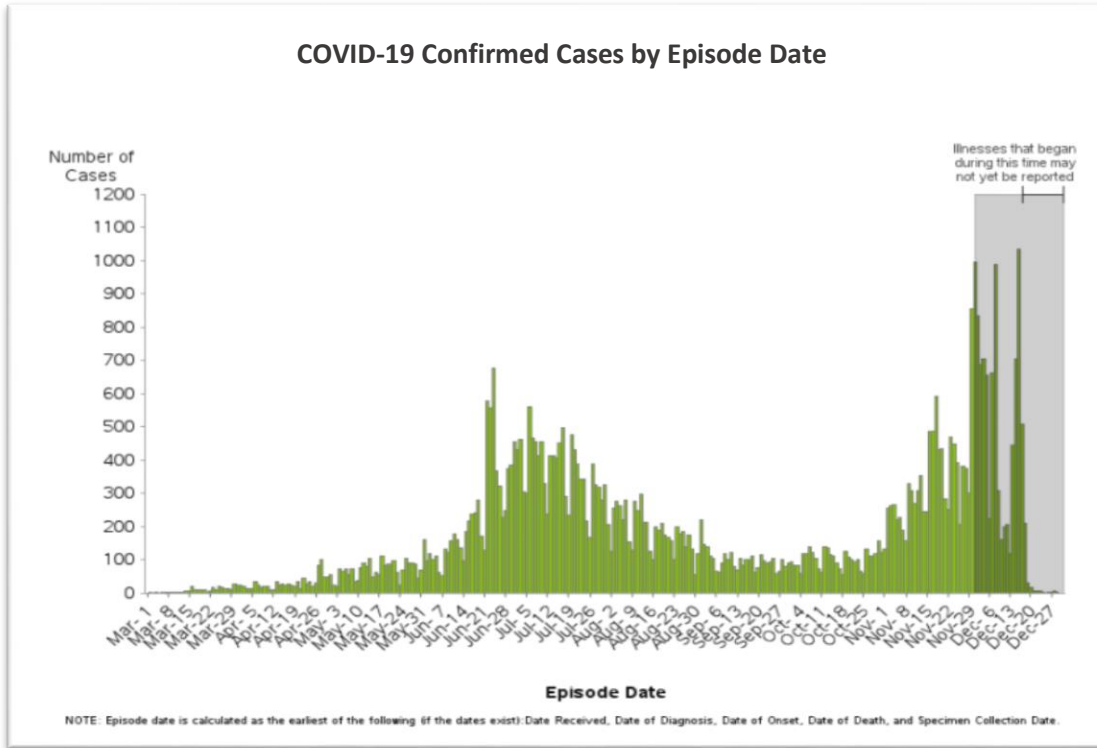


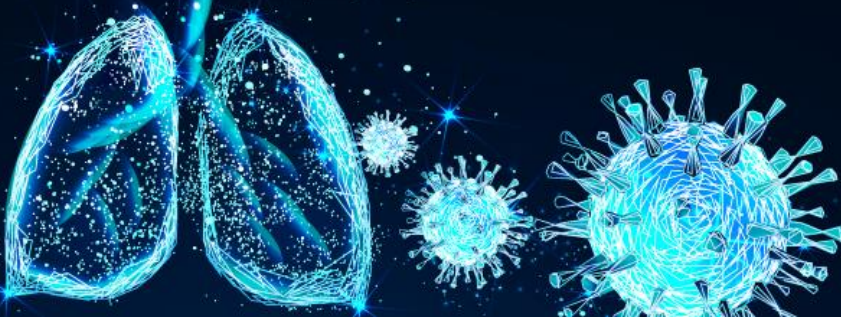
# COVID-19

## Additional Epidemiology Surveillance Update

Fresno County, CA

### Temporal Trends





# COVID-19

## Additional Epidemiology Surveillance Update

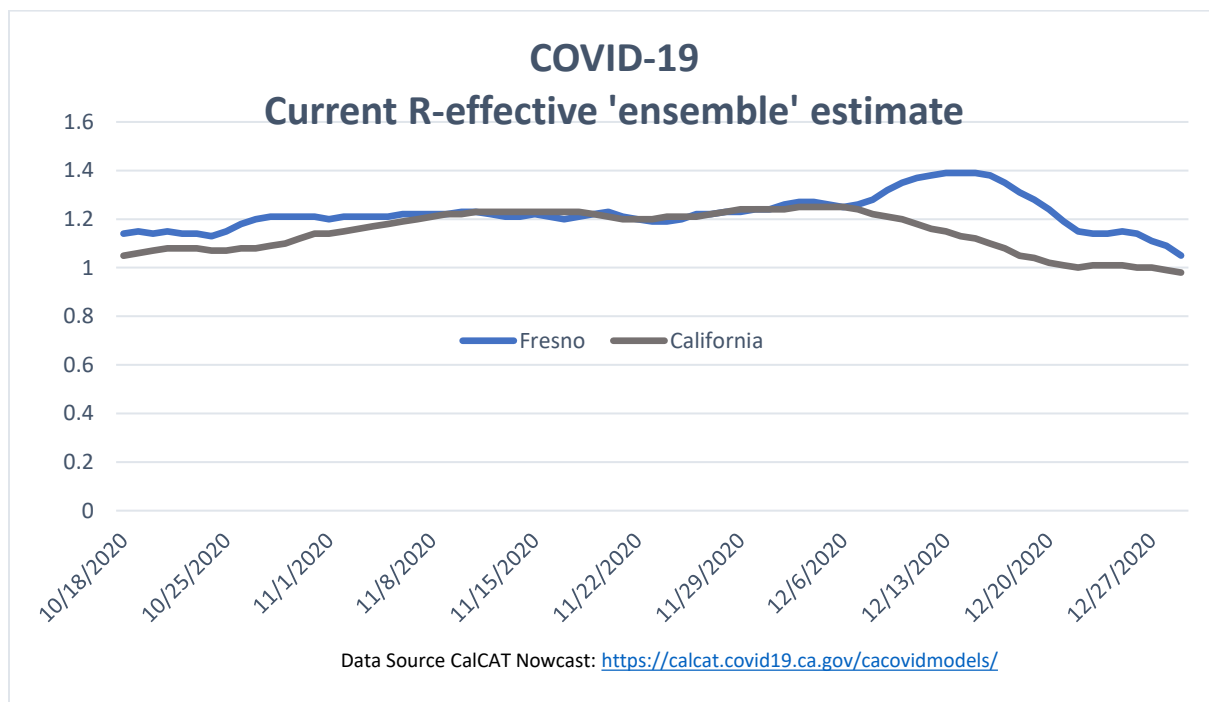
Fresno County, CA

The reproductive number (R) is used to estimate the transmissibility of an infectious agent. It is not a straightforward calculation but a complex statistical calculation that is affected by a large number of factors and assumptions associated with the biological characteristics of the virus, environmental factors, and socio-behaviors factors. It is not a biological constant of a virus and is not a measure of disease severity.

There is the basic reproduction number (R0) and the current reproduction number (Rt). R0 is associated with the transmission potential of a disease and initial spread. It is an estimate of the average number of secondary infections produced by a typical case when everyone is susceptible. It can be used as an early warning system of the possibility of an epidemic or pandemic. The R effective is the estimated transmission at a given time (t) and is used to account for potential immunity or intervention measures in place.

R is measured through modeling and thus is dependent on the model's assumptions. Due to this several groups have produced different R's based on differences in the modeling. The California COVID Assessment Toll (CalCAT) graphs several of these different models and reports an "Ensemble estimate". For more information on what models

Please go to <https://calcat.covid19.ca.gov/cacovidmodels/>



# COVID-19

Additional Epidemiology  
Surveillance Update  
Fresno County, CA

## COVID-19 Spatial Trends

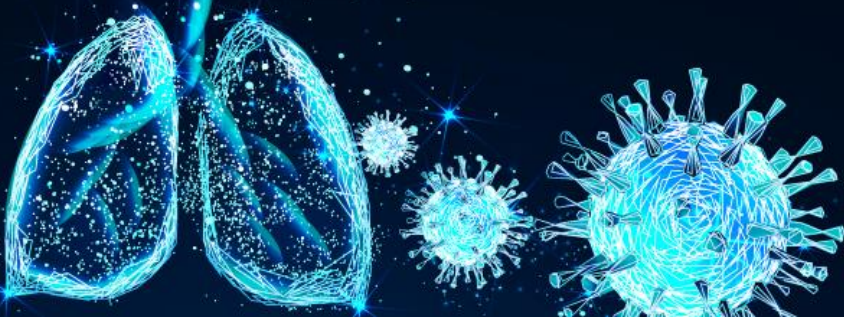
Top zipcodes for COVID-19 confirmed cases <sup>1</sup>

Zipcode	Total Confirmed PCR Positives
93650	164
93616	177
93242	183
93737	244
93660	252
93730	344
93656	367
93609	377
93625	523
93234	526
93723	542
93622	555
93701	571
93728	698
93631	700
93646	915
93704	920
93711	1072
93710	1184
93640	1248
93619	1255
93612	1275
93630	1479
93611	1491
93720	1538
93725	1574
93721	1589
93648	1652
93705	1771
93703	1849
93654	2018
93726	2091
93706	2368
93657	2384
93662	2389
93210	2531
93702	2846
93727	4101
93722	4139

<sup>1</sup> Data retrieved from REDCap database, confirmed by PCR test. A confirmed COVID-19 case. Please note that the zipcodes below represent the home residence, they may or may not reflect where the case was exposed. Only Zipcodes with greater than 100 cumulative cases shown.





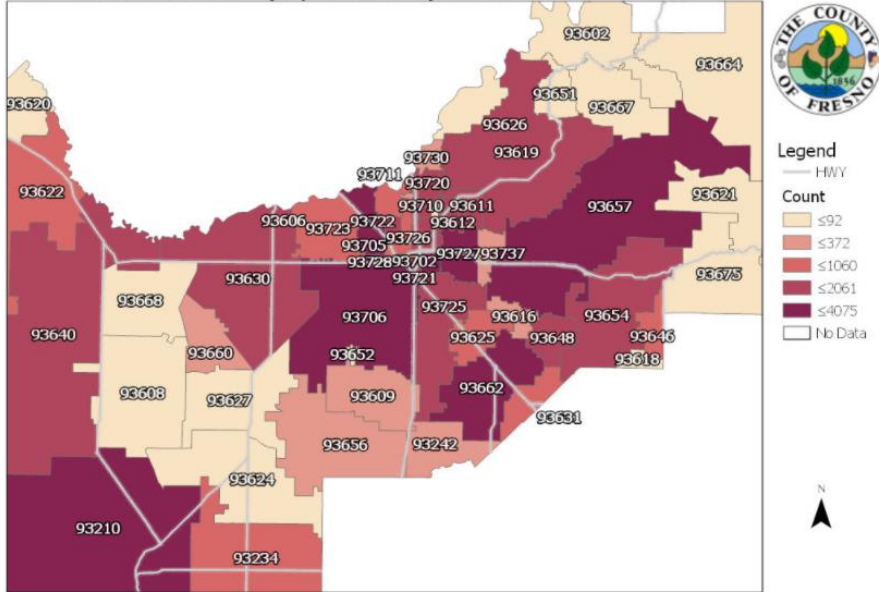


# COVID-19

## Additional Epidemiology Surveillance Update

### Fresno County, CA

Confirmed COVID-19 Cases by Zip Code, County of Fresno



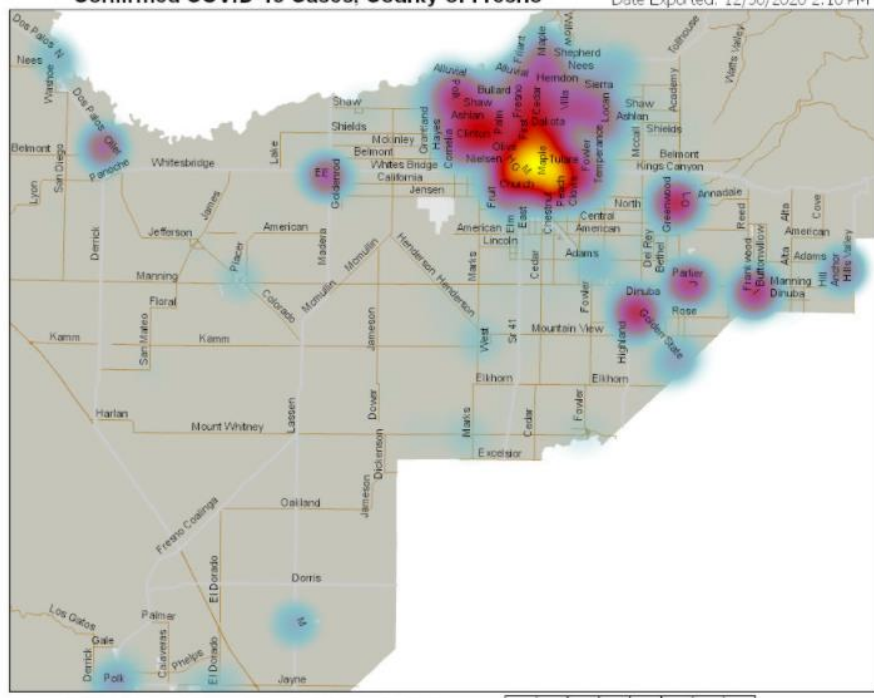
- Legend
- HWY
  - Count
  - ≤92
  - ≤372
  - ≤1060
  - ≤2061
  - ≤4075
  - No Data



Source: California Reportable Disease Information Exchange (CalREDIE) 0 5 10 20 Miles  
 County of Fresno Department of Public Health Community Health Division, Epidemiology Section (559) 400-3307 Updated: 12/30/2020 4:59 PM

Confirmed COVID-19 Cases, County of Fresno

Date Exported: 12/30/2020 2:10 PM

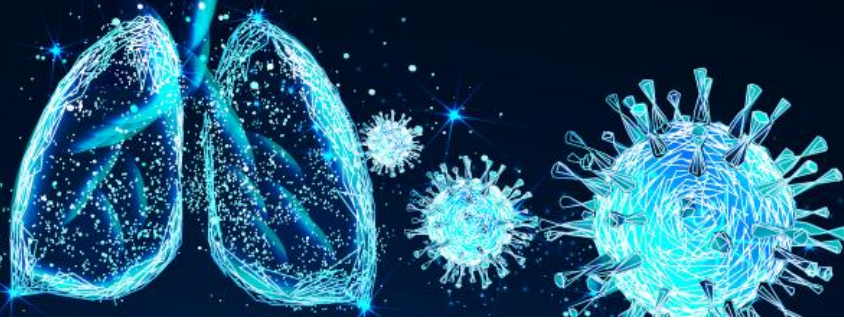


- Legend
- Cases
  - Sparse
  - Dense
  - HWY
  - City Limits



Source: California Reportable Disease Information Exchange (CalREDIE) 0 5 10 20 Miles



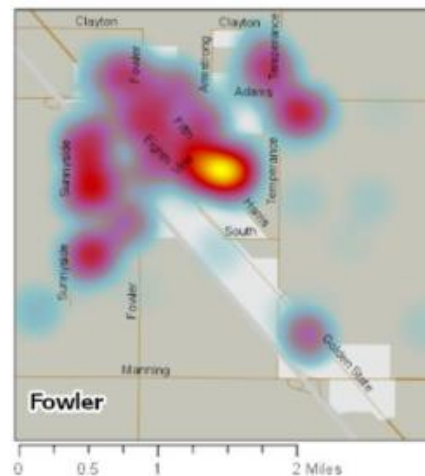
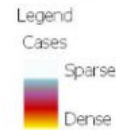


# COVID-19

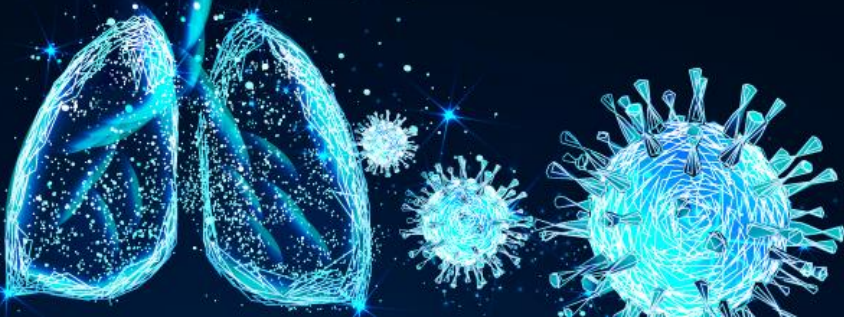
Additional Epidemiology  
Surveillance Update  
Fresno County, CA



Source: California Reportable Disease Information Exchange (CaREDIE)  
Date Exported: 12/30/2020 2:17 PM



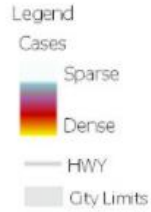
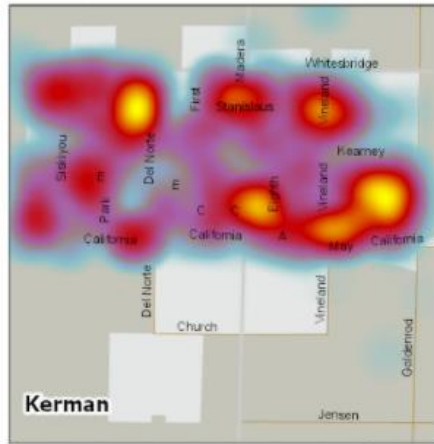




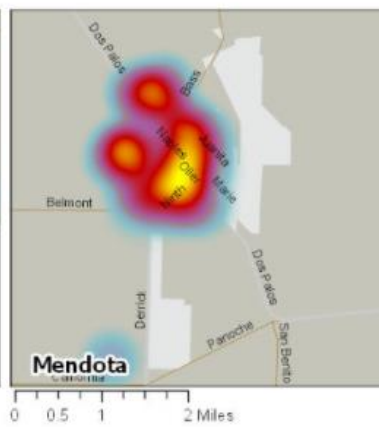
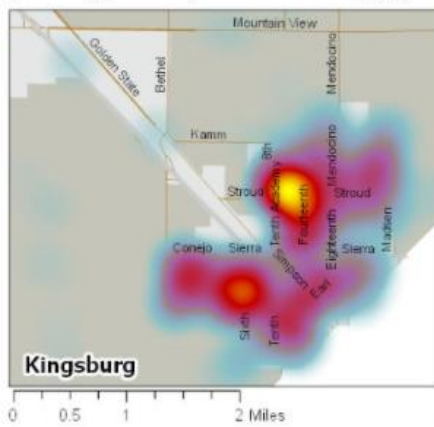
# COVID-19

## Additional Epidemiology Surveillance Update

Fresno County, CA

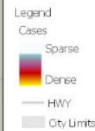
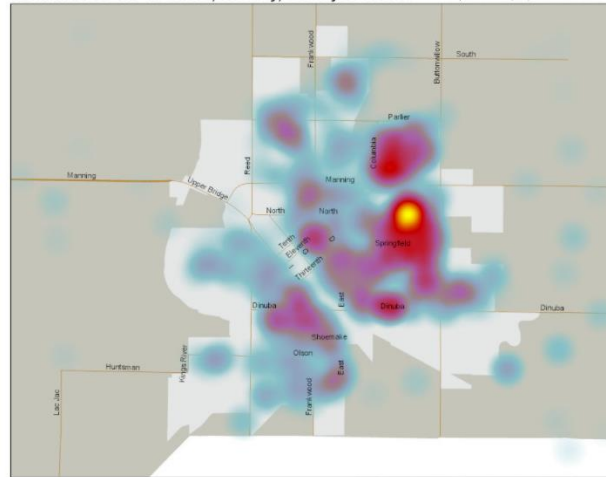


Date Exported: 12/30/2020 2:37 PM



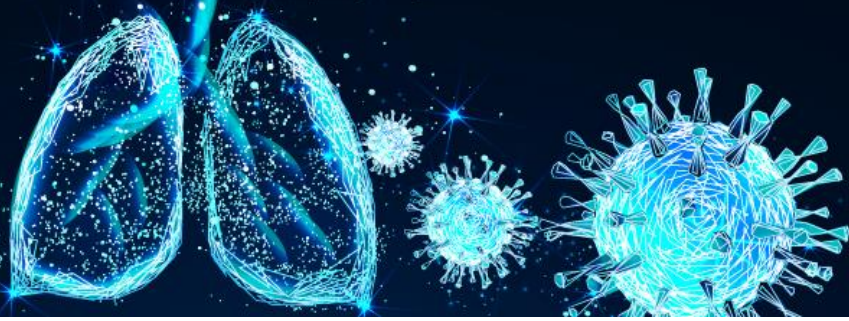
Confirmed COVID-19 Cases, Reedley, County of Fresno

Exported: 12/30/2020 2:14 PM



Source: California Reportable Disease Information Exchange (CaREDIE)





# COVID-19

## Additional Epidemiology Surveillance Update

Fresno County, CA

