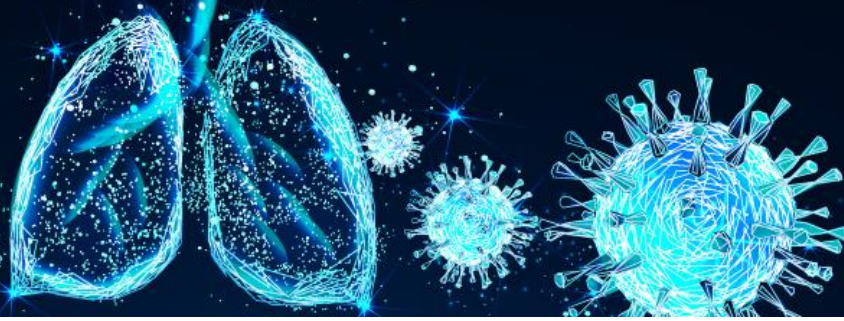


# COVID-19

## Case Investigation & Contact Tracing Update Fresno County, CA



This report provides information about COVID-19 confirmed and probable case investigation and contact tracing efforts by the Fresno County Department of Public Health.

Case investigation and contact tracing are core intervention strategies utilized to try to slow the spread of COVID-19 by preventing additional exposures and cases. The main goal is to stop chains of transmission by 1) notifying those who have tested positive to isolate away from others, 2) collect case information including potential close contacts, 3) notify close contacts of the potential exposure and need to quarantine away from others, & 4) provide education and support to help with the ability to isolate/quarantine.

### Data associated with cases created from 1-1-2021 through 3-12-2021

Total Eligible Cases <sup>1</sup> 28,457	Cases with Outreach Initiated 97%	Cases Successfully Contacted 65%
Total Eligible Contacts Elicited <sup>2</sup> 5,067	Contacts with Outreach Initiated 90%	Contacts Notified 66%

### Data associated with cases created from 3-1-2021 through 3-12-2021

Total Eligible Cases <sup>1</sup> 1,706	Cases with Outreach Initiated 97%	Cases Successfully Contacted 73%
Total Eligible Contacts Elicited <sup>2</sup> 487	Contacts with Outreach Initiated 93%	Contacts Notified 73%

<sup>1</sup> Total cases – Excluded cases (Exclusions: resident in congregate setting, deceased/intubated/ICU and/or delayed lab >10 days post collection)

<sup>2</sup> Total elicited contact– Excluded contacts (Exclusions: elicited contacts >14 days after last exposure, was a case within the past 90 days, duplicate, and/or resident in congregated setting)

Data Source: CalConnect. All data preliminary.

