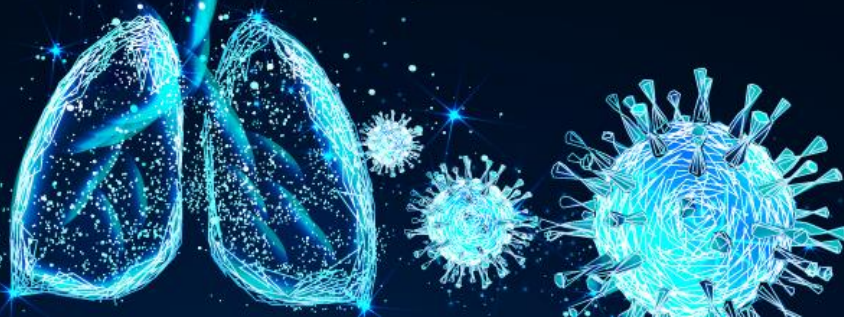


# COVID-19

## Case Investigation & Contact Tracing Update Fresno County, CA



This report provides information about COVID-19 confirmed and probable case investigation and contact tracing efforts by the Fresno County Department of Public Health.

Case investigation and contact tracing are core intervention strategies utilized to try to slow the spread of COVID-19 by preventing additional exposures and cases. The main goal is to stop chains of transmission by 1) notifying those who have tested positive to isolate away from others, 2) collect case information including potential close contacts, 3) notify close contacts of the potential exposure and need to quarantine away from others, & 4) provide education and support to help with the ability to isolate/quarantine.

### Data associated with cases created from 1-1-2021 through 6-16-2021

Total Eligible Cases <sup>1</sup> 33,641	Cases with Outreach Initiated 98%	Cases Successfully Contacted 67%
Total Eligible Contacts Elicited <sup>2</sup> 6,357	Contacts with Outreach Initiated 89%	Contacts Notified 67%

### Data associated with cases created from 6-2-2021 through 6-16-2021

Total Eligible Cases <sup>1</sup> 309	Cases with Outreach Initiated 100%	Cases Successfully Contacted 57.3%
Total Eligible Contacts Elicited <sup>2</sup> 56	Contacts with Outreach Initiated 95%	Contacts Notified 79%

<sup>1</sup> Total cases – Excluded cases (Exclusions: resident in congregate setting, deceased/intubated/ICU and/or delayed lab >10 days post collection)

<sup>2</sup> Total elicited contact– Excluded contacts (Exclusions: elicited contacts >14 days after last exposure, was a case within the past 90 days, duplicate, and/or resident in congregated setting)

Data Source: CalConnect. All data preliminary.

