



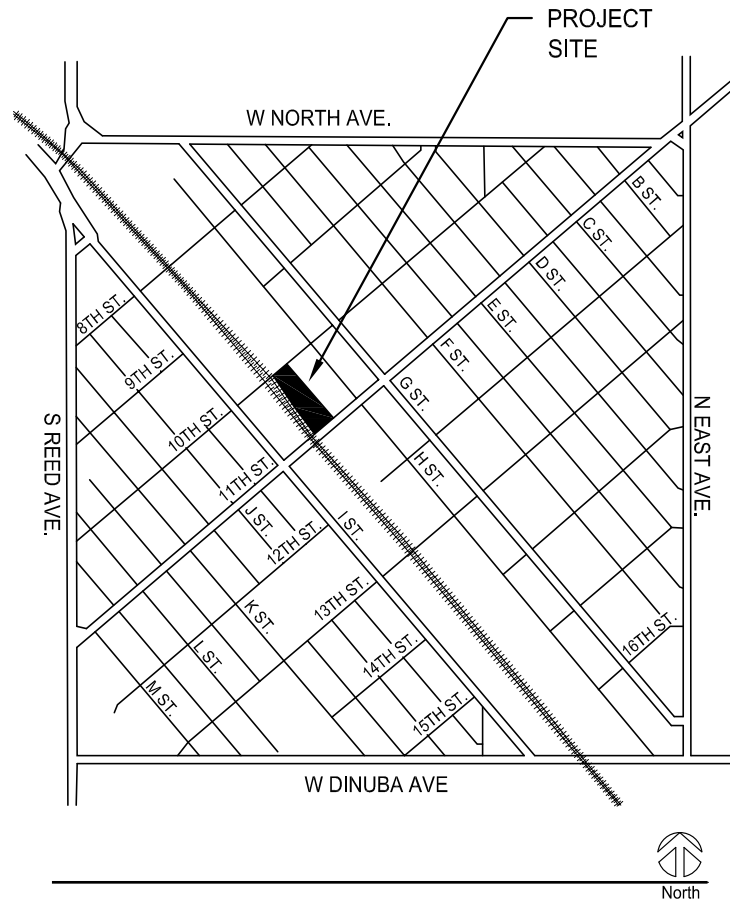
## Exhibit A - Rendering

Page 1 of 5

Department of Public Works and Planning | Development Services & Capital Projects Division | Steven E. White, Director

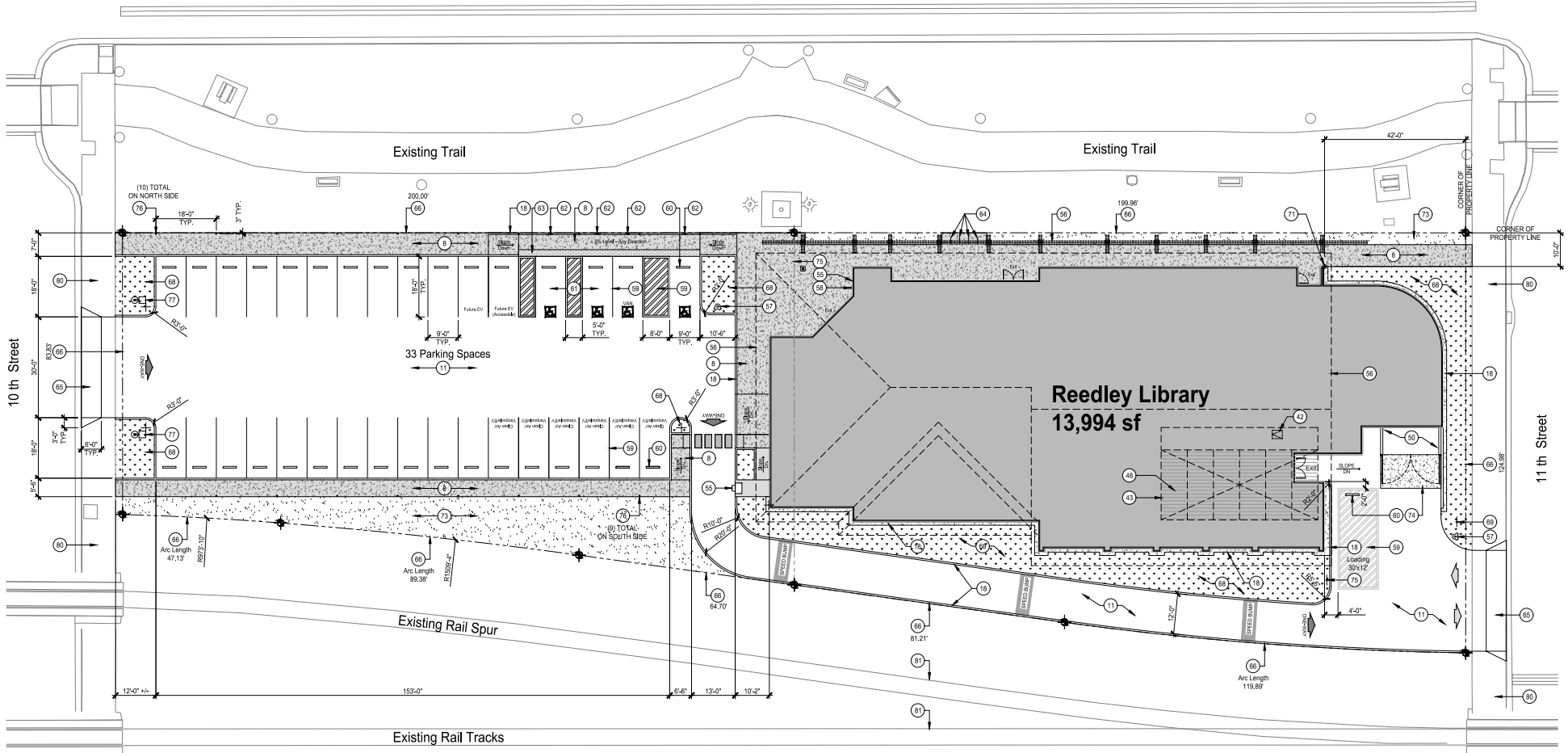
County of Fresno





## Exhibit B - Vicinity Map





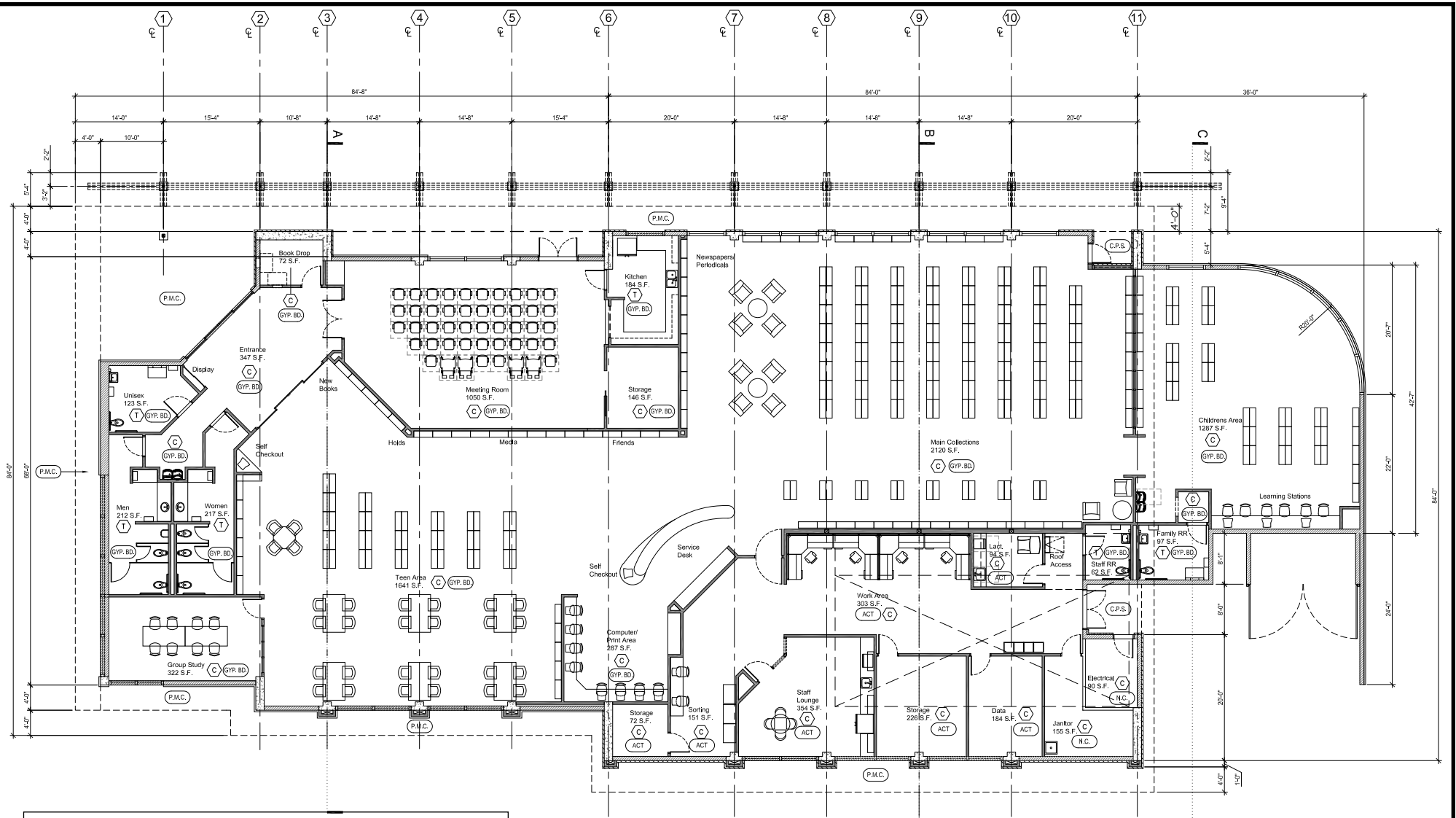
**Keynotes**

- |  |   |  |  |
|--|---|--|--|
| 1. NATIVE SOIL.  | 14. WIDE FLANGE STEEL BEAM.                         | 24. THIN FACE BRICK (2 1/4"x7 5/8" X 9 1/8" THK, TYPE "X" WIRE-CUT) SYSTEM OVER SCRATCH COAT OVER METAL LATH OVER DRAINAGE MAT OVER R-19 ISO BOARD INSULATION OVER WATER RESISTANT BARRIER, POINTING - CONCAVE WITH TYPE "N" MORTAR. | 29. PRE-FINISHED INSULATED METAL ROOF PANEL OVER "C" PURLIN.   |
| 2. ENGINEERED FILL.  | 15. WIDE FLANGE STEEL OUTRIGGER BEAM.               | 25. PRE-FINISHED METAL WALL PANEL OVER HAT SHAPED SUB-GIRT OVER Z-GIRT AND R-19 ISO BOARD CONTINUOUS INSULATION OVER WATER RESISTANT BARRIER.  | 30. CORRUGATED METAL ROOF DECKING.   |
| 3. CONCRETE FOOTING.   | 16. LIGHT GAUGE METAL FRAMING.                      | 26. PRE-FINISHED CURVED METAL WALL PANEL OVER HAT SHAPED SUB-GIRT OVER Z-GIRT AND R-19 ISO BOARD CONTINUOUS INSULATION OVER WATER RESISTANT BARRIER.   | 31. ASPHALT MODIFIED BITUMINOUS ROOFING OVER 1/2" ROOF BOARD OVER RIGID INSULATION.                      |
| 4. MOISTURE BARRIER DIRECTLY OVER COMPACTED ENGINEERED FILL. | 17. TUBE STEEL FRAMING, PAINT.                      | 27. PRE-FINISHED METAL SOFFIT PANEL "PAC-CLAD ARCHITECTURAL METAL" OR EQUAL.   | 32. RIDGE VENT SYSTEM.   |
| 5. CONCRETE SLAB.  | 18. CONCRETE CURB/ MAINTENANCE STRIP.               | 28. PRE-FINISHED PERFORATED (MAX. HOLE SIZE 1/8" DIA.) METAL SOFFIT PANEL "PAC-CLAD ARCHITECTURAL METAL" OR EQUAL.   | 33. HOLLOW METAL PAINTED WINDOW FRAME WITH DOUBLE PANE GLAZING.  |
| 6. CONCRETE PILASTER.  | 19. ROOF LEADER.                                    | 34. ANODIZED ALUMINUM STOREFRONT WINDOW SYSTEM.  | 34. ANODIZED ALUMINUM STOREFRONT WINDOW SYSTEM.  |
| 7. CONCRETE POST.  | 20. ROOF GUTTER SYSTEM WITH S.S. MESH GUTTER GUARD. | 35. HOLLOW METAL DOOR AND FRAME.   | 35. HOLLOW METAL DOOR AND FRAME.   |
| 8. CONCRETE WALK.  | 21. BRASS DOWNSPOUT NOZZLE.                         | 36. ANODIZED ALUMINUM STOREFRONT DOOR.   | 36. ANODIZED ALUMINUM STOREFRONT DOOR.   |
| 9. 8" THICK REINFORCED C.M.U. WALL, FULLY GROUTED.           | 22. FOIL FACED FIBERGLASS BATT ATTIC INSULATION.    | 37. GYP. BOARD CEILING OVER METAL JOIST, PAINT.  | 37. GYP. BOARD CEILING OVER METAL JOIST, PAINT.  |
| 10. TUBE STEEL COLUMN.                                       | 23. ISO BOARD INSULATION.                           | 38. SUSPENDED ACOUSTICAL TILE CEILING SYSTEM.  | 38. SUSPENDED ACOUSTICAL TILE CEILING SYSTEM.  |
| 11. ASPHALT PAVEMENT.  |   | 39. DIAMOND POLISHED CONCRETE FINISH, TYPICAL THROUGHOUT ALL AREAS EXCEPT RESTROOMS.   | 39. DIAMOND POLISHED CONCRETE FINISH, TYPICAL THROUGHOUT ALL AREAS EXCEPT RESTROOMS.                     |
| 12. OPEN WEB STEEL TRUSS.                                    |   | 40. QUARRY TILE FLOORING WITH COLORED EPOXY GROUT, TYPICAL THROUGHOUT ALL RESTROOMS.   | 40. QUARRY TILE FLOORING WITH COLORED EPOXY GROUT, TYPICAL THROUGHOUT ALL RESTROOMS.                     |
| 13. STEEL "C" JOIST.   |   | 41. BUILDING OUTLINE BEHIND - SHOWN FOR REFERENCE.   | 41. BUILDING OUTLINE BEHIND - SHOWN FOR REFERENCE.   |
|  |   | 42. ROOF ACCESS HATCH.   | 42. ROOF ACCESS HATCH.   |
|  |   | 43. ROOFTOP MECHANICAL UNIT CHASE.   | 43. ROOFTOP MECHANICAL UNIT CHASE.   |
|  |   | 44. ATTIC ACCESS HATCH.  | 44. ATTIC ACCESS HATCH.  |
|  |   | 45. MECHANICAL UNIT ON METAL ROOF CURB.  | 45. MECHANICAL UNIT ON METAL ROOF CURB.  |
|  |   | 46. PRE-FINISHED METAL ROOF PANEL OVER STEEL FRAMING.  | 46. PRE-FINISHED METAL ROOF PANEL OVER STEEL FRAMING.  |
|  |   | 47. STEEL COLUMN BEHIND - SHOWN FOR REFERENCE.   | 47. STEEL COLUMN BEHIND - SHOWN FOR REFERENCE.   |
|  |   | 48. ROOF EQUIPMENT VISUAL SCREENING.   | 48. ROOF EQUIPMENT VISUAL SCREENING.   |
|  |   | 49. 5/8" FIRE RATED GYP. BOARD, PAINT.   | 49. 5/8" FIRE RATED GYP. BOARD, PAINT.   |
|  |   | 50. C.M.U. TRASH ENCLOSURE AND GATES PER CITY OF REEDLEY ST-50 AND ST-51. SEE FLOOR PLAN FOR DIMENSIONS.   | 50. C.M.U. TRASH ENCLOSURE AND GATES PER CITY OF REEDLEY ST-50 AND ST-51. SEE FLOOR PLAN FOR DIMENSIONS. |
|  |   | 51. BUILDING SIGNAGE.  | 51. BUILDING SIGNAGE.  |
|  |   | 52. ALUMINUM REVEAL.   | 52. ALUMINUM REVEAL.   |
|  |   | 53. THREE COAT EXTERIOR GRADE HEAVY DUTY PAINT.  | 53. THREE COAT EXTERIOR GRADE HEAVY DUTY PAINT.  |
|  |   | 54. PAINTED METAL FASCIA.  | 54. PAINTED METAL FASCIA.  |
|  |   | 55. METAL BOOK DROP UNIT.  | 55. METAL BOOK DROP UNIT.  |
|  |   | 56. ROOF OVERHANG/ STRUCTURE ABOVE.  | 56. ROOF OVERHANG/ STRUCTURE ABOVE.  |
|  |   | 57. PROPOSED FIRE HYDRANT PER CITY OF REEDLEY.   | 57. PROPOSED FIRE HYDRANT PER CITY OF REEDLEY.   |
|  |   | 58. KNOX-BOX PER CITY OF REEDLEY FIRE DEPARTMENT.  | 58. KNOX-BOX PER CITY OF REEDLEY FIRE DEPARTMENT.  |
|  |   | 59. PAINTED ASPHALT STRIPING.  | 59. PAINTED ASPHALT STRIPING.  |
|  |   | 60. CONCRETE WHEEL STOP.   | 60. CONCRETE WHEEL STOP.   |
|  |   | 61. ACCESSIBLE PARKING STALL.  | 61. ACCESSIBLE PARKING STALL.  |
|  |   | 62. ACCESSIBLE PARKING SIGN.   | 62. ACCESSIBLE PARKING SIGN.   |
|  |   | 63. PRE-MANUFACTURED TRUNCATED DOMES.  | 63. PRE-MANUFACTURED TRUNCATED DOMES.  |
|  |   | 64. (4) BIKE RACKS - (8 BIKES TOTAL)   | 64. (4) BIKE RACKS - (8 BIKES TOTAL)   |
|  |   | 65. CONCRETE DRIVE APPROACH.   | 65. CONCRETE DRIVE APPROACH.   |
|  |   | 66. PROPERTY LINE.   | 66. PROPERTY LINE.   |
|  |   | 67. NOT USED.  | 67. NOT USED.  |
|  |   | 68. LANDSCAPING WITH RIVER ROCK BED.   | 68. LANDSCAPING WITH RIVER ROCK BED.   |
|  |   | 69. SIGN: "NO PUBLIC ENTRANCE"   | 69. SIGN: "NO PUBLIC ENTRANCE"   |
|  |   | 70. NOT USED.  | 70. NOT USED.  |
|  |   | 71. BUILDING REFERENCE POINT.  | 71. BUILDING REFERENCE POINT.  |
|  |   | 72. CASED OPENING.   | 72. CASED OPENING.   |
|  |   | 73. GRADED NATIVE SOIL.  | 73. GRADED NATIVE SOIL.  |
|  |   | 74. TRASH BIN ENCLOSURE CONCRETE APRON PER CITY OF REEDLEY "ST-53"   | 74. TRASH BIN ENCLOSURE CONCRETE APRON PER CITY OF REEDLEY "ST-53"                                       |
|  |   | 75. SIGN: "NO ENTRANCE ONE WAY TRAFFIC"  | 75. SIGN: "NO ENTRANCE ONE WAY TRAFFIC"  |
|  |   | 76. BOLLARD WITH ILLUMINATED FIXTURE.  | 76. BOLLARD WITH ILLUMINATED FIXTURE.  |
|  |   | 77. LAMPPOST AND CONCRETE BASE.  | 77. LAMPPOST AND CONCRETE BASE.  |
|  |   | 78. NOT USED.  | 78. NOT USED.  |
|  |   | 79. NOT USED.  | 79. NOT USED.  |
|  |   | 80. EXISTING CONCRETE WALK.  | 80. EXISTING CONCRETE WALK.  |



**Exhibit C - Site Plan**





**Furniture Notes**

Free-standing library shelving, workstations, tables, and chairs are shown for reference only - not part of the contract, except for the following:

1. Service front desk and rear wall-mounted cabinets.
2. Computer/Print area tabletops.
3. Sorting room tabletops.
4. Staff Lounge lower and upper cabinets.
5. Lactation room lower and upper cabinets.
6. Kitchen lower and upper cabinets.
7. Learning Stations tabletops in the Children Area.

**Legend**

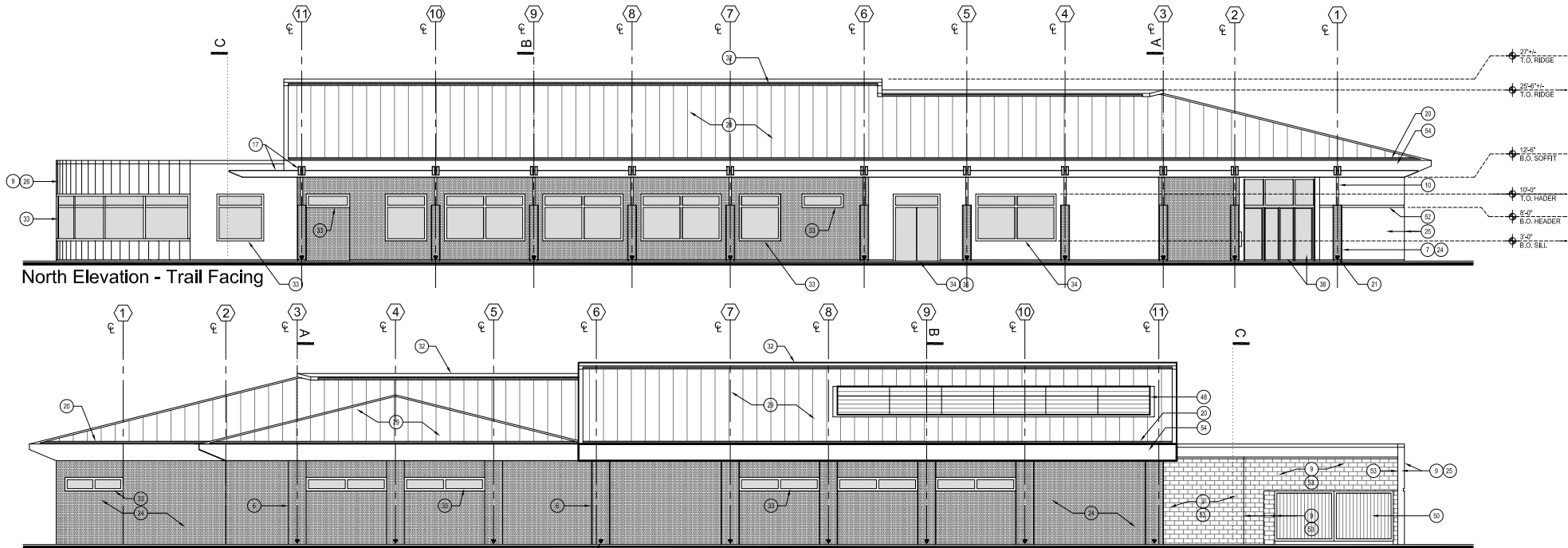
- (C) DIAMOND POLISHED CONCRETE FINISH
- (T) QUERY TILE FLOORING WITH COLORED EPOXY GROUT.
- (GYP. BD) GYP. BOARD CEILING OVER METAL JOIST. PAINT.
- (ACT) SUSPENDED ACOUSTICAL TILE CEILING SYSTEM.
- (P.M.C.) PRE-FINISHED PERFORATED (MAX. HOLE SIZE 1/8" DIA.) METAL SOFFIT PANEL. \*PAC-CLAD ARCHITECTURAL METAL\* OR EQUAL.
- (C.P.S.) 3/4" EXTERIOR CEMENT PLASTER SOFFIT.
- (N.C.) NO CEILING. BARE STRUCTURE.
- [Hatched Box] THIN FACE BRICK ON THICK-SET SYSTEM
- [Dashed Box] PRE-FABRICATED METAL WALL PANEL
- [Diagonal Lines] 8" THICK REINFORCED C.M.U.
- [Stippled Box] CONCRETE WALL/FILASTER



**Exhibit D - Floor Plan**

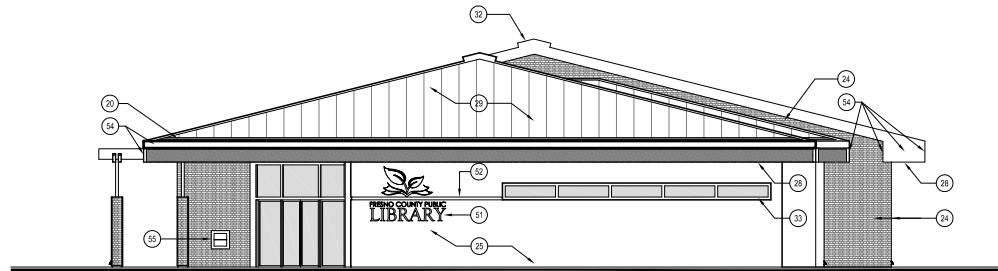
County of Fresno



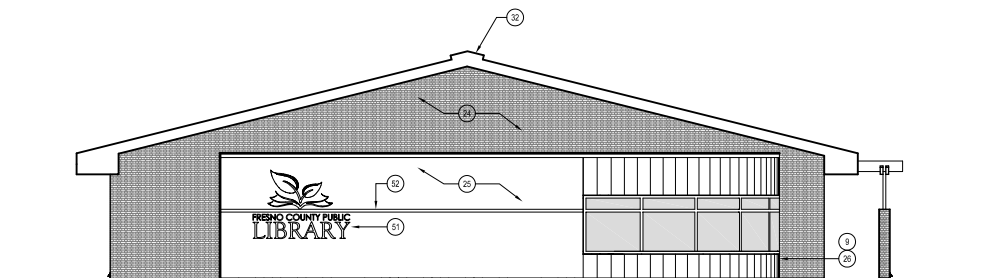


North Elevation - Trail Facing

South Elevation



West Elevation - Main Entrance



East Elevation

Keynotes

SYMBOL ON DRAWINGS

- |   |  |  |
|---|--|--|
| <ol style="list-style-type: none"> <li>1. NATIVE SOIL.</li> <li>2. ENGINEERED FILL.</li> <li>3. CONCRETE FOOTING.</li> <li>4. MOISTURE BARRIER DIRECTLY OVER COMPACTED ENGINEERED FILL.</li> <li>5. CONCRETE SLAB.</li> <li>6. CONCRETE PILASTER.</li> <li>7. CONCRETE POST.</li> <li>8. CONCRETE WALK.</li> <li>9. 8" THICK REINFORCED C.M.U. WALL. FULLY GROUTED.</li> <li>10. TUBE STEEL COLUMN.</li> <li>11. ASPHALT PAVEMENT.</li> <li>12. OPEN WEB STEEL TRUSS.</li> <li>13. STEEL "C" JOIST.</li> <li>14. WIDE FLANGE STEEL BEAM.</li> <li>15. WIDE FLANGE STEEL OUTRIGGER BEAM.</li> <li>16. LIGHT GAUGE METAL FRAMING.</li> <li>17. TUBE STEEL FRAMING. PAINT.</li> <li>18. CONCRETE CURB/ MAINTENANCE STRIP.</li> <li>19. ROOF LEADER.</li> <li>20. ROOF GUTTER SYSTEM WITH S.S. MESH GUTTER GUARD.</li> <li>21. BRASS DOWNSPOUT NOZZLE.</li> <li>22. FOIL FACED FIBERGLASS BATT ATTIC INSULATION.</li> <li>23. ISO BOARD INSULATION.</li> <li>24. THIN FACE BRICK (2 1/4"x7 5/8" X 9 1/16" THK., TYPE "X" WIRE-CUT) SYSTEM OVER SCRATCH COAT OVER METAL LATH OVER DRAINAGE MAT OVER ISO BOARD INSULATION OVER WATER RESISTANT BARRIER. POINTING - CONCAVE WITH TYPE "N" MORTAR.</li> </ol> | <ol style="list-style-type: none"> <li>25. PRE-FINISHED METAL WALL PANEL OVER HAT SHAPED SUB-GIRT OVER Z-GIRT AND ISO BOARD CONTINUOUS INSULATION OVER WATER RESISTANT BARRIER.</li> <li>26. PRE-FINISHED CURVED METAL WALL PANEL OVER HAT SHAPED SUB-GIRT OVER Z-GIRT AND ISO BOARD CONTINUOUS INSULATION OVER WATER RESISTANT BARRIER.</li> <li>27. PRE-FINISHED METAL SOFFIT PANEL, "PAC-CLAD ARCHITECTURAL METAL" OR EQUAL.</li> <li>28. PRE-FINISHED PERFORATED (MAX. HOLE SIZE 1/8" DIA.) METAL SOFFIT PANEL, "PAC-CLAD ARCHITECTURAL METAL" OR EQUAL.</li> <li>29. PRE-FINISHED INSULATED METAL ROOF PANEL OVER "C" PURLIN.</li> <li>30. CORRUGATED METAL ROOF DECKING.</li> <li>31. ASPHALT MODIFIED BITUMINOUS ROOFING OVER 1/2" ROOF BOARD OVER RIGID INSULATION.</li> <li>32. METAL ROOF RIDGE.</li> <li>33. HOLLOW METAL PAINTED WINDOW FRAME WITH DOUBLE PANE GLAZING.</li> <li>34. ANODIZED ALUMINUM STOREFRONT WINDOW SYSTEM.</li> <li>35. HOLLOW METAL DOOR AND FRAME.</li> <li>36. ANODIZED ALUMINUM STOREFRONT DOOR.</li> <li>37. GYP. BOARD CEILING OVER METAL JOIST. PAINT.</li> <li>38. SUSPENDED ACOUSTICAL TILE CEILING SYSTEM.</li> <li>39. DIAMOND POLISHED CONCRETE FINISH.</li> <li>40. QUERY TILE FLOORING WITH COLORED EPOXY GROUT.</li> <li>41. BUILDING OUTLINE BEHIND - SHOWN FOR REFERENCE.</li> <li>42. ROOF ACCESS HATCH.</li> <li>43. ROOFTOP MECHANICAL UNIT CHASE.</li> <li>44. ATTIC ACCESS HATCH.</li> <li>45. MECHANICAL UNIT ON METAL ROOF CURB.</li> <li>46. PRE-FINISHED METAL ROOF PANEL OVER STEEL FRAMING.</li> </ol> | <ol style="list-style-type: none"> <li>47. STEEL COLUMN BEHIND - SHOWN FOR REFERENCE.</li> <li>48. REMOVABLE ROOF EQUIPMENT VISUAL SCREENING.</li> <li>49. 5/8" FIRE RATED GYP. BOARD. PAINT.</li> <li>50. C.M.U. TRASH ENCLOSURE WITH GATES (CORRUGATED METAL SIDING OVER HOLLOW METAL FRAME).</li> <li>51. BUILDING SIGNAGE.</li> <li>52. ALUMINUM REVEAL.</li> <li>53. THREE COAT EXTERIOR GRADE HEAVY DUTY PAINT.</li> <li>54. PAINTED METAL FASCIA.</li> <li>55. METAL BOOK DROP UNIT.</li> <li>56. ROOF OVERHANG/ STRUCTURE ABOVE.</li> <li>57. PROPOSED FIRE HYDRANT PER CITY OF REEDLEY.</li> <li>58. KNOX-BOX PER CITY OF REEDLEY FIRE DEPARTMENT.</li> <li>59. PAINTED ASPHALT STRIPING.</li> <li>60. CONCRETE WHEEL STOP.</li> <li>61. ACCESSIBLE PARKING STALL.</li> <li>62. ACCESSIBLE PARKING SIGN.</li> <li>63. PRE-MANUFACTURED TRUNCATED DOMES.</li> <li>64. (4) BIKE RACKS - (8 BIKES TOTAL)</li> <li>65. CONCRETE DRIVE APPROACH.</li> <li>66. PROPERTY LINE.</li> <li>67. LOT LINE VOLUNTARY MERGER (DATE/ REF. NUMBER)</li> <li>68. LANDSCAPING WITH RIVER ROCK BED.</li> <li>69. NOT USED.</li> <li>70. NEW ARBOR, FOUNTAIN, AND A/C WALK - BY OTHER, NOT PART OF THIS CONTRACT.</li> <li>71. BUILDING REFERENCE POINT.</li> </ol> |
|---|--|--|

# Exhibit E - Exterior Elevations

