

**Plant Site:** 13475 N. Friant Road



**Quarry Site:** 14765 N. Friant Road



## ROCKFIELD MODIFICATION PROJECT

*EIR 7763, Unclassified Conditional Use Permit Application Nos. 3666 And 3667*

### PUBLIC INFORMATION MEETING

*Thursday, January 16, 2025, 6:00 PM—8:00 PM, ZOOM WEBINAR*



## MEETING PURPOSE

---

- Strictly an informational meeting to inform the public of:
  - Where and what the project is being considered,
  - What are the steps for the environmental review of the project,
  - Where the environmental documents (Draft EIR) are available, and
  - How the public can submit comments and provide testimony.
- This meeting is not required by State or local statutes, it is not a public hearing.
- Verbal questions or comments at this meeting are not part of the public record.
- *Una versión de esta presentación en español estará disponible en el sitio web de EIR del Condado.*



# PRESENTATION OUTLINE

---

- Project Overview
- Environmental Review Process
- Environmental Issues of Concern
- Next Steps
- How to Get Information and Participate in the Public Process
- Questions





# PROJECT OVERVIEW



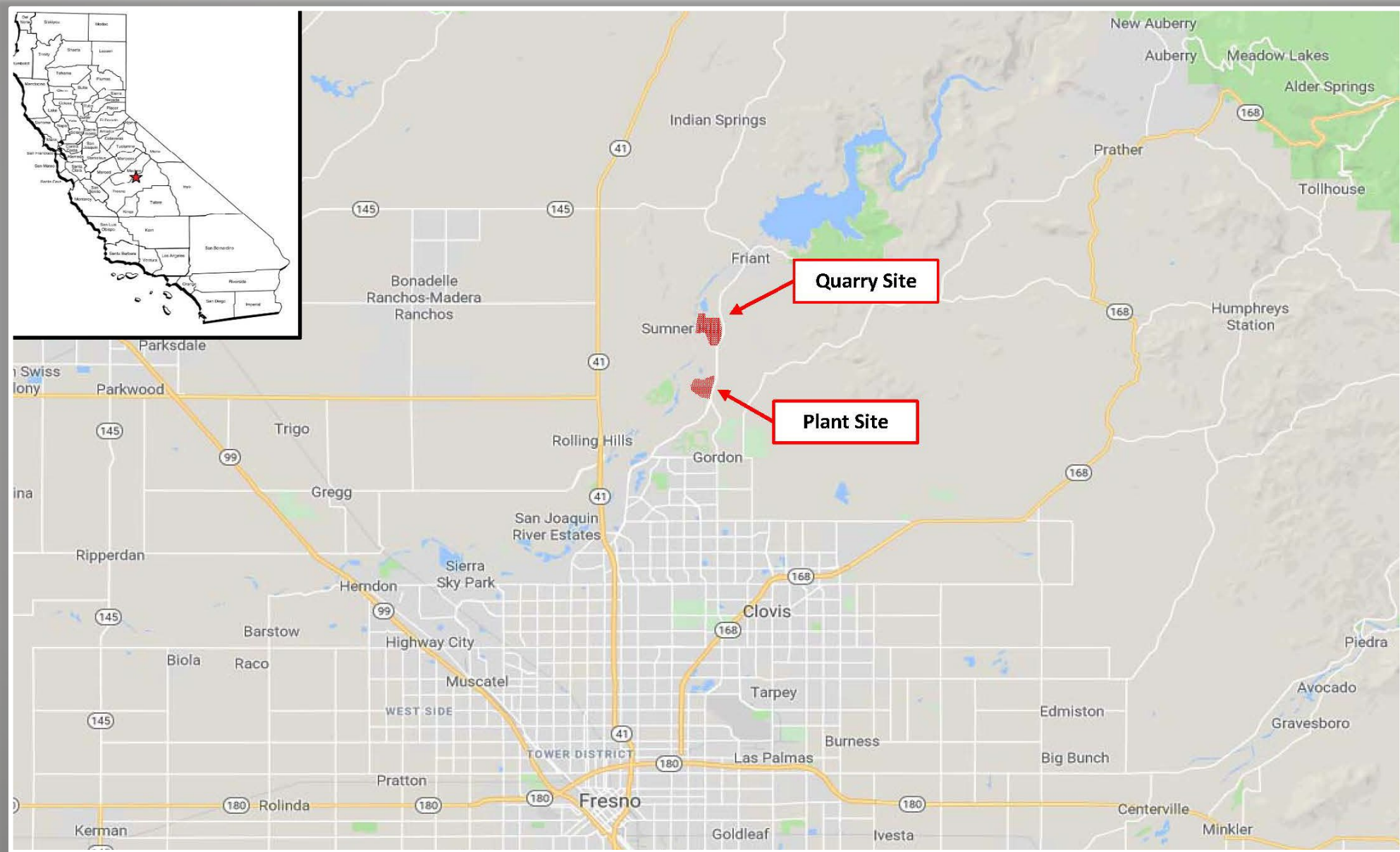
## PROJECT OVERVIEW: PROJECT LOCATION

---

- Two properties: the Plant Site (138.5 acres) and the Quarry Site (352.4 acres)
- North of the City of Fresno, in unincorporated Fresno County
- Between North Friant Road to the east and the San Joaquin River to the west

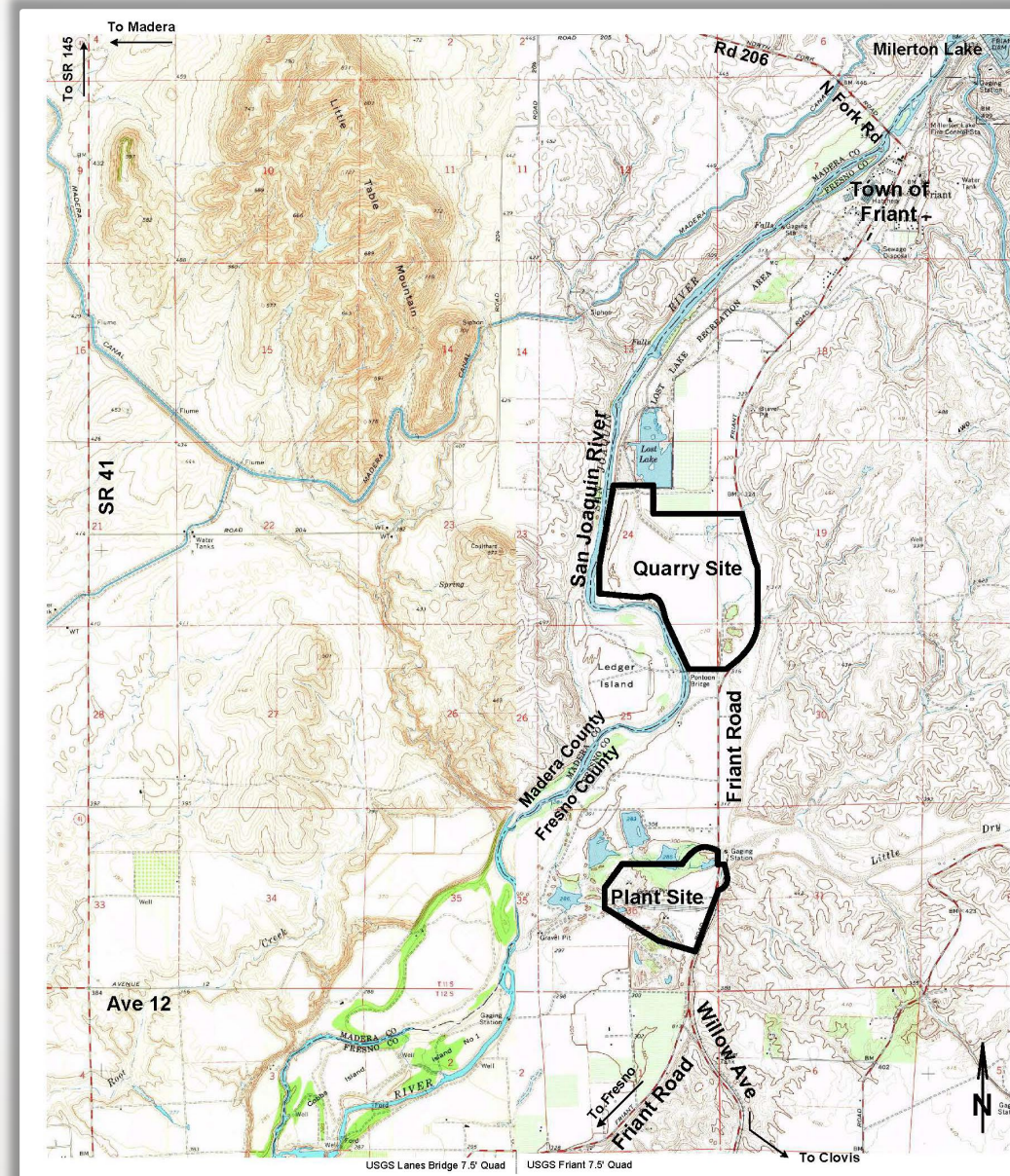


# PROJECT OVERVIEW: REGIONAL LOCATION



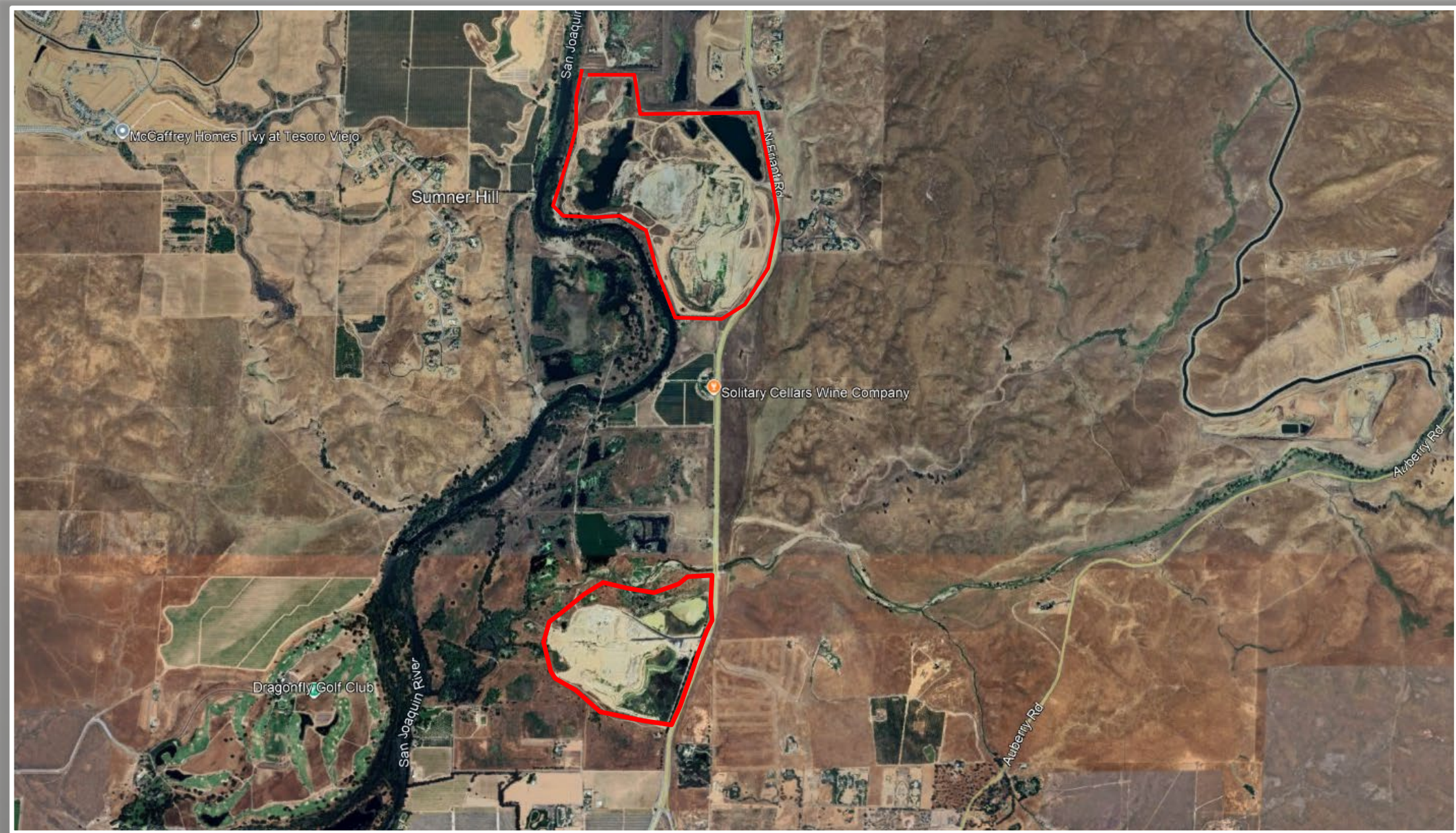


## PROJECT OVERVIEW: PROJECT LOCATION



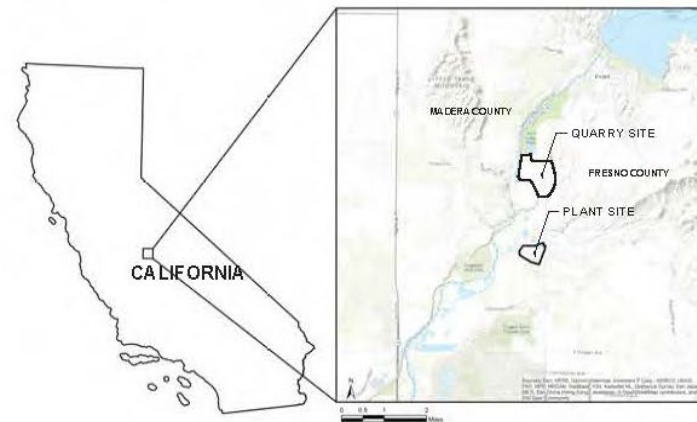


# PROJECT OVERVIEW: PROJECT LOCATION





# PROJECT OVERVIEW: PROJECT AERIAL PHOTOGRAPH



**VICINITY MAP**

## INDEX

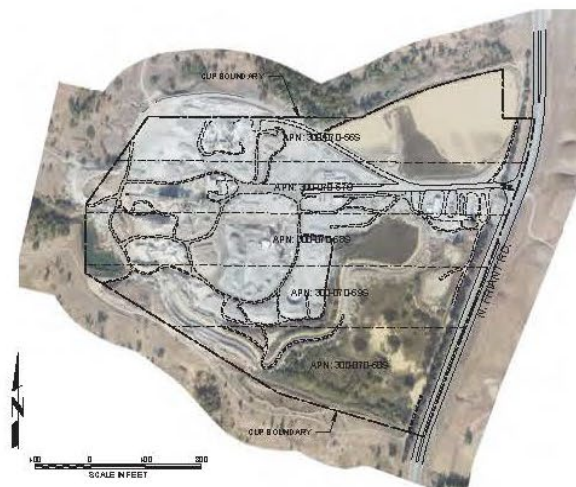
SHEET 1:	VICINITY MAP, PLANT SITE & QUARRY SITE AERIALS
SHEET 2:	PLANT SITE EXISTING CONDITIONS
SHEET 3:	QUARRY SITE EXISTING CONDITIONS
SHEET 4:	PLANT SITE PROJECT SITE PLAN
SHEET 5:	PLANT SITE MINING PLAN
SHEET 6:	QUARRY SITE MINING PLAN
SHEET 7:	PLANT SITE FINAL RECLAIMED CONDITIONS
SHEET 8:	QUARRY SITE FINAL RECLAIMED CONDITIONS

## PLANT SITE INFORMATION

PLANT SITE ADDRESS: 13475 NORTH FRIANT ROAD  
FRESNO, CALIFORNIA 93736  
PROJECT BOUNDARY: 122.1 ACRES

## QUARRY SITE INFORMATION

QUARRY SITE ADDRESS: 14765 NORTH FRIANT ROAD  
FRESNO, CALIFORNIA 93736  
PROJECT BOUNDARY: 349.4 ACRES



**PLANT SITE AERIAL MAP**



## LEGEND

---	EXISTING CUP BOUNDARY
---	ACCESS ROADS
---	INGRESS/EGRESS
---	PROPERTY BOUNDARY

**QUARRY SITE AERIAL MAP**

AERIAL PHOTOGRAPHY BY: AEROTECH MAPPING, INC.  
NOVEMBER 11, 2015  
PARCEL BOUNDARY BY: FRESNO COUNTY PUBLIC WORKS AND  
PLANNING DEPARTMENT GIS PORTAL



## PROJECT OVERVIEW: PROJECT SUMMARY

---

- Continue concurrent operations at both the Plant Site and the Quarry Site
- The Project includes the following two project life stages that are estimated to span 100 years.
  - **Stage 1:** At the Quarry Site, mine deeper and add aggregate processing plant. At the Plant Site, continue ready-mix concrete plant and asphalt plant operations, process aggregate mined from the Plant Site, and reclaim the Plant Site when mining is complete (approximately 30 years).
  - **Stage 2:** Continue hard rock mining and processing operations only at the Quarry Site. The ready-mix concrete plant and the hot-mix asphalt plant would be relocated from the Plant Site to the Quarry Site (for approximately more 70 years following Stage 1, for a total project life of 100 years).





# ENVIRONMENTAL REVIEW PROCESS



## ENVIRONMENTAL REVIEW PROCESS: PROCESS TO DATE

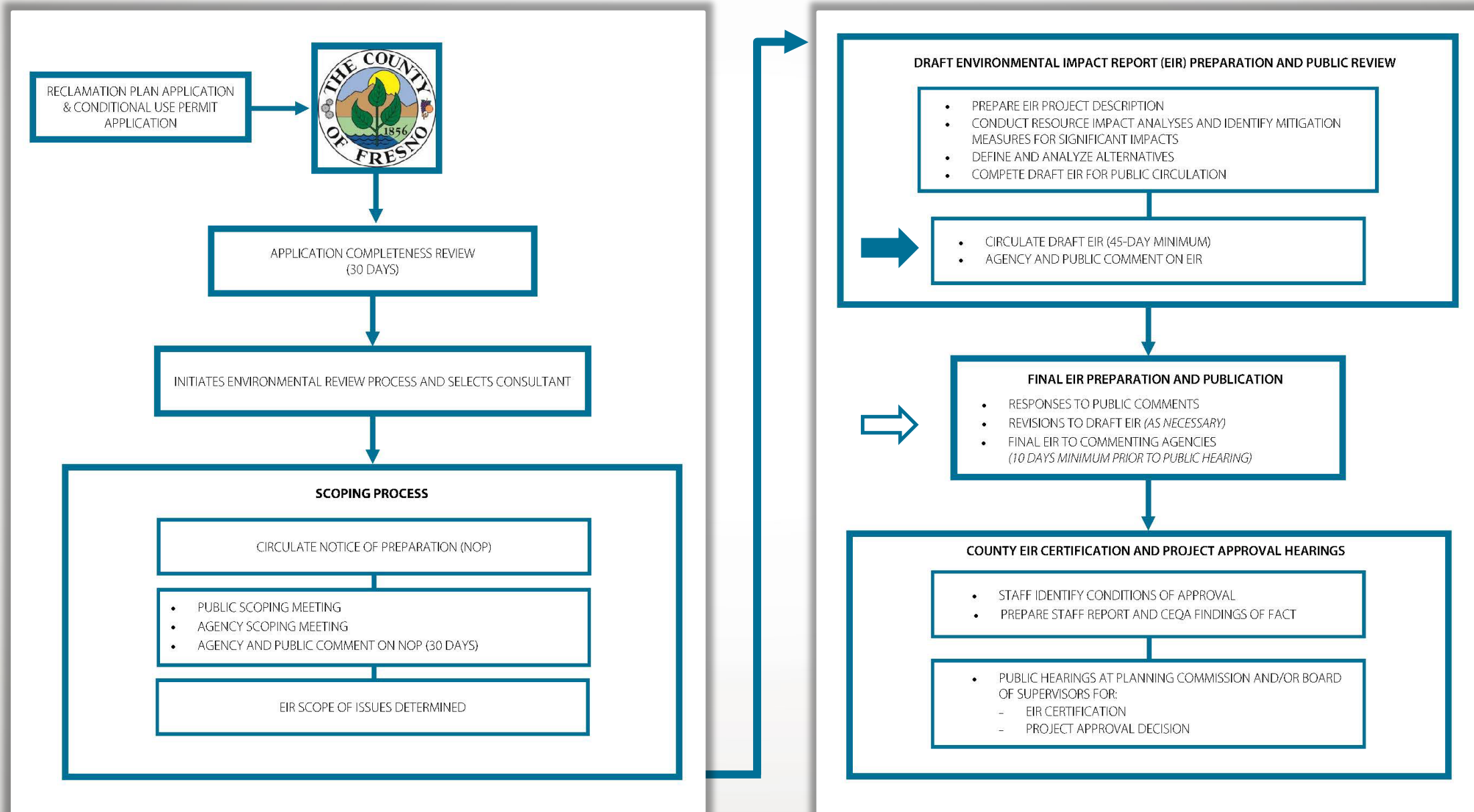
---

- Application Submission – December 2019
- Notice of Preparation of EIR – June 2020
- Agency Scoping Meeting – June 22, 2020
- Public Scoping Meeting – June 24, 2020
- Draft EIR prepared – May 2020 to January 2025
- Draft EIR circulated – January 2, 2025 to February 17, 2025
- Public Information Meeting – January 16, 2025





# ENVIRONMENTAL REVIEW PROCESS: CEQA PROCESS FLOWCHART



Caption: CEQA Flow Chart. Source: Prepared by Benchmark Resources in 2020.

Note: Pursuant to CEQA Guidelines Section 15060(d), the County did not prepare an Initial Study before beginning work on the EIR.



# ENVIRONMENTAL ISSUES OF CONCERN





# ENVIRONMENTAL ISSUES OF CONCERN: SIGNIFICANT AND UNAVOIDABLE IMPACTS

---

- Aesthetics and Visual Resources (Impacts 4.1-1 and 4.1-3):
  - The project would have a substantial adverse effect on a scenic vista and would substantially degrade the existing visual character or quality of public views of the project sites from two locations. Mitigation would require the exposed rock of the quarry pit wall to be stained to reduce contrast and visibility.
- Transportation (Impact 4.17-1):
  - The project would cause traffic delays at two intersections. Mitigation would require various roadway and intersection improvements in the project area. The project cannot be fully mitigated due to the availability of funding for necessary improvements.



# ENVIRONMENTAL ISSUES OF CONCERN:

## OTHER CONTROVERSIAL IMPACTS THAT CAN BE MITIGATED

---

- Biological Resources (Impact 4.4-1):
  - The project could adversely affect special-status wildlife species including burrowing owl, western pond turtle, western spadefoot toad, and nesting birds directly or through habitat modification. Mitigation measures would require pre-construction surveys, avoidance measures, and monitoring to minimize impacts to these species.
- Geology and Soils (Impacts 4.7-6 and 4.7-7):
  - The project would create slopes at both sites that could become unstable. Mitigation measures would require monitoring and additional analyses during mining operations to ensure slope stability.





# ENVIRONMENTAL ISSUES OF CONCERN:

## OTHER CONTROVERSIAL IMPACTS THAT CAN BE MITIGATED (CONTINUED)

- Hydrology and Water Quality (Impacts 4.10-5 and 4.10-10):
  - The project could degrade surface and groundwater quality during operations at both sites and could decrease groundwater supplies potentially interfering with existing groundwater wells. Mitigation measures would require implementation of Blasting Protocols to ensure proper use and storage of explosive materials and implementation of adaptive management programs at both sites to monitor groundwater levels and adjust or even halt operations to avoid significant impacts to wells.
- Noise (Impact 4.13-2):
  - The project would generate substantial noise and groundborne vibration at both sites during mining operations. Mitigation measures would require implementation of noise reduction measures for proposed equipment and Blasting Protocols to ensure proper use of explosive materials.



# NEXT STEPS





## NEXT STEPS

---

- Following the public review process ending in February, a Final EIR will be prepared and made available at the County's offices. The Final EIR will reflect comments received on the Draft EIR.
- The following steps will be pursued by Fresno County:
  - **Public Comment on Draft EIR:** January 2, 2025, through February 17, 2025.
  - Preparation of the Final EIR.
  - Preparation of Staff Report, Mitigation Monitoring and Report Program, and CEQA Findings.
  - Public Hearings and County decision on the project.
- The actual timing will be dependent upon events and evaluations as they proceed.



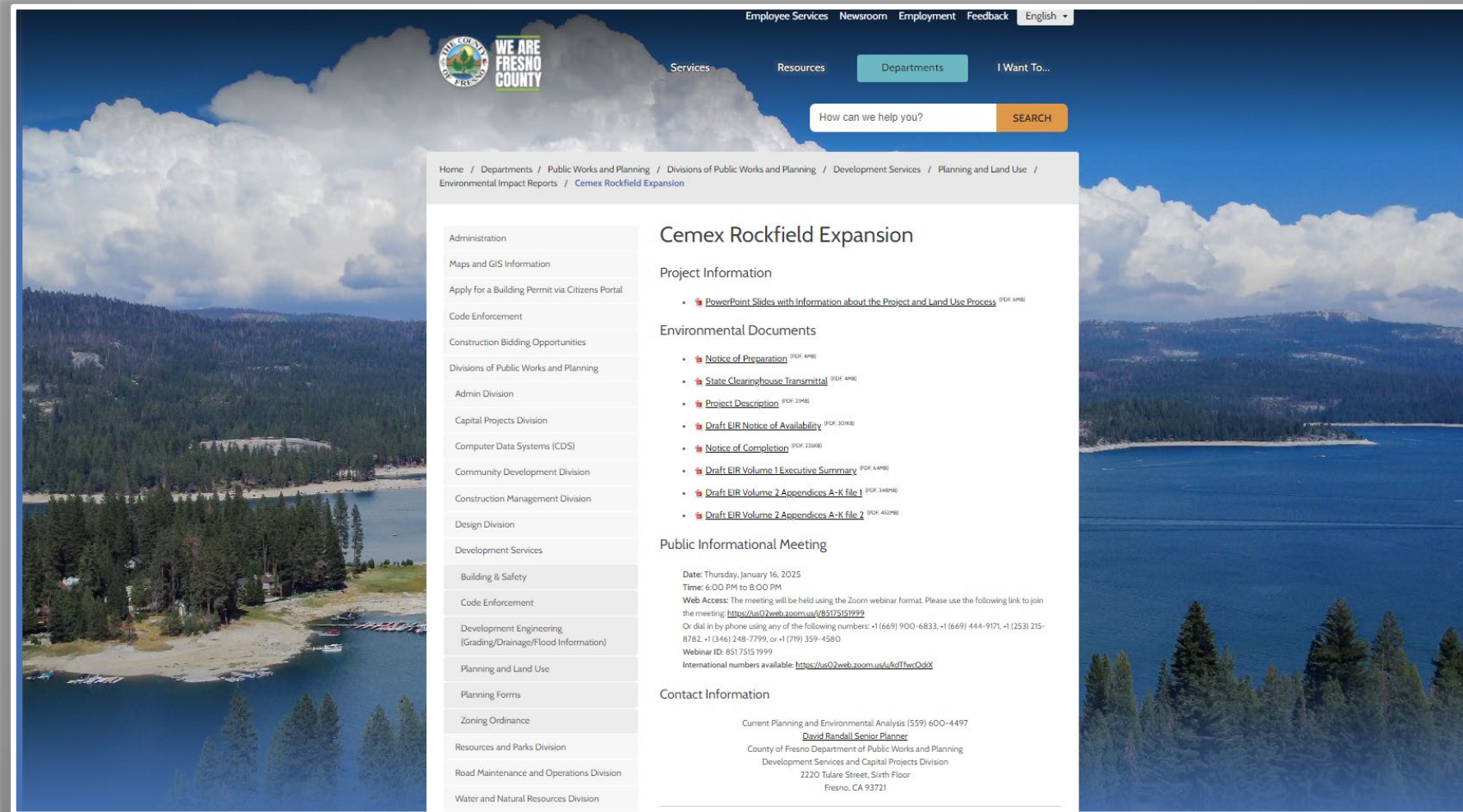
# **HOW TO GET INFORMATION AND PARTICIPATE IN THE PUBLIC PROCESS**







# DRAFT EIR IS AVAILABLE ONLINE VIA THE COUNTY WEBSITE


- County Website: <https://www.fresnocountyca.gov/Home>  
(search) **CEMEX Rockfield Expansion**



# DRAFT EIR IS AVAILABLE ON STATE WEBSITE

- State Website: <https://ceqanet.opr.ca.gov/Project/2020060123>






Recent Postings

About

Contact Us

Search

Advanced Search

Contact Us  Settings

[Home](#) | [Search](#) | SCH Number 2020060123

SCH Number 2020060123

Project Info

**Title**

CEMEX Rockfield Quarry Modification Project - Environmental Impact Report No. 7763 and Unclassified Conditional Use Permit Application Nos. 3666 and 3667

**Description**

CEMEX Construction Materials Pacific LLC (the "Applicant") has applied to the County of Fresno Department of Public Works and Planning (County) for two Unclassified Conditional Use Permits (CUP Application Nos. 3666 and 3667) to allow the Rockfield Quarry a continuation and modification of its current aggregate (rock, sand, and gravel) mining and processing operations. The project is generally located at two separate sites approximately two miles apart, The first, the Plant Site, is located on the west side of North Friant Road between North Willow Avenue and Little Dry Creek, and the second, the Quarry Site, is located on the west side of North Friant Road between Bluff View Avenue and Lost Lake Road. The County is the lead agency for preparation of the Environmental Impact Report (EIR No. 7763) for this project and is issuing this Notice of Preparation pursuant to Section 15082 of the CEQA Guidelines. The Applicant is requesting a continuation and modification of its current aggregate (rock, sand, and gravel) mining and processing operations. The Project includes the following two project life stages that are estimated to span 100 years.

Download CSV

New Search

2 documents in project

Type	Lead/Public Agency	Received	Title
------	--------------------	----------	-------





## PRINTED DRAFT EIR IS AVAILABLE IN LIBRARIES & COUNTY OFFICE

---

- **Fresno County Libraries:**
  - Fresno County Main Public Library  
2420 Mariposa St,  
Fresno, CA 93721
  - Woodward Park Regional Public Library  
944 E Perrin Ave,  
Fresno, CA 93720
- **Fresno County Planning**  
2220 Tulare Street Suite B, (Garden Plaza Level)  
Fresno, CA 93720



## TO STAY INFORMED

---

- The existing Draft EIR and the future Final EIR will be posted on EIR Web Page.
- To receive future public notices Via mail, provide your Name and Address to:

David Randall at [DRandall@FresnoCountyCA.gov](mailto:DRandall@FresnoCountyCA.gov) or  
2220 Tulare Street, 6th Floor, Fresno CA 93721

- A minimum of 10 days prior to the Public Hearing before the Planning Commission to consider the Environmental Document and Conditional Use Permits, a notice of the hearing will be sent to everyone on the mailing list.
- When the Staff Report for the Planning Commission Hearing available, it will be posted on the County's Planning Commission website.



# QUESTIONS OF COUNTY STAFF

---



**David Randall** | **Senior Planner**

**Department of Public Works and Planning |  
Development Services and Capital Projects Division**

2220 Tulare St. 6th Floor Fresno, CA 93721

Main Office: (559) 600-4497 Direct: (559) 600-4052

[Your input matters! Customer Service Survey](#)

**DRandall@FresnoCountyCA.gov**





## HOW TO PARTICIPATE IN WRITING

---

- **Mail** Comments on Draft EIR to:
  - David Randall  
2220 Tulare St., 6th Floor  
Fresno CA, 93721
- **E-mail** Comments on Draft EIR:
  - To: [tmtunga@FresnoCountyCa.gov](mailto:tmtunga@FresnoCountyCa.gov)  
Subject: CEMEX Rockfield Quarry Modification Project EIR



## HOW TO PROVIDE VERBAL TESTIMONY

---

- Verbal testimony can only be presented in person at the Planning Commission Public Hearing.
- The Public Hearing can be viewed via the internet, but no testimony can be provided online.



# QUESTIONS





## QUESTIONS: GUIDELINES FOR THIS MEETING

---

- As this is only an informational meeting, we are glad to answer questions regarding:
  - How the process works,
  - How to obtain information on the project, and
  - How to comment or participate in the process.
- We will not be:
  - Discussing the merits or information within the Draft EIR, or
  - Taking any testimony or comments for the public record.



# ROCKFIELD MODIFICATION PROJECT

*EIR 7763, Unclassified Conditional Use Permit Application Nos. 3666 And 3667*

---

## PUBLIC INFORMATION MEETING IN PROGRESS UNTIL 9:00 PM

**THE PRESENTATION HAS CONCLUDED**

**YOU MAY ASK RELEVANT QUESTIONS AT THIS TIME**

- As this is only an informational meeting, we are glad to answer questions regarding:
  - How the process works,
  - How to obtain information on the project, and
  - How to comment or participate in the process.
- We will not be:
  - Discussing the merits or information within the Draft EIR, or
  - Taking any testimony or comments for the public record.

