



Exhibit A - Rendering

County of Fresno





Exhibit B - Rendering

County of Fresno





Exhibit C - Rendering



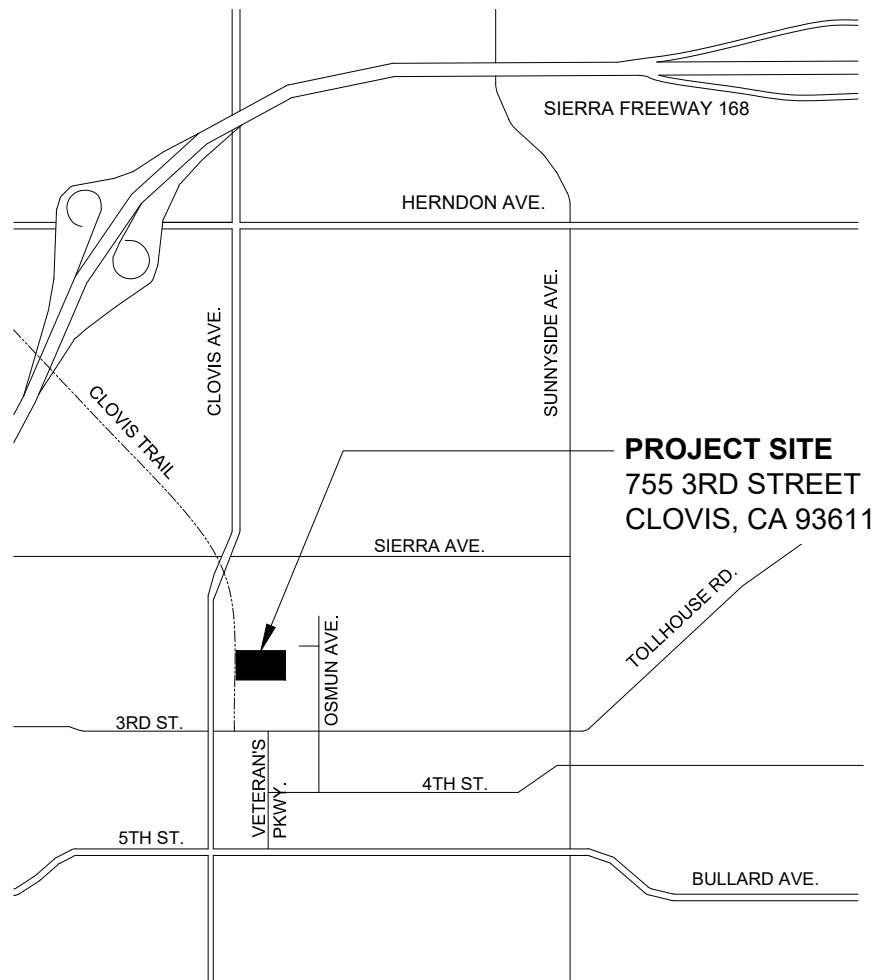


Exhibit D - Vicinity Map

County of Fresno



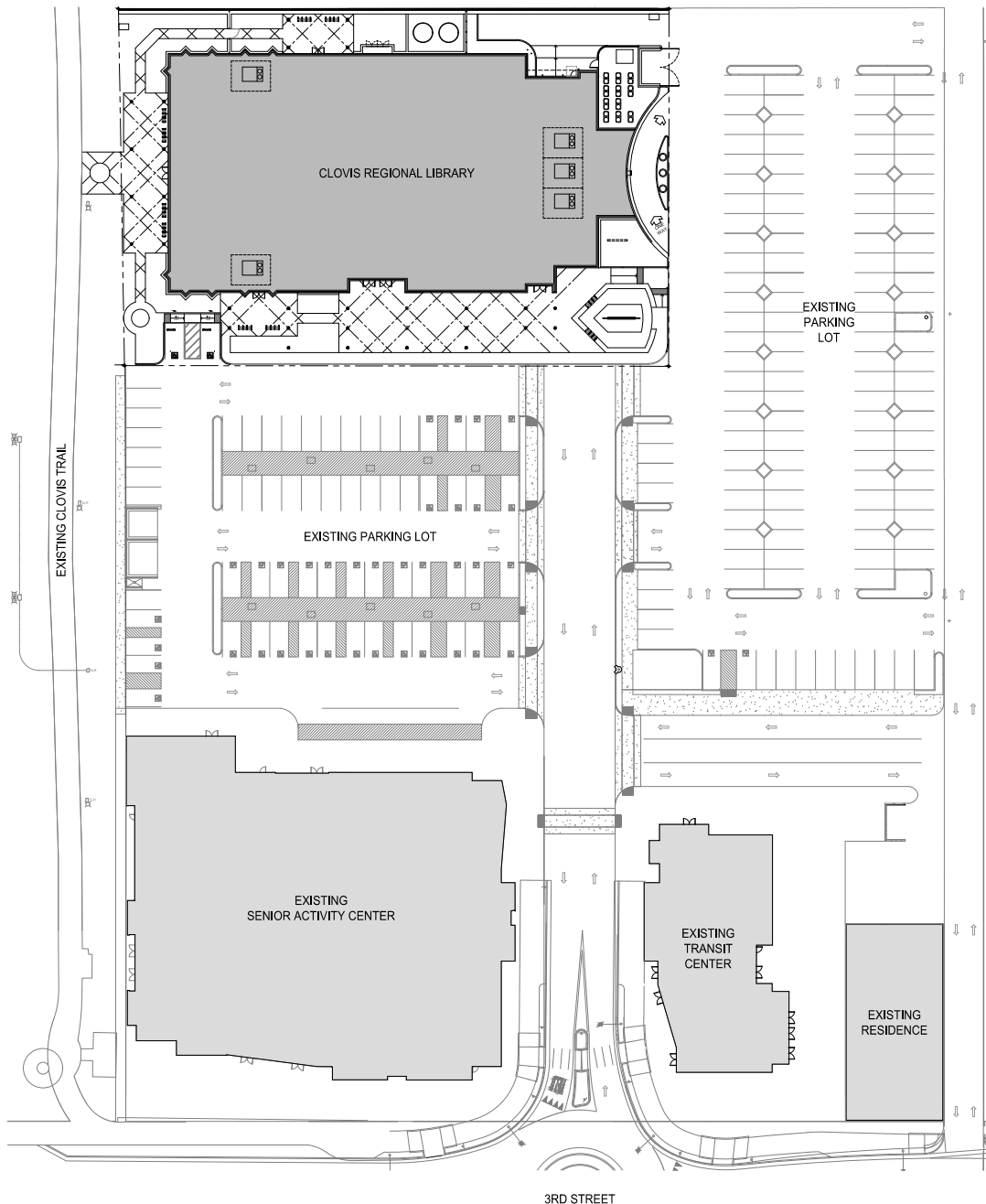
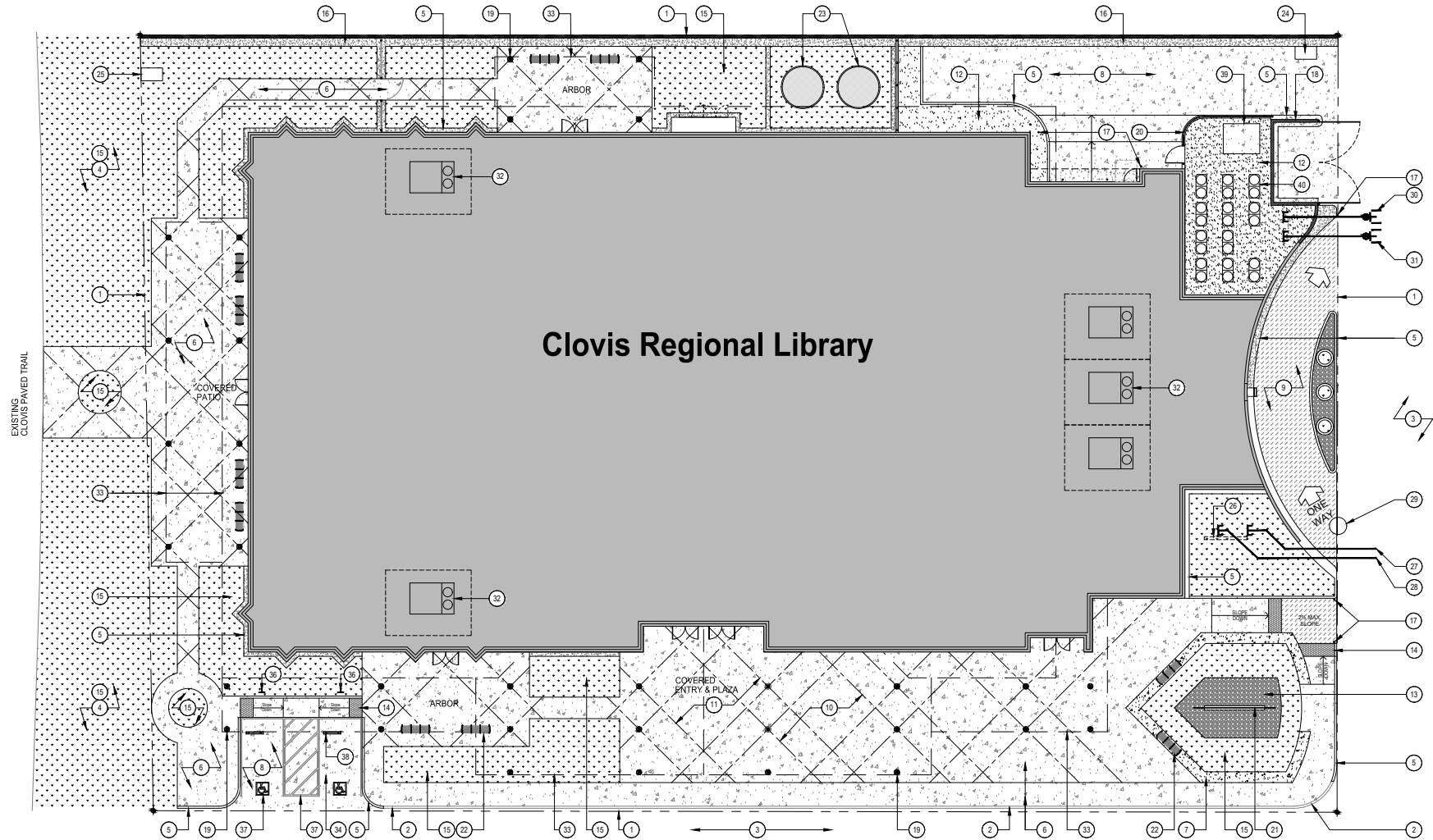


Exhibit E - Overall Site Plan

County of Fresno





Keynotes SYMBOL ON DRAWINGS #

- | | | | |
|---|--|--|--|
| <p>1. PROPERTY LINES FOR SCOPE OF WORK.</p> <p>2. EXISTING CONCRETE CURB.</p> <p>3. EXISTING ASPHALT CONCRETE PARKING LOT.</p> <p>4. EXISTING LANDSCAPE AREA AND TREES.</p> <p>5. CONCRETE CURB.</p> <p>6. CONCRETE WALK.</p> <p>7. STAMPED STAINED CONCRETE WALK.</p> <p>8. CONCRETE DRIVE.</p> <p>9. ASPHALT CONCRETE DRIVE.</p> <p>10. CONCRETE CONTROL JOINT.</p> <p>11. CONCRETE EXPANSION / CONSTRUCTION JOINT.</p> <p>12. GRADED DECOMPOSED GRANITE.</p> | <p>13. RIVER ROCK CEMENTED INTO PLACE AND CLEANED.</p> <p>14. PRE-MANUFACTURED TRUNCATED DOMES.</p> <p>15. DRAUGHT RESISTANT GROUND COVER AND TREES.</p> <p>16. CONCRETE MAINTENANCE STRIP OVER STORM DRAIN.</p> <p>17. ILLUMINATED BOLLARD.</p> <p>18. CONCRETE TRASH ENCLOSURE (TYPE III) AND GATES PER CITY OF CLOVIS STANDARD M-2 AND M-3</p> <p>19. STRUCTURAL COLUMN COVERED IN METAL TUBING. SEE EXTERIOR ELEVATIONS AND SECTIONS.</p> <p>20. WROUGHT IRON FENCE, POST, AND GATE.</p> <p>21. MONUMENT SIGN.</p> | <p>22. BENCH, 21" x 80" x 23" ALL ARMS (STRATA BEAM BENCH BY LANDSCAPE FORMS OR SIMILAR)</p> <p>23. GARDENING PIT IN 10'-0" DIA. PRE-MANUFACTURED REINFORCED CONCRETE PIPE.</p> <p>24. 3' x 5' TRAFFIC RATED PULL BOX (TYPE H20) PER ATNT STANDARD.</p> <p>25. PULL BOX PER CITY OF CLOVIS STANDARD ITS-4, CHRISTY #48T.</p> <p>26. CONCRETE SCREEN WALL.</p> <p>27. 2" WATER SERVICE CONNECTION.</p> <p>28. 2" WATER SERVICE CONNECTION FOR LANDSCAPE SERVICE.</p> <p>29. 48" DIA. SEWER MANHOLE PER CITY OF CLOVIS STANDARD S-2 AND S-5.</p> | <p>30. 8" WATER CONNECTION FOR FIRE SERVICE.</p> <p>31. 6" WATER CONNECTION FOR FIRE HYDRANT.</p> <p>32. PACKAGED ROOF TOP MECHANICAL UNIT.</p> <p>33. ROOF OVERHANG.</p> <p>34. ACCESSIBLE PARKING STALL.</p> <p>35. VAN ACCESSIBLE PARKING STALL.</p> <p>36. ACCESSIBLE PARKING SIGN.</p> <p>37. ACCESSIBLE STALL MARKING/ISLE STRIPING.</p> <p>38. WHEEL STOP.</p> <p>39. TRANSFORMER PAD.</p> <p>40. PACKAGED MECHANICAL UNIT.</p> <p>41. GRADED DECOMPOSED GRANITE.</p> |
|---|--|--|--|

Legend

- | | | | |
|-----|--|--|--|
| --- | CONCRETE CONTROL JOINT | | GRADED D.G. |
| --- | CONCRETE EXPANSION/CONSTRUCTION JOINT | | RIVER ROCK CEMENTED INTO PLACE AND CLEANED |
| | CONCRETE WALK / DRIVE | | ASPHALT CONCRETE SURFACE. |
| | <ul style="list-style-type: none"> • WHEEL CHAIR LANDING: 2% MAX. SLOPE AT ANY DIRECTIONS • WALK: 5% MAX. SLOPE AT THE DIRECTION OF TRAVEL WITH 2% MAX. CROSS SLOPE. | | PRE-MANUFACTURED TRUNCATED DOMES. |
| | STAINED CONCRETE WALK - 2% MAX. SLOPE AT ANY DIRECTIONS | | |
| | DRAUGHT RESISTANT GROUND COVER AND TREES. | | |

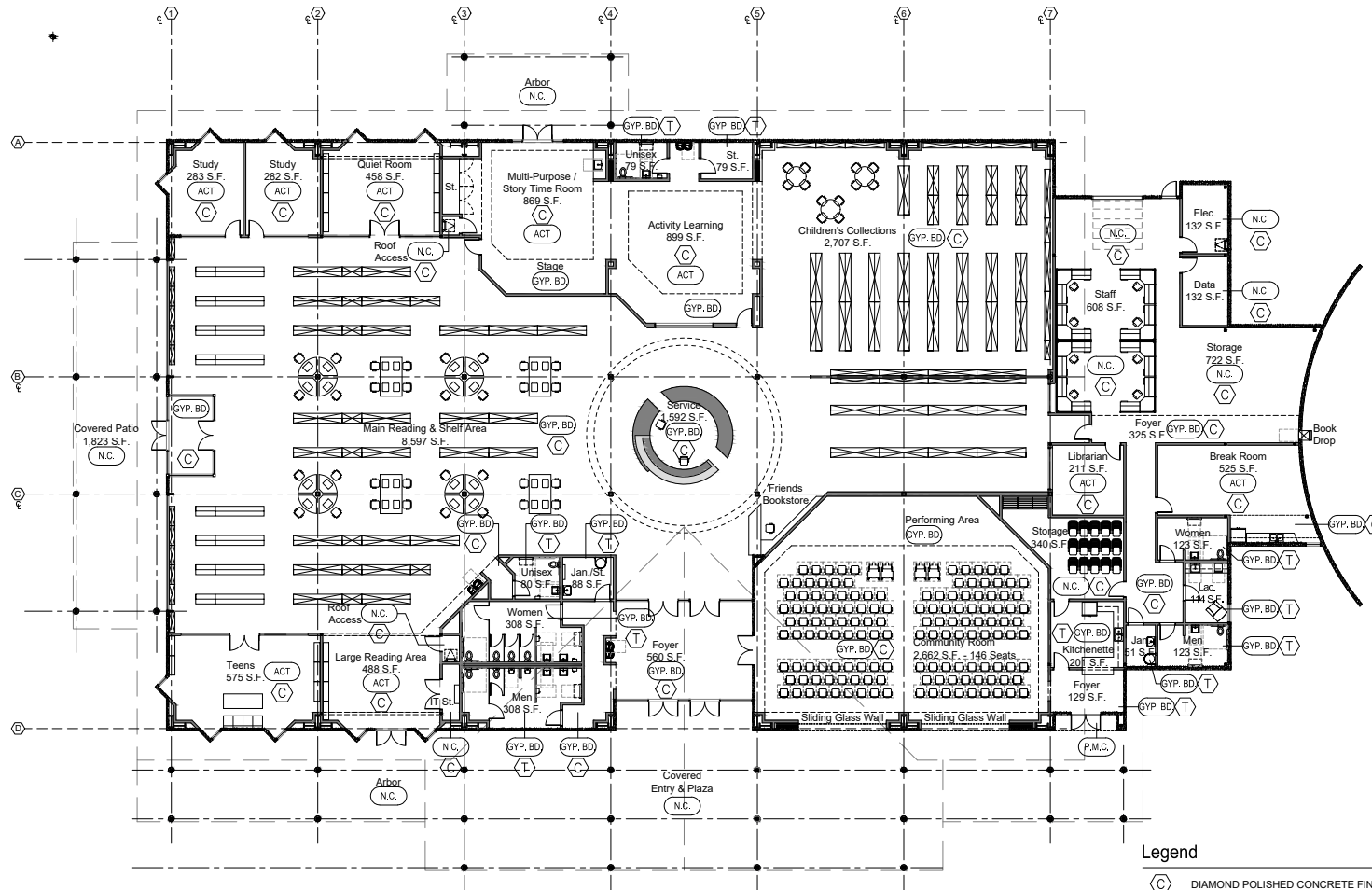


North

Exhibit F - Enlarged Noted Site Plan

County of Fresno





- Legend**
- (C) DIAMOND POLISHED CONCRETE FINISH
 - (T) QUARRY TILE FLOORING WITH COLORED EPOXY GROUT
 - (GYP. BD) GYP. BOARD CEILING OVER METAL JOIST, PAINT
 - (ACT) SUSPENDED ACOUSTICAL TILE CEILING SYSTEM
 - (F.M.C.) PRE-FINISHED PERFORATED (MAX. HOLE SIZE 1/8" DIA.) METAL SOFFIT PANEL. *PAC-CLAD ARCHITECTURAL METAL* OR EQUAL
 - (C.P.S.) 3/4" EXTERIOR CEMENT PLASTER SOFFIT
 - (N.C.) NO CEILING. BARE STRUCTURE

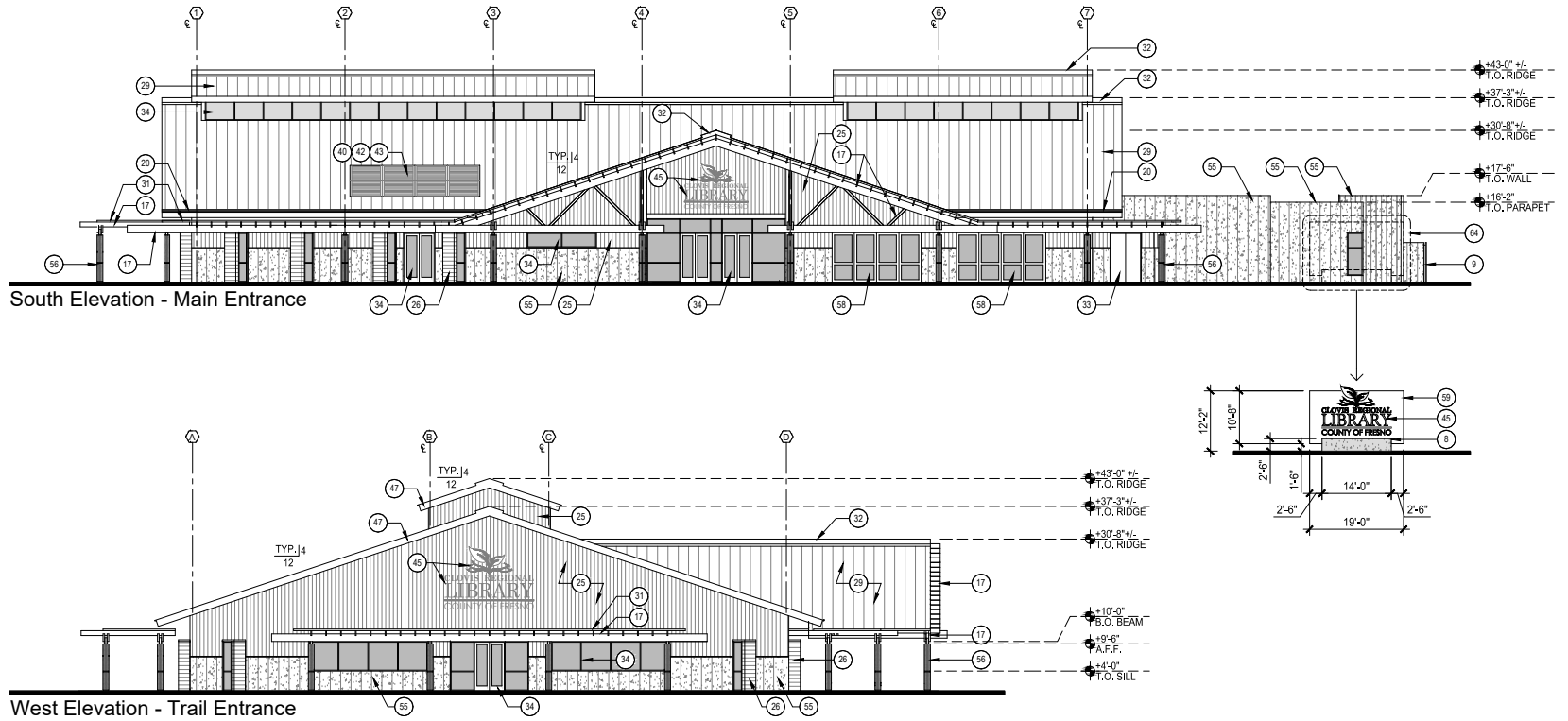


North

Exhibit G - Finish Floor Plan

County of Fresno





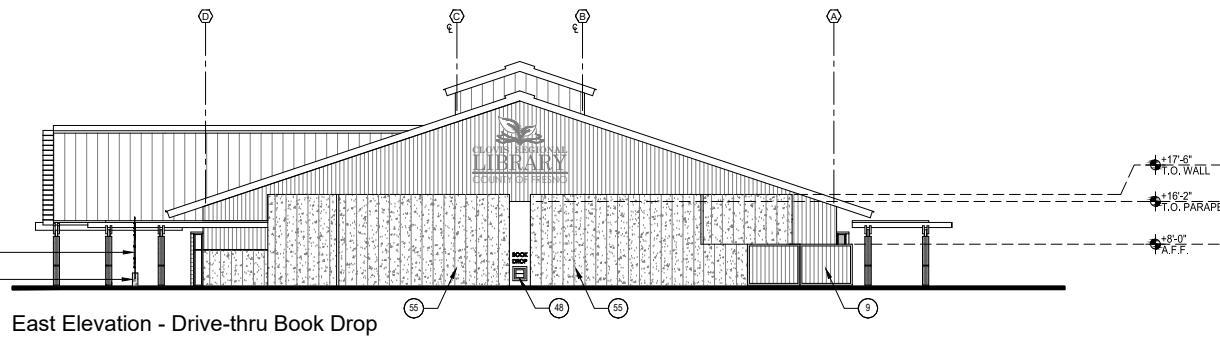
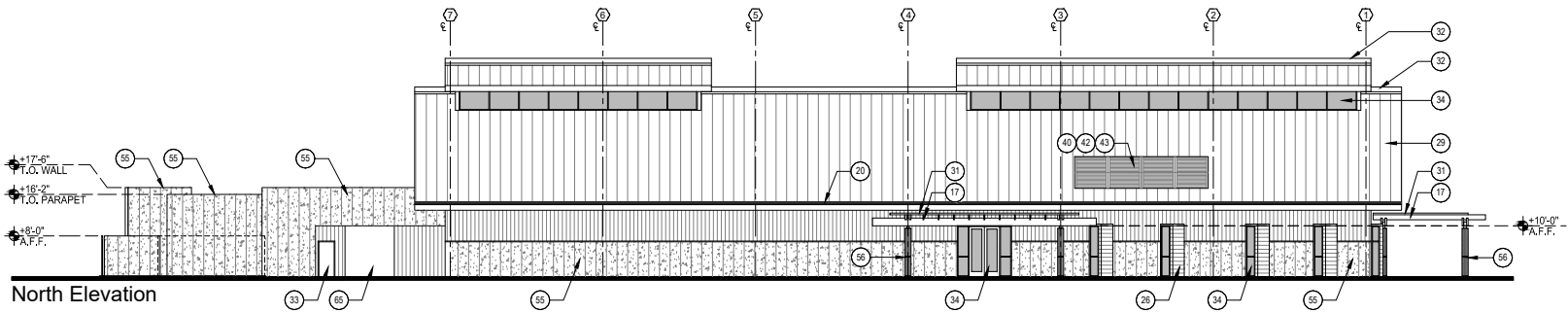
Keynotes SYMBOL ON DRAWINGS ④

- | | | | | |
|--|---|---|---|---|
| 1. PROPERTY LINE. | 15. WIDE FLANGE STEEL BEAM. | 27. FIBER CEMENT SOFFIT PANEL. | 40. ROOFTOP MECHANICAL UNIT CHASE. | 54. RIVER ROCK BED. CEMENTED ONTO CONCRETE AND CLEANED. |
| 2. NATIVE SOIL. | 16. LIGHT GAUGE METAL FRAMING. | 28. PRE-ENGINEERED METAL BUILDING STRUCTURE. | 41. ATTIC ACCESS HATCH. | 55. CAST IN PLACE REINFORCED STAMPED AND STAINED CONCRETE WALL. |
| 3. ENGINEERED FILL. | 17. TUBE STEEL FRAMING. PAINT. | 29. PRE-FINISHED INSULATED METAL ROOF PANEL OVER "C" PURLIN OVER ROOF STRUCTURE. | 42. MECHANICAL UNIT ON METAL ROOF CURB. | 56. STEEL COLUMN IN PAINTED STEEL TUBING. |
| 4. CONCRETE FOOTING. | 18. CONCRETE CURB/ MAINTENANCE STRIP. | 30. ASPHALT MODIFIED BITUMINOUS ROOFING OVER 1/2" ROOF BOARD OVER RIGID INSULATION. | 43. REMOVABLE ROOF EQUIPMENT VISUAL SCREENING. | 57. BENCH. REFER TO ENLARGED NOTED SITE PLAN. |
| 5. MOISTURE BARRIER DIRECTLY OVER COMPACTED ENGINEERED FILL. | 19. ROOF LEADER. | 31. NOT USED. | 44. 5/8" FIRE RATED GYP. BOARD. PAINT. | 58. ANODIZED ALUMINUM SLIDING GLASS WALL SYSTEM. |
| 6. CONCRETE SLAB. | 20. ROOF GUTTER SYSTEM WITH S.S. MESH GUTTER GUARD. | 32. METAL ROOF RIDGE. | 45. BUILDING SIGNAGE. | 59. POWDER COATED PAINTED METAL BASE PLATE FOR SIGNAGE. |
| 7. CONCRETE WALK. | 21. BRASS DOWNSPOUT NOZZLE. | 33. HOLLOW METAL PAINTED DOOR AND FRAME. | 46. THREE COAT EXTERIOR GRADE HEAVY DUTY PAINT. | 60. BUILDING LINE BELOW. |
| 8. CONCRETE BASE. | 22. SERVICE DESK. | 34. ANODIZED ALUMINUM STOREFRONT DOOR/ WINDOW SYSTEM. | 47. PAINTED METAL FASCIA. | 61. ACOUSTIC PANEL FINISH. |
| 9. CONCRETE TRASH ENCLOSURE (TYPE III) AND GATES PER CITY OF CLOVIS STANDARD M-2 AND M-3 | 23. BOOK CASE. | 35. GYP. BOARD CEILING OVER METAL JOIST/ FRAMING. PAINT. | 48. METAL BOOK DROP UNIT. | 62. RADIUS ACUSTIC WALL PANEL AT CORNER. |
| 10. NOT USED. | 24. NOT USED. | 36. SUSPENDED ACOUSTICAL TILE CEILING SYSTEM. | 49. KNOX-BOX PER CITY OF CLOVIS FIRE DEPARTMENT. | 63. SLIDING BARN DOOR SYSTEM. |
| 11. CONCRETE PAVEMENT. | 25. FIBER CEMENT SIDING SYSTEM (SEAMS-VERTICAL) OVER WATER RESISTANT BARRIER OVER SHEATHING OVER METAL STUD WALL. | 37. DIAMOND POLISHED CONCRETE FINISH. | 50. PRE-MANUFACTURED TRUNCATED DOMES. | 64. MONUMENTAL SIGN. SHOWN DASHED FOR CLARITY. |
| 12. ASPHALT CONCRETE DRIVE. | 26. FIBER CEMENT SIDING SYSTEM (SEAMS-HORIZONTAL) OVER WATER RESISTANT BARRIER OVER SHEATHING OVER METAL STUD WALL. | 38. QUERY TILE FLOORING WITH COLORED EPOXY GROUT. | 51. BIKE RACKS. | 65. STEEL ROLL-UP DOOR. |
| 13. OPEN WEB STEEL TRUSS. | | 39. ROOF ACCESS HATCH. | 52. LANDSCAPING WITH DECOMPOSED GRANITE AND RIVER ROCK BED. | |
| 14. STEEL "C" JOIST. | | | 53. BUILDING REFERENCE POINT. | |

Exhibit H - Exterior Elevations

County of Fresno





Keynotes SYMBOL ON DRAWINGS (4)

- | | | | | |
|--|---|---|---|---|
| 1. PROPERTY LINE. | 15. WIDE FLANGE STEEL BEAM. | 27. FIBER CEMENT SOFFIT PANEL. | 40. ROOFTOP MECHANICAL UNIT CHASE. | 54. RIVER ROCK BED. CEMENTED ONTO CONCRETE AND CLEANED. |
| 2. NATIVE SOIL. | 16. LIGHT GAUGE METAL FRAMING. | 28. PRE-ENGINEERED METAL BUILDING STRUCTURE. | 41. ATTIC ACCESS HATCH. | 55. CAST IN PLACE REINFORCED STAMPED AND STAINED CONCRETE WALL. |
| 3. ENGINEERED FILL. | 17. TUBE STEEL FRAMING. PAINT. | 29. PRE-FINISHED INSULATED METAL ROOF PANEL OVER "C" PURLIN OVER ROOF STRUCTURE. | 42. MECHANICAL UNIT ON METAL ROOF CURB. | 56. STEEL COLUMN IN PAINTED STEEL TUBING. |
| 4. CONCRETE FOOTING. | 18. CONCRETE CURB/ MAINTENANCE STRIP. | 30. ASPHALT MODIFIED BITUMINOUS ROOFING OVER 1/2" ROOF BOARD OVER RIGID INSULATION. | 43. REMOVABLE ROOF EQUIPMENT VISUAL SCREENING. | 57. BENCH. REFER TO ENLARGED NOTED SITE PLAN. |
| 5. MOISTURE BARRIER DIRECTLY OVER COMPACTED ENGINEERED FILL. | 19. ROOF LEADER. | 31. NOT USED. | 44. 5/8" FIRE RATED GYP. BOARD. PAINT. | 58. ANODIZED ALUMINUM SLIDING GLASS WALL SYSTEM. |
| 6. CONCRETE SLAB. | 20. ROOF GUTTER SYSTEM WITH S.S. MESH GUTTER GUARD. | 32. METAL ROOF RIDGE. | 45. BUILDING SIGNAGE. | 59. POWDER COATED PAINTED METAL BASE PLATE FOR SIGNAGE. |
| 7. CONCRETE WALK. | 21. BRASS DOWNSPOUT NOZZLE. | 33. HOLLOW METAL PAINTED DOOR AND FRAME. | 46. THREE COAT EXTERIOR GRADE HEAVY DUTY PAINT. | 60. BUILDING LINE BELOW. |
| 8. CONCRETE BASE. | 22. SERVICE DESK. | 34. ANODIZED ALUMINUM STOREFRONT DOOR/ WINDOW SYSTEM. | 47. PAINTED METAL FASCIA. | 61. ACOUSTIC PANEL FINISH. |
| 9. CONCRETE TRASH ENCLOSURE (TYPE III) AND GATES PER CITY OF CLOVIS STANDARD M-2 AND M-3 | 23. BOOK CASE. | 35. GYP. BOARD CEILING OVER METAL JOIST/ FRAMING. PAINT. | 48. METAL BOOK DROP UNIT. | 62. RADIUS ACUSTIC WALL PANEL AT CORNER. |
| 10. NOT USED. | 24. NOT USED. | 36. SUSPENDED ACOUSTICAL TILE CEILING SYSTEM. | 49. KNOX-BOX PER CITY OF CLOVIS FIRE DEPARTMENT. | 63. SLIDING BARN DOOR SYSTEM. |
| 11. CONCRETE PAVEMENT. | 25. FIBER CEMENT SIDING SYSTEM (SEAMS-VERTICAL) OVER WATER RESISTANT BARRIER OVER SHEATHING OVER METAL STUD WALL. | 37. DIAMOND POLISHED CONCRETE FINISH. | 50. PRE-MANUFACTURED TRUNCATED DOMES. | 64. MONUMENTAL SIGN. SHOWN DASHED FOR CLARITY. |
| 12. ASPHALT CONCRETE DRIVE. | 26. FIBER CEMENT SIDING SYSTEM (SEAMS-HORIZONTAL) OVER WATER RESISTANT BARRIER OVER SHEATHING OVER METAL STUD WALL. | 38. QUERY TILE FLOORING WITH COLORED EPOXY GROUT. | 51. BIKE RACKS. | 65. STEEL ROLL-UP DOOR. |
| 13. OPEN WEB STEEL TRUSS. | | 39. ROOF ACCESS HATCH. | 52. LANDSCAPING WITH DECOMPOSED GRANITE AND RIVER ROCK BED. | |
| 14. STEEL "C" JOIST. | | | 53. BUILDING REFERENCE POINT. | |

Exhibit I - Exterior Elevations

County of Fresno

